

MISSOURI VALLEY SPECIAL COLLECTIONS

TREASURES OF THE MISSOURI VALLEY ROOM

KEYS TO THE CITY

SANBORN FIRE INSURANCE MAPS
OF KANSAS CITY, MISSOURI, 1895-1957

This exhibit was prepared by the Missouri Valley Special Collections and the Department of Public Affairs of the Kansas City Public Library.

The Sanborn map digitization project is supported by the Institute of Museum and Library Services under the provisions of the Library Services and Technology Act as administered by the Missouri State Library. Additional funding provided by the William T. Kemper Foundation.

MISSOURI VALLEY SPECIAL COLLECTIONS

Fires became a hazard of the Industrial Revolution. Uninsured property owners often suffered great financial loss. To protect against such calamity, fire insurance companies sprang up all over the U.S.

Policy writers, however, could not always inspect properties in person. In 1866, D. A. Sanborn, an enterprising surveyor in Massachusetts, began creating specialized maps to help underwriters evaluate the risks.

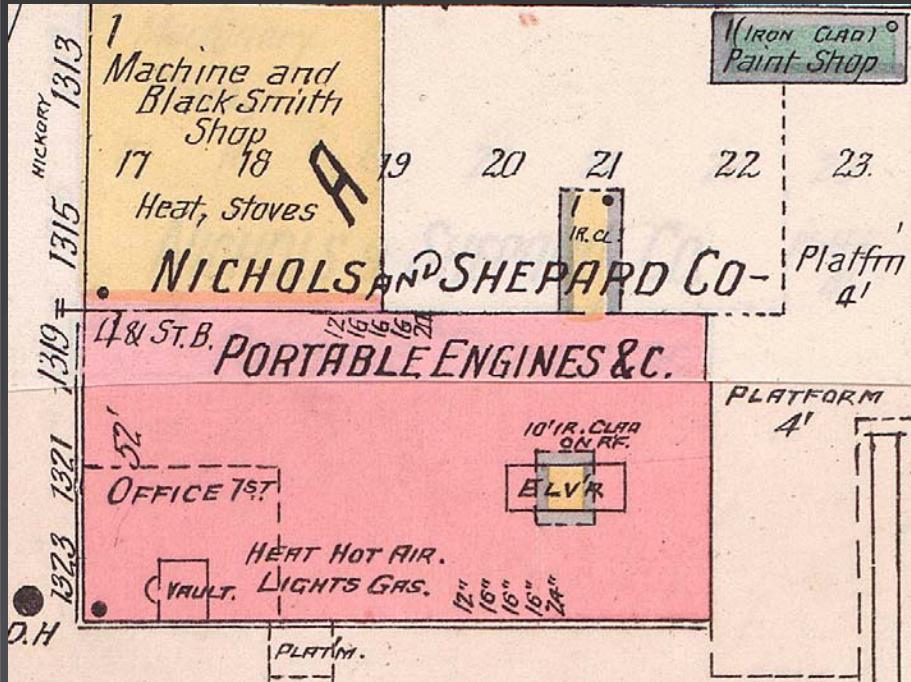
The standardized maps in meticulous, color-coded detail included number of stories, windows and doors, construction material, location of fuel and chemical

storage facilities, hydrants, and sprinkler systems. Over the years, surveyors with the company created maps for more than 12,000 American cities and towns.

Sanborn's company eventually became known simply as the Sanborn Map Company, and today specializes in geographic information systems. The tens of thousands of fire insurance maps published by Sanborn have become a treasured resource for historians, genealogists, and environmentalists researching buildings, neighborhoods, and the individuals that lived and worked in them.

MISSOURI VALLEY SPECIAL COLLECTIONS

Fire destroys Nichols & Shepard Co., dealer of agricultural implements, at 1323 Hickory, August 9, 1893. They lost everything but were fully insured.



Photograph, 8 x 10 in.
John C. Egner Fire Department Scrapbook (SC30-6)
Missouri Valley Special Collections, Kansas City Public Library

Portion of Sanborn Map, Kansas City, Vol. 1, 1895-1907,
Page 24

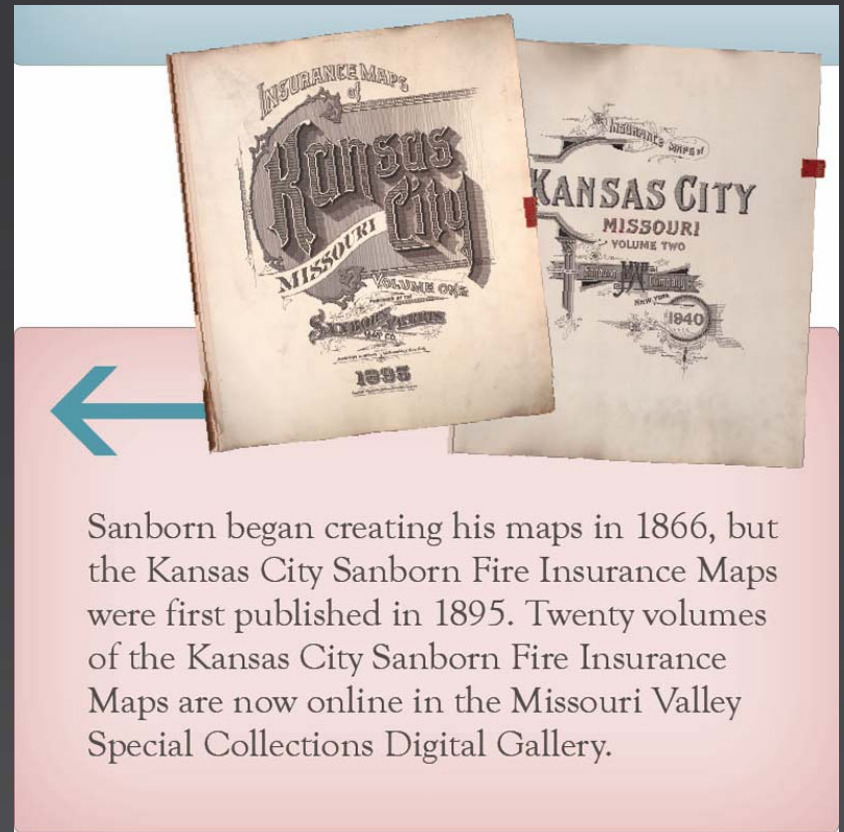
MISSOURI VALLEY SPECIAL COLLECTIONS



SANBORN FIRE INSURANCE MAPS
KANSAS CITY, MISSOURI 1895-1957

IN COLOR, ONLINE in the Missouri Valley Special Collections' Digital Gallery

This project is supported by the Institute of Museum and Library Services under the provisions of the Library Services and Technology Act as administered by the Missouri State Library at a distance office of the University of Missouri, with additional funding provided by the William T. Kemper Foundation.

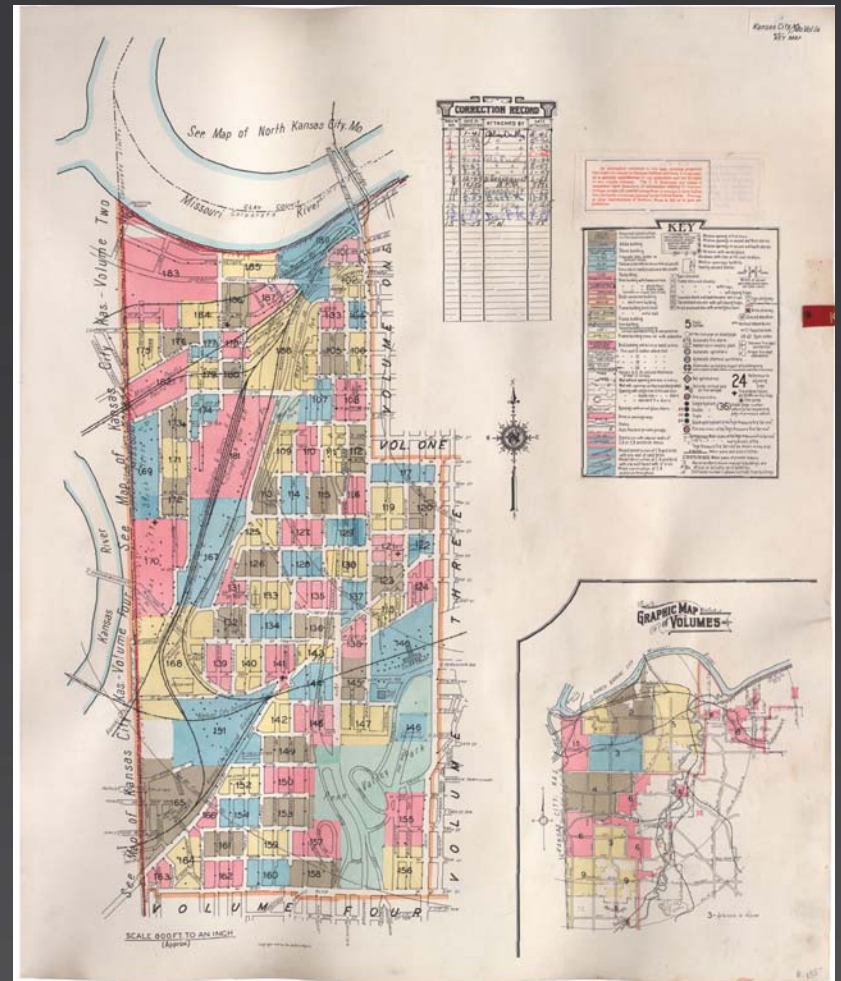


Sanborn began creating his maps in 1866, but the Kansas City Sanborn Fire Insurance Maps were first published in 1895. Twenty volumes of the Kansas City Sanborn Fire Insurance Maps are now online in the Missouri Valley Special Collections Digital Gallery.

MISSOURI VALLEY SPECIAL COLLECTIONS



Cities constantly change. New buildings, additions, or demolitions needed to be noted on the maps. Reprinting was expensive, so correction slips were pasted over the old. Correction dates were entered in a small chart on the Key page in each volume.



Key to Volume 1A - Last Noted Update March 1958
Sanborn Map, Kansas City, Vol. 1A, 1939-1957, Key

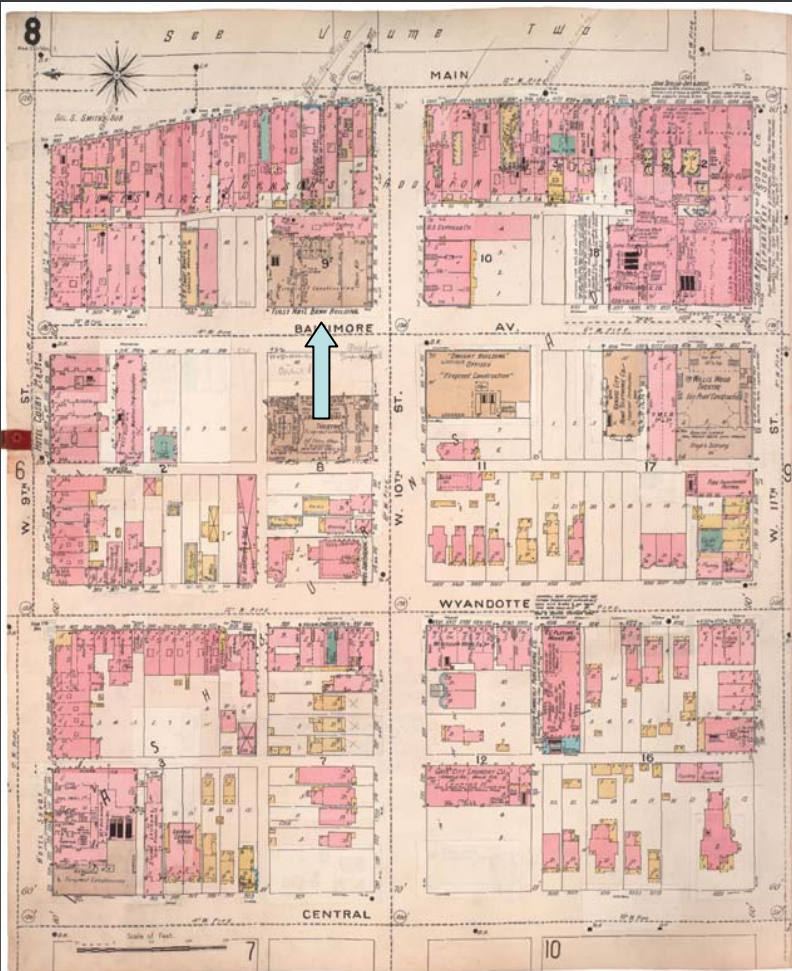
MISSOURI VALLEY SPECIAL COLLECTIONS

SANBORN FIRE INSURANCE MAPS

BUSINESS & INDUSTRY

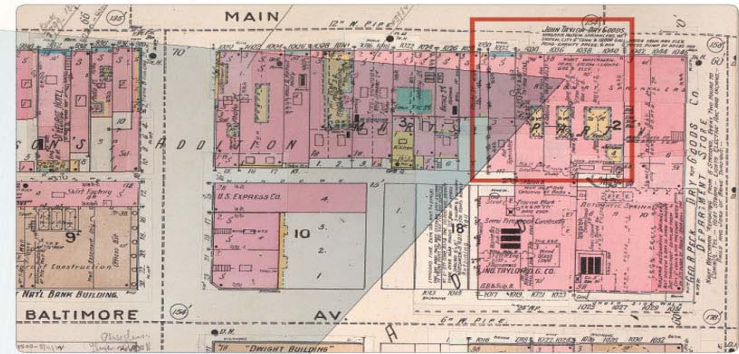
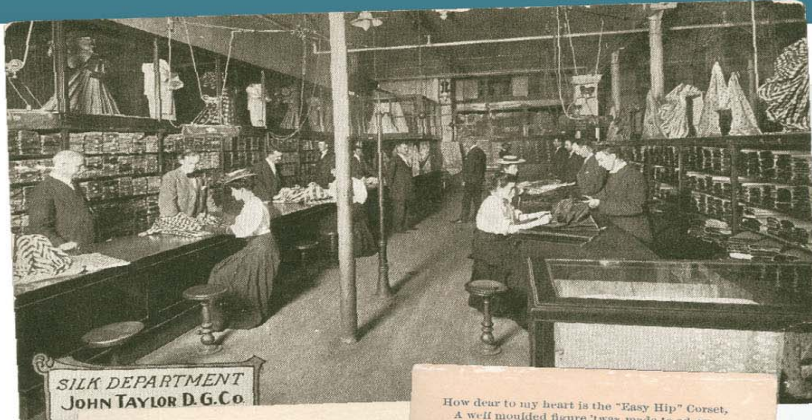
LIBRARY DISTRICT

Page 8 from volume 1 with a base date of 1895 but updated to 1907 shows the former Financial District. Completed in 1906, the First National Bank building has been the central branch of the Kansas City Public Library since 2004.



Former Financial District, Now Library District - Banks, Businesses, Theaters
Sanborn Map, Kansas City, Vol. 1, 1895-1907, Page 8

JOHN TAYLOR DRY GOODS



How dear to my heart is the "Easy Hip" Corset,
 A well moulded figure 'twas made to adorn,
 I'm sure, as an elegantly close fitting corset,
 It lays over all makes I ever have worn,
 Oh, my! with delight it is driving me crazy,
 The feelings that thrill me no language can tell;
 Just look at its shape.—oh, ain't it a daisy!
 The "Easy Hip" corset that fits me so well.
 The close fitting corset—the "Lock Clasp" corset—
 The "Easy Hip" corset that fits me so well.

It clings to my waist so tightly and neatly,
 Its fair rounded shape shows no wrinkle or fold;
 It fits this plump figure of mine so completely
 As if I'd been melted and poured in its mould;
 How fertile the mind that was moved to design it,
 The waist would entice a strong arm to entwine it,—
 The waist of this corset that fits me so well.
 The close fitting corset,—the "Lock Clasp" corset—
 The "Easy Hip" corset that fits me so well.

Of course I will wear it to parties and dances,
 And gentlemen there will my figure admire!
 The ladies will throw me envious glances,
 And that's just the state of affairs I desire;
 For feminine envy and male admiration,
 Proclaim that their object's considered a belle,
 Oh, thou art of beauty—the fair consummation—
 My "Easy Hip" corset that fits me so well.
 The Five-Hook corset—the "Lock Clasp" corset—
 The "Easy Hip" corset that fits me so well.

FOR SALE BY
JOHN TAYLOR,
 1038 & 1040 Main Street,
 KANSAS CITY, - MISSOURI.

JOHN TAYLOR DRY GOODS

- 1034-1040 MAIN ST.
- Opened, 1881
- Purchased by Macy's, 1947
- Building razed, 1997
- Replaced with parking garage

Scotch merchant John Taylor presided over the largest dry goods establishment in the West. Noted for fine yard goods of silk, cotton, wool, and Irish table linen, Taylor's kept a buyer in Ireland year round.

Drawn by splendid horses, ten elegant delivery wagons, dark olive green with the firm name in gold on black background, left the company's private stable on daily rounds. "Whiskers," a black Percheron, was a blue ribbon winner.

John Taylor Dry Goods • Postcard, 3.5 x 5.5 in. • Mrs. Sam Ray Postcard Collection (SC58)
 John Taylor Advertising Card for "Easy-Hip" Corset, circa 1890s • Advertising Card, 3.25 x 6 in. • Advertising Card Collection (SC3)

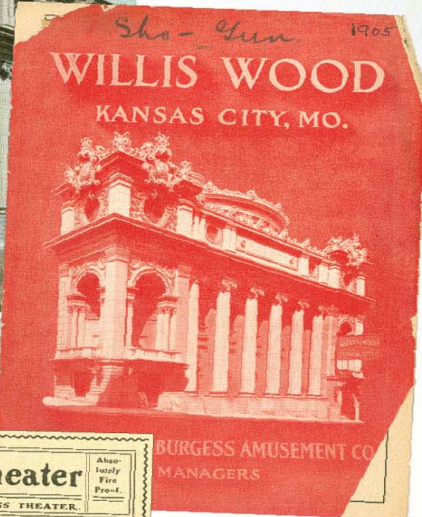
All Images Courtesy: Missouri Valley Special Collections | The Kansas City Public Library • Kansas City, Missouri

WILLIS WOOD THEATRE

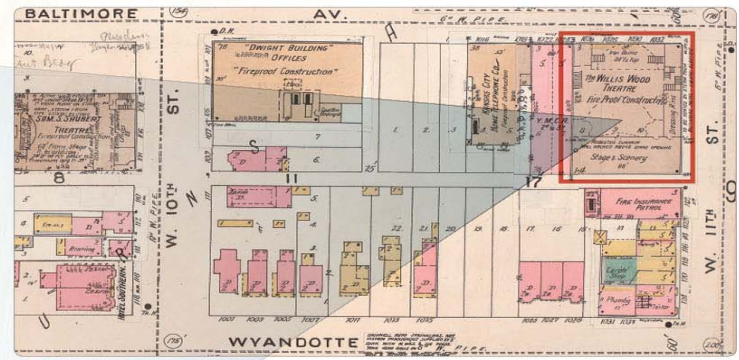


Willis Wood Theatre, Kansas City, Mo.

Dear Norma
Apr. 18, 1904
Jolly
Lyc
A.C.



Willis Wood Theater
 KANSAS CITY'S ONLY FIRST CLASS THEATER.
 Week Commencing Sunday, Sept. 18.
 MATINEES WEDNESDAY AND SATURDAY.
HENRY W. SAVAGE
 OFFERS GEORGE ADE'S QUIANT COMEDY,
The County Chairman



WILLIS WOOD THEATRE

- **NORTHWEST CORNER 11TH ST. AND BALTIMORE AVE.**
- Opened, August 25, 1902
- Destroyed by fire, August 1917
- Replaced by 22-story Kansas City Athletic Club
- Operated for a time as Hotel Continental
- Sold, May 1982
- Renovated as office space and renamed Mark Twain Tower

Architect Louis Curtis designed the theater financed by Colonel Willis Wood, a St. Joseph dry goods merchant. "Opening night will be remembered as one of the most brilliant society events in the history of Kansas City," (Carrie Westlake Whitney, 1908).

Although the theater's program included the reassuring message—**Absolutely Fireproof**—the theater burned to the ground in 1917.

Willis Wood Theatre, August 19, 1906 • Postcard, 3.5 x 5.5 in. • Mrs. Sam Ray Postcard Collection (SC58)
 Willis Wood Theatre, 1905 • Theater Program Cover • Kansas City/Local Area Fine Arts Programs, (SC66)
 Willis Wood Theatre, September 18, 1904 • Portion of Theater Program • Kansas City/Local Area Fine Arts Programs, (SC66)

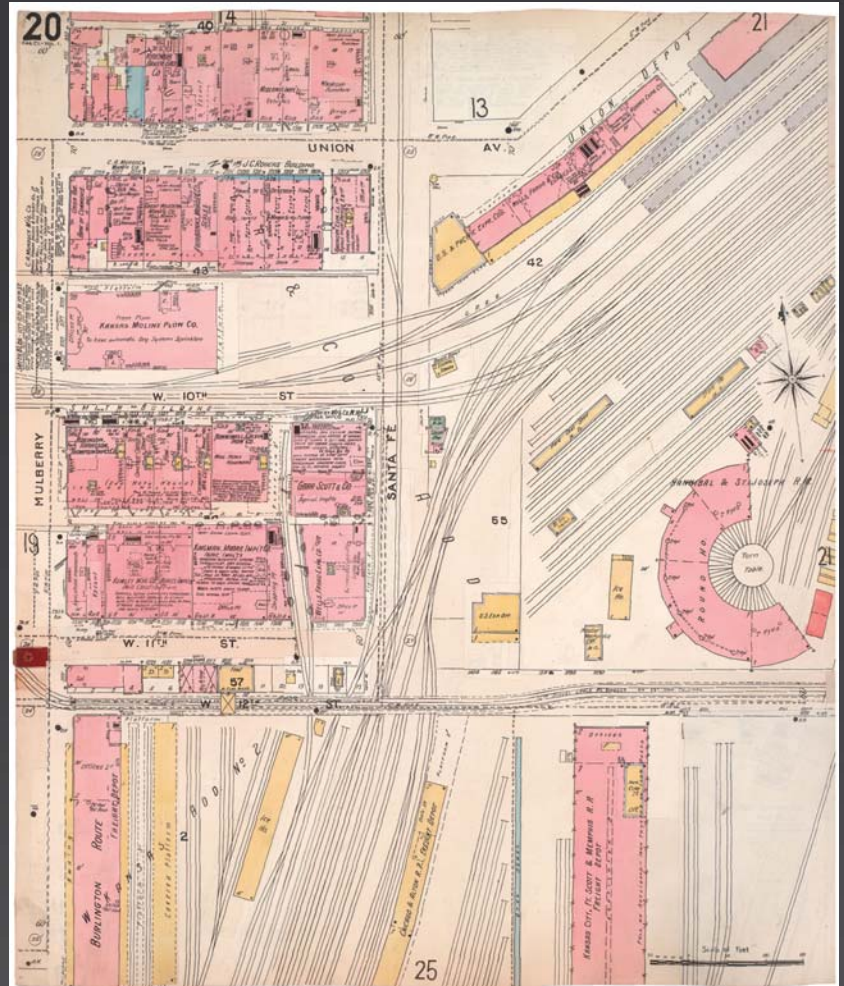
All Images Courtesies: Missouri Valley Special Collections | The Kansas City Public Library • Kansas City, Missouri

MISSOURI VALLEY SPECIAL COLLECTIONS

SANBORN FIRE INSURANCE MAPS

BUSINESS & INDUSTRY

WEST BOTTOMS

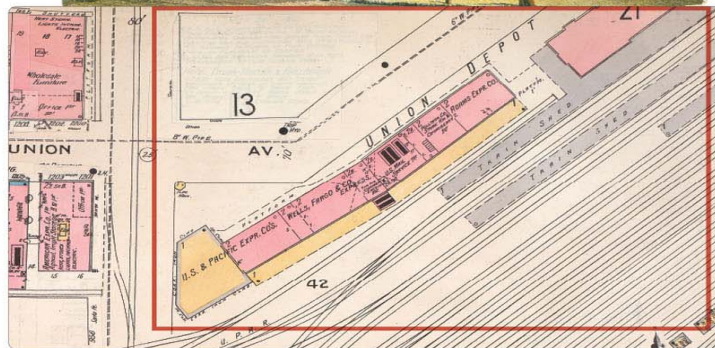
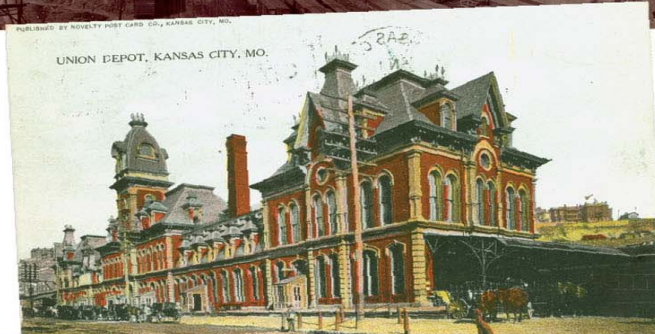


West Bottoms Industrial District - Union Depot, Predecessor to Union Station, Railroad Yards and Roundhouse
Sanborn Map, Kansas City, Vol. 1, 1895-1907, Page 20

UNION DEPOT



Union Depot (left), Railroad Yards, Roundhouse (center), 12th St. Viaduct, and Kansas City, Ft. Scott & Memphis Railroad Freight Depot (right)



West Bottoms, circa 1890 • Panoramic Photograph, 6 x 34 in. • General Photograph Collection (P1)
 Union Depot Train Station, January 12, 1909 • Postcard, 3.5 x 5.5 in. • Mrs. Sam Ray Postcard Collection (SC58)

All Images Courtesy: Missouri Valley Special Collections | The Kansas City Public Library • Kansas City, Missouri

UNION DEPOT

- **UNION AVE. AND 9TH ST. INCLINE**
- Built in 1878 after fire destroyed prior building
- Closed in 1914 when Union Station opened at Pershing and Main streets

Kansas City was second only to Chicago as a railroad hub, and it had the second “union depot” — a train station shared by multiple railroad companies — in the United States.

Around the depot, pool halls, saloons, hotels, barbershops, and brothels sprang up. “Union Avenue society took a swashbuckling pride in a reputation for picturesque sordidness which was believed to compare favorably with the iniquity of New York’s Bowery.... Booted cattlemen, silk-hatted gamblers, ticket scalpers, bunco artists, blanketed Indians, Kansas yokels and scented ladies, strolling from Paris and New York, mingled in this boisterous democracy,” (William M. Reddig, *Tom’s Town*, 1947).

“Big Jim” Pendergast owned one of the more popular saloons where his brother Tom worked as bartender in the late 1890s.

WEST BOTTOMS



Ridenour-Baker Grocery Co. delivery trucks parked on Mulberry St. in front of the Union Avenue Bank of Commerce. Light-colored buildings are Ridenour-Baker Grocery Co.

RIDENOUR-BAKER

- 933 MULBERRY ST.
- Consolidated four Kansas locations to Kansas City, 1878

Located in the West Bottoms, Ridenour-Baker was the first wholesale grocery company to own “extensive switch property adjoining their mammoth warehouses, connecting with all the [railroad] lines running out of Kansas City.” The company also had a fleet of vehicles emblazoned with F.F.O.G., abbreviation for “Finest Fruits of the Garden.”

Quantrill’s band of guerrillas destroyed the first Ridenour-Baker store in Lawrence, Kansas, August 21, 1863. Harlow Baker, shot three times, was left for dead. Six weeks later, he was back on his feet.

Ridenour-Baker Grocery Co. Delivery Trucks, 1915 • Photograph, 8 x 10 in. • General Photograph Collection (P1)
Flying Dutchman, Moline Plow Co., circa 1892 • Advertising Card, 3.25 x 5.75 in. • Advertising Card Collection (SC3)

All Images Courtesy: Missouri Valley Special Collections | The Kansas City Public Library • Kansas City, Missouri

MOLINE PLOW

- 1015 - 1021 MULBERRY ST.

One of numerous outlets for the Moline Plow Co. from Moline, Illinois, the Kansas City branch specialized in the sale of the Flying Dutchman, a “reliable three-wheeled plow, turning a square corner either right or left.”



WE TAKE THE
LIBERTY OF ENLIGHTENING THE WORLD.

1st. In regard to the acknowledged superiority of our full line of walking plows, including ground plows, breakers, side-hill plows, Heaters, road plows, etc., adapted to all conditions of soil.

2d. To our great specialty, the conceded champion of the whole plowed world:

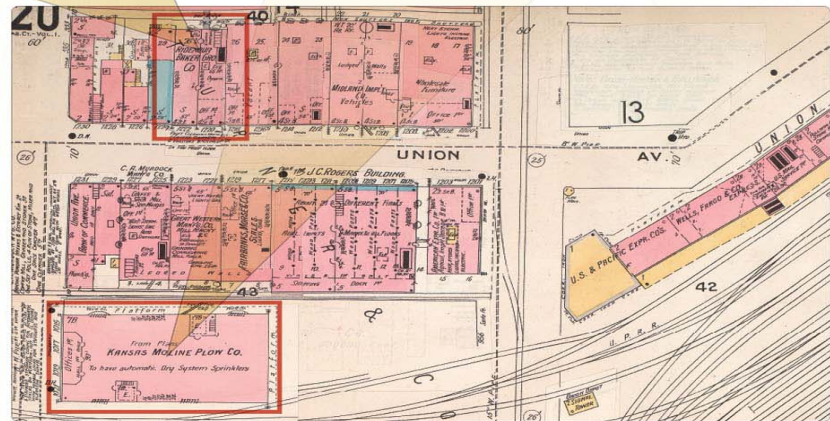
THE FLYING DUTCHMAN.
The original three-wheel Salky Plow that has shown by doing far better work, with much lighter draft, making both man and team. We prove this by the testimony of unprejudiced men sent for the purpose.

Send for the program of our unequalled line of CORN, The New Western, Imperial, and Adjustable Arch Western, for all localities, soils and tastes, secured by the best farming, produced by the best implements, are manufactured by

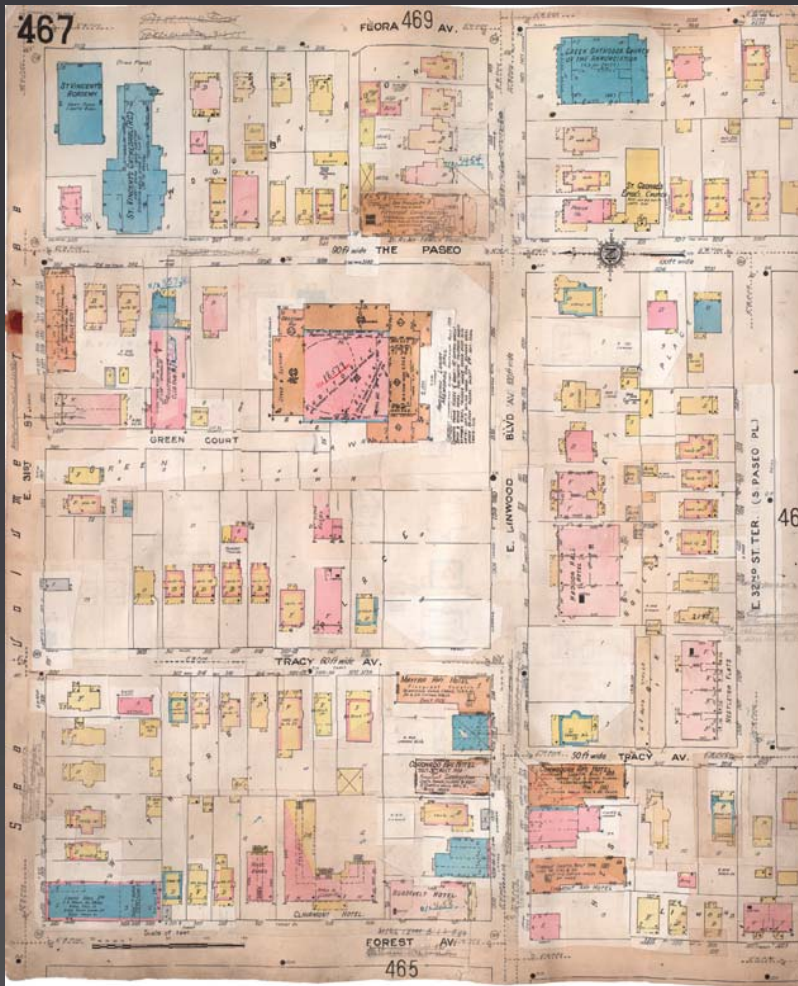
MOLINE PLOW CO., MOLINE, ILL.

HEAD OFFICE: MINNEAPOLIS, MINN.
PEORIA, ILL., and ST. LOUIS, MO.,
OF MINN. and the DISTRICTS.

BY REPRESENTATIVE, ILLINOIS, SUNDAY, 1892.
THE KANSAS CITY BRANCH, THE TRUSTEES OF THE KANSAS CITY PUBLIC LIBRARY, 1015-1021 MULBERRY ST., KANSAS CITY, MO.



MISSOURI VALLEY SPECIAL COLLECTIONS



SANBORN FIRE INSURANCE MAPS

FAMILY & LEISURE

HISTORIC CENTER CITY

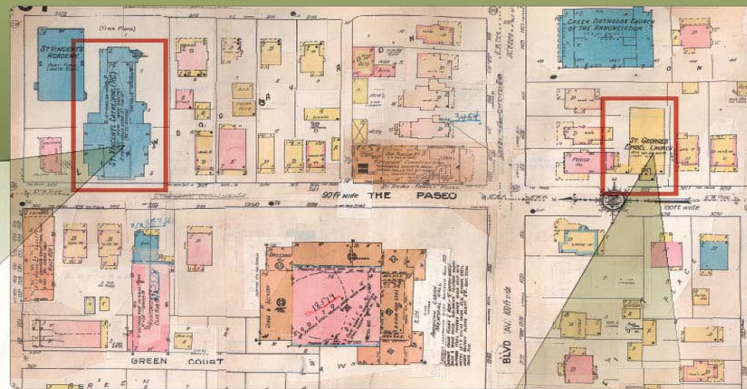
Portion of Historic Center City - Residential Mixed Use District
Sanborn Map, Kansas City, Vol. 4, 1909-1941, Page 467

CHURCHES



ST. VINCENT'S CATHOLIC CHURCH

- **3106 FLORA AVE.**
- First service, May 27, 1888, in storeroom at 206 E. 17th St.
- First location, 1715 Oak St., 1888
- Second location, 3111 Flora Ave., considered "mission" of church on Oak St., dedicated August 11, 1895
- Third location, 3106 Flora Ave, shown in photo, dedicated May 29, 1924
- Sold in 1980 and renamed St. Vincent de Paul Catholic Church



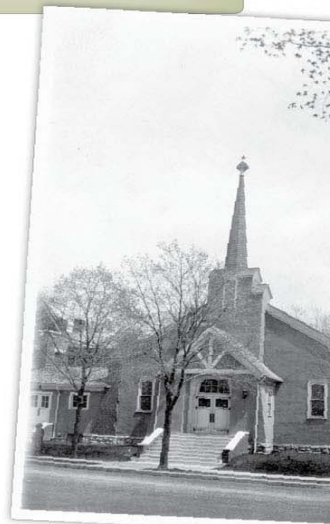
ST. GEORGE'S EPISCOPAL CHURCH

- **3213 THE PASEO**
- First service, March 8, 1891, in building on 33rd St.
- First location, 3209-3213 Troost Ave., 1891
- Second location, 2917 Tracy Ave., 1909
- Third location, 3213 The Paseo, southeast corner, Linwood Blvd. and The Paseo, 1925
- Merged with St. Mary's Episcopal Church, 1986

In 1975 the St. Vincent parish of the Diocese of Kansas City-St. Joseph merged with Holy Name and Annunciation to form Church of the Risen Christ parish. Using intermediaries, the Society of St. Pius X, traditional Catholics who use the centuries-old Latin Tridentine liturgy, secretly purchased the buildings in 1980. "Diocesan officials later said the Gothic structure would not have been sold if they had known who the buyer was," (Robert J. Pessek, 1980). Traditionalists still worship in the church.

"About 5 o'clock in the morning of New Year's Day, 1954, a group of late revelers, passing St. George's on their way home, saw a man running from the church. Fire was spurting inside the windows at the rear of the building. One of the merry-makers ran to the St. Regis Hotel across the street and called the Fire Department," (Calvin Manon, 1966).

After the fire leveled the church, members relocated to 58th St. and Highland Ave.



St. Vincent Catholic Church, circa 1930s • Photograph, 8 x 10 in. • Centenary History of the Churches (SC29)

St. George's Episcopal Church, circa 1926 • Postcard, 3.5 x 5.5 in. • Centenary History of the Churches (SC29)

All Images Courtesy: Missouri Valley Special Collections | The Kansas City Public Library • Kansas City, Missouri

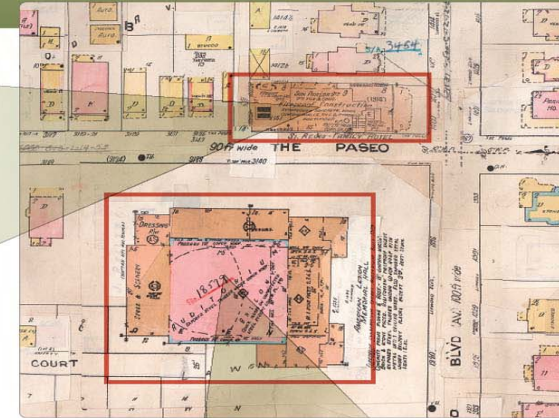
THE PASEO & LINWOOD



ST. REGIS HOTEL

- **1400 E. LINWOOD BLVD.**
- Built in 1914 by Howard Vrooman
- Designed by Owens & Payson, Architects
- Placed on Kansas City Historic Register, 1984

This elite and fashionable family hotel housed not only travelers but permanent residents like Theodore Gary, president of the Kansas City Home Telephone Company. Built on a naturally high ridge running through the city, the hotel ballroom on the top floor at the time of construction was considered the highest place in the city. In the 1970s the hotel became the St. Regis Apartments.



SCOTTISH RITE TEMPLE

- **1330 LINWOOD BLVD.**
- Built, 1929
- Forced to leave building, 1939
- Occupied later by American Legion
- Scottish Rite returned, 1971



The land across the street from the St. Regis Family Hotel remained vacant for 15 years until the imposing Scottish Rite Temple was constructed. Unfortunately, financial difficulties caused by the Great Depression forced the Masonic body to leave in 1939. Subsequent occupants included the American Legion as well as a post office branch and a printing company. Since 1971, 1330 Linwood Blvd. is again the Scottish Rite Temple.

St. Regis Hotel, circa 1920s • Photograph, 8 x 10 in. • General Photograph Collection (P1)
 St. Regis Hotel at Intersection of Linwood and The Paseo, Feb. 20, 1916 • Photograph, 8 x 10 in. • General Photograph Collection (P1)
 Scottish Rite Temple (right), 1930 • Photograph, 8 x 10 in. • General Photograph Collection (P1)

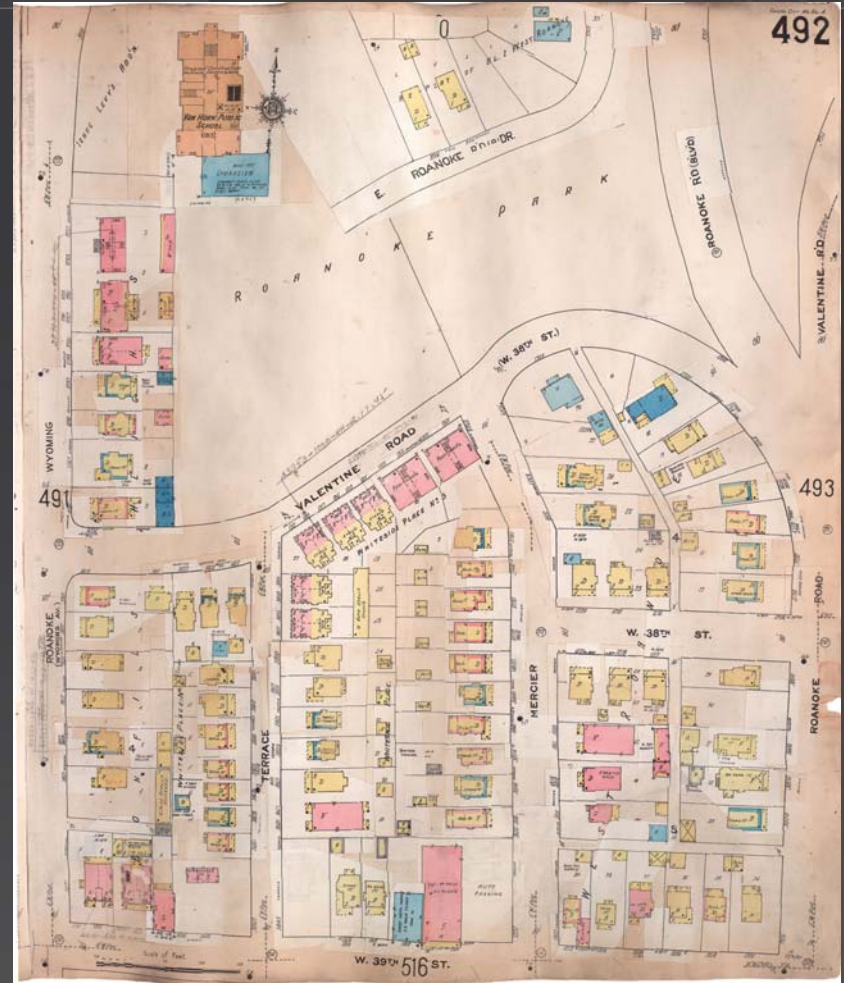
All Images Courtesy: Missouri Valley Special Collections | The Kansas City Public Library • Kansas City, Missouri

MISSOURI VALLEY SPECIAL COLLECTIONS

SANBORN FIRE INSURANCE MAPS

FAMILY & LEISURE

VOLKER NEIGHBORHOOD

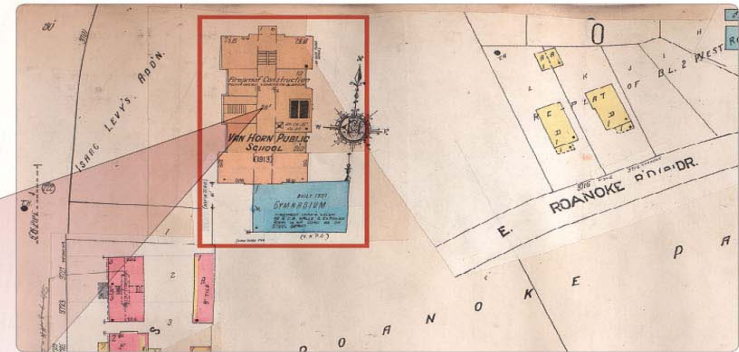


Residential - Volker Neighborhood, Roanoke Park, Van Horn School
Sanborn Map, Kansas City, Vol. 4, 1909-1941, Page 492

VAN HORN SCHOOL

VAN HORN SCHOOL

- **3715 WYOMING ST.**
- Original school northwest corner of 40th and Wyoming streets
- Constructed new building at 3715 Wyoming St., 1912
- Added gymnasium, 1937
- Named changed to William Volker, 1948
- Renamed Gordon Parks at Volker, 2000



When the school moved to new quarters at 3715 Wyoming St. overlooking Roanoke Park, the original four-room schoolhouse became part of the Roanoke Baptist Church. In 1955 the Van Horn name transferred to the high school built on the former Van Horn homestead at Winner and Van Horn Roads, the intercity area between Kansas City and Independence.

At the mid-winter Play Festival, kindergarteners gave a “delightful representation of Christmas games and winter sports as played in the kindergarten . . . and, finally, closed the festival occasion with rhythmic games, when 1,000 children in two alternate groups covered the entire floor of Convention Hall, doing at one time, freely and happily, the dances which all played ‘at home’,” (Cora L. English, 1913).

Van Horn Kindergarten Class practice for mid-winter Play Festival, circa 1913 • Photograph, 8 x 10 in. • Kansas City, Missouri School District Records (SC23)

Van Horn School Students, circa 1913 • Photograph, 8 x 10 in. • Kansas City, Missouri School District Records (SC23)

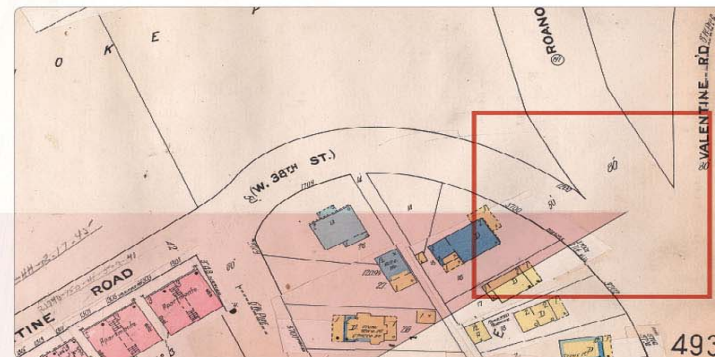
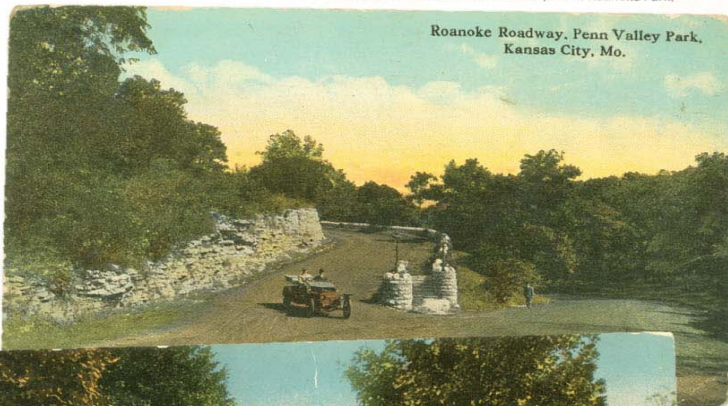
All Images Courtesy: Missouri Valley Special Collections | The Kansas City Public Library • Kansas City, Missouri

ROANOKE PARK

ROANOKE PARK

- 36.25 acres
- Established between 1901 and 1923

Postcard publisher erred adding Penn Valley Park to caption. It was near but never part of Roanoke Park.



Steep wooded hillsides, rugged ravines, limestone outcroppings, and an irregularly shaped valley with playing fields, picnic area, and tennis courts entice Kansas Citians to enjoy Roanoke Park.

One-mile-long Valentine Road forms the southern border of the park and northern border of a residential district of attractive homes made from native stone. Bisecting the park, the red brick Roanoke Road was designated an historic landmark in 1971 by the Parks Board.

Local legend claims Jesse James hid in a cave at the park where later, between 1940 and 1950, some children became lost. Subsequently, the cave was sealed to prevent further tragedies.

Roanoke Roadway in Roanoke Park, 1911 • Postcard, 3.5 x 5.5 in. • Mrs. Sam Ray Postcard Collection (SC58)
Valentine Road, 1910 • Postcard, 3.5 x 5.5 in. • Mrs. Sam Ray Postcard Collection (SC58)

All Images Courtesy: Missouri Valley Special Collections | The Kansas City Public Library • Kansas City, Missouri

MISSOURI VALLEY SPECIAL COLLECTIONS

Sanborn Maps and Other Missouri Valley Room Resources Bring Kansas City History to Life

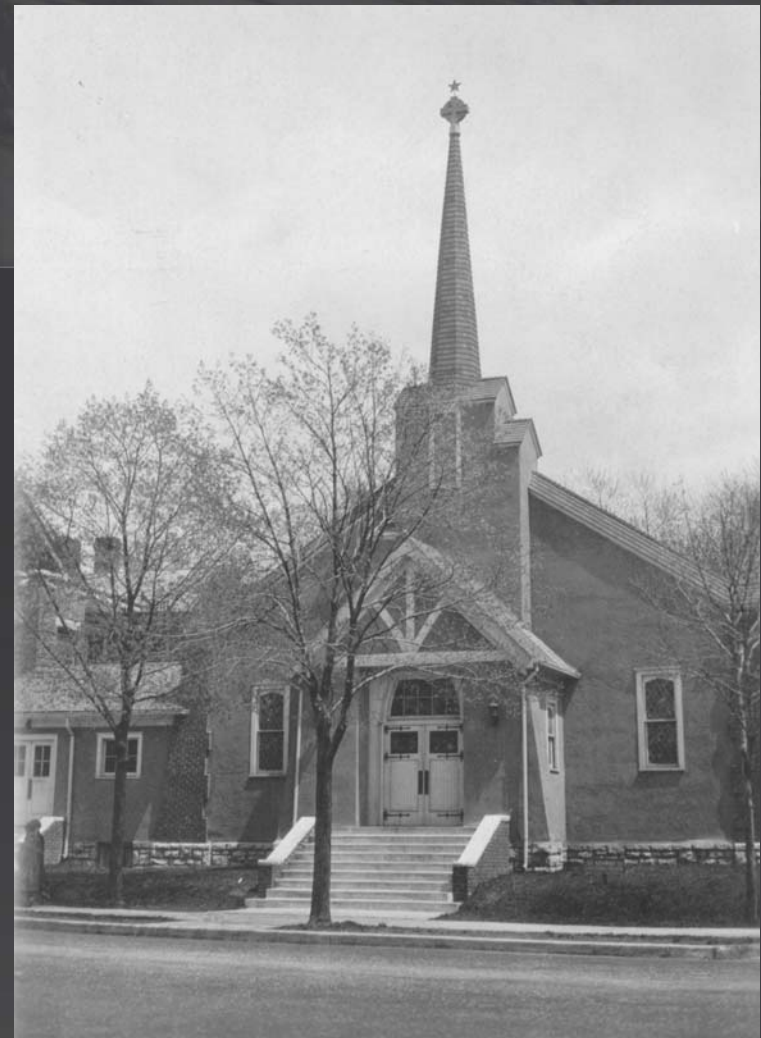
A variety of resources from the Missouri Valley Special Collections have been utilized to create this exhibit. The postcards, photographs, advertising trade cards, and other items offer add insight about life in Kansas City in earlier times.



MISSOURI VALLEY SPECIAL COLLECTIONS

Material in the Missouri Valley Room can help you:

- Research the history of a building and surrounding area
- Learn little known facts regarding a residence, school, church, park, business, and more
- Trace neighborhood change and development



MISSOURI VALLEY SPECIAL COLLECTIONS

- Provide clues for renovating a building
- Discover former owners of residences and details about their lives
- Make your ancestors come alive by tracing the route they would walk to school, a business, or church



MISSOURI VALLEY SPECIAL COLLECTIONS

Ask a librarian in the Missouri
Valley Room for help!



MISSOURI VALLEY
SPECIAL COLLECTIONS

Kansas City Public Library

www.kclibrary.org

Missouri Valley Special Collections

Home Page

www.kchistory.org