



*The* GLEAM  
1951



Bob

Marty

The

Chas

Nash

Bill

Bill

Bill

Bob

Howard



1ST OF FEB  
2PM

Well bathing suit I guess you'll  
be glad to get rid of me. I'm  
sorry it didn't have the pleasure of  
knowing you better. Although it won't  
forget the bathing suit.

Love Wayne Custer

I should Take Time To Read This!  
But Wayne said I shouldn't so I  
won't. Oh Well - Best Wishes  
To a Classmate of 49-01

Neal Scribner

Dear Celia,

It has been such  
a pleasure knowing  
you this year. I only  
wish I had known  
you sooner. You have  
certainly done wonders  
for Christmas and  
I know you will do  
even bigger and  
better things next  
year. Best wishes  
to a swell friend

Sincerely

Sharon

Diamond

Dear Celia,

Gee, I'm seldom  
around you or with  
you but I really  
privilege myself  
by thinking of you  
as one of my best  
friends. Both you  
& Helen.

You're sweet,  
nice, unfeigned -  
just perfect. I'll  
see you a lot  
this summer I  
hope!!

Love,  
Ziggy

*Belia Gray*



*Dear Cecil,  
Doug  
Hagan*

*Best Wishes  
Julia Gordon*

*Richard  
D. ...*

"Not of the sunlight,  
Not of the moonlight,  
Not of the starlight,  
O, young mariner,  
Down to the haven,  
Call your companions,  
Launch your vessel  
And crowd your canvas,  
And, ere it vanishes  
O'er the margin,  
After it, follow it,  
Follow the Gleam."

-- Tennyson.

*Handwritten notes and signatures at the bottom of the page, including the name 'Richard D. ...' and other illegible scribbles.*



Glea



*Celia  
Thanks you for  
a fine year work  
Miss J. J. Johnson*

## STAFF

Editor-in-Chief . . . . . Virginia Russell  
Assistant Editor . . . . . Mary Lee Blackburn  
Art Editors . . . . . Shirley Kofford  
Regina Lux  
Layout Editor . . . . . Margaret McKevit  
Business Manager . . . . . Barbara Van Dyke  
Advisor . . . . . Miss Sarah Ellen Campbell

William Chrisman High School  
Independence, Missouri

*Thanks for you  
same as Helene  
but I'll take you  
along too Guyary sign*

*m* 1951





# Hi!

Dear Alicia: Ruthie.

now, but I'll let our friendship speak for itself. You are one of the finest girls I've ever known... and I admire you for your integrity and character. I sincerely hope that you continue with your successes in speech and in music in all the years to come. God bless you - & you deserve everything life has to offer you.

Love  
Ruthie E. Law

I'm Willy, the Spirit of Chrisman. Have you ever wondered about the enthusiasm at the games . . . pep in assemblies, and the sparkle in school life? Well, that's me! So, who better can show you the highlights and shadows of the past school year. As you go through the pages of the GLEAM, you will re-live fond memories and renew old acquaintances.

Since 1916, I have grown from a tiny spark to the flaming torch that I am today. Through the years my ardent zeal has inspired every Chrisman student. Without me school would be no more than four walls, a floor, and a ceiling.

My spirit and enthusiasm will keep William Chrisman alive always. These have incited former Chrismanites to victory in curricular and extracurricular fields. These are inspiring present Chrismanites to outstanding achievements. These will quicken future Chrismanites to worthy quests.

Alicia -  
Wah, nut ya.  
is the big m. etc  
needer here well  
knowing you are here  
you go to Lady. that's  
they wonderful!  
John Williams

# Table of Contents

## SCHOOL PERSONNEL

Board of Education . . . . .	10
Parent-Teacher Association . . . . .	11
Administrators and Secretaries . . . . .	12-13
Faculty . . . . .	14-16
Custodians and Bus Drivers . . . . .	17



## STUDENT BODY

Seniors . . . . .	20-37
Juniors . . . . .	38-41
Sophomores . . . . .	42-47

## SCHOOL LIFE

School Calendar . . . . .	50
Deadline Honors . . . . .	51
Highlights . . . . .	52-53
Senior Play . . . . .	54
ROTC Royalty . . . . .	55
Classroom Scenes . . . . .	56-57
One-Act Plays . . . . .	58-59
ROTC . . . . .	60-63
Physical Education . . . . .	64
Student Council . . . . .	65
Music . . . . .	66-69
Publications . . . . .	70-72
Junior Play . . . . .	73
Speech Play . . . . .	74
Debate . . . . .	75



## SPORTS

Football . . . . .	76-84
Basketball . . . . .	85-89
Track . . . . .	90-91

## CLUBS AND SOCIETIES

## AUTOGRAPHS

## ADVERTISEMENTS

## FAREWELL



## DEDICATION



SARAH ELLEN CAMPBELL

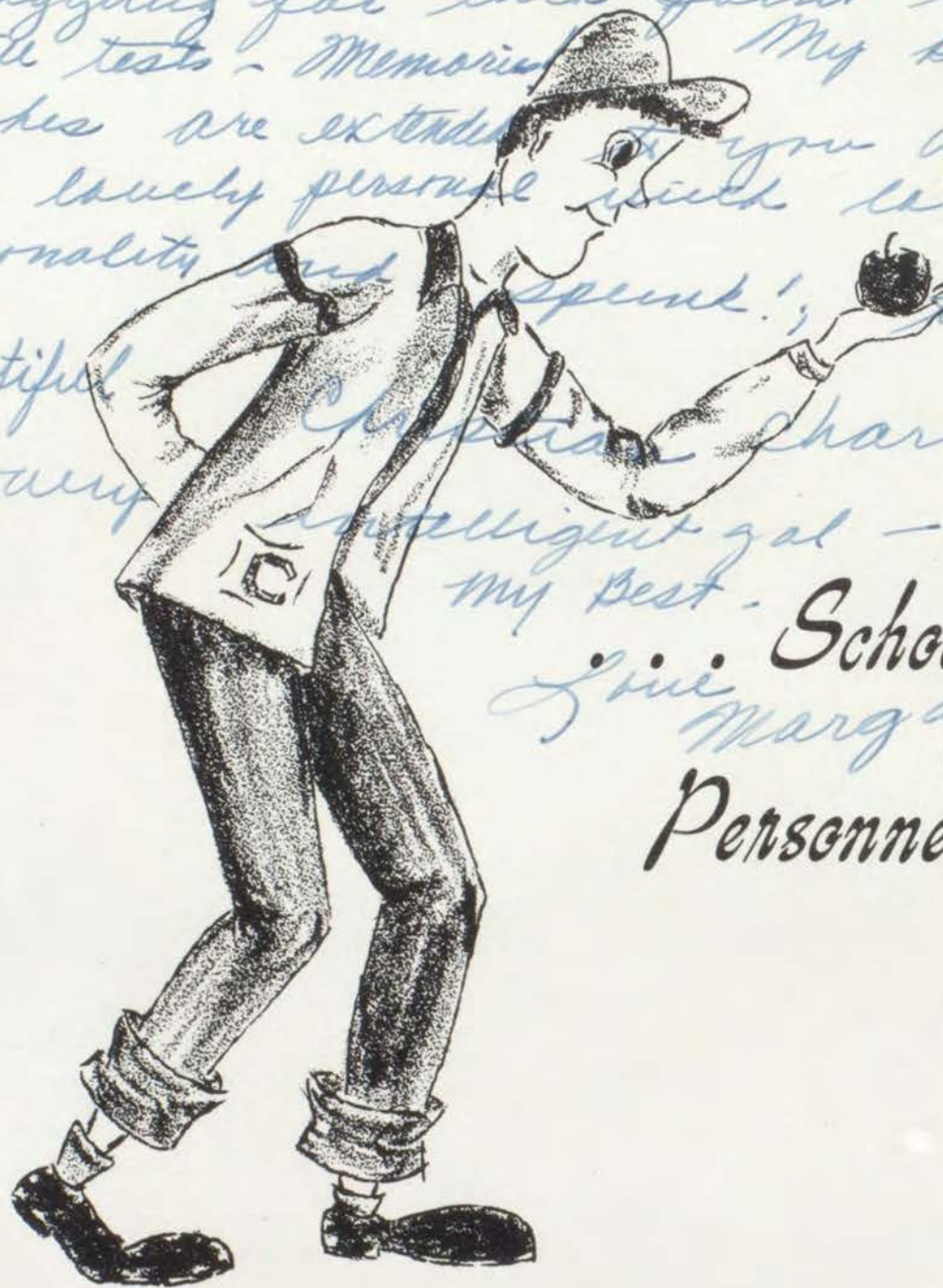
To Miss Sarah Ellen Campbell, our patient and guiding advisor, we dedicate the 1950 Gleam. Without her help and assistance, the task of creating and assembling a yearbook would have been impossible.

A Bachelor of Science in Education degree from Central Missouri State College and a Master of Education degree from the University of Kansas have made her a capable and invaluable director. She has devoted many hours of her own time to hard work for the success of the Gleam.

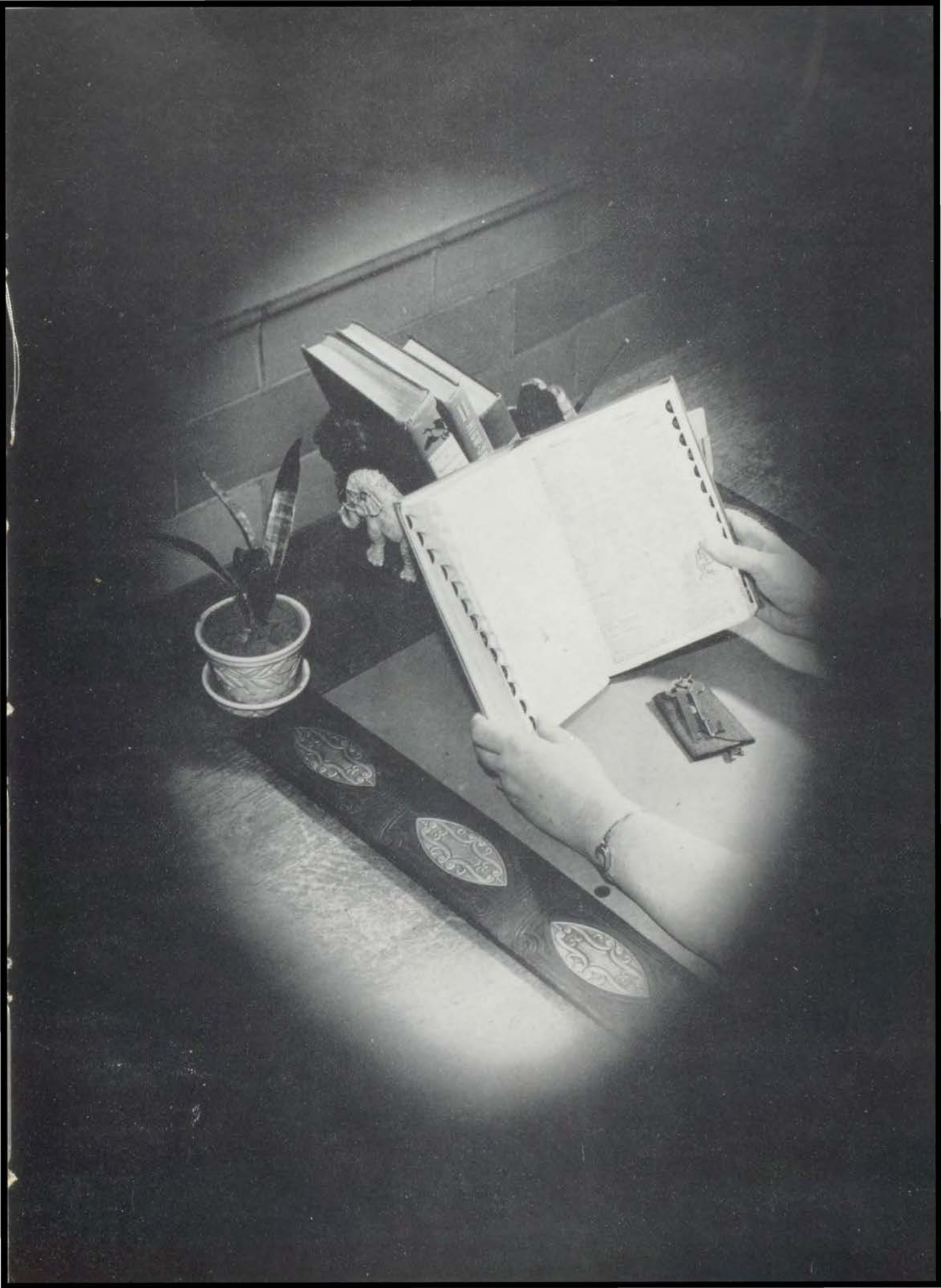
She has gone beyond her duty as teacher of journalism and has done much to perpetuate the spirit of William Chrisman.

For this, we express our heartfelt thanks and appreciation to a wonderful person. There was never anyone who deserved it more.

Thanks for all the nice things you've  
done for me. I have truly enjoyed  
knowing you! It has been fun  
to have been together in gym -  
struggling for each point on the  
skill tests - Memorial. My Best  
Wishes are extended to you always.  
So a lovely person with lots of  
personality and spirit! So a  
beautiful character  
a very intelligent gal - give  
my best.



School  
Linn Margaret  
(Moore)  
Personnel



# They Chart Willy's Course



DR. FLOYD A. YALE  
President

Dr. Floyd A. Yale is the civic-minded president of the Board. His tenure in this office has been characterized by informed and conscientious leadership in all of the planning for betterment of the city's schools.

To the Board of Education of Independence, Willy Chrisman has given the task of formulating the administrative policies of the Independence schools. Six public spirited men and women, together with their secretary, Miss Katie Chastain, compose the Board.

For many years past, the Board of Education has been a continuous body, not only because of the manner of the election of the members but also because of the number of years of service the members have given. A history of the Board reveals that the tenure of the members is a long one. This is indisputable testimony to the quality of service which they have given the electorate year after year.

Without the wisdom of an enlightened and sincere board, no school system can long hope to function well. To these men and women go our congratulations and gratitude that, in planning for the schools of the city, they have so faithfully carried on the Chrisman tradition of good service.



MISS KATIE CHASTAIN  
Secretary-Treasurer



STANDING: L. G. Keith, Superintendent; Marvin Carl, Vice-President; Eugene Theiss, member; Kenneth B. Smith, member. SEATED: Mrs. Adron Randall, member; Mrs. L. F. P. Curry, member; Floyd A. Yale, President; Miss Katie Chastain, Secretary-Treasurer.

## They Promote Willy's Welfare



BACK ROW: Mrs. Sousley, Mrs. Cordes, Mrs. Bashor, Mrs. Rich, Mrs. Lowell, Miss Waitman, Mrs. Smith, Mrs. Byrne, Mrs. Collins, Mrs. O'Neal, Mrs. Ebeling, Mrs. Etzenhouser, Mrs. Siegfried, Mrs. Williams. SECOND ROW: Mrs. Bridges, Mrs. Dexter, Mr. Snider, Mrs. Phillips, Mrs. Pickett, Mrs. Blackburn, Mrs. Foster. FRONT ROW: Mr. Lefever, Mrs. Casebolt, Mr. Stinson, Mrs. Horn, Mrs. Prichard, Mrs. Vardeman, Miss Campbell.

A special affinity exists between Willy, the genial spirit of William Chrisman, and the parents of the students who attend here. Perhaps the reason is that the parents were the first teachers of these pupils, and are intimately conscious of their needs. The two share a mutual wish for the well-being of these boys and girls. Willy has an approving smile for the officers and members of the Parent-Teacher Association as they try to carry out the ideals of the organization.

Willy is the silent partner of the group in its efforts to provide better opportunities for Independence youth. He endorses fully the goals of the association which are especially to promote the welfare of youth in home, school, church, and community life; to secure adequate laws for the care and protection of children and youth; to raise the standard of home life; to bring the home and the school into closer relationship; and to develop between educators and the general public such unity that will secure the highest advantages in the education of the boys and girls.

In the accomplishment of these goals, the efforts of the Parent-Teacher organization are in complete alignment with all of the best traditions of school life. The members compose a corps of persistent and devoted workers who have the best interests of Chrisman students at heart. We now express to them our gratitude and appreciation.



LOWELL G. KEITH  
Superintendent

The spirit of William Chrisman finds expression in many ways: through the activities of its students, the purposes of its curriculum, the character of its personnel. This spirit of the school, of which Willy Chrisman is the personification, has delegated to the administrators certain tasks and prescribed certain qualities which will fit them for performing these tasks.

Willy Chrisman wishes that instruction in all branches of the Independence school system should be co-ordinated and that the technicalities involved in superintending the work of all grades should be handled efficiently. For doing this, leadership and executive skill are two necessary qualities. When Willy Chrisman sought just the right man for the task, he found him in the person of Mr. L. G. Keith, Superintendent of the schools of Independence. Mr. Keith sees the grade schools, the junior and the senior high schools in proper perspective and helps to provide for each one, its individual needs. He provides for the schools, informed leadership and able performance of the duties of his office.

It is certain that the spirit of the school is well expressed by him and by all those whose specific tasks are well done. The students of William Chrisman are glad that the benign and approving eye of Willy rests on the work of the Superintendent, and they feel that Mr. Keith will continue to carry on in the best traditions of the school.

## Willy's life runs smoothly

From the halls of William Chrisman have departed each spring for over half a century, high school graduates who find their place in the life of the nation. During their stay within the school, they acquired certain skills that would help equip them for adult living. In the course of time the ideals of scholastic attainment, worthy citizenship, and participation in school activities which these graduates sought to acquire have become a tradition of the school.

To perpetuate these ideals, Willy Chrisman, who is the embodiment of the spirit of the school, has found an able helper in the Principal of William Chrisman, Mr. Jesse H. Stinson. His is the task of gearing smoothly the machinery of curricular and extracurricular activity. He shares with Willy the hope that Chrisman students may find ample opportunities to develop their talents as fully as may be possible. Providing facilities for doing this necessitates an understanding of what these talents are, how they can be developed, and what use can be made of them in the world outside the school room.

Chrisman students congratulate Willy on his choice of Mr. Stinson as the Principal of William Chrisman, knowing that the tradition of good workmanship will be perpetuated.





For some time now the size of William Chrisman has exceeded the original estimate of its capacity. With the increase in enrollment came also an increase in the administrative duties necessary to good school management. A part of these duties has been assigned to the office of vice-principal, a position held since its creation by Mr. Gregory Lefever. Mr. Lefever is well fitted for this post by virtue of his training and experience, and because of his long association with Willy Chrisman, the guiding spirit of the school. Through Willy, has come an acquaintance with the needs of the school community, the wishes of the patrons, and the hopes of the students who fill the classrooms.

The specific task of the Vice-Principal is keeping the attendance records, a task involving the collecting and classifying of the data, and the compilation of periodic reports. Mr. Lefever's duties are, however, instructional as well as administrative and clerical. He teaches classes in advanced mathematics. This fortunate circumstance gives him close contact with the students and provides a double vantage point from which to view the entire student body. The manner in which Mr. Lefever has performed his duties has always been in harmony with the traditional efficient service of the school.



GREGORY LEFEVER  
Vice-Principal

## because of Administrative Plans

Few are the educational institutions and business establishments today which can operate smoothly without their secretaries, and fortunate is that concern which has the assistance of capable ones. The qualifications for business and educational work are happily combined in the persons of the four secretaries in the Independence schools.

Mrs. Mabel Alley and Miss Susan Parobok are secretaries in the office of the vice-principal and the principal respectively. Mrs. Alley's duties are, chiefly, the actual recording of the daily attendance. Miss Parobok's work is both stenographic and clerical. She is in charge of most of the school correspondence and of permanent student records.

Miss Martha Hutchens and Miss Ann Price are employed in the office of the superintendent and Miss Hutchens is officially designated as clerk. Her chief duty is keeping the enumeration data, but her day's work includes countless routine tasks besides this. Miss Price handles school correspondence, makes reports, and acts as receptionist.



ANN PRICE,  
Sec'y to Supt.



SUSAN PAROBOK,  
Sec'y to Prin.



MABEL ALLEY  
Sec'y to Vice-Principal



MARTHA HUTCHENS  
Clerk, Supt's Office

# The Faculty Aids Willy's



DOROTHY BALES  
English, Guidance

W. A. BERG  
Guidance Director

ELIZABETH BERRY  
Social Science



FLORENCE BRUSH  
Spanish

SARAH ELLEN CAMPBELL  
English, Publications

LUCILLE CARROLL  
Biology



ELLIS CLEMENT  
Physics, Algebra, Advanced  
Physical Science

KENNETH R. CLINE  
Mechanical Drawing

M/SGT. WILLIAM H. DICKSON  
R.O.T.C.



GLADYS EVANS  
Biology

SGT. DAVID E. GARNER, JR.  
R.O.T.C.

LEWIS HARTZOG  
Track Coach



T. V. HOPKINS  
Physical Education

MARIE HORD  
Commerce

HAZEL JOHNSON  
Vocational Home Economics

# Development Through Curricular



M. ORVILLE JOHNSON  
Band, Orchestra, Chorus

MARY KENNEDY  
Social Science

MARY LEARNARD  
Social Science

GREGORY LEFEVER  
Algebra

ETHMEL LYON  
Algebra

LOUISE MacDONALD  
English, Literature

MARGARET MEREDITH  
Speech

THELMA MYERS  
Commerce

JESSIE PAGE  
Commerce

RAY PEARCE  
Coordinator

MAYME PIPER  
Library

GROVER C. REDFORD, JR.  
Physical Education,  
Driver Education

ROBERTA RICE  
Health, Physical Education

VERDA RILLER  
English

NELL SAMPSON  
Art

# And Extra-curricular Activities



ASENATH SCHROEDER  
Social Science

BERNETA SHERMAN  
Social Science

ELLEN SINGLETON  
Latin, English



JESSIE SMITH  
Chorus

A. B. SPEARS  
English

BETTY ANN STREET  
Physical Education



NELVADA SURBAUGH  
Vocational Home  
Economics

MAJOR JAMES L. SWOFFORD  
A.U.S.  
R.O.T.C.

RALPH G. TUCKFIELD  
Chemistry



ETHEL WAITMAN  
Mathematics

ERWIN W. WALKER  
Commerce

WALTER E. WEBB  
Manual Training



WILLIAM L. WEBER  
English

ROBERT F. WICKE  
Social Science

MARY FOSTER WILLIAMS  
Dramatics

*Best in school  
my class for a wonderful  
vacation. See you  
next year. Sincerely,  
Betty A Street*

## Custodians

Familiar as the sight of our text-books and fully as necessary are the custodians at William Chrisman. As punctual as the clock that divides our day into its allotted periods are these men in the performance of the day's routine. They work continually to keep our building clean and comfortable. They take the time to help us find lost articles, to help us open stubborn lockers, and to assist us in countless other ways.

The custodians are an important part of Willy Chrisman's staff, and we take this opportunity to express our appreciation for their willing and efficient service.



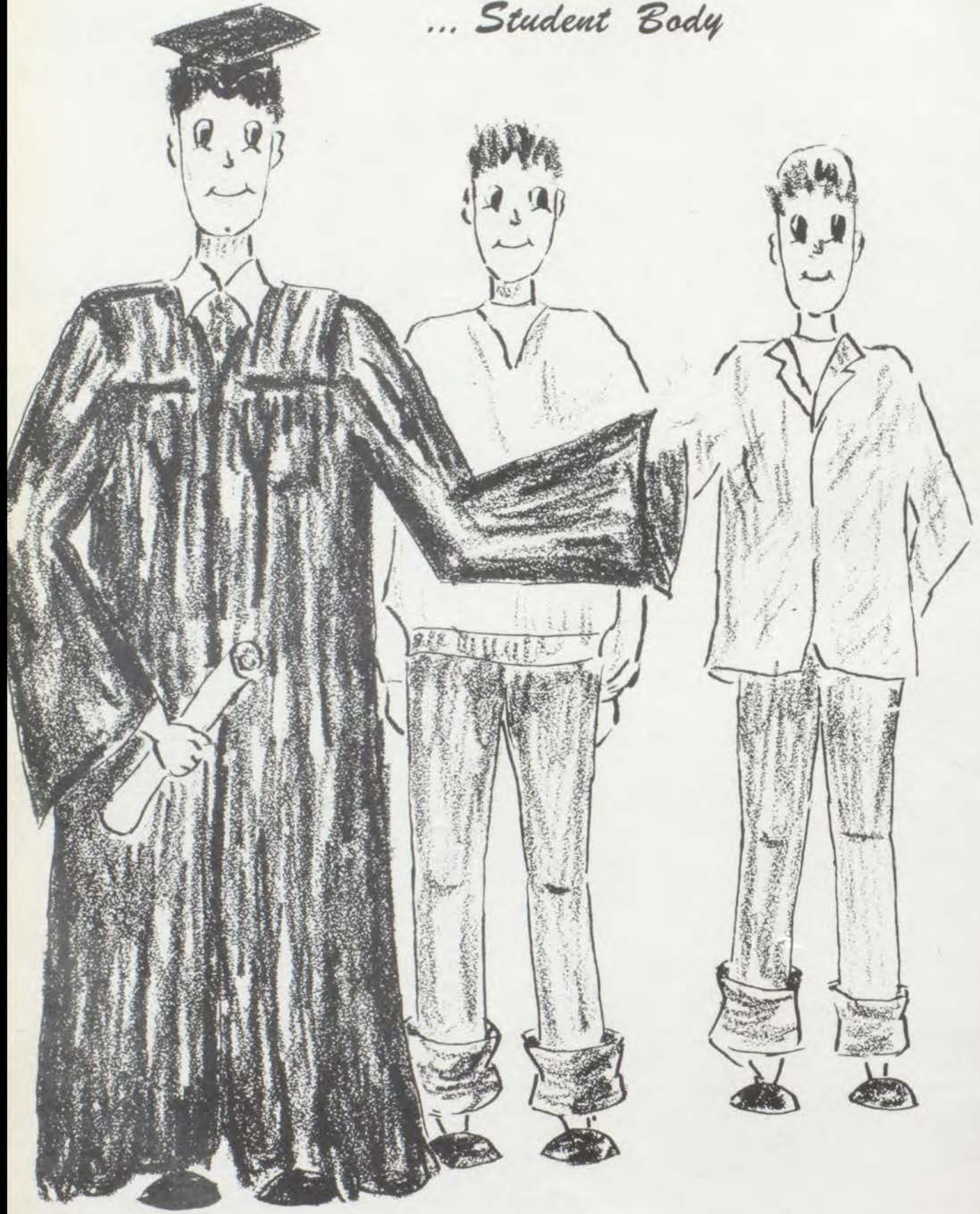
C. R. McLelland, John Haun, Joseph Myrtle, John D. Greer.

## Willy's Bus Drivers



Harry Cohoon, W. O. Gibson Bus Line; William Cavanah, Lord Bus Line; Mrs. Joseph Boswell, Lord Bus Line; Mrs. John W. Pace, Pace Bus Line; John W. Pace, Pace Bus Line; Louis L. Noland, Lord Bus Line; Paul A. Lord, Lord Bus Line.

*... Student Body*







## FIRST SEMESTER OFFICERS

Willie Chrisman, Guardian and promoter of school traditions, has found kindred spirits in the officers of the Senior Class; the school has no more loyal supporters than these. Munro Ransdell was president of the class; he is interested in football.

Larry Evans, who was elected vice-president, was a member of the advertising staff of *The Gleam* and is a sergeant in the ROTC corps.

Thomas Bates was secretary of the class. Tom is interested in football.

R. L. Coberly was class treasurer. R. L. was also Student Council parliamentarian. His school activities include also chorus, basketball, and track.

Munro Ransdell, president; R. L. Coberly, treasurer; Larry Evans, vice-president; Thomas Bates, secretary.

## Senior Class

### SECOND SEMESTER OFFICERS

The second semester officers have been well-qualified and loyal Chrismanites. Leland Fay was chosen president. Leland's activity interests are track and football.

Gary Bergen was vice-president. Gary was also Student Council parliamentarian and president of his home room; he is a letterman in basketball and track.

Shirley Kofford, class secretary, was art editor of *The Gleam*, and is a member of the Art Honor Society, the National Honor Society, the Art Club, the Science Club, the Pep Club, and the As-You-Like-It society.

Jack Wilson, treasurer, is a member of the Science Club and on both the track and the football squads.



Jack Wilson, treasurer; Shirley Kofford, secretary; Leland Fay, president; Gary Bergen, vice-president.



DORA JANE ADAMS  
Future Nurses; Typing Staff.

LLOYD GENE ADAMS

WILLIAM WALTER ALLEGA  
ROTC, Sgt. First Class; National Rifle Association.

DOROTHY MAY ALLEN

ROBERT FREDERICK ALLGRUNN  
Student Council.

JAMES WILLIAM ANDREW  
Thespian; Orchestra; Select Chorus; Student Council; Commercial Club; Mixed Chorus; Track; Speech Play; Junior Play; One-Act Play.

DARRELL EARSEL ATCHLEY

RETA KENNON BADDER  
Girls Chorus.

ROBERT LEROY BAKER

WARREN ROGER BALLEW  
ROTC, Sgt. First Class.

NANCY LOU BARGER  
Science Club; Pep Club; Select Chorus; Nautilus; Spanish Club; Mixed Chorus.

PATRICIA LOIE BATES  
Nautilus; Spanish Club; Girls Quartet; National Honor Society; Select Chorus; A Cappella.

THOMAS DEAN BATES  
Senior Class Secretary; Football; Track.

GERALD ARNOLD BEAN

WALTER PAUL BECK  
Science Club; Select Chorus; Mixed Chorus; Football.

GARY DEAN BERGEN  
Student Council; Basketball; Track.

MARY LEE BLACKBURN  
Library Club, Secretary; Pep Club; Nautilus; Spanish Club; Mixed Chorus; GLEAM Layout Staff, Associate Editor; ENVOY Staff, Reporter; Student Council.

BETTY ANN BLAKE  
Pep Club; Nautilus; Spanish Club; Mixed Chorus.

DARRELL L. BOLT  
Mixed Chorus.

PAULINA FAYE BOLTON

MORRIS GENERALD BOOKER





VIRGINIA LEE BOOKER  
Pep Club; Mixed Chorus; Select Chorus.

REX LYNN BOOS  
Band; Spanish Club; Key Club; Mixed Chorus.

JOHN ARCH BORRON  
 ROTC, Company Commander; National Rifle Association, Vice-Commander; Rifle Team, Co-Captain; Debate.



SHIRLEY ANN BOURKE

CLYDE RAMON BOYD

JOHN HOLDEN BOYD  
 ROTC, First Sgt.; National Rifle Association; Rifle Team.



LOUIS HUDSON BRALEY  
 ROTC, Operations Officer; President, Art Honor Society; Thespian; National Rifle Association; Art Club; Student Council; Spanish Club; Rifle Team; One-Act Play.

JAMES BRESTOGIANIS, JR.  
Football.

WILLIAM THOMAS BROWN  
 ROTC, Platoon Leader; Mixed Chorus.



LEORA FAYE BRUNS  
Spanish Club; Mixed Chorus.

WILLIAM DEAN BUFORD

DONALD LEE BURKETT  
Mixed Chorus; Football; Track.



DAVID LOUIS BURKHARDT

DIANE CAROL CAIRNS  
Select Chorus; Nautilus; Future Homemakers; Spanish Club; Mixed Chorus; Stage Crew; Girls Chorus; A Cappella.

JACQULYNNE JEAN CAMPBELL  
Library Club; Select Chorus; Mixed Chorus.



MALETA BELLE CAMPBELL  
Pep Club; Select Chorus; Student Council; Commercial Club; "M" Club; Mixed Chorus.

SHIRLEE ANN CAMPBELL

KAY HELEN CARBREY



WILLIAM DARRELL CASEY  
National Rifle Association; Spanish Club.

JO ANN CASWELL

ORLENA FAY CATO  
Art Club; Science Club; Pep Club; Nautilus; Spanish Club.

ROBERT EVERETT CHAPMAN  
 MARY ALVIRA CHAPPELOW  
 Commercial Club; Mixed Chorus.  
 SAMUEL JENNINGS CHAPPELOW  
 Mixed Chorus.



ROBERT GRANT CHINNERY  
 ALBERTA MARIE CHRISMAN  
 Select Chorus; Student Council; Nautilus;  
 Spanish Club; Mixed Chorus; ENVOY Staff.  
 JANET CLAUVICE CLOSSON  
 Commercial Club; Mixed Chorus.



DAN LEE CLUTTER  
 Science Club; Band; Orchestra; Student  
 Council; Spanish Club.

R. L. COBERLY  
 Treasurer, Senior Class; Parliamentarian,  
 Student Council; Mixed Chorus; One-Act  
 Play; Basketball.

GERALDINE LOUISE COGAN  
 Pep Club; Commercial Club.



MARY LOUISE COGAN  
 Mixed Chorus.

ROBERT LEE COMSTOCK

HOWARD LEON COOK  
 National Rifle Association.



J. STANLEY COOK

ROSEMARY JANE COOK  
 Science Club; Pep Club; Select Chorus; YOB;  
 Future Homemakers; Mixed Chorus.

WAYNE SAVILLE COOPER, JR.  
 ROTC, Master Sgt.



DONALD GENE CORDES  
 Football; Spanish Club.

VELMA JEAN CORRILL  
 Library Club; Select Chorus; YOB; Student  
 Council; Future Homemakers; Debate; Oper-  
 etta; (Kansas City Schools).

PATSY ANN CRADDOCK  
 Pep Club; Select Chorus; Spanish Club.



BEVERLY JOAN CRAYTON

RICHARD PAUL CREVISTON

KATHRYN LOUISE CULBERTSON  
 Select Chorus; Mixed Chorus.





BETTY JANE CURTIS  
Latin Club, Treasurer.

JANE OLA CURTIS  
Art Honor Society; Art Club; Nautilus; Spanish Club.

KENNETH LEROI CURTIS  
Thespian; Science Club; Chorus; Student Council; National Honor Society; Forensic League; Spanish Club, President; Debate; Future Teachers, President, Vice-president, Secretary; Junior Play; One-act play.



WAYNE GILBERT CUSTEAD

GERALD MONTAGUE DARRAH

JACQUELINE LEA DAVIS  
Pep Club; YOB; Spanish Club; Chorus; Junior Play, prompter.



CARROLL H. DAY  
National Rifle Association.

WILLIAM ARTHUR DEAM  
Chorus; Football; Basketball; Track; Opera; Select Chorus.

JERRY LOWELL DEAN  
Junior Class, Treasurer; ROTC, Captain; National Rifle Association; Science Club, President; Chorus; Student Council; Opera; Advertising Staff; Select Chorus.



DOROTHY MAE DIKE  
Mixed Chorus.

ROGER LEE DILLEE  
ROTC, Second Lieutenant.

JANICE BEVERLY DOBSON  
Pep Club; Spanish Club; Stage Crew.



CARL MERREL DOOLEY  
National Rifle Association.

CATHERINE JANE DOUDNEY  
Pep Club; Student Council; Nautilus, Secretary; Commercial Club; Chorus.

REX EDWARD DOWELL

IRENE DUNN  
Art Club; "M" Club; Spanish Club.

BETTY JEAN DUXBURY  
Chorus; "M" Club.

FAYE PATRICIA DYER  
Art Honor Society; Shakespearean; Pep Club; "M" Club; Spanish Club; Art Club.

ROBERT LEROY EAGER

ALICE LOUISE EASTWOOD  
Shakespearean, Treasurer; Pep Club; National Honor Society; "M" Club, Secretary, Reporter; Spanish Club; Stage Crew; ENVOY Staff; Student Council; Debate.



JO ANN EBELING  
Science Club, Secretary; Pep Club, President, Drill Commander; YOB; Student Council; Spanish Club; Chorus; Future Teachers, Secretary; As-You-Like-It, Treasurer; Select Chorus.



RICHARD EDSON  
Mixed Chorus; Manager, Football, Basketball, Track.

LOIS BELLE EDWARDS  
Girls Chorus.

ROBERT WILLIAM ELGIN  
ROTC, Master Sgt.; National Rifle Association; Science Club; Football.

RUTH IRMA ELSER  
Science Club; Future Nurses; Student Council; Mixed Chorus; Vice-president, National Honor Society.

CARROLL DALE ESKY  
Science Club; Band; Key Club; Mixed Chorus.

LAWRENCE EVANS  
Vice-president, Senior Class; ROTC, Sgt.; GLEAM Advertising Staff.

VAUGHN EVANS  
Football; Basketball; Track

ELAINE FRANCES EWING  
Mixed Chorus.

CHARLES WESLEY FANN

JOAN FARLEY  
Orchestra; Typing Staff; Mixed Chorus; Girls Chorus.

LELAND GILBERT FAY  
Student Council; Football; Track.

DOROTHY MAE FERGUSON  
Commercial Club; Future Homemakers.

DIANN LEE FISHER  
Art Club; Pep Club; Band; Future Teachers; Spanish Club; Commercial Club; ENVOY Staff.

HELEN MAXINE FITCH  
Commercial Club; ROTC, Warrant Officer.

ROBERT C. FLICK

BENJAMIN PATTON FOSTER  
Band; Student Council; Spanish Club; Key Club; Mixed Chorus; ROTC, Sgt.

ROBERT CARL FOXWORTH  
National Rifle Association; Mixed Chorus.

WILLIAM JOE FRIEND  
Art Honor Society; Art Club; Student Council.

ROSEMARY RUTH FRY  
Select Chorus; Spanish Club; "M" Club; Commercial Club; Nautilus; ROTC, Warrant Officer.

DON CARLOS FULLER  
Science Club, Reporter; Sophomore Class; ROTC, Master Sgt.

DELORES MAE GIBLER  
National Honor Society; "M" Club; Mixed Chorus; Latin Club.





THOMAS WILLIAM GIBSON

CHARLES BERTRAM GLASS  
ROTC, Battalion Commander; National Rifle Association, President; Rifle Team, Co-Captain; Honor Society.

JACK E. GOODRICK



JOAN LORRAINE GRAHAM  
Student Council; Spanish Club.

GERALD RICHARD GRAMLICH  
Basketball.

JOYCE MARIE GRAUPNER  
Commercial Club; Future Homemakers; Future Teachers.



DELORES JEAN GREEN

ANNE LUCILLE GRISWOLD  
Art Honor Society; Art Club; Pep Club; Student Council.

MARY FRANCES GUNZEL  
Shakespearean; Pep Club; Student Council; "M" Club, Vice-president, President; Spanish Club; Mixed Chorus.



DARLENE JUNE GUSTAFSON

CHLOE VIVIAN GUYER

JACQUELINE SUE HAGAN  
Mixed Chorus; Girls Chorus; Typing Staff.



WILLIAM HAHN

BARBARA JEAN HALL  
Art Club.

JAMES HOWARD HALL  
President, Sophomore Class (St. Marys).



BEVERLY LEE HAM  
Pep Club; Mixed Chorus; Girls Chorus.

DOROTHY MARIE HANSEN  
Student Council; Commercial Club; Spanish Club.

DANIEL MATTHEW HANSON



DOROTHY PATRICIA HART  
Pep Club; Spanish Club; Mixed Chorus.

DELMAR THEODORE HAZELRIGG  
ROTC, Platoon Leader.

WILBUR ALVIN HEMPY

DELORIS JEAN HENRION  
Mixed Chorus.

DORIS ARLENE HENRION  
Mixed Chorus.

CHARLES ROBERT HIELD  
Junior Class President; ROTC, Captain;  
Thespian; National Rifle Association; Band;  
Spanish Club; Speech Play; Junior Play;  
One-Act Play.

LEANNA JOANN HODGES

WILLIAM EDGAR HOLMBERG

KENNETH LEROY HOLSWORTH  
Mixed Chorus; Football; Track.

J. P. HORN  
Band; Spanish Club.

EARL GENE HORNER

ANNA MAE HOWARD  
Shakespearean, Historian; Student Council;  
Commercial Club, President; Spanish Club.

SHIRLEY K. JACKSON  
Library Club; Pep Club; Future Nurses;  
Mixed Chorus.

DONNA BELLE JAGGER  
Shakespearean; Select Chorus; Commercial  
Club; Mixed Chorus.

JULIA ANN JENKINS  
One-Act Play; ENVOY Staff (Michigan).

EDWARD LEMUEL JOHNSON

ROBERT WILLIAM JOHNSON  
Band; Commercial Club; Spanish Club; Adver-  
tising Staff.

JOANN JONES  
Sophomore Class Treasurer; Shakespearean,  
President; Student Council; National Honor  
Society; Spanish Club; Future Teachers.

PAULA LOUISE JONES  
Shakespearean; Science Club; Pep Club;  
"M" Club; Spanish Club.

BOB L. JUSTICE  
Mixed Chorus.

ANNA LAVERNE KENNEDY  
YOB; Future Homemakers; Mixed Chorus.

JOANN KENNEDY

LOREN ELI KESTER  
Spanish Club.

NOAH ARTHUR KNAPP, JR.  
Stage Crew.





**CORKY KNOCK**  
Football; Basketball.

**SHIRLEY KOFFORD**  
Art Honor Society; Art Club, Vice-president; Science Club; Pep Club; National Honor Society; As-You-Like-It; Student Council; GLEAM Design and Layout Staff; Secretary, Senior Class.

**BETTY JO KUECK**  
Girls Chorus.



**GEORGE FRANKLIN KUHN**

**STEPHEN PAGE LARSEN**  
Student Council; Football; Basketball; Track (not at Chrisman).

**WILLIAM DONALD LATCHAM**  
ROTC, Second Lieutenant; Rifle Association; Chorus; Advertising Staff.



**DOROTHY LOUISE LEWIS**  
YOB.

**JOYCE ILENE LIDKE**  
Pep Club, Vice-president, Cheerleader; Student Council; As-You-Like-It; Commercial Club, Vice-president; Chorus; Advertising Staff.

**BRUCE CURTIS LOGEMAN**  
Science Club; Student Council; Junior Play; One-Act Play; Advertising Staff.



**JEROME LOLLAS**

**BURMAN HENRY LORENSON**

**MARY ARDENALUND**  
Science Club; Pep Club; Select Chorus; YOB; Student Council, Treasurer; As-You-Like-It, President; Future Teachers, President; Speech Play; One-Act Play; Spanish Club.



**BONNIE JEAN LUSSO**  
Pep Club; Nautilus; Chorus; Girls Chorus.

**REGINA LUX**  
Art Honor Society; Art Club; Chorus; Spanish Club; Literary Staff; ENVOY Staff, Art Editor; Quill and Scroll; Pep Club; Girls Chorus.

**BILL RAY LYDAY**  
Art Honor Society; Football; Basketball.



**JACK A. LYNCH**  
Stage Crew.

**JAMES WALTER MALOTT**

**BARBARA FERN MANN**  
YOB, Vice-president, Secretary; Spanish Club.



**ELEANOR DELANE MANN**  
Chorus; Nautilus, Reporter, Historian.

**PHYLLIS JUNE MASTEN**  
Chorus; YOB.

**MARILYN ANNE MASTON**  
Select Chorus; YOB; Mixed Chorus.



BARBARA ANN MATTHEWS

BARBARA JEAN MAYNARD  
Shakespearean; Art Club; Science Club; Pep  
Club, Cheerleader; Future Nurses; Speech  
Play; Junior Play; ENVOY Staff.

GERALD RAY McCANDLESS

LUCILLE MAE McCORMICK  
Student Council; National Honor Society;  
Nautilus; Future Homemakers, Secretary,  
Secretary-Treasurer, President; "M" Club;  
Spanish Club; Typing Staff; ENVOY Staff.

PHYLLIS DAWN McDANDEL  
Sophomore Class, Secretary; Junior Class,  
Secretary; Thespian; Science Club; Pep Club;  
Student Council, Secretary; National Honor  
Society; Forensic League, President; As-  
You-Like-It; Spanish Club; Debate; Speech  
Play; One-Act Play; Senior Football Attend-  
ant.

HELEN CAMILLE McDONALD  
Typing Staff; Art Club; Science Club (at East  
High); Future Nurses.

CLAYTON LUTHER McFARLAND  
National Rifle Association; Science Club;  
Band; Spanish Club.

NORMA LEE McKAY  
Nautilus, President.

GERALD EUGENE McKENZIE

MARGARET McKEVIT  
Art Honor Society, Vice-President; Thespian;  
Art Club, Secretary, Vice-President, Treasur-  
er; Pep Club, Secretary; Student Council;  
Forensic League; As-You-Like-It, Secretary;  
Debate; Speech Play; Junior Play; One-Act  
Play; Layout Staff; Typing Staff; ENVOY  
Staff; Junior Red Cross Board.

EDITH LEOLA McKINNEY  
Commercial Club.

FREDDIE FRANKLIN McKINZIE

MARLENE MASTERSON McPHAIL  
Mixed Chorus.

DOROTHY FAYE MELTON

DONALD J. MERCER

PATRICIA DAWN MEYER  
Art Club; Select Chorus.

BETTY LOU MILLER  
Nautilus; Commercial Club; Spanish Club;  
Mixed Chorus; Pep Club.

JAMES ERNEST MILLER  
ROTC, First Sgt.; National Rifle Associa-  
tion; Science Club; Rifle Team; Mixed Chorus.

STEPHEN S. MILLER, JR.

NANCY JANE MOFFITT  
Nautilus; Future Homemakers.

BETTE JEANNE MOORE  
Pep Club; Forensic League; Nautilus; Span-  
ish Club; Debate.





EDWARD CLEON MOORE  
ROTC; Science Club; National Honor Society;  
Forensic League; Spanish Club; Debate;  
Speech Play.



MARGARET LOU MOORE  
Science Club; Library Club; YOB; Student  
Council; National Honor Society; Nautilus;  
Spanish Club; Mixed Chorus; Girls Chorus;  
Future Teachers.



GERALD GILMORE MORRIS

ELIZABETH JANE MORTON  
Pep Club.

MELVIN D. MULLENAX

NORMA MAY MULLENAX  
YOB, President; Commercial Club; Spanish  
Club.



NORMA LEE NEAS  
Pep Club; Select Chorus; Mixed Chorus.

MARGARET PAULINE NETTER  
Library Club; Mixed Chorus; Girls Chorus;  
Junior Play.

KAY ROSALIE OESER  
"M" Club, Reporter.



MARIAN MARIE ORCHARD  
YOB; Mixed Chorus.

MARY LOUISE ORGAN  
Science Club; Nautilus; Commercial Club;  
Future Homemakers; Future Teachers.

NANCY MAE OSTLUND  
Science Club; Pep Club; YOB; Mixed Chorus.



RAYMOND EARL PASCHALL

GERALD MARTIN PEEK

JOHN ALLEN PENNINGTON

DOROTHY MARIE PERKINS  
Mixed Chorus.

WESLEY EDWIN PETERSON  
ROTC, Lieutenant, Platoon Leader; National  
Rifle Association.

JAMES ROGER PHILLIPS  
Basketball.



KENNETH LEE PHILLIPS

VELMA JUNE PHILLIPS  
Library Club; Mixed Chorus; Operetta.

FRITZI JEANNE PHIPPS  
Shakespearean; Pep Club; Student Council;  
Spanish Club; Junior Play.



JAMES WILLIAM PIMBLOTT  
Band; Student Council; Stage Crew; Junior  
Play; One-Act Play.

KEITH OLEN PLOEGER  
ROTC, Corporal.

FRED O. POTTER  
Basketball; Track.

WILLIAM B. POTTER  
Football.

VIRGIL RAY PREATOR  
ROBERT POPE RANNIE  
ROTC, Captain; National Rifle Association;  
Science Club; Spanish Club, Treasurer; Future  
Teachers; Speech Play.

ALLEN MUNRO RANDELL  
Senior Class, President; Student Council;  
Football; Junior Play; Spanish Club.

DONNA MARIE RAWLINS  
Select Chorus; "M" Club; Mixed Chorus;  
Girls Chorus.

CLARENCE DAVID REECE

CHARLES CECIL REED

KENNETH RAY REED

ELEANOR ANN REYNOLDS  
Pep Club; Nautilus; Chorus; Junior Play;  
Select Chorus.

JOHN HENRY REYNOLDS  
National Rifle Association.

MARY LOU RICE  
YOB.

ROBERT NORMAN RICE  
Student Council; Mixed Chorus.

BARBARA EILEEN RICHARDSON

ROBERT R. RIDDLE  
National Rifle Association; Mixed Chorus.

CHARLENE ANN RINER  
Library Club; Future Homemakers (Lexing-  
ton).

CAROL JEAN ROACH  
Science Club; Select Chorus; YOB, Secretary,  
Reporter; Spanish Club; Mixed Chorus.

DONNA MARIE ROGERS  
Pep Club; "M" Club; Spanish Club.

DOROTHY HELEN ROHRS  
Spanish Club; Mixed Chorus.





TIMOTHY RONDONANSKI  
CARL ROBERT ROSEMAN  
WALTER DONALD ROSS  
Basketball.



MARGARET ANN ROWE  
Future Nurses; Latin Club.

VIRGINIA LEE RUSSELL  
Thespian; Shakespearean, Vice-President; Pep Club, Cheer-leader; Student Council; National Honor Society; "M" Club; Spanish Club, Vice-President; Speech Play; Junior Play; One-Act Play; GLEAM Design and Layout Staff; ENVOY Staff.

BETTY ANN SANDERS



JOHN AMMON SALISBURY  
JOHN FRANKLIN SCHAFER  
HENRY BERNHARDT SCHERER



ANNA RUTH SCHOEMIG  
BARBARA ANN SCHROEDER  
Pep Club; Future Nurses.

WILLIAM TODD SERMON  
Student Council; Spanish Club.

MARY ELLEN SHEARER

RUSSELL JEROME SHERMAN  
Thespian; Science Club; Select Chorus, President; Spanish Club; Mixed Chorus; Speech Play; Junior Play; One-Act Play; Advertising Staff.

BETTE JEAN SHOEMAKER  
Art Honor Society; Art Club; Science Club; Pep Club; Student Council; Future Homemakers; "M" Club; Chorus.



ELEANOR M. SHULL  
Thespian; Pep Club, Cheerleader; Select Chorus; Nautilus, Parliamentarian; Commercial Club; Junior Play.

KAYE SIEGFRIED  
Art Honor Society, Secretary; Art Club, Reporter, Vice-President; Science Club, Treasurer; Pep Club; Student Council; As-You-Like-It, Reporter; Quill and Scroll; Speech Play; Junior Play; Typing Staff; Advertising Staff; ENVOY Staff, Editor-In-Chief.



MARY JANE SIMPSON  
Art Honor Society; Art Club, Treasurer; Pep Club; As-You-Like-It; Commercial Club; Chorus; Advertising Staff; Spanish Club.



CHANCE RAY SMALL  
Select Chorus; Mixed Chorus.

WILEY CLEMON SMALL  
YOB; National Honor Society; Forensic League; Spanish Club; Chorus; Debate.

CHARLES EUGENE SMITH  
Spanish Club.

EDRIE LUCINDA SMITH  
Art Honor Society; Art Club; Science Club;  
Future Teachers, Reporter, Historian.

EDWIN OLIVER SMITH  
National Rifle Association; Mixed Chorus;  
ROTC, Master Sgt.

TOM ALLEN SMITH, JR.  
Vice-president, Junior Class; Science Club;  
Spanish Club; Basketball.

ROYCE McCALL SMITHSON  
National Rifle Association; Rifle Team.

WAYNE LaVERNE SPEASE

STELLA JEAN STANGER

SUZANNE STAPLETON  
Thespian; Science Club; Pep Club; Select  
Chorus; Future Nurses; Student Council; As-  
You-Like-It; Spanish Club, Secretary; Mixed  
Chorus; Future Teachers; Speech Play; One-  
Act Play.

CAROL RAE STEWART  
Shakespearean, Secretary; Science Club; Pep  
Club; Mixed Chorus; Spanish Club; Junior  
Play.

JUNIUS RICE STEWART

CHARLES RAYMOND STOBAUGH

KARLENE ANN STOKES  
Spanish Club; Mixed Chorus.

NORMA JEAN STORY  
Pep Club; Spanish Club; Mixed Chorus.

ARTHUR LeROY STOWELL  
Football; Track.

BARBARA JOAN STRAWACKER  
Thespian; Shakespearean; Science Club;  
Student Council; Forensic League; Spanish  
Club; Debate; Speech Play; One-Act Play.

LEO CLARENCE STROHM

EVELYN MARIE STUMP  
Library Club; YOB, Chorister; Nautilus; Com-  
mercial Club; Spanish Club; Mixed Chorus;  
Future Teachers; Junior Play.

JOAN ELEANOR TALCOTT

LILLIAN ROBERTA TAYLOR

DAVID LYNN THATCHER  
Select Chorus; Stage Crew.

KAY MARIE THOMAS  
Treasurer, Sophomore Class; Art Honor So-  
ciety; Art Club; Student Council; As-You-  
Like-It; Spanish Club; Future Teachers.

JEANETTE LOUISE THOMPSON  
Pep Club; Nautilus; Spanish Club.





JOHN LEWIS THOMPSON

RONALD RAY THOMPSON

SADONNA LEE TIPPET



DELORES MAE TODD

NORMA ALICE TRAYOR

DONNA TRENTHAM

Science Club; Library Club, Secretary, Treasurer; Select Chorus; A Cappella; YOB, President, Vice-President, Secretary, Reporter; Nautilus; Spanish Club; Mixed Chorus; Chorister.



MARIE JESSIE TULL

GRACE ELIZABETH TWENTE

Thespian; Student Council; National Honor Society; Forensic League, Secretary-Treasurer; Spanish Club; Debate; Future Teachers; Speech Play; One-Act Play; As-You-Like-It.

BARBARA JEAN VAN DYKE

Future Homemakers; Spanish Club; Mixed Chorus; GLEAM Design and Layout Staff; Advertising Staff; ENVOY Staff.



WILLIAM WESTWOOD VARDEMAN

Sophomore Class, Vice-president; Junior Class, Vice-president; Select Chorus; Student Council, Vice-president; National Honor Society; Spanish Club; Mixed Chorus; Basketball.

CHARLOTTE LUCILLE VAUGHAN

Library Club; Literary Staff.

EVELYN CAROLYN VEACH



VIOLA ALICE VOLT

Thespian; Pep Club, Reporter; Quill and Scroll, President; Student Council; National Honor Society; As-You-Like-It; Spanish Club; Mixed Chorus; Speech Play; Literary Staff; ENVOY Staff.

MARY ELIZABETH VOGEL

Pep Club; Nautilus; Commercial Club; Mixed Chorus.



ROBERT MASON WADE

WARREN CHARLES WAGNER

ROBERT ALLEN WAITMAN

JACQUELINE WALKENHORST

Pep Club; "M" Club.



JOSEPH WALTER

CHARLENE MARIE WARD

Pep Club; Nautilus; Commercial Club; "M" Club.

SARAH ELIZABETH WARD

Student Council; Spanish Club; Future Teachers.

DAVID RUSSEL WARREN

SUE CATHRYN WATLING  
Shakespearean; Pep Club; Student Council;  
Spanish Club; Mixed Chorus; Typing Staff;  
Advertising Staff; ENVOY Staff.

RONALD RAYMOND WATSON



PATRICIA RUTH WEBER  
Quill and Scroll.

ELEANOR ANN WEDDLE  
Art Honor Society; Thespian; Art Club; Fo-  
rensic; As-You-Like-It, Vice-president;  
Spanish Club; Debate; Speech Play; One-  
Act Play.



MARALYN RUTH WELCH  
Science Club; Library Club; YOB, Vice-  
president; Spanish Club; Future Teachers;  
Select Chorus.



RAMA WELLS  
YOB; Future Homemakers.

JOSEPH THOMAS WESTWOOD  
Thespian; National Rifle Association; Science  
Club; Band; Forensic League; Debate; Speech  
Play; Junior Play; One-Act Play.



JANET CAROL WHEATON  
ROTC, Chief Warrant Officer; Pep Club;  
Select Chorus; Student Council; As-You-  
Like-It, Historian; Commercial Club, Secre-  
tary; Spanish Club; Mixed Chorus; Stage  
Crew; One-Act Play; Advertising Staff.

WILLIAM S. WHENHAM  
Select Chorus; YOB; Mixed Chorus.

JAMES EDWIN WHETSTONE  
Football; Basketball.



ERMA MAY WILLARD  
Nautilus; Future Homemakers, Reporter; One-  
Act Play.

BOB LEE WILLIAMS

ELLEN MARIE WILLIAMS

ELIZABETH WILLIAMS  
Science Club, Reporter; Pep Club, Vice-  
president; Select Chorus; A Cappella; Student  
Council; As-You-Like-It, Treasurer, Parlia-  
mentarian; Spanish Club; Mixed Chorus; Ad-  
vertising Staff; Associate Editor, ENVOY.

*OUTDOORS MAN  
SHOP  
HOTEL*



NYLENE WILLIAMS  
(At Manual High and Vocational School)  
Service Society; Athena Literary Society;  
Scribblers, Sgt. of Arms; Student Council;  
Future Homemakers, Treasurer.

FERN WILSON  
Band.

JACK LEE WILSON  
Science Club; Football; Track.



ROBERT LEE WILSON  
National Rifle Association; Key Club.

DAVID ALVIN WINTER

KENNETH ARMIN WITTHAR

*DEAD*

*T.V.*



DONALD EUGENE WOLFENBARGER

VERNON DAVID WOOD

DAVID ALMA YAHNIG  
National Rifle Association; Band; Stage  
Crew; Track; Basketball.

JAMES RICHARD ZIMMERMAN



The GLEAM staff's right hand MAN--  
Dick Creviston.

## Senior Close-Ups



What's up doc??? wonder Tim Ron-  
domanski, Tom Westwood, Dot Mel-  
ton, Robert Rannie and Kay Thomas.







*Jerry McCandless, James Miller, Bob Johnson, and Morris Booker are receiving vocational training in Office Practice.*



*The way to a man's heart.....or so Fritzi Phipps, Norma McKay and Ruth Elser think.*



*Shirley Kofford with Charles Hield looking on applies make-up to R. L. Coberly. His only comment----- heap lot war paint.*



*In Mechanical Drawing Mr. Cline shows Bruce Logeman and Catherine Doudney how its done.*

# Junior Class



Carol Collins, secretary; Morris McQuinn, vice-president; William Thilking, treasurer; Jack Wear, president.

## FIRST SEMESTER OFFICERS

Willy Chrisman's leaders of the Junior class for the first semester are a representative quartet and well-qualified to hold their offices. Jack Wear was president. Jack had previously served as vice-president in his sophomore year. He is a member of the Spanish Club.

Morris McQuinn was elected vice-president. Morris was a letterman in football and was on the track team.

Carol Collins, class secretary, was also a Student Council alternate; Carol is a member of the "M" Club, the Spanish Club, and the As-You-Like-It society.

William Thilking was treasurer of the class. Bill lettered in football.

## SECOND SEMESTER OFFICERS

The Juniors had a fine slate of officers for the second semester. William Thilking, whose activity interest is sports, was made president.

R. L. Phillips was vice-president. R. L., who was also president of his home room, has a variety of interests. He played football, sang in the chorus, and is a member of Youth-on-the-Beam.

Shirlee Osborne was chosen secretary; Shirlee is a member of the As-You-Like-It society and played major roles in the Speech play and in the Junior class play.

Jack Wear was treasurer, and helped his fellow officers in boosting his alma mater.



R. L. Phillips, vice-president; Shirlee Osborne, secretary; William Thilking, president; Jack Wear, treasurer.

## MR. CLINE'S HOME ROOM - 106

BOTTOM ROW: Joyce Briggs, Geraldine Beckerdite, James Brand, Donald Bartels, Mary Lou Beckerdite, Charlene Andes. SECOND ROW: Beverly Bridges, Nancy Bentley, Joyce Bates, De Lores Bowman, Mary Ann Allen, Peggy Adkins, Betty Allison. THIRD ROW: Jeanne Benson, Marilyn Andes, Emilie Adkins, Georgia Alton, Marilyn Boswell, Thelma Borgman, Clara Andes. FOURTH ROW: Russell Allen, Jean Archison, Ralph Brewer, Robert Brightwell, Kenneth Archer, Eugenie Bradley, Everett Adams. TOP ROW: Robert Barney, Robert Barlow, Shelby Brightwell, Richard Baird, Fred Goebel, Gene Anderson, Kenneth Beals, Ronald Bartlett.



MISS KENNEDY'S HOME ROOM - 208

BOTTOM ROW: Peggy Coen, Joanne Chiles, Barbara Brown, Barbara Bryant, Carol Collins, Cora Brown. SECOND ROW: Barbara Burns, Barbara Burroughs, Delores Comer, Parealee Bryant, Lois Case, Jo Ann Carlock, Patricia Clark, Shirley Butcher. THIRD ROW: Ronald Casselman, Wesley Burns, Ronald Burns, John Butts, Joe Cocklin, Richard Chandler, Carl Cogan. FOURTH ROW: Wayne Bruder, Donald Cannon, Robert A. Chapman, Lester Clark, Eddie Charpie, Ann Clark, Susan Choplin, Joan Cason. TOP ROW: Jerry Cadwell, Delbert Casebolt, Newton Brown, Tom Caviness, Richard Byrne, David Clark, Jack Buchan, Stewart Carson.



MRS. LEARNARD'S HOME ROOM - 207

BOTTOM ROW: Elaine Danforth, Patty Ellis, Ermaleen Crim, Martha Conner, Carol DeBroeck, Joanne Doutt. SECOND ROW: June Crenshaw, Shirley Decker, Alberta Douglas, Marilyn Dagley, Betty Dudley, Patsy Ruth Faunce, Theresa Crass. THIRD ROW: Ann Conrow, Marietta Corey, Virginia Davis, Irene Fann, Emma Irene Curtis, Patricia Faler, Donna Beth Davis. FOURTH ROW: James Dexter, Birl Ewing, John Dunn, Kenneth Dyer, Wayne Davidson, Gerald Edwards, Fred Fenson. TOP ROW: Ronald Eiman, James Ewing, Russell Etzenhouser, Tommie Edmunds, Vernon Darling, Merle Dove, Gene Dexter, Bruce Coryell.



MISS RILLER'S HOME ROOM - 210

BOTTOM ROW: Patty Harlan, Margaret Hall, Jill Gilbert, Wanda Lou Fields, Virginia Grayer, Donna Hart. SECOND ROW: Deloris Griffiths, Nancy Hattey, Karlene Fulton, Tom Freeman, John Graham, Jack Hamm. THIRD ROW: Shirley Flagg, Marie Gradi, Patty Gragg, Evelyn Gillespie, Elaine Foxworth, Donna Haas, Tharon German. FOURTH ROW: Marcita Griswold, Barbara Guyer, Viola Haynes, Charles Fickle, Bonnie Frala, Celia Fry, Jacqueline Hawkins. TOP ROW: David Freeman, Philip Gregory, Clifford Hatch, Vernon Hazelrigg, Dale Griessel, William Gibson, Philip Goodwin, Dan Green.





MISS SAMPSON'S HOME ROOM  
- 307

BOTTOM ROW: Joan Jenkins, Fairy Heide, Darlene Huffman, Marise Honeyball, Connie Herb, Louise Hurlbut. SECOND ROW: David Keeney, Mary Carol Knabe, Joyce Higgins, Grace Holmes, Marie Inman, Bobbie Hedrick. THIRD ROW: Margaret Kuhlman, Stella Hunter, Mary Lou Higgins, Richard Hulse, Delano Kennon, Doris Huntsucker, Bessie Hill. FOURTH ROW: John Kleuver, Charles Kleuver, Robert Knotts, Jerry Johnson, Don Johnson, Robert Kline, James Hieronymus. TOP ROW: Don Johnson, Steve Johnson, Dean Heffner, Douglas Jones, Jerry Jones, Joe Dick Hightower, Jack Justice, Frank Holman.



MRS. SCHROEDER'S HOME ROOM - 301

BOTTOM ROW: Letta Moore, Betty Lusso, Bette Luker, Joanne Nelson, Betty Lane, Shirley Owens. SECOND ROW: Judith McClure, JoAnn Moore, Shirley Mock, Carole Langton, Judy Miller, Joan Pace. THIRD ROW: Mary Louise Malott, Frank Painter, William Lowther, Paul Moyer, William Main, James LaDue, Alice Martin. FOURTH ROW: Christie Latimer, Norman Liddle, Shirley O'Neal, Shirlee Osborne, Delores Lusso, Ronald Mills, Donald Liddle. TOP ROW: Eddie McLees, Morris McQuinn, Carlton Milby, Ronald Mustain, Harold McElroy, Richard Mabbott, Larry Munger, Virgil Lafferty.



MISS SMITH' HOME ROOM  
- 109

BOTTOM ROW: Patty Robertson, Leta Jo Phillips, Gladyce Phillips, Frances Rogers, Juanita Pugh, Marilyn Powell, Betty Rountree. SECOND ROW: Carol Pickett, Frances Pickett, Mary Ann Rice, Wanda Plumleigh, Joyce Ryerson, Laura Paris, Wynona Ryder, Geraldine Remington. THIRD ROW: Patricia Renfrow, Roger Pointer, Donald Rhyan, Monte Rawlings, Jerry Preator, Helen Propst, James Maness. FOURTH ROW: Ronald Price, Corky Rupe, James Pritchard, Richard Rice, Frank Potter, Gary Rawlings, Edgar Patterson. TOP ROW: Jack Prock, Ronald Polfer, Edward Reece, Russell Patterson, Morton Routon, Charles Rich, Kenneth Rall, Lawrence Pederson.

MISS WAITMAN'S HOME ROOM  
- 201

BOTTOM ROW: Trula Sawyers, Ruth Sellers, Rosa Schoemig, Barbara Smith, Sharon Spencer. SECOND ROW: Joan Shepherd, Joanne Shelton, Joann Smith, Mary Smedley, Shirley Scherer, Beverly Simcosky. THIRD ROW: Casper Sholes, George Shine, Joye Sousley, Carolyn Shakespeare, Dorothy Smith, Marjory Smith, Delores Shadel. FOURTH ROW: Patricia Shirk, Don Smith, Don Sell, John Schmidt, David Specht, Gary Snow, Elaine Shanahan. TOP ROW: Leonard Skaggs, Tommy Schafer, Leland Scott, Richard Smith, Neal Scribner, Harold Smith, Ray Sermon.



MR. WEBB'S HOME ROOM  
- SHOP

BOTTOM ROW: Donna Teague, Nancy Turner, Delores Tandy, Shirley Tiberghien, Donita Sweet. SECOND ROW: Vivian Vail, Barbara Van Loon, Mildred Stephenson, Betty Thomas, Martha Turner, Roberta Walker. THIRD ROW: Ida Mae Stewart, Pauline Stark, Carol Suhr, Joyce Sprague, Joan Wade, William Thomas. FOURTH ROW: Johnny Terryberry, Ralph Towers, Phillip Stark, Jerry Staniford, Edwin Stevens, Gene Squires, Edwin Thompson. TOP ROW: John Taylor, Frank Wagner, Howard Tignor, William Thilking, James Trout, James Tutor, Charles Thompson, William Struwe.



MR. TUCKFIELD'S HOME ROOM  
- 304

BOTTOM ROW: Anne Watkins, Martha Warren, Louise Wilkie, Pearl Ward, Patty Wood. SECOND ROW: Joanne Wilkinson, Keith Weddle, Roger Webb, Oren Stephens, Louis Wilkie, Joan Ward. THIRD ROW: Patty Whiting, Kathryn Wrigley, Don Willhoit, James Williamson, Jerry Wood, William Winter. FOURTH ROW: Darrol Yates, Elizabeth Willis, Janis Williams, Joycelyn Ward, Barbara Zimmerman, Ruth Ann Ziegenhorn, Barbara Wingate. TOP ROW: Richard Whitehouse, Grenfell Woodward, Norma Westphal, Althea Wildermuth, Lois Williamson, Jack Wear, Stanley Whiting, Roger Webb.



# SOPHOMORE CLASS



Russell D'Anna, president; Barbara Allen, secretary; Marcia Mueller, treasurer; John Bill Pace, vice-president.

## SECOND SEMESTER OFFICERS

The Sophomores returned to office for the second semester three persons who had served during the first term. Russell D'Anna was again president; his major interest among extra-curricular activities is sports.

John Bill Pace was again the vice-president. John Bill is interested in football and basketball.

Marcia Mueller served as secretary; she is a member of the Pep Club, the Science Club, and the As-You-Like-It literary society.

Norma Cranmer, treasurer, is a member of the Art Club, the Commercial Club, and the Future Homemakers organization.



John Bill Pace, vice-president; Marcia Mueller, secretary; Russell D'Anna, president; Norma Cranmer, treasurer.

## MRS. BERRY'S HOME ROOM - 206

BOTTOM ROW: Rayburn Baker, William Barr, Thomas Armstrong, Myron Andes, Gene Anson, James Adams. SECOND ROW: Berenice Ballinger, Isabel Bailey, Naomi Allen, Patricia Bashor, Janis Allen, Barbara Allen, Lynda Anderson, Eva Lee Amer. THIRD ROW: David Atkins, David Baker, Donald Beck, William Barnard, Jack Bartlett, Dean Austin. FOURTH ROW: Patty Ballew, Anna Mae Beuersten, Howard Adler, Jane Atchison, Betty Barnes, Betty Amos, Carolyn Barnes. TOP ROW: Donald Bain, Joe Barron, Ward Badder, Richmond Anderson, Merele Amos, Sherman Beachner, Osborne Beck, Paul Andrew.



### MISS CARROL'S HOME ROOM - 200

BOTTOM ROW: Robin Brunson, William Brockman, Mary Ann Brestogianis, Patricia Butler, Sadie Blankership, Emma Butler, Herbert Bultemeier. SECOND ROW: Sharlene Bradley, Mary Lou Bolton Carol Cannon, Annalu Boatwright, Donna Brown, Gloria Bishop, James Borland, Vernon Burroughs. THIRD ROW: Valeen Braley, Alice Bittle, Bettye Brooks, Norma Bright, LaNelle Brunson, Carolyn Buchan, Phyllis Brown, Carolyn Bromley. TOP ROW: Frances Calvin, Adrian Earl, Dennis Bright, William Burgen, James Braden, Sharon Blann, Nancy Bradshaw.



### MISS EVAN'S HOME ROOM - 216

BOTTOM ROW: John R. Cogan, David Cole, Sandra Conrow, Delores Case, Joe Ceballos, Melvin Crenshaw. SECOND ROW: Jane Custead, Carol Dalberg, William Casey, Albert Crow, Betty Darling, Judy Chapman, Betty Cox. THIRD ROW: Victor Cooper, Richard Castle, Donald Curd, Norma Cranmer, Harry Cogan, Carol Lynne Constance, Jerry Chadwick. FOURTH ROW: Robert Chapman, Richard Coulter, Richard Clothier, Gary Craig, Janet Conrad, Rosella Day, Barbara Cloin. TOP ROW: Charles Cavanah, Frank Church, Russel D'Anna, James Crawford, Grace Clark, Shirley Cooley, Velma Davies, JoAnn Childers.



### MISS JOHNSON'S HOME ROOM - 114

BOTTOM ROW: Twyla Ferguson, Alice Eldridge, Duane Dieckman, Janet Evans, Emily Dike. SECOND ROW: Donnie Douth, Robert Dyer, Joan Drake, Joe Bill Dodson, Dean Ferguson, Nancy Duncan. THIRD ROW: Frances Douth, Nelda Ebeling, Dorothy Duvall, Patricia Dickey, Delores Ethington, Annetta Edmondson, Beverly Douglas. TOP ROW: Lois Emerick, Shirley Enloe, David Fender, James Fern, Robert Edson, Sharon Diamond, Katherine Dimmel, Ann Dennis.





### MISS LYON'S HOME ROOM

- 104

BOTTOM ROW: Roger Frisby, Nancy Flanders, Page Forsee, James Goodwin, Conrad Finzoll, Martha Green, Joanne Fitzpatrick. SECOND ROW: Mary Carolyn George, EuLalie Gatchet, Margie Green, Glenna Gouldsmith, Rosie Garrett, Sue Jon Foster, Carol Giffen, Loretta Fields. THIRD ROW: Donna Rae Fleeman, Sue Gibson, Donnie Gibson, Stanley Gage, Bob Gore, Gene Fisher, Carole Gibson, Virginia Gerber. TOP ROW: Grace Gregg, Norma Ginn, Freddy Fitzgerald, James Fronkier, Thomas Graham, Fred Garrison, Howard Foland, Nancy Gibson, Charline Gregg.



### MISS PAGE'S HOME ROOM

- 313

BOTTOM ROW: Glen Helverson, Eddie Hemy, Lee Holman, Robert Grove, Douglas Hagan, William Harlan. SECOND ROW: Winola Hart, Judy Hall, Raymond Heath, Charles Harrison, Jeanette Hobbs, Barbara Helm. THIRD ROW: James Herod, Barbara Hammond, Shirley Harrington, Phyllis Hall, Fred Hall, Harry Hayner, Virginia Holman. FOURTH ROW: Alma Griffiths, Marsha Lee Haukenberry, Shirley Hodges, Joan Holmes, Irene Hagen, Mary Ann Hightower, Mikie Hoban, Tommy Holmes. TOP ROW: William Heather, Earnestine Griffith, Beverly Hattey, Fern Himes, Judith Heinrichs, Janice Hatcher, William High.



### MRS. PIPER'S HOME ROOM

- STUDY HALL

BOTTOM ROW: Oscar Jennings, George Jennings Jack Johnson, Monte Kahler, Wayne Kettner, David Horne, Sherman Horsley. SECOND ROW: James Jackson, Laverne Houston, Lenora Kendall, Dorothy Jones, Betty Kendall, Nancy Julian, Beverly Isaac. THIRD ROW: Gray Jageman, Beverly Jacob, Patricia King, Betty Kaylor, Wanda Hunt, Ruth Justice, Charles Kilgore. FOURTH ROW: William Kalthoff, Vernon Johnson, Susann Kearnes, Donna Hurshman, Sharon Jackson, Roger Horne, William Julian. TOP ROW: Kenneth Hurshman, James Kinne, William Johnson, Golden Howery, Lois Huntsucker, Virginia Jennings, Barbara Horner, Fern Kitchen.



### MISS RICE'S HOME ROOM

- 212

BACK ROW: James Larson, Evan Lewis, Joseph Lillywhite, Charles McCorkle, Raymond Latham, John L. Laughlin, Jack LaRue, Jerry Lawler. SECOND ROW: Mary Lesh, Lucy Lesh, Fay Kohlman, Jacqueline LaRue, Norma Lytle, Peggy Kunkle, Frances Leap. THIRD ROW: Roberta Lanham, Nancy Lazenby, Richard Lowell, Wallace Kueck, Katherine McLaughlin, Katherine McKenzie, Sadie Lindsey. SECOND ROW: Rita Knabe, Martha Kline, Clara McCord, Stanley Krueger, Donald Lynch, Mary Ann McCluhan, Etta Krueger. TOP ROW: John Landis, Charles Leamon, Elvin McEvers, William McBride, Leonard Lemka, James McCollum.



### MISS SINGLETON'S HOME ROOM

- 209

BOTTOM ROW: Andy Martinovich, Robert Moore, Alvin Morris, Paul Macrae, Thomas Munsterman, George Murphy. SECOND ROW: Betty Sue Morris, Jimmie Sue Melton, Mary Moore, William Miller, Carmen Maynard, Patricia Maxwell. THIRD ROW: Beverley Masoner, Robert Manley, Laura Morgan, Dixie Mock, Norma Mitchell, Elizabeth Makemson. FOURTH ROW: Wanda Moffitt, Dorris Marshall, Carole Miller, Fred Miles, Jan Miller, Dolores Martin, Shirley McMullen. TOP ROW: Joe Mangum, Ronald Moore, Shirley Middleton, Barbara Moore, Marcia Mueller, Kenneth Moffitt, Kent Mueller, Donald Miles.



### MISS SUR BAUGH'S HOME ROOM

- 308

BOTTOM ROW: Stanley Poncelet, Richard Perkins, Richard Parish, Michael Niflis, Clyde Powell, Donald Pleacher. SECOND ROW: Nancy Prichard, JoAnn Overman, John Pace, Tommy Penticuff, Dale Peffer, Mona Myers, Billie Jean Parsons. THIRD ROW: Patricia Pope, Velma Phillips, Shirley Payne, Donna Payne, Irene Pleem, Carol Preston. FOURTH ROW: Norma Neill, Doris Palmer, Darrell Petre, Allen Peffer, Stewart Myers, Carole Porter, Mildred Patrick. TOP ROW: Tommy Oldham, Gene Plowman, Carl Olson, Terry Pritchett, Leon Perkins, Donald Ploeger, Robert Parker, Marvin Petentler.





MR. WEBER'S HOME ROOM - 309

BOTTOM ROW: Larry Sampson, Betty Rinehart, Beverly Rinehart, David Rushton, Betty Rocky, JoAnn Ransdell, Frank Roberson. SECOND ROW: Yvonne Rhyan, Sylvia Sallee, Sarah Reynolds, Darlene Faye Robinson, Clara June Reed, Marjorie Richardson, Faye Sanders. THIRD ROW: Barbara Ruppert, Nancy Reich, Betty Ross, Roger Redford, Frances Quick, Mary Sue Rauh, Annette Sage, Alice Reed. TOP ROW: James Riley, David Roseman, Conrad Ream, Ollie Ragan, John Robertson, Phillip Ruedy, Harold Rader, Marvin Query.



MR. WICKE'S HOME ROOM - 211

BOTTOM ROW: Lucinda Sears, Joyce Sheets, Gina Smith, Virginia Sargent, Janice Shaneyfelt, Louise Sloan, Parvalyn Stephens. SECOND ROW: Robert Shine, Carol Spangler, Donna Simpson, Mae Stevenson, Geraldine Stillwell, Gloria Smith, David Schwensen. THIRD ROW: William O. Smith, Roy Starcher, Alexander Smith, James Sloan, Thomas Siegfried, John Sinclair, Robert Speaks. TOP ROW: William R. Smith, John Schuler, Howard Shields, William L. Smith, Clarence Stamp, George Shultz, Vernon Sperry, Delbert Sloan.



MISS STREET'S HOME ROOM - 112

BOTTOM ROW: Alice Young, Chell Tousley, Elaine Zeikle, Lee Turner, Ruth White, Artelyn White, Rosalie Young. SECOND ROW: Rachel Willoughby, Darlene Votava, Julia Tandy, Betty Theiss, Noreen Talcott, Erlene Willoughby, Shirley Ann Wilson, Dolores Williams. THIRD ROW: Connie Utz, Donna West, Dolores Watson, Beverly Wilson, Janice Trentham, Donna Young, Jean Swinney, Etta Mae Wright. TOP ROW: Geraldine Welborn, June Winter, Jacque Wiley, Eloise Whitney, Marilyn Yeager, Dorothy Story, Elaine, Wiersma, Carol Wolf.

## MR. HOPKIN'S HOME ROOM

BOTTOM ROW: Richard Wagner, Gene Tissue, Frank White, Reid White, William White. SECOND ROW: Jerry Wingo, Larry Wood, David Williams, Russell Williams, Jack Toliver, Richard Willoughby, Robert Warren. THIRD ROW: Roger Waage, John Stone, Russell White, George Wilson, Ronald Wright, Reggie Stoner, Martin White. TOP ROW: James Stockton, Gene Thomas, Robert Vinyard, Don Witt, Lloyd Swan, Toby Turnbow, William West, Kenneth Wagener.



## UNDERCLASSMEN ANTICS



*"Confusin' ain't it!!!" or so says Donald Beck.*



*"Wait till we're seniors," were the remarks of David Rushton and Frankie Roberson to R. L. Coberly and Gary Bergen.*

# School Life

Dear Sir,  
It was a wonderful experience to have you all.  
I hope you enjoyed the trip and the  
time spent in school. I hope you  
will be back in school soon.





# SCHOOL CALENDAR

## Fall



### September

- 5 Faculty Meeting
- 6 School Opened
- 15 Football, Raytown, there, won 21-18
- 22 Football, Paseo, here, won 20-12
- 28 P. T. A. Meeting
- 29 Football, St. Joseph Benton, here, won 14-7

### October

- 6 Football, North Kansas City, there, won 26-0
- 13 Football, Excelsior, here, tie 0-0
- 21 Football, St. Joseph Lafayette, there, lost 13-37

26 P. T. A. Luncheon

27 Football, St. Joseph Central, here, lost 6-32

### November

- 2 P. T. A. Meeting
- 3 Speech Play, "Blithe Spirit"
- 3 Football, Pembroke, there, won 13-7
- 9 Orchestra Program
- 10 Football, Wentworth, here, tie 13-13
- 17 Football, Northeast, here, lost 0-28
- 21-22 Nites Out, Program by the Junior High School.
- 22-26 William Jewel Basketball Tournament-won

## Winter

### December

- 1 Basketball, East, here, won 42-40
- 5 Basketball, Excelsior, here, won 36-24
- 7 P. T. A. Meeting
- 8 Basketball, St. Joseph Lafayette, there, won 36-29
- 12-15 Ruskin Tournament- second place.
- 15-16 Junior Play, "My Sister Eileen"
- 19 Basketball, Benton, there, won 44-23
- 21 Christmas Vacation

### January

- 2 School Reconvenes
- 2 Basketball, St. Joseph Central, there, lost 36-40
- 5 Basketball, North Kansas City, here, won 33-32
- 9 Basketball, Raytown, here, won 38-32

- 12 Basketball, North Kansas City, there, lost 26-28
- 19 Basketball, Wentworth, here, won 39-42
- 19 End of First Semester
- 23 Basketball, St. Joseph Lafayette, here, won 53-31
- 26 Basketball, Wentworth, there, won 56-31

### February

- 2 Basketball, St. Joseph Benton, here, won 28-16
- 8-9 One Act Play Contest
- 13 Basketball, St. Joseph Central, here, won 52-51
- 16 Band Show
- 19-23 Regional Tournament, second place
- 21 P. T. A. Meeting
- 28 Quill and Scroll Dinner and Initiation

## Spring

### March

- 1-2 Junior High School plays
- 5-6 Shan variety show "Through the Years."
- 8 P. T. A. Fathers' Night
- 9 R.O.T.C. Military Ball
- 17 Track meet, St. Joseph Central
- 23 Track meet, Kemper Military Academy
- 30 Art Exhibit
- 31 State Indoor Track Meet

### April

- 5-6 Senior Play, "The Willow and I"
- 11 Diversified Occupations Banquet

- 13 Spanish Department Fiesta
- 20 Track Meet, William Jewell
- 27 Track Meet, Pony Express League

### May

- 4 Music Festival, Vocal
- 10 Field Night
- 11 State Outdoor Track Meet
- 11 Art Honor Society Initiation
- 18 St. Joseph Relays
- 20 Senior Sermon
- 24 Commencement
- 25 School Closes



# LAST MINUTE HONORS

LLOYD ADAMS, Student Council President.  
 JIM ANDREW, One Act Play.  
 WARREN BALLEW, One Act Play.  
 NANCY BARGER, Nautilus Literary Society Reporter.  
 JOHN BORRON, National Honor Society.  
 DIANE CAIRNS, National Honor Society.  
 JACQUYLYNNE CAMPBELL, One Act Play, Third Place Actress.  
 MALETA CAMPBELL, Shakespearean Literary Society.  
 SHIRLEY CAMPBELL, One Act Play.  
 MARY CHAPPELOW, National Honor Society.  
 ALBERTA CHRISMAN, Nautilus Literary Society, Reporter.  
 GERALDINE COGAN, Nautilus Literary Society.  
 KENNETH CURTIS, Senior Play, One Act Play, First Place Actor.  
 CARROL DAY, One Act Play.  
 JERRY DEAN, Quill and Scroll, National Honor Society.



ROGER DILLEE, R.O.T.C. Company Cadet Captain.  
 JANICE DOBSON, Senior Play, One Act Play, Thespian.  
 ALICE EASTWOOD, One Act Play, Second Place Actress, Quill and Scroll.  
 LELAND FAY, National Honor Society.  
 DOROTHY FERGUSON, National Honor Society, Future Homemakers Secretary, One Act Play, Honorable Mention.  
 HELEN FITCH, National Honor Society.  
 ROSEMARY FRY, National Honor Society.  
 TOMMY GIBSON, One Act Play.  
 MARY GUNZEL, Shakespearean Literary Society Reporter.  
 DOROTHY HANSEN, Shakespearean Literary Society.  
 CHARLES HIELD, Senior Play, One Act Play, Honorable Mention, Thespian President, Colonel McCormick Medal.  
 ANNA MAE HOWARD, National Honor Society.  
 ROBERT JOHNSON, National Honor Society, Quill and Scroll.  
 JO ANN JONES, Future Teachers President.  
 ANNA KENNEDY, Commercial Club.  
 JO ANN KENNEDY, One Act Play.  
 BILL KING, One Act Play.  
 SHIRLEY KOFFORD, Quill and Scroll, Art Club Secretary, As You Like It Dramatic Society President, R.O.T.C. Sponsor Captain, Senior Play, Thespian.



JOYCE LIDKE, Pep Club, President, National Honor Society, Senior Play, Quill and Scroll.  
 BRUCE LOGEMAN, One Act Play, Senior Play, Student Council Parliamentarian, Thespian Vice-president.  
 MARY LUND, National Honor Society.  
 REGINA LUX, National Honor Society.  
 ELEANOR MANN, Nautilus Literary Society Vice-president.  
 BARBARA MATTHEWS, National Honor Society.  
 BARBARA MAYNARD, Shakespearean Literary Society Vice-president.  
 LUCILLE McCORMICK, Future Homemakers

President, Quill and Scroll.  
 PHYLLIS McDANDEL, R.O.T.C. Sponsor Colonel, State National Forensic League Extemporaneous Speaking First Place.  
 CAMILLE McDONALD, Quill and Scroll.  
 NORMA McKAY, One Act Play.  
 MARGARET McKEVIT, Quill and Scroll.  
 BETTY MILLER, Nautilus Literary Society Treasurer.  
 BETTY MOORE, National Honor Society.  
 EDWARD MOORE, Spanish Club President.  
 MARGARET MOORE, Nautilus Literary Society President, Quill and Scroll, Student Council Secretary, D.A.R. Award Winner, Spanish Club Secretary.  
 JANE MORTON, Pep Club Secretary.  
 MARY ORGAN, Nautilus Literary Society Secretary, National Honor Society, Future Teachers Treasurer.  
 KAY OESER, National Honor Society.  
 VELMA PHILLIPS, One Act Play.  
 ROBERT RANNIE, National Honor Society, One Act Play, Thespian.  
 DONNA ROGERS, Shakespearean Literary Society.  
 VIRGINIA RUSSELL, Senior Play, Commercial Club, Shakespearean Literary Society President, Quill and Scroll, R.O.T.C. Sponsor Captain, Thespian Secretary.  
 BETTY SANDERS, One Act Play.  
 KAYE SIEGFRIED, National Honor Society, One Act Play Honorable Mention, R.O.T.C. Sponsor Major, Student Council Treasurer, As You Like It Vice-president, Thespian Reporter, Science Club Secretary.  
 MARY JANE SIMPSON, One Act Play, Art Club Reporter.  
 CLEMON SMALL, Spanish Club Treasurer.  
 TOM SMITH, Student Council Vice-president, National Honor Society.  
 SUZI STAPLETON, One Act Play, As You Like It Dramatic Society Historian, Gleam Staff, Senior Play, Commercial Club, National Honor Society.  
 CAROL RAE STEWART, R.O.T.C. Sponsor Captain, Senior Play, One Act Play, Science Club Treasurer, Thespian.  
 NORMA STORY, One Act Play.  
 BARBARA STRAWHACKER, One Act Play, National Honor Society.  
 EVELYN STUMP, National Honor Society.  
 JOAN TALCOTT, One Act Play.  
 DONNA TRENTHAM, Library Club President.  
 KAY THOMAS, Future Teachers Secretary, Spanish Club Vice-president, National Honor Society, Art Club-President.  
 GRACE TWENTE, Future Teachers Historian, Thespian.  
 VIOLA VELT, Spanish Club Reporter, One Act Play.  
 SUE WATLING, Shakespearean Literary Society Secretary.  
 CHARLENE WARD, Nautilus Literary Society Parliamentarian.  
 MARALYN WELCH, Library Club Reporter.  
 TOM WESTWOOD, Senior Play, One Act Play, Thespian Treasurer.  
 JANET WHEATON, National Honor Society, R.O.T.C. Sponsor Captain, One Act Play, Quill and Scroll, As You Like It Dramatic Society Secretary, Thespian.  
 ELIZABETH WILLIAMS, As You Like It Dramatic Society Reporter, National Honor Society, Quill and Scroll.  
 JACK WILSON, Science Club Reporter.



# HIGH

Excelsior goes up in smoke.



The battle of the locker rooms.



With student elections come campaigns.





# LIGHTS

My candidate and yours . . . .



Ummmm good!!!

Dorothy Dike breaks the pinata  
as they celebrate Christmas, Span-  
ish style.



# SENIOR PLAY, "THE WILLOW AND I"



Shirley Kofford



Charles Hield



Virginia Russell

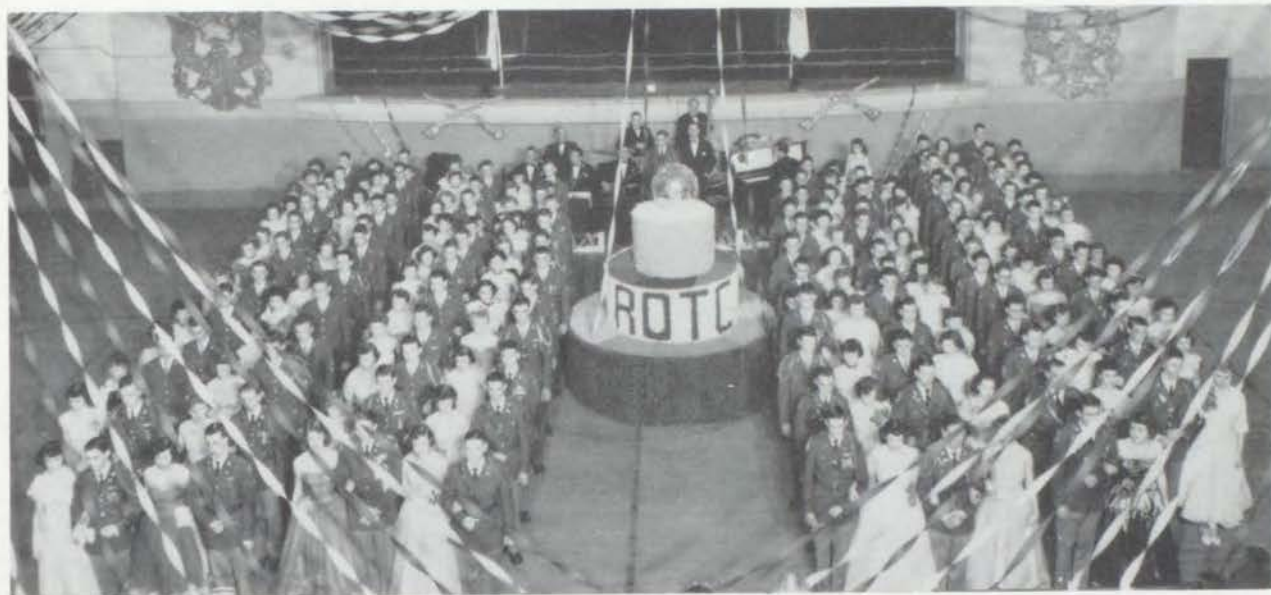
## CAST

Bessie Sutro.....	Virginia Russell	Kirkland.....	Charles Hield
Tinny.....	Janice Dobson	Duke Todd.....	Frankie Roberson
Mara Sutro.....	Shirley Kofford	Mabel.....	Carol Rae Stewart
Bailey.....	Frankie Roberson	Dr. Trubee.....	Kenneth Curtis
Theodore Sutro.....	Jerry Sherman	Director.....	Mrs. Mary Foster Williams
Millie Sutro.....	Joyce Lidke	Student Assistants.....	Suzi Stapleton
Dr. Oliver.....	Tommy Westwood	.....	Bruce Logeman
Robin Todd.....	Charles Hield		



BOTTOM ROW: Carol Rae Stewart, Shirley Kofford, Charles Hield, Virginia Russell, Frankie Roberson. TOP ROW: Bruce Logeman, Tommy Westwood, Kenneth Curtis, Jerry Sherman, Suzi Stapleton, Janice Dobson.

# ANNUAL MILITARY BALL



Cadets and their dates as seen in the colorful Grand March.



PHYLLIS McDANDEL, Battalion Commander  
Lieutenant Colonel.  
KAYE SIEGFRIED, Battalion Executive Sponsor  
Major.  
CAROL RAE STEWART, Company A Sponsor  
Captain.

VIRGINIA RUSSELL, Company B Sponsor Cap-  
tain.  
SHIRLEY KOFFORD, Company C Sponsor Cap-  
tain.  
JANET WHEATON, Company D Sponsor Captain.

# Classroom



Future Rembrandts develop the techniques of design.



The Rifle Team receives shooting jackets from local citizens.



Students learn a practical art in typing class.

# Scenes

The unknown field of Chemistry is explored by young chemists.



Sociology class provides an interesting discussion of social problems in a pleasant atmosphere.

First semester Driver Education class, Mr. Stinson, and Mr. Redford look on as Mr. Bostian presents Supt. Keith the keys to the Driver Education car.



# ONE - ACT

## LAST FLIGHT OVER

### Cast

Mattie.....Kaye Siegfried  
Sairy.....Sharon Diamond  
Pa.....Richard Byrne  
Dave.....Donald Bain  
Benny.....Frankie Roberson



## SHAM

### Cast

Thief.....Charles Hield  
Charles.....Bruce Coryell  
Clara.....Pat Dickey  
Reporter.....Douglas Hagan



## SUGAR AND SPICE

### Cast

Mr. Jones.....Robert Rannie  
Mrs. Jones.....Suzi Stapleton  
Jane.....Betty Allison  
Susan.....Delores Watson  
Chump Edwards.....Warren Ballew



## WHICH IS THE WAY TO BOSTON

### Cast

John Harvey.....Jerry Sherman  
Martha Harvey.....Alice Eastwood  
Chris Harvey.....Richard Willoughby  
Mary Harvey.....Darlene Votova

# PLAYS

The annual One Act Play contest was held February 8 and 9, 1951, in the William Chrisman High School auditorium. Dr. Newfield, chairman of the Dramatics Department, the University of Kansas City, was the judge.

The plays, "Special Guest" and "Last Flight Over," won "excellent" ratings. "Special Guest" was designated by Dr. Newfield to be taken to the district and the state contests. "Which is the Way to Boston?" was awarded a superior rating, while "Sham", "Sugar and Spice," "Lost Victory," and "Marriage Proposal" received ratings of good.

This year Kenneth Curtis was chosen the number one actor. Richard Byrne received second place, and Donald Bain, third place. Charles Hield and Frankie Roberson were given honorable mention.

Cora Brown was rated best actress, while second place was earned by Alice Eastwood. Jacquelynne Campbell was awarded third place. Honorable mention was given to Dorothy Ferguson and Kaye Siegfried.

Both nights the audience was entertained between plays with a variety of musical numbers. Iris Miller, Joan Talcott and Gary Jageman performed vocal and instrumental numbers. Mrs. Craig Siegfried, Kaye Siegfried and John Salisbury played several piano selections between acts. Ensembles from the band and orchestra furnished numbers for both performances.

Mrs. Mary Foster Williams, A. B. Spears, and William Weber were the faculty members in charge of the contest.

## MARRIAGE PROPOSAL

### Cast

Stepan Tschoukov...Adrian Carl  
Natalia Stepanova....Ann Dennis  
Ivan Lomov.....Bruce Logeman



## SPECIAL GUEST

### Cast

Edward Andrews.....K. Curtis  
Nora Andrews.....Jacquelynne Campbell  
Robert Norton.....Tom Westwood  
Elaine Madison.....Janet Wheaton  
John Andrews.....Jim Andrew



## LOST VICTORY

### Cast

Agatha Van Dorm.....Cora Lou Brown  
Annie.....Dorothy Ferguson  
Cordelia Van Dorm.....Viola Velt  
Paula Vincent.....Nancy Reich  
Cynthia Van Dorm.....Louise Wilkie



## WINNING CASTS AND ACTORS

Sharon Diamond, Frankie Roberson, Cora Lou Brown, Alice Eastwood, Kaye Siegfried, Donald Bain, Richard Byrne, Kenneth Curtis, Tom Westwood, Jim Andrew, Janet Wheaton, Jacquelynne Campbell, Dorothy Ferguson, Charles Hield.

# Reserve Officers Training Corps



STAFF OF MILITARY SCIENCE  
AND TACTICS DEPARTMENTS

M/Sgt. William H. Dickson, Major James L. Swoford, S.F.C. David E. Garner Jr.



BATTALION STAFF

Cadet Capt. Jerry Dean, Cadet Capt. Robert Rannie, Cadet Major Edward Moore, Cadet Lt. Col. Charles Glass.

The R.O.T.C. Program was established at William Chrisman in 1935, and since that year the corps has not failed to receive the highest rating given by the army. This is largely due to the excellent instructors that have been assigned to our school.

The R.O.T.C. course offers three years of instruction. The first two years the cadets learn about such things as drill, map reading, first aid, and weapons. The third year cadets are given further instructions in the things they studied during their first two years and such extra courses as small-unit tactics, military history, and methods of instruction.

The essential purpose of R.O.T.C. is to provide basic training that can be used should the cadet consider a military career. It also lays a

firm foundation for good citizenship by teaching the principles of leadership, respect for authority, and habits of precision, courtesy, and correct deportment.

The students best portraying these qualities along with scholastic achievement are the ones selected for advancement to a higher rank.

The R.O.T.C. Department sponsors a formal ball during March of each year. This occasion is definitely one of the highlights of the year. It is held in Memorial Hall because none of the school rooms could hold this big affair. A good dance band is secured, punch is made, and a drill platoon is selected, using the best cadets in the corps.

Six of the best looking senior girls elected by the cadets in the corps are their battalion sponsors and company sponsors. These girls are given an honorary rank by the commander of the unit of which they are the sponsor.

Another important part of R.O.T.C. is the rifle shooting. This has been developed among the cadets chiefly by the National Rifle Association.

This Club is under the leadership of Sgt./1st Class David E. Garner, who instructs the boys in firing on the school rifle range. The purpose of this club is to help the cadets to learn the importance of handling a rifle correctly and learning to shoot one with some amount of proficiency. For those who can shoot well enough, there are medals that are awarded along with a diploma. This encourages a competitive spirit among the cadets.

The Rifle Team has played in fourteen shoulder-to-shoulder matches this year, winning all of them except the first, which they lost to Southwest by one point. This year there are five seniors and five juniors on the team. These juniors will form the backbone for the team next year. The Rifle team is directed by Master Sgt. William H. Dickson.



COMPANY COMMANDERS

Cadet Capt. Wayne Custead, Cadet Capt. Charles Hield, Cadet Capt. John Borron, Cadet Capt. Tom Westwood.





**BOTTOM ROW:** Cadet 1st Lt. Wesley Peterson, Cadet Major Edward Moore, Cadet 1st Lt. Delmar Hazelrigg, Cadet 2nd Lt. Louis Braley, Cadet Capt. Jerry Dean, Cadet 2nd Lt. Royce Smithson, Cadet 1st Lt. Roger Dillee. **SECOND ROW:** Cadet Capt. Tom Westwood, Cadet 1st Lt. Warren Wagner, Cadet Capt. John Borron, Cadet 2nd Lt. Junius Stewart, Cadet Capt. Charles Hield, Cadet 2nd Lt. Clayton McFarland, Cadet Lt. Col. Charles Glass, Cadet 2nd Lt. Tommy Brown, Cadet Capt. Robert Rannie, Cadet Capt. Wayne Custead.

## Cadet Officers and Rifle Team



**BOTTOM ROW:** Cadet Sgt. Kenneth Archer, Cadet Sgt. David Freeman, Cadet Cpl. Richard Hulse, Cadet Cpl. Wayne Bruder. **TOP ROW:** Cadet Lt. Royce Smithson, Cadet Lt. Col. Charles Glass, Cadet Capt. John Borron, Cadet 1st Sgt. John Boyd, Cadet Lt. Louis Braley.



COMPANY A  
1st Platoon

Platoon Leader, 2nd Lt. Delmar Hazelrigg; Guidon, Vernon Darling. FRONT ROW: Donald Ryhan, Richard Byrne, Bob Vinyard, Lee Holman, James Stockton, Howard Foland, Junior Jennings, Gene Anson, Robert Shine, Richard Hulse. SECOND ROW: Larry Wiley, Robert Grove, John Butts, Page Forsee, Bob Kalthoff, Elvin McEvers, Ronald Mills, Joe Walters, Darrell Bolt. THIRD ROW: Lester Clark, Ronald Mustain, Sherman Beacher, Bill High, Eddie Hempy, Clyde Powell, Jack Johnson, Richard Chandler.



COMPANY A  
2nd Platoon

Platoon Leader, 2nd Lt. Junius Stewart; Guidon Vernon Darling. FRONT ROW: Bill Allega, Roger Pointer, Glen Helverson, Jimmie Braden, Donald Curd, Charles Leamon, Gene Tissue, Gerald Edwards, Bobby Flick. SECOND ROW: Gary Snow, Gene Thomas, Robert Kline, Thomas Munsterman, Bobby Dryer, Casper Shoales, Henry Scherer. THIRD ROW: Jimmie Brand, Sammy Chappelow, Edwin Thompson, Noel Ewing, Harry Cogan, George Jennings, Douglas Jones.



COMPANY B  
1st Platoon

Platoon Leader, 2nd Lt. Royce Smithson; Guidon, Rex Boos. FRONT ROW: Edward Johnson, David Freeman, Carroll Olsen, Lyle Swartz, Terry Pritchett, John Sinclair, Ronald Eiman, Rayburn Baker, Bruce Coryell, Robert Elgin. SECOND ROW: James Dexter, Bill Burgess, Fred Miles, Roy Starcher, Donald Ploeger, Sherman Horsley, Jack LaRue, David Keeney, Marion Kennon. THIRD ROW: Wesley Burns, Dick Perkins, Alexander Smith, Bill McBride, Donald Gibson, Tommy Armstrong, Donald Pleacher, Bill Thomas, Robert Hedrick, Carl Roseman.



COMPANY B  
2nd Platoon

Platoon Leader, 1st Lt. Roger Dillee; Guidon, Rex Boos. FRONT ROW: John Pennington, Lawrence Pederson, Frand Church, Joe Dodson, Russell Allen, Monte Kahler, Robert Moore, Dean Austin, Wayne Bruder, James Miller. SECOND ROW: Tom Freeman, Robert Edson, Jack Buchan, Carroll Day, David Baker, Stanley Poncelet, Herbert Bultemeier, Robert Knotts. THIRD ROW: Tom Edmunds, Tommy Siegfried, Kenneth Wagner, Douglas Hagan, Eddie McLees, John Reynolds, Billy Barnard, George Murphy, Jack Wear.

COMPANY C  
1st Platoon



Platoon Leader, 2nd Lt. Tommy Brown; Guidon, Morton Routon. FRONT ROW: Clifford Hatch, James Prichard, Delbert Casebolt, Raymond Latham, Jack Hamm, Conrad Finzol, Roger Reynolds, Joe Cocklin, Frank Roberson. SECOND ROW: Jerry Cadwell, Joe Lillywhite, Jimmie Sloan, John Laughlin, David Handley, George Shine, David Horn, David Winters. THIRD ROW: Kenneth Archer, John Robertson, Robert Yeager, Golden Howery, Leonard Lemka, Mike Niflis, Charles Fickle, Bill Gibson, Jerry McKenzie.



COMPANY C  
2nd Platoon

Platoon Leader, 2nd Lt. Donald Latcham; Guidon, Morton Routon. FRONT ROW: Philip Gregory, Gene Anderson, Toby Turnbow, Richard Castle, David Specht, Jim Ewing, Richard Wagge, Robert Chapman, Eugene Kettner, Russell Etzenhouser, Bill Casey. SECOND ROW: Corky Rupe, Kenneth Moffitt, James Kinne, Richard Parish, James McCollum, Martin White, Victor Cooper, David Rushton, Larry Munger, Kenneth Beals. THIRD ROW: Charles Cavanah, Russell White, Roger Redford, Dean Ferguson, David Schwensen, James Maness, Bill Winters, Wayne Cooper.



COMPANY D  
1st Platoon

Platoon Leader, 1st Lt. Wesley Peterson; Guidon, Jack Prock. FRONT ROW: John Terryberry, Richard Baird, Merele Amos, Russell Patterson, Bill West, Richard Coulter, Stanley Gage, Myron Andes. SECOND ROW: Donald Cannon, Charles McCorkle, Richard Smith, Jerry Lawler, Tommy Oldham, Jack Bartlett, Bill Barr, Jerry Johnson. THIRD ROW: David Clark, Lloyd Swan, Melvin Crenshaw, Paul Andrew, Stewart Myers, George Shultz, Leonard Skaggs, Jerry Wood.



COMPANY D  
2nd Platoon

Platoon Leader, 1st Lt. Warren Wagner; Guidon, Jack Prock. FRONT ROW: Kenneth Rall, Joe Dick Hightower, Bill Harlan, Stanley Sayer, George Wilson, John Stone, Richard Whitehouse, Kenneth Reed, Edwin Smith. SECOND ROW: Merle Dove, Don Johnson, Dwight Carlile, Ronald Wright, Andy Martinovich, Dale Peffer, James Book, Richard Rice, Warren Ballew. THIRD ROW: Gene Dexter, Howard Shields, Dennis Bright, Edgar Patterson, Reggie Stoner, Frank White, Larry Sampson, Ronald Polfer, John Boyd.

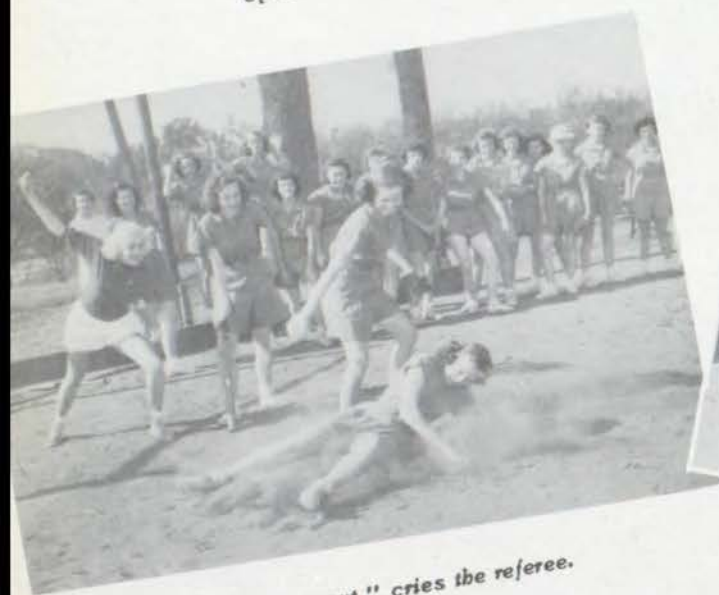
# Brawn Trusters in Action



*Up and over goes the volleyball.*



*1-2-3---biker!*



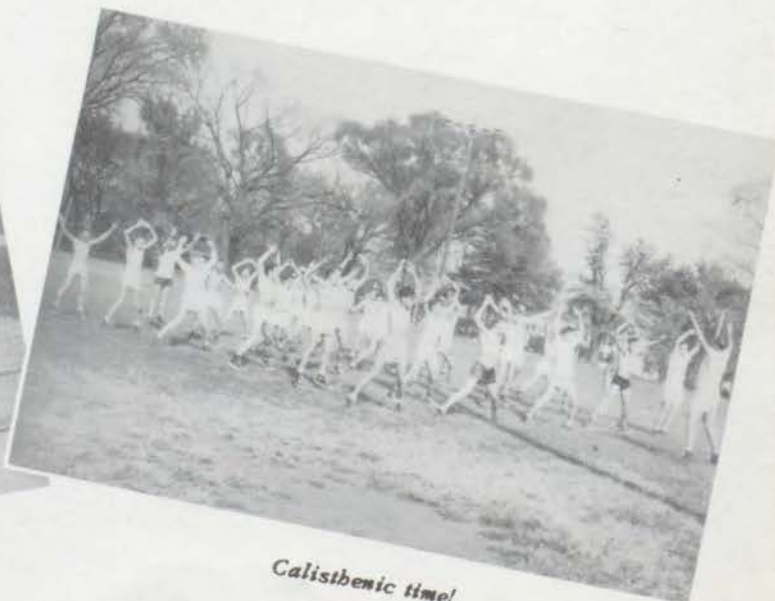
*"You're out," cries the referee.*



*Batter up!*



*How 'bout a game?*



*Calisthenic time!*



### FIRST SEMESTER

FRONT ROW: President, Charles Hield; Secretary, Phyllis McDandel; Parliamentarian, R. L. Coberly. BACK ROW: Treasurer, Tim Rondonomanski; Vice-President, Bill Vardeman.

The Student Council is a governing body of the school representing the wishes of the student body. Officers at present are chosen each semester. By constitutional amendment, officers will serve the entire year in the future, thus giving the administrative body continuity in office.

The work of the council is apportioned among five committees, whose name indicates the chief duties of the group: Finance, Social, Assembly, Elections and Charters, and Honors and Awards.

The council has sponsored Teen Town this year. In the past it has presented the school with certain gifts. The council is at present planning to equip the building with a communications system, which is certainly a very worthy endeavor on the part of the council.



### SECOND SEMESTER

FRONT ROW: Treasurer, Kaye Siegfried; Parliamentarian, Bruce Logeman; Secretary, Margaret Moore. BACK ROW: Vice President, Tom Smith; President, Lloyd Adams.

## Student Council



### STUDENT COUNCIL REPRESENTATIVES

OFFICERS SEATED: Bruce Logeman, Kaye Siegfried, Lloyd Adams, Margaret Moore, Tommy Smith. BOTTOM ROW: Rosa Schoemig, Elaine Danforth, Eleanor Shull, Joyce Lidke, Carol Stewart, Sue Watling, Fritzi Phipps, Eleanor Reynolds, Parealee Bryant, Janis Allen. SECOND ROW: R. L. Coberly, Phyllis McDandel, Erlene Willoughy, Tim Rondonomanski, Grace Gregg, Margaret Kuhlman, Lucinda Sears, Mona Myers, Janet Wheaton, Beverly Wilson, Jim Prichard. THIRD ROW: Norma Cranmer, Jeanne Benson, Betty Allison, Anna Mae Howard, Nancy Barger, Jimmie

Sue Melton, David Fender, JoAnn Overman, Maleta Campbell, Gary Jageman, Clara McCord. FOURTH ROW: Delores Lewis, LaNelle Jean Brunson, Kay Thomas, Lynda Anderson, Mildred Stephenson, David Freeman, Diane Snider, Sharon Blann, Sharon Diamond, Ruth Ann Ziegenhorn, Jerry Sherman, Bill Vardeman. TOP ROW: Grace Clark, Douglas Hagan, Diane Cairns, Richard Willoughby, Lucille McCormick, Shirlee Osborne, Regina Lux, Ruth Elser, Joe Dick Hightower, Donald Cannon, Vernon Johnson, Kenneth Rall, Jack Horn, John Borron.

## Fourth Hour Mixed Chorus



**BOTTOM ROW:** Jeanette Hobbs, Joanne Fitzpatrick, Carol Roach, Joyce Lidke, Delores Henrion, Patsy Ruth Faunce, Shirley Decker, Anna Kennedy, Dorothy Dike, Margaret Netter. **SECOND ROW:** Pat Hart, Bonnie Lusso, Nancy Ostlund, Karlene Stokes, Barbara Van Dyke, Mildred Curtis, Patty Clark, Dorothy Rohrs, Pat Whiting, Betty Rountree, Beverly Bridges, Elaine Ewing, Darlene Gustafson, Darlene Robinson, Parry Harlan, Norma Neill, Beverly Ham, Mary L. Cogan. **THIRD ROW:** Beverly Hattey, Donna Haas, Joyce Briggs, Betty

Lou Miller, Mildred Stephenson, Velma Phillips, Carole Langton, Deloris Lusso, Louise Culbertson, Joan Farley, Dixie Mock, Janet Closson, Dorothy Smith, Catherine Doudney, Eleanor Mann, Jo Ann Carlock, Janice Hatcher. **TOP ROW:** James Maness, Robert Rice, Donald Burkett, George Kuhn, Tommy Brown, Eddie McLees, Pat Foster, Frank Wagner, Ward Badder, Edwin Smith, Robert Comstock, Russell Patterson, Dick Creviston, Kenneth Reed, Charles Stobaugh, Christie Latimer.

## The Lyric Gains in Tempo



**A CAPPELLA CHOIR** **SOPRANO:** Georgia Alton, Nancy Barger, Diane Cairns, Jackie Campbell, Alberta Chrisman, Patsy Craddock, Beverly Crayton, Martha Fye, Carol Giffen, Joyce Higgins, Donna Hurshman, Mary Lund, Marilyn Masten, Patsy Meyer, Iris Miller, Juanita Pugh, Eleanor Shull, Donna Threntham, Maralyn Welch, Donna West, Ruth Ann White. **ALTO:** Virginia Booker, Maleta Campbell, Jane Custead, Jo Ann Ebling, Nancy Flanders, Rosemary Fry, Shirley Harrington, Nancy Lazenby, Donna Rawlins, Eleanor Reynolds, Mar-

## Fifth Hour Mixed Chorus



**BOTTOM ROW:** Betty Vogel, Betty Jean Duxbury, Norma Neas, Valeen Braley, Shirley Flagg, Fairy Heide, Deloris Gibler, Mary Ann Hightower, Joan Pace, Donna Simpson, Mary Chappelow, Carol Preston, Sue Watling, Shirley Jackson, Alice Bittle, Evelyn Stump. **SECOND ROW:** Rosa Schoemig, Marshia Haukenberg, Sadie Lindsey, Marian Orchard, Donna Hart, Patricia Pope, Sarah Ward, Regina Lux, June Atchison, Lois Jean Williamson,

Norma Lytle, Theresa Crass, Jacqueline Hawkins, Peggy Kunkle, Bette Luker, Loretta Fields. **TOP ROW:** Shirley Scherer, Mary Gunzel, Mary Ann Allen, Bob Hostetler, Phil Goodwin, Leo Walker, John Pennington, Samuel Chappelow, Vernon Darling, Dean Heffner, Roger Webb, Robert Kline, Marvin Kennon, John Butts, Frank Potter, Ruth Elser.

## And The Melody Lingers On



lorie Richardson, Sylvia Sallee, Donna Stilwell, Dorothy Story, Elizabeth Williams, Rachel Willoughby. **TENOR:** Jerry Dean, Monte Kahler, Chance Small, William Whenham, Kenneth Witthar, Patsy Bates, Velma Davies, Rosalie Young. **BASS:** Jim Andrew, Walter Beck, Ralph Brewer, Sam Cottingham, James Crawford, Kenneth Curtis, Bill Deam, James Kinne, Dale Mitchell, Robert Phillips, Phillip Ruedy, Jerry Sherman, Lynn Thatcher, Bill Winter.



FIRST VIOLINS: James Andrew (Concert master), Gary Jageman, Joann Chiles, Robert Lewis, Barbara Baird, Dorothy Melton, Wanda Johnstone, Larry Talor, Channing Oakman. SECOND VIOLINS: Russell Fletcher (Principal), Jack Toddy, Patricia Chiles, Pamela Caviness, Rita Knobe, Ruth Clements, Barbara Young, Christina Nagel, Harry Netter, Joyce Baker. VIOLAS: Jimmie Sue Melton, Virginia Turner, Colin Wright. CELLO: Frank Church, Charles Athey, Dwayne Johnstone. BASS VIOLS: Joan Farley,

## Our Musical Score Unfolds



CLARINETS: Shirley Tiberghien, Tommy Freeman, Roberta Dawson, Paralee Bryant, Bob Grabske, Jim Cable, Alberta Jenkins, Florence Taylor, Delores Mae Todd, Mary Lee Hunt, Wanda Fields, Fern Wilson, Pat Butler, Victor Cooper. BASS CLARINET: Fay Kohlman. FLUTES: Charlene Twente, Winola Hart. OBOE: Jerry Cadwell. BASSOON: James Barbour, Richard Clothier. SAXAPHONES: *Soprano*; Alma Griffiths. *Alto*; Darlene Votova, Bill Nichols, Jerry Lawler, Dennis Bright. *Tenor*; Roger Stover, James Stocton. CORNETS: Rayburn Baker, Jimmie Zimmerman, Peggy Coen, Carroll Esry, Roger Baker, Clayton McFarland, Patricia Basher. Jack Prock, Larry Munger. FRENCH HORNS:





Delores Tandey, Celia Fry. CLARINETS: Philip Gregory, Jerry Morris. FLUTES: Charlene Twente, Winola Hart. OBOE: Jerry Cadwell. BASSOON: Jim Barbour, Richard Clothier. FRENCH HORNS: Bill McBride, Richard Baird, Stella Stanger. TROMBONE: Danny Clutter. BASS DRUM: Paul Moyer. TIMPANI: Sharon Diamond. SNARE DRUM: Bette Dugger. CORNETS: Peggy Coen, Rayburn Baker, Richard Hulse. DIRECTOR: M. Orville Johnson.

## in Willy's Band and Orchestra



Richard Baird, Bill McBride, Stella Stanger, Bill Harlan. TROMBONES: James Brand, LeRoy Hemon, Ronnie Johnson, Paul Greathouse. BARITONES: David Freeman, Richard Byrne, Charles Rich. BASSES: Clifford Hatch, Paul August, Jerry Clack. BASS DRUM: Richard Parish. SNARE DRUM: Bob Mann, Donald Bartles, Betty Dugger. TIMPANI: Joan Talcott. BELLS: Mary Jane Bloyd. MAJORETTES: Diann Fisher, June Crenshaw, Karlene Fulton, Nancy Prichard, Beverly Rinehart, Betty Rinehart. DIRECTOR: M. Orville Johnson.



Dick Creviston, Margaret McKevit, Regina Lux, Virginia Russell, Shirley Kofford, Barbara Van Dyke.

## GLEAM STAFFS

The work of publishing *The Gleam* is divided into four parts and apportioned among four staffs each with a faculty sponsor: Design and Layout, Literary, Business and Advertising, and Typing. The work of the first mentioned begins in September, and concludes when the last page had been sent to the publisher. This staff chooses the color and theme for the current issue, plans the arrangement and content of the various sections of the book, superintends the taking of pictures, and assembles the copy prepared by the other staffs. Much of the work of this staff must be completed before the work of the other staffs can begin. Probably upon this group rests the chief responsibility for the success of the yearbook.

The financial success of the book depends upon the members of the Business and Advertising Staff. This group of upperclassmen conducts the sale of *The Gleam*, the advance sale occurring early in the school year,

the next, later in the semester when the number of books to be printed has been determined. It also solicits from various firms in Independence and Kansas City the advertising which appears in the year book.

The Literary Staff writes the copy which accompanies the various pictures. This staff is, to an extent, a continuous body, as it is composed of sophomores, who acquire some experience in the preparation of the articles during the first year, and juniors and seniors who have served in previous years. The quality of their work contributes to the interest and historic value of the yearbook.

The Typing Staff consists of typing students who are enrolled in the Secretarial Practice class. They are chosen for their proficiency with the typewriter and for their dependability. They type the copy in its final form for the printer. To the neatness, promptness, and accuracy of this staff belongs much of the credit for a good yearbook.



LITERARY STAFF FOR GLEAM

BOTTOM ROW: Carole Langton, Susie Vaughan, Viola Velt, Regina Lux. SECOND ROW: Louise Wilkie, Betty Ross, Carole Porter, Grace Gregg. TOP ROW: Phil Gregory, Louise Hurlbut, Sharon Diamond, Valeen Braley, Miss Riller.

BUSINESS STAFF FOR GLEAM

BOTTOM ROW: Bruce Logeman, Ruth Ann Ziegenhorn, Mary Jane Simpson, Janis Williams, Shirley O'Neal, Bob Johnson, Carole Langton, Donald Cannon. BACK ROW: Miss Clement, Joyce Lidke, Barbara Van Dyke, Kaye Siegfried, Martha Connor, Patty Wood, Margaret Kuhlman, Cora Lou Brown, Isabel Bailey.



TYPING STAFF FOR GLEAM

FRONT ROW: Dora Jane Adams, Sue Watling, Camille McDonald, Miss Hord. BACK ROW: Joan Farley, Jacqueline Hagan, Barbara Bryant.



Alice Eastwood, Regina Lux, Alberta Chrisman, Barbara Van Dyke, Lucille McCormick, Kaye Siegfried, Elizabeth Williams, Barbara Maynard, Diann Fisher, Viola Velt, Margaret Moore, Sue Watling.

## ENVOY STAFF

This year marks the thirtieth anniversary of the publication of the *Envoy*, William Chrisman's school paper, which is ably directed by Miss Sarah Ellen Campbell.

The staff of the *Envoy* is the senior publications class. In order to be eligible for this class, students must have at least an M plus average in English. Also added to the requirements are the qualities of interest, tact, dependability, and creativeness.

In previous years the senior publications class has been divided into two groups, one to work on the *Gleam*, the other on the *Envoy*. Much the same plan has been followed this year, except that a class of juniors was enrolled in a journalism course, the purpose of which is to teach the principles of journalism and give specific training for work on the school paper and the year book.

The *Envoy* staff have done their best to encourage school spirit. They have endeavored to fill the *Envoy's* pages with interest, news, information, and entertainment. Also, the aim of paper has been to mirror the varied aspects of student life--the happenings, opin-

ions, attitudes, and feelings. The *Envoy* is a record of high school days.

Because of the change in the personnel of the publications class due to the creation of the class in journalism, the *Envoy* staff was unusually small this year. Every member was given plenty of responsibility. The small number of staff members caused the editors to keep their position for the entire year.

They were as follows: editor-in-chief, Kaye Siegfried; associate-editor, Elizabeth Williams; Page editors: one, Margaret Moore; two, Lucille McCormick; three, Viola Velt; and four, Alice Eastwood. Other staff members for the entire year were business manager, Diann Fisher; subscription manager, Lucille McCormick; advertising manager, Barbara Van Dyke; Typists: Shirley Kofford, Sue Watling, Lucille McCormick, Viola Velt, and Margaret McKevit. Fortunately the staff gained assistant editors at the second semester. They were: page one, Sue Watling; two, Alberta Chrisman; three, Barbara Maynard; and four, Kenneth Curtis.

# Junior Play ... My Sister Eileen

"My Sister Eileen", a comedy by Joseph A. Fields and Jerome Chodorov, was presented December 15 and 16. A New York basement apartment is the setting for the activities in which two sisters, aspiring young writer Ruth and stage struck teen-ager Eileen, engage. During the month which the action of the play covers, the quiet of the apartment is shattered by the continual blasting for a new subway and the girl's privacy invaded by a steady procession of ill-assorted visitors: the landlord, the handyman, a Cossack carrying the inebriate figure of a former tenant, and finally six future admirals from Brazil.

The girls' hopes of success dwindle hardly less rapidly than their savings as the days go by. Ruth's stories find no publisher; Eileen's histrionic talents no producer. The girls are forced to take whatever temporary employment they can find. Even then, there is little money for groceries.

Finally their father comes to take the girls home. Discouraged, the girls begin packing, but change their plans suddenly when Ruth finds steady employment. The play closes on the staccato note of an electric drill. Work on the subway has been resumed.



Margaret Kuhlman and Shirlee Osborne are frightened by the two window peepers, Jim Brand and Donald Cannon.



Richard Byrne meets Sam Cottingham, special friend, of Shirlee and Margaret.

## CAST

Mr. Appopolus	Richard Byrne
Ruth Sherwood	Shirlee Osborne
Eileen Sherwood	Margaret Kuhlman
Jensen	Steve Johnson
Lonigan	Larry Munger
The Wreck	Charles Rich
Mr. Fletcher	Carlton Milby
Two Kids	Bill Thomas
	Ronnie Burns
Helen Wade	Diane Snyder
Frank Lippencott	Richard Chandler
Chic Clark	Bruce Coryell
Cossack	Kenneth Archer
Violet Shelton	Patty Wood
Mrs. Wade	Marilyn Powell
Robert Baker	Sam Cottingham
Two Men	Jimmy Brand
	Donald Cannon
Six Future Admirals	David Freeman
	Jimmy Brand
	Kenneth Archer
	David Keeney
	Jerry Wood
	Oren Stephens
	Jim Prichard
	Ronald Mustain
Walter Sherwood	Louise Wilkie
Strawberry Vendor	Kenneth Rall
A Prospective Tenant	A. B. Spears
The Consul	
Director	

# Speech Play... Blithe Spirit



"Blithe Spirit", by Noel Coward, presents a novel version of the eternal triangle in the characters of a young novelist, Charles, his second wife, Ruth, and the spirit of his first wife, Elvira. Unaware of any complications, Charles invites a medium to his home for a seance, in order to obtain material for his book. The sprightly Elvira arrives from the spirit world to goad the second wife into exasperation, anger, and jealousy. Elvira's plans to take Charles with her to the spirit world go amiss when an auto accident takes Ruth's life instead. Charles then manages a hilarious riddance of the two blithe spirits.

Cora Lou Brown, Charles Hield, Tom Westwood, Grace Twente, Shirlee Osborne, Barbara Strawhacker, Robert Rannie.

## CAST

Edith (a maid)	Grace Twente
Ruth	Shirlee Osborne
Charles	Charles Hield
Dr. Bradman	Robert Rannie
Mrs. Bradman	Barbara Strawhacker
Mr. Arcati	Tom Westwood
Elvira	Cora Lou Brown
Director	Miss M. Meredith



Shirlee Osborne, Grace Twente, Charles Hield, Tom Westwood, Cora Lou Brown, Barbara Strawhacker, Robert Rannie.

# Debate

For several years the debate squad at William Chrisman has been very active and successful in interscholastic tournaments. This year, debaters captured the first place trophy in the tournament at North Kansas City. They also debated in tournaments at Springfield, Missouri; William Jewell in Liberty, Missouri; Topeka, Kansas; Wyandotte in Kansas City, Kansas; Center in Kansas City, Missouri; and Atchison, Kansas. In some of these contests, the competition included schools from as many as three states.

In recent years, Chrisman has had a tournament at home. This year the debates were held December 15 and 16. There were thirty-four teams, representing twenty-two schools, present. Wyandotte, Kansas, won first place and Springfield, Missouri, took home the second place trophy.

In the state tournaments Chrisman debaters have won three firsts in the last five years. They won third place in one of the other years.

The question for debate was "Resolved: That the American people

should reject the Welfare State." The debate class was composed of fourteen people during the year 1950-51. Members of the class were Celia Fry, Delores Tandy, Edward Moore, John Borron, Richard Willoughby, James Brand, Phyllis McDandel, Grace Twente, Cora Brown, Patricia Dickey, Douglas Hagan, Nancy Flanders, Margaret Hall, and David Schwensen. The varsity team was composed of the first four mentioned. The class met during sixth hour the first semester. Second semester debate activities were extra-curricular.

Miss Margaret Meredith is debate coach and speech instructor.



Delores Tandy and Edward Moore upholding the affirmative of the question: Resolved: "That the American People Should Reject the Welfare State" in the same tournament.



John Borron and Celia Fry debating negatively in William Chrisman's fifth annual debate tournament.

*Best of all good wishes to one of my best friends Margaret Meredith*



Standing in front - John Borron. FRONT ROW: Cora Lou Brown, Pat Dickey, Edward Moore, Celia Fry, Delores Tandy. MIDDLE ROW: Phyllis McDandel, Grace Twente, David Schwensen, Jimmy Brand, Douglas Hagan. BACK ROW: Nancy Flanders, Richard Willoughby, Margaret Hall, Miss Meredith.

# *Sports*

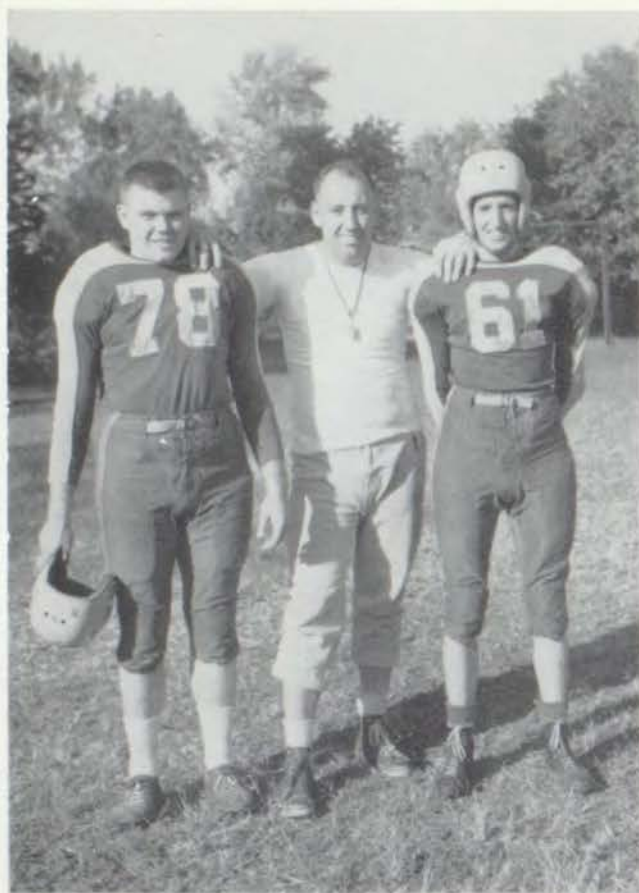


*Basketball*  
*Football*  
*Track*









Lloyd Adams (Co-captain), Coach Grover Redford,  
Howard Tignor (Co-captain).

William Chrisman started its regular football season with a bang this year trouncing the Raytown eleven 21 to 18. The William Chrisman squad was coached through this game and on to the best season Chrisman has had in years by Grover Redford, assisted by Travis Hopkins.

Even in defeat our team showed good sportsmanship and played every game hard to the end. The Bears tied for third in the Pony Express Conference with a two won, two lost, and one tied record. All plays for the Bears were run from the short punt or single wing formation with Hap Adams calling most of the plays.

The outstanding player of the year could be chosen unanimously by the student body, Hap Adams, who has had one of his best seasons on the gridiron. The team will find it a hard job to replace Hap next year.

The team won five, lost three, and tied two, for the season. This is very remarkable considering that we played the toughest teams to be found in our county.

Homecoming night featured the usual elaborate plans and gaiety. While it was a little windy, otherwise it was a good night for the game. Chrisman played one of the toughest teams in this area, Excelsior Springs, and held them scoreless. As the Bears could not get that much needed touchdown either, the game ended in a zero-zero draw.

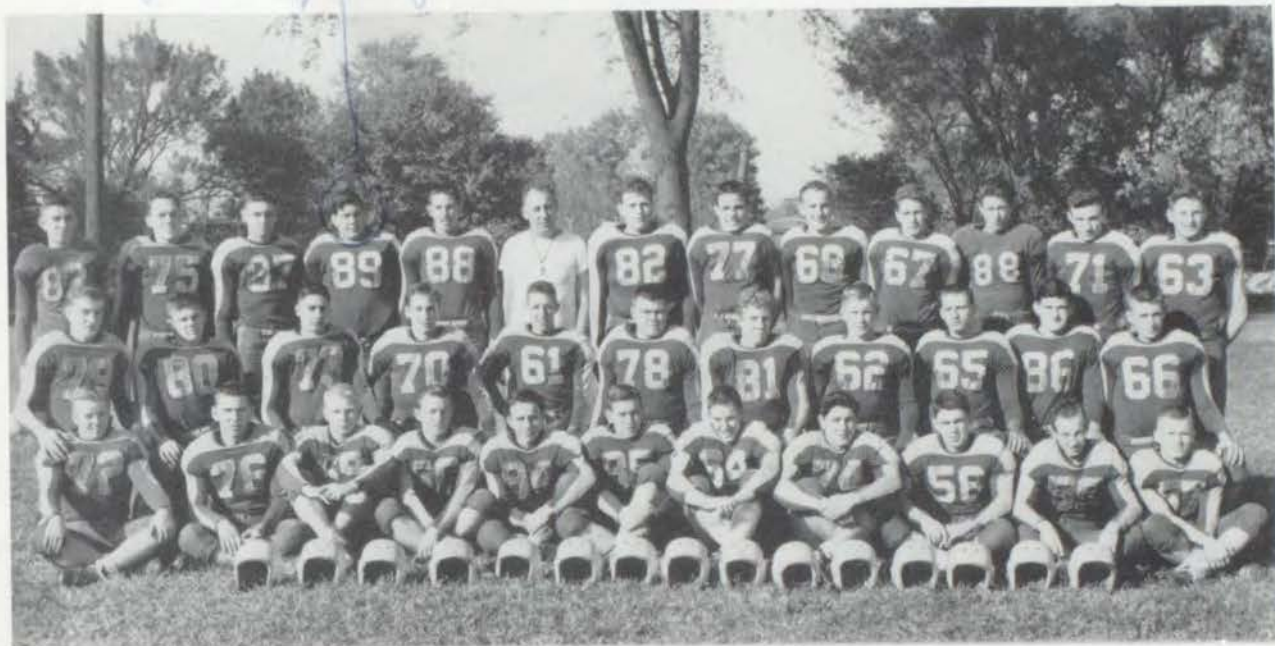
## FOOTBALL



BOTTOM ROW: Charles Harrison, Keith Weddle. TOP ROW: Dick Edson, Bob Vinyard, Bob Flick.

*Lots of sacks to give me full back - Dave Johnson*  
*Heffner*

## Varsity Team



**BOTTOM ROW:** Denver Burkett, Jerry Staniford, Robert Hostettler, Albert Crow, Donald Cordes, Jack Tolliver, Richard Lowell, Darrol Yates, Frank Painter, Donald Burkett, John Pace. **SECOND ROW:** Gene Plowman, James Brestogianis, Leland Faye, Stewart Carson, Howard Tignor, Lloyd Adams, James Mallott, Morris McQuinn,

Harold Smith, Ronald Bartlett, James Whetstone. **TOP ROW:** Jay McAhan, Dale Griessel, Munro Ransdell, Dean Heffner, Bill Smith, Coach Redford, Robert Elgin, Vernon Hazelrigg, Don Wolfenbarger, Bill Thilking, Tom Caviness, Vaughn Evans, Conrad Ream.

## Second Team



**BOTTOM ROW:** Ronald Burns, Birl Ewing, Tommy Penticuff, Carl Cogan, Jimmie Riley, Bob Warren, Freddie Fenson, Joe Ceballas. **SECOND ROW:** Bill O. Smith, Richmond Anderson, Ralph

Brewer, Steve Larsen, Kenneth Dyer, Bob Speaks, Daniel Green. **TOP ROW:** Bill Heather, Vernon Darling, Tom Siegfried, Steve Johnson, Sam Cottingham, Leland Scott, Charles Rich, David Fender.



DARROL YATES  
Right Guard



VERNON HAZELRIGG  
Left Guard



STEWART CARSON  
Right Guard



MORRIS MCQUINN  
Left Half



MUNRO RANSELL  
Blocking Back



HOWARD TIGNOR  
Right Half



FRANK PAINTER  
Blocking Back



BOB HOSTETLER  
Left Guard



(BIG) BILL SMITH  
Left Tackle



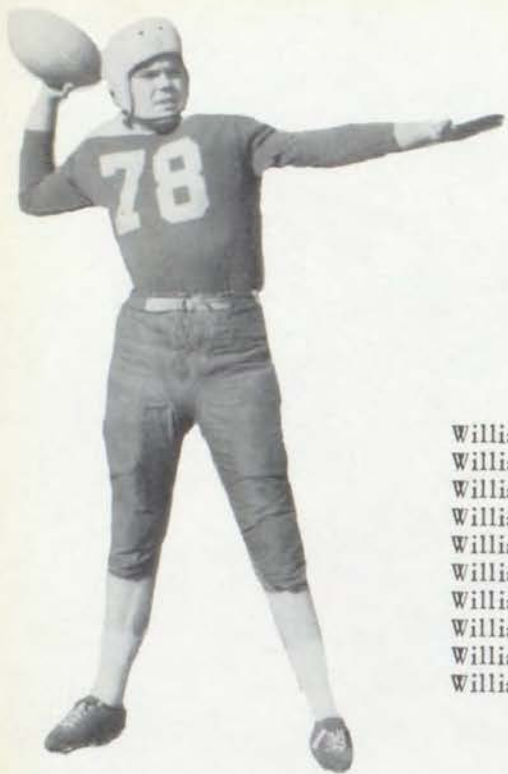
WILLIAM THILKING  
Right End



VAUGHN EVANS  
Left End



JIM WHETSTONE  
Right End



LLOYD ADAMS  
Fullback

## Football Scoreboard

William Chrisman...21	Raytown.....18
William Chrisman...20	Paseo.....12
William Chrisman...14	Benton..... 7
William Chrisman...26	Northtown..... 0
William Chrisman... 0	ExcelsiorSpgs 0
William Chrisman...13	Lafayette..... 37
William Chrisman... 6	Central..... 39
William Chrisman...13	Pem Day..... 7
William Chrisman...13	Wentworth..... 13
William Chrisman... 0	Northeast..... 28



DON WOLFENBARGER  
Left End



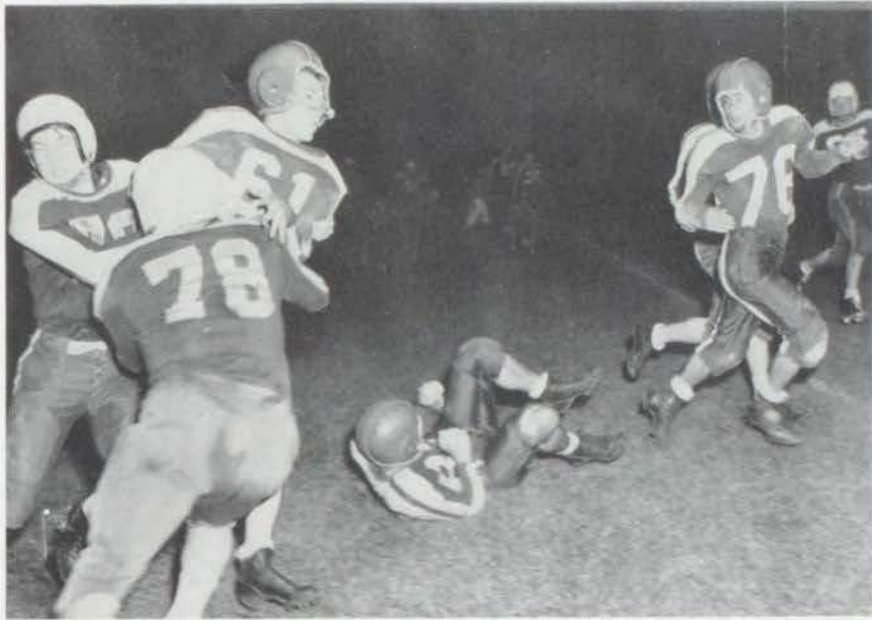
DENVER BURKETT  
Fullback



JAMES MALOTT  
Right Tackle



HAROLD SMITH  
Center



*They have him trapped.*

## Action!



*Hazelrigg and Smith go in for the kill.*



*Adams skirts the end.*

# HOMECOMING



*Spirits were high at the Pep Rally.*

## HOMECOMING

Seen at the pep rally and game were Chrisman's homecoming queen and attendants. Every year at Chrisman the homecoming is an outstanding event. The girls which were elected by the team are as follows: Meleta Campbell, Queen, Alberta Chrisman, and Phyllis McDandel, senior attendants; Barbara Zimmerman and Mary Louise Malott, junior attendants.



Barbara Zimmerman, Junior Attendant; Alberta Queen; Phyllis McDandel, Senior Attendant; Mary Chrisman, Senior Attendant; Maleta Campbell, Louise Mallott, Junior Attendant.



# BASKETBALL

This year Willy Chrisman can be proud of his Basketball team. They have shown an outstanding season by winning first place in the William Jewell Tournament, and second place in the Ruskin Tournament; sharing first place in the Pony Express Conference with St. Joseph Central; and placing second in the Regional Tournament. The varsity team ended the season with a total of 25 wins and 4 losses. This was accomplished only through the hard work of Coach Travis V. Hopkins and the Bruin cagers.

Although several members of the varsity team are graduating, many of Chrisman's experienced lettermen will return next year. Those graduating are: R. L. Coberly, Gary Bergen, Lloyd Adams, Fred Potter, Clifford Clark, and Jim Whetstone. The members of the first team returning next year are: Wayne Davidson, Shelby Brightwell, Jim Fronkier, Howard Tignor, Bill Thilking and Harold McElroy.

This year's season was not only outstanding but also exciting. In many of the games the scores were close, and the boys had to fight hard to come out on top. Every member is an essential part of a team, and it would be hard to single out one member as the best; however due credit should be given to those boys who made those all important last baskets which won several games for Chrisman.

Among the games which were dropped by the players, only one was lost by more than 4 points. All in all this shows that the team had a very successful season. The Bears completed a season of 25 wins and 4 losses which is a better average than the Chrisman Cagers have had in many years.



Coach Travis Hopkins



Basketball Managers—James Riley, Charles Rich, Jimmy Jackson.





SHELBY BRIGHTWELL  
Guard

*Some of the  
sweetest girls playing  
Basketball*



GARY BERGEN  
Center

*The best of luck to  
my small buddies  
I would like to wish you  
happiness.*



JIMMY FRONKIER  
Forward



JIM WHETSTONE  
Guard



HAROLD McELROY  
Forward



WAYNE DAVIDSON  
Forward



CLIFFORD CLARK  
Guard



R. L. COBERLY  
Center



BILL THILKING  
Forward



HOWARD TIGNOR  
Forward



LLOYD ADAMS  
Guard



FRED POTTER  
Guard



### VARSITY BASKETBALL

Clifford Clark, Jim Fronkier, Howard Tignor, Lloyd Adams, Jim Whetstone, Shelby Brightwell, Fred Potter, Bill Thilking, Wayne Davidson, Harold McElroy, R. L. Coberly, Gary Bergen.

## Basketball Scoreboard

### WILLIAM JEWELL TOURNAMENT

William Chrisman.....37	Center.....20
William Chrisman.....59	Odessa.....22
William Chrisman.....33	St. Joseph Benton.....25
William Chrisman.....47	Kearney High.....45

### RUSKIN TOURNAMENT

William Chrisman.....17	Ruskin.....15
William Chrisman.....33	Raytown.....26
William Chrisman.....17	Excelsior.....18
William Chrisman.....42	East.....40
William Chrisman.....36	Excelsior.....24
William Chrisman.....36	St. Joseph Lafayette.....29
William Chrisman.....44	St. Joseph Benton.....23
William Chrisman.....36	St. Joseph Central.....40
William Chrisman.....33	North Kansas City.....32
William Chrisman.....38	Raytown.....32
William Chrisman.....26	North Kansas City.....28

William Chrisman.....59	Wentworth.....42
William Chrisman.....43	Raytown.....26
William Chrisman.....53	St. Joseph Lafayette.....31
William Chrisman.....56	Wentworth.....31
William Chrisman.....28	St. Joseph Benton.....16
William Chrisman.....44	Liberty.....27
William Chrisman.....72	Smithville.....28
William Chrisman.....76	Oak Grove.....25
William Chrisman.....59	Manual.....26
William Chrisman.....52	St. Joseph Central.....51
William Chrisman.....78	Grain Valley.....25

### REGIONAL TOURNAMENT

William Chrisman.....45	Southwest.....30
William Chrisman.....41	North Kansas City.....32
William Chrisman.....39	East.....52

### SECOND TEAM BASKETBALL

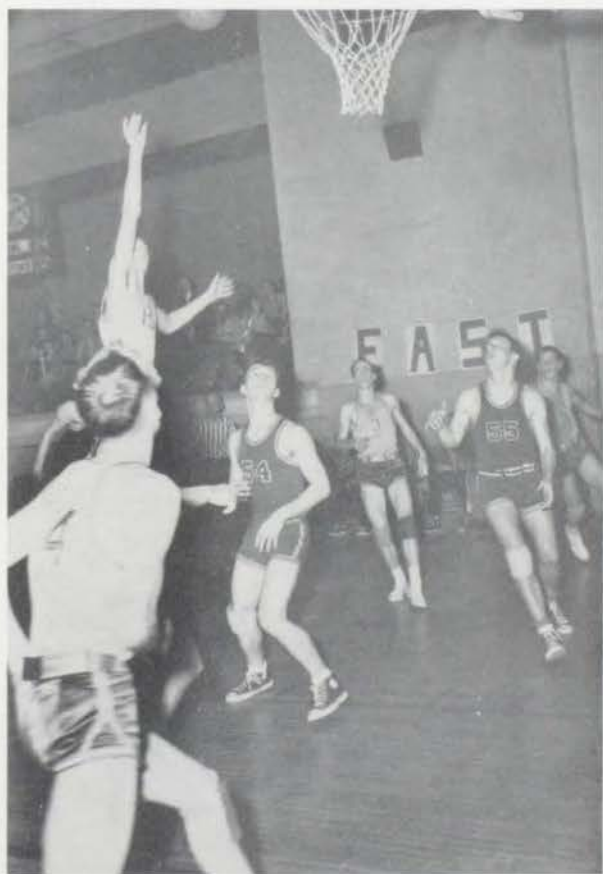
FRONT ROW: Tommy Siegfried, Adrian Carl, David Fender, (Little) Bill Smith, Jerry Chadwick, (Middle) Bill Smith, Clifford King, Keith Weddle. TOP ROW: Tom Graham, Vernon Hazelrigg, (Big) Bill Smith, Ollie Ragan, Jerry Jones, Gene Plowman, Fred Garrison, Kent Mueller.





*A victorious crew*

## Action



*Bergen goes high.*



*McElroy sinks two.*

# Track

Vaughn Evans and Morris Mc-Quinn clear the hurdles.

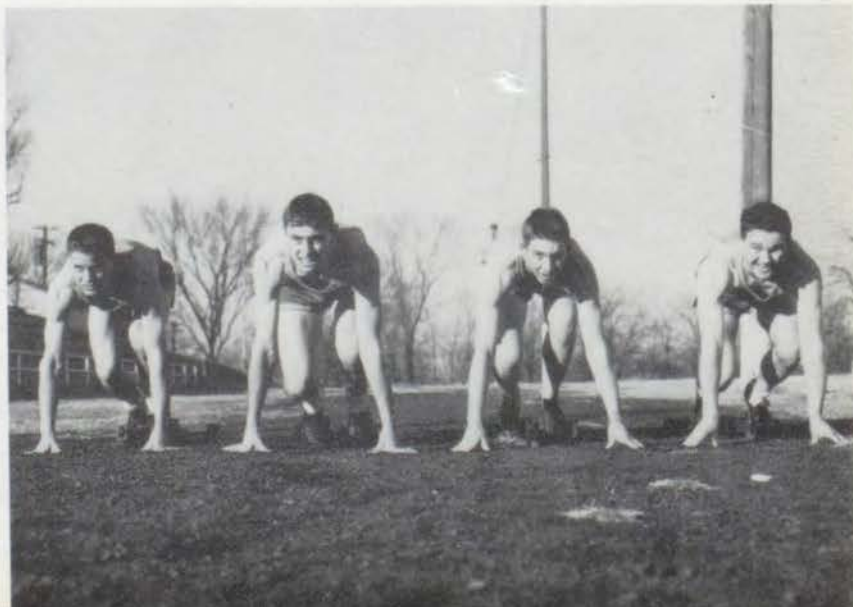


*Best jump  
to a hurdle  
Vaughn Evans*



Distance runners—Bill Deam, Bob Speaks, Bob Williams, and Don Burkett—set the pace.

Dash men—Russell D'Anna, Munro Ransdell, Dick Lowell, and Arthur Stowell—are on their mark.





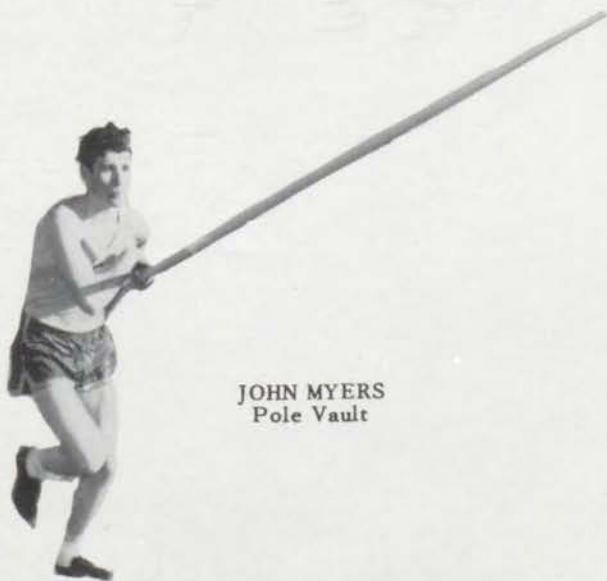
STEVE LARSON  
Distance Runner and Pole Vault



DARROL YATES  
Shot Put



TOM CAVINESS  
Discus



JOHN MYERS  
Pole Vault



TRACK MANAGERS: Ronald Casselman, Lee Holman, James Schuler, Louis Braley.

C.C. I you're really  
well person.  
I'm always  
admired and  
respected for  
I'm well friend  
for you  
admission. Best  
wishes always  
for the future  
Be good!!  
Alice  
Estwood

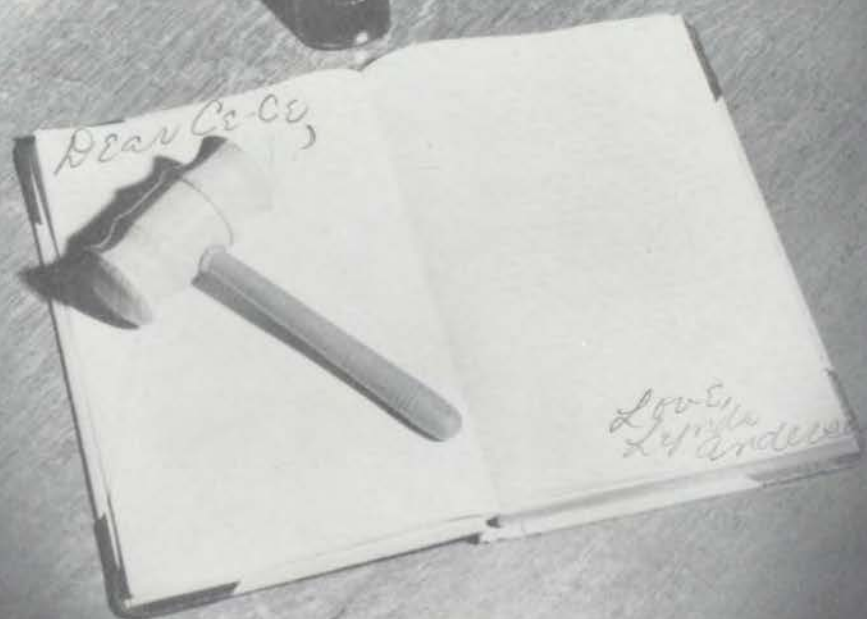


Dear friends,  
I am glad to  
hear of your  
success and  
hope you will  
continue to  
improve and  
become a  
valuable  
member of  
our community.  
I am sure you  
will be a  
great asset  
to our school  
and our  
country.

*Clubs and  
Societies*



Dear "C.C."  
We really love  
you. We are  
sure you know  
Giddy love



Dear C.C.,

Love,  
Linda  
L. Anderson

# National Art Honor Society



OFFICERS SEATED: Louis Braley, Kaye Siegfried. BOTTOM ROW: Louise Wilkie, Faye Dyer, Delores Shadel, Miss Sampson, Jane Ola Curtis, Bette Shoemaker, Mary Jane Simpson. TOP ROW: Kay Thomas, Regina Lux, Charles Thompson, Joe Dick Hightower, Billy Gibson, Bill Friend, Shirley Kofford.

## OFFICERS

### *First Semester*

Louis Braley  
Margaret McKevit  
Kaye Siegfried

President  
Vice-President  
Secretary

### *Second Semester*

Louis Braley  
Margaret McKevit  
Kaye Siegfried

Sponsors: Miss Nell Sampson and Miss Margaret Meredith

The National Art Honor Society is a national organization. This society was chartered in 1937 under the sponsorship of Miss Nell Sampson. The purpose of this society is threefold: gaining appreciation, knowledge, and skill.

Membership in this society bears much distinction. To qualify for membership, the students must be of good character and must have a scholastic rank of at least an "S" average in Art and an "M" average in other subjects. Members must exhibit at least fifteen pieces, using various media, in the annual spring exhibit.

The society enters several art contests each year, one of which is the contest sponsored by Emery, Bird, Thayer and Company of Kansas City. The Society also holds an exhibit each spring.



# National Forensic League



OFFICERS SEATED: Grace Twente, Phyllis McDandel. BOTTOM ROW: Nancy Flanders, Margaret Hall, Delores Tandy, Cora Brown, Bette Moore, Shirlee Campbell. SECOND ROW: Miss Meredith, Jim Brand, Barbara Strawhacker, Celia

Fry, Pat Dickey, Richard Willoughby, David Schwensen. TOP ROW: Edward Moore, Douglas Hagan, Kenneth Curtis, John Borron, Stewart Carson, Tommy Westwood, Donald Cannon.

## OFFICERS

### *First Semester*

Phyllis McDandel  
Ann Weddle  
Grace Twente

President  
Vice-president  
Secretary

### *Second Semester*

Phyllis McDandel  
Ann Weddle  
Grace Twente

Sponsor: Miss Margaret Meredith

The Independence chapter of the National Forensic League, which was organized in 1932, is one of the most active in the nation. The requirement for membership is twenty points which is the equivalent of three wins or first in debate or competitive speech. There are now twenty-four active members in Chrisman. The United States is divided into twenty-five districts, each of which holds an annual speech contest. The first-place individual winners in the districts this year will go to the National Contest, which will be held at Pepperdine College in Los Angeles, California, in June. Chrisman has won the Missouri district tournament for the last seven years.



# National Rifle Association



OFFICERS SEATED: S.F.C. David E. Garner, Jr. Instructor NRA; Cadet Sgt. David Freeman, Treasurer; Cadet Lt. Col. Charles Glass, Commander; Cadet John Borron, Vice-Commander. BOTTOM ROW: Bill Winter, Charles Cavanah, Phil Gregory, Roger Redford, Gene Anderson, Joe Dick Hightower. SECOND ROW: Lester Clark, Clifford Hates, Ronald Mills, Richard Byrne, Carroll Day,

Frank Roberson. THIRD ROW: Melvin Crenshaw, Billy Gibson, Bill Harlan, Bruce Coryell, Donald Rhyan, Stanley Sayers. FOURTH ROW: Alexander Smith, Charles McCorkle, Kenneth Rall, Richard Castle, Mike Niflis, Reggie Stoner. TOP ROW: Wayne Bruder, Jerry Cadwell, Lloyd Swan, Richard Hulse, Jack Prock, Jerry Lawler.



OFFICERS SEATED: S.F.C. David E. Garner Jr. Instructor NRA; Cadet Sgt. David Freeman, Treasurer; Cadet Lt. Col. Charles Glass, Commander; Cadet John Borron, Vice-Commander. BOTTOM ROW: Jerry Dean, Wesley Peterson, Robert Rannie, John Boyd, Clayton McFarland, Louis Braley, James Miller. SECOND ROW: Bill West, Lawrence Pederson, Howard Foland, James

Dexter, Bob Hedrick, Bill Burgess, David Baker. THIRD ROW: James Ewing, Jimmy Sloan, Richard Coulter, Richard Max Rice, James Stockton. FOURTH ROW: Paul Moyer, David Schwensen, Bill Kalthoff, Robert Grove, Glen Helverson. TOP ROW: Harold Gene Anson, Larry Sampson, George Murphy, Rayburn Baker, Monte Kahler, Jim Prichard.

# International Quill & Scroll



OFFICERS SEATED: Kaye Siegfried, Viola Russell, Elizabeth Williams, Barbara Bryant, Carole Langton, Alice Eastwood, Miss Riller. TOP ROW: Phil Gregory, Shirley Kofford, Lucille McCormick, Janis Williams, Shirley O'Neal, Donald Cannon. SECOND ROW: Miss Campbell, Virginia

## OFFICERS

### First Semester

Viola Velt  
Kaye Siegfried  
Regina Lux

President  
Vice-President  
Secretary-Treasurer

### Second Semester

Viola Velt  
Kaye Siegfried  
Regina Lux

Sponsors: Miss Sarah Ellen Campbell and Miss Verda Riller



The Quill and Scroll, an international honorary society of high school journalists, is made up of those who have worked on the *Envoy* staff or the *Gleam* staff. Its purpose is to raise the standards of high school journalism, and to encourage and reward individual achievement in this field. To be eligible, one must be at least a junior in high school, must be in the upper one-third of his class, and must do superior work in journalism. The society presents an assembly program, on which occasion the initiates are awarded their membership pins. All members also receive a subscription to the Quill and Scroll magazine, the official publication of the society.



# National Honor Society



**BOTTOM ROW:** Betty Moore, Mary Chappelow, Rosemary Fry, Mary Organ, Edward Moore, Viola Velt, Lillian Taylor, Ruth Elser, Virginia Russell, Shirley Kofford, Margaret Moore. **SECOND ROW:** Mr. Lefever, Evelyn Stump, Janet Wheaton, Kaye Siegfried, Judy Miller, Helen Fitch, Alice Eastwood, Sharon Spencer, Beverly Simcosky, Joan Jenkins, Dorothy Ferguson, Jo Ann Jones, Joyce Higgins, Carol Collins, Joyce Lidke, Barbara Matthews, Delores Gibler. **THIRD ROW:** James Prichard, Leland Fay, Charles Glass, Thomas

Schafer, William Vardeman, Jerry Sherman, Anna Mae Howard, Patsy Bates, Lucille McCormick, Grace Twente, Mary Lund, Barbara Strawhacker, Phyllis McDandel, Delores Tandy, Kay Oeser, Diane Cairns. **TOP ROW:** Tommy Smith, Douglas Jones, John Borron, Joe Dick Hightower, Donald Cannon, Robert Rannie, Philip Gregory, Kenneth Curtis, Robert Johnson, Richard Byrne, Shirlee Osborne, Celia Fry, Janis Williams, Regina Lix, Elizabeth Williams, Suzi Stapleton, Jerry Dean.

## OFFICERS

### *First Semester*

Edward Moore  
Ruth Elser  
Viola Velt  
Lillian Taylor

President  
Vice-President  
Secretary  
Treasurer

### *Second Semester*

Edward Moore  
Ruth Elser  
Viola Velt  
Lillian Taylor

Sponsor: Mr. Gregory Lefever



Leadership, scholarship, character, and service are the four important requirements up to which the members of the National Honor Society must measure. Being a member of this organization is considered one of the greatest honors available at Chrisman, for only fifteen percent of the seniors in the upper third of their class and five percent of the juniors ranking in the upper tenth of their class are admitted into the club. During the year the club holds weekly noon meetings. The group planned several social events including a progressive dinner. The club also sponsored an assembly. At this impressive gathering new members were initiated and were presented with membership cards and flowers.



# National Thespian Dramatic Honor Society



BOTTOM ROW: Eleanor Shull, Betty Allison, Viola Velt, Janice Dobson, Kaye Siegfried, Nancy Flanders, Betty Theiss, Mrs. Williams. SECOND ROW: Donald Bain, Judy Miller, Barbara Strawhacker, Virginia Russell, Nancy Reich, Carol Stewart, Margaret Kuhlman, Jim Prichard. THIRD

ROW: Jim Andrew, Phyllis McDandel, Suzi Stapleton, Shirley Kofford, Sharon Diamond, Shirlee Osborne, Grace Twente, Ann Dennis. TOP ROW: Tommy Westwood, Jerry Sherman, Bruce Logeman, Kenneth Curtis, Richard Byrne, Charles Hield, Robert Rannie, Louis Braley.

## OFFICERS

### *First Semester*

Charles Hield  
Bruce Logeman  
Virginia Russell  
Tommy Westwood

President  
Vice-President  
Secretary  
Treasurer

### *Second Semester*

Charles Hield  
Bruce Logeman  
Virginia Russell  
Tommy Westwood

Sponsor: Mrs. Mary Foster Williams

A minimum of ten points acquired through various speech activities is required for admittance into the National Thespian Dramatic Honor Society; it is expected that the members continue to earn points after becoming members of the society.

The Thespians hold a one-act play contest and present a three-act play with the Speech Department. The top-rating one-act plays were "Last Flight Over" and "Special Guest." "Special Guest" was chosen to participate in the Warrensburg contest. The top-rating actors were first, Kenneth Curtis; second, Richard Byrne; and third, Donald Bain. The top-rating actresses were first, Cora Lou Brown; second, Alice Eastwood; and third, Jacquelynne Campbell.



# Art Club



OFFICERS SEATED: Joe Dick Hightower, Charles Thompson, Shirley Kofford, Pat Clark, Mary Jane Simpson, Kaye Siegfried. BOTTOM ROW: Dianne Fisher, Jane Ola Curtis, Faye Dyer, Barbara Hall, Judy Hall, Betty Allison, Carol Pickett, Bette Shoemaker. SECOND ROW: Bob Kalthoff, Donna Lee Eads, Dorothy Dickensheets, Diane Snider, Norma Cranmer, Sharlene Bradley, Beverly Wilson, Mids Sampson. TOP ROW: Darlene Faye Robinson, La Nelle Jean Brunson, Fern Himes, Billy Gibson, Virginia Jennings, Regina Lux, Delores Shadel.

## OFFICERS

### *First Semester*

Charles Thompson  
Shirley Kofford  
Margaret McKevit  
Mary Jane Simpson  
Kaye Siegfried

President  
Vice-President  
Secretary  
Treasurer  
Reporter

### *Second Semester*

Kay Thomas  
Joe Dick Hightower  
Shirley Kofford  
Patsy Clark  
Mary Jane Simpson

Sponsor: Miss Nell Sampson

The Art Club is one of the most active clubs in school. Its meetings this year have been held bi-monthly and its activities quite varied. The club serves the school by making posters for numerous events; its chief service project for the community was to make tray favors which the Red Cross distributed to hospitals at Christmas time. Various club members enter the Scholastic regional contest at Emery, Bird, Thayer and Company. They also participate in the all-school display and demonstration which is held in the Memorial Auditorium.

Other activities included a field trip to the Art Institute and to the Nelson Art Gallery, a skating party, this year held at Buckner, and a Halloween party.





# Commercial Club



OFFICERS SEATED: Rosemary Fry, Catherine Doudney, Janet Wheaton, Anna Mae Howard, Joyce Lidke, Jeanne Benson, Mary Jane Simpson. BOTTOM ROW: Emilie Adkins, Winola Hart, Paralee Bryant, Betty Vogel, Mary Chappelow, Joyce Graupner, Evelyn Stump. SECOND ROW:

Miss Myers, Frances Rogers, Georgia Alton, Nancy Bentley, Charlene Ward, Geraldine Cogan, Joyce Ryerson, Miss Page. TOP ROW: Norma Cranmer, Janet Closson, Edith McKinney, Dorothy Hansen, Joann Smith, Carolyn Shakespeare, Norma Mullenax.

## OFFICERS

### First Semester

Anna Mae Howard  
Joyce Lidke  
Janet Wheaton  
Catherine Doudney  
Jeanne Coulter

President  
Vice-President  
Secretary  
Treasurer  
Reporter

### Second Semester

Joyce Lidke  
Jeanne Benson  
Mary Jane Simpson  
Rosemary Fry  
Mary Organ

Sponsors: Miss Thelma Myers and Miss Jessie Page

Membership in the William Chrisman Commercial Club is open to any M-average student who is enrolled in some commercial course, and who receives a two-thirds vote of the members. The club, having this year a membership of approximately thirty-five students, was organized to benefit students who wished to learn more about the demands of business on the future job seeker and more about the ways in which the job seeker can prepare himself for a job. The club sponsors field trips to various business firms in Independence and Kansas City. For recreation the club sponsors at least one party, held at the home of one of the members. The club emblem is the shamrock; the colors, green and white.



# Future Homemakers of America



OFFICERS SEATED: Dorothy Ferguson, Norma Cranmer, Susann Kearnes, Lucille McCormick. BOTTOM ROW: Frances Pickett, Roberta Lanham, Ida Mae Stewart, Barbara Hammond, Billie Jean Parsons. SECOND ROW: Miss Johnson, LaNelle

Jean Brunson, Viola Haynes, Joanne Fitzpatrick, Miss Surbaugh. TOP ROW: Mary Sue Rauh, Rama Wells, Jerry Stillwell, Freddye Fitzgerald, Delores Ethington, Charlene Gregg.

## OFFICERS

### *First Semester*

Lucille McCormick  
Susann Kearnes  
Dorothy Ferguson  
Clara Jane Reed  
Norma Cranmer

President  
Vice-President  
Secretary-Treasurer  
Historian  
Reporter

### *Second Semester*

Lucille McCormick  
Susann Kearnes  
Dorothy Ferguson  
Clara Jane Reed  
Norma Cranmer

Sponsors: Miss Nelvada Surbaugh and Miss Hazel Johnson

The Future Homemakers of America is a national organization offering membership to all girls who are studying methods of cooking and sewing. On the practical side of its program, the club offers opportunities for students to develop their talents in almost everything related to home economics. Members of this club are instructed in making and selecting their own clothes, managing a home, doing interior decorating, and in the planning and preparation of meals. The Future Homemakers may well be considered one of the most profitable clubs at William Chrisman. This organization also provides many social activities. The square dance at Red Top Farm was a favorite this year.



# Future Teachers of America



OFFICERS SEATED: Edrie Lou Smith, Helen Propst, Jo Ann Ebeling, Margaret Moore, Kenneth Curtis, Jo Ann Jones, Barbara Wingate, Kay Thomas, Grace Twente. BOTTOM ROW: Mrs. Brush, Mary Ann McCluhan, Donna Lee Eads, Marilyn Powell, Shirely Owens, Joyce Graupner, Judy Chapman. SECOND ROW: Eva Lee Amer, Louise Hurlbut, Betty Rinehart, Suzi Stapleton, Susann Kearnes, Maralyn Welch, Beverly Rinehart, Diann Fisher. TOP ROW: Mary Lund, Phillip Ruedy, Gene Ray Anderson, Robert Rannie, Dale Griessel, Eloise Whitney, Erlene Willoughby, Carole Gibson.

## OFFICERS

### *First Semester*

Kenneth Curtis  
Margaret Moore  
Jo Ann Ebeling  
Helen Propst  
Edrie Lou Smith

President  
Vice-President  
Secretary  
Treasurer  
Historian

### *Second Semester*

Jo Ann Jones  
Barbara Wingate  
Kay Thomas  
Mary Organ  
Grace Twente

Sponsor: Mrs. Florence Brush

Future Teachers of America is a national organization, sponsored by the National Education Association. The purpose of this organization is to give authentic information to persons interested in some phase of teaching. The emblem is the torch of learning superimposed upon a globe. The William Chrisman chapter was formed two years ago. The club meets every second and fourth Wednesday of each month. Usually some person connected with the field of teaching is invited by the club to speak at its meetings. Each year a one-hundred dollar scholarship is given by the club to some senior student interested in one of the phases of teaching. Money for this scholarship is raised through a candy concession sponsored by the club.



# Library Club



OFFICERS SEATED: Shirley Jackson, Margaret Moore, Donna Trentham, Wanda Plumleigh, Mary Moore, Maralyn Welch. FIRST ROW: Barbara Wingate, Susie Vaughn, Mrs. Piper, Norma Westshal, Jacquelynne Campbell, Velma Phillips, Phyllis Hall, Alice Rose Eldridge.

## OFFICERS

### *First Semester*

Margaret Moore  
Shirley Jackson  
Donna Trentham  
Lillian Taylor

President  
Vice-President  
Secretary  
Reporter

### *Second Semester*

Donna Trentham  
Norma Westphal  
Mary Moore  
Maralyn Welch

Sponsor: Mrs. Mayme Piper

One of the most versatile clubs in the school is the Library Club. The girls have proved that one can mix business with pleasure and succeed. Their business is to take care of the library. The girls, fifteen of them, shelve and check out books, clean and dust the shelves, help find material for dozens of people every day, and still find time to have fun. The club has held a pot-luck supper at the school, a television party at the home of Shirley Jackson, and a Christmas party at the home of Jacquelynne Campbell. The Club was organized in its present form by students sponsored by Miss Lola Wilkin.



# M-Club



OFFICERS FIRST ROW: Delores Gibler, Mary Gunzel, Donna Rawlins, Dorothy Melton. OFFICERS SEATED: Kay Oeser, Mildred Stephenson, Alice Eastwood, Lucille McCormick, Rosemary Fry, Bette Shoemaker. BOTTOM ROW: Faye Dyer, Carol Collins, Patsy Clark, Donna Rogers, Dorothy Dickensheets, Ruth Ann Ziegenhorn, Barbara Hammond, Charlene Andes. SECOND ROW: Ermaleen Crim, Janis Williams, Shirley O'Neal, Virginia

Russell, Jan Miller, Judy Miller, Maleta Campbell, Betty Theiss. THIRD ROW: Betty Lusso, Virginia Davis, Charlene Ward, Jacqueline Walkenhorst, Grace Gregg, Gina Smith, Miss Street. FOURTH ROW: Irene Curtis, Paula Jones, Nancy Reich, Joanne Shelton, Nancy Turner, Barbara Schroeder, Martha Turner. TOP ROW: Barbara Smith, Shirley Flagg, Alberta Douglas, Nancy Bradshaw, Sharon Diamond, Erlene Willoughby.

## OFFICERS

### First Semester

Mary Gunzel  
Dolores Gibler  
Alice Eastwood  
Mildred Stephenson  
Kay Oeser

President  
Vice-President  
Secretary  
Treasurer  
Reporter

### Second Semester

Donna Rawlings  
Dorothy Melton  
Dolores McCormick  
Rosemary Fry  
Bette Shoemaker

Sponsor: Miss Betty Ann Street

The "M" Club is a girls' athletic club whose purpose is to promote good sportsmanship, scholarship, good health, and to create an interest in school athletics and recreational projects.

To become a member of this club the girl must earn 1000 points based on scholarship, health, leadership, sportsmanship, and athletic ability. After making her 1000 points and passing a physical examination, the girl is eligible for her blue "M" which is the Missouri Women's Athletic Letter.

After an additional 1500 points one can earn a "Super M". This year Mildred Stephenson and Ruth Ann Ziegenhorn earned "Super M's". The club colors are blue and gold; the emblem, a blue "M" on a red and white background.



# Pep Club



CHEERLEADERS: Nancy Turner, Jo Ann Overman, Joanne Shelton, Barbara Maynard, Clara McCord. OFFICERS SEATED: Viola Velt, Virginia Davis, Jo Ann Ebeling, Joyce Lidke, Ann Dennis, Jane Morton, Janis Allen, Judy Hall. FIRST ROW: Donna Teague, Barbara Allen, Delores Case, Sue Gibson, Mary Ann Hightower, Shirley Owens, Nelda Ebeling, Darlene Votava, Joan Ransdell, Marjorie Richardson. SECOND ROW: Rachel

## OFFICERS

### First Semester

Jo Ann Ebeling.....President  
 Joyce Lidke.....Vice-president  
 Margaret McKevit.....Secretary  
 Virginia Davis.....Treasurer  
 Viola Velt.....Reporter

Sponsors: Miss Betty Ann Street



The Pep Club was first organized in 1936. This organization was later disbanded and a new club organized in 1948. The club's purpose is to give support to the athletes and encourage good sportsmanship.

The Pep Club, together with the cheerleaders, has worked very hard this year to stimulate good school spirit and to improve the organization. It has worked out new yells and prescribed certain changes in uniform. Blue skirts and gold sweaters, which made up the uniform, are worn on all club-meeting days and at all the games.

If you have plenty of excess pep, an accumulation of points, and an M average, you are eligible to join the club. Sixty points must be earned for admittance.

# Pep Club



Willoughby, Chell Tousley, Shirley McMullen, Joan Holmes, Carole Miller, Eulalie Gatchet, Georgia Alton, Mary Ann McCluhan, Judith McClure, Jackie Hawkins, Winola Hart, Carol Pickett. TOP ROW: Carol Gibson, Eva Lee Amer, Phyllis Hall, Shirley Flagg, Barbara Ruppert, Virginia Jennings, Jean Atchison, Jo Ann Childers, Jane Atchison, Lynda Anderson, Gloria Smith, Wanda Moffitt, Miss Carroll.

## OFFICERS

Second Semester

Joyce Lidke .....President  
 Anne Dennis .....Vice-president  
 Jane Morton .....Secretary  
 Janis Allen .....Treasurer  
 Judy Hall .....Reporter

and Miss Lucille Carroll

Attendance at meetings, wearing of the uniform, participation in drills given between halves at games, and attendance at games are the means of earning these points.

The club has given strong and noisy support to the football, basketball, and track squads on all occasions when events were held on home grounds. It was able to accompany the teams on many of the trips to neighboring schools. On all occasions the club, which has a membership of about fifty girls, has been able to lend the teams vociferous support under the leadership of the cheerleaders. These leaders are elected annually, two from each of the classes, by the Pep Club.



# Spanish Club



OFFICERS SEATED: Robert Rannie, Suzi Stapleton, Virginia Russell, Kenneth Curtis, Edward Moore, Viola Velt, Margaret Moore, Clemon Small. BOTTOM ROW: Mrs. Brush, Sue Gibson, Ronald Eiman, Darlene Votava, Gladyce Phillips, Mary Ann Rice, Patty Ellis, Carol Collins, Charlene Andes, Nelda Ebeling, Noreen Talcott, Judy Miller, Diann Fisher, Norma Mullenax, Barbara Mann, Carol Roach. SECOND ROW: Richard Chandler, Joan Cason, Genie Gradley, Beverly Douglas, Nancy Barger, Paula Jones, Patricia Dickey, Jan Miller, Clara McCord, Barbara Allen, Beverly Simcosky, Helen Propst, Betty Sue Morris, Juanita Pugh, Faye Dyer, Margaret Kuhlman. THIRD ROW: James Ewing, Jo Ann Overman, Frances Rogers, Louise Hurlbut, Deloris Tandy, Virginia Davis, Rosemary Fry, Joan Graham, Martha Connor, Alexander Smith, Danny Clutter,

## OFFICERS

### First Semester

Kenneth Curtis  
Virginia Russell  
Suzi Stapleton  
Robert Rannie  
Margaret Moore

### Second Semester

President  
Vice-President  
Secretary  
Treasurer  
Reporter  
Parliamentarian

Edward Moore  
Kay Thomas  
Margaret Moore  
Clemon Small  
Viola Velt  
Jerry Sherman

Sponsor: Mrs. Florence Brush

The club, organized to increase the members' knowledge of Spanish, is one of Chrisman's largest. A Spanish supper, which was held in the study hall featured enchiladas, tacos, chile, tostados, pan dulce, and cafe, giving many students their first experience with Spanish-style foods. The Fiesta, a Spanish variety program, was held in the school auditorium, April 13. Entertainment included Spanish dances, solo and choir numbers, and other features. Next was a visit to Guadalupe Center, where Mexican food and music of a Mexican orchestra were equally enjoyed. Climaxing the year's events was a trip to Cuba via bus through St. Augustine and Miami, and by boat to Havana.







Todd Sermon, Eloise Whitney, Phyllis McDandel, Barbara Strawhacker, Barbara Ruppert, Barbara Wingate. FOURTH ROW: Lucille McCormick, Dorothy Hansen, Maralyn Welch, Shirley O'Neal, Joye Sousley, Donald Beck, Charles Thompson, Russell D. Etzenhouser, Louise Braley, David Freeman, Susie Choplin, Judith Heinrichs, Marilyn Andes, Carole Langton, Nancy Gibson, Regina Lux, Barbara Zimmerman. TOP ROW: Jack Horn, Jack Wear, Melvin Crenshaw, Jack Prock, Joe Dick Hightower, Gene Ray Anerson, Munro Ransdell, Tommy Smith, Rex Boos, Charles Hield, Steve Johnson, Neal Scribner, Robert Johnson, Clayton McFarland, Shirlee Osborne, Celia Fry, Janis Williams, Virginia Jennings.



BOTTOM ROW: Elaine Danforth, Chell Tousley, Jane Ola Curtis, Martha Warren, Carol Pickett, Mary Jane Simpson, Alma Griffiths. SECOND ROW: Beverly Isaac, Evelyn Stump, Donna Teague, Barbara Brown, Geraldine Remington, Joan Shepherd, Judy Chapman, JoAnn Ebeling. THIRD ROW: Martha Turner, Joyce Higgins, Peggy Coen, Betty Dudley, Diane Snider, Valeen Braley, Deloris Griffiths. FOURTH ROW: Marie Gradi, Donna Trentham, Carol Stewart, Patricia Faler, Clara Andes, Barbara Van Dyke, Nancy Bentley. TOP ROW: Cora Brown, Anna Mae Howard, Diane Cairns, Donna Lee Eads, Sharon Jackson, Yvonne Rhyan, Wanda Plumleigh.

# Science Club



OFFICERS SEATED: Jerry Dean, JoAnn Ebeling, Kaye Siegfried, Wayne Custead. BOTTOM ROW: Miss Evans, Carol Pickett, Carol Jean Roach, Margaret Moore, Donna Trentham, Janet Conrad, Pat Clark, Cora Brown, Janis Allen. SECOND ROW: Miss Carroll, Edrie Lou Smith, Eulalie Gatchet, Betty Theiss, Mary Ann Hightower, Joan Jenkins, Nancy Barger, Paula Jones, Joyce Bates, Nancy Gibson, Sue Gibson, Jack Wilson. THIRD ROW: LaNelle Brunson, Lois Emerick, Jimmie Melton, Donna Stilwell, Ruth

Elser, Russell D. Etzenhouser, Edgar Patterson, Monte Kahler, Edward Reece, Miss Clement. FOURTH ROW: Maralyn Welch, Velma Davies, Fay Kohlman, Sharon Diamond, Virginia Jennings, James Miller, Walter Beck, Judith Heinrichs, Marilyn Powell, Mr. Tuckfield. TOP ROW: Jim Prichard, Tommy Westwood, Clayton McFarland, Richard Byrne, Tommy Smith, Joe Dick Hightower, Bruce Logeman, Robert Rannie, Donald Cannon, Golden Howery.

## OFFICERS

### First Semester

Russell Etzenhouser  
Richard Byrne  
Kaye Siegfried  
Carol Stewart

President  
Vice-President  
Secretary  
Reporter

### Second Semester

Jerry Dean  
Wayne Custead  
Jo Ann Ebeling  
Elizabeth Williams

Sponsors: Miss Gladys Evans, Miss Lucille Carroll, Miss Ellis Clement, Mr. Ralph Tuckfield.

The Science Club offers membership to all students that are interested and have an M average in Chemistry, Biology, or Physics.

This club is large and very active. It has two meetings each month and usually invites a speaker that talks on various scientific subjects. Students profit greatly by hearing these talks, as these persons are skilled in some particular scientific field. An outstanding speaker this year was a representative from the Standard Oil Company.

To encourage students to continue their study of science, the club offers a scholarship. It is awarded on the basis of competitive examination and fitness for college study.

Concessions at the games help to cover the expenses of the club.



# Youth on the Beam



OFFICERS SEATED: Clarence Stamp, Barbara Mann, Donna Trentham, Maralyn Welch, Shirley Owens, Lloyd Swan. BOTTOM ROW: Margaret Moore, Jo Ann Moore, Marilyn Maston, Eulalie Gatchet, Alice Rose Eldridge, Anna Kennedy. SECOND ROW: Carol Jean Roach, Dorothy

Dickensheets, Doris Huntsucker, Freddye Fitzgerald, Elaine Wiersma, Norma Mullenax, Mr. Walker. TOP ROW: Viola Haynes, Mary Lund, Fern Himes, Jean Atchison, Jerry Stillwell, Rama Wells, Ronald Wright, Leonard Lemka.

## OFFICERS

### *First Semester*

Donna Trentham  
Maralyn Welch  
Barbara Mann  
Margaret Moore  
Carol Roach  
Evelyn Stump

President  
Vice-President  
Secretary  
Reporter  
City Council Rep.  
Song Leader

### *Second Semester*

Maralyn Welch  
Clarence Stamp  
Shirley Owens  
Doris Huntsucker  
Norma Mullenax  
Lloyd Swan

Sponsor: Mr. Erwin Walker

The Youth-on-the-Beam is a growing organization filling a real need for Christian fellowship in school life. The Club was originated in the fall of 1947.

One of the favorite pastimes of this Club is the Bible quiz that takes place periodically. The Club meets each Friday during the noon hour and usually has an inspirational speaker to address the group. It provides a means for the students to participate in the nation-wide Youth-for-Christ movement, and to enjoy fellowship together. The main objective is winning youth for Christ. Members should be congratulated for their ardent attempt. Some of the annual social activities include both a Halloween and a Christmas party.



# As - You - Like - It Dramatic Society



OFFICERS SEATED: Janis Williams, Carol Collins, Jo Ann Ebeling, Mary Lund, Shirley Kofford, Kaye Siegfried, Janet Wheaton, Suzi Stapleton, Elizabeth Williams. BOTTOM ROW: Miss MacDonald, Jane Custead, Mary Jane Simpson, Elaine Zeikle, Mona Myers, Jeanne Benson, Jill Gilbert, Patty Wood, Joyce Lidke, Miss Singleton. SECOND ROW: Nancy Reich, JoAnn Overman, Jan Miller, Judy Miller, Nelda Ebeling, Jimmie Sue Melton, Sue Gibson, Viola Velt, Beverly Wilson, Donna Simpson. TOP ROW: Barbara Zimmerman, Virginia Davis, Susan Choplin, Marcia Mueller, Shirlee Osborne, Grace Twente, Nancy Bradshaw, Ann Dennis, Diane Snider, Phyllis McDandel, Kay Thomas.

## OFFICERS

### First Semester

Mary Lund  
Ann Weddle  
Margaret McKevit  
Jo Ann Ebeling  
Elizabeth Williams  
Janet Wheaton  
Kaye Siegfried

President  
Vice-President  
Secretary  
Treasurer  
Parliamentarian  
Historian  
Reporter

### Second Semester

Shirley Kofford  
Kaye Siegfried  
Janet Wheaton  
Carol Collins  
Janis Williams  
Suzi Stapleton  
Elizabeth Williams

Sponsors: Miss Louise MacDonald and Miss Ellen Singleton.



The As-You-Like-It Dramatic Society has just finished its thirty-first successful year. Membership is limited to fifty girls who are chosen for their scholarship, activities, and service. The original purpose of the club was to develop dramatic literature. The society colors are black and old gold; the flower, the chrysanthemum; the symbol, the owl. Among the various activities of the club is a fall banquet given in honor of the girls' fathers; in the spring the girls entertain their mothers at a tea. Among other annual activities of the club are the Christmas dance, Shan dance, and Senior dance. At Christmas time the members take gifts to the children at Mercy Hospital.



# Nautilus Literary Society



OFFICERS SEATED: Martha Warren, Rosemary Fry, Catherine Doudney, Jane Ola Curtis, Norma McKay, Margaret Moore, Eleanor Mann, Betty Miller, Nancy Barger, Alberta Chrisman, Charlene Ward. BOTTOM ROW: Eleanor Shull, Eleanor Reynolds, Mary Lee Blackburn, Ermaleen Crim, Delores Comer, Betty Allison, Jeanette Thompson, Mr.

Berg. SECOND ROW: Miss Evans, Elaine Danforth, Mary Moore, Mary Ann Hightower, Mildred Stephenson, Bette Moore, Evelyn Stump, Betty Vogel. TOP ROW: Betty Blake, Margaret Kuhlman, Betty Lusso, Diane Cairns, Georgia Alton, Patsy Bates, Nancy Moffitt, Bonnie Lusso.

## OFFICERS

### First Semester

Norma McKay  
Jane Ola Curtis  
Catherine Doudney  
Rosemary Fry  
Martha Warren  
Eleanor Mann  
Eleanor Mann

President  
Vice-President  
Secretary  
Treasurer  
Parliamentarian  
Reporter  
Historian

### Second Semester

Margaret Moore  
Eleanor Mann  
Mary Louise Organ  
Betty Miller  
Charlene Ward  
Nancy Barger  
Alberta Chrisman

Sponsors: Miss Gladys Evans and Mr. W. A. Berg

Blue and white are the colors of the Nautilus Literary Society, and the violet the society emblem; the motto is "Build thee more stately mansions." On November 8, the society presented a motion picture, "Marriage for Moderns", which was followed by a panel discussion. A Christmas party at the home of Norma McKay, a formal Valentine dance at the American Legion Hall, and the senior banquet were purely social activities. In more altruistic vein was the gift of food and other presents to a family "adopted" by the society. Another event was the Mother and Daughter Banquet, at which were read the winning poem and essay chosen from the selections written by members of the society.



chambered  
nautilus



# Shakespearian Literary Society



OFFICERS SEATED: Anna Mae Howard, Alice Phipps, Ruth Ann White, Paula Jones, Martha Eastwood, Carol Stewart, Jo Ann Jones, Virginia Connor, Joye Sousley, Donna Jagger, Janet Conrad, Russell, Barbara Maynard, Sue Watling, Ruth Ann Faye Dyer, Valeen Braley. TOP ROW: Shirley Ziegenhorn, Mary Gunzel. BOTTOM ROW: Fritz O'Neal, Miss Riller, Barbara Strawhacker.

## OFFICERS

### *First Semester*

Jo Ann Jones  
Virginia Russell  
Carol Stewart  
Alice Eastwood  
Anna Mae Howard

President  
Vice-President  
Secretary  
Treasurer  
Reporter

### *Second Semester*

Virginia Russell  
Barbara Maynard  
Sue Watling  
Ruth Ann Ziegenhorn  
Mary Gunzel

Sponsor: Miss Verda Riller

The emblem of the Shakespearian Literary Society is the red carnation, which is given to the new members at the formal initiation. The colors are red and white and the motto is Loyalty, Service, and Scholarship.

One of the social activities of this club was the Christmas dance held at the Hillcrest Country Club. A worthy activity of the society was the filling of food baskets for needy families at Christmas. The Shakespearian Literary Society joined the other societies in presenting the Shan Program, which was given to raise money to help buy robes for the A Cappella Choir. The club bought Shakespearian literature for the English classes.



Sign here Please



Dear Cass,

I certainly feel privileged to have been your friend for the past two years and hope that our friendship will run the gamut of such things and extend completely to the end of whatever time there is.

Good luck,

Ed Moore

Dear Cole,

It has been a great pleasure to know you. I do hope we meet again next year. It has been a lot of fun first and second hours. I sincerely hope you have good luck in the coming years.

James Ewing



Sign Here Please

Dear Celia,

I have enjoyed seeing you around school this year. I have come to know you better this year. I hope you have Lady Luck with you. May you keep your high standards and not let them down. May God be with you in the coming years.

John Probst

Ce Ce

It's swell to know a girl like you. I hope you can have as much fun as a senior next year as I have had.

Best of everything  
See you at Gradland  
Jerry Sherman

Photo of Luck  
Nellie Smith



Osage

Buena suerte, Celia. Florence Bush

The Gleam staffs and sponsors express their sincere appreciation to the advertisers, photographer, yearbook company, administrators, faculty, and student body whose valuable assistance have made possible the publication of the 1951 Gleam.

Willy invites you to visit the advertisers through the following pages of the Gleam.

**INDEPENDENCE AUTO LIVERY**

Stand  
Maple and Osage -- Standard Oil Station  
Call Day or  
Indep. 0700 Night  
H. D. McClavin Independence, Mo.

"The Finest in Hardware"  
Tools Sporting Goods  
Housewares  
**W. B. DICKEY**  
Hardware and Supply Co.  
208 N. Liberty



Bob Eager Rents  
Almost Everything At

**RENT - ALL**  
EQUIPMENT CO.  
700 N. Main



**TUCKER - ISM**

Graduates of William Chrisman High School: Do you realize what fast and glorious company you are stepping into when you receive your diploma this year? You are in the ranks of men and women who have achieved much and who stand high in government, business and all the professions. You are standing elbow to elbow with President Harry S. Truman, his lovely wife and daughter; and with many other persons whose names have often been flashed across the pages of time and who have made great contributions of service to all mankind.

This places a great responsibility on you, young people! Let the diploma you receive today be your inspiration for more education and better preparation, in order that you may be fully worthy of the great company you join when you graduate. Heartiest congratulations and best wishes.

*Charles Tucker*  
TUCKER FURNITURE COMPANY

*It's . . .*

# **CHILDERS**

*for*

# **PRESCRIPTIONS**

*Best of luck, kids  
Keep up with your honors  
and achievements next year.  
Sincerely,  
Daddy  
E. J.*



Frank R. Brown, Jr

Charles B. Stuart

Damon A. Bogurt

Jerd T. Bales

Arch D. Woods

Otho (Bud) Slayton

**First National Bank Building**

# ===== KNOEPKER'S

- Lingerie - Hosiery
- Dry Goods - Notions
- Shoes - For the Family
- Ladies' Ready to Wear - Millinery
- Men's Clothing and Furnishings

North Side Square

*You are really going to go a long way like at Christmas. At least I think you should. It's been a lot of fun to know you these few years. Keep up the good work. So do of back but if I know you won't need it.*  
*L. Huck*  
*Shield*

## GRANADA

*Sweet Shop*

327 WEST MAPLE AVENUE

### Cairns Flowers

We Specialize in  
CORSAGES

1205 South Noland Phone CL. 9340

### SCHWAN'S

for Books and Supplies  
Pen and Pencil Repairing  
1 Day Service

CONGRATULATIONS TO THE  
SENIOR CLASS  
**Independence Animal  
Hospital**  
DR. E. W. THEISS

*Dear Cecil  
Well, as I said if you  
want him, hope you enjoy  
him - don't think it's that serious  
yet - but just have fun always.  
I wish I could have known you better  
before - you really are sweet*

Our **Congratulations**  
to the  
Senior **Class**  
of  
William **Chrisman**

**WOODCRAFT  
EQUIPMENT COMPANY**

Compliments of  
**JOHNSON  
&  
SONS**  
Monuments  
224 W. MAPLE      CLIFTON 7279

**BROWN DRUG CO.**  
South Side of Square  
and Englewood  
Your REXALL Stores  
**More Than 83 Years of Service**

Congratulations  
from  
**MODERN OPTICAL**  
204 No. Liberty  
Phone Cl. 8855      Independence, Mo.

*Good luck to the Senior Class*  
**BELL PEST CONTROL**  
127 E. Lexington St.      Cl. 8247  
**DIECKMAN PLUMBING CO.**  
424 E. Short      IN. 2772

CONGRATULATIONS

To The

Senior Class of 1951

# JACK FROST FOOD STORE

QUALITY MEATS & GROCERIES

804 West Lexington

IN. 3887

CONGRATULATIONS  
to the Senior Class

**GRANT**  
Batteries

Grant Storage Battery Co.

Wm. F. Lidke Mgr.

INDEPENDENCE

CLEANING

&

LAUNDRY

CO.

115 SO. OSAGE

IN. 3343

**JOHNSON**

Phones: Clifton 7664-5

**FLORIST**

Betty and Marion J. Johnson

10880 Truman Road

Independence, Mo.

**GALLOWAY  
STUDIO**

Gleam Photographer

Indep., Mo.

COMPLIMENTS OF

**L. L. FIKE METAL PRODUCTS**

215 E. KANSAS

CL. 9004

# Designed for Business and Professional Service



Our printing department can give you complete production, using modern papers and type faces. Our stationery store is for your convenience in office necessities. A call will convince you that we are here to serve you in your commercial needs.

Phones:

Clifton 8788

Clifton 8789

## LAMBERT MOON

*Printers and Stationers*

# *Satimer Motors*

DODGE — PLYMOUTH PASSENGER CARS  
DODGE JOB-RATED TRUCKS

301 SOUTH MAIN

TEL. CLIFTON 9305

INDEPENDENCE, MISSOURI

"Compliment Her With Flowers"

**HILL FLOWER SHOP**

CL. 8812 1440 West Lexington

**ECONOMY PRINTING  
& STATIONERY CO.**

*wishes*

**THE SENIOR CLASS  
CONGRATULATIONS**

127 E. LEXINGTON IN. 9259

*Congratulations to the Senior Class*

**OVERMAN'S FOOD MARKET**

SPRING & FARMER In. 0133-0134  
A Wolferman's Associate Store

REAL ESTATE - INSURANCE - LOANS

**Choplin - Hood - Shelton**

209 W. Lexington CL. 9106

CONGRATULATIONS TO THE GRADUATING CLASS OF 1951  
AND BEST WISHES TO ALL THE STUDENTS OF  
WILLIAM CHRISMAN HIGH SCHOOL

SEE THE MOST BEAUTIFUL THING  
ON WHEELS



317 WEST MAPLE

CL. 9800

'51 Grads!  
PUT YOUR THRIFTY WANT ADS  
IN THE  
**Pictorial Shopper**

REQUEST TIME



Your Favorite  
Tune

Your Favorite Way



Every Weekday Afternoon

KIM O

1510 On Your Dial

**LEE'S** SPORTING  
GOODS

- School Sweaters
- Chenille Numerals
- Girls Gym Suits
- Gym & Basketball Shoes

128 W. MAPLE      NORTHSIDE SQ.

Congratulations to the Class of 1951

**INDEPENDENCE PAINT AND  
WALLPAPER COMPANY**

220 W. Lexington      INdep. 1543



# Sturges Jewelry Company

The following are names of the winners of the Mary Sturges Memorial Art Prize and Essay Prize Medal.  
The Art Prize is given by Harry Sturges and the Essay Prizes Medal by the Sturges Jewelry Company.

## ART PRIZE

1950--Katherine Perkins  
1949--Phyllis Davis  
1948--Harold McClain  
1947--Billy Jean McDonald\*  
1947--Thomas Feldhahn\*  
1946--Helen Hendrix  
1945--Richard Lowell Neas  
1944--Clara Wayne  
Hendrickson  
1943--Mary Green  
1942--Dolores Adams\*  
1942--Pollyanna Bolinger\*  
1941--Rachel Peck  
1940--Fadona Lee Bell  
1939--Evelyn Crabb  
1938--Alice Harrington  
1937--Bernadine Martin  
1936--Maxine Budd  
1935--Vivian N. Barton\*  
1935--Clark V. Blocher\*  
1934--Munson Howe  
1933--Iris Tordoff  
1932--Helen Moorman  
1931--J. W. Thompson  
1930--Frances Allen  
1929--Mildred Hanthorn  
1928--Velma M. Thompson  
1927--J. A. Becker, Jr.  
1926--Mabel Ohmann  
1925--Marcella Zutz  
1924--Jim Ed Spencer  
1923--Anna Kreeger  
1922--Pauline Millender  
1921--Ruth Warren  
1920--Aileen Bullard  
1919--Helen Clements  
1918--Frances Royster  
1917--Marguerite Barnett  
1916--Charnelcie Gabriel  
1915--Arthur Smith

1914--Martha Warnock\*  
1914--George Bartholomew\*  
1913--Grace Lewis  
1912--Lucy Hudnall  
1911--Esther Ward  
1909--Ruby Short  
1908--Mabel Mills  
1907--Minnie Hickerson  
1906--Ruby DeWitt  
1905--William McCoy  
1904--Harry Smith  
1903--Tessie Smith  
1901--Tasker Taylor  
1900--George Edward Smith

## ESSAY PRIZE

1950--Barbara Ramsey  
1949--Marilyn Guyton  
1948--Bob Southern  
1947--Ulysses Roy Taylor  
1946--Angela Patterson  
1945--Patricia Gabriel  
1944--Charlotte Garrison  
1943--Verlyn Reese  
1942--Katherine Green  
1941--Dorothy Mills  
1940--Rosemary Spears  
1939--Anna Mae Goebel  
1938--Warren Cannon  
1937--Shirley Perdee  
1936--Elnora Short  
1935--Marjorie Moore  
1934--Mary Elizabeth Gooch  
1933--Bessie Garrison  
1932--Vera Ruhling  
1931--Maxwell Constance  
1930--Emina Shank  
1929--Florence Willard  
1928--Jacob A. Dickson  
1927--Afton Kelly  
1926--Robert Sullivan

1925--Mildred Jasper  
1924--Virgil Julian  
1923--Freda Sturn  
1922--Carol Gillen  
1921--Vivilee Proffit  
1920--Elizabeth Palmer  
1919--Frances Royster  
1918--Ardis Ragland  
1917--Mary Jones  
1916--Martha Robinsor  
1915--Louise Hagler  
1914--Margaret Bostian  
1913--Dorothy Georgen  
1912--Leah Jarred  
1911--Margaret Echarht  
1910--Ruby Short  
1909--Cammie Johnston  
1908--Imo Jones  
1907--Helen Ross  
1906--Lucy Dickinson  
1905--Mattie McCoy  
1904--Frances Clements  
1903--Isabel Shipley  
1902--Bessie Wheaton  
1901--William Lloyd Garrett  
1900--Ina Mae Berry

\*Two Art Medals were given in 1914, 1935, 1942 and 1947. The judges were unable to make a decision.

Besides the above, the Sturges Jewelry has each year for forty-two years, given a ball to the Football Team and to the Basketball Team for their opening games.



Dear Cele, wonderful  
 year and if you  
 were happy to have  
 so many friends. Lots  
 of luck. Beverly  
 Wilson

To a swell girl comes  
 my cartograph  
 B.E. privilege by  
 this gesture of mine  
 Kenneth Lee Phillips

TO THE GRADUATE OF  
 1951  
 CONGRATULATIONS

CC  
 Lots of luck + Best  
 Wishes to one of the  
 most ---- girls I  
 know. Let me know  
 when you've decided  
 to tell me all.  
 you try to counsel  
 all. Just wait  
 until I counsel  
 my future sister  
 in-law. Then  
 I will know all  
 about your  
 present and  
 future thought

**MISSOURI WATER COMPANY**

123 West Kansas St.

Independence, Mo.

**INTER -- CITY  
 FREIGHT LINES**

CONGRATULATES THE  
 GRADUATING CLASS OF  
 — 1950 —

**MARVIN C. CARL**  
 CL. 9007 120 E. LEXINGTON

Congratulations Seniors  
 from  
**PEGGY'S DANCING SCHOOL**  
 All Types Dancing

Class or Private Lessons  
 Reasonable Rates

9509 LINWOOD PHONE IN. 3909  
 INDEPENDENCE, MO.

If you can't  
 figure this  
 out it's your  
 own fault  
 Robert Carver

**Lollas Bros. Shoe Repair**  
 Shine Parlor and Hats Cleaned

112 WEST MAPLE Phone IN. 9636  
 INDEPENDENCE, MISSOURI

It Pays to Play

**Sportsmen Paradise**  
**GATEWAY**  
**SPORTING GOODS Co.**

213 North Main  
 Headquarters  
 for  
 Sweaters Jackets Emblems

COMPLETE LINE OF  
 Football Basketball Gym  
 and Track Equipment

It Pays to Play

**MODERN SHOE REPAIR**

218 WEST LEXINGTON  
 INDEPENDENCE, MISSOURI  
 W. E. Welch, Prop.

**BUNYAR DRUG CO.**  
Prescription Specialists

PHONE INDEP. 0162  
121 WEST LEXINGTON SOUTH SIDE SQUARE

**GEORGE C. CARSON**

FUNERAL AND AMBULANCE SERVICE

LADY ATTENDANT

Phone CLifton 7900

—Our Funeral Home is COMPLETELY Air Conditioned by Refrigeration—  
101 North Pleasant Street INDEPENDENCE, MISSOURI

**CONGRATULATIONS**

To The 1951 Graduates  
of  
William Chrisman  
High School

from  
A NATION-WIDE INSTITUTION  
**J. C. PENNY CO.**  
INCORPORATED  
South Side of Square  
INDEPENDENCE

Compliments of

**JENNINGS FURNITURE  
COMPANY**

THE HOME OF BETTER FURNITURE

Congratulations  
to the Senior Class

**Luff's Lunch**

**GRINTER STUDIO**  
FOR PHOTOGRAPHS

126 West Maple Phone IN. 0551  
Independence, Missouri

*Dear CC. I want to wish you the best of happiness. I have spent a most pleasant year debating with you and know that you will do a all right for everything girls to come. Thanks to a very wonderful girl.*

*Sincerely,  
John Parron*

*Lots of luck to a very sweet girl with a wonderful personality.*

*Best wishes to a really sweet girl, Mary Johnson.*

*CC - Best I think to a real debater. Thanks to the C. C. Carson.*

*Handwritten notes at the bottom of the page.*

*Best of luck  
to you from  
Sweden*

# Slover's Fountain Lunch

DRIVE IN  
**CHILI** **HAMBURGERS** **MALTS**  
 Latest Equipment  
 River and Lexington Independence, Mo.

*It has been a pleasure to  
have you here. I hope you  
will come back soon. I  
will be glad to see you  
again.*

## IF IT'S FENCE—WE HAVE IT

Electric Weld Lawn Fence  
NON-CLIMBABLE



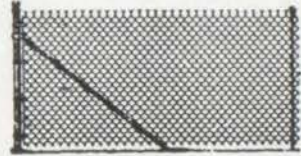
BARB WIRE



Ornamental Lawn Fence



Chain Link Fabric



STEEL FENCE POSTS

EVERYTHING FOR THE FARM -- WALK GATES -- DRIVE GATES -- CORRUGATED STEEL ROOFING

## Stock Yards Farmer's Store

311 Cherokee Street, St. Joseph, Mo.

17th and Liberty Sts., Kansas City, Mo.  
1 Block South, 2 Blocks East of Live Stock Exchange

### SMEBY'S

Television and Radio

Sales and Service

117 W. KANSAS Cl. 8273

SUDORA BEAUTY SALON  
AND CHILDREN'S WEAR  
 215 N. Main Cl. 7240  
 SUE MATTHEW DORA PERKINS  
 Consult Us for the Newest  
 COMPLIMENTARY COIFFURES  
 Hosiery and Jewelry Bonnie Bell Cosmetics

Phone Indep. 2687

### C. E. MALLORY

Plumbing

403 South Hocker Independence, Mo.

Congratulations to the Senior Class  
**WHITE'S SERVICE STATION**

Lubrication - Tires - Batteries  
 Accessories - Washing  
 Phone IN. 4881

MAPLE & PLEASANT INDEP., MO.

Phone IN. 2626 204 W. Lexington

### COMPLETE JEWELRY SERVICE



John T. Bain Independence, Mo.

### WINSTEADS

Drive-In

STEAK  
HAMBURGERS

*Handwritten notes at the bottom of the page, including "I hope you will come back soon" and other illegible text.*

Hi.

I would like to wish you all the success in your "let's" you bring some honors back to old "belly" next year

CONGRATULATIONS

● Chili

● Cold Drinks

● Sandwiches

● Drug Sundries

● Franklins Sealtest Ice Cream

Courteous

Friendly

Prompt

Service

to the

Good luck

GRADUATING CLASS OF

Bill Gardner

1951

# MORFORDS

VAN HORN PLACE

1008 Truman Rd.

ENGLEWOOD DRUG SUNDRIES

ENGLEWOOD PLAZA

## ECONOMICAL PRESCRIPTION SERVICE

● When you are seeking Health, price-tags are a minor consideration. But here it is a matter of principle to price each prescription according to a fixed formula. In practical terms, our prices are no higher—often somewhat less—than you'd pay elsewhere. Try us next time.

**Watt Drug Co.**

1337 West Lexington

Watt & Mackay  
Prescription Shop  
317 West Kansas



COMPLIMENTS OF

**NOEL INSURANCE  
AGENCY**

210 WEST MAPLE AVE.

INDEPENDENCE, MO.

**BARTO COAL & GRAIN  
COMPANY**

*Poultry and Dairy Feeds*

**COAL, COKE, HAY, STRAW**

215 W. White Oak

Phone Indep. 1344

CONGRATULATIONS  
From

**Bradley's Super Market**  
Delicatessen

908 W. College    Indep. 5944-5945  
**GROCERIES - MEATS - VEGETABLES**

CONGRATULATIONS  
to the  
GRADUATING CLASS OF 1951

# THE CHRISMAN - SAWYER BANK

Member Federal Deposit Insurance Corporation

Congratulations for a Grand School Book

**Independence Drug Co.**

THE HIGH SCHOOL PHARMACY  
and PRESCRIPTION SERVICE CO.

*"Old John Feldhahn's"*  
*New Prescription Shop*

208 W. Lexington

**ENGLEWOOD**

5 - 10 - 25¢

5 - 10 - 25¢

10923 WINNER ROAD  
INDEPENDENCE, MISSOURI

GEORGE S. DODSWORTH

Sales With Service

## MUELLER'S APPLIANCE STORE



General

119 South Main

Independence, Missouri

Electric

Telephone

CLifton 8700

**JOHNSON CLEANERS**

PHONE IN 0204-0205

ADDRESS 215 W. MAPLE

*48-Hour Pick-Up and Delivery  
Service*

**SMITH'S QUALITY  
BAKERY**

214 W. Maple

IN. 0488

# Howdy Folks:

ASSURE YOURSELF OF THE BEST IN GROCERIES  
AND MEATS  
WE CUT STRICTLY CORN FED BEEF

MERLE M. QUICK, JR.

QUICKS **AG** MKT.

CLASS OF '30

Expert Cleaners of Oriental and Domestic Rugs

**MAKE-NU CARPET WORKS**  
VIRGIL DOBSON

PHONE 1017½ W. TRUMAN RD.  
INDEP. 1628 INDEPENDENCE, MO.

TYPEWRITER, BOOKKEEPING MACHINES,  
ADDING MACHINES, DUPLICATING  
MACHINES AND SUPPLIES

**JONES & HERALD OFFICE EQUIPMENT CO.**  
GUARANTEED SERVICE ON ALL MAKES  
Student Rental Type

CL. 6728 109 EAST LEXINGTON  
INDEPENDENCE, MO.

## ASK WILEY'S

whatever you want  
to know

about Paints  
Varnishes  
Enamels  
Artists' Materials  
Brushes  
Etc.

**WILEY PAINT STORE**

133 E. MAPLE

CL. 8937

Compliments of

**INDEPENDENCE STOVE  
& FURNACE CO.**

Cor. Hayward & Cottage  
Independence, Mo.

Compliments of

**GRIMMER DE BACKER**  
your  
**KAISER-FRAZER DEALER**

300 SO. MAIN INDEPENDENCE, MO.

Compliments  
of

**ZIMMERMAN'S GROCERY**  
603 N. RIVER

*Dear Ce Ce Here's the best  
of luck to the daughter  
"The Voice" because she  
sings everything so  
sweetly. I hope you have the  
best of everything.*

*Best of luck to a wonderful  
person. I know you will  
be a great success in every  
thing you do. Best wishes  
Nancy  
Angie*

*Best of luck to  
you & yours  
I hope you  
are having a  
great time  
at the  
beach*

The best of luck to a swell girl and  
classmate. Joe Dick Hightower

# FIRST NATIONAL BANK

## INDEPENDENCE, MO.

Dear "C C"

Well, kiddo, we've struggled through debate class, contests, hotels, fears, anxiety and about everything else you go through when you take debate. Remember

MEMBER FEDERAL RESERVE

MEMBER F.D.I.C.

our long talks in Athens and our 5 wins and 1 loss. Now, ahead of us we have California. As far as I'm concerned, I couldn't be going with any other kids than you and "Coty".

Congratulations . . . . .

And  
Best Wishes  
From

**HELZBERG'S**

Middle West's Largest Jewelers

106 West Maple

Independence, Missouri

**DELL CRENSHAW**

CAMERA SHOP

11010 Winner Rd. Ph. INdep. 1344  
Independence, Mo.

**Mark W. Weston**

Flowers for All Occasions

3930 S. Chrysler CL. 7424

CONGRATULATIONS

TO THE

Graduating Class of 1950

Loads of love,  
Phyllis

"The Dominant Store of Independence"

**a. J. Bundschu**

East Side Square

Hi C C  
Well, another year has come and gone but look what we've got to look forward to ???

Thanks loads for all the time  
Phone Indep. 1850  
Independence, Missouri

you have put yourself out to play for me. You don't know how much it has meant to have someone I can rely on. Lots of luck to a swell girl  
D.W.H.

*... kind of girl  
 that never outgrows  
 anyone, I wish I were  
 that way. I wish I were  
 some girl you would be  
 satisfied with but I know  
 these, I wish you best  
 year I know of it. Good luck  
 next year! Love, Daisy Freeman*



## FAREWELL

Thanks for the memories  
 Of crowds in Chrisman halls,  
 Lockers much too small,  
 Though we've complained about them  
 How we'll miss them all in all,  
 So thank you so much.

Thanks for the memories  
 Of friendships we have gained,  
 Terms we have acclaimed,  
 Honors and achievements  
 That our classmates have attained,  
 Oh, thank you, so much.

Week-ends brought games and cheers and laughter,  
 Each summer was spent in work or play,  
 Tournaments and dances and assemblies,  
 We've all had at Chrisman.

So, thanks for the memories  
 The Senior dance and plays  
 Now Graduation day,  
 Our high school days are ended,  
 And we must be on our way,  
 So farewell to you.

*Oh you're  
 really a super  
 kiddie and I  
 know you'll be  
 a second  
 Starbi someday.  
 Paula Jones*



Autographs

Lot of Luck.  
I know German

Dear A.C.  
Since D. Johnson  
left we haven't had  
much to talk over. So  
such a shame. So  
of luck in the future  
I'll

Lot of luck.  
to a sweet kid.  
See ya next year.  
Love  
Harlene  
Fulton  
Lot of luck  
to one of the nice  
girls I have ever known  
Pat Butler

Best wishes,  
Donald Bain

Good Luck  
Phonol P. Fulman

Thomas M. Butler

A.C.  
The best of  
everything in  
all you do. Have  
fun this summer  
while you are  
in California -  
think of poor people  
like me staying  
back here.  
Patty Gray

Best wishes  
and lots of luck  
always  
- Jim Andrew

Cakes to cakes  
and dust to dust  
if it weren't for  
your cake  
to help

Pat Butler  
Harlene Fulton  
Donald Bain  
Thomas M. Butler  
Patty Gray  
Jim Andrew

Phil Goodwin

# Autographs

Dear Cecie

I sure have enjoyed knowing you this year. You have been a lot of help in Spanish class. I would have never made perfect papers sometimes. You real swell. Lots of luck to you. You deserve everything you get and more.

Yours  
"Sue"

Sincerely enjoyed your keen sense of humor and admired your many activities.

Best Wishes  
Arenath Schroeder

Dear Cecie:

It has really been nice to have you in Orchestra. I am so very glad that I got to know you. I want to wish you all the happiness in this world. May you have all the luck there is.

Love  
Jo Farley Seter

Congratulations! You've made a wonderful record for yourself in just a short year at W.S.H.S. I know even greater things lie ahead for you. Best wishes and may better things be yours.

George Bailey

Back again - but still very little to say - you've written your own fine record of wise - so I'll say again good luck, best wishes, more of everything good.

*[Faint handwritten notes and signatures in the bottom left corner, including "Cecie" and "George Bailey"]*

# Autographs

Dearest "C.C."

I'll never be able to tell you just exactly how much fun I've had the pleasure to experience with you.... notes in Keller's class... Jay's old lunch hours with Mr. Metel + his little additios... the tournaments... member the walk along "Lake Mich"? Well that's just a few of the many things I enjoy remembering over... Well "C.C." I want to express my sentiments... I like you... your personality can't be beat... and I'm hoping we'll get to be even closer friends during our trip to Calif... I'm wishing you luck has the power to get you placed... you'll certainly go far... I've always watched you from the bottom of my heart...  
 \_\_\_\_\_ sty.

I'll see you next year.  
 Richard Whiloughby  
 Lots of luck  
 Love  
 Dad + Mom

Dear C.C.  
 It's been nice knowing you this year. I'm looking forward to getting better acquainted next year. Good luck,  
 Betty Allison

Lots of Luck  
 and Best wishes  
 Ronald E. Ginn  
 (mouse)  
 Lots of luck to a swell girl and fellow (spare) student.  
 Jack Wear

Autographs

Dear C.C.  
Goodbye &  
remember all  
the really wonderful  
times we had together.  
Ever remember Paul &  
love Pat

Best of Luck to  
you girl all the  
good luck  
Viola Haynes

Best wishes and  
all the success possible  
to a very nice girl  
JoAnn Moore

Dear C.C. -  
All the fun we had in  
Omaha (on the balcony)  
and in Springfield I'll  
never forget. Let's hope  
we'll have just as much  
next year.

Love,  
Ozzie

Dear C.C.  
Luck and success  
in whatever you do.  
A fellow? intellectual?  
like you should leave  
a real mark on the  
world.

Max  
Louise Wilkie

Best of Luck  
to a swell girl who  
I know almost all  
my life, and who has  
made English enjoyable  
this year.

Cheryl  
Salmer

Best wishes  
& continuing to chuckle  
at that dumb !!  
C.C.

Best Wishes Celia - Jerda Kille  
Best wishes Gladys Evans

Dear CC,  
I have certainly & hope  
enjoyed this year & hope  
you have done the same  
good luck & all the happiness.  
Donna Seague

Best luck to a  
very sweet girl.  
Genie Bradley

Dear CC,  
If you compared this with  
what I wrote I don't find  
a little repetition cause you all  
are like sisters even though you  
don't look alike. Hope you can  
find someone with long arms to  
wear your notes next year. See  
you at MacLand.

Love,  
L

Best of Wishes  
Dale Giness

Best of luck to  
a very sweet girl.  
Nancy Rich

Celia - Best Wishes to one swell girl!  
May <sup>you</sup> enjoy life ~~in~~ in the future.  
(KINDA MESSY)

Lots of Luck

Kent Mueller

