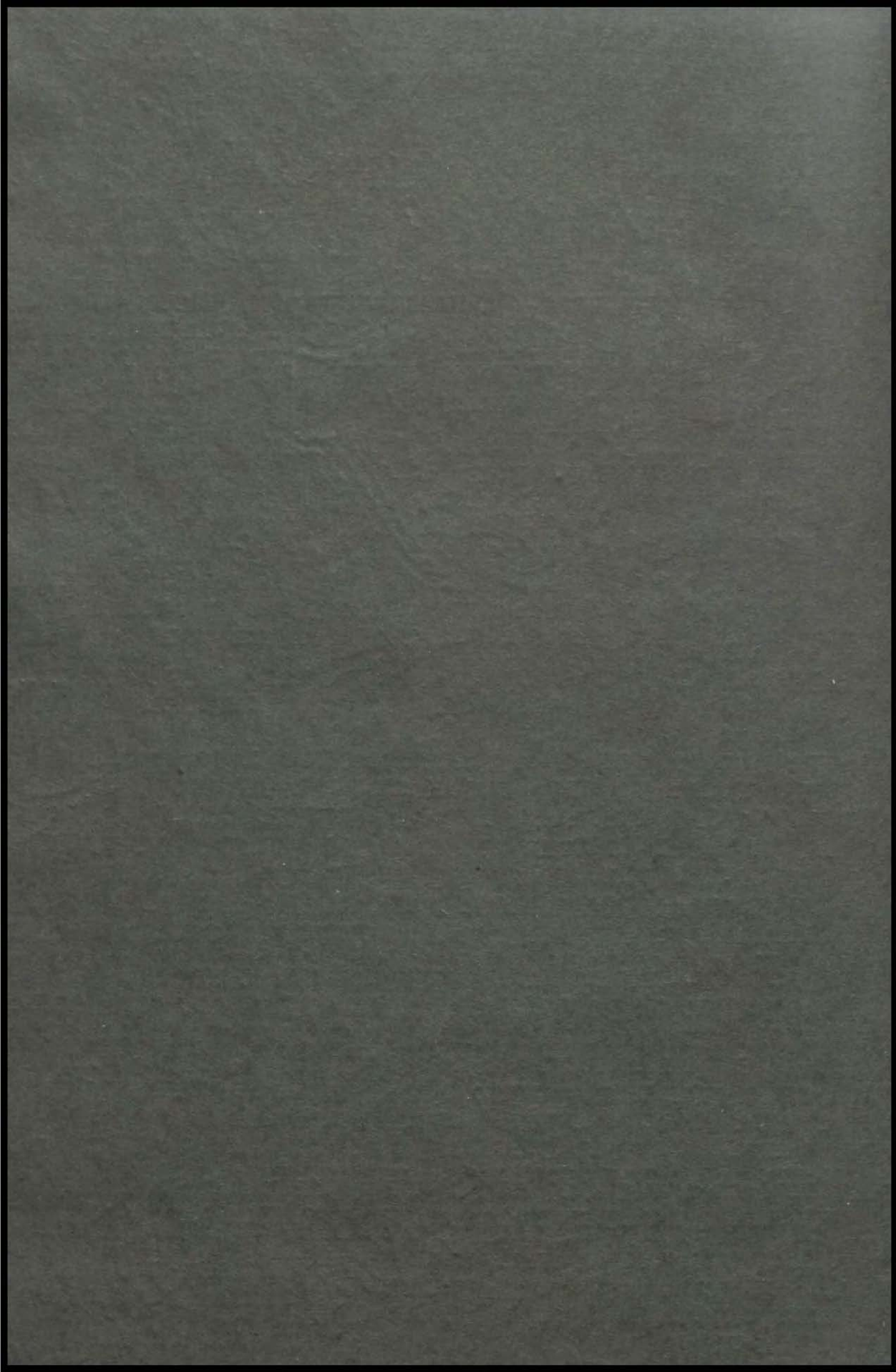


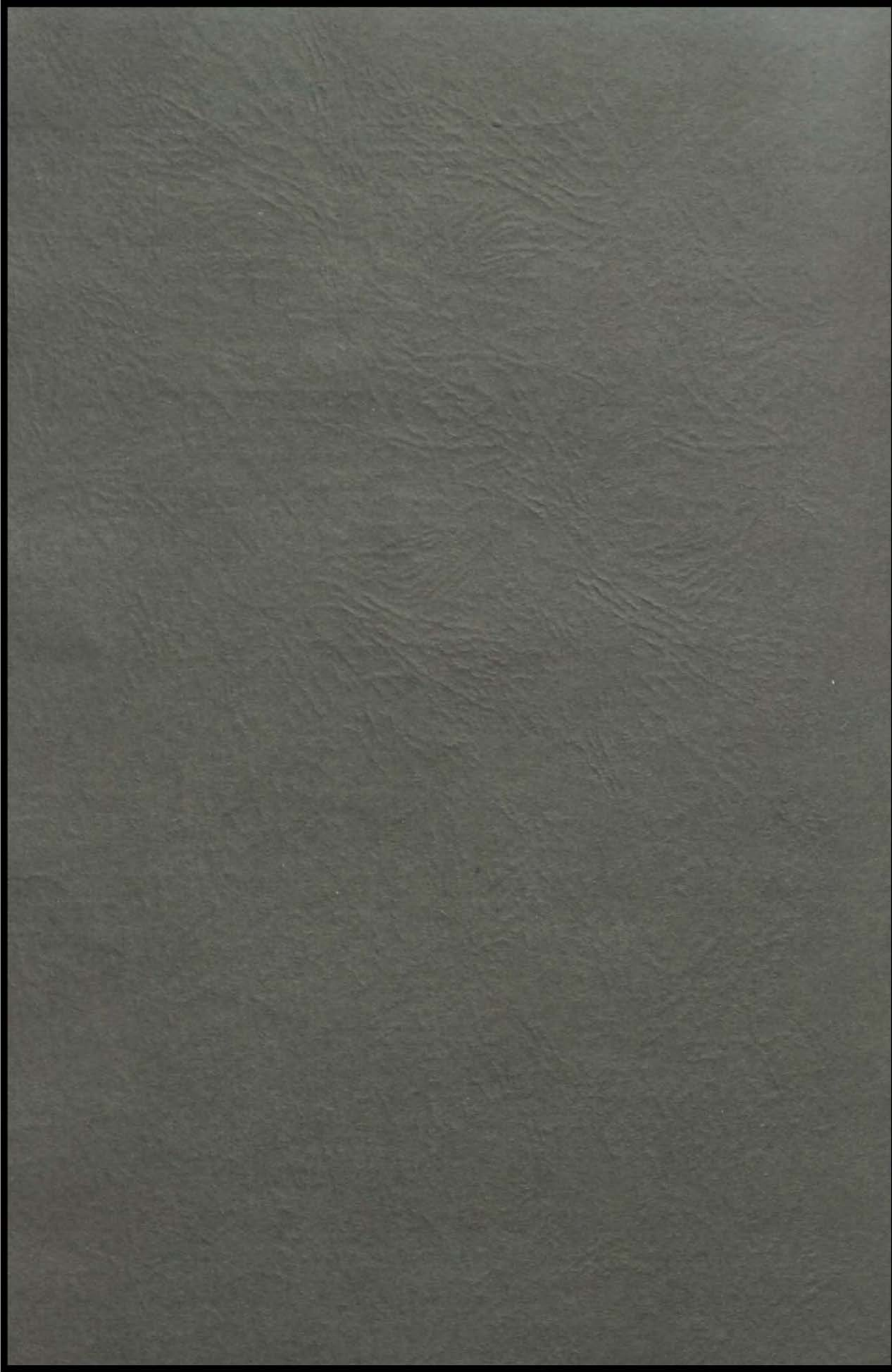
HERALD

1924



EX  
LIBRIS  
101









THE  
**HERALD**

PUBLISHED  
BY THE  
SENIOR CLASS  
OF  
WESTPORT  
HIGH SCHOOL  
KANSAS CITY,  
MISSOURI  
1924

---

---

## FOREWORD

THE YEAR 1923-24 IS BROUGHT TO A CLOSE. IT NOW SEEMS FIT TO RECORD THE EVENTS OF THE LAST NINE MONTHS IN THIS, THE TWENTY-FIRST VOLUME OF THE WESTPORT HIGH SCHOOL HERALD. THE WISH OF THOSE WHO HAVE ASSISTED IN THE COMPILATION IS THAT THESE PAGES MAY, IN FUTURE YEARS, AFFORD HAPPY MEMORIES TO FORMER WESTPORT STUDENTS. IF THIS PURPOSE IS ACCOMPLISHED, THE EFFORTS SPENT HEREIN, WILL NOT HAVE BEEN IN VAIN.

! | !  
.  
M CLARK

DEDICATED

To  
The Memory  
of

Charles Augustus Herrmann

Teacher of Chemistry

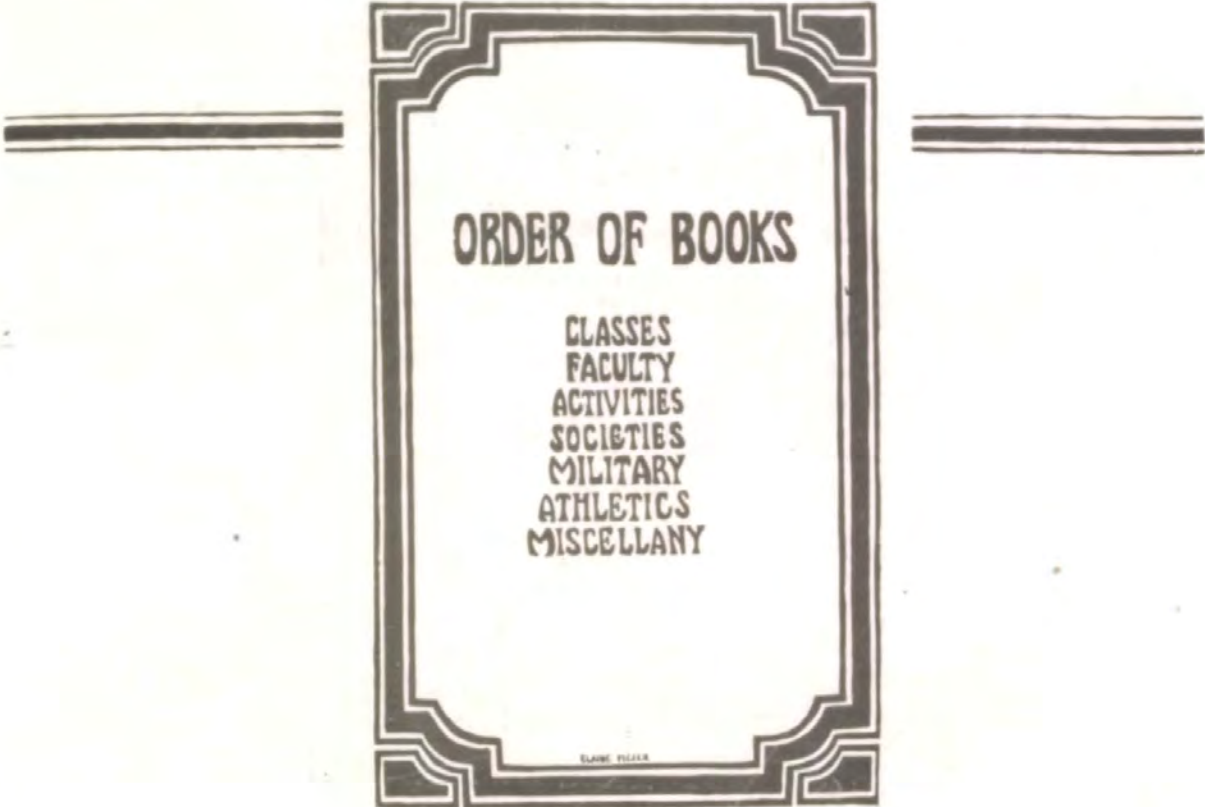
in

Westport High School

for  
Sixteen Years

! ! !

H. CLARK



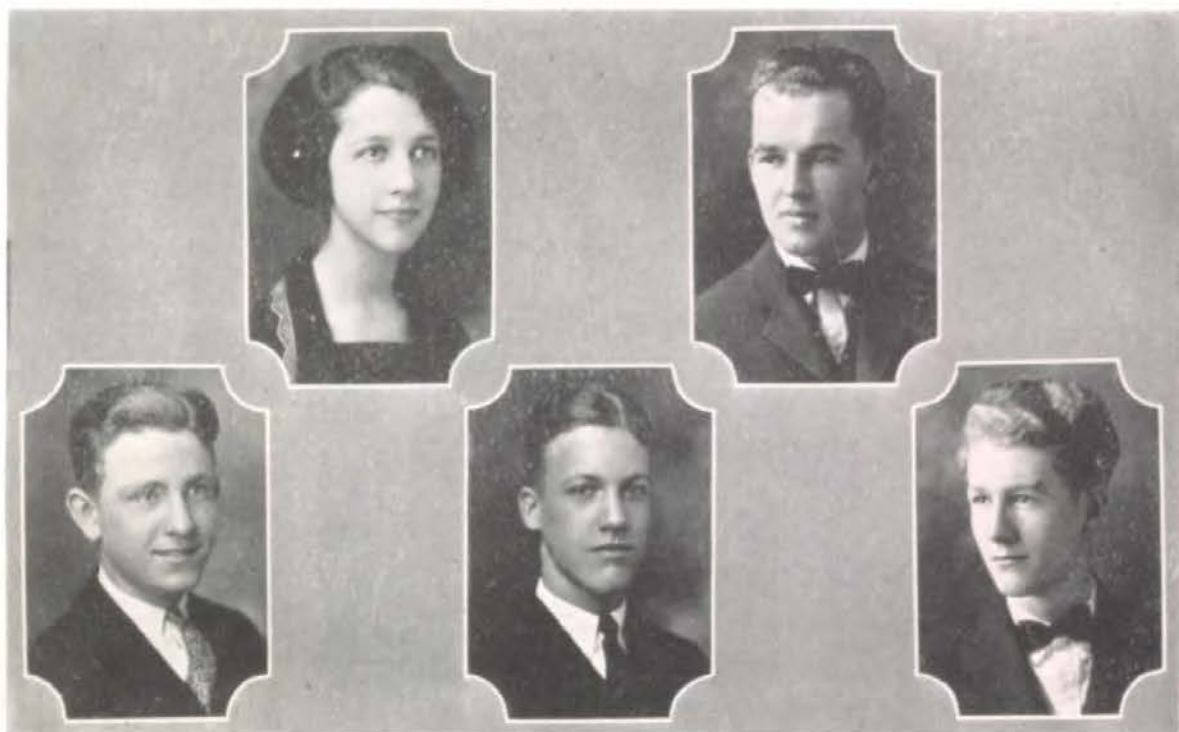
**ORDER OF BOOKS**

**CLASSES  
FACULTY  
ACTIVITIES  
SOCIETIES  
MILITARY  
ATHLETICS  
MISCELLANY**

ELMER PILLER



## Senior Officers



ARDELLE BRITT .....	<i>President</i>
LAWRENCE STEVENSON .....	<i>Vice-President</i>
VERNON KASSEBAUM .....	<i>Secretary</i>
JAMES DISSMAN .....	<i>Treasurer</i>
HUGH TAYLOR .....	<i>Sergeant-at-Arms</i>

Through the wide-flung doors of Westport there poured in the autumn of the year 1920 a group of individuals with ambition immeasurable, with spirit unquenchable. This class of '24, rare as the twenty-ninth of February and the election of our nation's executive, and which is the last class to go through Westport as a unit, stops for a moment in its activities to review its accomplishments.

While ranking high in scholastic achievements, at the same time the class of '24 has held high the old traditions of sportsmanship and of social activity. Athletics, literature, drama, and music have budded forth under the careful guiding hand and active energies of the senior class. In football, basketball, track, debate, oratorical contests, self-government, glee clubs and orchestras, the members of the class have performed with fervor their duty to their school.

Keenly appreciative of the kind help of the faculty, the class of '24 bids farewell to the Gold and Blue, sincerely hoping that future classes may cling to its ideals and attain an equally high success.

CANDIDATES FOR  
GRADUATION

JEROME AARON  
Track squad.

NORTON ADLER

ELIZABETH LOUISE ABEL  
Round Table; Reserves.

AUDREY VIRGINIA ALLEN  
Student council, alternate.

AMELIA CATHERINE ACKERMAN  
Reserves.

ANNA BERTHA ALT

MARION ADAMSON

VERNA MAY ANDERSON



CANDIDATES FOR  
GRADUATION



JEWELL SWEETHEART ATKINSON  
Reserves.

HAROLD RICHARD BAILEY  
Track, '22, '23; Engineers.

CALVIN AUSTIN  
Dance orchestra.

CAROLINE DORCAS BAKER

MARY ANNE AUSTIN

ROSE MERCEDES BAKER

HELEN LOUISE BAIER  
Honor student; Hockey, '20; Cir-  
culo Calderon; Reserves, cabinet,  
'23, '24; Spanish play.

PAULINE MARIE BARBEN  
Baseball squad; Reserves.





CANDIDATES FOR  
GRADUATION

MILDRED ELIZABETH BARKER



HARRY FOLSOM BENNETTS

Student council, secretary, '23, executive board, '23; Debate, second team, '23; Clay, president, '23, '24; B. C. P.; Hi-Y; Senior play.



SARA BARRATT  
Orchestra; Reserves.



ARTHUR KENNETH BENNETTS



WARREN ARTHUR BARRETT  
Basketball squad, '23, '24; Student council, alternate; Junior, senior business committee; Clinician; Hi-Y.



RUTH LEONA BERRY  
Freshman forum; Reserves.



KENNETH BARTON  
Football, '22.



ABE BERTMAN



CANDIDATES FOR  
GRADUATION



GLADYS BIGGERS

Assembly program, '23, '24; Glee club; Operetta, '22; Cantata, '22, '23, '24; Reserves.

SARAH MADGE BLACKBURN

Student council; Junior business committee; Twin Arts club; Reserves.

KATHERINE BIRD

ALBERT LUDWIG BLACKFORD  
Engineers; Hi-Y.

LENORE MAE BIRD

Alpha Lyra, girls' chairman; Assembly program; Cantata, '23, '24; Circulo Calderon; Reserves; Music contest.

HELEN MAURINE BLILER

Junior, senior business committee; Round Table; Reserves.

BETTY BIRCH

Basketball, "W," '21, '22; Squad, '23, '24; Baseball, '22; Hockey, '23; Student council, '21, '22, '23; Assembly program; Pundit; Speech Arts; Reserves.

MALCOLM BLISS

Student council, alternate; Round Table, secretary, '23, '24; B. C. P.; Hi-Y; Orchestra.



CANDIDATES FOR  
GRADUATION

STANFORD S. BLOCK

Track, "W," '21, '22, '23, '24;  
Student council, '21; Clionian;  
Hi-Y.

VERNON JOSEPH BOLLER

MARY LINWOOD BLOMEYER

GORDON BOODY

R. O. T. C., captain; Hi-Y.

MAURICE BLOND

EARL BOOTMAN

Circulo Calderon; Spanish play,  
'21, '23, '24; R. O. T. C., second  
lieutenant.

CORA MAE BOLES

FRED LESLIE BOSS  
Hi-Y.



CANDIDATES FOR  
GRADUATION



DAN FRANCIS BRADY  
Basketball, "W," '23, '24; Student council, '24.

GRACE ELIZABETH BREWSTER  
Student council, '23, '24; Pundit.



LEWIS CLEMENTS BRADY

MARION ELIZABETH BRINTON  
Honor student; Student council, '23; Round Table; Circulo Calderon, vice-president, '24, critic, '23; Reserves; Spanish play.



CATHERINE ANN BRANDT  
Student council, alternate, '22; Pundit; Fleur de Lis; Jules Guerin Art club, critic, '24; Reserves, senior secretary.



ARDELLE BRITT  
Honor student; Debate, "W," '24; Student council, '21, '22, executive board, '21; Assembly program; Senior class president; Pundit; Speech Arts, secretary, '23; Reserves, president, '23, '24; Junior business committee.



HOWARD ALBERT BRENNAN  
R. O. T. C., second lieutenant, '24.



STEWART HENDERSON BRITT  
Honor student; Debate, "W," '24 (captain) second team, '23; Senior play; Junior, senior business committee; Junior vice-president; Irving, president, '23, secretary, '23, treasurer, '22; B. C. P.; Hi-Y, cabinets, '21, '22, '23; Crier-Herald staff, '22, '23.

CANDIDATES FOR  
GRADUATION

MARION BROADBERE



MARTHA VIRGINIA BROWNING



ALICE JOSEPHINE BROWN



GEORGIA MARIE BRUCE

Honor student; Hockey, senior squad; Debate, "W," '24; Speech Arts, vice-president, '24; Reserves; Never tardy.



MARGARET ELIZABETH BROWN

Junior business committee; Reserves.



GORDON BUCHNER

Football, '21, "W," '22, '23; Basketball, "W," captain, '24, second team, '21, '23.



MARTHA BALLANTINE BROWN

Honor student; Student council; executive board, '22, '23; Assembly program; Sophomore business committee; Pundit, vice-president, '24, treasurer, '23; Fleur de Lis, vice-president, '23; Reserves.



IRENE ARDELLE BUIS



CANDIDATES FOR  
GRADUATION

ELIZABETH PAYNE BULLARD  
Clionian; Reserves.

MARION ALICE BUTLER  
Circulo Calderon.

AUBREY WARNER BURNHAM

JOHN HANCOCK CALENDAR  
Honor student; Debate, "W."  
'24; Christmas play, '22; Assem-  
bly program; Round Table; En-  
gineers; B. C. P.; Crier-Herald  
staff, '23.

EMMA AMELIA BUSH  
Jules Guerin Art club; Re-  
serves.

GEORGE LUZIER CALVERT  
Assembly program; Hi-Y; Engi-  
neers, mascot, '22.

KNUTE KENNETH BUSSELL  
Engineers.

CHARLOTTE ELIZABETH CALVIN  
Student council, alternate, '24.



CANDIDATES FOR  
GRADUATION



ROBERT LESTER CARPENTER  
Student council, alternate, '21,  
'23.

JOHN WESLEY CELL  
Senior business committee; Clay;  
B. C. P., vice-president.



VIRGIL SAMPSON CARRIER  
Engineers; R. O. T. C.; rifle  
club.

JAMES QUARLES CHAMBERS, JR.  
Honor student; Irving.



PAUL CARROLL  
Track squad.

JOSEPHINE CHAMBERS  
Hockey, '20; Jules Guerin Art  
club; Reserves council club;  
Neither absent nor tardy.



DOROTHY GLADYS CATON  
Senior athletic "W" pin; Base-  
ball, '21, '23, "W," '22, '24; Bas-  
ketball, '23, "W," '22, '24;  
Hockey, '22, "W," '23, '24; Ten-  
nis, '24; B. C. P.; Reserves, cab-  
inet, camp chairman.

STEWART CHANEY  
Student council, '23, '24; Speech  
Arts, president, '24; Senior play;  
Round Table; Alpha Lyra; Can-  
tata, '21, '22.



CANDIDATES FOR  
GRADUATION



GORDON ROSS CHAPMAN  
Clonian, Hi-Y.

JEANETTE LILLIAN COHEN



THOMAS WALKER CHILDS  
Honor student; Sophomore, senior, business committee; Irving, '24; B. C. P.; Clay, '21, '22, '23, vice-president, '22.

AMIS YODER



CHARLES WARNER CLARK

DOROTHY CLAYTON  
Clonian; Reserves.



MARGUERITE NADINE CLARK  
Jules Guerin Art club; Assembly program.

DOROTHY KELLY CLAYTON





CANDIDATES FOR  
GRADUATION

JAMES CLARK COCHRAN  
Circulo Calderon.

LESTER HENRY CONVIRS

AURELIA COFFEY

ROBERT PIERSOL CORN  
Track, '22; Clionian.

ROBERT ALBERT COERVER  
Tennis, '23; Assembly program,  
'23; Clionian.

LETTY MAY COX

MILDRED RUTH COHEN  
Baseball, '21, '22, '23, '24; B. C.  
P.; Reserves.

MABEL VASSAR COX



CANDIDATES FOR  
GRADUATION



DORA EMMA JANE CRAIG  
Cantata:



WALLACE CROWTHER  
Hi-Y.



MARY OLIVE CRAWLEY  
Assembly program; Pundit, sec-  
retary; Reserves, cabinet; B.  
C. P.



EDITH BROWNING CULLEY



ELDA MURIEL CRAWSHAW



MARY ELIZABETH CUNNINGHAM



LAURENCE CRAYNE



ORVILLE LEANDER DAHLSTEN

CANDIDATES FOR  
GRADUATION

MARTHA E. DANIELS

Student council, alternate, '23,  
'24; B. C. P.; Reserves.

JACK DAUGHADAY  
Hi-Y.

MYRTLE IRENE DARNELL  
Reserves.

DANIEL DUANE DEBRUNNER  
Irving; B. C. P.; Engineers.

EDYTHE MAE DAVIS  
Reserves.

GEORGE EUGENE DENNIS  
Student council.

JEANETTE LAUNA DAVIS  
Hockey, '20.

CHARLES FRANCIS DENSFORD  
Debate, second team, '23; Stu-  
dent council, secretary, '23,  
president, '23, '24; Clay; B. C.  
P.; Hi-Y; Assembly program.



CANDIDATES FOR  
GRADUATION



EVERETT LESTER DILLARD  
Track, "W," '22, '23, '24, captain, '24; Student council; Assembly program; B. C. P.; Clonian; Engineers; Hi-Y; Dance orchestra.



FRED WILLIAM DOD  
Football, "W," '23; Track, '22, '23; Basketball, "W," '24; Hi-Y; Orchestra.



MARION TENETTE DILLENBECK  
Student council, executive board; Junior business committee; Christmas play, '23; Assembly program, '23; Round Table, president, '24; vice-president, '24; Jules Guerin Art club, president, '23; Reserves; Honor pin design.



JOHN MAXWELL DOD



WILLIAM ALBERT DINKLAGE  
Student council; Round Table; Engineers; Hi-Y, cabinet, '23.



GARLYN CORA DOHRER  
Speech Arts; Reserves.



JAMES HAROLD DISSMAN  
Christmas play, '23; Assembly program; Cheerleader, '24; Irving, treasurer, '23, president, '24; Hi-Y, senior cabinet; Speech Arts, treasurer; Senior class treasurer; Sophomore, junior, senior business committee; Herald advertising staff, '24.



GERTRUDE DOOLEY  
Student council, vice-president, '24; Christmas play, '23; Assembly program; Pundit; Speech Arts, secretary.

CANDIDATES FOR  
GRADUATION

GRACE DOOLEY

Student council; Debate "W," '24; Christmas play, '22; Senior play; Assembly program; Pundit, treasurer, '24; Speech Arts, secretary, '23; Reserves; Sophomore, senior business committee; Neither absent nor tardy.

MARGARET DUVAL

Student council, alternate, '23, '24.

MILDRED CAROLYN DUER

Red Cross, '21.

PAUL DYSON

Track, "W," '22; Assembly program.

EDWIN ADELMANN DUNN

Junior business committee; Engineers.

MILDRED HARRIET EARHART

B. C. P.; Reserves.

GUY WALDO DUNNINGTON

Honor student; Clay.

ROBERT NEIL EBERSTEIN



CANDIDATES FOR  
GRADUATION



DON EDWARDS  
Student council, '23.

LUCILLE ELLIOTT  
Reserves.



WILLIAM CHARLES EDWARDS  
Football, second team, '21, '22;  
Basketball, second team, '22; Ir-  
ving; Hi-Y.

GEORGE CLARK ELLIS  
Track, '20, '23; Crier staff, '19.



MARGARET LUCILLE ELLEDGE  
Honor student; Assembly pro-  
gram; Sophomore business com-  
mittee; Cantata, '22, '23, '24;  
Reserves; Alpha Lyra, presi-  
dent, '23.

MARGARET LOUISE EMMERT  
Senior business committee; Cli-  
onian; Jules Guerin Art club.



ALFRED L. ELLET

ROSE D. ENGLEMAN  
Baseball, '20; Basketball, '20;  
Hockey, "W" (captain), '20;  
Student council, alternate; Re-  
serves.



CANDIDATES FOR  
GRADUATION

ELMER FREDERICK ERICKSON  
Engineers; R. O. T. C., crack  
company, '24.

LESLIE PAUL FISHER  
Football, "W," '23; Assembly pro-  
gram; Hi-Y, secretary.

ELBERTA VIRGINIA EVERHART

MARIE FRANCES FLANAGAN

VERNA LEORA FERREL

CHARLOTTE EVELYN FORRESTER  
Student council, alternate; Jun-  
ior business committee; Pundit;  
Speech Arts.

MARJORIE JANET FIDLAR  
Reserves.

JAY GARNETT FOWLER  
Assembly program, '22, '23, '24;  
Cantata, '22, '23, '24; Alpha  
Lyra; Operetta, '21, '22, '23.



CANDIDATES FOR  
GRADUATION

VERA MARGUERITE FRAZELL

Jules Guerin Art club, president, '24, vice-president, '23; Round Table; Reserves; Circulo Calderon; Spanish play; Herald cover design, division pages.

SADIE FRIEDSON  
Twin Arts club.

VIVIAN MARGARET FREDERICK

JOHN HENRY FRY

Track, "W," '22, '23, '24; Assembly program; Sophomore business committee; Clay; Civics club; Hi-Y.

MARION LOUISE FREED

MILDRED IRENE FULTON

CECELIA ANNETTE FRIEDMAN

Student council, '22, '23; Twin Arts club, '23; Reserves.

ROBERT LOCKHART GAGE





CANDIDATES FOR  
GRADUATION

MABEL MARIE GAMACE

Circulo Ca'deron; Reserves; Glee club; Spanish play, '22, '23, '24; Operetta, '24; Cantata, '24; Assembly program; Freshman forum.

VELDA MERCEDES GEBHARD

Honor student; Student council; Sophomore, junior, senior business committee; Speech Arts, critic, '24; Oration contest; Reserves.

HAROLD HANVEY GANGE

Student council, executive board; Clionian, critic; B. C. P.; Engineers; Cheer leader, '24; Herald advertising staff.

FRED GEISENBERGER

Student council, alternate; B. C. P., secretary, '23.

IRENE ERNESTINE GARDNER

MELVIN JAMES GENTRY

Student council; Assembly program; Alpha Lyra; R. O. T. C., first sergeant; Alpha Lyra; Cantata, '22, '23, '24; Music contest, "W."

MIRIAM GARST

Debate, "W," '24; Clionian; B. C. P.; Reserves.

LYLE FREDERICK GIBBON  
Engineers; Hi-Y.



CANDIDATES FOR  
GRADUATION



OLIVER GLAUBER



MYRON RECK GRAHAM  
Student council; Hi-Y.



IRENE GOLDBERG  
Assembly program; Alpha Lyra;  
Cantata, '24; Operetta, '23.



THEODORE WILLIAM GRANT



GERTRUDE IRENE GORDON



LUCILLE ELOUISE GREENE  
Reserves.



LUCILLE GRACE



JEANETTE EDITH GREENMAN

CANDIDATES FOR  
GRADUATION

ELWIN ROBERT GRIFFITH



DOROTHY PEARL HALBERT

Honor student; Baseball, Basketball; Jules Guerin Art club; Reserves.



ALICE GROENDYCKE

Honor student; Student council, alternate, '23, '24; Assembly program; Jules Guerin Art club, vice-president; Round Table; Reserves; Spanish play, '24; Herald division page.



ELEANOR HALL

Student council; Christmas play, '23; Senior play; Assembly program; Sophomore, senior business committee; Round Table; vice-president, '23; Circulo Calderon; Speech Arts; Reserves; Spanish play, '22, '23.



JOSEPH MURRAY GUERRY

Honor student; Track, "W," '22, '23, '24; Student council; Sophomore business committee; Clonian.



MARJORIE REBECCA HALL

Junior, senior business committee; Jules Guerin Art club; Fleur de Lis; Reserves.



HARMON EDWARD GUISINGER

Football, second team, '21; Track, "W," '22, '23, '24; Student council, alternate; Engineers; Hi-Y.



MARY EVELYN HALL

Christmas play, '22; Speech Arts.



CANDIDATES FOR  
GRADUATION



RACHEL ALTHEA HAMILTON  
Student council; Jules Guerin  
Art club, secretary, '24.

FLORENCE MARIE HARNDEN  
Honor student; Student council,  
'21, '22, '23; Assembly program;  
Junior, senior business commit-  
tee; Cantata, '23; Pundit; B. C.  
P.; Fleur de Lis; Reserves, jun-  
ior secretary; Crier-Herald staff,  
'22, '23, '24.

LAVINIA BERNICE HAMILTON  
Assembly program; Senior busi-  
ness committee; Cantata, '23; B.  
C. P.; Alpha Lyra; Freshman  
forum, vice-president.

S. BERRY HAUG  
Student council, '22, '23, alter-  
nate, '24; Junior business com-  
mittee; Clionian.

LELITA GRACE HARGUS

LUCILLE HAWKINS  
Assembly program; Cantata; Al-  
pha Lyra, '23; Reserves.

RICHARD LONG HARKNESS  
Track, "W," '23; Junior business  
committee, alternate; Round Ta-  
ble; Hi-Y; R. O. T. C., crack  
company, '22, crack platoon, '22,  
crack squad, '22.

ESTHER CHRISTINE HAWKINSON  
Circulo Calderon; Reserves.



CANDIDATES FOR  
GRADUATION

RALPH KELLOGG HEATH  
R. O. T. C., second lieutenant;  
rifle team, '22, '23.

WILLIAM REED HENDERSON  
Tennis, '23.

HENRY ALBERT HELLMAN  
Track, '23, '24.

LOUISE VERNA HILES  
Reserves.

MARGARET HELMAN  
Clionian; Speech Arts; Reserves.

VIRGINIA FRANCES HINCHMAN  
Reserves.

FLOYD KENNETH HELSBY

J. FRED HIPPLE  
Track squad, '24; Student coun-  
cil, alternate; Hi-Y.



CANDIDATES FOR  
GRADUATION



MARY FAY HISEY

WILLIAM COLE HOGIN  
Student council; Round Table,  
treasurer; Hi-Y; Engineers.



HOWARD HISTED

Assembly program; Engineers,  
vice-president; Irving; R. O. T.  
C., crack platoon, '22; Dance or-  
chestra.

HELEN GLENN HOLLENBECK  
Student council; Junior business  
committee; Never absent.

DOROTHEA CLARA HOCHLAND

VERA A. HOLM  
Reserves; Red Cross class, '21.

MARY LUCILLE HODGE

Baseball, '21; Student council;  
Senior business committee; Cli-  
onian; Reserves.

JESSIE KATHLEEN HORNER

CANDIDATES FOR  
GRADUATION

ELIZABETH FRANCES HORTON

MARGARET GILBERTA HUHN  
Student council; Circulo Calderon; Reserves.

RAYMOND LEE HUBER

NELLIE FRANCES HULL  
Reserves.

LUCILLE ETHEL HUFF  
Reserves.

MARY ELIZABETH HUNTER  
Honor student; Fleur de Lis.

LILLIAN HUGHES

Honor student; Assembly program; Cantata, '24; Circulo Calderon, secretary; Reserves; Glee club; Spanish play, '24.

SUNDA VIOLA HUR  
Student council.



CANDIDATES FOR GRADUATION



ALGOT RICHARD JACKSON  
Hi-Y.

BETTY JAUDON



KATHRYN MURRAY JACKSON  
Student council, alternate; Cir-  
culo Calderon; Jules Guerin Art  
club; Reserves; Spanish play,  
'21.

MARY ANNE JAUDON  
Reserves.



VIRGINIA GERALDINE JACKSON  
Fleur de Lis; Reserves.

RAYMOND JOSEPH JEDLICKA



GRACE ELIZABETH JAQUE  
Basketball, '22; Hockey, '21, '23;  
Student council; Assembly pro-  
gram; Circulo Calderon; Spanish  
play, '24; Disarmament essay,  
second prize, '23.

ALBERTA LUELLA JOHNSON





CANDIDATES FOR  
GRADUATION

MIRIAM ELSIE JOHNSON  
Reserves.

JENNIE JURLOW

ROSE EVELYN JOHNSON  
Junior business committee.

NENA JURLOW  
Honor student; Basketball, "W,"  
'21.

LOIS JO JOHNSTON  
Student council, alternate; Re-  
serves.

DOROTHY LOUISE KALHORN

JOHN BREWER JOLLEY  
Christmas play, '22; Assembly  
program; Student council;  
Round Table, president, '24, vice-  
president, '23; R. O. T. C., cap-  
tain; Hi-Y, president, secretary,  
treasurer; B. C. P., treasurer;  
Engineers.

VERNON BENJAMIN KASSEBAUM  
Student council, treasurer, '24,  
executive board, '23; Senior class  
secretary; Junior, senior business  
committee; Clay, treasurer, '23,  
secretary, '24; B. C. P.; Circulo  
Calderon; Hi-Y, vice-president,  
'24, freshman, sophomore, junior,  
senior, cabinets; Spanish play,  
'21, '22; Dance orchestra.

CANDIDATES FOR  
GRADUATION



SIDNEY EARL KATZ

GEORGE EVERARD KERR

Assembly program; Cantata, '22, '23; Operetta, '22, '23; Clionian; Alpha Lyra; Hi-Y.



FRED WILLIAM KELLY

Honor student; Christmas play, '22; Senior play; Student council; Assembly program; Sophomore business committee; Clionian, president, '24, critic, '23; Speech Arts, vice-president, '21; Crier-Herald staff, '24; Never tardy.



CYRIL EVELYN KEYES



DOROTHY LEE KEMPER

Student council; Pundit, secretary; Reserves; Circulo Calderon; Cantata, '23, '24; Glee club.



WARD BELDEN KIRK

Track, "W," '23, '24; Dance orchestra.



REYNOLDS HENRY KERNBERGER

Track, '22, '23, '24.



LUCILLE PATRICIA KLEIN

Honor student; B. C. P.

CANDIDATES FOR  
GRADUATION

STANLEY KNIGHT



KATHERINE FLORENCE KOHR  
Senior athletic "W" pin; Baseball, "W," '22, '23, '24; Hockey, "W," '23, '24; Basketball, "W," '23, '24; Tennis, "W," '24; Student council, alternate; Jules Guerin Art club; Reserves.



FRANCES ELIZABETH KNOP  
Reserves.



DOROTHY DUDLEY KREIDER  
Student council, alternate; Circulo Calderon; Reserves.



ROBERT LEO KOEHLER  
Circulo Calderon.



ROSALIE LOUISE KRUSE  
Reserves.



MARY LOUISE KOHLER  
Hockey, "W," '23; Student council; Circulo Calderon, treasurer; Spanish play, '23, '24; Reserves.



JOSEPH SCOTT LAFFERTY  
Honor student; Student council, '22, '23, '24, executive board, '23; Sophomore, senior business committee; Irving, vice-president, '24, secretary, '23; Circulo Calderon, president, '24, vice-president, '23, critic, '23; Spanish play, '22, '23; Crier-Herald staff, '24.



CANDIDATES FOR  
GRADUATION



LLOYD WILMOTT LAING

CALEB BARRETT LANING  
Student council, alternate, '22;  
Junior, senior business committee;  
Round Table; Engineers,  
critic, '23, '24.

RALPH WILEY CLAIR LAMBERT

ALICE PETER LANTERMAN  
Honor student; Baseball, "W,"  
'21, '22; Basketball, "W," '21,  
'22, '24; Hockey, "W," '23; Student  
council, alternate, '23, '24;  
Pundit; Reserves.

LOREN JAMES LAMBERTH

HELEN ELIZABETH LARSON  
Baseball, '23, '24; Basketball,  
'24; Hockey, "W," '23; Reserves.

DOROTHY MAE LANDCRAFT

DAVID EDWARD LASHLEY  
Student council; R. O. T. C.,  
lieutenant, '23, '24; Rifle club,  
'24, crack squad, platoon, company,  
'23.



CANDIDATES FOR  
GRADUATION

HILDA MAE LAWRIE

Honor student; Basketball, '20; Assembly program; Student council; Round Table; B. C. P.; Reserves.

JEROME S. LIEBERMAN, JR.

Honor student; Debate, "W," '24, second team, '23; Student council, executive board, '22; Sophomore business committee; Clay, vice-president, '24, secretary, '23; B. C. P., president, '24; Fleur de Lis, secretary, '22; Hi-Y; Civics club; Crier-Herald advertising staff, '24.

MARGERY RAUB LAWRIE

Student council; Baseball, '21, '22; Basketball, '21, '22; Round Table; Jules Guerin Art club; Reserves; Orchestra.

JUANITA NADINE LIGHTNER

Honor student; Round Table; Circulo Calderon, president, '24, vice-president, '23; Reserves; Spanish play, '21, '22, '23.

EDWARD BADGER LEWIS

Hi-Y.

JOHN HAROLD LIND

Student council, alternate; Assembly program; R. O. T. C., major, captain, '24, first lieutenant, rifle club, crack company, '22; Hearst rifle trophy, sharpshooter; Round Table.

ALBERT B. LIEBERMAN, JR.

Student council; Assembly program; Clay, critic; Engineers; Rotary Club Essay; Track, '24.

DEWARD B. LINDSEY

Clionian; Hi-Y; R. O. T. C., lieutenant, rifle club, crack platoon, '21, '22, '23.



CANDIDATES FOR  
GRADUATION



CATHERINE LIPPINCOTT

Basketball, '23, '24; Baseball, '23, '24; Hockey, "W," '22, '23; Reserves.

JEAN SACHS LOEBENSTEIN  
Student council; Reserves.

LEO HARN S LIPSCOMB

Football, "W," '22; Basketball, '22; Student council, '24; Clionian; Circulo Calderon; Hi-Y, Sophomore, junior, senior cabinets.

PERCY SAMUEL LORIE, JR.

MARGARET ELIZABETH LISH

Twin Arts club, vice-president.

LAURA FLOY LUKER  
Reserves.

JAMES M. LLYWELYN

Football, second team, '23; Student council, '21.

WANDA VIVIAN LUKER



CANDIDATES FOR  
GRADUATION

MARIAN HELEN LYON  
Fleur de Lis; Reserves.



HARRIET McCLURE

Cadet sponsor major, '24; Junior class president; Assembly program; Sophomore, junior, senior business committee; Pundit, president, '23, secretary, '23, critic, '22; Fleur de Lis; Speech Arts; Reserves; Crier-Herald staff, '23, '24.



LAVONA MAXINE LYONS  
Student council, alternate, '22, '23; Assembly program; Alpha Lyra; Operetta, '24; Cantata, '23, '24; Reserves.



ROBERT McDONALD McCrum  
Student council; Circulo Calderon; Engineers; Hi-Y.



THOMAS IRVING LYONS  
Hi-Y.



KATHERINE ELIZABETH YEACER



LEONE LUTZ



RUTH LOIS MCGEEHAN  
Hockey, '21; Junior business committee; Jules Guerin Art club.



CANDIDATES FOR  
GRADUATION

NELLIE ELIZABETH MCKEEVER  
Reserves.

HELEN LOUISE MCPHERSON

ROBERT SEATON MCKENZIE  
Clonian; B. C. P.; Hi-Y.

MARGARET ELIZABETH MCQUINN  
Baseball, '22, '23; Basketball,  
'23; Hockey, '22; Tennis, '23;  
Student council; Assembly pro-  
gram; Jules Guerin Art club;  
Reserves.

JUNE MCLAUGHLIN  
Honor student; Debate, "W," '24  
(captain); Student council,  
Christmas play, '22; Senior play;  
Assembly program; Clonian,  
vice-president; Speech Arts,  
president, '23, secretary, '22; Re-  
serves.

ALICE MAY MACMAHON  
Circulo Calderon, treasurer, '24;  
Spanish play, '21, '22, '23.

RAY MANCHESTER McMULLEN  
Hi-Y; R. O. T. C., lieutenant.

SYLVIA MADDEN  
Reserves.





CANDIDATES FOR  
GRADUATION

RUSSELL MAGNUSON

NANNIE DORCAS MARSHALL  
Baseball, '21, "W," '22, '23;  
Hockey, '22; Reserves.

LEWIS HUGHES MAGRUDER

Student council; Junior business  
committee; Round Table; Hi-Y.

HAROLD CHRISTIAN MARTENS  
Junior business committee; R. O.  
T. C., first lieutenant.

HELEN MARSH  
Hockey, '23.

GEORGE MARTIN  
Student council; Junior busi-  
ness committee; Hi-Y.

JAMES HARVEY MARSH  
Football, second team, '22.

LUCILLE MASONER



CANDIDATES FOR  
GRADUATION



ELAINE MOLIN MEIER

Honor student; Student council, '22, '23, '24; Round Table; Jules Guerin Art club, Herald division pages, '23, '24.

RUTH ELIZABETH MINER

JULIA DONELLE MERRILL

DOROTHY MARIE MOEBUS

Assembly program; Jules Guerin Art club, treasurer, '23; Reserves.

BETTY ROSS MILLER

PAUL MCGREW MOFFETT

Assembly program; Clay; Engineers, treasurer, '20.

DOROTHY ELIZABETH MILLER

Assembly program; Cantata, '23; Alpha Lyra; Reserves.

AGNES RUTH MOORE

Hockey, '20; Clionian; Reserves.



CANDIDATES FOR  
GRADUATION

ALLAN MOORE

Student council, executive board, '24; Junior business committee; Irving, secretary, '24; B. C. P.; Hi-Y, cabinets, '22, '23, '24, treasurer, '24; Spanish play.

EVA MARIE MYERS

Christmas play, '22; Circulo Calderon.

JOHN ZENAS MORROW

JOHN EDWARD MYERS

Track, "W." '22, '23, '24; Student council.

FLORENCE IMCENE MOTHERSBAUGH  
Honor student; Twin Arts club.

FORD R. NELSON

Senior business committee; Round Table, treasurer; Engineers; Hi-Y.

JOHN ROGER MURPHY

Football, '22; Track, '21, '22, '23, '24; Student council, alternate; Assembly program; Junior business committee; Clonian; Hi-Y.

LYNDON ALBIN NELSON



CANDIDATES FOR  
GRADUATION



VIOLET ROSELLA NEWBERRY

JEAN NORBERG

GILBERT NICHOLS

VIRGINIA CATHERINE NORLING

MARY DRUCILLA NICHOLS

Honor student; Hockey, freshman squad; Student council; Assembly program; Sophomore business committee; Pundit, president, '24, treasurer, '21, '22, vice-president, '23; Fleur de Lis, secretary, '23; Reserves, cabinet inter-council; Never tardy.

NADINE NORMAN  
Circulo Calderon.

WINSTON KOLLER NIX  
Cantata, '23.

GEORGE CUMBERLAND NORTON



CANDIDATES FOR  
GRADUATION



PHILIP H. NORVELL  
Student Council; Junior business  
committee.

HELEN MARGARET O'HARA  
Circulo Calderon; Reserves.



MABEL CONSTANCE NUCKLES  
Honor student; Debate, "W,"  
'24; Christmas play, '23; Senior  
business committee; Clonian,  
secretary; Speech Arts; Re-  
serves.

WILLIAM O'REILLY



WILLIAM EDWARD O'DONNELL  
Circulo Calderon; Cantata; Or-  
chestra.

WILLIAM OBER



JOSEPH GRETON O'GORMAN  
Honor student; Irving.

LESTER EVERETT OBERHOLTZ  
R. O. T. C., lieutenant, crack  
company, crack platoon, crack  
squad.



CANDIDATES FOR  
GRADUATION



ALBERTA OLIVER  
Hockey; Twin Arts club.



AUBREY SIDNEY OWEN



MAISEE ROSINA OLIVER



GLADYS MAE PAGE



HELEN MARIE OLSEN



MARGARET PAGE  
Student council, '23; Junior  
business committee; Clonian.



PHILIP RANSOM OSBORN  
Student council; Assembly pro-  
gram; Round Table; Engineers;  
Hi-Y; R. O. T. C., second lieu-  
tenant.



ELIZABETH PARKER  
Never tardy.

CANDIDATES FOR  
GRADUATION

ARDELLE BESSIE PARSILL  
Jules Guerin Art club; Reserves.

VERA MARIE PEARSON  
Assembly program; Cantata;  
Circulo Calderon; Alpha Lyra.

JERRY CHRIS PATE  
R. O. T. C., crack company and  
platoon, '22, sergeant, '24.

OPAL FAY PEASE

RALPH HAVEN PATT  
Clay; Hi-Y.

FRED PIERSON

FRANK C. PAYNE  
Student council; Hi-Y.

JAMES CALVERT PIPER  
Student council, alternate; Jun-  
ior business committee; Cantata;  
Irving; Circulo Calderon; Engi-  
neers; Alpha Lyra.



CANDIDATES FOR  
GRADUATION



KATHERINE JANE PIPKIN

Senior athletic "W" pin; Baseball, "W," '21, '22, '23; Basketball, "W," '22, '23, '24; Student council; Senior business committee; Pundit, vice-president, treasurer; B. C. P., vice-president; Reserves, F. S. H. scholarship.

LEE ROBERT POWELL

Debate, "W," '24; Student council; Assembly program; Clay; Hi-Y.



SUE PLATT

DOROTHY ESTELLA PURCELL

Student council, alternate; Round Table; Circulo Calderon.



SAMUEL H. POLLOCK

ALICE SELMA RABINOWITZ

Honor student; Circulo Calderon; Spanish play.



ADELAIDE PLUMB

ARTHUR D. RAGSDALE





CANDIDATES FOR  
GRADUATION

HELEN ESTHER RAINES  
Circulo Calderon; Spanish play.

JEANETTE REICHER  
Student council; Assembly pro-  
gram; Cantata; B. C. P.; Alpha  
Lyra.

ROBERT C. RAY  
Football, "W," '23; Round  
Table.

MARVEN REITZ

MYRTLE EULALIA REAM  
Never tardy.

RALPH APPERSON RENICK  
Student council; Cantata; Glee  
club; R. O. T. C., captain, first  
lieutenant.

CHARLES WESLEY REED, JR.

BEULAH CATHERINE RENKEN  
Never tardy.



CANDIDATES FOR  
GRADUATION



EULAH MARGARET RENKEN  
Never tardy.



BAITY THEODORE RIGG  
Track, '23



BYRON ALBERT REXROTH  
Honor student; Clay; Engineers,  
secretary, '23.



GERTRUDE MARGERY RITZEN  
Alpha Lyra; Cantata.



KATE ELENOR REYNOLDS  
Student council; Round Table;  
Fleur de Lis.



RUTH MYRTLE ROBEEN  
Tennis, '23, "W," '24; Hockey,  
'21; '22, '24, "W," '23; Basket-  
ball, '21, '22, '23, '24; Baseball,  
'21, '22, '23, '24; Reserves.



NELLE MAE RICHARDS  
Assembly program; Cantata; Al-  
pha Lyra, president; Reserves;  
Operetta; Music "W," '23.



HAROLD S. ROBERTS  
Student council, senior execu-  
tive board; Clionian; Hi-Y.

CANDIDATES FOR  
GRADUATION

BURRITT ROBINSON  
R. O. T. C., staff sergeant.

GENELL RUTTER

EDITH MILDRED ROBINSON  
Baseball, '22, '23; Basketball,  
'24; Hockey, '22, "W," '23; B. C.  
P.; Reserves.

THOMAS DUNCAN SAMUEL  
Student council; Engineers;  
Hi-Y; Never absent nor tardy.

DAVID RICHMOND ROSS

EVELYN MARGARET SAWTELLE

CLARENCE HAROLD RUSSELL

WILLIAM PLATT SAYRE  
Student council; Junior, senior  
business committee; Round  
Table.



CANDIDATES FOR  
GRADUATION



JAMES MACAULEY SCALES

Student council; Round Table, treasurer; Hi-Y; R. O. T. C., major, '24, captain, '23, second lieutenant, '22, crack platoon, crack company, '20, '21.

CHARLES SCHNIDER

R. O. T. C., second lieutenant, rifle team, sharpshooter.



PARK OLIVER SCHAEFER  
Circulo Calderon



HELEN DOROTHY SCHOLLEE  
Student council; Reserves.



WILLIAM CHARLES SCHILLER  
Assembly program.



LILLIAN SCHROLL

Junior, senior business committee.



HENRIETTA NELLE SCHMITT  
Honor student; Reserves; Circulo Calderon; Twin Arts club.



DOROTHY ROSE SEAGER

Assembly program; Cantata; Glee club; Reserves.

CANDIDATES FOR  
GRADUATION

VIRGINIA SEELY  
Reserves.

AGNES MARGARET SHEPHERD  
Baseball, '21, '22; Basketball,  
'22, '23; Hockey, '22, '23; Stu-  
dent council, executive board;  
Reserves, sophomore secretary.

MINNIE NORTON SEIP  
Reserves.

RUTH SHEUERMAN  
Honor student; Student council;  
B. C. P.; Clionian.

LEWIS SELF  
Hi-Y.

ROXY MILDRED SHIDELER

ZELMA SHAPIRO

WINONA SHIDELER  
Fleur de Lis; Speech Arts,  
Reserves; Christmas play, '23.



CANDIDATES FOR  
GRADUATION



JOHN LAMAR SHOUSE, JR.  
Honor student; Clionian; Hi-Y.

MARCELLA MARY SLEZAK



EDNA LILLIAN SHUCK

LUCILLE MAY SLOMAN



WILLIAM ALBERT SLADEK  
Student council, alternate; Assembly program; Alpha Lyra, vice-president, '24; R. O. T. C., sergeant, Hearst Trophy rifle team, '23, rifle team, crack squad, crack platoon, crack company, '23; Cantata; Operetta, '24; Music "W."

HELEN SMITH



CLARICE MARIE SLATON  
Student council, alternate; Circulo Calderon; Reserves; Spanish play, '24.

SIDNEY SMITH

Assembly program; Pundit; Speech Arts; Fleur de Lis; Reserves.



CANDIDATES FOR  
GRADUATION

SELMA SONIN

Christmas play, '22; Assembly program; Cantata; Clonian; Speech Arts; Glee club.

LAWRENCE EWING STEVENSON

Football, "W," '22, '23, captain, '23; Junior class sergeant-at-arms; Senior class vice-president; Assembly program; Junior, senior business committee; Clonian; Hi-Y, president, junior cabinet; Circulo Calderon; Spanish play, '22.

FREDERICK HOBERG SORENSEN  
Hi-Y.

STERLING HOWARD STEWART  
Student council.

SARA REBECCA STALEY

Honor student; Student council; Sophomore business committee; Circulo Calderon; Spanish play.

DOROTHY JANE STITH

LEONARD LEE STEARNS

HELEN VALORA STROHM  
Jules Guerin Art club.



CANDIDATES FOR  
GRADUATION



CORRINE E. STUART  
Student council, alternate; Round  
Table; Reserves.

HELEN LUCILE SUDDARTH  
Student council, alternate;  
Round Table; Reserves.

MILDRED HANNAH STUART  
Assembly program; Round Ta-  
ble; Alpha Lyra; Reserves.

HELEN PAULINE SULZBACHER  
Circulo Calderon.

KENNETH BOYER STURDIVANT

PAUL J. SWEAZEA

BETTY JEAN SUDDARTH  
Student council; Round Table;  
Reserves.

RALPH POWELL SWOFFORD  
Irving.





CANDIDATES FOR  
GRADUATION

HUGH TAYLOR

Honor student; Student council; Assembly program; Sophomore, junior, senior business committee; Senior class sergeant-at-arms; Clionian, president, secretary; Speech Arts; Fleur de Lis; Hi-Y; Dance orchestra; Crier-Herald staff, '24.

JACK TERRELL  
Student council.

NEIL MADDISON TAYLOR

FREDERICK WILLIAM TESCH

HELEN ANNA TEACHENOR

WILLIAM PHILIP TEUSCHER  
Debate, "W," '23, second team, '22; Student council, alternate; Irving, critic; B. C. P.; Hi-Y; Cheerleader, '22, '23.

BERNICE TEED

Student council; Twin Arts; Jules Guerin Art club; Journal-Post ad prize.

WILLIAM KENNETH TEVIS



CANDIDATES FOR  
GRADUATION

CHARLOTTE ISABELLE THOMPSON  
B. C. P.



CHESTER DAVID TOPPEL  
Engineers; Hi-Y.



LUTHER GLENN THOMPSON  
R. O. T. C., lieutenant; Hi-Y.



AMY LANDON TOWNSEND



MARY CECILIA TIERNEY



FLORENCE ANN TRESHADDING  
Reserves.



CARL ELBERT TIMMONS  
Assembly program; Cantata; Alpha Lyra; Operetta.



GENE BONNYLIN TRUITT  
Honor student; Hockey, '20; Student council; Clionian, vice-president, secretary; Fleur de Lis.



CANDIDATES FOR  
GRADUATION

DOROTHY HELEN TRUSTY

Honor student; Student council; Assembly program; Clionian; Jules Guerin Art club, treasurer, critic; Reserves; Oration contest, second prize.

GILBERT HARPER TURNER

Student council; Round Table; Engineers; Hi-Y; Spanish play.

MARY BEATRICE TUCKER

MALCOLM ERNEST TWIDALE

ALTHEA RUTH TURGEON

CLARISSA HELEN ULAND  
Basketball, '21; Glee club.

CHAPMAN TURNER

Student council; R. O. T. C., second lieutenant, staff sergeant, crack company, crack platoon, '22, '23, '24.

DANIEL JAMES UHRIG

Student council; B. C. P.; Round Table; Hi-Y.



CANDIDATES FOR  
GRADUATION



DOROTHY ELIZABETH ULLRICH  
Jules Guerin Art club; Re-  
serves.

IRENE JOSEPHINE VAN EVERA  
Assembly program; Cantata;  
Clonian; Speech Arts; Alpha  
Lyra; Reserves.



EDITH ALICE VAIL  
Assembly program; Orchestra.

GEORGE L. VINING



VIRGINIA RUTH VANDER VEEN

ELVIN STAVER VOIGTS  
Track, '23; Clay; Engineers,  
president, sergeant-at-arms; Hi-Y.



JAYNEE ELIZABETH VAN DUSEN  
Jules Guerin Art club.

AUDLEY LEONARD VONCK  
Clay; Hi-Y.



CANDIDATES FOR  
GRADUATION

CARL DEWITT VROOMAN

LORENE JANE WALLENSTROM  
Baseball, '21, '22; Hockey, '20;  
Student council.

FRANK WACHTER

Football, "W," '22, '23; Student  
council; Junior business commit-  
tee; Irving.

SYLVIA WALTERS  
Reserves.

NEWELL R. WADDINGTON

HAROLD SAMUEL WARD

JOHN DONALDSON WAGNER  
Student council; Hi-Y.

VIRGINIA EMERSON WARD



CANDIDATES FOR  
GRADUATION



CHARLES FREDERICK WARNER  
Assembly program; Junior, senior business committee; Clay; B. C. P.; Hi-Y.

MARION GUY WATTS



THOMAS RICHARD WARNER  
Hi-Y.

EVERETT PINE WEATHERLY  
Honor student; Debate, "W," '24; Christmas play, '22; Clon-ian; B. C. P.; Crier Advertising staff, '23, manager, '24.



CLARA LOUISE WASSON  
Never tardy.

JAMES ALDRUE WEATHERS



JAMES WILLIAM WATTS  
Student council, executive board; Sophomore business committee; Orchestra.

ERNA PAULINE WEDEMEYER  
Hockey, "W," '23; Circulo Calderon.



CANDIDATES FOR  
GRADUATION

ILENE LOVE WEISSINGER

Round Table; B. C. P.; Reserves.

HOBART MACRAE WEST

Student council; Assembly program; Alpha Lyra, treasurer, '24; Operetta; R. O. T. C., first lieutenant, rifle teams (Hearst trophy, seventh corps area, interscholastic, city championship), crack company, '21, '22, '23, crack platoon, '22, '23, crack squad, expert rifleman.

CORA LEE WELCH

Orchestra.

JOHN HENRY WHEELER

Christmas play, '22; Hi-Y.

MIRIAM WENHAM

PAUL WHITCRAFT

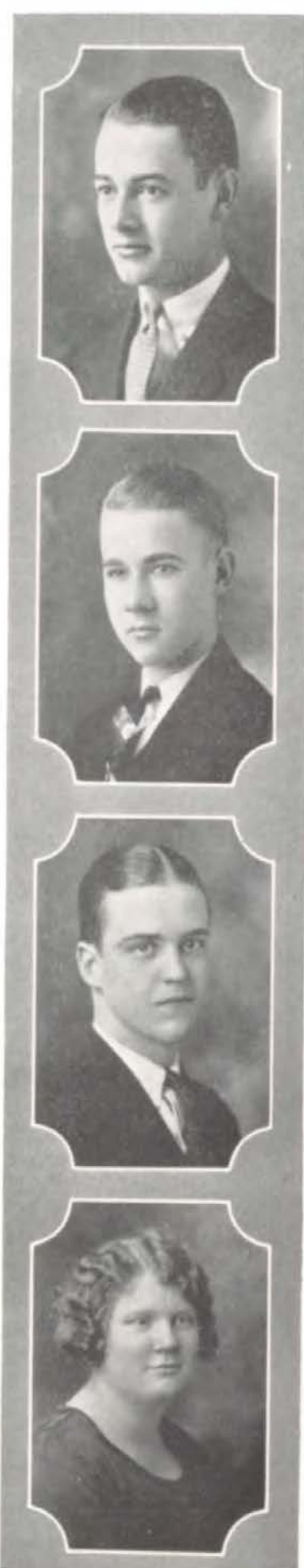
Track, "W," '22, '23, '24; Assembly program; Student council, '23; Clonian; Hi-Y.

ESTELLA FRANCES WEST

Circulo Calderon; Reserves; Spanish play.

CLEVA MCCOY WHITESIDE

Reserves.



CANDIDATES FOR  
GRADUATION



JOHN ROBERT WHITE  
Hi-Y; Sophomore, junior cabinets; R. O. T. C., second lieutenant, '24, first sergeant.

MYNA ELIZABETH WILSON



LEAH WHITTINGTON  
Honor student; Student council; Round Table.

OPAL EMILY WILSON



HELEN MACLEAN WIGHT

RENA FERN WILSON



MARGARET ELIZABETH WILKINS

ROBERT LEE WILSON  
Honor student; Round Table.





CANDIDATES FOR  
GRADUATION

WALTER LEWIS WILSON, JR.

Student council; Sophomore business committee; Clonian; Engineers, treasurer, '24.

EDWARD CHARLES WOLF

Football, "W," '23, squad, '21; Basketball, '21; Student council; Junior business committee.

ZENITH WILMOT

Reserves.

RICHARD RUSSELL WOLFE

Student council; Round Table; Engineers; R. O. T. C., captain, crack company, '23, '24.

IRMA MAY WITHERUP

Senior athletic "W" pen; Baseball, "W," '22, '23; Basketball, ball, "W," '23 (captain); Freshman forum.

HARRY VERNON WOOD

Student council; Hi-Y.

KATHERYN ALICE WOLCOTT

Speech Arts; Reserves.

HAROLD WOODHEAD

Hi-Y.



CANDIDATES FOR  
GRADUATION

HYCEL LEE WOODRUFF



CANDIDATES FOR  
GRADUATION

HELEN LOUISE WOODSMALL

Honor student; Debate, "W," '24; Student council, vice-president, '23; Assembly program; Pundit, critic, '23; B. C. P., president; Reserves, secretary, '24.

JAMES MARCUS WRIGHT  
Student council; Junior, senior business committee; Round Table; Junior class treasurer; Hi-Y.

HARRY EUGENE YOUART  
Track, '20.

## Junior Officers



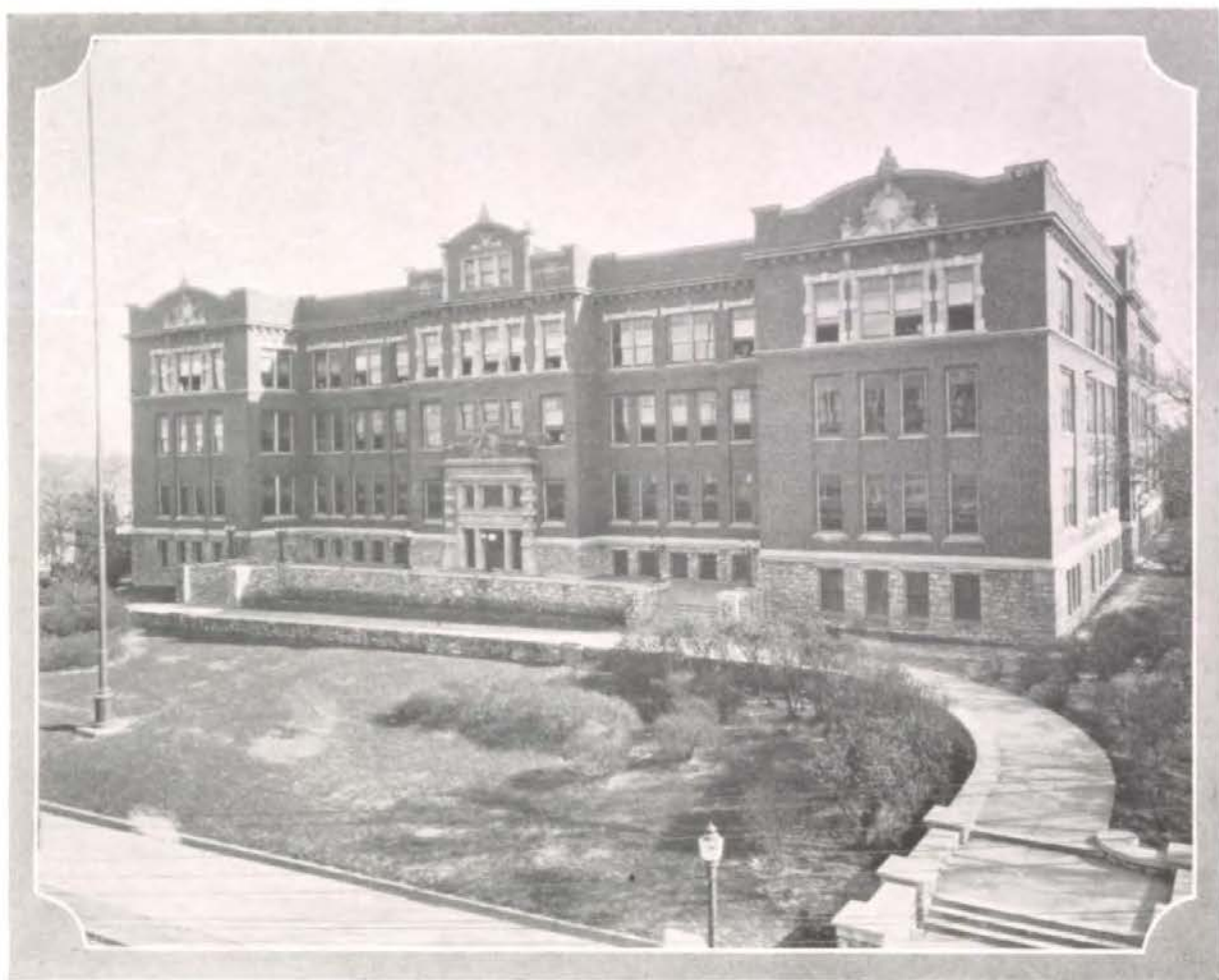
MEDSKER CHRISTENSEN ..... *President*  
 JUSTIN ROACH ..... *Vice-President*  
 MARY ELLEN HUBBARD ..... *Secretary*  
 THOMAS CARROLL ..... *Treasurer*  
 DOROTHY SHIELDS ..... *Sergeant-at-Arms*

Although the class of 1925 entered Westport as sophomores, the knowledge and experience which they had accumulated as freshmen in Junior high school soon enabled them to take an active and useful part in the life of the school. Upper classmen gave the newcomers a cordial welcome and the teachers found that they were intelligent and well behaved, hence their high school career had a very happy beginning.

Many juniors are included among the immortals on the honor roll; members of the class have distinguished themselves in all branches of athletics and their voices are heard whenever the glee club sings. The melodious strains of the orchestra are augmented by Junior musicians and two members of the class were soloists in the music contest. The student council, the debate teams and dramatics all have been strengthened by talent contributed by our illustrious class. To mention one particular distinction, the first prize offered by the Sons of the Revolution in the annual essay contest was won by a Junior girl.

The preferential ballot system, an innovation that is destined to become a permanent feature of class elections, was introduced by the juniors this year in their class election. And then there was the class mixer.

We have submitted our evidence to a candid world and now we call upon the faculty, the departing seniors and the sophomore class to bear witness that we hereby highly resolve to continue this proud record in the coming year.



*"When our High School days are over,  
And we're scattered wide,  
We'll revere the name of Westport,  
Speak of her with pride."*

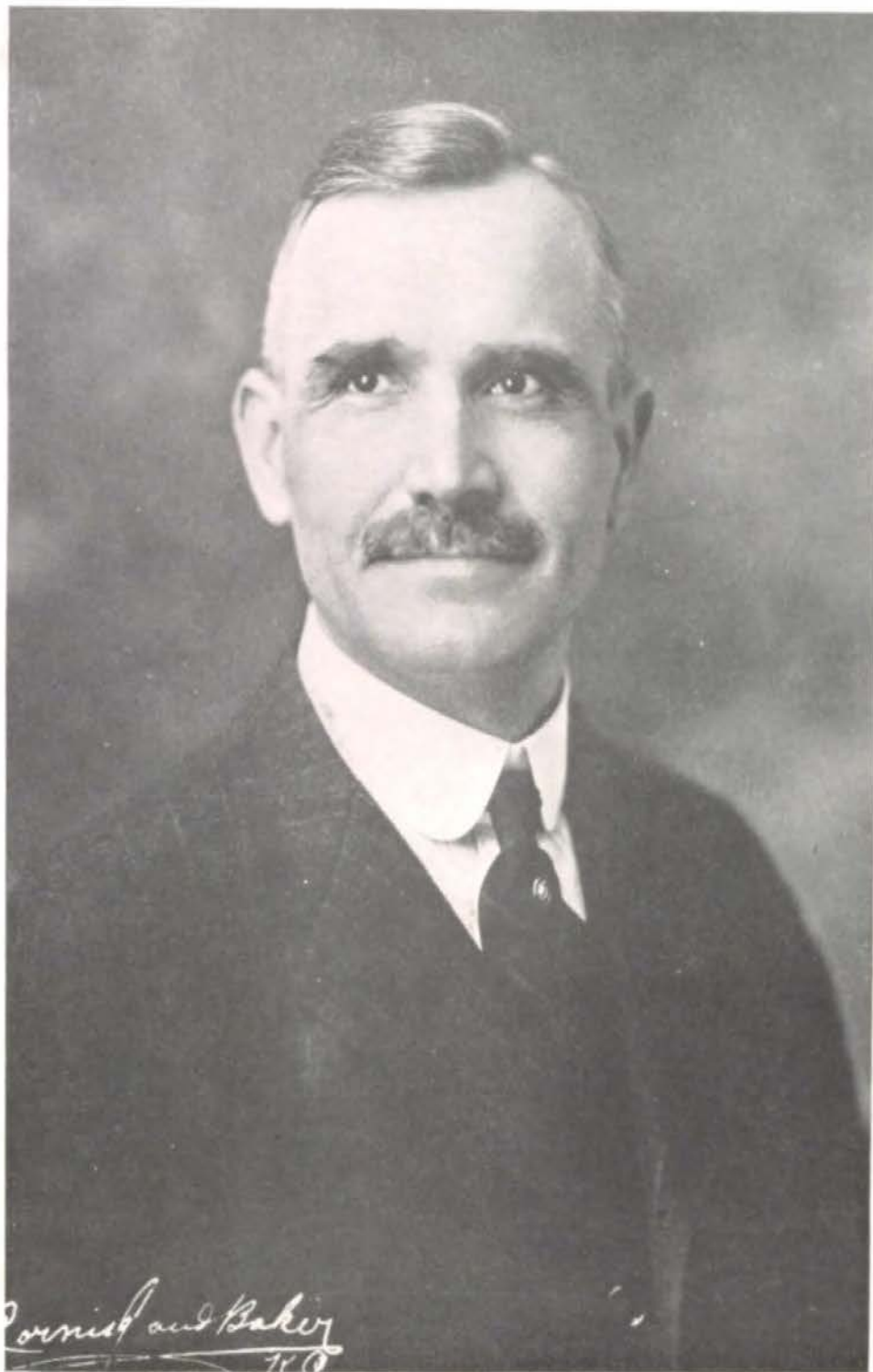


FACULTY

ELAINE MEIER.



JOHN LA MAR SHOUSE  
*Principal*



J. H. BECKMANN  
*Vice-Principal*



BERTHA BAIN  
*English*



F. N. BANISTER  
*Mechanical Drawing*



EVA BECHTEL  
*Zoology*



SHELLEY E. BENNETT  
*English*



IRENE BLASE  
*English, Latin*



JOHN N. BOOTH  
*History*



GRACE BORLAND  
*Stenography, Typewriting*



FLORENCE BRADLEY  
*Physical Education*



THE HERALD



HELEN F. BRIDGES  
*Mathematics*



EDITH CASE  
*Domestic Art*



MABEL C. COOK  
*Mathematics*



L. H. CUTTING  
*Mathematics*



MARGARET DEWITT  
*English*



DEAN DRYDEN  
*History*



GEORGE R. EDWARDS  
*Physical Education*



MABEL EGGLESTON  
*Latin*

THE HERALD



KATHERINE M. FISHER  
*Study Hall*



JOHN D. FRISTOE, JR.  
*Mathematics*



C. T. GOODALE  
*English*



MILO F. HALE  
*Forging, Turning*



EDITH J. HANNA  
*History*



R. V. HARMAN  
*Social Science*



FLOYD L. HARNDEN  
*Mechanical Drawing*



B. F. HART  
*Business*

THE HERALD



CARROLL F. HAYDEN  
*History*



EFFIE J. HEDGES  
*Music*



HENRY E. HEINBERG  
*Mathematics*



R. V. HILL  
*Physics*



ALBERT S. HUMPHREY  
*Public Speaking*



FREDERICK C. IRION  
*History*



ADA M. JONES  
*French*



DELLA D. JUNKIN  
*Physiography, Botany*

THE HERALD



ALICIA C. KEELER  
*Expression*



ELEANOR KLEEMAN  
*Student Adviser*



ANNA K. LASH  
*Latin*



EDITH O. LEWIS  
*History*



IDA B. LILLY  
*History*



DOROTHY S. MCLEOD  
*Latin, French*



MARY M. MCLEOD  
*Home Economics*



ADA G. MACLAUGHLIN  
*History*

THE HERALD



MABELLE M. MILLER  
*English*



N. B. MILLER, JR.  
*Science*



ELIZABETH MINCKEMEYER  
*Study Hall*



E. R. MORSE  
*Mathematics*



FRANK L. PHILLIPS  
*Spanish*



MARY REDMOND  
*Mathematics*



SOPHIA ROSENBERGER  
*English*



S. C. SEE  
*Chemistry*

THE HERALD



MARGUERITE C. SEWARD  
*Commercial*



MILDRED D. SHANE  
*Art*



FREDERIC C. SHAW  
*Greek, Latin*



M. H. SHEARER  
*Physiography*



VELMA SHELLEY  
*Spanish*



EMMA E. SHELTON  
*English*



ANN M. SHIRE  
*History*



LEONA E. SHORT  
*Expression, Public  
Speaking*

THE HERALD



NAOMI C. SIMPSON  
*English*



ALICE SUTHERLAND  
*French*



FLORENCE TOTTON  
*Commercial*



FLORENCE TROTTER  
*English*



LOULA VAN NEMAN  
*Botany*



BENJAMIN R. WARD  
*English*



HELEN WELCH  
*Spanish*



MARY S. WHEELER  
*English*

THE HERALD



ANN CROMBIE WILDER  
*Latin*



SHELTON WILHITE  
*Art*



JEANETTE MAXWELL  
*Librarian*



OTTO BOMAN  
*Sgt., U. S. A.*  
*Military Science and*  
*Tactics*



RUTH E. STORR  
*Registrar*



ESTELLE KITZING  
*Clerk*







Top row: LAFFERTY, KELLY, McCLURE, HARNDEN, TAYLOR.  
Second row: CLEVELAND, GARST, OUTLAND.  
Third row: FIELD, SOMMERVILLE, O'MALLEY, HERYER.  
Bottom row: HALL, WEATHERLY, DISSMAN, GANGE, LIEBERMAN.



## Herald Staff

### SENIORS

Florence Harnden, Fred Kelly, Joe Lafferty, Harriet McClure, Hugh Taylor.

### JUNIORS

John Cleveland, Ruth Garst, John Outland.

### SOPHOMORES

Stanley Field, Joe O'Malley, Ruth Sommerville.

### ADVERTISING STAFF

Everett Weatherly, Jerome Lieberman, Lester Hall, James Dissman, Harold Gange.

### PHOTOGRAPHER

Fred Heryer.

### ADVISER

John N. Booth.

## The Crier Staff



Top row: O'MALLEY, TAYLOR, SOMMERVILLE, GARST, HALL, LAFFERTY.  
Middle row: FIELD, LIEBERMAN, McCLURE, OUTLAND, J. N. BOOTH, Adviser.  
Bottom row: CLEVELAND, KELLY, HANNEEN, WEATHERLY.

## Debate

### GIRL DEBATERS WIN CUP

#### AFFIRMATIVE TEAM

Constance Nuckles, captain; Georgia Bruce, Sally Chase, Miriam Garst, alternate.

#### NEGATIVE TEAM

June McLaughlin, captain; Grace Dooley, Helen Louise Woodsmall, Ardelle Britt, alternate.

To take the place of the Amherst cup the girl debaters presented to the school the trophy taken from Northeast in a double victory won Friday evening, April 4.

The affirmative team gained a two-to-one decision in their encounter with Manual and the negative team, which met Central in the Westport auditorium, also received the votes of two judges.

The question was, "Resolved, That the United States should recognize the soviet government of Russia."

Both teams presented skilfully developed arguments in their constructive speeches, giving evidence of careful preparation and training. Disclaiming any sympathy with communistic principles, the affirmative speakers sought to prove that Russia has a stable government and can fulfill her obligations. They contended that recognition would promote world peace and would be highly beneficial to the United States.



INTERSCHOLASTIC DEBATE  
TROPHY



THE WINNING TEAMS

The negative argument was based on the contention that recognition of any country is a political act and, since Russia has refused to comply with the requirements set forth by our state department, the United States would have everything to lose by extending recognition.

Westport's teams were especially strong in rebuttal, being prepared with a great amount of ammunition which they used effectively.

The cup won by the girls' teams is the gift of the Kansas City chapter of the Association of University Women. It is awarded each year to the high school which enters two winning teams in the girls' interscholastic debate. The school which wins for three successive years becomes permanent owner of the cup.

Breaking precedents of former years a second team was chosen.

Affirmative: Mary Margaret Moore, captain; Ellen Elvira Davis, Mary Teed, Mary Ellen Hubbard.

Negative: Elinor Curry, captain; Winifred Beatty, Mary Ethel Kirker, Helen Cowan.

### BOYS SURRENDER TROPHY

#### AFFIRMATIVE TEAM

Steuart Britt, captain; Medsker Christensen, Orville Richardson, Everett Weatherly, alternate.

#### NEGATIVE TEAM

Jerome Lieberman, captain; Fred Heryer, John Calendar, Robert Powell, alternate.

Westport surrendered the Amherst debate cup to Central this year after retaining it for two years. Central and Manual defeated all the opposing teams in the inter-high series and later Central won a decision from Manual in a dual meet.

The subject of the debate was, "Resolved, That Kansas City, Mo., should adopt the commission manager plan of government." The debates were held Friday evening, March 21, in the auditoriums of the four high schools. Each negative team remained at home. Westport's affirmative went to Manual and Central's affirmative



INTER-HIGH DEBATE TEAMS



GIRLS' SECOND TEAMS

team met the Gold and Blue negative. The decision was unanimous, both at Westport and at Manual.

Asserting that the present system of municipal management is unsatisfactory, the Westport affirmative speakers pointed out the advantages of the commission manager plan, showing that centralization of responsibility and the employment of



BOYS' SECOND TEAMS

experts would result in much more economical and efficient administration. They also proved that the proposed plan of government is essentially democratic.

The negative team centered their attack on the alleged undemocratic features of the city manager plan. They maintained that the short term of the average city manager is detrimental and argued that politics and graft still would prevail.

Manual attacked vigorously in the rebuttal and Westport laid down a counter barrage of arguments that seemed equally effective.

The Central affirmative team was composed of experienced, resourceful debaters who were especially strong in rebuttal. Joe Thomas had the stellar role for the visitors and John Calendar matched wits with him successfully.

The following were members of the second debate teams:

Affirmative: Tom Carroll, captain; Samuel Pierce, Albert Farmer, Lewis Skores.

Negative: Lyman Richardson, captain; Chandler Cole, Lewis Flarsheim, Landry Harwood.

#### THE RAVIN' OF AN UNFORTUNATE

Once upon a midnight skeery, long I pondered weak and weary,

On the horrible disasters which occurred the day before.

They had roused me from my dreaming, I had woke most loudly screaming

My poor brain with nightmares teeming, as I rolled off on the floor!

'Twas those terrible report cards which reposed inside my drawer,

Yes, 'twas that—and so much more.

Ah—distinctly I remember, it was in the warm Aprember,

Just four hours and I should rise to meet the scoldings, as of yore.

And the painful recollection of that hideous collection

And the "Matinee" reflection, came to me as I did roar!

Flunk again? Oh-h-h-h-h, NEVERMORE!



# Student Council

## OFFICERS

### FIRST TERM

### SECOND TERM

CHARLES DENSFORD	..... <i>President</i> .....	CHARLES DENSFORD
HELEN LOUISE WOODSMALL	..... <i>Vice-President</i> .....	GERTRUDE DOOLEY
HARRY BENNETTS	..... <i>Secretary</i> .....	TOM CARROLL
TOM CARROLL	..... <i>Treasurer</i> .....	VERNON KASSEBAUM
MAYBELLE MILLER	} ..... <i>Aivs.ers.</i> .....	{ MAYBELLE MILLER
MARY WHEELER		
		{ R. V. HARMAN

The first big task undertaken by the council this year was the sale of Crier tickets, and the enthusiastic spirit with which this work was done characterized the council this year.

The student council planned and held a Sophomore mass meeting in which the institutions and traditions of our school were explained by upper classmen. It was declared a decided success by everyone concerned.

A committee of students worked in conjunction with the faculty committee in planning the assemblies this year. This co-operation resulted in many fine programs.

After much consideration the council decided to ask the student body to refrain from class yells in the assembly and to lend all their enthusiasm to the school yells. Another progressive step taken by the council was a plea for better conduct in the



STUDENT COUNCIL, SECOND TERM



STUDENT COUNCIL, FIRST TERM

halls. Several serious accidents had happened and this action on the part of the council was appreciated.

Then came the Fourth Annual All-school Mixer. The council took complete charge and, facing many almost insurmountable obstacles, produced the biggest and best mixer Westport ever had. The ticket sales netted \$57.12.

Probably the most brilliant achievement of the year was the Junior Red Cross drive. The amount collected was \$835.61, \$300 more than any other school in Kansas City.

A committee from the council gave the trophies and the trophy case a much needed cleaning and the shining cups gave proof that our councilmen are not afraid of work.

The council received special commendation for their work in the bazaar held for the benefit of the Gold Star Scholarship fund.

Meeting the necessity of having an honor pin for scholastic excellence the council offered a prize of five dollars for a design for the pin. Working with the faculty this plan was made complete, and the council appropriated \$50 for the first honor pin fund.

For the third successive year the council took complete charge of the Herald sales.

The council decided to lend its support and co-operation to the Mary Harmon Weeks fund by promoting the opera, "The Pirates of Penzance," put on by the Glee Club for the benefit of that fund. The council also helped to advertise and sell tickets for the starlight concerts to be held in Swope Park this coming summer.

Early in the first term the council undertook the compiling of a history of Westport. Committees have worked on it all year, but time prohibits its completion. When it is completed next year it will be the most valuable thing that the council has left for the school and an asset that few schools are able to boast.



*Executive Board*

SECOND TERM

*Seniors*—Joe Lafferty, Agnes Shepherd, Harold Roberts.

*Juniors*—Helen Olsen, Helen Cowan, Billy Moore.

*Sophomores*—Elise Rosenwald, Maurice Sandberg, Charles Oder.

While engaged in these activities the council has not forgotten its own development. Several times during the year reports have been made on the ideas and activities of other student councils. As a result there has been a development of confidence, of business ability and of intelligent discussions in the council meetings. One much needed amendment was made in the constitution, and a committee of nine students has been appointed to consider several most important amendments and to report on them at the first meeting of next year.

MEMBERS

FIRST TERM

Marian Baker	Harry Sommerville
Maurice Barnes	Alfred Spencer
Harry Bennetts	Dan Uhrig
Clarence Cassady	Mac Wallingford
Tom Carroll	Agnes Berglin
Medsker Christensen	Betty Birch
Stewart Chaney	Betty Brewster
Charles Densford	Marion Brinton
Don Edwards	Martha Brown
J. G. Fowler	Elinor Curry
Eugene Fisher	Marion Dillenbeck
Myron Graham	Grace Dooley
Fred Heryer	Helen Elizabeth Eastis

SECOND TERM

Marian Baker	Curtis Sutermeister
Dan Brady	Gilbert Turner
Tom Carroll	Dan Uhrig
Stewart Chaney	Mac Wallingford
Charles Densford	Richard Wolfe
Garnett Fowler	Agnes Berglin
George Frost	Betty Brewster
Billy Gange	Elizabeth Calvin
Billy Hamrick	Doris Clausen
William Hogin	Helen Cowan
Vernon Kassebaum	Elinor Curry
Joe Lafferty	Gertrude Dooley
Albert Lieberman	Alma Fritter



*Executive Board*

FIRST TERM

*Seniors*—Martha Brown, Vernon Kassebaum, Allan Moore

*Juniors*—Elinor Curry, Fred Heryer, John Outland

*Sophomores*—David McVey, Joe O'Malley, Helen Staley

Richard Hill  
 Billy Hoffstott  
 William Jay  
 John Jolley  
 Vernon Kassebaum  
 Joe Kniffin  
 Joe Lafferty  
 Tracy Leonard  
 Robert McCrum  
 David McVey  
 Allan Moore  
 Charles Oder  
 Joe O'Malley  
 John Outland  
 Robert Powell  
 Rolland Rankin  
 Charles Reynolds  
 Gordon Schellberg

Maurine Frazier  
 Florence Harnden  
 Thalia Keller  
 Dorothy Kemper  
 Hilda Lawrie  
 Margery Lawrie  
 Elaine Meier  
 Alice Piercy  
 Martha Jane Randle  
 Elise Rosenwald  
 Bonnie Lyn Rutter  
 Betty Suddarth  
 Marjorie Scott  
 Agnes Shepherd  
 Ruth Sherman  
 Helen Staley  
 Elinor Thompson  
 Helen Louise Wood-  
 small

Leo Lipscomb  
 Robert McCrum  
 John McGarvey  
 David McVey  
 Allan Moore  
 Billy Moore  
 John Newell  
 Phil Norvell  
 Charles Oder  
 Robert Powell  
 Robert Renfro  
 Lyman Richardson  
 Harold Roberts  
 Joe Sabourin  
 Thomas Samuel  
 Maurice Sandberg  
 Howard Stewart

Alice Groendycke  
 Rachel Hamilton  
 Lucille Hodge  
 Thalia Keller  
 Eleanor Kenyon  
 Hilda Lawrie  
 Elaine Meier  
 Helen Olsen  
 Alice Piercy  
 Virginia Powell  
 Jeanette Reicher  
 Elsie Rosenwald  
 Hazel Scott  
 Agnes Shepherd  
 Helen Staley  
 Nina Tighe

## Art Department



VERA FRAZELL  
*Designer of Herald Cover*

The increased enrollment in the art department shows a growing interest in art and a higher appreciation of its value. By co-operating with various activities the art students have rendered invaluable aid in promoting worthy school enterprises.

The chief event of the year was the Herald contest. To develop more unity and individuality in the year book, a contest was held for a contour to be used on the six division pages entitled Seniors, Activities, Faculty, Societies, R. O. T. C., and Athletics. The contour made by Vera Frazell was selected. This was followed by a contest for the division pages in which much originality, skill and accuracy was displayed. The winning designs were submitted by William Chouteau, Vera Frazell, Alice Groendycke, Elaine Meier, Bernice Teed and Helen Trusty.

Seventy-three designs were submitted for the Herald cover. The prize, a ten dollar gold piece, was awarded to Vera Frazell. Miss Frazell is the first senior who has won the Herald cover prize in recent years. She also is the only art pupil who has received the votes of all the judges in the contest.

The judges were: H. M. Kurtzworth, director of the Kansas City Art Institute; Karl Fitzer and Howard E. Chilton of the Burger Engraving company; Miss Harriet Cocks, of the Northeast high school; and Mrs. Edward C. N. Brown. William Chouteau won second place and James Wright third. Those who received honorable mention were Catherine Roth and Kathryn Jackson. The other contestants were:

Mary Ann Austin	George Hunter	Margaret Emmert
Caroline Baker	Elaine Meier	Vera Frazell
Elruth Banta	Ruth McGeehan	Irene Gardner
Irma Binney	Edna McCamish	Alice Groendycke
Willella Blakely	Francis Miller	Dorothy Gould
Catherine Barrons	Thelma Roe	Dorothy Halbert
Katherine Burns	Dwight Roberts	Mary C. Tierney
Emma Bush	Marian Mertz	Helen Trusty
Mary Byhee	Martha Smith	Elizabeth Tedder
Virginia Caskey	Sidney Smith	Clara Louise Wasson
Josephine Chambers	Helen Strohm	Emma Wood
Marguerite Clarke	Mildred Schuetz	Elizabeth Webb
Katherine Combs	Bernice Teed	Majorie Worthington
Dora Craig	Lula Conkey	Isabel Wood
Mary Olive Crawley	Marion Dillenbeck	Jack Terrell
Majorie Hall	Vera Mae Douglass	Elizabeth Lee
Katherine Kohr	Carlotta Duffelmeyer	

The art students who contributed drawings to the Herald sincerely hope they meet the approval of the student body.

Visits to the Art Institute have been interesting features of the work of the department. Each class endeavors to go once a month if the weather permits. Thus they are able to see ten exhibits during the year. The students become acquainted with the different types of painting and with present day painters and learn to appreciate them. This knowledge will prove invaluable in later years.

The senior craft class is proving a most interesting one. The students are showing better craftsmanship and stronger work. The materials used are wood, metal, clay, parchment and cloth. This class also made the plans and stage setting for the senior play. The miniature stages were worked out cleverly from the color and lighting effects to the furniture. Another class made the posters for the senior play.

The contest for the honor pin design was the last of the year. Three hundred designs were submitted. The faculty committee selected the two most desirable designs to be made up in gold. They were designs of Marguerite Clark and Marion Dillenbeck. Then the student council and the honor students voted on them. The design submitted by Miss Dillenbeck, former president of the Jules Guerin Art club, received the most votes and Miss Dillenbeck received a prize of five dollars. The pins were equally desirable, well proportioned and carefully worked out.

#### JUNIOR CLASS SONG

*To Tune of "Comin' Through the Rye"*

Here we stand in all our glory,

The class of '25;

And though as yet we're little known,

To win renown we'll strive.

*Chorus*

We have wit and we have talent,

We have beauty, too,

And with such gifts as these, oh, say,

Just watch what we will do.

For three long years we've struggled on

Through lessons, tasks and drill,

And though we've left a lot behind,

We've much before us still.

*Chorus*

The Seniors think they've done so well,

Their glory ne'er can fade,

But we such starry heights shall gain

We'll lay them in the shade.

*Chorus*

—Selby Hanssen, '25.

## Honor Roll



The honor roll is a comparatively recent institution at Westport, having been started three years ago. It is unique in that it accords recognition of scholastic achievement both to graduates and undergraduates.

Students who are on the honor roll must receive in term grades two solid E's and one solid G or the equivalent, substituting two non-solids for one solid. They must receive no grade below M.

Students who are on two successive honor rolls become honor students and receive bronze pins. Those on four honor rolls, only two of which must be successive, receive silver pins. Students who attain distinction in scholarship receive gold pins with one, two or three pearls according to their rank in scholarship.

The prize offered by the student council for the best honor pin design was won by Marion Dillenbeck. Marguerite Clark received honorable mention. The council has offered to help finance this enterprise.

Following are the undergraduates on the honor roll for June 8, 1923:

Edward Brinton	Robert Wilson	Nadine LaMar
Steuart Britt	Ethan Young	Ruth Laundry
John Calendar	Helen Baier	Hilda Lawrie
James Chambers	Katherine Barnes	Elizabeth Lee
Thomas Childs	Winnifred Beatty	Juanita Lightner
Medsker Christensen	Louise Binswanger	Lenore Linfield
Frank Cohn	Marion Brinton	Georgia McEwen
Waldo Dunnington	Ardelle Britt	June McLaughlin
Guy Green	Josephine Brown	Elaine Meier
Fred Heryer	Martha Brown	Mary Margaret Moore
Fred Kelly	Georgia Bruce	Genevieve Munsell
Joe Lafferty	Virginia Caskey	Mary Nichols
Joseph Larson	June Chandler	Constance Nuckles
Jerome Lieberman	Sally Chase	Ruth Ostrom
Joseph Newcomer	Dorothy Clayton	Abbott Parker
John Outland	Katherine Combs	Ruth Sheurman
Julius Peltzman	Aline Davidson	Dorothy Thomas
John Rehner	Margaret Elledge	Helen Patterson
Robert Renfro	Opal Fallin	Alice Rabinowitz
Byron Rexroth	Ruth Garst	Mary Sants
Lyman Richardson	Velda Gebhard	Henrietta Schmitt
Orville Richardson	Alice Groendycke	Dorothy Shields
Hugh Taylor	Dorothy Halbert	Gladys Shifflett
Audley Vonck	Lillian Hughes	Gene Truitt
Everett Weatherly	Nancy Lou Hunter	Irene Weissinger
		Isabel Wood

THE HERALD

Honor roll for term ending January 18, 1924:

Edward Alexander	William Snyder	Nena Jurlow
Abe Bertman	Irwin Sutermeister	Thalia Keller
Edward Brinton	Hugh Taylor	Eleanor Kenyon
Stewart Britt	Godfrey Thompson	Mary Kohler
Robert Butler	Everett Weatherly	Katherine Kohr
John Calendar	Robert Wilson	Hilda Lawrie
James Chambers	Jack Wolf	Margery Lawrie
Stewart Chaney	Frank Woodhead	Elizabeth Lee
Thomas Childs	Bertha Aubel	Juanita Lightner
Medsker Christensen	Helen Baier	Evelyn Llywellyn
Donald Clark	Winnifred Beatty	June McLaughlin
Waldo Dunnington	Louise Binswanger	Alice MacMahon
Eugene Dycke	Mary Blomeyer	Elaine Meier
Louis Farber	Catherine Ann Brandt	Mary Margaret Moore
Garnet Fowler	Marion Brinton	Genevieve Munsell
George Frost	Ardelle Britt	Jane Mustion
Selby Hansson	Martha Brown	Claudia Meyers
Landry Harwood	Georgia Bruce	Mary Nichols
Fred Heryer	Martha Burney	Jean Norberg
Fred Kelly	Virginia Caskey	Constance Nuckles
William Kenney	Sally Chase	Ruth Ostrom
Kenneth Kern	Helen Clark	Helen Patterson
George Kerr	Frances Collard	Elene Peters
Stanley Knight	Katherine Combs	Alice Rabinowitz
Frank Lacy	Madeleine Cronin	Alice Roberson
Joe Lafferty	Louise Crosby	Henrietta Schmitt
Gordon Leonard	Cora Crithfield	Agnes Shepherd
Albert Lieberman	Aline Davidson	Ruth Sheurman
Jerome Lieberman	Dorothy Dorman	Dorothy Shields
Robert MacDowell	Virginia Dorman	Gladys Shifflett
Russell Magnuson	Vera Mae Douglass	Ruth Sommerville
Howard Monnett	Mary Margaret Downing	Josephine Sonin
Billy Moore	Mary Edwards	Dorothea Stair
Joseph Newcomer	Margaret Elledge	Florence Stowell
Richard Newman	Dorothy Ferguson	Bernice Teed
Charles Oder	Vera Frazell	Mary Teed
Joe O'Malley	Norma Freed	Rebekah Thompson
John Outland	Cecelia Friedman	Gene Truitt
Samuel Pearce	Sadie Friedson	Louie Truitt
Julius Peltzman	Ruth Garst	Mary Gertrude Truitt
John Rehner	Velda Gebhard	Mary Ruth Welsh
Robert Renfro	Jeannette Greenman	Wilma White
Byron Rexroth	Dorothy Halbert	Leah Whittington
Solomon Ribakoff	Florence Harnden	Ada Wiley
Wallace Ruckert	Mary Koernig	Katheryn Wolcott
Ernest Rushing	Mary Ellen Hubbard	Isabel Wood
Neal Sawyer	Mary Hecker	Mary Wurst
William Sayre	Lillian Hughes	Virginia Young



## Music



### THE SCHOOL ORCHESTRA

The school orchestra was one of the most important musical organizations in Westport this year. The members have gained much benefit from their musical training and the experience developed by enthusiastic team work. They also have contributed much to the enjoyment of all the occasions when they have appeared in public.

The orchestra played at two parent-teacher meetings, the senior and Christmas plays, the opera, "Pirates of Penzance," the convention hall music festival and at several assemblies in the school. On each of these occasions the orchestra played with credit to themselves, Mrs. Hedges and their school.

The members:

Violins—Max Adelstein, Fred Baker, Chandler Cole, Philip Glass, Charles Liebolt, Jerome Mayer, William O'Donnell, Thomas Roach, Lewis Smith, Cora Lee Welch, Herbert Wedemeyer, Kenneth Duncan, Sara Barratt, Margaret Forrester, Amelia Greenman, Annabelle Hollenbeck, Marjorie Lawrie, Elizabeth McDaniel, Mildred Messmore, Constance Nuckles, Virginia Young.

Flutes—Elmira Hassig, Richard Reuland.

Clarinets—Kenneth McLatchey, Ivan Phillips, Charles Weltz.

Cornets—Eugene Frazier, James Mills, Jack Nicholson, Parker Shirling, Keith Piper.

Saxophones—Malcolm Bliss, Frank Chandler, Keith Kirk, Gordon Shellberg.



### THE DANCE ORCHESTRA

The membership of the dance orchestra was increased from five to eight this year, becoming more like the earliest orchestra, which had from ten to twelve instruments.

The first dance orchestra was organized in 1920, when there was a demand for the elimination of jazz. The orchestra proposed to supplant jazz with acceptable popular music at all school parties.

With the exception of two members, Everett Dillard and Eldon Eaton, the members of the orchestra never had played together until this year. F. C. Shaw, the sponsor, deserves much credit for the excellent work of the group.

The eight active members:

Saxophones—Calvin Austin, Howard Histed, Ward Kirke.

Violins—Everett Dillard, Hugh Taylor.

Piano—Vernon Kassebaum.

Cornet—Eldon Eaton.

Drums—Charles Wilson.

### THE GLEE CLUB

The glee club shares with the orchestra the credit for developing a keener appreciation of music among the students. The club was strengthened by an abundance of talent which was only brought to light this season.

In the big event of the year, the annual music contest, our song-birds yielded the prize to Northeast. The cantata, "The Lay of the Bell," by Bruch was given in conjunction with the other high school glee clubs in Junior College. The club also sang at the spring music festival in convention hall May 2.

A one-act opera, "Trial by Jury," by Gilbert and Sullivan, featured a musical program in assembly in December. The opera, "The Pirates of Penzance," was presented in May for the benefit of the Parent-Teacher association.

Those who received pins in recognition of their work in the inter-high music contest were Nelle Richards, Don Burnett, Delmar King, trio; Garnett Fowler, Harriet Friedman, solo.

## Dramatics



"THE ROMANTIC AGE"

### THE CAST

Melisande .....	Marion Dillenbeck
Mrs. Knowles, her mother.....	Gertrude Dooley
Mr. Knowles .....	Orville Richardson
Jane Bagot, her cousin .....	Winona Shideler
Gervais Mallory .....	Lewis Shores
Gentleman Susan .....	Zolley Lerner
Ern, a peasant boy.....	Julius Peltzman
Alice, the maid .....	Eleanor Hall

An altogether charming comedy, "The Romantic Age," was produced as the Christmas play Friday evening, December 21. Each member of the cast fulfilled all expectations and the play was given an unusually successful staging.

Marion Dillenbeck was an adorable Melisande. Her role was a difficult one, but Miss Dillenbeck met every demand upon her dramatic talent with rare grace and skill.

In the part of Gervais Mallory, Lewis Shores showed not only sincerity but also finish and depth. His Gervais always was vitally human.

Gertrude Dooley in the character part of Mrs. Knowles was the hit of the play. The finish, the subtlety and the artistry of her Mrs. Knowles was worthy of a stage professional.

Jane, the opposite of Melisande, was played delightfully by Winona Shideler. The two types, one romantic and the other more practical, always were distinct.

Guy Green, in the part of Bobby, Melisande's scorned lover, embraced his opportunities as soon as they presented themselves and Jane became an opportunity.

In the difficult part of Mr. Knowles, Orville Richardson showed great promise. With added years and experience he should make a name for himself in amateur productions.



**THE HERALD**



The philosophy that Milne expressed in his play through Gentleman Susan was handled agreeably by Zolley Lerner, who held his audience and won their admiration.

A little part and a little boy, but a big hit. That was the combination that Julius Peltzman played as Ern, the peasant boy.

Eleanor Hall was excellent as the maid, Alice, and although the part called for no great amount of talent, she showed undoubtedly that she has it.

The unqualified success of the play was a testimonial to the skill, the unflagging industry and the kindly, sincere interest of the director, A. S. Humphrey. Miss Naomi Simpson also rendered invaluable assistance in rehearsals.

**"YOU AND I"**

"You and I," the senior play, was presented May 23. The plot is developed in a series of incidents cleverly arranged by the author to obtain the best dramatic effects.

Rickey White and his sweetheart, Ronny Duane, are the leading characters. Maitland White, Rickey's father, is convinced that he sacrificed a great career as a painter by marrying and advises Rickey not to repeat his mistake. Deaf to the pleadings of parents and friends, Rickey finally marries the girl of his choice and becomes an architect as he always had planned.

Maitland White, buffeted on every side, wins sympathy on account of his ungratified ambitions and his unselfish devotion. Interest, however, centers largely in the unavailing efforts of Ronny to persuade herself and Rickey that their love for each other is a barrier to his success.

The play "You and I" was written by Philip Barry and won the 1923-24 Harvard prize. It was produced under the direction of Miss Leona Short.

**THE CAST**

Ronny Duane .....	June McLaughlin
Rickey White .....	Fred Kelly
Nancy White .....	Eleanor Hall
Maitland White .....	Stewart Chaney
Etta, the maid .....	Grace Dooley
G. T. Warren .....	Steuart Britt
Geoffrey Nichols .....	Harry Bennetts



## Class in Folk Dancing

A recreational folk dance class was organized at the beginning of the second semester with Miss Florence Bradley as director. The class consists of fifty boys and girls selected from those who have a study period fourth hour. This is the only class of its kind in the Kansas City high schools and is one of the very few in the country.

Under Miss Bradley's skillful, enthusiastic guidance folk dancing has become one of the most popular and successful activities in the school. Other schools in the city are planning to organize similar classes next fall.

During her recent visit in Kansas City Miss Elizabeth Burchenal, international authority on folk dancing, spoke of the class in terms of highest praise after coming to Westport especially to see the boys and girls in action.

"It is the most wonderful thing I have seen," she said. "The spirit of the members, especially of the boys, is charming and unequalled. The same experiment is being tried in only one other place where I have been and the Westport class is far superior to that one."

Some of the far sighted members of the class are seeking to make folk dancing one of the permanent activities by organizing a new club.

The class is conducted in a most informal manner. Partners never are self-chosen but usually are found in a grand march. The boys line up on one side and the girls on the other and march down the center of the room each with the partner he chances to get, thus making the affair more like a mixer. The snake dance always has proved successful in that it arouses pep. At least too short dances are learned in one lesson. They usually are the kind in which the participants become well acquainted.

Often there is a stunt of some kind, with magic or a trick. For instance Ingram Kidd was seen one day down on the floor on his hands and knees with a glass of water held in the palm of either hand. He was requested to make a wish, and if he succeeded in getting up without spilling the water his wish would come true. But he did not succeed.

The class has been beneficial as well as entertaining, as evidenced by the fact that games for the junior mixer were planned and conducted by Lewis Shores, one of the members.

# The Recreation Class 4<sup>th</sup> Hour





## Clay Club



COLORS—*White and Gold.*

MOTTO—*“Nihil hoc nisi per sectum ingenio elaboratum industria adferri oportet.”*

### OFFICERS

<i>First Term</i>		<i>Second Term</i>
HARRY BENNETTS.....	<i>President</i> .....	HARRY BENNETTS
MEDSKER CHRISTENSEN.....	<i>Vice-President</i> .....	JEROME LIEBERMAN
JEROME LIEBERMAN.....	<i>Secretary</i> .....	VERNON KASSEBAUM
VERNON KASSEBAUM.....	<i>Treasurer</i> .....	THOMAS CARROLL
ELVIN VOIGTS.....	<i>Sergeant-at-Arms</i> .....	JOHN CELL
THOMAS CARROLL.....	<i>Critic</i> .....	ALBERT LIEBERMAN
FREDERICK C. IRION— <i>Adviser.</i>		

### MEMBERS

Harry Bennetts	Albert Farmer	Albert Lieberman	Byron Rexroth
Robert Bone	Stanley Field	Jerome Lieberman	Ernest Rushing
Edward Brinton	Louis Flarsheim	Leroy Lichliter	David Smith
Thomas Carroll	John Fry	Maclay Lyons	Louis Turner
John Cell	Juan Gorrell	David McVey	Elvin Voigts
Medsker Christensen	Vernon Kassebaum	Paul Moffat	Audley Vonck
William Clark	William Kenney	Joseph Newcomer	Fred Warner
Chandler Cole	Kenneth Krause	Ralph Patt	Francis Webb
Charles Densford	Frank Lacy	Robert Powell	
Waldo Dunnington	Tracy Leonard	John Rehner	



## Clionian Society



### OFFICERS

<i>First Term</i>		<i>Second Term</i>
HUGH TAYLOR.....	<i>President</i> .....	FRED KELLY
JUNE McLAUGHLIN .....	<i>Vice-President</i> .....	GENE TRUITT
GENE TRUITT .....	<i>Secretary</i> .....	CONSTANCE NUCKLES
ORVILLE RICHARDSON.....	<i>Treasurer</i> .....	ABBOTT PARKER
BERRY HAUG.....	<i>Sergeant-at-Arms</i> .....	LYMAN RICHARDSON
FRED KELLY.....	<i>Critic</i> .....	HAROLD GANGE

MISS FLORENCE TROTTER—*Adviser*

### MEMBERS

Winifred Beatty	Ruth Moore	Charles Brooks	Robert McKenzie
Virginia Browning	Helen Noble	Gifford Burnap	John Murphy
Elizabeth Bullard	Margaret Page	Gordan Chapman	Marvin Perrin
Ruth Burgess	Abbott Parker	Robert Coerver	Roland Rankin
Frances Cast	Frances Payne	Frank Cooper	Lyman Richardson
Dorothy Clayton	Dorothy Rogers	Robert Corn	Orville Richardson
Ellen Davis	Jean Russell	Everett Dillard	Max Robinson
Margaret Emmert	Ruth Schuerman	George Frost	William Rowe
Miriam Eubank	Marcella Shaw	Harold Gange	Charles Shepherd
Miriam Garst	Sue Shirley	Guy Green	Lewis Shores
Harriet Harris	Josephine Sonin	Joe Guerry	J. L. Shouse, Jr.
Margaret Helman	Selma Sonin	Berry Haug	Lawrence Stevenson
Lucile Hodge	Gene Truitt	Richard Hill	Hugh Taylor
Ruth Killiger	Helen Trusty	Fred Kelly	George Truitt
Constance Nuckles	Irene Van Evera	George Kerr	Mac Wallingford
Eileen Lafferty	Margaret Weckman	Ingram Kidd	Everett Weatherly
Elizabeth Lee	Miriam Weckman	Zolley Lerner	Paul Whitcraft
Jane McGervey	Mary Ruth Welsh	Deward Lindsey	Harold Witt
Mildred McHugh	Warren Barrett	Leo Lipscomb	
June McLaughlin	Stanford Block	Billy London	

## Irving Club



COLORS—Red and Gold.

### OFFICERS

<i>First Term</i>		<i>Second Term</i>
STEUART BRITT.....	<i>President</i> .....	JAMES DISSMAN
FRED HERYER.....	<i>Vice-President</i> .....	JOE LAFFERTY
JOE LAFFERTY.....	<i>Secretary</i> .....	ALLAN MOORE
JAMES DISSMAN.....	<i>Treasurer</i> .....	LANDRY HARWOOD
ALLAN MOORE.....	<i>Sergeant-at-Arms</i> .....	J. C. PIPER
HOWARD HISTED.....	<i>Critic</i> .....	JOE KNIFFEN
J. C. PIPER.....	<i>Mascot</i> .....	GOODMAN SIMONDS
SHELLEY E. BENNETT— <i>Adviser</i>		

### MEMBERS

Wendall Baker  
Steuart Britt  
James Chambers  
Thomas Childs  
John Cleveland  
Duane De Brunner  
James Dissman  
Kenneth Duncan  
Lester Hall

Landry Harwood  
Fred Heryer  
Howard Histed  
Milburn Jeffries  
Joe Kniffin  
Joe Lafferty  
Bernard McCray  
Wilbur Moebus  
Howard Monnett

Allan Moore  
Billy Moore  
John Newell  
Charles Oder  
Creton O'Gorman  
Joe O'Malley  
John Outland  
J. C. Piper  
Robert Renfro

Neal Sawyer  
Goodman Simonds  
Ralph Swofford  
Jesse Teague  
James Vineyard  
Frank Wachter

# Pundit Club



## OFFICERS

### First Term

HARRIET McCLURE  
 MARY NICHOLS  
 DOROTHY KEMPER  
 MARATHA BROWN  
 DOROTHY SHIELDS  
 HELEN LOUISE WOODSMALL

*President*  
*Vice-President*  
*Secretary*  
*Treasurer*  
*Sergeant-at-Arms*  
*Critic*

### Second Term

MARY NICHOLS  
 MARTHA BROWN  
 MARY OLIVE CRAWLEY  
 GRACE DOOLEY  
 RUTH GARST  
 DOROTHY SHIELDS

MISS MABEL C. COOK—*Adviser*

## MEMBERS

Elizabeth Brewster  
 Catherine Ann Brandt  
 Katherine Barnes  
 Ardelle Britt  
 Martha Brown  
 Betty Birch  
 Evelyn Clift  
 Catherine Cornell  
 Elinor Curry  
 Grace Dooley

Gertrude Dooley  
 Helen Estes  
 Helen Findlay  
 Evelyn Forrester  
 Ruth Garst  
 Florence Harnden  
 Katherine Homan  
 Mary Ellen Hubbard  
 Dorothy Kemper  
 Mildred Kelly

Alice Lanterman  
 Veramina Lewis  
 Harriet McClure  
 Mary McElroy  
 Ruth Mastin  
 Mary Nichols  
 Martha Nichols  
 Helen Olsen  
 Katherine Pipkin  
 Virginia Powers

Martha Randel  
 Marion Schooler  
 Dorothy Shields  
 Sidney Smith  
 Elizabeth Swofford  
 Isabel Wood  
 Margaret Wilson  
 Helen Louise Woodsmall

## Round Table Club



COLORS—*Light Blue and Gold.*

MOTTO—*Live pure, speak the truth, right the wrong, follow the king; else wherefore born?*

### OFFICERS

<i>First Term</i>		<i>Second Term</i>
JOHN JOLLEY.....	President.....	MARION DILLENBECK
ELEANOR HALL.....	Vice-President.....	BARRETT LANING
MALCOLM BLISS.....	Secretary.....	MALCOLM BLISS
FORD NELSON.....	Treasurer.....	WILLIAM HOGIN
MARION DILLENBECK.....	Sergeant-at-Arms.....	DAN UHRIG

MISS IRENE BLASE—*Adviser*

### MEMBERS

Elizabeth Abel	Margery Lawrie	Rebekah Thompson	Justin Longmore
Helen Bliler	Juanita Lightner	Illene Weissinger	Paul Meissler
Frances Bliss	Edith May Linder	Leah Whittington	Ford Nelson
Marion Brinton	Elaine Meier	Margery Worthington	Richard Newman
Josephine Brown	Cecil Miller	Meridan Ashbaugh	Philip Osborn
Irma Binney	Frances Miller	Dick Allee	Robert Ray
Helen Cowan	Mary Margaret Moore	Morris Barnes	Jack Reavely
Margaret Davidson	Geraldine Pardee	Malcolm Bliss	Justin Roach
Marion Dillenberg	Alice Percy	John Calendar	Gilbert Turner
Vera Frazell	Dorothy Purcell	Stewart Chaney	James Scales
Alice Groendycke	Kate Reynolds	William Dinklage	Dan Uhrig
Eleanor Hall	Corrine Stuart	Richard Harkness	Kincaid Ward
Mary Hecker	Betty Suddarth	William Hogin	Jay Wilcox
Dorothy Hinshaw	Helen Suddarth	George Hunter	Robert Wilson
Mary Elizabeth Jolley	Mildred Stuart	John Jolley	James Wright
Hilda Lawrie	Florence Tennant	Barrett Laning	

## Alpha Lyra Club



COLORS: *Wine and Canary*

### OFFICERS

<i>First Term</i>		<i>Second Term</i>
MARGARET ELLEDGE .....	<i>President</i> .....	NELLE RICHARDS
DONALD BURNETT .....	<i>Vice-President</i> .....	WILLIAM SLADEK
HARRIET FRIEDMAN .....	<i>Secretary</i> .....	MILDRED STUART
WILLIAM SLADEK .....	<i>Treasurer</i> .....	HOBERT WEST
JOSEPH ESTERLEY .....	<i>Sergeant-at-Arms</i> .....	JOSEPH ESTERLEY
DELMAR KING .....	<i>Boys' Chairman</i> .....	CARL TIMMONS
LENORE BIRD .....	<i>Girls' Chairman</i> .....	THALIA KELLER
MRS. EFFIE J. HEDGES— <i>Adviser</i>		

### MEMBERS

Katherine Barnes	Irene Goldberg	Hazel Scott	Garnett Fowler
Gladys Biggers	Bernice Hamilton	Dorothy Seager	Melvin Gentry
Lenore Bird	Juanita Hofsess	Lena Lee Selders	Lester Johnson
Sara Bodow	Thalia Keller	Bernice Smith	Delmar King
Mildred Clark	Nadie La Mar	Mildred Stuart	William Sladek
Florence Doolittle	Maxine Lyons	Jamie Sullivan	Carl Timmons
Margaret Elledge	Vera Pearson	Ethel Traub	Arthur Valentine
Maurine Frazer	Nelle Richards	Mary Gertrude Truitt	Hobart West
Elizabeth Fitzgerald	Jeanette Reicher	Donald Burnett	
Harriet Friedman	Margery Ritzen	Joseph Esterley	

## B. E. P. Club



COLORS: *Purple and Gold*

### OFFICERS

<i>First Term</i>		<i>Second Term</i>
HELEN LOUISE WOODSMALL .....	<i>President</i> .....	JEROME LIEBERMAN
KATHERINE PIPKIN .....	<i>Vice-President</i> .....	JOHN CELL
FRED GUISENBERGER .....	<i>Secretary</i> .....	ABBOT PARKER
HELEN OLSEN .....	<i>Treasurer</i> .....	JOHN JOLLEY
JOHN CALENDER .....	<i>Sergeant-at-Arms</i> .....	JUSTIN ROACH
S. C. SEE— <i>Adviser</i>		

### MEMBERS

Marian Baker	Mary Ethel Kirker	Helen Louise Woodsmall	Vernon Kassebaum
Helen Bliler	Hilda Lawrie	Harry Bennetts	Jerome Lieberman
Josephine Brown	Mildred Letton	Malcolm Bliss	Robert McKenzie
Martha Brown	Veramina Lewis	Steuart Britt	Allan Moore
Evelyn Clift	Edith Lindner	John Calendar	John Newell
Martha Daniels	Helen Olsen	John Cell	Lyman Richardson
Margaret Davidson	Abbot Parker	Medsker Christensen	Justin Roach
Miriam Garst	Alice Piercy	Charles Densford	Max Robinson
Ruth Garst	Katherine Pipkin	Bill Gange	Neal Sawyer
Alice Gaugh	Barbara Thompson	Harold Gange	Mac Wallingford
Florence Hernden	Audrey Weinberg	Fred Guisenberger	Everett Weatherly
Jenny Hawkins	Illene Weissinger	Selby Hanssen	John Woodhouse
Mary Ellen Hubbard		John Jolley	Dan Uhrig

# Circulo Calderon



COLORS: *Red and Orange*  
 MOTTO: *"Adelante, siempre adelante"*

## OFFICERS

### *First Term*

JUANITA LIGHTNER ..... *President*  
 JOE LAFFERTY ..... *Vice-President*  
 LILLIAN HUGHES ..... *Secretary*  
 ALICE MACMAHON ..... *Treasurer*  
 JULIUS PELTZMAN ..... *Critic*

### *Second Term*

JOE LAFFERTY .....  
 MARION BRINTON .....  
 BILLY MOORE .....  
 MARY LOUISE KOHLER .....  
 JOHN PAINE .....

FRANK L. PHILLIPS—*Adviser*

## MEMBERS

Rocelle Anderson  
 Mildred Andrews  
 Bertha Aubele  
 Helen Bair  
 Marjorie Berkley  
 Marguerite Brewster  
 Marion Brinton  
 Marian Butler  
 Dorothy Dorman  
 Lucille Elliot  
 Mabel Gamage  
 Claire Hellman  
 Lillian Hughes

Margaret Huhn  
 Dorothy Kemper  
 Dorothy Kreider  
 Mary Louise Kohler  
 Juanita Lightner  
 Alice MacMahon  
 Edna McCamish  
 Mary Mathews  
 Eva Myers  
 Nadine Norman  
 Hazel Phillips  
 Dorothy Purcell  
 Alice Rabinowitz

Beatrice Ross  
 Clarice Slayton  
 Sarah Staley  
 Helen Sulzbacher  
 Erma Wedemeyer  
 Estella West  
 Wilma White  
 Edward Brinton  
 John Burkartmaier  
 Earl Bootman  
 Dick Draper  
 Robert Koehler  
 Joe Lafferty

Richard Lemon  
 Leo Lipscomb  
 Robert McCrum  
 Billy Moore  
 John Paine  
 Ivan Phillips  
 Julius Peltzman  
 J. C. Piper  
 Park Schaefer  
 Fred Scheidt  
 N. R. Waddington  
 Frank Webb

## Westport Engineers



### OFFICERS

*First Term*

ELVIN VOIGTS .....	<i>President</i> .....	EVERETT DILLARD
HOWARD HISTED .....	<i>Vice-President</i> .....	HOWARD HISTED
BYRON REXROTH .....	<i>Secretary</i> .....	TRACY LEONARD
JOHN OUTLAND .....	<i>Treasurer</i> .....	WALTER WILSON
DICK WOOLF .....	<i>Sergeant-at-Arms</i> .....	ELVIN VOIGTS
BARRETT LANING .....	<i>Critic</i> .....	BARRETT LANING
MILO F. HALE— <i>Adviser</i>		

### MEMBERS

Edward Alexander	Harold Duncan	Tracy Leonard	Byron Rexroth
Meridan Ashbaugh	Arthur Everham	Palmer Lowry	Homer Robnett
Harold Bailey	Lyle Gibbon	Robert McCrum	Tom Samuel
Robert Bucher	Ned Gold	Wilbur Moebus	Norman Sipe
Kenneth Bussell	Jack Harris	Paul Moffett	Raymond Sorensen
Luzier Calvert	Everett Hartman	Howard Monnett	Alfred Tyler
Virgil Carrier	Fred Heryer	Billy Moore	Gilbert Turner
Tom Carroll	Howard Histed	Ford Nelson	Elvin Voigts
John Cleveland	Bill Hogin	Richard Newman	Walter Wilson
William De Baum	Henry Kohler	John Outland	Richard Wolfe
William Dinklage	Orville Keevil	J. C. Piper	
Everett Dillard	Barrett Laning	John Rehner	
Edwin Dunn	Albert Leiberman	Ermel Renken	



# Jules Guerin Art Club



COLORS—*Blue and Blue-green.*  
 MOTTO—*Paint True Reflections.*

## OFFICERS

<i>First Term</i>		<i>Second Term</i>
MARION DILLENBECK.....	<i>President</i> .....	VERA FRAZELL
VERA FRAZELL.....	<i>Vice-President</i> .....	ALICE GROENDYCKE
ISABEL WOOD.....	<i>Secretary</i> .....	RACHEL HAMILTON
DOROTHY MOEBUS.....	<i>Treasurer</i> .....	ELIZABETH LEE
ELIZABETH LEE.....	<i>Sergeant-at-Arms</i> .....	MARGUERITE CLARK
HELEN TRUSTY.....	<i>Critic</i> .....	CATHERINE ANN BRANDT
VIRGINIA CASKEY.....	<i>Scribe</i> .....	VIRGINIA CASKEY
MISS SHELTON WILHITE— <i>Adviser</i>		

## MEMBERS

Virginia Albers	Vera Mae Doug'as	Agnes Karvatt	Ardelle Parsill
Viola Bowman	Margaret Emmert	Katherine Kohr	Margaret Rider
Catherine Ann Brandt	Vera Frazell	Marjorie Landes	Winnifred Scholer
Katherine Burns	Gladys Goff	Margery Lawrie	Helen Strohm
Emma Bush	Alice Groendycke	Elizabeth Lee	Elizabeth Tedder
Virginia Caskey	Dorothy Halbert	Ruth McGeehan	Bernice Teed
Josephine Chambers	Marjorie Hall	Margaret McQuinn	Helen Trusty
Marguerite Clark	Rachel Hamilton	Elaine Meier	Dorothy Ulrich
Lula Conkey	Mary Hoernig	Frances Miller	Elizabeth Webb
Catherine Cornell	Margaret Holmund	Dorothy Moebus	Marjorie Worthington
Marion Dillenbeck	Kathryn Jackson	Glenna Myers	Isabel Wood

## Speech Arts Club



COLORS: *Silver and Red*  
 MOTTO: *The Word Utters the Many Voices of Personality*

### OFFICERS

<i>First Term</i>		<i>Second Term</i>
JUNE McLAUGHLIN .....	<i>President</i> .....	STEWART CHANEY
ORVILLE RICHARDSON .....	<i>Vice-President</i> .....	GEORGIA BRUCE
GRACE DOOLEY .....	<i>Secretary</i> .....	GERTRUDE DOOLEY
LANDRY HARWOOD .....	<i>Treasurer</i> .....	MILBURN JEFFRIES
FRED KELLY .....	<i>Sergeant-at-Arms</i> .....	GIFFORD BURNAP
CONSTANCE NUCKLES .....	<i>Critic</i> .....	VELDA GEBHARD
MISS LEONA SHORT— <i>Adviser</i>		

### MEMBERS

- |                  |                   |                  |                    |
|------------------|-------------------|------------------|--------------------|
| Winifred Beatty  | Virginia Faris    | Virginia Power   | Stanley Field      |
| Betty Birch      | Dorothy Ferguson  | Dorothy Rogers   | Landry Harwood     |
| Ardelle Britt    | Evelyn Forrester  | Winona Shideler  | Milburn Jeffries   |
| Georgia Bruce    | Velda Gebhard     | Sidney Smith     | Fred Kelly         |
| Frances Cast     | Mary Evelyn Hall  | Josephine Sonin  | William Kenney     |
| Sally Chase      | Eleanor Hall      | Irene Van Evera  | Zolley Lerner      |
| Helen Culbertson | Margaret Helman   | Margaret Weckman | Charles Oder       |
| Elinor Curry     | Patricia Herbert  | Miriam Weckman   | Samuel Pearce      |
| Garlyn Dohrer    | Ruth Killiger     | Kathryn Wolcott  | Orville Richardson |
| Gertrude Dooley  | Harriet McClure   | Gifford Burnap   | Hugh Taylor        |
| Grace Dooley     | June McLaughlin   | Stewart Chaney   |                    |
| Winifred Douglas | Constance Nuckles | James Dissman    |                    |
| Miriam Eubanks   | Helen Patterson   |                  |                    |

# Girls' High School Club

## OFFICERS

ARDELLE BRITT .....*President*  
VERAMINA LEWIS.....*Vice-President*  
HELEN LOUISE WOODSMALL.....*Secretary*  
KATHERINE PIPKIN .....*Treasurer*  
ELLEN GRIFFITH .....*Sergeant-at-Arms*  
CECIL MILLER.....*Keeper of the Seal*  
MISS CARROLL HAYDEN .....*Adviser*



# Boys' High School Club

PURPOSE: *To promote the social and moral welfare of the fellows of Westport High School through the creation and extension of high standards of Christian character.*

## OFFICERS

### *First Term*

### *Second Term*

JOHN JOLLEY.....	<i>President</i> .....	LAWRENCE STEVENSON
LAWRENCE STEVENSON.....	<i>Vice-President</i> .....	VERNON KASSEBAUM
LEO LIPSCOMB.....	<i>Secretary</i> .....	PAUL FISHER
ALLAN MOORE.....	<i>Treasurer</i> .....	LILLARD GUTHRIE
WILLARD CARTER.....	<i>Adviser</i> .....	JOHN JOLLEY



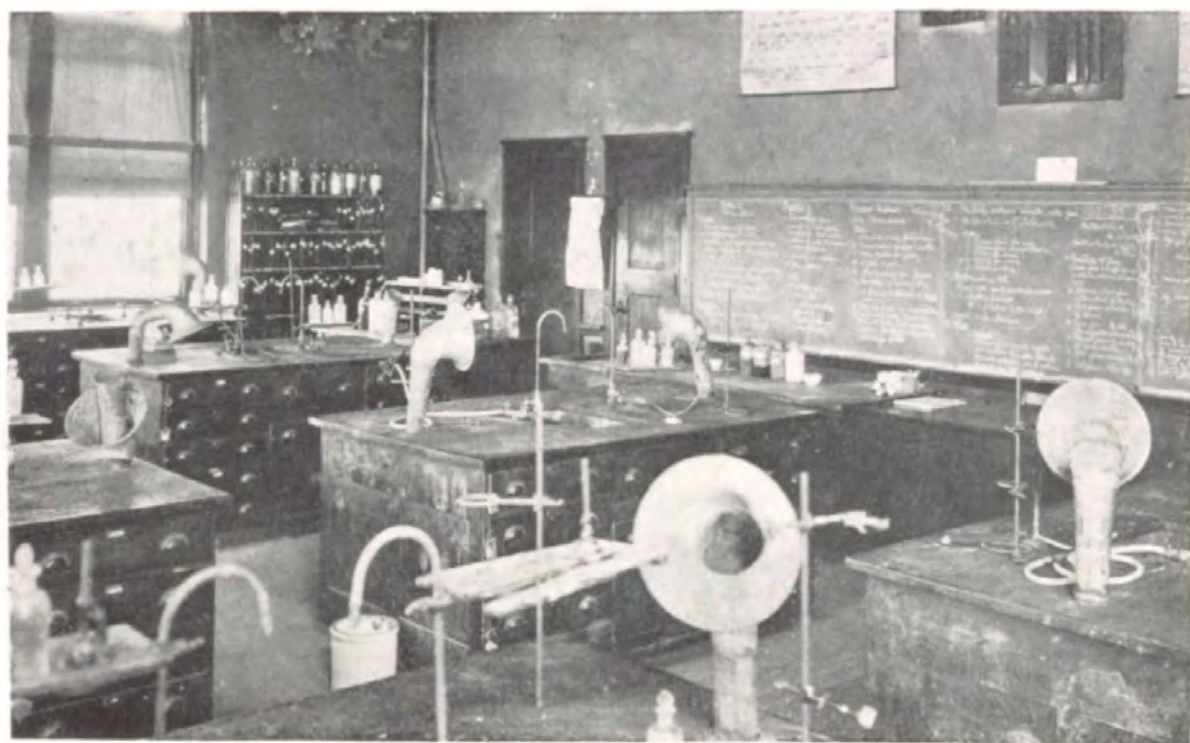
THE HERALD



GIRLS' HIGH SCHOOL CLUB CABINETS



BOYS' HIGH SCHOOL CLUB CABINETS



"HOW DEAR TO OUR HEARTS ARE THE SCENES OF OUR CHILDHOOD"



## The Westport Battalion



HARRIET McCLURE  
Cadet Sponsor Major

Harriet McClure was chosen cadet sponsor major by the vote of the cadets, the faculty and the girls of the school. She received her cap and cape at the Second Annual Indoor Military Circus held April 5.

With many rookies enrolled in the battalion the Westport unit of the R. O. T. C. began a year of arduous training last September. As the result of regular drilling and the faithful efforts of the instructor and the officers the cadets made rapid progress and two companies were organized three weeks after the opening of school. Rifles and uniforms were issued early in October.

Outside the regular drill periods a school for officers was conducted during the fall and rifle teams engaged in target practice. Eight cadets developed such skill as marksmen that they were awarded medals. They are:

Lieutenant Hobart West, Expert Rifleman; Major Harold Lind (team captain); Lieut. William Dunn, Sergeant George Hunter, Sergeant Lewis Shores, Charles Schnider, private, sharpshooters; Lieut. George Arnold, Corporal William Billings, marksmen.



SENIOR CADETS





HAROLD LIND  
Cadet Major

Major P. B. Peyton, Omaha, Neb., assistant officer in charge of R. O. T. C. affairs, seventh corps area, inspected the battalions of the Kansas City high schools Friday and Saturday, April 25 and 26. The inspection covered all phases of military training, including care of equipment, method in drill and perfection in drill. The cadets also were questioned in regard to what they had learned through theoretical instruction.

The final event of the year, the annual spring competition, was held Tuesday, May 13. Westport was second in company drill and won the cup offered by the 110th Engineers. The Manual cadets scored the highest number of points in the meet, Central was second and Westport third. The competition consisted of company, platoon, squad and individual drills.

THE STAFF

- HAROLD LIND .....Cadet Major  
 HARRIET McCLURE .....Cadet Sponsor Major  
 GORDON BOODY .....Cadet Captain—Supply Officer  
 RALPH RENICK .....Cadet Captain—Adjutant  
 VERNON KASSEBAUM .....Cadet Sergeant Major  
 MARVEN REITZ .....Cadet Color Sergeant  
 VICTOR VONCK .....Cadet Supply Sergeant  
 OTTO BOMAN, Sergeant, U. S. A., Instructor





**COMPANY A**

JOHN JOLLEY.....*Cadet Captain*  
 GEORGE ARNOLD, WILLIAM DUNN.....*Cadet Second Lieutenants*  
 MELVIN GENTRY.....*Cadet First Sergeant*  
 LEWIS SHORES, OLEN CURTIS.....*Cadet Platoon Sergeants*  
 CADET SERGEANTS: Clifford Morrow, William Sladek, Ralph Navran, Charles Swearingen.  
 CADET CORPORALS: Spencer, Topping, Moore, White, Oberholtz, Norr's.  
 CADET PRIVATES: Anderson, Bennett, Bowers, Bryant, Bowen, Cloyes, Cohen, Cudworth,  
 Esterley, Erickson, Hall, Heiler, Hirsch, Hume, Jackson, Karnopp, Litovitch, Livingston, Lyons, J.,  
 Lyons, T., Lyon, Minkin, Martens, Pearce, Rentscher, Re'ger, Robertson, Rosenblatt, Shelton, Stout,  
 Thompson, Turner, Weinberg, Wormington.

**COMPANY B**

RICHARD WOLFE.....*Cadet Captain*  
 HAROLD MARTENS, HOBART WEST.....*Cadet First Lieutenants*  
 DAVID LASHLEY, DEWARD LINDSEY, MAURICE BARNES, LUTHER THOMPSON.. *Cadet Second Lieutenants*  
 ROBERT WHITE.....*Cadet First Sergeant*  
 CADET SERGEANTS: Burritt Robinson, Jack Slaughter, Howard Brennan, Chapman Turner,  
 George Hunter, Jerry Pate, Victor Vonck.  
 CADET CORPORALS: Cadlan, Osborn, Brigham, Bootman, Williams, Lacy, Monnett, Lemmon,  
 Jackson.  
 CADET PRIVATES: Allen, Brown, Billings, Brinton, Ballsley, Convirs, Carlson, Clemmons,  
 Carrier, Ebaugh, Elsele, Freedman, French, Grey, Greenfield, Hodson, Hagland, Hanslip, Hall, Halde-  
 man, Harnish, Hogrebe, Hayhurst, Hansen, Krause, King, Lytle, Long, Mann, McWirter, McCutcheon,  
 C., McCutcheon, G., Mierhoffer, Moseley, Peters, Reddish, Richardson, Sawyer, Schnider, Thompson, G.,  
 Weaver, Warner, Wooley.

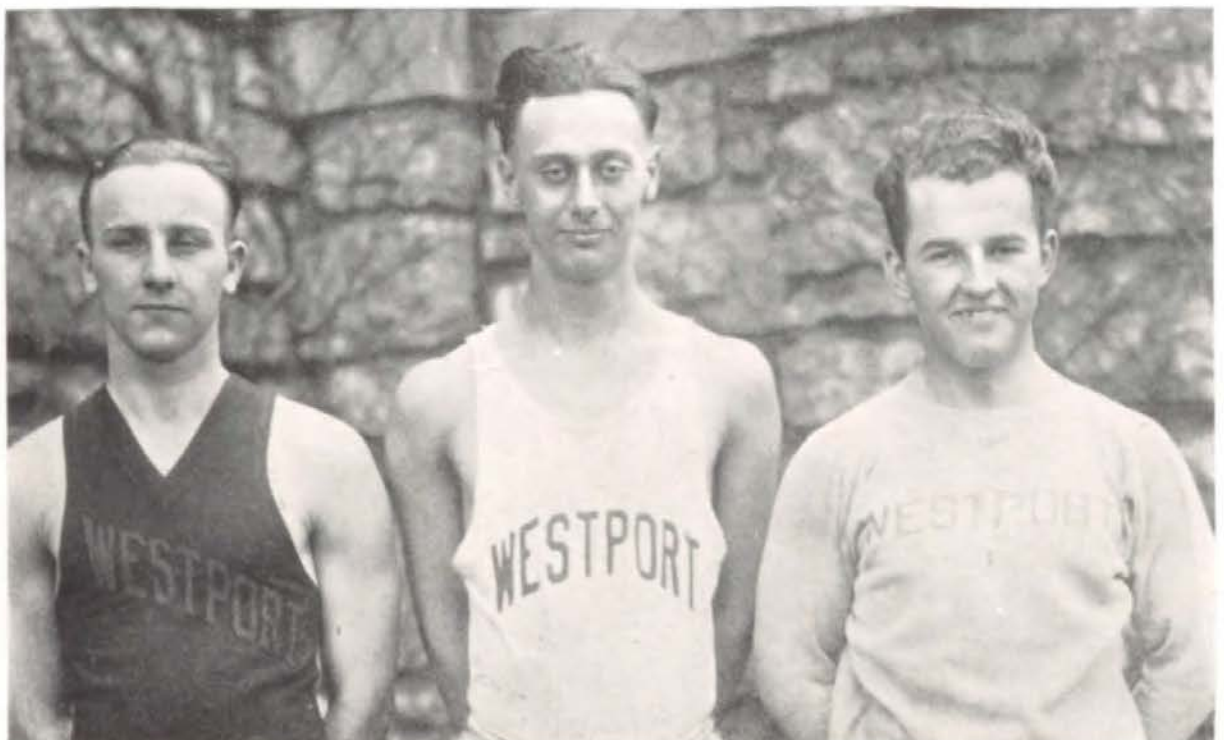


ATHLETICS





GEORGE R. EDWARDS  
*Coach*



THE TEAM CAPTAINS

## Football

### OUT OF TOWN GAMES

Westport .....	0	Higginsville .....	13
Westport .....	14	Carrollton .....	0
—		—	
Total .....	14	Total .....	13

### INTERSCHOLASTIC GAMES

Westport .....	6	Northeast .....	0
Westport .....	7	Central .....	13
Westport .....	0	Manual .....	6
Westport .....	3	Northeast .....	6
Westport .....	2	Central .....	18
Westport .....	0	Manual .....	19
—		—	
Total .....	18	Total .....	62

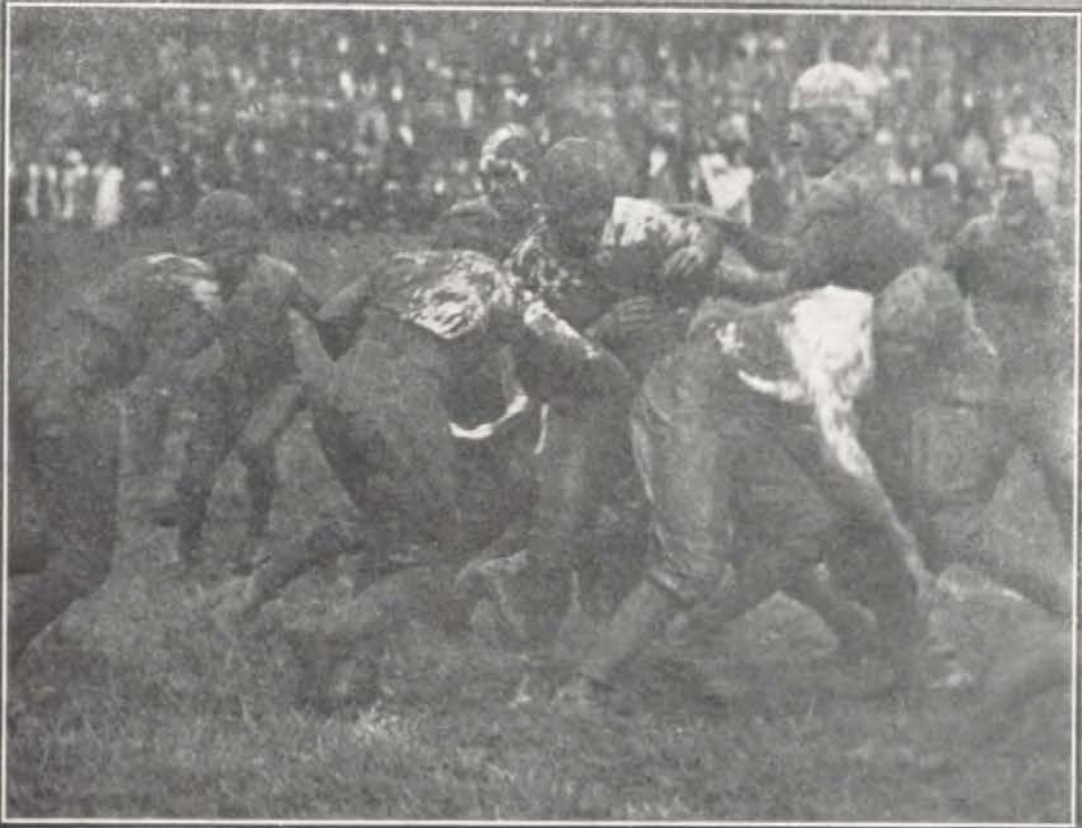
### LUCK AND MUD COUNT

With only three letter men on the squad Westport's prospects were not encouraging when the 1924 football season opened. The other schools in the inter-high league had a larger proportion of seasoned players, giving them an advantage which counted heavily in their favor. Although the Gold and Blue players won only the first game, the scores were close in the three succeeding contests and opposing teams always met determined resistance. Luck, mud and inexperience were factors that must be taken into account in estimating the performances of the Westport team.





## PLENTY OF MUD



PRE-SEASON GAMES

Two games were played with out of town teams before the opening of the interscholastic series. Westport was defeated by the Higginsville team in the first encounter, 13 to 0. The opposing eleven was composed of experienced, hard hitting players, yet they scored only three points on a drop kick until Stevenson was disabled in the third quarter. Starting the last quarter with a rush, Higginsville held the visitors scoreless and increased their lead by ten points.

Carrollton was Westport's victim in the second pre-season game. The first quarter was scoreless. Wachter recovered a fumble punt and crossed the line for a touchdown five minutes after the second quarter opened.



STEVENSON (CAPTAIN)  
*Right Guard*

Two forward passes gave Welsh a chance to carry the ball over in the third quarter. Forward passes and new plays featured the final quarter, but the Blue and Gold made no gains. Fred Dod won praise for his steady, resourceful playing in this game and Buchner's punts averaged forty yards.

WESTPORT WINS FIRST GAME

Playing in a sea of mud, with rain falling continuously, the Blue and Gold eleven outpassed and outpunted Northeast, winning the first game of the inter-high series. The game was played Saturday, October 13.

Welsh acted as captain and showed excellent general-



BUCHNER  
*Right Halfback*





DOD  
Right Tackle

ship. The players readily responded to his directions, giving a well-nigh flawless exhibition of team work. Fumbles were numerous throughout the game, due to the mud that collected on the ball. Both teams played a game of kick and receive, each waiting to pounce upon the other's fumbles.

Westport scored on a blocked punt shortly before the last quarter ended.

#### CENTRAL'S EXPERIENCE COUNTS

The second game ended in disaster. Opposed by Central's experienced players, the champions of 1923, Westport seemed unable to maintain a vigorous offensive and their defense was not of the stone wall quality.

A remarkable incident of the game was the return of Westport's kickoff by Heidelberger for a touchdown. This had a disheartening effect and weakened the Gold and Blue resistance. Both teams covered much territory and the plays were open, but the scores were few.

Buchner made the lone Westport touchdown in the third quarter. He intercepted a Central pass and sprinted seventy yards. Welsh kicked goal.

Punts and passes which resulted in no gains for either team furnished no thrills for the spectators in the last quarter.

#### THIRD A PUNTING DUEL

Another rainy day and a muddy field made the third game a punting duel conducted chiefly by Buchner and Hightower of Manual.



FISHER  
Center







LIPSCOMB  
Center

On account of the rain the players had much difficulty in holding the pigskin and fumbles were frequent. Several times the ball rested near the goal posts of both teams, but only once was it pushed across the line.

The Crimson team made a touchdown in the last quarter on a pass, Hightower to Marron. Following this incident Westport staged a rally, gaining forty-seven yards on passes. In another minute the score keeper would have recorded a touchdown, but the game ended one minute too soon.

PURPLE LINE IMPENETRABLE

With the ball only one yard from the Northeast goal mud-bespattered Westport players hurled themselves vainly against an impenetrable Purple line in the second

quarter of the fourth football game. Nickell had just made a brilliant thirty-five-yard run on a pass from Welsh, depositing the pigskin on Northeast's one-yard line. After three failures to put the ball across, Welsh made a drop kick. A touchdown by Northeast in the third period overbalanced this advantage and all further efforts on the part of the Gold and Blue players were futile.

The field oozed with mud in this game. After the first few downs the players were indistinguishable. Mud, mud was everywhere. Pounds of it clung to shoes and uniforms and regulation football playing was impossible and neither team could show its real ability.



MEISSLER  
Left End



CENTRAL WINS AGAIN

A fumble by Westport on the thirty-yard line resulted in a Central touchdown when the teams met in their second game. The ball was recovered by Oldham, who ran the necessary distance to put it over.

In the next period Central still gained on Westport, using fake plays and an aerial attack. During the last part of the quarter Central started a rally which Westport was unable to stop. Started by the completion of a twelve-yard pass, it ended in thirty-yard run on a fake play with the ball across our line.

Westport's two points was due to a bad punt of Byars' which hit the goal post and bounded back for a touch back. Central scored a touchdown on an overhead attack which gained many yards for them.



NICKELL  
*Left Halfback*

MANUAL TEAM CHAMPIONS

By defeating Westport in the final game the Manual team gained the city championship.

Searching out every hole in the Westport line, the Crimson players plunged through for repeated gains. Their efforts were rewarded by one touchdown in the first quarter.

Neither team scored in the second period, but Grantello made a spectacular run of thirty yards and crossed the line in the third quarter. A blocked punt afforded the Fifteen Street team another opportunity near the end of the game and they scored again. A desperate, last minute come-back by Westport was well started when the score keeper consulted his watch and ended the game.



RAY  
*Left End*





ROACH  
*Right End*

"W" CLUB ORGANIZED

To promote good fellowship among the athletes of the school, to develop higher ideals and cultivate a deeper sense of obligation of the part of wearers of the Westport emblem a club recently was organized by winners of the felt W. Boys who have won W's in any inter-scholastic sport will be admitted. The club will seek to develop material for the teams by encouraging more boys to participate in the various branches of athletics. By upholding high standards the promoters believe that athletes soon will recognize that they owe the school even more than the school owes them.

PLAYERS RECEIVE LETTERS

As a fitting reward for distinguished service on the football field, thirteen members of the football squad received their coveted "W's" in an assembly held Monday, December 17. The school emblem was presented to Lawrence Stevenson, Paul Meissler, Gordon Buchner, George Welsh, Fred Dod, Justin Roach, Paul Fisher, Leo Lipscomb, Merrill Nickell, Jesse Teague, Frank Wachter, Bob Ray and Ed Wolfe.

Stevie, as captain, expressed regret that the team had not done better. Paul Miessler, captain of next year's team, told of the hopes of the fellows for next fall. Harman urged that the same school spirit which carried the team through its trials be present during the basket ball season. The basket ball team then was introduced.

NEW RULES ADOPTED

A new rule book governing inter-school athletic con-



TEAGUE  
*Fullback*





WACHTER  
*Left Tackle*

may not be split or rolled.

Any school which in any manner violates any of the foregoing rules forfeits the contest or event in which the irregularity occurred.

#### THE SECOND TEAM

The second football team was composed almost entirely of new men lacking in experience and it won only one game. It showed much improvement toward the end of the season, however, and several members probably will be qualified to serve on the first team next fall.

Second teams from other high schools furnished the opposition in five games, and the first team of



WELSH  
*Quarterback*

tests has been published under the direction of a joint committee from the four high schools.

Many new rules have been added to the old regulations. In regard to eligibility, three years' participation is allowed instead of four, not counting junior high events. Stricter rules also are used for academic failures. A change in school, public or private, makes a participant ineligible for one year from the rate of re-enrollment.

A new ruling also has been made concerning letters. Athletics is the only activity that can award felt letters with the exception of the shoulder patches worn by the R. O. T. C.

In track meets there now are only two classes, A and B, instead of four. Track pants must be cut square and



WOLFE  
*Left Guard*

Country Day defeated the scrubs by a close margin in one game.

The first game was played with Central, who won 20 to 6. Northeast won the second one by a small score, 7 to 0. The next contest probably was the most disastrous game that a Westport team ever has played, Manual beat the Blue and Gold 46 to 0.

The next game was a tie with Central, and the last, a defeat by Manual, but by a very small score.

The boys who made the second team letters are: Brown, Blanford, Baker, Bock, Daughaday, J. Dod, Jay, Kenton, Pearson, R. Wachter.



E  
A  
T  
'E  
M  
U  
P



T  
I  
G  
E  
R  
S  
!



# Basket Ball

## THE SEASON'S SCORES

### OUTSIDE GAMES

Westport .....	24	William Chrisman .....	30
Westport .....	15	Alumni .....	47
Westport .....	21	St. Joe, Benton.....	25
Westport .....	16	St. Joe, Central.....	11
Westport .....	29	St. Joe .....	20
Total .....		133	
105			

### LEAGUE GAMES

Westport .....	15	Manual .....	11
Westport .....	22	Central .....	24
Westport .....	26	Northeast .....	16
Westport .....	31	Manual .....	14
Westport .....	13	Central .....	39
Westport .....	27	Northeast .....	16
Total .....		120	
134			



### SIX OUTSIDE GAMES

Due to the unusual length of the inter-high basket ball season opportunity was afforded for six games with teams outside the league.

In the annual alumni game the regulars went against a formidable aggregation composed mostly of last year's players. The score tells the story—Alumni 47, Westport 15.

Central High, St. Joseph, was defeated twice and the Kansas City, Kansas, team was one point in arrears in a game with Westport.

William Chrisman High, Independence, and Benton High, St. Joseph, each took a game from Westport early in the season.



BUCHNER (CAPTAIN)  
Guard

### CHAMPIONSHIP HOPES LOOM

Championship hopes loomed when Westport defeated Manual in the opening game of the inter-high series. The contest was fast and furious, keeping players and spectators expectant yet uncertain to the very end.

Manual gained and held a slight lead until the second half, when Coach Edwards' youths hit their winning stride. Two rallies started by the opposition were fruitless, the last spurt being squelched by Jenkins with a long shot.

### CENTRAL TAKES SECOND

If the spectators who viewed all the games were given a chance to express their opinions, probably the majority would pronounce the first game with Central the most successful. From start to finish the two teams were neck and neck, first one in the lead and then the other. Although Central had two points to spare when the game closed, few would say that the Blue and White team really was superior.

The Westport cagers played brilliantly, each winning well deserved applause.

### PURPLE PLAYERS SUCCUMB

By winning the third game of the series Westport tied Central for first place. Northeast succumbed to the attack of the southsiders and Central lost a hard fought battle to Manual the same evening.

The Blue and Gold gained the lead at the very start and



BRADY  
Guard



Day  
Center



JENKINS  
Forward

held it to the end. The first period was filled with long, spectacular shots, Westport hitting the basket with gratifying regularity.

Northeast scored once in the second period and crept upon Westport in the third, but their rally was short lived.

Dod, Buchner and Welch were the outstanding players on the home team.

MANUAL SUBDUED

Manual was subdued once more in the first game of the second round. After this victory Westport still shared the top position in the league with Central.

The Westport cagers played an almost faultless game. Buchner dimmed the shining Manualite star, Hamilton, who the week before had defeated Central single-handed.

In the first counter the teams were fairly evenly balanced, but before the end of the half the game became a one-sided affair, Westport piling up a score of 31 to 14 for the Crimson.



ROACH  
Guard

The basket ball championship hung in the balance until Westport encountered Central the second time. At the end of the first quarter the result was doubtful, the score standing 4 to 4, and then the frightfulness began. The Westport score was thirteen when the playing ceased, but Central had garnered just three times as many points.



SHAWHAN  
Forward

The Blue and Gold basket-tees ended the season with a victory, defeating Northeast. Central won the championship by taking the second game from Manual.

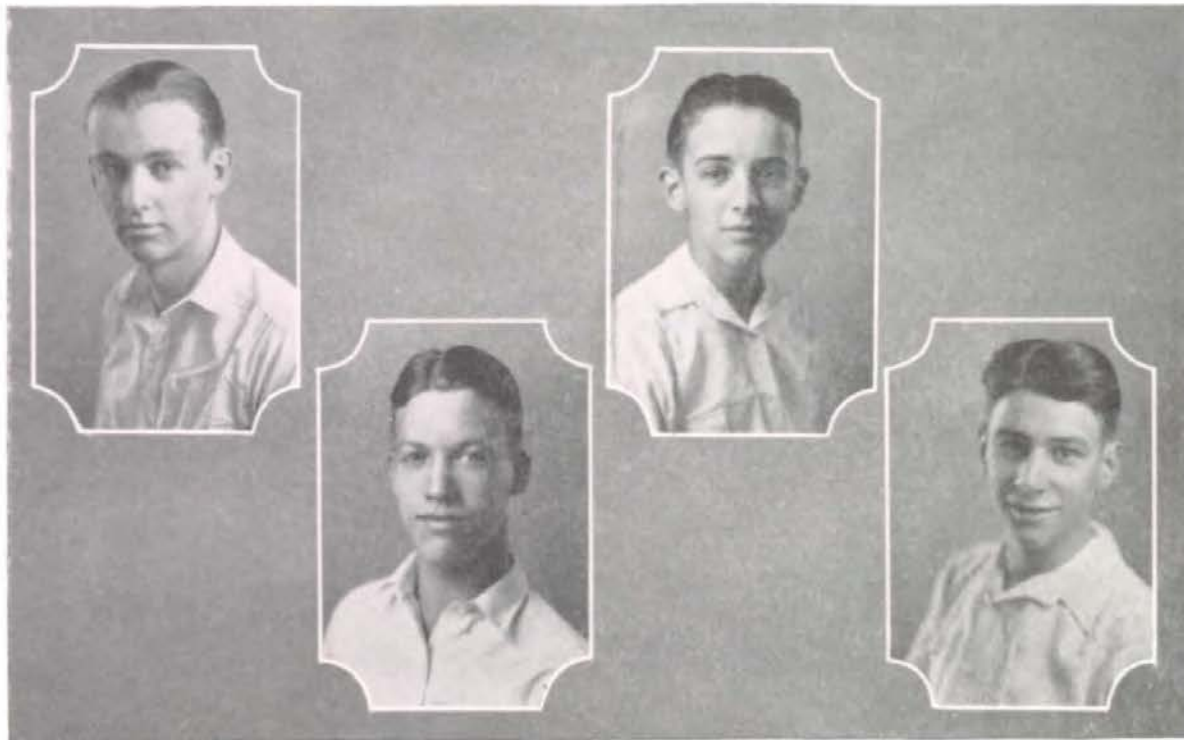
Northeast started the scoring in the first quarter with a field goal. Shawhan, Dod and Welch also tossed the ball through the ring, making the score 7 to 5 in Westport's favor before time was called.

After gaining a slight lead in the second quarter, the Purple players yielded to the fierce onslaught of the Westporters, who piled up twenty-seven points.



WELSH  
Forward





GANGE

DISSMAN

DUER

ODER

CHEERLEADERS



SECOND TEAM



WILCOX AT K.U.

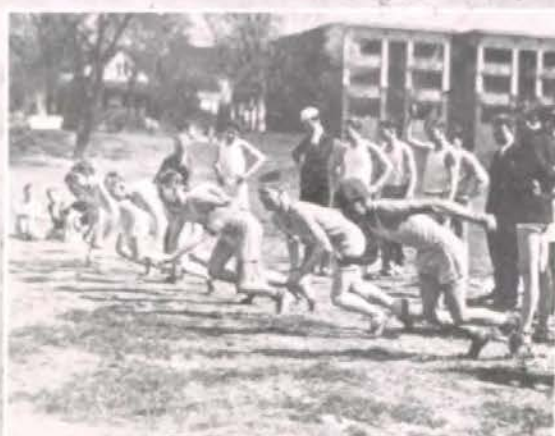
TRACK



MURPHY



MURPHY



100 YARD TRYOUTS



HALF-MILE TRYOUT



RIGG



## Track

The story of the indoor track season is a short one. The Blue and Gold team took third place in the Missouri-Kansas and the K. C. A. C. meets and was fourth in the Missouri Valley meet. In the outdoor contests Westport stock made a decided advance and was holding up well at the close.

The 880-yard team placed second in the K.-U. Relays, being nosed out of the first position by Cedar Rapids. Our medley relay ran fourth in their event.

Although they broke the world's interscholastic record in the 440-yard relay by a tenth of a second at the Drake meet, the Westport runners again were forced into second place by Cedar Rapids. The team was fourth in the 880-yard relay and was awarded second place in the meet.

The dual meet with Central was a profitable experience for Westport. The total number of points was 113 for the Blue and Gold and 87 for Central. Fred Dod set a new school record for hurling the discus. His distance was 110 feet.

In the meet at Columbia Westport's team placed third in its division, collecting 24 points. Northeast earned 40 and Joplin 25.

### THE LETTER WINNERS

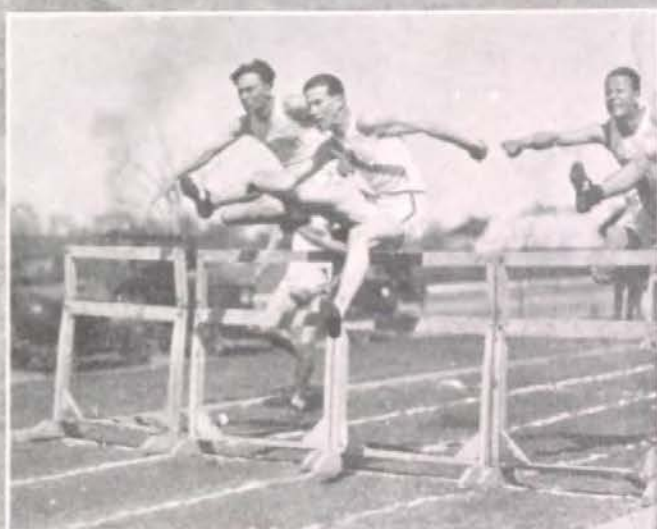
Class A—Wilcox, E. Eaton, Dillard, Black, Daughaday, Berrup, Rigg, Teague, Dod, Buchner.

Class B—Hipple, Whitcraft, Malone, Kemp, Hellman, Rehner, Murphy, Aaron, Scott, Kernberger, Reaveley.





-BLOCK-



-DILLARD-

-BLOCK-

# HURDLERS~



-KIRK-



-DILLARD-



-HELLMAN-

Summary of the Quad:

	"A"	"B"	Total
Northeast .....	42 ½	37 ½	80
Westport .....	35	28	63
Manual .....	21 ½	31	52 ½
Central .....	19	22 ½	41 ½

100-yard dash, class A—Won by Henley (N); Wilcox (W), second; Eaton (W), third; DeMoss (N), fourth. Time, 10 2-5 seconds.

Class B—Won by Daniels (N); Pope (C), second; Rosenheim (M), third; Hipple (W), fourth. Time, 11 seconds.

220-yard dash, class A—Won by Henley (N); Grantello (M), second; Wilcox (W), third; E. Eaton (W), fourth. Time, 23 1-10 seconds; new record.

Class B—Won by Daniels (N); Pope (C), second; Crosby (C), third; Mc-Daniels (N), fourth. Time, 25 1-10 seconds.

440-yard dash, class A—Won by Thelen (N); Kirkpatrick (N), second; Oldham (C), third; Daughaday (W), fourth. Time, made by Grantello, who was disqualified, 53 1-5 seconds.

Class B—Won by Allegri (M); Tutera (M), second; Lester (N), third; Guisinger (W), fourth. Time, 55 4-5 seconds.

880-yard run, class A—Won by Thelen (N); Lewondoski (N), second; Houston (W), third; Bearrup (W), fourth. Time, 2 minutes 7 2-5 seconds.

Class B—Won by Allegri (M); Malone (W), second; Field (C), third; Ruines (C), fourth. Time, 2 minutes 14 2-5 seconds.

100-yard high hurdles, class A—Won by Dillard (W); Smith (M), second; Jenkins (W), third. Time, 14 1-5 seconds.

100-yard low hurdles, class B—Won by Knighton (N); Hellman (W), second; Blauw (C), third; Tuley (C), fourth. Time, 13 2-5 seconds.

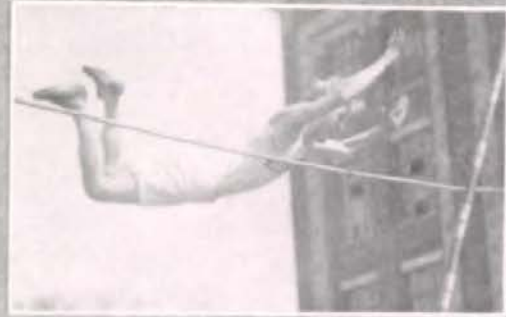


E. EATON

DILLARD



RIGG



TEAGUE

WESTPORT-113.  
CENTRAL-87.



WILCOX

EATON



WILCOX



BEARRUP



WHITCRAFT

220-yard low hurdles, class A—Won by Oldham (C); Thomason (C), second; Dillard (W), third; Koonse (N), fourth. Time, 28 1-5 seconds.

Class B—Won by Rosenheim (M); Knighton (N), second; Sides (N), third; Block (W), fourth. Time, 28 3-5 seconds.

880-yard relay, class A—Won by Northeast (Kirkpatrick, DeMoss, Thelen, Henley); Westport, second, and Central, third. Time, 1 minute 38 1-10 seconds.

Class B—Won by Manual (A. Grantello, Donnici, Tutera, Rosenheim); Northeast, second, and Westport, third. Time, 1 minute 42 2-5 seconds.

Broad jump, class A—Won by Henley (N); Grantello (M), second; Dillard (W), third; Rigg (W), fourth. Distance, 21 feet 8 inches.

Class B—Won by Benton (N); Tuley (C), second; Rosenheim (M), third; Kirk (W), fourth. Distance, 19 feet 10 inches.

High jump, class A—Won by Offutt (N); Blue (C), Norman (M) and Smith (N) tied for second, third and fourth. Height, 5 feet 6½ inches.

Class B—Won by Brouillette (N); Reaveley (W), second; Fields and Tuley of Central, Martin and Tutera of Manual, Boisseau of Northeast and Murphy of Westport, tied for third and fourth place. Height, 5 feet 5½ inches.

Pole vault, class A—Teague of Westport and Smith of Manual tied for first and second; Bates (C), third; Atherton (M) and Offutt (N) tied for fourth. Height, 10 feet 4 inches.

Class B—Won by Blauw (C); Sloan of Northeast and Murphy of Westport tied for second and third; Fry (W), fourth. Height, 10 feet.

Shot-put, class A—Won by Dod (W); Byars (C), second; Burton (C), third; Marriott (M), fourth. Distance, 40 feet 1½ inches.

Class B—Won by Kernberger (W); Rehner (W), second; Ross (N), third; Lux (N), fourth. Distance, 35 feet 6½ inches.



BLOCK

WILCOX

## Tennis



Although but a single event was won in the quadrangular meet the spirit of Westport was far from subdued. Ruth Robeen and Katherine Pipkin carried off the girls' doubles.

Westport is looking forward to next year with excellent players from the Junior and Sophomore ranks coming forward. Those who took part in the meet were:

Girls' Singles—Lorene Wallenstrom, Florence Tennant.

Girls' Doubles—Katherine Pipkin, Ruth Robeen, Katherine Kohr, Margaret McQuinn.

Mixed Doubles—Dorothy Caton, Robert Coerver.

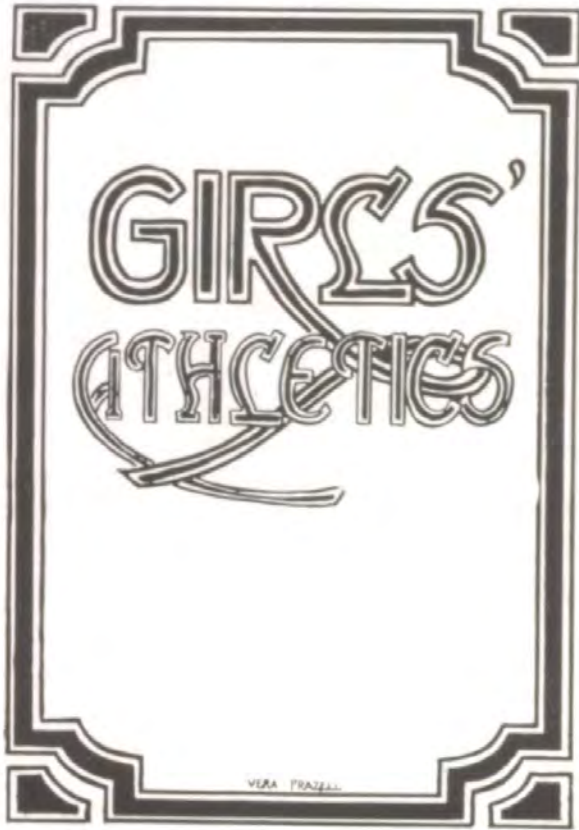
Boys' Singles—Robert Coerver, William Jay.

Boys' Doubles—William Jay, William Henderson, William Simon, William Jenkins.

Substitutes—Kenneth Arnold, Robert MacDowell.

"W" winners were—Katherine Pipkin, Ruth Robeen.







GIRLS'



HOCKEY

GAMES



# Hockey



For excitement, see a hockey game. To see the little ball go racing down the field only to be sent back with a resounding whack furnishes the far-famed "thrill that comes once in a life time." The seniors were particularly good at hitting the ball to the right place at the right time and therefore carried off the championship. The members of the squads were:

**SENIORS:** Helen Larson, Mary Louise Kohler, Katherine Pipkin, Grace Jacque, Catherine Lippincott, Roth Robeen, Alice Lanterman, Dorothy Caton, Katherine Kohr, Erma Wedemeyer, Floy Luker, Helen Marsh, Georgia Bruce, Mildred Robinson (captain).

**JUNIORS:** Ellen Griffith, Charlotte Thompson, Jean Sladek, Helen Elizabeth Brown, Ruth Garst, Roccole Anderson, Mary Ellen Hubbard, Cecil Miller, Margaret Hedges, Pheobe Lighton, Jean McGervey, Ethel Traub, Dorothy Secor, Hazel Anthony, Helen Sweeny, Mildred Kohr, Thalia Keller (captain).

**SOPHOMORES:** Von McKelvey, Florence Tennant, Frances Cunningham, Mina Pierce, Imogene Schultz, Mildred Messmore, Margaret Kalhorn, Margaret Weckman, Eleanor Thompson, Maybelle Chilson, Rebekah Thompson, Lucia Terwilliger, Marion Albert, Virginia Bidwell, Glenna Myers, Dorothy Hinshaw (captain.)

These who won W's were:

**SENIORS:** Katherine Pipkin, Katherine Kohr, Erma Wedemeyer, Helen Larson, Dorothy Caton, Mary Louise Kohler, Helen Marsh, Mildred Robinson.

**JUNIORS:** Mary Ellen Hubbard, Mildred Kohr, Josephine Brown, Ellen Griffith, Ethel Traub, Roccole Anderson, Thalia Keller.

**SOPHOMORES:** Florence Tennant, Von McKelvey, Rebekah Thompson, Dorothy Hinshaw.

### STANDING OF TEAMS

	Won	Lost	Pct.	Total Score
Seniors .....	4	0	1.000	22
Juniors .....	2	2	.500	21
Sophomores .....	0	4	.000	5

The hockey teams took a stride forward by engaging Miss A. Imrie, an English hockey coach, to initiate them into the deeper mystery of excellent hockey playing. Due to her coaching the girls improved rapidly and hockey became more of a pleasure as the ability to play well increased.

## Basket Ball



The teams were as follows:

SENIORS: Catherine Lippincott, Katherine Kohr, Floy Luker, Mildred Robinson, Ruth Robeen, Dorothy Caton, Irma Witherup, Katherine Pipkin, (Capt.), Alice Lanterman, Betty Birch, Margaret McQuinn, Helen Larson.

JUNIORS: Charlotte Thompson, (Capt.), Josephine Brown, Betty Lou Stone, Alice Wilson, Helen E. Brown, Ellen Griffith, Jean Sladek, Thalia Keller, Mary Ellen Hubbard, Ethel Traub, Martha McKeever, Roccle Anderson.

SOPHOMORES: Eleanor Thompson, Margaret Kalhorn, Rebekah Thompson, Florence Tennant, Dorothy Hinshaw, Ruth Messmore, Lucia Terwilliger, Hazel Phillips, (Capt.), Von McKelvey, Virginia Boudin, Elizabeth Kirker, Mary Koernig.

Those who received W's were:

SENIORS: Dorothy Caton, Katherine Kohr, Irma Witherup, Katherine Pipkin.

JUNIORS: Ellen Griffith, Josephine Brown, Mary Ellen Hubbard, Charlotte Thompson.

SOPHOMORES: Margaret Kalhorn, Eleanor Thompson, Dorothy Hinshaw.

### STANDING OF TEAMS

	Won	Lost	Pct.	Total Score
Seniors .....	4	0	1.000	105
Juniors .....	2	2	.500	60
Sophomers .....	0	4	.000	41

## Baseball

Following the play-off of a triple tie the juniors acquired the title of baseball champions for '24. Never before have sophomores, juniors and seniors tied for first place. Two extra games were required to determine the championship.

The squads were:

**SENIORS:** Irma Witherup, Nancy Marshall, Katherine Pipkin, Margaret McQuinn, Mildred Robinson, Ruth Robeen, Mildred Cohen, Katherine Kohr, Dorothy Caton, Pauline Barber, Catherine Lippincott (Capt.), Helen Larson, Lillian Hughes, Lucille Hodge.

**JUNIORS:** Charlotte Thompson, Josephine Brown (Capt.), Alice Wilson, Thalia Keller, Ethel Traub, Rocele Anderson, Hazel Ackerman, Mary Ellen Hubbard, Ellen Griffith, Frances MacArthur, Mildred Kohr, Helen Brown, Dorothy Bachman, Winifred Bickel.

**SOPHOMORES:** Virginia Boudin, Elizabeth Kirke, Margaret Kathorn, Florence Tennant, Eleanor Thompson, Sallie Simons (Capt.), Lucile Terwilliger, Eleanor Dyer, Hazel Phillips, Glenna Myers, Frances Cunningham, Evelyn Llewellyn, Dorothy Hinshaw, Virginia Ledtermon, Von McKelvey.

Those who received W's were:

**SOPHOMORES:** Virginia Boudin, Lucia Terwilliger, Sallie Simons.

**JUNIORS:** Josephine Brown, Ellen Griffith, Charlotte Thompson, Mary Ellen Hubbard.

**SENIORS:** Dorothy Caton, Katherine Kohr, Katherine Pipkin, Nancy Marshall, Irma Witherup, Mildred Robinson, Pauline Barben.

Total scores: Sophomores, 73; Juniors, 65; Seniors, 88.

Katherine Pipkin, Dorothy Caton, Katherine Kohr and Irma Witherup, received the senior pin for winning six felt "W's." Katherin Pipkin has joined the ranks of the Westport Immortals, having won "W's" in four sports.





THE WESTPORT GANG



LEO-JOHN-STEVE

# WASHITA



TUG-'O-WAR



EVERYBODY

# CONFERENCE

# DELEGATION

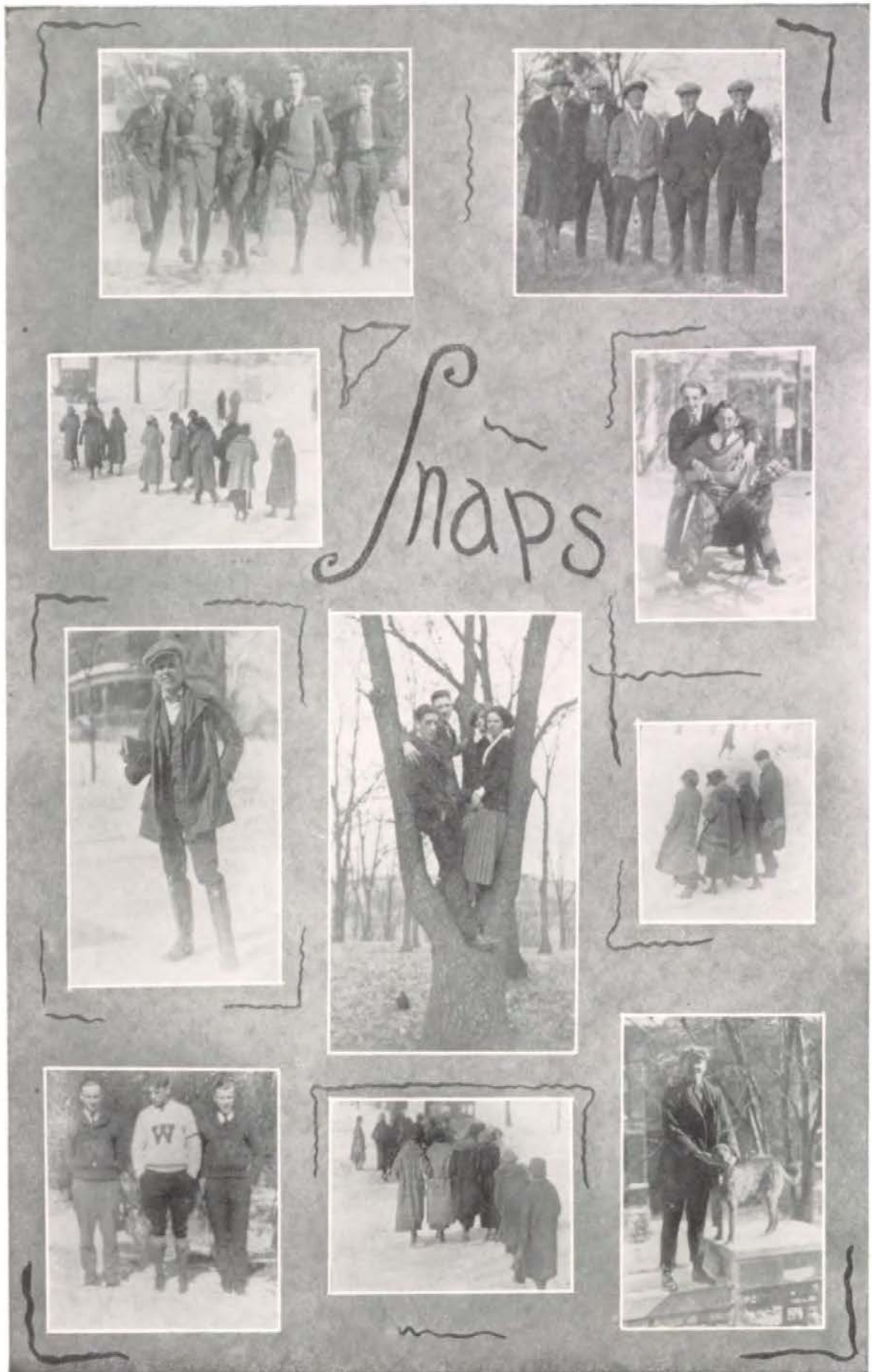


THE CAMP SITE



A decorative frame consisting of a central rectangular area with ornate, rounded corners. This central area is enclosed by a double-line border. On either side of the central area, there are two horizontal lines extending outwards.

MISCELLANY





## Retrospect

September 3—First day of school! Cries of "Hello, Betty, how you've changed; you're surely pretty," etc., etc.

September 19—First Crier of the year. Work of breaking in the new staff members. Leave it to Mr. Booth.

September 20—The "Ki yi yi" boys were chosen today. Gange, Dissman, Oder and Teuscher won the places.

September 26—Densford heads the student council. Congratulations.

September 28—Consolations. Westport loses first game to Higginsville, 13-0, but a poor beginning means a good ending. Here's hopes.

October 5—Ha! We thought so. Westport 14, Carrollton 0. That's the silver lining.

October 8—Pep assembly, football team, R. V. Harman, Coach Edwards, Miss Bradley, cheer leaders—'nuf said!

October 12—Charter clubs hold first meeting. What are we coming to? Each club gets only one meeting a month.

October 13—Football again. Westport opens the inter-high league series with a victory over Northeast, 6 to 0.

October 20—Our old rivals, Central, defeat us, 13 to 7. Oh, well, we can't win all the time.

October 27—Mud, mud, everywhere and not a place that's dry. With such a setting and Manual the principal character, Westport was forced to take a minor part in the great American play entitled "Football." The result was 6 to 0.

October 29—Assembly. Mr. H. C. Harvey gives cuts from Shakespearean plays. Intensely interesting. We also hear from the music department.

November 3—And they beat us again. Northeast 6, Westport 3.

November 7—Christmas play try-out. Very romantic, yes.

November 10—Mountains of chaotic gloom. Central 18, Westport 2.

November 14—Relief for the staff. Miss Bain's junior English class takes over Crier No. 5. Accepts with pleasure.

November 16—The Clay's name becomes mud—Annual game, Irving 33, Clay 7.

November 17—It's hard to say it. Manual 19, Westport 0.

November 26—Speech Arts stages "The Valiant" in assembly. One of the best programs of the year.

November 29—Thanksgiving. One holiday, at least.

December 3—Faculty decides to give honor pins to deserving ones. Diligence always is rewarded, eventually.

December 15—Student council puts on the fifth annual carnival. Very successful; much credit to the leaders.

December 21—Christmas play, "The Romantic Age," appealingly successful. What's in a name?

January 3—Boys' debate try-out. Here's hoping for the Amherst cup.

THE HERALD



January 5—Westport starts out well again; beats Manual in first basketball game.

January 11—The old spirit fights again: Central 24, Westport 22. What a game!

January 14-17 (inclusive)—Mid-year exams, more prayers than ever.

January 25—St. Joe Benton sticks a pin in our basketball; had four more points than we did.

February 1—Beat St. Joe Central, 16-11. That's sending them back right.

February 8—Woman suffrage again puts a woman at the head of the class of '24. Also beat Northeast, 26-16. Hooray!

February 11—Student assembly program in honor of Lincoln. Ambitious young orators.

February 13—Our right honorable cadets are beaming forth under the sponsorship of Harriet McClure, particularly the higher-ups.

February 14—Medsker Christensen wins junior election under the preferential ballot system; the under-graduates are overflowing with originality. Swamped Manual, 31-14. Good old Westport!

February 25—Dr. H. F. Mayer holds our attention in assembly on the subject, "George Washington."

March 1—Wow, but it hurts. Central, 39, Westport, 13.

March 7—Just like last year, etc. Northeast 16, Westport 27.

March 21—All hopes of three debate teams gone to the dogs, both teams lose. Just wait till next year, you who scorn!

March 22—Juniors hold first class mixer, stepping out in their knickers and hair ribbons.

April 2—David Proctor wins honor of representing Westport in the National Oratorical contest.

April 4—Student Council votes to swat vandalism. Go to it. Fifteen for the girls! Both teams win their debate and another cup resides in Westport.

April 11—Round Table vanquishes Clio in literary contest, 87 to 85.

April 25—Debaters receive coveted "W's." Wish we had tried out, too. Clionian-Round Table spring dance. "Papa Loves Mamma."

#### MEMORIES

When the brush of the Master Painter  
 Colors our lives with tinsel,  
 And memories dear grow fainter,  
 Giving way to new scenes sublime,  
 Still thoughts of old Westport will linger  
 And love for the Gold and the Blue  
 Will thrill us and fill us with longing  
 As the old life gives way to the new.

—Ruth Garst, '25.



A MOUTHFUL!

FROM  
THE  
CLASS OF  
'24



A VAMP!



A PAIR!



A VANDALISM!



A NYMPH!

A DRUNK!



A VANDAL!



## Can You Imagine?

- Stew Chaney without Fred Kelly?  
 Johnnie or Jerry climbing the tower?  
 Jimmie Dissman with a crush?  
 Mr. Shouse smoking a cigarette?  
 Dorothy Shields without a date?  
 Joe Lafferty agreeing with any one?  
 Kitty Hemen or Eliz. Wheeler at a wild party?  
 Tom Carroll with coal black hair?  
 Isabel Wood with long hair?  
 Orville Richardson silent?  
 Charles Oder with four perfectly whole limbs?  
 Harry Bennetts dressed as a girl?  
 Some of the Juniors as Seniors?  
 Ardelle walking on her hands, climbing trees, sliding down a bannister?  
 Medsker carrying a girl across a stream?  
 Abbot Parker running the hundred in 10 flat?  
 Malcolm Bliss eulogizing the Clionians?  
 James Chambers in love?  
 A Cli R. T. dance at Mission Hills with the Pennsylvanians?  
 Everett Dillard playing soprano sax?  
 Miss De Witt chewing gum?  
 Berry Haug not talking about a girl?  
 Miss Shelton roller skating?  
 Newell Waddington with the mumps?  
 John Wheeler in anything but a Ford?  
 James Wright at a leap year dance?  
 Howard Histed a Clay?  
 Harold Gange in knickers?  
 Mr. Beckmann donating padlocks to losers of keys?  
 Stanley Knight president of the student council?  
 "Flop" as "Melisande" in the "Romantic Age"?  
 Harriet and the major?  
 Stew Britt a vandal?  
 Bill Teuscher?  
 Helen Louise without Vernon?  
 Dan Uhrig buying more than one gallon of gas?  
 Betty Suddarth a dance censor?  
 Logan Calvert in short pants?  
 Gene Truitt in knickers driving a Ford?  
 Wesley Reed going to a dance?  
 Betty Birch answering to the name "Elizabeth"?  
 Mary Olive falling in a creek?



FAMILIAR  
À  
L'É  
LÈ  
S



## Popular Songs and Composers

Mama Love Papa; Papa Love Mama.....	Vern Kassebaum, and Helen Louise
Lost—A Wonderful Girl.....	Hugh Taylor
My Lovey Came Back.....	Gene Truitt (L. D.)
Mr. Gallagher and Mr. Shean.....	Fred Kelly and Stew Chaney
Stumbling .....	Berry Haug
Parade of the Wooden Soldiers.....	Harold Lind
Seven or Eleven.....	Chuck Dansford
I Didn't Raise My Ford to be a Jitney.....	Bill Teuscher
Oh, How I Hate to Get Up in the Morning.....	Bob Griffith
Dancing Fool.....	Johnnie Calendar
Gee, But I Hate to Go Home Alone.....	Betty Birch
You Know You Belong to Somebody Else.....	Harriet McClure
Old Fashioned Girl.....	Ardelle Britt
Oh, Harold.....	(Any Girl, to the Major)
Where Is My Wandering Boy Tonight.....	Mrs. Taylor (Hugh)
Babbling Brook.....	Helen Trusty
Dapper Dan.....	Dan Uhrig
Peggy Dear .....	Stevie
California, Here I Come.....	Med Christensen
Three O'Clock in the Morning.....	Mac Wallingford
My Man.....	Helen Olsen
In the Evening.....	Dorothy Shields
Little Ford Rambled Right Along.....	Inky Kidd
Why Did I Kiss That Girl?.....	Joe O'Malley
What Does the Pussy Cat Mean When She Says Meow?.....	Kitty Homan
What'll I Do?.....	Milburn Jeffries



HERE



AND



THERE





## Fact and Fiction

William Phillip Teuscher, head of the Public Speaking department, is a Westport graduate of fame. Born in 1906 on a small farm in Arkansas, he followed a line which has proved to be his life work. Those of you who remember Mr. Teuscher in those old Westport days can readily understand his talent and faculty in the line of public appearance when we consider that he has always had an audience from the time he called, "Yo Ho, over yonder," to his pigs and chickens to the present. Whether or not the fact that he had corn for his chickens and that his students are requested to remain in his class the whole hour made any difference in the size of his audience we do not know. Mr. Teuscher says he is an ardent follower of the Humphrey school of public speaking. And certainly his students have gained in freedom, breadth and power.

Ambition for Westport. I hope Westport students become more refined and careful in bringing their planes to school. That Westport students sail down the 39th street airway at breakneck speed, with half a dozen boys hanging on the wings and planes is despicable and against all rules of the school. Also those who come to school in Ford planes without engine covers, fenders and lacking everything but the motor, should have more consideration for the name of our good school. That sort of thing was not done when I went to school.

---

### From the Police Bulletin, April 30, 1937

Charles Francis Densford, well-known peanut dispenser with the Kelly & Chaney fruit store, was pulled in early this morning by officer J. L. Shouse, Jr., for stealing seven quarts of milk from the steps of the Kassebaum Home for Mistreated Armenian Orphans.

Mr. Densford denied all intention of depriving the institute of its nourishment. "I was merely taking the beverage to the rear door," he declared to the judge later, "in order to save Mr. Kassebaum trouble. I had no criminal intentions." Judge Daniel Uhrig intimated that in his opinion the accused's statement was all bull, and soaked him six bits and costs.

### SODA SQUIRT ANNOUNCES ENGAGEMENT TO MILLIONAIRE ACTRESS.

Several months ago, while playing at the Gayoso theatre, Miss Florence M. Harnden, winsome toe dancer with H. Bennett's Snappy Sisters, was irresistibly attracted by a face in the front row. After breaking up the show by falling into the orchestra pit, she learned that the name of the fair Apollo was none other than Hugh Taylor, charming coke slinger for the Lafferty drug store, Third and Delaware. Out of consideration for her position, her affections were reciprocated, and the marriage will take place as soon as the dainty little chorus girl can put the can on several present encumbrances. The couple will spend their honeymoon in Rosedale.



# KEYSTONE HIKES



SLICK-FINGERED GENE, NOTORIOUS SHOPLIFTER CAUGHT IN ACT.

Floorwalkers all over the city have been terrorized for the past three years by a series of daring thefts of quantities of toothbrushes and paper napkins. Police yesterday found out that this was the work of none other than "Slick-fingered Gene," widely known shoplifter and petty embezzler.

The youthful bandit was apprehended by Ev. Weatherly, house detective for the Lieberman-Calendar department store, in the act of deftly removing a costly two-bit toothbrush from a counter. Upon a close examination, it was found that seventeen other articles of a similar nature were cleverly secreted behind the bandit's left ear. Miss Truitt permanently disabled four burly cops who tried to slip her a free ride to the cooler. A great store of stolen safety pins also was discovered at the prisoner's residence.

GOING AT GREAT SACRIFICE !!!

For Sale, one good used flivver. Repainted in 1924. Excellent mechanical condition. Has never yet balked at a hill that was sloping the right direction. Accustomed to being treated gently. A quart of oil free to purchaser.

WM. TEUSCHER, Esquired.

NEW WONDERLAND THEATRE

"THE CURSE OF CAIN AND ABEL"

with McLaughlin and Kelly in title roll

An Albert Schwartzendrumer Humphrey Production

ADMISSION TEN CENTS

CHILDREN FREE

*Book Reviews*—"The Purple Tzzik," by Lawrence Stevenson.

This book is bound in purple leather and would look well in any library. The plot goes as follows: As Solo leaves the party, she is pursued by the Wolves, and in her wanderings, comes face to face with Harry, and blurts out the truth to him. As a result of the former, Oscar wins the bet, and the book ends in a delightful double murder. This is just the kind of volume one wishes for in a free-for-all, and if purchased in sufficiently large quantities at the regular wholesale price, would probably prove of great benefit in relieving the coal shortage.

**Business Directory**

CHRISTENSEN AND DISSMAN—Matrimonial experts. We succeed where you have failed. Send for our booklet entitled "Moonlight," containing numerous poses by the authors from actual experience. Give us a trial.

EVERETT WEATHERLY—Master of the Terpsichorean art. Let me teach you to trip the light fantastic. My correspondence course is highly recommended. Fake testimonials on request.



KASSEBAUM KANDY KITCHEN—A full line of sweetness. Kisses our specialty. They come in all flavors, two sizes, and three temperatures, hot, cold, and indifferent. Free sample.

JOHN CALENDAR, Attorney-at-Law—Let me try that case of yours. Scotch cases given immediate attention. Recipes kept secret. I know my grapes.

McCLURE UNIFORM CO.—Second-hand soldier suits almost as good as new. Gas masks and tin helmets at a bargain. Major's outfit to highest bidder. Entire stock must go. Don't miss this chance.

ROACH POWDER CO.—Let us rid your home of pests. We also carry a line of face and gun powder. We have powdered charcoal in jet, suede, and airedale, for colored patrons.

TEUSCHER AND BLILER—Tinsmiths—Dealers in wedding rings, watches, and Fords. Wrecked flivvers renovated. Try us. Phone for appointment. H. P. 1048.

DOT SHIELDS—Beauty Specialist—I have found the way. Increases the luster of woman's captivating power—the eyes. Send 10c for "Dot's Eye Sparkler." Use my "Beauty Mud" to get that "skin you love to touch."

BRITT AND BRITT—Do you want to be a leader? Send immediately for our book, "Be President or Vice-President." Price, \$1.00. Write today and the book is yours. If not satisfied return book with seal unbroken and try to get your sinker back.

BENNETT'S BOOK OF BUNK—A book of decidedly stale humor. A rare collection of antiques. This book of jokes, including myself, guaranteed to make you groan. Send two bits for your copy before the edition is exhausted.

FORRESTER AND FORRESTER—Zoological Laboratories—We pay highest prices for stray cats and dogs. Be sure of the best grade of sausage. Buy direct from us.

HISTED SCHOOL OF JAZZ—Play some instrument. Buy a saxophone or other stringed foot-agitator. Be the bane of your neighbors. My shortcut to success by injection of jazzmania producing saxophobia is now being used with good results.

BIRCH CANOE CO.—Spend an enjoyable summer on the lakes. Invest in one of my non-sinkable canoes. Send for circular, "Moonlight in a Canoe," posed by Dizzy and Meddy. A free paddle with each canoe. Life preservers extra.

STEVENSON BARBER SCHOOL—Let me teach you the art of hair-bobbing. My experience as a carpenter qualifies me as a shingle expert, and as a man familiar with wood. Good looking Models.—Peggy E., Lady Assistant.



Dumb



Strong!



"Linger Awake"



Guess



IN SUSPENSION



Water, Water



Fairies



Eggs!



ALL Feet



Two of a Kind



Five of Us

HARNDEN SEED CO.—We carry a full line of garden seed. Wild flower corsages our specialty. Dandelions and violets in season. "Say it with Harnden's."

LET A. ALLEN MARCEL YOUR HAIR. A complete line of permanent, temporary, and radio waves. Let Audrey broadcast your waves. Make 'em think you're a sending station. Shampooing and manicuring.—Harold Roberts, Ass't.

DOOLEY SISTERS SCHOOL OF ACTING—We will make an actor or actress of you. We also recommend our department of anaesthetic dancing. We both made our successes behind the footlights at Westport. Nuff said.

Steuart Britt—STAGE HANDS—Fred Kelly

BURNETT ACADEMY OF VOCAL GYMNASTICS—I can teach you to yodle, sing in opera, or be a ventriloquist. I, too, first won renown under a spotlight at Westport. I'm good and I know it. Don't miss this opportunity to win fame and easy coin.

TRUITT AND TAYLOR—Sporting Goods—The latest wrinkle in picnic duds. Clothes for bob-sledding our specialty. Send 1c stamp to cover cost of mailing, etc., of "Bob-Sled Etiquette."

UHRIG SCHOOL OF ORATORY—I can teach you in your spare time how to become a public speaker. Recommendation—graduate Humphrey's School of Oratory.

#### LAMENTATIONS

There is nothing worse  
Than the terrible curse  
Of examination day.

I want to write  
Things that are bright,  
But I don't know what to say.

On my pencil I chew,  
And in spirits blue  
Search my aching brain.

On my brow perspiration  
But no inspiration  
As I hope in vain.

I am plunged in gloom,  
And feel my doom,  
It was hopeless to cram, I fear.

But I solemnly swear  
To thoroughly prepare  
For the coming exam—next year!

—Patricia Herbert, '25.

THE HERALD

# Popular



And no wonder!

The Journal-Post gives its readers a metropolitan newspaper, with an abundance of pictures and features in addition to the most complete local, national and international news of the day.

To those interested in visiting a modern newspaper plant, the Journal-Post extends a most cordial welcome.

Four pages of comics in colors, the 8-page Graveure Photo Section and the metropolitan Magazine section—every Sunday.

## Kansas City Journal-Post

Thirteen big issues—15c a week—delivered to your door.



# William Jewell College

LIBERTY, MISSOURI

Approved by the Association of American Universities. Gives regular courses leading to A. B. degree. Accredited two-year PRE-MEDICAL, PRE-LEGAL, PRE-ENGINEERING, PRE-COMMERCE and PRE-AGRICULTURE courses. Education department prepares teachers for life certificates. Fifty per cent of Faculty have Ph. D. degrees from standard universities of America and Europe. Excellent science laboratories.

PHONE HYDE PARK 2594

FRESH FLOWERS DAILY

## Humfeld-Orear Floral Company

3042 Troost Avenue  
Kansas City, Missouri

WE  
SPECIALIZE  
IN  
WESTPORT HIGH  
WANTS

Always the Newest

WE DELIVER

M. A. MOODY & SON

Hyde Park 3836

3939 Main St. Kansas City, Mo.

AFTER YOU  
GRADUATE

Just remember that the love of flowers accentuates your character and will help you on your life's journey.

"WE STRIVE TO PLEASE"  
**ALPHA**  
FLORAL Co.

1105 WALNUT-PHONES Harrison 1806

# Waggener

ART and GIFT WARES

MONTROSE HOTEL

3971 Main St. Hyde Park 2517

Quill Pens, Fine Stationery, Desk Sets,  
Decorated Crystal Perfume Bottles and  
Puff Boxes

PICTURE FRAMING

Mirrors, Plaques, Lamps and Shades  
made to order. The best and newest  
in commencement gifts. Prices the  
lowest. Services and quality always.

*Special Rates on Frames for the  
Graduating Pictures and Diplomas*

## KANSAS CITY *Business College*

AN ACCREDITED COMMERCIAL SCHOOL  
that has for its object the thorough training  
of young men and women for success in life.  
Bookkeeping, shorthand, touch typewriting,  
penmanship and all commercial branches.  
Free employment bureau. Day and evening  
sessions the entire year. Highest endorse-  
ment from business men and former stu-  
dents. One of the strongest shorthand  
faculties in the entire West, teaching De-  
ment, Pitman, Graham, Gregg and Success  
Shorthand. Graduates placed in positions  
and students aided in defraying expenses  
while taking the course. For catalog ad-  
dress.

C. T. SMITH, President  
1616-18 McGee Street Kansas City, Mo.

Improve Your Game With a  
**THUNDERBOLT**

Tennis Racket

Each \$15.00

Sporting Goods Exclusively

**R.S. Elliott ARMS CO.**

1416 Grand

## PERSONAL LOANS

Convenient Payments

5% ON SAVINGS

Safety—Privacy—Legal

Mercantile Installment Paper Trade  
Acceptances

**CITIZENS LOAN &  
INVESTMENT CO.**

205 E. 10th

Victor 1632

## BO-PEEP CANDY SHOP

Fresh Home Made Candies

Caramels a Specialty  
Light Lunches

TRY OUR FOUNTAIN SERVICE

WE DELIVER

H. P. 7194

3931 Main

“Better  
Dentistry  
for  
Less  
Money”

No Charge  
for Examination

Crowns—Bridgework  
X-Ray—Extracting  
Plates That Fit

Hours 8:30 to 6:00  
Wednesday and Saturday  
Till 8:00 p. m.

**W. R. Wolfe**  
CAREFUL DENTIST

1007 Main St., Second Floor

Compliments of  
WESTPORT  
BOOK  
STORE



KANSAS CITY SCHOOL OF LAW  
29th Year

Prepares students for the practice of law while opportunity is offered for earning a livelihood. Apply at executive offices for all information and for catalogue.

EXECUTIVE OFFICE 718 COMMERCE BUILDING

School and Law Library in the Nonquitt Building 1013 Grand

Muehlebach  
Flower Shop

Located in  
Hotel Muehlebach

TELEPHONE HARRISON 2414

Unerring anticipation gives

Walk-Overs

style leadership each season

Walk-Over Boot Shop

Leven-Leven Walnut  
Kansas City, Mo.

Books! Books! Books!

OF ALL PUBLISHERS

Fountain Pens and Stationery

Welcome to Our Store

THE BOOK SHOP

1107 McGee Street

Kansas City, Mo.



# Work and Play in Telephone Land

The telephone operator works between rests. Most of the time, it is true, she sits at the switchboard putting up the talk tracks for the subscriber, but in between times are periods for recreation, in which she has opportunity for change and relaxation. Attractive rest rooms invite a variety of diversions—sewing, dancing, reading, conversation—or just rest.

Miss Barbara Schultz, School principal at the Long Distance Exchange, at 11th and Oak Streets, Eleventh Floor, will welcome your visit any afternoon from two to five o'clock.



SOUTHWESTERN BELL



TELEPHONE COMPANY

**KNAPP'S  
KNICK-KNACK  
NOOK**

212 EAST 39th—CLOSE TO  
WESTPORT HIGH

Has appreciated your patronage. During vacation, and in the years to come we hope to be pleasantly remembered, and to serve you in a larger and better way, with Quality Candies, Fountain Specialties and Tasty Lunches.



**You'll Be Glad You  
Saved Your Money**

When you are out of work; when Christmas comes, or when you need help.

COME AND SEE US—WE'LL HELP  
YOU SAVE

**FIDELITY SAVINGS  
TRUST COMPANY**

1000 GRAND AVE.

Open Saturdays Till 7:00 P. M.



LOOSE **IP** LEAF

**STUDENT'S  
NOTE BOOKS**



Your stationer carries in stock various styles and sizes of binders with an assortment of sheets ruled for every student purpose.

**IRVING-PITT MANUFACTURING CO.**  
KANSAS CITY, MO.

THE HERALD

# OH HENRY

E. G. Hill Brokerage Co.

# CREME OIL

THE CREAM OF OLIVE OIL SOAPS

The greatest aid in retaining a clear complexion is the use of a pure soap. CREME OIL is a pure soap. Made of Nature's most valuable cleansers Olive Oil and Coconut Oil. Once you try CREME OIL you are immediately impressed with its abundant, quick cleaning lather, that rinses freely and leaves the skin clear, soft and colorful.

PEET BROTHERS CO.



*For Everybody - Everywhere - Everyday*



## Drink More Milk

A survey of 55,000 children revealed the fact that those drinking milk got through the eighth grade two years sooner than those not drinking milk. Also it was found that the milk drinkers surpassed the non-milk-drinkers in every athletic event.

THE CO-OPERATIVE DAIRY ASSN.

From farm to table under one ownership  
3105 Gillham Road  
HYDE PARK 3106

For Convenience,  
Comfort and Cleanliness,  
Electricity Will do  
It Better

Kansas City  
Power & Light Company

1330 Grand Ave. Phone Grand 0060



THE HERALD

For the  
FINEST  
ENGRAVING

-:- personal -:-

-:- business -:-

See the  
INTER-COLLEGIATE PRESS

615 WYANDOTTE ST.  
KANSAS CITY, MO.

Commencement Invitations      Wedding Announcements

Engraved Visiting Cards      Personal Christmas Cards

Business Announcements



Young Men's

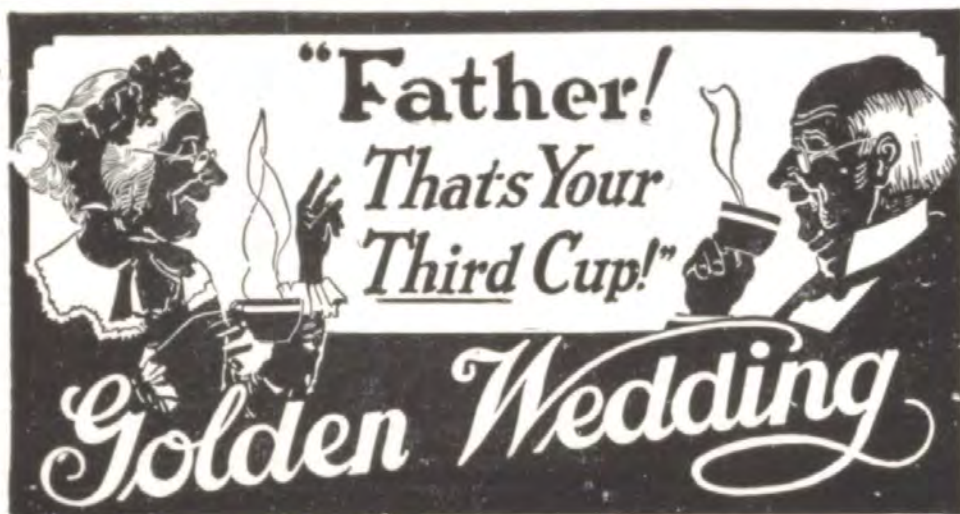
*English Cut*

*White Flannel*

**Trousers**

**\$7.50**

Browning King & Company



LINWOOD ICE CREAM CO.

WHOLESALE AND RETAIL

31ST AND OAK STREETS

SOUTH SIDE BANK

*THE POPULAR BANK*

Located for the convenience of Westport High

*The Popular School*

MAURICE J. McNELLIS, President



# Why is it!

that the telephone downstairs nearly always rings when you are away off upstairs? Have dad put in an extension *Upstairs* and you should bother!



B-R-R-R-R

B-R-R-R-R

KANSAS CITY

TELEPHONE CO.



## Practice At Home

Students of typewriting can make greater progress by home practice. We have special rental rates for students, who will find that it is to their advantage to rent an L. C. Smith typewriter and have it sent to their homes.

Call or phone

**L. C. Smith & Bros. Typewriter Co.**

1020 McGee Street Kansas City, Mo.

Phone Victor  $\left\{ \begin{array}{l} 1195 \\ 1196 \end{array} \right.$

**Paying 6% on Savings**

\$1.00 to \$10.00

RESOURCES \$9,500,000

**SAFETY SAVINGS  
& LOAN ASSOCIATION**

(Mutual Savings Society. Est. 29 years)

900 Grand Ave. (Ground Floor)

SNAPPY FURNISHINGS FOR YOUNG  
MEN AND WOMEN



**TRADERS NATIONAL BANK**  
BRYANT BUILDING, 11TH STREET AND GRAND AVE.  
KANSAS CITY, MO.

*"COURTESY, SERVICE, STRENGTH"*

Commercial—Departments—Savings

Compliments of  
**PEAKE AUTO SUPPLY COMPANY**

# Quality for Fifty-Five Years

The same skill and workmanship prevails in our store as was shown in the manufacture of the Class Pins and Rings for the Senior Class of 1924.

A visit to our new store and China and Gift Shops will convince you of the excellent quality of our merchandise and the exclusiveness of our designs.

VISIT OUR GIFT SHOP

**CADY & OLMSTEAD**

JEWELRY COMPANY  
ESTABLISHED 1870

1009-1011 WALNUT STREET.

Gold and Platinum Goods  
Watches

Silver Smiths  
Fine Stationers



# THE WORLD BOOK

ORGANIZED KNOWLEDGE IN STORY AND PICTURE

TRADE MARK REGISTERED

THE WORLD BOOK IS DIFFERENT

Story Treatment---Programs---Tables and Statistics---Specialists---  
Pictures Index---Panel Headings---Courses of Study Outlines---  
Questioni---Graphics---Maps Services Bulletins for each month---  
Loose-Leaf Annuals for five years.

6528 PAGES—5100 PICTURES  
10 VOLUMES

Recommended by American Library Association  
Recognized as a Standard Reference Work  
"Book of the Presidents"—Free Upon Request

Roach-Fowler Publishing Co.

1020 McGee Street

Kansas City, Missouri

## GREEN JEWELRY COMPANY

Manufacturers of  
FRATERNITY JEWELRY AND CLASS PINS  
of all kinds

*Diamonds Mounted Under Your Own Supervision*

JEWELRY WORK WATCH WORK

Phone Harrison 1253

1104 Walnut St.

Kansas City, Mo.



*The* **BOOKS TRUNK Co.**  
QUALITY LUGGAGE AT FACTORY PRICE  
EXPERT REPAIRING  
NINTH AND MAIN

MOVING	A·B·C	STORAGE
POOL CARS AUTOS AND H.H.C.		SILVER VAULTS MOTHPROOF RUG ROOMS
PACKING	PHONE MAIN	SHIPPING
on 123		

DORE'S BOOK  
STORE

214 EAST 39TH

JUST ACROSS FROM WESTPORT HIGH SCHOOL

SCHOOL BOOKS  
SCHOOL SUPPLIES  
ATHLETIC  
GOODS



WESTPORT '16



TYPEWRITERS  
RENTED

Special Rates to Students  
Authorized Dealers for the  
REMINGTON PORTABLE  
Invincible Rebuilds of all makes  
AMERICAN WRITING  
MACHINE CO.  
905 Grand Ave. Main 2742

McENTIRE & CO.  
JEWELERS

Graduation Gifts, Wedding Gifts  
A Specialty of Gifts for all Occasions

7 WESTPORT AVE.  
(Westport at Main)

Watch, Clock and Jewelry  
Repairing

Compliments of  
KANSAS CITY GAS COMPANY

CONRAD HUG GALLERIES

1011A Grand Ave.  
PICTURES FOR SCHOOLS AND HOMES  
Correct Picture Framing

WE HAVE NO SOLICITOR  
calling on and taking up your time asking for Printing.  
Our Printing Customers come to us again and again be-  
cause we give them the kind of printing they want  
promptly and at a reasonable price.

WE HAVE MANY CUSTOMERS  
who have been with us since we started our business  
*over seventeen years ago.* These customers appreci-  
ate that fair treatment and honest service is the best solici-  
tation and having received that, remain our loyal friends  
and patrons.

A CALL ON THE PHONE, MAIN 1854  
will bring our representative to your office for instructions  
as to your printing.

TRY US ON THE NEXT ORDER

KELLOGG-BAXTER PRINTING CO.  
301-3-5 ADMIRAL BLVD.





## School Days—

How you will cherish their  
memories in days to come!

What a pleasure to recall  
those friendships and those faces.

To keep alive the memories  
of your school days each of your  
friends should have your  
Photograph.

Cornish-Baker Studios

# WASHINGTON UNIVERSITY SAINT LOUIS

Washington University is one of the largest and best equipped Universities in the Middle West. Situated in St. Louis, adjoining Forest Park, it combines suburban location with the social, musical and artistic advantages of a large city.

The main campus consists of 160 acres of high ground upon which 12 large buildings of Tudor Gothic type of Architecture have been constructed. Two new buildings are now under construction and two more have been promised. Two large dormitories for men and one for women are located on the main campus. The Medical, Nurses's Training and the Dental Schools are located in the city where larger clinics are available. The libraries contain over 214,000 bound volumes and 79,000 pamphlets. Laboratory equipment is modern and complete.

The urban location of Washington University makes it possible for all departments of the University to be centralized in one city. Whatever course a student may select, the entire facilities of the University and the city are at his disposal.

*The University includes the following departments:*

College of Liberal Arts	School of Law
School of Engineering	School of Fine Arts
School of Architecture	School of Commerce and Finance
School of Medicine	Henry Shaw School Botany
School of Dentistry	School of Graduate Studies
Division of University Extension	

For Catalog and Full Information, address G. W. Lamke, Registrar.

**WASHINGTON**  

**UNIVERSITY**  
**SAINT LOUIS**

THE HERALD

DILL & COLLINS CO.'S



High Grade Printing Papers

The incomparable papers for  
school and college annuals

Manufactured by

DILL & COLLINS CO.

Master Makers of Quality Printing Papers

PHILADELPHIA



24 YEARS  
OF FINANCIAL  
SERVICE

**Fidelity National Bank  
and Trust Company**

Ninth and Walnut Streets  
Kansas City, Mo.

Storage for Your Short Train Trips  
24-Hour Service—We Never Close

PHONE HARRISON 8223

**The Penn Valley Motor  
Co.**

TONY—ED—CAL

HIGH GRADE AUTOMOBILE  
REPAIRING

*Cushions, Upholstering, Tops, Seat Covers  
Repaired or Made New to Order*


2526 Broadway Kansas City, Mo.

THE POPULAR  
Shop for the Westport Student

Experts in Latest Styles of Hair Bobbing

ARMOUR BARBER SHOP  
Troost at 36th St.

**Wunderlich**

PIANO  COMPANY

1015 GRAND AVENUE

IF YOU SUCCEED:

Your success is cumulative. You cannot progress alone in business and every forward step of yours carries along other peoples on the same road. In this way, your city becomes prosperous and great. In exact ratio to your success or failure your city succeeds or fails.

That's why we, as bankers, desire to see you succeed. That's why we make a point of rendering service to depositors and endeavor to safeguard them from financial reverses.

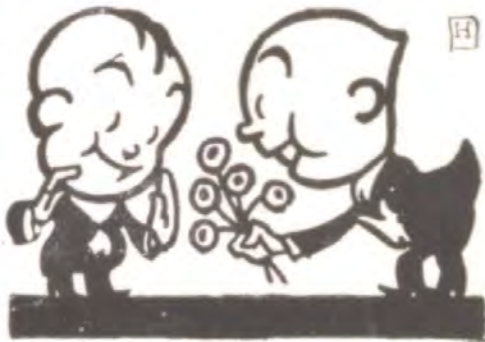
Come in any day. We'll welcome you.

LIBERTY NATIONAL BANK  
NINTH AND WALNUT STREETS

J. E. Hutt—Chairman

P. W. Goebel—President.  
H. J. Coerver—Vice-President  
J. T. Franey—Vice-President

E. E. Rouse—Cashier  
J. G. Kennedy—Assistant Cashier  
E. W. Henderson—Assistant Cashier



Passing Posies

to ourselves may not be good manners,  
but you know already that the BEST

ATHLETIC  
EQUIPMENT

Comes from

**Schmelzer's**

"The Most Interesting Store In Kansas City"

1012-1014 Grand Avenue



Butter cream  
center; covered  
with caramel,  
peanuts and  
chocolate.

LOOSE-WILES COMPANY

Price's **Jack o' Lantern**

WESTPORT AVE. & MAIN



Deft artistry in the details of serving—perfect appointments—refreshments of distinction—beautiful surroundings—all lend their charm to the Jack o' Lantern and make it a peculiarly delightful place in which to entertain your friends.

Rich, unusual tasty cakes and pastries. Our own make of delicious ice cream and ices. Delicatessen specialties of rare goodness and a variety of prices. Chocolates and home made candies without end.

PRICE'S JACK O' LANTERN Westport and Main  
CITY DELIVERY SERVICE TELEPHONE WESPORT 1426

Candies and Popcorn Confections  
**WINNIFRED'S CRISPETTE SHOP**  
Parties and Bazaars Our Specialty  
3911 1/2 Main Street  
Kansas City, Mo.  
H. E. SHANKLIN



## Signatures



## Signatures



## Signatures







