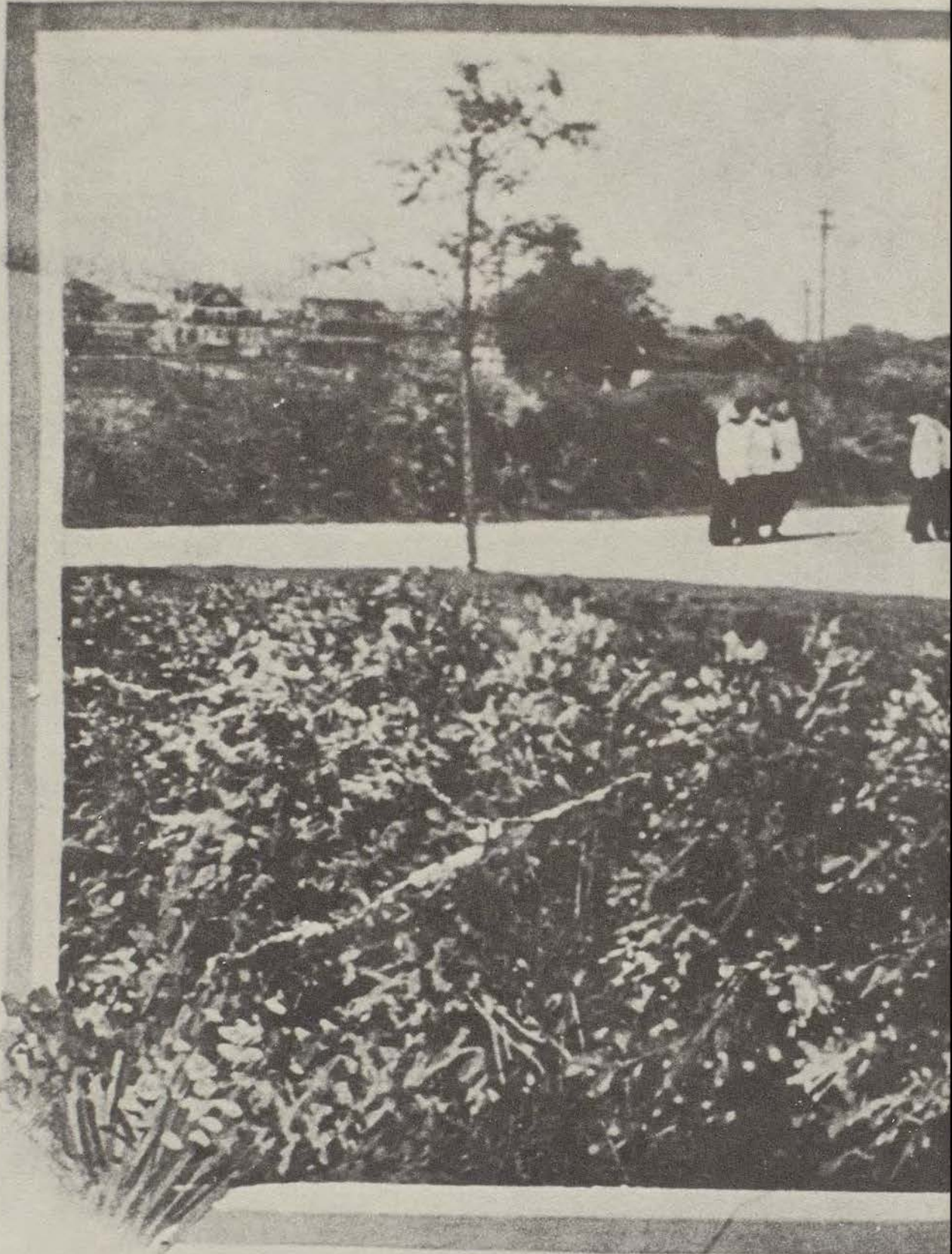


1961

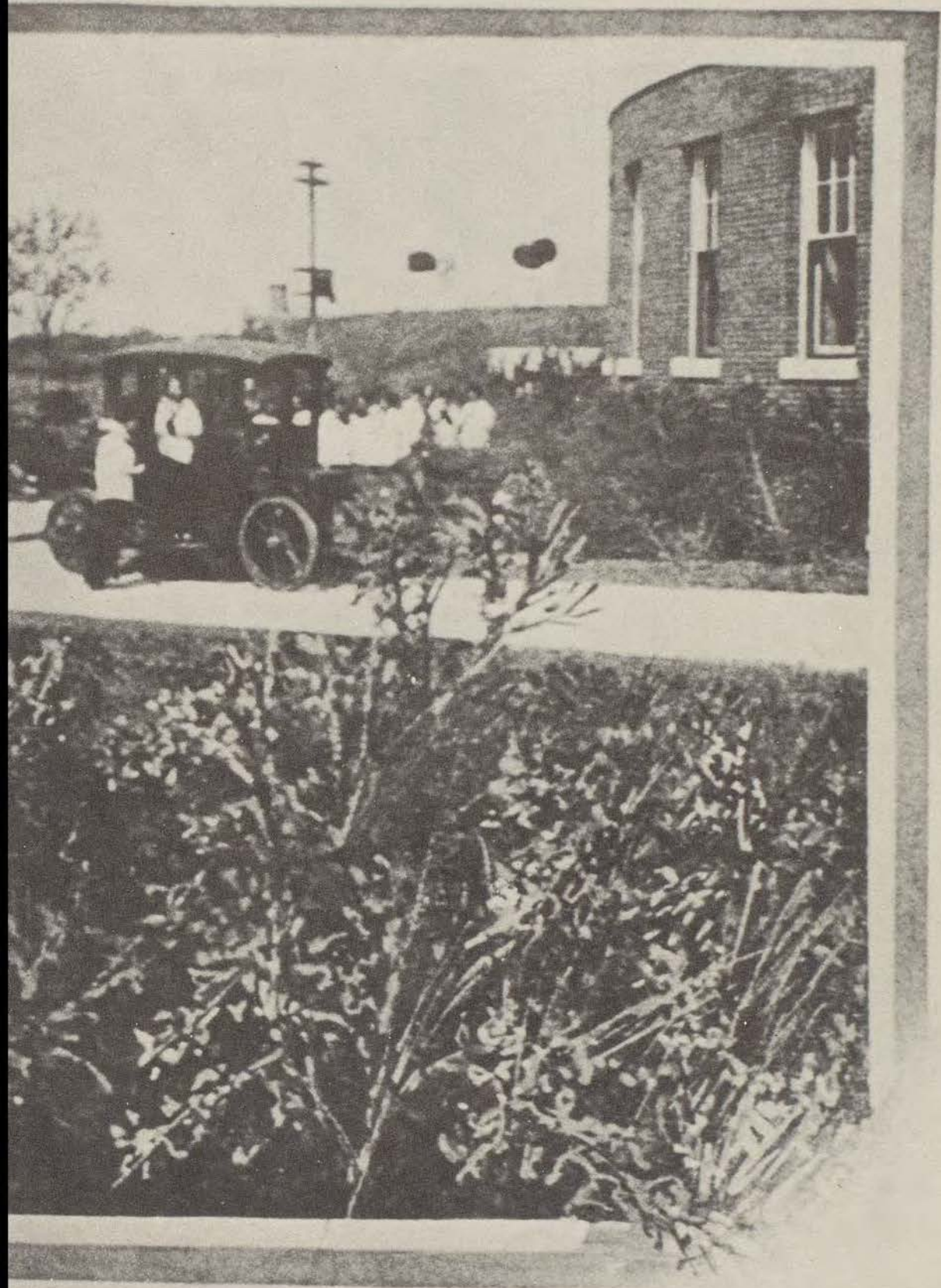
The Avila





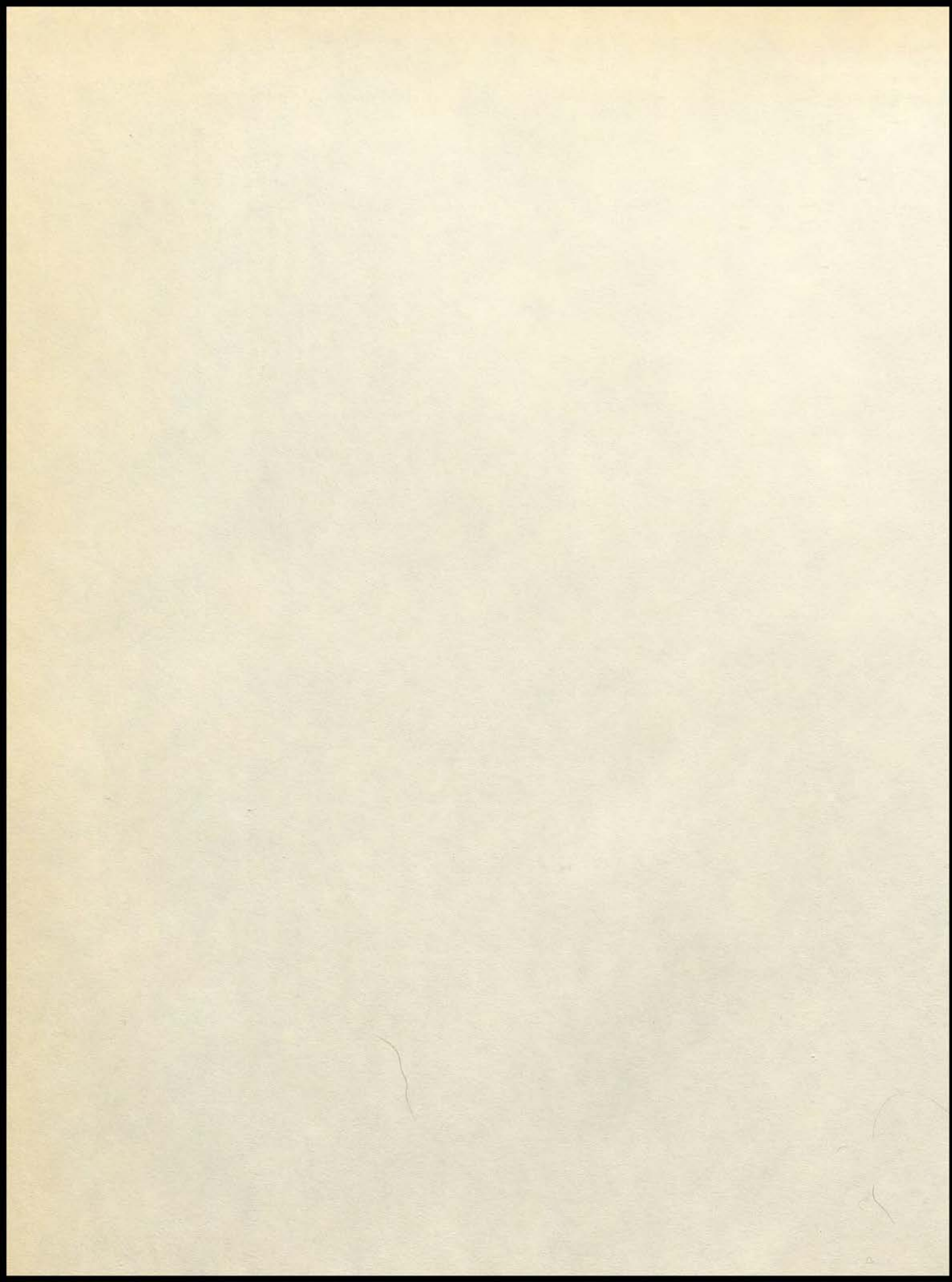
THE WE



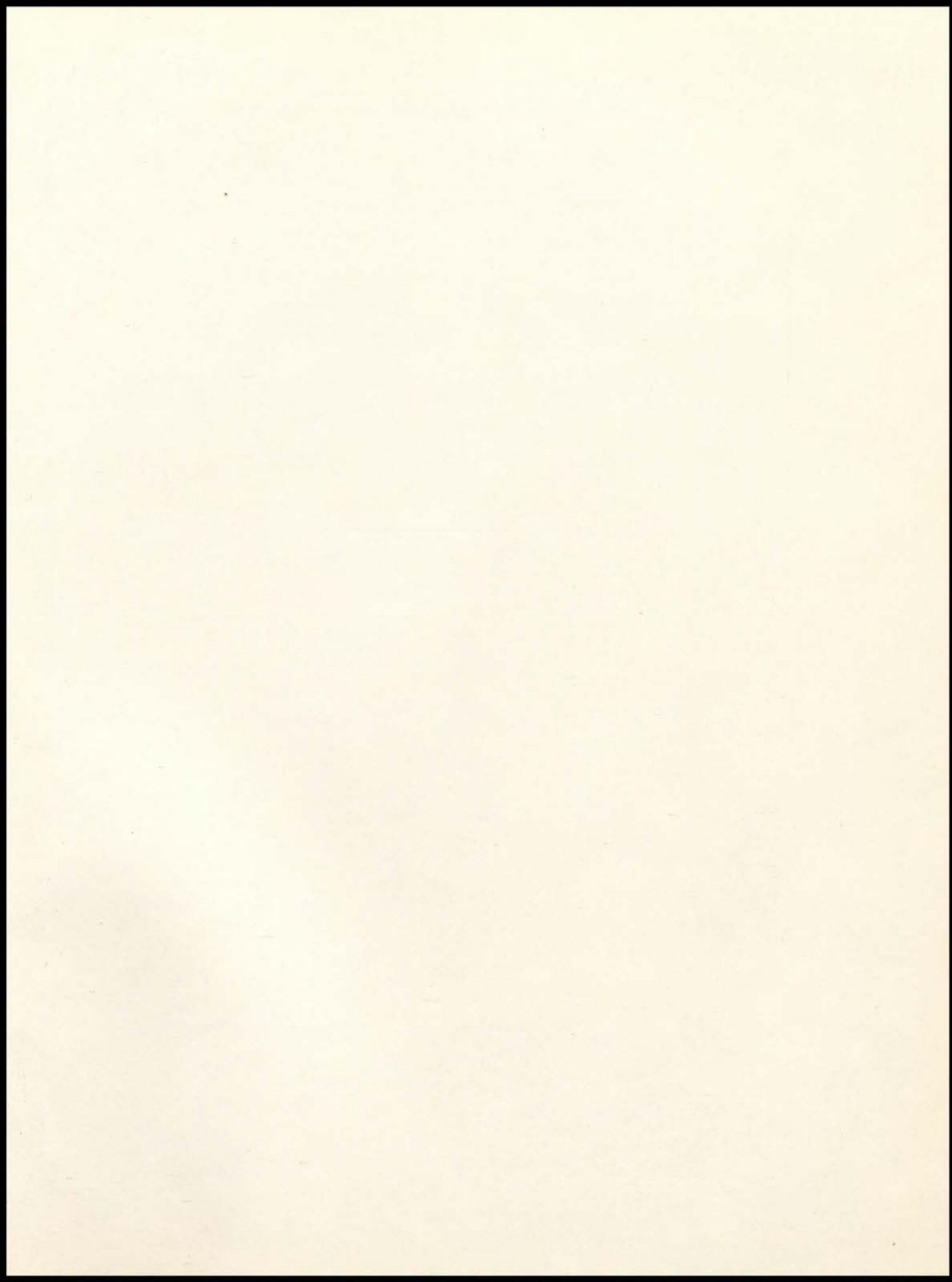


DRIVE

*THEN*







Marita O'Rourke  
CO-EDITOR



Linda Day  
CO-EDITOR

*PRESENT TO YOU*





'61

*THE AVILA*

*St. Teresa's Academy*

*Kansas City, Mo.*



St. Teresa's Academy formally opened October 15, 1866.  
They moved to our present location in 1910.





## TABLE OF CONTENTS

▶ *Tribute*

▶ *Dedication*

▶ *Faculty*

▶ *Class of '61*

▶ *Underclassmen*

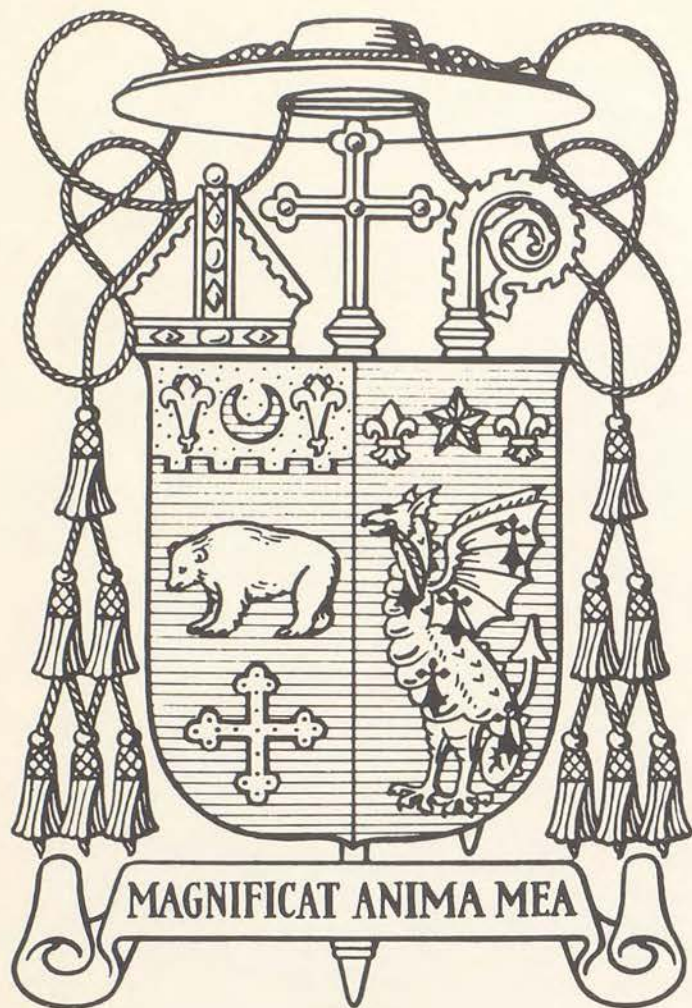
▶ *Curricular*

▶ *Activities*

—*Spiritual*

—*Scholastic*

—*Social*



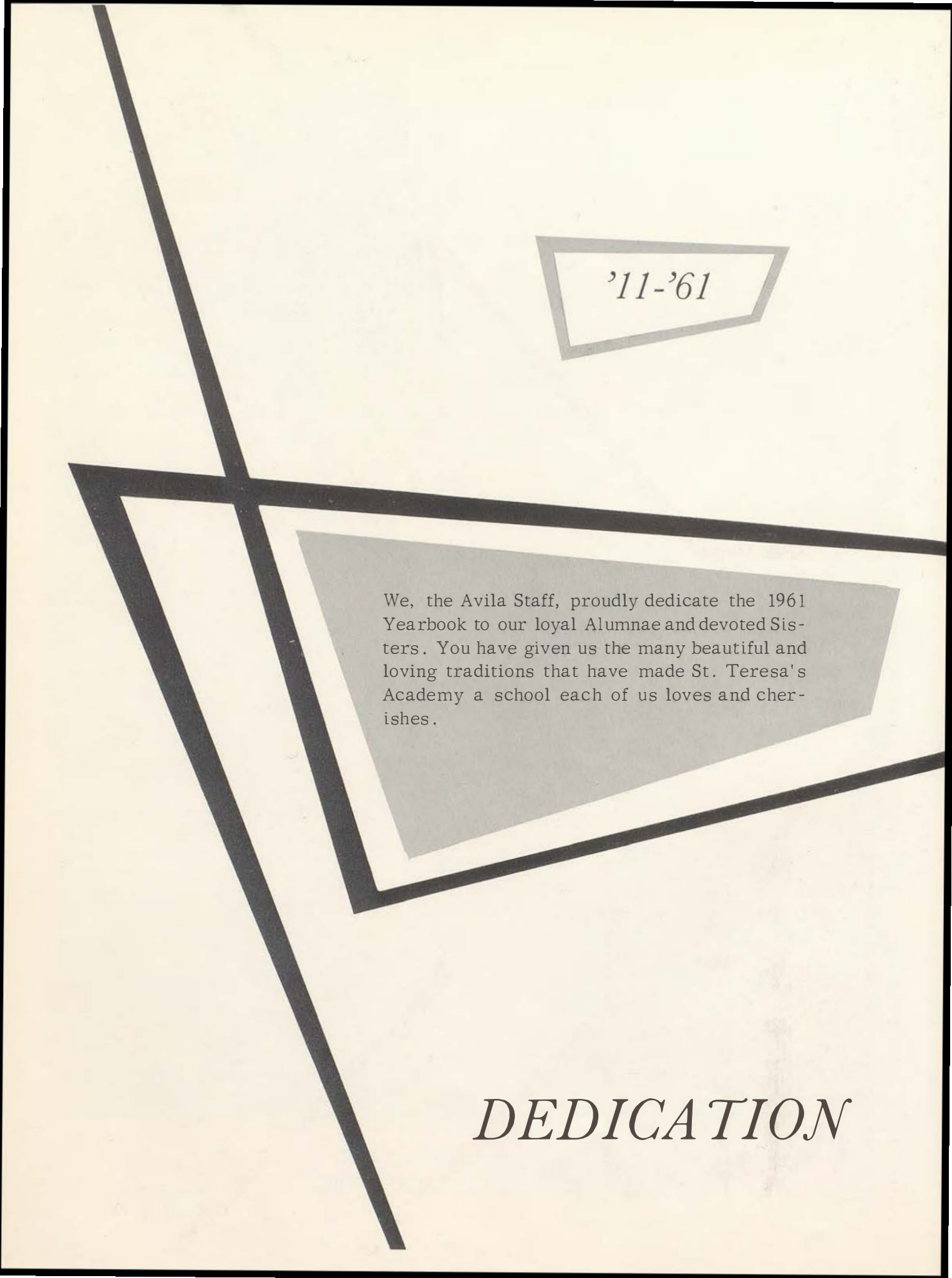
The Avila Staff wishes to pay tribute to our beloved Bishop on the recent honor accorded him by the Holy Father in appointing him a member of the Pontifical Commission for Seminaries and Studies in Preparation for the Second Ecumenical Vatican Council.

*OUR TRIBUTE TO BISHOP CODY*





His Excellency, The Most Reverend John P. Cody, S.T.D., J.C.D., Ph.D., L.L.D.  
Bishop of Kansas City-St. Joseph Diocese



'11-'61

We, the Avila Staff, proudly dedicate the 1961 Yearbook to our loyal Alumnae and devoted Sisters. You have given us the many beautiful and loving traditions that have made St. Teresa's Academy a school each of us loves and cherishes.

*DEDICATION*



*Graduate  
of the*  
**PRESENT**



*Graduate  
of the*  
**PAST**



# FACULTY

SISTER ANNA JOSEPH, C.S.J.  
Principal, Science

REV. JOSEPH NADEAU  
Religion Counselor

REV. HARRY BERENDZEN  
Diocesan Moderator  
Religion Counselor



SISTER M. ROMANA, C.S.J.  
English, Journalism, Speech

SISTER JOSEPH MARIE, C.S.J.  
Science, Clothing

SISTER MARIE de LOURDES, C.S.J.  
French, Latin

SISTER M. ELIZABETH, C.S.J.  
Mathematics

SISTER M. SABASTIAN, C.S.J.  
Remedial Reading

SISTER JOAN TERESE, C.S.J.  
Business Education, Religion  
Secretary to Principal

SISTER M. ALPHONSA, C.S.J.  
English

SISTER M. DA MIEN, C.S.J.  
English

SISTER ST. PATRICK, C.S.J.  
English

SISTER JOAN LOUISE, C.S.J.  
Art

SISTER VITA MARIE, C.S.J.  
Latin, Religion

MRS. PHILIP ANDERSON  
Mathematics, Science

MRS. JOSEPH BREHMER  
Mathematics, Business Education  
Religion

MRS. JOHN SULLIVAN  
Latin, Speech

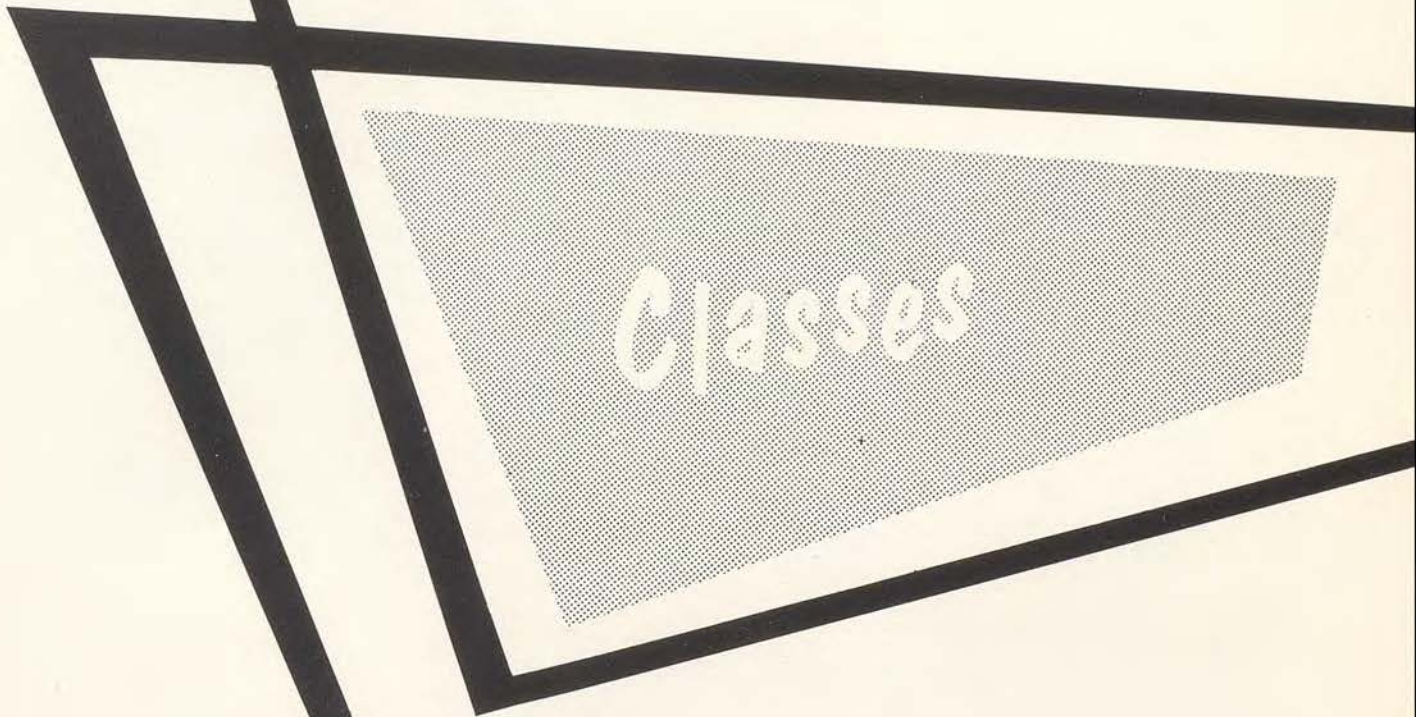
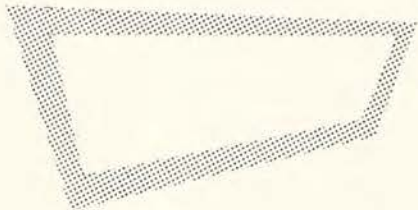
MISS PAULINE REARDON  
Health, Physical Education

MISS SUE CHRISTENSON  
Health, Physical Education

MRS. ESTO BERKEY  
Social Studies

MISS ANN WEBSTER  
Social Studies, Speech  
Religion





Classes

THE

S  
E  
N  
I  
O  
R  
S  
  
OF

TONI KLEIN  
President



JOANNE WOSTER  
Treasurer

BARBARA MERLI  
Secretary



MARILYN HARRIS  
Vice-President

1  
9  
6  
1

THE SENIOR CLASS



BARBARA ANTONELLO



JANET ALLEN



MICHELE BAILEY



MARJORIE BAUER

NAN BEST





ANN BUTLER

SHARON CALLOWAY



JILL CHURCHMAN

KAREN CONROE



JODY CLUNE





CATHY EMERT



LINDA KAY DAY



KATHY FISHER



SUZANNE FLANNER

SUSAN FLATLEY





SANDY FLYNN

KATHY FOGARTY



MARIE GAINEY

MARGAY GREEN



PHYLLIS GRAVINO





ANN HAGER



TERESA HAAKE



PATTI HOOPER



MICHELE HUGHES

SUZANNE KELLY





DARLEEN KERWIN

NANCY KINGSLEY



SANDY KIUG

DONNA LODDE



DONNA SUE LOCHERT



J. E. GRIFFIN APOTHECARY

208 E. 11ST.

HA 1-1530



SUE MAGUIRE



JOANNE LYNCH



MARGARET MALLORY



RITA MARKOVICH

MARGIE MARTIN





MARCELINE McCONNELL

SHEILA McC RATH



MARY McMAHON

VIRGINIA MELZAREK



MARTHA MEAGHER



MARY RITA MILLER



MARILYN MILLER



MARY MARGARET MORAN



PEGGY SUE MORGAN

THERESA MORRIS



DR. AND MRS. J. E. GRIFFIN JR.

1004 W. 52 ST.





JOANNE MOYER

JULIE MURPHY



KATHY NEWTON

DIANE O'BRIEN



HELEN NOTHNAGEL



FRIEND OF PAM

KATHY O'CONNOR



JULIE O'CONNOR



KATHERINE O'LEARY



MARCIA O'NEIL

MARITA O'ROURKE





JANET ORSCHELN

ELENA O'SHEA



KAROL PETERSON

KATHY PORN



MARGARET POLLOCK





CECELIA RUHLMAN



KATHY RICHARDS



ESTHER RYAN



ANITA SCHMIDT

JULIE SHEEK



SALLY SIGOURNEY



CAROL SOBALVARRO



SHARON SMART



MARGARET SOWERS

JANE STADLER



SUE STEPHENSON



SUSAN ST. CLAIR



PAT SWEENEY

FRIEND OF PAM

PONCA GRAIN CORP.





NANCY TURNER



ANNE TRIPLETT



MARY LOU WATERS



KRESZENZ ZACHER



JUDY HIGGINS

# THE SENIORS HISTORY

## JANET ALLEN

Scholarship 1, 2, 3, 4; Sodality 1, 2, 3, 4; S. S. C. A. 4; C. S. M. C. 1, 2, 3, 4; Athletic Club 2, 3, 4; Classical Club 3, 4; Math Club 2, 3, 4; Speech Club 4; Catholic Community Library Representative 4.

## BARBARA ANTONELLO

Class Secretary 2; Sodality 1, 2, 3, 4; C. S. M. C. 1, 2, 3, 4; Athletic Club 1, 2, 3, 4; Glee Club 2, 3, 4; Ensemble 3, 4; French Club 4, President 4; Classical Club 3, 4; Math Club 3; Speech Club 4; N. C. M. E. A. 2, 3, 4; DART Staff 4; Press Convention 4; STA Quartet.

## MICHELE BAILEY

Apostleship of Prayer 2, 3, 4, Secretary 4, Promoter 4; C. S. M. C. 1, 2, 3, 4; Glee Club 3; Ensemble 2; Speech Club 4; Library Club 4; Library Assistant 4; AVILA Staff 4.

## MARGORIE BAUER

Sodality 1, 2; C. S. M. C. 1, 2, 3, 4; Glee Club 4; Math Club 2, 3, 4; Library Assistant 4; Library Club 4.

## NAN BEST

Transferred from Southwest 2; Apostleship of Prayer 2, 3, 4, Promoter 4; C. S. M. C. 2, 3, 4; French Club 4; Math Club 2, 3; Speech Club 4; DART Staff 4; Press Convention 4; Pep Club 4.

## ANN BUTLER

Sodality 1, 2; C. S. M. C. 1, 2, 3, 4; Math Club 3; DART Staff 4.

## SHARON CALLOWAY

Sodality 1; Apostleship of Prayer 2, 3, 4; C. S. M. C. 1, 2, 3, 4; Business Club 4, Treasurer 4; Math Club 3; Speech Club 4; Library Club 3; DART Staff 4; Press Convention 4; De La Salle Homecoming Attendant 4.

## JILL CHURCHMAN

Sodality 1; Apostleship of Prayer 2, 3, 4, Promoter 4; C. S. M. C. 1, 2, 3, 4; Glee Club 4; Business Club 4; Speech Club 4; Auto Show Queen 3; DART Staff 4; Press Convention 4; Pep Club 4.

## JODY CLUNE

Sodality 1; Apostleship of Prayer 2, 3, 4, Promoter 4; C. S. M. C. 1, 2, 3, 4; Athletic Club 1, 2, 3, 4; Business Club 4; Speech Club 4; Auto Show Princess 2; Rockhurst Homecoming Queen 3; AVILA Staff 4; Press Convention 4; Pep Club 4.

## KAREN CONROE

Transferred from Hogan High School 2; Apostleship of Prayer 2, 3, 4; Math Club 3; Speech Club 4.

## LINDA KAY DAY

Sodality 1, 2, 3, 4; C. S. M. C. 1, 2, 3, 4; Athletic Club 4; Student Council 4; Glee Club 4; Ensemble 3; N. C. M. E. A. 3; Math Club 3; Speech Club 4; AVILA Attendant 3; AVILA Staff 4; AVILA Co-Editor 4.

## CATHY EMERT

C. S. M. C. 1, 2, 3, 4; Glee Club 4; Ensemble 3; Classical Club 3.

## KATHY FISHER

Class President 3; Apostleship of Prayer 1, 2, 3, 4; C. S. M. C. 1, 2, 3, 4; Student Council 3, 4; Glee Club 2; Ensemble 2, 3; French Club 4; Math Club 2, 3; N. C. M. E. A. 1, 2; DART Staff 4, DART Co-Editor 4; Press Convention 4; Pep Club 4.

## SUSAN FLANNER

Apostleship of Prayer 2, 3, 4, Vice-President 4, Promoter 4; C. S. M. C. 1, 2, 3, 4; Glee Club 3, 4; Ensemble 2; Speech Club 4; Library Club 4, Library Assistant 4; AVILA Staff 4; STA Quartet 4; Pep Club 4.

## SUSAN FLATLEY

Sodality 1; Apostleship of Prayer 2, 3, 4; C. S. M. C. 1, 2, 3, 4; Ensemble 2; Math Club 2; Glee Club 3; Ensemble 2; Math Club 2, 3, 4, President 4; Speech Club 4; Library Club 4, Library Assistant 4; DART Staff 4; Pep Club 4, Vice-President 4.

## SANDY FLYNN

Transferred from Bishop Miege 2; Class Vice-President 1; Apostleship of Prayer 1, 3, 4, Promoter 4; C. S. M. C. 1, 3, 4; Business Club 4; Speech Club 4; Art Club 3; Auto Show Princess 2.

## KATHY FOGARTY

Class Vice-President 3; Sodality 1; Apostleship of Prayer 2, 3, 4, Promoter 4; C. S. M. C. 1, 2, 3, 4; Student Council 4; Athletic Club 2, 3, 4, President 4; French Club 4; Math Club 3, Vice-President 3; Speech Club 4.

## MARIE GAINERY

Sodality 2, 3, 4; C. S. M. C. 1, 2, 3, 4, Treasurer 3; Student Council 4, President 4; Athletic Club 4; Glee Club 3, 4; Ensemble 4; Speech Club 4; Representative of STA to Southwest Youth Court 4; Prom Attendant 3; AVILA Attendant 2.

PHYLLIS GRAVINO

Apostleship of Prayer 2, 3; C.S.M.C. 1, 2, 3, 4; Glee Club 3, 4; Classical Club 3, 4; Business Club 4; Pep Club 4.

MARGAY GREEN

Sodality 1, 2, 3, 4; C.S.M.C. 1, 2, 3, 4; French Club 4; Speech Club 4; Art Club 2, 3.

TERESA HAAKE

Sodality 1, 2, 3, 4, Unit Leader 3, Recording Secretary 3; C.S.M.C. 1, 2, 3, 4, Vice-President 4, Representative 2; Glee Club 2, 3, 4; Ensemble 2, 3; Math Club 3; Speech Club 4; Library Club 3; N.C.M.E.A. 2, 3; DART Staff 4; Pep Club 4; May Court 2, 3.

ANN HAGER

Sodality 1; Apostleship of Prayer 2, 3, 4, Promoter 4; C.S.M.C. 1, 2, 3, 4; Business Club 4, Vice-President 4; Speech Club 4; DART Staff 4; Press Convention 4; Pep Club 4.

MARILYN HARRIS

Class Vice-President 4; Sodality 1, 2, 3, 4; C.S.M.C. 1, 2, 3, 4; Glee Club 3, 4; Ensemble 1, 2, 3; Math Club 3; Speech Club 4; Library Club 3, Library Assistant 3; N.C.M.E.A. 3, 4, Representative 3.

JUDY HIGGINS

Transferred from Southwest 3; Class Secretary 2; Apostleship of Prayer 2, 4, Promoter 4; C.S.M.C. 1, 2, 4; Athletic Club 2; Math Club 2, 4; Speech Club 4, Vice-President 4; DART Staff 4.

PATTI HOOPER

Sodality 1; Apostleship of Prayer 2, 3, 4; C.S.M.C. 1, 2, 3, 4; Student Council 4; Athletic Club 2, 3, 4; Speech Club 4; Art Club 2, 3, President 2; Library Club 4, President 4, Library Assistant 4.

MICHELE HUGHES

Sodality 1; C.S.M.C. 1, 2, 3, 4; Ensemble 3; French Club 4; Speech Club 4; Art Club 3, 4; Library Club 4, Library Assistant 2, 3; AVILA Staff 4.

SUZANNE KELLY

Transferred from St. Pius X High School, Atlanta, Georgia 3; Apostleship of Prayer 3, 4; C.S.M.C. 3, 4; French Club 4; Speech Club 4; Art Club 4; DART Staff 4.

DARLEEN KERWIN

Apostleship of Prayer 2, 3, 4, Promoter 4; C.S.M.C. 1, 2, 3, 4; Student Council 3, Representative 3; Glee Club 3, 4; Ensemble 2; French Club 4; Math Club 3, 4; Speech Club 4; Library Club 4, Library Assistant 4; Auto Show Princess 3; Press Convention 4; AVILA Staff 4.

NANCY KINGSLEY

Sodality 1, 2, 3; C.S.M.C. 1, 2, 3, 4; Math Club 3;

Speech Club 4; Library Club 4, Library Assistant 4; Catholic Community Library Representative 3.

TONI KLEIN

Class President 4; Sodality 1; Apostleship of Prayer 2, 3, 4; C.S.M.C. 1, 2, 3, 4; Student Council 2, 4, Representative 2; Math Club 3, President 3; Speech Club 4; Library Club 4, Library Assistant 4.

SANDY KLUG

Scholarship 1, 2, 3, 4; Sodality 2, 3, 4; C.S.M.C. 1, 2, 3, 4, President 4, Representative 3; Student Council 4; Glee Club 3, 4; Ensemble 2, 3; Math Club 2, 3; Speech Club 4; DART Staff 4.

DONNA SUE LOCHERT

C.S.M.C. 1, 2, 3, 4; Glee Club 3, 4; Ensemble 2, 3; Classical Club 3; N.C.M.E.A. 3; Pep Club 4.

DONNA LODDE

Apostleship of Prayer 2, 3; C.S.M.C. 1, 2, 3, 4; Glee Club 3, 4; Business Club 4; Math Club 2, 3; DART Staff 4.

JOANNE LYNCH

Sodality 1, 2, 3, 4; S.S.C.A. 4; C.S.M.C. 1, 2, 3, 4; Glee Club 4; Classical Club 3, 4, President 4; Math Club 2, 3; Speech Club 4; Library Club 3; Pep Club 4.

SUE MAGUIRE

Sodality 3, 4; Apostleship of Prayer 2; French Club 4; Business Club 4; DART Staff 4; Press Convention 4; Pep Club 4.

MARGARET MALLORY

Apostleship of Prayer 1, 2, 3, 4, Promoter 4; C.S.M.C. 1, 2, 3, 4; Glee Club 4; Math Club 2, 3, 4; Art Club 4; Library Club 4, Library Assistant 4, Vice-President 4; Press Convention 4; AVILA Staff 4; Pep Club 4.

RITA MARKOVICH

Apostleship of Prayer 3, 4, Promoter 4; C.S.M.C. 1, 2, 3, 4; Speech Club 4; Library Club 3, 4, Library Assistant 4; DART Staff 4.

MARGIE MARTIN

Sodality 2, 3, 4; C.S.M.C. 1, 2, 3, 4; Representative 1; Athletic Club 2, 3, 4; Glee Club 2, 3, 4; Ensemble 2, 3, 4; Classical Club 3, 4; Math Club 3; Speech Club 4, Treasurer 4; Library Assistant 4; Press Convention 4; AVILA Staff 4.

MARCELINE McCONNELL

C.S.M.C. 1, 2, 3, 4; Classical Club 3; Catholic Community Library Representative 3; DART Staff 4.

SHEILA McGRATH

Sodality 1, 2, 3, 4, Secretary 4; C.S.M.C. 1, 2, 3, 4; Student Council 4, Representative 4; Glee Club 4; Classical Club 3, 4, Treasurer 3; Speech Club 4; Library Club 3; AVILA Staff 4.



MARY McMAHON

Scholarship 1, 2, 3, 4; Sodality 1; Apostleship of Prayer 2, 3, 4; C.S.M.C. 1, 2, 3, 4; French Club 4; Classical Club 3; Math Club 2, 3, President 3; Speech Club 4; AVILA Staff 4.

MARTY MEAGHER

Sodality 1, 2, 3, 4; S.S.C.A. 3, 4; C.S.M.C. 1, 2, 3, 4; Athletic Club 1, 2, 3, 4; Glee Club 1, 2, 3, 4; Ensemble 1, 2, 3; Classical Club 3; Math Club 2; Speech Club 4; N.C.M.E.A. 2, 3; DART Staff 4; Pep Club 4.

VIRGINIA MELZAREK

Sodality 2, 3, 4; C.S.M.C. 1, 2, 3, 4; Student Council 2, Representative 2; Glee Club 3, 4; Ensemble 2, 3; French Club 4; Math Club 2, 3; Art Club 4; Prom Attendant 3; AVILA Staff 4.

BARBARA MERLI

Class Secretary 4; Apostleship of Prayer 1, 2, 3, 4, Promoter 4; C.S.M.C. 1, 2, 3, 4; Student Council 1, Representative 1; Athletic Club 3, 4; Glee Club 3, 4; French Club 4, Secretary, Treasurer 4; Business Club 4; AVILA Staff 4.

MARILYN MILLER

Scholarship 1, 2, 3, 4; Sodality 1, 2, 3; Apostleship of Prayer 4, Promoter 4; C.S.M.C. 1, 2, 3, 4; Classical Club 3; Math Club 2, 3, 4, Vice-President 4; Speech Club 4; DART Staff 4; Press Convention 4; Pep Club 4.

MARY RITA MILLER

Sodality 2, 3, 4; C.S.M.C. 1, 2, 3, 4, Representative 3; Glee Club 3, 4; Classical Club 3, 4, Secretary 4; Math Club 3; Speech Club 4.

MARY MARGARET MORAN

Class Vice-President 2; Scholarship 1, 2, 3, 4; Sodality 1, 2, 3, 4; S.S.C.A. 4, Vice-Prefect 4; C.S.M.C. 1, 2, 3, 4; Glee Club 3, 4; Ensemble 1, 2; French Club 4; Classical Club 3, 4; Math Club 2, 3, 4; Library Club 3; DART Staff 4; Pep Club 4.

PEGGY SUE MORGAN

Transferred from Mercy High School, Omaha, Nebraska 3; Class Treasurer 3; Apostleship of Prayer 3; C.S.M.C. 3, 4; Glee Club 3, 4; Business Club 4; Library Assistant 4; DART Staff 4; Press Convention 4; Pep Club 4.

THERESA MORRIS

Sodality 1; Apostleship of Prayer 2, 3, 4, Promoter 4; C.S.M.C. 1, 2, 3, 4; Athletic Club 4; Glee Club 3, 4; Ensemble 2, 3, 4; Speech Club 4; Library Club 3; N.C.M.E.A. 2, 3, 4; AVILA Attendant 1; DART Staff 4; Press Convention 4; STA Quartet 4.

JOANNE MOYER

Apostleship of Prayer 3, 4, President 4, Promoter 4; C.S.M.C. 1, 2, 3, 4; Student Council 4; Pep Club 4.

JULIE MURPHY

Class Secretary 3; Sodality 2, 3, 4; Apostleship of Prayer 1; C.S.M.C. 1, 2, 3, 4, Representative 1; Athletic Club 1, 2, 3, 4; Glee Club 3, 4; Math Club 3; Speech Club 4; Catholic Community Library Representative 2.

KATHY NEWTON

Sodality 2; Apostleship of Prayer 1, 3, 4, Promoter 4; C.S.M.C. 1, 2, 3, 4; Glee Club 4; Ensemble 3; French Club 4; Business Club 4; Library Club 3; DART Staff 4; Press Convention 4.

HELEN NOTHNAGEL

Sodality 2, 3, 4; Apostleship of Prayer 1; C.S.M.C. 1, 2, 3, 4; Athletic Club 1, 2, 3, 4, Glee Club 4; French Club 4; Business Club 4; Library Club 3; DART Staff 4; Press Convention 4.

DIANE O'BRIEN

Sodality 2, 3, 4; Apostleship of Prayer 1; C.S.M.C. 1, 2, 3, 4; Athletic Club 1, 2, 3, 4; Glee Club 3, 4; French Club 4; Speech Club 4, Secretary 4; Library Club 3, 4, Library Assistant 4.

KATHLEEN O'CONNOR

Sodality 1, 2, 3, 4; S.S.C.A. 4; C.S.M.C. 1, 2, 3, 4, Representative 2; Student Council 4, Representative 4; Glee Club 3, 4; Classical Club 3, 4; Math Club 2, 3; Speech Club 4; Library Club 3, Secretary 3; Pep Club 4.

JULIE O'CONNOR

Class President 1; Scholarship 1, 2, 3, 4; Sodality 1, 2, 3, 4, Unit Leader 3; C.S.M.C. 1, 2, 3, 4, Secretary 3; Athletic Club 1, 2, 3, 4, Vice-President 4, Secretary 3, Treasurer 2; Glee Club 3, 4; French Club 4; Classical Club 3, 4; Math Club 2, 3; Speech Club 4; Library Club 3; Student Council 1; De La Salle Cheerleader 3; Pep Club 4; May Court 3.

KATHERINE O'LEARY

Sodality 1; Apostleship of Prayer 3; C.S.M.C. 1, 2, 3, 4; Glee Club 3, 4; French Club 4.

MARCIA O'NEIL

Scholarship 1, 2, 3, 4; Sodality 1, 2, 3, 4; C.S.M.C. 1, 2, 3, 4; Athletic Club 1, 2, 3, 4; Glee Club 3, 4; Ensemble 4; Classical Club 3, 4; Math Club 2, 3, 4; Speech Club 4; Art Club 4, Secretary 4; Library Club 3.

MARITA O'ROURKE

Sodality 1, 2, 3, 4; C.S.M.C. 1, 2, 3, 4; Student Council 3, 4, Representative 3; Glee Club 3, 4; Ensemble 1, 2, 3; Classical Club 3; Math Club 3, 4; Speech Club 4; N.C.M.E.A. 3; Catholic Community Library Representative 3; Press Convention 4; AVILA Staff 4; AVILA Co-Editor 4; Pep Club 4.

JANET ORSCHELN

Sodality 1, 2, 3, 4, Unit Leader 3; S.S.C.A. 3, Prefect 4; Corresponding Secretary 3; C.S.M.C. 1, 2, 3, 4; Student Council 4; Ensemble 1, 2, 3; Classical Club 3, 4, Vice-President 3; Math Club 2, 3, President 2; Speech Club 4; N.C.M.E.A. 2.

ELENA O'SHEA

Sodality 1, 2, 3, 4; C.S.M.C. 1, 2, 3, 4; Glee Club 4; French Club 4, Vice-President 4; Press Convention 4; AVILA Staff 4; Pep Club 4.

KAROL JO PETERSON

Sodality 1; Apostleship of Prayer 2, 3, 4; C.S.M.C. 1, 2, 3, 4; Athletic Club 1, 2, 3, 4; Ensemble 2; French Club 4; Business Club 4, President 4; Press Convention 4; AVILA Staff 4.

MARGARET POLLOCK

Transferred from Harrisonville High School 3; Sodality 3, 4; C.S.M.C. 3, 4; Glee Club 3, 4; Ensemble 4; Speech Club 4, President 4.

KATHY PORN

Apostleship of Prayer 1, 2, 3, 4; Glee Club 3, 4; Ensemble 2, 3; French Club 4; Math Club 3, 4.

KATHY RICHARDS

Apostleship of Prayer 1, 2, 3, 4, Promoter 4; C.S.M.C. 1, 2, 3, 4; French Club 4; Business Club 4, Secretary 4; DART Staff 4; Press Convention 4; Pep Club 4.

CECILIA RUHLMAN

Sodality 1, 2; C.S.M.C. 1, 2, 3, 4; Business Club 4.

ESTHER RYAN

Sodality 2, 3, 4; Apostleship of Prayer 1; C.S.M.C. 1, 2, 3, 4, Representative 4; Math Club 2, 3, 4; Library Club 3; Representative of STA to Missouri Girl's State 3; Representative of STA to Southwest Youth Court 4.

ANITA SCHMIDT

Sodality 1, 2, 3; S.S.C.A. 4; C.S.M.C. 1, 2, 3, 4; Glee Club 3, 4; Ensemble 1, 4; Math Club 2, 3, 4; Speech Club 4, President 4; Art Club 2, 3; DART Staff 4; Pep Club 4.

SALLY SIGOURNEY

Sodality 1; Glee Club 4; Library Assistant 3; DART Staff 4.

JULIE SHEEK

Transferred from Loretto Academy 2; Sodality 2, 3, 4; C.S.M.C. 2, 3, 4; Math Club 3; Speech Club 4; DART Staff 4.

SHARON SMART

Sodality 1, 2, 3, 4; C.S.M.C. 1, 2, 3, 4; Glee Club 4; French Club 4; Speech Club 4; Library Club 3, 4; Library Assistant 4.

CAROL SOBALVARRO

Transferred from English American School, Guatemala City 2; Apostleship of Prayer 3, 4, Treasurer 4, Promoter 4; C.S.M.C. 2, 3, 4; Speech Club 4.

MARGARET SOWERS

Transferred from Ursuline Academy 4; C.S.M.C. 4.

MARY JANE STADLER

Sodality 1, 2; C.S.M.C. 1, 2, 3, 4; Speech Club 4; Library Club 3; Pep Club 4.

SUSAN ST. CLAIR

Sodality 1, 2, 3, 4; C.S.M.C. 1, 2, 3, 4; Glee Club 3, 4; Ensemble 2, 3; Math Club 2, 3; Speech Club 4; N.C.M.E.A. 3; Pep Club 4.

SUE STEPHENSON

Sodality 1, 2, 3, 4; S.S.C.A. 4; C.S.M.C. 1, 2, 3, 4; Student Council 4, Secretary 4; Athletic Club 1, 2, 3, 4; Glee Club 3, 4; French Club 4; Library Assistant 4; Rockhurst Homecoming Attendant 4; Press Convention 4; AVILA Staff 4; Pep Club 4, President 4; May Court 1.

PAT SWEENEY

Transferred from St. Joseph's Academy, St. Paul, Minnesota 1; Sodality 2, 3; Apostleship of Prayer 4, Promoter 4; C.S.M.C. 2, 3, 4; Student Council 2, 3, 4, Vice-President 3; Glee Club 3; French Club 2; Classical Club 4; Math Club 3; Library Assistant 4; DART Staff 4; DART Co-Editor 4; Press Convention 4; Class President 2.

ANNE TRIPLET

Scholarship 1, 2, 3, 4; Sodality 1, 2; C.S.M.C. 1, 2, 3, 4; Glee Club 2, 3, 4; Ensemble 2, 3, 4; Classical Club 3, 4; Math Club 2, 3; Speech Club 4; Art Club 2; Library Club 3; DART Staff 4; Pep Club 4.

NANCY TURNER

Sodality 1, 2, 3, 4; C.S.M.C. 1, 2, 3, 4; Glee Club 3, 4; Math Club 3; Speech Club 4; N.C.M.E.A. 3, 4.

MARY LOU WATERS

Sodality 1, 2, 3, 4; C.S.M.C. 1, 2, 3, 4; Glee Club 3, 4; Ensemble 1, 2, 3; Athletic Club 4; Business Club 4; Math Club 2; Speech Club 4; Art Club 3; N.C.M.E.A. 3; Pep Club 4; De La Salle Cheerleader 3.

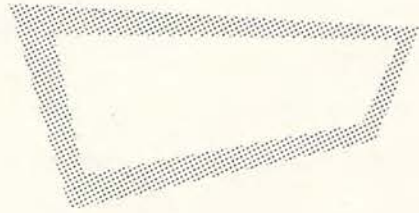
JOANNE WOSTER

Class Secretary 1; Class Treasurer 4; Scholarship 1, 2, 3, 4; Sodality 1, 2, 3, 4, Unit Leader 3; C.S.M.C. 1, 2, 3, 4; Glee Club 1, 2, 3, 4, Secretary-Treasurer 3; Ensemble 1, 2, 3, 4; Classical Club 3; Math Club 2, 3; Speech Club 4; N.C.M.E.A. 1, 2, 3, 4, President 4; Auto Show Princess 2; DART Staff 4; Press Convention 4.

KRESZENZ ZACHER

Sodality 1, 2; C.S.M.C. 1, 2, 3, 4; Speech Club 4; AVILA Queen 4.





Underteilassmen





President . . . . Judy Schloegel  
 Secretary . . . . Julie Trotter

Vice-President . . . . Val King  
 Treasurer . . . . Patty Kealhofer



Judy Abboud



Margo Aberer



Carol Albino



Aileen Altman



Anna Jean Armato

J  
U  
N  
I  
O  
R  
S



LABOR BEACON  
 1825 HARRISON

Kathy Atchity

MAURICE SALONS  
 444 WARD PKWY

Ginny Bertelsen





Ann Bogden



Mary Bond  
Karen Brinkley



Dee Caldarello  
Pat Cantrell  
Patty Clune



Diana Conway  
Pat Doherty  
Sharon Everett  
Betsy Graham



Marilyn Guarino  
Cathy Hughes

Janice Gulotta  
JoAnn Kallenberger

Frances Gutowski  
Betty Kames

Linda Hardwick  
Patty Kealhofer

Vincie Huber  
Carol Kierski

Val King



Barbara Kopp



Sara Lascuola



Martha Leahy



Susan McElhatton



Mary Sue Moran  
Jerolyn Muenks  
Peggy Mulroy  
Denise Oades



Cathy O'Brien  
Mary O'Leary  
Cheryl O'Neil



Linda Plunkett  
Concetta Proffer



Jeanne Quigley



Kathy Ridge





Pat Robinson



Ann Russell



Judy Schloegel  
Suzie Schockey



Valerie Shaw  
Colleen Simms  
Kathy Slickman



Ruth Ann Smith  
Mary Ann Stephens  
Joan Strayer  
Pam Thompson



Julie Trotter  
Jeanette Vail  
Sue Wesley  
Kathy Wilborn

SOUTHSIDE BANK AND DRIVE-IN BANK  
3838 MAIN STREET  
KANSAS CITY, MISSOURI

MILLER-STAUCH CONSTRUCTION  
321 RAILWAY EXCHANGE BUILDING  
VI 2-5701



Betsy Bowes



Karen Caster



Michelle Caster



Marilee Cole



Maureen Darrah



Sue Eagan  
Sally Rahner

Sally Sickman  
Mary E. Keleher



Elaine Devaney  
Suzi Dolson  
Susie Eagan  
Ann Easter  
Mary Martha Faler



Nancy Feters  
Mary Jane Fisher  
Margie Grindinger  
Sandy Hallouer  
Glenda Hobson



Diane Hoffman  
Jody Marie Hogsett  
Mary Holland  
Marcia Hood  
Lynne Horn



Alicia Keegan  
Ginny Kelly  
Mary Elizabeth Keleher  
Collette Kerr  
Mary Jeannine Kerwin



Beverly Kobelt  
 Roberta Lancaster  
 Detta Lee  
 Patti Leftwich  
 Anita Maggio  
 Maureen Malone

Patty Marshall  
 Katy Mayer  
 Cathy McCullough  
 Judy Messina  
 Kathy Metzler  
 Marianne Milani

Susan Murphy  
 Paula Oddo  
 Carol Park  
 Joanne Perry  
 Kay Quick  
 Sally Rahner



Sharon Reardon  
 Sharon Reid  
 Sandy Reiser  
 Pat Riley

Dorothy Sanderson  
 Janet Sheets  
 Janice Sheridan  
 Sallye Sickman

Paulette Sizemore  
 Sally Slezak  
 Lorelee Spruill  
 Madelyn Stallone

Patricia Ann Stewart  
 Kathy Strayer  
 Kathy Tiehen  
 Kathy Tobin

Cathy Toohy  
 Kathy Tutorino  
 Mary Jayneen Van Dyke  
 Terrie Vittorino

Nancy Wells  
 Rosemary White  
 Donna Zahner  
 Diane Zahner



S  
 O  
 P  
 H  
 O  
 M  
 O  
 R  
 E  
 S





President, Katy Sweeney; Vice-President, Nancy Rusicka;  
Secretary, Kitty Neenan.

# C L A S S Of 64



Mary Jo  
Archer



Mandy  
Averill



Pamela  
Ball



Pat  
Bartholome



Mary Pat  
Beck



Connie  
Bink



Pat  
Bohny



Dianne  
Bondon



Marcella  
Brown



Mary Ellen  
Burke



Dianne  
Burns



Mary Kay  
Burnett



Roxanne  
Cannon



Mary Ann  
Carroll



Donna Elizabeth  
Cipolla



Judy  
Closson



Peggy  
Closson



Celeste  
Cody



Louise  
Conley



Luberta  
Connor



Colleen  
Corteville



Kathy  
Craig



Marilyn  
Cruise



Margi  
Dasta



Kathy  
Davis



Denise  
Deardorff



Joe Ann  
DiCapo

NORGE COIN OPERATED DRY CLEANING, FOR INFORMATION CALL COMMERCIAL LAUNDRY AND DRY CLEANING MACHINERY SALES.



Cynthia DiGiovanni



Mary Lee Donohue



Mary Sue Doherty



Mary Bona Doran



Sue Downey



Christine Elliott



Marsha EnFranca



Carol Enna



Terry Fischer



Jenny Fox



Mary Jo Franey



Connie Geschwind



Lucy Gill



Barbara Gilzean



Mary Gramlich



Carol Griffin



Pamela Griffin



Rita Groff



Rosemary Grutsch



Margaret Gubera



Judy Gutowski



Diane Hamam



Susan Hawkins



Karin Hayes



Maureen Hayes



Peggy Healy



Margorie Hess



Bari Hocevar



Catherine Keleher



Susan Kelly



Mary Klein



Marilyn Koehler



Juliana Kohl



Deidra Lillis



Cheryl Lispi



Martha Lynch



Nancy Lysaught



Kathy Madden



Joan Markovich



Patricia Mailliard



Peggy Matthews



Kenene McCracken



Jane McFadden



Marilyn McGuyre



Mary Minnies



Kathy Mitchell



Nancy Mitchell



Annette Moran



Karen Morgan

SAINT ANN'S CHURCH  
7231 MISSION ROAD  
PRAIRIE VILLAGE KANSAS

CLINE CONSTRUCTION EQUIPMENT, INC.  
3501 GARDNER AVE. HU 31225





Kathy Mount



Barbara Murphy



Judith Murray



Kitty Neenan



Janet Nelson



Valerie Norman



Mary O'Connell



Mary O'Keefe



Carolyn Orscheln



Nancy Osburn



Sharon Payne



Maurita Perll



Patricia Peruse



Diane Piane



Sharon Podraza



Kathy Powers



Jacquelyn Raupp



Carol Redding



Ann Regan



Sharon Reiser



Denise Robinson



Nancy Ruzika



Margie Scheier



Mary Schmidt



Janet Schurig



Theresa Schweiger



Kianne Sere



Patricia Sherman



Billie Stablein



Barbara Stein



Kathleen Sweeney



Barbara Tiehen



Maureen Tierney



Valerie Tonnies



Kathleen Triplett



Cathy Vail



Joan Van Oosterdiep



Kendra Vaughan



Patricia Vargon



Melanie Veenboer



Susan Walsh



Loraine Wangberg



Patricia Welch



Anne Whalen



Linda Whitaker



Mary Whitaker



Cheryl Wilborn



Mary Kay Wilson



Pamela Winkler





*Curricular*



## *SOCIAL STUDIES*

Enthusiastic Junior debaters consider their candidates' platform while other Juniors review their American Heritage. The freshmen study Japanese Culture.





"Over and above that" the seniors anticipate Father Nadeau's class each day.



Father Berendzen smiles patiently at the "small but mighty Juniors."

## *RELIGION*

ANHEUSER-BUSCH INC.  
100 EAST 20TH STREET  
KANSAS CITY, MISSOURI

HORN ADVERTISING COMPANY  
215 S. MAIN STREET  
LEE'S SUMMIT, MISSOURI



This advanced math class of seniors is really puzzled.



## MATH



The juniors look at St. Elizabeth as though they really understood.



Freshmen enjoy these serious problems.

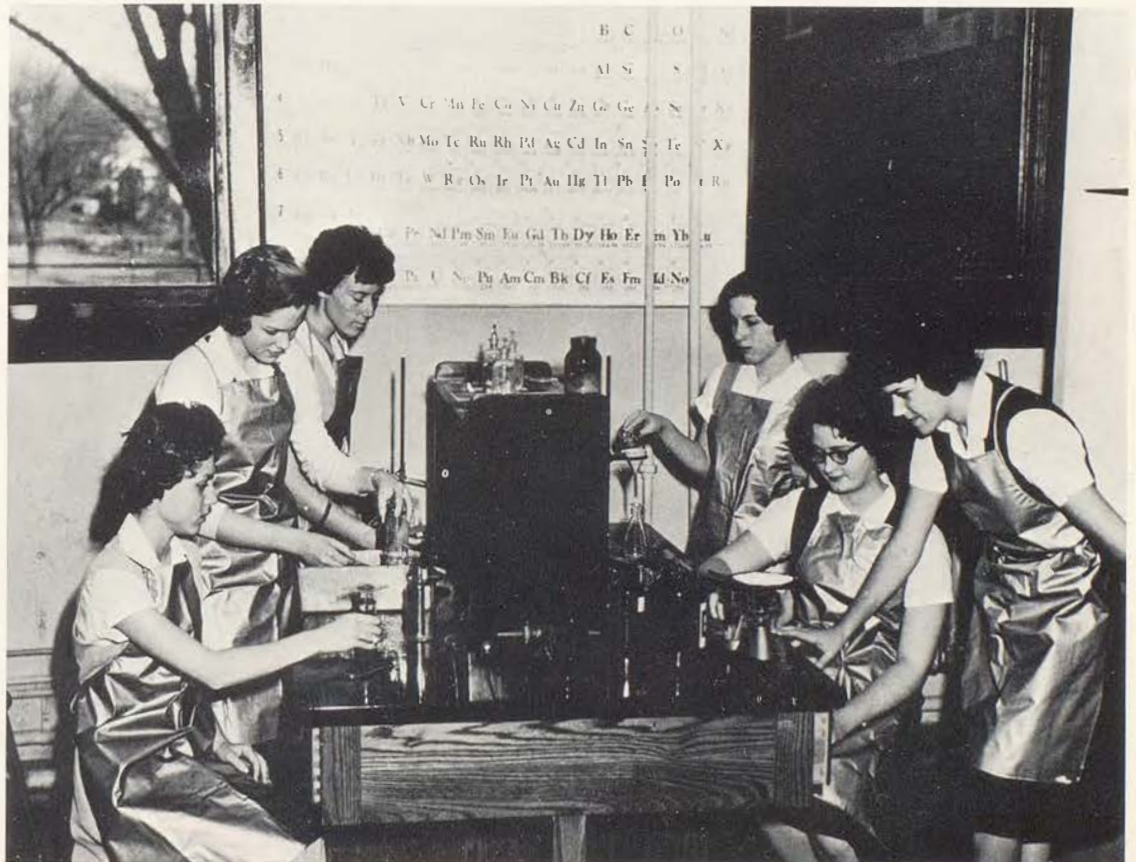


M. Devaney  
 C. Kerr  
 J. Kerwin  
 K. Metzler  
 S. Slezak  
 K. Quick  
 M. Keleher

Do a little  
 research in  
 biology.

## SCIENCE

Seniors study oxygen as preparation for space travel.







The Freshman Latin students have a new slogan this year. "Veni! Vidi! Vinci!."



Senior French students learn of the interesting places and different customs of France.



Freshman English students are building their foundation for future years.

LYON DRUG COMPANY, INC.  
11305 HIGHWAY 71  
FEATURING DRIVE-IN PRESCRIPTION SHOP

HOTEL PHILLIPS  
12TH AT BALTIMORE  
KANSAS CITY, MISSOURI





The American Legion sponsored an oratorical contest in which a senior, Janet Allen, took first place.



Mrs. Sullivan's freshman speech class presented a play for Sister Anna Joseph.



The seniors are so ambitious in Mrs. Sullivan's speech class.



These first year typists get the fundamentals for future office work.



The business club officers put into practice the things a good secretary should know.



This sewing class looks very proficient, but what's the matter with Judy?



Under the expert guidance of Sister Joan Louise the art students learn the relations of line to color.



The Christmas spirit is expressed by the De La Salle band and St. Teresa's Chorus.

The Cantate was closed with this impressive tableau.



Suzanne Flanner, Teresa Morris, Joanne Woster, and Barbara Antonello make up the S. T. A. Quartet.

COMPLIMENTS OF  
A FRIEND

JOHN P. MULLANE  
INSURANCE AGENCY  
1012 BALTIMORE  
K. C., MO.





Letterwomen of STA---Our Athletic Club



Energetic sophomores show their ability



Go-o-o, seniors beat freshmen

The shot in ROCKHURST's Arm

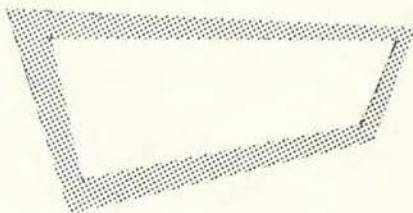


DUSSELIER BROS. READY MIX CONCRETE CO.

519 BLUE RIDGE EXTENSION  
GRANDVIEW, MISSOURI

KOPPERS ASPHALT PAVEMENT SEALER

3527 BROADWAY  
K. C., MO.



Activities





## *ACADEMY GIRL*

Marie Gainey was chosen Academy girl by the faculty for her outstanding leadership, poise, scholarship and loyalty to Saint Teresa's.

HARDWICK EQUIPMENT CO.  
11128 SOUTH 71 HIGHWAY



After many years the National Honor Society is back at S. T. A.

Margaret Sowers, National Merit Scholarship Finalist, looks on as the others read their letter of honorable mention.



Sheila McGrath and Margie Martin hold the coveted Latin trophy.

**BRACE OLDSMOBILE**  
27TH AND MAIN

**KANSAS CITY INSULATION CO.**  
4900 BLUE PARKWAY  
UN 1-0142





The Sodality girls enjoyed a day of recollection at the Benedictine Convent.



Father Schmidt S. J.



Father Stobie S. J.



The mission club officers held an all-school meeting in the auditorium.



The mission representatives promoted a book drive throughout the school.



On Tuesday afternoons these industrious plan the coming Apostleship of Prayer meeting.

**LINDE COMPANY**  
910 BALTIMORE  
KANSAS CITY, MISSOURI

**CLARKSON CONSTRUCTION CO.**  
4133 GARDNER  
KANSAS CITY, MO.



Father Eilts spoke to the Juniors and Seniors.



The girls kept the retreat silence even in the cafeteria.



Father Eilts gives Papal blessing which closed our retreat.



The girls had the opportunity to meditate and go to confession.



These crowded Freshmen and Sophomores show a need for a new chapel.



S  
T  
U  
D  
E  
N  
T  
C  
O  
U  
N  
C  
I  
L

Law Enforcers



Student Council presents flags to the school.

Power behind the throne.



Student Council members with officers Marie Gainey, President; Joan Strayer, Vice-President; Sue Stephenson, Secretary; and Patty Clune, Treasurer.



INTERSTATE SECURITIES CO.  
3430 BROADWAY  
KANSAS CITY, MO.



Sue Wesley



Sandra Klug



Mary Magaret Moran



Joanne Woster



Pat Riley



Martha Leahy



Mary Keleher



Jeannette Vail



Kathy Tutorino



Aileen Altman



Marcia Hood

Hail! Queen of the May!  
Janet Orschlen has patterned the life of Mary as Prefect of our Sodality.



Diane Conway



Sharon Smart



Barbara Antonella



Kathy Tiehen

ST. TERESA'S ACADEMY  
OUTSTANDING GIRLS' SCHOOL OF KANSAS CITY

5600 MAIN



# AVILA



Michele Bailey



Jody Clune



Suzanne Flanner



Michele Hughes



Linda Day  
co-editor



Darleen Kerwin



Margaret Mallory



Margie Martin

# STAFF



Shelia McGrath



Mary McMahan



Virginia Melzarek



Barbara Merli



Marita O'Rourke  
co-editor



Elena O'Shea



Karol Peterson



Sue Stephenson



# The Dart Staff



Kathy Fisher  
co-editor



Suzanne Kelly



Nan Best



Donna Lodde



Teresa Haake



Marceline McConnell



Anita Schmidt



Susan McGuire



Helen Nothnagel



Katherine Newton



Ann Butler



Karen Conroe



Sharon Calloway



Julie Sheek



Rita Markovich



Sandra Klug



Jill Churchman



Therese Morris



Joanne Woster



Susan Flatley



Mary M. Moran



Anne Triplett



Judy Higgins



Kathleen Richards



Ann Hager



Sally Sigourney



Marty Meagher



Peggy Morgan



Margaret Sowers



Barbara Antonello



Janet Allen



Marilyn Miller



Patricia Sweeney  
co-editor

# THE DART

Kansas City, Missouri

December 16, 1960



## THE DART

Published by the students  
of Saint Teresa's Academy  
5700 Main Street  
Subscriptions . . . \$1.00



Co-Editors ..... Kathy Fisher and Patricia Sweeney  
 News Editor ..... Suzanne Kelly and Nan Best  
 Features ..... Donna Lodde, Teresa Haake, and Marceline McConnell  
 Staff Artist ..... Anita Schmidt  
 Columnists ..... Susan McGuire, Helen Nothnagel, and Katherine Newton  
 Business Managers ..... Ann Butler, Karen Conroe  
 Make-up ..... Sharon Calloway and Julie Sheek  
 Exchange Editors ..... Rita Markovich and Sandra Klug  
 Staff Typists ..... Jill Churchman and Theresa Morris  
 Reporters ..... Joanne Woster, Susan Flatley, Mary M. Moran, Anne Triplett, Judy Higgins, Kathleen Richards, Ann Hager, Sally Sigourney  
 Marty Meagher, Peggy Morgan, Margaret Sowers  
 Photographer ..... Janet Nelson  
 Advisor ..... Sister Mary Romana, C.S.J.





# *PROM ATTENDANTS*

Martha Leahy and Kathy Atchity were the choice of the Senior class to be the attendants At the Prom.



# PROM QUEEN

Joanne Moyer is our 1961 Prom Queen. She was chosen by the Junior Class because of her natural friendliness and winning personality.





The first big dance of the year was sponsored by the Athletic Club.

Kreszenz Zacher, Senior candidate, was crowned AVILA Queen. Her attendants were Kathy Atchity, Pam Griffin, and Roberta Lancaster.



The Juniors were guests of the Seniors to dance to the theme of "Wonderland By Night."



Rockhurst and DeLaSalle were invited to a Junior-Senior Mixer.



# DANCES



## *MY HEART BELONGS TO DADDY*

Judy Schloegal, junior, "actively" participates in one of the games.



STA 'ers all agreed that their escorts were the best yet.





Sharon Calloway, Senior, honored S. T. A. as first attendant for the De La Salle Homecoming.

# HOMECOMING



Valerie Shaw, Junior, reigned as second attendant at the Rockhurst Homecoming.

Sue Stephenson, Senior, reigned as first attendant at the Rockhurst Homecoming.





# SENIOR DIRECTORY

NAME	ADDRESS	PHONE	NOTED FOR
Janet Allen	6330 Oak	HI 4-9220	Willingness
Barbara Antonello	1045 W. 56 th St.	HI 4-7248	Athletic Ability
Michele Bailey	3211 W. 94 th St.	MI 9-1840	Bow-legs
Margie Bauers	827 E. 83 rd St.	JA 3-3323	Shyness
Nan Best	6429 Jefferson	DE 3-7985	165 lbs. of COFFEY
Ann Butler	3830 Forrest	WE 1-7967	Quietness
Sharon Calloway	7420 Harrison	DE 3-6264	Voice Box
Jill Churchman	7641 Aberdeen	MI 9-8529	Tiny Tim
Jody Clune	3332 Summit	JE 1-4350	Vivaciousness
Karen Conroe	6715 Cherry	JA 3-1664	Conservativeness
Linda Kay Day	2802 W. 67 th Terr.	EN 2-8523	Sweetness
Catherine Emert	3801 Bannister Rd.	SO 1-7187	Niceness
Kathleen Fisher	3 W. 70 th	DE 3-1356	Stair Walking
Suzanne Flanner	3600 Jefferson	JE 1-0721	Height
Susan Flatley	827 Huntington Rd.	EM 3-1753	Flammableness
Sandra Flynn	9808 Pembroke Lane	NI 2-6034	Eyes
Kathy Fogarty	9713 Mohawk Lane	NI 8-4743	Angelicness
Marie Gainey	6438 Indian Lane	EN 2-8588	Krout Wagon
Phyllis Gravino	7216 Montgall	JA 3-0474	Daintiness
Margay Green	640 E. 66 Street	HI 4-7279	Trick or Treat
Teresa Haake	607 E. 65 Street	HI 4-9631	Keeragiousness
Ann Hager	844 W. 71 Terr.	HI 4-3568	Baseball
Marilyn Harris	5415 Central	DE 3-2300	Baldness
Judy Higgins	35 W. 53 Street	HI 4-6405	Tempramant
Patti Hooper	622 E. 65 Street	HI 4-9631	DELMAR 3
Michele Hughes	410 Huntington Rd.	JA 3-6859	Helpfulness
Suzanne Kelly	5714 Main	JA 3-4162	TERRYcloth
Darleen Kerwin	4500 W. 74 Terr.	EN 2-2515	Leadership
Nancy Kingsley	9110 Central	EM 1-5944	Hopechest
Toni Klein	232 W. 52 Street	JE 1-7289	Cold White Wall
Sandra Klug	137 W. 85 Street	HI 4-2094	"Dimes Please"
Donna Lochert	11205 Eastern	SO 1-8581	Pleasantness
Donna Lodde	709 E. 63 Terr.	JA 3-0546	Rosy Cheeks
Joanne Lynch	4402 E. 111 Terr.	SO 1-1109	Big Mouth
Sue Maguire	24 E. 54 Street	HI 4-0996	Dumbness
Margaret Mallory	712 E. 72 Terr.	DE 3-6697	Carrot Top
Rita Markovich	5134 Dodson	CO 2-9468	Nuttiness
Margie Martin	9239 Lee Blvd	MI 9-0142	Photography
Marceline McConnell	4714 Vista	CO 2-8914	Hair
Sheila McGrath	30 W. Concord	DE 3-0136	Smantha
Mary McMahan	7320 Lydia	DE 3-9826	TOMboy



Janet  
Allen



Barbara  
Antonello



Michele  
Bailey



Marjorie  
Bauer



Nan  
Best



Ann  
Butler



Sharon  
Calloway



Jill  
Churchman



Jody Clune

Karen Conroe

Linda Day

Cathy Emert

Kathy Fisher

Teresa Haake



Suzanne Flanner



Ann Hager

Darleen Kerwin

Nancy Kingsley

Susan Flatley



Marilyn Harris

Toni Klein

Sandra Klug

Sandy Flynn



Judy Higgins

Donna Lodde

Kathy Fogarty

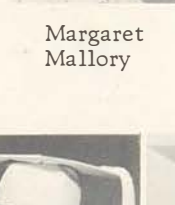


Patti Hooper

Donna Lochert

Joanne Lynch

Marie Gainey



Suzanne Kelly

Sue Maguire

Margaret Mallory

Phyllis Gravino



Rita Markovich

Margie Martin

Marceline McConnell

Sheila McGrath

Mary McMahon





Marty Meagher



Virginia Melzarek



Barbara Merli



Marilyn Miller



Mary Rita Miller



Diane O'Brien



Elena O'Shea



Mary Margaret Moran



Julie O'Connor



Karol Peterson



Margaret Pollock

Peggy Sue Morgan



Kathy O'Connor



Kathy Porn



Theresa Morris



Katherine O'Leary



Joanne Moyer



Marcia O'Neil



Kathy Richards

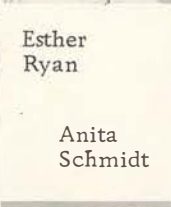
Julie Murphy



Marita O'Rourke



Cecelia Ruhlman



Esther Ryan

Kathy Newton



Janet Orschlen



Anita Schmidt



Helen Nothnagel



PYRAMID PRODUCTS  
1916 MCGEE



Julie Sheek



Salley Sigourney



Sharon Smart



Carol Sobalvarro



Margaret Sowers

KROH BROS.  
REALITY CO  
8000 LEE  
BOULEVARD

<u>NAME</u>	<u>ADDRESS</u>	<u>PHONE</u>	<u>NOTED FOR</u>
Marty Meagher	5401 Rockhill	JA 3-2667	Dancing
Virginia Melzarek	1900 W. 69 Street	EN 2-7095	Bill-boards
Barbara Merli	7743 McGee	HI 4-9897	Feminity
Marilyn Miller	612 Applewood	LA 4-3464	4-H
Mary Rita Miller	7930 Cambridge	AN 9-4394	Winter Sports
Sharon Minnick	5539 Oak	HI 4-8077	New York
Mary Margaret Moran	7401 Wyoming	DE 3-8495	Kendling
Peggy Sue Morgan	5432 Baltimore	JA 3-3132	Talkativeness
Theresa Morris	6916 Chestnut	DE 3-5158	Petite
Joanne Moyer	9606 Lee Blvd.	NI 2-5079	White Bonnevilles
Julie Murphy	5014 Walnut	VA 1-1082	Ulcer
Kathy Newton	640 E. 71 Terr.	JA 3-3770	Make-Up
Helen Nothnagel	6041 Locust	JA 3-2158	Slumber Parties
Diane O'Brien	5401 Wyandotte	DE 3-2173	Pony Tail
Julie O'Connor	6111 Walnut	JA 3-1497	Friendliness
Kathleen O'Connor	209 Navajo Lane	JA 3-6630	Dieting
Katherine O'Leary	826 W. Waldo	CL 2-9698	Greatness
Marcia O'Neil	7106 E. 86 Street	FL 3-8528	Basketball
Marita O'Rourke	5431 Wyandotte	DE 3-4835	California Bound
Janet Orscheln	8400 Jarboe	DE 3-3637	"Oh Dear"
Elena O'Shea	8639 Maiden Lane	JA 3-5498	Drama
Karol Peterson	5324 Harrison	DE 3-3912	Pretty Feet
Margaret Pollock	805 E. Pearl	TU 4-4102	Tardiness
Kathleen Porn	9315 Belinder Rd.	NI 2-3058	Math Ability
Kathy Richards	5921 Womall	JA 3-4333	Shortning Bread
Cecilia Ruhlman	7219 Main	JA 3-1663	Typing
Esther Ryan	7636 Lydia	HI 4-9335	75 Mile Trips
Anita Schmidt	218 W. 73 Terr.	DE 3-4391	Art
Julie Sheek	1409 E. 66 Street	EM 1-0603	Hands
Sally Sigourney	8825 Custer Trail	HI 4-7424	Shyness
Sharon Smart	5847 Penn	DE 3-0347	Smiles
Carol Sobalvarro	1216 Independence	BA 1-3523	English
Margaret Sowers	4635 Madison	PL 3-3050	Brains
Mary Jane Stadler	4110 E. 107 Street	SO 1-7211	Agility
Susan St. Clair	6440 Charlotte	HI 4-9139	Grasshopper
Sue Stevenson	6400 Morningside	JA 3-3632	<u>ROCKHURST</u>
Patricia Sweeney	7344 Canterbury	EN 2-9225	JOE College
Anne Triplett	500 W. 74 Street	JA 3-1722	Metrecal
Nancy Turner	5741 Cherry	JA 3-9132	Wabble
Woster, Joanne	6306 W. 57 Terr.	CO 2-8401	DO-RE-MI
Mary Lou Waters	6429 Walnut	HI 4-5626	Cheerleading
Kreszenz Zacher	4633 Terrace	VA 1-6782	First Name



Jane  
Stadler



Susan  
St. Clair



Sue  
Stephenson



Pat  
Sweeney



Anne  
Triplett



Nancy  
Turner



Mary Lou  
Waters



Joanne  
Woster



Kreszenz  
Zacher



# PERSONAL PATRONS

Reverend Baughman  
Reverend James Bechter  
Reverend Harry Berendzen  
Rt. Reverend Msgr. L. P. Creviston  
Reverend J. DeMaria  
Reverend D. Sturm

Reverend V. L. Kearney  
Reverend Thomas Leavey  
Reverend Richard D. Lord  
Reverend Joseph Nadeau, O. P.  
Reverend John R. Quinn  
Reverend Norman Rotert

Abboud, Mary Kay  
Aberer, Margo  
Abe's Hobby Lobby  
Adam, Dr. and Mrs. B.  
Alexander's Record Shop  
Anastas, Paul  
Anderson, Mrs. Phillip L.  
Andrisevic, Ed  
Anderson, Mrs. Russel  
Anthes, Bernard  
Apostleship of Prayer  
Archer, Mr. and Mrs. P.  
Armato, Mr. and Mrs. Sam  
Atchity, Miss Jackie  
Bailey, Mr. and Mrs. T. E.  
Ball, Mr. and Mrs. S. W.  
Barber, Mr. and Mrs.  
Bardman, Mr. I.  
Bartholome, Mr. and Mrs.  
Bauer, Mr. and Mrs. A. F.  
Baumgartner, Mr. and Mrs. A.  
Beck, Mr. and Mrs. T. J.  
Bell, Miss Mary Ann  
Bennett, Mr. and Mrs.  
Bennett, Sara Lee  
Benson, Charles C.  
Beringer, E.  
Berkey, Mr. and Mrs. E. R.  
Bergman, Mike  
Bertleson, Mr. and Mrs.  
Bette Bonn School of Modeling  
Bill and Mary Betty  
Bill's Service  
Bink, Mr. and Mrs. Anthony  
Bob and Dennie  
Bolewski, Mr. and Mrs. Ted  
Bond, Mrs. H. R.  
Bobdon, Miss Anita  
Borserine, Josephine  
Boutross, Pete  
Bower, Mary  
Children, Brehmer  
Breting, Mr. and Mrs. George L.

Brehmer, Joseph  
Brinkley, Mr. and Mrs. Frank  
Broadmour Super Market  
Broadway Shoe Service  
Brown, Mr. and Mrs. Frank  
Brown, Mr. and Mrs.  
Bruni, Mr. and Mrs. E. J.  
Bukaty, Mr. and Mrs. Marion C.  
Bruni, Mr. and Mrs. E. J.  
Bruni, Santa Mary  
Burnett, Carol  
Burns, Mr. and Mrs. D. M.  
Caldarello, Mr. and Mrs. M. A.  
Caldwell, Don  
Campbell, Mr. and Mrs. James  
Campbell, Mr. and Mrs. S. A.  
Cannon, Mr. and Mrs. T. C.  
Cantrell, Mr. and Mrs. C. W.  
Theater, Capri  
Carney, Margaret  
Cash, Mr. and Mrs. Justin  
Carter, Mr. and Mrs. F. F.  
Caster, Karen  
Cates, Mrs. Lela  
Caviar, Mr. Lee  
Center, Miss Pat  
Christenson, Sue  
Wagon, Chuck  
Churchman, Mr. and Mrs. J. R.  
Clark, Bob  
Cleary, Mr. and Mrs. John  
Clune, Mr. and Mrs. R. E.  
Coleman, Harry C.  
Colgan, Mr. and Mrs. Lowell  
Community Motor Inn  
Camp of Village Radio and Television  
Conklin, Margaret Mary  
Connor, Bob  
Connor, Mrs. E.  
Connor, Mr. and Mrs. Stephen  
Conroy, Gerald I.  
Conway, Mr. Thomas J.  
Corteville, Frank

Cosentino's Market  
 Coverly, Nellie  
 Crestwood Card and Gift Shop, The  
 Cruise, Mr. and Mrs. K. A.  
 Cummins, Mrs. Norine  
 Curry, Mrs. H. E.  
 Curtman, Dale  
 Cycle, Blue Hills  
 Daniels, Mr. and Mrs. J. F., JR.  
 D'Anna, Mr. and Mrs. F.  
 Davies, Mr. and Mrs. D. P.  
 Darrah, Mr. and Mrs. M. M.  
 Davis, Dr. and Mrs. J. C.  
 Day, Miss Linda Kay  
 Day, Mr. and Mrs. J. F.  
 DeCoursey, Tom  
 DeLuca Shoe Repair  
 DiCapp, Mr. and Mrs. C.  
 Doty, Johnny  
 Dolan, James  
 Domino, Miss M.  
 Donovan, Judy  
 Downey, Hugh  
 Doyle, Mr. and Mrs. J. F.  
 Drape, Mr. and Mrs.  
 Dunphy, Mr. and Mrs.  
 Dunphy, Steve  
 Duke's DX Service  
 Duke's Fairway Station  
 Easter, Mr. and Mrs. A. T.  
 Eisert, Julia  
 Ellis, Sue  
 Enna Dr. and Mrs. C. D.  
 Etem, Mr. C.  
 Fagen, Mr. and Mrs. W. D.  
 Falstrom, Kathy  
 Fagan, Bill  
 Fisher, Mr. and Mrs. H. B.  
 Faler, Mr. and Mrs. Neal  
 Fallon, Mr. and Mrs.  
 Fetters, Nancy  
 Fisher, Tom  
 Fitzgerald, Mr. and Mrs. J. R.  
 Flanigan, J. J.  
 Flanner, Suzanne  
 Major's Florist  
 Flynn, Mr. and Mrs. T.  
 Fogarty, Kathy  
 Fogarty, Mr. and Mrs. John  
 Fogarty, Mrs. J. Sr.  
 Ford, Fred  
 Forney, Dr. M. F.  
 Fox, Maj. H. Sr.  
 Van Dyke Furs  
 Francksen  
 Fundis, Mr. and Mrs. George

A Friend  
 Gainey, Frances  
 Galiano, Mr. and Mrs. F. R.  
 Gargotta, Mrs. R.  
 Gates, Mr. D. R.  
 Gatto, Frank  
 Geller Furniture Company  
 George and Joan  
 A Friend  
 Cheryl Gepford  
 Geschwind, Mr. and Mrs. R. B.  
 John D. Gill  
 Graham, Mr. and Mrs. L. A.  
 Gray, John D.  
 Gray, Helen Jane  
 Gross, Mr. and Mrs. R. A.  
 Grutsch, Mr. and Mrs. R. L.  
 Guarino, Mr. and Mrs. Frank  
 Guastello, Carmella J.  
 Gugera, Margie, O'Gara  
 Gubera, Mrs. Anna  
 Habel, Mr. Joseph J.  
 Hall, Charles F.  
 Hallauer, Mr. and Mrs.  
 Hardware, Mission  
 Hardwick, Mr. and Mrs. Lee  
 Hardy, Clint S. Jr.  
 Haman, Mr. and Mrs.  
 Harr, Mr. and Mrs. Thomas J.  
 Harrington, Mr. and Mrs.  
 Harris, Frances A.  
 Hayes, Mr. and Mrs. T. J.  
 Hense, Dr. and Mrs. John  
 Hess, Marjorie  
 Hell, Bernadine  
 Hendon, Mary Helen  
 Hensler, Mr. and Mrs. Max  
 Hess, Mr. and Mrs. V. S.  
 Holiday Service No. 1  
 Higgins, Mr. and Mrs. R. J.  
 Higgins, Mrs. W. R.  
 Hoffman, Mrs. Kathryn Quirk  
 Hodes, Martha  
 Hodes, Mrs. Richard  
 Hogan, Virginia  
 Holland, Mr. and Mrs. E. J.  
 Hood, Mr. and Mrs. J. R.  
 Hood, Joyce "58"  
 HornBastel, Mr. and Mrs. H. F.  
 Horn, Mr. and Mrs. H. F.  
 Howard, Mrs. Margaret, R. N.  
 Hobson Engineering  
 Horn, Mr. and Mrs. Charles A.  
 Hobson, Mr. and Mrs. K. N.  
 Hode, Mrs. Mary



Hoyt, Norman, Photography  
 Huff, Fred W.  
 Fox, Henry H.  
 Hughes, Mr. Paul J.  
 Hughes, Mr. and Mrs. Frank A.  
 Hughes, Mr. and Mrs.  
 Irene's Big Record  
 Jackson, Miss Nancy Jo  
 Jakobe, George A.  
 Jacques, Sheldon  
 Jeanne and Frank  
 Jerome, Jo Ellen  
 A Friend  
 JoAnn and Her Conscience  
 A Friend  
 Kavanaugh, Charles H.  
 A Friend  
 Keegan, Mr. and Mrs. F. R.  
 Kelly, Mrs. Neil Wallace  
 Kelly, Mr. Phil J.  
 Kelly Jr., Mr. W. D.  
 Kelsey, Oris E.  
 Kennedy, Mr. Earl  
 Kerr, Mr. and Mrs. John  
 Kerwin, Mr. and Mrs. Vincent S.  
 Kierski, Miss Carol A.  
 Kilty, Anna  
 King, Miss Bonnie  
 King, Mr. and Mrs. Harlow B.  
 King, Mr. Carl  
 Klein, Mr. Paul M.  
 Kobelt, Beverly  
 Kopp, Miss Genevieve  
 Kowalczyk, Josephine  
 Kramer's Department Store  
 Krug, Mr. and Mrs. Sandford H.  
 Lamb, John  
 Lancaster, Kenneth S.  
 Langle, Mr. and Mrs. John M.  
 Lawler, Mrs. Michael  
 Layne, Shirley Jeanne  
 Layne Family, The  
 A Friend  
 Lee, Mr. and Mrs. J. J.  
 Leftwich, T. F.  
 Leitner, Father John E.  
 Leonard, Rich  
 Lillis, Clark  
 Lillis, Mr. and Mrs.  
 Livers Bronze Company  
 Lockers, Fairway Food  
 Lococo, Mr. and Mrs. T.  
 Lodde, Fred C.  
 A Friend

Lowe, Mr. and Mrs. S. E.  
 Lynch, Martha  
 Lysaught, Donald J.  
 Madden, Mr. and Mrs. S. C.  
 Maddi, Rae  
 Maggio, Anita  
 Magness, Donald R.  
 McGrath, Carmela  
 Mahony, Miss Patsy  
 Mailliard, Patricia  
 Malaponte, Mike  
 Mallory, Mary  
 Mallory, Mr. and Mrs. C. N.  
 Malone, Mr. and Mrs.  
 Mann, Buel  
 Manzello, Mrs. Michael  
 Martin, Mr. Dan  
 Martin, Margie  
 Martin, Harold & Sons  
 Martin, Mr. W. C.  
 Mary Ann and Brien  
 Mary and Don  
 Mayer, Mr. and Mrs. Vincent  
 Mayer, Mr. and Mrs. Cletus  
 McCracken, Roy  
 McCormick, Mrs. Paul  
 McCullough, Mr. and Mrs. H. F.  
 McDonald, Mrs. Minnie  
 McFadden, Jane F.  
 McGinley, Mr. and Mrs. F. J.  
 McGinley, Isabel  
 McGrath, Mr. and Mrs. Allen  
 McGrath, Michele "58"  
 McGraw, Mr. and Mrs. W. J.  
 McGuire, Father A. F.  
 McGuire, Mrs. Kathleen  
 McGuyre, Mr. Frank  
 McInerney Martin, Family  
 McInteer, Don "Ox"  
 McKinley, Mr. and Mrs. Virgil  
 McKoen, William  
 McMichael, Mary Lou  
 McMichael Family, The  
 McNellis, Mr. and Mrs. Maurice  
 McQueeny, Mr. and Mrs. J. Ward  
 McRae, Mr. and Mrs. I. M.  
 Meagher, Mr. and Mrs. Herbert  
 Meiners, Mr. and Mrs. Ralph  
 Meiners, Mr. and Mrs. Walter  
 Melzarek, Miss Barbara  
 Merli Family, The  
 Messina, Joseph--Buildorma  
 Milani, Mr. and Mrs. E. J.  
 Miller Jr., Mr. and Mrs. John S.

Mitchell, Carol  
 Mitchell, Mr. and Mrs. Eugene P.  
 Mitchell Family  
 Mitchell, Mr. and Mrs. John  
 Mitchell, Kathy  
 Mitchell, Margaret  
 Molinaro, Dr. J. M.  
 Molle, Miss Angeline  
 Moran, John A.  
 Moran, Mr. and Mrs. Robert L.  
 Morris, Theresa  
 Mount, Dr. and Mrs. C. W.  
 Muehlebach, Mrs. George E.  
 Murphy, J. C.  
 Murphy, Susan  
 Murphy, Mr. and Mrs. T. P.  
 Murphy, Mr. and Mrs. John W.  
 Murphy, Mr. and Mrs. Wm.  
 Murphy, Mr. and Mrs. J. T.  
 A Friend  
 Nelson, Patricia  
 Nelson, Mary Joan  
 Nestor, Mr. and Mrs. John T.  
 Nestel, Mr. and Mrs. E.  
 Newton, Nancy and Children  
 Ninci, Mr. and Mrs. and Family  
 Northrup, Mrs. Jane  
 Nothnagel, Mr. and Mrs. Carl  
 A Friend  
 Quirk, Mrs. Nellie  
 Quirk, Wm.  
 Oades, Mr. and Mrs. Walter H.  
 O'Brien, Sara  
 O'Connell, Bill  
 O'Connor, Mrs. John  
 Oddo, Mrs. Frank  
 O'Gara, Frank  
 O'Laughlin, Mr. and Mrs.  
 O'Leary Family, Timothy  
 Oliver, Dr. and Mrs.  
 O'Neil, Mrs. P.  
 O'Neil, Jim  
 O'Neil, Timothy P.  
 Ong, Mr. and Mrs. Richard  
 Oxford, Joseph P.  
 Oro, Mr. and Mrs. J.  
 Orscheln, Mrs. A. G.  
 Orscheln, Annette  
 Orscheln, Toni  
 Osburn, Mr. and Mrs. C. C.  
 Osburn, Nancy  
 Osburn, Mrs.  
 Park, Mrs. Eugene  
 Pedicidi, Mrs. Rocco  
 Pendergast, Mr. and Mrs. Robert P.

Perkins, Mike  
 Perll, Dr. and Mrs. Maurice F.  
 Perry, Mr. and Mrs. R. E.  
 Perusse, Gerard  
 Philips, Mr. and Mrs.  
 Pishke, Togo and Taffy  
 Pivonka, James  
 Plagens, Henry J.  
 Podraza, John R.  
 Pollock, Mrs. J. M.  
 Proffer, Mr. and Mrs. R. E.  
 Polen, Mr. and Mrs. Robert  
 Pollock, Margaret  
 Porn, Mrs. J. B.  
 Porn, Sue  
 Reagan Exterminator  
 Ralph and Pat  
 Raupp, F. Neal  
 Reardon, Terry  
 Reardon, Pauline  
 Regan, Mary Margaret  
 Reid, Mrs. Etta  
 Reid, Mr. and Mrs. Charles  
 Reid, Mr. and Mrs. Ralph  
 Rhinehart, Sharon  
 Reidy, M. K.  
 Reinjes, Terri Ann  
 Reiser, Mr. and Mrs. George  
 Rice, Margaret  
 Ridge, Kathy  
 Ridgeview Country Club  
 Ridgeway, Mrs. Robert  
 Riley, Patricia  
 A Friend  
 Roberta and Ginny  
 A Friend  
 Robinson, Mr.  
 Roche Dry Goods  
 A Friend  
 Rose, Lee  
 Rowland, Mr. and Mrs. Pat  
 Rush, Barbara  
 A Friend  
 Ryan, Esther  
 Sager, Fred E.  
 Sater, Mr. and Mrs. David E.  
 Scoobies, The  
 Scout Personell  
 Scott, Paul E.  
 Schier, Mr. G. F.  
 Schmidt, John  
 A Friend  
 Schorgl, Mr. and Mrs. Charles Louis  
 A Friend  
 Schulte, Miss Toni



Seifreid, Mr. and Mrs. J. F.	Tighe, T. G.
Sere, Mr. B. J.	Tobin, Mr. and Mrs. J. W.
Shaffer, Sarah Anne	Tom and Darleen
Shaw, Mr. A. R.	Tom and Theresa
Shepherd, Connie	Triplett, Miss Maurline
Sheridan, Mr. and Mrs. John M.	Tucker, Mr. and Mrs. S.
Sheets, Dr. and Mrs. James	Toohey, F. L.
Rosemary Shop, The	Turner, Mr. and Mrs. G. L.
Singer, Mr. and Mrs. K	Tutera, Mr. and Mrs. Frank
Simma, Mr. and Mrs. D.	Uncle Jimmy
Sigourney, Sally	Vaughan, R. W.
Sister Jean Anthony	Vernboer, Melanie
Smith, Mr. and Mrs. E. B.	Venable, Floyd
Smith, Ruth Ann	Village Radio and TV Company
Smith, W. B.	Vittorino
Smith, Chris C.	A Friend
Smith H. R. Realty and Investment Co.	Mack, Kurt
Smart, Sharon	Waters, Mr. and Mrs. E. F.
Smart, Mr. and Mrs. J. C.	A Friend
Soward, Mr. and Mrs. B. W.	We are Small But Mighty
Sickman, Arden	Wells, Nancy
Sullivan, Mrs.	Werder, Mr. and Mrs. P. M.
Sullivan, Genie	Webster, Miss Ann
Stadler, Frances	Wells, Joe
DART Staff, The	Wells, Janet
Stallone, Mr. and Mrs. Sam	Whalen, Mr. and Mrs. E. E.
Stearns, Lewis F.	White, Kathy "58"
Steffen, Mrs. L. F.	White, Mr. and Mrs. Michael
Stule, Greg	Wiesner, Barbara
Stein, Mr. and Mrs. E. J.	Wilk, Mr. and Mrs. Joseph
Stevenson, Miss Judith	Wilaman, Mrs.
Stephens, Mr. and Mrs.	Willman, Mrs. George
Steve and Jan	Wilson, Dr. and Mrs. T. J.
Stevens, James and Florence	Wilson, Edwina
Stormy and Dee	Winkler, Mr. and Mrs. D. J.
Stubbs Realtors	Winkler, Mr. and Mrs. L. C.
Strayer, Kathy	Wogan, Monsignor
Svoboda, Mr. and Mrs.	Woster, Joanne
Swartz, Mrs. J.	Woster, Mr. and Mrs. W.
Swyden Cleaners	Wurst, Frederick
Thompson, Pam	Young, Mr. and Mrs. J. T.
Thompson, Bill, Insurance	Zacher, Anna Marie
A Friend	Zacher, Mr. and Mrs. G.
Tierney, Mr. and Mrs. E. R	Zacher, Mr. W. A.

**NORGE COIN OPERATED DRY CLEANING  
FOR**

FOR INFORMATION CALL  
COMMERCIAL LAUNDRY AND DRY CLEANING MACHINERY SALES  
5806 TROOST K. C., MO. EM 3-1660

# BUSINESS PATRONS

## A

AAA PLUMBING COMPANY  
2014 Indiana BE 1-2240

R. E. ADAMS DRUGS  
5450 Troost

ALADDIN BEAUTY COLLEGE  
6040 Troost EM 3-3440

ALADDIN RUG COMPANY  
"The Home of Fine Carpeting"  
3959 Broadway

ALD KENNELS  
8343 Wornall Rd. EM 3-1145

ALEX & ANGEL AT BERKSON'S  
11th & Main

A FRIEND

ALLIED TILE COMPANY  
4641 Troost LO 1-4686

ALPHA FLORAL COMPANY  
1111 Walnut VI 2-9873

ALTA'S RECORD CENTER  
\$1 off on all L.P.'s  
6307 Brookside HI 4-6873

ALTMAN DIAMOND SHOP  
101 E. 11th Street

AMBASSADOR CLEANING CO.  
3728 W. 95th-7621 Troost

THE AMERICAN BRASS CO.  
106 W. 14th Street

AMERICAN CAN CO.  
4810 Belleview PL 3-1125

ANCIENT ORDER OF HIBERNIANS  
Division 1-Jackson County

ANDERSON CLEANERS  
Alterations-Draperies Cleaned  
4554 Main

ANONYMOUS

ANTIQUÉ (USED) BRICK CO.  
4623 Mission Rd. TA 2-2670

A FRIEND

ASSOCIATOR REALTY CO.  
7221 Troost-6300 Blue Ridge  
DE 3-6300 FL 3-0300

ASSUMPTION CHURCH  
318 Benton

ASTA PRODUCE CO.  
321 Walnut VL 2-9416

DR. JAMES A. ATCHITY  
2500 Johnson Drive

CHARLES AYLWARD, JR.  
5715 Charlotte

A FRIEND

MAURINE AYLWARD  
610 East 65th Terr.

## B

B. A. HIGH FIDELITY  
1014 McGee

BARNES FLOWERS  
Hiway 50 in Fairway

BARRET FITCH NORTH CO.  
New York Stock Exchange  
1006 Baltimore

A FRIEND

BARTELS AND SHORES  
1400 St. Louis Ave.  
GR 1-0727

BASEMENT WATERPROOFING CO.  
8120 E. 74th St. FL 6-0243

BEAUTI-SALES CO.  
1003 Topeka Blvd.  
Topeka, Kansas

THE BEAUTY MART  
4530 Main VA 1-5139

BELSA W MACHINERY  
Westport Road

BENJAMIN'S STABLES  
Riding Parties  
Hayrides SO 1-5055

BENJAMIN STABLES  
87th & Hillcrest Rd.

VICTOR BERLINE OF PARIS  
3546 Main

BERNIE'S SKELLY SERVICE  
7700 State Line  
AN 9-4567

BEST JEWELRY & OPTICAL  
3928 Main

A FRIEND

FRANK BIANDO  
1415 E. 55th.

BILL & PAM INCORPORATED  
9 East 53 Terr.

BLAYLOCK'S PHARMACY  
7150 Prospect

BIRCHWOOD-A Fine  
Residential Community by Wells

BLUE VALLEY FOUNDRY  
7011 East 12th BE 1-7556

H. J. BOHNY COMPANY  
Manufacturer's Agency  
Plumbing

BOOT'S TAVERN  
4707 Troost

REV. LARRY BOSSERT  
Our Lady of Good Council  
3934 Washington

JOHN BOUTROSS CO.  
1002 McGee HA 1-6906

CECILIA BOWEN

BOYLE POULTRY CO.

CHASNOFF'S  
1011 Walnut

BRANDMEYER MEAT CO.  
Meats and Provisions  
1119 E. 12th BA 1-2231

BRANDMEYER'S GROCERY  
1501 Westport Road

BRANHAM AUCTION AND SALES  
7001 North Oak Box 212  
Gladstone, Missouri

A FRIEND

MR. & MRS. FRANK BRENNAN  
638 W. 67th EM 3-2207

E. L. BRIDE CO  
P.O. Box 7075

MR. BROCK  
Community Beauty Shop  
JE 1-9729

BROOKSIDE CLEANERS  
645 E. 59th-313 E. 55th

THE BROOKSIDE HOTEL  
5401 Brookside Blvd.

EDWARD J. BROWNE  
4549 Mercier

A FRIEND

J. C. NICHOLS CO.  
310 WARD PARKAY



J. LESTER BROWN REALTORS  
5106 Johnson Drive  
HE 2-5000

BROWN & WILSON PHAR.  
63rd & Oak

JAMES R. BROWNE  
3300 Penn. LO 1-0030

BUDGET FABRICS  
3949 B Main VA 1-9572

"THE BULLETIN"  
11th & Main  
Employment Specialists

BUNNY'S CARD & GIFT  
Red Bridge Shopping Center  
531 E. 111th

A FRIEND

MR. & MRS. J. J. BURNETT  
AND FAMILY  
21 West 52nd

BUSINESS SUPPLY  
415 West 75th Street  
EM 1-3954

C  
E. A. CALLAWAY & SON  
1918 Paseo

CAMPUS BOOK STORE  
5600 Main

JOHN R. CAMPBELL  
412 Commerce Trust Bldg.

A FRIEND

RICHARD CANTERBURY  
Pianist-Composer-Teacher  
110 E. 58th VA 3-3028

CAPPS & CLARK PRINTING CO.  
2504 E. 31st WA 1-1200

CAREER CONSULTANTS  
1509 W. 43rd.

CARLSON BAKERY  
1509 W. 43rd.

CARLYLE STUDIOS - PORTRAITS  
1127 E. 31 LO 1-3703

AV CARRIKER CONTRACTOR  
6801 Englewood FL 6-4971

CARVER HOTEL  
2606 Troost GR 1-3966

CASTAWAY LOUNGE  
4334 Main

KAREN CASTER

ST. CATHERINE'S CHURCH  
106th & Grandview Rd.

ST. CATHERINE'S CHURCH  
4100 East 106th

CATHEDRAL OF THE IMMACULATE  
CONCEPTION  
416 W. 12th

ST. CATHERINE'S REALTY CO.  
10818 Greenbriar Rd.  
SO 1-2407

CENTRAL CHEMICAL CO.  
3130 Brinkerhoff  
MA 1-6542

CHERRITO CELERY CO.  
421 Walnut

ST. TERESA'S CHORAL CLASSES

A FRIEND

CHRIST THE KING CONVENT  
425 W. 85th

CITY SALES  
305 Walnut

CLARA'S FLOWERS  
827 East 83rd

SENIOR CLASSICAL CLUB  
St. Teresa's Academy

CLUB MICHAEL'S RESTAURANT

A FRIEND

HOMER COLLINS  
9015 New 40 Hiway  
Independence, Missouri

COMMERCE TRUST CO.  
922 Walnut

COMPTOMETER SCHOOL  
Key Punch-Comptometer Training  
1005 Grand Room 335

CONCRETE FOUNDATION CO.  
Henry & Charles Dusselier  
6800 Manchester  
FL 3-0900 WA 3-8348

CONCRETE MATERIAL, INC.  
727 Kansas Ave.

MARY CONDON INTERIORS  
103 W. 47th VA 1-3316

CONSOLIDATED CAB  
CH 1-1400

JOHNNY COON AGENCY  
2201 Grand VI 1-4795

L. COPPAKAN & SONS  
100 E. 3rd St.

LES COPLEY ORCHESTRA  
RA 2-2250

CORWIN'S  
Overland Park, Kansas

A FRIEND

COSENTINO BROS.  
Supermarket & Pharmacy  
4300 Blue Ridge Blvd.

COUNTRY CLUB MARKET  
5636 Troost

COUNTRY CLUB STORE  
122 West 63rd St.

T. EUGENE CRAWFORD  
Jones & Laughlin Steel  
Funston & Chrysler Rds.

CREST ELECTRIC CO.  
306 W. 77th Terrace

THE CRUSADERS  
Socj Hop-Coke Bar  
For Parties DE 3-9664

CUSTOM BUILT CABINETS  
SO 1-1248

RON CYR FAMILY  
9816 Jarboe

A FRIEND

D  
DALES HDWE. & SUPPLY  
7921 Sante Fe Drive  
Overland Park, Kansas

DALTON'S FLOWERS  
NI 2-2112  
Kansas City Delivery

R. E. DALY AND CO.  
1011 Temple Building

DANCELAND BALLROOM  
JE 1-9994

DANIEL'S CAMERA REPAIR  
1018 E. 48th IO 1-1980

DARGIL'S WARDROBE CLEANERS  
4213 Main

MR. & MRS. C. DARRAH

DAVIS D-X  
5347 Troost

DEADY CHEMICAL COMPANY  
Henry A. Malley  
Robert J. Malley

THE JOE DeBLASE FAMILY  
425 North VanBrunt

MERLE DECKER REALTOR  
6 E. 2nd St. LA 4-3333

JOHN DEERE COMPANY  
3210 E. 85th St.

JACK DeFOE

A FRIEND

DeFOE & SONS TOBACCO & CANDY  
802 Southwest Blvd.

DeFOE PRODUCE CO.  
401 Walnut

DeGROSS PHILLIPS SERVICE  
4800 Main

MAURICE DeHAENER INS. CO.  
Parkville, Mo. SH 1-3221

DeMARIA FRUIT CO.  
313 Walnut

JAMES B. DEVANEY  
7944 Jarboe

THE DISPENSARY  
Kansas City Medical Center  
1222 McGee

DOMINICK'S TRANSMISSION  
621 Admiral  
GR 1-8880 or BA 1-4628

DoOLITTLE EQUIPMENT CO.  
1301 Westport PL 3-4455

DOUBLE I SUPPLY COMPANY  
Shawnee & Adams

DOUG GAIE COMPANY  
Merchandise Mart  
2201 Grand

DOUGLASS RUG CO.  
7217 Troost JA 3-6190

Do you read the  
WEDNESDAY MAGAZINE?  
Everyone Else Does.

DRAG-N-INN  
5424 Troost

WALTER DRANGY  
General Home Remodeling

A FRIEND

DOCTOR DREILING  
63rd St. Drive-In

DRS. DREILING, DREILING AND  
DREILING

DRIVER'S LAUNDERETTE  
5549 Troost

DRUMMOND & SONS CLEANERS  
Shirt Launderers  
6328 Brookside Plaza

DUFF'S GROCERIES & MEAT  
MARKET  
6844 Prospect JA 3-9800

DUFF & REPP  
1216 Main FR 1-7200

FRANK DUSSELIER  
Basement Builder  
11616 W. 55th ME 1-7017

GEORGE DUSSELIER FOUNDATION  
BUILDING CO.  
6723 Sycamore FL 3-2171

ROBERT E. DUSSELIER  
Basement Builder  
11702 W. 59th Terrace

DUX DOES EVERYTHING--  
SO BEWARE

E  
EDDIE MAY'S PLACE  
6516 E. 12th

EDDIE'S TAVERN  
8025 Troost

EDWARDS & HUGHES CONOCO  
75th & State Line EM 1-1300

BEN EISMAN C. P. A.  
300 Victor Building  
HA 1-1036

A FRIEND

ELECTRIC UTILITIES CO.  
4118 Broadway

ST. ELIZABETH'S CONVENT  
2 E. 75th

EPIC MFG. CO.  
600 E. 95th

EQUITABLE LIFE OF IOWA  
Arcade "E" Board of Trade  
F

FADDIS MOTOR CO.  
62nd Terrace & Main

BILL FAGN, INC.  
1111 W. 29th

FAMOUS RESTAURANT  
Cocktail Lounge  
1211-1213 Baltimore

FARMERS INSURANCE GROUP  
Ed Burns Ins. Agency

110th Hillcrest  
SO 1-1668

FASENMYER CHEVROLET  
9617 East 50 Hiway

H. E. FESSLER  
Rebuilds Wrecks  
15th & Olive

FICKE ELECTRICAL CO.

NOEL W. FIELDS  
301 N. Noland

RUSS FIORELLA'S  
Smoke-Stack Bar-B-Q  
8129 S. 71 Hiway

G. R. FISHER MEAT CO.  
418 E. 3rd St.

SUZANNE FLANER  
3600 Jefferson

DR. & MRS. FLATLEY

FLEMINGTON DISTRIBUTORS  
2516 Holmes EM 1-9588

FLURY HINDERKS & CO.  
212 W. 75th EM 1-2211

FLYING ADJUSTMENT SERVICE  
115 East Armour Blvd.

A FRIEND

REV. H. L. FORGEY

FOX'S DRUG  
63rd & Raytown Rd.

FRANKLIN 66 SERVICE  
6244 Main

FRANK'S BARBER SHOP  
1415 East 55th

FRED HARVEY RESTAURANT  
Union Station

FRIEDSON PHARMACY  
400 East Gregory JA 3-3655

FRUIT SUPPLY CO.  
213 Walnut  
G

DON GAINES  
1820 Troost

GARDNER'S SERVICE  
50 Hiway and Gregory  
FL 6-2968

Roseann Gargotta  
Helen Alder  
AVILA Staff of 1960

GASOLINE ALLEY  
Main Entrance  
Lake Lotawana

KISSICK CONCRETE CO.  
HICKMAN MILLS, MO.

JUNIOR MATH CLUB

GAUSNELL-DOHERTY  
5000 Johnson Drive  
HE 2-5850

GENE'S BARBER SHOP  
4606 Village Green  
Flat Tops a Specialty

GEO. P. REINTJES CO.  
2517 Jefferson

A FRIEND

GLENCO CLEANERS  
5101 Main

GERHARDT FURRIERS  
Plaza

GOLDEN ARROW, INC.  
5701 Troost

GRANDVIEW BANK  
724 Main Street

STANLEY GRACE REAL ESTATE  
318 S. Douglas  
Lee's Summit, Missouri

GRANDVIEW ROLLER RINK  
13015 15th Street

M. L. GRAYBEAL JEWELRY  
4746 Prospect

GRAZIANO'S MARKET  
5500 Paseo JA 3-5811

GRANT RENNE & SONS  
1908 Vine BA 1-6076

GREGORY "66" SERVICE  
7101 Troost DE 3-8900

GREGORY SKELLY SERVICE  
7101 Prospect

GREGORY BEAUTY SHOP  
406 E. Gregory

GRIFFITH OLDSMOBILE  
6200 Troost EM 1-1991

A FRIEND

GULLEY'S FLOWERS  
Say it with Flowers  
Flowers Say It Best  
3024 N. 24th St.  
FA 1-3614

GUYS NUT & POTATO CHIP CO.  
2215 Harrison

C. G. HAAKE & SONS  
1820 Main Street

HAL'S HAIR FASHION  
4808 Bellevue

EARL HANKINS ROOFING  
2617 Southwest Blvd.

JACCARD JEWELRY CORP.  
1017 WALNUT

HARKER PHOTOGRAPHS  
6132 Blue Ridge Blvd.  
FL 3-2525

MARTIN G. HATFIELD

TOM HAYES JR. REAL ESTATE &  
INSURANCE  
Columbia Bank Building

HELZBERG'S  
House of Treasures  
400 Nichols Rd

HEN HOUSE SUPER MARKET  
8230 Wornall Rd. EM 3-2323

HENRIETTE EVERETT  
HARDIN & STOCKTON CO.  
5600 Johnson Drive

HENRY ANSWERING SERVICE  
18 W. 40 St. Way VA 1-8100

A FRIEND

HERDMAN'S CONOCO SERVICE  
646 E. 63rd JA 3-9878

H. J. HODES COMPANY  
2751 Gillham VI 2-7795

HARRIMAN'S DOG KENNELS  
121 E. 69th St.

HODKIN'S MARKET  
402 East Gregory

HOLIDAY HEALTH COUNTRY CLUB  
5032 Main PL 3-6767

HOLY NAME PARISH  
2201 Benton

HORWITZ & GARGOTTA PRODUCE  
COMPANY  
25 East 3rd St.

HOWARD COOK REALTY  
Harold & Penny McCullough  
4604 Vermont FL 3-8679

HOWARD PHILLIPS "66"  
6821 Johnson Drive

A. L. HUBER & SON  
Homebuilders  
6540 Charlotte

JOHN HUGHES  
COLGATE PALMOLIVE CO.  
1703 Wyandotte

HUTCHISON BROKERAGE CO.  
4733 Bellevue

HYMAN'S FABRICS  
411 W. 75th

IMMACULATE HEART OF MARY  
CHURCH  
2412 Swope Parkway

INDIANA VALLEY STABLES  
3412 W. 111th St.

INSURED TRANSPORTATION  
SERVICE  
WI 2-1600

ITALIAN GARDEN'S  
1110 Baltimore

J  
SAINT JAMES CONVENT  
3941 Tracy

JANIE, KAREN, & MARION  
Graduates of 1960

THE JENSON FAMILY

A FRIEND

JEROME AND ASSOCIATES  
4448 Bellevue

JAY'S CONOCO SERVICE  
85th & Wornall

JERRY & MARGIE

JERRY'S CONOCO SERVICE  
8909 Wornall JA 3-9929

J. C. JONES LUMBER CO.  
12914 8th St.

JOE & BILL'S SERVICE  
111 North Scott Ave.

JOE'S HAMBURGERS  
79th & State Line

JUSTRITE (CHAIN STORE)  
General Office 5930 Troost

JUSTRITE SUPER MARKET  
K  
KANSAS CITY ENGRAVING &  
COLOR PLATE  
1014 Locust

THE K & M ENGINEERING CO.  
512 E. 26th JA 1-6381  
Heat is our Business

KANSAS CITY NATIVE STONE

KANSAS CITY NATURAL SLATE

KANSAS CITY SOUND SERVICE  
1402 Locust HA 1-2481

KANSAS CITY WHOLESALE LIQUOR  
COMPANY  
1109 Cherry

KAPLAN FABRICS  
4764 Broadway

KAW ROOFING & SHEET METAL  
2105 N. 13th Street

KAYCEES SUPPLY CO.  
Manager-John P. Clark  
207 W. 77th

K. C. COMPOSITION CO.  
411-417 East 8th

A FRIEND

KISSICK AND SON CONSTR. CO.  
HICKMAN MILLS, MO.



K. C. FRUIT CO.  
317 Walnut

HARRY KENNALEY INS. AGCY.  
1600 Genesse HA 1-2190

FATHER V. L. KEARNEY, PASTOR  
Christ the King Parish

KELLEY ASBESTOS PRODUCTS  
2030 Grand

MR. & MRS. J. E. KERWON

KLUVA'S  
833 Minn. DR 1-1156

KNIGHT'S OFFICE SUPPLIES &  
BOOKS  
318 East 51st

A FRIEND

RANDY KNIGHT  
J. C. NICHOLS CO.  
LO 1-3456

ANN KNOFF  
2900 Brown FA 1-9345

KIRBY VACUUM CLEANERS  
2934 Cherry

KING LOUIE OF KANSAS CITY

KRIZMAN HAIR FASHIONS  
3748 W. 95th Street

A FRIEND

L  
LARK'S STANDARD STATION  
5051 Main

LATHROP INVESTMENTS  
Room 426 Lathrop Bldg.  
VI 2-4652

LATIMOR MOTORS  
301 South Main, Independence

LEAWOOD BEAUTY SALON  
2515 Somerset

LEAWOOD CLEANERS  
2517 Somerset MI 9-0700

LEAWOOD SWIM TEAM  
Leawood, Kansas

JIM LECHTENBERG  
Anything in Painting  
12 E. 57th Terrace JA 3-4712

LEE'S BOOTERIES  
Formerly Oviatt Shoe Store  
6309 Brookside Plaza

LEE'S SUMMIT CLEANERS  
316 S. Douglass

LILLIES CONOCO SERVICE  
7423 W. 63rd

LIPARI'S THRIFTWAY  
800 Kansas Ave.

PAUL M. KLEIN AGENCY  
6155 OAK STREET

HENRY LIPPELGROES PAINTING  
AND DECORATING  
1607 Oak HA 1-2244

LITTLE FLOWER CREDIT  
5634 Woodland Ave.

LODDE ENGINE & MOTOR SERVICE  
5632 Troost JA 3-4181

LLOYD'S BEAUTY SALON  
7711 W. 63rd HE 2-7272

A FRIEND

LOOSE PARK PLBG. & HTG.  
Repair & Remodeling  
1104 E. 43rd

LUCKY STRIKE LANES  
404 W. 90th EM 3-3131

M  
DON MAGNESS  
DURHAM MOTORS  
6267 Troost

MAIN BEAUTY SALON  
Truman Corners

GEO. MALONE  
Sheet Metal Works  
2611 East 34th St.

MAPLE HILL BESTWAY STORE  
2412 S. 34th St.

MARLBOROUGH CLEANERS  
8000 Paseo

SHIRLEY MARLEY-BARBARA GROSS  
DANCE STUDIO  
2510 1/2 E. 72nd St.  
JA 3-9650

MARTIN'S FINER FOODS  
7960 Lee Blvd.

MRS. LEONARD MARTIN  
5721 Cherry

MARTIN'S SANITONE CLEANERS  
5001 Prospect

MARVIN'S TOY & CAMERA SHOP  
7956 Lee Blvd.

MARZOLF FLOOR SANDING CO.  
7601 Harvard FL 3-2991

THE SENIOR MATH CLUB  
St. Teresa's Academy

SOPHOMORE MATH CLUB  
St. Teresa's Academy

W. A. MATHES MEATS  
526 Central DR 1-4835

WILLIAM J. MATHEWS  
MISSION HILLS COUNTRY CLUB  
5500 Mission Drive

A FRIEND

MRS. JOHN MAYER  
Chatham Hotel

MAYFAIR FOOD MARKET  
4100 E. 39th St.

McDANIEL TITLE CO.  
Title Insurance  
Abstracts-Escrows

A FRIEND

McKESSON & ROBBINS, INC.

W. J. McMAHON  
7320 Lydia

J. L. McNEEL DDS  
7400 Wornall Rd.

MR. & MRS. JAMES McQUEENY

MEADOWLAKE BEAUTY SALON  
7438 Eaton Ave.  
One block west of State Line  
EN 2-3033

MEADOWLAKE DAIRY CO.  
5101 E. 24th  
Mr. Edward Atchity

MEADOWLAKE GREENHOUSES  
79th & Stateline

MEIRHOFF'S  
German & American Food  
1023 East 63rd

A FRIEND

MELODY'S BEAUTY SHOP  
In and Out in 35 Minutes  
No Appointment Needed  
115 Grand Rm. 308 JA 1-8960

MERCO-OVER HEAD-DOOR CO.  
All Types Wood and Steel Doors  
3234 Forest JE 1-9000

METZLER BROS. & CO.  
3535 Broadway

CHARLES S. METZLER  
4712 Roanoke Parkway

ST. MICHEAL ARCHANGEL  
CHURCH  
5007 W. 24th St.

MICHAEL'S  
Fine Clothes for Men  
Main at 19th

GEORGE C. MICHALE  
PROVIDENT MUTAL LIFE INS.  
1010 Grand

MID-CONTINENT ALL STARS  
Call Chuck Herzon

MIDLAND ART STATUARY  
NOVELTY COMPANY  
7212 Prospect

MIDLAND CAMERA SUPPLY  
1300 Grand GR 1-0888

HOLIDAY SPORTSWEAR  
311 W. 8TH STREET

MID STATES ORNAMENTAL CO.  
5321 E. 9th

MIDWEST BAR  
900 McGee

M. G. MILENS & SONS  
7416 Wornall

MILLS GIFT SHOP  
3600 Broadway

A FRIEND

MR. & MRS. J. MINIACE

MISSION BOWL  
5399 Martway

MISSION HIGHLANDS SUPER  
MARKET  
6000 Mission Rd.

MISSOURI LINE CLUB  
1710 West 45th

MR. & MRS. L. O. MONSON  
741 S. Green  
Wichita, Kansas

JOE MONTE-DECORATOR  
740 Park HA 1-5643

PAT MORRIS  
6916 Chestnut

MORRISON'S TEXACO SERVICE  
2025 Indep. Ave. HA 1-9078

RAY F. MOSELY, JR.  
1111 Grand

MOSLER SAFE COMPANY  
1419 McGee VI 2-7949

MOVA WALL OFFICE PARTITIONS  
4941 Tracy

MUEHLBACH FLOWER SHOP  
1200 Baltimore

MR. & MRS. W. T. MULROY

MURPHY DRUGS  
7425 Broadway  
A FRIEND

MURPHY FINANCE COMPANY  
6226 A Troost Ave.

MISS ROSALIE MOSER

MISS ROSALIE MUSER  
N  
NATIONAL GARAGE

NAT NAST BOWLING SHIRTS  
816 Central

NED FORTNEY REALTORS  
4841 Indep. HU 3-4373

NEENAN CO.  
5029 Prospect WA 4-1182

MONSIGNOR JAMES P. NICHOL  
6415 Holmes

NORTHEAST FLORIST  
4901 St. John BE 1-3977

ALFRED E. NUEMAN &  
CHARLES REID, JR.

NEW MODEL CLEANERS  
Shirt Salon  
3 Hour Service-No Extra Charge  
210 W. 75th

NEW RESEARCH HOSPITAL  
Meyer Blvd. & Prospect

MR. & MRS. CARL NOTHNAGEL  
6041 Locust

OAK PARK LAUNDRY AND DRY  
CLEANERS  
2611 E. 39th WA 4-7530

O'BRIEN REALTY AND INS.  
12718 S. 71 Hiway  
THOMAS F. O'CONNOR

ODDO'S MARKET  
8016 Wornall

O'KEEFE TRAVEL AGENCY  
Balcony of Wolf Brothers

OLD AMERICAN-RUBEROIN  
7600 Truman Rd.

THE OLD COLONY BOOK SHOP  
6231 Brookside Plaza

ORSCHELN BROS. TRUCK LINE  
3500 Gradner

O'SULLIVAN'S RESTAURANT  
12th & McGee

OUR LADY OF THE PRESENTATION  
CHURCH

P  
PACE & BLEYTHING ASPHALT  
PAVING COMPANY  
4201 E. 60th Terrace JA 3-1085

C. PALERMO PRODUCE CO.  
23 West 3rd St.

PARK MANOR CLEANERS  
STA Uniforms \$1.15  
118 W. 63rd-7114 Wornall  
LO 1-3730

PASANO'S  
8411 Holmes

MR. & MRS. J. PASSLERT AND  
FAMILY

PEOPLE'S FINANCE CORP.  
1805 Vine BA 1-2672

PIANE LIQUOR STORE  
3955 Main

PISCIOTTA PRODUCE CO.  
411 Walnut

PIT BAR-B-Q  
7220 Troost

A FRIEND

PLA-MOR BOWL  
3140 Main VA 1-7847

C. PLAMP CO. REALTORS  
New & Used Homes  
Insurance Broker  
101 E. Gregory EM 1-0134

PLAZA-GILLPATRICK  
LAUNDRY & DRY CLEANERS  
4200 Penn. VA 1-6885

CARL POLITO PRODUCE CO.  
313 Main St.

POTRAIT COPY CO.  
4204 Troost

PRAIRIE VILLAGE PEACE OFFICERS  
ASSOCIATION

PRE-CISION RADIO & TELEVISION  
CO.  
7208 Prospect

PREFERRED ACCEPTANCE CO.  
1242 Grand MA 1-2646

A FRIEND

PRESIDENT GARDENS DRUGS  
8227 Troost

PRESTO FOOD PRODUCTS  
2756 Cherry VI 2-9062

Q  
QUALITY MARKET  
9644 South 71 Hiway

QUIGLEY'S BOWLING BALLS  
1506 Broadway

A FRIEND

R  
RAY'S MARKET  
Lake Lotawana

RAFSKY & SON GROCERY  
623 Ann Ave. LO 1-0900

RICHARD G. RAHNER DDS  
623 Ann Ave.

REX CIA WSON & COMPANY  
1520 Main VI 2-6863

RETAIL GROCERS  
810 E. 31st

MR. JERRY RENICK  
Fox's Drug Store

RENNER'S SHOE REPAIR  
4632 Wyandotte

A FRIEND

RELIANCE PRINTING CO.  
403 E. 18th GR 1-7967

REFRIGERATOR EQUIPMENT CO.  
2400 Grand

HARDWICK CONSTR. CO.  
11128 SOUTH 71 HIGHWAY



REED & BROWN HAULING CO.  
1201 Manchester

REDEMPTORIST FATHERS

A DONOR

REDEMPTORIST FATHERS  
OUR LADY OF PERPETUAL HELP  
CHURCH

E. J. REDDING LUMBER SALES  
211 Westport Rd.

G. FINDLAY REED, INC.  
3619 Broadway JE 1-0351

RED BRIDGE PAY LESS  
11118 Holmes Street

REPRO-TONG

MARK RICHARD  
Distinct Feminine Apparel  
Ruskin Heights Shopping Center

A. E. RILEY & ASSOCIATES  
A. Everett Riley, David E. Riley  
Estate Planning-Business and  
Partnership Insurance  
Life, Health and Accident Ins.  
5515 Broadway

A FRIEND

RILEY INSURANCE AGENCY  
2103 Swift Ave. BA 1-5992

RILEY'S JEWELRY  
6118 Johnson Drive

REIDER FOOD CENTER  
67th & Blue Ridge

A FRIEND

REIDER'S FOOD CENTER  
8744 Blue Ridge

ROBBIES BARBEQUE  
1403 E. 39th

ROCK WITH THE ROYALS  
Joe Meyer's FL 3-2211

L. D. ROBBINS  
5846 Prospect

ROONEY'S MART TIRE SERVICE  
7200 McGee

ROWE'S SINCLAIR STATION  
75th & State Line

MONSIGNOR JOSEPH C. RUYSSER  
St. Catherine's Parish

MR. & MRS. DONALD RYAN

MR. & MRS. JOHN P. RYAN

RENE W. RYAN  
Prescription Shop  
101 New Brotherhood Bldg.

GEORGE W. RYAN C. P. C. U.  
General Insurance  
212 W. 75th EM 1-2210

THE RUMBLE  
3 West 70th

S

SALON BEAUTY  
336 West 75th

BILL SANDERS-LEAWOOD  
Standard Service  
85th & State Line

MR. W. G. SCHMIDT C.P.A.  
7333 Broadway

SCHOER MANUFACTURING &  
METAL STAMPING COMPANY  
2221 Campbell GR 1-0488

E. K. SCHURIG  
10310 High Drive

SCOTT'S SERVICE  
6436 Truman Rd. CH 1-8107

A FRIEND

A. B. SIEGFRIED REAL ESTATE  
3rd St. & 50 Hiway LA 4-3320

SEYMOUR ROTH  
#1 on the Mall  
Prairie Village

SHARP BROS. CONS. & RFG.  
1014 E. 19th

SHAWNEE JEWELRY STORE  
11115 Johnson Drive

A FRIEND

DR. J. A. SHEETS  
Chiropractor  
6030 Troost JA 3-4723

SILVER FLOWER SHOP  
3042 Main

SHORTY DALTON  
International Harvester

SIDNEY'S DRIVE-IN  
Linwood-Gilham VA 1-7500  
Ward Parkway WA 1-6000

SID VAN KEIRSBILCK  
Basement Contractor  
5920 Garnett ME 1-6494

SILHOUETTE BEAUTY SHOP  
1310 Central DR 1-9212

THE SINCLAIR FAMILY

SLATER TILE & METAL CO.  
2514 Summit HA 1-6205

RAY SMITH FORD  
225 West 74th Terrace  
EM 3-1333

WILLIAM J. SMITH INS. AGENCY  
9116 Walnut

SMOKE STACK BAR-B-Q  
Home of the 69'er  
8129 South 71 Hiway

MRS. ETTA W. SODEN  
843 West 57th Terrace

A FRIEND

SODEN REALTY COMPANY  
3256 Broadway

SOUTHEAST RECORD SHOP  
6946 Prospect DE 3-0838

SOUTHEAST STATE BANK  
3121 Prospect

SOUTHERN PLAZA EXPRESS, INC.  
1731 Tracy

SOUTHEAST CERAMIC TILE CO.  
7144 Montgall

A FRIEND

SOUTHSIDE CLEANERS  
3039 Prospect

SOUTHSIDE SERVICE  
42nd & Westport

SOUTHWEST ORNAMENTAL IRON  
1722 Tracy HA 1-4577

SPALITTO PHARMACY  
2601 E. 18th

SPECTOR PRODUCE CO.  
309 Main Street

MR. LEE SPRUILL  
2 West 66th Street

LAWRENCE STADLER  
Manufacturer's Representative  
SO 1-7211

A FRIEND

E. F. Stanton, E. A. Thornhill  
KLUGHART MACHINERY CO.  
1295 Woodswether Rd.

STASI'S ON 5th STREET  
1026 East 5th

STARR REALTY COMPANY  
8525 Holmes

DANCE TO THE FABULOUS BLUES  
Jim Statler and the "Strikers"--  
Private Parties and Dances SO 1-7211

A FRIEND

STEELE CLEANERS  
5935 Troost

ST. FRANCIS XAVIER CHURCH  
52nd. & Troost Avenue

ST. JOHN'S CYC  
548 Brooklin

NORTH AMERICAN SAVINGS ASS.  
1009 GRAND

TERRY DALE INC.  
4138 BROADWAY



ST. MARY'S HOSPITAL  
101 Memorial Drive

MRS. LLOYD STOAKS

STOFFLE'S BARBER SHOP  
7954 Lee Blvd.

A FRIEND

STOOS AND WILSON BROKERAGE  
6500 Inland Drive

BARBARA & SUZIE STRAYER

MR. & MRS. B. B. STRAYER

ST. THERESE CHURCH  
5814 Euclid

SUPERIOR TRANSFER CO.  
3242 Gilham Road

SUDVARG STUDIOS  
3758 Broadway VA 1-3050

R. L. SWEET LUMBER CO.  
4400 Roe

A FRIEND

HANEY SWYDEN  
T

FRANK TALLMAN INSURANCE  
AGENCY  
3256 Broadway VA 1-3800

THOMPSON'S SERVICE STATION  
7048 Wornall Road

THERESA 'S BEAUTY SHOP  
4811 Jefferson

T & W MANUFACTURING CO.  
1529 Cyrstal

R. C. THEESFELD

THEA TER ENTERPRISES  
1213 Wyandotte

TIERNEY STATIONERY  
309 Westport Road JE 1-7455

A FRIEND OF ST. TERESA'S

TOROTEL INCORPORATED

REVEREND PATRICK TOBIN  
Visitation

TOWN & COUNTRY SHOP AND  
SHOE SALON  
3914 Main WE 1-7985

MR. & MRS. M. F. TOWNSEND, JR

MRS. B. C. TROWBRIDGE

GLORIA TRIPP LINENS AND GIFTS  
6215 Oak

TRAFFICWAY FOOD MART  
3313 Summit

TURNER GROCERY  
8401 N. Oak Trafficway  
GL 2-4482

A FRIEND  
U

THE UNIVERSITY BANK  
63rd. & Brookside

THE UNIVERSITY BANK  
Member F. D. I. C.  
63rd & Brookside

UNION CLOTHING COMPANY  
1228-32 Grand BA 1-7070

UNITED SUPER MARKET  
8929 Wornall Rd. EM 1-1448

A FRIEND  
V

VALLEY BROKERAGE CO.  
1422 St. Louis Ave.

VAN LEASING CO.  
2715 Truman Rd.

VERN'S BEAUTY SALON  
12918 Grandview Rd. SO 1-6039

VISITOR'S CLARK STATION  
80th & Wornall

A FRIEND  
W

WAGNER FUNERAL HOME  
Linwood Blvd. & Wyandotte

WALDON BEAUTY SHOP  
519 W. 33rd. VA 1-9372

WALDON GRAIN CO.  
Seeds and Fertilizers

WALDON T. V. SERVICE  
Hi-Fi Stereo Records  
211 W. 75th.

W. J. WALTON-OLD PLANTATION  
Barbeque 2206 Charlotte

A FRIEND

VICTOR F. WASLESKI, JR.  
Television Repair FL 3-4233

WASSON FABRICS  
Manufacturing  
2900 McGee Trafficway

JOHN S. WATKINS & SON

LOREN L. WATTE CONSTRUCTION  
7310 Sycamore FL 6-2065

A FRIEND

WEINTRAUB BAKERY  
4802 E. 27th WA 1-5906

WESTBROOK CLEANERS  
Alterations 1  
1021 E. 63rd

WESTBROOK VARIETY STORE  
7502 Troost

WEST-HALL PHOTOGRAPHY  
7935 State Line

WESTPORT GLASS AND PAINT  
COMPANY  
425 Westport Rd. WE 1-7347

WHB RADIO  
11th Floor Park East Hotel

A FRIEND

WHITTAKER UPHOLSTERY  
8383 Wornall Rd.

WILLIAM'S MEAT COMPANY

MAX WILLIAMS  
Manager of KCMO

A. REED WILSON CO.  
1320 McGee

ERNEST U. WINEGARDEN & CO.  
Insurance Agency  
908 Scarritt Bldg.

WISHBONE  
4455 Main

WOLFBURGERS

WOLF DRUGS  
7500 Troost JA 3-2808

WONDERLAND NURSERY  
6242 Swope Parkway

WOHLN CHEVROLET CO.  
6300 Johnson Drive

W. T. GRANT CO.  
7620 State Line  
Meadow Lake  
Y

CY YOUNG HARDWARE  
8312 Wornall Rd.  
EM 3-1000

A FRIEND

L. YUKON & SON PRODUCE  
405 Walnut  
Z

ZARDA BROS. DAIRY  
10618 West 63rd

# OUR SPONSORS

AAA LAUNDRY AND LINEN  
4120 Truman Rd.

AAA STATELINE CITIES SERVICE  
7901 Stateline

J. A. ADAMS SUPPLY CO.  
1720 Brooklyn JA 1-3700

ALTMAN-SINGLETON & CO.  
114 W. 10

BENNETT CONS. CO.  
3252 Roanoke Rd.

B & G WRECKING AND SUPPLY  
Demolition Experts  
200 S. 3rd

BLAIR PLUMBING AND HEATING  
6 Westport Rd.

"THE BLUE HILL BLACK ANGUS"  
6015 Troost

BLUE STAR FURNACE CO.  
All Types Heating & Air Conditioning

BOGDON'S CANDIES  
Fine Chocolates Party Candies  
Original Reception Sticks  
2808 W. 53rd Fairway

THE BRIDAL SHOP  
1120 McGee

BROADWAY NATIONAL BANK  
3600 Broadway

BROOKSIDE FABRICS  
126 W. 63rd St.

BRUCE SMITH DRUGS  
No. 15 on the Mall and Red Bridge

CALIFORNIA CATERING CO.  
517 Grand

PETEY CHILDERS PRESCRIPTIONS  
10900 Winner Rd.

CHRIST THE KING PARISH  
409 W. 85th Terrace

CHRIST THE KING CYC

CLAIM SERVICE CO.  
320 Border Trade Bldg.

CLARKSON CONSTRUCTION CO.  
4133 Gardner HU 3-8800

CLAUDE PARISH CHEVROLET  
Liberty, Missouri

E. J. CODY CO.  
814 W. 17th St.

CONCRETE MATERIALS, INC.  
727 Kansas Ave.

COLUMBIA NATIONAL BANK  
921 Walnut

COMMERCE TRUST CO.  
10th and Walnut

CONOCO SERVICE STATION  
10245 Stateline

CONSOLIDATED TRANSFER &  
WAREHOUSE CO., INC.  
1606 Cherry BA 1-3411

CONSTABLE-HODGINS PRINTERS  
1416 McGee

CONTEMPORARY ILLUSTRATORS  
3214 Gilham Rd.

COUNTRY CLUB BOWL  
217 E. Gregory

COUNTRY CLUB CLEANERS  
5031 Main

COUNTRY CLUB LAUNDRY &  
CLEANERS  
5028 Main

CREST FOOD CENTER  
115th and 71 Highway

CURE DE ARS PARISH  
9401 Mission Rd.

DEE'S DRUG STORE  
Lee's Summit, Missouri

DE LA SALLE HIGH SCHOOL

DOLLY MADISON CAKES  
12 E. Arueour Blvd.

J. W. DONAHOWER AND ASSN.  
620 W. 26th St.

THE ELECTRONIC INSTITUTE  
4600 Troost

FAMOUS RESTAURANT  
1211 Baltimore

FAULTLESS LAUNDRY & DRY  
CLEANING CO.  
1943 Broadway

FIRESTONE STORES  
2001 Grand

FIRST FEDERAL SAVING & LOAN  
CO.  
919 Walnut

T. J. FLEMING CO.  
647 S. West Blvd.

FRANK FLINN CONSTRUCTION  
2809 E. 85th St.

THOMAS RICHARD FINN & ASSN.  
314 E. 51st

THE FLINTKOTE CO.  
Gene Turner

FOGEL-ANDERSON CONST.  
1212 E. 8th St.

For Information on Stocks, Bonds,  
and Mutual Funds  
23 W. 10th

NEW 50 DRIVE IN THEATRE  
1100 W. 87 St.

THE PRAIRIE VILLAGE  
JONES STORE

GAETANO'S RESTAURANT &  
COCKTAIL LOUNGE  
400 E. 5th at Oak

O. H. GERRY OPTICAL CO.  
221 Professional Bldg.  
428 Ward Pkwy

GLIFF TOZIER INSURANCE  
Walter Oades  
207 Siebers Bldg.

JAMES A. GREEN, JR. & CO.  
903 Grand Ave.

GREENLEASE CADILLAC CO.  
2921 McGee Trafficway

GRAVINO'S GREENWOOD  
PHARMACY  
1510 E. 8th St.

GUY'S POTATO CHIPS  
2215 Harrison

HALLS ICE CREAM CO.  
1059 State

HEART OF AMERICA REAL ESTATE  
CO.  
103 W. 47th

HEIDELBERG CENTRAL, INC.  
800 E. 10th St.

HEAVILIN SCHOOL OF HAIR  
FASHION AND COSMETOLOGY  
5700 Troost 3951 Main

HIGH LIFE CO.  
101 W. 18 Ave.

H. J. HODES & CO.  
2751 Gilham

HOFFMAN UNIFORM CO.  
2720 W. 43rd St.

HOLIDAY HEALTH STUDIO  
5030 Main

HOME RUG CLEANING CO.  
4728 Forest Ave.

HOWARD BALDIS & SON  
4037 Brookridge Dr.

ICE SERVICE CO.  
Automatic Ice Vending  
2404 Vine St.

INDIAN CREEK INN  
1114 W. 103 St.

INTERSTATE BINDERY CO.  
3416 E. 23

KANSAS CITY INSULATION  
4900 Blue Parkway

KANSAS CITY BANK AND TRUST CO.  
Member of FDIC  
1801 Main

THE JACK KAY FAMILY

K. C. COCA-COLA  
2540 W. Pennway

KITTY CLOVER  
817 Westport Rd.

ANDY KLEIN PONTIAC  
Overland Park, Kansas

THE KROH BROTHERS  
8000 Lee

LA PIZZA - 2 Locations  
7046 Wornall 3509 Broadway

DON S. LAWRENCE INSURANCE  
112 E. 10th

LEE'S JEWELRY  
Lee's Summit, Missouri

JAN'S LIQUORS  
4106 Broadway

LUCAS, EISEN AND WAECKERLE, INC.  
916 Walnut

MONTAVY'S FLOWERS  
3600 Broadway

McCRACKEN'S ROCKHILL DRUG  
1025 E. 63rd St.

MUARHOFF'S GEMAN AND  
AMERICAN RESTAURANT  
1023 E. 63 Rd.

IN HONOR OF PEGGY MULROY

MID-CENTRAL FISH CO.  
1656 Washington

MIDWEST TYPEWRITING CO.  
800 Grand

MILLER-STAUCH CONST. CO.  
321 Railway Exchange Bldg.

C. J. MERSMANN EXCAVATING  
GRADING CO.  
110th Hornbuckel Rd.

MELLODY-McGILEY-EYLAR  
FUNERAL HOMES  
1800 E. Linwood

MONSIGNER J.P. NICHOL

NATIONAL SCHOOL  
3101 Gillham

OLD AMERICAN INSURANCE  
4900 Oak St.

O. A. S. DISTILLING CO.  
2910 Grand Ave.

PAT O'LEARY ASSN.  
2532 Johnson Dr.

SHERIFF ANVID OWSLEY

VINCENT J. O'FLAHERTY  
4117 Broadway

PALMA'S PANCAKE PATIO  
37th & Broadway

PARTER CONTRACTORS SUPPLY  
620 E. 18th

PETERSON CO.  
216 W. 17

PHYSICIANS EXCHANGE  
2826 Main

PRIER BRASS MANUFACTURING  
7801 Truman Rd.

THE PRIME RIB  
3516 Broadway

READY MIXED CONCRETE  
908 W. 25th St.

STEVE VOGLI REALTORS  
204 E. Gregory

TOM REARDON INSURANCE  
1016 Central

REGAN'S BAR & RESTAURANT  
207 Southwest Blvd.

R. B. RICE SAUSAGE CO.

RIEDERS FOOD CENTER  
8744 Blue Ridge

ROCKHURST COLLEGE

ROCKHURST HIGH SCHOOL  
PEP CLUB

ROCKHURST HIGH SCHOOL  
STUDENT COUNCIL

FRED RODE CLEANING  
4024 Rainbow

ROELAND PARK STATE BANK  
5101 Linden

RÖDENBECK CONSTRUCTION CO.

ROGERS-ATZENWEILERS

ST. ELIZABETH'S PARISH  
75th and Main

ST. PETER'S CHURCH  
6415 Holmes

ST. TERESA'S ACADEMY  
ATHLETIC CLUB

THE SALVAJOR

SEAL TEST FOODS  
3805 VanBrunt Blvd.

SELLERS & MARAUIS ROOFING  
4900 Blue Parkway

SENIOR OF DE LA SALLES

SENIOR FRENCH CLUB

SENIOR SODALITY

SUN RA' FROZEN FOOD INC.  
2750 Guninotte

A. T. SWITZER CO.  
4828 Chelsea

TIVOL JEWELRY CO.  
220 Nichols Rd.

TOBIN SEED CO.  
1317 St. Louis Ave.

DAVID F. TONNIES CO.  
MDSE Mart

TOWN AND COUNTRY FORD

WALLY'S FIRESTONE STORES

WARD PARKWAY LANES  
89th and State Line

WESTPORT BANKE  
3311 Westport Rd.

WESTPORT PLAZA BEAUTY SALON  
2500 Johnson Dr.

W. E. WHITE SALES CO.  
228 W. 4th St.

WHITE ZESTO DRIVE IN  
9305 E. Gregory Blvd.

RAY WILSON SHOES  
11144 Blue Ridge  
Hickman Mills



WISCONSIN



BOUND



ANTONIO'S PIZZERIA  
43RD AND MAIN  
KANSAS CITY, MISSOURI







*CANDID  
CAMERA*



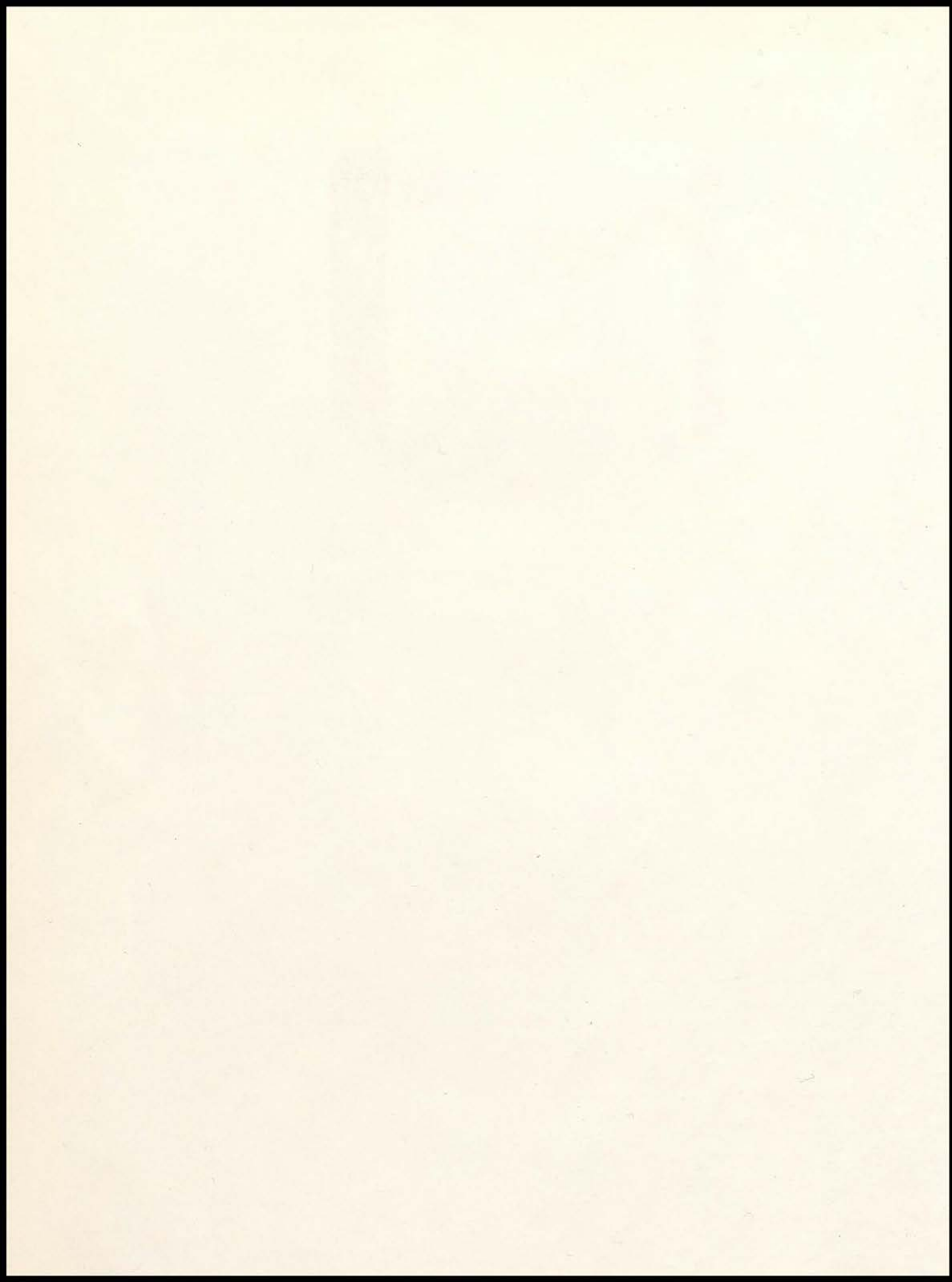
SAV-A-STOP INC.  
11118 E. 20TH ST.  
INDEPENDENCE, MO.

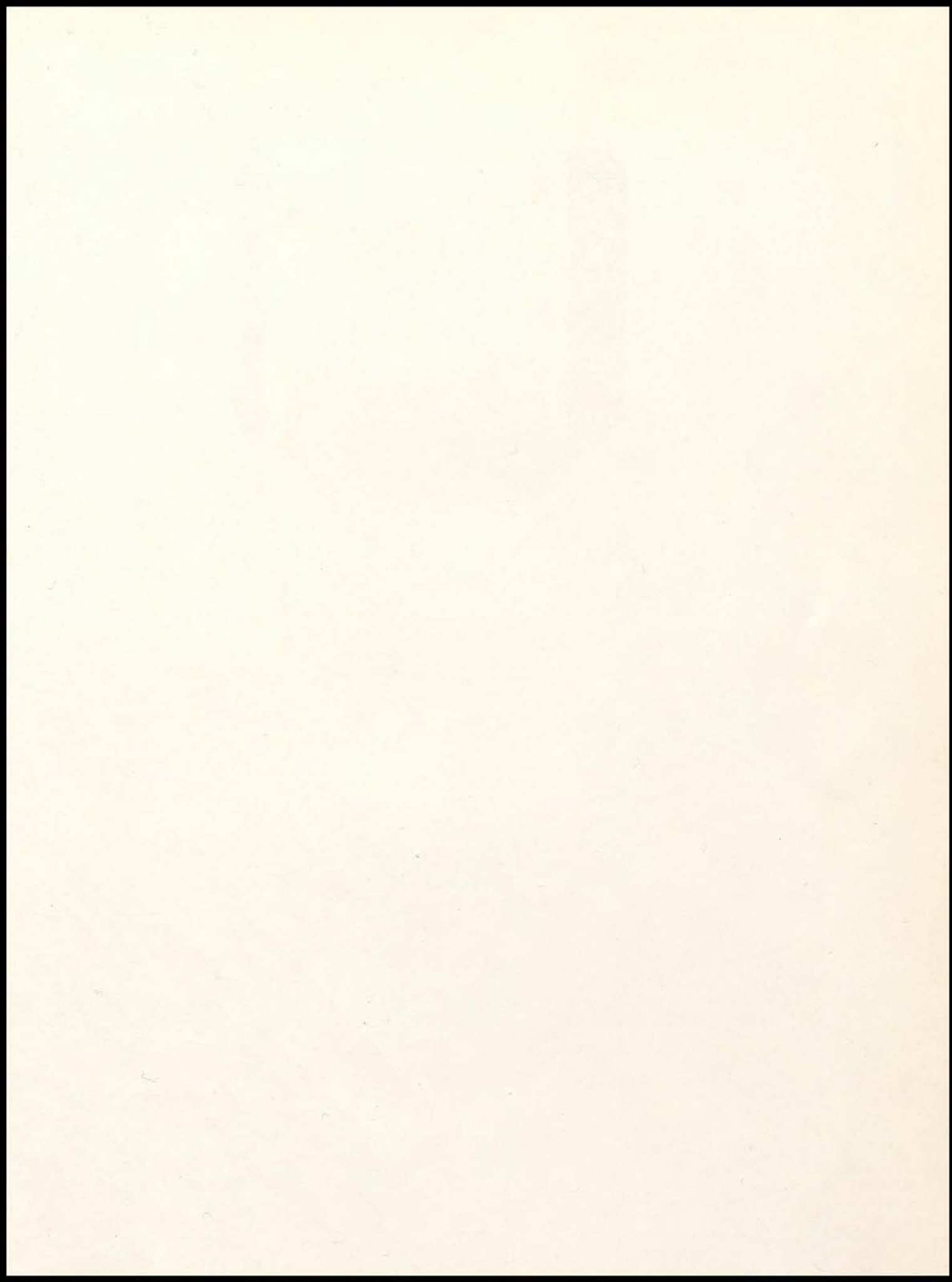
SKY LINE REALTY

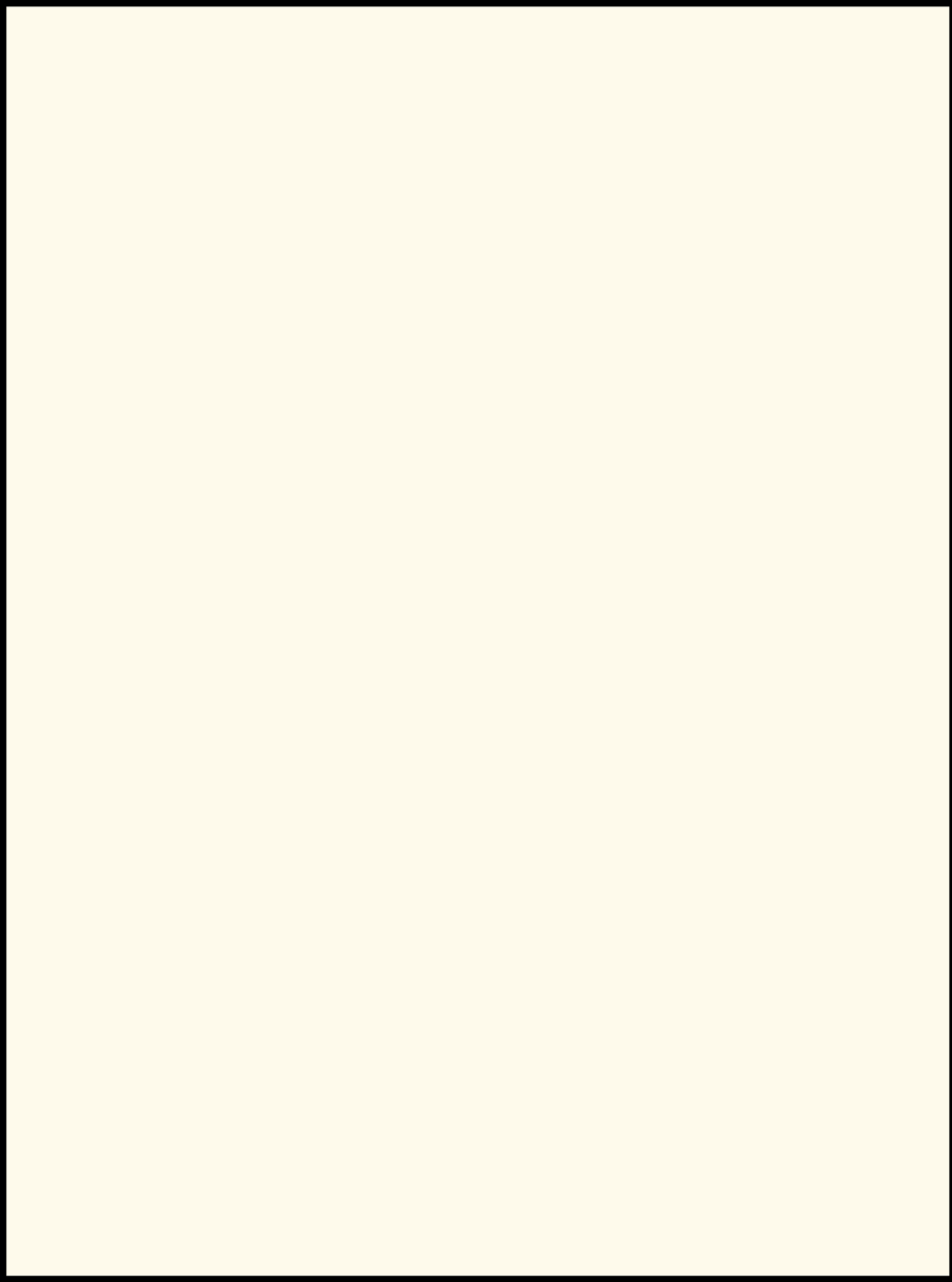
SELL-BUY-EXCHANGE

9845 SOUTH 71 HI-WAY  
SOUTH 1-3344





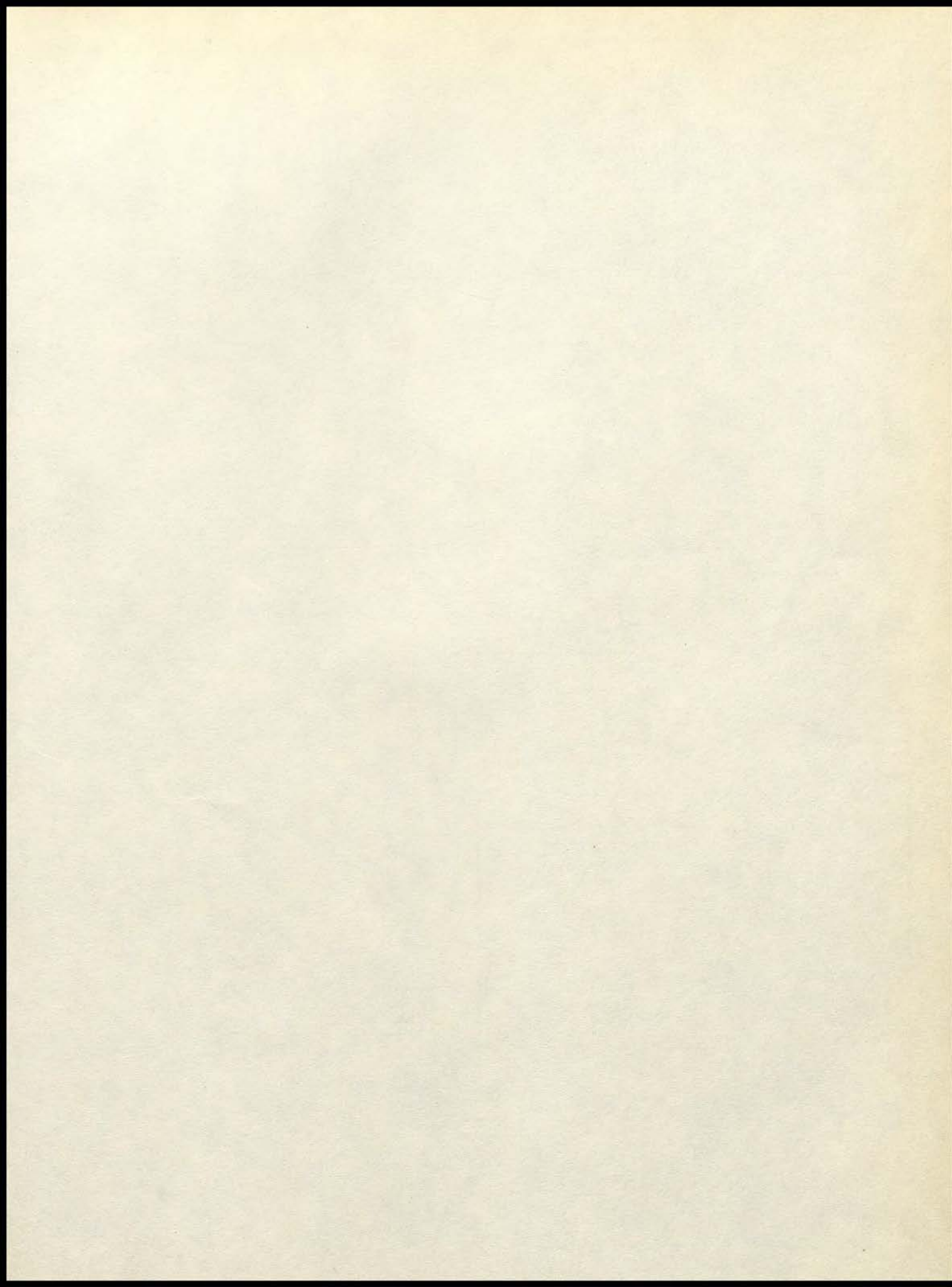






*Myers*  
YEARBOOKS  
*in depth*

PACEMAKERS  
OF QUALITY











*1961 VALEDICTORIAN*  
*and*  
*SALUTATORIAN*



"Now don't tell a soul, but----" Ann and Aunt Mattie, Julia and my gorgeous sister Rosalie go on and on and gossip.

*I'D RATHER  
BE  
YOUNG*



To marry or not to marry----that is the question.

*THE JUNIOR CLASS*





"Won't you marry my delightful father and make us all happy?"



"Pony boy, pony boy, won't you be my pony boy."

**FRANK FENNO ROBINSON**

406 WEST 34TH STREET V.F.W. BUILDING



"Well, I never!"



"You really are lovely."





STA'ers eagerly participate in the dashes.

*F  
I  
E  
L  
D*

*D  
A  
Y*



Barbara Merli was high point girl and Janet Orscheln a close second.



### PLAZA BOWL

HOME OF--'BOWLIN' WITH MOLEN' AND 'JUNIOR BOWLING CHAMPS'

F  
A  
S  
H  
I  
O  
N



Sophisticated Seniors appear in fashion show.

S  
H  
O  
W



They're as sweet as they look.



MALLIARD'S OF PRAIRIE VILLAGE, NO 19 ON  
THE MALL, EN-2-7747



# A WONDERFUL



MERCANTILE BANK AND TRUST COMPANY  
1119 WALNUT KANSAS CITY, MISSOURI



# WONDERFUL NIGHT



*Junior Class of St. Teresa Academy  
requests the honor of your presence*

*at the*

*Junior, Senior Prom*

*Friday, May 5, 1961*

*Grand Ball Room, Hotel Muehlebach*

*Music by Celester White*



BEARING DISTRIBUTORS INC.  
1919 BALTIMORE GR 1-0666



*QUEEN JANET CROWNS QUEEN MARY  
AT THE ANNUAL MAY CROWNING*

CHEMICAL SEALING CORP  
5401 BANKS AVENUE WA 3-8812





The Junior Class President, Judy Schloegel welcomes the audience to Ring Day.



Reverend Harry Berendzen blesses and distributes the class rings.

ST. TERESA'S ACADEMY

STARING CEREMONY

MAY 17, 1961

The program was concluded by selections given by the Junior Chorus.



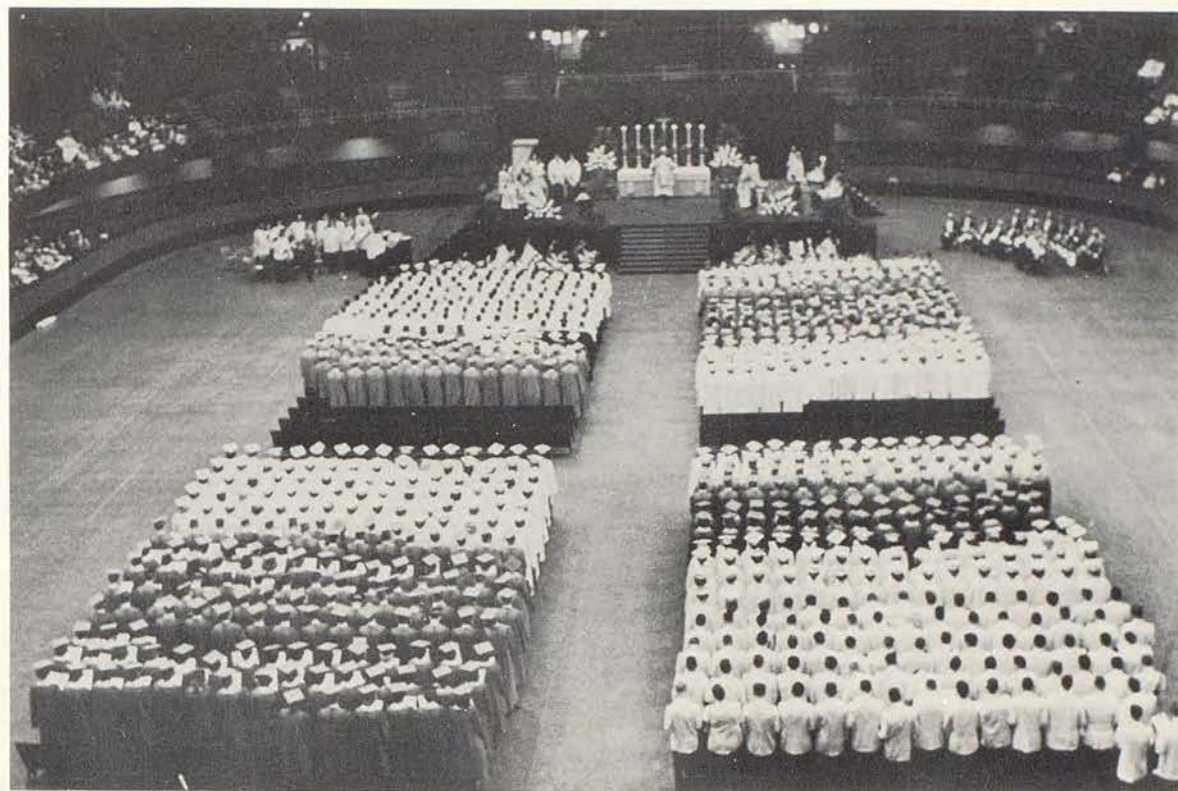


# *BACCALAUREATE*

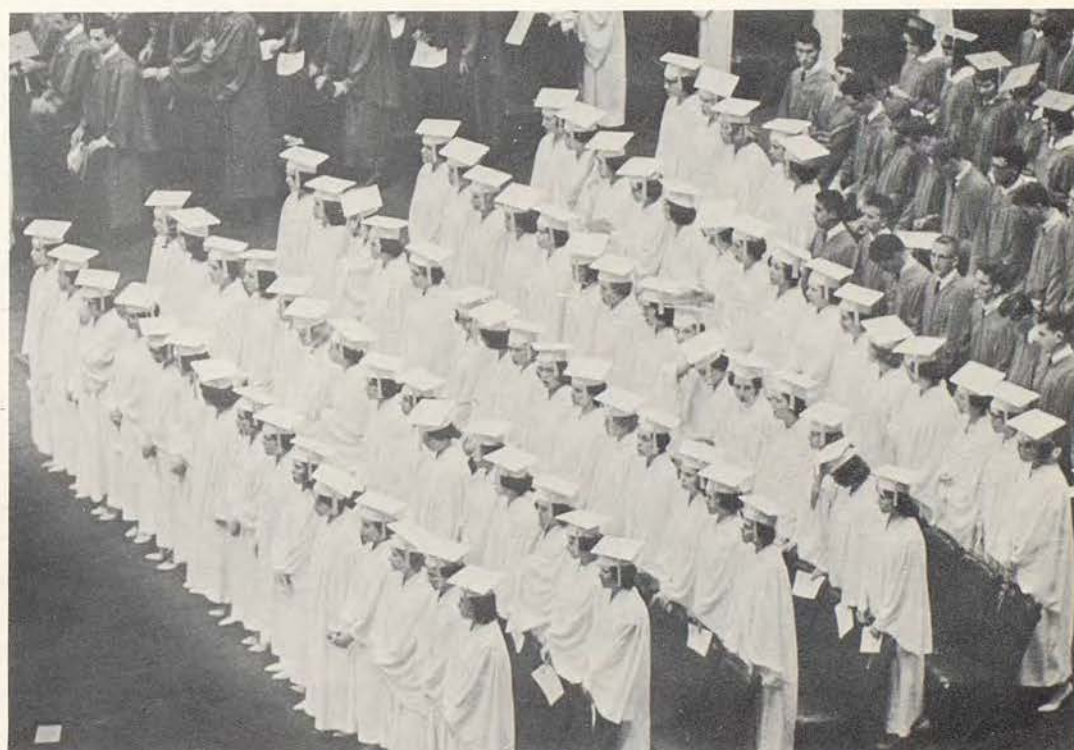


The annual Baccalaureate Day for all graduates of Catholic high schools in the diocese was held May 28 at the Municipal Auditorium.

# DAY



A solemn high Mass was celebrated by Bishop John P. Cody with the graduates and their friends in attendance.



Saint Teresa's graduates constituted eighty-one of the more than 850 Catholic high school graduates of 1961.





Excited daughters along with proud mothers take time out from the busy schedule of graduation week to thank God for His many, many blessings. For most seniors it was the last time that they would ever attend Mass in the Academy auditorium.

Following the Mass the seniors and their mothers were guests at a breakfast hosted by the faculty and served by the up-and-coming new seniors.



TASTEMARK, MILK-BUTTER-ICE CREAM  
3110 GILLHAM ROAD VA 1-3880





Janet Allen received a scholarship to the College of Saint Teresa in a competitive exam.



Elena O'Shea received a drama scholarship to the College of Saint Teresa.



Joanne Woster received a music scholarship to the College of Saint Teresa.



Mary Margaret Moran received a scholarship to Fontbonne College.



Janet Orscheln received an honor scholarship to the College of Saint Teresa.



Sandra Klug received a scholarship to the University of Kansas City.



The class of 1961 bids a fond farewell to its classmates at the annual Class Day exercises.

STRAUSS, FUCHS, OPPENHEIMER, INC.  
105 GRAND AVENUE KANSAS CITY, MISSOURI



St. Joseph blesses Seniors as they embark on new career.

Are they sad or are they glad?







Monsignor McDonald and Father Nadeau presented diplomas to eighty-one proud Seniors.



The Seniors can't believe that their high school days at STA are over.

ROELAND TEXACO SERVICE  
51ST AND ROE BLVD. MISSION, KANSAS





Father Berenzen watches as Julie O'Connor casts her vote in the student council election.



The new officers are: Susan Eagan, treasurer; Judy Schloegal, president; Mary Keleher, vice-president; Valerie Shaw, secretary.





*NOW*



