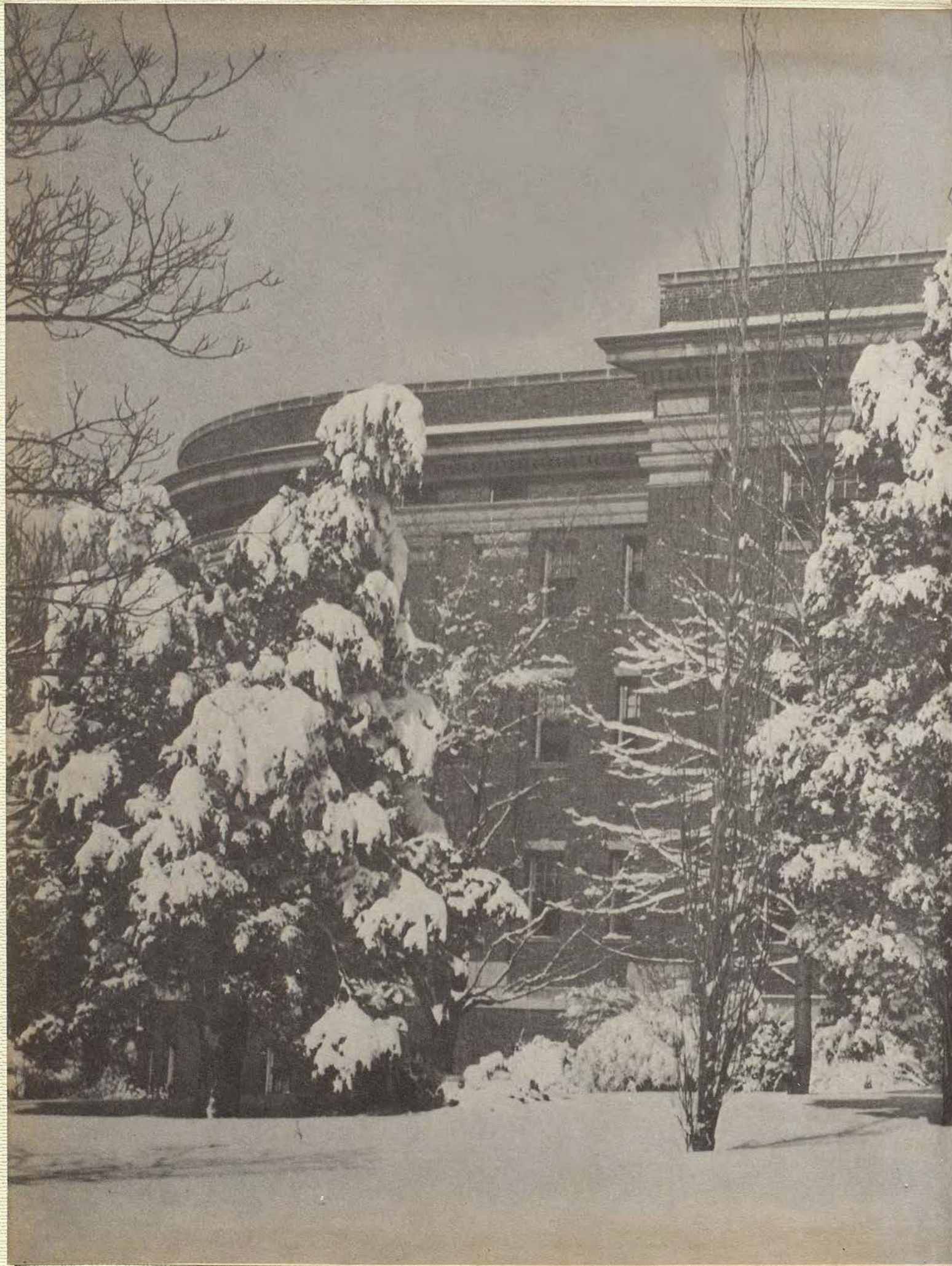
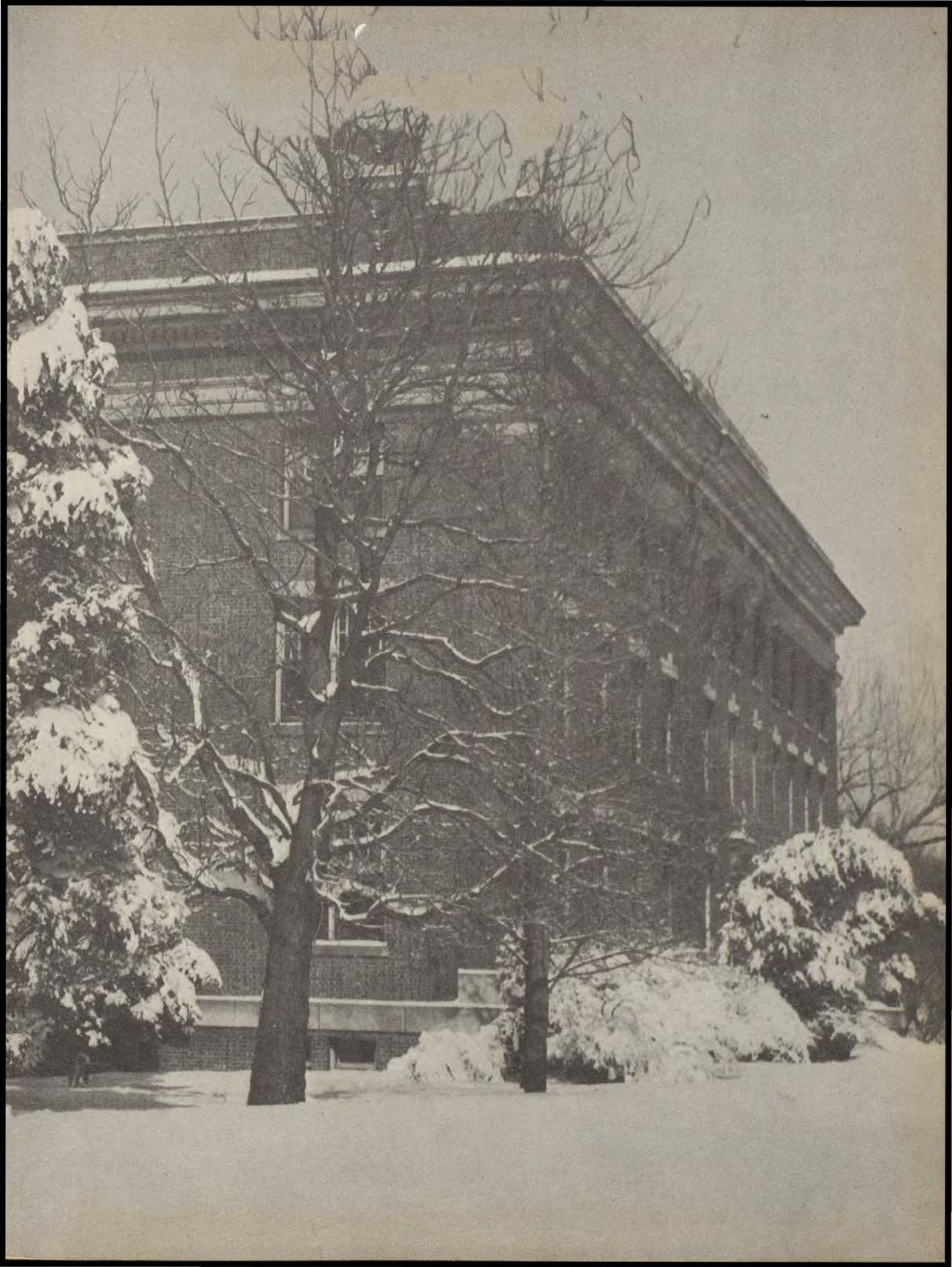
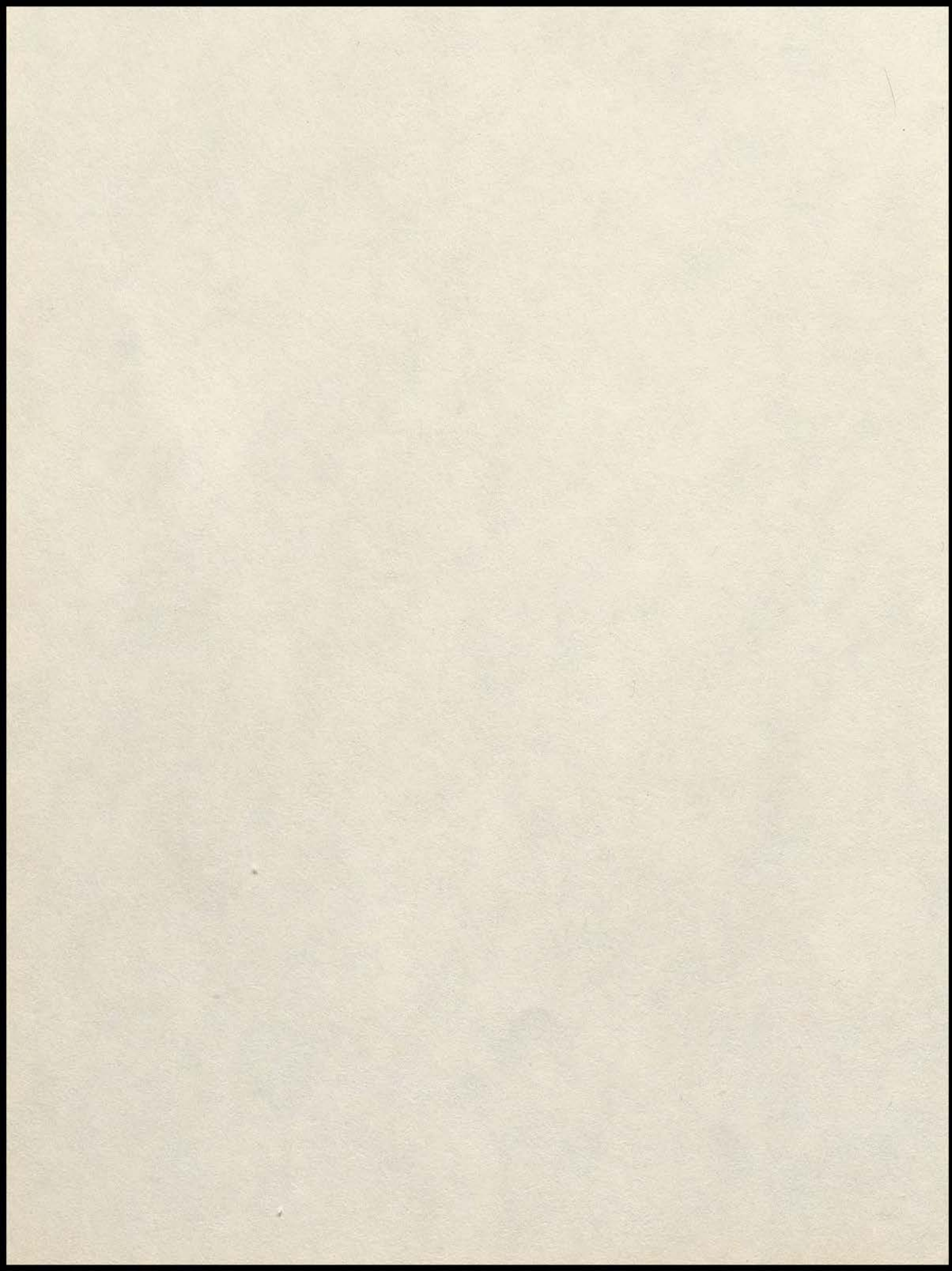


60

WILIA







THE AVILA

Presented by
The Senior Class of 1960
ST. TERESA'S ACADEMY
Kansas City, Missouri

TRIBUTE

Father Nadeau, the Avila Staff salutes and thanks you for your guidance during our four years here at St. Teresa's. You have aided us spiritually by your advice and prayers. You have been here, whenever we needed help, with corrections and ready assistance.

This is the way we have chosen to show you our appreciation in behalf of the Senior Class of 1960. You will remain in our treasured memories of S.T.A. and always in our prayers.





DEDICATION

We, the AVILA Staff, proudly dedicate the AVILA of 1960 to you, Sister Tarcisia. We would like to thank you for helping us mold our characters into those of young adult women. With your forward-looking ideals you have prepared us to cope with the situations of our future lives. We wish you luck in your new leadership here at St. Teresa's. May God bless you and help you in every order and rule you issue.



Compliments of
MUSIC SERVICE COMPANY
2905 Southwest Blvd.



TABLE OF CONTENTS

Graduates

Underclassmen

Scholastic Life

Social Life

Extracurriculars

Compliments of
THRIFTWAY FOOD MARTS
Roeland Park, Overland Park
Raytown, Antioch Shopping Center



LEFT TO RIGHT: Father Joseph Nadeau, Father Thomas Leavey, and Father Richard Lord. ABSENT: Father Jasper De Maria.



LEFT TO RIGHT: Sister Helen Marie, Sister Marie Loyola, Sister Mary Damien, Sister Mary Tarcisia, Sister Joseph Marie, Sister Vita Marie, Sister Agnes Bernard, Sister Mary Judith. ABSENT: Sister Marie de Lourdes, Sister St. Patrick, Sister Mary Elizabeth, and Sister M. Alphonsa.



LEFT TO RIGHT: Mrs. Anderson, Miss Christensen, Miss Kelly, Miss Reardon, and Mrs. Sullivan. ABSENT: Mrs. Berkey and Mrs. Hillard.

FACULTY

Compliments of
HARDWICK EXCAVATION COMPANY
 11128 South 71 Hi-way

The image features a minimalist, abstract graphic design on a light cream background. A large, dark grey, stylized letter 'N' is the central focus, composed of a vertical bar on the right and a diagonal bar on the left. To the right of the 'N' is a vertical grey bar with rounded ends. The word 'GRADUATES' is printed vertically in a bold, black, serif font within this bar. At the bottom, a horizontal black bar spans across the page, with a vertical black bar extending downwards from its center to a rounded black horizontal bar.

GRADUATES

President



GLEND A LEE

Scholarship 1, 2, 3, 4; Class President 4; Sodality 1; Apostleship of Prayer 2, 3, 4; Promoter 4; Student Council 4; Glee Club 3, 4; Ensemble 1, 2, 3, 4; N.C.M.E.A. 4; Library Club 4; Math Club 3, 4; Speech Club 4; C.S.M.C. 1, 2, 3, 4.

Vice-President



SUZANNE WILSON

Transfer from Loretto Academy 3; Class Vice-President 4; Apostleship of Prayer 4; Promoter 4; Glee Club 3, 4; Ensemble 3, 4; N.C.M.E.A. 4; Math Club 4; Athletic Club 4; French Club 4; Speech Club 4; Assistant Librarian 4; C.S.M.C. 3, 4.

Compliments of
A FRIEND

**O
F
F
I
C
E
R
S**

Secretary

MARY GRAHAM

Class Secretary 4; Sodality 1; Apostleship of Prayer 2, 3, 4; Promoter 4; Glee Club 4; Ensemble 1; Classical Club 3, 4; Library Club 4; C. S. M. C. 1, 2, 3, 4; Music Librarian 2.



Treasurer



PATRICIA LOFTUS

Class Treasurer 4; Sodality 1; Apostleship of Prayer 2, 3, 4; Promoter 4; Glee Club 2, 3; Ensemble 1, 2, 3; Classical Club 3; Speech Club 4; French Club 4, Treasurer 4; C. S. M. C. 1, 2, 3, 4; C. Y. C. Speech Meet 4.

Compliments of
WARD MARKETING COMPANY
1810 Baltimore



MARY KAY ABOUD

Transfer from Loretto Academy 3;
Sodality 4; Classical Club 3, 4; Li-
brary Club 4; Math Club, Secretary
3; C. S. M. C. 3, 4; DART Staff.



HESTER ADAMS

Sodality 1, 2, 3, 4; S. S. C. A.
3; Art Club 3; French Club 4;
Math Club 3; Speech Club 4;
C. S. M. C. 1, 2, 3, 4; DART
Staff 4; Press Convention 4.

HELEN ALDER

Transfer from Richmond High
School, Richmond, Missouri 2; So-
dality 2; Apostleship of Prayer 3, 4;
Student Council Representative 4;
Math Club 3; C. S. M. C. 2, 3, 4;
Speech Club 4; AVILA STAFF 4.



Compliments of
THOMAS FINN AND ASSOCIATES

REGINA BARTMAN

Sodality 1, 2, 3, 4; S. S. C. A. 4; Glee Club 3, 4; Ensemble 4; Library Club 4, Assistant Librarian 4; French Club 4; Press Convention 4; C. S. M. C. 1, 2, 3, 4, Representative 4; N. C. M. E. A. 4; Speech Club 4; AVILA Staff 4.



KATHY BAUERS

Sodality 1, 2, 3, 4; S. S. C. A. 4; Student Council 3, 4, Secretary 4; May Court 2; Business Club 4; C. S. M. C. 1, 2, 3, 4; Speech Club 4.



MARY MICHELLE BIEN

Sodality 1, 2, 3, 4; S. S. C. A. 4; Glee Club 3; Classical Club 3, 4; Business Club 4; Library Club 4; C. S. M. C. 1, 2, 3, 4, Representative 4; DART Staff 4.

Compliments of
LUCAS, EISEN AND
WAECKERLE, INC.



BETTY JO BOYD

Scholarship 1, 2; Sodality 1; Apostleship of Prayer 2, 3, 4; Promoter 4; May Court 1; Art Club 4; Business Club 4; Library Club 4; Math Club 3; C.S.M.C. 1, 2, 3, 4.



BARBARA BRAUN

Sodality 1, 2; Apostleship of Prayer 3; Glee Club 3; Business Club 4; Library Club 4; Speech Club 4; C.S.M.C. 1, 2, 3, 4; DART Staff 4.

MARIA BOYD BROWN

Transfer from St. Joseph's Academy, St. Louis, Missouri 2; Apostleship of Prayer 4; Promoter 4; Glee Club 2, 3, 4; Ensemble 2, 3, 4; N.C. M.E.A. 4; French Club 4; C.S. M.C. 2, 3, 4; DART Staff 4.



Compliments of
PORTRAIT COPY COMPANY
"Copy your Original Photo for
Application - Exchange - Passport"
4204 Troost Kansas City, Missouri

CYNTHIA BYRNE

Sodality 1,2,3,4; Glee Club 4;
Speech Club 4; Business Club,
Vice-President 4; C.S.M.C. 1,2,
3,4; AVILA Staff 4; Press Conven-
tion 4.



MARY ANN CARTER

Sodality 1, 2, 3, 4;
S. S. C. A. 3; Glee
Club 3; Library Club
4; Speech Club 4;
French Club 4; Assist-
ant Librarian 4; C.S.
M.C. 1, 2, 3, 4; Music
Librarian 3; DART
Staff 4; Press Conven-
tion 4.



MARY AGNES CASTROP

Class Treasurer 2; Sodality 1, 2, 3,
4; Glee Club 2, 3, 4; Ensemble 1, 2,
3; Classical Club 3, 4; Speech Club
4; Library Club 4; C. S. M. C. 1, 2,
3, 4; DART Staff 4.

Compliments of
READY MIXED CONCRETE AND
CENTROPOLIS CRUSHER COMPANY
908 West 25th Street



GAIL CHILDRESS

Sodality 1, 2; Apostleship of Prayer 3, 4; Promoter 4; Athletic Club 1, 2, 3, 4; Art Club 3, 4; Speech Club 4; Library Club 4; C.S.M.C. 1, 2, 3, 4; DART Staff 4.



SUE ANN COUMBE

Transfer from Indian Hills Jr. High 2; Apostleship of Prayer 4; Promoter 4; Librarian 4; French Club 4; Speech Club 4; C.S.M.C. 2, 3, 4; C.Y.C. Speech Meet 4; AVILA Attendant 3; AVILA Staff 4; Press Convention 4.

JEANNE DEHNER

Class Secretary 3; Sodality 1, 3, 4; S.S.C.A. 3; Apostleship of Prayer 2; Student Council 4; Library Club 4; French Club 4; Math Club 3, 4; Speech Club 4; C.S.M.C. 1, 2, 3, 4; Prom Attendant 3; Rockhurst Homecoming Attendant 4; AVILA Staff 4, Co-Editor 4; Press Convention 4.



Compliments of
J. C. NICHOLS COMPANY
310 Ward Parkway

JOANNE DEHNER

Sodality 1, 3, 4; S.S.C.A. 3; Apostleship of Prayer 2; Glee Club 4; Athletic Club 3, 4; Library Club 4; French Club 4; Math Club 3; Speech Club 4; C.S.M.C. 1, 2, 3, 4; Music Librarian 4; Rockhurst Homecoming Attendant 3; AVILA Staff 4; Press Convention 4.



JULIA MARIE
DI GIOVANNA

Class Secretary 2; Sodality 1; Apostleship of Prayer 2, 3, 4; Promoter 4; Student Council 4; Glee Club 2, 3, 4; Ensemble 1, 2, 3, 4; N.C.M.E.A. 4; Athletic Club 4; Classical Club 3; Business Club 4; C.S.M.C. 1, 2, 3, 4; AVILA Staff 4, Co-Editor 4.



PAT DUNPHY

Sodality 1; Apostleship of Prayer 2, 3, 4; Promoter 4; Student Council 4; Athletic Club 1, 2, 3, 4; Library Club 4; Speech Club 4; C.S.M.C. 1, 2, 3, 4, Secretary 3, President 4; Prom Attendant 3.

Compliments of
TRI-CITY CONSTRUCTION COMPANY
3001 East 83rd Street



ANTOINETTE JOAN ENNA
Sodality 1, 2, 3, 4; Glee Club 3, 4;
Ensemble 1, 2, 4; Art Club 2; Li-
brary Club 4; Speech Club 4; Assist-
ant Librarian 4; Math Club 3;
C.S.M.C. 1, 2, 3, 4; DART Staff 4.



BEVERLY ENNA
Class President 3; Sodality 1,
2, 3, 4, Unit Leader 3, 4; May
Court 4; S.S.C.A. 4; Student
Council 1, 3, Representative 1;
Athletic Club 2, 3, 4; Art Club
2; Library Club 4; Math Club
3; Speech Club 4; C.S.M.C.
1, 2, 3, 4; AVILA Staff 4.

SANDY EVERETT
Scholarship 1, 2, 3, 4; Sodality 1, 2,
3, 4; S.S.C.A. 3; Athletic Club 4;
Classical Club 3; Business Club 4;
Library Club 4; Assistant Librarian
4; Music Librarian 1; C.S.M.C. 1,
2, 3, 4; AVILA Staff 4.



Compliments of
FRANK FLINN CONSTRUCTION CO.
2809 East 85th Street
JA 3-4004

CARMEN FIORELLA

Sodality 1, 2, 3, 4; Apostleship of Prayer 4; Promoter 4; Glee Club 4; Business Club 4; Math Club 3; Speech Club 4; C.S.M.C. 1, 2, 3, 4.



HELEN FLEMINGTON

Sodality 1, 2, 3, 4; S.S.C.A. 3; Glee Club 2, 3, 4, President 4; Student Council 4; Ensemble 1, 2, 3, 4; N.C.M.E.A. 4; Library Club 4; French Club 4; Math Club 3; C.S.M.C. 1, 2, 3, 4; Speech Club 4; AVILA Staff 4.



MARGARET ANN FRICK

Transfer from Bishop Hogan High School 3; Apostleship of Prayer 4; Promoter 4; Art Club 4; Library Club 4; Assistant Librarian 4; French Club 4; Speech Club 4; C.S.M.C. 3, 4.

Compliments of
PIERSOL O'BRIEN AND ADAMS, INC.
1012 Baltimore



ROSEANN GARGOTTA

Sodality 1; Apostleship of Prayer 2, 3, 4; Promoter 4; Glee Club 2, 3, 4; Ensemble 1, 2, 3, 4; N.C.M.E.A. 3, 4; Library Club 4; Speech Club 4; C.Y.C. Speech Meet 4; AVILA Staff 4; Press Convention 4.



PATRICIA GERAGHTY

Sodality 1, 2, 3, 4; S.S.C.A. 3; Art Club 2; French Club 4; Math Club 3; Speech Club 4; Art Contest 2; C.Y.C. Speech Meet 4; C.S.M.C. 1, 2, 3, 4; DART Staff 4.

BARBARA GRAMLICH
Class Treasurer 3; Sodality 1, 2, 4, Unit Leader 4; Student Council 2, 4, Representative 2; Athletic Club 1, 2, 3, 4, President 4; Library Club 4; Speech Club 4; Catholic Community Library Representative 4; French Club 4; C.S.M.C. 1, 2, 3, 4.



Compliments of
LUCE THOMPSON AND CROWE, INC.
105 West 11th Street

JESDON HAAKE

Class Vice-President 1; Sodality 1, 3, 4, Prefect 4; S.S.C.A. 3; Apostleship of Prayer 2; Student Council 4; Glee Club 2, 3, 4; Ensemble 1, 2, 3, 4; May Court 3; Athletic Club 2, 3, 4; Speech Club 3, 4; Classical Club 3, 4, Treasurer 3; C.S.M.C. 1, 2, 3, 4.



KATHLEEN HALCRO
Scholarship 1, 2, 3, 4;
Sodality 1, 2, 3, 4, Unit
Leader 3; Student
Council 3; Athletic
Club 4; Classical Club
3, 4, Vice-President 3;
Library Club 4; Math
Club 3, 4, President 4;
C.S.M.C. 1, 2, 3, 4;
DART Staff 4; Press
Convention 4; Co-Ed-
itor 4.



JANE HARRIS

Sodality 1; Apostleship of Prayer 2, 3, 4; Promoter 4; Glee Club 2, 3, 4; Ensemble 1, 2, 3, 4; N.C.M.E.A. 3, 4; Art Club 3; Library Club 4; Math Club 3, 4; Speech Club 4; Art Contest 3; C.S.M.C. 1, 2, 3, 4.

Compliments of
A FRIEND

Compliments of
ST. TERESA'S ALUMNAE
ASSOCIATION



MARY HELEN HENDON

Sodality 1; Apostleship of Prayer 2, 3, 4; Student Council 3; Athletic Club 4; Art Club 3, 4, President 3; Art Contest 3; Library Club 4; Speech Club 4; C.Y.C. Speech Meet 4; C.S.M.C. 1, 2, 3, 4; Music Librarian 2; AVILA Staff 4; Press Convention 4.



LESLIE HORN

Sodality 1, 2, 3, 4, Treasurer 3, Unit Leader 3, 4; May Court 3, 4; S.S.C.A. 4; Glee Club 3; Classical Club 3, 4; Speech Club 4; Library Club 4; Math Club 3, 4; C.S.M.C. 1, 2, 3, 4; DART Staff 4.

CARROLL HOSKINS

Sodality 1, 2, 3, 4, Unit Leader 3; S.S.C.A. 4; Athletic Club 1, 2, 3, 4, Secretary 3, Vice-President 4; Art Club 4; Speech Club 4; Library Club 4; Catholic Community Library Representative 3; C.S.M.C. 1, 2, 3, 4.



Compliments of
ANHEUSER-BUSCH, INC.
100 East 20th Street

Compliments of
CARTER-WATERS
CORP.
2440 West
Pennway

MARY ANN HOWARD

Class Treasurer 1; Sodality 1; Apostleship of Prayer 2, 3, 4; Promoter 4; Glee Club 3; Athletic Club 1, 2, 3, 4; Library Club 4; Math Club 3; C.S.M.C. 1, 2, 3, 4.



LINDSAY HUGHES

Sodality 1; Apostleship of Prayer 2, 3, 4; Promoter 4; C.S.M.C. 1, 2, 3, 4, Vice-President 4, Representative 2; French Club, President 4; Speech Club 4; Math Club, President 3.



CHARLOTTE HUNTER

Transfer Nazareth Academy, Concordia, Kansas 4; Glee Club 4; Ensemble 4; N.C.M.E.A. 4; C.Y.C. Speech Meet 4; Speech Club, Vice-President 4; DART Staff 4; Press Convention 4.



Compliments of
FUNKHOUSER
MACHINERY CO.
2425 Jefferson

Compliments of
MAJESTIC STEAK HOUSE
"Famous for Choice Steaks"
700 East 31st VA 1-9208



JANIE KELLER

Sodality 1, 2, 3; S. S. C. A. 3; Glee Club 3, 4; Ensemble 4; N. C. M. E. A. 4; Athletic Club 1, 2, 3, 4; Art Club 2; Math Club 3; Speech Club 4; Library Club 4; Assistant Librarian 4; C. S. M. C. 1, 2, 3, 4; Music Librarian 3, 4; DART Staff 4.



CONNI KISSICK

Sodality 1, 2, 3; S. S. C. A. 3; Apostleship of Prayer 4; Promoter 4; Glee Club 3, 4; Ensemble 1, 2; Library Club 4; Speech Club 4; C. Y. C. Speech Meet 4; C. S. M. C. 1, 2, 3, 4, Treasurer 3; AVILA Staff 4.

PEGGY KLEIN

Scholarship 1, 2, 3, 4; Class Vice-President 2; Sodality 1; Apostleship of Prayer 2, 3, 4; Promoter 4; S. S. C. A. 3; Glee Club 2, 3, 4; Ensemble 1, 2, 3, 4; N. C. M. E. A. 3, 4; Athletic Club 2, 3, 4; Library Club 4; Speech Club 4; French Club, Vice-President 4; Math Club 3; C. S. M. C. 1, 2, 3, 4; AVILA Staff 4; Press Convention 4.



Compliments of
KISSICK AND SON
CONSTRUCTION CO.
1107 South Highway

MARY LANCASTER
Sodality 1, 2, 3, 4; Library Club 4;
Math Club 3; C.S.M.C. 1, 2, 3, 4;
DART Staff 4.



MARY LEE
Sodality 1; Apostleship
of Prayer 2, 3, 4; Stu-
dent Council President
4; Representative 2;
Glee Club 3, 4; Athletic
Club 1, 2, 3, 4; Business
Club 4; C.S.M.C. 1,
2, 3, 4; Speech Club 4;
DART Staff 4; Press
Convention 4.



MARION MANZELLO
Sodality 1, 2, 3, 4; S.S.C.A. 3;
Student Council Representative 4;
French Club 4; Math Club 3; Speech
Club 4; Library Club 4; C.S.M.C.
1, 2, 3, 4, Representative 2; AVILA
Attendant 1.



Compliments of
JACK BORING'S
4609 Troost

Compliments of
ORIGINAL TOY AND JOBBING CO.
303 West 9th Street



THERESA MANZELLA

Sodality 1,2; Glee Club 2,3,4,
Vice-President 4; Ensemble 1,2,3,
4; N.C.M.E.A. 3,4; C.S.M.C. 1,
2,3,4; Music Librarian 1,2;
N.C.M.E.A. Representative 3,4.



BARBARA MARSHALL

Sodality 1,2,3,4; S.S.C.A.
3; Athletic Club 1,2,3,4;
French Club 4; Math Club 3;
Speech Club 4; Library Club
4; C.S.M.C. 1,2,3,4.

SANDRA MAYER

Sodality 1; Apostleship of Prayer
2,3,4, President 4; Promoter 4;
Student Council 4; Glee Club 2,3,
4; Ensemble 1,2,3,4; N.C.M.E.A.
4; Athletic Club 1,2,3,4; French
Club 4; Math Club 3,4; Speech
Club 4; C.S.M.C. 1,2,3,4, Rep-
resentative 1.



Compliments of
MRS. JOHN MAYER, SR.
Chatham Hotel

Compliments of
PARAMOUNT
MUSIC COMPANY
1430 Main Street

MAUREEN MEINERS
Sodality 1, 2, 3; Apostleship of
Prayer 4; Promoter 4; Speech Club
4; C.S.M.C. 1, 2, 3, 4.



PATTY MILES
Sodality 1; Apostleship
of Prayer 2, 3, 4; Pro-
moter 4; Business Club
4; Math Club 3; C.S.
M.C. 1, 2, 3, 4.



JUDY MINIACE
Sodality 1, 2; Apostleship of Prayer
4; Promoter 4; Glee Club 3, 4; En-
semble 4; N.C.M.E.A. 4; French
Club 4; C.S.M.C. 1, 2, 3, 4.



Compliments of
LAWLESS AND
JOHNSON
Rug and Carpet
Cleaners
3722 East 18th
Street

Compliments of
JOHN F. CAMPION REALTY CO.
3611 Main Street
Kansas City, Missouri



MARY BETTY MOORE

Transfer from Indian Hills Junior High 2; Apostleship of Prayer 3, 4, Vice-President 4; Promoter 4; Speech Club 4; C. S. M. C. 2, 3, 4.



SHARON MORRISSEY

Transfer from Bishop Miege 4; Apostleship of Prayer 2; Art Club 2, President 2, Secretary and Treasurer 4; C. S. M. C. 1, 2, 4; DART Staff 4.

MARY EILEEN NAERT
Transfer from Redemptorist High 3; Library Club 4; Assistant Librarian 4; French Club 4; Speech Club 4, Secretary 4; C. S. M. C. 3, 4.



Compliments of
WHITE SALES COMPANY -
KAISER FOIL
228 West Fourth Street

Compliments of
DAN-DEE
DELIVERY AND
TRANSFER SERVICE
808 Washington

VIRGINIA NELSON

Sodality 1, 2, 3, 4, Unit Leader 3, 4;
Glee Club 2, 3, 4; Ensemble 1, 2, 3,
4; N.C.M.E.A. 4; May Court 4;
Catholic Community Library Rep-
resentative 3; Math Club 3, 4;
Speech Club 4; Classical Club 3, 4,
Secretary 4; C.S.M.C. 1, 2, 3, 4;
DART Staff 4; Press Convention 4.



COLLEEN NESTOR

Sodality 1, 2, 3, 4;
S. S. C. A. 3; Glee
Club 4; Business Club
4; Library Club 4;
Speech Club 4; C. Y. C.
Speech Meet 4; Math
Club 3; C. S. M. C. 1,
2, 3, 4; AVILA Staff 4;
Press Convention 4.



CAROL PALERMO

Sodality 1, 2, 3; A postleship of
Prayer 4; Promoter 4; Glee Club 3,
4; Ensemble 4; N.C.M.E.A. 4; Li-
brary Club 4; Assistant Librarian 4;
French Club 4; Speech Club 4;
C.S.M.C. 1, 2, 3, 4; AVILA Staff 4;
Press Convention 4.



Compliments of
ANDY KLEIN PONTIAC
78th and 69 Highway

Compliments of
S. PATTI CONSTRUCTION CO.
1340 Admiral Boulevard



BETSY ANN PARKS

Transfer from Shawnee Mission East 4; Library Club 4; Assistant Librarian 4; Math Club 4; Speech Club 4; C.Y.C. Speech Meet 4; C.S.M.C. 4; DART Staff 4.



LINDA PFEIFFER

Class Vice-President 3; Sodality 1; Apostleship of Prayer 2, 3, 4; Promoter 4; Glee Club 4; Classical Club 3, 4; Business Club 4, President 4; C.S.M.C. 1, 2, 3, 4.

MARY PINCETL
Sodality 1, 2, 3, 4; Glee Club 3;
French Club 4; Speech Club 4;
Math Club 3; C.S.M.C. 1, 2, 3, 4;
DART Staff 4; Press Convention 4.



Compliments of
HOME RUG CLEANING CO.
4728 Forest Avenue
VA 1-7900

Compliments of
AMERICAN
BEAUTY
MACARONI CO.
501 Funston Road
Kansas City,
Kansas

SUE QUIGLEY

Sodality 1; Apostleship of Prayer 2, 3, 4; Promoter 4; Glee Club 2, 3, 4; Ensemble 1, 3, 4; N.C.M.E.A. 4; Athletic Club 1, 2, 3, 4; Math Club 3, Secretary-Treasurer 3; Speech Club 4; C.S.M.C. 1, 2, 3, 4; DART Staff 4.



KAROLYN QUINLAN
Sodality 1; Apostleship of Prayer 2, 3, 4, Secretary 4; Glee Club 4; Speech Club 4; Business Club 4; Math Club 3; Library Club 4; C.S.M.C. 1, 2, 3, 4.



SHARON RHINEHART

Sodality 1, 2, 3; Apostleship of Prayer 4; Promoter 4; Glee Club 4; Speech Club 4, President 4; Math Club 3; C.Y.C. Speech Meet 4; C.S.M.C. 1, 2, 3, 4.



Compliments of
JOSEPH WARD
PAINTING CO.
3825 Woodland
WA 1-0511

Compliments of
KERSTING - GREER
MERCHANDISE BROKERS
406 West 34th Street
JE 1-0014



CAROLYN RUDER

Sodality 1, 2, 3; Apostleship of Prayer 4; Promoter 4; Glee Club 3; Classical Club 3, 4, President 4; C.S.M.C. 1, 2, 3, 4.



KATHY RYAN

Sodality 1; Apostleship of Prayer 2, 3, 4; Promoter 4; Business Club 4; Speech Club 4; Library Club 4; French Club 4; Music Librarian 3; C.S.M.C. 1, 2, 3, 4.

KATHLEEN SCHURIG

Sodality 1; Apostleship of Prayer 2, 3, 4, Treasurer 4; Classical Club 3, 4; Business Club 4; C.S.M.C. 1, 2, 3, 4.



Compliments of
KANSAS CITY BUSINESS COLLEGE
1330 Grand Avenue
VI 2-2374

Compliments of
BEARING
DISTRIBUTORS,
INC.
1919 Baltimore
GR 1-0666

LOUISE SERRONE

Sodality 1,2; Apostleship of Prayer 4; Promoter 4; Glee Club 2,3,4; Ensemble 1,2,3,4; N.C.M.E.A. 4; Classical Club 3,4; Math Club 3; Speech Club 4; C.Y.C. Speech Meet 4; C.S.M.S. 1,2,3,4; AVILA Staff 4.



SHARON SHOEMAKER

Transfer from Lillis High School 2; Sodality 2,3,4; French Club 4; C.S.M.C. 2,3,4; DART Staff 4; Press Convention 4.



CAROL STANLEY

Transfer from Redemptorist 2; Sodality 2,3; Apostleship of Prayer 4; Promoter 4; Glee Club 2,3,4; Ensemble 2,3,4; N.C.M.E.A. 2,3,4; Business Club 4; Library Club 4, Chairman 4, Library Assistant 4; Catholic Community Representative 4; C.S.M.C. 2,3,4.



Compliments of
MEYER
HAWTHORN-
MELODY FARMS
DAIRY
5th and Barnett
Kansas City,
Kansas

Compliments of
WAGNER FUNERAL HOME
Linwood Boulevard and
Wyandotte



GENIE SULLIVAN

Class President 1; Sodality 1, 2, Recording Secretary 3, Vice-Prefect 4, Unit Leader 3, 4; May Court 3, 4; Student Council 1, Vice-President 3; Athletic Club 1, 2, 3, 4; Art Club 4; Speech Club 4; Classical Club 3; Math Club 3; C.S.M.C. 1, 2, 3, 4; Glee Club 2, 3, 4; Ensemble 1, 2, 3, 4; N.C.M.E.A. Representative 3, Co-Chairman 4.



JO ANN THOMPSON

Class President 2; Sodality 1; Apostleship of Prayer 2, 3, 4; Promoter 4; Classical Club 3, 4; Speech Club 4; Math Club, Vice-President 3; C. Y. C. Speech Meet 4; C.S.M.C. 1, 2, 3, 4; DART Co-Editor 4.

MARY ELLEN THORNHILL

Sodality 1; Apostleship of Prayer 2, 3, 4; Promoter 4; Glee Club 3, 4; Music Librarian 3; French Club 4; Speech Club 4; C.S.M.C. 1, 2, 3, 4.



Compliments of
BLAKE SHEET METAL WORKS
4130 Penn
Kansas City 11, Missouri

Compliments of
MISSOURI
WHOLESALE
LIQUOR CO.
"Old 1889 Brand"
2727 Walnut

DIANE TIEHEN

Sodality 1, 2, 3, 4; May Court 2; Glee Club 3, 4; Ensemble 3, 4; N.C.M.E.A. 4; Athletic Club 4; Speech Club 4; C.S.M.C. 1, 2, 3, 4, Representative 3; Music Librarian 3; AVILA Staff 4.



ELAINE TODT

Student Council Representative 3; Glee Club 2, 3, 4; Ensemble 2, 3, 4; N.C.M.E.A. 4; Art Club 4, President 4; French Club 4; Speech Club 4; C.S.M.C. 1, 2, 3, 4; DART Staff 4.



MARY ANN TOBIN

Sodality 1; May Court 1; Apostleship of Prayer 2, 3, 4; Promoter 4; Glee Club 3, 4; Ensemble 3, 4; N.C.M.E.A. 4; Classical Club 3, 4; Speech Club 4; Math Club 3, 4; C.S.M.C. 1, 2, 3, 4.



Compliments of
FRED HARVEY
Union Station
Restaurants
Union Station
Kansas City

Compliments of
BOWEN CONSTRUCTION COMPANY
1201 Manchester
BE 1-8770



CAROLE WELSH

Sodality 1, 2; Apostleship of Prayer Promoter 4; Glee Club 2, 3, 4; Ensemble 2, 4; Business Club 4; C.S.M.C. 1, 2, 3, 4; N.C.M.E.A. 4; Speech Club 4, Secretary 4; Library Club 4.



KAREN WHALEN

Transferred from St. Mary's Academy, Denver, Colorado 3; Apostleship of Prayer Promoter 4; DART Staff 4; Glee Club 4; French Club 4; Press Convention 4; C.S.M.C. 3, 4.

FRANIE WHITAKER
Student Council Representative 1;
Art Club Sergeant-at-Arms 3,
President 4; Art Contest 3; Athletic
Club 4; C.S.M.C. 1, 2, 3, 4, Rep-
resentative 4; Speech Club 4.



Compliments of
IOWA FARM SAUSAGE COMPANY
6904 Prospect

Compliments of
JERRY'S CONOCO
8909 Wornall

PAM WOODS

Sodality 1; Apostleship of Prayer 2,3,4; Promoter 4; Glee Club 4; Ensemble 4; Library Club 4; French Club 4; Math Club 3,4, Vice-President 4; C.S.M.C. 1,2,3,4; N.C.M.E.A. 4.



CAROLE ZAMMAR

Sodality 1; Apostleship of Prayer 2,3,4; Promoter 4; Speech Club 4; Art Club 2,4; Art Contest 4; C.Y.C. Speech Meet 4; C.S.M.C. 1,2,3,4; Music Librarian 3.



Compliments of
MOTEL MANAGERS'
TRAINING SCHOOL
612 South Serrano Avenue
Los Angeles, California

Compliments of
LINDE COMPANY DIVISION OF
UNION CARBIDE CORPORATION
910 Baltimore Avenue

Senior Directory



Mary Kay Abboud Hester Adams Helen Alder Regina Bartman Kathy Bauers Mary Michelle Bien Betty Boyd



Barbara Braun Maria Brown Cynthia Byrne Mary Ann Carter Mary Agnes Castrop Gail Childress Sue Ann Coumbe



Jeanne Dehner Joanne Dehner Julie DiGiovanna Pat Dunphy Antoinette Enna Beverly Enna Sandra Everett



Carmen Fiorella Helen Flemington Margaret Ann Frick Roseann Gargotta Patricia Geraghty Mary Graham Barbara Gramlich



Jesdon Haake Kathleen Halcro Jane Harris Mary Helen Hendon Leslie Horn Carroll Hoskins Mary Ann Howard



Lindsay Hughes Charlotte Hunter Jane Keller Connie Kissick Peggy Klein Mary Lancaster Glenda Lee

NAME	ADDRESS	TELEPHONE	NOTED FOR
MARY KAY ABOUD	5925 Wyandotte	Ja 3-2744	Enthusiasm
HESTER ADAMS	6107 Walnut	De 3-0970	Tardy slips
HELEN ALDER	Route #4 Richmond, Missouri	450	Popularity as Hall Monitor
REGINA BARTMAN	5020 Virginia	De 3-2835	Liveliness
KATHY BAUERS	115 West 67 Terrace	De 3-7939	High Hopes
MARY MICHELLE BIEN	1105 West 77 Terrace	Ja 3-9142	"Oh, you guys"
BETTY BOYD	2835 Benton	Wa 3-3239	Agreeableness
BARBARA BRAUN	5741 Rockhill	Ja 3-4445	Complexion
MARIA BROWN	6201 W. 75 Prairie Villiage	Ni 3-2014	Laugh
CYNTHIA BYRNE	4940 Forest	Ja 3-6762	Excitableness
MARY ANN CARTER	8015 Kenwood	Hi 4-7838	Imagination

Class of 1960



Mary Lee Pat Loftus Marion Manzello Theresa Manzello Barbara Marshall Maureen Meiners Sandra Mayer



Judy Miniace Patty Miles Sharon Morrissey Mary Betty Moore Mary Eileen Naert Virginia Nelson Colleen Nestor



Carol Palermo Betsy Parks Linda Pfeiffer Mary Pincetl Susie Quigley Karolyn Quinlan Sharon Rhinehart



Carolyn Ruder Kathy Ryan Kathleen Schurig Louise Serrone Sharon Shoemaker Carol Stanley Genie Sullivan



JoAnn Thompson Mary Ellen Thornhill Diane Tiehen Elaine Todt Mary Anne Tobin Carole Welsh Karen Whalen



Frannie Whitaker Suzanne Wilson Pam Woods Carole Zammar

NAME
 MARY AGNES CASTROP
 GAIL CHILDRESS
 SUE ANN COUMBE
 JEANNE DEHNER
 JOANNE DEHNER
 JULIE DIGIOVANNA
 PAT DUMPHY
 ANTOINETTE ENNA
 BEVERLY ENNA
 SANDRA EVERETT
 CARMEN FIORELLA

ADDRESS
 11410 Spruce
 708 E. Meyer
 3508 W. 71st St.
 7100 Alhambra
 7100 Alhambra
 1821 Maddi
 21 E. 52nd St.
 5638 Rockhill Rd.
 4637 Charlotte
 5314 Chadwick
 5628 Blue Ridge

TELEPHONE
 So 1-2451
 De 3-6528
 Em 2-5891
 En 2-0431
 En 2-0431
 Em 1-0006
 De 3-7175
 Em 1-0055
 Je 1-3966
 Sk 1-3349
 Fl 3-3592

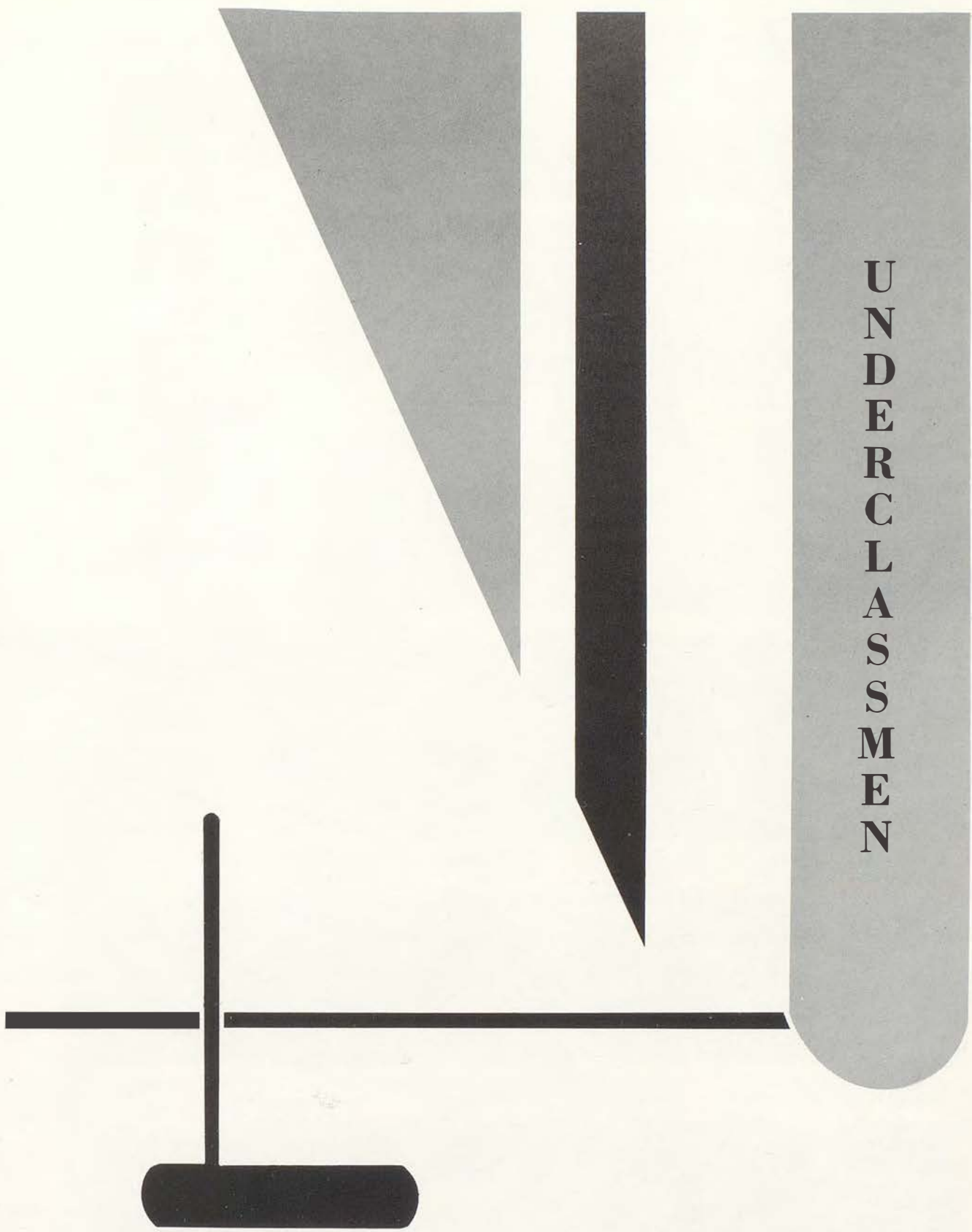
NOTED FOR
 Smile
 Mischievousness
 Duck Tail
 Amiability
 Dennis the Menace
 Activities
 Pep
 Dee Dee
 Femininity
 Athletic ability
 Silence

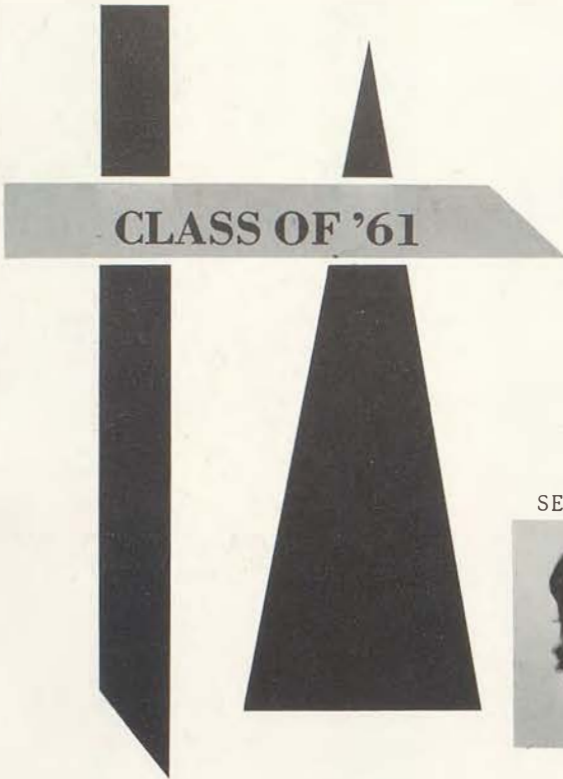
NAME	ADDRESS	TELEPHONE	NOTED FOR
HELEN FLEMINGTON	1 West Concord	Ja 3-8844	Big Blue Eyes
MARGARET ANN FRICK	424 East 73	De 3-3120	Zaniness
ROSEANN GARGOTTA	538 Troost	Ha 1-0583	Sweeping Eye Lashes
PATRICIA GERAGHTY	5931 Grand	Hi 4-8485	Long "blond" hair
MARY GRAHAM	25 West Concord	Ja 3-8233	Friendliness
BARBARA GRAMLICH	5323 Oak	Ja 3-3666	All-around ability
JESDON HAAKE	104 W. 54	De 3-4265	Neatness
KATHLEEN HALCRO	1461 East 76 Terrace	Em 1-4793	Perspicuity
JANE HARRIS	7601 Raytown Road	Fl 3-2133	Jolliness
MARY HELEN HENDON	440 E. 64 Terrace	De 3-6080	"Artiness"
LESLIE HORN	9001 Central	Hi 4-4116	Sincerity
CARROLL HOSKINS	616 E. 64 Terrace	Em 1-3820	Generosity
MARY ANN HOWARD	639 E. 73 Terrace	De 3-1956	Scatterbrains
LINDSAY HUGHES	646 W. 58	De 3-6047	Vivaciousness
CHARLOTTE HUNTER	8107 East 66	Fl 3-5745	Radiance
JANE KELLER	6522 Oak	De 3-9758	Absentee Slips
CONNIE KISSICK	612 East 66	De 3-7195	Blond hair and BROWNE eyes
PEGGY KLEIN	232 W. 52	Je 1-7289	Sleepiness
MARY LANCASTER	5720 Troost	Hi 4-5965	Humility
GLENDA LEE	8904 East 73	Fl 3-1931	Pixie Hair Cut
MARY LEE	1259 West 72	Hi 4-1430	Leadership
PAT LOFTUS	5826 Rockhill Road	Hi 4-1418	Love of Pink
MARION MANZELLO	5130 Grand	We 1-5967	Daintiness
THERESA MANZELLO	5130 Grand	We 1-5967	Voice
BARBARA MARSHALL	51 East 52 Street	Ja 3-5798	Slumber parties
MAUREEN MEINERS	449 West 99	Wi 2-2552	Quietness
JUDY MINIACE	1267 West 72	De 3-2022	Loquaciousness
SANDRA MAYER	829 West 55	Hi 4-8601	Stateness
PATTY MILES	6309 MorningsideSide	Hi 4-3535	Love of the sea
MARY BETTY MOORE	9801 Wenonga	Ni 2-2158	"FLIGHT"iness
SHARON MORRISSEY	4416 W. 72 Terrace	En 2-6469	Artistic Talent
MARY EILEEN NAERT	5140 Walnut	Va 1-0829	Sympathetic nature
VIRGINIA NELSON	7301 Walnut	De 3-4962	Congeniality
COLLEEN NESTOR	5230 Grand	Em 3-0857	Expressiveness
CAROL PALERMO	1019 W. 85	Em 3-1565	Quick diets
BETSY PARKS	35 E. 55	De 3-9235	Courteousness
LINDA PFEIFFER	9351 E. 69	Fl 3-1291	Proficiency
MARY PINCETL	5500 Central	Ja 3-6635	"Interior" ambitions
SUE QUIGLEY	5319 Rockhill Road	Ja 3-7329	Versatility
KAROLYN QUINLAN	418 East 59	Hi 4-6118	Transquility
SHARON RHINEHART	7412 Woodson	He 2-9286	Punctuality
CAROLYN RUDER	9904 Lee Circle	Ni 2-6730	Perserverance
KATHY RYAN	6424 Charlotte	Hi 4-4651	Willingness
KATHLEEN SCHURIG	1602 East 76	Ja 3-8300	Cheerfulness
LOUISE SERRONE	409 Garfield	Ba 1-7275	Dancing Ability
SHARON SHOEMAKER	620 E. 108 Terrace	Wi 2-0904	Long fingernails
CAROL STANLEY	35 E. 55	De 3-9236	Dimples
GENIE SULLIVAN	116 & 69 Highway	Ni 2-6878	Outgoingness
JoANN THOMPSON	3215 E. 27	Wa 3-5004	Sense of Humor
MARY ELLEN THORNHILL	1239 W. 63	De 3-3270	Niceness
DIANE TIEHEN	102 W. 65 Terrace	Hi 4-2240	Blush
ELAINE TODT	2914 W. 92 Place	Mi 9-1181	Wittiness
MARY ANNE TOBIN	1443 East 78	De 3-3907	Self-composure
CAROLE WELSH	5635 Rockhill Road	De 3-4536	Pixie-like quality
KAREN WHALEN	7420 El Monte	En 2-2810	Letters from George
FRANIE WHITAKER	1237 Huntington	Ja 3-0455	HARDYiness
SUZIE WILSON	6127 McGee	Ja 3-1260	Niceness
PAM WOODS	1119 East 76 Terrace	Em 3-0033	4' 11" stature
CAROLE ZAMMAR	5115 Forest	Em 1-2053	Sweetness

Compliments of
 ATLAS EXCAVATING & HAULING CO.
 721 East First Street

B. & G. MOTOR COMPANY
 5946 Troost

UNDERCLASSEMEN





PRESIDENT



Kathy Fisher

VICE-PRESIDENT



Kathy Fogarty

SECRETARY



Julie Murphy

TREASURER



Peggy Sue Morgan



Janet Allen



Barbara Antonello



Michele Baily



Marjorie Bauer



Carol Benik



Nan Best



Ann Butler



Sharon Calloway



Jill Churchman



Jody Clune



Karen Conroe



Linda Day



Catherine Emert



Suzanne Flanner



Susan Flatley



Sandra Flynn



Marie Gainey



Diane Ghent



Phyllis Gravino



Margay Green



Teresa Haake



Ann Hager



Marilyn Harris



Patti Hooper



Michele Hughes



Suzanne Kelly



Darleen Kerwin



Nancy Kingsley



Toni Klein



Sandra Klug



Donna Sue Lockert



Donna Lodde



Joanne Lynch



Sue Maguire



Margaret Mallory



Rita Markovich



Margie Martin



Marceline McConnell



Sheila McGrath



Mary McMahan



Martha Meagher



Virginia Melzarek



Barbara Merli



Marilyn Miller



Mary Rita Miller



Sharon Minnick



Mary Margaret Moran



Theresa Morris



Joanne Moyer



Kathy Newton



Helen Nothnagel



Diane O'Brien



Julie O'Connor



Mary Kathleen O'Connor



Katherine O'Leary



Marcia O'Neil



Marita O'Rourke



Janet Orscheln



Elena O'Shea



Karol Peterson



Margaret Pollock



Kathleen Porn



Kathy Richards



Cecilia Ruhlman



Esther Ryan



Kathy Schmanski



Julie Sheek



Anita Schmidt



Sally Sigourney



Sharon Smart



Jane Stadler



Carol Sobalvarro



Susan St. Clair



Sue Stephenson



Patricia Sweeney



Anne Triplett



Nancy Turner



Mary Lou Warters



Joanne Woster



Kreszenz Zacher



PRESIDENT
Joan Strayer



SECRETARY
Martha Leahy



VICE-PRESIDENT
Valerie Shaw



TREASURER
Marilyn Guarino

C
L
A
S
S
O
F
'6
2



Judy
Abboud



Margeret
Aberer



Carol
Albino



Aileen
Altman



Anna Jean
Armato



Kathy
Atchity



Virginia
Bertelsen



Ann
Bogdon



Dolores
Caldarello



Patricia
Doherty



Sharon
Everett



Elizabeth
Graham

Compliments of the SOPHOMORE CLASS



Janice
Gulotta



Frances
Gutowski



Linda
Hardwick



Roberta
Heinz



Vincie
Huber



Mary
Hughes



Cathy
Hughes



JoAnn
Kallenberger.



Betty
Karnes



Patty
Kealhofer



Valerie
King



Barbara
Kopp



Sara
Lascuola



Susan
McElhatton



Mary Sue
Moran



Jerolyn
Muenks



Peggy
Mulroy



Denise
Oades



Cathy
O'Brien



Mary
O'Leary



Sheryl
O'Neil



Linda
Plunkett



Concetta
Proffer



Jean
Quigley

Compliments of VICTOR ROSS INS. CO., 6001 Independence Ave., Kansas City, Missouri
TOBIN SEED COMPANY, 1317 St. Louis Ave., Kansas City, Missouri



Karen
Reidy



Kathy
Ridge



Patty
Robinson



Ann
Russell



Suzanne
Schockey



Judy
Schloegel



Nina
Selzer



Colleen
Simms



Glenna
Sheeran



Kathy
Sickman



Ruth Ann
Smith



Mary Ann
Stephens



Julia
Trotter



Pam
Thompson



Patricia
Cantrell



Jeanette
Vail



Sue
Wesley



Kathy
Wilborn



Patty
Clune



PRESIDENT
Kathy Metzler



VICE-PRESIDENT
Colette Kerr



SECRETARY
Sharon Reid



VICE-PRESIDENT
Betsy Bowes



TREASURER
Mary Ellen Stanley

CLASS OF '63



JoAnn
Calcara



Diane
Corazin



Maureen
Darrah



Mary Elaine
Devaney



Sue
Dolson



Sue
Eagen



Ann
Easter



Mary Martha
Faler



Nancy
Feters



Mary Jane
Fisher



Jane
Fogarty



Marjorie
Grindinger



Saundra
Hallauer



Louise
Hirt



Glenda
Hobsen



Diane Hoffman



Jody Hogsett



Mary Holland



Marcia Hood



Mary Rita Hope



Mary Keleher



Virginia Kelly



Jeannine Kerwin



Beverly Kobelt



Roberta Lancaster



Detta Lee



Cathy McCullough



Anita Maggio



Barbara Maggio



Maureen Malone



Dora Mammolita



Patty Marshall



Katy Mayer



Judy Messina



Marianne Milani



Vita Ann Monaco



Susan Murphy



Pauline Oddo



Carol Park



Diane Pasqualino
Compliments of



Kay Quick



Sally Rahner



Sharon
Reardon



Rita
Reintjes



Sandra
Reiser



Pat
Riley



Helen
Sanderson



Adeline
Santistevan



Shirley
Sheehan



Janet
Sheets



Janice
Sheridan



Sallye
Sickman



Paulette
Sizemore



Sally
Slezak



Lorelee
Spruill



Madelyn
Stallone



Kathy
Strayer



Kathy
Tiehen



Kathleen
Tobin



Cathy
Toohey



Kathy
Tutorino



Mary Jayneen
Van Dyke



Theresa
Vittorino



Nancy
Wells



Susan
Willey



Rose Mary
White



Diane
Zahner

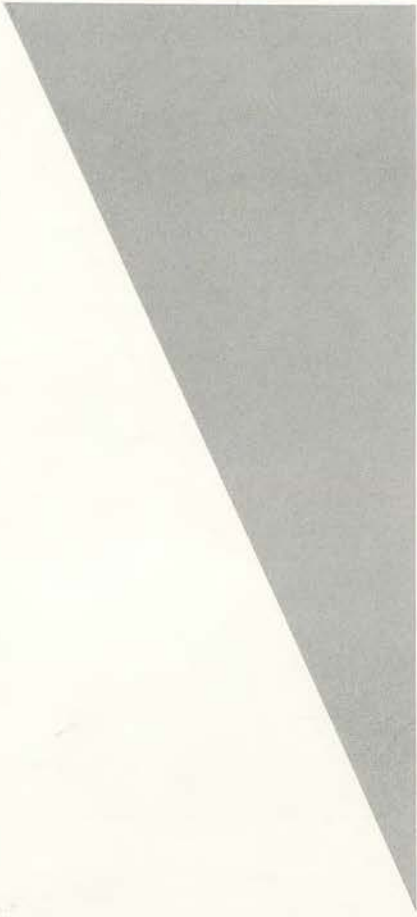
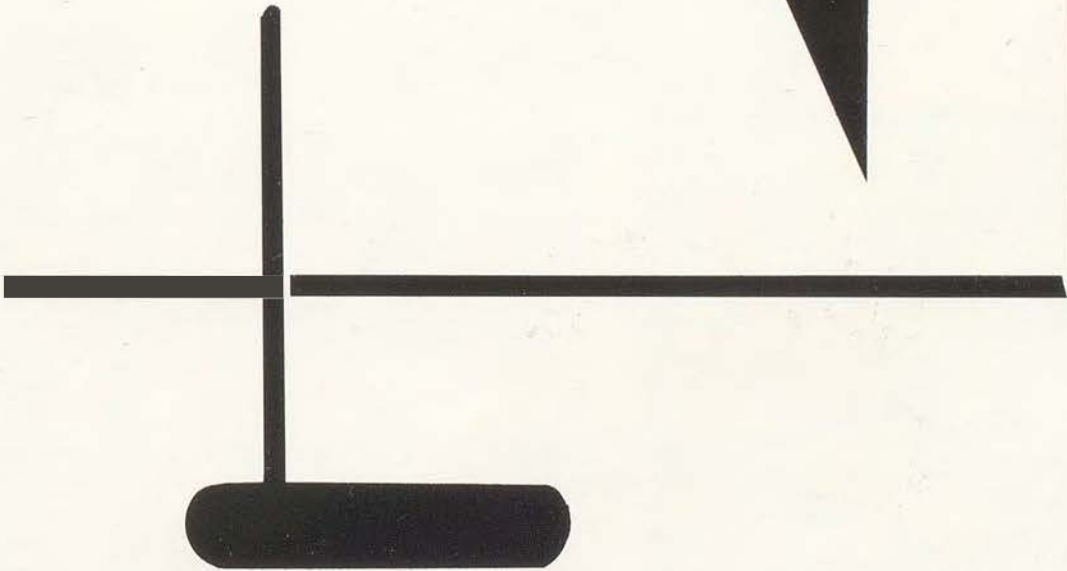


Donna
Zahner

Compliments of MERL BREWER-WM. O'BRIEN, Realtors, 4010 Washington; MIDWEST DISTRIBUTORS,
702 Linwood, Nel-8776

S
C
H
O
L
A
S
T
I
C

L
I
F
E

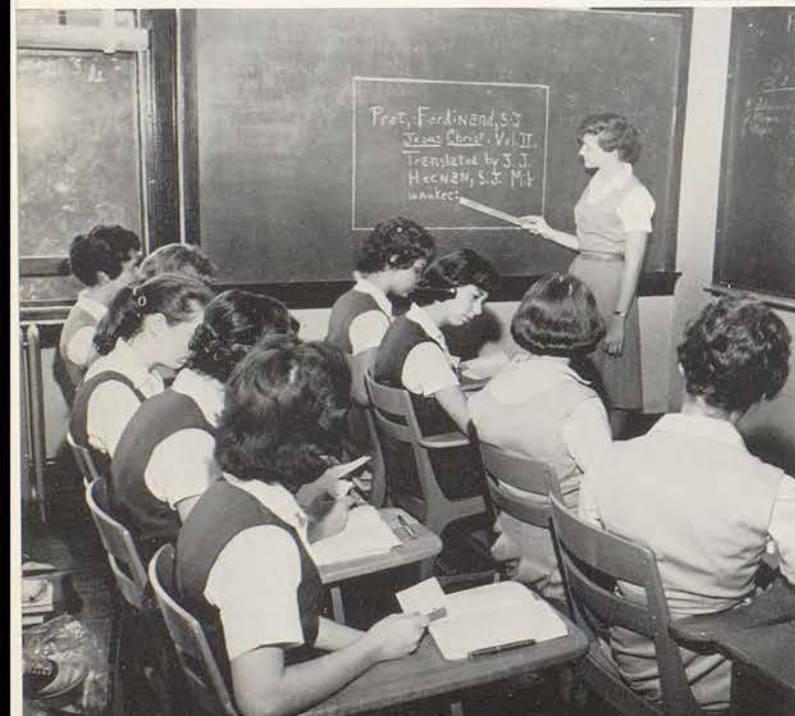




Speech proves to be interesting while Mary Betty demonstrates a handy gadget.

Seniors Strive for Goal

"Bubble, bubble, toil and trouble;
oxygen burns and hydrogen bubbles."



Seniors learn the basic fundamentals of writing a term paper--Sister Damien's English class.



Second year French students enjoy learning about the country of France from slides.

Stenographers prove courtesy is contagious by correct telephone technique.



Senior athletes realize "practice makes perfect."

Compliments of

DE LA SALLE MILITARY ACADEMY
1524 Paseo

KAPLANS FABRICS
4704 Broadway



New French students study the Romance language.

Juniors Hard at Work

Fred Waring's Pennsylvanians were never like this.



History students learn the background of their American heritage.



Religious training is the foundation for all education.

The third year English class looks on while Patti Hooper points to the location of Hawthorne's novel, The House of the Seven Gables, which the class is reading.



Juniors learn the ABC's of shorthand.



Biology appeals to scientific minded sophomores.

Sophomores Will be Scholars

Diagrams can be confusing. Can't they, sophomores?

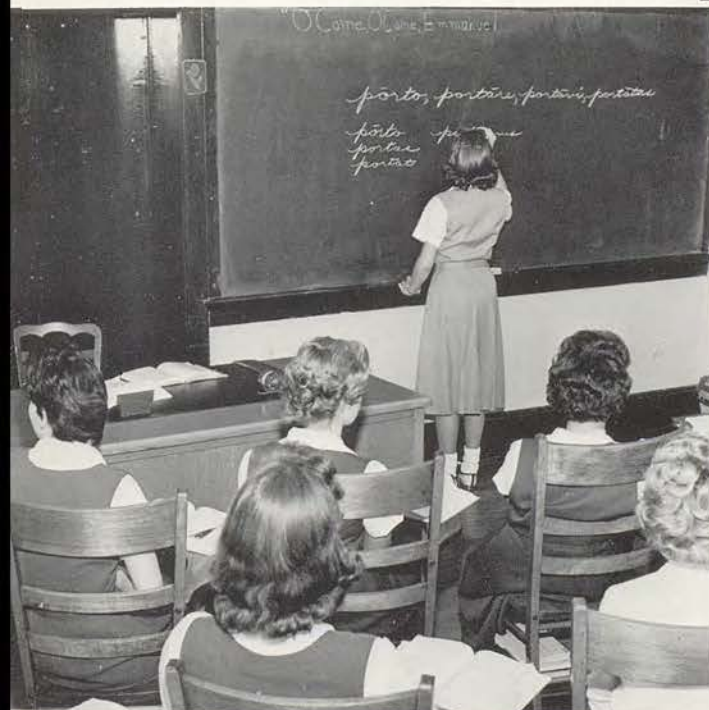


It can't be that bad, Judy.



The world atlas proves a source of knowledge for the history students.

Sophomore mathematicians strive to understand plane geometry.



These students do not agree that "Latin is dead."



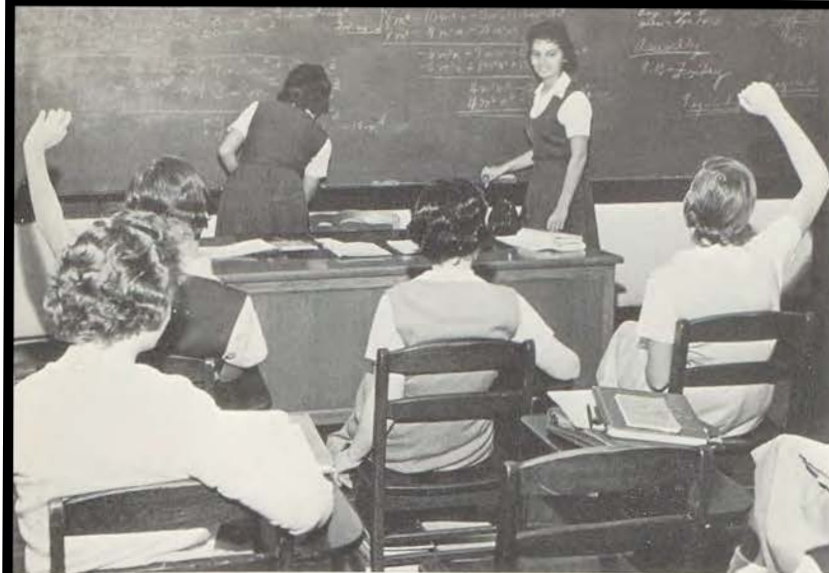
The map seems more interesting to Kathy and Mary Jayneen than reading the book.

Freshmen Start Out Right

Freshmen learn the importance of good usage in English Class.



Father Leavey's instructions answer the questions of these puzzled students.



Algebra students solve these difficult equations.

Hard working Freshmen will win another Latin trophy for S. T. A.



Freshmen are introduced to harmony in chorus class.

P
O
T
L
U
C
K



Compliments of

BINGHAM SINE, INC.
3815 Broadway

BARTELS AND SHORES
1400 St. Louis

The image features a minimalist abstract design on a light background. It consists of several geometric elements: a large grey triangle pointing downwards on the left; a vertical black bar with a pointed bottom on the right; a vertical grey bar with rounded ends on the far right; a horizontal black bar intersected by a vertical black bar on the left; and a horizontal black bar with rounded ends at the bottom left. The word "ACTIVITIES" is printed vertically in a serif font within the rightmost grey bar.

ACTIVITIES

THE

AVILA



Helen Alder



Diane Tiehen



Helen Hendon



Joanne Dehner



Regina Bartman



Cynthia Byrne



Roseann Gargotta



Carol Stanley
Compliments of



Sue Ann Coumbe

Co-Editors



Jeanne Dehner



Julie DiGiovanna

STAFF



Peggy Klein



Carol Palermo



Sandy Everett



Conni Kissick



Helen Flemington



Beverly Enna



Colleen Nestor
Compliments of



Louise Serrone



SHARON MORRISSEY



CHARLOTTE HUNTER



ELAINE TODT



MARIA BROWN

DART

THE DART

Kansas City, Missouri December, 1959



THE DART

Published by the students
of Saint Teresa's Academy
5700 Main Street
Subscriptions . . . \$1.00



Co-Editors Kathleen Halcro and Jo Ann Thompson
 News Editor Maria Brown
 Features Elaine Todt, Charlotte Hunter and Virginia Nelson
 Staff Artist Sharon Morrissey
 Columnists Mary Kay Abboud, Mary Pincetl and Leslie Horn
 Business Managers Gail Childress and Karen Whalen
 Make-up Mary Agnes Castrop and Mary Michelle Bien
 Exchange Editor Sue Quigley
 Staff Typists Mary Lee and Barbara Braun
 Reporters Antoinette Enna, Jane Keller, Mary Lancaster,
 Pat Geraghty, Mary Ann Carter and Sharon Shoemaker
 Circulation Betsy Ann Parks and Hester Adams
 Advisor Sister Agnes Bernard, C.S.J.



KATHLEEN HALCRO
Co-Editor

Compliments of

J. W. DONAHOWER AND ASSOCIATES
620 West 26th Street
Kansas City, Missouri

COMMERCE TRUST COMPANY
Member of Federal Deposit Insurance
Corporation -- 10th and Walnut

STAFF



GAIL CHILDRRESS



VIRGINIA NELSON



KAREN WHALEN



JOANNE THOMPSON
Co-Editor



The DART Staff rushes to meet the deadline of one of its six publications.

A
P
O
S
T
L
E
S
H
I
P
O
F
P
R
A
Y
E
R



On Tuesday of each week promoters of the Apostleship of Prayer meet with Sister Joseph Marie and the officers to plan the discussions and activities for the general meetings.



One of the activities sponsored by the Apostleship of Prayer was the talent show. Here a group of the Sophomores get ready for the tryout.

MARY BETTY MOORE
Vice-President

KATHY SCHURIG
Treasurer

SANDY MAYER
President

CAROLYN QUINLIN
Secretary



Compliments of

MAURINE AYLWARD

CALIFORNIA CATERES
1008 Walnut



JESDON HAAKE
Prefect



GENIE SULLIVAN
Vice-prefect



THERESA HAAKE
Recording Secretary

One of the apostolic projects of the Sodality is helping on Saturdays with the orphan girls at Pius X School. These juniors are enjoying their work.



JANET ORSCHELN
Corresponding Secretary

SODALITY



The sophomore Sodality group has undertaken to help the Sisters of Social Service with their work with the Mexican children at Guadalupe Center.

Compliments of
TODEMAN CABS, INC.
We 1-1500
Radio Dispatched
33 Years of
Dependable Service

The Best Deal
The Best Trade
The Best Service
The Best Car
See BRACE OLDSMOBILE
"Our 45th year at
27th & Main"



These girls were chosen by their classmates for their devotion and love of Mary to be in the traditional Sodality May Court. They are FROM LEFT TO RIGHT, TOP ROW: Colleen Simms, Teresa Haake, Mary Janeen Van Dyke, Janet Orscheln, Mary Agnes Castrop. SECOND ROW: Colette Kerr, Colleen Nestor, Barbara Gramlich, Sheila McGrath, Martha Leahy. BOTTOM ROW: Julie O'Connor, Virginia Nelson, Joanne Woster, and Margaret Pollock.

Compliments of

MONSIGNOR ARTHUR M. TIGHE
5141 Main Street
Kansas City, Missouri

ST. CATHERINE'S CHURCH
105th & Grandview Road
Hickman Mills, Missouri

May Queen



Jesdon Haake, as Perfect of Our Lady's Sodality, had the great privilege of crowning our Blessed Mother on May Day. Jesdon was chosen for this honor because of her outstanding Catholic example.

THE ATZENWEILERS
4628 Nichols Parkway
Kansas City, Missouri

Compliments of
ROGERS CAMERA STUDIES
Prairie Village
St. Teresa's Senior Class Photographers



The selling of "BUZZ BOOKS" — student directories — was one of the activities of the Missions this year.



PAT DUNPHY
President



LINDSAY HUGHES
Vice-President



JULIE O'CONNOR
Secretary



MARIE GAINEY
Treasurer

M I S S I O N S



S. T. A. students help foreign missionaries by saving stamps, particularly those that are hard to obtain.
Compliments of



Every Tuesday morning the officers of the Student Council, the homeroom representatives, and the presidents of the classes and various school organizations meet with Sister Tarcisia to discuss school problems.



President
MARY LEE



Vice-President
PAT SWEENEY



Secretary
KATHY BAUERS

STUDENT COUNCIL



One of the activities of the Student Council this year was to present a panel on proper grooming to the student body. The following girls presented in a very interesting manner different aspects of this subject: Joanne Dehner, Peggy Klein, Sue Quigley, Jo Ann Thompson, Barbara Gramlich, Mary Lee, Pat Loftus and Judy Miniace.

Compliments of
FRANK
ROBINSON AND
CO., INC.
406 West 11th
Street

ATHLETIC CLUB



BARBARA GRAMLICH
President



CARROLL HOSKINS
Vice-President

"Go Jayhawks, Beat K State!" were the cries of the Athletic Club members and chaperones as they boarded the bus for Lawrence February tenth.



The Athletic Club is one of the prominent organizations at S. T. A. Even those who do not have outstanding athletic ability may become members. Membership is attained by accumulating points earned through co-operation, good sportsmanship, and by participation in the various inter-class competitions. Under Miss Rear- don and Miss Christensen's able direction, the Athletic Club sponsors several enjoyable events during the school year and closes its season with the all school Field Day.

Compliments of
MERCANTILE BANK AND TRUST COMPANY
1119 Walnut



PATTY CLUNE
Treasurer



JULIE O'CONNOR
Secretary

GLEE CLUB



The Glee Club, under the direction of Sister Mary Judith, is made up of sophomores, juniors, and seniors. The girls are chosen for their cooperation and interest in music. During the year, the Glee Club performs at various choral programs and participates in the College-Academy Fashion Show and in the Music Festival.



THERESA MANZELLO
Vice-President



HELEN FLEMINGTON
President



JOANNE WOSTER
Secretary-Treasurer

Compliments of
 JAN'S LIQUORS AMERICAN CAB CO.
 4106 Broadway 1029 Troost
 W. M. Jankowski, Propr. Ha 1-5553
 Lo 1-1565

CONCERTS



SOLOISTS OF THE FALL CONCERT WERE: Jeannette Vail, JoAnn Woster, Theresa Manzello, and Genie Sullivan.

FESTIVAL FALL

In November the Sophomores, Juniors, and Seniors presented a Fall Concert of choral music.



Christmas Cantata



Mary and the Angel Gabriel.



The Christmas Tree was formed by the Senior Ensemble.



The Christmas story was told in song and tableau.

Compliments of
MELLODY-McGILLEY-EYLAR FUNERAL HOME
 1800 East Linwood
 20 West Linwood

S
E
N
I
O
R

C
L
A
S
S

P
L
A
Y



Scene 6 Dressing room in a small theater

Seniors of St. Teresa Academy

Present

Shubert Alley

St. Teresa Auditorium

February 13 and 14, 1960—8:15 P.M.



Director: Sister Agnes Bernard C.S.J.
Student Directors: Cynthia Byrne, Carol Palermo



Scene 3 The nursery of the Galviston home.



Scene 2 Lunch Room in New York Department store.

FOLEY PLUMBING AND HEATING
1516 East 9th Street
Vi 2-3971

Compliments of
DON L. BRON GENERAL CONSTRUCTION
8607 Corrington



At French Club meetings various aspects of France and her language are discussed. Here the president, Lindsay Hughes, gives some interesting highlights of her tour through France last summer.

French Club

An informal gathering of French Club members to work out the details of one of the monthly meetings.



The senior Classical Club derives great pleasure from reading Latin Plays.

Classical Club

The junior members of the Classical Club are working hard in order to have many Latin scholars at Saint Teresa's.

Compliments of
O. H. GERRY OPTICAL COMPANY
221 Professional Bldg.
Kansas City, Missouri



Mrs. Gloria Von Stein shows the members of the Business Club how important good grooming is.



Business Club



When Business Club members visited the Court House they received interesting information from Mr. Miniace, a prominent K.C. lawyer.

Math can prove to be fun as well as informative as demonstrated by these two junior members of the Math Club.



Math Club

The senior Math Club proudly displays their Christmas Tree made out of geometrical figures.

Compliments of

ST. PETERS CHURCH
6415 Holmes
Kansas City 10, Missouri

MERCHANDISERS, INC.
3111 Holmes
Kansas City, Missouri



Christmas time rolls around and speech club members prepare for their annual entertainment.

Speech Club

Macbeth gone "man like beatnik" in senior speech club skit.



The Art Club laughs at a witty remark made by its president, Elaine Todt (far right).

Art Club

Each member contributes to the design of the posters for the senior class play.

Compliments of
ELECTRIC UTILITIES CORP.
4118 Broadway--We 1-1810
Kansas City 11, Missouri



The Sewing Club shows the fashions they have made throughout the year.

Sewing Class Fashions



The Sewing Club is proud to show the school their creations, when the annual fashion show comes.



Library Club

ABOVE: Library assistants are willing and able to help Sister Alphonsa. LEFT: Three members of the club help keep things in order.

BILL REISER

Compliments of

TED REISER



HIGH POINT GIRLS: Karol Peterson, Barbara Marshall, Linda Day, Conni Kissick, Sandra Reiser, Sue Eagan, Sue Wesley. NOT PICTURED: Margo Aberer.

A
V
I
L
A

D
R
I
V
E



HOMEROOM REPRESENTATIVES: Mary McMahon, Marita O'Rourke, Sue Wesley, Kathy Atchity, Diane Tiehen, Roseann Gargotta, Kathy Tuterino, and Collette Kerr.



High point girl of school
Linda Day.



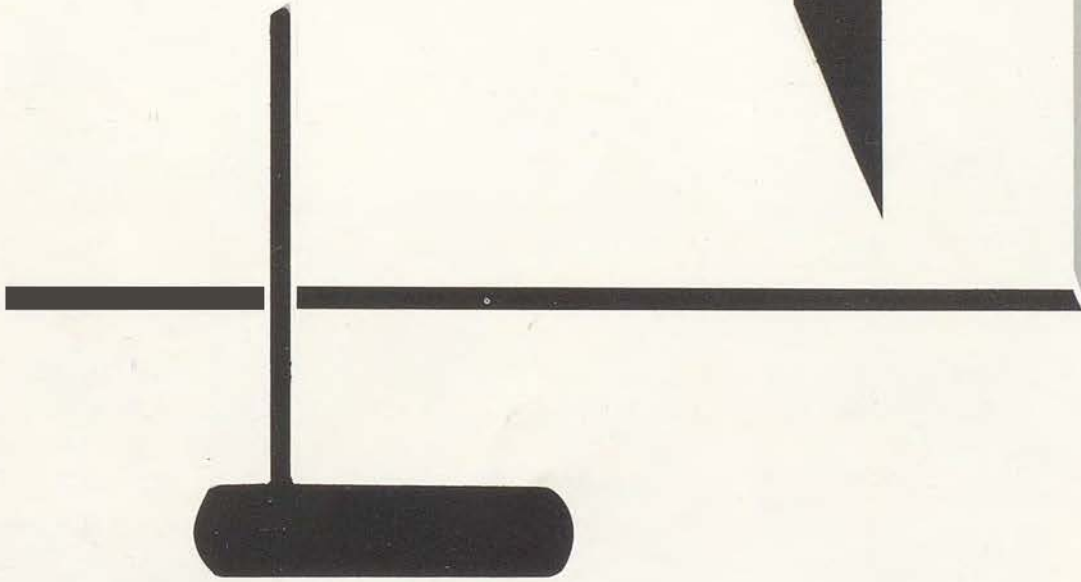
In order to boost the Avila drive, the staff presented a skit for the student body.

RAY SMITH FORD CO.
Falcon, Ford, and Thunderbird
225 West 74 Terrace

Compliments of
VICTOR BERLINE OF PARIS PHOTOGRAPHER
3546 Main

**S
O
C
I
A
L

L
I
F
E**



Prom Attendants

The Seniors' choice for attendants for the Prom is: Marie Gainey and Virginia Melzarek. They were chosen because of their winning personalities and will grace the left and right of the Queen's throne the night of the Prom.



Compliments of
THE SENIORS



Prom Queen

"Here she is our Prom queen, here she is our ideal." The lovely and vivacious Prom Queen of 1960 is Barbara Gramlich. Chosen by the Junior class for her warmth and friendliness, she will reign at the Junior-Senior Prom early in May.

Compliments of
THE JUNIORS

T W I N D A N C E



Many striking twosomes were seen at the dance sponsored by the Athletic Club. A prize was given to the most original pair of twins.



Compliments of

TASTEMARK MILK - BUTTER - ICE CREAM
82 3110 Gillham Road Va 1-3880

SKEER, FLANAGAN AND WHITE
"Business Property Specialists", Commerce Building Vi 2-3403



The whole school were the guests of the Avila Staff at a celebration dance climaxing the end of the ad drive.



Charlotte Hunter, the Senior candidate, was crowned AVILA Queen by Jeanne and Julie, co-editors.

AVILA DANCE



Compliments of
WEAVER AIRLINE PERSONNEL SCHOOL SOUTHSIDE BANK
2020 Grand Avenue, Kansas City, Missouri 3838 Main Street, Kansas City, Missouri



The Freshmen were the guests of the Sophomores at a dance held over the Christmas Holidays. The theme of the dance, White Christmas, was carried through the decorations surrounding the gym.

WHITE CHRISTMAS



Compliments of
FORMICA WESTPORT BANK
119 East 18th St. , Vi 2-1780 331 Westport Road



The Seniors entertained the Juniors with the annual semi-formal. The theme, "Misty," was carried out in the decorations and in the "bubbling" beverage.

M I S T Y



Compliments of
INVESTORS DIVERSIFIED SERVICES AND MUTUAL FUNDS
3812 Broadway

PAT O'LEARY ASSOCIATES
2532 Johnson Drive, Kansas City, Kansas

A
L
O
H
A

D
A
N
C
E



The Glee Club sponsored a lovely Hawaiian dance at which leis were very much in evidence.



Compliments of

MILLER STAUCH CONSTRUCTION CO.
Railway Exchange Building

EARL F. BROSNAHAN COMPANY
Kansas City, Missouri

H O M E C O M I N G



We were proud to have Jody and Jeanne represent St. Teresa's Academy at the 1959 Rockhurst Homecoming. They were honored during the many festivities of the Homecoming weekend.



JODY CLUNE, QUEEN

HOFFMAN UNIFORM COMPANY
2720 West 43rd Street
Kansas City, Missouri



JEANNE DEHNER, ATTENDANT

WHITE'S DRIVE IN
50 Highway and Gregory Blvd.
Raytown, Missouri

H
O
N
O
R
A
R
Y

C
A
D
E
T
S



These Honorary Cadets of the 1960 Military Ball, Julie DiGiovanna, Charlotte Hunter, Genie Sullivan, Lindsay Hughes, await their turn to march under the Sabre Arch.



GENIE SULLIVAN



CHARLOTTE HUNTER



LINDSAY HUGHES



JULIE DIGIOVANNA

A
U
T
O

S
H
O
W



These girls were chosen to represent S. T. A. at the 1960 Auto Show. Darleen Kerwin, Miss Cadillac, crowns the Queen, Jill Churchman, while Kathy Tuorino, Miss Mercury, and Charlotte Hunter, Miss Corvaire, look on.

Compliments of

THE AMERICAN BRASS COMPANY
106 West 14th Street

THE CATHOLIC REPORTER
300 East 36th Street



The Seniors were hostesses at a mixer given for the Juniors and Seniors of De La Salle, Rockhurst and St. Teresa's.

MIXERS



The Juniors invited the Seniors to a mixer held for Rockhurst and St. Teresa's.

Compliments of
BOGDON'S CANDIES
 Fine Chocolates - Party Candies - Original Reception Sticks
 2808 West 53rd - Fairway

VALENTINE DRIVE U-R SELF
 Complete Truck Rental
 3626 Main Va 1-3500

NATIONAL C.Y.C. CONVENTION



Seventeen thousand Catholic youths attended the National C. Y. C. Convention in Kansas City. Panel discussions, social gatherings, Solemn High Mass and Cardinal Cushing as Principal speaker, were highlights of the occasion.



Compliments of

THE CYC OF
CHRIST THE KING PARISH

A. T. SWITZER PAINTING CO.
4828 Chelsea Un 1-1700

AH! WISCONSIN!!



Compliments of
RODENBECK CONSTRUCTION CO.
"Builder of Homes Beautiful" 11300 Greenbrier

DEE'S CLEANERS
110 and 71 Highway So 1-5069



Compliments of

FOXES DRUG STORE
Raytown, Missouri

BETTER FOODS
1012 Troost





No Applause Please

WHAT!



Can Can Anybody?



MISS



Beauty

1
9
6
0

and the
Compliments of



Beast

HOLSUM BREAD CO.
814 Southwest Blvd.

BUSINESS PATRONS

A

- A. A. A. PLUMBING COMPANY
2014 INDIANA, BE 1-2240
- ACME HEARING CENTER
1006 GRAND
- ACME QUALITY PAINTS, INC.
6947 TOMAHAWK ROAD
PRAIRIE VILLAGE, KANSAS
- HESTER ADAMS
6107 WALNUT
- AEROVENT FAN CO.
WM. P. HOBSON
8715 JARBOE, EM 1-5029
- ALADDIN BEAUTY COLLEGE
3015 TROOST, LO 1-2112
KANSAS CITY'S FINEST BEAUTY
COLLEGE
- ALADDIN RUG COMPANY
3959 BROADWAY
"THE HOME OF FINE CARPETING"
- ALTA'S MUSIC MART
(DISCOUNT PRICES)
6307 BROOKSIDE PLAZA
- MR. & MRS. WM. C. ALTMAN
- AMBASSADOR CLEANING CO.
3728 WEST 95
7621 TROOST AVENUE
- AMBROSE-WEINAND CO.
EN 2-7070
KANSAS CITY, MISSOURI
- AMERICAN RUG AND FURNITURE
CLEANING CO.
3004 TRUMAN ROAD
- DEE ANDERSON'S BOARDING KENNELS
1 EAST 97TH STREET, WI 2-3590
- ANNUNCIATION PARISH
REV. VICTOR G. MOSER, PASTOR
- ARTCRAFT STORE EQUIPMENT CO.
1206 TRUMAN ROAD
- ASHCRAFT TEXACO SERVICE
5600 TROOST
- ASSOCIATER REALTY CO.
JOHN McCUE
DE 3-6300 FL 3-0300
- ASSUMPTION CHURCH
FATHER AHEARN
- ATCHITY'S FOOD MARKET
5105 EAST 24TH STREET
- ATHLETIC CLUB
- CAMILLE AZAR AND SONS
905 BROADWAY
- BEST JEWELRY COMPANY
3928 MAIN STREET
- BISHOP 66 SERVICE
110TH STREET AND 71 HIGHWAY
- BLAYLOCK'S PHARMACY
MOTOR CAR DELIVERY SERVICE
PROSPECT AT 72ND., JA 3-3126
- BLUE RIDGE BOWL
FLEMING 6-1950
- BOOTS TAVERN
4707 TROOST
- BORDMON INVESTMENT CO.
1501 McGEE
- JOSEPHINE BORSERINE
SPEECH AND DRAMA
5100 OAK, JA 3-3848
- BOULEVARD CLEANERS & DYERS
922 WEST 48, WE 1-7171
- BOYLE POULTRY COMPANY
6924 TRUMAN ROAD
- ED BRADLEY HARDWARE
906 SOUTHWEST BLVD.
- BRANDMEYER'S
1501 WESTPORT
- BRECKLEIN & RINGS
5500 OAK, HI 4-5100
PRESCRIPTIONISTS
- CLIFF BRISBOIS REALTORS
5406 JOHNSON DRIVE
- BROADMOUR SUPER MARKET
4882 MAIN

B

- BATY HARDWARE
2814 WEST 53RD.
FAIRWAY
- BELSAW MACHINERY
315 WESTPORT RD.

BENEDICTINE FRIAR

BENJAMIN STABLES
87TH AND HILLCREST RD.

BERNIE'S SKELLY SERVICE
7700 STATE LINE



BROADWAY RADIO & TV CO.
5023 MAIN STREET

BROOKSIDE CLEANERS
645 EAST 59 STREET
DE 3-1156

BROOKSIDE DRUGS, SUNDRIES
5901 MAIN, HI 4-6464

BROOKSIDE FABRICS
126 WEST 63RD. STREET

J. R. BROWNE GROCERY
3300 PENNSYLVANIA

BRUSH CREEK MOTORS
5900 TROOST AVE.

DON BRYAN'S STUDIO
4610 TROOST

BUILDER'S SAND CO.
KANSAS CITY 6, KANSAS

BUNGE CORPORATION
370 BOARD OF TRADE BUILDING

BUSINESS SUPPLY CO.
415 W. 75TH ST.
EM. 1-3954

C

CAKE SHOP
1201 KANSAS

CAMPUS BOOK STORE
AND STATIONERY CO.
2504 E. 31, WE 1-1200

R. D. MANN CARPET CO.
926 WYANDOTTE, VI 2-1171

CARROLS
BETTER FOODS PRICED RIGHT
5444 TROOST, HI 4-6300

CARROLL'S TV 66-SERVICE
9724 EAST 50 HIGHWAY
RAYTOWN, MISSOURI

CHANDLERS
101 WEST 5TH

CHICKEN DELIGHT
43RD AND MAIN
FREE DELIVERY

CHUCK AND CAROL

CHUCK HOUSE
1433 GRAND AVE.

CITY TELEVISION SERVICE
5923 TROOST, JA. 3-8991

CLARA'S FLOWERS
827 EAST 83RD

THE CLINIC
1224 E. 12TH ST.

CLUB MICHAELS STEAK AND
PIZZA HOUSE
9TH AT WOODLAND

C. & O. DISTRIBUTING COMPANY,
INC.
GENERAL MERCHANDISE WHOLESALER
806 BROADWAY

COMMERCIAL LITHOGRAPH CO.
1226 CHESTNUT
KANSAS CITY, MISSOURI

COMPLIMENTS OF A FRIEND

COMPLIMENTS OF A FRIEND
IN SHAWNEE, KANSAS

CONSOLIDATED TRANSFER
1606 CHERRY

CONWAY, THOMAN V. JR.
1111 SCARRITT BUILDING

HOWARD COOK & CO.
REALTOR INSURANCE COUNSELLOR
311 WEST KANSAN, CL 4-6600

LES COPLEY ORCHESTRA
RA 2-2250

COUNTRY CLUB MARKET
5636 TROOST

COUNTRY CLUB PHARMACY
5054 MAIN

COUNTRY CLUB STANDARD
SERVICE
63RD AND OAK

CRICK CAMERA SHOP
6319 BROOKSIDE PLAZA

CROSS FOOD CENTER
FOR THE USUAL AND UNUSUAL
SOUTH OF TWIN OAKS

D

DALTON'S FLOWERS
OVERLAND PARK
NI 2-2112

ROY E. DALY & CO.
1011 TEMPLE BUILDING

DEAN MACHINERY CO.
"CATERPILLAR" PL 3-5300
1201 WEST 31ST STREET

JOHN DEERE PLOW CO.
3210 EAST 85TH

DeFEO FRUIT COMPANY
401 W WALNUT

DE GROSS SERVICE
4880 MAIN

THE DEHNER COMPANY
1257 BEDFORD

DeMARIA FRUIT CO.
313 W WALNUT

DOLL HOSPITAL & DOLL HOUSE
5318 PASEO

I. DONNELLY CO.
1121 McGEE

MICHAEL J. DONOHUE

DONOVAN'S SERVICE
5912-16 NIEMAN RD.
SHAWNEE, KANSAS

DOROTHY'S BEAUTY SALON
16 WEST 63, JA 3-1800

DOUBLE-S-VENDING CO.
HU 3-3753

DO YOU READ THE WEDNES-
DAY MAGAZINE? EVERYBODY
ELSE DOES!

DRUMMOND AND SONS
6328 BROOKSIDE PLAZA

DUFFS GROCERIES & MEAT
MARKET
6844 PROSPECT, JA 3-9800

DUKE'S D-X SERVICE
3 WEST 63RD

DUKE'S PLAZA DRUGS
31ST AND INDIANA
WA 4-2220

DURAN MOTORS
6227 TROOST

E

E & S THEATRE ENTERPRISES
221 WEST 18TH STREET

EAST SIDE AUTO PARTS CO.
8101 TRUMAN ROAD

ECHO PHOTO REPRODUCTION
1714 GRAND

ECONOMY FABRIC SHOP
7435 BROADWAY, JA 3-9601

ERNE FROM BOPSVILLE

ETEM INSURANCE AGENCY
111TH & 71 HIWAY
HICKMAN MILLS

HENRIETTA EVERETT
HARDIN & STOCKTON CO.
5600 JOHNSON DR. HE 2-620

F

MR. & MRS. NEAL M. FALER
637 E. 65TH TERRACE

FAMOUS RESTAURANT AND
COCKTAIL LOUNGE

FIRST NATIONAL BANK

G. R. FISHER MEAT CO., INC.
418 E. 3RD ST.

DR. AND MRS. FLATLEY
827 HUNTINGTON ROAD

FLEMINGTON DISTRIBUTORS
2560 HOLMES
KANSAS CITY, MISSOURI

FOOT SAVER SHOP
PETTICOAT LANE

DR. H. D. FOSTER, CHIROPRACTOR
OFFICE & RESIDENCE
421 GREGORY

HENRY FOX
1114 GRAND

FRANKLIN "66" SERVICE
63RD AND MAIN

FRANK'S BARBER SHOP
1415 E. 55TH ST.

FRESHMEN A.

FRESHMEN'S FRIEND

G

GAINES POULTRY
1820 TROOST

GARDNER'S SERVICE
50 HIGHWAY AND GREGORY
RAYTOWN 33, MISSOURI

GATE CITY GLASS CO.
118 W. 5TH ST.





D. H. GERVAIS, INSURANCE
BROKER

JIM GIBLIN
4618 W ARWICK

GLENCOE CLEANERS
5101 MAIN

THE GOLDEN HORSESHOE
3243 TROOST

GRAHAM SHIP BY TRUCK CO.

GRANDVIEW BANK
127TH & 71 HIWAY

GRANDVIEW STANDARD STATION
13116 S. 71 HIWAY

GRANT'S CAFE
8431 WORNALL RD.

JAMES A. GREEN JR. & CO.
CUSTOM HOUSE BROKER
GR 1-2882

GREEN JEWELRY COMPANY
1010 WALNUT, K. C. , MO.
CLASRRINGS IMITATIONS DIPLOMAS

GREGORY SKELLY SERVICE
7101 PROSPECT

GREINER AND MUELLER
ARTIFICIAL HUMAN EYES
RIALTO BLDG. , K. C. , MO.

MAX GRIFFITH

GRIME'S GOOD STORE
1719 W. 39TH

A. J. GRINDINGER

GALE GROSSMAN
216 W. 47TH STREET
VA 1-3307

H

CHARLES G. HAAKE AND SONS
1820 MAIN ST.

MR. HADKIN'S
402 E. GREGORY

REV. DONALD M. HARTIGAN
2416 SWOPE PARKWAY

DR. M. G. HATFIELD
219 E. 63RD ST.

MRS. JOHN C. HAUSAMAN
4617 JEFFERSON

THOMAS T. HAYES JR. & CO.
REAL ESTATE & INSURANCE

H. B. B. C.

HELZBERG'S HOUSE OF
TREASURES
400 NICHOLS RD.

HEN HOUSE SUPER MARKET
8230 WORNALL
EM 3-2323

HENRY'S SHOE REPAIR SERVICE
5920 TROOST

HIGHWAY TRAILER

HODKINS MARKET
402 E. GREGORY BLVD.

HOGERTY'S
12 W. 63RD ST.

HOLY TRINITY CHURCH
934 NORTON

HORN FAMILY

HOROWITZ-GARGOTTA PRODUCE
25 E. 3RD
KANSAS CITY, MISSOURI

HOTEL STYLE STEAKS
SAT. 9 AM TO 5 PM
228 W. 75TH ST. IN WALDO

TOM HOULIHAN MEN'S WEAR
4743 PENN

HUBBELL METAL INC.
801 ATLANTIC

A. L. HUBER AND SON
6540 CHARLOTTE

I

INDUSTRIAL EQUIPMENT CO.
2815 MAIN STREET
KANSAS CITY, MISSOURI

IN HONOR OF ST. TERESA

KANSAS CITY LIFE INSURANCE
COMPANY BROADWAY AT ARMOUR

INSURED TRANSP. SERVICE
WI 2-1600

INTER CITY MARKET
8501 WINNER ROAD

INTERSTATE BINDERY CO.
3416 E. 23RD
KANSAS CITY 27, MISSOURI

J

JACKSON COUNTY SUBURBANS
2520 SWOPE PARKWAY

JAY'S CONOCO SERVICE
85TH AND WORNALL

JENNIE'S PLACE
511 CHERRY
HA 1-8543

JERRY'S CONOCO SERVICE
8909 WORNALL ROAD
FREE PICK UP & DELIVERY

JODY'S REST. AND LOUNGE
825 EAST 31 ST.

JOE'S STANDARD SERVICE STATION
23RD AND BENTON

J. C. JONES LUMBER CO.
12914 - 8TH ST.
GRANDVIEW, MISSOURI

JUSTRITE BEAUTY SHOP
9054 E. 50 HIWAY
RAYTOWN, MISSOURI
FL 3-3901

JUSTRITE SUPER MARKETS
5931 TROOST

K

KANSAS CITY CHIP STEAK CO.
1101 S. 5TH STREET
KANSAS CITY, KANSAS

K. C. BAR AND JANITOR SUPPLY
1300 E. 8TH
HA 1-0898

K. C. FRUIT CO.
317 WALNUT
KANSAS CITY, MISSOURI

KARS BROTHERS STATS
FLOWER SHOP
128 W. 12TH ST.

KATHRYN'S LETTER SHOP
2412 GRAND
BA 1-7320

FATHER V. L. KEARNEY

KEARY KITCHEN CO.
5812 QUINCY
DE 3-5851

MR AND MRS. W. D. KELLY, JR.

MR. AND MRS. J. E. KERWIN

KING LOUIE OF KANSAS CITY

KIRBY CO.
2934 CHERRY

KLECAN GRAIN COMPANY
KANSAS CITY BOARD OF TRADE
BLDG.

PAUL M. KLEIN AGENCY
6155 OAK STREET
KANSAS CITY 13, MISSOURI

RANDY KNIGHT
J. C. NICHOLS C.
LO 1-3456

KORNFELD-THORP ELECTRIC CO.
2700 MCGEE TRFWY.
BA 1-4000

L

FATHER L.

R. C. LAMB
50 EAST CONCORD

KENNETH D. LANCASTER
OPTICIAN
6239 BROOKSIDE PLAZA

LANGLY'S CRAFT SHOP
4740 PENNSYLVANIA AVENUE

L'ART COIFFURE BEAUTY SALON
MEADOW LAKE SHOPPING CENTER
EN 2-2326

LEAWOOD CLEANERS
2517 SOMERSET DR.
MI 9-0700

LIBERTY LOCKER
130 SOUTH MAIN
LIBERTY, MISSOURI

LINVILLE LARK'S STANDARD
STATION
51ST AND MAIN STREET

LIPARI'S THRIFTWAY FOOD STORE
800 KANSAS AVENUE
KANSAS CITY, KANSAS

HENRY LIPPELGOES
PAINTING & DECORATION CO.
1607 OAK

LLOYD'S BEAUTY SALON
7711 W. 63RD
HE 2-7272

GAETANO LOCOCO

LODDE ENGINE AND MOWER SERVICE
5632 TROOST
JA 3-4181

MR. AND MRS. JOSEPH LOMBARDO





LUCAS EISEN AND WAECKERLE, INC.
916 WALNUT STREET

LUCE-PACKWOOD
919 MAIN STREET
KANSAS CITY 5, MISSOURI

LUCKY STRIKE LANES
404 W. 90TH ST.
EM 3-3131

LYON'S DRUG COMPANY INC.
11305 HIGHWAY 71

M

BILL MACE JEWELRY
6321 BROOKSIDE PLAZA
HALLMARK GREETING CARDS

MR. AND MRS. C. N. MALLORY
712 E. 72ND TERRACE

MANOR HALL PHARMACY
3848 TROOST

BOB MANN

MARLBOROUGH CLEANERS
8000 WOODLAND

MARQUIS ROOFING CO.
1724 CAMPBELL

JOHN A. MARSHALL CO.
110 W. 9TH

MARTIN'S FINER FOODS
7960 LEE BLVD.

CHARLES MASUR FURNITURE CO.
5843 SWOPE PARKWAY

MATHES MEAT MARKET
526 CENTRAL AVENUE
DR 1-4835

MR. AND MRS. BILL MATHEWS
21 EAST CONCORD

McCRACKEN'S ROCKHILL DRUGS
1025 E. 63RD ST.
HI 4-7300

McDONALD, EVANS & CO.
INVESTMENT BROKERS-FINANCE
BLDG.

MONSIGNOR McDONALD
5141 MAIN ST.

HENRY F. McELROY
3131 BROADWAY

McGONIGLE FOOD STORE
1307 W. 79

McLAUGHLIN HAIRDRESSER
6313 BROOKSIDE

McQUEENY-HENDON, INC.
440 EAST 64 TERRACE

MR. JAMES R. McQUEENY
17 WEST 57 STREET

MEADOW LAKE GREEN HOUSE
79TH AND STATE LINE

METROPOLITAN CONSTR. CO.
6000 E. 60TH
DE 3-7055

CHARLES S. METZLER

METZLER BROS. & CO.

LARRY MEYER 66 SERVICE STATION
6966 MISSION ROAD

MICKY'S TOBACCO STORE
423 WEST 6TH ST.

MID STATES ORNAMENTAL IRON CO.
5321 E. 9TH STREET

MIDWEST MECHANICAL
CONTRACTOR
JA 3-5335

MIKE & PHIL ARNONE 66 SERVICE
8301 EAST TRUMAN ROAD

M. G. MILENS & SONS
7416 WORMALL RD.

MILKDRIVERS AND DAIRY EMPLOYEES

MISSION BOWL
5299 MARTWAY
HE 2-7000

MISS MARGARET O'SHEA

MISSOURI TYPEWRITER CO.
1025 EAST 31ST

MISSOURI-KANSAS CHEMICAL CO.
1708 CAMPBELL, GR 1-1826

MOBRO CORPORATION
424 LOCUST TRAFFICWAY

MODERN FOOD SERVICE INC.
6300 FAIRLAIN DRIVE

MONTE DECORATOR

MOSLER SAFE CO.

MRS. J. O. MUENKS
6101 OAK STREET

JOHN D. MULLANE INSURANCE
AGENCY
1012 BALTIMORE BUILDING

C. A. MURDOCK
215 EAST 11th

MURPHY DRUGS
7425 BROADWAY

ROSALIA MUSER

A. L. MYERS
CONSTRUCTION COMPANY
6103 PROSPECT

MR. AND MRS. RALPH E. MYERS
6700 GRANADA LANE
PRAIRIE VILLAGE, KANSAS

N

NAVAJO FREIGHT LINES INC.

JOHN T. NESTOR
5230 GRAND

NICK DE PASCO TAVERN
3809 EAST 12 STREET
BE 1-9666

NILES AND MOSER CIGAR
920 BROADWAY

MERLE NORMAN
2 EAST 39TH ST. , ROOM 216
WE 1-2645

NUTZEL MACHINERY CO.
RAYTOWN 33, MISSOURI

O

O'BRIEN FAMILY
5401 WYANDOTTE

MR. & MRS. P. O'BRIEN
8701 WEST 73 TERRACE

O'BRIEN REALTY & INS.
12718 SOUTH 71 HI-WAY

ODDO'S MARKET
8016 WORNALL ROAD

VINCIENT J. O'FLAHERTY COMPANY
4117 BROADWAY

PAT O'LEARY ASSOCIATES
2532 JOHNSON DRIVE
FAIRWAY SHOPPING CENTER

OLD AMERICAN INSURANCE
4900 OAK

OLSON'S CHAMPLAIN SERVICE
5105 GIBBS RD.

ONE STOP PHONO RECORDS
1113 BROADWAY
KANSAS CITY, MISSOURI

OPAL'S ELAGANT FASHIONS
10019 EAST 63RD ST.
RAYTOWN, MISSOURI
FL 3-1960

THE OPERATING ENGINEERS
LOCAL NO. 6, 6A AND 6B
2637 EAST 7TH

ORLANDO LIQUOR STORE
9809 NEW 40 HIGHWAY

SHIP VIA ORSHELN BROS.
TRUCK LINES INC.
INTERMEDIATE AND BEYOND

MISS MARGARET O'SHEA

BUD OSTERMEYER
JEWELRY & WATCH REPAIR
11606-S-71-HIGHWAY

THE CHURCH OF OUR LADY

KATHY OXLER

P

CHARLES PALERMO AND
COMPANY

PANHANDLE EASTERN PIPELINE
CO.
1221 BALTIMORE AVE.

PARK MANOR CLEANERS
3421 BROADWAY
LO 1-3730

PASEO BOOK AND SUPPLY CO.
4843 WOODLAND

PAUL'S T. V. SERVICE
203 EAST 70TH TERR. , N.
GLADSTONE, MISSOURI

PEDLAR'S WAGON
7112 WORNALL RD. , DE 3-2114
GIFT SHOP

PEPSI COLA CO.
1200 BURLINGTON

PATRICIA PETERSON
5324 HARRISON

MR. & MRS. PAUL A. PETERSON
5324 HARRISON

PETE'S "66" SERVICE
85TH HOLMES

PHYSICIAN'S EXCHANGE
AMBULANCE
2826 MAIN STREET

PIANE LIQUOR STORE
3955 MAIN

PIERRE SALON
5002 MAIN

PISCIOTTA FRUIT & VEGETABLE
411 WALNUT
KANSAS CITY, MISSOURI

PLA-MOR BOWL
3140 MAIN ST.

CHARLES POLITO-PRODUCE CO.
5842 SWOPE PARKWAY

PONCA GRAIN CORPORATION
4722 BROADWAY
KANSAS CITY, MISSOURI

MRS. JOHN R. PORN

POSTURE GRAMER CHAIRS
625 ADAMS

POWER MATIC WOODWORKING
MACHINES
5822 REEDER
SHAWNEE, KANSAS

REV. DONALD POWERS
SAINT AUGUSTINE PARISH

PRESIDENT GARDENS CLEANERS
8225 TROOST AVE.



PRESTO FOOD PRODUCTS INC.
2756 CHERRY

PROBASCO'S TAVERN
5424 TROOST

PROSPECT TELEVISION CO.
5621 PROSPECT

Q

QUALITY TELEVISION SERVICE
INC.
6940 PROSPECT
HI 4-4306

MR. AND MRS. R. F. QUICK

MR. & MRS. H. H. QUIGLEY

R

RADIO STATION K. P. R. S.
1590 ON YOUR DIAL

RAE JEAN DANCE STUDIOS
4917 EAST 24TH STREET

DR. R. G. RAHNER D.D.S.

RAY SMITH FORD SALES INC.
225 WEST 74 TERRACE

RAYTOWN PRESCRIPTION CENTER

TOM REARDON
1016 CENTRAL

REDEMPTORIST FATHERS

REDMOND PATTERN AND REDMAN
TOOL AND DIE WORKS
1215 WINCHESTER

REFRIGERATOR EQUIPMENT CO.
INC.
2400 GRAND AVE.

JERRY REINTJES
2517 JEFFERSON

RENE RYAN PERScription SHOP
101 NEW BROTHERHOOD BUILDING
FL 2-2900

RENNER'S SHOE REPAIR
4634 WYANDOTTE

RETAIL GROCERS ASSN.
4042 INDIANA

MARK RICHARD
RUSKIN HEIGHTS SHOPPING
CENTER

JUDGE ALBERT A. RIDGE

RONNIE'S SERVICE STATION
4250 ST. JOHN

ROST CHEVROLET CO.
10401 EAST INDEP. AVE.

ROTH JEWELRY
PRAIRIE VILLAGE
EN2-7072

ROWE'S SINCLAIR SERVICE
STATION
75TH & STATE LINE

GERTRUDE RUSSELL
O'FLAHERTY REALTORS
4117 BROADWAY

RUTH'S SHOP
7700 STATE LINE
EN 2-0200

RUTLEDGE OIL COMPANY
3261 ROANOKE RD.
VA 1-0772

RYAN METAL PRODUCTS
6424 CHARLOTTE

GEORGE W. RYAN
C. P. C. U. GENERAL INSURANCE
6211 OAK, EM 1-1212

JOHN RYAN'S BEAUTY MART

S

SALON OF BEAUTY
336 WEST 75TH ST.
HI 4-4475

SAM'S LIQUOR

SAVE-MORE DRUG
9124 E. 50 HIGHWAY
FL 3-1244

"RAYTOWN'S PRESCRIPTION
CENTER"

SCHEPERS & NOLAN INSURANCE
AGENCY
7143 WEST 80TH
OVERLAND PARK, KANSAS

SCHIBI PAINT AND SUPPLY CO.
7418 WORNALL RD. AND 8724
BLUE RD.
ART SUPPLIES AND GLOW CANDLE
WAX

W. G. SCHMIDT
7333 BROADWAY

SCHROER MANUFACTURING &
METAL STAMPING CO.
2221 CABBELL GRAND, 1-0488

SEAL-CORAZIN CONSTR. CO., INC.
5301 BRIGHTON
KANSAS CITY, MISSOURI

SECURITY MUTUAL LIFE
INSURANCE CO.
MARK KALB
LO 1-3140

SECURITY REALTY COMPANY
3835 PROSPECT

SERVICE ENVELOPE CO.
541 CENTRAL
KANSAS CITY, KANSAS

SHALINSKY REXALL DRUGS
3400 GIBBS RD.

SHAWNEE CLEANERS
11216 JOHNSON DRIVE
SHAWNEE, KANSAS

DR. JAMES A. SHEETS, D. C.
6030 TROOST

SHEIL FUNERAL HOMES

WILLIAM L. SHOEMAKER
720 EAST 3RD STREET

SIEBER'S RESTAURANT
6238 TROOST

SIENA CERAMIC TILE CO.
8211 WALNUT
EM 1-9511

SIDMON FUNERAL HOME
4316 TROOST

SILHOUETTE BEAUTY SHOP
1310 CENTRAL
DR 1-9212

JOE T. SIMONE
BROADWAY SHOE SHOP
7441 BROADWAY

DR. & MRS. A. B. SINCLAIR, JR.

SKYLINE REALTY
9644 SO. 71 HIGHWAY
SO 1-3344

SMITH SHOE SERVICE
8007 PASEO

DR. A. SOLODINO
ARGYLE BUILDING

SPALITTO DRUG STORE
2601 EAST 18TH STREET

SPECTOR-PRODUCE CO.
309 MAIN
KANSAS CITY, MISSOURI

STANDARD MILLING COMPANY

STANDARD PLUMBING & SUPPLY CO.
4108 TRUMAN RD.

STANDARD SERVICE STATION
P. V. K.
6901 MISSION ROAD

ST. CATHERINES GARDENS
1070 GRANDVIEW

STEELE CLEANERS
5925 TROOST

STEVE'S SHOES
SIX CONVENIENT LOCATIONS
EXCLUSIVELY CHILDRENS SHOES

ST. FRANCIS XAVIER

ST. JOHN'S C. Y. C.
548 BROOKLYN

ST. JOSEPH'S PARISH
FATHER ALVIN J. DEEM, O. F. M.

ST. MARY'S VARIETY SHOP
2512 EAST 31 ST.

ST. PATRICK'S PARISH
NORTH KANSAS CITY

ST. TERESA'S ACADEMY
CHORAL CLASSES

63RD STREET DRIVE-IN

STUART HALL COMPANY
2121 CENTRAL

STUDIO GIRL COSMETICS
CREATED FOR THE STARS AND
YOU
EN 1-1439

SOUTH SIDE BOOK AND
SUPPLY STORE
201 EAST 39 STREET
WE 1-9805

SOUTHSIDE FIREPLACE WOOD
AND PATIO
4623 MISSION RD.
KANSAS CITY, MISSOURI

JACK SUTTON

SUPERIOR METALLIC CASKET
COMPANY
612 NORTH 6

T

FRANK TALLMAN INSURANCE
AGENCY
18 EAST 11TH
VA 1-3800

TED TOBIN
DEADY CHEMICAL COMPANY
MA 1-3569

THERESA'S BEAUTY SALON
4811 JEFFERSON
VA 1-6866

TIP TOP CLEANERS
3402 1/2 STRONG

TIVOL JEWELRY CO.
220 NICHOLS ROAD
WE 1-5333

TOM AND SANDY

THE TOMPKINS CO.
G. W. "TOMMY" TOMPKINS
2317 CHARLOTTE

TOWN-COUNTRY FORD
111TH STREET
HICKMAN MILLS

TRAFFICWAY FOOD MART
3313 SUMMIT

GLORIA TRIPP GIFT SHOP
6215 OAK
JA 3-5890

TROOST FIREPLACE CENTER
5508 TROOST
EM 1-4445

TROOSTWOOD PHARMACY
5045 TROOST

TROOSTWOOD BEAUTY SHOP
5544 TROOST

DOCTOR P. C. TURNER
1805 VINE STREET

COMPLIMENTS OF
MR. AND MRS. J. TUTORINO

TYNER AND MURPHY,
COMMERCIAL PHOTOGRAPHERS
210 WEST 8TH STREET

U

UNIVERSAL INTERNATIONAL FILMS
1700 WYANDOTTE

V

COMPLIMENTS OF
MR. AND MRS. A. F. VAIL

VAN'S SELF SERVICE SHOES
3200 MERRIAM LANE

VAN'S SUPER MARKET
10 HIGHWAY AT NIAMAN ROAD
SHAWNEE, KANSAS

COMPLIMENTS OF
VESS BEVERAGES

VICTORY CAB COMPANY
1032 MINNESOTA

STEVE VOGLI REALTORS
203 E. GREGORY
JA 3-3500

W

WALDO GRAIN COMPANY
SEEDS AND FERTILIZERS

WASSON FABRIC MFG. CO.
2920 McGEE TRAFFICWAY

WEAVER AUTOMOTIVE SERVICE
EQUIPMENT
LARRY STADLER SO 1-7211

WESTBROOK VARIETY STORE
7502 TROOST

WESTERN REG. DITTO, INC.
1664 BROADWAY

WESTPORT GLASS AND PAINT
425 WESTPORT ROAD

WESTWOOD PLAZA BEAUTY
SALON
2500 JOHNSON DRIVE
SK 1-3101

GEO. H. WEVER, INC.
1219 MAIN

E. EARL WHALEN

WHB RADIO
11TH FLOOR PICKWICK
HOTEL

FRANK WILSON INSURANCE
6109 BLUE RIDGE BLVD.
RAYTOWN

Y

L. YUKON & SONS
407 WALNUT
KANSAS CITY, MISSOURI

Z

ZEFF'S JEWELRY STORE
306 WEST 9TH STREET

ZENA KEARNEY-ORGANIST
FOR KANSAS CITY
ATHLETICS



PERSONAL PATRONS

REVEREND NOMAN ROTERT
 REVEREND FRED J.
 REVEREND JAMES BECHTEL
 REVEREND J. J. DeMARIA
 REVEREND MICHAEL GRACE
 REVEREND RALPH L. KAISER

REVEREND JOHN E. LEITNER
 REVEREND JERRY W. MAHONEY
 REVEREND JOSEPH A. NADEAU, O. P.
 REVEREND DONALD E. STURM
 REVEREND WILLIAM VON ARX

ABBOUD, MR. AND MRS. W. G.
 ABERER, TOM
 ADAMS, R. E.
 A FRIEND
 ALBRIDGE, ROSE
 ANDERSON, MR. AND MRS.
 PHILLIP
 ANTONELLO, MR. AND MRS. JOHN
 ARMATO, MR. AND MRS. S.
 BAHL, MR. AND MRS. HARRY
 BAMBIC, MR. AND MRS. A. F.
 BARBER, MRS. EMMA
 BATY, MR. AND MRS. JOHN
 BAUER, MR. AND MRS. TONY
 BECK, MR. AND MRS.
 BENNETT, MISS SALLY
 BERKEY, MR. AND MRS. E. R.
 BERNHARDT, MR. AND MRS. A. J.
 BERNHARDT, MISS BARBARA
 BERTELSEN, MR. AND MRS. T. E.
 BIERSMITH, ED
 BILL'S SERVICE
 BLASCO, MR. AND MRS. ALFRED
 BOND, MRS. H. R.
 BOOKER, MISS BETTY
 BOOKER, MR. AND MRS.
 CLIFFORD
 BOWMAN, CHARLES AND KAROL
 BOYD, MR. AND MRS. GEORGE
 BOYLE, MR. AND MRS. BILL
 BRADSHAW, MR. AND MRS.
 CLIFFORD
 BREHMER, JOE
 BROWN, MR. HARVEY D.
 BUCHANAN, VERLON J.
 BUNDSCHU, MR. AND MRS.
 WILLIAM B.
 BYRNE, MR. AND MRS. DAN
 CANTRELL, MR. AND MRS.
 CLIFFORD W.
 CAPRA, MR. SAL
 CAPRA, MR. GEORGE
 CARLSON BAKERY
 CARTER, MR. AND MRS. F. F.
 CASTOR, JILL
 CAULEY, TOM
 CENTER, PATTY
 CHIMIANTI, DR. JOHN F.
 CHRISTENSON, SUE
 CHICK AND CAROL
 CHURAN, MR. G. C.
 CHURCHMAN, MR. AND MRS. J. R.
 CLARKSON, MRS. EDWIN E.
 CLAWSON, REX AND COMPANY
 COLE, MR. AND MRS. MICHAEL
 COLEMAN, MR. AND MRS.
 ROBERT J.
 COMPLIMENTS OF A FRIEND

CONNELLY, MR. AND MRS.
 PHILIP J.
 CONROE, MR. AND MRS. FRED T.
 COUMBE, MR. AND MRS. FRED
 CRAIG, JO ANNE
 CRAIG, MRS. BERNARD D.
 CRESTWOOD CARD AND GIFT SHOP
 CRUISE, MR. AND MRS.
 CUSACK, MR. AND MRS. JOHN
 DALTON, MR. AND MRS. GEORGE
 DANZO, MISS GAYLE
 DARRAH, MICHAEL
 DARRAH, MRS. C. E.
 DAVIES, MRS. DON P.
 DAVIS, FRANK
 DAVIS, DR. AND MRS. JAMES C.
 DAVIS, O. L.
 DAY, LINDA KAY
 DAY, MR. AND MRS. J. F.
 DeCOURSEY, TOM
 DeFEO, MARY PATRICIA
 DeFEO, MR. AND MRS. RALPH
 DeFEO, MRS. C.
 DEHNER, MR. AND MRS. C. V.
 DELANEY, MR. AND MRS. JOHN
 DEVANEY, MR. AND MRS. J. B.
 DiBELLA, MICHELINE
 DIGIOVANNA, MR. AND MRS. F. A.
 DIERKING, GEORGE COMPLIMENTS
 OF
 DONAHUE, MR. AND MRS. WM. H.
 DONOVAN, JACK
 DOWNER, MISS ROSEMARIE
 DOWNEY, HUGH
 DUFFY, JOHN P.
 DUNPHY, MR. AND MRS. H. A.
 EAGAN, MR. AND MRS. CHARLES
 EGENDER, JANE
 ELLSWORTH FLOWER SHOP
 ENNA, DR. AND MRS. CARL
 ENNA, MISS ROSE
 ENNA, MR. AND MRS. SAM C.
 ESKEW, MRS.
 FAGAN, MR. AND MRS. WM.
 FAHLSTROM, KATHY
 FAIRWAY PLUMBING AND HEATING
 FARREN, MRS. MARTHA
 FETTERS, MRS. MARTHA
 FETTERS, MR. AND MRS.
 WILLIAM JR.
 FISHER, MR. AND MRS. HAROLD B.
 FITTS, MR. AND MRS. JAMES R.
 FOGARTY, KATHY
 FOGARTY, MR. AND MRS. JOHN
 FOSTER, MRS. EMMA
 FRANKLIN, BEN STORES
 FREY, LANTI
 FRISCH, MR. AND MRS. J. L.

FUNDIS, MR. AND MRS. GEORGE W.
 GAINIEY, FRANCES
 GALIANO, ANNA MARIE
 GARREY, MR. AND MRS. JAMES
 GEORGE AND KAREN
 GERAGHTY, MR. AND MRS. PAUL
 GIANGRECO, RONNIE
 GIESEL, JOE
 GIST, DR. AND MRS. WILLIAM
 GLEASON, MR. AND MRS. THOMAS
 GRAHAM, MR. AND MRS. L. A.
 GRAY, HELEN JANE
 HAAKE, CHARLES AND SONS INC.
 HANNAH, MR. AND MRS. GEORGE
 HARRIS, MR. AND MRS. M. B.
 HART, MR. AND MRS. A. J.
 HASKINS, TOM PRESCRIPTION
 PHARMACY
 HEIMAN, VIC AND FRED
 HERRICK, MRS. JEWELL W.
 HIGGINS, GEORGE
 HILLARD, MRS. K. L.
 HIRTZ, MR. AND MRS. RAFAEL
 HODES, MISS MARTHA M.
 HOFFMAN, MRS. KATHRYN QUIRK
 HOGAN, MISS VIRGINIA
 HOGSETT, MR. AND MRS. JOSEPH R.
 HOGSETT, MRS. W. S.
 HOLLAND, MR. AND MRS. E. J.
 HOOD, JOYCE
 HOOD, JOE
 HOOPER, JACK
 HOMESEKERS SAVINGS AND LOAN
 HOPE, MIKE
 HOPE, MR. TOM
 HOPE, MRS. TOM
 HOSKINS, MR. AND MRS.
 JOSEPH A.
 HOULIHAN, CATHERINE
 HOULIHAN, JOHN
 HUBBELL, CARL PRINTING
 HUGHES, MR. AND MRS.
 FRANK A.
 HUGHES, MR. AND MRS. PAUL J.
 HUGHES, MR. AND MRS.
 JOSEPH R.
 HUNTER, RALPH
 HUTTENMILLER, MRS. B. L.
 INDIAN VALLEY STABLES
 JENSON, MR. AND MRS. O. C.
 JOHNSON, MRS. J. L.
 JONES, ROBERT WATSON
 KAPPLEMAN, MR. AND MRS.
 MARTEN
 KEELING, MRS. JOHN
 KELLEY, LORETTA J.
 KELLY, RAY
 KENNEDY, MR. EARL D.

KENT, MISS SUZY
 KERWIN, MR. AND MRS. V. S.
 KING, MR. AND MRS. HARLOW B.
 KIRBY, KEN
 KLEIN, MRS. PAUL M.
 KLEIN, MR. PAUL M.
 KOURY, MR. AND MRS. PHIL
 KRISTOF, MRS. E. G.
 LaDOUCIAR, RONNIE
 LAMB, MR. AND MRS. JOHN L.
 LANCASTER, MR. AND MRS. H. R.
 LANCASTER, MARY
 LANGDON, MRS. DON
 LAYNE, LINDA
 LAYNE, SHIRLEY JEANNE
 LEE, MR. AND MRS. B. G.
 LEE, MR. AND MRS. J. J.
 LEITER'S
 LIPOVITZ, MR. FRANK
 LOFTUS, MR. AND MRS. PATRICK A.
 LOWE, MR. AND MRS. SAM E.
 LYNCH, MR. AND MRS. JOSEPH
 LYNCH, MR. AND MRS. RICHARD
 MAGGIO, ANITA
 MAGGIO FAMILY CLUB
 MAGRATH, CARMELLA E.
 McGRATH, MARY DELORES
 MAHONEY, MR. AND MRS.
 MALLON, MRS. ANN
 MALONE, MAUREEN
 MANZELLO, MRS. M. A.
 MANZELLO, MR. MIKE
 MARTIN, MARGIE
 MARTIN, MR. AND MRS. HAROLD L.
 MARVIN'S TOY AND CAMERA SHOP
 MARY AND EDDIE
 MAURICE COAT AND SUIT MSG.
 CO.
 MAX'S DRIVE-IN, COMPLIMENTS
 OF
 MAY'S
 MAY, MRS. EDMUND S.
 MAYER, TERRY BETH
 McCARTHY, MR. AND MRS.
 EDWARD
 McCONNELL, MR. AND MRS.
 WILLIAM
 McCORMACK, MRS. GEORGIA
 McCORMICK, MR. AND MRS.
 CLIFFORD
 McCOSKRIES, THE
 McGRAW, MR. AND MRS. W. J.
 McKINLEY, MR. AND MRS. F. J.,
 JR.
 McLINLEY, MRS. GEORGE
 McKNIGHT, BILL FAMILY
 McMAHON, MISS MARY C.
 McMAHON, MRS. NELLIE
 McMAHON, MR. AND MRS. JOHN H.
 McMAHON, MR. AND MRS. W. J.
 McMICHAEL, MARY LOU
 McMILLIAN, MR. JOSEPH
 McNELLIS, MR. AND MRS. MAURICE
 McQUEENY, MR. AND MRS. JAMES
 MEAGHER, MR. AND MRS. ROBERT J.
 MEINERS, ART MARKET
 MEINERS, MR. AND MRS. WILLIAM
 MELZAREK, VIRGINIA
 MENZE, MR. AND MRS. M. E.
 MERLI, MR. AND MRS. C. L.
 MILICI, MR. AND MRS. TONY V.
 MILLER, CARONYN
 MINIACE, MR. AND MRS. JOSEPH
 MOLINARIO, JOSEPH M., D. D. S.
 MONACO, MRS. JENNIE
 MONACO, MR. AND MRS. JAMES
 MONACO, VICTOR
 MUENKS, MR. AND MRS. EARL P.
 MULCANY, MR. AND MRS. J. F.
 MULLEN, MR. AND MRS. J. R.
 MULROY, PEGGY
 MUSICK, MARY JO
 NELSON, MR. AND MRS. HARRY C.
 NERO, J. J.
 NETTERS, MRS. MARTHA
 NORTHROP, JANE
 NOTHNAGEL, MR. AND MRS. CARL
 OADES, MR. AND MRS. WALTER H.
 O'CONNOR, MR. AND MRS. J. M.
 O'CONNOR, MRS. JOHN
 O'NEILL, KATHY
 ONG, MR. AND MRS.
 ORFORD, JOSEPH P.
 ORSCHELN, MRS. A. G.
 OVIATT SHOE STORE
 PALERMO, MR. AND MRS. ANTHONY
 PASQUALINO, MR. AND MRS. D.
 PASSLER, MR. AND MRS. J.
 PEOPLE'S REAL ESTATE
 PHILLIPS, TOM
 POLEN, MR. AND MRS. ROBERT
 POWERS, MARY JO
 PRICE, MRS. BESSIE
 PROBERT'S MUSIC SHOP
 PUTTHOFF, MR. AND MRS. M.
 QUIRK, MRS. NELLIE
 RABB, MR. AND MRS. JOSEPH F.
 REAM, MRS. DELLA
 REID, ETTA A.
 REID, MR. AND MRS. C. W.
 RHINEHART, MR. HOWARD
 RICE, MARGARET
 ROSE, LEE
 RUDER, EDWARD H. FAMILY
 RUHLMAN, MR. H. E.
 RYAN, ESTHER
 RYAN, JOE
 RYAN, MR. AND MRS. DONALD
 RYAN, MR. AND MRS. JOHN P.
 RYAN, MR. AND MRS. R. J.
 SACHEN, MR. AND MRS. L. P.
 SANTEE, MR. AND MRS. W. M.
 SATER, MR. AND MRS. DAVID E.
 SCALOW, MR. AND MRS. T. G.
 SCANLON, MR. AND MRS. T. G.
 SCHIBI PAINT AND SUPPLY
 COMPANY
 SCHILD, MR. AND MRS. FRED
 SCHLOEGEL, MR. AND MRS.
 ROBERT
 SCHMANSKI, MR. AND MRS. F. E.
 SCHMANSKI, MR. AND MRS.
 FAYMOND F.
 SCHORGL, MR. AND MRS.
 CHARLES L.
 SCHULTE, TONI
 SELZER, MR. PAUL
 SERRONE TWINS, THE
 SHEEK, BUD
 SHEEK, MRS. RUTH J.
 SIGOURNEY, SALLY
 SIGOURNEY, WAYNE
 SIMMS, MR. AND MRS. DENNIS
 SIMMS, MR. AND MRS. JOSEPH E.
 SINGER, MR. AND MRS. K.
 SISTER JEAN ANTHONY
 SLEZAK, TOMMY
 SMART, MR. AND MRS. JAMES M.
 SMITH, BILL AND CHRIS
 SMITH, MAUREEN
 SMITH, MR. AND MRS. EDMOND B.
 SMITH, MR. AND MRS. H.
 SMITH, MR. AND MRS. WM. T.
 SNITZMIER, MR. AND MRS. JOHN J.
 SOBALVARRO, CAROL
 SODEN, MRS. E. W.
 SODEN, MRS. W. ETTA
 SOOY, MISS CORNELIA JANE
 SPRUILL, MISS FRANCES
 SPRUILL, MR. LEE
 STACK, MARGARET AND FRANCES
 STECK, MISS BARBARA
 STEPHENS, MR. AND MRS. G. E.
 FAMILY
 STEPHENSON, SALLIE AND JAN
 STEPHENSON, MR. AND MRS.
 TOM
 STEVENSON, RUTH GALLERIES
 STOCKDALE, GEORGE L.,
 PAINTING
 STOFFLE'S BARBER SHOP
 STONE, MR. AND MRS. CHARLES A.
 STRAYER, JOAN
 STRAYER, KATHY
 STRAYER, MR. AND MRS.
 BERNARD B.
 STRAYER, MR. AND MRS. P. M.
 ST. TERESA'S AIR FORCE ACADEMY
 SULLIVAN, MR. AND MRS. F. J.
 SULLIVAN, MR. AND MRS. JOHN E.
 SUTTER, MR. AND MRS. JOHN R.
 SWANSON, MR. AND MRS. AL
 SWARTZ, MRS. JOHN J.
 SWIFT, MR. AND MRS. JOSEPH
 SWITZER, MR. AND MRS. LEON
 SUN OF TUNDER
 COMPLIMENTS OF T. A. H., H.
 B.B.C., A.U.A.
 THOMPSON, A. O. LUMBER
 COMPANY
 THOMPSON, MRS. MAUDE E.
 TERESA AND SUE
 TOBIN, MR. AND MRS. JAMES W.
 TOWNSEND, MRS. M. E.
 TROUG, MR. AND MRS. MORTON
 TURNER, MR. AND MRS. LOUIS L.
 VICK, MR. AND MRS. RALPH
 WALDO CARD AND GIFT SHOPPE
 WALKER, DICK
 WALLACE, MR. RUSSELL
 WATERS, MR. AND MRS. JOHN J.
 WELLING, DR. FRED J.
 WHALEN, MR. EARL, JR.
 WIEDEMAN, MR. AND MRS. TED
 WIESNER, BARBARA
 WILLIAMS, J. D.
 WILLIAMS, MARGARET
 WILSON, MARIBETH AND JON
 WRIGHT, MR. AND MRS. MILTON
 WYATT, LEONARD
 YONTZ, PATRICIA
 ZAHNER, MR. AND MRS. VICTOR N.
 ZINK, MR. AND MRS. LAWRENCE C.

AUTOGRAPHS

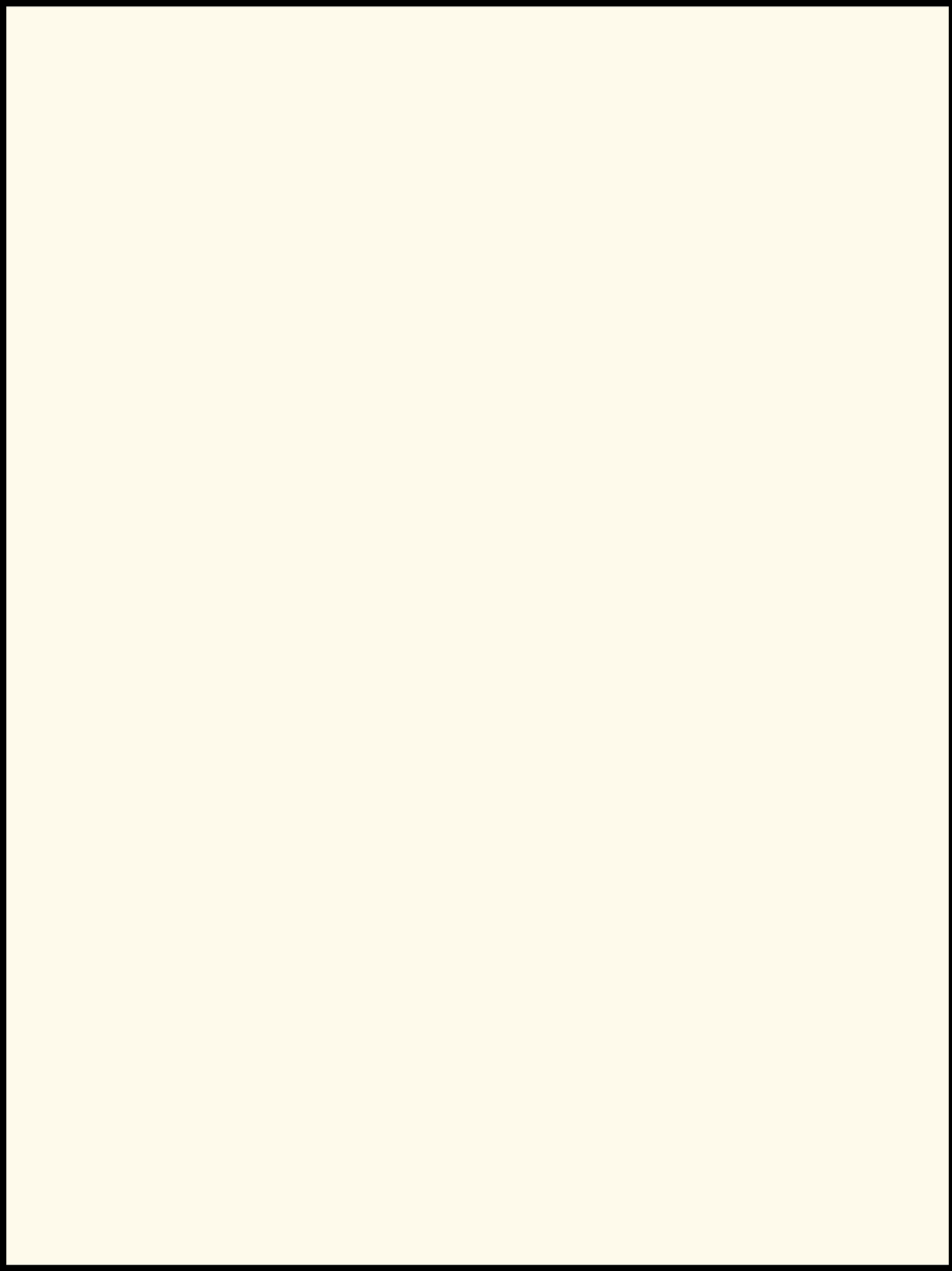
HARDIN AND STOCKTON
Have the homes
5600 Johnson Drive - He 2-6200
6310 Main - De 3-9000

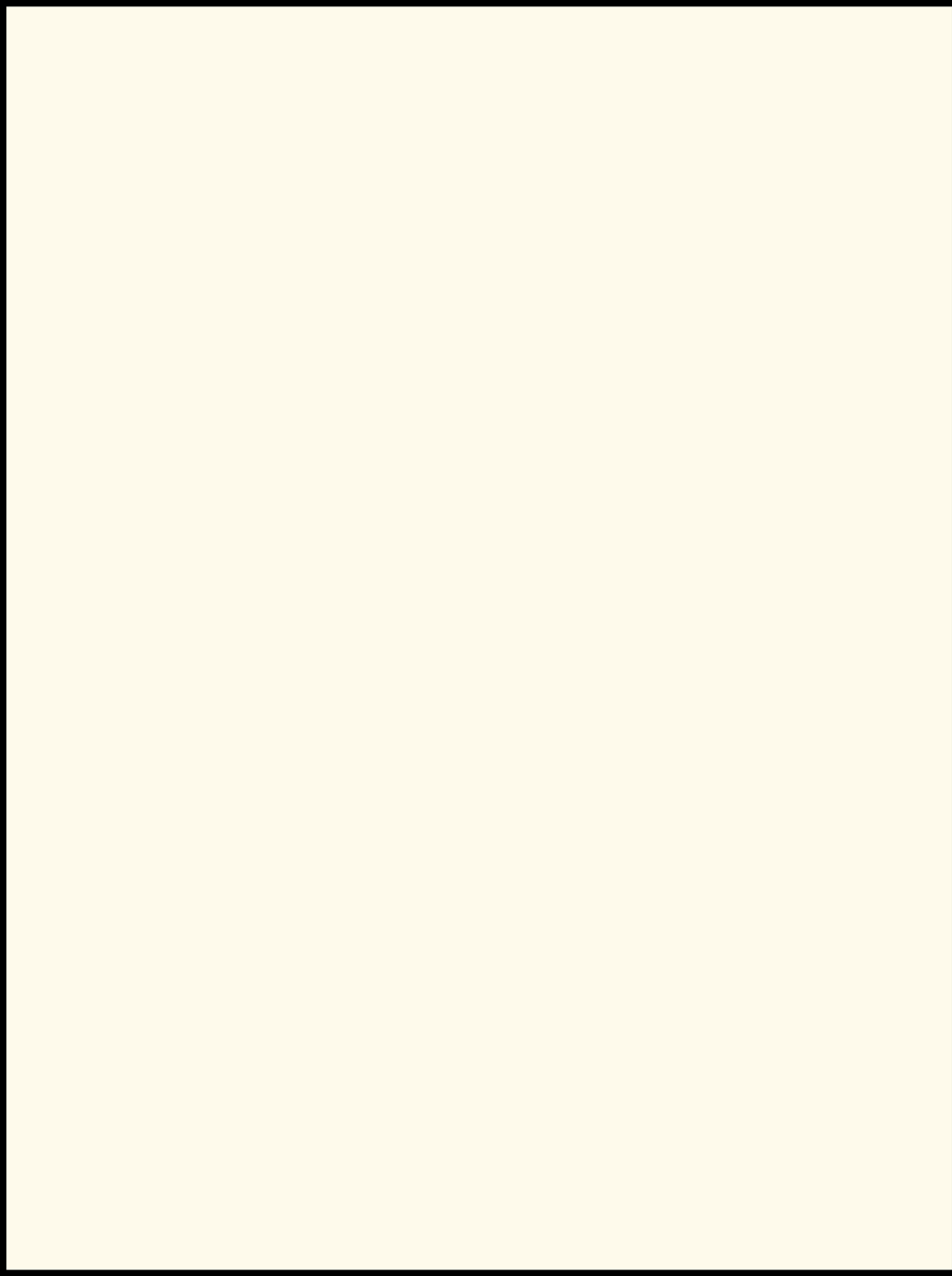
Compliments of
JOSEPH P. McLAREN - Master Flex Championship
By - Master-Crete Corporation
American Royal Building

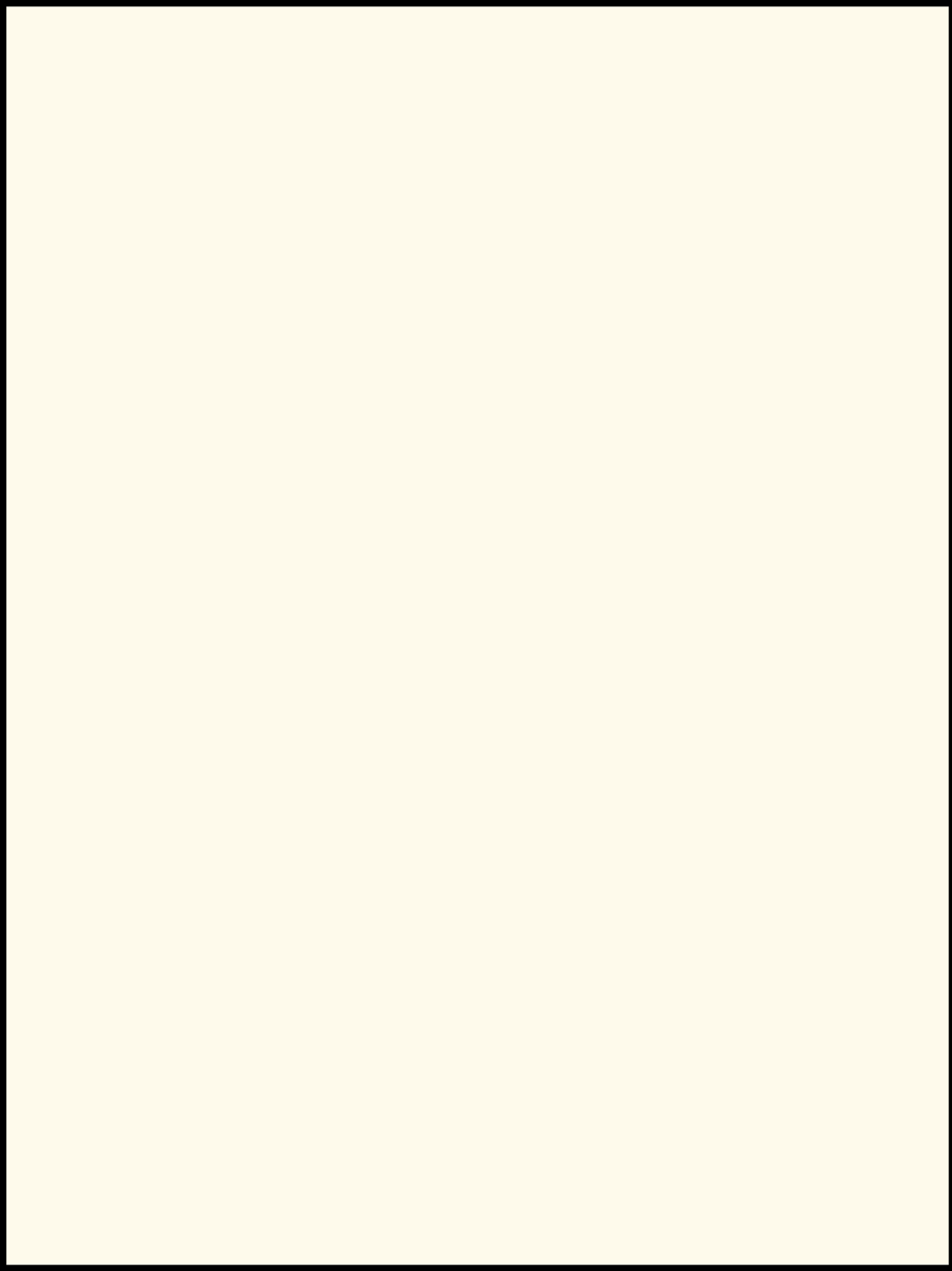
AUTOGRAPHS

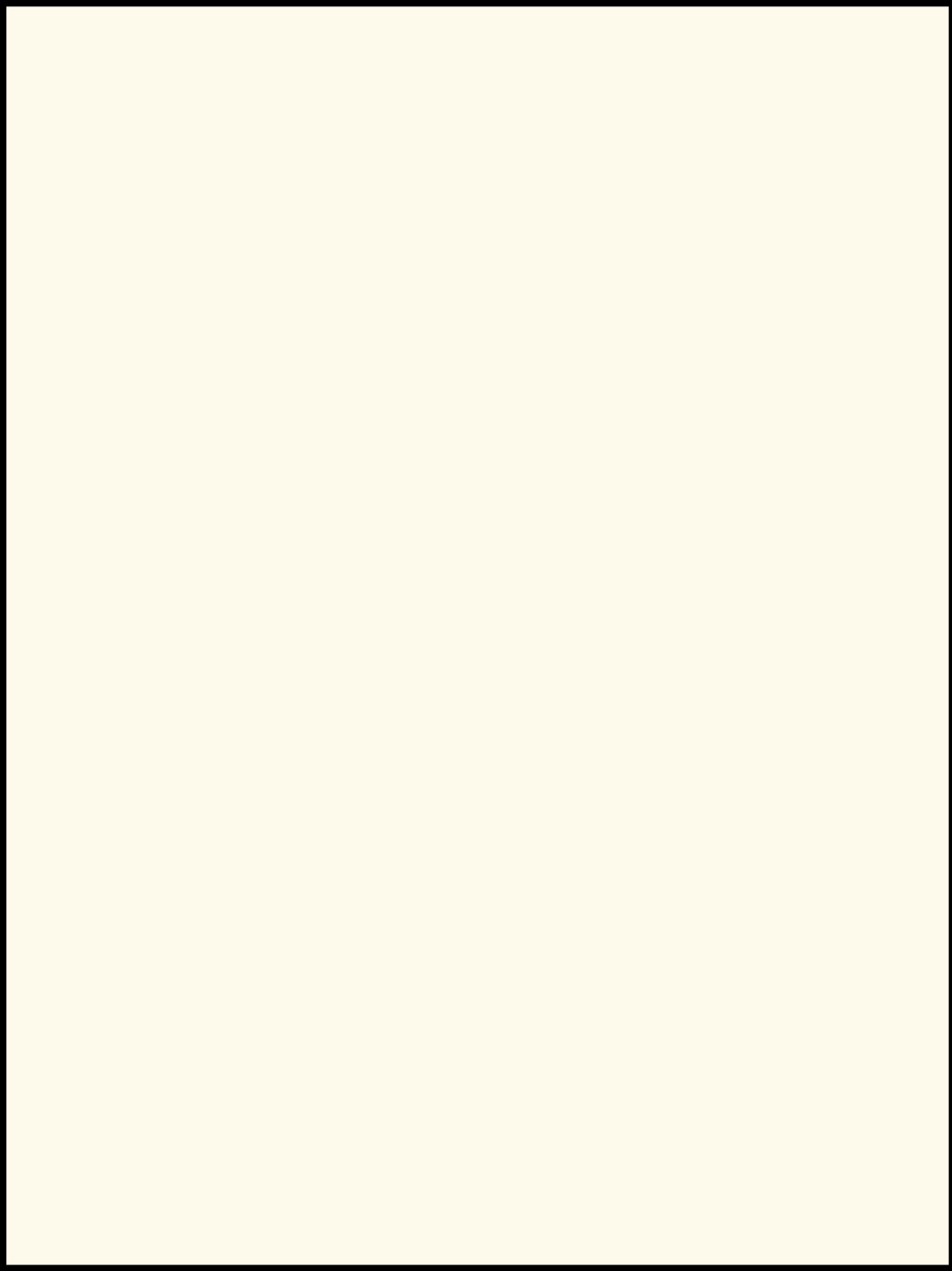
HARDIN AND STOCKTON
Have the homes
5600 Johnson Drive - He 2-6200
6310 Main - De 3-9000

Compliments of
JOSEPH P. McLAREN - Master Flex Championship
By - Master-Crete Corporation
American Royal Building



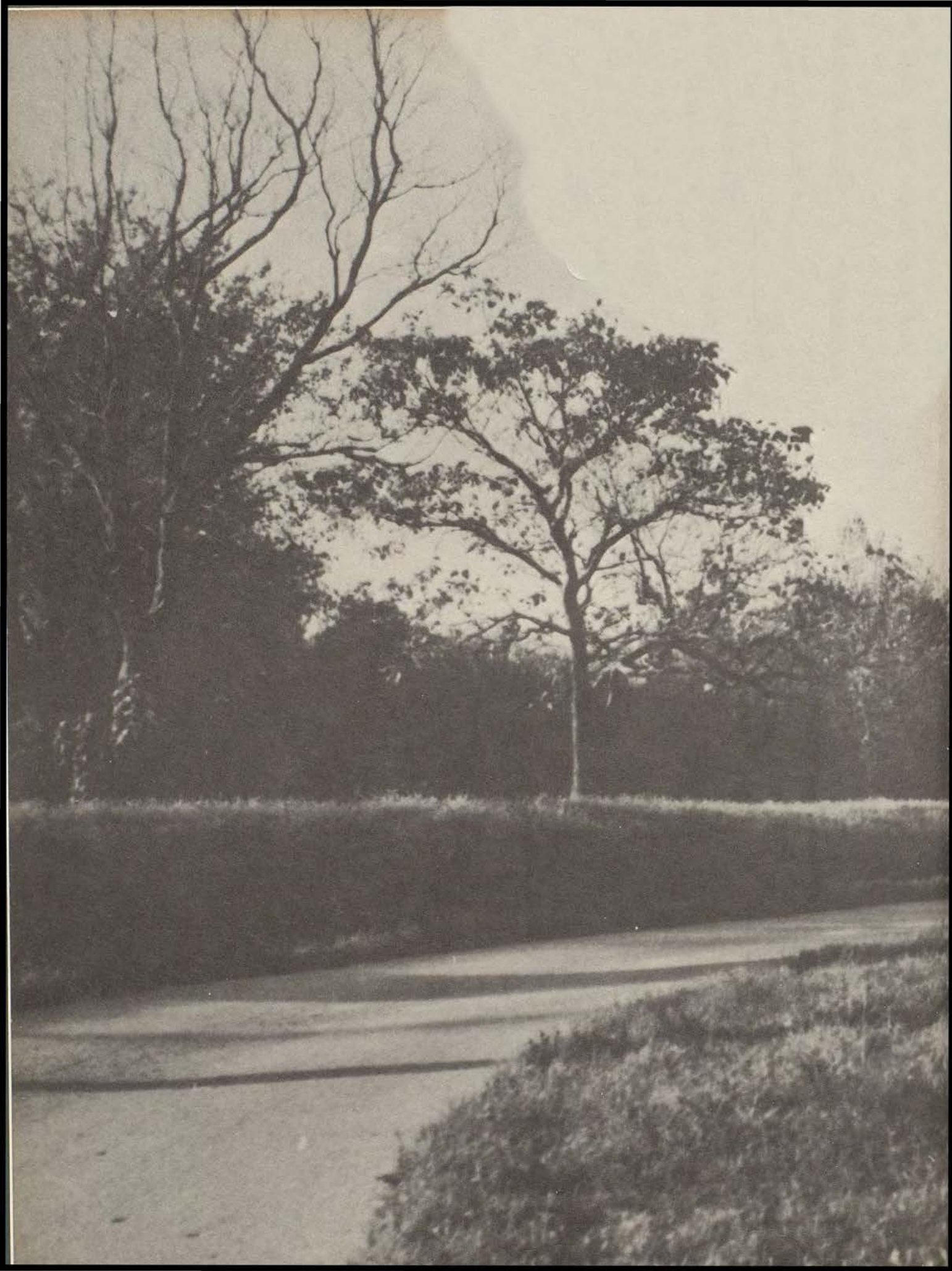






Myers
YEARBOOKS
in depth

PACEMAKERS
OF QUALITY



ACADEMY GIRL



This year Jesdon Haake was chosen by the faculty for the cherished honor of Academy Girl. Jesdon was chosen for her loyalty, leadership, outstanding character, and scholastic ability.

HENRY RUYSSER
7500 E. 12 Street

Compliments of

MATT BOWEN
1201 Manchester

"TONIGHT" OUR PROM NIGHT



FASENMEYER CHEVROLET, INC.
9617 East 50 Highway
Raytown, Missouri

Compliments of

C. C. CALDWELL, Opticians
Bryant Bldg. 4709 Central
743 Minnesota

Queen Barbara receives her regal bouquet "with a flourish."



(BELOW): Juniors and Seniors dance to the excellent music of Les Copley.



COLUMBIA NATIONAL BANK
921 Walnut

Compliments of

GAUSNELL-DOHERTY REALTORS
5000 Johnson Drive He 2-5850

R
I
N
G
N
I
G
H
T



(LEFT): Sister Marie deLourdes presents Donna Lockert with the coveted Class ring, while Kathy Fisher and Kathy Fogarty assist.



(BELOW): The Junior Class entertains parents and friends with several lovely vocal selections. Sister Mary Judith directs.

Father DeMaria, junior Religion instructor, blesses the Class Rings.



SEAL-CORAZIN CONSTRUCTION CO., INC.
5301 Brighton Avenue
Compliments of

BEYERS CRUSHED ROCK
90th and 71 Highway



The STA spectators relax while waiting for the next event.

F
I
E
L
D



Barbara Merli gracefully flies over for first place in high jump.



Jeanne Dehner and Susie Wilson for the second year in a row run to receive their blue ribbon.

D
A
Y



Fran Whitaker works hard to help her class by winning High Point Girl -- Congratulations Fran!

JUSTRITE SUPER MARKETS, INC.
9021 East 50 Highway

Compliments of

FRED RODE FINE CLEANING
4024 Rainbow, 5010 Linden

FATHER



DANCE

DAUGHTER



The Sodality again sponsored a Father-Daughter Dance. Here Mr. Hughes and his daughter Lindsay show their ability in the dance contest.

The fathers and their daughters compete in a relay race.



INDUSTRIAL PAPER STOCK
136 Main Street

Compliments of

PLAZA BOWL, INC.
430 Nichols Road



With the approach of Spring, the Athletic Club sponsored the Spring Dance. The theme of the dance was carried through by the use of flowers in the center of the floor and around the encircling walls



SPRING DANCE

RIEDER'S FOOD CENTER
8744 Blue Ridge Road

Compliments of

FAMOUS BAR AND COCKTAIL LOUNGE
1211 Baltimore BA 1-7272

FASHION
SHOW



The Academy Glee Club sang popular selections from Victor Herbert Songs at the annual College-Academy Fashion Show on May 18.



Kathy Porn, Sue Wesley and Betsy Bowes admire Judy Miniace's dress and her modeling position.

Mary Ann Tobin prepares for the wedding while her bridesmaid Julie DiGivonna and flower girl Chris Serrone look on and Diane Ghent and Carol Stanley give a helping hand.



Compliments of

ANTONIO'S PIZZERIA
Carry out and Delivery
Main at 43rd Je 1-4444

ZARDA BROTHERS QUALITY DAIRY
"Farm Fresh Dairy Foods"
10618 West 63rd Street

MAY DAY



The whole school participated in the May Day procession.

This year a regal touch was added to our May Crowning by the presence of the De La Salle Cadets forming a Saber Arch for the Queen and May Court.



Our Queen, Jesdon Haake, has the honor of Crowning our Blessed Lady.

ARTCO INDUSTRIAL CO.
1005 Grand Avenue

Compliments of
ALTMAN-SINGLETON & COMPANY
114 West 10th Street

HONORS



Virginia Nelson (RIGHT) is the Valedictorian of the Class of 1960. With this honor Virginia is awarded a four-year scholarship to the College of St. Teresa. Kathleen Halcro (LEFT) is second in the class in scholastic average, and is named Salutatorian.

Our four scholarship winners are: Linda Pfeiffer, University of Kansas City; Kathleen Halcro, National Merit Finalist; Virginia Nelson, College of St. Teresa; Genie Sullivan, voice scholarship, College of St. Teresa.



Compliments of

BEACON PRINTING AND PUBLISHING CO.
1825 Harrison Ave. Ba 1-5660

CONTRACTOR'S SUPPLY COMPANY
620 East 18th Street Ba 1-5760



(LEFT): Mary Lee, out-going Student Council President, passes the school banner, along with her responsibilities, over to the new president, Marie Gainey.

(BELOW): Our three Class Day medal winners: Julie DiGiovanna, Perfect Attendance; Kathleen Halcro, Math; Virginia Nelson, Religion.



(BELOW): One of the highlights of Class Day is the distribution of various honors won during the year.



C
L
A
S
S

D
A
Y

HANSON MOBILE HOMES, INC.
8660 E. New 40 Highway
UN 1-0333

Compliments of

MIDLAND HARDWARE COMPANY
71st & Prospect
Independence

31st & Prospect
Truman Corners



Solemn expressions reveal the thoughts of the graduates of 1960 as they listen to their commencement address.



With a smile and a 'thank you' Mary Kay Abboud receives her diploma from Monsignor.



On behalf of the class of '60, Teresa Manzello gives an engraved medal to Monsignor McDonald in remembrance of his 50th year of presenting diplomas to S.T.A. graduates.



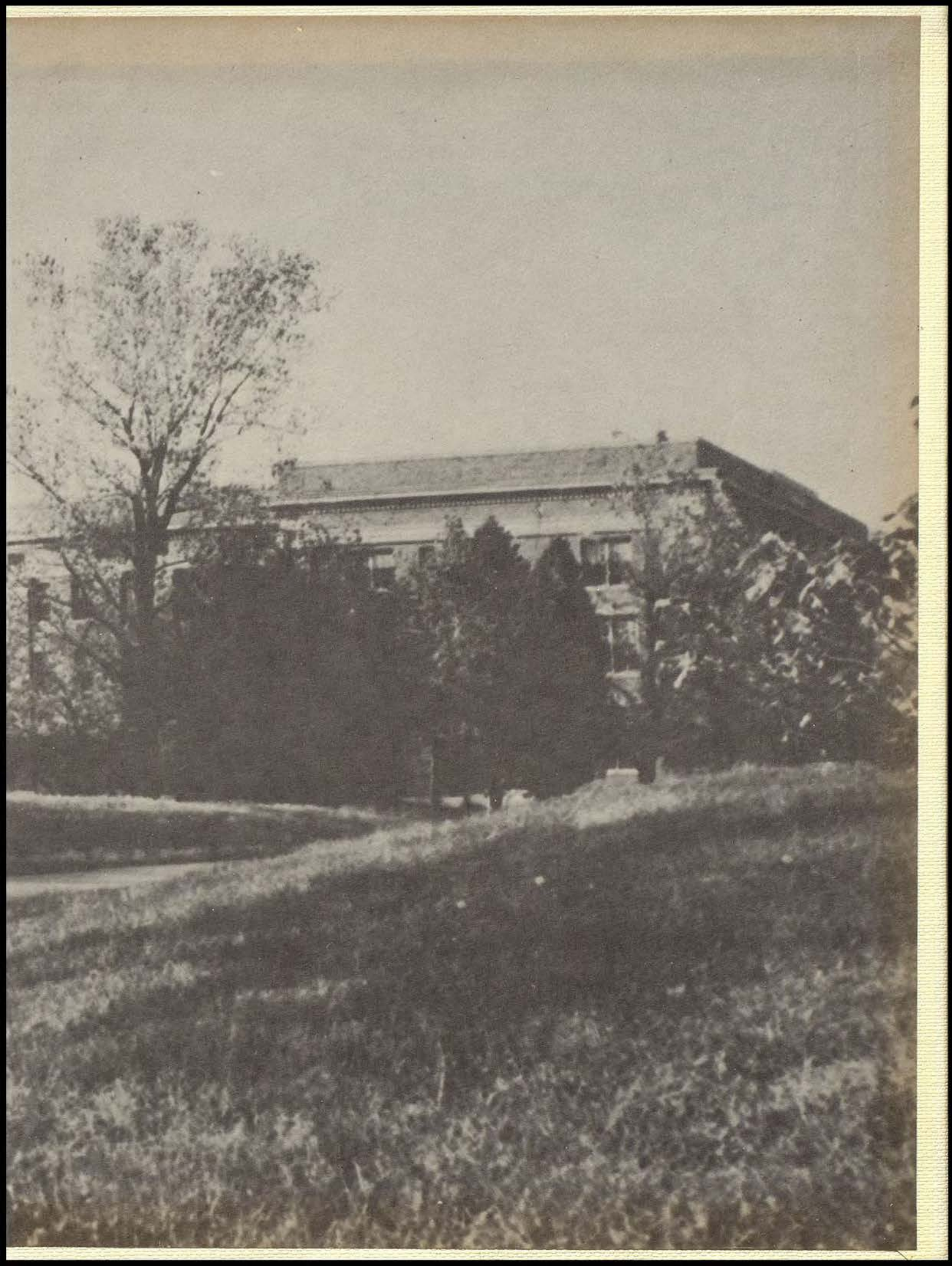
A breakfast was given by the faculty and served by the juniors for the graduates and their mothers on the morning of their graduation day.

GRADUATION

ST. TERESA MOTHERS'S GUILD
College and Academy of St. Teresa

Compliments of

CHRIST THE KING CHURCH
85th and Wornall





MYERS & CO.
TOPEKA, KANSAS