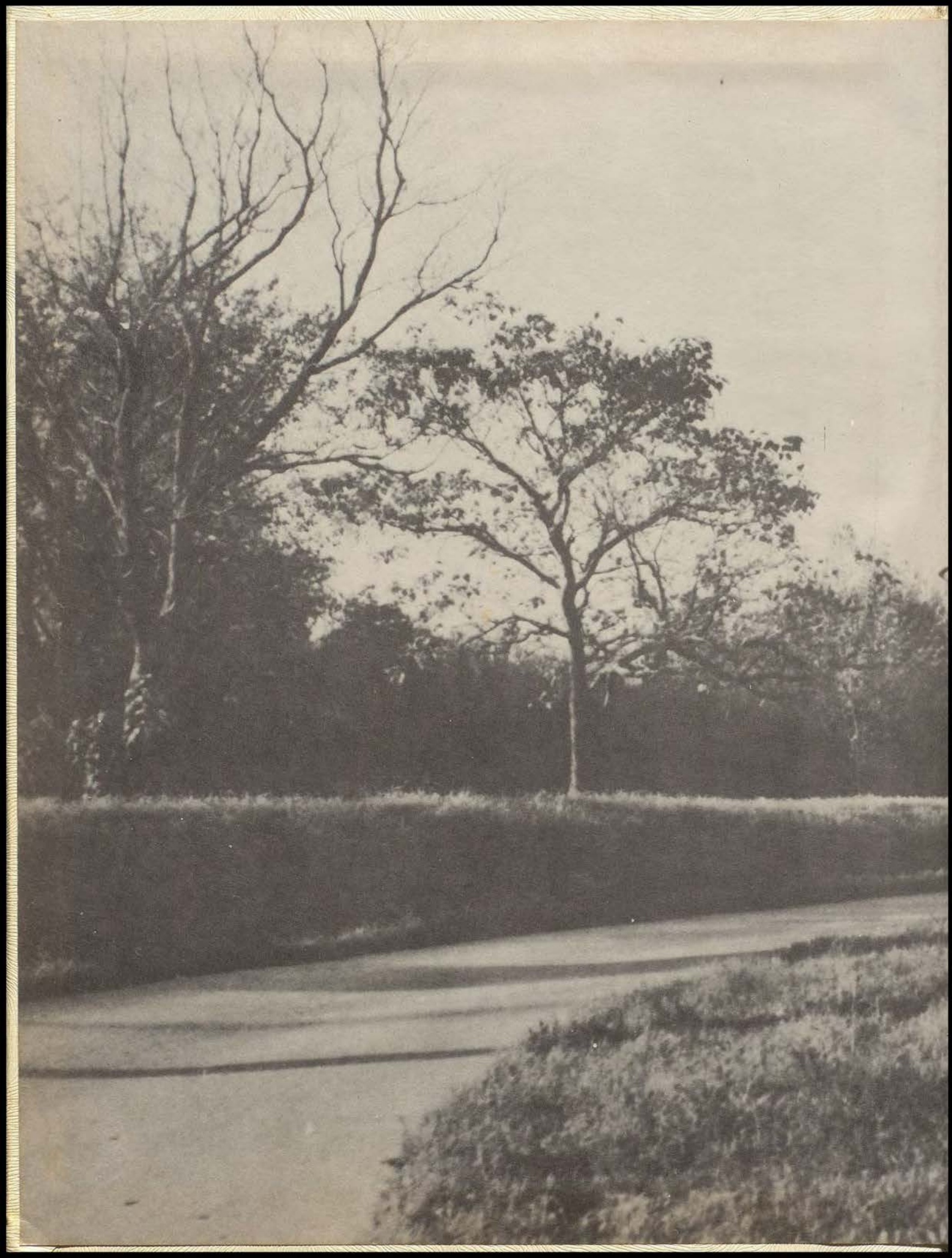
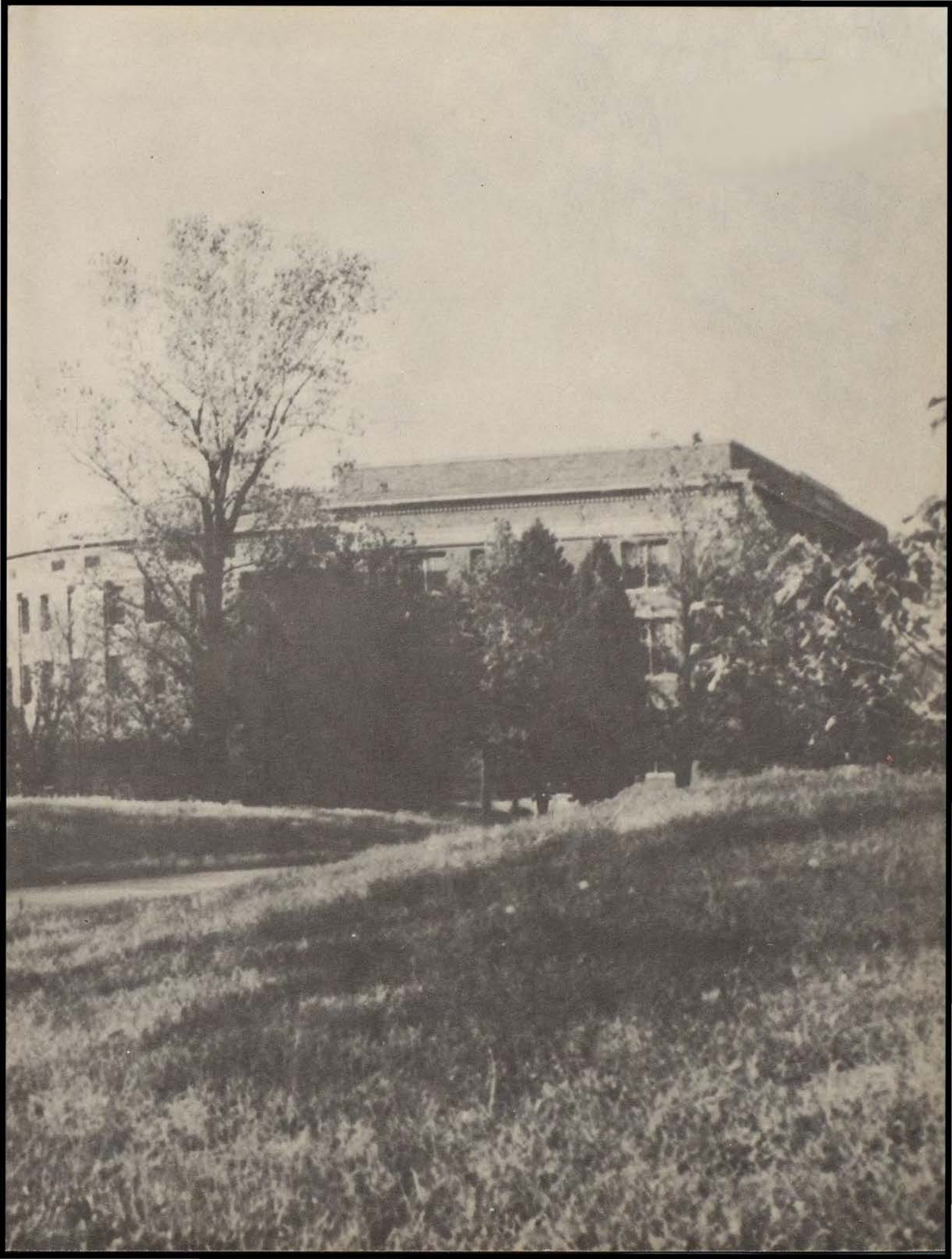


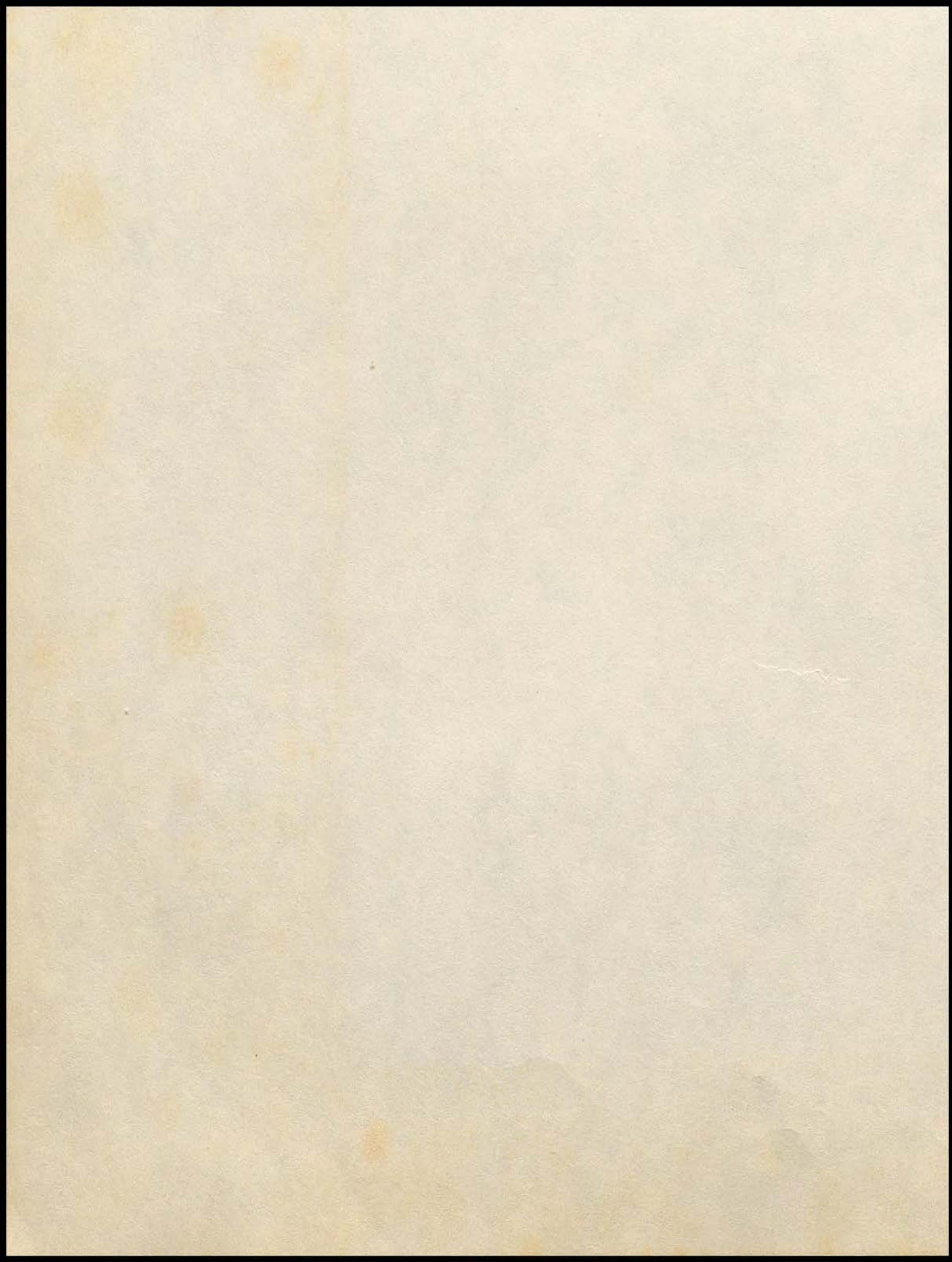


nineteen hundred and fifty six

The Avila







The Avila

Presented by
The Senior Class of 1956
ST. TERESA'S ACADEMY
Kansas City, Missouri

Loved STA

We sa-lute our Alma Ma-ter and cite her

Dedication

prai-ses strong! the happi-ness we've found here now echoes
We, the Senior Class of Saint Teresa's Academy, lovingly
dedicate the Avila of nineteen hundred fifty-six to our Alma

in our **Song. Loved S T A** We are loyal
Mater, within whose walls we have found the educational
advantages, the spiritual guidance, and the lofty ideals which

have brought us, year by year, closer to our goal of Christian
womanhood. We salute you, Alma Mater, and we praise
and proud of your Spi-rit so firm, of your teaching so
"your spirit so firm and your teaching so true" which have

been our guiding star through our high school days and will
be a cherished memory of our future years. "Loved S. T. A.
True. Loved S T A We are grateful and pledge
we are grateful and pledge our hearts sincere to you!"

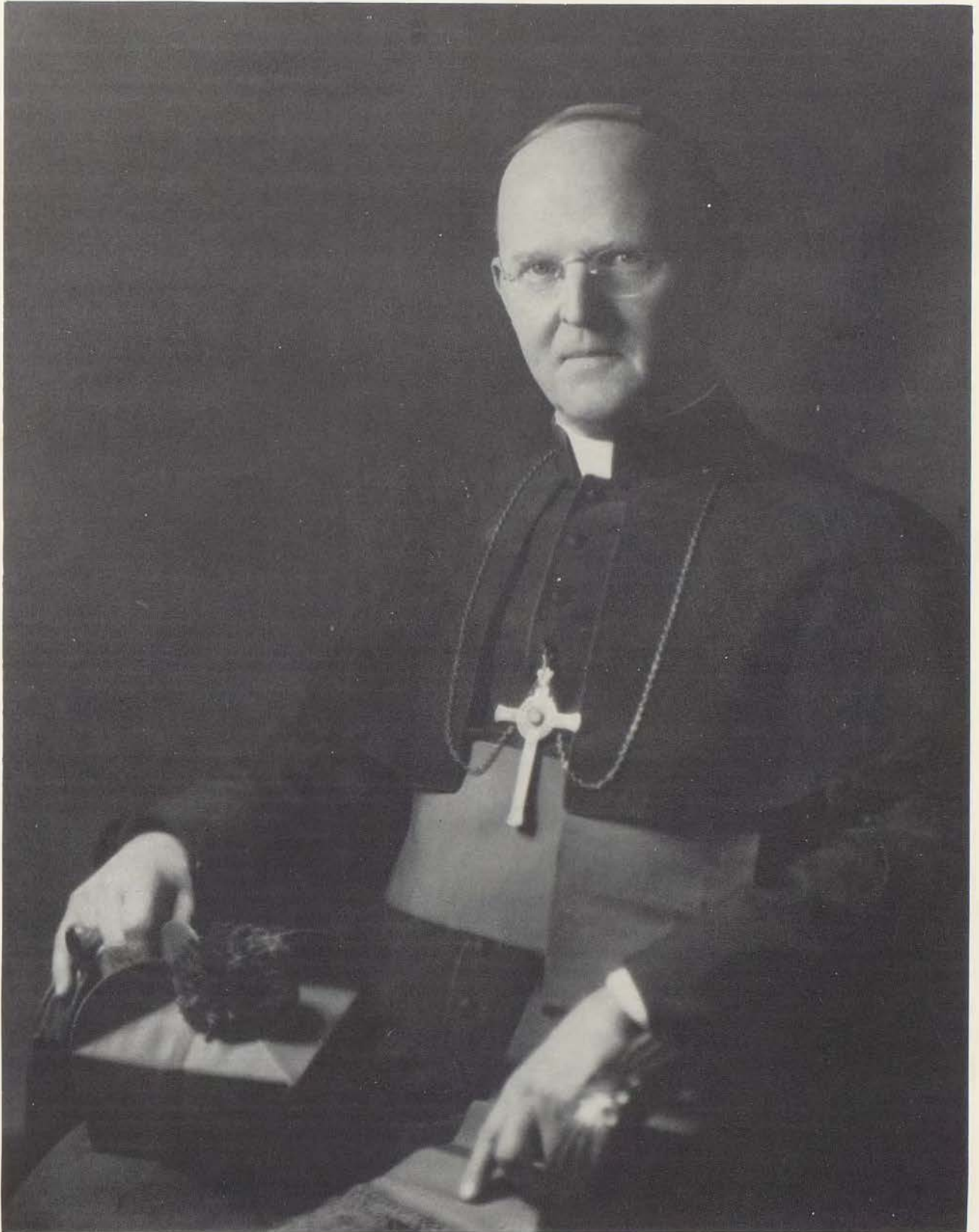
our hearts sin- cere to you!

2. Trust in God our motto, With eyes on

heavily goals the zeal of our great Teresa finds echo

in our souls chorus

Tribute



We pay tribute to our Archbishop, Edwin V. O'Hara, D.D., who during this school year celebrated the fiftieth anniversary of his ordination to the priesthood and the twenty-fifth anniversary of his consecration as a bishop. Archbishop O'Hara has brought into full blossom the seeds of faith planted seventy-five years ago in the newly-founded diocese of Kansas City. Schools, hospitals, and churches give evidence of the spiritual growth of Kansas City under his splendid leadership.



Table of Contents

Faculty

Seniors

Underclassmen

Activities

Clubs

Social Life

Advertising

Our Faculty

Reverend Robert Barron, O.P., Religion

Reverend Dennis McNamara, O.P., Religion

Reverend James Nadeau, O.P., Religion

Sister Mary Constance, C.S.J., Principal, American History

Sister Mary Isidore, C.S.J., General Math, Remedial Reading

Sister St. Patrick, C.S.J., English

Sister Helen Marie, C.S.J., English

Sister Marie de Lourdes, C.S.J., Religion, French, Latin

Sister Mary Callista, C.S.J., Piano

Sister Mary Elizabeth, C.S.J., Mathematics

Sister Mary Madeline, C.S.J., Religion, Latin, Mathematics

Sister Clarice Marie, C.S.J., Religion, Latin, Citizenship, Library

Sister Georgiana Marie, C.S.J., Art

Sister Mary Harold, C.S.J., Religion, Science, Family Living

Sister Agnes Bernard, C.S.J., Religion, English, Speech, Journalism

Sister Marie Loyola, C.S.J., Religion, Business Education

Sister Olive Louise, C.S.J., Religion, Choral, Voice

Sister Mary Damien, C.S.J., Religion, English, Citizenship

Miss Pauline Reardon, Physical Education

Miss Martha Miller, Typing, Piano, Organ

Miss Barbara Bernhardt, World History, Citizenship



Dolores Spanbauer Patricia Ann Toalick
 Betsy Holland Linda Ann Grace
 Betsy Harvey Judy Betty Ann D'Amalvo
 Madeleine Stallings Maureen Smith
 Judith Stephenson Sandra Brown
 Mary Jo Jensen Elaine Stewart
 Mary Jo Zattermeier Ray Marvin
 Sheila Shanahan Patricia Schill
 Judy Sheaffer



Queen Sickman
 Pat Lambers
 Julie Illescas
 Margaret Yae
 Marcia Tringley
 Frances Gaine
 Patricia Day
 Ann Lancaster
 Bonnie Ingenthron
 Barbara Wisner Margaret Edelbruck
 Kathleen Murphy Virginia Bartholome
 Sandra Janousek Ann Fogarty
 Mary Jean Nickelatto
 Frances Spruill
 Mary Ann Ayward
 Sandra Carajin
 Alice Daylor
 Mary Beth Huffer
 Antoinette di Bella
 Judy Henson
 Genie Hodges
 Lane Egander
 Mary Joan Nelson
 James Egander

Compliments of
 MRS. ETTA W. SODEN

Compliments of
 MONSIGNOR MacDONALD



Seniors

Officers



President

MADELEINE STALLINGS

S (aying) - "Oh, how neat!"
T (rait) - School spirit
A (mbition) - To be a tallyhoer
in Excelsior Springs.

Class President 4; Sodality 1, 2, 3, 4;
Sodality Unit Secretary 4; C.S.M.C.
1, 2, 3, 4; Glee Club 3, 4; Bishop's Work-
shop 1, 2, 3; Classical Club 3, 4; Bowling
Club 2; Science Club 4; Scholarship 1,
2, 3, 4; Athletic Club 4.

Vice President

MARY ANN AYLWARD

S (aying) - "Scratch my back."
T (rait) - Femininity
A (mbition) - To coach foot-
ball at Notre Dame.

Class Vice President 4; Student Council
4; Glee Club 4; Sodality 1, 2; Prom At-
tendant 4; AVLA Staff 4; C.S.M.C.
1, 2, 3, 4; Business Club 4; Athletic Club
2, 4.



Compliments of
THOMAS MCGEE AND SONS INSURANCE AGENCY
1002 Walnut

Class of '56

Secretary

BARBARA WIESNER

S (aying)-"Oh, how dumb!"

T (rait)-Brilliance

A (mbition)-To marry a struggling young theophilanthropist.

Transfer from Loretto Academy 3; Class Secretary 4; C.S.M.C. 3,4; Sodality 3,4; Athletic Club 3,4; Glee Club 3,4; Ensemble 4; DART Staff 4; Science Club 4; Classical Club 3,4; Secretary 4.



Treasurer

MARCIA QUIGLEY

S (aying)-"I've got to write tonight."

T (rait)-Unselfishness

A (mbition)-TorivalDiVinci.

Class Treasurer 4; Secretary 2; Sodality 1,2,3; C.S.M.C. 1,2,3,4; Student Council 3,4; Art Club 4; Glee Club-2,3,4; Ensemble 2,3,4; Athletic Club 2,3,4; Secretary 3; Science Club 4; Commercial Club 4.

Compliments of
THE BRIDAL SHOP
1120 McGee



BETSY BLAKE

S- "Bonjour, ma Soeur"

T-Courteousness

A-To be the world's champion
coke drinker.

Sodality 1, 2, 3, 4; C. S. M. C. 1, 2, 3, 4;
Athletic Club 1, 2, 3, 4; Glee Club 3, 4;
Ensemble 2; DART Staff 4; Science Club
4; Bowling Club 2; Catholic Library Rep-
resentative 4.



VIRGINIA BARTHOLOME

S-"Oh-o-o no-o-o"

T-Preciseness

A-To be a lady professor at
Rockhurst.

Class President 1; Sodality 2, 3, 4; Unit
Secretary 3; Glee Club 3, 4; Ensemble
2, 3, 4; C. S. M. C. 2, 3, 4; DART Co-
Editor 4; C. Y. C. Speech Contest 3;
Classical Club 3, 4; Scholarship 1, 2, 3,
4; Mission Queen Attendant 1; Science
Club 4.



SANDRA BROSNAHAN

S-"I can see your point there."

T-Sincerity

A-To be bat boy for the A's.

Sodality 1, 2, 3, 4; Prefect 4; May Court
3, 4; Unit Leader 3, 4; C. S. M. C. 1, 2,
3, 4; Athletic Club 2, 3, 4; Student Coun-
cil 2, 4; Glee Club 3, 4; Ensemble 2;
Bishop's Workshop 1; Bowling Club 2;
Science Club 4.



Compliments of
GRAHAM DRUG STORES
17th and Summit
17th and Jarboe

Compliments of
CONSOLIDATED TRANSFER & WAREHOUSE
COMPANY, INC.
R. L. Winsky, General Manager - 1606 Cherry Street

PATRICIA ANN COOLICK

S-"Oh! How darling!"
T-An eye for fashion
A-To look cute.

Sodality 1, 2, 3, 4; C.S.M.C. 1, 2, 3, 4; Glee Club 4; DART Staff 4; Business Club 4; Bowling Club 2; Athletic Club 4; Mission Representative 4; Science Club 4.



SANDRA CORAZIN

S-"If it's green, pick it"
T-Gaiety
A-To own a used car lot.

Sodality 1, 2, 3, 4; C.S.M.C. 1, 2, 3, 4; Glee Club 3, 4; Science Club 4; Bowling Club 2; Art Club 3; Bishop's Workshop 3; Rockhurst Homecoming Attendant 3.



PATRICIA DAY

S-"Dad, I need money."
T-Generosity
A-To drive a '38 Ford.

Sodality 1, 2, 3, 4; Unit Leader 4; S.S. C.A. 4; C.S.M.C. 1, 2, 3, 4; Glee Club 3, 4; Science Club 4; DART Staff 4; Business Club 4; May Court 4; Athletic Club 4.



Compliments of
MISSOURI-KANSAS INSULATION COMPANY
4723 1/2 Troost

Compliments of
ST. FRANCIS XAVIER CHURCH
1001 East 52nd Street



ALICE ANN DAYLOR

S- "That's the twuth."
T- Earnestness
A- To see the world.

Transfer from Immaculate Heart High School, Los Angeles, California, 4; C. S. M. C. 4; Art Club 4.

ANTOINETTE DiBELLA

S- "C'mon you guys."
T- Casualness
A- To make Pizza Pies.

Sodality 1, 2; C. S. M. C. 1, 2, 3, 4; Glee Club 4; Business Club 4; Science Club 4.



MARGARET EDELBROCK

S- "Let's get going."
T- Loyalty
A- To meet J. Fred Mugs.

Sodality 1, 2; C. S. M. C. 1, 2, 3, 4; Glee Club 3, 4; Ensemble 2, 3, 4; Business Club 4; Science Club 4; Athletic Club 4; AVILA Staff 4.

Compliments of
PHELPS TOOL AND DYE COMPANY
5907 Troost Avenue

Compliments of
COMMERCIAL CANDY COMPANY
1317 Cherry Street

JANE EGENDER

S- "What do you think it is,
your birthday?"

T-Sense of humor

A-To manufacture a blond
dye called "From the Sun."

Class Secretary 1; C. S. M. C. 1, 2, 3, 4;
Vice-President 4; Sodality 1, 2, 3, 4;
Unit Leader 4; May Court 4; S. S. C. A.
4; Mission Representative 2; Glee Club
3, 4; Ensemble 2, 4; Athletic Club 3, 4;
Bowling Club 2; AVILA Staff 4; Speech
Meet 4; Business Club 4; Science Club
4.



MARY JO FALTERMEIER

S-"You know what I mean."

T-Neatness

A-To have a date.

Class Vice-President 1; C. S. M. C. 1,
2, 3, 4; Sodality 1, 2, 3, 4; Unit Secretary
3; Athletic Club 2, 3, 4; Science Club
4; Bowling Club 2; DART Staff 4; Clas-
sical Club 3, 4; President 4; Student
Council 3; Glee Club 3, 4; Ensemble 2,
4; Catholic Library Representative 4.



ANN FOGARTY

S-"I don't believe it."

T-Determination

A-To be a baker.

Sodality 1, 2, 3, 4; Unit Secretary 4;
C. S. M. C. 1, 2, 3, 4; DART Staff 4; Sci-
ence Club 4; Bowling Club 2; Glee Club
4.



Compliments of
OVERLAND PARK SAVINGS AND LOAN
"The Home of Thrift"
8000 Foster

Compliments of
AAA LAUNDRY AND LINEN SUPPLY
4120 Truman Road



BETTY GIAMALVO

S-"Oh Pete!"
 T-Kindness
 A-To teach Theology.

Class Vice-President 2; Student Council Representative 4; Sodality 1, 2, 3; C. S. M. C. 1, 2, 3, 4; Bishop's Workshop 1, 3; Mission Representative 1; Glee Club 3, 4; Ensemble 2; Science Club 4; Business Club 4.



FRANCES GAINEY

S-"Oh, Stab!"
 T-Even Disposition
 A-To beat the 8:10 bell.

Student Council 4; Sodality 1, 2, 3, 4; Secretary 3; Unit Secretary 2; Unit Leader 4; May Court 2, 3, 4; S. S. C. A. 3, 4; C. S. M. C. 1, 2, 3, 4; Glee Club 3, 4; Prom Attendant 3; Science Club 4; Athletic Club 1, 2, 3, 4; President 4.



JUDY GIBBONS

S-" ."
 T-Quietness
 A-To be a cage-bar maker.

Sodality 1, 2, 3, 4; May Court 4; S. S. C. A. 4; Unit Leader 4; C. S. M. C. 1, 2, 3, 4; Glee Club 3, 4; Ensemble 2, 3; N. C. M. E. A. Representative 4; Bishop's Workshop 3; AVILA Staff 4; Science Club 4; Bowling Club 2; Business Club 4; Athletic Club 4.



Compliments of
 BERL BERRY FORD
 Headquarters for Ford cars and trucks
 1818 Independence Boulevard

Compliments of
 MID-WESTERN LITHO PLATE COMPANY
 225 West 8th Street

JUDY GLEESON

S-"Come on, Itty Bitty Buddy!"

T-Versatility

A-To be a cellostring maker.

Class Treasurer 2; Sodality 1, 2, 3, 4; Sodality Representative 1; Unit Secretary 3; C. S. M. C. 1, 2, 3, 4; Glee Club 3, 4; Ensemble 2, 3, 4; Athletic Club 4; Bishop's Workshop 1; Classical Club 3, 4; Treasurer 3; N. C. M. E. A. Student Secretary 4; AVILA Staff 4; Bowling Club 2; Science Club 4.



LINDA GRACE

S-"Oh! That's sharp."

T-Cleverness

A-To be a trapeze artist in a flea circus.

Sodality 1, 2, 3, 4; Glee Club 3, 4; Ensemble 2; Science Club 4; Business Club 4; C. S. M. C. 1, 2, 3, 4; AVILA Staff 4; Athletic Club 4.



BETSY HARVEY

S-"Got the wheels!"

T-Willingness

A-To be the first atom to be seen.

Sodality 1, 2, 3; Glee Club 3, 4; Art Club 4; Bishop's Workshop 3; C. S. M. C. 1, 2, 3, 4; S. S. C. A. 3; AVILA Staff 4; Science Club 4.



Compliments of
SOUTH SIDE BANK
OF KANSAS CITY
3838 Main Street

Compliments of
JAMES H. STANTON CONSTRUCTION COMPANY
1012 Baltimore
"You'll love living in a Stanton Home."



GENIE HODES

S-"Oh, cow in a bucket!"
 T-Amiability
 A-To be a plumber.

Sodality 1, 2; Sodality Leader 2; May Court 2; C. S. M. C. 1, 2, 3, 4; Mission Queen 3; Glee Club 4; Science Club 4; Athletic Club 4; Business Club 4; DART Staff 4; Bowling Club 2.



PATRICIA HENDON

S-"So that ends that!"
 T-Vivaciousness
 A-To open a driving school.

Transfer from Mount St. Scholastica Academy, Atchison, Kansas, 2; Sodality 4; C. S. M. C. 2, 3, 4; Bowling Club 2; Science Club 4; Ensemble 2, 4; Speech Club 4; Business Club 4; Glee Club 3, 4; C. L. S. A. 3, 4.



MARY BETH HUPPE

S-"Oh well."
 T-Sweetness
 A-To go to Never-Never Land.

Sodality 1, 2, 3, 4; C. S. M. C. 1, 2, 3, 4; President 4; Mission Representative 3; Bishop's Workshop 2; Student Council 4; Glee Club 3, 4; Science Club 4; Bowling Club 2; Athletic Club 4.



Compliments of
 SCOTT MOTORS, INC.
 5032 Main Street

Compliments of
 FOLEY HEATING AND PLUMBING COMPANY
 1516 East 9th Street

JULIE ILLESCAS

S-"Carumba,"
T-Eagerness
A-To teach the mambo.

Transfer from Colegio "Santo Domingo de Guzman," Quito Ecuador; C.S.M.C. 3, 4; Mission Queen Attendant 3.



BONNIE INGENTHON

S-"Sh-h-h girls!"
T-Leadership
A-To be the first woman president.

Class Treasurer 1; Secretary 3; Scholarship 1, 2, 3, 4; Bishop's Workshop 1, 2; Sodality 1, 2, 3, 4; C.S.M.C. 1, 2, 3, 4; Glee Club 3, 4; Ensemble 4; Athletic Club 1, 2, 3, 4; DART Staff 4; Art Club 4; Student Council 3, 4; President 4; Speech Meet 3; Speech Club 3; Catholic Library Representative 2; Science Club 4.



SANDRA JANOUSEK

S-"Is anyone taking the trolley?"
T-Adaptability
A-To play third violin in the Wichita Philharmonic.

Transfer from Mount Carmel Academy, Wichita, Kansas 4; Glee Club 4; DART Staff 4; Sodality 4; Student Council Representative 4; C.S.M.C. 4; S.S.C.A. 4; Science Club 4.



Compliments of
ANDY KLEIN PONTIAC, INC.
78th and 69 Highway
Overland Park, Kansas

Compliments of
STANTON INSURANCE AGENCY, INC.
1012 Baltimore



PAT LAMMERS

S-"I believe it!"
T-Competentness
A-To meet Mary Beth at
Never-Never Land.

Scholarship 1, 2, 3, 4; Class Vice-President 1; Sodality 1, 2, 3, 4; Unit Leader 3; May Court 3; C.S.M.C. 1, 2, 3, 4; Athletic Club 2, 3, 4; Glee Club 3, 4; Bishop's Workshop 1; Student Council 4; Business Club 4; Science Club 4; Bowling Club 2; AVILA Editor 4.



MARY JO JENSEN

S-"Wow We-e-e-e!"
T-Sympathetic nature
A-To be a Bubble tester in a
double-bubble factory.

Sodality 1, 2, 3, 4; Unit Leader 3, 4; May Court 3, 4; S. S. C. A. 3, 4; C.S.M.C. 1, 2, 3, 4; Glee Club 3, 4; Ensemble 2, 3, 4; N.C.M.E.A. 4; Science Club 4; Business Club 4; AVILA Staff 4; Athletic Club 4.



ANN LANCASTER

S-"Oh, you know!"
T-Daintiness
A-To get excited.

Class Vice-President 3; Student Council Secretary 3; Sodality 1, 2; Sodality Representative 1; C.S.M.C. 1, 2, 3, 4; C.S.M.C. Representative 1; C.S.M.C. Secretary 3; Glee Club 3, 4; Science Club 4; Rockhurst Homecoming Queen 4.



Compliments of
SAWYER MATERIAL COMPANY
530 Westport Road
Full line of Building Material

Compliments of
BLUE HILLS RESTAURANT AND AMBER ROOM
6015 Troost Avenue

KAY MARVIN

S-"What time is it?"
T-Pep
A-To be a girl scout leader.

Sodality 1, 2, 3, 4; C. S. M. C. 1, 2, 3, 4;
C. S. M. C. Representative 2; Bishop's
Workshop 2, 3; Glee Club 4; Ensemble
2; DART Staff 4; Science Club 4.



MARY JOAN MICKETTO

S-"No kidding?"
T-Effervescence
A-To go to Mars.

Sodality 2; C. S. M. C. 1, 2, 3, 4; Ath-
letic Club 2, 3, 4; Glee Club 4; Science
Club 4.



KATHLEEN MURPHY

S-"Oh that's shrewd!"
T-Wholeheartedness
A-To own a helicopter.

Transfer from Saint Patrick's High
School, Parsons, Kansas 3; Sodality 3,
4; C. S. M. C. 3, 4; Glee Club 4.



Compliments of
AYLWARD PRODUCTS COMPANY
Building Supplies
1715 Cherry Street

Compliments of
MANLEY, INCORPORATED
1920 Wyandotte Street



MARGARET NOE

S-"Honestly!"
T -Helpfulness
A-To be a member ofroyalty.

Transfer from Hogan 2; Glee Club 3, 4;
C, S, M, C. 2, 3, 4; Science Club 4;
Sodality 2; Art Club 4.



MARY JOAN NELSON

S-"Yes, I think so."
T-Cheerfulness
A-To be a dairy queen.

Sodality 1; C, S, M, C. 1, 2, 3, 4; Glee
Club 3, 4; DART Staff 4; Athletic Club
1, 2.



GEORGIANA SCHILD

S-"Call me, now."
T-Reliability
A-To be or not to be.

Sodality 1, 2, 4; C, S, M, C. 1, 2, 3, 4;
May Court 1; Glee Club 4; Athletic
Club 1, 2, 3, 4; AVILA Co - Editor 4;
Science Club 4; Business Club 4.



Compliments of
GROVES BROTHERS AND COMPANY
411 Commerce Building

Compliments of
SPECTOR & VANZANT PRODUCE COMPANY
309-311 Main Street

SHEILA SHANAHAN

S-"Oh I had a ball!"
T-Animation
A-To have a ball.

Sodality 1, 2, 3, 4; Bishop's Workshop 3;
High Point girl 3; C.S.M.C. 1, 2, 3, 4;
Athletic Club 1, 2, 3, 4; Business Club 4;
Glee Club 3, 4; Ensemble 2; Science
Club 4.



JUDY SHEAFFER

S-"I can't find my pen!"
T-Agreeability
A-To be an authority on how
to raise Pekingese pups.

Scholarship 1, 2, 3, 4; Class President 1;
Sodality 1, 2, 3, 4; Mission Queen At-
tendant 2; Business Club 4; Science
Club 4; DART Staff 4; Mission Repre-
sentative 4.



ARDEN SICKMAN

S-"Oh, what a panic!"
T-Bouyancy
A-To be an alumna of the
Chickawawa Bird Watchers'
Club.

Sodality 1, 2, 3, 4; Unit Leader 2, 4;
May Court 2, 3; C.S.M.C. 1, 2, 3, 4;
Student Council Representative 2; Bish-
op's Workshop 2; Glee Club 3, 4; Ath-
letic Club 3, 4; DART Staff 4; Bowling
Club 2.



Compliments of
O'CONNOR CADILLAC COMPANY
1000 State Line

Compliments of
KANSAS CITY FRUIT COMPANY
317-319 Walnut



DOLORES SPANBAUER

S-"Oh really?"

T-Serenity

A-To be Miss America.

Sodality 1, 2; C.S.M.C. 1, 2, 3, 4; Science Club 4; Glee Club 3, 4; Athletic Club 1, 2, 3, 4; Art Club, Chairman 4; Business Club 4.



MAUREEN SMITH

S-"Well--"

T-Graciousness

A-To be a nurse for twins.

Sodality 1, 2, 3, 4; C.S.M.C. 1, 2, 3, 4; DART Staff 4; Register Reporter 4; Glee Club 4; Science Club 4; Speech Meet 3.



Compliments of
A FRIEND



FRANCES SPRUILL

S-"When's the deadline?"

T-Tranquility

A-To be a car hop for a jaguar.

Class President 2; Class Treasurer 3; Sodality 1, 2, 3, 4; Sodality Unit Leader 4; May Court 4; C.S.M.C. 1, 2, 3, 4; C.S.M.C. Representative 1; Bishop's Workshop 1; Student Council 2, 4; S.S.C.A. 4; DART Editor 4; Glee Club 3, 4; Classical Club 4; Science Club 4.

Compliments of
AMERICAN BEAUTY MACARONI COMPANY

552 Campbell Street

"Buy the Brand you Know is Best"

JUDITH STEPHENSON

S-"Dampweather."
 T-Friendliness
 A-To lay off the bottle
 (peroxide).

Class Secretary 1; Glee Club 3, 4;
 Athletic Club 1, 2, 3, 4; Athletic Club
 Treasurer 2; Sodality 1, 2, 3, 4; Vice-
 Prefect 4; Sodality Unit Leader 3, 4;
 S. S. C. A. 4; May Court 3, 4; C. S. M. C.
 1, 2, 3, 4; Rockhurst Homecoming At-
 tendant 4; Science Club 4.



ELAINE STEWART

S-"Chuckle, Chuckle."
 T-Personality
 A-To style her own convert-
 ible.

Transfer from St. Mary's, Omaha,
 Nebraska 2; Sodality 2, 3, 4; Unit Leader
 4; C. S. M. C. 2, 3, 4; May Court 4;
 C. S. M. C. Treasurer 3; Class President
 3; S. S. C. A. 2, 4; Student Council
 Vice-President 4; Business Club 4; Glee
 Club 4; AVILA Staff 4.



LINDA TURNER

S-"You think you're pretty
 smart, don't you?"
 T-Casual humor
 A-To marry a millionaire.

Sodality 1, 2, 3, 4; May Court 2;
 C. S. M. C. 1, 2, 3, 4; Mission Represent-
 ative 3; Business Club 4; Glee Club 3,
 4; Science Club 4; Bowling Club 2;
 AVILA Staff 4; Athletic Club 3, 4.



Compliments of
 KERSTING-GREER MERCHANDISE BROKERS
 406 West 34th Street

HELMAN SALES COMPANY
 3916 St. John Avenue
 Be 1-6700

Senior Directory

1. Mary Ann Aylward	104 West 69 Terrace	Ja 3-2633
2. Virginia Bartholome	15 East 56 Street	Ja 3-5951
3. Betsy Blake	102 East Winthrop Road	Hi 4-6342
4. Sandra Brosnahan	516 West 85 Terrace	Em 3-0956
5. Patricia Coolick	7520 Main	De 3-4750
6. Sandra Corazin	2910 West 87 Terrace	Mi 9-0258
7. Patricia Day	2802 West 67 Terrace	En 2-8523
8. Alice Daylor	501 Poplar	So 1-8520
9. Antoinette Di Bella	2811 East 7 Street	Ch 1-9960
10. Margaret Edelbrock	5200 Wyandotte	De 3-1294
11. Jane Egender	5441 Tracy	De 3-1121
12. Ann Fogarty	5700 Rockhill	Ja 3-0681
13. Mary Jo Faltermeier	6741 Rockhill	Ja 3-7551
14. Frances Gainey	6438 Indian Lane	En 2-8589
15. Betty Giamalvo	715 Forest	Ha 1-3438
16. Judy Gibbons	6545 Edgevale Road	Em 1-5585
17. Judy Gleeson	5844 Charlotte	Hi 4-8177
18. Linda Grace	429 West 57 Terrace	De 3-2288
19. Patricia Hendon	440 East 64 Terrace	De 3-6080
20. Genie Hodes	1020 Huntington	Hi 4-2418
21. Betsy Harvey	824 West 72 Street	De 3-0823
22. Mary Beth Huppe	7521 Main	Ja 3-6120
23. Julie Illescas	Kansas City Tuberculosis Hospital	Wa 4-5800
24. Bonnie Ingenthron	6901 West 68	He 2-1879
25. Sandra Janousek	620 East 63 Terrace	De 3-4205
26. Mary Jo Jensen	5410 Mission Road	Sk 1-3563
27. Patricia Lammers	3859 East 60 Terrace	Em 1-6179
28. Ann Lancaster	22 East 55 Terrace	Ja 3-5736
29. Kathryn Marvin	9011 Wornall	Ja 3-0260
30. Mary Joan Mickleto	5309 Tracy	Hi 4-1207
31. Mary Kathleen Murphy	4850 Oak	Va 1-5914
32. Mary Joan Nelson	5315 Harrison	De 3-0837
33. Margaret Noe	2510 West 53 Street	Jo 2-7236
34. Marcia Quigley	5319 Rockhill	Em 1-0428
35. Georgiana Schild	401 West 58 Terrace	Ja 3-3804
36. Sheila Shanahan	200 West 53	De 3-6112
37. Judith Sheaffer	3906 Bales	Wa 4-0666
38. Arden Sickman	5522 Crestwood Drive	Hi 4-7679
39. Maureen Smith	21 West 54	Em 1-5372
40. Dolores Spanbauer	3422 St. John	Hu 3-2715
41. Frances Spruill	2 West 66 Street	Hi 4-2444
42. Madeleine Stallings	5525 Forest	Ja 3-3555
43. Judith Stephenson	6400 Morningside	Ja 3-3632
44. Elaine Stewart	6103 Barrymore Drive	So 1-8520
45. Linda Turner	5609 Charlotte	Hi 4-0677
46. Barbara Wiesner	5616 Kenwood	De 3-1795

Compliments of
BYERS TRANSPORTATION COMPANY
901 Washington, Kansas City, Mo.

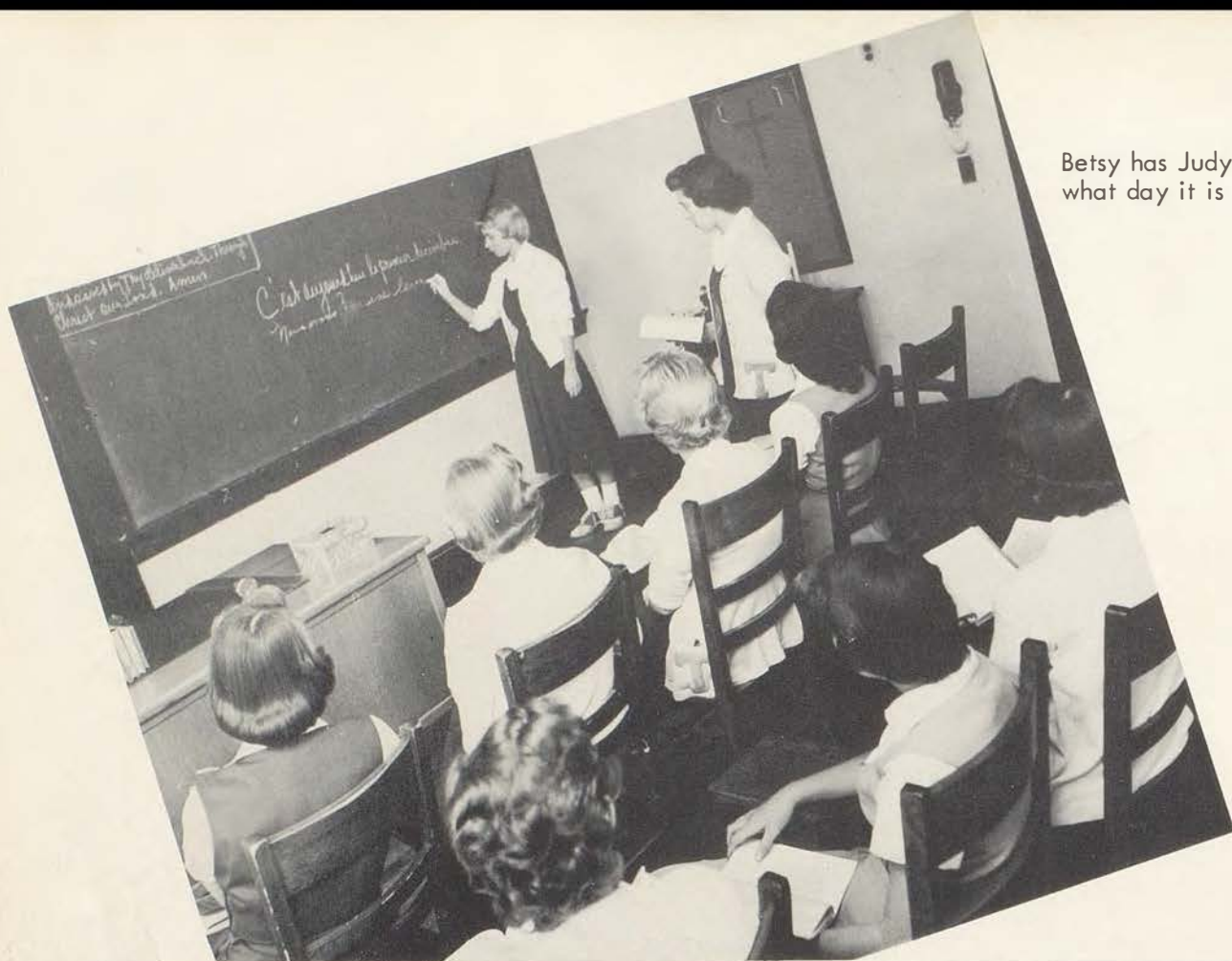
Compliments of
STEVE'S SHOES
Plaza, Brookside, Prairie Village

Class of '56 in '66



Compliments of
MELODY-McGILLEY-EYLER FUNERAL HOME
 Linwood Boulevard at Woodland

Compliments of
HOOPER SALES COMPANY
 Distributor's of Hamm's Beer



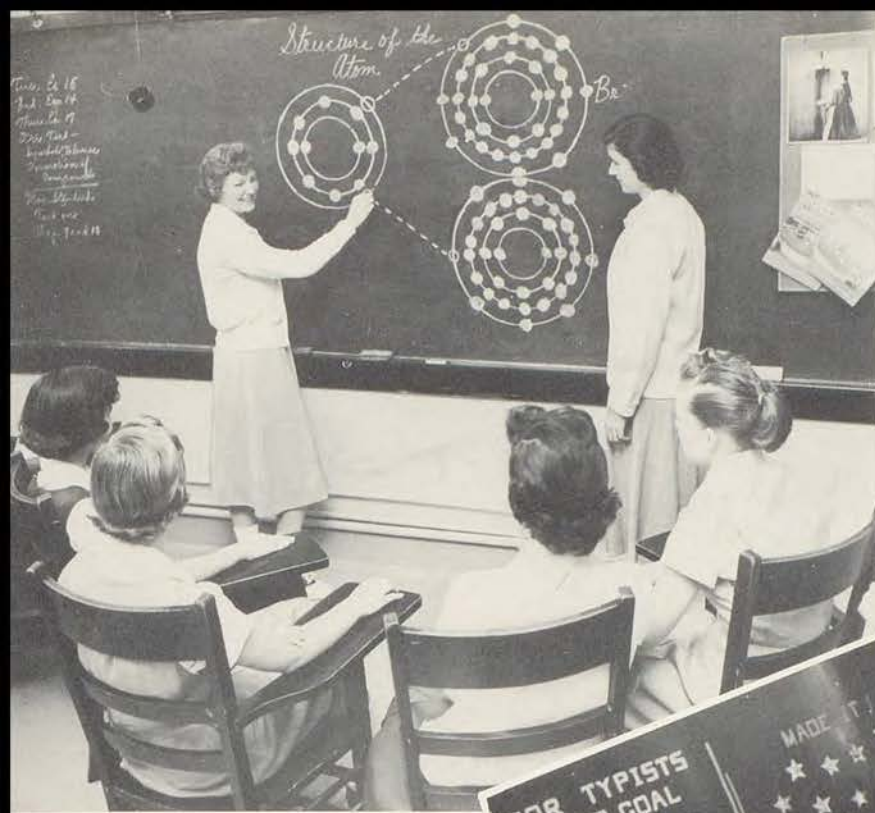
Betsy has Judy stumped on what day it is in France.



Compliments of
COUNTRY CLUB DAIRY
5633 Troost
Kansas City, Missouri

Leonardo Da Vinci never had it
so good.

Compliments of
TOM BRODERICK GYM TOGS
2400 Broadway
Parsons, Kansas



Professors Hendon and Gai-ney give a vitalized demonstration of the structure of the atom to the interested listeners.



Senior speedsters strive to reach their monthly goal.



Barbara Wienser demonstrates to the speech class the proper way to speak before a group.

Compliments of
The "Small but Mighty"
SENIORS



Campus Shot



Underclassmen

President



Mary Williams

Vice-President



Kathy O'Connor

Secretary



Beverly Boutross

Treasurer



Paula Schmidt



1954

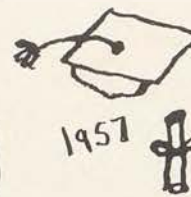


1955



1956

BH



1957



Carole Ainsworth



Carol Jean Anch



Rebecca Appelman



Dorothea Bauer



Toni Bink



Phyllis Blasco



Virginia Bonino



Patty Browne



Elaine Burns



Lynne Carroll



Carolyn Courter



Lenore Cruise



Maureen DeHaemer



Peggy Delaney

Juniors



Mary Martha Dierks



Judy Emert



Nancy Faber



Nora Fenning



Martie Fetters



Barbara Field



Gail Fish



Ylantha Frey



Darla Gaines



Ursula Gastreich



Carol Gerschow



Peggy Gramlich



Jane Higgins



Martha Hodes



Kathleen Hogan



Frances Howland



Anita Hughes



Donna Jones



Paula Keller



Teresa Klein



Linda Layne



Martha Law



Mary Helen Leahy



Patty Lee



Linda Leimgruber



Elizabeth Maguire



Edith Maschler



Sue Mayer



Susan McMichael



Jane McNary



Joyce Minzey



JoAnn Navarro



Mary Ann Nestel



Patty Nelson



Mary Nickerson



Mary O'Brien



Rose O'Brien



Mary Kay O'Connor



Sharon O'Connor



Barbara Ong



Patricia Pearson



D'Ann Purcell



Susan Reardon



Carol Regnery



Marilyn Riccardi



Sharon Roach



Sandra Schild



Mary Joyce Schloegel



Madeline Stubbers



Nancy Tobin

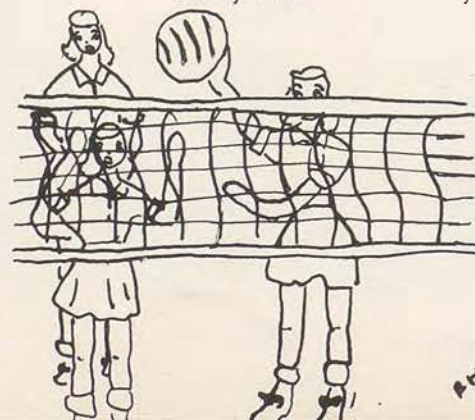


Sylvia Vandever

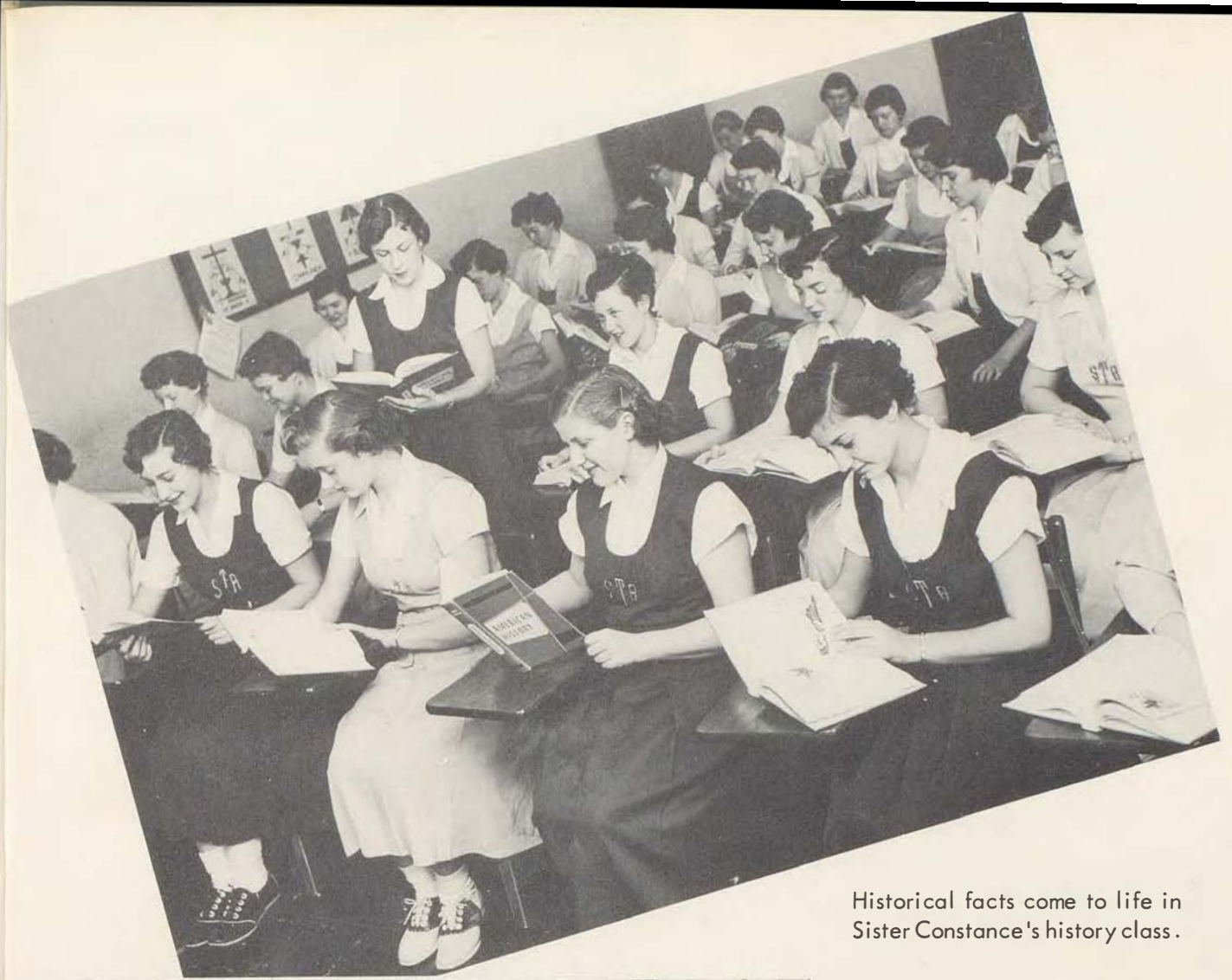


Kitty Wagner

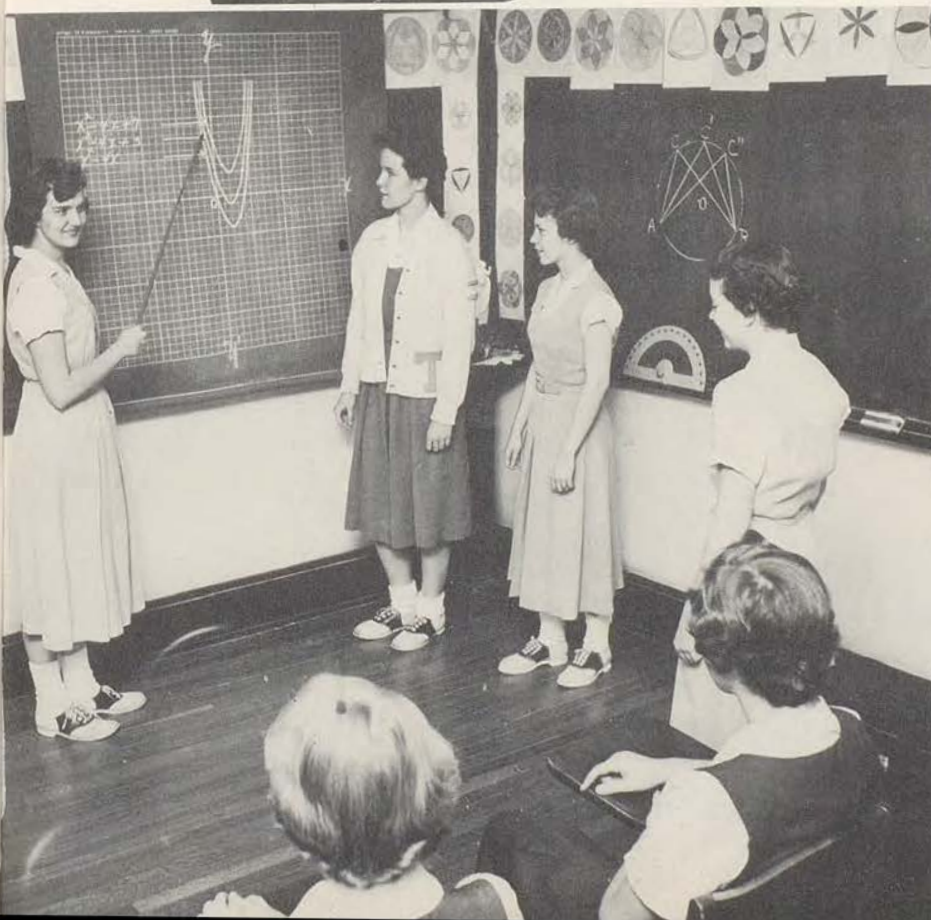
Compliments of
INTERNATIONAL INSURANCE
AGENCY
Rialto Building



Compliments of
BLUE HILLS BANK OF
COMMERCE
6100 Troost



Historical facts come to life in Sister Constance's history class.



It takes the combined efforts of Donna, Lenore, and Paula to convince Mary Kay that the graph is correctly drawn.

Compliments of

CLARA'S FLOWER SHOP
6412 Troost
Kansas City, Missouri

MERCANTILE BANK AND TRUST COMPANY
1119 Walnut
Kansas City, Missouri

Members of the Junior class learn the art of oral expression, while their classmates watch Sister's reaction.



Corinne proves to Elaine and other Juniors that the Catholic Church goes back to the time of Christ.

Wouldn't Mr. Gregg be proud of these future secretaries?

Compliments of
SPALLO AND ANCH INSURANCE
AGENCY
2615 Independence
Kansas City, Missouri



Sophomores



Carol Roleke
President



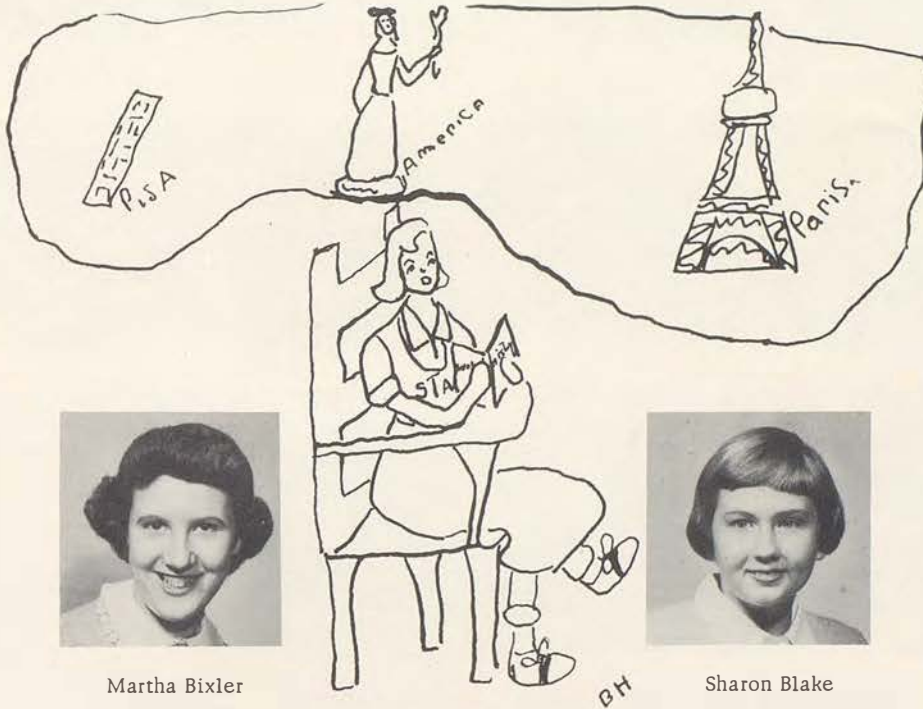
Mary Ann Bauman
Secretary



Joan Bartholome
Treasurer



Sara McElhatton
Vice-President



Mary Kay Antonello



Maxine Ares



Wendy Bauers



Martha Bixler



Sharon Blake



Carol Byrd



Jean Carter



JoAnn Coolick



Patricia Cramer



Joan Cusack



Marie Dean



Katherine DeBlase



Laura DiGiovanni



Tola Rose Drake



Nancy Eagan



Mary Ellen Edelbrock



Judy Egan



Wanda Ervin



Kathryn Ann Fahlstrom



Michaela Farren



Nelda Fenske



Nancy Fitzgerald



Pat Flynn



Cathie Frisch



Carolyn Gist



Mary Glenn



Terence Hasset



Kathleen Hiltner



Gerelyn Hollingsworth



Joyce Hood



Marjorie Kemme



Martha Kingsbury



Shirley Layne



Judy Lee



Mary Jo Lombard



Jeanne Long



Rosemary Lynch



Mary Martin



Julie Mayer

S.T.A.



Susan Mayer



Kathy McCarthy



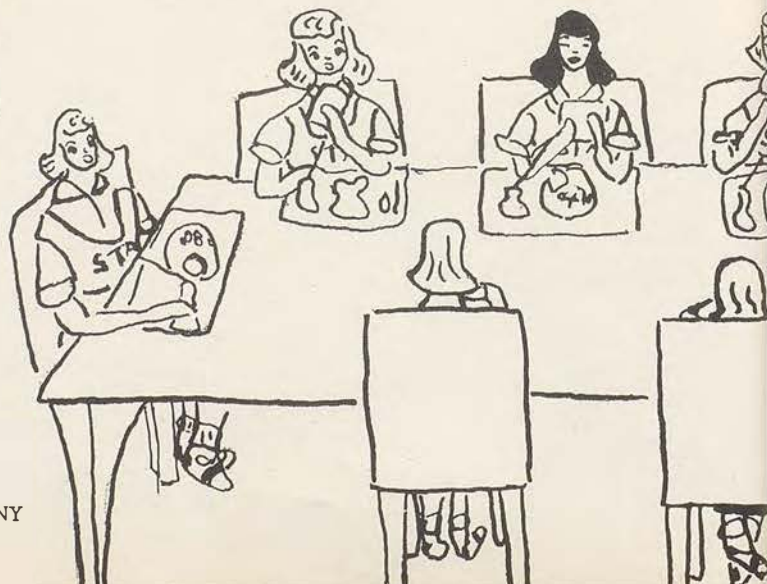
Michele McGrath



Linda Meyers



Josephine Moley



Compliments of
J.C. NICHOLS COMPANY
310 Ward Parkway



Marian O'Brien



Mary Ann O'Connor



Mary Beth O'Connor



Ann O'Neill



Antoinette Orscheln



Jo Ellen Palermo



Carlene Peacher



Paula Petersen



Trudy Rabeler



Sandra Riedl



Sue Ruddy



Emily Scanlan



Sue Scanlon



Frances Scholz



Madeline Seferovich



Patsy Slezak



Kathy Staab



Susie Strayer



Jane Tallman



Mary Wahlstedt



Pat Waters



Jeri Welch

Cafeteria



Kathy White



Penny Wichman



Ellen Wurtz



Anna Marie Zacher



Michaéla Zahner



Compliments of
READY MIXED CONCRETE COMPANY
908 West 25th Street



Besides learning how to cut and sew, these members of the sewing class study Family Living, too.



Joan demonstrates a theorem while the class gazes admiringly at the geometric figures.

Compliments of
 CRAMER POSTURE CHAIR COMPANY
 1205 Charlotte
 Kansas City, Missouri

Compliments of
 THE BYRDS



In General Science there is no worry attached to scales.

At least some people show the result of Sister's hard work.



Lighting the Advent Wreath is an important part of the Sophomore's daily schedule.

Compliments of
 FEDERAL DISTRIBUTING CO.
 2556 McGee
 Kansas City, Missouri

SUN LITE SERVICE CO.
 1205 West 47th Street
 Kansas City, Missouri

MARY ANN DUNN
President



MARY CATHERINE ODDO
Vice-President



Freshmen



ROSEMARIE DOWNER
Secretary



TERRY BETH MAYER
Treasurer



BH



Pamela Adsit



Gloria Atchity



Barbara Ann Bailey



Pamela Baker



Grace Bartholome



Mara Baun



Valerie Berger



Betty Booker



Virginia Boyles



Catherine Butler



Lynn Caley



Judy Chartier



Ursula Como



JoAnne Craig



Gayle Danzo



Carol Dawes

Compliments of FIRST FEDERAL SAVINGS AND LOAN ASSOCIATION
919 Walnut

Compliments of
FRESHMAN A



Diane Draney



Claudia Elliott



Susie Exposito



Susan Fitzgerald



Mary Ann Fitzsimmons



Mary Kathryn Flavin



Patricia Foley



Sarah Goss



Rosanel Gulotta



Suzanne Hawes



Lillian Hidalgo



Ruth Ann Himmelberg



Connie J. Hinson



Teresa Jackson



Elizabeth Ann Jensen



Gertrude Johnson



Nancy Kelley



Emma Kempster



Suzanne Kent



Linda Kerr



Janice Kincaid



Karen Kissick



Mary Koury



Gerry Kramer



Karen Landers



JoAnne Lyman



Mary Beth Lynch



Sandra McCormack



Mary McLiney



Kathy McMahon



Mary Jo McQueeney



Karen Mahoney



Mary Mallory

Genevieve Markovich

Nancy Martin

Barbara Meitner

Carolyn Miller

Mary Kay Miller



Kay Murawski

Kathy Murphy

Susan Murphy

Sue Nelson

Catherine Neumer

Sara O'Brien



Bobbie Ann O'Hara

Joyce Owens

Kathleen Oxler

Patricia Peterson



Mary Margaret Regan

Janet Reidy

Sue Richards

Maurine Riley



Donna Ryan

Jeanie Sachen

Carolyn Schwartz

Mary Kay Skinner

Mary Ann Spiegelhalter

Barbara Steck

Compliments of
HOFFMAN
UNIFORMS
2720 West 43 St.
Kansas City, Ks.



Judy Stroer

Margot Thornhill

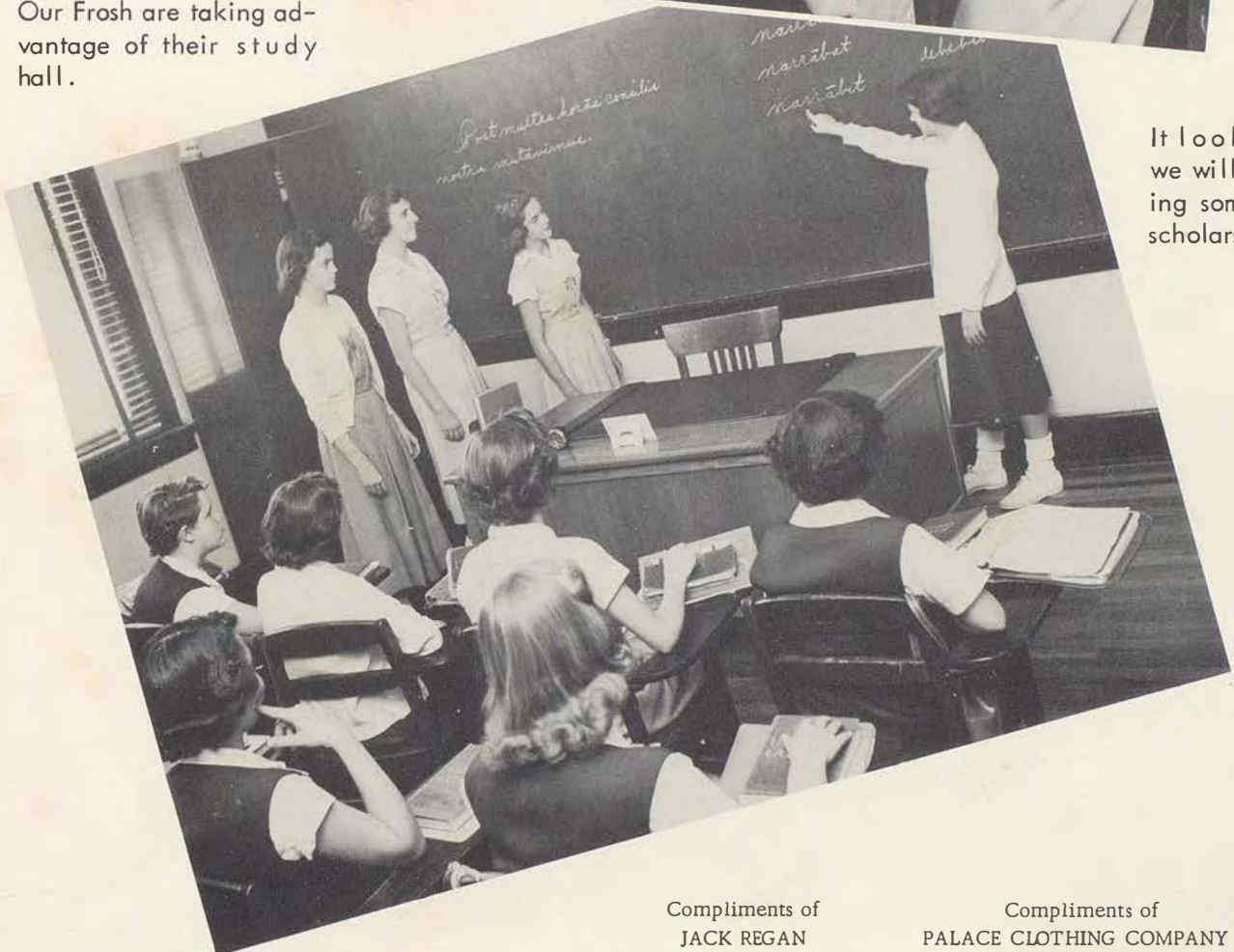
Sally Tucker

Anne Utterback

Compliments of
ST. ELIZABETH'S
PARISH
7444 Main St.
Kansas City, Mo.



Our Frosh are taking advantage of their study hall.



It looks like we will be having some Latin scholars.

Compliments of
 JACK REGAN
 1104 Grand Avenue
 Kansas City, Missouri

Compliments of
 PALACE CLOTHING COMPANY
 #10 on the Mall
 Prairie Village, Kansas

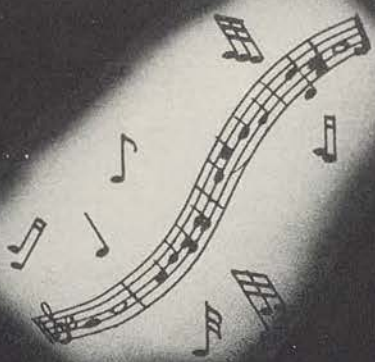


It sounds beautiful, girls.

These Freshmen are getting acquainted with Shakespeare as they dramatize a scene from The Merchant of Venice.



Our budding citizens learn the intricacies of Missouri state government.



Activities

Avila



Pat Lammers
Editor



Margaret Edelbrock
Copy Editor



Elaine Stewart
Layout Manager



Jane Egender
Business Manager



Judy Gleeson
Staff Typist



Linda Grace
Layout Manager

Staff



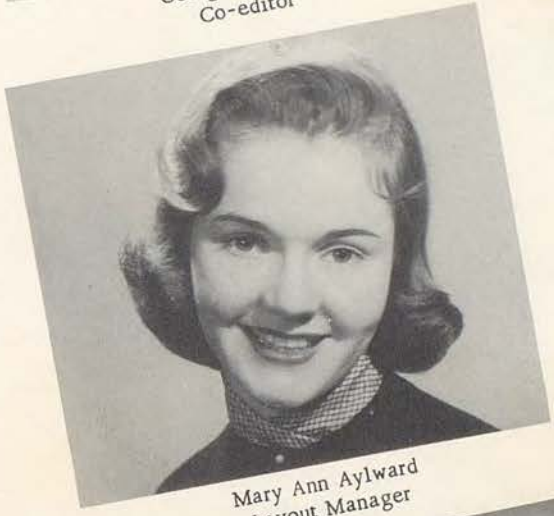
Judy Gibbons
Copy Editor



Georgiana Schild
Co-editor



Linda Turner
Business Manager



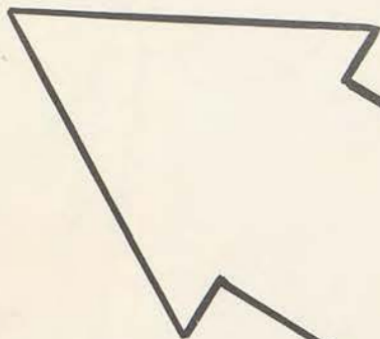
Mary Ann Aylward
Layout Manager



Betsy Harvey
Art Editor



Mary Jo Jensen
Staff Typist



Frances Spruill
Editor



Virginia Bartholome
Associate Editor

Dart



Pat Coolick, Arden Sickman, Genie Hodes, Bonnie Ingenthron, Betsy Blake, Sandra Janousek, Judie Stephenson, and Mary Jo Nelson do their part as reporters and columnists in getting out the All-Catholic issues of the Dart.

Compliments of
SEALTEST ICE CREAM CO.
1217 Harrison



Pat Day
Business Manager



Barbara Wiesner
Features



Ann Fogarty
Make-Up



Maureen Smith
Make-Up



Mary Jo Faltermeier
Business Manager



Judy Sheaffer
Features



Kay Marvin
Circulation Manager

Staff

Compliments of

PLAZA BOWL
430 Nichols Road

COUNTRY CLUB DAIRY
5633 Troost

Sodality



Sandra Brosnahan
Prefect



Judie Stephenson
Vice-Prefect

The Unit Leaders through the Sodality motto "Ad Jesum Per Mariam" try to bring the girls closer "to Jesus through Mary."



These girls attended the S.S.C.A. in Chicago for the Sodality in the new year.



Barbara Field
Secretary



Christmas charity in action.



Paula Schmidt
Treasurer

Missions



Mary Beth Huppe
President



Jane Egender
Vice-President



Sharon O'Connor
Secretary



Mary Helen Leahy
Treasurer



Future mission activities at S. T. A. will be centering around the Far East with the opening of a mission in Japan by the Sisters of St. Joseph.



Collecting stamps is one of the big projects of our Mission unit.



Candidates for Mission Queen admire the prizes offered in the Catholic Magazine Contest.

Compliments of

CHARLES J. FOLEY, STOCKS & BONDS
23 West 10th Street Gr 1-2940

L. YUKON & SON PRODUCE COMPANY
405 Walnut



May Court

These girls, chosen by their classmates, have the honor of assisting in the annual May Day ceremonies. They are active Sodalists, and many of them are Unit Leaders. FIRST ROW, LEFT TO RIGHT: Pat Day, Susan Exposito, Jane Egender. SECOND ROW: Mary Jo Jensen, Martha Kingsbury, Paula Schmidt, Barbara Field, Susan McMichael, Anita Hughes, Maureen Riley, Kathleen Hogan. THIRD ROW: Judy Gibbons, Kathy Staab, Frances Spruill, Frances Gainey, Arden Sickman, Judy Stephenson, Elaine Stewart.

Compliments of THE GAINEY GIRLS



May Queen

A true Child of Mary is SANDRA BROSHAHAN. As a daily communicant and an active Sodalist during all her S. T. A. years, she is deserving of the high honor bestowed upon her by her classmates in her election as Sodality Prefect. The crowning activity of Sandy's year of Sodality leadership is being May Queen and crowning Our Lady on May Day.

Compliments of THE COLLEGE OF ST. TERESA, Kansas City, Missouri

Honors



Frances Ann Spruill has the honor of being Valedictorian of the Class of 1956. Frances has ranked at the top of her class in scholastic average during her four years at S. T. A.

Virginia Bartholome, second highest in scholastic average for four years is named Salutatorian of the class.



Judy Gleeson, Frances Spruill, Patricia Lammers, Virginia Bartholome, and Judy Sheaffer, winners of four-year scholarships in the competitive examinations held at the College of St. Teresa.

Each of this group was awarded an honorable-mention scholarship to the College of St. Teresa.



Compliments of
PLAMOR, INC. Open 8:00 a. m. to 10:00 p. m.
Except Monday Victor 1-7849

HOLSUM BAKERS
814 Southwest Blvd. Kansas City, Kansas

Courteous

ACADEMY GIRL

Loyal

ACADEMY GIRL

Zealous

ACADEMY GIRL

Cooperative

ACADEMY GIRL

Friendly

ACADEMY GIRL



Academy Girl

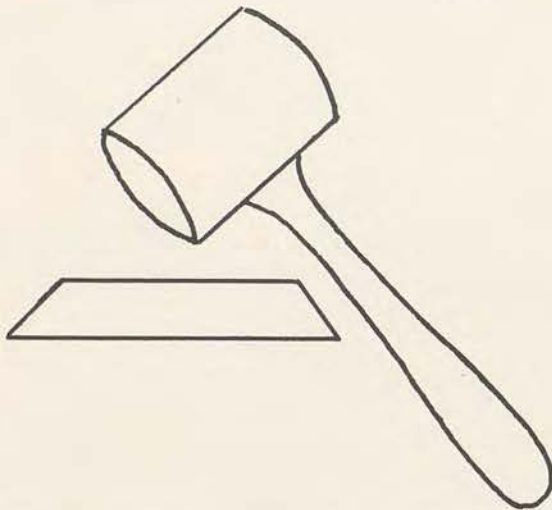
FRANCES SPRUILL was chosen Academy Girl of 1956 by the vote of the faculty and Senior Class. Her outstanding character, loyalty, leadership and scholastic ability make Frannie our Ideal STA Girl.



Student Council

The members of the Student Council assist their moderator, Sister Constance, in promoting courtesy, good conduct, and student co-operation. They achieve this by holding weekly meetings and then making reports to the home rooms. LEFT, OFFICERS OF THE STUDENT COUNCIL: Mary Martha Dierks, Secretary; Bonnie Ingenthron, President; and Elaine Stewart, Vice-President.

BELOW, HALL MONITORS: Betsy Harvey and Ann Fogarty maintain good order at the change of classes.



S. T. A. Student Council



Compliments of
CITY NATIONAL BANK AND TRUST COMPANY
10th and Grand
Established in 1913

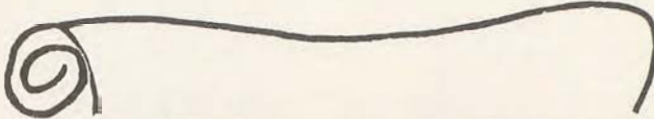
Compliments of
BEST JEWELRY COMPANY
3928 Main Street
Open 'till nine o'clock



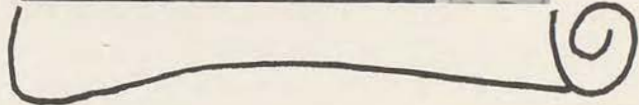
Classical Club

In the Classical Club members study the Mythology of the Greeks and Romans and the private lives of the Latin people. They subscribe to the "Auxilium Latinum," a Latin magazine which contains biographies of saints, prominent men of today, and movie stars. It also has playlets, which they enact, stories from history and mystery stories which they read with great interest.

CLASSICAL CLUB OFFICERS
 Susan Reardon . . . Treasurer
 Mary Jo Faltermeier . President
 Carol Regnery . Vice-President
 Barbara Wiesner . . Secretary



The Senior Members of the Classical Club are examining various ancient Latin manuscripts which are a part of an outstanding collection in the Library of the College of St. Teresa.



The Juniors have borrowed from a television show a Twenty Question game. With Maureen DeHaemer, as chairman; Mary Joyce Schoegel, Teresa Klein, Sharon O'Connor and Linda Layne, as panel members; are endeavoring to answer questions from Greek and Latin Mythology.



Compliments of

FRED RODE CLEANERS
 4024 Rainbow Boulevard
 5010 Linden

SOUTH SIDE PRINTING CO.
 4720 -B Troost
 Kansas City, Missouri



The Tableau, portrayed by Seniors, added to the spirit of the Christmas program.



The S.T.A. Ensemble played a special part in the Christmas program.



The annual Christmas Cantata, The Story of Christmas, was presented by the student body on December 18, 1955, under the direction of Sister Olive Louise.

Compliments of
 PLAZA ELECTRIC COMPANY
 Electric Appliances and Contractors
 606 1/2 West 48 Street Je 1-8825

S7A Glee Club



Sandra Janousek, Judy Gleeson, Judy Gibbons, Mary Jo Jensen, Bonnie Ingenthron and Margaret Edelbrock presented Senior Recitals.



Compliments of
L. P. Janousek, Manager
SECURITY-CONNECTICUT INSURANCE COMPANIES
of New Haven, Connecticut

Compliments of
MYRA KAY ORIGINALS
Manufacturers of Bowling Dresses, Sports Wear
312 West 8th Street



Athletic Club

Miss Pauline Reardon (Left), Director, is responsible for the high standing of the Athletic Club at S. T. A. Membership in the Club is coveted by all the girls, but is won only by those who gain the specified number of points in athletic competition and who measure up to Miss Reardon's high standards of sportsmanlike conduct. Besides training in physical and mental fitness, the Club sponsors several dances which are high spots during the school year. With the proceeds of these social events, the Club provides a scholarship for an incoming freshman and undertakes other worthwhile school projects.

S. T. A. ATHLETIC CLUB. (ABSENT FROM PICTURE: Madeleine Stallings.)



Frances Gainey
President



Marilyn Riccardi
Vice-President



Kitty Wagner
Secretary



Kathy Staab
Treasurer

Compliments of
GUY NUTS & POTATO CHIP COMPANY
2215 Harrison Avenue
Kansas City

Compliments of
Arthur Ninci
MASON CONTRACTION
7500 Main Street



INTRAMURAL SPORTS HOLD AN IMPORTANT PLACE AT S. T. A.
 (ABOVE): Senior Basketball Champs, with that smile of victory,
 line up around Captain Marcia Quigley.

(RIGHT): Inter-class Volleyball competition was keen, but these
 seniors, led by Captain Sandy Brosnahan, captured the coveted
 title of "Champs."

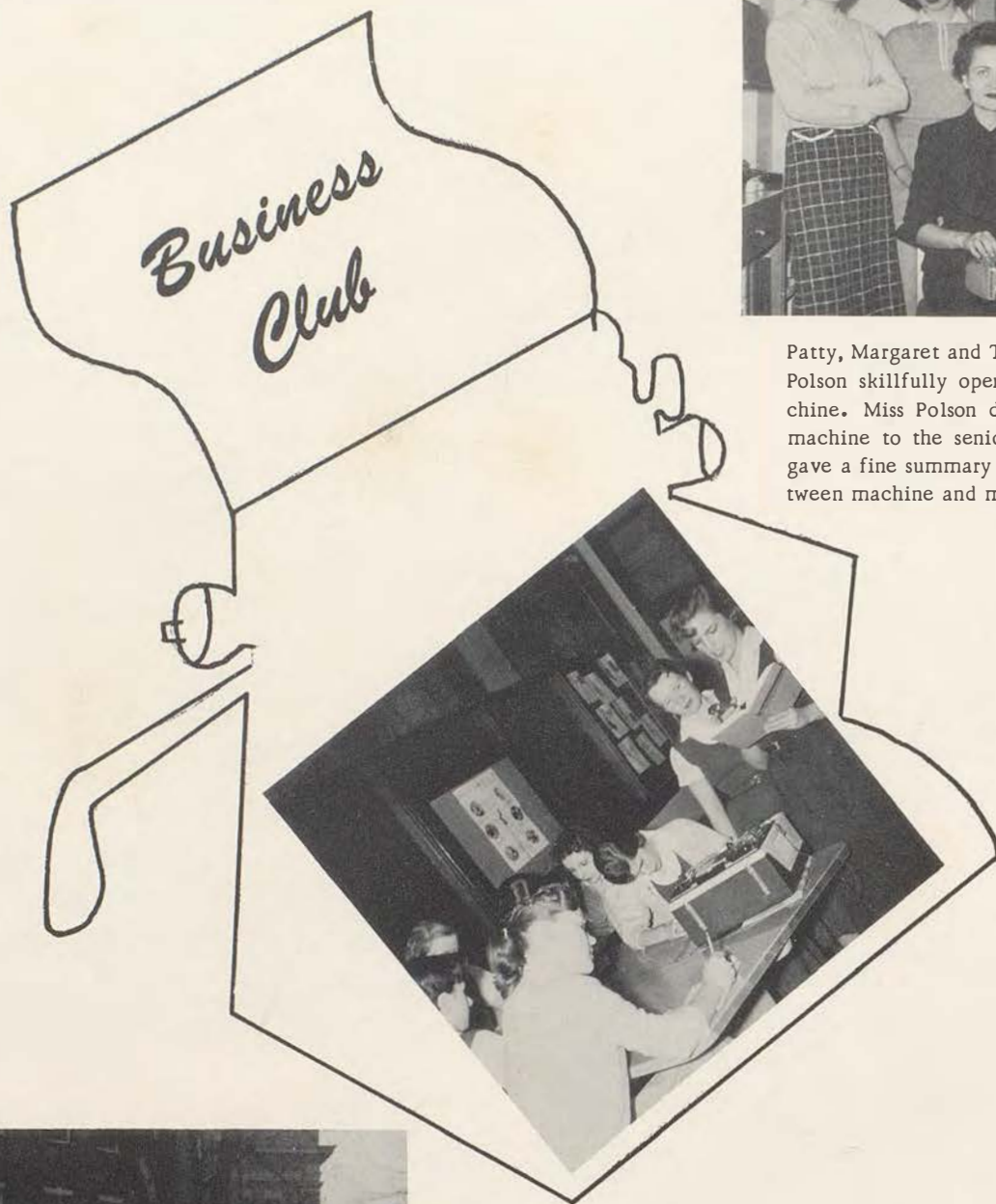
(BELOW): Many S. T. A. -ers are enthusiastic about bowling, and
 use the alleys during gym and after school.



Compliments of
 CHRIST THE KING CHURCH
 85th and Wornall Road

Compliments of
 COLUMBIA NATIONAL BANK
 921 Walnut

The Business Club endeavors to acquaint senior shorthand students with special phases of the business world and with the activities of some of Kansas City's leading enterprises.



Patty, Margaret and Toni watch Miss Anita Polson skillfully operate a stenotype machine. Miss Polson demonstrated the new machine to the senior shorthand class and gave a fine summary of the differences between machine and manual shorthand.

Tape recordings are frequently used in the shorthand class both for speed building and student dictation. Here Marcia, Pat, Mary Jo, Judy, Linda, Georgiana take dictation, while Dolores makes a recording and Elaine checks the time.



With Pat Day at the wheel, Linda, Judy, Genie, Jane and Sheila prepare to set out on a field trip to the Kansas City Circuit Court to see the court reporters in action.

Compliments of

SMITH-DALY BUILDERS, INC.
6250 East 111 Street
Hickman Mills, Missouri

JOHN ROHRER CONTRACTING CO.
1913 West 43rd Street
Kansas City, Missouri

Art Club



Bonnie poses as Alice, Marcia, Dolores, Margaret and Betsy sketch as an exercise in life drawing.

The Art Club is composed of senior art students who supplement their class work with trips to the Art Museum, visits to art centers, and projects such as original Christmas cards.

Art Club members prepare to take off for a visit to various churches in the area to study the liturgical art used in each.



An attractive display is set up, using the lettering, designing and illustrations of Art Club members.



Compliments of

DAYLOR MOTORS, INC.
"Chevrolet, Oldsmobile and Cadillac"
Wamego, Kansas

ROELAND TEXACO STATION
51st and Roe Boulevard
Kansas City, Kansas



Avila Drive

These smiling girls were the top ad-getters in their homerooms, displaying great class spirit and school spirit. They are, (TOP TO BOTTOM): Patsy Cramer, Diane Draney, Mary Ann Nestel, Barbara Steck, Margaret Noe, Pat Day, Mary Jo Lombard and Peggy Gramlich.

PAT DAY, senior, counting the many ads that made her high-point girl of the school. Pat has maintained this position for two consecutive years. Congratulations, Pat!



The following girls were homeroom representatives during the Avila Drive, and faithfully kept track of each girl's record. SENIORS: Judy Stephenson and Jane Egender. JUNIORS: Kitty Wagner and Virginia Bonino. SOPHOMORES: Pat Slezak and Nancy Eagan. FRESHMAN: Maureen Riley and Gayle Danzo.



Compliments of
 RAY SMITH MOTOR COMPANY
 Ford Dealer
 6220 Raytown Road



Dances



Prom Attendants.

D'Ann Purcell and Barbara Field, elected by the Seniors to assist in Prom night festivities.

Compliments of THE APPELMAN FAMILY

Compliments of METZLER BROS. & CO., Insurance
3535 Broadway

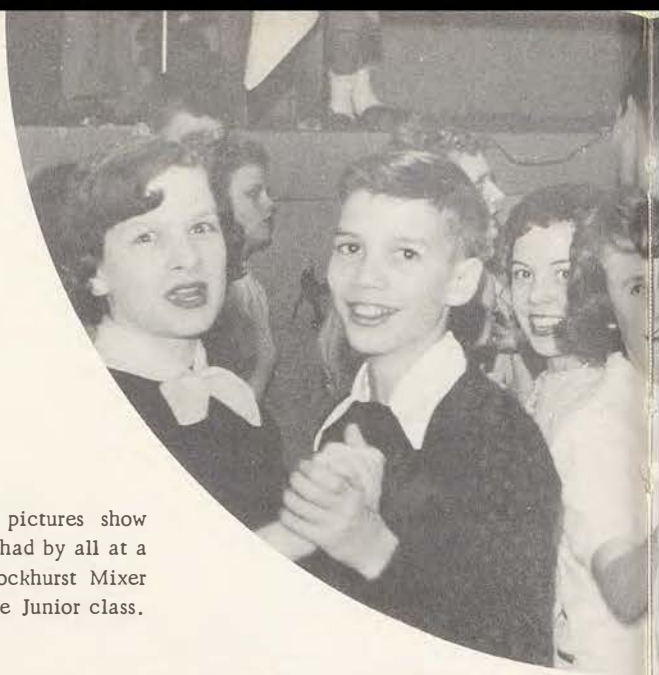
Lo 1-1308



Prom Queen.

After several Junior get-togethers, LINDA TURNER was chosen to reign on Prom night. She was crowned queen at the Junior-Senior Prom on May 4, 1956.

Compliments of METROPOLITAN CONSTRUCTION COMPANY
306 Armour Road Kansas City, Missouri

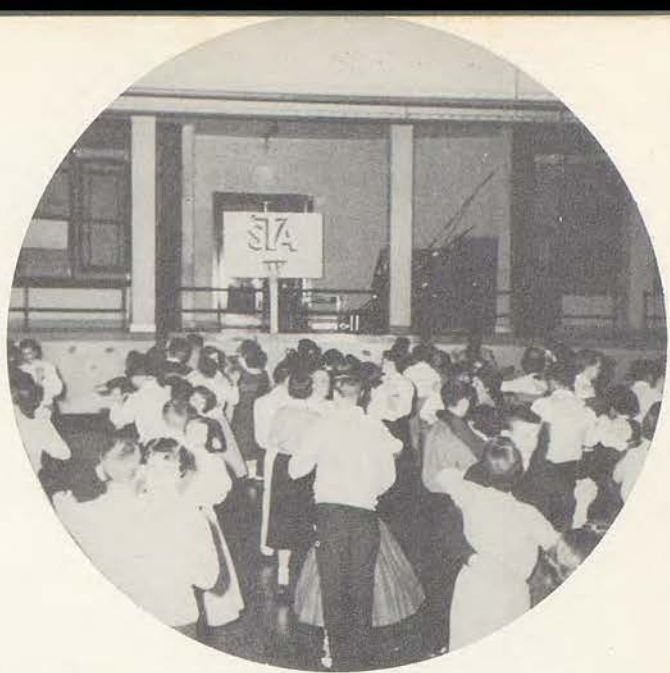


The circle pictures show the good time had by all at a Junior-Senior Rockhurst Mixer sponsored by the Junior class.



Compliments of
AMERICAN DAIRIES, INC.
Box 286





THE TWIN DANCE
sponsored by the Athletic Club.



A prize for the best-dressed twin couple was
awarded to Frances Gainey and Charles Fletcher.

Compliments of
OLD AMERICAN INSURANCE CO.,
One West 9th Street



(CENTER)
Dancing amidst "Hearts and
Flowers" was to the music of
Pat Loftus at the Valentine's
Day dance, sponsored by the
Missions.



Compliments of
ROY CRAMER, JR.
Rotary Manufacturing Co.
2119 Washington

Compliments of
CLIFF TOZIER INSURANCE AGENCY
207 Bennet Building
Kansas City, Kansas

Festive decorations and a holiday spirit prevailed at the Christmas dances, the Junior-Senior Silver Bell Ball, and the Freshman-Sophomore Winter Wonderland.

(CORNER PICTURES)



Compliments of
M. DAVID EVANS
Home Builders
8724 Aberdeen Mi 9-0264

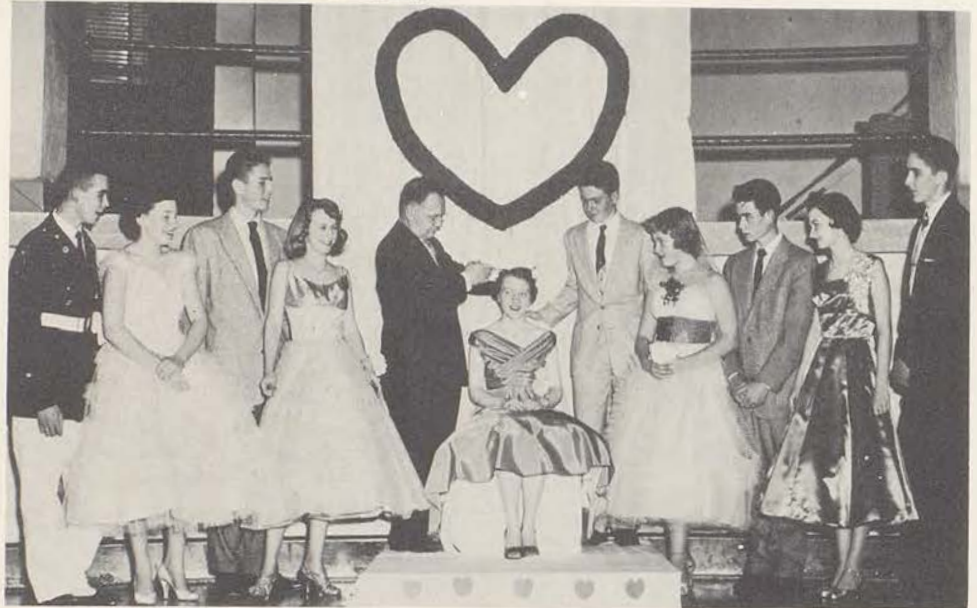
Compliments of
HOYT NELSON & SON
Dierks Building
Ba 1-3660

Celebrities



(SEATED): Antoinette DiBella, Sheila Shahan and Dolores Spanbauer. (STANDING): Pat Coolick and Pat Day were chosen Honorary Cadets of De La Salle Academy to reign at the 1956 La Promande Militaire.

"The small but mighty" seniors candidate for Mission Queen, Miss Judy Gleeson, was crowned at the annual Mission Valentine Dance by her father. (LEFT TO RIGHT), Her attendants: Peggy Gramlich, Linda Meyers, Queen Judy, Susie Hawes and Mission President, Mary Beth Huppe.



LEFT: Miss Mary Jo Faltermier was chosen one of the princesses at the Auto Show of 1956. She reigned for the week's festivities as Miss Mercury.

RIGHT: The one act play, The Princess Marries the Page, received a third place rating in the annual play festival sponsored by the Catholic Theater Guild. Teresa Klein and Sandra Janousek portrayed the Princess and the Page; Linda Grace and Sue Scanlon the King and Chancellor; Patsy Cramer the jester; Sandra Corazin, Beverly Boutross, and Barbara Field the soldiers.



Compliments of
LEE FOOD DIVISION
3111 Fiberglass Road

Compliments of
BESPAKT FROZEN FOODS
"America's Finest"
Division Mid-Central Fish Company

Ann Lancaster, daughter of Mr. and Mrs. Kenneth Lancaster, was chosen by popular vote of the Senior class of Rockhurst High School to reign over the 1955 Homecoming festivities.

Shown at the right in the Homecoming coronation are Sean McGuire, Judie Stephenson, Jim Lopp, Queen, Ann Lancaster, Eddie Meher, Mary Nickerson, and Jack Looney.



Queen Ann Lancaster in the Homecoming parade.



Sharing the spotlight with Queen Ann, were her lovely attendants, Judie Stephenson and Mary Nickerson. Shown at half-time ceremonies, LEFT TO RIGHT, FRONT ROW: Jack Looney, Mary Nickerson, Queen Ann Lancaster and Judie Stephenson. SECOND ROW: Sean McGuire, Jim Lopp, Sherman Stokes, and John Huppe.

ROCKHURST HIGH SCHOOL
5200 Troost

Compliments of
ST. PETER'S CHURCH
6415 Holmes



Terror of Highway 101.



Chain Gang - Parlez-vous francaise



Lady Mcbeth in a Stew.



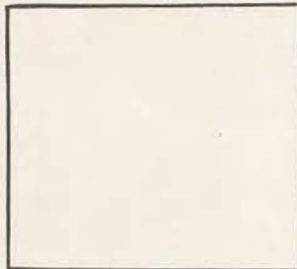
New Flavor?



Pause That Refreshes



Playmates



Polar Bear in a snow storm.



Brusha, Brusha, Brusha

Snapping



Day after the Night Before

Compliments of
ALTMAN SINGLETON-INSURANCE CO.
15 West Tenth Street

HELZBERG'S STORES
"Middle West's Largest Jewelers"



The Gang.



Rise and Shine.

gt
up!!



Tell Me a Story.



I hear ya knock-
ing, but ya can't
come in.



Down by the Station Late at Night.



No more nightly pin-ups.



I Wonder Where the Yellow Went



Welcome Traveler



"M-i-c-k-e-y M-o-u-s-e"



More and

Compliments of
MAY POTATO CHIP COMPANY
2214 McGee
Compliments of
HOTEL ATCHISON
Atchison, Kansas

Personal Patrons

The Most Reverend Edwin V. O'Hara
 The Most Reverend Joseph Marling
 Monsignor W. I. Conrad
 Monsignor H. Schilling
 Reverend T. Brett
 Reverend J. G. Gerst, S.J.

Reverend J. G. Hogan, S.J.
 Reverend F. J. Mahoney, S.J.
 Reverend F. Maker
 Reverend J. P. Nichol
 Reverend T. O'Brien
 Reverend M. F. Wogan

Adela Gift Wrapping
 Adsit, Dennis Dickson
 Adsit, Pamela Anne
 Ainsworth, Mr. and Mrs. Arthur
 Ainsworth, Joanne
 Ake, Marjorie
 Allamore, Mr. and Mrs. Jack R.
 Altman, Mr. and Mrs. William C.
 Amoneno, Margaret Ann
 Antonello, Mr. and Mrs. John F.
 Antonello, Mary Kay
 Ares, M. C.
 Ares, Maxine
 Athletic Club of St. Teresa's Academy
 Bailey, Mr. A. E.
 Bambic, Mercedes
 Barbieri, Mr. and Mrs. John
 Barkofske, Frank
 Batton, Therese
 Bauers, Mr. and Mrs. J. B.
 Bauers, Wendy
 Bauman, Mr. and Mrs. John E.
 Baumgartner, Mr. and Mrs. Adolf
 Bell-Air Cleaners
 Berger, Mary Jane
 Berger, Mrs. Marjorie
 Bernhardt, Barbara
 Bickell, Mr. and Mrs. B. A.
 Bickerman, Mr. and Mrs. George
 Bink, Mr. and Mrs. A. J.
 Bisman, Ray H.
 Bixler, Mr. and Mrs. Fred H.
 Bixler, Martha
 Blair, Mr. and Mrs. David
 Blake, Mr. and Mrs. F. H.
 Blasco, A. J.
 Blue Ridge Roller Rink
 Boehm, Mrs. Mae
 Bonavia, Mr. and Mrs. H.
 Bonbanck, Mr. and Mrs. John
 Bonino, Mr. and Mrs. A.
 Bono, Peter F.
 Booker, Mr. and Mrs. C. H.
 Booker, Clifford
 Boutross, Barbara
 Boutross, Mr. and Mrs. George R.
 Bowes, Mr. and Mrs. Norman M.
 Boyer, Clyde
 Brand, Carl
 Brand, Chick
 Breting, Mr. and Mrs. George, Sr.
 Britt, Mrs. James
 Brockelman, Mr. and Mrs. William

Brown, Bill
 Brown, Virginia
 Browne, Mr. and Mrs. J. A.
 Bua, Mr. and Mrs. James
 Buckley, Mr. and Mrs. Marian S.
 Burnette, Billy
 Burnette, Mr. and Mrs. Louis F.
 Burns, Helen
 Butler, Mr. and Mrs. Edward J.
 Buttler Family
 Buttler, Rose
 Carrier, Dr. and Mrs. Edison C.
 Carrigan, Gerry
 Carter, Mr. and Mrs. A. G., Sr.
 Carter, Mr. and Mrs. A. G., Jr.
 Carter, Mr. James
 Coach House Sportswear
 Coates, Mrs. Roselind
 Cody, Nellie
 Coffman's Fine Foods
 Coleman, Mr. and Mrs. R. J.
 Como, Mr. and Mrs. Vincent J.
 Compliments of a Friend
 Compliments of "Curley"
 Compliments of a Freshman
 Compliments of T. J.
 Compliments of the Seniors
 Coolick, Pat Ann
 Coolick, Rita Jo
 Corazin, Sandra
 Crestwood Cleaners
 Crow, Mrs. E. M.
 Cruise, Mr. and Mrs. K. A.
 Cuccia, Sal
 Cummins, Mrs. H. Lee
 Cusack, Joan
 Cusack, Mr. and Mrs. John P.
 Danzo, Gayle
 Davis, Edwin W.
 Davis, Frank L.
 Day, Joyce
 Day, Linda
 Day, Mr. and Mrs. J. F.
 Day, Patricia
 Daylor, Alice
 Dean, Floyd
 Dease, Mr. and Mrs. J. N.
 Deibold, Ronald
 Delaney, Diane
 Delaney, Mr. and Mrs. John J.
 De La Salle Seniors
 DeMaria, Mr. and Mrs. Peter
 Demming, Mr. and Mrs. Homer

Dennis, Mr. and Mrs. Robert
 Dibbon, Al E.
 DiBella, Antoinette
 DiBella, Micheline
 DiBella, Mr. and Mrs. Joseph
 DiBella, Virginia
 Dierks, Mr. and Mrs. F. M.
 Dierks, Mrs. Harry L.
 Dillon, Fred F.
 Donnelly, Mary Golden
 Donovan, Margaret Mary
 Downer, Miss Patricia
 Downer, Mr. and Mrs. T. E.
 Duffy, Frank M.
 Duncan, Linnie
 Dwyer, Dr. and Mrs. Hugh L.
 Eagan, Mr. and Mrs. John P.
 Eagan, Nancy
 Edell, Mr. and Mrs. J. F.
 Edwards, Judy
 Egan, Mr. and Mrs. Frank
 Egan, Judy
 Eldringhoff, Teresa
 Elliott, Mr. F. J.
 Elliott, Mrs. F. J.
 Ervin, Wanda
 Ervin, Mr. and Mrs. Ward
 Faber, Nancy Jo
 Fagan, Mr. and Mrs. W. D.
 Farren, Michaela
 Farren, Mrs. W. F.
 Feierabend, Dick
 Fennessy, Mrs. W. J.
 Fenning, Madlyn
 Fenske, Mrs. Otto
 Feters, Mr. Harold M.
 Feters, Martha
 Feters, Mrs. William
 Field, Barbara
 Finucane, Geraldine
 Fiscus, Mr. and Mrs. Robert, Sr.
 Fish, Bill and Gail
 Fish, Mr. and Mrs. A. H.
 Fisher, Mr. and Mrs. Jess M.
 Fitzgerald, Nancy
 Fitzgerald, Mr. and Mrs. Thomas
 Flanagan, James
 Fligg, Nancy
 Fogarty, Dr. and Mrs. J. A.
 Francis, Jack
 Francke, Dr. H. Edward
 Frederick, Ruth
 Frey, Mr. and Mrs. F. J.



Frey, Lanti
 Frisch, Mr. J. L.
 Froeschl, Mr. and Mrs. Paul
 Garcia, Mr. and Mrs. Joseph
 Gardner, Mr. and Mrs. Linus
 Gastreich, Mr. and Mrs. H. A.
 George, Alex
 Geraghty, Marylyn
 Gerschow, Carol
 Gerschow, Mr. and Mrs. R. J.
 Gibbons, Judy
 Gibbons, Mr. and Mrs. Robert T.
 Giamalvo, Antonia
 Giamalvo, Charles
 Giamalvo, John
 Geier, Marianne
 Gilbert-Scott Picture and Gift House
 Gilchrist Flowers
 Gill, Mr. and Mrs. John D.
 Gist, Carolyn
 Gist, Dr. and Mrs. W. W.
 Gleeson, Judy
 Glenn, Mr. and Mrs. S. S.
 Grace, Mr. and Mrs. Francis
 Gramlich, Mrs. J. R.
 Gramlich, Mrs. John
 Grimes, Mr. Sherman J.
 Gurriere, Mr. and Mrs.
 Hadel, Mr. and Mrs. Frank
 Hall, Mr. and Mrs. L.
 Hall, Rita
 Hannagan, Miss Dorothy
 Happer, Mr. and Mrs. Andrew M.
 Harris, Mr. and Mrs. Fred A.
 Harries, Mr. and Mrs. J. W.
 Harvey, Mr. and Mrs. R. E.
 Hatton, Mr. and Mrs. Fred
 Hauck, Mr. and Mrs. Fred
 Hauetter, Dr. and Mrs. R. T.
 Hayes, Zita Ann
 Harold's Service
 Hefler, Barbara
 Helen Foster Employment Company
 Hendon, Mrs. Dorothy M.
 Hendon, Patty
 Hennessy, Mr. and Mrs. F. A.
 Henninger, Mr. and Mrs. Charles J.
 Henry, Mr. and Mrs. R. A.
 Hentges, Marilyn
 Hiltner, Mr. and Mrs. Daniel E.
 Hinson, Mr. J. C.
 Hinson, Mrs. W. J.
 Hirtz, Mr. and Mrs.
 Hix, L. F.
 Hodes, Genie
 Hodes, Mr. and Mrs. Herman
 Hodes, Mr. and Mrs. Robert H.

Hodes, William
 Hogan, Mr. and Mrs. Frank
 Hogle, Mrs. Leonard
 Hogle, Mr. and Mrs. George E.
 Holden, Helen
 Holiday House
 Hodd, Mr. and Mrs. Joe E.
 Hooley, Miss Anne Sarachon
 Horn-Bostel, Teresa
 Howdy Doody
 Howland, Marlene
 Hughes, Deborah
 Hughes, Margaret
 Hughes, Mr. and Mrs. J. J.
 Huppe Twins
 Hursley, Mr. and Mrs. Harry
 Illescas, Julie
 Illescas, Mr. and Mrs. Ignacie
 Ingenthron, Bonnie
 Jack Frost Do-Nuts
 Jensen, Elizabeth Ann
 Jensen, Mary Jo
 Jones, Donna
 Jones, Mr. and Mrs. Ernest C.
 Johnson, A. Danny
 Johnson, Mrs. B. A.
 Johnson, Mr. and Mrs. William H.
 Juan, Clyde
 Kansas City Composition Company
 Keller, Paula
 Kelley, Mr. and Mrs. Thurber W.
 Ketterlin, Don
 Ketterlin, Mr. and Mrs. George A.
 Ketterlin, Pat
 Klub, Mrs. Melvin E.
 Knop, William E.
 Kuchem, Bob
 Kunz, Carolyn
 Lammers, Mr. and Mrs. W. F.
 Law, Mr. and Mrs. J. B.
 Layne, Linda
 Layne, Mrs. D. R.
 Layne, Shirley
 Lee, Mr. and Mrs. James J.
 Leimgruber, Mr. B. F.
 Leimgruber, Mrs. B. F.
 Leiter's
 Leonhard, Charles
 Loftus, Mr. and Mrs. Pat
 Lomonaio, Mr. and Mrs. Henry
 Long, Jean
 Lopp, Jim
 Lynch, Mary Noreen
 Lynch, Mr. and Mrs. J.
 Maguire, Mr. and Mrs. P. H.
 Mallory, Mr. and Mrs. C. M.
 Mallory, Margaret

Maschler, Mr. and Mrs. T. F.
 Marshall, Bill
 Martin, Joan
 Martin, John
 Martin, Mr. and Mrs. Leo E.
 Martin, Mary F.
 Martin, Paul L.
 Mathews, Charlene
 Matthews, Mr. John L.
 Mayer, J. E.
 Mayer, Mr. and Mrs. James E.
 Mayer, Margaret
 Mayer, Terry Beth
 Mayer, Julie
 McCarthy, Mr. and Mrs. Edward A.
 McElhatton, F. J.
 McGinly, Mr. and Mrs. Frank
 McGonigle, Mr. and Mrs. William E
 McGrath, Carolyn
 McGrath, Mr. and Mrs. Allen E.
 McGurren, Ed.
 McMahan, Francis
 McMahan, Margaret M.
 McMichael, Mary Lou
 McMichael, Mr. and Mrs. R. J.
 McNary, Jane
 McNary, Mr. and Mrs. W. P.
 McNellis, Mr. and Mrs. M. M.
 McQueeney, Aileen
 McQueeney, Mr. and Mrs. J. Ward
 Meiners, Marilyn
 Meitner, Mr. and Mrs. John
 Meitner, Mr. and Mrs. Raymond
 Merli, Dana
 Meyers, Linda
 Mickleto, Mary Joan
 Miller, Dona
 Miller, Miss Martha
 Miniace, Mr. and Mrs. Joseph
 Mitchell, Mr. and Mrs. John M.
 Moley, Mr. and Mrs. Frank P.
 Moley, Josephine
 Moore, Mr. and Mrs. C.
 Murphy, Mrs. Fidelis
 Murphy, Kathleen
 Murphy Kathy
 Murphy, Miss Margaret
 Murphy, Marilyn
 Murphy, Michael J.
 Murphy, Mr. P. J.
 Muehlbach, Mr. Robert
 Mullin, Martha
 Mundan, Mr. and Mrs.
 Murray, Neil, Jr.
 Muser, Rosalia
 Neenan, James P.
 Nelson, Mr. and Mrs. Earl F.

Nelson, Patty
 Nestel, Mr. and Mrs. Robert E.
 Nester, Jack
 Neuer, Mrs. F. W.
 Nickerson, Mary
 Noe, Margaret
 Noe, Mrs. Margaret C.
 Norman, Jack
 O'Brien, Mrs. R. C.
 O'Brien, Mr. and Mrs. Robert C.
 O'Brien, Teresa
 O'Connor Beauty Shop
 O'Connor, Mrs. John J.
 O'Connor, Mary Kay
 Oddo, Mr. and Mrs. Frank
 O'Hara, Mr. and Mrs. James
 O'Hern, Mary Ellen
 Oliver, Mrs. Mary C.
 O'Neill, Mary Louise
 O'Neill, Mrs. Bernard
 O'Neill, Mr. and Mrs. Gerald
 Ong, Barbara
 Ong, Mr. and Mrs. Richard
 O'Sullivan, Mary
 Oviatt, Paul R.
 Patton, Mr. and Mrs. Thomas
 Peacher, Mr. and Mrs. M. Carl
 Pearson, Mr. and Mrs. Leo
 Pearson, Pat
 Pendergast, Mr. and Mrs. Robert
 Peron, Mr. Juan
 Petters, George
 Petersen, P. G.
 Petersen, Mrs. Paul
 Price, Mr. and Mrs. Earl W.
 Price, Susan
 Prophet, Verna
 Powers, Mr. and Mrs. John
 Pozier, F. M.
 Purcell, Mr. Joe
 Purcell, Mrs. Loretta
 Punton, Mr. and Mrs. John, Jr.
 Randolph, Mr. and Mrs. Raymond
 Raupp, Mr. and Mrs. Otto
 Raymond, Marilyn
 Reardon, Miss Pauline
 Reardon, Susan
 Redemptorist Brothers
 Regnery, Florence
 Regnery, Katherine
 Regnery, Mr. J. W.
 Rick, Jean
 Riedl, Mr. and Mrs. Raymond
 Riley, Mr. and Mrs. James J.
 Ritch Realty Company
 Roach, Mr. and Mrs. John P.
 Roach, Sharon

Rocket Motors
 Rogers, Mr. and Mrs. Jack
 Rogers, Mrs. Katherine
 Runyan, Mary Lynn
 Ryan, Donald W.
 Ryan, Mr. and Mrs. G. W.
 Sachen, Mr. and Mrs. Louis P.
 Saint Aloysius Church
 Saint Catherine Church
 Saint Michael Church
 Saint Peter's Church
 Souro, John T.
 Scanlan, Emily
 Scanlan, Mr. and Mrs. Tom
 Scanlon, Sue
 Scanlon, Mr. and Mrs. T. G.
 Schild, Mr. Fred G.
 Schild, Mrs. Fred G.
 Schild, Mr. and Mrs. Fred G.
 Schild, Joan
 Schloegel, Mrs. Anna
 Schmidt, Mr. and Mrs. Hugo F.
 Schudy, Mr. and Mrs. Frank
 Schulte, Mr. and Mrs. V. P.
 Seferovich, Mr. and Mrs. George
 Seferovich, Madeline
 See, Mr. and Mrs. W. F.
 Senne, Mr. and Mrs. J. E.
 Shalinsky Brothers
 Sharp, Mr. and Mrs. W. J., Jr.
 Sheaffer, Judy
 Sheaffer, Mrs. T. D.
 Sheets, Dr. J. A.
 Sherwood, Jeanne
 Shewahlucen
 Shop, Mr. and Mrs. W. J., Jr.
 Sicking, Miss Josephine
 Sicking, Mr. and Mrs. Walter
 Simms, Mrs. Dennis
 Sister Jerome Frances
 Skinner, J. O.
 Smith, Mr. Eugene J.
 Smith, H. V.
 Smith, Maureen
 Smith, Mr. and Mrs. Wm. T.
 Soden, Mr. and Mrs. J. P.
 Solomon, Joann
 Sooy, Mr. and Mrs. E. C., III
 Spanbauer, Dolores
 Spanbauer, Mr. and Mrs. J. P.
 Spalding, Janet
 Spielburgher, Mabel
 Spoor, Major and Mrs. F. G.
 Spruill, Mr. and Mrs. Francis
 Staab, Mr. and Mrs. E. L.
 Staab, Kathy
 Stallings, Madeleine

Stanton, Dr. J. O.
 Steele Cleaners
 Steffen, Dr. and Mrs. T. F.
 Stephenson, Janet
 Stephenson, Mr. and Mrs. Tom
 Stewart, Alice
 Stewart, Mr. and Mrs. C. J.
 Stewart, Elaine
 Strayer, Barbara
 Strayer, Mr. and Mrs. Bernard B.
 Strayer, Susie
 Stone, Mr. and Mrs. Louis
 Stubbers, Madeline
 Stubbers, Mr. C. F.
 Stubbers, Mrs. C. F.
 Stubbers, Sue
 Stumpff, Mr. and Mrs. D. J. and Karen
 Sullivan, Mr. and Mrs. B. J.
 Sullivan, Mrs. James R.
 Swyden Cleaners
 Tesson, Miss Frances
 Thielen, Mr. and Mrs. E. N.
 Third Triumvirate
 Tom Cafe
 Townsend, Mr. and Mrs. J. E.
 Trafficway Super Market
 Travalent, Mr. and Mrs. Sam
 Turner, Linda
 Turner, Mrs. H. W.
 Turner, Mr. and Mrs. Louis L.
 Vaughn, Betty
 Wade, Henry
 Wagner, Mrs. Mildren E.
 Wagner, Mr. Robert M.
 Wagner, Mrs. Robert M.
 Walsh, Mr. and Mrs. James G.
 Waldo Theater
 Wernel, Mr. and Mrs. Clarence
 White, Mr. and Mrs. Frank P.
 White, Kathy
 Wichman, Mr. and Mrs. A. H.
 Wiesner Family
 Wiley, Mike
 Williams, Mary V.
 Williams, Mr. and Mrs. John F.
 Winstead Drive-In on the Plaza
 Wormington, Mr. and Mrs. Bob
 Wurtz, Ellen
 Wurtz, Mr. and Mrs. George C.
 Wyrech, Mr. and Mrs. Fred R.
 Valdes, Vanesa
 Yadrich, Mary C.
 Yancey, Mr. and Mrs. Steve
 Zacher, Mr. and Mrs. Gottfried
 Zeller, Mr. and Mrs. Stephen A.
 Ziether, George Dean



Business Patrons

Abbey Rents
4041 Broadway

R. E. Adams Drugs
5450 Troost

Alaskan Fur
1107 Walnut

Arthur Ainsworth
Gallup Map and Stationery
1330 Walnut

All Star Pictures
709 Westport Road

Peter Aleshi & Co.
13 East 3rd Street

Allen's Bowl, Inc.
4835 Independence

B & G Amusement Co.
107 East 31st Street

Andrejs Charm and Model
School
1003 Main Street

Associated Wholesale Grocer,
Inc.
1933 Troost Avenue

Baldwin Piano Co.
1015 Grand

Harry Barrett Insurance Agency
405 West 34 Terrace

Father Barron
2201 Benton

Clint Bartlett Automotive
Service
2711 East 18th Street

Barzaare Beauty Salon
4805 Prospect

Benjamin Stables
87th Hillcrest Road

George Bennett's Lakeside
10 Minutes West of
Kansas City, Kansas

Bennett Retail Store
5400 Johnson Dr.
Mission, Kansas

Bennington Used Cars
5810 Truman Road

Berl Berry Motors, Inc.
Lincoln-Mercury Continental
Motors
3440 Main Street

Blackman & Nuetzel Machine
Co.
1103 East Armour

Blue Hills Cleaners & Dyers
5924 Troost, Kansas City
7135 West 80th, Overland Park

Mrs. Thomas C. Bourke
644 West 60th Terrace

Boutross Grocery
1826 East 11th

Bowen Construction Co.
3200 Fairmount

Boyle - Midway Inc.
New York 17, New York

Broadway Radio Co.
5023 Main Street

Brookside Plumbing & Heating
Co.
312 East 51st. Street

Jerry Burke Travel Service
Dwight Building
Town House Hotel

The Cake Shop
1505 Central Avenue
1017 Central Avenue

Cannon Pharmacy
5447 Troost

Carroll Construction Co.
1330 East 10th Street

Carroll's Grocery Store
5444 Troost

Caterer's Inc.
P. O. Box 6039
Bannister Rd. and Troost

Compliments of
Ceasar Comics By Shewahlučen

C. M. Chalfont
316 East 51st Street

Charm House Decorators
120 West 62nd. Street

Chisholm's Dry Cleaners
and Shirt Launderers
7305 Troost

Circus Drive-In
7547 Troost

Dave Cody-Boiler Repair
2040 McGee Street

Colonial Barber Shop
316 East 51st. Street

Colonial Cleaners
314 East 51st Street

Columbia Glass and Window Co.
1824 McGee

Compliments of the Cougars

Compliments of a Friend

Compliments of
The Senior Class of 1956

Mary Gertrude Condon Interiors
Member of American Institute of
Decorators
103 West 47th Street Va 1-3316

Conus Studio of Fashionable Hair
12th and Walnut

Johnny Coon Orchestra
2201 Grand

George Cope and Sons,
Contractors
912 East 48th Street

Les Copley, Ra 2-2250
"Not Just A Band An Attraction"

Country Club Cleaners
5031 Main Street

Country Club Laundry and
Dry Cleaning
5028 Main Street

Betty Crane, Interiors
10 West 43rd Street

Crestwood Card and Gift Shop
321 East 55th Street

Cross Food Center, Inc.
320 East 51st. Street

Cuban Room
5 West Linwood



Culligan Soft Water Service
5319 Troost

Dalton Florist
RFD Overland Park, Kansas

Frank J. Danzo Co.
7900 Charlotte

Sam Dasta & Son Construction
Co.
715 Charlotte

Lou Davis Realty Co.
11504 South 71 Highway

Dee's Drugs
8437 Wornall

DeFeo Fruit Company
401 Walnut

DeFeo and Sons Tobacco and
Candy
802 Southwest Blvd.

DeFross Service
4880 Main

Maurice J. DeHaemer
Insurance Agency, Parkville, Mo.

Denny's Skelly Service
600 Ward Parkway

Dick's Conoco Service
7630 Troost

Dierks and Son Lumber Co.
1901 Woodland

Dorothea's Bootery
508 West 75th St.

Dorothy's Styling Salon
16 West 63rd St.

Dorman Pharmacy
3600 St. John

Double I Supply
Shawnee and Adams

Mr. Tom Drake Theatrical
Agencies
1106 Westport Rd.

Walter F. Draney
8200 Mercer

Dropository Corporation
P. O. Box 246
Grandview, Missouri

Ed's Day and Nite Florists
Serving Greater Kansas City
601 East 31st and Gillham

Electric Utilities Corporation
4118 Broadway

Ellfeldt Machinery and Supply
1219 McGee

Ellsworth Flower Shop
5107 Main

Emma's Lunch
2856 Southwest Blvd.

Etem Insurance Agency
Insurance for Every Need
111 and 71st Highway

Eterno Awning Corporation
1122 East 33 Street

W. H. Faber Company
6940 Wornall

Faddis Motor Company, Inc.
62nd. Terrace and Main

Fautless Laundry and Linen
Supply Co.
1940 Broadway

Ferguson Service
1800 Troost

M. M. Fitzgerald-Insurance
Commerce Building

Flower Bowl
1407 East 46th St.

Compliments of
Mr. and Mrs. John Fogarty Jr.

Franklin's Monkey Cleaners
3833 Broadway

Don Gaines Poultry
1820 Troost

G A Cigarette Vending
Machine Co.
800 Southwest Blvd.

General Typewriter Company
1217 Grand Ave.

George's Beauty Salon
8223 Troost

Gilchnist Flowers
6442 Troost

O. H. Gerry Optical Company
Professional Building

The Gift Box
Gifts of Distinction - Hallmark
Cards
1718 West 39 St.

D. L. Goldsberry and Co.
Advertising
121 West 63rd St.

Good Travel Service
1009 Baltimore

Gregory Beauty Shop
406 East Gregory

Charles G. Haake and Son
1820 Main

Mr. and Mrs. Robert Haas
5411 Baltimore

Hal's Hair Fashion
4808 Bellevue

Hanna Dry Cleaners
Country Club Plaza
Prairie Village, Ruskin Heights

Harry's Shoe Repair and Luggage
3948 West 69th Terrace

Helzbergs
"Middle West's Largest Jewelers"
400 Nichols Rd.

Henry Tel. Answering Service
3217 Summit

Hick's Ashby and Company
"Complete School Supplies"
3006 Holmes

H. J. Hodes and Company
2751 Gillham Rd.

Harley D. Hodkins
Groceries and Meats
7019 Oak Street

Hogerty's Restaurant and
Lounge
12 West 63 Street

George Hogue Mercantile
1600 St. Louis Avenue

Holcom Brothers Service
8901 Wornall

Compliments of
Holy Name Parish

The House of Mary
4532 Main

A. L. Huber and Son,
Home Builders
4611 Crysler

Indian Valley Stables
110th and Mission Road
Overland Park, Kansas

Jack House, Inc.
5401 Johnson Dr.
Mission, Kansas

E. E. Jackson
Jones Store

Jennie's Italian Restaurant
511 Cherry

Carl Jensen Sales, Inc.
5539 Troost Avenue

Compliments of
Mr. and Mrs. O. C. Jensen

Joyce Cleaners
7956 Wornall Road

Kansas City Feather Co.
566 Troost

Kansas City Hay Press Co.
801 Woodswether Road

Kansas City Jaguar-MG, Inc.
4203 Troost

Kaplans Fabrics
4764 Broadway

Paul A. Keller
1147 East 49 Street

J. Louise Kemme
Real Estate Broker
1200 West 95th Street

Compliments of "King"

Kissick & Son Const. Co.
Hickman Mills, Missouri

A. A. Klughartt Machinery Co.
1205 Woodswether Rd.

Kenneth D. Lancaster, Optician
6239 Brookside Plaza

Landers Jewelry
205 Altman Bldg.

Lenell's-Lee's Biscuit Co.
5520 Troost

Lever Brothers Co.
101 West 11th St.

Joe Liles Standard Service
2815 East 23rd St.

Lloyd Builders, Inc.
402 Waltower Bldg.

Lyon Drug Company, Inc.
115th St. and 71 Hi-way

Mace Ryer Co.
2556 McGee Trafficway

Mahana Photo
200 Huntington

Mailiards Men & Boys Wear
Number 19 On-the-Mall
Prairie Village, Kansas

L. Mallin & Sons
301 Walnut

Maranzinos Restaurant
7912 Wornall Road

Mark Richard
Ruskin Heights, Overland Park

Martins "finer Foods"
7960 Lee Boulevard
Leawood, Kansas

Marshall's Nu-way, Inc.
2517 Swope Parkway

Martins Food Mart
7510 Troost

W. A. Mathes Meat Market
526 Central Avenue

Mr. and Mrs. William Matthews
21 East Concord Avenue

McCarthy's Beauty Salon
5909 Main

McLaughlin Hairdresser
7216 Wornall Road

Compliments of
Mrs. James R. McQueeny

Meadow Lake Greenhouses
79 and State Line, Missouri

L. and M. Mercantile
305 East 31st Street

Frank J. Meuer
605 West 74th Street

Midwest Motors
601 East Truman Road

Mid-Western Litho Plate Co.
220 West 8th Street

Mikes Tavern
6708 Winner Road

Mission Laundry and Dry
Cleaning Co.
7200 Wyandotte



H.E. Moore Electric Co.
411 West 74th Terrace

Morrison's Texaco Service
2025 Independence Blvd.

Muehleback Funeral Home
6800 Troost

B. Muller-Thym Co.
Everything religious for the
Catholic, Church, School and
Home
1327 Grand Ave.

Murphy Drugs
7425 Broadway

National Photo Co.
7135 Wyandotte

Al Navarro's Town & Country
Realtors
5509 Johnson Dr.
Mission, Kansas

New World Cleaners
1013 East 55th St.

Compliments of
Mr. and Mrs. J.L. Nickerson

Compliments of
Mrs. Gene Nottberg

Oak Park Laundry & Dry Cleaning
2611 East 39th St.

O'Kelly Barber Shop
5536 1/2 Troost

Old Westport Drapery Studio
706 Westport Rd.

W.E. Oldham-Insurance
317 Tenth and Main Bldg.

Orscheln Brothers Truck Lines,
Inc.
615 East 17th St.

Compliments of
Dr. H. H. Owens MD

Bert Pearson Insurance Agency
1016 Central

Piper Sinclair Service
7837 Metcalf
Overland Park, Kansas

Prier Brass Manufacturing Co.
7801 Truman Rd.

Prospect Pharmacy
2601 East 18th St.

Compliments of
The Purcell Family

Russell E. Purvis Insurance
6305 N. Oak

Red Howe Amusements
4135 Truman Rd.

Renner's Shoe Rebuilding
4634 Wyandotte

Rae Jean Dance Studio
5108 Independence

Ralph and Lee's Sinclair Service
63rd and Oak

Red Barn Appliance
701 Main, Grandview, Missouri

Reeders Furniture
919 Minnesota

Reinhardt's Flowers
5709 Mission Rd.

Reitz Meat Products Co.
5608 Raytown Rd.

Rich Cleaners
1315 East 10th St.

Riverside Red X
Riverside, Missouri

Rockhill Radio Co.
5406 Troost

Rockhill Storage
5539 Troost

Rockhurst Market
5043 Troost

Roland Jeanneret
4526 Main



Rost Chevrolet Co.
10401 Independence

John Rowe's Sinclair Service
75th and State Line

Safeway Home Improvement Co.
921 Lydia Ave.

St. Aloysius Church
1107 Prospect

St. Joseph Hospital
Linwood & Prospect

St. Augustines Parish
7801 Paseo

Wm. R. St. Louis Jewelry
5105 Main

St. Margaret's Hospital
School of Nursing
759 Vermont, Kansas

St. Mary's Hospital
School of Nursing
101 Memorial Dr.

Compliments of
St. Teresa's Guild

Schibi Paint & Supply Co.
7418 Wornall Rd.

W.G. Schmidt
7333 Broadway

Ralph Sharp, Asland Cleaners
4711 East 24th St.

Shirley's Dress Shop
3751 Main

Shop Beautiful
The best in hair styles.
6000 North Oak St. Trafficway

Mr. and Mrs. Ralph E. Shores
8037 Garfield





Sites Brothers Motor Co.
7916 Metcalf, Overland Park,
Kansas

Smaks Drive-In
Mission, Kansas

Bruce Smith Drugs
Prairie Village, Kansas

Jerry Smith Buick
5835 Troost

Southside Cleaners
3039 Prospect

South Side Fireplace Wood and
Patio Co.
4613 Mission Rd.

Southside Service Station
1200 Westport Rd.

Standard Store Fixture Co.
1700 Oak

A. G. (Andy) Stricker, Agent
Allstate Insurance Co.

Style Book Cleaners
3609 Broadway

Bill Sullivan Chevrolet Co.
6501 Troost

Sunny Shores Beach and Camp
1 Mile East of Blue Ridge and
Craig Road
Hickman Mills, Missouri

Surface Paint Co.
1737 Oak

Mr. H. N. Swartz
8040 Holmes

T. G. & Y. 5¢ to \$1.00 Store
7432 Wornall

Frank J. Tallman Insurance
Broker
1002 Walnut

Terminix Company of Kansas
City
3907 Broadway

Theresa's Ward Parkway Beauty
Salon
4809 Jefferson

Pete Thomas Bar B Q
11227 71 Highway
Hickman Mills, Missouri

Thomas Raditor Service
700 East 14th St.

Thomson Conoco Service
5400 Troost

George Tidona Orchestra
4011 Troost

Tobin Seed Co.
1317 St. Louis

Todd's Delivery
1031 East 23rd St.
North Kansas City

Topper Tavern
2406 Truman Rd.

Town Hall Ballroom
4011 Troost

Trail House
4708 Wyandotte

Troost Dry Goods
5441 Troost

Troost Hardware & Supplies
5508 Troost

Troostwood Beauty Salon
5544 Troost

Troostwood Motors
5744 Troost

The Twin City State Bank
1906 West 43rd St.

United Driving School
3834 Main

Velvet Cream Popcorn Co.
3442 Broadway

Veretta Amusement Co.
23 1/2 East 5th St.

Vic's Tavern
5304 East 24th St.

Victors Twin Oaks, Coiffures
5000 Oak

Steve Vogli & Co. Realtors
5806 Troost

Village Cleaners
8305 Wornall

Waggener Cleaners
117 East 31st St.

Wagner Funeral Home
Lindwood Blvd. and Wyandotte

Wasson Fabric Mfg. Co.
2920 McGee Trafficway

Hugh Waters Sheet Metal
5937 Troost

B. V. Welsh Insurance Agency
5635 Rockhill Rd.

Westbrook Variety Store
7502 Troost

Westport Floor Co. Covering
4045 Broadway

Westport Glass and Paint Co.
425 Westport Rd.

Ben H. Williams Ind.
25 East 65th St.

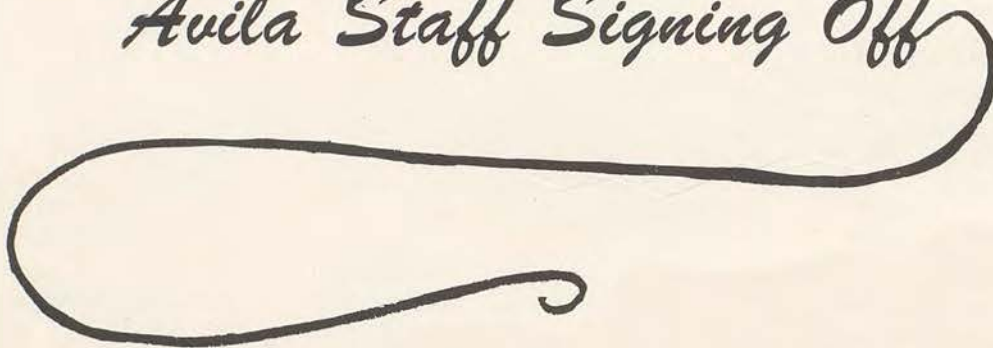
A. Zahner Co.
1819 East Tenth St.
Dwight Building

Compliments of
Lorene S. Zahner





Avila Staff Signing Off



Compliments of

COLONIAL UPHOLSTERY COMPANY
Custom Built Furniture
3614 Main Street

ASSUMPTION CHURCH
318 Benton Boulevard
Kansas City, Missouri

Autographs

Compliments of

FULTON BUS LINES
"Charter Trips our Specialty"
106th Holmes Road

PEPSI-COLA BOTTLING COMPANY OF KANSAS CITY
1200 Burlington
Kansas City, Missouri

" Moments to Remember "

Compliments of

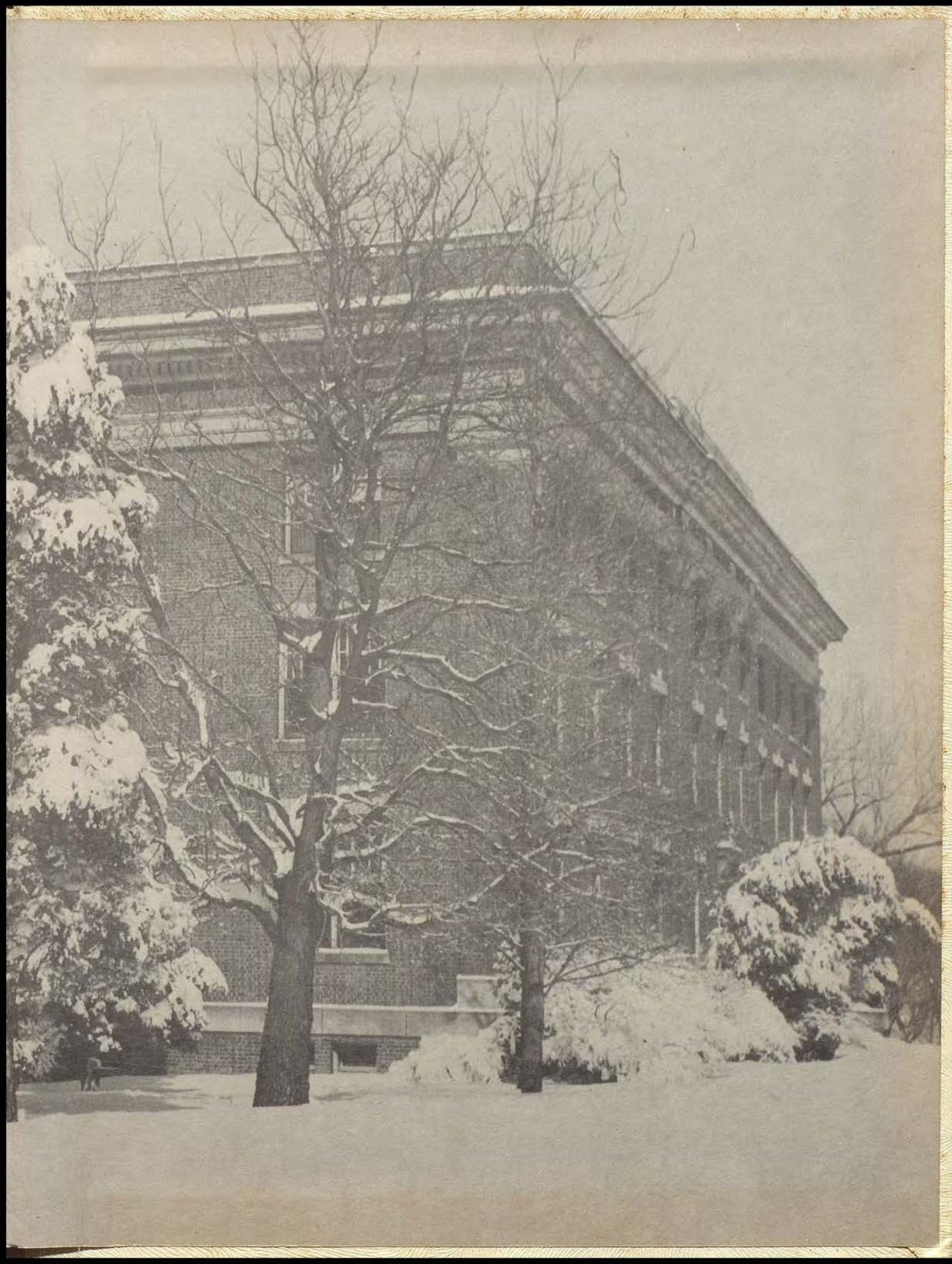
MACKAY ELECTRIC COMPANY
1704 Central
Kansas City, Missouri

UNITED AGENCIES
4425 Main Street Lo 1-0300
Kansas City, Missouri

Myers
YEARBOOKS
in depth

FACEMAKERS
OF QUALITY







BYRON & CO
TOPSHAM, MASS.