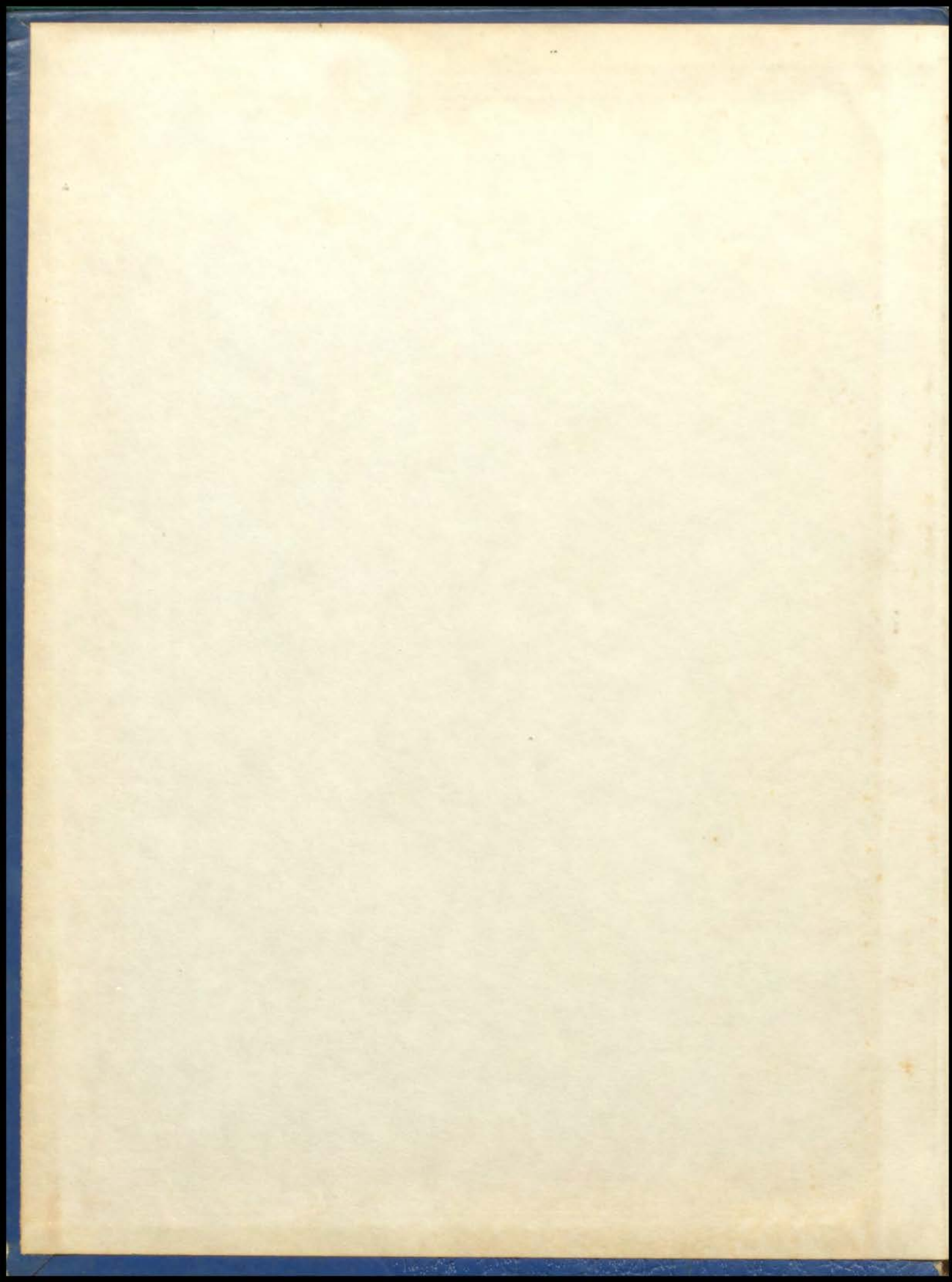




1  
9  
6  
1

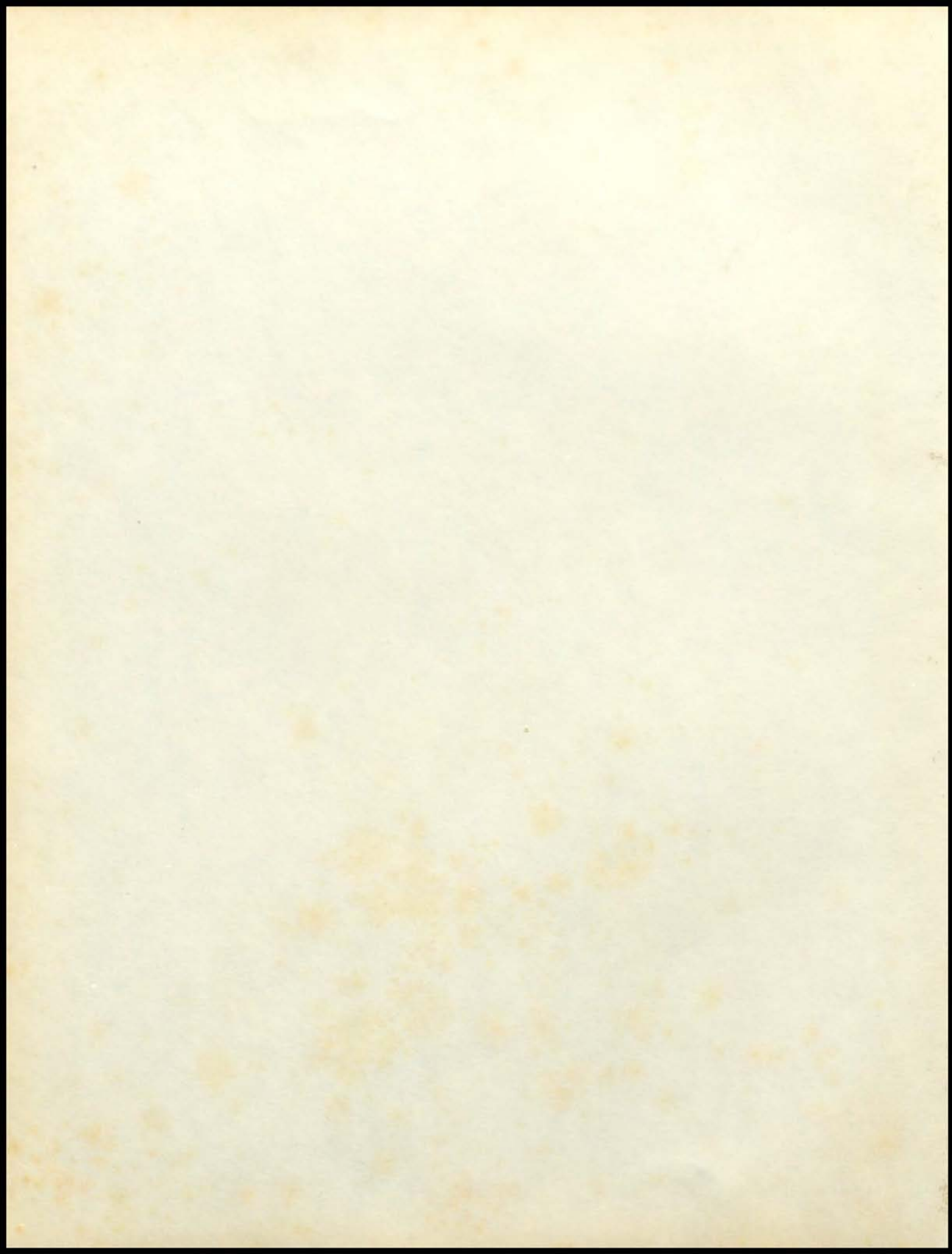
MIRAGE



1967

MIRAGE







**1961**

**MIRAGE**

**Published by the**

**staff of Ruskin High School**

**Hickman Mills, Missouri**

In earnest appreciation of his invaluable contributions to our school and to our community, we, the 1961 staff, dedicate this year's Mirage to

**MR. BLAINE E. STECK**  
principal, advisor, and friend of the students.



"I need some money, Pop"



Mr. Steck and Kevin

Born in Tarkio, Missouri in 1925, Mr. Steck received his bachelor's degree from Northwest Missouri State Teachers College and his master's degree from Missouri University. He came to Ruskin in 1955.

To this 'man behind the scenes,' who lends a helping hand to Ruskin students and to the people of the community, the 1961 Mirage is respectfully offered.

**DEDICATED**



Mr. Blaine E. Steck

**SINCERELY**





# TABLE of CONTENTS

Title	1
Dedication	2
Administration	5
Board of Education	5
Faculty	9
Classes	17
Activities	69
Athletics	99
Organizations	109
Advertisers	141



**B  
O  
A  
R  
D  
o  
f  
E  
D  
U  
C  
A  
T  
I  
O  
N  
A  
D  
M  
I  
N  
I  
S  
T  
R  
A  
T  
I  
O  
N**

# BOARD OF EDUCATION



LEFT TO RIGHT: Lyle Schultz, Donald Newkirk, R. E. Rhoades, Joseph Nesbit, assistant superintendent of schools; Tom Foraker, superintendent of schools; Billy Wall, president; Jane Leavens, secretary; A. A. McElroy, vice-president; R. C. Oliver, Jr., Paul Province, purchasing agent.

Few people realize the amount of time and effort given generously by our board of education to the welfare and the betterment of this school district. We hereby express to them our sincere gratitude.



# ADMINISTRATORS SPEAK

The spirit of Ruskin lies not in the brick, the stone, or the mortar. Rather it can be found in the friendly working relationship among the students and between the students and teachers. I am impressed by that spirit.

*Tom Toraker*



Superintendent of Schools



Assistant Superintendent of Schools

I am very much impressed with the morale and attitude of the faculty and students of Ruskin High School.

You can be justly proud of the privilege of being a member of such a fine school. I am sure you will live up to the responsibilities that go along with this privilege.

*Joe Nesbit*

# RUSKIN LEADERS SPEAK



Principal

The greatest good in any school year cannot be measured in dollars, or loving cups, or championships, or similar material standards; it can be measured only by that intangible yet vital force - school spirit.

School spirit? It cannot be defined in so many words, but it conveys a multitude of thoughts. The respect and sincerity with which you sing your school song; your pep at a game, and your attention during an assembly; the courtesy you show your teachers and guests; the enthusiasm and boundless energy with which you enter into each new activity - all of these are but phases of that loyalty which is your gift to Ruskin High School.

*William P. Matthews*

A good school is comprised of excellent teachers, appropriate buildings, adequate equipment, and high caliber students. These students must possess a sincere desire to improve, a willingness to work, and a high degree of loyalty. You students have lived up to these standards. Without your desire, work, and loyalty, Ruskin would not be the excellent school that it is today.

The continued success and bright future of Ruskin High School rests entirely upon the shoulders of you students. May your efforts never falter and your loyalty never cease so that Ruskin High School continues to be the best.

*Blaine E. Stess*



Assistant Principal



F  
A  
C  
U  
L  
T  
Y





JIM R. BODENHAMER

B. S., Central Missouri State College  
Woodworking, general shop, driver education, assistant football coach, track coach



RICHARD BOONE

B. S., Central Missouri State College  
Bookkeeping, business law, business arithmetic



MILDRED CASPER

B. S., Northwestern State College  
English, speech



MAURICE COTTER

B. S., Central Missouri State College  
Latin



MARY DOWELL

B. S., Northwest Missouri State College  
English, Spanish



RUSSELL DOWELL

B. S., Northwest Missouri State College  
Boys' physical education, basketball coach, assistant track coach



GLADDEN DYE

A. B., William Jewell  
Civics, world history, freshman boys' coach



FRED EICHHOLZ

B. S., Southwest Missouri State College  
Mathematics, physics



MABEL HALE

B. S. , Maryville State College  
Geometry, algebra II



PAUL HALL

B. S. , Northeast Missouri State Teachers College  
Metalwork, general shop, driver education



MARY FINN

B. S. , Mount Saint Scholastica College  
Girls' physical education



BESSIE GAISER

M. L. S. , Emporia  
Librarian



KATHLENE KECK

M. E. , George Peabody College for Teachers  
English



MARJORIE LANGFORD

M. E. , Central Missouri State College  
Counselor



HERBERT HAMANN

B. S. , University of Missouri  
Health, hygiene, physiology, general science, coach



EDWARD JOHNSTON

M. E. , University of Arkansas  
Counselor



FAYRENE MAY

B. A., Southeast Missouri State College  
English, social studies



DOROTHY MAUPIN

B.S., Central Missouri State College  
Typing, shorthand



DOUGLAS LAWRENCE

Assistant Principal  
M.ED., University of Kansas City  
Social studies



PAULINE MAPLES

B.S., University of Arkansas  
Home economics, related arts



VIRGIL MEREDITH

B.S., Central Missouri State College  
Social studies, mathematics



LOIS MOORE

M.S., University of Illinois  
English



CHARLES MAUPIN

B.S., Central Missouri State College  
Biology, chemistry



DOROTHA McCREARY

B.A., University of Kansas City  
English, communications





ROBERT MORGAN

B. S., University of Missouri  
Biology, general science



JOHN MURRY

M. S., Kansas State University  
English, counselor



WILLIAM NICHOLSON

M. A., Kansas State College  
Shop



RICHARD OLSEN

B. A., University of Kansas City  
General science, biology



CLOYD RAGNER

M. A., University of Kansas City  
Mathematics



MARION RAY

M. A., Northeast Missouri State College  
Biology, general science



VELMA REED

A. B., Central Missouri State College  
Art, art history



JAMES ROBERTS

B. S., Southwest Missouri State College  
World history, psychology



CHARLES SANDY

B. S., ROCKHURST  
English



M. JEAN SCOTT

M. S., Kansas State  
College  
Speech, dramatics



KENNETH SEWARD

B. M., Central College  
Band



ELLEN SKAGGS

M. A., Kansas City  
University  
Mathematics



MABEL E. SMITH

A. B., Central Missouri  
State College  
English



GEORGE STATHOS

B. S., Central Missouri  
State College  
World history, careers



DON STEWART

M. A., Missouri  
University  
English, French



MARGUERITE STILLEY

B. S., Iowa State Uni-  
versity  
Vocational home eco-  
nomics



SUE TRAVIS

B. S., Pittsburg Teachers College  
Typing, general business



JAMES WARD

B. S., Northeast Missouri State Teachers College  
Drafting, driver training road practice



FRED TARRY

B. M. E., University of Kansas  
Vocal music, music appreciation



TERRY TERRIL

B. S., Kansas State College  
American history, citizenship



RAY WILLIAMSON

B. S., Northeast Missouri State Teachers College  
American history, family living



ARCH WRISINGER

B. S., Central Missouri State College  
Secretarial practice, office practice, creative writing



JAMES WHITWORTH

B. S., Missouri Valley College  
American history, contemporary issues, social studies



LES WIGHT

M. F. A., K. C. U. Art Institute  
Art



# SPECIAL SERVICES



DAVID DE HELM



PAUL PROVINCE



ROBERT SHARP

These men, Mr. Province, Mr. DeHelm, and Mr. Sharp, are three people who are important to the operation of our school district. As the business administrator, Mr. Province is responsible for purchasing, maintenance, inventory, and budgetary control. Mr. DeHelm, the director of curriculum, is responsible for the development of curriculum studies, a guide for teachers, and a comprehensive test and evaluation program. The director of buildings and grounds, Mr. Sharp, is responsible for custodial care of the buildings and grounds and for both preventive and permanent maintenance of all the physical properties of the district.



JUANITA HUNT RN



HAZEL DOBBS RN



JOANN GUM

Two very important people in the district's organization are the school nurse and the speech correctionist. The school nurse, Mrs. Hunt, plans and carries out a good health program and maintains a health record for all students. Mrs. Gum, the speech correctionist, is responsible for a program through which she tries to help students with speech impediments.

Once a member of Ruskin's staff, Mrs. Dobbs was forced to resign due to illness. We will long remember her quiet efficiency and deep concern for the welfare of the Ruskin student body.



**C  
L  
A  
S  
S  
E  
S**

# 1961 CLASS OFFICERS



**RUSKIN HIGH SCHOOL DIRECTORY**

**TOM FORAKER**  
SUPERINTENDENT

**BLAINE E. STECK**  
PRINCIPAL

**WILLIAM P. MATTHEWS**  
ASST. PRINCIPAL

J. BODENHAMER	SHOP	G. STATHOS	118
R. BOONE	223	D. STEWART	201
M. CASPER	218	M. STILLEY	210
M. COTTER	180	F. TERRY	220
M. DOWELL	203	T. TERRILL	228
R. DOWELL	97M	S. TRAVIS	218
G. DYE	128	J. WARD	108
F. EICHHOLZ	110	J. WATWORTH	206
M. FINK	97M	L. WRIGHT	208
R. GABER	128	R. WILLIAMSON	230
M. HALE	118	A. WRINGER	224
P. HALL	SHOP		
H. HAMANN	130		
E. JOHNSON	221		
K. KECK	126		
M. LANGFORD	205		
D. LAWRENCE	208		
D. MCGRAW	111		
H. MAPLES	214		
C. MAUPIN	103		
D. MAUPIN	226		
F. MAY	222		
V. MCKEITH	202		
L. MOORE	225		
R. MORRIS	105		
I. MURPHY	LIB. OFF.		
J. NICKELSON	SHOP		
OLSEN	108		
RADNER	114		
RAY	107		
READ	211		
ROBERTS	216		
SANDY	184		
J. SEWART	207		
K. SEWARD	230		
E. SHAGGS	118		
M. SMITH	204		

**SECRETARIES**

M. CANTWELL  
M. GUYLER  
S. PHILLIPS

**LIBRARY**

W. THOMPSON  
V. TRIPPE

**CAFETERIA**

M. MC ROBERTS

**NURSE**

J. HUNT 215  
SPEECH CONNECTIONIST 215  
J. GUM 215

Vice-President: BILL LAWS  
Treasurer: GLENDA GERRED

President: MAX SINGER  
Secretary: CHERYL MACMILLAN





KIRK ALBRIGHT

Vocal Music 10, 11, 12;  
Choir Vice -President 12;  
Glee Club 11, 12; Mad-  
rigal 12



DOUGLAS  
ARMSTRONG

Transferred from Zeph-  
yihilk, Florida 12



ROGER ARMSTRONG

JCL 11, 12, Parliamen-  
tarian 11, 12; Honor So-  
ciety 10, 11, 12, Presi-  
dent 12; Kansas City  
Science Fair 9, 10, 11,  
12



CAROL ARBUCKLE

Class Treasurer 9; RGA  
A 9; Pep Club 9; Assem-  
blies 9, 11; Office Girl  
11, 12; Homecoming  
Royalty 9



RONALD ARNETT

Vocal Music 10, 12;  
Choir President 12;  
Madrigal 12; Honor So-  
ciety 11, 12; R Club 10,  
11, 12; Student Council  
10, 12; Assembly 10;  
Office Boy 12; Glee  
Club 12; Basketball 9,  
10; Football 9, 10, 11,  
12; Track 9, 10, 11, 12



RITA BAKER



ROSS BARBER



GLEN BADGER

Golf 11, 12



JOHN BARNES

Assembly 11; Band 9, 10, 11; Basketball 9, 10



PAULETTE BARTLEY

Office Girl 10, 11; Assembly 11; RGAA 10, 11; Pep Club 11



SIDNEY BATES

Hi-Light 12; Band 9, 10 11; Assembly 11



JACQUELINE BAYLESS

Vocal Music 9, 10, 11, 12, Librarian 12; FHA 11; RGAA 11; Pep Club 10, 11, 12; RHALS 12, Vice-President 12; Honor Society 10, 11, 12; Library 12; Glee Club 12; Spanish Club 12, Secretary



MARYANN BEATIE

Pep Club 11, 12, Secretary 12; Vocal Music 12; Assembly 10, 11, 12; Office Girl 12; Glee Club 12; Honor Society 11, 12; RGAA 11, 12



JUDY BELCHER

Vocal Music 12; Office Girls 12; FBLA 12



GORDON BELL

Hi-Light 12; JCL 12; Glee Club 12; Junior Play 11; Thespians 11; Vocal Music 10, 12



JUDY BEYER

Hi-Light 12; FBLA 12; Pep Club 11, 12



BRUCE BOWMAN



ROGER BRAY

Art Club 12



SHIRLEY BIVEN

Glee Club 9, Junior Play 11; Pep Club 10, 11, 12



NONA BIXLER

Pep Club 11, 12; FHA 11, 12, Officer 11; FTA 12; RGAA 11, 12; Office Girl 12



RITA BRISCOE

FTA 12; FHA 11, 12; Art Club 12; Office Girl 12



PEGGY BRIZENDINE

Art Club 11, 12



CHARLENE BRENNER

RGAA 9, 10, 11, 12; Vocal Music 11, 12; Glee Club 12; Library 9



GLENDA BRESHEARS

Mirage 12; Vocal Music 9, 10, 11; FHA 10, 11, 12, Treasurer 11, President 12; RGAA 10; Glee Club 9; Office Girl 12





THOMAS BURKETT



MARGARET  
BURTCHETT

Vocal Music 9, 10, 11, 12;  
R G A A 9, 10, 11, 12; Pep  
Club 9, 10, 11, 12; Assem-  
bly 9, 10, 11, 12; Office  
Girls 12; Glee Club 9, 10,  
11, 12; Honor Society 10,  
11, 12



RICHARD BROYLES

Assembly 11; Football 10;  
Track 10



CHERYL BUNCH

Vocal Music 9, 11, 12;  
FHA 11, 12; RGAA 9, 11,  
12; JCL 11; Pep Club 9,  
11, 12; Honor Society 11,  
12; Assembly 11; Junior  
Play 11; Office Girl 12;  
Glee Club 9, 11, 12



MARY CALLICOTTE

Vocal Music 9, 10; FTA  
12; JCL 12; Debate 11;  
Assembly 9, 12; Library  
9; Junior Play 9



LESTER CAMERON



CARYL BUTTERWORTH

Vocal Music 9, 10, 11, 12;  
RGAA 9, 10, 11, 12; Pep  
Club 9, 10, 11, 12; Assem-  
bly 9; Office Girl 12;  
Glee Club 9, 10, 11, 12;  
Pep Club Senior Checker  
12; RGAA Executive  
Board 12



ALEX CACIOPPO

Art Club 11, 12



KAREN CAMPBELL

RGAA 10, 11; Pep Club 10, 11, 12; RHALS 12; Library 12; Spanish Club 12, President 12



SANDRA CAMPBELL

Glee Club 9



ROBERT CARR

Vocal Music 10



MICHAEL CASADY

Band 9, 10, 11, 12; R Club 10, 11, 12; Office Boy 11, 12; Football 9, 10, 11, 12



GERALD CEULE



JAMES CEULE



LARRY CHALMERS

Honor Society 10, 11, 12, Vice-President 11; R Club 10, 11, 12; Sophomore Citizenship 10; Student Council 11, 12, Vice-President 11, President 12; Office Boy 10, 11, 12; Basketball 9, 10, 11, 12; Football 9, 10, 11, 12, Captain 12; Track 9, 11, 12



JIM CIPOLLA

Transferred from Versailles High School 11



CATHERINE CLARK

Transferred from Keytesville High School, Keytesville, Missouri 12



HAROLD CLARK



EDWARD CLINE

Vocal Music 9, 10; Football 9, 10; Track 10; Manager of Sports 10; Attended Ruskin School District 12 Years



KEVIN COCAYNE



ARTHUR COCKRUM

Band 9, 10; JCL 11, 12; Football 9, 10; Class Officer 9, 10, 11; Student Council 10; Attended Ruskin School District 12 Years



DOUGLAS COFFMAN

Office Boy 12; Track 9, 10; Football 9, 10



JOHN COLE

Basketball 11, 12



LARRY COLLINS





LINDA COOK

Mirage 12; Vocal Music 9, 11; FHA 10, 11, 12; Pep Club 9; Assemblies 9, 11; Library 11; Office Girl 12



JUDY COOPER

Vocal Music 9; Art Club 11, 12



DONNA CONKLIN

Hi-Light 12; Mirage 12, Circulation Manager; Vocal Music 11, 12; RGAA 9, 10, 11; RHALS 12; Honor Society 11, 12; French Club 12; Junior Stand; Assembly 9; Library 11, 12; Junior Play 11



CAROLYN COOK

Thespians 10, 11, 12; RGAA 9, 10; Assembly 9; Junior Play 11



VIRGINIA CRAWFORD

FHA 10, 11, 12, Officer 12; JCL 11; Office Girl 12



FRED COX



MARY COWDRICK

Hi-Light 12; Mirage 12, Co-Editor-In-Chief; Vocal Music 9, 10, 11, 12; FHA 10, 11, Officer 10; JCL 11; Pep Club 10, 11; National Honor Society 10, 11, 12; Assemblies 11, 12; Office Girl 12



ALANA CROSS

Transferred from Shawnee Mission North 11; FHA 11; RGAA 11; Art Club 11, 12



MARY DAMSGARD

Hi-Light 12; Vocal Music 9; RGAA 9, 10, 11, 12; JCL 10, 11; Pep Club 11; Assembly 11



DENNIS DAVIS

Vocal Music 9, 10, 11, 12; Glee Club 9, 10, 11, 12; Track 10



RICHARD CULVER

Transferred from De La-Salle 11



JAMES DAKAN

Band 9, 10, 11, 12; Track 9, 10



GEORGIA DIDDE

Transferred from Paseo High School 12



PEGGY DOTSON

RGAA 9, 10; Junior Play 11; Office Girl 9



JOANN DESCOMBES

Transferred from Leeton High School 12; FHA 12; RGAA 12



BETTY DICKINSON

Mirage 12; Vocal Music 9, 10, 11, 12, Treasurer 12; RGAA 9; Assembly 11, 12; Office Girl 12; Glee Club 10, 11, Secretary 11, Treasurer 11



RON DRAPER

Hi-Light 12; Honor Society 10, 11, 12; Office Boy 12; Basketball 9, 10, 11, 12; Spanish Club 12



SHIRLEY DUNBAR

Ushers 12; Thespians 12; Tech. Staff Junior Play 11, 12; Gym; Office Girl 9, 10, 11



JUDY DUNN

FBLA 12; Office Girl 11, 12



CLARETTA DURTSCHI

Hi-Light 12; Band 9, 10, 11, 12; Thespians 11, 12; Junior Play



WILLIAM EADS



WILLIAM EAGER

R Club 11, 12; Assembly 11; Office Boy 12; Football 9, 10, 11, 12; Track 10, 11, 12



MARTHA EARLY

Transferred from Fort Morgan High School 12



RONALD ELLIOTT

R Club 10, 11, 12; Usher Junior Play; Track 10, 11, 12





KAREN ELVING

Hi-Light 12; JCL 11, 12; National Honor Society 11, 12; Library 12



JOYCE ENDICOTT

Glee Club 12; Transferred from Omaha, Nebraska 12



LARRY ENGLE

Vocal Music 10, 12; Boys' Glee Club 12



JERRY FARMER

Vocal Music 12; R Club 12; Boys' Glee Club 12; Football 12; Track 12; Madrigal 12; Transferred from Paseo 12



SHEILA FAYARD

Mirage Staff 12; Vocal Music 12; Transferred from Bishop Hogan High 11



JOHN FINE

Transferred from Yakima, Washington 11



STEVE FINKS

Assembly 11; Manager of Sports 12



JAMES FLANAGAN

Vocal Music 10, 12; JCL 11; R Club 11, 12, Officer 12; Assembly 10, 12; Football 9, 10, 11, 12; Tennis 11, 12



RONALD FLORA

Mirage Business Manager 12; Band 9, 10, 11; FTA 12; JCL 11; Assembly 10, 11; Library 10; Gym Office 12; Football Manager 11; Track Manager 11; Usher 11



PAT FORDYCE

Vocal Music 11; RGAA 10, 11, 12; Pep Club 10; Office 12



FORREST FLETCHER



DONALD FLORA

Band 9, 10, 11, 12; JCL 11; R Club 11, 12; Gym Office 12; Football 9, 10, 11, 12; Usher 11



KATHERINE FREEMAN

Vocal Music 10, 11; Ushers 12; Thespians 12; Junior Play 11



LORA FROUNFELTER

Band 11, 12; Vocal Music 9, 10, 11, 12; RGAA 9, 10, 11, 12; Pep Club 10, 11; Madrigal 11, 12; Assembly 9, 10; Office 12; Glee Club 9, 10, 11, 12



HELEN FREEMAN

Vocal Music 10, 12; RGAA 9, 10; Office 12



SHARON FREED

Vocal Music 10; FTA 12; FHA 12; RGAA 11, 12; Junior Play 11; Office 12; Spanish Club 12



CONNIE GERKEN

Vocal Music 9, 10, 11, 12; FHA 11; RGAA 9, 10, 11; Pep Club 10



GLENDA GERRED

Mirage 12, Co-Editor-In-Chief; Band 11, 12, Majorette 11, 12; Vocal Music 9, 10, 12; Class Treasurer 12; RGAA 9, 10, 11, 12; Pep Club 9, 10, 11, Checker 11; National Honor Society 10, 11, 12, Secretary-Treasurer 12; Gym Officer 12; Glee Club 9, 11



RON GARNER



SANDRA GARRETT

Art Club 11, 12



GARY GODSEY

Vocal Music 10, 11, 12, President 10; National Honor Society 11, 12; R Club 12; Student Council 9, 12; Assembly 11; Gym Officer 12; Basketball 9, 10, 11, 12; Track 9, 10; Attended Ruskin School District 12 Years



VIRGINIA GOFORTH

Vocal Music 12; Pep Club 10, 11, 12, Cheerleader 12; Assembly 11



SUSANNE GILE

Vocal Music 9, 10, 11, 12; RGAA 9, 11, 12; Pep Club 9; Glee Club 9, 12; Art Club 11, 12



BILLY GLASSCOCK





NANCY GOODMAN

Transferred from Bishop Hogan High School 11; JCL 11



SHARON GRANGER

Vocal Music 9, 10; RGAA 9, 10, 11, 12; Pep Club 9, 10, 11, 12; Honor Society 10, 11, 12, Historian 12; Cheerleader 11, 12; Assembly 11; Contest 11



TOM GRAVES



BETTY GREATHOUSE



STEPHEN GREER



J. D. GRISSOM

Thespians 10, 11, 12, Best Supporting Actor 11, Junior Play 11, Stage Manager 11, 12, Assistant Manager 10, Contest Play 11, Starlight Theatre Student Advisory Board 11



JOHN GUERERO



NELL HAMMOND

Vocal Music 11, 12; RGAA 11, 12; JCL 11; Pep Club 10; French Club 12; Glee Club 11, 12



CHARLES HARRIS

Spanish Club 12; Assemblies 11, 12; Football 9, 10, 11, 12; Track 11, 12; R Club 12



MARTIN HARRISON

Transferred from Grandview High School 11



THALIA HARRISON

Transferred from Grandview High School 11



BARBARA HART

Vocal Music 9, 10; FBLA 12; RGAA 9; Pep Club 9



BRENDA HAUPT

Vocal Music 10, 11, 12, Secretary 12; JCL 11, Representative 11; Art Club 12



LELAND HEMME

Vocal Music 10



BEVERLY HENDRICKS

RGAA 9, 10; Pep Club 9; Library 11, 12



PHIL HESLEY

Band 9, 10, 11; Vocal Music 11; Football 9, 10, 11



MILDRED  
HOLLINGSHEAD

FHA 10; RGAA 9



SALLY HONEYCUTT

Glee Club 9



VICTOR  
HIGGINBOTHAM

Transferred from Half  
Way High School, Half  
Way, Missouri; Basket-  
ball 12



JOHN HOBSON



MILES HORN

Ushers 12; Thespians 11,  
12; FTA 12; Honor So-  
ciety 10, 11, 12; Spanish  
Club 12



BARBARA HUDSON

Band 9, 10, 11; Vocal  
Music 10, 12; FHA 12;  
RGAA 9, 10, 11, 12; As-  
semblies 9, 10, 11, 12;  
Junior Play; Office Girl  
11; Glee Club 9, 10, 11,  
12; Homecoming Atten-  
dant 10



GARY HOOTEN

Vocal Music 11, 12; As-  
sembly 9; Glee Club 9,  
10, 12



TOM HOPKINS

Assembly 11; Junior  
Play; Attended Ruskin  
School District 12 Years





SANDY HUNT

Vocal Music 9; RHALS 12; Library 11, 12



BARBARA IRELAND

Vocal Music 10; FHA 11, 12; RGAA 9; Honor Society 10, 11, 12



CHARLIE HUDSON

Vocal Music 10; Honor Society 10, 11, 12; Basketball 9, 10



DAVID HUGHES



CAROL IVERSON

Vocal Music 10; FTA 12; FHA 11, 12; RGAA 9; JCL 11; Pep Club 12; Junior Stand 11; Assembly 11; Art Club 11, 12



MARSHA JENSEN

JCL 11; RHALS 12; Library 9, 10, 11, 12; Art Club 12



PATRICIA IRELAND

RGAA 9, 11, 12; JCL 11; Pep Club 10, 11, 12; Assembly 11



JACK IRVIN

Band 9, 10, 11; JCL 11; R Club 12; Band Treasurer 11; Assembly 11; Track 11, 12



ELIZABETH JACOBY

Vocal Music 10; Assemblies 11; FHA 12; Thespians 10, 11, 12; RGAA 9, 10, 11, 12; Junior Play 11



EDWARD KINNEY

Vocal Music 9, 10, 11, 12; Football 10, 11



DEANNA KIRBY



TRUDY KOPF

Vocal Music 9, 10, 11, 12, Secretary 10; Class Secretary 10; FHA 11, 12, Vice-President 12; Mirage Staff 12, Art Editor 12; Madrigal 11, 12; Assemblies 9, 11; Office Girl 12; Glee Club 9, 10, 11, 12, President 11; Homecoming Princess 12



ROBERT KOSTECKA



JOYCE KRUEGER

Vocal Music 10, 11, 12; Thespians 9, 10, 11, 12; RGAA 10, 11, 12; Madrigal 11, 12; Assemblies 11; Glee Club 11, 12; Junior Play 11



SHANNON LAMAR

Vocal Music 9, 10, 11, 12; RGAA 9, 11, 12; French Club 12



JUDY LARABEE

RGAA 9, 10, 11, Office Girl 9, 10, 12



ROBERTA LA VELLE

Thespians 11, 12; FHA 12; JCL 11; Pep Club 12



BILL LAWS

Vocal Music 10, 11; Class Vice-President 12; R Club 10, 11, 12; Assemblies 10, 11, 12; Office Boy 11, 12; Basketball 10, 11, 12; Football 12; Track 10, 11, 12



MICHAEL LEAP

Transferred from Altamont, Kansas 12; JCL 12



JOYCE LEDBETTER

Vocal Music 9, 10, 11; Office Girl 9



WARREN LILLYGREN

Band 9, 10, 11, 12; Assembly 11



JEFFREY LINDSEY



KATHY LOCHERT

Library 11; Junior Play 11; Office Girl



KENNETH LYNN





JACK McNALLY

Band 9; Football 9, 10; Track 9; Football and Basketball Charter 11



BARBARA MENAUGH

RGAA 10, 11; Pep Club 10, 11, 12



CHERYL MacMILLAN

Vocal Music 10, 11; Class Secretary 12; RGAA 10, 11, 12; Pep Club 10, 11; Homecoming Princess 12



JANICE McCREADY

Mirage 12; Vocal Music 9, 10; Office Girl 12



CHARLES MILLER

Transferred from Blue Springs 10; Thespians 12; JCL 11, 12; Assembly 10, 11



THOMAS MOCKOBEY

Band 9, 10, 11, 12, Officer 11, 12; Class President 11; Student Council 11; Assembly 11; Office Boy 12; Basketball 9, 10, 11, 12; Football 10



GALE MICHENER

Transferred from Rams- tein, Germany 10; Vo- cal Music 10, 12; FHA 12; Pep Club 11, 12; Cheerleader 12; Assem- bly 11; Counselors Office 11, 12



VIRGINIA MILLER,

Vocal Music 9, 10; Thes- pians 10, 11, 12; RGAA 9, 10, 11; Honor Society 11, 12; Junior Play 11, 12, Student Director 12; Assembly 11; American Legion Contest 11, 12, 1st. Place District 12; NCCJ 10, 11; Speech Contests 11



DENNIS MORGAN

Band 9, 10, 11; Art Club 12



BARBARA MORRIS

RGAA 11; Office Girl 11, 12



VIRGINIA MOON

Vocal Music 12; RGAA 11, 12; Pep Club 11; Junior Play 11; Assembly 9, 10, 11, 12



DAVID MOORE



HAROLD NAGEL

Band 9, 10, 11, 12, President 11, Student Director 12; JCL 11, 12; Student Council 9, 10, 11, 12, Treasurer 12; Assembly 10, 11; 12 Years in Ruskin District



JOHN NEAL

Vocal Music 10; R Club 12; Student Council 10; Football 9, 10, 11, 12



LARRY MOZINGO



DAVID MULLIES

Golf 11, 12



KATHLEEN NEWMAN



CAROL NICHOLS

Thespians 10, 11, 12,  
Treasurer 11; RGAA 9,  
10, 11; Assembly 11;  
Junior Play 11; Vocal  
Music 9, 10



EARL NUCKOLLS



GRETCHEN  
OBERNDORFER

RGAA 9, 10, 11, 12; Art  
Club 11



RICHARD O'DELL

Transferred from Ark.  
Salem High School



ROY OEHLER

Band 9; Vocal Music 9,  
10; Hi-Light 12



WILLIAM OEHLER

Spanish Club 12



FRED OWINGS



BETTY PARKS

Transferred from Ray-  
town High 11; Assembly  
11; Mirage 12



BARBARA PAHLER

Vocal Music 12; Art  
Club 11; Glee Club 11



DAVID PARKER

Transferred from South-  
east High School 12



BEN PARSON



JERRY PAULL



EUGENE PAYNE



JEROME PENCE

Assembly 9; Junior Play;  
Junior Stand



PAMELA PENNINGTON

Vocal Music 9, 10, 11,  
12; RGAA 9, 10, 11, 12;  
Madrigal 11, 12; Assem-  
bly 9; Gym Office Girl  
12; Glee Club 11, 12,  
President 12





JAMES PERRY

Transferred from Neosho High School 12



SAUNDRA PETTY

Hi-Light 12; Band 9; Vocal Music 10; Thespians 10, 11, 12, Secretary 11, President 12; FHA 12; RGAA 9, 10, 11, 12; JCL 11, 12; Assembly 9, 10, 11, 12; Junior Play; Junior Stand



SHARON PERDUE

Vocal Music 11, 12; Class Officer 11; RGAA 11, 12, Recording Secretary 12; Honor Society 11, 12; French Club 12; Assembly 11; Glee Club 11, 12; Office Girl 12; Homecoming Royalty--Attendant 11, Queen 12



CLINTON PERRY

Band 9, 10, 11



LELA PRATER

Ushers 12; Thespians 12; Pep Club 12; Assembly 9, 10, 11, 12; Junior Play 11, 12; Office Girl 10, 12



EDDIE PRATT

Attended Ruskin School District for 12 Years



CHARLENE PIERCE

Mirage 12; Vocal Music 9, 10, 11, 12, Librarian 12; FHA 11, 12, Recreation Chairman 12; RGAA 9, 10, 11



J. C. PIERCE



JESS REED



TOM REYNOLDS

Hi-Light 12; Class Officer 9; Assembly 9, 10



RICHARD PRYOR



EDITH RAINEY



LINDA ROSE

Mirage 12; Vocal Music 9; RGAA 9, 10, 11, 12; RHALS 12, President 12; Library 12



SHARON ROUNTREE

FBLA 12; Office Girl 12



LARRY RHODES

Assembly 11



LARRY ROBERTS

Art Club 11



MARTY ROWE

Vocal Music 10, 11, 12; Usher 11; Assembly 10, 11; Boys Glee Club 11, 12; Track 11, 12



JIM RUNION

Band 9, 10, 11; Track 9, 10



DOROTHY RUSSELL

RGAA 9, 11, 12; Counselor's Office 12; Vocal Music 9, 10, 12



RONALD RUSSELL

R Club 11, 12; Usher 11; Assembly 10, 11; Boys Glee Club 11, 12; Basketball 9; Track 9, 10, 11, 12; Football 9, 10, 11, 12



RICHARD SANSTRA



THOMAS SCOTT



JOHN SEVIER

Vocal Music 12; Junior Play 11; Boys Glee Club 12; Homecoming Escort 11, 12



SANDY SHANKS



PATRICIA SIMPSON

Mirage 12; Vocal Music 9, 10, 11, 12; Class Secretary 9; RGAA 9, 10, 11, 12, Vice-President 11, President 12; Pep Club 10; Art Club 11; Art Contest 10, 11, 12



MAX SINGER

Vocal Music 10; Class President 12; Student Council 11, 12; Assemblies 10, 11; Basketball 9; Football 9, 10, 11; Track 9, 10, 11; Exchange Assembly 10



SUSAN SLOAN

Vocal Music 10; RGAA 11, 12; Pep Club 9, 10, 11, 12; Honor Society 10, 11, 12; Cheerleader 10, 11, 12, Head Cheerleader 11; Assembly 11; Office Girl 11



NONA SMITH

Mirage 12; FHA 10, 11, 12, Historian 11, Secretary 12; RGAA 9, 10, 11; Pep Club 11; Honor Society 11, 12; Office Girl 12; Spanish Club 12



RICHARD SMITH

Vocal Music 10



ROBERT SMITH

Vocal Music 10



WARREN STEEN

Band 10, 11, 12; Vocal Music 10; R Club 10, 11; Football 10; Track 10



KAREN STEPHENSON

FTA 12; FBLA 12; RGAA 11, 12; Transferred from Central High School 11





PAUL STRAWN



RAY STUBBS

Band 9, 10, 11; JCL 11;  
Attended Ruskin School  
District 12 Years



SANDRA STILLWAGON

Vocal Music 9, 10, 11,  
12; RGAA 9, 10, 11, 12;  
Office Girl 11



JONIEL STOLL

Transferred from Paseo  
11; Office Girl 12



ELLARD TAYLOR

Vocal Music 9, 10; Class  
Officer 10; Thespians  
10, 11, 12, Vice -Presi-  
dent 12; Junior Play 11;  
Speech Contest 11, 12;  
Best Actor 11; Student  
Advisory Board to Star-  
light



JUDITH THOMAS

Transferred from Central  
11; FTA 12; FBLA 12;  
Pep Club 12; National  
Honor Society 11, 12;  
Spanish Club 12



BETTY STURGILL



SUSAN SWISHER

RGAA 11; FHA 11; Vo-  
cal Music 11, 12; Pep  
Club 10, 11; Junior Play  
11; Office Girl 10



DAVID URION

Vocal Music 11, 12; Junior Play 11; Glee Club 11, 12; Madrigal 11, 12; Interscholastic Debate 10, 11, 12



MARY VALLIER

Vocal Music 9, 11; RG AA 11, 12; Pep Club 9, 10



BURT TOONE



KENNETH TULL  
Tennis 11; Track 10



BARBARA WALKER

Vocal Music 9, 10, 11, 12; RGAA 9, 10, 11, 12; Pep Club 11, 12; Assembly 11; Office 12; Glee Club 12; Attended Ruskins School District 12 Years



LINDA WALLACE

Library 9, 10, 11; Thespians 11, 12; RGAA 10, 11; Junior Play 11; Assembly 9; Glee Club 9



SHARON VAN LIEW



PHILLIP VIGO



CAROLYN WALLER

Transferred from Shawnee Mission North 11; Vocal Music 11, 12; Glee Club 12



WANDA WEDDINGTON

Hi-Light 12; RGAA 11, 12; Pep Club 9, 10, 11, 12, Officer 10; Cheerleader 11, 12; Assembly 11; Junior Play 11



SHARON WEDDLE

Vocal Music 9; Theatricals 12; RGAA 11, 12; Pep Club 11, 12; Assembly 10; Spanish Club 12



TIMOTHY WEIMER

Band 10



EDWARD WIBERG

Class Vice-President 11; Honor Society 10, 11, 12; R Club 10, 11, 12, President 12; Assembly 10, 11, 12; Junior Play 11; Basketball 9, 10, 11, 12; Football 9, 10, 11, 12; Track 9, 10, 11, 12



JUDITH WILLIAMS

Transferred from East High School 11



LUEWAN WILLIS

FHA 11; FBLA 12; Office Girls 12



BRUCE WILSON

Transferred from Central High School 10





REAH WILSON

RGAA 9, 10, 11, 12; Pep Club 9, 10, 12; Glee Club 12



RONALD WISEMAN

Vocal Music 10; Assembly 11; Glee Club 9; Football 10, 11; Basketball 9, 10; Track 10; Manager 12



SHERYL WITT

Hi-Light 12



DEANNA WOODARD



DONNA WORDEN

Transferred from Miami Senior High School, Miami, Florida



LARRY WORDEN

Band 9, 10, 11; Assembly 9, 10, 11



PAULA YAMASHIRO

Honor Society 10, 11, 12; Office Girl 10, 12



SONDRA YOUNG

Transferred from Raytown; JCL 11; Vocal Music 11





LINDA ZUROWESTE

Vocal Music 12

JUDY PETERMAN

Vocal Music 10, 11; RG  
AA 10, 11; Office Girl  
10; Art Club 11

Best Wishes,  
Glenda  
Derr

the next  
best of  
luck,  
Bill  
Gunn

Good luck,  
Mardinger

Best of  
luck  
Cory  
MacMillan

Ronald Flora

Linda Rose

Linda Cook

Ann  
Hamer

Charlene  
Pierce

Larry Gordon

Pat  
Lippson

Janice  
McCreedy

Margaret  
Burtchett

Mary Ann Beatie

Sheila Fayard

Sharon  
Bardue

Blenda  
Burdess

Burtchett

Trudy Kopf

Sharon

Donna Conklin

Mary  
Cowardrick

Betty Parks

Betty  
Dickinson

Sharon  
Granger

Johnny  
Neal

Nona Smith

Rita  
Brayles

Dickinson

Gary Godsey



L. Fisher  
President  
T. Sanders  
Vice-President  
M. Speicher  
Secretary  
P. Moffitt  
Treasurer

# CLASS OF 1962



S. Abney  
P. Albin  
R. Allen  
B. Anschutz  
G. Atkinson  
L. Aubuchon  
S. Badger



B. Baldwin  
J. Ballard  
E. Bates  
D. Bell  
D. Berglund  
P. Beyer  
J. Billman



M. Bollinger  
D. Bowling  
S. Braswell  
V. Bridgewater  
M. Briggs  
C. Brockmeier  
D. Brown



R. Buck  
D. Burgess  
J. Butler  
B. Byington  
J. Cagle  
R. Calegari  
M. Campbell



J. Caponetto  
M. Carter  
D. Casey  
C. Chapino  
D. Charpie  
S. Chesnut  
J. Cleveland



C. Cochran  
T. Cole  
M. Conley  
E. Contreras  
M. Cook  
C. Cooper  
J. Corder



H. Cornell  
S. Costilow  
J. Cox  
C. Craig  
L. Davis  
S. Debo  
D. Demetres



T. Dotson  
K. Dresej  
B. Drinkert  
S. Dunsworth  
G. Elliott  
J. Elliott  
J. Endicott



P. Enright  
B. Figgins  
E. Fisher  
P. Ford  
B. Frakes  
C. Franklin  
M. Frounfelzer



V. Gaines  
S. Garner  
M. Gibson  
A. Gipson  
J. Glasslock  
L. Gliem  
M. Godsey



D. Goodman  
M. Greene  
S. Grissom  
F. Haas  
D. Hadlock  
R. Hammer  
M. Hardman



J. Hart  
S. Hart  
D. Haupt  
R. Heinz  
R. Hemby  
M. Henry  
B. Herbert



S. Herman  
T. Hicks  
B. Higgins  
C. Hillje  
P. Hobson  
M. Holder  
B. Hombs



M. Hothan  
B. Hott  
L. Howard  
D. Isaacson  
S. Ideker  
R. Jacobs  
H. Jefferson



J. Jennings  
C. Jewell  
M. Johnson  
B. Jones  
S. Kearney  
R. Kennedy  
J. Kettler





C. Keys  
S. Kirke  
P. Kitch  
M. Klesath  
W. Lang  
H. Langston  
J. Laws

L. Lear  
N. Lee  
L. Lombardy  
C. McCune  
F. McDonald  
L. McMillen  
S. Majors



F. Mansfield  
J. Marfield  
R. Marlowe  
T. Mathis  
D. Matykiewicz  
B. Middaugh  
J. Miller

J. Mitchell  
K. Mitchell  
J. Monteleone  
M. Morgan  
R. Mort  
C. Nash  
J. Neilson

J. Orick  
S. Parks  
R. Paul  
E. Pence  
J. Peterman  
C. Pierce  
P. Pinkepank

G. Poindexter  
S. Porter  
L. Pratt  
E. Quigg  
S. Radford  
H. Rainey  
L. Ray

K. Reed  
J. Reynolds  
I. Robinson  
P. Sadler  
C. Schindler  
R. Schuch  
M. Schultz

B. Schumann  
T. Scott  
C. Scroggins  
G. Selle  
J. Sexton  
L. Shanks  
S. Dotson



L. Sharp  
 W. Shaw  
 J. Shelton  
 S. Sikirica  
 L. Sims  
 M. Sinks  
 P. Small



G. Smith  
 J. Smith  
 T. Smith  
 L. Stillwell  
 C. Stoffer  
 P. Stoup  
 D. Sudduth



J. Surber  
 G. Sweeney  
 V. Tanner  
 N. Taylor  
 R. Taylor  
 T. Taylor  
 L. Tomlinson



A. Troxel  
 G. Tucker  
 J. Tunnell  
 J. Ulery  
 C. VanGordon  
 B. Ward  
 A. Warren



D. Warren  
 L. Watkins  
 V. Weddle  
 T. Welborn  
 R. Welch  
 L. Wesner  
 L. Wheat



K. White  
 W. Whitney  
 L. Whitsitt  
 C. Williams  
 S. Williams  
 M. Wilson  
 P. Wolf



M. Woodrome  
 L. Woody  
 E. Worth  
 A. Yarbrough  
 J. York  
 C. Zook  
 J. Zumwalt





S. Lawhon  
President  
S. Timmins  
Vice-President  
G. Hammond  
Secretary  
B. Scott  
Treasurer

# CLASS OF 1963



J. Ackerman  
C. Adkinson  
J. Allen  
J. Alsip  
J. Andrus  
W. Applegate  
N. Armstrong



R. Armstrong  
M. Austin  
C. Baker  
J. Banta  
S. Barnes  
S. Barnes  
G. Bartly



P. Bartling  
P. Bartos  
J. Baxter  
J. Bingham  
M. Blackburn  
K. Blackford  
J. Blagg



C. Boehner  
B. Boltz  
J. Bowe  
B. Brown  
N. Brown  
P. Buchanan  
H. Buttner



T. Cady  
V. Caldron  
K. Calvin  
S. Cassidy  
S. Cerrone  
S. Christopherson  
J. Clark



C. Close  
B. Combs  
J. Cooper  
P. Cooper  
R. Copple  
E. Cordsen  
C. Cowdrick



B. Cowen  
B. Cox  
P. Coxe  
C. Crawford  
J. Crawford  
L. Crawford  
P. Creek



J. Criner  
 J. Cross  
 J. Darrah  
 G. Davis  
 B. Dayoub  
 K. Dillenger  
 D. Dunn



H. Dunsworth  
 J. Dyer  
 D. Elliott  
 J. Elliott  
 C. Elving  
 H. Emanuel  
 R. Emmons



V. Engle  
 L. Ewing  
 L. Falke  
 M. Fall  
 G. Faulkner  
 R. Faulkner  
 P. Ferina



L. Fiksdal  
 S. Filo  
 J. Fine  
 B. Fitzhugh  
 E. Flatters  
 B. Foster  
 J. Francis



J. Franklin  
 P. Franklin  
 C. Fromhold  
 S. Galler  
 G. Gant  
 B. Gash  
 M. Gerken



B. Ghean  
 E. Gibbons  
 N. Glunt  
 E. Goble  
 B. Goforth  
 D. Goings  
 C. Graham



S. Grissom  
 P. Hadden  
 J. Hammer  
 G. Hammontree  
 T. Hammontree  
 H. Haning  
 R. Hansen



C. Hardman  
 L. Harrington  
 D. Harris  
 C. Hart  
 R. Heady  
 C. Hedger  
 T. Zuroweste





R. Hedrick  
 B. Hemme  
 C. Hickman  
 D. Holderman  
 W. Holloway  
 C. Hosey  
 R. Hothan

L. Howard  
 L. Hudnall  
 D. Hummel  
 R. Hummel  
 J. Hurst  
 M. Ireland  
 M. Ireland



J. Irion  
 L. Jackman  
 C. Jackson  
 G. Jennings  
 R. Jenson  
 D. Johnson  
 J. Johnson

S. Jones  
 K. Juedem  
 R. Justice  
 B. Kelley  
 N. Kelly  
 K. Kemp  
 K. Kemper

R. Kernodle  
 B. Kildow  
 A. King  
 C. Klassy  
 G. Kline  
 J. Knapp  
 J. Knitter

F. Koonce  
 S. Koppitz  
 D. Kostecka  
 J. Lanford  
 S. Lang  
 S. Laughman  
 L. Lawson

S. Liscata  
 L. Lightfoot  
 L. Lillygren  
 R. Loflin  
 L. Loveland  
 R. Lower  
 W. McCune

M. McDaniel  
 C. McGuire  
 A. McMillen  
 R. Mahan  
 S. Mais  
 B. Major  
 L. Markus



J. May  
 P. Menaugh  
 G. Mercet  
 D. Messmer  
 S. Michael  
 D. Miller  
 J. Miller



R. Miller  
 R. Miller  
 G. Mills  
 J. Moberly  
 J. Mockobey  
 D. Moore  
 L. Moore

T. Moore  
 D. Morgan  
 A. Morris  
 L. Morrison  
 P. Moulden  
 S. Mumper  
 M. Neal



G. Neeley  
 M. Neff  
 L. Nespica  
 P. O'Bryan  
 H. Oldham  
 D. O'Neill  
 L. Palmer



K. Paterson  
 D. Peek  
 R. Perkins  
 J. Perry  
 L. Perry  
 J. Peterson  
 W. Peterson



J. Petrie  
 B. Pickett  
 J. Pierson  
 M. Prater  
 S. Pryor  
 C. Pulliam  
 T. Railey

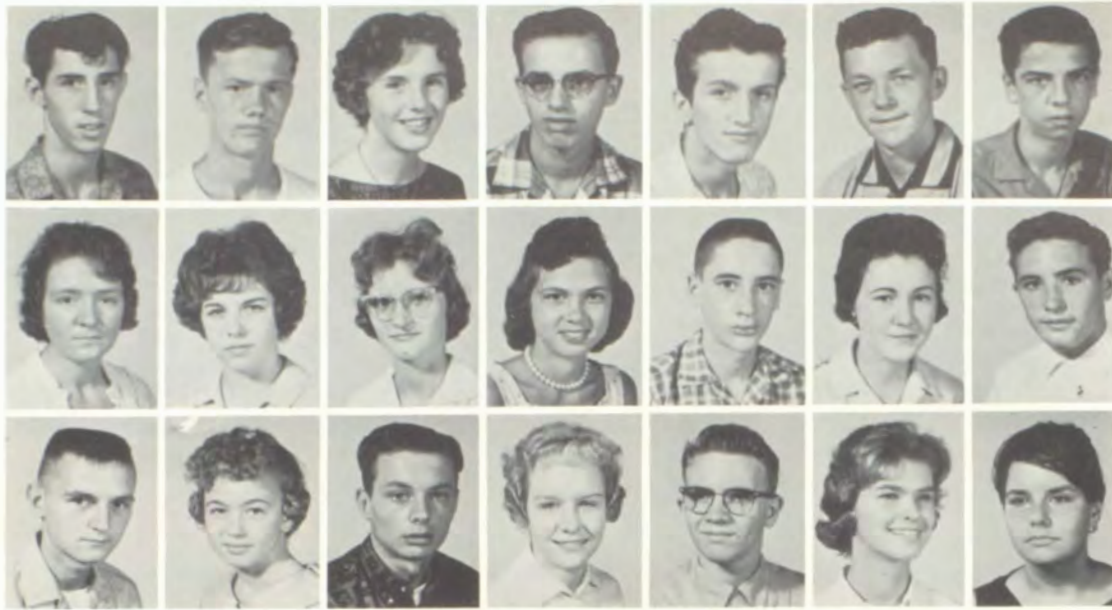


P. Ralston  
 S. Reece  
 B. Reuter  
 J. Rhodes  
 R. Richards  
 C. Roberts  
 L. Roberts



L. Robinson  
 H. Rookstool  
 P. Rose  
 B. Ross  
 S. Ross  
 M. Rowland  
 B. Roysse

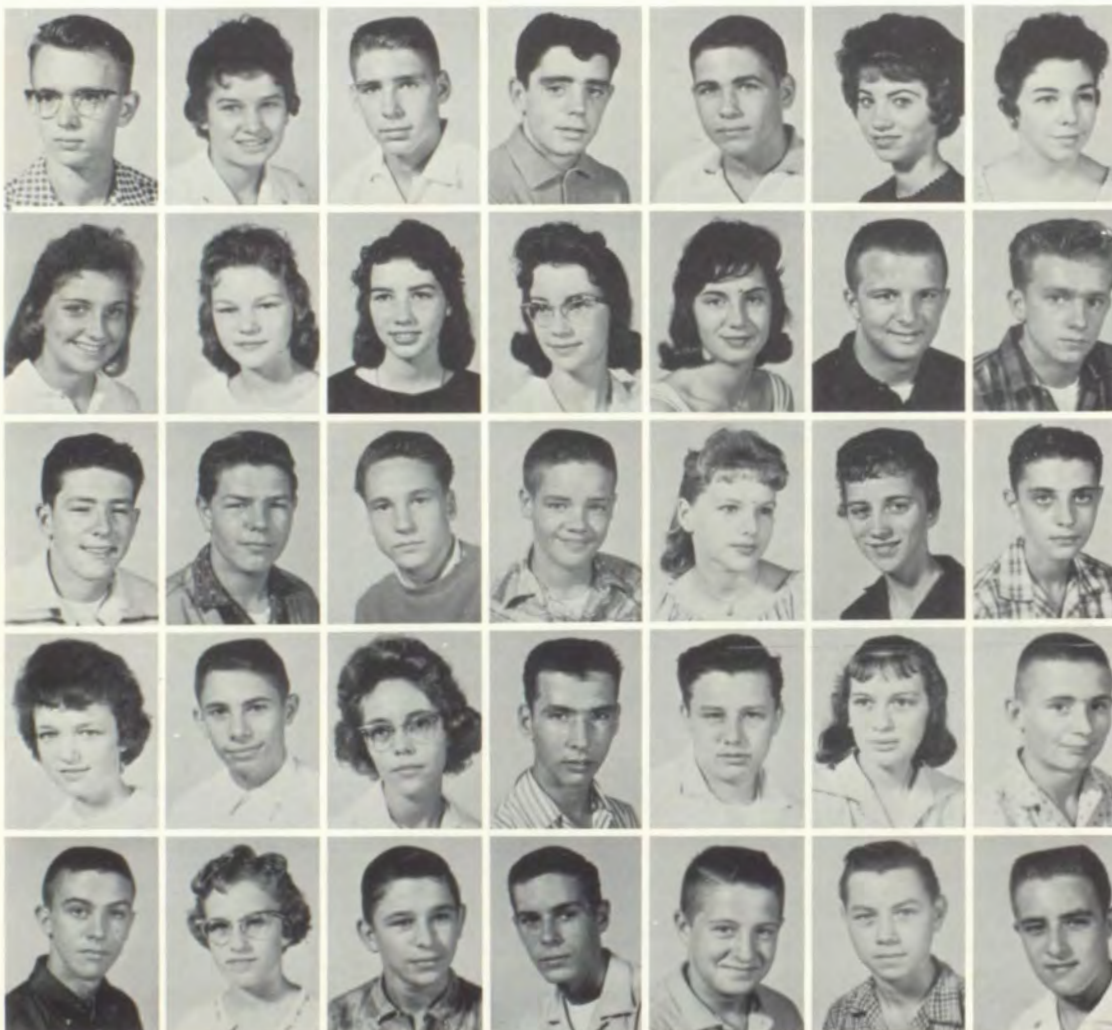




J. Royster  
M. Runions  
C. Sadler  
V. Schroer  
E. Searing  
C. Sellars  
L. Sellmeyer

R. Sells  
M. Sessa  
L. Shanks  
V. Sharpe  
J. Shepard  
M. Skaggs  
J. Sledge

J. Slocum  
C. Smith  
G. Smith  
G. Smith  
L. Smith  
B. Snider  
L. Sparks



R. Sparks  
H. Spear  
S. Sproul  
B. Steele  
W. Stevens  
J. Stewart  
Z. Stewart

J. Stubbs  
S. Stuerke  
B. Sturgill  
D. Sturgill  
B. Taylor  
D. Taylor  
R. Taylor

E. Thomson  
R. Tierney  
C. Trospen  
D. Troxel  
K. Tucker  
H. Twyman  
J. Valenti

P. VanGordon  
B. Vazzano  
M. Vogler  
R. Vunevich  
H. Waldrop  
L. Weddle  
J. Wester

R. Wetmore  
G. White  
L. Wilcox  
D. Williams  
D. Wilson  
L. Wilson  
D. Winfield



S. Wolfe  
 P. Wolff  
 L. Wood  
 C. Wooldridge  
 P. Woolsey  
 C. Worth  
 R. Worth



D. Wright  
 J. Wright  
 L. Zion



NOT PICTURED

J. Engle  
 R. Faulkner  
 N. Lines  
 F. McIntosh  
 C. Meyers  
 L. Nickols  
 G. Test



Hey, what's the joke!



Sophomores really eat!



J. Nielson  
President  
B. Miller  
Vice-President  
B. Kee  
Secretary  
G. Kennedy  
Treasurer

# CLASS OF 1964



G. Abbiatti  
D. Abney  
S. Abraham  
B. Adams  
L. Adams  
J. Agee  
J. Agnew

W. Alderson  
F. Anderson  
R. Anderson  
A. Applegate  
R. Armstrong  
P. Arnsmeier  
E. Atkinson

D. Aubuchon  
B. Aue  
G. Badger  
N. Bailey  
K. Baker  
B. Ballard  
R. Barnes

T. Barnes  
J. Baxter  
C. Bayless  
V. Beach  
D. Becklean  
R. Beeson  
D. Bell

S. Benneson  
P. Beyer  
D. Blackburn  
D. Boatwright  
D. Bollin  
T. Bondi  
L. Boone

A. Bost  
M. Bowling  
C. Bowman  
S. Bowman  
R. Brandt  
B. Brenton  
G. Breshears

L. Brewer  
J. Brockmeier  
G. Bron  
T. Broyles  
J. Brown  
G. Bruwdage  
G. Burkett



J. Bybee  
P. Cacioppo  
P. Caldwell  
B. Calhoun  
D. Campbell  
T. Campbell  
M. Carty



R. Casteel  
D. Clapp  
B. Clark  
C. Clark  
S. Clarke  
V. Cochran  
J. Coffman



J. Coker  
D. Collier  
M. Colyer  
D. Compton  
L. Compton  
R. Cooper  
S. Cooper



D. Costan  
G. Costilow  
J. Cox  
J. Creason  
G. Cunningham  
K. Curliss  
P. Curtis



L. Dart  
S. Davis  
M. Davolt  
S. Day  
H. Dennis  
L. Deobler  
F. DeWeese



S. Dolstein  
J. Dougan  
E. Dowell  
R. Dryer  
R. Duer  
G. Dunn  
K. Durtschi



D. Edwards  
D. Embry  
J. Eyman  
L. Faulkenberry  
R. Fields  
C. Fink  
R. Finlay



J. Flynn  
R. Foster  
N. Fox  
F. Frazier  
R. Frentrop  
L. Fulkenson  
A. Fuller







V. Gentry  
M. Gerken  
M. Gerred  
D. Gibson  
L. Gibson  
C. Glaspey  
R. Glaspey

R. Glover  
L. Goble  
J. Gordon  
J. Gortey  
W. Gramzinski  
R. Greene  
G. Guerrero



G. Haggadone  
M. Hamilton  
V. Hamilton  
J. Hammer  
T. Hammond  
B. Hand  
C. Hansen

E. Hardy  
J. Harmon  
B. Hart  
L. Hayworth  
D. Hedrick  
S. Helbling  
N. Hendrix

L. Herring  
P. Hichen  
S. Hickerson  
R. Hickman  
J. Hildebrandt  
R. Hill  
K. Hock

J. Holbrook  
L. Hollingshead  
D. Hollingsworth  
D. Holt  
M. Honeycutt  
R. Hooper  
B. Hoover

R. Hudson  
W. Hunnicutt  
S. Husby  
S. Hutchinson  
K. Ireland  
P. Irvin  
V. Jacoby

D. Jankovich  
B. Jeffries  
G. Jennings  
J. Johnson  
G. Johnston  
L. Johnston  
D. Kachel

M. Kays  
 K. Kelley  
 D. Kelley  
 S. Kennedy  
 J. Kennell  
 B. Kernodle  
 J. King



K. Kinnamon  
 S. Kinsey  
 P. Kirks  
 N. Kissinger  
 G. Klassy  
 R. Kobel  
 L. Koggie



R. Koppitz  
 B. Krause  
 S. Krause  
 B. Kurtz  
 B. LaCroix  
 D. Lacy  
 T. Lakey



J. Lane  
 S. Lavender  
 L. Leap  
 D. Leavens  
 C. Ledbetter  
 C. Ledbetter  
 J. Ledbetter



D. L'Homedieu  
 R. Lillygren  
 K. Livingston  
 N. Lockwood  
 K. Lorenz  
 N. Lowther  
 M. Lundeen



N. Lunn  
 L. Lusby  
 H. McHenry  
 J. McIntyre  
 M. McKitrick  
 N. McMillian  
 L. McDaniel



C. McDonald  
 R. McFerrin  
 G. Mackey  
 J. Mackler  
 R. Mahoney  
 S. Malaney  
 S. Malicoat



S. Mann  
 M. Mansfield  
 B. Mapson  
 C. Marlowe  
 L. Mathes  
 J. Maxwell  
 R. Mayhugh







P. Maynard  
 C. Merchant  
 C. Metcalfe  
 L. Metheny  
 C. Miller  
 C. Miller  
 E. Miller  
  
 L. Miller  
 J. Mills  
 P. Mitchell  
 P. Moffitt  
 D. Moll  
 F. Montaleone  
 J. Monteleone  
  
 H. Moore  
 L. Moppin  
 K. Moretina  
 M. Morris  
 D. Morrison  
 D. Mort  
 N. Mullen



M. Mumper  
 J. Nash  
 R. Nederman  
 P. Neff  
 W. Nieghbors  
 P. Neihoff  
 M. Newman  
  
 B. Nielson  
 G. Novak  
 C. Norman  
 A. North  
 F. Northington  
 R. Nutt  
 E. O'Dell  
  
 G. Oehring  
 S. O'Hara  
 C. Oldham  
 D. Oliver  
 B. Opie  
 M. Ortega  
 D. Ostroin  
  
 M. Owens  
 M. Palmer  
 S. Parker  
 B. Parks  
 L. Paul  
 J. Pederson  
 D. Petrie  
  
 S. Petty  
 J. Portman  
 R. Postema  
 D. Powers  
 P. Prewitt  
 V. Principe  
 T. Rankle

J. Raupp  
 D. Raymond  
 C. Reece  
 N. Reid  
 C. Rhoades  
 L. Rhoads  
 S. Robb



J. Robbins  
 S. Robbins  
 J. Roberts  
 D. Robertson  
 M. Robinson  
 C. Rough  
 M. Rowe



M. Rudy  
 S. Salley  
 T. Schoor  
 K. Scott  
 R. Scoville  
 J. Searing  
 D. Shaffer



S. Shamow  
 M. Shanahan  
 W. Sharp  
 D. Shehan  
 E. Shilt  
 N. Shireman  
 M. Sikirica



L. Simmons  
 J. Simms  
 B. Simpson  
 S. Sims  
 B. Smith  
 C. Smith  
 T. Smith



V. Smith  
 A. Smoot  
 R. Snow  
 G. Spears  
 M. Spellen  
 J. Stanley  
 J. Steen



W. Stegner  
 G. Stevens  
 G. Stevens  
 S. Stevens  
 S. Stewart  
 R. Stillwagon  
 G. Stoffer



B. Swisher  
 B. Sykes  
 B. Taylor  
 L. Taylor  
 V. Taylor  
 D. Thomas  
 D. Thompson







B. Thompson  
G. Thompson  
P. Thompson  
J. Thrift  
J. Timmerman  
A. Trahue  
C. Traner

S. Traywick  
S. Tribble  
P. Trosper  
S. Truesdell  
G. Tucker  
R. Tull  
B. Turecek

R. VonBebber  
P. VanLiew  
L. Vaughn  
P. Vaughn  
D. Vaught  
J. Vernon  
K. Vernon

G. Walker  
B. Wallace  
M. Wallace  
E. Warren  
P. Warren  
G. Webb  
P. Webber



J. Wehner  
G. Welch  
J. Welch  
S. Wendlandt  
S. White  
J. Wiberg  
C. Wilkinson

R. Willhite  
M. Williams  
K. Witte  
M. Wochner  
R. Woolery  
D. Wortman  
C. Worth



R. Xanders  
P. Zagurski  
B. Zeiler  
F. Zumwalt  
H. Zumwalt  
W. Zumwalt



E. Bruner  
 M. Grissom  
 R. Frede  
 J. Hamilton  
 J. Hurelbrinks  
 G. Lawing  
 D. Lutes



G. Miller  
 J. Mitchell  
 E. Murray  
 R. Nagel  
 L. Smith  
 L. Smith



NOT PICTURED:

C. Bailey  
 J. Bowman  
 R. Cauthon  
 A. Madale  
 L. Roland  
 M. Ross  
 L. Williams



Green Ruskinites



Polish that Eagle, frosh!



Gee, what a pretty mural.

# LATE ENROLLEES

We sincerely welcome all new students and late enrollees to Ruskin High School and hope that their years here will be successful.



ROW ONE: B. Couch, H. Clemmons, D. Bowling, R. Beecham, D. DeLapp, S. Walker. TOP ROW: J. Couch, V. Clemmons, P. Hesam, J. Gibson, D. Beecham, D. Faulkner, J. Hinton.

Ruskin has grown greatly since 1902 when the district first became consolidated. In 1904 when the high school was first built, 46 students attended. Now there are 1170 in the high school. In the freshman class 400 students attend--as many as there were in all four classes during the school year of 1955-56, just 5 years ago. Next year an estimated 1440 students will attend Ruskin--quite a difference from 1904.

A  
C  
T  
I  
V  
I  
T  
I  
E  
S







QUEEN SHARON PERDUE

# 1960 HOMECOMING



QUEEN SHARON PERDUE  
SENIOR PRINCESSES: Trudy Kopf and Cheryl MacMillan  
ATTENDANTS: Rosalee Calegari, Chery Fromhold, Nancy Fox



Mr. Steck Crowns Queen



Queen and Court at Homecoming Dance

THIS PAGE SPONSORED BY BURTON'S JEWELERS, TRUMAN CORNERS  
SO 1-8826



# HOMECOMING GAME



1960 Football Captain  
Larry Chalmers



1960 Homecoming Game



Eagles plow through goalposts to battle Yellowjackets.

SPONSORED BY LYON'S DRUGS, 11305 HIWAY 71, HICKMAN MILLS - SO 1-7365



# MIRAGE



SEATED: T. Kopf, art editor; A. Warren, advertising manager; G. Gerred, co-editor-in-chief; M. Cowdrick, co-editor-in-chief; D. Flora, business manager; D. Conklin, circulation manager. ROW ONE: P. Simpson, art staff; L. Cook, production staff; N. Smith, activities editor; C. Pierce, organizations editor; M. Speicher, art staff; D. Isaacson, photographer. ROW TWO: L. Whitsitt, junior editor; G. Breshears, faculty editor; J. McCready, freshman editor; B. Dickinson, senior editor; S. Fayard, activities editor; L. Rose, sophomore editor; D. Burglund, production staff; Mrs. Lois Moore, sponsor; B. Parks, art staff, not pictured.



MARY  
COWDRICK  
Co-Editor-  
In-Chief



MRS. LOIS  
MOORE  
Sponsor



GLEND  
GERRED  
Co-Editor-  
In-Chief

This is the first year that the Mirage has been purely an extra-curricular activity. In previous years, this publication, along with the Hi-Light, has been produced as a part of the work of a subject in the school curriculum.

The members of the staff are chosen on the basis of the following factors; English proficiency, recommendation by counselors and teachers, and their willingness to work.

The members of this year's staff and Mrs. Lois Moore, the sponsor, have spent many hours of hard work in their effort to make this 1961 yearbook the finest which Ruskin has ever had.

# RUSKIN



# HI-LIGHT

NG OUT  
 ol spirit?  
 school s  
 ears," re  
 the other  
 magazine  
 we ev  
 s that?  
 there is  
 at what  
 new Figh  
 no one s  
 game th  
 or six p  
 it with t  
 ing? Wh  
 ool spirit  
 are chea  
 plovers  
 with a d  
 an't add  
 did you  
 at's our d  
 ool spirit?  
 wrong i  
 e through  
 suppose s  
 s one th

e to be called A  
 the name comin  
 English word halv  
 ay, holy. The Fea  
 occurred, and st  
 ember 1; the ev  
 umber 31.  
 grew up about th  
 he idea that on th  
 ts of the departe  
 to visit their o  
 as the beginning  
 oughts about th  
 ent to the exte  
 e would don mas  
 e the spooks awa  
 still survives wh  
 hood sprites do  
 tumes and wies  
 rom house to hou  
 e householders o  
 s goodies with th  
 or-Treat!"



LEFT TO RIGHT, ROW ONE: R. Oehler, G. Bell, M. Cowdrick, S. Bates, R. Draper. ROW TWO: M. Damsgard, W. Weddington, S. Petty, K. Elving, A. Wrisinger. ROW THREE: C. Witt, D. Conklin, T. Reynolds, J. Beyer, C. Durtschi.

## STATION

careful of, however, and  
 building. Why, we keep  
 ing spotless. Of course  
 black marks in the hall  
 chairs have been broken  
 g back on them . . ."  
 friend said, "School spirit  
 g out our ears' . . . isn't

## KIN HI-LIGHT

n-Chief .... Mary Cowdrick  
 Gordon Bell  
 Manager .... Sidney Bates  
 Editor ..... Ron Draper  
 pher .... Roy Oehler, III  
 ..... Arch Wrisinger

ed monthly by the Crea-  
 ting class, Ruskin High  
 Hickman Mills, Missouri.  
 ear.

T-LIGHT is a member of  
 ouri Interscholastic Press  
 on, and Quill and Scroll.

d a second class matter,  
 r, 1960, at the Post Of-  
 ansas City, Missouri, un-  
 ct of March 3, 1879. Sec-  
 postage paid at Kansas  
 sori.

through the French art division  
 of the Nelson Art Gallery.

### RUSKIN ON BANDSTAND

"Oh, oh, the camera is coming  
 toward us," Ruskin High School  
 students whispered to each other  
 as they appeared on Bandstand  
 on October 19. From 4 o'clock to  
 4:30 this group taped a program  
 which will be shown November 1  
 on channel 9 at 4:30 p.m.

As the students went on televi-  
 sion "live" at 4:30, Harold Nagel  
 and Ginnie Miller talked with the  
 emcee about the activities in  
 which Ruskin will be participating  
 later this season.

A surprise dance feature was  
 held in which all dancers changed  
 partners during one record. At the  
 end of this feature Gene Payne  
 and Mary Cowdrick, his partner  
 at the time, each won record al-  
 bums. Gary Godsey and Betty  
 Dickinson won the dance contest  
 held and each received a sweater.

The two sponsors of the group  
 who went to Bandstand were Mr.  
 William P. Matthews and Mrs.  
 Marjorie Langford. They are the  
 sponsors of the Student Council.

has for high school work. High  
 school freshmen are not expected  
 to do so well on it, as it also is  
 given to college freshmen. Accord-  
 ing to information obtained from  
 this test, counselors are able to  
 advise the students concerning  
 educational and vocational plan-  
 ning.

All the test scores are recorded  
 sent to  
 on re-



ARCH WRISINGER  
 Sponsor

also in  
 and plans  
 for the immediate future of the  
 club, among them the decorating  
 of RHS halls with posters for Na-  
 tional Education Week.

Mr. Joseph Nesbit, now servin  
 his second year as our assistan  
 superintendent of school, is a ma  
 of wide experience in the field  
 education. He was principal  
 Burke for three years and direc  
 tor of curriculum in this distric  
 for two years. He began his ca  
 reer by teaching in rural school  
 for nine years and in a high school  
 for two years. He was an elemen  
 tary school principal in Butler fo  
 six years.

After graduation from Clinto  
 High School in Clinton, Missouri  
 Mr. Nesbit attended Central Mis  
 souri State College in Warrens  
 burg, where he received a B.S.  
 in Education. He received hi  
 M.S. in Education at the Univer  
 sity of Kansas City and then at  
 tended Missouri University.

Mr. Nesbit is married and th  
 father of two children. His son i  
 in the second grade and his daugh  
 ter is in the first grade at Burke

Traveling, hunting, fishing, an  
 gardening are his favorite pas  
 times in the summer. In the winte  
 he enjoys reading.

Mr. Nesbit feels that this ha  
 been a very successful year s  
 far.





"I'm getting dizzy again."

M. JEAN SCOTT  
Director



"So this is what you had in mind?"

# "THE SILVER WHISTLE"



One big bunch of hams--but, oh, so much hams!

## CAST

Jane Ballard  
Barbara Anschutz  
Ron Welch  
Sally Braswell  
Sharon Sikirica  
Larry Wesner  
Tim Smith  
Shirley Abney  
Dave Goodman  
Pete Beyer  
Ron Jacobs  
Bamey Byington  
Phil Pinkepank  
Rodney Schuch  
Mike Henry

Virginia Miller  
Student Director

Published by permission of the  
Dramatic Publishing Co. of  
Chicago.

"You wouldn't dare!"



Dress rehearsal break-down.



# SPEECH ARTS

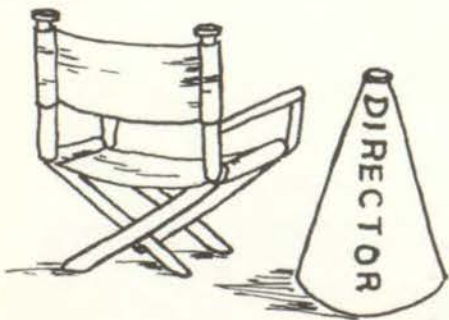


*Watch the speaker*



Research comes first

Do it this way





Make up too!



Will he wear this!



Talent is appreciated

Group acting



# DEPARTMENT



Caryl Butterworth  
John Sevier

BEST  
PERSONALITY



MOST POPULAR  
Sharon Perdue  
Larry Chalmers

BEST  
STUDENTS



Glenda Gerred  
Roger Armstrong



Wanda Weddington  
Max Singer

BEST  
ALL-AROUND

MOST  
DONE FOR  
THE  
RUSKIN



BEST LOOKING  
Cheryl MacMillian  
Ron Arnett



Margaret Burtchett  
Harold Nagel



Betty Dickinson  
John Neal

SWEETEST  
AND  
NICEST  
GIRL  
BOY

FIGURE  
AND  
BEST  
PHYSIQUE



Mary Vallier  
Gary Godsey



# ALL-STARS



Cheryl Bunch  
Miles Horn

M  
O  
S  
T  
L  
I  
K  
E  
L  
Y  
T  
O  
S  
U  
C  
C  
E  
E  
D



BEST DANCERS  
Sandi Stillwagon  
Fred Owings

C  
O  
M  
E  
D  
I  
E  
N  
N  
E  
A  
N  
D  
C  
O  
M  
E  
D  
I  
A  
N



Lora Frounfelter  
Bill Eager



Trudy Kopf  
Gordon Bell

B  
E  
S  
T  
D  
R  
E  
S  
S  
E  
D



BEST ATHLETES  
Sue Sloan  
Ed Wiberg

A  
N  
D  
C  
A  
S  
S  
A  
N  
O  
V  
A  
C  
L  
A  
S  
S  
F  
L  
I  
R  
T



Dot Russell  
John Hobson



Mary Ann Beatie  
Tom Mockobey

B  
E  
S  
T  
M  
U  
S  
I  
C  
I  
A  
N  
S



Mary Ann Damsgard  
John Barnes

M  
O  
S  
T  
F  
U  
N  
T  
O  
B  
E  
W  
I  
T  
H



Student Council



Christmas



G  
o  
o  
d  
B  
y  
e  
M  
r.  
M  
a  
t  
t  
h  
e  
w  
s



Pep Session



# ASSEMBLIES



Student Council



Senior



Senior



Concert



Pep



# GIRLS' P. E.



"Outa' my way!"



SQUADS!!!



Squad 4's Empire



Miss Mary Finn  
Physical Education  
Teacher

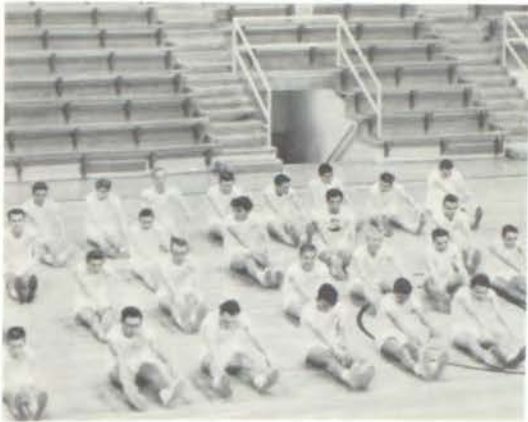


The Fall of Squad 4's Empire



READY... AIM... FIRE!!!!!!

# BOYS' P. E.



1, 2-buckle your shoes



At the sound of the bell



Mr. Russell Dowell  
Physical Education  
Teacher



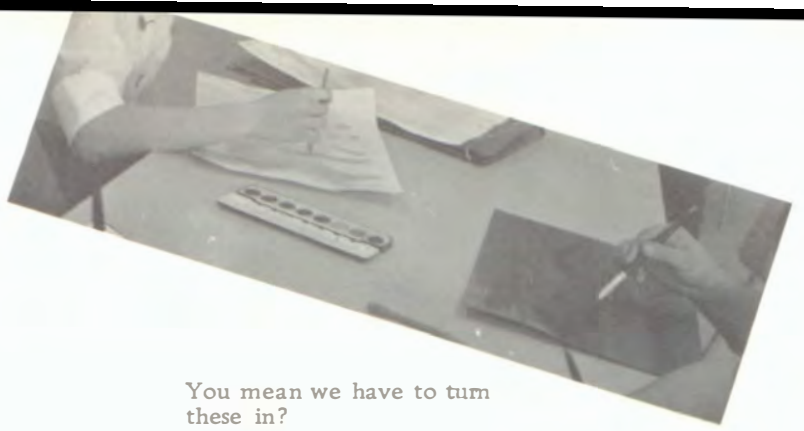
Muscles



Jump



1, 995... 1, 996... 1, 997...



You mean we have to turn these in?



Chalk up one for Roger.



Look Ma, I'm an artist's model!



Make it look round!

Anything you can do I can do better.





# ART DEPARTMENT

A vote of thanks goes to this year's art department. Many of Ruskin's organizations appreciate its able assistance. The excellent instructors, Mrs. Velma Read and Mr. Les Wight, are always willing to assist when a poster or a piece of scenery must be made or advice on a project must be secured.



The day we experimented.



Practice makes perfect.



This more fun than  
number paints!



Love that art history.



Hands of a master?



How does this look?



Paying attention to the girls



# HOME



MISS MARGUERITE STALLEY  
Home economics



Isn't this boys' phys. -ed. ?



This is how we do dishes



Punch, anyone?



Slip showing?



MRS. HELEN MAPLES  
Home economics, related arts

**RIEDER'S FOOD CENTER**  
KANSAS CITY, MISSOURI

8744 BLUE RIDGE  
SOUTH 1-04001

# ECONOMICS



# DAY BY



Are you part of your drawing board?



Well, I'll be!



One plus one equals two.



Takes two to iron.

# DAY



Who glued the cap on?



Let's draw!



One-two-three kick!



Who took out the chairs?



Quiet! Geniuses at work.



Have you seen the new boy?



And what's in front?



Intelligent?



# ROUTINE



Well, it's this way!



Washington, who's that?



This is no track meet!



Trig topics.

# COUNSELING AT RUSKIN

John Murry



Edd Johnson



Marjorie Langford

The counselors' helpers



Ruskin is proud of the high quality of counseling offered to its students by our counselors, Mrs. Marjorie Langford, Mr. Edd Johnson, and Mr. John Murry.

Giving help to students new to high school, advice to students departing for college or about to take jobs, and help with personal problems are among their duties. Giving aptitude, progress, and intelligence tests are all part of their work and aid them in helping students select a vocation.

Another example of their activities is the annual College Night, held this year at Ruskin on November 22, when representatives from many colleges and universities in this area visited with students to answer their questions about college.

# RUSKIN'S LIBRARY



ROW ONE: B. Gaiser, librarian, K. Elving, A. King, N. Lee, C. McCune, J. Bayless, K. Campbell, M. Cantwell, library clerk. ROW TWO: M. Jensen, L. Rose, D. Conklin, P. Bartos, D. Sudduth, L. Roberts, S. Hunt.



Really we work!



This is due...



Information please



S-T-R-E-T-C-H



# APPRECIATED

J  
U  
N  
I  
O  
R  
S  
T  
A  
N  
D



ROW TWO: Warren, Wesner, Stoffer, Schuch, Goodman. ROW ONE: Franklin, Smith, Abney, Parks, Byington.

G  
Y  
M  
O  
F  
F  
I  
C  
E



ROW THREE: Gliem, Perdue, Michael, Bixler, Baker, Brisco, Dickinson. ROW TWO: Prater, Atkinson, Ballard, Gerred, Peak. ROW ONE: Rountree, Brockmeier, Willis.

G  
Y  
M



O  
F  
F  
I  
C  
E

ROW THREE: Flanagan, Hummel, Chalmers, Laws, Flora, Coffman, Godsey. ROW TWO: Flora, Howard, Laws, Draper, Mocobey, Arnett. ROW ONE: Casady, Eager, Neilson, Sanders, Kettler, Briggs, Tanner.

N  
U  
R  
S  
E  
'  
S



O  
F  
F  
I  
C  
E

ROW TWO: Crawford, Frounfelter, Butterworth, Brown. ROW ONE: Fromhold, Hurst, Larabee, Cordsen.

M  
A  
I  
N  
O  
F  
F  
I  
C  
E



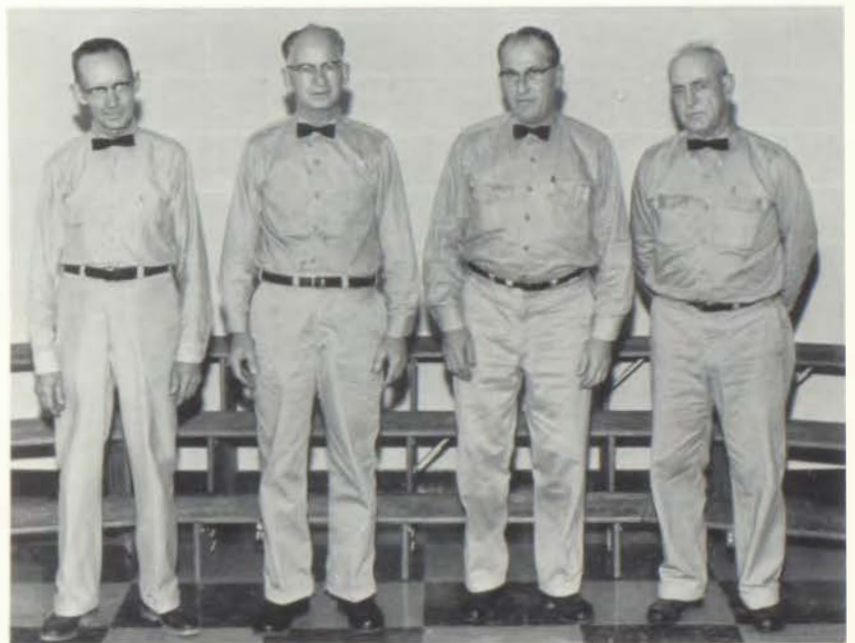
ROW THREE: McDonald, Stoll, Breshers, Burtchett, Smith, Beatie, Chestnut. ROW TWO: Bartley, Williams, Walker, Klesath, Yamashiro. SEATED: Gowler, Phillips.

# HELPERS



Thank you for your ad in our yearbook and also for the nourishing meals you have provided.

ROW TWO: Mildred Theobald, Jennie Addams, Veda Sykes, Mita McRoberts, Mary Keller, Betty Hickerson. ROW ONE: Jane Engels, Verna Plummer, Mamie Mosby, Mary Cederburg, Dottie Omer.



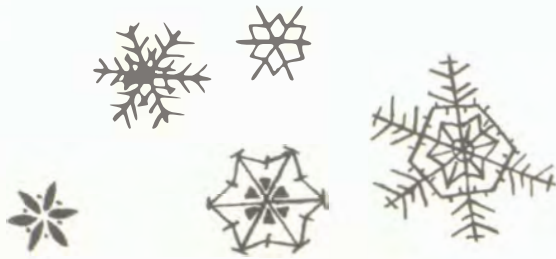
Mr. Moranski, Mr. Trip, Mr. Miller, Mr. Fenwick  
Thank you for a spotlessly clean school





# SNOW

# BALL







1  
9  
6  
0





Ronnie Welch  
... You don't know me sir, but!"



Mary Cowdrick talking about  
Mirage and Hi-Light.

## T V TEEN HOP



Anyone wish to dance?



Dance contest winners.



**A  
T  
H  
L  
E  
T  
I  
C  
S**





JIM CORDER  
Junior tackle



MIKE CASADY\*  
Senior tackle



JERRY FARMER\*  
Senior back



CHUCK PIERCE  
Junior back



BOB STEELE  
Sophomore back



RON ARNETT\*  
Senior back



JOHN LAWS  
Junior back



DAN HAUPT  
Junior end



LARRY CHALMERS\*  
Senior tackle  
Co-captain



BILL LAWS  
Senior end



TED WELBORN  
Junior guard



CORKY WORTH  
Sophomore back

\* Denotes conference

# RUSKIN

## RUSKIN PAYS TRIBUTE



DON FLORA  
Senior center



DAVE HUMMELL  
Sophomore guard



RON RUSSELL  
Senior tackle



RON HEMBY  
Junior tackle

# EAGLES



ED WIBERG  
Senior end  
Co-captain



VERNON TANNER  
Junior back



JOHN NEAL  
Senior back



JIM NIELSEN  
Junior back



RON WELCH  
Junior end

# TO THESE LETTERMEN

honorable mention



TOM COLE  
Junior end



PAT FLANAGAN\*  
Senior back



BILL EAGER  
Senior back



S-S-S-S BOOM!

### Football Schedule 1960

Richmond	0	13	Ruskin
*Grandview	30	7	Ruskin
*Lee's Summit	14	0	Ruskin
*Blue Springs	0	19	Ruskin
*Center	26	0	Ruskin
*Liberty	46	0	Ruskin
*Ft. Osage	7	14	Ruskin
*Park Hill	6	13	Ruskin
Wm. Chrisman	29	12	Ruskin

\*Denotes conference games



Get that ball and--GO!





And away we go!!



Whoops!



Will he or won't he?

## BASKETBALL SCHEDULE

<u>School</u>	<u>we</u>	<u>they</u>
Richmond	59	31
Grandview*	38	39
Lee's Summit*	55	37
Blue Springs*	46	51
Fort Osage*	56	48
Center*	49	51
Liberty*	42	39
Fort Osage*	36	39
Wm. Chrisman	40	59

\*--denotes conference  
 Schedule complete to January 19, 1961

Center\*  
 Liberty\*  
 Parkhill\*



**BILL LAWS**  
Senior forward



**ED WIBERG**  
Senior forward



**GARY GODSEY**  
Senior guard



**TOM MOCKOBEY**  
Senior guard



**LARRY CHALMERS**  
Senior forward



**JOHN LAWS**  
Junior guard



**RUSSELL DOWELL**  
Head coach

# EAGLES

# 1961

The students of Ruskin are proud of and appreciate the time and spirit that their varsity team contributes to the morale of the student body.

It is a tradition at Ruskin to have an excellent team from the standpoints of effort and sportsmanship.

The students, therefore, want to acknowledge their team.



TOM COLE  
Junior guard



RON DRAPER  
Senior forward



VIC  
HIGGANBOTHAN  
Senior forward



JOHN COLE  
Senior forward



CHUCK PIERCE  
Junior guard



JERRY MITCHELL  
Junior guard



HERB HAMANN  
Assistant coach



# B TEAM



ROW ONE: B. Steele, L. Lawson, J. Sledge, R. Hansen, S. Timmons, C. Worth. ROW TWO: D. Holderman, L. Nespica, L. Zion, W. Perry, G. Kline, R. Wetmore, D. Goings, Coach Herb Hamann.

# FRESHMAN TEAM



ROW ONE: R. Beeson, L. McDaniels, L. Goble, M. Morris, S. Husby. ROW TWO: J. Neilson, B. Nitterman, R. Tull, R. Nutt, F. Monteleone, P. Beyer, Coach Gladden Dye.

# TRACK



ROW ONE: R. Arnett, E. Wiberg, B. Laws, C. Yarbough, J. Ervin. ROW TWO: R. Elliott, J. Laws, J. Corder, T. Welborn, T. Sanders, T. Mathes. ROW THREE: J. Bodenhamer, coach; B. Herbert, C. Pierce, V. Tanner, P. Pinkepank.

## VARSITY



ROW ONE: M. McDaniels, M. Runions, D. Dunn, C. Worth, H. Emanuel. ROW TWO: B. Steele, S. Lawhon, R. Worth, L. Nespica, B. Kelley, W. Stevens.



ED WIBERG  
State  
Second Place Winner  
High Hurdles

## B TEAM

### SENIOR LETTERMEN



R. Arnett  
E. Wiberg  
B. Laws  
J. Ervin  
R. Elliott





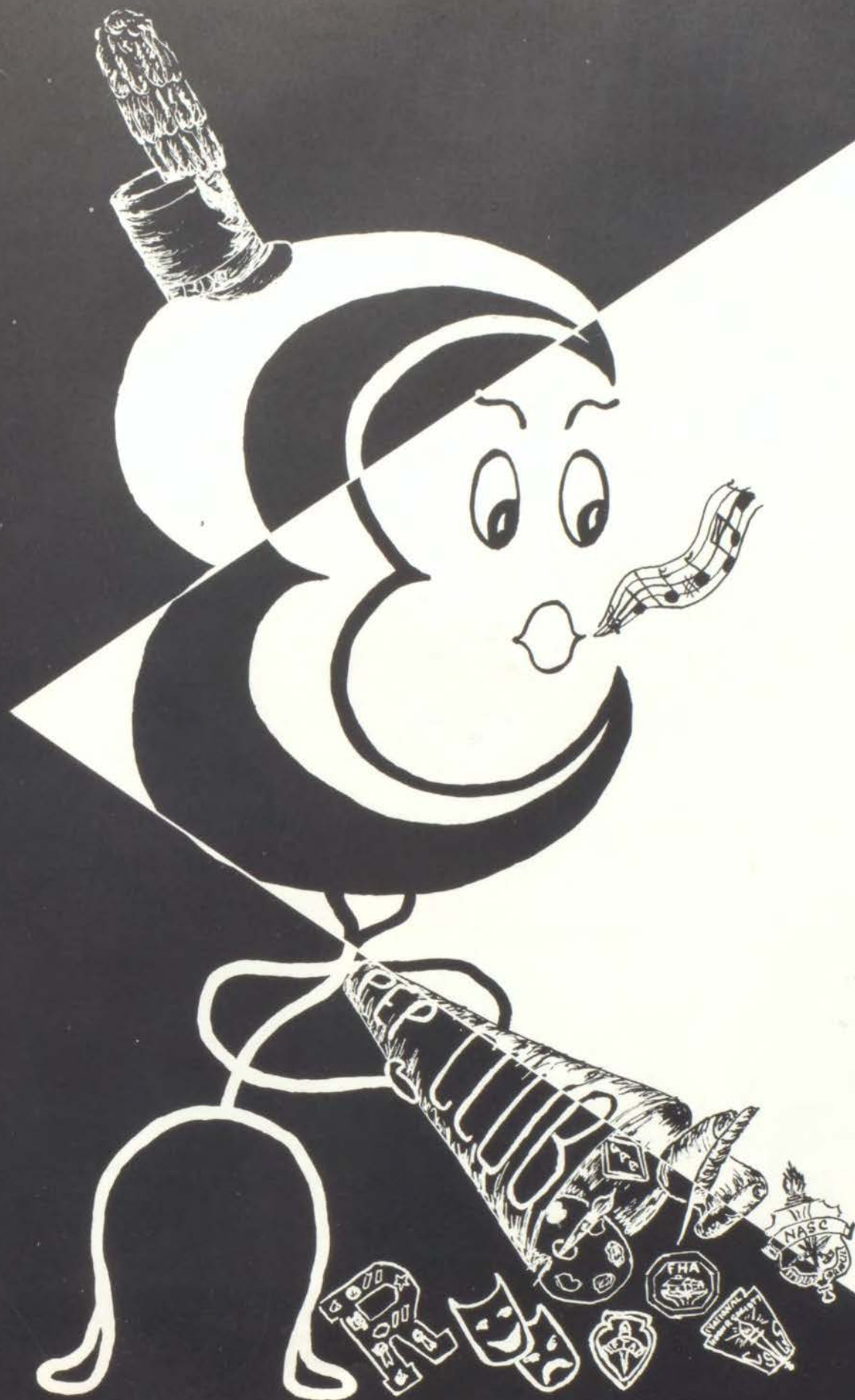
E. Worth, T. Taylor, D. Mullies, G. Badger, C. Zook, E. Contras, Coach Terry Terril.

# GOLF TENNIS



STANDING: Coach Terril, C. Cowdrick, D. Brown, T. Moore, R. Hammer, G. Selle. KNEELING: B. Pickett, C. Franklin, M. Lundeen.





**O  
R  
G  
A  
N  
I  
Z  
A  
T  
I  
O  
N  
S**

# STUDENT COUNCIL



SEATED: H. Nagel, treasurer; L. Chalmers, president, B. Laws, vice-president; S. Garner, secretary. STANDING, ROW ONE: S. Lawhon, C. Fromhold, P. Moffitt, B. Hart, C. Oldham, B. Kelly. ROW TWO: W. Matthews, sponsor, V. Tanner, M. Singer, R. Amett, G. Godsey, L. Fisher, L. Lawson, M. Langford, sponsor. NOT PICTURED: J. Nielsen.

## SPONSORS



M. Langford



W. Matthews



D. Lawrence

The Student Council, with Larry Chalmers, president, has accomplished many things for the betterment of this high school and its student body.

The first Ruskin Student Council was organized in 1943. Since that time many persons have had an opportunity to participate in training and guidance along the channels of government.

The student body of Ruskin has co-operated well to help its council achieve desired goals.

SPONSORED BY THE STUDENT COUNCIL





President Larry Chalmers assumes office.



Members march in for installation.



Concluding ceremonies.



# Quill



L. Moore  
SPONSOR



and

## QUILL AND SCROLL NOMINEES

ROW ONE: D. Conklin, R. Draper, P. Simpson, G. Gerred, B. Parks, M. Cowdrick. ROW TWO: K. Elving, C. Pierce, N. Smith, J. McCready, T. Kopf, M. Damsgard, S. Petty. ROW THREE: S. Bates, G. Bell, R. Flora. NOT PICTURED: G. Breshears.



A. Wrisinger  
SPONSOR

# Scroll

International Honorary Society for High School Journalists





SPONSOR  
Mrs. M. Smith

Membership in the National Honor Society signifies one of the highest honors which can be attained in Ruskin High School. Based on the principles of leadership, character, service, and scholarship, this organization is designed to "carry the light of knowledge into the world of darkness and ignorance."



SPONSOR  
Mrs. E. May

Thirty-two students have been inducted into the National Honor Society this year. Fifteen per cent of the senior class, ten per cent of the junior class, and five per cent of the sophomore class may be allowed in this honored organization.



ROW ONE: M. Smith, sponsor; Pennington, Bayless, Campbell, Conklin, Granger, historian; Draper, vice-president; R. Armstrong, president; Gerred, secretary-treasurer; Yamashiro, Burtchett, Sloan, Thomas, Kelly, F. May, sponsor. ROW TWO: McDonald, Dunn, Brockmeier, Elliot, Sadler, Higginbotham, Smith, Fayard, Bartley, Parks, M. Cowdrick, Beatie, Godsey, Bunch, Arnett. ROW THREE: Perry, Timmons, Braswell, Ballard, Schultz, C. Cowdrick, Schuch, Wesner, Laws, Pinkepank, Perdue, Stoll, Wiberg. ROW FOUR: Williams, Lines, Banta, Nash, Demetreus, Fromhold, Licata, T. Smith, Bartos, R. Armstrong, Vogler, Horn, Elving. ROW FIVE: Chalmers, Whitsitt, Speicher, Stillwell, Hombs, Moffitt, Warren, Isaacson, Miller, Hudson, Wooldridge, Hurst, Lawson.



# NATIONAL HONOR SOCIETY





ROW ONE: L. Loveland, M. Neal, L. Lightfoot, B. Anschultz, S. Sikirica, J. Hammer, R. Calegari, K. Campbell, C. Adkinson, M. Campbell. ROW TWO: D. Wright, J. Monteleone, S. Majors, D. Peek, P. Wolf, G. Elliott, B. Scott, C. Fromhold, L. Prater, C. Iverson, B. Menaugh. ROW THREE: J. Hurst, E. Cordsen, J. Lanford, C. Hardman, D. Elliott, M. Skaggs, S. Barnes, M. Carter, S. Radford, V. Sharpe, S. Weddle. ROW FOUR: K. Dillinger, S. Jones, C. Wooldridge, D. Berglund, S. Wolfe, N. Brown, S. Duns-  
worth, J. Banta, M. Ireland, P. Cox, S. Porter.



STANDING: P. O'Bryan, sophomore checker; C. Butterworth, senior checker; G. Goforth, head cheerleader. SEATED: M. Beatie, secretary; B. Walker, president; M. Burtchett, vice-president; K. Demetres, treasurer. NOT PICTURED: D. Isaacson, junior checker.

PEP CLUB OFFICERS



# WIN, EAGLES!



ROW ONE: C. Butterworth, M. Burtchett, K. Demetreus, M. Beatie, S. Hart, B. Walker, P. O'Bryan, D. Isaacson, P. Ireland, C. Nash, C. Hillje. ROW TWO: T. Hicks, S. Christopherson, G. Wilson, P. Kitch, S. Garner, N. Taylor, J. York, J. Francis, J. Beyer. ROW THREE: J. Zumwalt, J. Smith, T. Scott, N. Lee, L. Wheat, B. Baldwin, J. Bayless, R. LaVelle, J. Irion, L. Sharp, H. Twyman. ROW FOUR: M. Frounfelter, S. Biven, B. Dayoub, N. Bixler, L. Robertson, C. Bunch, R. Wilson, J. Stewart, M. Bates, J. Thomas, S. Kirke, B. Higgins, P. Sadler.



The Ruskin Pep Club is decorating for the chili supper given to the Lee's Summit Pep Club on the 16th of December.



'60-'61



Do it, Eagles!



Practice makes perfect.



G. Goforth, B. Hombs, S. Sloan, W. Weddington, S. Granger, G. Michner.

C  
H  
E  
E  
R  
L  
E  
A  
D  
E  
R  
S



# R CLUB



SEATED: B. Eager, secretary; E. Wiberg, president; R. Arnett, vice-president; P. Flanagan, treasurer. ROW ONE: Russell Dowell, sponsor; B. Steele, J. Farmer, V. Tanner, J. Irwin, R. Elliott, J. Neal, D. Hummell, Herb Hamann, sponsor. ROW TWO: L. Howard, J. Laws, R. Welch, D. Haupt, C. Worth, G. Godsey, C. Pierce, R. Russell, M. Casady, R. Hemby. ROW THREE: J. Neilsen, C. Yarborough, T. Cole, J. Corder, B. Laws, L. Chalmers, R. Flora, T. Welbom, C. Harris.



The R Club is an organization open only to those boys who have been recognized for their outstanding achievement in athletics by being awarded a letter. Its purposes are to encourage participation in athletics and to build good sportsmanship throughout the school.

The R Club is Ruskin's oldest organization, being established in 1902.

The R Club Dance, sponsored annually by the organization was held on January 27 this year.



# RUSKIN GIRLS'



SPONSOR  
Mary Finn



Everyone has fun at the annual Christmas party.

Coach Finn  
works out



## OFFICERS

- President . . . . . P. Simpson  
 Vice-President . . . . . S. Garner  
 Secretary . . . . . M. Neal  
 Rec. Secretary . . . . . S. Perdue  
 Treasurer . . . . . H. Langston



OFFICERS SEATED: S. Perdue, M. Neal, P. Simpson, S. Garner, H. Langston. EXECUTIVE BOARD, SEATED: M. Frounfelter. STANDING: S. Chesnut, B. Goforth, J. Hurst, M. Damsgard. SEATED RIGHT: C. Butterworth. ROW ONE, LEFT TO RIGHT: S. Gile, M. Beatie, M. Burchett, S. Stillwagon, M. Vallier, P. Ireland, B. Walker, B. Hudson, C. MacMillan, N. Hammond, V. Moon, S. Weddle. ROW TWO: J. Krueger, S. Petty, E. Jacoby, G. Gerred, S. Lamar, D. Russell, R. Wilson, J. DesCombs, G. Michener, C. Brenner, S. Freed. ROW THREE: K. Stephenson, P. Fordyce, G. Oberndorfer, L. Rose, N. Bixler, L. Frounfelter, C. Bunch, S. Sloan, G. Goforth, W. Weddington, S. Granger.

# ATHLETIC ASSOCIATION



ROW ONE: K. Aubuchon, S. Kearney, M. Cook, M. Carter, L. Glien, S. Majors, S. Sikirica, L. Stillwell, G. Elliott, H. Langston, M. Holder. ROW TWO: C. Nash, S. Hart, D. Isaacson, M. Speicher, P. Moffitt, L. Wheat, B. Hombs, S. Porter, A. Warren, T. Scott, J. Butler, S. Chesnut. ROW THREE: P. Enright, D. Berglund, S. Garner, L. Whittsitt, M. Frounfelter, J. Shelton, P. Saddler, S. Kirke, J. Jennings, M. Bates, C. Jewell, L. Pratt, S. Debo, R. Marlowe, P. Kitch.



ROW ONE: C. Fromhold, J. Miller, C. Hosey, J. Petrie, D. Peak, M. Skaggs, D. Johnson, C. Adkinson, E. Goble, P. Wolff, D. Combs, B. Brown, D. Elliott, P. Woolsey, N. Kelly, L. Markus, B. Scott. ROW TWO: V. Sharp, C. Hickman, B. Goforth, P. Cox, J. Langford, M. Neal, K. Blackford, J. Moberly, K. Kemper, E. Cordsen, L. Loveland, P. O'Bryan, J. Franklin, M. Ireland, J. Hammer, R. Mayhand, S. Stuerke, J. Knapp, D. Wright. ROW THREE: K. Dillinger, M. Vogler, H. Twyman, J. Banta, J. Francis, B. Boltz, S. Michael, A. Morris, L. Palmer, P. Bartling, B. Snider, C. Baker, B. Dayoub, C. Saddler, S. Koppitz, P. Cooper, C. Wooldridge, N. Armstrong, P. Rose, L. Lightfoot.



# FUTURE HOMEMAKERS



ROW ONE: Fromhold, Faulkner, Prewitt, Breshears, Bondi, Kopf, Iverson, Hickerson. ROW TWO: Jacoby, Petty, White, Sturgill, Shamow, Hudson, Robinson, Smith, Sharp, Stewart, Bowling. ROW THREE: Cook, Ireland, Pierce, DesCombes, Bunch, Crawford, Warren, Wilson, Peterson. ROW FOUR: Burchett, Jones, Crawford, Smith, Breshears, Bixler, Michener, Freed, LaVille, Brisco, Mall, Miss Stillely.

## OFFICERS



ROW ONE: Smith, Breshears, Kopf, Mrs. Maples. ROW TWO: Wilson, Pierce, Crawford, Cook, Crawford, Bunch.

SPONSORED BY THE F.H.A.



# OF AMERICA



Our best aprons.



Come and get it.



We eat too!

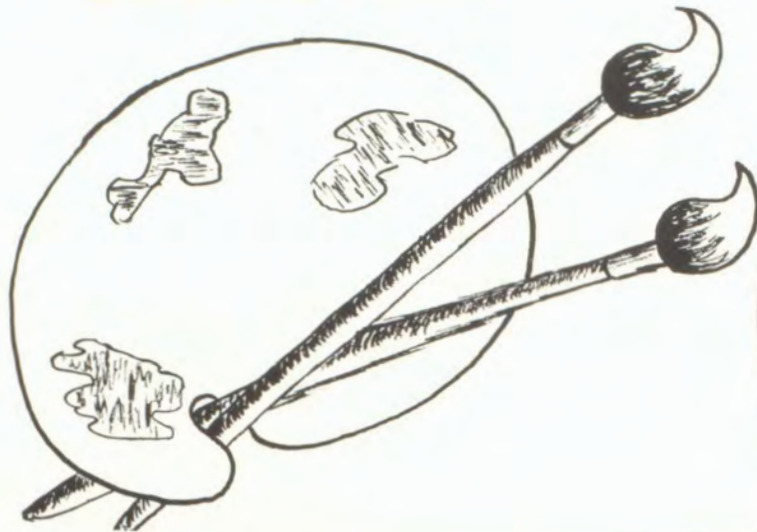


Initiation ceremony.



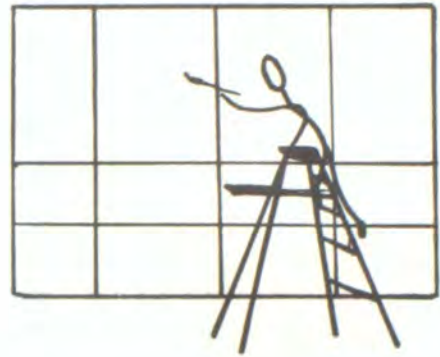
Sadie Hawkins Dance.

# ESTHETICS

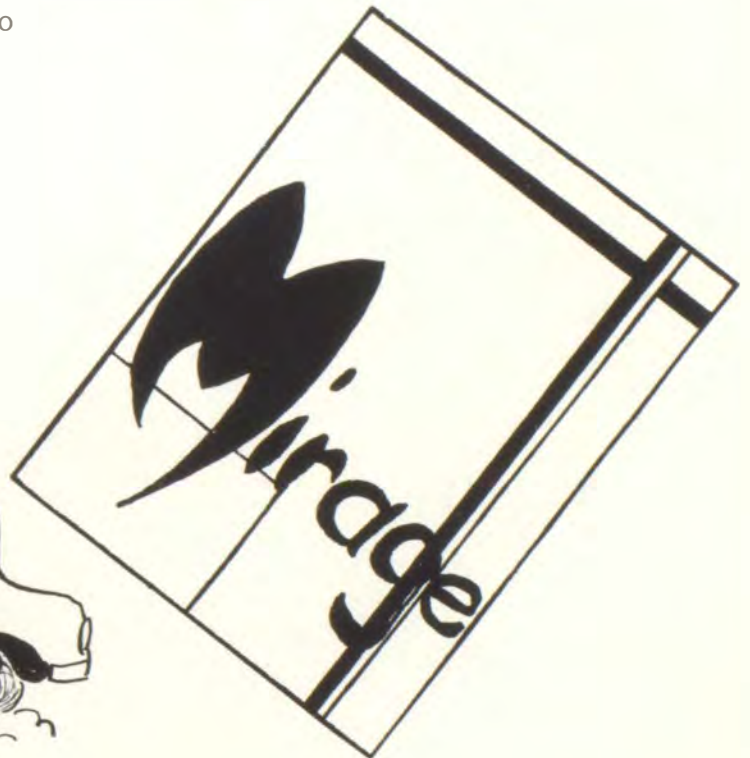
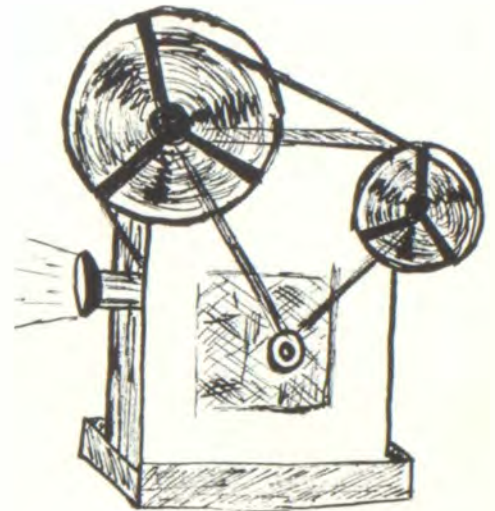


SEATED: M. Speicher, vice-president, L. Stillwell, treasurer; S. Costilow, president; P. Moffitt, secretary. ROW ONE: B. Scott, S. Gile, S. Tribble, K. Morentina, S. Wilkinson, D. Isaacson, J. Shilt, L. Paul, J. Cooper, T. Kopf, C. Iverson. ROW TWO: M. Vogler, A. Trabue, R. Briscoe, S. Mumper, B. Haupt, S. Garrett, C. Sadler, B. Higgins, M. Jensen, S. Garner, D. Costilow. ROW THREE: V. Read, sponsor; J. Francis, R. Cooper, A. Cacioppo, C. Zook, J. Kettler, R. Bray, D. Bowling, S. Grissom, S. Koppitz, L. Wight, sponsor. NOT PICTURED: R. Armstrong, D. Demetreus, E. Flatters, G. Hammond, M. Hardman, J. King, J. Marfield, J. Nash, Bill Oehler, J. Pierson, G. Smith, P. Stoup, N. Taylor, L. Sparks.





This club is new to Ruskin in name only. The word "esthetics," which means the study of anything beautiful, is the newly adopted name of last years Art Club. Their activities are varied and through them it is the desire of this organization to enrich the Ruskin student life.







ROW ONE: M. Ireland, K. Albright, R. Arnett, J. Sevier, M. Rowe, D. Urion, J. Mitchell, P. Flanagan. ROW TWO: R. Calegari, I. Robinson, S. Stillwagon, L. Sharp, S. Lamar, P. Enright, E. Worth, J. Farmer, G. Hooten, D. Davis. ROW THREE: J. Bayless, C. Scroggins, S. Grissom, B. Pahler, J. Krueger, J. Butler, P. Pennington, L. Zuroweste, S. Perdue. ROW FOUR: S. Gile, M. Cowdrick, B. Hudson, J. Ballard, C. Brenner, P. Simpson, J. Cagle, J. Belcher, D. Conklin, M. Schultz.

## CONCERT

The Vocal Music Department is composed of about 375 members in four freshman-sophomore choruses, boys' and girls' glee clubs, two madrigal groups, various ensembles, and the Concert Choir.

The freshman-sophomore choruses meet on alternate days and they, with the Boys' Glee Club, which meets on Wednesday afternoons, participated in the Christmas assembly. The Girls' Glee Club meets on Monday afternoons and sang in the annual Christmas Vespers.

The two madrigal groups and the various ensembles went to district contest and from there, those that qualified, went on to state contest.

The choruses, glee clubs, and ensembles were excellent representatives of Ruskin in their appearances during the year. They sang with true musicianship which was a credit to their director.

# MUSIC



ROW ONE: F. Koonce, G. Godsey, T. Taylor, L. Engle, J. Marfield, L. Davis, G. Bell, W. McCune.  
ROW TWO: T. Welborn, D. Haupt, J. Perry, L. Frounfelter, C. Butterworth, G. Michener, L. Whitsitt,  
S. Chesnut, G. Gerred, V. Moon. ROW THREE: M. Frounfelter, B. Dickinson, M. Bates, V. Clemons,  
P. Ford, G. Goforth, S. Garner, N. Hammond, B. Walker, T. Kopf. ROW FOUR: B. Haupt, M. Burt-  
chett, R. Marlowe, M. Beatie, B. Figgins, S. Swisher, V. Bridgewater, C. Pierce, C. Waller, C. Gerken.

## CHOIR

The Concert Choir is a select group this year in that all prospective members were auditioned before being accepted. Among the appearances which the choir made during the year were district contest, a spring concert, Christmas Vespers, Baccalaureate and Commencement, and a guest appearance with the Blue Springs High School Band.

The choir is composed of junior and senior girls in addition to sophomore, junior, and senior boys and has seventy-seven members. In an election held last spring, Ron Arnett and Kirk Albright were elected as president and vice-president, respectively. The other officers are Brenda Haupt, secretary, Betty Dickinson, treasurer, and Jackie Bayless, head librarian.

Under the direction of Mr. Fred Tarry, the choir gave many fine performances throughout the year. Their tone quality was worthy of the highest praise.

# MADRIGALS



ROW ONE: P. Pennington, M. Schultz, L. Frounfelter, J. Krueger, T. Kopf. ROW TWO: E. Worth, R. Arnett, D. Urion, J. Marfield, J. Farmer.



ROW ONE: C. Scroggins, M. Frounfelter, L. Whitsitt, J. Ballard. ROW TWO: M. Ireland, L. Davis, F. Coons, T. Taylor, J. Perry.

SPONSORED BY THE VOCAL MUSIC DEPARTMENT



# GIRLS' GLEE CLUB



ROW ONE: J. Krueger, N. Hammond, C. Brenner, C. Oldham, P. Ford, M. Burtchett, M. Beatie, B. Figgins, B. Hudson, J. Ballard, L. Sharp, P. Pennington, S. Gile. ROW TWO: S. Kearney, J. Bayless, C. Waller, S. Grissom, S. Chestnut, C. Bunch, J. Butler, S. Perdue, S. Garner, P. Cox, B. Walker, C. Scroggins, L. Lightfoot, J. Endicott, T. Kopf. ROW THREE: R. Marlow, B. Boltz, J. Irion, M. Frounfelter, C. Crawford, L. Frounfelter, C. Butterworth, M. Schultz, M. Bates, R. Wilson, J. Francis, C. Wooldridge, J. Banta.

# BOYS' GLEE CLUB



ROW ONE: E. Worth, B. Brenton, D. Hudson, W. McCune, G. Bell, C. Cowdrick, G. Hooten, D. Davis, M. Ireland, B. Pickett, J. Farmer, R. Cooper, J. Hildebrandt, S. Husby. ROW TWO: B. Wallace, T. Taylor, L. Davis, E. Kenney, D. Dunn, J. Marfield, L. Engle, M. Roland, D. Haupt, R. Hemby, J. Perry, M. Henry, D. Sparks. ROW THREE: J. Sevier, D. Urion, R. Arnett, F. Koonce, J. J. Mitchell, P. Flanagan, T. Moore, T. Welborn, M. Rowe, K. Albirght, G. Godsey.



# UNDERCLASS



ROW ONE: Wright, Miller, Wolf, Smith, Stanley, Elliott, Wilkinson, Caldron, Breshears, Kennedy, Kee, Harrington, May, Lillygren. ROW TWO: Messmer, Gerken, Mais, Ross, Mann, Murray, Moore, Rose, Norman, Collier, Blackman, Truesdal, Dowell, Oehring, Nash, Smith. ROW THREE: Kernodle, Kemper, Lanford, O'Bryan, Bayless, Bowman, Hammond, Gibbons, Cooper, Hesam, Sturgill, Bartling, Stewart, Boehner, Dolstein, Banta, Pryor, Compton, Kelly, Wright, Ledbetter. ROW FOUR: Guerrero, Wilson, Kelly, Gash, Kosticka, Blagg, Thompson, Oldham, Petrie, Roberts, Miller, Hammontree, Buchanan, Hedrick, Becklean, Schroer, Wallace, Cooper, Smith.



ROW ONE: Kelly, Klassey, Brewer, Lockwood, Powers, Stevens, Hardman, Hemme, Cerrone, Hart, Sucker, Lawing, White, Petty. ROW TWO: Hosey, Petrie, Goble, Warren, Sikiricka, Peterson, Smith, Morris, Wolfe, Hedrick, VanLiew, Fink, Hudnall, Bailey, Spear, Howard. ROW THREE: Ledbetter, Saylor, Swyman, Jones, Crawford, Irion, Parks, Rookstool, Snider, Giberson, Bowman, Paterson, Taylor, Clapp, Ledbetter, Troxel. ROW FOUR: Kays, Hinton, Walker, Kacheal, Ireland, Silligren, Cross, Sparks, Frock, Searing, Allen, Rowland, Mockobey, Bybee, Sellars, Beeson, Galler, Wester, Grissom, Brenton, Searing.



# CHORUSES



ROW ONE: Stuerke, Franklin, Armstrong, Ralston, Zuroweste, Faulkner, Robinson, Stephens, Dillinger, Welch, Prater, Barnes, Kildow, Thompson, Miller, Neff, Vaught. ROW TWO: Stubbs, Xanders, Malaney, Lowther, Brown, Ferina, Stewart, Woolsey, Miller, Jeffries, Leap, Trabue, Railey, Licata, Gerred, King. ROW THREE: Bennison, Bowling, Pierson, Scott, Cox, Ireland, Francis, Lightfoot, Neal, Palmer, Wiberg, Peterson, Sturgill, O'Hara, Aubuchon. ROW FOUR: Ward, Taylor, Cowdrick, Dunsworth, Major, Nespica, Perry, Calvin, Northington, Steele, Embry, Husby.



ROW ONE: Moberly, Cooper, Shanks, Hamilton, Wallace, Stewart, Thompson, Couch, Raupp, Hill, Elving, Flatters, Franklin, Curliss, Maupin. ROW TWO: Loveland, Wilhite, Monteleone, Johnson, White, Mayhugh, Anderson, Menaugh, Hart, Miller, Palmer, Durtchi, Simms, Metheny, Tribble, Filo, Markus. ROW THREE: Blackford, Creason, Shepard, Wooldridge, Boltz, Vaughn, Wendlandt, Edwards, Vernon, Haning, Lorenz, Oldham, Irvin, Hildebrandt, Hudson, Morgan, O'Neil, McGuire, Austin, Dunn, Dyer, Moore, Close, Davis, Reece, Sledge, Mitchell, Faulkner.



# GOLDEN EAGLE



## MAJORETTES

G. Gerred, E. Goble, P. Moffitt, S. Grissom



SPONSORED BY INSTRUMENTAL MUSIC DEPARTMENT

# MARCHING BAND

This has been a very busy year for the 81 members of the Ruskin Golden Eagle Marching Band. They marched in the American Royal Parade and were selected for the second consecutive year to perform as the official band for Missouri at the Royal. The group also went to Lawrence, Kansas for the University of Kansas Band Day, which was on nation-wide television. In addition to these trips the musicians faithfully provided pre-game and half-time entertainment at all home football games. Led by Jim Billman, drum major, they are under the capable direction of Mr. and Mrs. Kenneth Seward, who have given much of their time and effort in order that Ruskin might have a band they can be proud of.



BAND DIRECTORS  
Nancy Seward, Kenneth Seward.

## BAND OFFICERS

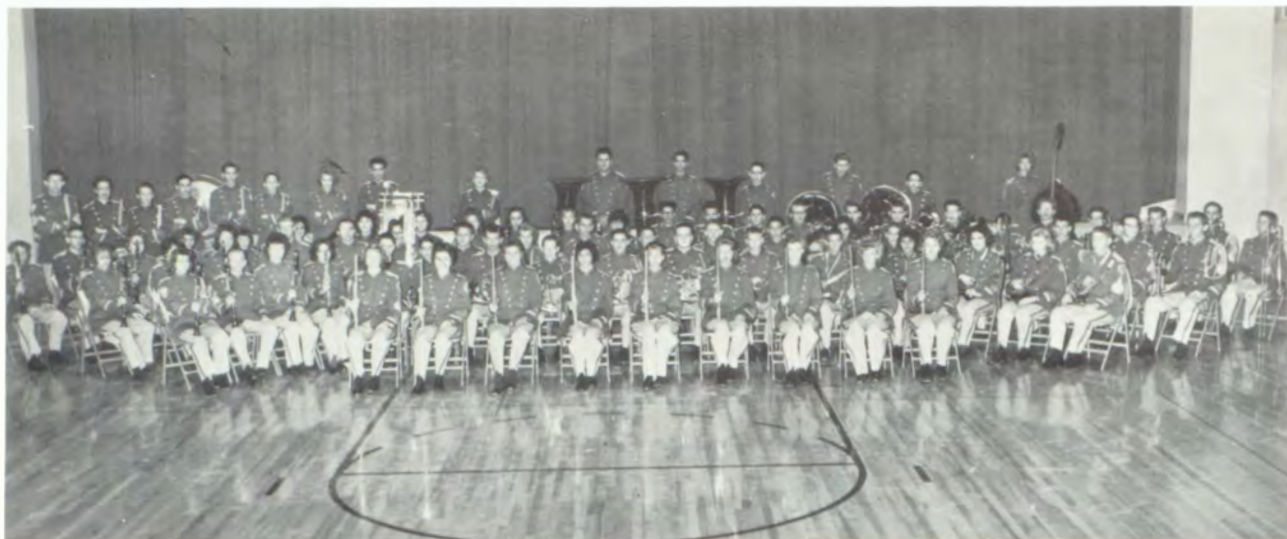
STANDING: W. Lillygren, S. Grissom, G. Gerred, S. Kearney, J. Billman. SEATED: W. Steen, T. Mockobey, H. Nagel.



SPONSORED BY INSTRUMENTAL MUSIC DEPARTMENT



# GOLDEN EAGLE



"We're the faithful school musicians."

The eighty-six member Golden Eagle Concert Band participated in many musical events during the past year. Some of these were their performance in the Winter Concert, Christmas Vesper Service, the third annual Pageant of Bands concert, conference music concert in Grandview, district music contest in Warrensburg, and the formal spring concert. Two of the more prominent achievements of the band this year were the acceptance by the band of a service trophy from the Kansas City Citizens' Committee for being the outstanding high school band in the Kansas City area and the recording of the school song, contest music, and other instrumental selections.

## Men of Note



ROW ONE: D. Wilson, L. Howard, J. McIntyre, S. Sproul, J. Steen, R. Hedrick, B. Miller. ROW TWO: J. Harmon, R. Worth, W. Steen, T. Mockobey, B. Hansen, H. Nagel, L. Moore, R. Barnes, D. Flora, R. Nagel.

There are seventeen members in this newly organized stage band. They have performed this year with the Golden Eagle Band at the winter and spring band concerts. These musicians played for the district student council meeting held at Ruskin. They also provided music for the freshman class spring formal dance.

SPONSORED BY INSTRUMENTAL MUSIC DEPARTMENT



# CONCERT BAND

BAND



ENSEMBLES



**BRASS SEXTET**  
Nagel, Hansen, Goings, Steen,  
Billman, Flora.



**TROMBONE TRIO**  
Steen  
Mockobey  
Harmon



**BRASS QUINTET**  
Hammer, Lutes, Mockobey  
Barnes, Kinsey.



**FRENCH HORN QUARTET**  
Goings  
Compton  
Jackman  
Dakon



**TRUMPET QUARTET**  
Kinsey, Barnes, Durtschi,  
Arnsmeyer.



**BRASS QUARTET**  
Arnsmeyer, Compton, Nagel  
Holt.



**CLARINET CHOIR**

ROW ONE: Grissom, Howard, Van Gordon, Cerrone, Wolff, Wilson. ROW TWO: May, Sturgill, Gerred, Mahoney.

**WOODWIND  
and  
PERCUSSION  
ENSEMBLES**



**MIXED CLARINET QUARTET**  
Grissom, Howard, Wilson,  
Gerred



**FLUTE TRIO**  
Boltz  
Goble  
Dowell



**WOODWIND TRIO**  
Grissom, Kearney, Boltz



**SAXOPHONE QUARTET**  
Sproul, Palmer, Troxel, Steen



**DRUM ENSEMBLE**  
Gerken, McCune, Woody, Hesam, Calvin



**DRUM ENSEMBLE**  
Woody, Gerken, Miller





# FBLA

SEATED: K. Stephenson, treasurer; L. Wheat vice-president; F. McDonald, president; M. Kle-sath, secretary; C. Brockmeier, historian.



SEATED: J. Elliott, J. Dunn, J. Beyer, M. Cook, J. York. ROW ONE: S. Pryor, E. Cordsen, C. Tucker, D. Wright, C. Fromhold, S. Rountree, J. Thomas, B. Hart, B. Baldwin, D. Hall, C. Williams.



ROW ONE: M. Campbell, K. Campbell, president; J. Bayless, secretary; P. Kelley, S. Weddle, L. Paul, N. Shireman, S. Cassidy. ROW TWO: L. Falkerson, S. Freed, A. Trabue, N. Smith, J. Thomas, B. Mapson, B. Combs, vice-president. ROW THREE: M. Dowell, sponsor; M. Horn, L. Woody, treasurer; R. Hammer, R. Draper, M. Henry, B. Dayoub.

# EL CIRCULO ESPANOL



# JUNIOR CLASSICAL LEAGUE



ROW ONE: Willhite, Cotter, Berglund, Sadler, Sparks, Smith, Miller, Cockrum, Herring, Bartos, Wiberg, Bron, Compton, Bolling, Johnston. ROW TWO: Debo, Vazano, Bell, Sexton, Miller, Lutes, Roland, Jennings, Creason, Leap, Hudson, Wachner, Cowdrick. ROW THREE: Fox, Brenton, Hildebrant, Hammond, Norman, Brockmeir, Aubuchon, Jackson, Nash, Aubuchon, Loring, Oliver, Rudy, Elving, L'Hommedieu.



ROW ONE: Selle, Reed, Armstrong, Hemby, Hart, Dunn, Dyer, Northington, Cacioppo, Holt, Maxwell, Turecek. ROW TWO: Leavens, Faulkenberry, Bowman, Moll, Baxter, Kelly, Timmons, Stubbs, Meyers, Mumper, Sadler, Keyes. ROW THREE: Powers, Miller, Kennamen, Callicotte, Carter, Ostron, Mann, Whitte, Neff, Gibson, Maupin, Snider, Wolff. ROW FOUR: Cotter, Skyes, Petty, Jeffries, Deobler, Blackburn, Wilkinson, O'Dell, Fink, Lines, Armstrong, Struerke, Martina.



# RENDEZ— VOUS FRANCAIS



ROW ONE: C. Hosey, J. Petrie, S. Braswell, R. Woolery, J. Wright, E. Warren; C. Hillje, J. Hammer, S. Filo, D. Peek, J. Miller, G. White. ROW TWO: B. Goforth, A. Morris, R. Mahan, C. Oldham, S. Salley, M. Williams, P. Moffitt, N. Hammond, D. Isaacson, A. Warren, L. Lightfoot, S. Lamar, A. King, H. Spear. ROW THREE: A. McMillen, S. Herman, W. Kurtz, S. Jones, C. Boehner, J. Flynn, D. Conklin, F. Mansfield, M. Schultz, P. Cooper, C. Baker, S. Kirke, P. Small, C. Jewell, C. Cowdrick.

The newly formed French club was one of the active organizations this year. Their activities included trips to the Music Hall and the Nelson Art Gallery, and a talk by two foreign exchange students from Switzerland. The Mardi Gras Costume Ball, under the club's sponsorship, was a highlight of the year. The purpose of the dance was to start a fund to bring a foreign student to Ruskin.



## LIAISON OFFICERS

SEATED: D. Stewart, sponsor, J. Miller, L. McMillen.  
STANDING: S. Perdue, C. Wooldridge, L. Wesner, J. Ghean, J. Monteleone.



SEATED: J. Ballard, S. Petty, M. Horn. ROW ONE: L. Prater, S. Braswell, L. Sharp, S. Sikirica, E. Jacoby, N. Lines, J. Krueger, S. Grissom, S. Weddle, C. Nichols. ROW TWO: M. Vogler, M. Burtchett, K. Freeman, C. Cook, R. LaVelle, P. Bartos, P. Bartling, L. Pratt, V. Miller, N. Lee, S. Dunbar. ROW THREE: B. Byington, J. Grissom, C. Cowdrick, T. Smith, C. Miller, R. Jacobs, L. Wesner, P. Beyer, R. Faulkner, D. Bell, sponsor: J. Scott.



Social Hour

Thespian Court



"Thing"

# RUSKIN THESPIAN PLAYERS



# USHERS CLUB

ROW ONE:  
C. Cowdrick  
D. Bell  
J. Ballard



ROW TWO:  
T. Smith  
M. Horn  
S. Dunbar

A vote of appreciation goes to this new club for ushering at school social events.

# RHALS



ROW ONE: N. Lee, historian; S. Hunt, secretary; L. Rose, president; J. Bayless, vice-president; K. Campbell, treasurer. TOP ROW: B. Gaiser, sponsor; M. Campbell, M. Jensen, D. Conklin, P. Bartos, C. McCune, C. Bayless, S. Benneson, M. Cantwell.

Another new club at Ruskin is the Ruskin High Aides in Library Service. This club has been organized to create more interest among students in the school library and to teach them to make intelligent use of the library.

# FUTURE TEACHERS OF AMERICA



SEATED: S. Kirke, recording secretary; B. Higgins, secretary; D. Isaacson, president; R. Schuch, vice-president; T. Scott, treasurer. ROW ONE: P. Ralsten, K. Aubuchon, D. Peek, B. Scott, K. Demetreus, W. Peterson, G. Costilow, S. Koppitz, J. Nash, C. Hardman, S. Kickerson, C. Iverson. ROW TWO: M. Casper, sponsor; S. Mann, C. Nash, S. Hart, K. Stephenson, E. Bruner, L. Palmer, N. Brown, L. Adams, J. Wright, S. Freed, V. Meredith, sponsor. ROW THREE: N. Bixler, J. Thomas, C. Baker, C. Boehner, R. Flora, L. Compton, C. Cowdrick, L. Woody, D. Dunn, R. Brisco, S. Licata, C. Meyers. NOT PICTURED: E. Skaggs, sponsor.



It's like this..

And further more....



Among other interesting programs, F. T. A. members served as guides at Ruskin's Open House, publicized NEA week, and at that time provided refreshments for the faculty. Guest speakers, films, and panel discussions help make the meetings interesting and informative. Ruskin has every reason to be proud of her "Future Teachers."

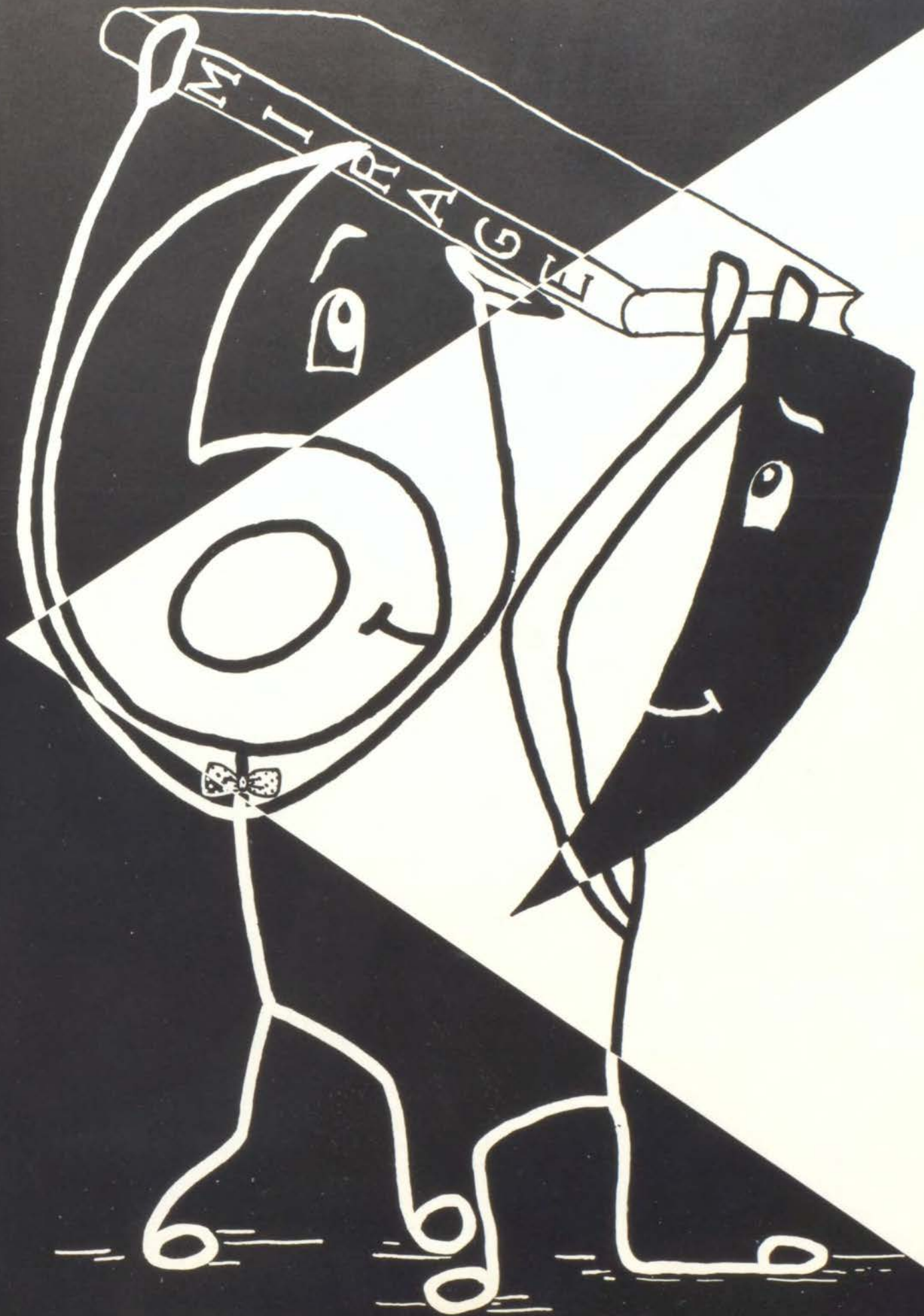
SPONSORED BY F.T.A.

On October 10, 1960 a new era of Ruskin High School was ushered in when a group of students formed the Ruskin Chapter of the Future Teachers of America. The F. T. A., as it has come to be known, is a service club for students who anticipate entering the teaching profession or who wish to know more about it.



It's in the book!





A  
D  
V  
E  
R  
T  
I  
S  
I  
N  
G



Moving  
Storage

Packing  
Shipping

## SUPERIOR TRANSFER SERVICE

Agents Wheaton Van Lines  
"Make Your Move Superior"

Phone JE 1-8400  
3242 Gillham Road  
Kansas City 2, Missouri

Remember

## BLUE RIDGE ROLLER RINK

7600 Blue Ridge Extension  
Kansas City, Missouri



## TINY'S STUDIO

6909 Bannister Road

SO 1-1291

Babies and Children

A Specialty

In Our Studio



Compliments of

BROWN JUG

115 and 71 Highway

BUD OSTERMEYER

Watch Repair

Major's Gift Shop

Bunny's Gift Shop

LOMA VISTA LANES

8756 Blue Ridge  
SOUTH 3-3200

Bowl at the Finest!  
Bowl at the Sign  
of the Magic Triangle!

WALDO GRAIN COMPANY

Seed - Dog Food - Fertilizer

7801 Wornall

EMERSON 3-1111

## SMITH SECRETARIAL SERVICE

10934 S. 71 Hiway  
SOUTH 1-0864

COMPLETE LETTER SHOP

AUTOMATIC ADDRESSING EQUIPMENT - - ELECTRONIC STENCILS

## ROSEHILL GARDENS

E. ASJES

Growers of Fine Evergreens and Shrubs

9300 Holmes Street

JACKSON 3-2443

Since 1914

Congratulations to  
the Senior Class  
of 1961

DRAPERY CENTER

"A House of Service & Quality"

Ruskin Shopping Center  
11134 Blue Ridge  
SOUTH 1-1599

KEN'S BARBER SHOP

Ruskin Shopping Center

7 Barbers--No Waiting

Flat Top--Specialties

Compliments of

# **BLUE RIDGE UNITED SUPER**

95 & Blue Ridge

FEATURING FRIENDLY SERVICE

Bakery on Premises

Country Kitchen

Everyday Low Prices

Also

A fine line of famous Wolferman's items



# TINY'S STUDIO



6609 Bannister  
SO 1-1291  
One of the  
Largest Wedding  
Photographers  
in the  
Kansas City  
Area



DR. J. A. RANDALL

Chiropractor

9212 East 50 Highway

FL 3-8646

Your

DAIRY QUEEN STORE

87th & Blue Ridge

Serving You the Finest

## CREST DRIVE-IN

114 and 71 Highway

SOuth 1-5435

Congratulations and Best Wishes

To The Senior Class of 1961

**CUNNINGHAM'S**

Tot & Teen Wear

Ruskin Shopping Center  
SO 1-8885

**HOLMES PARK BEAUTY SHOP**

Styling For YOU

SOuth 1-7432

9600 Elmwood

Kansas City 37, Missouri

**FRANCE SEWING CENTER**

110th One Block East of  
71 Highway

Fabrics, Sewing Supplies  
Singer Sewing Machines  
Sewing Services

**HENHOUSE SUPER MARKET**

8230 Wornall Road

Fresh Dressed Poultry,  
Eggs and Quality Meats

Open 7 Days Each Week  
8 A.M. to 10 P.M.

Congratulations to the students  
of Ruskin High School

**ALBIN'S**

112 and 71 Highway  
Hickman Mills, Missouri

Hamburgers      Sandwiches  
Malts              Ice Cream  
Soft Drinks

CONGRATULATIONS TO CLASS OF "61"

**RUSKIN HARDWARE**

11152 BLUE RIDGE SO 1-8335

COMMUNITY TRUST GAINED THROUGH PERSONAL SATISFACTION

**ALLison**  
**HOME IMPROVEMENT**

FRANK ALLISON  
SOuth 1-8539

**GENERAL CONTRACTOR**

7405 E. 109 Terrace  
Kansas City 34, Missouri

**RAY WILSON SHOES**

Shoes for the entire family.

Ruskin Heights Shopping Center

SO 1-6591

Compliments of

**BEN FRANKLIN**

Ruskin Center

Where the Value is  
High and Cost Low

Nationally Known--Locally Owned

Compliments of

**TOWN & COUNTRY FORD**

11116 So. 71 Hiway

SO 1-1881



Ruskin High School

**TINY'S STUDIO**

6609 Bannister Road

COMMERICAL PICTURES

of all types, banquets,

aerial photographs





## TINY'S STUDIO

Sports Photography

a

Specialty

SOuth 1-1291

News-Photos-Features

Commercial Printing

## JACKSON COUNTY ADVOCATE

Grandview

Missouri

118th SOUTH 71 HIGHWAY

## ARMY-NAVY SURPLUS

SOuth 1-0200



OPEN SUNDAYS

Phone: SOuth 1-6700

**GATEWAY SPORT SHOP**

TRUMAN CORNERS

GRANDVIEW, MISSOURI

to  
Gary's Skelly Service  
from  
Brown & LaPresto  
110 & 71 Highway  
SO 1-9031



Capital Bowling Lanes  
11611 So. 71 Highway  
Hickman Mills 34, Missouri

Compliments  
of

## **CREST FOOD CENTER**

116 and 71 Highway and 305 North Scott  
Hickman Mills Belton  
Missouri

Bunny's Card and Gift Shop  
Red Bridge Shopping Center  
110th and Holmes

Ruskin Height's TV  
110th & Hillcrest  
Expert TV and Radio  
Service For All Makes  
SO 1-8227

SOLD

H.

R.

THE ONLY SIGN  
THAT COUNTS



**REALTY CO.**

**SALES**

**LOANS**

**INSURANCE**

FAST

COURTEOUS

SERVICE

THREE LOCATIONS SERVING  
THE KANSAS CITY AREA

SO. 3-1700  
8706-C BLUE RIDGE  
LOMA VISTA SHOPPING CENTER

DE. 3-7471  
5717 Troost  
Kansas City

CL. 2-1700  
11019 E. 23rd.  
Independence



## THE MAJOR'S GIFT SHOP

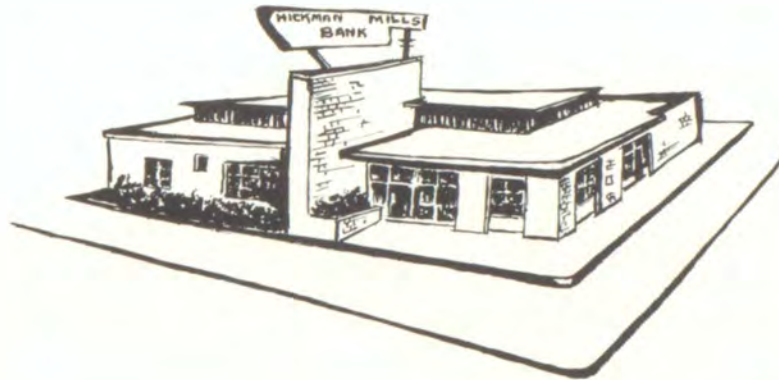
Hallmark Cards - Westmoreland Glass  
Frankoma Pottery  
11606 SO. 71 Highway - SO, 1-2752  
Hickman Mills 37, Mo.

Phone SO, 1-7831

## WAYNE'S SINCLAIR SERVICE

Free Pick-Up & Delivery  
Scientific Tune Up - Brakes - Mufflers  
Shocks - Goodyear Tires  
Auto Lite Batteries  
Wheel Balance - Lubrication  
Car Wash & Motor Clean  
We Specialize in Quality  
11517 & 71 Hiway Hickman Mills, Mo.

Compliments of



## HICKMAN MILLS BANK

"Your Community Bank"  
117th and South 71 Highway · Surburban Kansas City  
Hickman Mills, Mo.  
Phone SO 1-5415  
Member F.D.I.C.  
Established 1921



## TINY'S PORTRAIT STUDIO

Photographer of High School Activities

6609 Bannister Road South 1-1291

Hickman Mills 34, Missouri  
One Block West Of Blue Ridge

Compliments of  
BISHOP'S "66" SERVICE

110th & 71 Highway      SP 1-9056

Courtesy of  
BASIL TAYLOR'S

Groceries                      Meats  
SO. 1-5654

Free Estimates

Phone SO 1-5456

"We move the earth for you."

## K. L. PERRY

Basements                  Driveways                  Parking Lots

Ponds                  Fill Dirt                  Roads

Basement and Earth Digging

R. R. No. 16

8900 Kemper Road

Kansas City 38, Missouri

Compliments of  
CLOVERSET FARM

Roses                      Landscaping  
10550 Wornall Rd.      WI. 2-3424

For Bowling At Its Best -- It's

KING LOUIE EAST

7910 Troost

KING LOUIE WEST

87th Metcalfe

Shampoo and Set  
\$1.25

Cold Wave  
\$4.50 & Up

JIMMIE'S and NEVA'S  
BEAUTY SALON  
3109 Forest - VA. 1-9451  
Open  
Thurs. - Fri. Evenings  
No Appointment Necessary

FLAGG BROS. SHOE STORES  
Style Leaders Wear  
Flagg Bros. Shoes  
  
3140 Troost Street  
1007 Main Street  
Kansas City, Missouri

DUANE'S

Florsheim for Men  
Vitality-Accent's-Velvet Step  
for Teens and Women  
Weatherbird for Children

Truman Corners

KEN'S SKELLY SERVICE

7653 Troost

K. C. MO. JA 3-9890



Expert Mechanical Work  
18 Years Automotive Experience

Lessee  
Kenneth R. Kinsey

Compliments of

HICKMAN MILLS FURNITURE

11523 & 71 Highway

Hickman Mills, Missouri

SO 1-6090

Horseback Riding  
Old Fashioned Hayrides  
Scenic Trails  
Call

BENJAMIN'S

SOuth 1-5055  
87th & Hillcrest Road  
Hickman Mills, Missouri

Expert Beauty Care

ELIZABETH'S BEAUTY SALON

11111 Orchard

Hickman Mills 34, Missouri

Teens A Specialty

Compliments of

JIM SUMMERS SERVICE

115th & Blue Ridge

SO 1-9092



# ADAMSADAMSADAMSADAMS

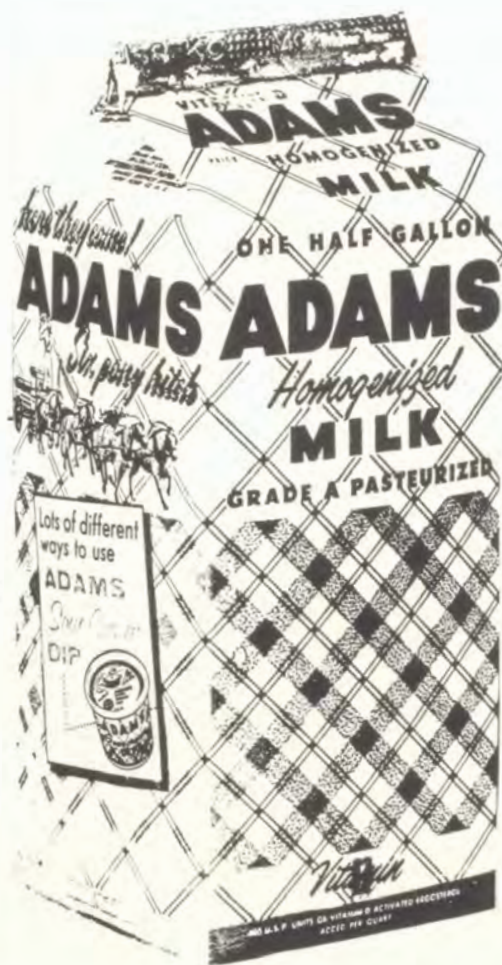
Bring

home

ADAMS MILK

and

save!



# ADAMSADAMSADAMSADAMS

**MILLER MATERIAL &  
SUPPLY CO.**

10768 71 Highway

SOuth 1-7390

Compliments of

**HICKMAN GARAGE**

11515 71 Highway

SOuth 1-6106

**TINY'S STUDIO**

6609 Bannister Road

SOuth 1-1291

Hickman Mills 34, Missouri  
One block west of Blue Ridge

Pictures for every occasion

**RUSKIN HI-FI and RECORD CENTER**

Stereo and Hi-Fi Sets and Systems, Components,  
Cabinets, Records, Television, Radios, Cameras,  
Film and Film Finishing

11148 Blue Ridge

SOuth 3-0367

**SALES AND SERVICE**

HICKMAN MILLS STANDARD

A complete line of tires  
batteries and accessories

Service Calls

SOuth 1-9044

Ellis Sudduth

RUSKIN HIGH SCHOOL  
CAFETERIA

For the least you get

the most of the best

Congratulations to the Class of '61

**HYDRO-BUTANE GAS COMPANY**

Hickman Mills, Missouri

SOuth 1-5522

Homer L. Braswell, President

Carl L. Braswell, Vice-President

Compliments of:

**MID-AMERICAN  
TRUCK LINES, INC.**

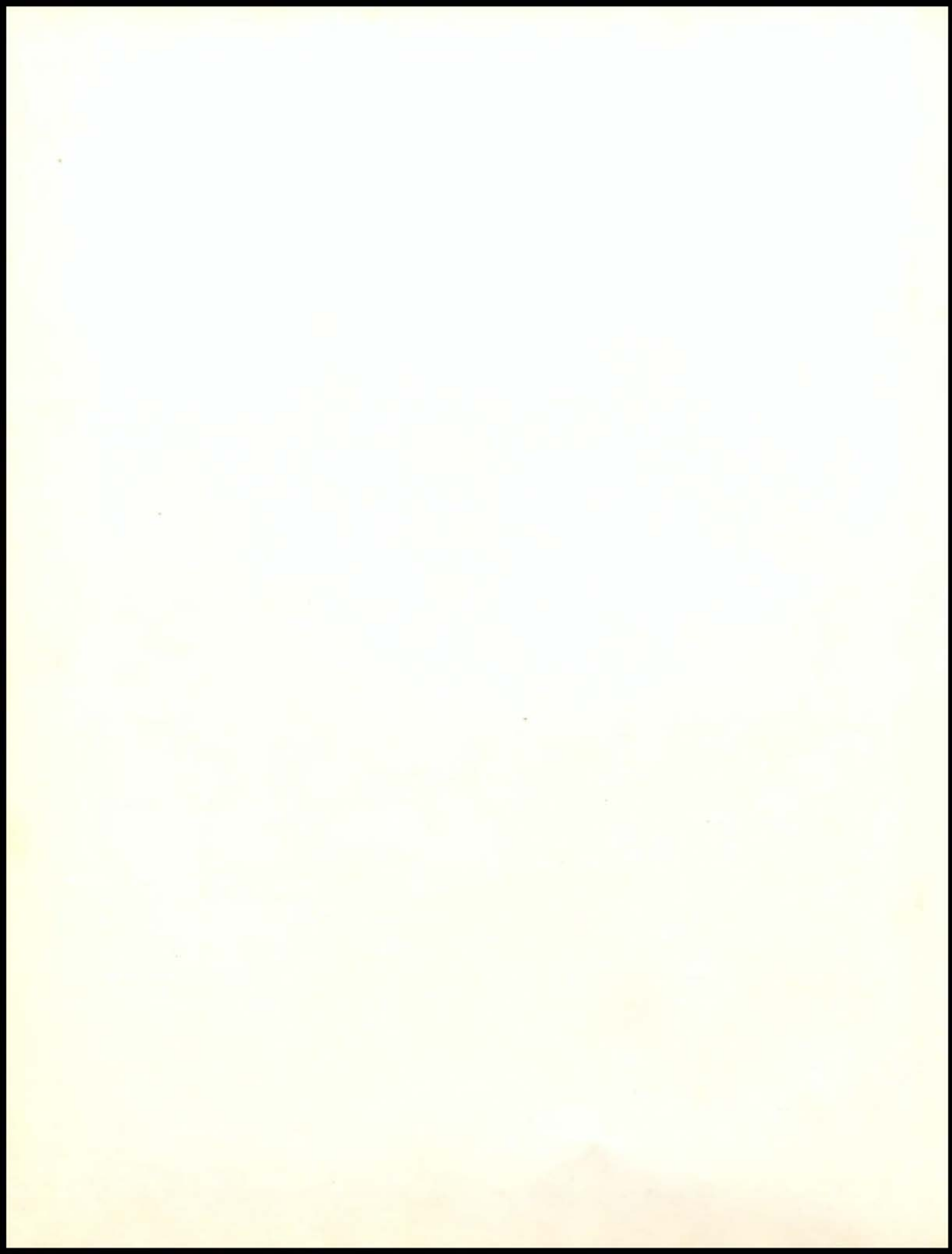
Chicago, Illinois  
Kansas City, Missouri  
Wichita, Kansas  
St. Joseph, Missouri  
Hutchinson, Kansas

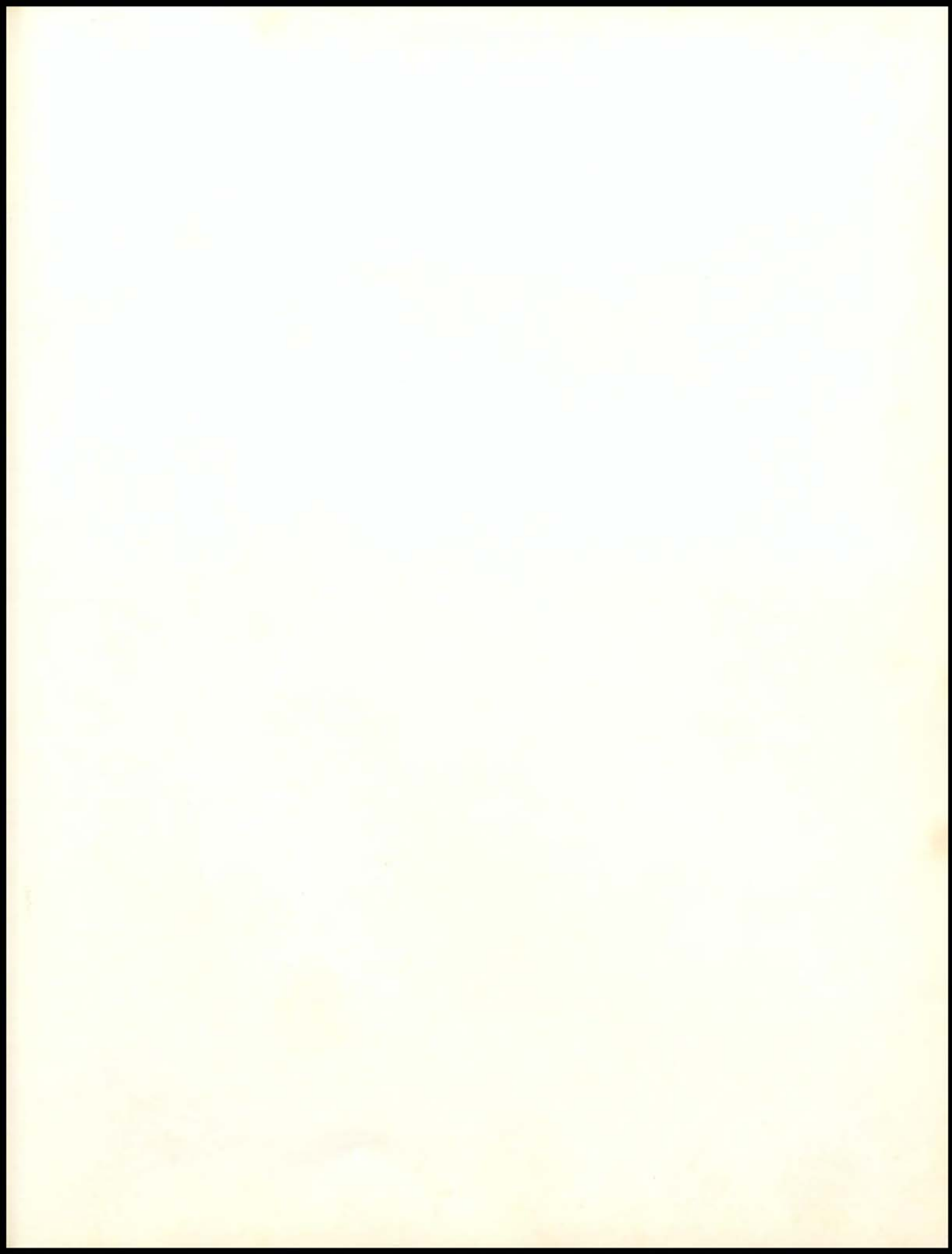
DAILY DIRECT SERVICE













*Myers*  
YEARBOOKS  
*in depth*



