

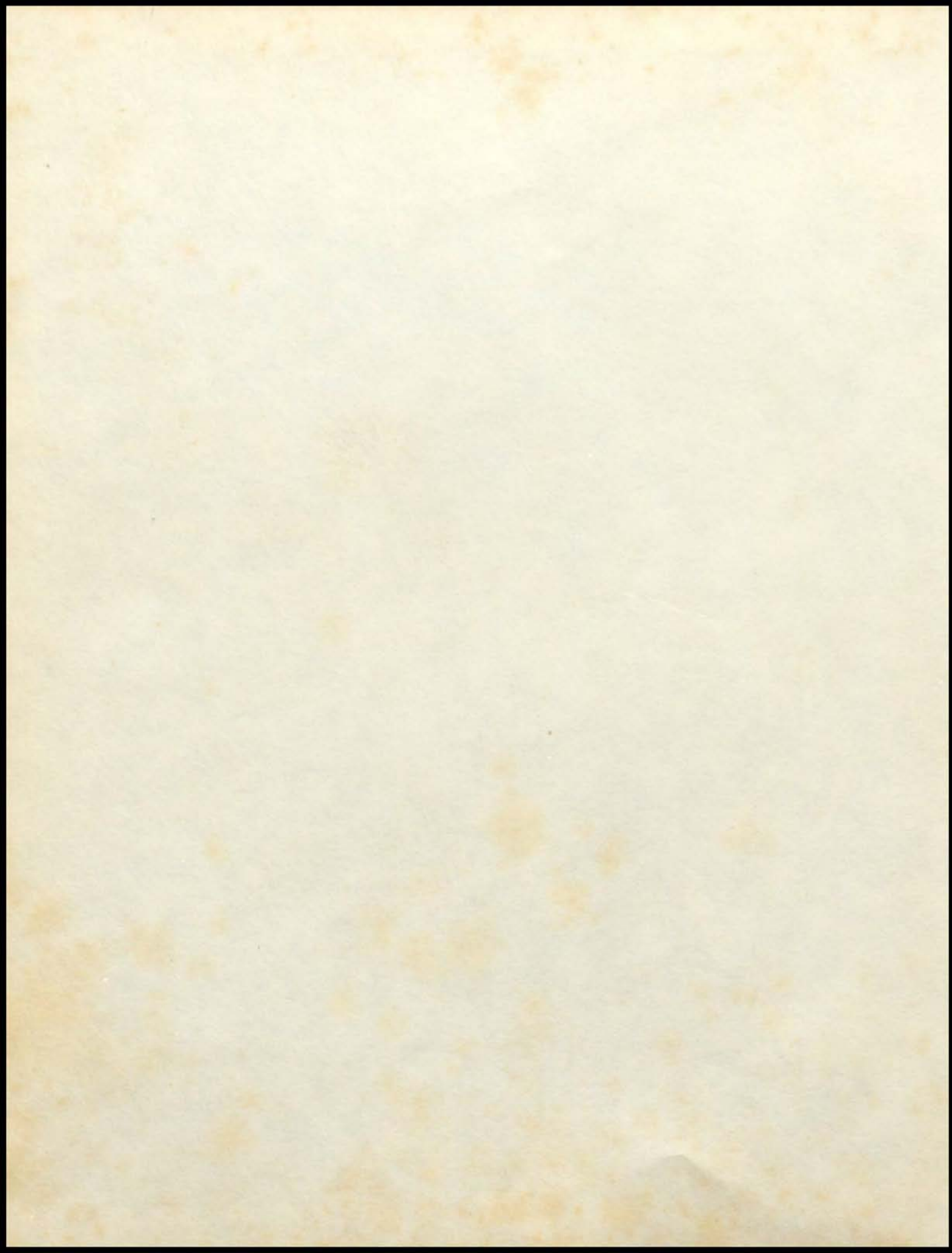


'60

MIRAGE









Ruskin High School

MIRAGE

1960

PUBLISHED BY THE CREATIVE WRITING CLASS

Foreword

To give the reader a review
Of the past school year in words
And in pictures is the purpose of the
1960 Mirage. It is hoped that in the future
The former student will look back many times and
Recall memories from his days at Ruskin High School.



Table of Contents

Board of Education	4
Administration	5
Faculty	8
Classes15
Organizations53
Athletics77
Activities87
Advertisers	115



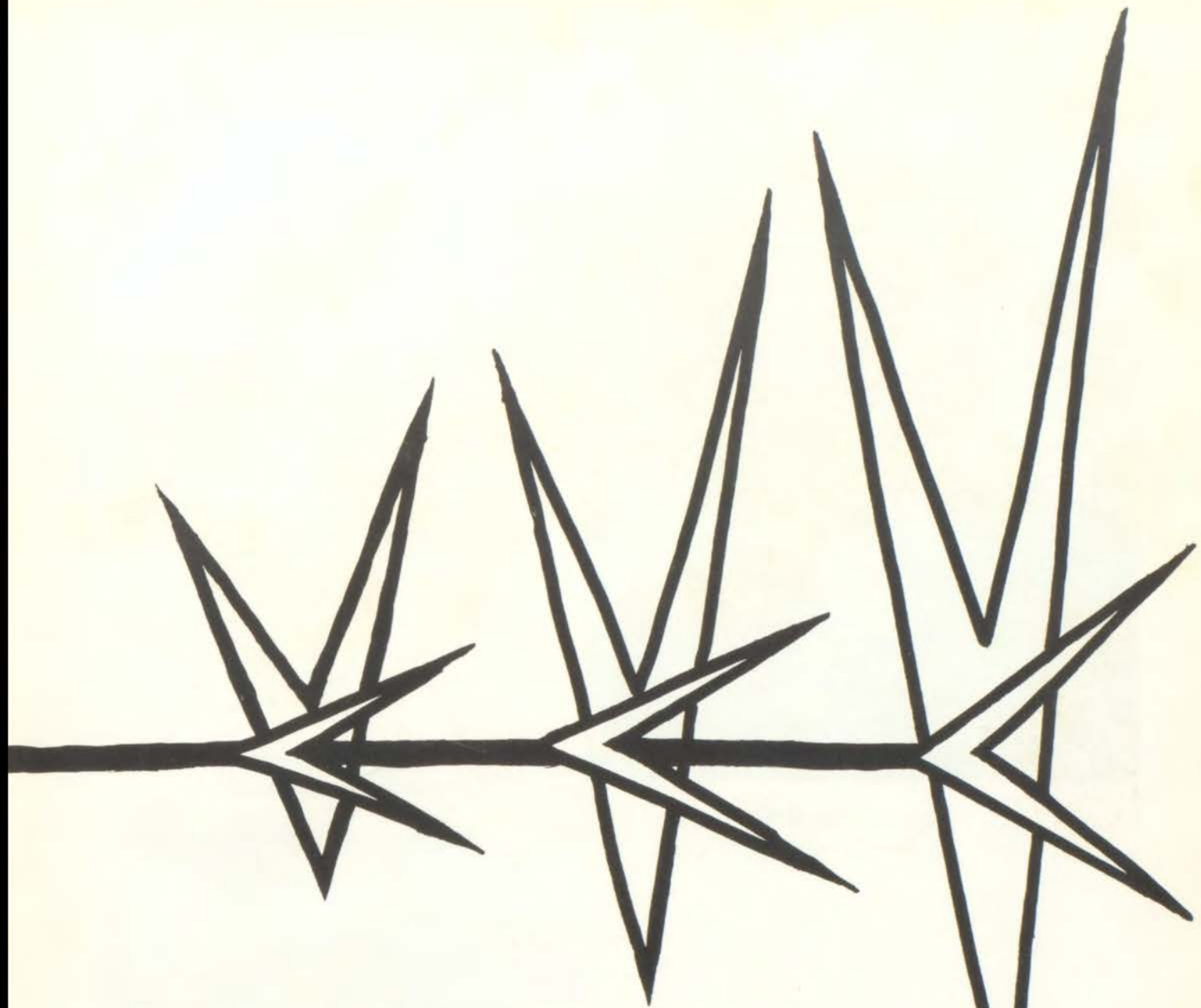
Board of Education



LEFT TO RIGHT: Joseph Nesbit, Assistant Superintendent; Marvin Langford; Don Newkirk; Wallace Pinkepank; Tom Foraker, Superintendent; Billy Wall, President; A. A. McElroy; Robert Barden; Paul Province, Business Administrator.

These six gentlemen are probably the hardest working group in Consolidated District No. 1. They labor without pay and are elected by popular vote, each serving a term of three years.

The students of Ruskin High School sincerely appreciate their efforts in making this educational institution one of the outstanding high schools of the state of Missouri



**Faculty &
Administration**

RUSKIN'S ABLE



MR. TOM FORAKER
Superintendent

Mr. Foraker, we, the Mirage Staff, in the name of the Ruskin student body wish to express appreciation to you for your part in the great progress our school district has made this year. Your friendly attitude has warmed the hearts of everyone. May the spirit of Ruskin always be with you.

MR. JOSEPH H. NESBIT
Assistant Superintendent

Mr. Nesbit, you have earned the respect of all those connected with this school district. We offer to you our heartiest best wishes for continuing success.



ADMINISTRATORS

Mr. Steck, we extend to you our sincere appreciation of your ever-guiding faithfulness to Ruskin High School and to this community. We will always remember your constant efforts to help the student body and the faculty members.



BLAINE E. STECK
Principal

Assistant Principal
WILLIAM P. MATTHEWS



Mr. Matthews, we welcome you to Ruskin as a member of our scholastic family. We are proud to have you with us and hope that we may earn the right to have you proud of us.

FACULTY

GEORGE BARRATT Mathematics, science
M.E. , Oklahoma State University

GEORGE BLOSSER Science
B.S. , Missouri University

JAMES BODENHAMER Metal working, woodwork-
ing, track coach, general shop
B.S. , Central Missouri State Teachers College

MILDRED CASPER English, speech
B.S. , Northwestern State College

MAURICE COTTER Latin, English
B.S. , Central Missouri State Teachers College

MARY DOWELL Spanish, English
B.S. , Maryville State College

RUSSELL DOWELL Boys physical education
B.S. , Northwest Missouri State Teachers College

RICHARD BOONE Bookkeeping, careers, business
law, business arithmetic
B.S. , Central Missouri State Teachers College



GEORGE BARRATT



GEORGE BLOSSER



MAURICE COTTER



MILDRED CASPER



JAMES BODENHAMER



MARY DOWELL



RUSSELL DOWELL



RICHARD BOONE



BESSIE GAISER



PAUL HALL



MABEL HALE



HERBERT HAMANN



MELBA HAMANN



EDD JOHNSTON



BETTY HUTSON



MARJORIE LANGFORD

BESSIE GAISER Librarian
M. S. , Kansas State Teachers College

PAUL HALL Drafting, Driver Education, Metal
Working
B. S. , Kirksville State Teachers College

MABEL HALE Mathematics
B. S. , Northwest State Teachers College

HERBERT HAMANN Coach, Science
M. E. , University of Missouri

MELBA HAMANN Commerce
B. S. , University of Missouri

EDD JOHNSTON Counselor
B. S. E. , Arkansas State Teachers College

BETTY HUTSON Art
A. B. , Central College

MARJORIE LANGFORD Counselor
B. S. , University of Missouri



DOROTHY McCREARY



DOUGLAS LAWRENCE



HELEN MAPLES



SHIRLEY MASTERSON



TOM MASTERSON



REX MAY

DOROTHY McCREARY English
B. A. , University of Kansas City

DOUGLAS LAWRENCE Social studies
M. Ed. , University of Kansas City

HELEN MAPLES Home economics, Related Arts
B. S. , University of Arkansas

SHIRLEY MASTERSON English
B. A. , William Jewell College

TOM MASTERSON Speech therapist
B. S. , Central Missouri State College

REX MAY Science
B. S. , University of Kansas

FAYRENE MAY English, Social studies
B. A. , Southeast Missouri State College

CHARLES MAUPIN Science
B. S. , Central Missouri State Teachers College



FAYRENE MAY



CHARLES MAUPIN



VIRGIL MEREDITH

VIRGIL MEREDITH Social Studies, Mathematics
B. S. , Central Missouri State Teachers College



ROGER MILLER

ROGER MILLER Social Studies, Psychology
B. S. , Northwest Missouri State Teachers College

LOIS MOORE English, Creative Writing
M. S. , University of Illinois

CLOYD RAGNER Mathematics, Physics
M. A. , University of Kansas City

WILLIAM NICHOLSON Crafts, Shop
M. A. , Kansas State College

VELMA READ Art, Art History
A. B. , Central Missouri State Teachers College

M. JEAN SCOTT Speech, Dramatics
M. S. , Kansas State College

KENNETH SEWARD Band
B. M. , Central College, Swinney Conservatory of
Music



LOIS MOORE



CLOYD RAGNER



WILLIAM NICHOLSON



VELMA READ



M. JEAN SCOTT



KENNETH SEWARD

NANCY SEWARD Instrumental music
B. M. E. , Central College

MABEL SMITH English
B. A. , Central Missouri State

GEORGE STATHOS English I, civics, careers
B. S. , Central Missouri State

HELEN SKAGGS Algebra, general math
M. A. , University of Kansas City

MARGUERITE STILLEY Home economics
B. S. , Iowa State College

FRED TARRY Chorus, music appreciation
B. M. E. , University of Kansas

SUE TRAVIS General business, typing
B. S. , Kansas State Teachers College

TERRY TERRIL American history, world history,
civics
B. S. , Kansas State Teachers College



NANCY SEWARD



MABEL SMITH



GEORGE STATHOS



HELEN SKAGGS



MARGUERITE STILLEY



FRED TARRY



SUE TRAVIS



TERRY TERRIL



JAMES WARD



JAMES WHITWORTH



RAY WILLIAMSON



JOSEPHINE WOCHNER



ARCH WRISINGER



SARAH SUDDUTH



BERNICE PHILLIPS



HAZEL DOBBS

JAMES WARD Drafting
B. S. , Northeast Missouri State College

JAMES WHITWORTH Social studies
B. S. , Missouri Valley College

RAY WILLIAMSON Social studies, Family Living
B. S. , Northeast Missouri State Teachers College

JOSEPHINE WOCHNER Girls' physical education
B. S. , Columbia University

ARCH WRISINGER Commerce
B. S. , Northwestern State Teachers College

SARAH SUDDUTH Secretary

BERNICE PHILLIPS Secretary

HAZEL DOBBS, R. N. School nurse
University of Kansas Medical Center



Show them how,
Kevin!



MRS. MARY CANTWELL
Assistant librarian
clerk

FACULTY CHRISTMAS PARTY

"A Real Blast"

What's the matter, Jenni-
fer; does Santa remind you
of Mr. Foraker?



Go
Man!



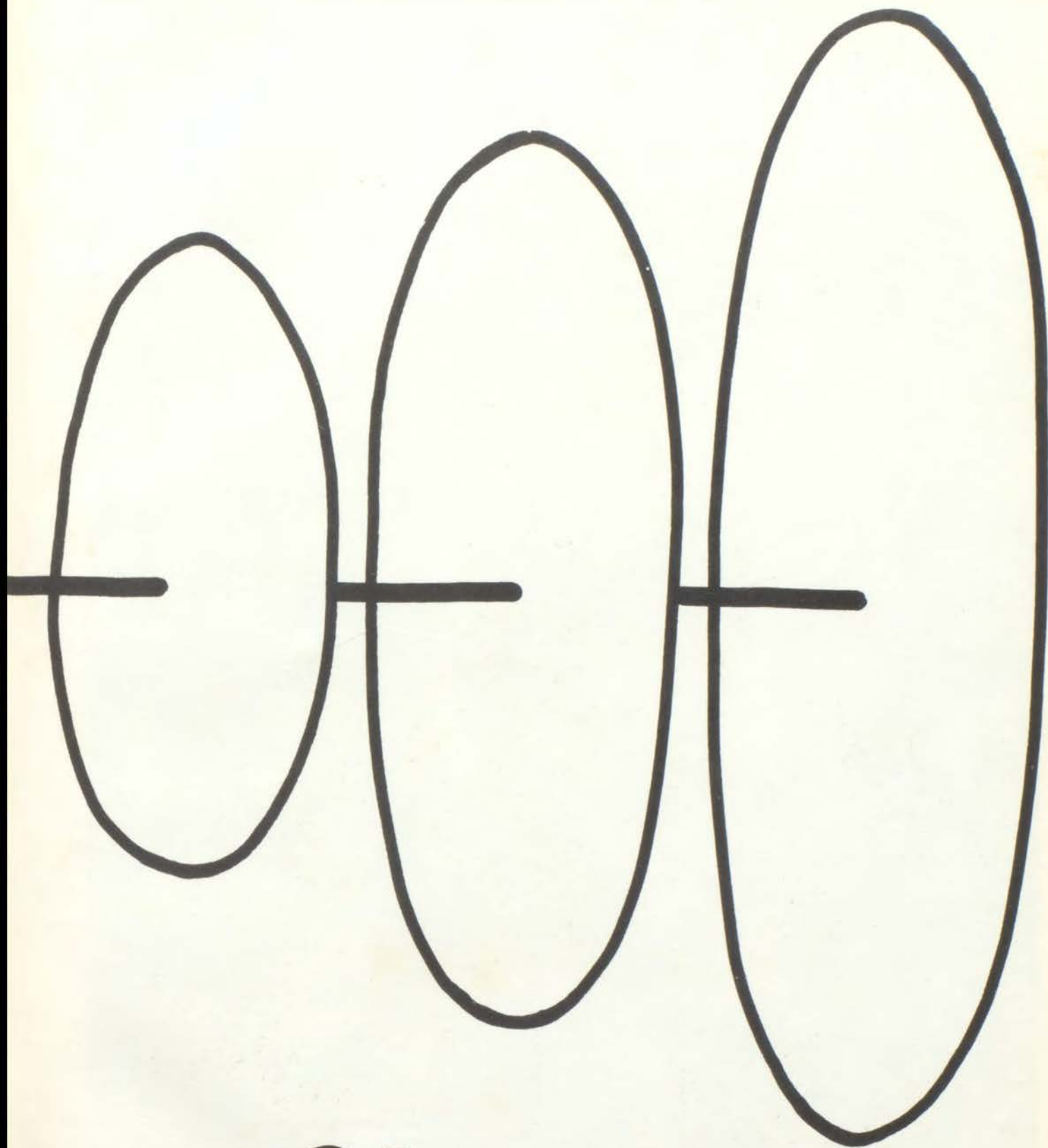
Look! Mr. Blosser
has two just alike!



Wow! She made
it.



The
party's
over.



Classes



President: Tom Mosley
Secretary: Rae Blevens

Vice-President: Ken Pery
Treasurer: Donna Anderson

SENIOR CLASS OFFICERS



DONNA ANDERSON



FRANKIE AGEE



LINDA ABERNATHY



CAROL ADAMS



PATRICIA ALLISON



CONNIE ALLEN

DONNA ANDERSON

Publications 12; class treasurer 12; vocal music 9, 10, 11, 12; Pep Club 10, 11, Pep Club Checker 11; library 9; office girl 10, 12; RGAA 9; Glee Club; librarian 10, 11.

FRANKIE AGEE

Vocal music 12; RGAA 10, 11, 12; Pep Club 11, 12; library 10.

LINDA ABERNATHY

Publications 12; Pep Club 9; office girl 12; Mirage Editor-in-Chief 12; dramatics 10; RGAA 9, 10, 11, 12; Honor Society 10, 11, 12.

CAROL ADAMS

Publications 12; dramatics 11, 12; District Student for 12 years.

PATRICIA ALLISON

Dramatics 10; RGAA 9; Pep Club 9; office girl 11, 12.

CONNIE ALLEN

Publications 12; vocal music 12; dramatics 11, 12; RGAA 10, 11, 12; Pep Club 11, 12; office girl 12.

PATRICIA ALEXANDER

DENNIS AUE



PATRICIA ALEXANDER



DENNIS AUE

SUZANNE BEACH

Transferred from Sherman, Texas 11.

KAREN BAKER

Vocal music 9, 10, 12; dramatics 10, 11, 12; RGAA 9; Pep Club 9, 10, 11, 12; office girl 11.

MICHAEL BANTA

"R" Club 11, 12; Boys State 12; track 11, 12; football 11, 12.

CAROLYN BELCHER

Band 9, 10; F. H. A. , president 11, 12; RGAA 9, 10, 11, 12; Pep Club 10, 11, 12; Honor Society 11, 12; office girl 9, 12; Girls State 11.

LEONA BEESON

Dramatics 10; RGAA 9; Pep Club 9, 10, 11, 12; cheerleader 12; Honor Society 11, 12; office girl 9, 11.

WILLIAM BLISS

Transferred from Escabia High 12.

RAE BLEVINS

Publications 12; band 9, 10, 11, 12; F. H. A. 11, 12; RGAA 10, 11, 12; Pep Club 11, 12; class officer 12.

NANCY BLEICH

Transferred from Shawnee Mission East 12.



SUZANNE BEACH



KAREN BAKER



MICHAEL BANTA



CAROLYN BELCHER



LEONA BEESON



WILLIAM BLISS



RAE BLEVINS



NANCY BLEICH



SANDY BLUNK



WILLIAM BROYLES



SHARON BROWN



MARCIA BRENTON



WILLIAM BRIDGEWATER



RICHARD BUSSELL



GARY BUTLER



MARIE CARUSO

SANDY BLUNK

Publications 12; vocal music 9; F. H. A. 12; RGAA 9, 10; Pep Club 9, 10, 11, 12; library 12.

WILLIAM BROYLES

SHARON BROWN

Publications 12; RGAA 12; vocal music 11, 12; Pep Club 11, 12.

MARCIA BRENTON

Publications 12; F. H. A. 11, 12; RGAA 9, 10, 11, 12; Pep Club 12; Honor Society 10, 11, 12; office girl 12; Art Club 12.

WILLIAM BRIDGEWATER

Vocal music 9, 10, 11, 12; dramatics 11, 12; football 9, 10, 11; track 10, 11, 12.

RICHARD BUSSELL

GARY BUTLER

MARIE CARUSO

Office girl 12.



WILLIAM CLARK



TODD CHRISTOPHERSON



JUDY CHUNN



CAROLYN CLEVELAND



PATRICIA CLINE



SHARON CHESNUT

WILLIAM CLARK

TODD CHRISTOPHERSON

JUDY CHUNN

Vocal music 11,12; RGAA 9,10,11,12; Art Club 12.

CAROLYN CLEVELAND

Vocal music 11,12; Glee Club librarian 11; RGAA 10, 11, 12, president 12; Pep Club 11,12; office girl 12.

PATRICIA CLINE

Publications, Hi-Light co-editor 12; vocal music 9,10, 11,12; chorus librarian 11,12; Glee Club librarian 10, secretary 10; Pep Club 9,10,12; Honor Society 10; Student Council 12, secretary 12; office girl 12; Homecoming Queen 12.

SHARON CHESNUT

Vocal music 12; F. H. A. 11,12, officer 12; RGAA 10,12; office girl 11,12.

JAMES COCHRAN

Football 9,11; track 9.

MARIE COGBILL

Vocal music 9,10,12; RGAA 9,10; Pep Club 10,11,12; Honor Society 11,12; office girl 12.



JAMES COCHRAN



MARIE COGBILL



JOHN COLGAN

JOHN COLGAN
Vocal music 11; football 11.

JAMES COX

PEGGY COX
Vocal music 10,12; RGAA 10,11,12; office girls 12.

LARRY DAVIS
Vocal music 10.

ROBERT DHONE

JANET DILLENBECK
Pep Club 9,10,11,12; RGAA 9,10,11,12; F. H. A. 11,12.

CHARLES DUNCAN

JOHN DYE



JAMES COX



PEGGY COX



LARRY DAVIS



ROBERT DHONE



JANET DILLENBECK



CHARLES DUNCAN



JOHN DYE

ARLENE ELLIOTT

Vocal music 9, 10; office girl 11; F. H. A. 12.



ARLENE ELLIOTT

DONNA EMBRY

Student Council 9; office girl 11, 12; Pep Club 9, 10, 11, 12; RGAA 9, 10, 11, 12, treasurer 12, vice-president 11; Glee Club 12; vocal music 12; dramatics 10.



DONNA EMBRY

DIANNE EYMAN

Dramatics 11, 12; RGAA 9; Art Club 12.



DIANNE EYMAN

MARILYN FAGAN

Dramatics 10; RGAA 9, 12; Pep Club 9.



MARILYNN FAGAN

JUANITA FAULKNER

F. H. A. 11, 12; library 12.



JUANITA FAULKNER

JOYCE FISCUS

Transferred from Archie High school 12.



JOYCE FISCUS

BEVERLY FIRGUSON

Transferred from Belleville Township High School 12; band 12; Glee Club 12.



BEVERLY FIRGUSON

RONALD FIGGINS



RONALD FIGGINS



LARRY FLETT



RICHARD FLOWERS



KENNETH FRISBY



ROBERT FREEMAN



KAREN GARRETT



DENNIS GILE



LINDA GERRED



IVYL GILE

LARRY FLETT

Art Club 12; "R" Club 11,12; track 9; basketball 11,12.

RICHARD FLOWERS

Vocal music 12.

KENNETH FRISBY

Publications 12.

ROBERT FREEMAN

KAREN GARRETT

Homecoming attendant 12; Art Club 12; Pep Club 11, 12; office girl 12.

DENNIS GILE

Band 9, 10, 11; Art Club 12; "R" Club 10, 11, 12; football 9, 10, 11, 12; track 9, 10, 11, 12.

LINDA GERRED

Publications 12; band 9, 10, 11, 12; Pep Club 9, 10, 11, 12, treasurer 12; Honor Society 10, 11, 12; RGAA 9, 10, 11, 12.

IVYL GILE

Vocal music 9.



JEROME GINDEN



JAMES GLEASON



RONALD GOODWIN



ALVIN HALLER



ANNE HABEL



MIRIAM HALLIDAY

JEROME GINDEN

Optimist speech contest winner 10; dramatics 11; football 10, 11; junior play.

JAMES GLEASON

Vocal music 9, 10.

RONALD GOODWIN

Football 9, 10, 11, 12; "R" Club 9, 10, 11, 12; Student Council 9, 10, 11, 12; basketball 9, 10, 11, 12; class officer 9, 10; track 9, 10, 11, 12; Student Council president 12, vice-president 11.

ALVIN HALLER

ANNE HABEL

Vocal music 10, 11, 12; Pep Club 9, 10, 11; publications 12; RGAA 9, 10, 11, 12.

MIRIAM HALLIDAY

Art Club 12; vocal music 9, 10, 12; Pep Club 10, 11.

VENDETTA HALLUM

Vocal music 9, 10, 11.

PENELOPE HARVEY

Office girl 10, 11; dramatics 10, 11, 12.



VENDETTA HALLUM



PENELOPE HARVEY



MICHAEL HENNESSY

MICHAEL HENNESSY

Junior play usher 11; football 9; dramatics 12; track 9, 10, 11.



LYNDA HERMANN

LYNDA HERMANN

Publications 12; vocal music 9, 10; Art Club 12; office girls 11, 12; junior play 12; RGAA 9, 11, 12; dramatics 11, vice-president 12.

ROBERT HORNBUCKLE

"R" Club 11, 12; basketball 10; football 10, 11, 12; track 10, 11, 12; class officer 11.

PATRICIA HORNBUCKLE

JUDITH HUNT

PATRICIA IVERSON

Vocal music 9, 12; F. H. A. 12; RGAA 9, 10.

FRANK JEFFERSON

Football 9; basketball 9, 10, 11; class officer 9; track 9.

ALAN JEWELL

Band 9, 10; student in district for 12 years.



ROBERT HORNBUCKLE



PATRICIA HORNBUCKLE



JUDITH HUNT



PATRICIA IVERSON



FRANK JEFFERSON



ALAN JEWELL

RUSSELL JOHNSON

Vocal music 12; Student Council 9; football 9, 10, 11, 12;
"R" Club 12; Art Club 12.

ROBERT KENAGY

Football 9.

DAN JONES

Basketball 9, 10; track 9; assemblies 9, 10, 12.

LOUIE JONES

Transferred from Center High 11.

PEGGY JONES

Transferred from Center High 11; vocal music 11, 12; li-
brary 12.

JUDITH JOHNSTON

Library 11, 12.

LINDA KISTLER

Transferred from Shawnee Mission North 11; vocal music
12; RGAA 12; Pep Club 12.

DAVID KAYS



RUSSELL JOHNSON



ROBERT KENAGY



DAN JONES



LOUIE JONES



PEGGY JONES



JUDITH JOHNSTON



LINDA KISTLER



DAVID KAYS



SHARON KOBEL



JOSEPH KNITTER



CHARLOTTE KLINE



LINDA LAKEY



BARBARA LANGSTON



PATRICIA LANGSTON



HAROLD LASSWELL



RALPH LAWSON

SHARON KOBEL
Vocal music 9, 10.

JOSEPH KNITTER
Third place in Voice of Democracy Contest 12; football 9.

CHARLOTTE KLINE
Vocal music 9; F. H. A. 12; Pep Club 10, 11, president 12;
office girl 12.

LINDA LAKEY
RGAA 9; Pep Club 9; Library staff 12; Art Club 12.

BARBARA LANGSTON
Publications 12; Co-Editor Mirage 12; vocal music 12;
F. H. A. 11, secretary 12; RGAA 11, 12; Pep Club 11, 12;
office girl 11, 12; Homecoming royalty 11.

PATRICIA LANGSTON
F. H. A. 12; RGAA 11, 12; Honor Society 11, 12; office
girl 12; Homecoming royalty 12.

HAROLD LASSWELL
Vocal music 11.

RALPH LAWSON
Publications 12; vocal music 9, 10, 12; class vice-presi-
dent 10; "R" Club 11, 12; Student Council 11; basketball
9, 10, 11, 12; football 9, 10, 11.



CARNIE LITTLEFIELD



LARRY LEONARD



RONNIE LOCHERT



DENNIS LOVELAND



ROSE LOWERY



SHIRLEY MALICOAT

CARNIE LITTLEFIELD

Vocal music 10,11,12; band 9,10; publications, editor-in-chief of HI-LIGHT 12; junior play; Honor Society 10, 11,12, president 12; Student Council 12.

LARRY LEONARD

Transferred from North Kansas City 11.

RONNIE LOCHERT

DENNIS LOVELAND

Publications 12; Student Council 11,12, treasurer 12; basketball 10; football 9,10,11,12; track 10,11.

ROSE LOWERY

Vocal music 12; dramatics 11; RGAA 11,12; Pep Club 11,12; library 11.

SHIRLEY MALICOAT

Publications 12; vocal music 9,10; Pep Club 10,11,12.

JUDITH MAPSON

Library 11; office girl 12.

MADLINE MARFIELD

Office girl 12; transferred from Center 11.



JUDITH MAPSON



MADLINE MARFIELD



JOHN MARKUS

JOHN MARKUS

Vocal music 9, 10; football 10; class officer 9; Student Council 10.



GARY MARTIN

GARY MARTIN

MARY JANE MAY

Publications 12; RGAA 10, 11; dramatics 12; Pep Club 10, 11, 12; junior play 12.

DARLEEN MISNER

DENNIS MORGAN

Band 9, 10, 11; Art Club 12.

REBECCA MOUSE

Vocal music 11, 12.

THOMAS MOSLEY

Student Council 12; "R" Club 11, 12; Class officer 12; football 9, 10, 11, 12; basketball 9, 10, 11, 12.

DONNA MORRIS

Publications 12; dramatics 11; RGAA 9, 11, 12; Pep Club 12; Art Club 12; vocal music 9, 10.



MARY JANE MAY



DARLEEN MISNER



DENNIS MORGAN



REBECCA MOUSE



THOMAS MOSLEY



DONNA MORRIS

JAMES McCONNELL

Vocal music 9,10; Honor Society 10,11,12; Student Council 10; Ruskin School District 12 years.

LYNN McCREADY

Publications 12; vocal music 9; library 9.

MARSHA NEELY

Publications 12, vocal music 10; dramatics 11; 1st. vice-president 11; RGAA 11,12; pep club 11,12, vice-president 12; Art Club 12; junior play 11.

ELAINE McDANIEL

Class officer 9,10; dramatics 11; RGAA 9,10,11,12; Pep Club 9,11,12; cheerleader 12; office girl 11,12.

CHARLES NORMAN

Dramatics 10,11,12, 2nd. vice-president 11, president 12; junior play 11.

ROBERT OLIVER

Boys State 11; track 11,12.

MARY PARISH

Band 10,11,12; vocal music 9,10,12; dramatics 11; F. H. A. 11,12; RGAA 9,10,11,12; Pep Club 9,10.

KENNETH PERRY

Vocal music 9,10,12; class officer 12; "R" club 11,12; basketball 9,10,11,12; football 9,10,11,12; track 9,10,11,12.



JAMES McCONNELL



LYNN McCREADY



MARSHA NEELY



ELAINE McDANIEL



CHARLES NORMAN



ROBERT OLIVER



MARY PARISH



KENNETH PERRY



BETTY PETRIE



EMILY PHILLIPS



WESLEY PIERSON



PAM PHINNY



CYNTHIA PRICE



JERRY RAEDER



JANET RHYMER



DONNA ROSS

BETTY PETRIE
Vocal music 11, 12; RGAA 10, 11.

EMILY PHILLIPS
Transferred from Paseo High School 12; F. H. A. 12; RGAA 12; Art Club 12.

WESLEY PIERSON
Junior play 11.

PAM PHINNY

CYNTHIA PRICE
Dramatics 10, 11; RGAA 9, 10.

JERRY RAEDER
Vocal music 9, 10; All State Chorus 9.

JANET RHYMER
Office girl 12.

DONNA ROSS
RGAA 12; library 12.



JOHN SCHINZE



LINDA RINGO



BARBARA ROBERTS



HAROLD RICE



BETTY SCHMIDT



NANCY SCHMOLL

JOHN SCHINZE
Debate 12.

LINDA RINGO
Transferred from Parsons Junior College 12.

BARBARA ROBERTS
RGAA 12.

HAROLD RICE
Honor Society 11, 12.

BETTY SCHMIDT
Dramatics 11, 12; RGAA 10, 11, 12; office girls 12.

NANCY FIELDS SCHMOLL
Dramatics 10, 11.

PATRICIA SCHROER
Publications 12; dramatics 10, 11; F. H. A. 11, 12; RGAA
9, 10, 11, 12; library 10, 11; junior play 11.

GENE SILVEY



PATRICIA SCHROER



GENE SILVEY



FRANK SMITH

FRANK SMITH

MARILEE STRAND

JO NELL SMITH

JUDITH SMITH
Vocal music 9.

LEONARD SMITH
Band 9, 10, 11; vocal music 12.

DON STEPHENS
Vocal music 9, 12.

KENNETH TAYLOR
Band 9, 10; vocal music 10, 11, 12; Honor Society 10, 11, 12.

BRUCE TERRELL
Band 9, 10, 11; dramatics 10, 11, 12; football 9; track 9.



MARILEE STRAND



JO NELL SMITH



JUDITH SMITH



LEONARD SMITH



DON STEPHENS



KENNETH TAYLOR



BRUCE TERRELL

LOREN TIPPIE
Band 9, 10, 11.

DENNIS TOOMBS
Band 9, 10.

JANIS TOOMBS
Transferred from Brownsville, Texas 11; RGAA 12; li-
brary 12.

JACK VIVIAN
Dramatics 11; "R" Club 11, 12, vice-president 12; basket-
ball 9, 10, 11, 12; football 9, 10, 11, 12; track 9, 10, 11, 12.

JUDY VAHLE
Pep Club 9; vocal music 9, 12; dramatics 10, 12; class off-
icer 11; junior play 11; office girl 11; RGAA 9, 10, 11, 12;
publications 12.

SAM WALKER
Band 9, 10; football 9, 10.

SALLY VERBURG
Band 9, 10; vocal music 10, 11, 12; RGAA 9, 10; Pep Club
9, 10; Honor Society 10, 11, 12, Ruskin School District 12
years.

BARRY WHITE
Vocal music 9, 10; basketball 9, 10, 11, 12; football 9;
track 9; Homecoming escort 11.



LOREN TIPPIE



DENNIS TOOMBS



JANIS TOOMBS



JACK VIVIAN



JUDY VAHLE



SAM WALKER



SALLY VERBURG



BARRY WHITE



ROBERT WHITE



ROBERT WITTMAN



WILLIAM WOODARD



KENNETH WILSON



BERNICE ZACCAGNINI



SANDRA YANCY



ROY YORK

ROBERT WHITE

ROBERT WITTMAN

Publications 12; dramatics 10, 11, 12

WILLIAM WOODARD

KENNETH WILSON

Transferred from Broad Ripple High School 11; Art Club 12; Homecoming escort 12.

BERNICE ZACCAGNINI

RGAA 10; Honor Society 10, 11, 12; Student Council, secretary 10; office girl 12; library 11.

SANDRA YANCY

Vocal music 11.

ROY YORK

Junior play 11.

NOT PICTURED

LUCILLE IRION

JAMES PERRY

NANCY SWAYNE



ROW ONE: C. Arbuckle, R. Arnett, R. Armstrong, G. Badger, J. Barnes, B. Bartley, P. Bartley, S. Bates.
 ROW TWO: J. Bayless, M. Baetie, G. Bell, S. Biven, N. Bixler, B. Bowman, C. Brenner, G. Breshears.
 ROW THREE: R. Brisco, P. Brizendine, S. Brown, R. Broyles, C. Bunch, M. Burchett, J. Burr, C. Butterworth.

ROW ONE: A. Cacioppo, M. Callicotte, D. Calvin, L. Cameron. ROW TWO: S. Campbell, R. Carr, M. Casady, G. Ceule. ROW THREE: K. Cocayne, D. Coffman, L. Collins, B. Colvin. ROW FOUR: J. Cooper, M. Cowdrick, F. Cox. ROW FIVE: M. Damsgard, D. Davis, L. De Ment. ROW SIX: A. Dick, B. Dickenson, P. Dotson.



ROW ONE: J. Ceule, L. Chalmers, E. Cline, H. Clark. ROW TWO: D. Compton, D. Conklin, C. Cook, L. Cook. ROW THREE: V. Crawford, A. Cross, R. Culver, J. Dakan.

PRESIDENT



T. Mockobey

VICE-PRESIDENT



E. Wiberg

SECRETARY



S. Perdue

TREASURER



A. Cockrum

Class of 1961

ROW ONE: W. Eager, D. Edmondson, R. Elliott, C. Ellis. ROW TWO: D. Flora, R. Florà, P. Fordyce, W. Franks. ROW THREE: T. Francis, S. Freed, H. Freeman, K. Freeman. ROW FOUR: S. Garrett, G. Gered, S. Gile. ROW FIVE: S. Granger, T. Graves, C. Gruen. ROW SIX: J. Harlow, C. Harris, M. Harrison.



ROW ONE: C. Downs, R. Draper, G. Durtschi, W. Eads. ROW TWO: K. Elving, S. Fayard, S. Finks, F. Fletcher.



ROW ONE: L. Frounfelter, F. Fullerton, C. Gaines, R. Garner. ROW TWO: B. Glasscock, G. Godsey, V. Goforth, N. Goodman. ROW THREE: S. Greer, J. Grissom, J. Guerrero, N. Hammond.



ROW ONE: P. Hesley, J. Hobson, M. Hollingshead. ROW TWO: C. Hudson, D. Hughes, S. Hunt. ROW THREE: B. Ireland, P. Ireland, J. Irvin. ROW FOUR: E. Jeffers, M. Jensen, K. Keeton. ROW FIVE: D. Knapp, T. Kopf, R. Kostecka. ROW SIX: J. Larabee, R. LaVelle, B. Laws.



ROW ONE: J. Lindsey, K. Lochert, J. Long, K. Lynn, T. Majors, B. Menaugh. ROW TWO: G. Michener, W. Middaugh, C. Miller, V. Miller, V. Moon, D. Moore.



ROW ONE: T. Harrison, B. Hart, J. Hart, B. Haupt, L. Hemme. ROW TWO: S. Honeycutt, T. Hopkins, M. Horn, B. Hudson.

ROW ONE: C. Iverson, W. Jackson, E. Jacoby. ROW TWO: D. Keith, E. Kinney, R. Kneale. ROW THREE: J. Krueger, S. Lamar. ROW FOUR: J. Ledbetter, W. Lillygren.





ROW ONE: B. Morris, L. Mozingo, D. Mullies, C. McCoskey, J. McCready, J. McNally. ROW TWO: J. McQuerry, C. MacMillan, H. Nagel, J. Neal, K. Newman, C. Nichols.



ROW ONE: C. Nichols, E. Nuckolls. ROW TWO: W. Oehler, W. Onasch. ROW THREE: B. Parsons, B. Parsons, J. Paull. ROW FOUR: C. Perry, E. Perry, S. Petty.



ROW ONE: M. Raymond, L. Rhodes, J. Rogers, L. Rose. ROW TWO: R. Russell, T. Scott, J. Sevier, S. Shanks, P. Simpson.



ROW ONE: G. Obendorfer, R. O'Dell, R. Oehler, B. Parks. ROW TWO: F. Owings, B. Pahler, B. Parks. ROW THREE: G. Payne, J. Pence, P. Pennington. ROW FOUR: C. Pierce, J. Pierce, E. Pratt. ROW FIVE: R. Pryor, B. Rafael, L. Raupp. ROW SIX: S. Rountree, M. Rowe, D. Russell.



ROW ONE: M. Singer, S. Sloan, N. Smith, R. Smith, S. Smith, E. Steen, R. Stevenson. ROW TWO: S. Stillwagon, P. Stubbs, R. Stubbs, S. Swisher, D. Tanzy, J. Thomas.



ROW ONE: K. Tull, D. Urion, M. Val-lier. ROW TWO: F. Wachter, B. Walker, R. Ward. ROW THREE: B. Wilson, R. Wilson, T. Wiemer. ROW FOUR: J. Williams, L. Willis, R. Wiseman. ROW FIVE: J. Cipolla, S. Cooper, D. Craig.



ROW ONE: K. Tierney, B. Toone. ROW TWO: S. Van Liew, L. Warden. ROW THREE: W. Weddington, S. Weddle.



ROW ONE: J. Wolfskill, P. Yamashiro, S. Young, K. Campbell. ROW TWO: J. Dunn, A. M. Dick, N. Kennell, B. Parson.

NOT PICTURED
C. Hankins
G. Silvey

PRESIDENT



Vernon Tanner

VICE-PRESIDENT



Sandra Chesnut

SECRETARY



Marilyn Frounfelter

TREASURER



Jody Vance

Class of 1962

ROW ONE: S. Abney, S. Adams, K. Albright. ROW TWO: B. Baldwin, J. Ballard, L. Barnes, M. Bates. ROW THREE: R. Blevins, M. Bollinger, R. Boatwright.



ROW ONE: B. Anderson, A. Anschutz, G. Atkinson, S. Badger. ROW TWO: D. Bell, D. Berglund, J. Beyer, P. Beyer. ROW THREE: J. Boeck, D. Bowling, S. Braswell, R. Bray. ROW FOUR: V. Bridgewater, M. Briggs, J. Bright, C. Brockmeier. ROW FIVE: J. Butler, T. Cady, R. Calegari, M. Campbell. ROW SIX: C. Cooper, J. Corder, C. Cochran, E. Contreras.



ROW ONE: D. Brown, E. Browning, R. Buck, D. Burgess, T. Burkett. ROW TWO: C. Casey, D. Casey, C. Chabino, D. Charpie, J. Cleveland. ROW THREE: S. Costilow, H. Cornell, B. Cox, C. Craig, J. Crawford.





ROW ONE: J. Criner, R. Dahlquist, L. Davis, S. Debo. ROW TWO: K. Dresol, B. Drinkert, S. Dunbar, S. Dunsworth.



ROW ONE: L. Fisher, P. Flanagan, P. Ford, R. Frakes. ROW TWO: M. Gibson, A. Gipson, J. Glasscock, L. Gliem.



D. Demetreus



ROW ONE: R. DeWeese, S. Dotson, T. Dotson. ROW TWO: G. Elliott, J. Elliott, P. Enright. ROW THREE: L. Ewing, B. Figgins, E. Fisher. ROW FOUR: B. Fullerton, V. Gaines, S. Garner, C. Gerken. ROW FIVE: M. Godsey, D. Goodman, B. Greathouse, B. Green.



M. Greene



ROW ONE: S. Grissom, H. Haas, D. Hadlock, D. Hagle, C. Hall, J. Hammer, R. Hammer. ROW TWO: H. Hancock, M. Hardman, J. Hart, S. Hart, D. Haupt, R. Hemby, M. Henry. ROW THREE: R. Herbert, S. Herman, T. Hicks, B. Higgins, C. Hillje, P. Hobson, M. Holder.



G. Hombuckle



ROW ONE: M. Hothan, B. Hott, L. Howard, H. Hurt. ROW TWO: J. Jennings, C. Jewell, M. Johnson, R. Justice.



C. Lewis

ROW ONE: S. Lajzer, W. Lang, H. Langston, J. Laws. ROW TWO: L. Lombardi, C. McCune, F. McDonald, S. Majors.

ROW ONE: B. Hombs, G. Hooten, V. Hopper. ROW TWO: D. Isaacson, R. Jacobs, H. Jefferson. ROW THREE: S. Kearny, R. Kennedy, J. Kettler. ROW FOUR: C. Keys, S. Kirke, P. Kitch, M. Klesath. ROW FIVE: L. Lear, N. Lee, S. Lemm.



ROW ONE: F. Mansfield, R. Marlowe, T. Mathes, S. Medley, D. Miller, J. Miller, K. Miller. ROW TWO: G. Mitchell, K. Mitchell, P. Moffitt, J. Monteleone, M. Morgan, J. Morris, R. Mort. ROW THREE: C. Nash, T. Newport, L. Nichols, J. Nielson, J. Orick, S. Parks, R. Paul.



ROW ONE: E. Pence, C. Pierce, R. Perkins, J. Peterman. ROW TWO: V. Quigg, S. Radford, E. Rainey, H. Rainey.

P. Pinkepank



ROW ONE: G. Poindexter, S. Porter, L. Prater. ROW TWO: L. Ray, S. Reece, J. Reed. ROW THREE: K. Reed, B. Reuder, T. Reynolds. ROW FOUR: D. Rouse, J. Runions, P. Sadler. ROW FIVE: C. Scroggins, G. Selle, J. Sexton.



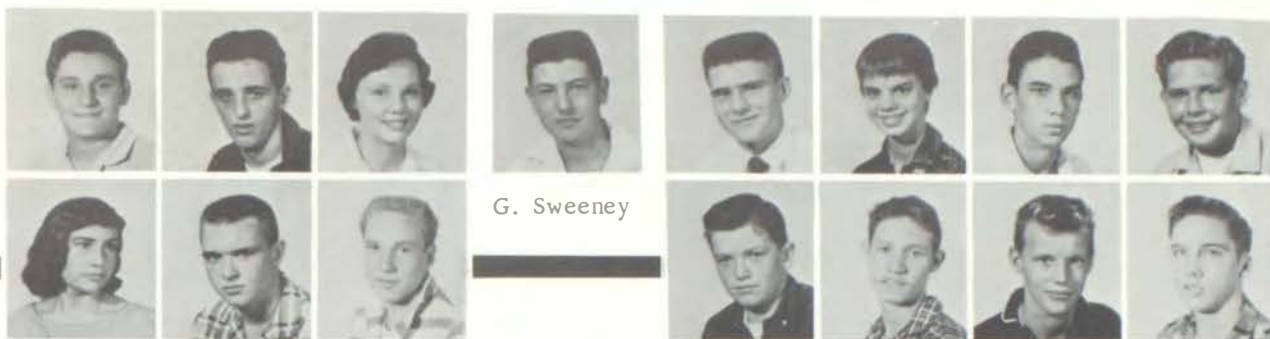
ROW ONE: L. Roberts, I. Robinson, J. Robinson, J. Roché, M. Rountree. ROW TWO: S. Sapp, R. Schuch, M. Schultz, B. Schumann, T. Scott.

L. Shanks



ROW ONE: L. Sharp, J. Shelton, S. Sikirica, L. Sims, D. Sivright, B. Sledge, P. Small. ROW TWO: G. Smith, G. Smith, J. Smith, R. Smith, T. Smith, G. Snyder, M. Speicher. ROW THREE: J. Stephens, L. Stillwell, H. Stockton, C. Stoneking, J. Stowe, B. Sturgill, P. Strawn.





G. Sweeney

ROW ONE: E. Taylor, N. Taylor, R. Taylor, T. Taylor. ROW TWO: G. Tucker, J. Ulery, J. Vaught, P. Vigo.



ROW ONE: D. Sudduth, J. Surber, M. Swanson. ROW TWO: L. Tomlinson, R. Tomlinson, C. Trospier. ROW THREE: J. Vollmer, L. Wallace, T. Walsh. ROW FOUR: B. Ward, A. Warren, D. Warren, L. Watkins. ROW FIVE: L. Wheat, K. White, W. Whitney, L. Whitsitt.



P. Williams



M. Wilson

ROW ONE: V. Weddle, T. Welborn, L. Wesner, L. West. ROW TWO: C. Williams, D. Williams, J. Williams, J. Williams.

ROW ONE: S. Witt, P. Wolf, D. Woodard, M. Woodrome, L. Woody, E. Worth, D. Wright. ROW TWO: C. Yarbrough, J. York, C. Zook, J. Zumwalt, M. Beadel, J. Billman, J. Caponetto. ROW THREE: E. Clark, N. Collier, J. Cox, L. Pratt, D. Rohorit, T. Sanders, B. Shorthose.





ROW ONE: J. Ackerman, C. Adkinson, P. Albin, J. Allen, S. Anderson. ROW TWO: S. Bagby, C. Bailey, J. Banta, T. Barnes, S. Barnes. ROW THREE: L. Beach, M. Blackburn, K. Blackford, J. Blagg, J. Boeck. ROW FOUR: S. Boyse, P. Buchanan, J. Burwell, C. Buttner, B. Byington.



ROW ONE: G. Andrus, R. Armstrong, M. Austin. ROW TWO: S. Barnes, P. Bartling, P. Bartos. ROW THREE: B. Boltz, J. Bowe. ROW FOUR: V. Caldron, K. Calvin, D. Caruthers.



ROW ONE: S. Christopherson, S. Cerrone, C. Close, B. Combs, J. Cooper, P. Cooper, E. Cordsen, C. Cowdrick, K. Cowee. ROW TWO: W. Cowen, P. Coxie, C. Crawford, L. Crawford, P. Creek, J. Cross, J. Darrah, D. Davenport.

ROW ONE: C. Daugherty, G. Davis, B. Dayoub, R. DeMent, J. Dick, K. Dillenger, H. Dunsworth, J. Dyer. ROW TWO: D. Edwards, D. Elliott, J. Elliott, C. Elving, H. Emanuel, R. Emmons, J. Engle, V. Engle. ROW THREE: J. Falcone, A. Falke, M. Fall, S. Farkas, G. Faulkner, R. Faulkner, R. Faulkner, P. Ferina.



PRESIDENT



David Dunn

VICE-PRESIDENT



Steve Timmons

SECRETARY



Judy Hurst

TREASURER



Anita Morris

Class of 1963



ROW ONE: R. Finch, B. Fitzhugh, E. Flatters. ROW TWO: B. Foster, E. Francis, J. Franklin, L. Freeman, C. Fromholde, S. Galler, G. Gant, D. Gary, B. Gash. ROW THREE: M. Gerken, E. Gibbons, L. Gibbson, B. Goforth, D. Goings, L. Goodwin.



ROW ONE: C. Graham, M. Grissom, S. Grissom, J. Grossley, D. Hagle, M. Hamilton, J. Hammer, G. Hammond. ROW TWO: G. Hammontree, T. Hammontree, H. Haning, R. Hansen, C. Hardman, D. Harrison, C. Hart, R. Heady. ROW THREE: C. Hedger, R. Hedrick, B. Hemme, C. Hickman, J. Hille, D. Holdeman, C. Hosey, R. Hothan.





ROW ONE: L. Howard, L. Hudnall, B. Hummel, D. Hummel, J. Hurelbring. ROW TWO: L. Ireland, M. Ireland, L. Jackman, P. Jacobs, G. Jennings, R. Jensen, D. Johnson.



ROW ONE: J. Johnson, J. Jones, S. Jones, M. Julian. ROW TWO: R. Katherman, B. Kelley, M. Kelly, N. Kelly.



ROW ONE: K. Kemp, K. Kemper, B. Kernodle, E. Kihn, H. Kihn, B. Kildow, A. King, C. King. ROW TWO: C. Klassy, C. Klug, J. Knapp, J. Knitter. ROW THREE: S. Kopptiz, D. Kostaska, J. Lanford, S. Lang.



ROW ONE: S. Lawhon, L. Lawson, C. Ledbetter, E. Ledbetter, L. Lightfoot, L. Lillygren, N. Lines. ROW TWO: L. Loveland, R. Lower, D. Lutjen, R. Mahn.





ROW ONE: S. Mais, B. Major, J. Magee, L. Markus, R. Martin. ROW TWO: J. May, G. Menaugh, G. Mercet, C. Merchant, C. Meyers, S. Michael, J. Miller.



ROW ONE: R. Miller, J. Moberly, J. Mockobey, T. Moore. ROW TWO: D. Morgan, A. Morris, B. Morris, J. Morris.



ROW ONE: L. Morrison, P. Moulden, W. McCune, M. McDaniel, C. McGuire, M. Neal, M. Neff, L. Nes-pica. ROW TWO: P. O'Bryan, H. Oldham, J. Osborn, D. Patterson. ROW THREE: K. Patterson, H. Peek, J. Perry, W. Perry.



ROW ONE: W. Peterson, J. Petrie, B. Pickett, J. Pierson, M. Prater, F. Pruitt, S. Pryor. ROW TWO: L. Railey, C. Reece, J. Rhodes, R. Richards, C. Roberts.



ROW ONE: L. Roberts, L. Robinson, H. Rookstool, P. Rose, B. Ross, S. Ross.
 ROW TWO: M. Rowland, B. Royle, M. Runions, C. Sadler, V. Schroer, B. Scois.



ROW ONE: E. Searing, C. Sellers, L. Sellmyer, M. Sessa.



ROW TWO: L. Shanks, V. Sharpe, B. Shaw, J. Shepard.



ROW ONE: M. Skaggs, J. Sledge, J. Slocum, C. Smith, L. Smith, G. Smith, B. Snider,



D. Sparks. ROW TWO: S. Sproul, B. Standifer, B. Steele, J. Steele.
 ROW THREE: W. Stevens, J. Stewart, J. Stubbs, S. Stuerke.



ROW ONE: B. Sturgill, D. Sturgill, B. Taylor, D. Taylor, R. Taylor, C. Test.
 ROW TWO: L. Theobald, E. Thomson, R. Tierney, K. Tucker, H. Tyman, J. Tyvall.





ROW ONE: J. Valenti, C. Van Gordon, P. Van Gordon, J. Vernon, W. Voigt, M. Vogler. ROW TWO: R. Vunovich, S. Walker, C. Waller, H. Waller, B. Wallace.



NOT PICTURED: L. Harrington, J. Irion, C. Mayhugh, S. Selby, L. Tirksdale, L. Wilcox.



ROW ONE: C. Watson, L. Weddle, N. Warren, J. Wester. ROW TWO: R. Wetmore, G. White, M. Williams, D. Wilson.



ROW ONE: L. Wilson, D. Winfield, S. Wolfe, P. Wolff, C. Wooldridge, P. Woolsey, C. Worth,



R. Worth. ROW TWO: D. Wright, J. Wright, S. Yancey, B. Young. ROW THREE: L. Zion, W. Zumwalt, D. Becklean, L. Boujoir.



ROW ONE: H. Brinson, S. Filo, E. Goble, D. Hill, G. Keller, G. Kline. ROW TWO: S. Licata, S. Nickoll, G. Sperry, J. Selby, B. Taylor.



Late Enrollees



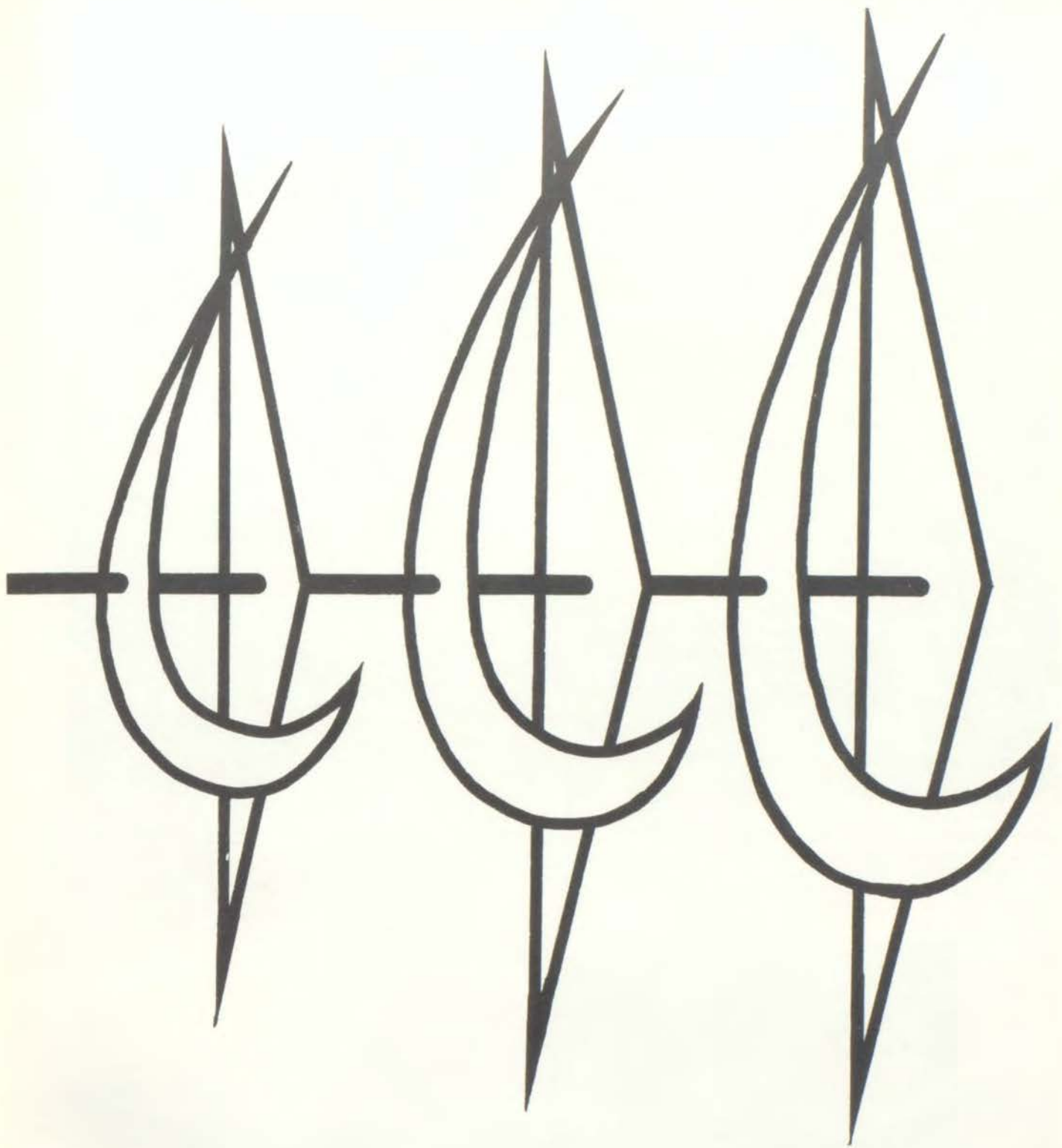
ROW ONE: Leona Fiksdal, Sue Silvey, Lynn Sparks, Sandra Walker, Mary Carter, Lucille Irion, Judy Irion.
ROW TWO: Brenda Williams, Steve Costilow, Ronnie Welch, James Perry, James Cox, Edward Clark.



Hall scene

The students at Ruskin are happy to see new faces. Not too long ago we were new to this district too. We welcome the new students.

This page sponsored by
HOME KILLED MEAT MARKET



Organizations

Student Council of



MARJORIE LANGFORD
Sponsor



BLAINE STECK
Sponsor



WILLIAM MATTHEWS
Sponsor

In October, the Student Council sponsored the yearly magazine sale campaign which provided nearly \$1100 for the council treasury. This money was used to start a fund for a scoreboard for the football field, provide a school banner to lead the Golden Eagle Band in the Rose Bowl Parade, add to the landscaping around the building, purchase a permanent crown for homecoming queens and corsages for their attendants, and buy some additional mirrors for the school building.

Active in many affairs at Ruskin, the Student Council has chartered two new clubs, cooperated with the North Central Association Evaluation Committee, sponsored a United Funds Drive, and worked together with RA-TAP and homeroom representatives in May, 1959, to draft a student code for Ruskin.



Ruskin's Student Council has participated this year in many activities on national, state, and local levels.

Last summer, Ron Goodwin spent a week at Camp Cheley in Estes Park, Colorado, with other council representatives from all over the United States.

The council was vice-president of the Missouri Association of Student Councils. All of Ruskin's representatives attended the annual state convention in March at Jefferson City, and Ron presided over the election session.

Several council members went to a state workshop at Columbia during part of last summer.

Ruskin was also elected president of the local district. A district meeting was held at Lee's Summit in November for discussion of problems and new ideas. Next year as president, Ruskin will be host to this group.



Ruskin High School



ROW ONE: Pat Cline, secretary; Larry Chalmers, vice-president; Ron Goodwin, president; Dennis Loveland, treasurer. ROW TWO: Larry Lawson, Lana Lightfoot, Sharon Garner, Becky Hombs, Cheryl Fromhold, Carnie Littlefield, Mrs. Marjorie Langford, sponsor; Mr. Blaine Steck, sponsor. ROW THREE: Mr. William Matthews, sponsor; David Dunn, Tom Mockobey, Harold Nagel, Tom Mosley, Max Singer, Dave Sivright, Vernon Tanner.



PAT CLINE
Secretary



RONALD GOODWIN
President



LARRY CHALMERS
Vice-President



DENNIS LOVELAND
Treasurer

Sponsored by the STUDENT COUNCIL

Quill and Scroll




ROW ONE: D. Anderson, P. Cline, M. Neely, C. Adams, L. Abernathy, B. Langston, J. Vahle. ROW TWO: L. Hermann, D. Morris, L. Gerred, P. Schroer, M. May, M. Brenton, C. Littlefield.

National Honor Society



ROW ONE: M. Cogbill, J. Fiscus, P. Cline, M. Banta, P. Langston, C. Littlefield, L. Chalmers, L. Gerred, B. Zaccagnini, S. Beach, H. Rice, L. Abernathy, S. Verburg, K. Taylor. ROW TWO: S. Sloan, M. Burtchett, N. Smith, D. Conklin, M. Brenton, L. Beeson, W. Bliss, J. McConnell, J. Thomas, V. Miller, S. Granger, S. Perdue, G. Gerred. ROW THREE: M. Horn, C. Hudson, R. Armstrong, J. Bayless, B. Ireland, M. Beatie, K. Elving, P. Yamashiro, M. Cowdrick, C. Bunch, G. Godsey, R. Arnett, R. Draper. ROW FOUR: P. Pinkepank, J. Laws, D. Sivright, D. Isaacson, B. Hombs, C. Brockmeir, J. Ballard, M. Speicher, P. Moffitt, L. Whitsitt, A. Warren, L. Stillwell, E. Wiberg. NOT PICTURED: C. Belcher, S. Braswell.

Quill and Scroll



International Honorary Society for High School Journalists

Quill and Scroll, the international honorary society for high school journalists, was organized April 10, 1926, by a group of high school advisers for the purpose of rewarding and encouraging individual achievement in journalism and creative writing.

Mrs. Lois Moore and Mr. Arch Wrisinger are the sponsors of this organization at Ruskin. Those students honored by being nominated for membership are pictured on the opposite page.

SPONSORS

L. Moore, A. Wrisinger



SPONSORS

M. Smith, F. May



National Honor Society

The National Honor Society is a select group of students who show unusual character, scholarship, leadership, and service. These qualifications are represented by the letters C S L S on

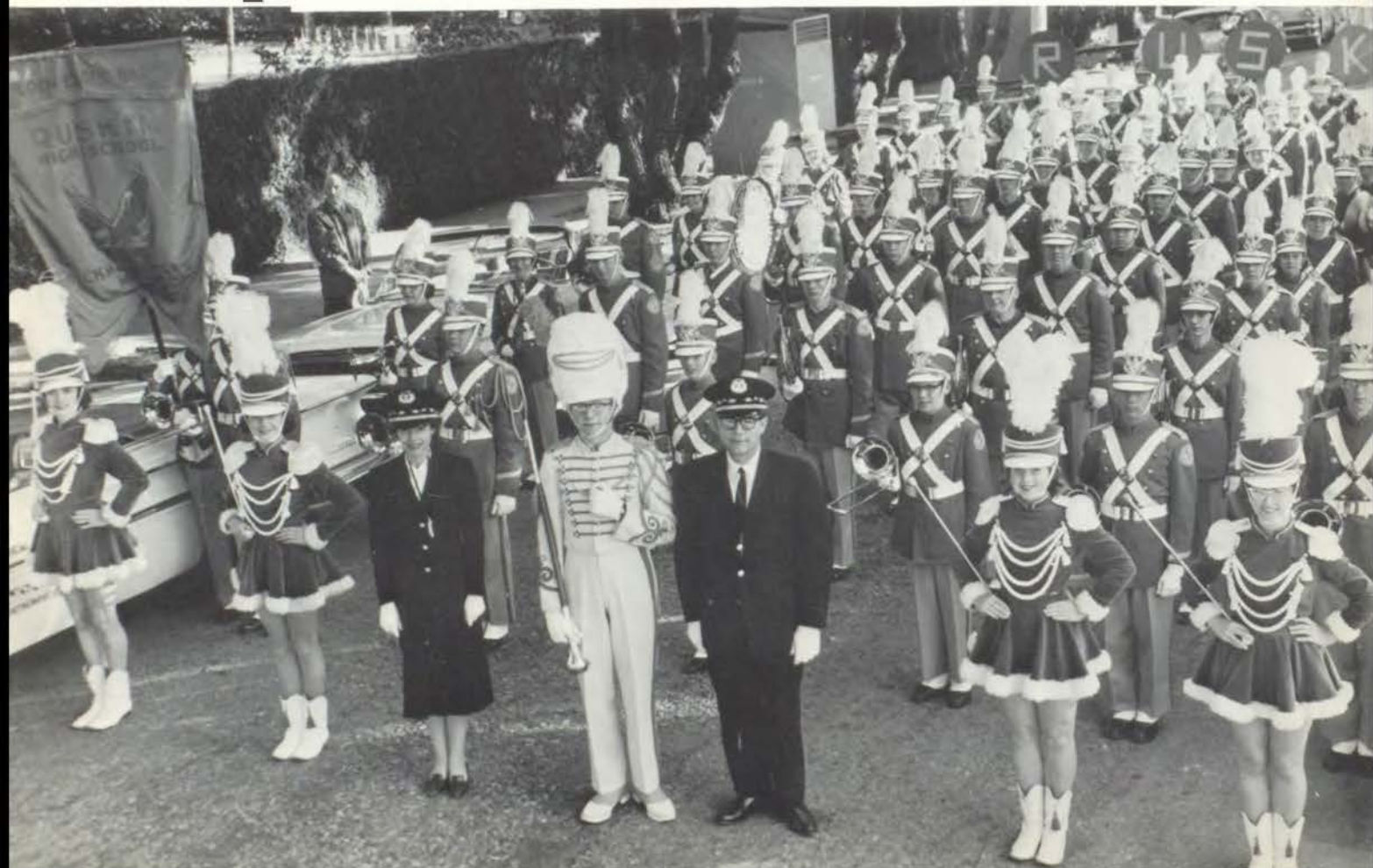
either side of the National Honor Society emblem, a keystone upon which is superimposed a flaming torch.

The Ruskin High School National Honor Society was reactivated in 1957. Only 15 per cent of the seniors, 10 per cent of the juniors, and 5 per cent of the sophomores are selected by a committee of twelve high school staff members.





Ruskin Participates In





Tournament of Roses Parade



Going to Pasadena, California, to participate in the Tournament of Roses parade was considered a great honor by the Ruskin Golden Eagle Band. This marching unit had many wonderful experiences which no member will ever forget. Many places were visited and were enjoyed by everyone who saw them. Highlights of the trip were taking the rides in Disneyland, getting a real taste of Chinese food in Chinatown, visiting a restored ghost town in Knott's Berry Farm, seeing Hollywood and 77 Sunset Strip, watching the favored team, Wisconsin, getting defeated in the Rose Bowl game, and most important of all, getting the chance to march in and be a part of the wonderful Tournament of Roses parade on New Year's Day. For this wonderful trip and many other things which have happened to the Golden Eagle marching band, its members wish to express their appreciation and gratitude to everyone in the community and the state of Missouri for their help and contributions in making a dream come true.

The journalism staff wishes to thank the music department for sponsoring the following four pages.





Ruskin is very proud of its exceptionally fine marching band, the Golden Eagles, and its able directors Mr. and Mrs. K. Seward.



MAJORETTES

M. Parrish, E. Goble, A. Warren
G. Gerred.

BAND OFFICERS

S. Kearney, H. Nagel, L. Whitsitt, W. Lillygren,
T. Mockobey, J. Billman, P. Moffit, J. Irvin, W.
Steen.





DRUM ENSEMBLE
McCune, Peek, Whitsitt, Woody.



DRUM ENSEMBLE
Vollmer, Calvin, Moffitt, Lawhorn.



BRASS SEXTET 1
Nagel, Worden, Stubbs, Steen, Billman, Flora.

Symphonic Band



Brass Ensembles



TRUMPET TRIO

Nagel
Worden
Orrick



TROMBONE
QUARTET
Stevens
Blevins
Mockobey
Steen



BRASS SEXTET 2

Orrick, Luzier, Blevins, Mockobey, Henry,
Cowee.



FRENCH HORN
QUARTET
Stubbs
Blevins
Goings
Shultz



BRASS QUINTET

Hansen, Hart, Blevins, Gash, Kennedy.

MIXED CLARINET QUARTET

J. Irvin S. Grissom
R. Taylor L. Gerred



SAX QUARTET

S. Sproul
C. Durtschi
R. Hedrick
W. Lillygren

CLARINET QUARTET

L. Howard
S. Bates
J. Barnes
S. May



Woodwind Ensembles



FLUTE TRIO

B. Ferguson
B. Hudson
B. Boltz



WOODWIND QUARTET

B. Ferguson
L. Whitsitt
J. Irvin
L. Gerred



MIXED CLARINET QUARTET

D. Wilson A. Warren
P. Wolff D. Isaacson

Junior-Senior Chorus



ROW ONE: Verburg, Gile. ROW TWO: Anderson, Embry, Pennington, Brown. ROW THREE: Kennell, Peterman, Ledbetter, Cowdrick. ROW FOUR: Keith, Pierce, Mouse, Vallier. ROW FIVE: Fullerton, Bayles, Young, Cleveland. ROW SIX: Krueger, Fordyce, Langston, Chesnut. ROW SEVEN: Stillwagon, Perdue, Cox, Petrie. ROW EIGHT: Simpson, Lamar, Lowery, Swisher. ROW NINE: Kopf, Brown, Cook, Allen, Chum, Parish, Brenner, Gerken, Irion, Iverson. ROW TEN: Stephens, Lawson, Smith, Walker, Elliott, Hammond, MacMillan, Davis, Mort, Jefferson. ROW ELEVEN: Taylor, Flowers, Francis, Russell, Jones, Habel, Agee, Godsey, Albright, Perry. ROW TWELVE: Conklin, Vahle, Kistler, Breshears. ROW THIRTEEN: Halliday, Freeman, Dickenson, Ellis. ROW FOURTEEN: Haupt, Frounfelter, Butterworth, Cline. ROW FIFTEEN: Laws, Cogbill.

Girls' Glee Club



ROW ONE, LEFT TO RIGHT: Pahler, Krueger, Butler, Pennington, Anderson, Embry, Kopf, Kearney, Verburg. ROW TWO: Hammond, Brockmeier, Ballard, Scroggins, Habel, Cleveland, Sharpe, Chesnut, Brasswell. ROW THREE: Gerred, Whitsitt, Crawford, Enright, Burchett, Bunch, Parish, Vahle, Marlowe, Ford, Perdue. ROW FOUR: Ferguson, Garner, Bates, Dickinson, Butterworth, Frounfelter, Cline, Frounfelter, Shultz, Boltz, Hudson.

Boys' Glee Club



ROW ONE, LEFT TO RIGHT: M. Shultz, T. Smith, J. Wester, L. Davis, B. Fullerton, D. Bell. ROW TWO: W. McCune, E. Worth, D. Sparks, L. Smith, B. Hott, J. Stephens, J. Mockobey. ROW THREE: K. Calvin, R. Schuch, D. Urion, D. Stephens, K. Albright, J. Colgan, W. Bridgewater, D. Davis.

Madrigal Singers



ROW ONE, LEFT TO RIGHT: P. Pennington, J. Butler, M. Shultz, P. Cline, L. Frounfelter, M. Parish, J. Kruegar, T. Kopf, D. Anderson. ROW TWO: E. Worth, L. Davis, L. Smith, D. Urion, K. Taylor, K. Albright, D. Sparks, C. Littlefield, D. Bell.

Underclass



ROW ONE: White, Kearney, Bridgewater, Caldron, Ireland, Ballard, Hillje, Woolsey, Irion. ROW TWO: Stuerke, Adkinson, Herman, Hart, Adams, Wheat, McCune, York, Langston, Keys, Pence, Hobson, Petrie, Miller, Bright. ROW THREE: Scroggins, Sturgill, Pierson, Railey, Boltz, Cooper, Stubbs, Snyder, Hille, Collier, Butler, Weddle, Ford, Hass, Loveland. ROW FOUR: Carder, Ward, Dick, Bates, Watkins, Sledge, Cowee, Galler, Morgan, Grahm, Wester, Rose, Lightfoot. ROW FIVE: Sparks, Henry, Poindexter, Pierce, Nielsen, Welborn, Corder, Moore, Wilks, Blagg, Surber, Glasscock, Mockobey.



ROW ONE: Langford, Wolff, Lang, Lear, Bollinger, Montelone, Smith, Smith. ROW TWO: Snyder, Patterson, Radford, Kitch, Boldwin, Speicher, Cooper, Burgess, Filo, Caligari, Sikirica, Majors. ROW THREE: Sharp, West, Williams, Francis, Paterson, Armstrong, Miller, Lee, Cooper, Cox, Prier, O'Bryan, Ross. ROW FOUR: McCune, Wolfe, Hammond, Stewart, Jewell, Dunsworth, Rookstool, Bates, Small, Sparks, Crawford, Anderson, Combs, Ledbetter. ROW FIVE: Worth, Davenport, Jefferson, Castilow, Sperry, Steele, Selle, Haupt, Cox, Stephens, Hott, Davis, Fullerton.

This and following page sponsored by VOCAL MUSIC DEPARTMENT

Choruses



ROW ONE: Elliot, Klassy, Blackford, Smith, Scott, Miller, Craig, Parks, Bell. ROW TWO: Johnson, Nash, Hart, Mayes, Elliot, Figgins, Franklin, Medly, Sessa, Porter, Hickman, Badger, Peek, Calvin. ROW THREE: Holmes, Volmer, Demetreus, Brockmier, Yancy, Pratt, Higgins, Frounfelter, Garner, Edwards, Abney, Swanson, McDonald, Shelton, Keys. ROW FOUR: Perry, Ireland, Clark, Marfield, Holderman, Morris, Briggs, Billman, Mort, Surber, Herdick, Hadlock, Renkapouk, Richards, Grissom.



ROW ONE: Faulkner, Butley, Kemper, Cordsen, Cerrone, Holder, Hemming, Lemm, Stillwell, Gaines, May, Kelly, Harrington. ROW TWO: Warren, Vance, Williams, Marlow, Godsey, Morris, Scott, Wilson, Grissom, Anschutz, Wright, Flatters. ROW THREE: Chesnut, Enright, Phareena, Gibson, Taylor, Engle, Schultz, Whitt, Gibbons, Patterson, Woodrome, Morris, Berglund, Drinkert. ROW FOUR: Killer, Cox, Kernodle, Taylor, Goodwin, Majors, Shuch, Harchman, Green, Perry, Rowland, Beyers, Nespica, Smith, Hemby.

Lively RG



ROW ONE: Hombs, Langston, secretaries; Cleveland, president; Simpson, vice-president; Embry, treasurer; Mrs. Wochner, sponsor. ROW ONE: Woolwridge, Langston, Butler, Vallier, Wilson, Moffitt, Stewart, Goforth. ROW THREE: Bagby, Smith, Weddle, Bartley, Jacoby, Rose, Hurst, Neal, Hickman, Barnes, Smith, Elliott, Ireland, Loveland, Cordsen, Caldrow, Wilson, Radford, Wright, Dillenbeck, Beatie, Weddington, Granger, Sloan, Kelly. ROW FIVE: O'Brien, Bixler, Dayoub, Snider, Hille, Boltz, Banta, Sadler, Hamilton, Smith, Conklin, Burchett, Walker, Marlow, Francis, Woolsey.



ROW ONE: Gerred, Forsythe, Stevens, Pierce, Peterman, Warren, Figgins, Nash, Braswell, Hardman, Isaacson, Scott. ROW TWO: Schorer, Phillips, Kitch, Holder, Franklin, Porter, Sessa, Mahan, Wallace, Moon, Hart, Twymann. ROW THREE: Berglund, Abney, Vogler, Sharp, Hammond, Ferina, Morris, Ross, Chunn, Schmidt, Cross, Coxe, Greene, Spiecer. ROW FOUR: Jennings, Sadler, Kirke, Ellis, Neely, Hermann, Morris, Blevins, Habel, Michaels, Shelton, Roberts, Creek.

Sponsored by RGAA

AA Members



ROW ONE: Petty, Elliott, Ross, Gerkin, Johnson, Gile, Gerken, Menaugh, Smith, Sturke, Petrie, Knapp, Hosey, Fromhold, White. ROW TWO: Cambell, Walker, Stillwell, Anchutz, Gliem, Sikarica, Tomlinson, Abernathy, Langston, McDaniel, Lowery, Brown, Ireland. ROW THREE: Vance, Baldwin, Enright, Scroggins, Goforth, Swisher, Medly, Keys, Ledbetter, Ledbetter, Bayless, Nichols. ROW FOUR: Kistler, Vahle, Chesnut, Agee, Belcher, Brenton, Cline, Pratt, Small, Frounfelter, Garner, Whitsitt, Chesnut.



ROW ONE: Kemper, Dillenger, Kruger, Farkus, King, Goble, Lightfoot, Hammer, Grissom, Calegari, Badger, Hicks, Fullerton. ROW TWO: MacMillian, Michner, Allen, Bunch, Damsgard, Gerred, Russell, Parish, Pennington, Lamar, Perdue, Stillwagon, Arbuckle, Brown. ROW THREE: York, Adams, Cooper, Ford, Morris, Blackford, Butterworth, Jewell, Roberts, Rose, West, Freed, Jacobs.

Sponsored by MARK RICHARD'S DRESS SHOP, Ruskin Heights

Ruskin



S. Dunsworth, K. Campbell, M. Campbell, M. Cogbill, B. Menaugh, S. Sikirica, S. Brown, N. Smith, M. Burchett, M. Beatie, V. Moon, P. Ireland, S. Biven, M. Cowdrick, M. May, S. Blunk, S. Swisher, G. Michner, M. Damsgard.

Cabinet



L. Gerred, treasurer; M. Cogbill, secretary; C. Kline, president; M. Neely, vice-president; G. Gerred, junior checker; S. Garner, sophomore checker; C. Belcher, senior checker.



C. Belcher, R. Lowery, S. terworth, S. Chesnut, M. Adams, B. Walker, L. Frounfelter, J. Dillenbeck, Stillwell, B. Holmes, J.

This page sponsored by
JACK CRAIG MOTORS
13400 South 71 Highway

Pep Club



SUE TRAVIS
Sponsor



rown, D. Embry, C. But-
aymond, K. Demetrius, S.
heat, F. McDonald, M.
. Garner, K. Baker, L.
ork.



Gerred, Malicoat, Morris, Cleveland, Garrett,
Blevins, Bayless, Brenton, Langston, Higgins,
Kline, Hillje, Gerred, Neely, Cline, Agee,
Chesnut, Kistler, Frounfelter.

This page sponsored by
PEP CLUB

Onward Eagles!



THE BOSS!



Hard at work lifting school spirits are this year's cheerleaders. They are Elaine McDaniel, Sue Sloan, Wanda Weddington, Leona Beeson, Ginnie Goforth, and Sharon Granger.



R Club



SEATED: Mosley, secretary; Banta, president; Vivian, vice-president; Perry, treasurer. ROW ONE: Hornbuckle, Gile, Casady, Elliott, Loveland, Johnson, Steen, Coach Bodenhamer. ROW TWO: Lawson, Colvin, Arnett, Eager, Flora, Russell, Coach Dowell. ROW THREE: Coach Hamann, Flett, Chalmers, Laws, Wieberg, Flanagan, Goodwin.

The R Club is an honorary organization open only to those boys who have won a Ruskin letter for their achievement in athletics. This is Ruskin's oldest organization.

Every year the R Club adopts a project to help the school and its athletic program. The current year's project was carried out with the purchase of an 8mm movie camera. This worthwhile addition to the school's athletic equipment was first used the evening of December 18, at the basketball game with Park Hill.

An annual dance is sponsored by these boys. The dance for 1960 was held on February 19.

Ruskin Thespian Players



SEATED: C. Nichols, Treasurer; C. Norman, President; L. Hermann, Vice-President. ROW ONE: C. Hillje, E. Jacoby, Secretary; S. Petty, M. May, B. Byington, S. Grissom, L. Sharp, J. Kruger, S. Medley, C. Keys, N. Lee. ROW TWO: Miss J. Scott, Sponsor; C. Durtschi, C. Cook, P. Moffitt, C. Allen, D. Eyman, L. Pratt, V. Miller, L. Wallace, J. McQuerry. ROW THREE: K. Freeman, R. LaVelle, L. West, K. Baker, P. Dotson, C. Adams, K. Keeton, J. Vollmer, B. Schmidt, J. Vahle. ROW FOUR: B. Williamson, T. Smith, J. Hart, M. Horn, L. Wesner, W. Franks, B. Bartley, J. Grissom, E. Taylor.

The Ruskin Thespian Players is organized for students who have had a year of speech in school. The object of this organization is for the students to get a better interest and appreciation for the theatre and its related fields. During the past year they have had special guests, produced plays, and had an annual banquet.



Thespian Activities



ROW ONE: Mrs. Thelma Read, Sponsor; M. Speicher, Treasurer; S. Garner, Secretary; L. Flett, Vice-President; J. Harlow, President; Mrs. Betty Hutson, Sponsor. ROW TWO: E. Phillips, J. Ballard, C. Brockmeier, J. Cooper, S. Gile, A. Cross, L. Lakey, B. Pahler. ROW THREE: K. Garrett, P. Simpson, C. Keys, J. Chunn, P. Hornbuckle, D. Eyman, R. Johnson. ROW FOUR: M. Neely, L. Hermann, D. Morris, M. Brenton, C. Ellis, M. Halliday, D. Ross.

Pass the paint

Project... Window



Art Club

Ruskin is proud of its newly formed Art Club. When the charter was drawn this year, there were 23 members. At the end of the first semester, the club opened its membership to those who had completed at least one semester of art in high school. Among other interesting places, the club visited the Walt Disney Exhibit about Animation. One of their projects was designing and decoration of the front window for Christmas.

This page sponsored by MORRIS & COLDSNOW ASSOCIATION
3415 Main Street, Kansas City, Missouri

Future Homemakers of America



SEATED: Chesnut, Fullerton, Langston, Burtchett, Belcher, Breshears, Dillenbeck, Smith, Parish. ROW ONE: Miss Stilley, Cowdrick Faulkner, Cook, Smith, Gerken, Iverson, Pierce, Mais, Kopf. ROW TWO: Hemmings, Sterke, Gerken, Ireland, Chesnut, Bunch, Hickman, Langston, Blevins, Mrs. Maples. ROW THREE: Petrie, Elliott, Swisher, Bayless, Harrison, Willis, Wilson, Cross, Phillips. ROW FOUR: Schroer, Briscoe, Kline, Bixler, Brenton, Beach, Crawford, Jones, Crawford.

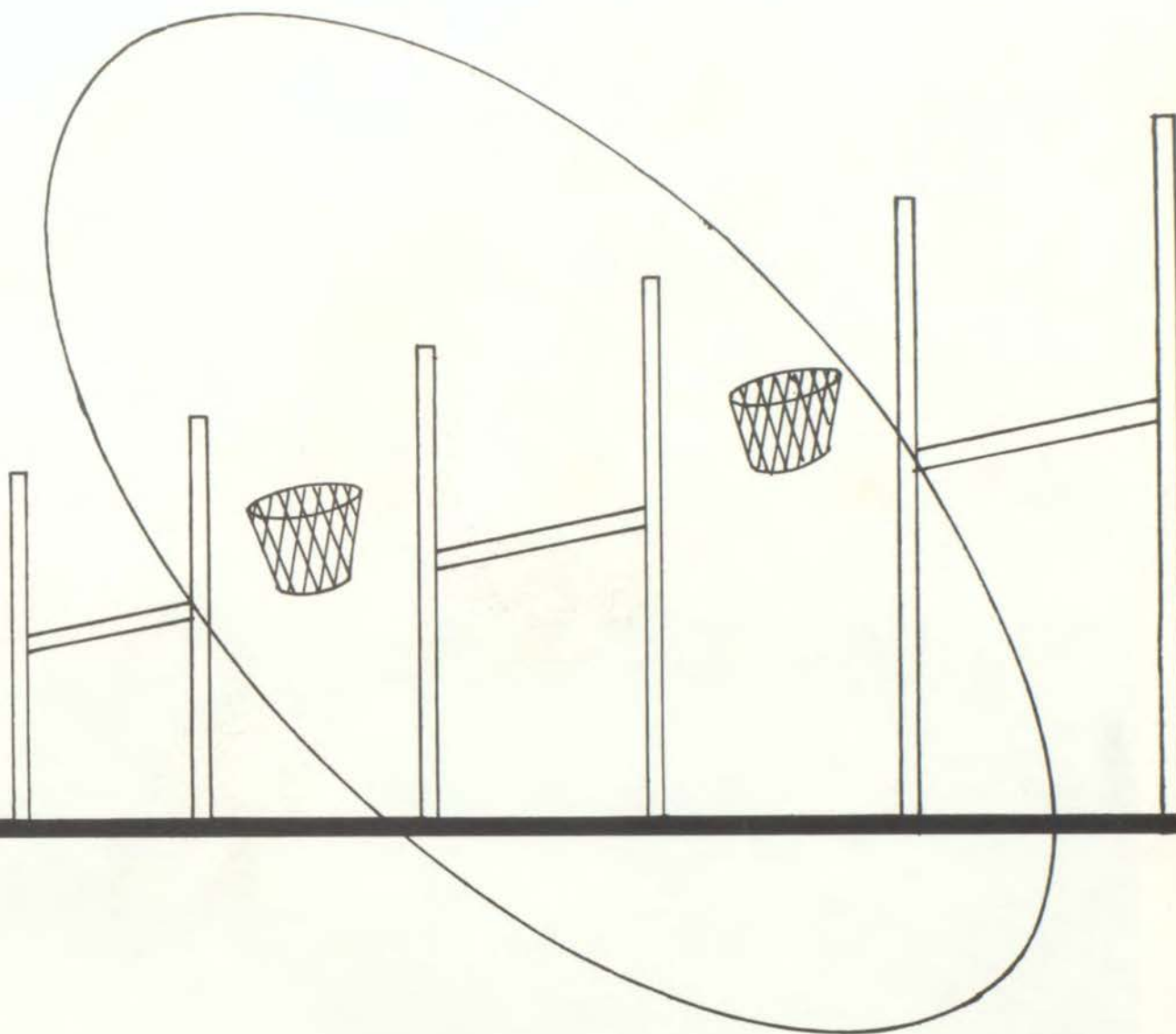


Pleasant memories!



We also work!

This page sponsored by the F.H.A.



Athletics



HERB HAMANN
Head Coach

FOOTBALL SCHEDULE
1959-60

Richmond	0	12	Ruskin
* Liberty	6	14	Ruskin
* Fort Osage	7	14	Ruskin
* Blue Springs	6	14	Ruskin
* Lee's Summit	6	26	Ruskin
* Center	12	26	Ruskin
* Park Hill	14	13	Ruskin
* Grandview	7	0	Ruskin
Wm. Chrisman	7	13	Ruskin

* Denotes Conference Games



JIM BODENHAMER
Assistant Coach

SECOND PLACE
Won 7

KANSAS CITY SUBURBAN CONFERENCE
Lost 2



Ruskin Eagle Football Team

ROW ONE: Loveland, Banta, Johnson, Hornbuckle, Vivian, Gile, Goodwin, Perry, Mosley. ROW TWO: Arnett, Russell, Flora, Casady, Chalmers, Flanagan, Rountree, Eager, Wieberg. ROW THREE: Tanner, Harris, Kinney, Welborn, Hemby, Howard, Nielson, Pierce, Neal, Corder, Hesley. ROW FOUR: Haupt, Sivright, Sanders, Wiseman, Collins, Schuman, Herbert, Watkins, Welch, Laws, Cleveland, Briggs. ROW FIVE: Morris, Martin, Sledge, Buchanan, Yarbrough, Chabino, Pinkepank, Fisher, Royce, Dunn, Holdeman. ROW SIX: Wetmore, Parry, Emanuel, Jones, Hammontree, Runions, Dunsworth, Dyer, McDaniel, Steele. ROW SEVEN: Coach Hamann, Wesley, Stevenson, Falcone, Hummel, Miller, Grasley, Neff, Taylor, Flora, Coach Bodenhamer.



The Eagles pile 'em up.

**E
A
G
L
E
S**

We did it again-second place

'59



Block that kick!



Sweeping End.

'60



Ed Weiburg
Junior End



Tom Mosley **
Senior End



Ken Perry **
Senior Back

19

“R”



Pat Flanagan
Junior End



Ron Goodwin **
Senior Back



Dennis Gile *
Senior Guard



Mickey Banta
Senior Back



Ron Arnett
Junior Back



Ron Russell
Junior Guard



* Denotes 1st. Team All-Conference
** Denotes 2nd. Team All-Conference

60

MEN



Bill Eager
Junior Back



Larry Chalmers *
Junior Tackle



Jack Vivian ***
Senior Back



Dennis Loveland
Senior End



Don Flora *
Junior Center



Bob Hornbuckle
Senior End



Rus Johnson
Senior Guard



Marshall Rountree
Junior Guard



Mike Casady
Junior Tackle



*** Denotes Honorable Mention All-Conference



RON GOODWIN
Senior Forward



TOM MOSLEY
Senior Guard



BUD LAWSON
Senior Guard



LARRY FLETT
Senior Forward

Eagle Basketball 1959-60





BILL LAWS
Junior Forward



KENNY PERRY
Senior Forward



JACK VIVIAN
Senior Forward



BARRY WHITE
Senior Guard



COACH DOWELL
Head Coach

Won 13

BASKETBALL SCHEDULE

Grandview Tourney

Harrisonville	43	Eagles	51
Parkhill	54		43
Center	53		54

Regular Games

Warrensburg	47		56
Wm. Chrisman	66		50
Parkhill	47	*	58
Lee's Summit	73	*	41
Ft. Osage	65	*	87
Blue Springs	42	*	64
Liberty	50	*	61
Center	34	*	54
Grandview	42	*	47
Parkhill	54	*	58
Lee's Summit	57	*	56
Ft. Osage	48	*	71
Blue Springs	46	*	60
Liberty	66	*	62
Center	46	*	58



COACH HAMANN
Assistant Coach

Lost 5

Kansas City Suburban Conference

Schedule listed to February 25, 1960 * Denotes conference games

Sponsored by PRESIDENT SHOP TRUMAN CORNERS So 1-3234



GARY GODSEY
Junior Guard



ED WIBERG
Junior Center

"B" Team

ROW ONE

R. Draper

J. Laws

ROW TWO

S. Costilow

D. Rehovit

J. Mitchell

E. Wiberg

D. Haupt



ROW THREE

C. Pierce

J. Corder

J. Kettler

T. Mockobey

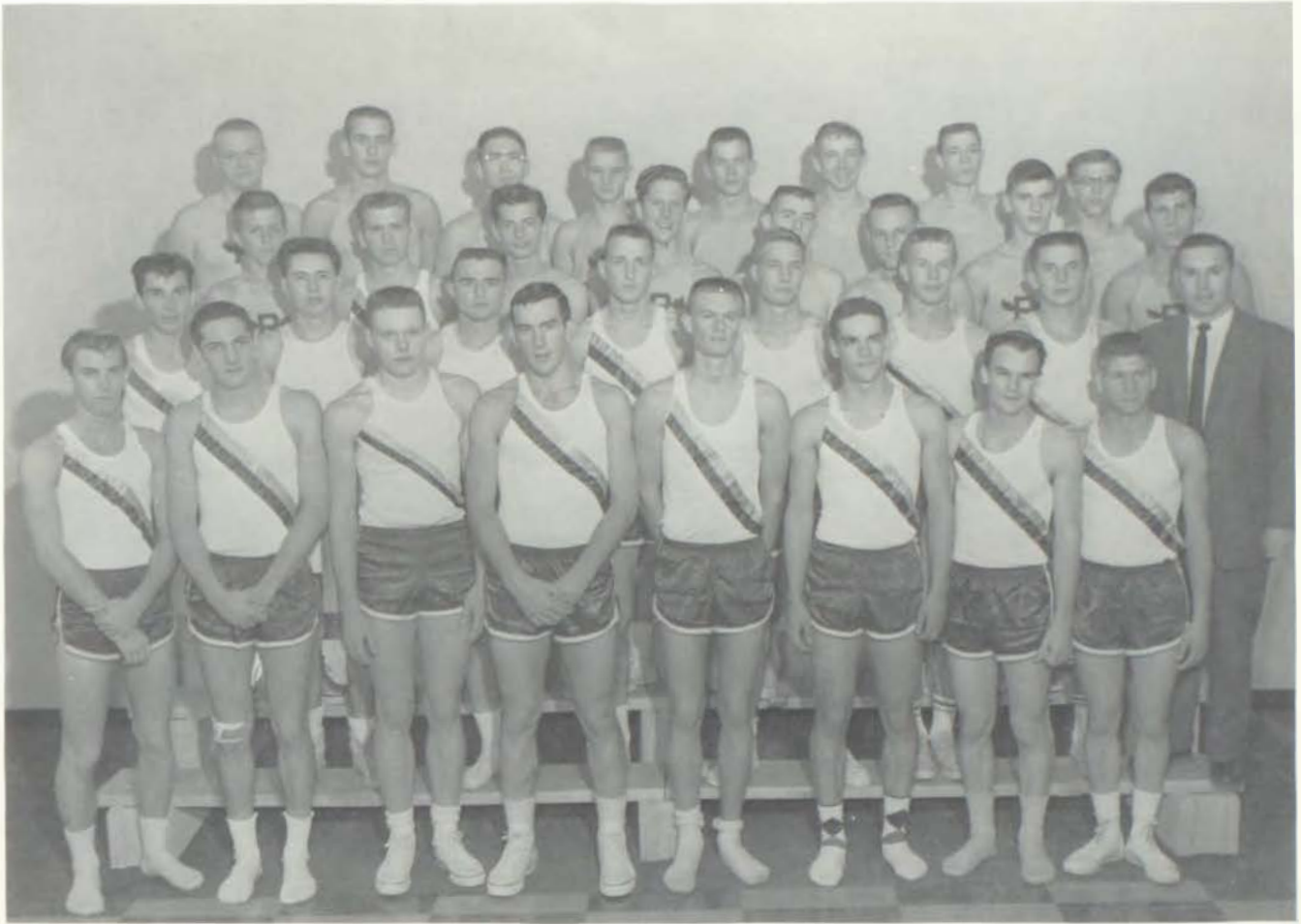
G. Godsey

Freshman Team



ROW ONE: L. Perry, R. Wetmore, H. Dunsworth, H. Brenson, F. Pruitt, L. Lawson, S. Timmons, M. McDaniel, B. Steele. ROW TWO: D. Holdeman, P. Buchanan, G. Kline, J. Davis, L. Davis, L. Nespica, E. Thompson, C. Worth, L. Zion, R. Morris.

Ruskin's Track Squad



ROW ONE: R. Arnett, K. Perry, E. Wiberg, R. Goodwin, B. Laws, M. Banta, R. Elliott, W. Steen. ROW TWO: M. Hennessy, B. Bridgewater, D. Gile, J. Vivian, R. Oliver, B. Hornbuckle, D. Loveland, J. Bodenhamer, Coach. ROW THREE: J. Runions, T. Francis, J. Dakan, B. Eads, V. Tanner, B. Eager, C. Yarborough, M. Singer. ROW FOUR: C. McCoskey, L. Chalmers, R. Russell, R. Wiseman, D. Haupt, G. Mitchell, J. Laws, T. Mathes.

Schedule of Meets for 1960

March 26	Class A state outdoor meet at Columbia
March 30	Lee's Summit--here
April 14	Blue Springs--here
April 19	Liberty--here
April 22	William Jewell Relays at Liberty
April 29	Grandview--there
May 3	Clinton Relays at Clinton
May 6	Center--there
May 10	Conference Tract Meet at William Jewell
May 14	Class A district meet at East
May 20-21	Class A state outdoor meet at Columbia

Returning varsity lettermen to the 1960 track team are Ron Arnett, Ken Perry, Ed Wiberg, Ron Goodwin, Bill Laws, Mickey Banta, Ron Elliott, and Warren Steen.

Unusual Sports



Inspired school spirit!

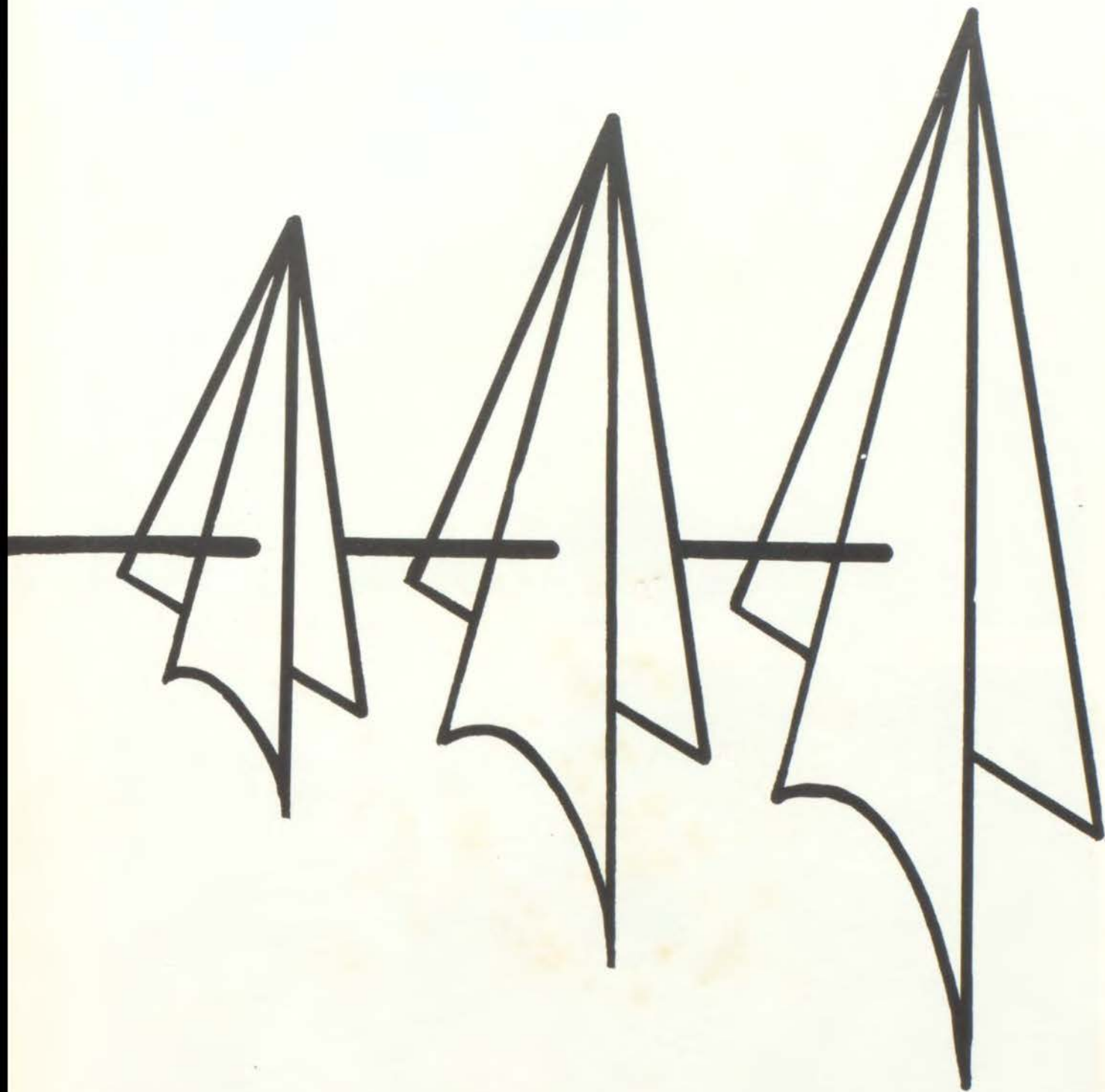
Simon says stand up!



Wider! Wider!! Wider!!!

Absence makes the heart grow fonder?





Activities



Ruskin Eagles were victorious over the Center Yellowjackets 26 to 6.



QUEEN AND HER ATTENDANTS, ROW ONE, LEFT TO RIGHT: Senior Princess Pat Langston, Queen Pat Cline, Senior Princess Karen Garrett. ROW TWO: Junior Attendant Sharon Purdue, Sophomore Attendant Sharon Garner, Freshman Attendant Janet Langford.

Sponsored by
LYONS DRUGS
Drive-In Window Prescriptions

1959 HOMECOMING

Amidst old memories of alumni and new experiences for the present student body, the 1959 Ruskin High School Homecoming was celebrated.

The theme of the dance "Football Magic," helped to spin a mysterious web of magic as the couples danced around the floor.

Sponsored by
BURTON'S JEWELRY
Truman Corners



Pat Cline, 1959 Homecoming Queen



1959 Ruskin Homecoming Dance



ROW ONE: B. Langston, P. Schroer, M. May P. Cline, C. Littlefield, L. Gerred, J. Vahle. ROW TWO: L. Abernathy, S. Brown, C. Allen R. Blevins, M. Neely, S. Blunk, D. Anderson, A. Habel, L. McCready, L. Hermann, D. Morris, S. Malicoat. ROW THREE: D. Loveland, B. Lawson, B. Wittman, K. Frisby, M. Brenton, C. Adams, Mrs. Lois Moore, Sponsor; Mr. Arch Wrisinger, Sponsor.

Hi-Light



CARNIE LITTLEFIELD
Editor-in-Chief



PAT CLINE
Assistant Editor



MR. ARCH WRISINGER
Sponsor



MRS. LOIS MOORE
Sponsor



BARBARA LANGSTON
Assistant Editor



LINDA ABERNATHY
Editor-in-Chief

Mirage



ROW ONE: L. Gerred, P. Cline, C. Littlefield, L. Abernathy, B. Langston, J. Vahle, M. May. ROW TWO: L. Hermann, D. Morris, D. Anderson, P. Schroer, S. Blunk, L. McCready, R. Blevins, M. Brenton. ROW THREE: D. Loveland, B. Lawson, C. Allen, S. Brown, C. Adams, M. Neely, B. Wittman, K. Frisby. NOT PICTURED: S. Malicoat.



Like, make with the pep, kiddies.



Never a bride....



The Whistler

1959

Eagle

- September 9-Freshmen--New Students
- 10-Freshmen--New Students
- 11-Pep Rally
- 23-Student Council
- 30-Eddie Motter
- October 16-Pep Rally
- November 2-Melody Masters
- 23-Fred Lowery
- December 2-Liquid Air
- 18-Pep Rally
- 23-Christmas Assembly
- January 27-Senior Assembly

Sponsored by CLOVERSET FARM, 105th and Wornall Road, WI 2-3424

1960



What is this thing called pep?

Assemblies



Straight from the moon.

- February 12-National Honor Society
- 17-Junior Assembly
- 19-Pep Rally
- 24-Jimmy Davis
- March 4-Vocal Music
- 8-Ken Strictfoden
- 25-Band Assembly
- April 1-O. G. Fitzgerald
- 6-Sophomore Assembly
- 14-Easter Assembly
- 27-Freshman Assembly
- May 4-Faculty Assembly
- 11-Speech--Arts
- 20-Awards Assembly



Ronda and her daddy.

Sponsored by J. L. ROBERTS NURSERY, 104th & 71 Highway, South 1-5665

MOST POPULAR
P. Cline & R. Goodwin



BEST ATHLETES
E. McDaniel & K. Perry



BEST STUDENTS
B. Zaccagnini & C. Littlefield



SWEETEST GIRL & NICEST BOY
L. McCready & M. Banta

Who's

CLASS FLIRT & CASANOVA
M. Parish & B. Duncan





PRETTIEST & MOST HANDSOME
K. Garrett & R. Oliver



DONE MOST FOR RUSKIN
C. Kline & D. Loveland



BEST ALL AROUND
B. Langston & L. Flett



MOST LIKELY TO SUCCEED
S. Verburg & J. McConnell



COMEDIAN & COMEDIENNE
M. Caruso & B. Terrell

60

Who



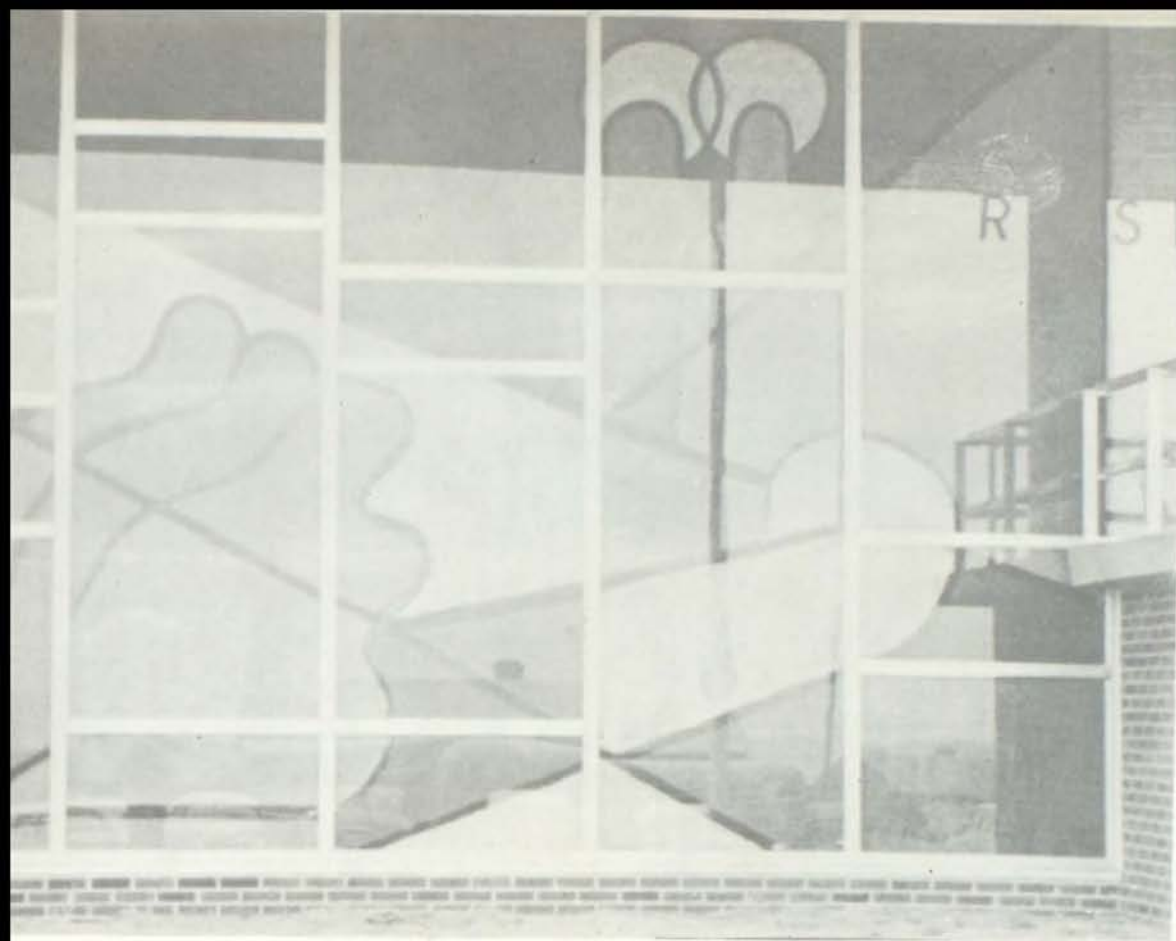
Originality counts!



Talent, technique, time!



Charcoal, chalk, chewing gum!



Christmas Mural

ART WORK



Paper, paint, patience!

Physical Education



Coach Russell Dowell



The favorite activity

This page sponsored
By
DEE'S CLEANERS

Rope Climb



For Boys and Girls



So who's the William Tell?



Don't anyone let go!

Gym Office Girls



Home



This is no reflection on your dryer.

Is all this necessary?



Just how do you plan a meal?

Having completed their first year in home economics these girls have taken a step toward the future. All girls should prepare themselves for jobs as housewives and mothers because this is the field in which most of them eventually settle.

Ruskin offers an excellent four-year course in home economics including sewing, cooking, laundering, and, for those who do (or don't) have the privilege at home, dishwashing.

The home economics classes are under the supervision of Miss Marguerite Stilley and Mrs. Helen Maples.

Economics

There are many jobs to do.



Almost done!

Stand up straight.



This page sponsored by
REIDER'S FOOD CENTER
8744 Blue Ridge
Kansas City 33, Missouri
South 1-0400



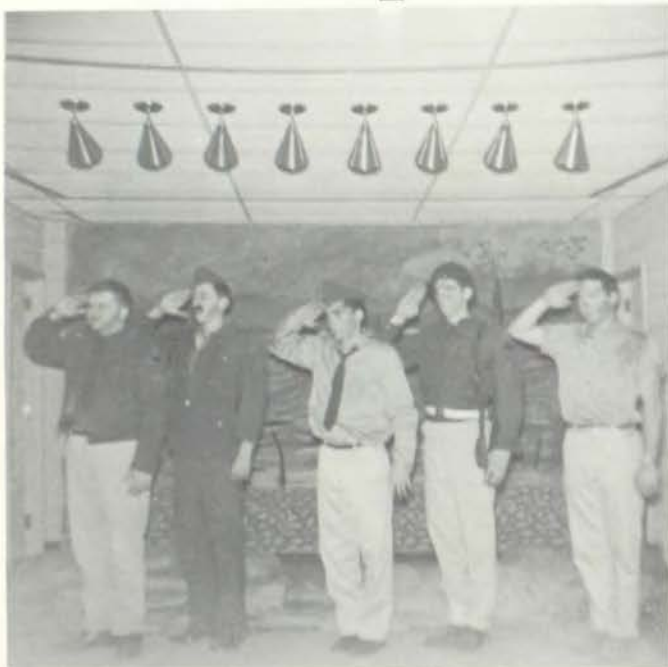
What? Another campaign.

Speech



They're cutting out something.

Here comes
"Old Yellowstain."



Depart

Arts



Sidewalk superintendent.



Bottoms up!



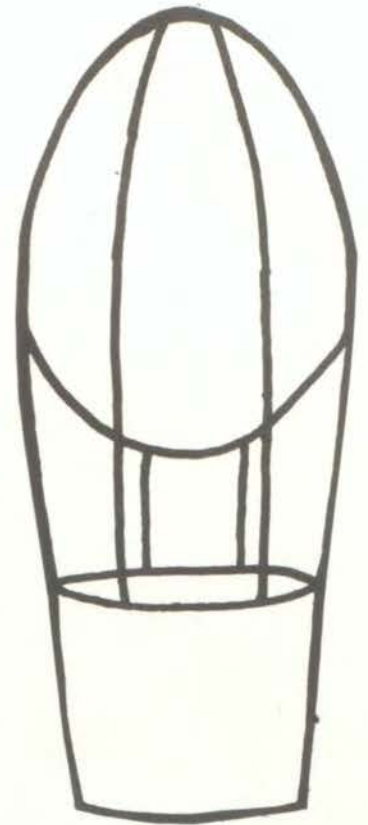
There's gold 'n them thar hills.

ment

AROUND THE WORLD



There is a story.



Fogg made a bet; Passepartout joined the adventure.

CAST

M. Jean Scott, Director
Ellard Taylor
Margaret Burtchett
Gordon Bell
John Sevier
Jerry Pence
David Urion
Virginia Miller
Ginger Moon
Barbara Hudson
J. D. Grissom
Cheryl Bunch
Carol Nichols
Bob Bartley
Sharon Freed
Joyce Krueger
Peggy Dotson



IN EIGHTY DAYS

The 1959 three-act drama, sponsored by the junior class, was presented by the permission of the Dramatic Publishing Company of Chicago.



They went to Spain.



They went to the ballet.



It all came about because the whole cast worked.

CAST
Kathy Lochert
Kay Freeman
Donna Conklin
Carolyn Cook
Saundra Petty
Wesley Franks
Wanda Weddington
Susan Swisher
Shirley Biven
Diane Eyman
Elizabeth Jacobey
Tom Hopkins
Janis Toombs
Marcia Brenton
Mary Callicotte
Lynda Hermann
Claretta Durtachi

Behind Class



To solve a physics problem is quite a problem.

Bookkeeping is a very worthwhile subject at Ruskin.



A good luck wish goes to Mrs. Dowell's Spanish class.

Sponsored by
GRANDVIEW LINOLEUM
Grandview, Missouri

room Doors



English IV - Swords, anyone?

Family Living - We call it concentration.



Shorthand I - Doorstep to a secretarial career.

Chemistry - Watch out,
scientists at work!



Typing I - All right,
everyone, home row.

World history - Just one
big happy family?



Guidance at Ruskin



Mr. Johnston's Staff



Mr. Edd Johnston is serving his fourth year as a Ruskin counselor. His main job is to advise juniors and seniors.

Among the many jobs our counselors have is the annual testing of all the classes to make certain that progress is being made. This is a picture of the seniors taking the Ohio Psychological Test.



Mrs. Langford's Staff



Mrs. Marjorie Langford is Ruskin's new counselor. She takes time with the freshmen and sophomores to explain the do's and don't's.



PRINCIPAL'S OFFICE HELP, SEATED: Mrs. S. Sudduth, secretary; Mrs. B. Phillips, secretary. ROW ONE: C. Kline, C. Gaines, D. Anderson, S. Chestnut, D. Embry, S. Stillwagon, C. Arbuckle. K. Garrett. ROW TWO: S. Sloane, P. Cline, M. Cogbill, M. Brenton, C. Allen.

A Tribute To Those We Appreciate



COUNSELOR'S HELP

Ruskin's Library



STANDING: Jensen, Faulkner, Blunk, Ross, Lakey, Lochert, Tombs, Jones, Hunt, Conklin, Wallace.
SITTING: Johnston, Miss Gaiser, librarian; Miss Cantwell, library clerk.



Our best source of information.



Student's deeply engrossed

Ruskin at Bandstand



Lights!



Camera!



John Bilyeu, M.C., interviewing Karen Keeton and Wes Franks.



Action!



Sponsored by
PEARL MARVIN'S GREENHOUSE
Grandview, Missouri

Looking Back

SEPTEMBER

- 2 SCHOOL BEGINS. Back to textbooks, leaky pens, and forever running out of notebook paper.
- 11 RICHMOND GAME, here. An exciting win
- 18 CLASS ELECTIONS
- 25 FORT OSAGE GAME, here. Another addition for a long list of wins.

OCTOBER

- 2 BLUE SPRINGS GAME, here
- 16 HOMECOMING GAME and DANCE. Pat Cline was a charming queen.
- 20 RUSKIN BAND MARCHES IN THE AMERICAN ROYAL PARADE.
- 30 GRANDVIEW GAME, there. A "ghostly" experience.

NOVEMBER

- 11 GRADE CARDS ISSUED. Something new! They don't have to be returned.
- 15 OPEN HOUSE. The fateful day parents and teachers meet.
- 20 JUNIOR PLAY. "Around the World in 80 Days", was sponsored by the junior class.
- 26 THANKSGIVING HOLIDAY. The beginning of a much needed vacation.

DECEMBER

- 1-5 GRANDVIEW TOURNAMENT. Ruskin took third place.
- 18 BEATNIK PEP ASSEMBLY. "Like, pass the espresso, dad."
- 20 VESPERS SERVICE
- 23 CHRISTMAS ASSEMBLY. A nice combination of the work of the speech and the music departments.
- 24 START OF THE CHRISTMAS VACATION. Finally

JANUARY

- 4 RESUME SCHOOL
- 11 CONFERENCE BAND CLINIC, here.
- 15 CENTER GAME, there. Another win for our side.
- 19 GRANDVIEW GAME, here. A win by one point.
- 27 SENIOR ASSEMBLY. "The Womanless Wedding."
- 29 JUNIORS ORDER CLASS RINGS. Can the senior year be far away?



Looking Back

FEBRUARY

- 1 DENTAL EXAMS. "Look ma, no teeth."
- 2 SENIORS ORDER CAPS AND GOWNS. Can graduation be far away?
- 16 ART CLUB MEMBERS INITIATED. Future Rembrants.
- 19 PEP CLUB ASSEMBLY. Last home game with Center.

MARCH

- 11 SPEECH CLINIC, here. Thespians devote a day to the theater.
- 18 END OF THE THIRD QUARTER. One more to go.
- 23 REPORT CARDS ISSUED AGAIN.

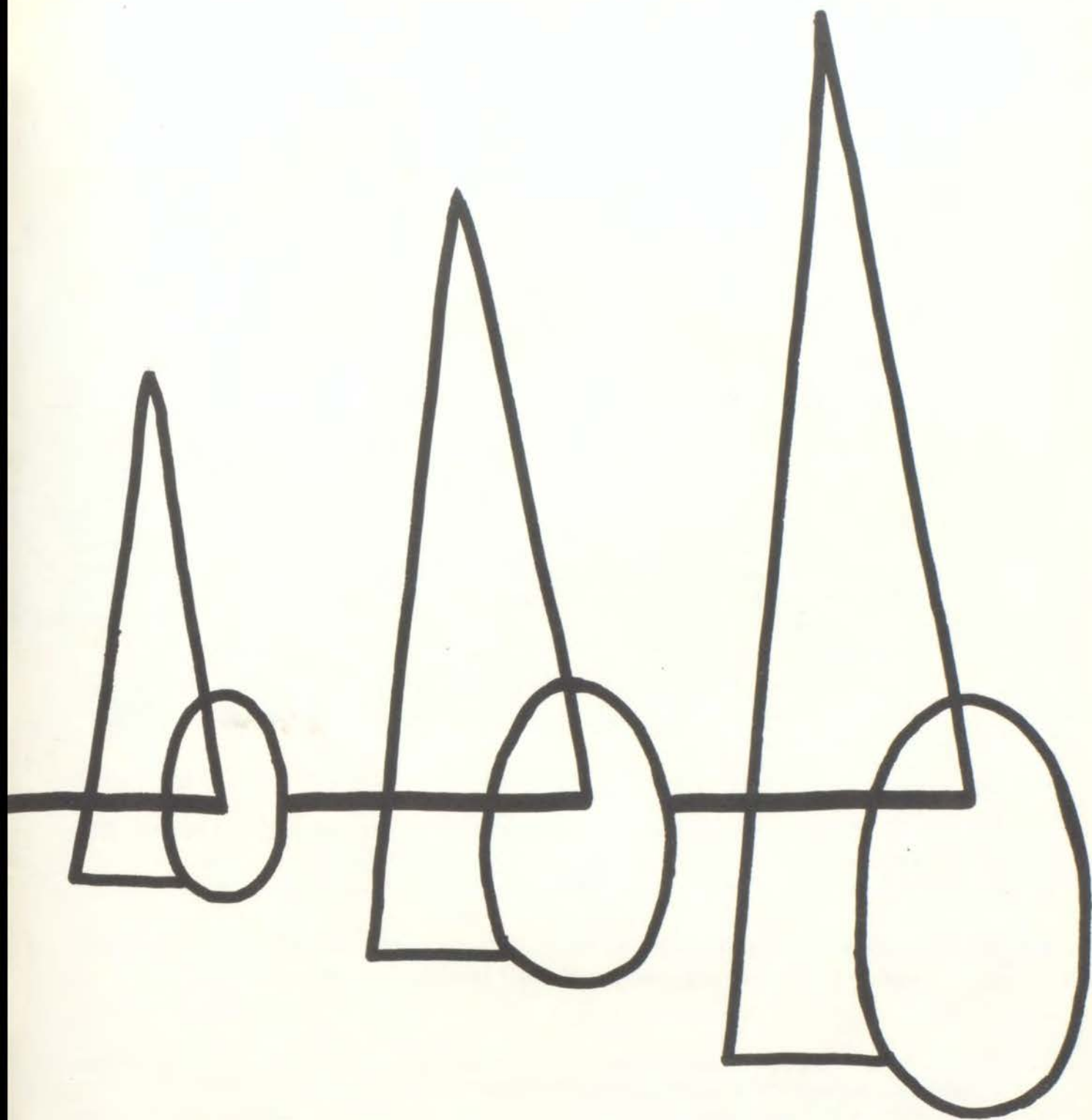
APRIL

- 6 SOPHOMORE ASSEMBLY. A nice relief from class work.
- 12 SENIOR HOBO DAY. "These are the dignified seniors?"
- 15 START OF THE EASTER VACATION. The long awaited time is finally here.
- 27 FRESHMAN ASSEMBLY.

MAY

- 7 JUNIOR-SENIOR PROM. The big formal event of the year.
- 10 CONFERENCE TRACK MEET AT WILLIAM JEWELL.
- 11 SPEECH ASSEMBLY.
- 22 BACCALAUREATE.
- 26 COMMENCEMENT. A time to look back and think ahead.
- 27 FINAL DAY OF SCHOOL. We say good-bye to our friends and secretly wait for September to come.

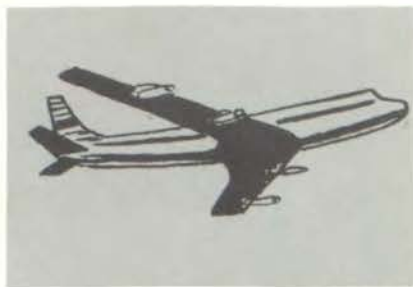




Advertising

Expansion

On the Kansas City
Aviation Horizon



Twin Expansion now underway at HOFFMANN to increase PRODUCTION FACILITIES, as prime contractors for the U. S. ARMY, U. S. NAVY and U. S. AIR FORCE, and as sub-contractors for leading aeronautical firms coast-to-coast, and PERSONNEL TRAINING FACILITIES for the ever-growing, fast changing aviation field.



Highly competent training for beginning and advanced students interested in making a career in Aviation through the Training Division of HOFFMANN AIRCRAFT COMPANY. Primary, training is supplied in the following fields:

AIRLINE PERSONNEL TRAINING Ticketing, Reservation, Stewards and Hostesses, Dispatch, Station Agent, Passenger Agent, Station Manager, Space Control, Flight Training.

JET ENGINE TRAINING Mechanical and engineering, training in Jet, Ram Jet, Turbo-Prop, Gas Turbines, Rockets, Guided Missiles.

ELECTRONIC TRAINING Electronics as applied to specific industry programs—Radio, Television, Automation, Guided Missiles, Rockets.

Those interested in qualifying for training in these specialized fields are invited to write to HOFFMANN AIRCRAFT COMPANY.

HOFFMANN





HOFFMAN AIRCRAFT COMPANY established in 1939, is patent holder of all Patent Rights in the United States, and in practically every foreign nation except Russia, for JET and RAM JET Engines invented, designed and engineered by Key personnel of the organization. Presently, HOFFMANN offers Design, Experimental, Research and Manufacturing facilities for aircraft, airframe or engines, in the commercial, military and private aircraft fields.

FOR FURTHER INFORMATION ADDRESS GEORGE R. HOFFMANN, President,
HOFFMANN AIRCRAFT CO., BOX 27, OVERLAND PARK, KANSAS.

AIRCRAFT CO.





Compliments of

LUKE'S BAKERY

Ruskin Center

VIRGINIA DARE

For those who care
Newest in styles

1108 Main
Kansas City, Missouri
HA 1-6226

TINY'S STUDIO

6609 Bannister Road
Hickman Mills 34, Missouri

One block west of Blue Ridge

SOUTH 1-1291

Weddings-Special Occasions

Compliments of

BROWN JUG

115 and 71 Highway

CREST DRIVE-IN

114 and 71 Highway

SOUTH 1-5435

Home Cooked Meals

Fountain Service

Sporting Goods

Sundries

WI 2-1155

MARY KNOOR

Compliments of

JIM SUMMERS SERVICE

115th & Blue Ridge

SO 1-9092

Congratulations and Best Wishes
To The Senior Class of 1960

CUNNINGHAM'S

Tot & Teen Wear

Ruskin Shopping Center
SO 1-8885

Good luck to the Class of 60

Jackson County Advocate

News - Photos - Features
Commercial Printing

Grandview, Missouri

BROWN & LaPRESTO

SERVICE STATION

110 & 71 Highway
SO 1-9031



TINY'S PORTRAIT STUDIO

6609 Bannister Road
Hickman Mills 34, Missouri

One block west of Blue Ridge

SO 1-1291

Better Pictures!

LOMA VISTA LANES

8756 Blue Ridge
SOUTH 3-3200

Bowl at the Finest!
Bowl at the Sign
of the Magic Triangle!

Compliments of

BEN FRANKLIN

Ruskin Center

Where the Value is
High and Cost Low
Nationally Known -- Locally Owned

COMMUNITY TRUST GAINED THROUGH PERSONAL SATISFACTION

ALLISON

HOME IMPROVEMENT

GENERAL CONTRACTOR

FRANK ALLISON
SOUTH 1-8539

7405 E. 109 Terrace
Kansas City 34, Missouri

SMITH SECRETARIAL SERVICE

10928 S. 71 Hiway

SOUTH 1-0864

COMPLETE LETTER SHOP

DUANE'S SHOE STORE

Quality Shoes

For the Family

Truman Corners SOUTH 1-2922

This Studio Took Our
Football Pictures

TINY'S PORTRAIT STUDIO

6609 Bannister Road
Hickman Mills 34, Missouri
One block west of Blue Ridge

SOUTH 1-1291

Ruskin Hi-Fi and Record Center

Hi-Fi, Records, Cameras, Film, and Developing, Stereos, Radios

Ruskin Heights Shopping Center

Phone SOut 3-0367

TROJAN POWDER CO.

GREENWOOD, MISSOURI

Phone Madison 3-3231

Tiny's Portrait Studio

6609 Bannister Road

Hickman Mills 34, Missouri
One block west of Blue Ridge

SOut 1-1291

Pictures for every occasion

Fruits-Ornamental and Shade Trees
Flowering Shrubs
Evergreens-Uprights-Spreaders

GIBSON GARDENS

South of Ruskin Heights
M. G. Gibson G. Glasscock
SOut 3-2853 Hilland 4-8525
One Mile West of Raytown Road
on 120th Street (Pittinger Road)

Compliments of

HICKMAN GARAGE

11515 71 Highway
SOut 1-6106

Lee Glass Men's & Boy's Wear

RUSKIN HEIGHTS SHOPPING CENTER

11148 BLUE RIDGE

SOut 1-2494

CONGRATULATIONS TO THE LEADERSHIP OF TOMORROW
The future of America rests in the hands of the youth of today.
God bless you.

Franklin C. Kline

National Security Life Insurance Co.

3626 Troost
Kansas City, Missouri

Special Student Savings Plan
Rates from Birth to Age 80

Res. Sp. 1-4931
Office We. 1-9638

Horseback Riding
Old Fashioned Hayrides
Scenic Trails
Call

BENJAMIN'S

SOut 1-5505
87th & Hillcrest Road
Hickman Mills, Missouri

Complete One Stop Service at Wayne's
SO 1-7831

WAYNE'S SINCLAIR SERVICE

11517 & 71 Highway
Hickman Mills, Missouri
Lubrication-Washing-Tire Repair
Wheels Balanced-Road Service
Goodyear Tires-Batteries
Accessories

ROSEHILL GARDENS

E. Asjes

Growers of Fine Evergreens and Shrubs .

9300 Holmes Street

Since 1914

JACKSON 3-2443

PABCO LINOLEUM

CALIFORNIA ORIGINALS

FLORENTINE

SYMPHONY

CONCERT

LYRIC

smartest linoleum in the land.....



TINY'S PORTRAIT STUDIO

Lifetime Mementoes

6609 Bannister Road

South 1-1291

Hickman Mills 34, Missouri
One block west of Blue Ridge

TINY'S PORTRAIT STUDIO

For the Best in professional Photography.

SO 1-1291
6609 Bannister Road

Hickman Mills 34, Missouri
One block west of Blue Ridge

Free Estimates

Phone SO 1-5456

"We move the earth for you."

K. L. PERRY

Basements

Driveways

Parking Lots

Ponds

Fill Dirt

Roads

Basement and Earth Digging

8900 KEMPER ROAD

R. R. NO. 16
KANSAS CITY 38, MISSOURI

RAY WILSON SHOES

Shoes for the entire family.

Ruskin Heights Shopping Center

SO 1-6591

Carl's Service

9914 South 71 Highway

Pennies saved on every tank

Means pennies in your piggy bank.

If you want the best, call.....

TINY'S PORTRAIT STUDIO

6609 Bannister Road
Hickman Mills 34, Missouri

One block west of Blue Ridge

SO 1-1291

Best Wishes

G. P. WOOLDRIDGE REALTY

11141 Orchard - SO 1-2174



Kansas City 34, Missouri

Congratulations to the students
of Ruskin High School.

ALBIN'S

112 and 71 Highway
Hickman Mills, Missouri

Hamburgers Sandwiches
Malts Ice Cream
Soft Drinks

BARLING'S CARPET & RUG CO.

Quality Broadloom at Low Prices

Convenient Terms

8300 Wornall

EMerson 3-1500

Congratulations to the Class of '60

Hydro-Butane Gas Co.

Hickman Mills, Missouri

SO 1-5522

Homer L. Braswell, president

MARKUS SKELLY

77th & Troost

KEN'S BARBER SHOP

Ruskin Shopping Center

6 Barbers--No Waiting

Flat Top--Specialties

Your

DAIRY QUEEN STORE

87th & Blue Ridge

Serving You the Finest

TINY'S PORTRAIT STUDIO

6609 Bannister Road
Hickman Mills 34, Missouri
One block west of Blue Ridge

SOuth 1-1291

Tiny is our Mirage Photographer

WALDO THEATER

75th & Washington

JAckson 3-4584

ARMY NAVY SURPLUS

118th South 71 Highway

SOuth 1-0200

MILLER MATERIAL &
SUPPLY CO.

10768 71 Highway

SOuth 1-7390

WIMPEY'S DRIVE IN

7700 Troost Ave.

King Size Italian Steaks
Burgers - Malts - Shakes
Root Bear - Coke
Tacos

Compliments of
SUPREME LAUNDRY
AND CLEANERS
11114 Blue Ridge Extension
SO 1-3707

HICKMAN MILLS STANDARD
A Complete Line of Tires
Batteries & Accessories
Service Calls
SP 1-9044 Ellis Sudduth

BUNNY'S CARD
AND GIFT SHOP
Red Ridge Shopping Center
Bunny Arbuckle

WALDO GRAIN COMPANY
Seed - Dog Food - Fertilizer
7801 Wornall
EMerson 3-1111

HEN HOUSE SUPER MARKET
8230 Wornall Road
Fresh Dressed Poultry,
Eggs and Quality Meats
Open 7 Days Each Week
8 A.M. to 10 P.M.

Compliments of
HICKMAN MILLS FURNITURE
11523 & 71 Highway
Hickman Mills, Missouri
SO 1-6090

TINY'S PORTRAIT STUDIO
6609 Bannister Road
Hickman Mills 34, Missouri
One block west of Blue Ridge
SO 1-1291

Y-DRIVE-IN
At Truman Corners
Appreciate the Patronage
of the Students of
Ruskin High School



Caprizios

	Pat Simpson
Sandy Brown	Cheryl MacMillan
Caryl Butterworth	Pam Pennington
Laura Frounfelter	Sharon Perdue
Glenda Gerred	Dot Russell
Trudy Kopf	Sandy Stillwagon
Shannon Lamar	Mary Vallier

COMPLIMENTS
OF

CREST FOOD CENTER

116 and 71 Highway and 305 North Scott

Hickman Mills

Belton

Missouri

TINY'S PORTRAIT STUDIO

6609 Bannister Road

One block west of Blue Ridge

Class pictures taken by this studio.

Hickman Mills 34, Missouri

SO 1-1291

Sports Photographer Class of "60"

TINY'S PORTRAIT STUDIO

6609 Bannister Road SO 1-1291

One block west of Blue Ridge
Hickman Mills 34, Missouri

Compliments of

TOWN & COUNTRY FORD

11116 So. 71 HiWay

SO 1-1881

FLAT-TOPS A SPECIALITY

Hickman Mills Barber Shop

5810 E. 110

SO 1-3893

CONGRATULATIONS TO CLASS OF "60"

Ruskin Hardware

11152 BLUE RIDGE SO 1-8335



Elsie says----"Visit our Plant"

3105 Gilham Road

VA 1-3100

Bordens

TINY'S PORTRAIT STUDIO

Faster Service

6609 Bannister Road
SO 1-1291

Hickman Mills 34, Missouri
One block west of Blue Ridge

DR. J. A. RANDALL

Chiropractor

"Health is your most important asset."

9212 East 50 Highway
FL 3-8646

Quality Products

SOuth 3-0303

Courteous Service

Ruskin Skelly Service

111th and Blue Ridge Road
(Across from Ruskin High School)

Skelly Greasemaster Guaranteed Lubrication
Goodyear Tires Budget Terms Available

Free pickup and delivery

Open 6:30 a.m. to 10:00 p.m.

Seven days a week

Wilson's Jewelry

GUARANTEED WATCH REPAIRING

Ruskin Heights Shopping Center

SO 1-2085

BUD OSTERMEYER

Watch Repair

Majors Gift Shop
&
Bunny's Gift Shop

WINDOW DECOR

Truman Corners

SO 3-0590

CORONET BEAUTY SALON
The Finest in Professional Beauty Care
SOUTH 1-1000
8728 Blue Ridge Blvd.
Kansas City 34, Missouri

Compliments

HEALY MASTER CLEANERS
7108 Ditzer
(50th at Gregory Blvd.)

BILL WINSTEADS
DRIVE-IN

Steakburgers at their best.

Raytown, Missouri
9600 E. 50 Hiway FL 3-3454

Congratulations



9021 E. 50 Highway

We Give S & H Green Stamps

Courteous Friendly Service

SPENDERS

S
I
S
S
Y

Linda Abernathy
President
Pat Cline
Vice-President
Elaine McDaniel
Secretary
Judy Vahle
Treasurer

Donna Anderson
Frankie Agee
Rae Blevins
Marie Caruso
Carolyn Cleveland

Peg Cox
Donna Embry
Karen Garrett
Rose Lowery
Sue Sailors



Myers
PACEMAKERS
OF QUALITY
YEARBOOKS
in depth





COVER BY
MYERS