

MANUAL NAUTILUS



1936



# NAUTILUS

OF

## 1936

Compiled and Edited  
by the Students of

### MANUAL TRAINING HIGH SCHOOL

BILLY PETTY ..... Editor-in-Chief

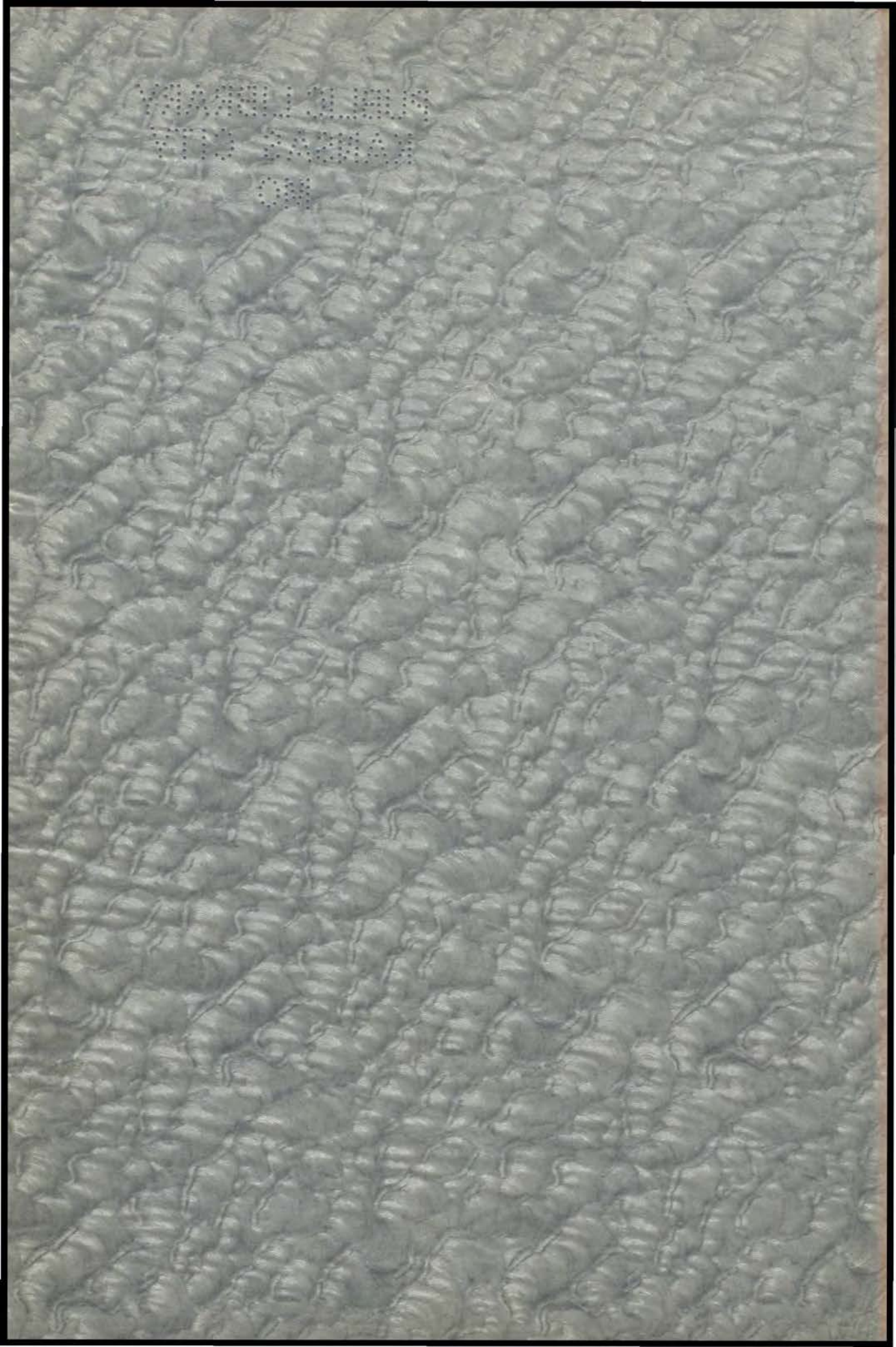
AGNES BAY ..... Associate Editor

JACQUELINE BAYAN ..... Senior Class Editor

ELIZABETH GRUNDEN ..... Senior Class Editor

RACHAEL APPLETON ..... Junior Class Editor

UNIVERSITY OF  
MICHIGAN LIBRARY  
ANN ARBOR, MICHIGAN



# NAUTILUS

OF

# 1936

Compiled and Edited  
by the Students of

## MANUAL TRAINING HIGH SCHOOL

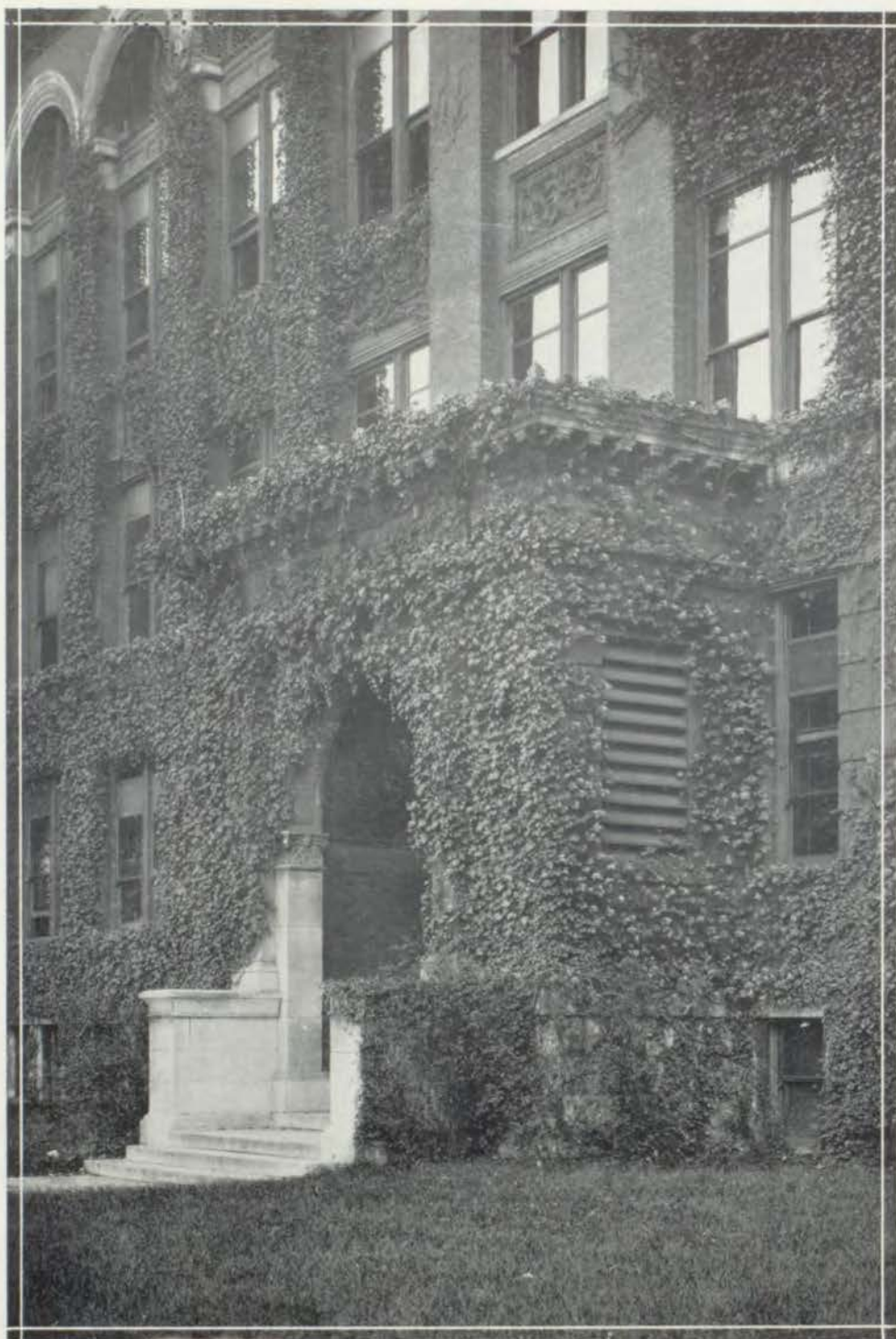
BILLY PETTY .....Editor-in-Chief

AGNES BAY .....Associate Editor

JACQUELINE BAYAN .....Senior Class Editor

ELIZABETH GRUNDEN .....Senior Class Editor

RACHAEL APPLETON .....Junior Class Editor



OUR ALMA MATER



FRANKLIN S. LAMAR  
*Principal*

## THE CHAMBERED NAUTILUS

*YEAR after year the little Chambered Nautilus goes on building to its shell loftier and finer homes. Yet the old ones remain, a basis for each new addition, and without them the new homes could never be.*

*So year after year, our Nautilus has grown finer and more beautiful, just as with the Chambered Nautilus, it could not have done so without building on what has gone before; on the glorious traditions, and the fine spirit of friendliness in our dear school. May it go on always, becoming ever finer with the passing of the years, and may the glory of our school grow brighter as each new Nautilus appears.*





BILLY PETTY  
EDITOR-IN-CHIEF

*The*  
• 1936 •  
NAUTILUS  
STAFF



AGNES BAY  
ASSOCIATE EDITOR



RACHAEL APPLETON  
JUNIOR CLASS EDITOR



JACQUELINE BAYAN  
SENIOR CLASS EDITOR



ELIZABETH GRUNDEN  
SENIOR CLASS EDITOR



ABE DREISESZUN  
ADV. MANAGER



MAXINE TIDRICK  
SOCIETY EDITOR



LAURA BELLE WEANT  
FEATURE EDITOR



BERNARD RAWLINGS  
FEATURE EDITOR



BESSIE KREVITZKY  
SALES MANAGER



AUDREY BARKER  
TYPIST



PHYLLIS TRAMMELL  
PROOF READER



MARY CATHERINE BURKE  
TYPIST

## FOREWORD

**B**EAUTIFUL memories are endearing to the heart and soul of every boy and girl. With this thought uppermost, we, the members of the Nautilus Staff, have striven to leave to the students of "Dear Old Manual," a book which will blot all of your dull and unpleasant thoughts and will fill your life with a sweetness which will brighten your gloomy hours with a cheerful presence; a presence that will live forever in your heart, within the gallery of your by-gone times.

We shall all too soon bid goodbye to our beloved school, and perhaps some of us are destined never to see it again. Yet "Every song must end," so we shall go forth bravely; finer and richer for all that our wise teachers and our fellow students have added to our character.

We sincerely hope that you will find in this little book, as you grow older, a living memorial of your former joys, the dear friends, and the happy times of your youth.

NAUTILUS STAFF 1936

## ADMINISTRATION

Delightful task! To rear the tender  
thought,

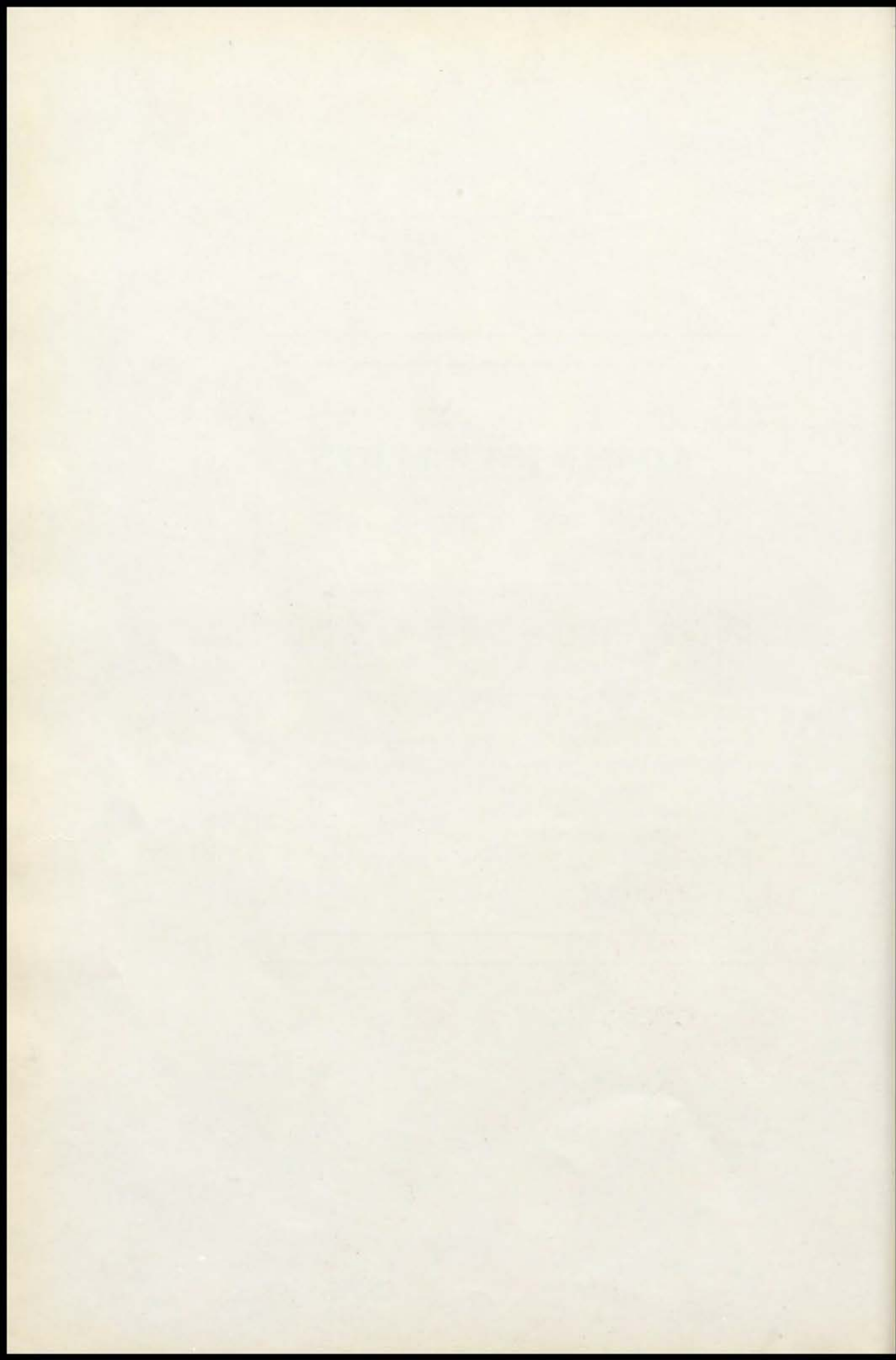
To teach the young idea how to shoot,

To pour the fresh instruction o'er the  
mind,

To breathe the enlivening spirit and  
to fix

The generous purpose in the glowing  
breast.

—Thomson



## ADMINISTRATION



CHARLES A. BARRETT  
Printing



ANGUS F. BARRY  
History



M. D. BROCK  
Botany



HANNAH BURY  
English



GERTRUDE CAMPBELL  
Study Hall



MARION CARROLL  
Art



ZULA CHASE  
Commerce



VIOLET CLAUSEN  
Music

## ADMINISTRATION



MARGUERITE DERBY  
Clerk



CHARLES DIXON  
Mathematics



DELLA E. DRAKE  
Latin



NINA A. DRAKE  
Spanish



C. C. FAIRCHILD  
Public Speaking



FRED FAUST  
R. O. T. C.



JESSIE GRIFFITH  
Domestic Art



ANNA E. HUGHES  
Domestic Science

## ADMINISTRATION



RACHEL HUTCHISON  
Art



RUTH JACOBSON  
Commerce



F. B. JOHNSON  
Shop



B. F. KIZER  
English



EMMA L. KUBE  
History



JOHN W. LAURY  
Science and Coach



J. A. LISTROM  
Mathematics



S. M. LONG  
Shop

## ADMINISTRATION



HELEN McDONNA  
English



JOHN McMURPHEY  
Physical Education



ETHEL NAGLE  
Science



ESTHER PEERS  
Librarian



DR. HELEN PERKINS  
Physical Education



P. B. S. PETERS  
Commerce



SHELLEY PETERS  
Commerce



GEORGE A. PETERSON  
History



## ADMINISTRATION



ELIZABETH PUGH  
History



RUTH RENNICK  
English



ELIZABETH SCOTT  
Educational Counselor



FRANCES SEXTON  
Registrar



D. H. SMITH  
Physical Education



LAURA M. STEARNS  
English



RUTH HAWKINS  
Hygienist



JAMES HILL  
Custodian

## MANUAL ODE

Hail to thee, our dear old Manual,  
We would sing of thee!  
Oh, a fount of inspiration  
Thou wilt ever be.

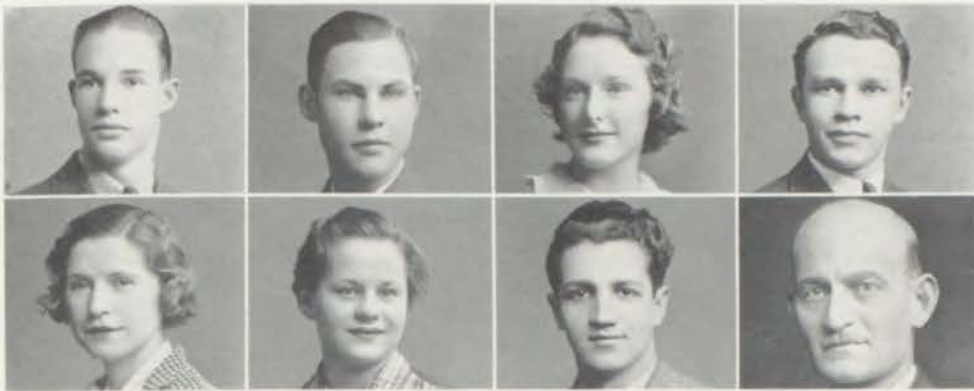
### CHORUS

Wave the crimson banner proudly,  
Make its colors glow!  
Manual's praises singing loudly  
As we onward go!

Glory, glory to old Manual!  
Blessings come to thee!  
Hearts and minds and hands so loyal  
All would honor thee.

Whether near or far from shelter  
Of thy peaceful fold,  
Dear old altar, 'tis to thee our  
Yearning fancies hold.

# N A U T I L U S



## SENIOR CLASS OFFICERS

Billy Petty .....	<i>President</i>
Leonard Fergus .....	<i>Vice-President</i>
Agnes Bay .....	<i>Secretary</i>
Barney Altman .....	<i>Treasurer</i>
Reva Aronson .....	<i>Giftorian</i>
Eugene Leach .....	<i>Sergeant-at-Arms</i>
George Peterson, Elizabeth Pugh .....	<i>Advisers</i>

## SENIOR COMMITTEES

FINANCE—Barney Altman, chairman; Edwin Brown, Bert McGuirk, Elmo Hargrave, Lillian Elliott, Ruby Stolov, Eugene Leach, Helen Nicholls, Maxine Tidrick, Jacqueline Bayan.

CLASS DAY—Phyllis Trammell, chairman; Dorothy Patton, Lorraine Larson, Florene Jones, James Tucker, Bernard Rawlings, Howard Draffen, Lee Collins.

PIN AND RING—Tom Couser, chairman; Billy Petty, Agnes Bay, Lloyd Jenkins, Paulanna Peters, Opal Whittle, John Lee Smitherman, Laura Belle Weant.

FLOWER—Cleo Stolberg, chairman; Edith Studna, Eileen Leach, Mary Benizio, Maydelle Vogel, Mickey Russo, Elizabeth Grunden.

ANNOUNCEMENT—Reva Aronson, chairman; Ivaruth Brotherton, Evelyn Boutross, James Wilhoit, Myrtle Brandstetter, Doyle Owens, June Shepard, Leonard Fergus.

CANDIDATES FOR GRADUATION

GIRLS

Adams, Maxine  
 Arenson, Bertha  
 Arnold, Mary Alice  
 \*Arnone, Lucy  
 \*Aronson, Reva  
 Atchley, Marjorie  
 \*Bay, Agnes  
 \*Bayan, Jacqueline  
 Benizio, Mary  
 \*Boutross, Evelyn  
 Boyle, Imogene  
 Brandstetter, Myrtle  
 Bratt, Sarah M.  
 \*Brotherton, Ivaruth  
 Chapin, Lavine  
 Cookus, Beverly  
 Crain, Nova  
 Crawley, Vera  
 Carrell, Mayme  
 Dannenberg, Elsie  
 DeGrado, Josephine  
 Dickson, Elizabeth  
 \*Dreiseszun, Mollie  
 Duff, Dorothy  
 Dugan, Anna  
 Elliott, Lillian  
 Elliott, Ruth  
 Etiopia, Florence  
 Farnsworth, Grace  
 Farrar, Dorothy  
 Folliett, Dorothy

Foster, Violet  
 Frye, Ann  
 Gillotti, Genevieve  
 Goshorn, Dorothy  
 Gregory, Nadine  
 Grimes, Eva  
 Grunden, Elizabeth  
 Hager, Madalene  
 Harris, Audrey  
 Hixson, Elsie  
 Hughes, Cecelia  
 Johnson, Helen J.  
 Jones, Florene  
 King, Virginia  
 \*Krevitzky, Bessie  
 Krevitzky, Minnie  
 Lairson, Opal  
 Larson, Lorraine  
 Larson, Elva  
 Latimer, Dorothy  
 Leach, Eileen  
 Liggett, Leta  
 Loudon, Mary  
 McEwen, Jeanne  
 McHargue, Helen  
 Mangiaracina, Ann  
 Martin, Erma  
 Mason, Helen  
 Nelson, Roberta  
 Nichols, Ella May  
 Nicholls, Helen  
 Patton, Dorothy

Patton, Kathryn  
 Peters, Paulanna  
 Peterson, Olga  
 Reeves, Virginia  
 \*Russell, Alice  
 Russo, Mickey  
 Seifert, Rosemary  
 Shelton, Marjorie  
 Shepard, June  
 Sherry, Rita  
 Smith, Kathryn  
 \*Sollars, Dorothy  
 \*Solo, Jean  
 Steele, Roberta  
 Stein, Alice  
 Stivaletti, Mickey  
 Stolberg, Cleo  
 Stolov, Ruby  
 \*Studna, Edith  
 \*Tidrick, Maxine  
 \*Trammell, Phyllis  
 Tyndall, Lorraine  
 Vogel, Maydell  
 Warner, Marietta  
 Wasik, Marie  
 \*Weant, Laura Belle  
 Webber, Mary Louise  
 Whittle, Opal  
 Williams, Winona  
 Wolfrom, Connie  
 Woodard, Helen

BOYS

Abbott, Kenneth  
 Adams, Everett  
 Altman, Barney  
 Arnone, Thomas  
 Ballard, Elton  
 Ballou, Robert  
 Barelli, Anthony  
 Barnett, Lawrence  
 Barton, Raymond  
 Benenate, Tom  
 Birdsong, Douglas  
 Bonadonna, James  
 Boxer, Martin  
 Brown, Edwin  
 Brown, Elwyn  
 Carrola, Carl  
 Chapin, Robert  
 Cohen, William  
 Collins, Lee  
 Coulter, Robert  
 Couser, Tom  
 Cox, Norman  
 D'Angelo, Peter  
 Daub, Ray F.  
 Davis, Roy  
 Dinus, Richard  
 Draffen, Howard  
 \*Dreiseszun, Abe  
 Drinkard, Donald  
 Eberhart, Jay  
 Easter, Donovan

Ellis, Charles  
 Farren, Lyle  
 Feinberg, Harry  
 Feirstein, Joe  
 \*Fergus, Leonard  
 Fitzpatrick, John  
 Foster, Lee Mast  
 Frogue, William  
 Gordon, Harold  
 Graves, Alva  
 Gunta, Pat  
 Hargrave, Elmo  
 Harris, Norman  
 Hawes, Harry  
 Hembree, John  
 Hudson, James  
 Jenkins, Lloyd  
 Jones, Fred  
 Kaufman, Max  
 \*Klein, Sam  
 Lawrence, Harold  
 Lawson, Charles  
 \*Leach, Eugene  
 \*Lerner, Victor  
 Licata, Lawrence  
 Louis, Dan  
 Lucas, William  
 \*McGuirk, Bert  
 Madrid, Duve  
 Maggio, John  
 Martin, Harry  
 Milam, James

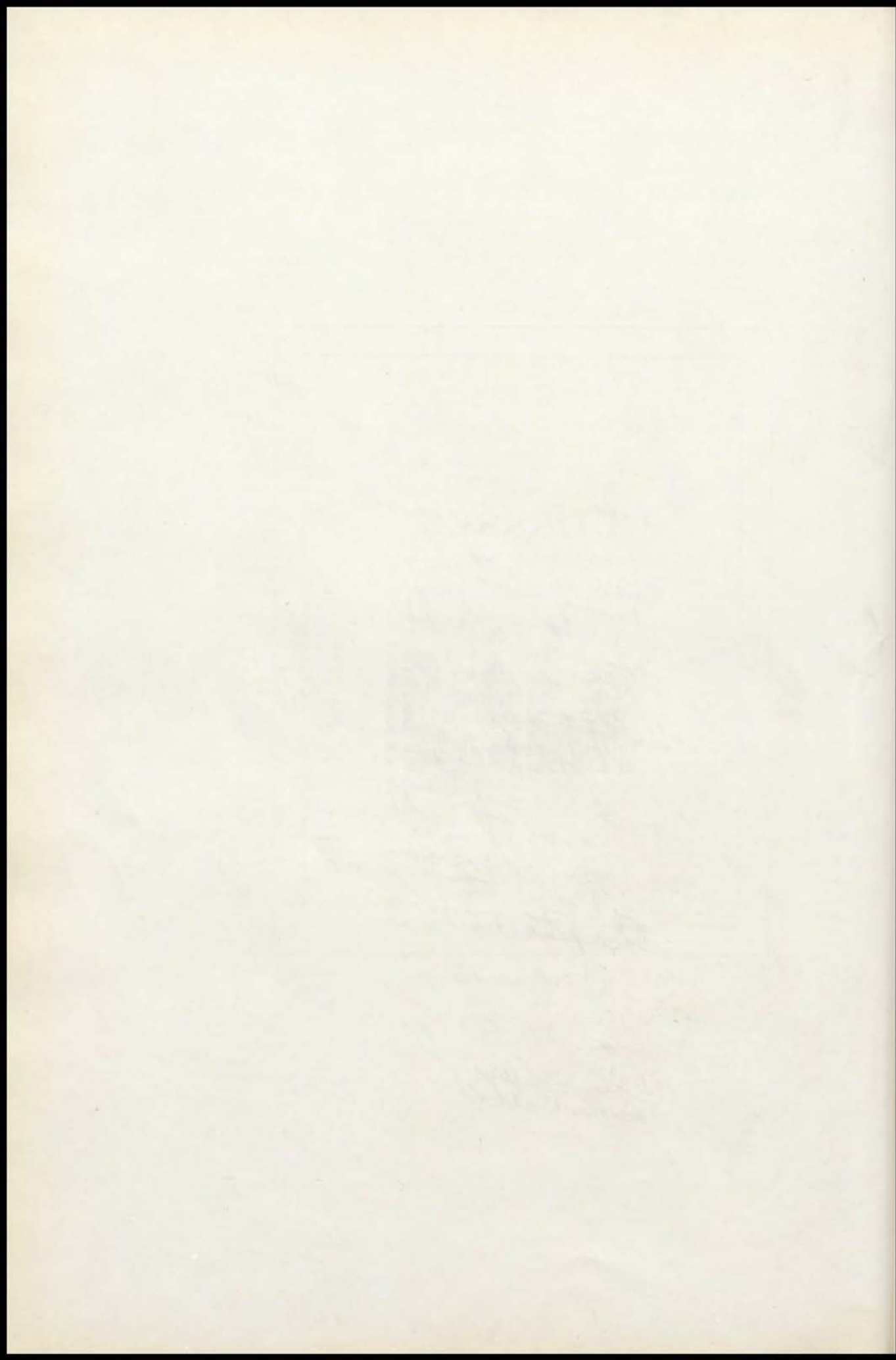
Milazzo, Angelo  
 Miller, John  
 Moser, Frank  
 Nelson, James Wesley  
 Overton, Delbert  
 \*Petty, Billy  
 Fiaskett, Earl  
 Randazzo, Tony  
 \*Rawlings, Bernard  
 Rendina, Louis  
 Rentsch, Donald  
 Rentsch, Robert  
 Robertson, Harry  
 Richardson, Malcolm  
 Scott, Charles  
 Smitherman, John  
 Sorrentino, Albert  
 Stark, Raymond  
 \*Stephens, Silas  
 Stewart, James  
 Terry, Orval  
 Travis, Clifton  
 Totta, Tony  
 Tucker, James E.  
 Turner, Richard  
 Wallace, Fred  
 Webber, Charles  
 Wilhoit, James  
 Wood, William L.  
 Wright, Robert  
 Yoos, Albert

\*Members of National Honor Society

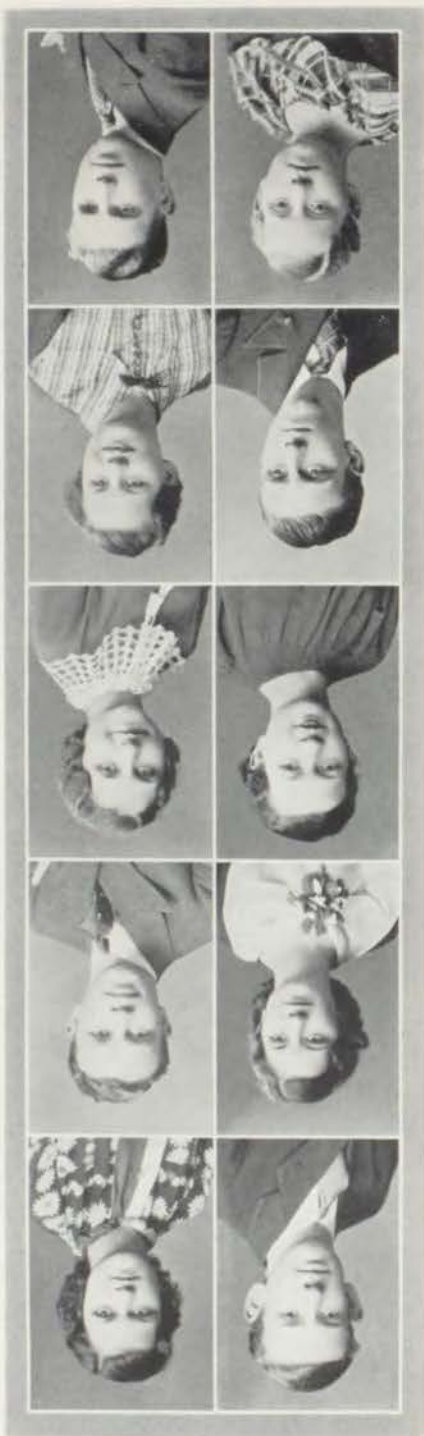
## CLASSES

Defer not till tomorrow  
to be wise,  
Tomorrow's sun on thee  
may never rise.

—Congreve



GRADUATES



**EVELETT ADAMS**  
 Everett was liked by everyone at Manual. Freshmen found him a knight - protector who championed them against the onslaughts of elevator ticket salesmen.

**MARY ALICE ARNOLD**  
 Athena Literary Society; Recording Secretary; Health Council; National Honor Society; Program, Candle Bearer.

**BETHA ARNOLD**  
 Burytonian Literary Club; Fashion Revue; Gym Show; Scribblers Club.

**THOMAS ARNOLD**  
 Health Council; Boys High School Club.

**MARGORIE ATCHLEY**  
 An earnest person who deserves all the praise Manual students give her.

**MAXINE ADAMS**  
 Athenian Literary Society; Girls "M" Club; Duck Club; Life Saving; Westport Dance; Convention Hall Dance; Health Club

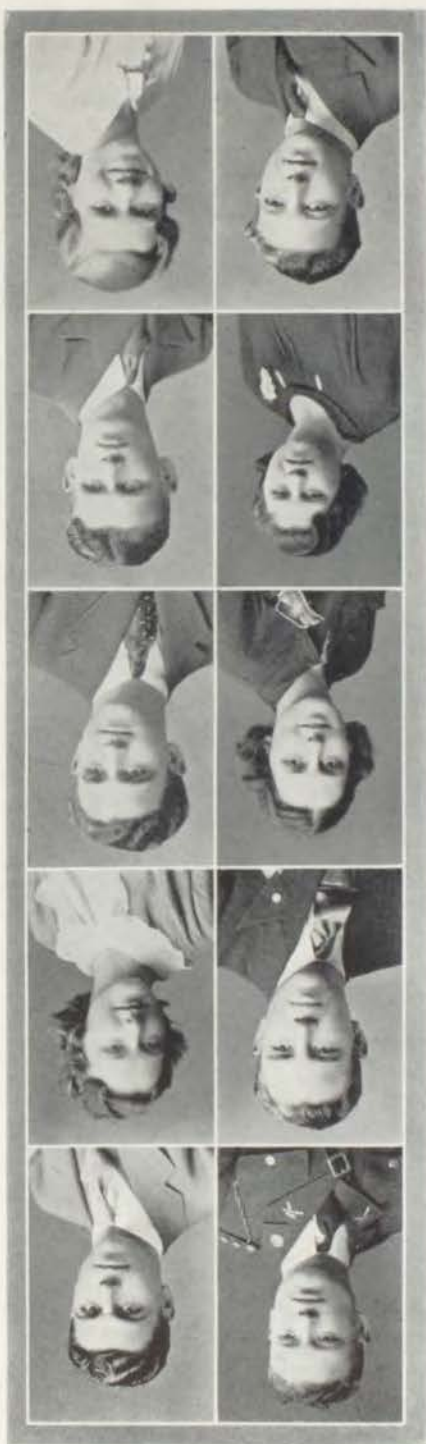
**BARNEY ALTMAN**  
 Hamiltonian Literary Society; Student Council; Mannville Staff; News-writer and Business Manager; Junior Representative; Senior Finance Committee; Class Officer; Treasurer; Senior Finance Committee; Chairman.

**LUCY ARNOLD**  
 Athenian Literary Society; Manual Art Society; President, Secretary; Scribblers Club; Fashion Show; Junior Decoration Committee; Astorian Debate Club; Mannville Representative; National Honor Society.

**REVA ARNOLD**  
 Girl Reserves, President; Athenian Literary Society; Vice-President; Manual Forensic and Dramatic League, Secretary; Debate Team; Dramatic Plays; Senior Officer, Giffonian; Senior Announcement Committee; Chairman; Student Council; Music Profile; Fashion Show; National Honor Society.

**ROBERT BALLOU**  
 All who knew him will agree that his skill with the yo-yo was in itself sufficient reason for his popularity.

GRADUATES



**ANTHONY BARELLA**  
 Boys' "M" Club; First Team Football; Track Team; Second Team Basketball; Inter-Class Swimming Meet; Inter-Class Basketball; Inter-Class Track; Inter-Class Baseball.

**AGNES BAY**  
 Nauticus Staff, Associate Editor; Athena Literary Society, President; Girls' Club, Secretary; "M" Club, Secretary; Senior Class Officer, Secretary; Senior Pin and Ring Committee; Senior Life Saving; Duck Club; Scribblers' Club; A Cappella Choir, National Honor Society.

**TOM BENEXATE**  
 Too busy helping others to bother about himself, Tom's honors were few, but he placed friendship above material gains.

**DOUGLAS BRIDSON**  
 Bentonian Literary Society; Manual Forensic and Dramatic League; Health Council.

**IMOENE BOYLE**  
 Art Society; Junior Life Saving; Duck Club; Gym Show; Fashion Revue.

**ELTON BALLARD**  
 R. O. T. C., Captain; R. O. T. C., Squad, Commander; Artistic Day Parade; Debate Team; Dramatic Team; Second Team; Constitutional Orations; Manual Forensic and Dramatic League; Sergeant-at-Arms; Manual Society of Debate, Vice-President.

**RAYMOND BARTON**

Manual Society of Debate; R. O. T. C., Sergeant; R. O. T. C., Field Meet; Crack Platoon; Crack Company; R. O. T. C., Circus; Manual Officers' Club; Student Council; "A Bit of This and That."

**JACQUELINE BAYAN**

Nauticus Staff, Junior Class Editor; Senior Finance Committee; Junior Class Officer, Treasurer; Junior Ballet; Athena Literary Society, Treasurer; Hurytomian Literary Club, President; A Cappella Choir; Music Frolic; Kansas City Music Contest; National Honor Society.

**MARY BENIZIO**

Girls' "M" Club, Sergeant-at-Arms; Girl Reserves; Volleyball Manager; Baseball; Teachers' Convention Dance; Senior Flower Committee; Duck Club; Life Saving; Manual Staff; Art Editor; Gym Show; Large Letter.

**JAMES BONNADONNA**

Even Sherlock Holmes could not have found a single person in Manual who was not his friend.



GRADUATES

MARTIN BOXER

Hamiltonian Literary Society; Health Council; Student Council; Senior Announcement Committee; Glee Club; Inter-Class Basketball and Baseball Champions.



IVARUTH BROTHERTON

Student Council; Health Council; Manualite Staff; Senior Announcement Committee; Athena Literary Society; Girls' "M" Club; Gym Show; Basketball, Captain; Volleyball; Debate Team; Small and Large Letter; National Honor Society.

EVELYN BOUTROSS

Athena Literary Society, Secretary; Girl Reserves, Vice-President; Frances Scarritt Hanley Girl; Girls' "M" Club; Student Council; Junior Decoration Committee; Senior Announcement Committee; School Letters; Basketball, Captain; Tennis, Manager; National Honor Society.



MYRTLE BRANDSTETTER

Scribblers' Club; A Cappella Choir.

SARAH BRATT

Student Council; Manualite Representative; Hamiltonian Literary Society, Historian; Art Society; Scribblers' Club; Girl Reserves.



EDWIN BROWN

Boys' "M" Club, President; Manual Society of Debate; Senior Finance Committee; Football, Captain; ALL STAR Team; Track Team; Student Manager.

CARL CAROLLA

His records in Manual's gym classes will long remain an incentive to ambitious athletes.



ROBERT CHAPIN

Boys' High School Club; Intra-Mural Sports.

LAVINE CHAPIN

A sweet tempered, industrious girl whom all who have the pleasure of knowing her sincerely like.



NOVA CRAIN

Manual Art Society; Laureate Club.

GRADUATES

VERA CRAWLEY

Bentonian Literary Society; Health Council; Student Council; Gym Show; Music Frolic; A Cappella Choir; Basketball; Junior Finance Committee.



LEE COLLINS

Manual Society of Debate, Treasurer; Manual Forensic and Dramatic League, Vice-President; Constitutional Orations; Charity Speaker; Orchestra; Debate Team; Play Cast; Manual Officers' Club; Student Council; Mixer Orchestra; Senior Class Day Committee.

ROBERT COULTER

Manual Society of Debate; R. O. T. C. Corporal; Manual Officers' Club; Rifle Team; R. O. T. C. Circus; Crack Platoon; Crack Company; A Cappella Choir; Music Frolic; Boys' Quartette.



BEVERLY COOKUS

Health Council; Gym Show; Junior Ballot.

THOMAS COUSER

Bentonian Literary Society, President, Treasurer; Manual Forensic and Dramatic League, President, Treasurer; Burytonian Literary Club, President; Boys' High School Club, President; Senior Pin and Ring Committee, Chairman; Debate; Play Cast.



NORMAN COX

Manual Society of Debate, Sergeant-at-Arms; Student Council; Health Council; Manual Officers' Club; Manual Rifle Team; R. O. T. C. Circus; Hop Committee; Cadet Hop.

PETE D'ANGELO

Bentonian Literary Society, Sergeant-at-Arms; Burytonian Literary Club; Student Council; Boys' High School Club.



RAY DAUB

Ray will be remembered by his many friends as a quietly studious boy who made an excellent example of the student Manual is proud to present a diploma.

JOSEPHINE DEGRADO

Athena Literary Society, Sergeant-at-Arms; Manual Forensic and Dramatic League; Girl Reserves; Burytonian Literary Club; Parliamentarian; Scribblers' Club; Teachers' Convention Dance; Gym Show; Junior Finance Committee; Student Council.



ELIZABETH DIXON

A sweet and likeable girl who knows her literature.

GRADUATES

HOWARD DRAFFEN

Manual Society of Debate, Secretary; Debate Team; Senior Class Day Committee; Student Council; R. O. T. C. Circus; Crack Company and Platoon; Play Cast.



ABE DREISESZUN

Manualite Staff, Advertising Manager; Nautilus Staff, Advertising Manager; Art Society, Treasurer, Vice-President; Hamiltonian Literary Society, Secretary; Student Council.



MOLLIE DREISESZUN

Hamiltonian Literary Society; Manual Art Society, Secretary; Girl Reserves; Fashion Show; Scribblers' Club, Manualite Representative; Laureate Club; National Honor Society.



DONALD DRINKARD

Manual Forensic and Dramatic League; Bentonian Literary Society; Football; Fall Play Cast.



ANNA DUGAN

Athena Literary Society; Manual Art Society; Laureate Club.



DONAVAN EASTER

A boy with high ideals who has won the admiration of everyone.



JAY EBERHART

Burytonian Literary Club; Orchestra.



RUTH ELLIOTT

Athena Literary Society; Health Council; Student Council.



LILLIAN ELLIOTT

Junior Finance Committee; Senior Finance Committee; Scribblers' Club, Banker.



FLORENCE ETIOPIA

Girls' "M" Club; Baseball Manager; Manualite Staff, Cub Reporter; Junior Life Saving; Senior Life Saving; Duck Club; Gym Show; Giant Volleyball; Regular Volleyball; Athletic Letter; Scribblers' Club.



GRADUATES

LEE FOSTER

Manualite Staff, Front Page Editor; Health Council; Student Council; Manual Officers' Club; Manual Society of Debate; R. O. T. C., Corporal; R. O. T. C. Field Meet, Crack Platoon, Crack Company.



GRACE FARNSWORTH

She has worked diligently and the results have been most pleasing.

DOROTHY FARRAR

Basketball; Baseball, Captain; Volleyball; Girls' "M" Club; Fashion Show; Gym Show.



LYLE FARREN

His quiet manners and deep, low voice will be remembered by all at Manual.

JOE FEIRSTEIN

Hamiltonian Literary Society; Philatelic Club, President; Student Council; Health Council; Intra-Mural Basketball; Junior Finance Committee.



HARRY FEINBERG

Student Council; Hamiltonian Literary Society, Sergeant-at-Arms; Intra-Mural Basketball; Junior Refreshment Committee, Chairman; Philatelic Club.

LEONARD FERGUS

Senior Class Officer, Vice-President; Boys' "M" Club; Football; Basketball; Track, Winner of Half-Mile Record for Kansas City; National Honor Society.



JOHN FITZPATRICK

R. O. T. C. Crack Company; Crack Platoon; R. O. T. C. Circus; Football; Manual Officers' Club; R. O. T. C., Sergeant; Bentonian Literary Society; Beginners' Life Saving Badge.

DOROTHY FOLLIETT

One girl who has worked and gained much.



VIOLET FOSTER

Bentonian Literary Society; Girls' "M" Club; Scribblers' Club; Baseball; Basketball; Student Council; Health Council; Fashion Revue; Musical Frolic; Giant Volleyball.

GRADUATES

GENEVIEVE GILLOTTI

Dress Revue; Gym Show; Junior and Senior Life Saving; Girls' "M" Club; Duck Club; Athletic Letter; Volleyball; Basketball.



DOROTHY GOSHORN

Athena Literary Society, Corresponding Secretary, Critic; Girls' "M" Club; Girls' Swimming Manager; Duck Club, President; Junior and Senior Life Saving; Athletic Letters; Basketball; Baseball; Volleyball; Hockey; Girl Reserves; Health Council.

ALVA GRAVES

Manual Society of Debate; Manualite Representative; Gym Show; R. O. T. C., Crack Squad, Corporal; Crack Platoon; Crack Company; Manual Officers' Club; R. O. T. C. Circus.



NADINE GREGORY

Athena Literary Society; Burytonian Literary Club; Health Council.

EVA GRIMES

A quiet girl with a sweet disposition, who has won the love and admiration of all.



ELIZABETH GRUNDEN

Nautilus Staff, Senior Class Editor, Proof Reader; Senior Flower Committee; Burytonian Literary Club, President, Vice-President; Athena Literary Society; A Cappella Choir; Glee Club; Kansas City Music Contest; Triple Trio.

PAT GUNTA

Manual Forensic and Dramatic League; Mixer Orchestra, Director; Play Cast; Orchestra.



ELMO HARGRAVE

R. O. T. C., Ranking Major of Kansas City High Schools; Executive Officer of Kansas City Regiment; Crack Company, Commander; R. O. T. C. Circus, Unit Commander; Manual Officers' Club, President; Student Council, President; Manual Society of Debate.

NORMAN HARRIS

Manual Art Society; Boys' High School Club; Junior Decoration Committee; Football, Second Team.



JOHN HEMBREE

Manualite Staff; Orchestra; R. O. T. C., Crack Platoon; Crack Company; R. O. T. C. Circus; Armistice Day Parade.

GRADUATES

ELSIE HIXSON

Scribblers' Club, Secretary; Health Council.



JAMES HUDSON

Manual Art Society, President; Boys' High School Club, Secretary, Treasurer; Health Council; Junior Decoration Committee.

CECELIA HUGHES

Athena Literary Society, Treasurer; Girls' "M" Club, Secretary; School Play; Senior Life Saving; Gym Show; Duck Club; Junior Basketball, Captain.



LLOYD JENKINS

Burytonian Literary Club, President, Secretary; Tennis Team; Senior Pin and Ring Committee; Music Frolic; Student Council, Secretary.

HELEN JOHNSON

Girls' "M" Club, Vice-President; Athena Literary Society; Duck Club, Secretary; Scribblers' Club; Student Council; Teachers' Convention Dance; Basketball; Senior Life Saving.



FLORENE JONES

Girls' "M" Club; Senior Basketball, Captain; Senior Baseball, Captain; Giant Volleyball; Regular Volleyball; A Cappella Choir; Cadet Hop Program; Senior Class Day Committee.

FRED JONES

R. O. T. C., Lieutenant; Crack Company; Crack Platoon; Crack Squad; R. O. T. C. Circus; Armistice Day Parade; Liberty Memorial Frieze Dedication; Student Council; Manual Officers' Club.



VIRGINIA KING

Girls' "M" Club, Corresponding Secretary; Manualite Representative, Critic; Volleyball; Basketball; Baseball; Teachers' Convention Dance; Junior Ballot; Gym Show; Manualite Staff; Duck Club; Large Letter; Small Letter.

SAM KLEIN

Student Council; Burytonian Literary Club; Bentonian Literary Society; Corridor Cleanup Committee; National Honor Society.



BESSIE KREVITZKY

Nautilus Staff, Sales Manager; Hamiltonian Literary Society, President, Vice-President; Manual Forensic and Dramatic League, Critic-Reporter; Dramatic Plays, Lead; Girls' Orations, First Place; Student Council; Senior Flower Committee; Gym Show; Winner of Sales Contest; National Honor Society.

GRADUATES

MINNIE KREVITZKY

Hamiltonian Literary Society, Vice-President, Parliamentarian, Treasurer; Manual Forensic and Dramatic League; Student Council; Health Council; Junior Finance Committee; Gym Show; Teachers' Convention Dance; Play Cast; Volleyball; Basketball.

ELVA LARSON

Girls' "M" Club, Corresponding Secretary; Bentonian Literary Society; Small Letter; Gym Shield; Regular Volleyball, Manager; Baseball; Basketball; Junior Life Saving; Duck Club; Manualite Staff; Gym Show; Teachers' Convention Dance.

DOROTHY LATIMER

Basketball; A Cappella Choir; Fashion Revue; Music Frolic.

EILEEN LEACH

Athena Literary Society; Student Council; Manual Forensic and Dramatic League; Scribblers' Club; Burytonian Literary Club; A Cappella Choir.

VICTOR LERNER

Manual Forensic and Dramatic League, Parliamentarian; Hamiltonian Literary Society, President, Parliamentarian; Boys' "M" Club; Tennis Team; Declamation Contest; Student Council; Health Council; School Tennis Letter; National Honor Society.



OPAL LAIRSON

Girl Reserves; Music Frolic.

LORRAINE LARSON

Bentonian Literary Society, Parliamentarian, Historian; Manual Art Society, Secretary; Nautilus Staff; Manualite Staff; Junior Vice-President; Junior Ballot; Entertainment Committee; Senior Class Day Committee; Debate Team; Play Cast; Student Council.

CHARLES LAWSON

Basketball, Coffeyville, Manual; Track C. Club, Coffeyville; Boys' "M" Club; Swimming Club, Coffeyville; Spanish Club, Coffeyville.

EUGENE LEACH

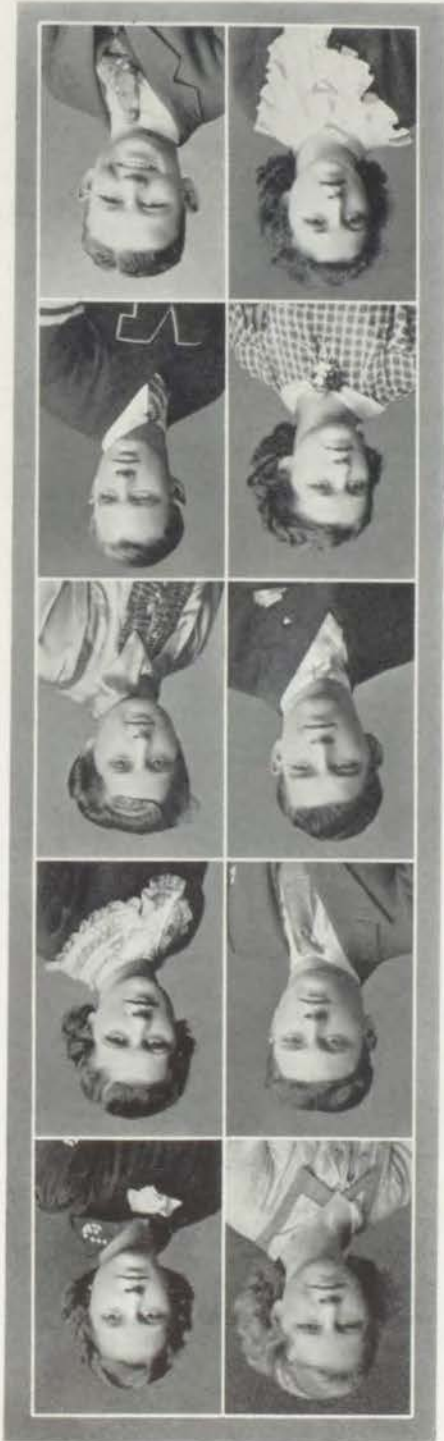
Junior Class Officer, President; Senior Class Officer, Sergeant-at-Arms; Senior Class Ballot, Beau Brummel; Basketball; Boys' "M" Club; Manual Society of Debate; National Honor Society.

LAWRENCE LICATA

Sophomore Officer; Junior Class Officer, Sergeant-at-Arms; Manual Art Society, Vice-President; Bentonian Literary Society; Football Team; Basketball Team; Sophomore Ballot; Junior Ballot; Eight Semester Gym Award.

Twenty-Seven

GRADUATES



JEANNE McEWEN  
Bentonian Literary Society, Historian, Participant, Manual Art Society, Vice-President, Treasurer, Gym Show, Fashion Show.

HELEN McHARGUE  
Manual Art Society, Corresponding Secretary, Athena Literary Society, Junior Finance Committee, Duck Club, Girl Reserves, Basketball, Volleyball, Baseball, Health Club.

ANN MANGIARACINA  
Girls' "M" Club, Basketball Manager, Assistant Baseball Manager, Junior Life Saving, Senior for Life Saving, Senior Life Saving, Duck Club, Gym Show, Grant Volleyball, Regular Volleyball, Fashion Revue, Athletic Letter, All-STAR Basketball Team.

HARRY MARTIN  
Boys' "M" Club, Manual Art Society, Track, Football, First Team, Football Letter.

JIMMIE MIYAKI  
Junior Class Officer, Secretary, Tennis Letter, Indoor Tennis Champion, Manual Society of Debate, Art Society, Boys' High School Club, Mannahite Staff, Ping Pong Champion, Basketball Mascot, Intramural Basketball All-STAR.

LETA LUGGETT  
Girls' "M" Club, Basketball, Baseball, Volleyball, Mannahite Staff.

BERT MCGURK  
Bentonian Literary Society, Vice-President, Boys' High School Club, Vice-President, Student Council, Orchestra, Health Council, Vice-President, Mannahite Staff, Front Page Editor, Senior Finance Committee, National Honor Society.

GEORGE McKEEHAN  
R. O. T. C., Crack Company, Crack Platoon, Sharp and Flare, Senior Life Saving, Bury-Bentonian Literary Club.

ERMA MARTIN  
Girls' "M" Club, Critic, Scribbler's Club, Critic, Grant Volleyball, Regular Volleyball, Basketball, Baseball, Fall Play, Health Council.

HELEN MASON  
Manual Art Society, Scribbler's Club.



GRADUATES

ANGELO MILAZZO

Laureate Club; Burytonian Literary Club; Treasurer; Inter-Class Baseball; Inter-Class Basketball; Glee Club.



FRANK MOSER

Boys' High School Club; Health Council; Student Council; R. O. T. C.; Crack Squad; Crack Platoon; Crack Company.



ROBERTA NELSON

Bentonian Literary Society; Health Council; Gym Show; Girl Reserves; Volleyball.



HELEN NICHOLLS

Girls' "M" Club, President; Girl Reserves; Health Club; Duck Club, President; Baseball; Basketball; Small Letter; Swimming Manager; Teachers' Convention Dance; Junior and Senior Life Saving; Senior Finance Committee.



ELLA MAY NICHOLS

Girls' "M" Club; Giant Volleyball; Regular Volleyball; Basketball; Laureate Club.



FRANCES O'NEIL

One of Manual's best dressed ladies.



DELBERT OVERTON

Manual Society of Debate; Boys' "M" Club; Football Letter; Basketball Letter; Senior Ring and Pin Committee; Track Team.



DOBOTHY PATTON

Athena Literary Society; Music Frolic; Playcast; Junior Ballot; Class Day Program.



KATHERYN PATTON

This intelligent, well poised damsel was noted for her serene composure.



OLGA PETERSEN

Manual will remember the charm of this sweet girl for many years.



GRADUATES

PAULANNA PETERS

Burytonian Literary Club; Girls' "M" Club; Athena Literary Society; Basketball; Teachers' Convention Dance; "A Bit of This and That"; Music Frolic; Senior Pin and Ring Committee.



BILLY PETTY

Nautilus Staff, Editor-in-Chief; Senior President; Junior Ballot; Bentonian Literary Society, Treasurer; Manual Forensic and Dramatic League; Boys' High School Club; Constitutional Orations; Track; Scribblers' Club, President, Sergeant-at-Arms; A Cappella Choir; National Honor Society.

EARL PLASKETT

Basketball; Intra-Mural Sports; Health Club; Junior Ballot, Best Boy Athlete; Boys' High School Club; A Cappella Choir, President; Boys' "M" Club; Junior Finance Committee.



BERNARD RAWLINGS

Nautilus Staff, Feature Editor; Manual Society of Debate; Boys' High School Club; Manualite Staff, Front Page Editor; Senior Class Day Committee; A Cappella Choir; R. O. T. C., Individual, Crack Squad, Circus; National Honor Society.

VIRGINIA REEVES

Athena Literary Society; Burytonian Literary Club; Student Council.



LOUIS RENDINA

A tall, dark, and handsome man from the South that makes many a girl's heart go flitter-flutter.

DONALD RENTCH

Glee Club; Student Council; Health Club; Barretts' Printers, President; Intra-Mural Basketball.



MALCOLM RICHARDSON

Manual Society of Debate; A Cappella Choir; Manual Music Frolic.

HARRY ROBERTSON

A business man, he invested largely in smiles, and his returns were numerous.



ALICE RUSSELL

Scribblers' Club; Student Council; National Honor Society.

GRADUATES

MICKEY RUSSO

Gym Show; Health Council; Bentonian Literary Society; Girl Reserves; Manual Forensic and Dramatic League; Junior Refreshment Committee; Senior Flower Committee; Fashion Show.



CHARLES SCOTT

Student Council, Treasurer; Boys' High School Club; Manual Forensic and Dramatic League; R. O. T. C., Lieutenant; Manual Officers' Club, Sergeant-at-Arms; Rifle Team and Corps Area Team; Crack Platoon; Crack Company; R. O. T. C. Circus.

ROSAMARY SEIFERT

A quiet girl who is well liked by all who know her.



JUNE SHEPARD

Athena Literary Society; Astorian Debate Club; Manual Forensic and Dramatic League; Play Cast; Manualite Staff; Student Council; Senior Announcement Committee; Burytonian Literary Club, Secretary; Gym Show; A Cappella Choir; Health Council.

MARJORIE SHELTON

Burytonian Literary Club; Scribblers' Club, Treasurer; Girl Reserves; Gym Show; Music Frolic; Basketball; Volleyball.



JOHN SMITHERMAN

R. O. T. C., Captain; Crack Company, Commander; Individual, Second Place; Manual Society of Debate; Student Council, Vice-President; Senior Pin and Ring Committee; Liberty Memorial Frieze Decoration; Armistice Day Parade.

DOROTHY SOLLARS

Burytonian Literary Club, Historian; Manual Art Society, Critic; National Honor Society.



JEAN SOLO

Athena Literary Society; Manual Art Society; Girls' "M" Club; Scribblers' Club, President; National Honor Society.

ALBERT SORRENTINO

Boys' High School Club; Health Council; Student Council; Manual Forensic and Dramatic League.



RAYMOND STARK

When Raymond is listed among our top-notch authors, many, many people will be proud to know that their grandparents knew him at Manual.

GRADUATES

ROBERTA STEELE

Bentonian Literary Society; Girls' "M" Club, Treasurer; Manualite Staff; Scribblers' Club, Vice - President; Duck Club; Student Council; Manualite Reporter; Basketball.



ALICE STEIN

Hamiltonian Literary Society; Scribblers' Club; Girl Reserves; Gym Show; Dress Review.



SILAS STEPHENS

Manualite Staff; A Cappella Choir; Music Frolic; Baseball Team; National Honor Society.



JAMES STEWART

Manual Society of Debate; Manual Forensic and Dramatic League; Burytonian Literary Club; Boys' High School Club; Basketball, Second Team.



MICKEY STIVALETTI

Athena Literary Society; Manual Forensic and Dramatic League; Girl Reserves; Junior Entertainment Committee; Student Council; Gym Show; Orchestra; Fashion Show.



CLEO STOLBERG

Bentonian Literary Society, President, Treasurer; Manual Forensic and Dramatic League, President; Scribblers' Club, Vice - President; Debate, Captain; Play Cast; Senior Flower Committee, Chairman; Burytonian Literary Club, Vice - President; Junior Refreshment Committee.



EDITH STODNA

Hamiltonian Literary Society, Treasurer; Girls' "M" Club, Treasurer; Burytonian Literary Club, Critic Reporter; Scribblers' Club; Student Council; Manualite Representative; Junior Finance Committee; Senior Flower Committee; Gym Show; Teachers' Convention Dance; National Honor Society.



ORVAL TERRY

Manual Society of Debate; Boys' High School Club, Sergeant-at-Arms, Chaplin; Student Council; Orchestra; Mixer Orchestra, Business Manager; Track Team.



MAXINE TIDRICK

Nautilus Staff, Society Editor, Proof Reader, Athena Literary Society, Vice-President, Sergeant-at-Arms; Scribblers' Club, Critic - Reporter; Senior Finance Committee; Basketball; Baseball; National Honor Society.



ANTHONY TOTTA

Manual Art Society.



GRADUATES

PHYLLIS TRAMMELL

Nautilus Staff; Bentonian Literary Society, Vice - President; Girls' "M" Club, Vice - President; Senior Class Day Committee; Chairman; Junior Decoration Committee; Girl Reserves; Manualite Staff; Debate Team; Dramatic Play; School Letter; Duck Club; National Honor Society.



JAMES TUCKER

Manual Society of Debate, Vice - President; Manual Forensic and Dramatic League; R. O. T. C., Lieutenant; Cheer Leader; Health Club; Manual Officers' Club, Secretary; Crack Platoon; Crack Company; Play Cast; Orchestra; R. O. T. C. Circus.



RICHARD TURNER

Bentonian Literary Society, Sergeant-at-Arms, President; R. O. T. C., Lieutenant; Rifle Team; Corps Area Team; R. O. T. C. Circus; Crack Company; Officers' Club; Student Council.



LORRAINE TYNDALL

Manualite Staff; Student Council; Health Council; Fashion Revue; A Cappella Choir; National Scholastic Press Association Convention; Kansas State Press Convention; Junior Refreshment Committee; Music Honor Pin.

MARIETTA WARNER

Girls' "M" Club; Junior Life Saving; Basketball; Baseball; Volleyball; Duck Club; Athletic Letter.



MARIE WASIK

Athena Literary Society; Scribblers' Club; Junior Decoration Committee, Chairman.

LAURA BELLE WEANT

Athena Literary Society, President; Manual Forensic and Dramatic League; Health Council, President; National Housing Oratorical Contest; Debate Team, Captain; Charity Speeches; Play Cast; Nautilus Staff; Manualite Staff; Senior Pin and Ring Committee; National Honor Society



MARY LOUISE WEBBER

The sincere personality of this girl is reflected in her countenance.

CONNIE WOLFBEOM

Burytonian Literary Club; Junior Life Saving.



BOB WHITE

A handsome boy who has earned the respect of all.

GRADUATES

OPAL WHITTLE

Bentonian Literary Society; Girls' "M" Club; Junior Life Saving; Basketball, Captain; Baseball; Volleyball; Hockey; Student Council; Duck Club; Health Club; Athletic Letters; Senior Pin and Ring Committee; Girl Reserves.



JAMES WILHOIT

Manual Society of Debate; Manual Forensic and Dramatic League; Debate; Senior Announcement Committee.



WINONA WILLIAMS

Shorthand Scribblers' Club.



WILLIAM WOOD

A dashing young man who always is being asked, "How's the weather up there?"



HELEN WOODARD

Basketball; Baseball; Volleyball; Girls' "M" Club, President; Fashion Revue; Gym Show; Life Saving.



ROBERT WRIGHT

Student Council; R. O. T. C., Corporal.



MAYDELLE VOGEL

Gym Show; Girl Reserves; Health Council; Scribblers' Club; Senior Flower Committee; Student Council.



ALBERT YOOS

Manual Society of Debate, President, Sergeant-at-Arms; Manual Forensic and Dramatic League; Manual Officers' Club, Treasurer; Junior Decoration Committee; R. O. T. C., First Lieutenant; Rifle Team, Captain; Corps Area Team; Missouri Rifle Association Certificate.



RUBY STOLOV

Nautilus Staff; Senior Finance Committee; Hamiltonian Literary Society; Manual Forensic and Dramatic League, Secretary, Assistant Treasurer; Girl Reserves, Treasurer; Student Council; Health Council; Debate Team; Play Cast; Music Frolic, Specialty.

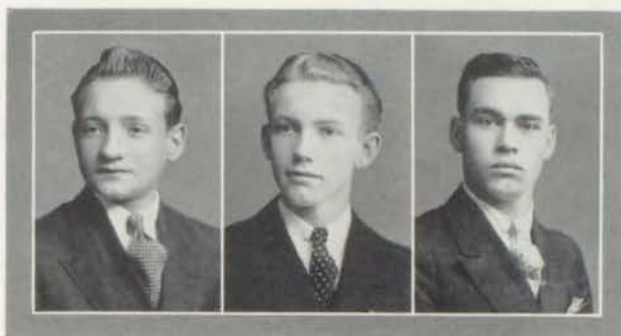


JOHN MILLER

Burytonian Literary Club; A Cappella Choir; Health Council; Music Frolic; Student Council.



GRADUATES



RICHARD DINUS

Manual Society of Debate, President, Secretary, Parliamentarian; Manual Forensic and Dramatic League, Treasurer; Freshman-Sophomore Oratorical Contest Winner; R. O. T. C., Corporal; Crack Platoon; Crack Company; R. O. T. C. Circus; Manual Officers' Club, Secretary; Junior Ballot.

WILLIAM LUCAS

His humor and news trapping ability were greatly appreciated by the Manualite's readers.

HARRY HAWES

Burytonian Literary Club, Vice-President; Junior Finance Committee; Student Council.

MANUAL'S PEP SONG

Man-u-al, Man-u-al  
This shall be our cry;  
Man-u-al, Man-u-al,  
Manual 'till I die.  
Man-u-al, Man-u-al,  
Lift the banner high.  
Man-u-al, Man-u-al, M A N-U-A L!

THE NAUTILUS STAFF of nineteen thirty-six extend their deepest thanks to all who have helped them in producing this annual, and most especially to their esteemed principal, Mr. Lamar, and to Miss Sexton and Miss Derby who have assisted them so many times.

KNOW ALL BY THESE PRESENTS

*To Whom It May Concern:*

We, worthy members of the Senior Class of 1936, do hereby legally, solemnly, and sanely bequeath to the struggling masses of care-worn heroes and heroines commonly known as the faculty of Manual Training High School, and to the lower classes, the following group of totally useless objects, to-wit:

Various works of art including priceless dog-eared and tattered volumes, carefully inscribed with our valuable autographs and exquisitely engraved with pen and ink drawings of fellow students.

Many, many wrinkles and gray hairs.

All manuscripts and themes that English teachers have managed to wring from us by threats, promises, and mental torture.

*Individual bequests:*

Lee Collins leaves his oratorical ability to Bernard Gershon.

Phyllis Trammell leaves her swimming style to anyone who cares to drown.

Norman Harris leaves his looks to LaMar Sizemore. (As if he needed them).

Jacqueline Bayan leaves her gray matter to Jimmy Kenny.

Billy Petty bequeaths his initiative and leadership to Mr. Fairchild to pass on to anyone he wishes.

William Wood leaves his height to Harvey Lathrop.

Elizabeth Grunden leaves her quiet, sophisticated manner to Arleigh Lafield.

Bessie Krevitzky leaves her sales ability to Jack Stolberg.

Beverly Cookus bequeaths her gift of gab to Eleanor Apra.

Charles Lawson leaves his basketball ability to Mitchell Lile.

Agnes Bay leaves her personality to India Stevens.

Bernard Rawlings leaves nothing, as he feels that he can't spare anything.

Paulanna Peters and Evelyn Boutross leave their close friendship to Mary Sue Moffatt and Imogene Shafer.



# N A U T I L U S

---



## JUNIOR CLASS OFFICERS

Joe Cirrincione .....	<i>President</i>
Rachael Appleton .....	<i>Vice-President</i>
Jeanette Stasi .....	<i>Secretary</i>
Joe Stolov .....	<i>Treasurer</i>
Donovan Easter .....	<i>Sergeant-at-Arms</i>
Ruth Houser .....	<i>Gift Receiver</i>
Miss Ruth Rennick, Mr. J. A. Listrom .....	<i>Advisers</i>

## JUNIOR COMMITTEES

ENTERTAINMENT—Betty Mundon, chairman; Joe Stolov, India Stevens, Esther Feinberg, LaMar Sizemore, Reina Valdiviez.

REFRESHMENT—Joe Cirrincione, chairman; Miss Ruth Rennick, Mr. J. A. Listrom.

DECORATION—LaMar Sizemore, chairman; Pete Tarantino, Don Easter, Sam Enna, Angeline Copulos, Richard Fergus, Jack Northrup, Annie Castleberry, Ruth Houser, Pauline Lewis.

## MANUAL'S NEW SCHOOL SONG

### "NOW ALTOGETHER MANUAL"

A school which gained a wide renown,  
Alumni now direct the town,  
And it's Man-u-al;  
We pioneered a brave idea;  
And proved the worth of that idea  
Did our Man-u-al.  
Our teams have a record—  
Fighting always strong—  
And so we strive for victory—  
With this stirring song.

#### CHORUS

I yell—you yell—  
Now altogether—Man-u-al,  
I know—you know—  
Our teams are bound to win;  
So come on gang, let's go!  
If I had my choice of—  
Just any school,  
I'd still pick the crimson—  
By every rule.  
I yell—you yell—  
Now altogether—Man-u-al!

GEORGE BOWLES, '08

## SENIOR BALLOT

Person Who Has Done Most For Manual.....	Billy Petty
Most Popular Girl .....	Cecelia Hughes
Most Popular Boy .....	Tom Couser
Best Girl Student .....	Jacqueline Bayan
Best Boy Student .....	Leonard Fergus
Best Girl Orator .....	Laura Belle Weant
Best Boy Orator .....	Lee Collins
Best Girl Athlete .....	Helen Nicholls
Best Boy Athlete .....	Eddie Brown
Belle Brummel .....	June Shepard
Beau Brummel .....	Eugene Leach
Best Actress .....	Lorraine Larson
Best Actor .....	Donald Drinkard

## JUNIOR BALLOT

Girl Who Has Done Most For Manual .....	Ruth Houser
Boy Who Has Done Most For Manual .....	Joe Cirrincione
Most Popular Girl .....	Betty Mundon
Most Popular Boy .....	Jack Northrup
Best Girl Orator .....	Elnora Hale
Best Boy Orator .....	Bernard Gershon
Best Girl Student .....	Rachael Appleton
Best Boy Student .....	Vernon Fernandes
Best Girl Athlete .....	Betty Bird
Best Boy Athlete .....	Carlo Cavaleri
Belle Brummel .....	Kathryn Mange
Beau Brummel .....	Mike Zuppardo



JUNIOR CLASS

GROUP I

TOP ROW: LaMar Sizemore; Sam Ruben; India Stevens; Joe Stolov; Rachael Appleton; Mike Zuppardo; Zula Mae Crowder; Jack Sussman.  
 THIRD ROW: Vera Lee Bosley; Marguerite Scimeca; Joseph Tornabene; Viola Lusher; Cary McCullough; Berniece Pitts; Rita Webb; Audrey Barker.  
 SECOND ROW: Minnie Gulotta; Mary Pitala; Alice Sheppard; Angeline Copulos; Carol Wallace; Helen Stebbins; Eva Templar.  
 BOTTOM ROW: Mollie Nesenman; Eleanor Apra; Emma Kolar; Kathleen Draine; Katherine Mange; Jeanette Stasi.



GROUP II

TOP ROW: Albert Miller; Opal Hammond; Edna Farnsworth; Juanita Saunders; Dolores Vetter; Betty Bird; Vera Richards; Marguerite Norris; Emma Lou Grover.  
 THIRD ROW: Mary Lee Hicks; Rosemary Lynn; Gwendolyn McCanon; Mary Catherine Burke; Elsie Wasik; Katherine Hayes; Edna Mae Heaton; Julia Conklin.  
 SECOND ROW: Beatrice Lafferty; Glenor Kelsey; Ruth Kwiatek; Otto Powell; Thelma Vogtman; John Warner; Carmen Conde.  
 BOTTOM ROW: Don Easter; Elnora Hale; Marjorie Sherard; Merle King; Ruth Houser; Pauline Lewis.

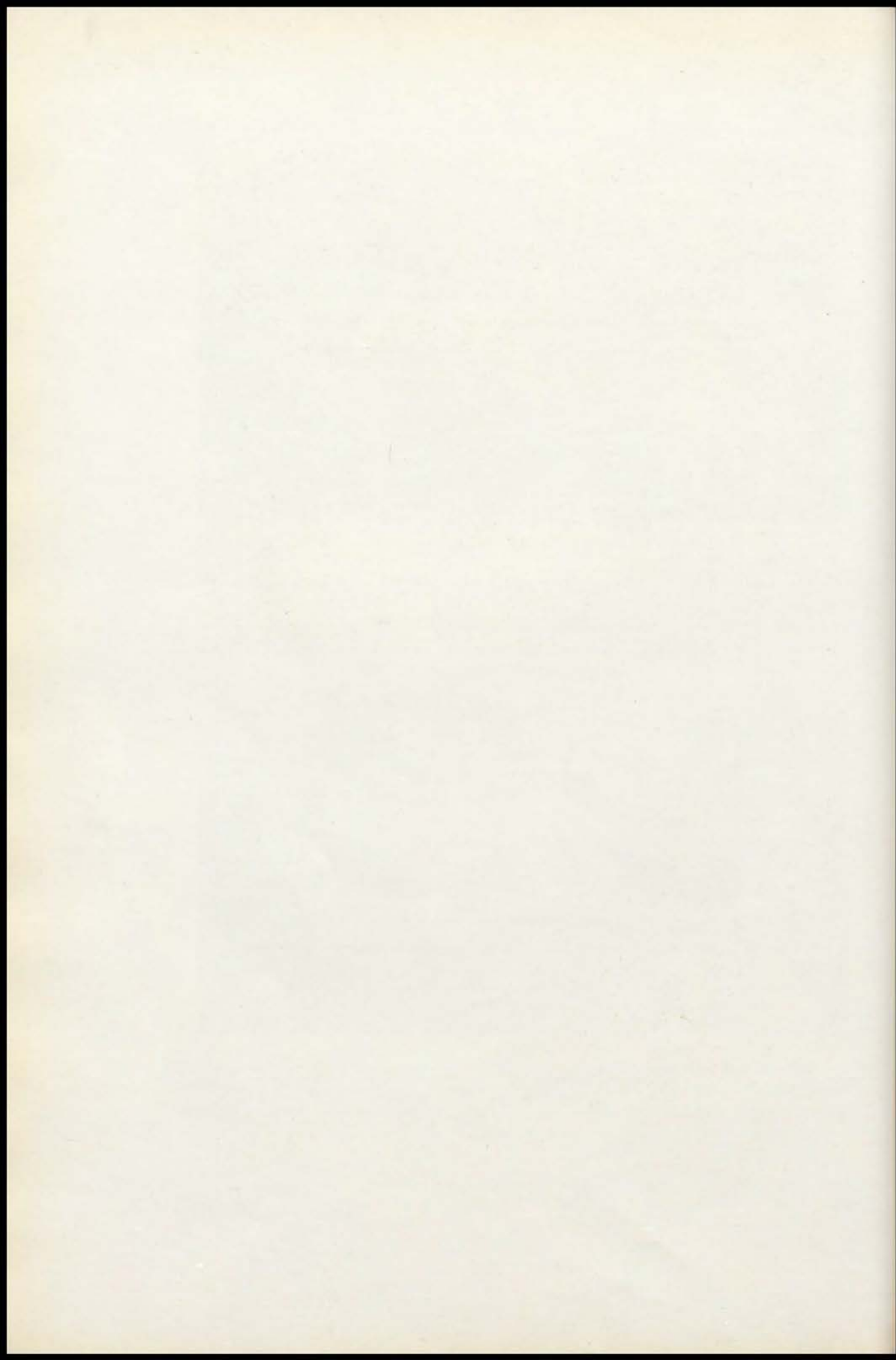
Forty

## ORGANIZATIONS

I count myself in nothing  
else so happy

As in a soul remembering  
my good friends.

—Shakespeare





THE NATIONAL HONOR SOCIETY

The National Honor Society is the most distinguished organization of its kind in the country, and to be elected to it is the greatest honor which any high school student can hope for. Only fifteen per cent of the senior class are eligible each year and each one admitted must rank very high in scholarship, leadership, character, and service. This year Jacqueline Bayan ranked first and Phyllis Trammell second.

We had a very solemn and beautiful ceremony, this year. Mr. Lamar and Miss Kube presented the gold pins symbolic of the society, and the A Cappella Choir sang "O Bone Jesu" and other impressive sacred songs.

Jacqueline Bayan  
Phyllis Trammell  
Leonard Fergus  
Alice Russell  
Jean Solo  
Silas Stephens  
Evelyn Boutross  
Laura Belle Weant

Maxine Tidrick  
Dorothy Sollars  
Bessie Krevitsky  
Reva Aronson  
Eugene Leach  
Ivaruth Brotherton  
Victor Lerner

Bernard Rawlings  
Billy Petty  
Mollie Dreiseszun  
Agnes Bay  
Lucy Arnone  
Edith Studna  
Sam Klein  
Bert McQuirk



HEALTH COUNCIL

TOP ROW: Mary Quattlebaum; Tony Lucito; Ruth Williams; Victor Vicksell; Emma Lou Grover; Joe Stolov; Maydelle Vogel; Mickey Russo; Elizabeth Dickson; Dorothy Goshorn; Gerald Leas; Jane Dameron; Helen McHargue; Martin Boxer; Wilma DeLong.  
 THIRD ROW: Ethel Harris Nagle; Henrietta Spector; Thomas Arnone; Mary Dumas; Sherman Briuer; Gwendolyn McCanon; Fannie Mae Vann; Ruth Ellis; Harold Jackson; Audrey Barker; Marjorie Sherard; June Shepard; Helen Nicholls; Pauline Lewis; Ruth Hawkins.  
 SECOND ROW: David Simmons; Lois Ruark; Albert Sorrentino; Ruth Smith; Margie Plost; Angelina Giacone; Edith Stable; Donald Rentch; Zula Mae Crowder; Juanita Sollars; Carl DiStefano; Hazel Martin; Beatrice Lafferty; Roy Goodell; Paula Wagner.  
 BOTTOM ROW: Martha O'Marron; Betty Sloan; Phyllis Weaver; Cecilia Crawford; Clara DeGrado; Laura Christian; Ethel Blankinship; Bert McGuirk; Annie Castleberry; Laura Weant; Eugene Millard; Chloe Peterson; Mary Louise Gray; Mr. Angus F. Barry.

OFFICERS

- Laura Belle Weant .....*President*  
 Bert McGuirk .....*Vice-President*  
 Annie Castleberry .....*Secretary-Treasurer*  
 Eugene Millard .....*Sergeant-at-Arms*  
 Miss Ethel Nagle .....*Adviser*  
 Miss Ruth Hawkins .....*Adviser*

The Health Council was organized in 1934 for the purpose of improving health throughout our school and community. This group has aimed to inspire all students to keep their bodies and minds in a healthy state.

The Council has consisted of a representative and alternate elected from each Home Room. Both of these are expected to attend every meeting they possibly can attend. Several teachers are present. The meetings are held after school bi-monthly. The programs are arranged by the officers and our most capable advisers. At the meetings there are either outside speakers or student speakers. The topics are chosen according to existing needs and interests.

Several excursions have been made during the study of the conservation of eyesight. The council visited the Kansas City Power and Light Company. Enthusiastic advisers have been factors in making this council a success. Advisers have been: Miss Elizabeth Scott, Miss Ruth Hawkins, Mr. F. S. Lamar, and Miss Ethel Nagle.



# NAUTILUS



## STUDENT COUNCIL

TOP ROW: Bernard Gershon; Jimmie Coffey; Harry Hawes; Albert Richardson; Robert Wright; Albert Yoos, Richard Fergus; Donald Rentsch; Ray Smith; Orval Terry; Howard Draffen.  
 THIRD ROW: Agnes Bay; Bert McGuirk; Jimmie Tucker; Marjorie Sherard; Abe Dreiseszun; Josephine DeGrado; Paulanna Peters; Louise Kenney; Mary Kennedy; Pete D'Angelo.  
 SECOND ROW: Jimmie Goff; Robert Wonderly; James Salter; Bessie Krevitzky; Ruth Kwiatek; Romanza Fairman; Dorothy Patton; Frank Sorrentino; Anthony Novello; Carol Wallace; Marguerite Norris.  
 BOTTOM ROW: Gwendolyn Cox; Reva Aronson; Charles Scott; John Lee Smitherman; Elmo Hargrave; Lloyd Jenkins; Ruby Stolov; Gwendolyn Sherman; Norma Duggins.

FIRST TERM	OFFICERS	SECOND TERM
Elmo Hargrave	<i>President</i>	Elmo Hargrave
John Smitherman	<i>Vice-President</i>	John Smitherman
Lloyd Jenkins	<i>Secretary-Treasurer</i>	Lloyd Jenkins

As always, the Student Council consisted of two members from each home room, ever working to fulfill the desires and wants of the whole school, and to protect its interests.

The Student Council sponsored many mixers which were great successes.

The most outstanding event of the year, undoubtedly, was a project in which all the high schools sent representatives to a joint session held in Mr. Shouse's office, the purpose of which was to prevent vandalism among students going to and from athletic events. This proved to be a successful project at Manual.

The Student Council did much to push the sale of our annual "Nautilus."

In all events the Student Council has co-operated with the entire school very nicely.



MANUAL SOCIETY OF DEBATE

TOP ROW: Harold Gordon; John Lee Smitherman; Elmo Hargrave; Fred Wallace; Lee Foster; Robert Coulter; Junior Watson.  
 SECOND ROW: Jack Davis; Richard Dinus; Lee Birdsong; Jimmie Milam; Orval Terry; Norman Cox.  
 BOTTOM ROW: Bernard Rawlings; Albert Yoos; Mr. George A. Peterson; Jimmie Tucker; Elton Ballard; Howard Draffen.

FIRST TERM	OFFICERS	SECOND TERM
Richard Dinus .....	<i>President</i> .....	Albert Yoos
Elton Ballard .....	<i>Vice-President</i> .....	James Tucker
Howard Draffen .....	<i>Secretary</i> .....	Robert Fairchild
Lee Collins .....	<i>Treasurer</i> .....	Lee Collins
Albert Yoos .....	<i>Sergeant-at-Arms</i> .....	Norman Cox
Jack Davis .....	<i>Reporter</i> .....	Jack Davis
Adviser .....		George A. Peterson

The Manual Society of Debate, founded in 1900, is composed of students who figure prominently in school affairs, and whose academic standards are high.

It has one of the largest alumni associations in the school, many members of which hold important positions in the business world of Kansas City. This association has regular meetings, and, although it is unable to meet with the school society, it does much to keep up the good fellowship and standards of membership. The graduating Seniors, on leaving the school, are extended invitations to join this association.

The fellowship encouraged by the Manual Society of Debate plays an outstanding part in all activities of the school. Most of its members belong to one of the several clubs organized at Manual, and some of them beside belonging to chartered clubs and societies, belong to unchartered clubs outside of school.



ATHENA LITERARY SOCIETY

TOP ROW: Dolores Vetter; Annie Castleberry; Elizabeth Grunden; Paulanna Peters; Betty Munden; Esther Johnson; Virginia Voss; Marian Doehler; Gwendolyn McCanon; Ruth Elliott; Mary Catherine Burke; Jane Dameron; Marie Wasik; Betty Bird; Helen McHargue.

THIRD ROW: Dorothy Patton; June Shepard; Mildred DeLong; Rosemary Lynn; Maxine Adams; Kathryn Hayes; Elsie Wasik; Helen Richling; Jane Bailey; Eileen Leach; Nadine Gregory; Beatrice Lafferty; Marguerite Scimeca; Jeanette Stasi.

SECOND ROW: Fannie Mae Vann; Mary Sue Moffatt; India Stevens; Edna Farnsworth; Rachael Appleton; Elnora Hale; Vera Lee Bosley; Norma Crook; Glenor Kelsey; Jean Solo; Lucy Arnone; Mickey Stivaletti.

BOTTOM ROW: Marjorie Sherard; Reva Aronson; Dorothy Goshorn; Cecelia Hughes; Evelyn Boutross; Agnes Bay; Miss Emma L. Kube; Laura Weant; Maxine Tidrick; Jacqueline Bayan; Mary Alice Arnold; Josephine DeGrado.

FIRST TERM	OFFICERS	SECOND TERM
Agnes Bay	<i>President</i>	Laura Belle Weant
Reva Aronson	<i>Vice-President</i>	Maxine Tidrick
Mary Alice Arnold	<i>Secretary</i>	Evelyn Boutross
Jacqueline Bayan	<i>Treasurer</i>	Cecelia Hughes
Laura Belle Weant	<i>Corresponding Sec'y</i>	Dorothy Goshorn
Maxine Tidrick	<i>Sergeant-at-Arms</i>	Josephine DeGrado
Dorothy Goshorn	<i>Critic</i>	Jacqueline Bayan

The Athena Literary Society was organized in 1915 for the purpose of bringing together in friendly social contact girls of fine character and high scholastic standing. They chose for their motto, "No one is wise alone." Their colors are white, symbolic of purity, and blue, symbolic of loyalty and truth. Every Athena girl must be truly representative of these qualities. Miss Emma Kube has for many years been the beloved adviser of the Athenas, and has always been greatly inspiring and helpful to them in their work.

The society has been especially active this year since it can claim many talented members, who have written a great number of delightful original poems, essays, short stories and declamations.

Outstanding and impressive events of the year were the installation, the initiation, and the Senior Farewell and birthday party. The birthday party was given in commemoration of the twenty-first year in the life of the society.

The Athenas are feeling very grown up now because they can at last vote.



BENTONIAN LITERARY SOCIETY

TOP ROW: Harold Lunn; LaMar Sizemore; Pete D'Angelo; Wilma Winkler; Inez Griggs; Elenora Hile; Opal Whittle; Elva Larson; Clifford Kelley; Jack Stolberg.  
 THIRD ROW: Roberta Nelson; Phyllis Weaver; Joe Cirrincione; Audrey Barker; Eva Templer; Helen Stebbins; Walter Clark; Violet Foster; Billy Petty.  
 SECOND ROW: Pauline Lewis; Gela Gore; Ruth Houser; Mickey Russo; Helen Lohmer; Leta Liggett; Jeanne McEwen; Madeline Pepper.  
 BOTTOM ROW: Donald Drinkard; Bert McGuirk; Cleo Stolberg; Miss Ruth Hawkins; Mr. Charles A. Barrett; Phyllis Trammell; Gladys Loney; Richard Turner.

FIRST TERM	OFFICERS	SECOND TERM
Tom Couser .....	<i>President</i> .....	Cleo Stolberg
Phyllis Trammell .....	<i>Vice-President</i> .....	Bert McGuirk
Ruth Houser .....	<i>Secretary</i> .....	Phyllis Trammell
Cleo Stolberg .....	<i>Treasurer</i> .....	Tom Couser
Jeanne McEwen .....	<i>Historian</i> .....	Lorraine Larson
Doyle Owens .....	<i>Parliamentarian</i> .....	Jeanne McEwen
Miss Ruth Hawkins .....	<i>Adviser</i> .....	Mr. Charles Barrett

The Bentonian Literary Society has striven this year to develop and encourage the giving of extemporaneous speeches. Original poems, essays, and short stories have been turned in. Many fine and useful talents have been brought out and developed in our members.

Social events in our calendar included a joint-meeting of the Bentonian Literary Society with the Hamiltonian Literary Society. This meeting offered outstanding entertainment from both societies.

This society has introduced a new friendship movement. Not only Manual, but also Northeast, Westport, and Central have Bentonian Literary Societies. By sending delegates to these other societies, we hope to secure many new ideas and opinions. Due to an unusually busy season our plans have not been fully carried out, but our fellow Bentonians expect to completely carry out these plans next year.

The greatest honor any Bentonian may receive is the awarding of the Bentonian Honor Pin to the most outstanding society member. This year Tom Couser merited the pin because of his outstanding ability as a Bentonian member. Miss Ruth Hawkins was the donor of this award.



HAMILTONIAN LITERARY SOCIETY

TOP ROW: Mollie Nesenman; David Pfefer; Jack Sussman; Sarah Bratt; Martin Boxer; Sam Ruben; Ruth Ellis.  
 SECOND ROW: Victor Lerner; Ruby Stolov; Mollie Dreiseszun; Rose Sapitsky; Alice Stein; Bernard Gershon.  
 BOTTOM ROW: Bessie Krevitzky; Abe Dreiseszun; Angus F. Barry; Minnie Krevitzky; Ruth Kwiatek; Edith Studna.

FIRST TERM	OFFICERS	SECOND TERM
Victor Lerner	<i>President</i>	Bessie Krevitzky
Bessie Krevitzky	<i>Vice-President</i>	Minnie Krevitzky
Abe Dreiseszun	<i>Secretary</i>	Ruth Kwiatek
Bernard Gershon	<i>Treasurer</i>	Edith Studna
Minnie Krevitzky	<i>Parliamentarian</i>	Victor Lerner
Joe Stolov	<i>Sergeant-at-Arms</i>	Bernard Gershon
Edith Studna	<i>Historian</i>	Edith Studna
Ruby Stolov	<i>Critic</i>	Esther Feinberg
Mr. A. F. Barry	<i>Adviser</i>	Miss Elizabeth Pugh

The Hamiltonian Literary Society was organized in 1925 for the purpose of developing the social, moral, and educational culture of its members.

For membership in this society an "M" average is required. Its members maintain a high scholastic standing, and they are among the leaders of the school.

Under the excellent supervision of its advisers, Miss Elizabeth Pugh and Mr. Angus F. Barry, the Hamiltonian Literary Society has had a very successful year. The Hamiltonians joined the Bentonian Literary Society at a party held March 20, which proved to be a very successful social event. Other outstanding events of the year were the initiation of new members and the installation of officers. Very impressive programs were presented.

This year more originality existed among its members than ever before in literary work. An amateur contest was presented in which the varied talents of the members were discovered. Abe Dreiseszun was proclaimed the winner.

The annual "Hamp" picnic, held at Swope Park, was an enjoyable occasion.



ART SOCIETY

TOP ROW: Norman Harris; Vera Richards; Carolyn Royster; Mary Louise Gray; Helen Mason; Audrey Sloan; James Hudson.  
 THIRD ROW: Pete Marsalla; Olga Petersen; Edna May Heaton; Sarah Bratt; Marie Wasik; Frank Sorrentino; Tony Totta.  
 SECOND ROW: Abe Dreiseszun; Jimmie Milam; Joseph Minardi; Angelite Copulos; Alice Sheppard; Helen Lagas.  
 BOTTOM ROW: Mollie Dreiseszun; Lucy Arnone; Miss Rachel Hutchison; Jeanne McEwen; Helen McHargue.

FIRST TERM	OFFICERS	SECOND TERM
James Hudson	..... <i>President</i> .....	Lucy Arnone
Jeanne McEwen	..... <i>Vice-President</i> .....	Abe Dreiseszun
Lucy Arnone	..... <i>Secretary</i> .....	Mollie Dreiseszun
Abe Dreiseszun	..... <i>Treasurer</i> .....	Jeanne McEwen
Helen McHargue	..... <i>Recording Secretary</i> .....	Imogene Boyle
John Maggio	..... <i>Sergeant-at-Arms</i> .....	John Maggio

The Manual Art Society was first organized in 1897 with Miss Anna Gilday as the adviser. Some important members of the club at that time were Carl Bryant, builder of the Bryant Building, and Miss Cornelia Harzfeld, sister to the manager of the Harzfeld's Parisian. After a few years the club was disbanded, but was re-organized in 1919 under the supervision of Miss Brian and Miss Cox of the Art Department, and is now an active organization in the school.

The colors of this society are white, red and black, symbolic of purity, courage and dignity. This society is to create and help those interested in art. To become a member of this society, one must have had a year of art and received a grade of S or E, and also have a general average of M.

This year some of the members have painted wooden buttons, and bracelets.



### BURYTONIAN LITERARY CLUB

TOP ROW: Cary McCullough; Richard Fergus; Angelo Isariotis; Lois Jenkins; Mavoreen Wagner; Zula Mae Crowder; Glenor Kelsey.  
 SECOND ROW: Vernon Fernandes; Mildred DeLong; Vera Lee Bosley; Louise DeLong; Rosemary Lynn; Elnora Hale.  
 BOTTOM ROW: Audrey Barker; Mary Catherine Burke; Gwendolyn McCanon; India Stevens; Esther Feinberg; Miss Hannah Bury.

FIRST TERM	OFFICERS	SECOND TERM
Lois Jenkins .....	<i>President</i> .....	Vernon Fernandes
India Stevens .....	<i>Vice-President</i> .....	M. Catherine Burke
Rosemary Lynn .....	<i>Secretary</i> .....	Esther Feinberg
M. Catherine Burke .....	<i>Manualite Reporter</i> .....	Gwendolyn McCanon
Mildred DeLong .....	<i>Critic</i> .....	India Stevens
Audrey Barker .....	<i>Historian</i> .....	Audrey Barker
Miss Bury .....	<i>Adviser</i> .....	Miss Bury

The Burytonian Literary Club originated in 1930 under the leadership of Miss Bury. The purpose of the club is to promote interest in literature and to arouse a friendly social feeling among classmates.

They presented a play this fall entitled, "The First Thanksgiving," by Miss Agnes Walker, who is a friend of the organization.

The Club deeply mourned the death of one of their benefactors, Thomas Paine, who has been associated with the club in the past.

Many interesting programs were presented, and on many of the programs fine original work was displayed.

The periodical of the club is, "Seeds of Literature," a semi-annual book in which the most prized poems, stories, and essays written in Miss Bury's classes are kept. The following Burytonians contributed to Volume III, Number 1: Cary McCullough, Rosemary Lynn, Zula Mae Crowder, Edna May Heaton, Richard Fergus, Mary Catherine Burke, Vernon Fernandes, Gwendolyn McCanon, and Esther Feinberg.

Two outstanding Burytonians of '35-'36 are Vernon Fernandes, who was chosen as the "Best Boy Student" and Elnora Hale, who was chosen the "Best Girl Orator" on the Junior Ballot. Audrey Barker, and Mary Catherine Burke were selected for the Nautilus Staff this year.

# N A U T I L U S



## MANUAL FORENSIC AND DRAMATIC LEAGUE

TOP ROW: Richard Dinus; Pat Gunta; Harold Lunn; Donald Drinkard; Lee Birdsong; Albert Yoos; Charles Scott; Elmo Hargrave; Bernard Gershon.  
 THIRD ROW: Esther Feinberg; India Stevens; Eileen Leach; Mickey Russo; Mickey Stivaletti; Josephine DeGrado; Jane Bailey; Billy Petty.  
 SECOND ROW: Joe Stolov; Minnie Krevitzky; Jack Sussman; Angelo Isariotis; Jack Davis; Elnora Hale; Lora Mae Clark; Marian Doehler.  
 BOTTOM ROW: Bessie Krevitzky; Ruby Stolov; Reva Aronson; Elton Ballard; Mr. C. C. Fairchild; Cleo Stolberg; Lee Collins; Laura Weant.

FIRST TERM	OFFICERS	SECOND TERM
Tom Couser .....	<i>President</i> .....	Cleo Stolberg
Cleo Stolberg .....	<i>Vice-President</i> .....	Lee Collins
Reva Aronson .....	<i>Secretary</i> .....	Ruby Stolov
Richard Dinus .....	<i>Treasurer</i> .....	Tom Couser
Elton Ballard .....	<i>Sergeant-at-Arms</i> .....	Joe Stolov

The Manual Forensic and Dramatic League, better known as the M. F. D. L., was organized primarily to encourage and foster the interest in dramatics and public speaking. Each meeting is devoted to interesting programs, in which practice is given on extemporaneous topics, orations, and declamations. Each meeting is supervised by parliamentary law. This society has enjoyed many interesting events, and enjoyed contests throughout the year. Among these are—the Freshman-Sophomore orations, won by Bob Fairchild.

The oratorical contest held for girls was won by Bessie Krevitzky. The boys' oratorical contest resulted in a tie between Bernard Gershon and James Wilhoit. It will be impossible to give the decisions on the extemporaneous and declamatory contests as the Nautilus goes to press before these decisions are rendered.

The M. F. D. L. awards medals to the winners during a special assembly.

The outstanding social event of the year is the M. F. D. L. banquet held at the Y. M. C. A. each year. An after dinner speech contest is held in which several members give humorous speeches, the winner receiving the prize.

An unusually successful season consisting of many contests in which the competition was usually close, was enjoyed by all the members.





**DUCK CLUB**

TOP ROW: Mary Sue Moffatt; Imogene Shafer; Roberta Steele; Betty Bird; Florene Jones; Vivian Moulds; Emma Johnson; Maxine Adams; Opal Hammond; Helen McHargue; Mary Benizio; Ruth Smith; Dorothy Goshorn; Ann Mangiaracina.

SECOND ROW: Virginia Voss; Virginia King; Ethel Blankinship; Audrey Barker; Jeanne Woods; Vera Richards; Mildred DeLong; Irene Hulet; Phyllis Trammell; Louise DeLong; Jackie Keen; Mary Ellen McKeehan; Helen Nicholls; Helen Johnson; Florence Etiopia; Genevieve Gillotti.

BOTTOM ROW: Norma Crook; Jolante Dannenberg; Elenora Hile; Marietta Warner; Mary Travis; Gladys Loney; Vera Lee Bosley; Mary Kennedy; Gwendolyn McCanon; Edna Farnsworth; Irene DeLong; Virginia Standiford; Agnes Bay; Cecelia Hughes.

This year a swimming organization, "The Duck Club," was organized of the Junior and Senior life savers and girls who have done outstanding work in swimming. This organization meets the third Wednesday in each month. Novelty aquatic stunts and competitive water sports are planned each meeting by the president, Dorothy Goshorn.

Most of the members of the "Duck Club" have been in life saving classes. We are unusually proud of the many girls who passed their Junior and Senior life saving tests, which require a great deal of work, with high honors. Senior life savers are: Agnes Bay, Dorothy Goshorn, Helen Johnson, Cecelia Hughes, Helen Nicholls, Genevieve Gillotti, Ann Mangiaracina, and Florence Etiopia. Irene DeLong passed Junior life saving. Mary Kennedy, Frances Wiebe, Norma Crook, Edna Farnsworth, Gwendolyn McCanon, and Elenora Hile requalified. Miss Laura B. French assisted by Dr. Helen Perkins instructed this year's life saving class.

The personnel of the "Duck Club" is indeed talented in aquatic sports. Helen Johnson does beautiful work in all kinds of aquatic activities. Vera Lee Bosley is quite accomplished in fancy diving. Opal Whittle is one of our best swimmers for distance. Helen Nicholls has developed a nice free style in swimming. Dorothy Goshorn, our president, is a good all around swimmer.

Each member of the "Duck Club" wears a small white duck embroidered in red as a membership insignia. All of the members are exceedingly proud of this newly organized club.

# N A U T I L U S



## ORCHESTRA MEMBERS

Pat Gunta, *first violin*; Leo Behrens, *first violin*; Melba Guthals, *first violin*; Gerald Baysinger, *first trumpet*; Orval Terry, *first trumpet*; Carl Saladino, *second trumpet*; Bert McGuirk, *viola*; Eugene Millard, *second violin*; Gwendolyn McCannon, *second violin*; Anthony Novello, *cello*; Sidney Miller, *flute*; Vito Belfonte, *saxophone*; Eugene DiBella, *drums*; Tom McHargue, *French horn*; Pauline Lewis, *French horn*; Marion Lohmeier, *second violin*; Theresa Salabino, *second violin*; Bliss Roelofsz, *bass violin*; Jimmie Tucker, *tuba*; Rae Dockins, *accordion*; Clark Doty, *trombone*; Mickey Stivaletti, *piano*; Mr. Frederick Curth, *director*.

## ORCHESTRA

Our orchestra, under the direction of Frederick J. Curth, has developed into a fine, musical group.

The orchestra has played for the school plays.

As this book is going to press, several programs are being prepared; especially for the Music Concert in Spring, Class Day, and Commencement Exercises.

The All-City Symphony Orchestra, under the direction of Mr. Keinan of Westport, has Pat Gunta, who plays first violin, as Manual's representative.



## MIXER ORCHESTRA MEMBERS

Jimmie Tucker, *bass violin*; Leo Behrens, *first violin*; Pat Gunta, *first violin, director*; Vito Belonte, *saxophone*; Bert McGuirk, *guitar*; Eugene Di Bella, Mickey Stivaletti, *piano*; Clark Doty, *trombone*; Orval Terry, *first trumpet, business manager*; Lee Collins, *second trumpet*.

## MIXER ORCHESTRA

Our dance orchestra, directed by Pat Gunta, has been playing for several mixers throughout the year, with the co-operation of several other members of the orchestra. This orchestra plays splendidly, and their every effort is fully appreciated by every member of the whole school. Pat and his orchestra played at the Christmas Mixer, Leap Year Mixer, Valentine Mixer, and the Special Easter Mixer. At different times through the year, the orchestra was assisted by different girls, who sang, much to the approval of everyone attending.

# N A U T I L U S



## PLAY CAST

This year under the direction of Mr. C. C. Fairchild, the dramatic department presented as its fall play, Booth Tarkington's three-act comedy of youth, love, and summertime, "Seventeen," which was presented in the school auditorium December 13. Lee Collins as Willie Baxter, a love-sick high school boy, and Bessie Krevitzky as Lo'la Pratt, a baby-talk lady who aroused much jealousy among the boys, portrayed the leading roles.

The spring play, "The Heavenly Twins" was presented as an assembly program. Jack Davis and Bob Fairchild portrayed the twins with much ease. The supporting cast: Marion Doehler, Cecelia Hughes, Minnie Krevitzky, Lorraine Larson, Ruth Houser, Bernard Gershon, Howard Draffen, India Stevens, Betty Mundon, Ruby Stolov, Marjorie Sherard, Reva Aronson, Marguerite Norris, Marjorie Sheppard, Laura Lang, Inez Griggs, June Shepard, Deana Dumas, and Norma Crook.

### OUTSTANDING DRAMATISTS:

BESSIE KREVITZKY	LORRAINE LARSON	LEE COLLINS	JACK DAVIS
JUANITA MILLNER	VIOLA HALL	F. M. GIBSON	DONALD DRINKARD

## SEVENTEEN

### *Cast of Characters*

Willie Baxter .....	Lee Collins
Johnnie Watson .....	Bob Fairchild
Mr. Baxter .....	F. M. Gibson
Joe Bullit .....	Elton Ballard
George Cropper .....	Howard Draffen
Genesis .....	Donald Drinkard
Mr. Parcher .....	Tom Couser
Wallie Banks .....	Donald Lawson
Lola Pratt .....	Bessie Krevitzky
Jane Baxter .....	Juanita Millner
May Parcher .....	Dorothy Patton
Mrs. Baxter .....	Laura Weant
Ethel Booke .....	Viola Hall
Mary Brooks .....	Phyllis Trammell
Mrs. Parcher .....	Cleo Stolberg
Dancers: Richard Ferris, Mickey Russo, Ruby Stolov, Richard Dinus, Reva Aronson, and Albert Yoos.	

# N A U T I L U S

---



## DEBATE TEAM

TOP ROW: Elton Ballard; Reva Aronson; Lorraine Larson; Jack Davis; Ivaruth Brotherton; James Wilhott; Phyllis Trammell; Marian Doehler; Lee Collins.  
BOTTOM ROW: Bernard Gershon; Thomas Couser; Cleo Stolberg; Mr. C. C. Fairchild; Laura Belle Weant; Robert Fairchild.

A very interesting and exciting year was spent in debating with various high schools. We debated with Central, Paseo, Southwest, Westport, Rockhurst, St. Teresa's Academy, William Chrisman of Independence, Wyandotte of Kansas City, Kansas, and Parkville of Parkville, Missouri. The question for debate was "Resolved that the several states should enact legislation providing for a system of complete medical service available to all citizens at public expense."

The debate with Paseo was held before the Paseo assembly and proved to be most exciting. Our team debated before several Central classes, whereas other debates were held after school hours. Decisions were not made on any debates.

Lee Collins represented Manual at East High School in the Northeast Kansas City Division of the State Oratorical Contest, sponsored by the American Legion. The title of his oration was, "The Constitution, the Guardian of Human Rights."

### PRINCIPAL DEBATERS WERE:

#### *Affirmative*

Laura Weant, Captain  
Bernard Gershon  
Tom Couser  
Phyllis Trammell

#### *Negative*

Cleo Stolberg, Captain  
Bob Fairchild  
Lee Collins  
Iva Ruth Brotherton

*Fifty-Seven*

# N A U T I L U S

---



## BOYS' "M" CLUB

TOP ROW: Earl Plaskett; Paul Zugg; Don Easter; Harry Martin; Joe Cirrincione; Jack Northrup; Roy Johnson.  
SECOND ROW: Victor Lerner; Anthony Barelli; Pete Tarantino; Leo Hayde; Delbert Overton; Vito Belfonte; Edwin Brown.  
BOTTOM ROW: Lamar Sizemore; Harold Lunn; Jimmie Milam; Coach John W. Laury; Charles Lawson; Carlo Cavaleri; Gene Leach.

The purpose of the Boys' "M" Club is to promote good fellowship and sportsmanlike interest between athletes of different sports. Founded when Mr. Harvey Selvidge was athletic director here, it has been carried on every year since then. The requirement for admittance into this club is the earning of a Varsity letter in either football, basketball, track, tennis, or golf. The adviser is the coach or athletic director of the school. The proceedings are carried on by the acknowledged legal form, by parliamentary law. No regular times are set for the meetings, but all notices are posted. The year is usually climaxed with a joint-picnic with the Girls' "M" Club.



GIRLS' "M" CLUB

TOP ROW: Myrtle Fulton; Juanita Millner; Florene Jones; Maxine Adams; Marietta Warner; Dorothy Goshorn; Evelyn Boutross; Elsie Wasik; Kathryn Hayes; Gwendolyn McCanon; Audrey Barker; Violet Foster; Ella May Nichols; Jane Dameron; Wilma DeLong.

THIRD ROW: Jolante Dannenberg; Opal Whittle; Ann Mangiaracina; Genevieve Gillotti; Florence Etiopia; Beatrice Lafferty; Paulanna Peters; Leta Liggett; Helen Lohmer; Frances Wiebe; Marguarite Scimeca; Rose Sapitsky; Edna Farnsworth.

SECOND ROW: Louise DeLong; Ruth Smith; Jean Solo; Dixie Miles; Norma Crook; Elenora Hille; Mildred DeLong; Vera Lee Bosley; Glenor Kelsey; Carol Wallace; Jeanette Stasi; Reina Valdiviez; Mary Kennedy; Dorothy Farrar; Betty Bird.

BOTTOM ROW: Agnes Bay; Edith Studna; Virginia Klug; Phyllis Trammell; Helen Woodard; Dr. Helen Perkins; Helen Nicholls; Helen Johnson; Cecelia Hughes; Elva Larson; Mary Benizio.

FIRST TERM	OFFICERS	SECOND TERM
Helen Woodard	<i>President</i>	Helen Nicholls
Phyllis Trammell	<i>Vice-President</i>	Helen Johnson
Agnes Bay	<i>Secretary</i>	Cecelia Hughes
Edith Studna	<i>Treasurer</i>	Roberta Steele
Adviser		Dr. H. Perkins

The Girls' "M" Club has been overflowing with energy during the past year, as is shown in its many activities. The most important, and most successful event of the year was the program given March 13 in the Assembly called "The 'M' Club Amateur Hour." Every girl in the club participated in some small way even if only to help sing "Rhythm in my Nursery Rhymes." Cecelia Hughes was the "Guest Artist"; however, the "gong" was struck when Agnes Bay tried to sing.

At the bi-weekly meetings the girls held interesting programs, especially at the initiations. Dr. Perkins heartily approved of the purchasing of pins for an organization called "Girls' Athletic Association." The annual swimming meet was held with many splashes and screams of delight. Everyone enjoyed herself in Manual's "Old Swimmin' Hole." At the annual picnic participated in jointly by the Boys' and Girls' "M" Club, the boys and girls had a good time despite the immense amount of food consumed.

Thus has the year been completely filled for these ambitious "M" Club Girls.

# N A U T I L U S



## MANUALITE STAFF

TOP ROW: Jimmie Tucker; John Hembree; Joseph Tornabene; Vincent Elliott; Mike Zuppardo; Walter Clark; Bill Cohen; Bill Lucas; Donald Bailey.  
 THIRD ROW: John Mace; Gladys Loney; Roberta Steele; Phyllis Trammell; Mary Kennedy; Marguerite Scimeca; Bernard Rawlings; Joe Stolov.  
 SECOND ROW: LaMar Sizemore; Mary Travis; Lorraine Tyndall; Angeline Copulos; Ruby Stolov; Vera Crawley; June Shepard; Edward Perkins.  
 BOTTOM ROW: Phyllis Weaver; Marjorie Sherard; Miss Helen McDonna; Mr. Charles A. Barrett; Carol Wallace; Helen Stebbins; Eva Templer.

### EDITORIAL STAFF

#### INSTRUCTORS

Miss Helen McDonna.....*Manualite Adviser*  
 Mr. C. A. Barrett.....*Newswriting, Printing*

#### FRONT PAGE

FIRST TERM	SECOND TERM
Gladys Loney..... <i>Assignment Editor</i>	Helen Stebbins
Bernard Rawlings..... <i>Make-up Editor</i>	Carol Wallace
Carol Wallace	Eva Templer
Deana Dumas	Walter Clark
Vera Crawley	
Phyllis Weaver	

#### EDITORIAL PAGE

Kathleen Broderick	Angeline Copulos
Lorraine Tyndall	Marjorie Shepard
Annie Castleberry	Mary Travis
Ruth Houser	John Mace

#### ACTIVITY PAGE

Helen Lewis	Deana Dumas
Bill Lucas	Thelma Vogtman
Helen Lohmer	Dallas Kier
Violet Pittier	Joseph Tornabene

#### SPORTS PAGE

Viola Hall..... <i>Feature Editor</i>	
James Tucker..... <i>R. O. T. C. Editor</i>	
Vincent Vaccaro..... <i>Art Editor</i>	Vincent Elliott
Phyllis Trammell	Phyllis Trammell
Roberta Steele	John Mace
Donald Bailey	La Mar Sizemore
	Mike Zuppardo
	Marguerita Scimeca



# N A U T I L U S



## NEWSWRITERS

TOP ROW: Clifford Kelley; Ellsworth Easter; Robert Brown; Preston Leavitt; James Palmarine; Max Himmel; Warren Ray.  
 SECOND ROW: Kathleen Doran; Helen Maggard; Juanita Sollars; Rita Webb; Milton Crawley; Joe Stolov; Helen Townsend.  
 BOTTOM ROW: Reina Valdiviez; Madeline Pepper; Miss Helen McDonna; Mr. Charles A. Barrett; Viola Lusher; Jack Sussman; Arleigh Lafield.

### *First Term*

Walter Clark	LaMar Sizemore	Angeline Copulos	Helen Stebbins
Dallas Kiew	Joseph Tornabene	Marguerite Scimeca	Eva Templer
John Mace	Mike Zupparde	Marjorie Shepard	Mary Travis
Edward Perkins			Thelma Vogtman

### *Second Term*

Lawrence Bleier	Preston Leavitt	Jack Sussman	Madeline Pepper
Robert Brown	James Palmarine	Frank Werkowitz	Juanita Sollars
Milton Crawley	Robert Peebles	Kathleen Doran	Helen Townsend
Ellsworth Easter	Warren Ray	Arleigh Lafield	Reina Valdiviez
Max Himmel	Victor Rendina	Viola Lusher	Rita Webb
Clifford Kelly	Joe Stolov	Helen Maggard	

## Manualite Staff- Continued

### BUSINESS STAFF

Joe Stolov..... <i>Business Manager</i>	John Hembree
Carol Wallace..... <i>Assistant Business Manager</i>	
Vera Crawley..... <i>Advertising Manager</i>	Viola Lusher
Kathleen Broderick	Madeline Pepper
	Eva Templer
	Phyllis Trammell
	Milton Crawley
	Edward Perkins

### INSIDE CIRCULATION

Mary Kennedy	Mary Kennedy
Carol Wallace	Phyllis Weaver
Annie Castleberry	Lawrence Bleier
	Bernard Rawlings

### OUTSIDE CIRCULATION

Donald Bailey	Walter Clark
Sam Klein	Dallas Kier
Bernard Rawlings	John Mace
	La Mar Sizemore
	Edward Perkins
	Head Proof Reader.....
	Staff Typists.....
	Helen Lewis
	June Shepard
	Roberta Steele

*Sixty-One*



### A CAPPELLA CHOIR

TOP ROW: Zula Mae Crowder; Elizabeth Grunden; Ruth Lyle; Lorraine Tyndall; Mildred DeLong; Gwendolyn Soxman; Dorothy Patton; Florene Jones; Esther Feinberg; Rita Sherry; Eva Templer; Ann Mangiaracina.

THIRD ROW: June Shepard; Irene Thomas; Imogene Shafer; Elizabeth Carter; Viola Lusher; Paula Wagner; Helen Townsend; Rose Bonjoe; Louise DeLong; Lucille Standiford; Emma Kolar; Carolyn Mayer.

SECOND ROW: Rosemary Lynn; Mary Sue Moffatt; Angelo Isariotis; Harry Woodcock; Hector List; Lee Birdsong; Charles Pierce; Myrtle Fulton; Betty Sanders; Reina Valdiviez.

BOTTOM ROW: Pauline Lewis; Malcolm Richardson; Robert Coulter; Victor Rendina; Earl Plaskett; Daniel Williams; Bill Cohen; Annie Castleberry.

This year the Manual Music Department is composed of three classes, the Senior and Junior A Cappella Choirs, and the beginning chorus class. The first program of the year, given in October by the two choirs, was very successful. The Christmas program, the most impressive of many years was given on a stage beautifully decorated with huge candles and evergreen trees, a rose-window serving as a background. The choir members were attired in black and white choir robes, and the services started with a solemn processional marching to the strains of "Adeste Fideles."

In January the chorus class presented a program, and they proved to be so far advanced that they were asked to participate in the Music Frolic of April seventeenth. In this gala entertainment the chorus sang many popular and semi-classical numbers. There were also many solos, trios, and quartets, and several graceful ballet dances, and lively tap-dances.

A picked group from the A Cappella Choirs, along with similar groups from other schools, sang two songs in the All-City Music Festival in the new Municipal Auditorium.

# N A U T I L U S



## SCRIBBLERS' CLUB

TOP ROW: Mickey Russo; Maydelle Vogel; Erma Martin; Violet Foster; Roberta Steele; Helen Johnson; Marie Wasik; Bertha Arenson; Myrtle Brandstetter.  
 THIRD ROW: Florence Etiopia; Alice Russell; Mayme Carrell; Helen Mason; Josephine DeGrado; Edith Studna; Alice Stein; Elsie Hixson.  
 SECOND ROW: Eileen Leach; Mollie Dreiseszun; Lucy Arnone; Sarah Bratt; Ruby Stolov; Lillian Elliott; Winona Williams; Marjorie Shelton.  
 BOTTOM ROW: Fred Wallace; Maxine Tidrick; Cleo Stolberg; Miss Zula Chase; Jean Solo; Agnes Bay; Billy Petty.

FIRST TERM	OFFICERS	SECOND TERM
Billy Petty .....	<i>President</i> .....	Jean Solo
Roberta Steele .....	<i>Vice-President</i> .....	Cleo Stolberg
Elsie Hixson .....	<i>Secretary</i> .....	Agnes Bay
Cleo Stolberg .....	<i>Treasurer</i> .....	Marjorie Shelton
Fred Wallace .....	<i>Sergeant-at-Arms</i> .....	Billy Petty
Erma Martin .....	<i>Critic-Reporter</i> .....	Maxine Tidrick

Hurrah! The Scribblers have completed a successful year of writing advanced shorthand. A few can take notes at the rate of 120 words a minute on new material. They feel quite proud also of their successful programs which were interesting as well as educational. At different programs the students reported on famous men and women, and on State Flowers. Some told of Manners and Decorum, while others answered Political Questions, and still others related Current Events. "How to Get a Husband" was also an interesting topic.

The Scribblers' Club is composed of many talented students who really can do things, for instance; Jean Solo can sing blues songs like Kate Smith, Billy Petty can sing and speak, Erma Martin gives readings like a professional. Ruby Stolov is good at singing, dancing, and speaking; Lillian Elliott and Maydelle Vogel really should know their manners after reporting on the booklet "How'm I Doin'." These seniors will leave Manual well provided with knowledge on many subjects.

At one program members of the class reported on different vocations and professions, covering the subjects aviation, court reporting, beauty operating, switchboard operating, and teaching.

The class sent to Kentucky for black and white club pins, on which the words "Scribblers Club" were written.

The Scribblers and the sixth hour, first year shorthand class held a brief form contest after school hours. The Scribblers were victorious.

*Sixty-Three*



**GIRL RESERVES AND BOYS' HIGH SCHOOL CLUB**

TOP ROW: Ruby Stolov; Ruth Steinfeld; Lucerne Hare; Clara DeGrado; Maydelle Vogel; Mickey Russo; Mickey Stivaletti; Opal Lairson; Virginia Fulton; Marjorie Shelton; Wilma Winkler; Norma Crook; Helen Nicholls; Helen McHargue.  
 THIRD ROW: Miss Anna E. Hughes; Louise Rennau; Mary Benizio; Edna Farnsworth; Josephine DeGrado; Dorothy Goshorn; India Stevens; Romanza Fairman; Esther Feinberg; Reva Aronson; Evelyn Boutross; Frances Wiebe.  
 SECOND ROW: Miss Ruth E. Hawkins; Angeline Copulos; Elnora Hale; Charles Scott; Jack Davis; Orval Terry; Harold Lunn; Pete Tarantino; Joe Cirrincione; James Hudson; Neal Edwards.  
 BOTTOM ROW: Mr. Angus F. Barry; Billy Petty; Bernard Rawlings; Clark Doty; Tom Couser; Bert McGuirk; Norman Harris; Anthony Novello; Mr. J. A. Lstrom.

**GIRL RESERVES**

**OFFICERS**

Reva Aronson ..... *President*  
 Evelyn Boutross ..... *Vice-President*  
 Angeline Copulos ..... *Secretary*  
 Ruby Stolov ..... *Treasurer*

The Girl Reserves is an organization open to all girls, for the purpose of developing high ideals and friendly spirit. Their motto is "To Face Life Squarely" and their slogan, "To Find and Give the Best."

The first big event in the Girl Reserve year was a party given early in October for the purpose of acquainting the new girls with the organization. Perhaps the most impressive ceremony of the year was the Girl Reserve initiation. It was then that the president, Reva Aronson presented the new Girl Reserves with their membership buttons, and it was then that the Girl Reserve code was repeated.

During the year many interesting meetings were held with the Hi-Y. Manual Girl Reserves are the only ones to have had their meetings with the boys' club. Needless to say, it was a delightful experiment.

Wheatly Hospital received Easter rabbits made by the club and the children there were greatly pleased.

The Girl Reserve year came to a close with a beautiful installation and the Hi-Y-G. R. Picnic.

BOYS' HIGH SCHOOL CLUB

FIRST TERM	OFFICERS	SECOND TERM
Tom Couser .....	<i>President</i> .....	Jack Davis
Jack Davis .....	<i>Secretary-Treasurer</i> .....	Bert McGuirk
Orval Terry .....	<i>Chaplain</i> .....	Orval Terry

The Boys' Hi-Y, another of the many branches of the Y. M. C. A., began in 1889 in Chapman, Kansas. At that time the organization was called the "High School Y. M. C. A." But since 1910, it has been called the "Boys' Hi-Y Club." Manual can claim one of the first Hi-Y Clubs in Kansas City. Now there are branches of this club in fifteen grade schools, in six Junior Highs, and in nine Senior High Schools in Kansas City. In the beginning Manual, Northeast, Central, and Westport met once a week at the Y. M. C. A. They served dinners and gave interesting programs.

The Hi-Y purpose is to spread the spirit of Christian character throughout the school. Their slogan is, "A Clean Standard in Speech, Sports, Habits and Scholarship."

WHAT THE CRYSTAL REVEALS

- Opal Lairson is now a popular Metropolitan Opera Star.
- Mickey Russo is a kind-hearted nurse.
- John Maggio is a successful farmer.
- Betty Mundon is a dancing instructor at Wolfe's Dancing Academy.
- Reina Valdiviez is teaching shorthand at M. T. H. S.
- James Hudson is a cartoonist for the Associated Press.
- Minnie Krevitzky is a stand-in for Bessie, who is now a famous actress.
- Jimmie Milam is the tallest man in the state of Missouri.
- Dorothy Latimer is the first woman editor of the Kansas City Star.
- Victor Lerner is now attaining many tennis trophies.
- Mollie Dreiseszun is now competing with Paris costume designers.
- Tom Benenate has joined the ranks of the unemployed.
- Maxine Tidrick still pounds "Ye Olde Typewriter."
- Howard Draffen is president of the Stage Manager's Union.
- Pat Gunta has just taken the place of Rubinoff.

BENTONIAN BALLOT

Person Who Has Done Most For Bentonians .....	Richard Turner
Most Popular Girl .....	Cleo Stolberg
Most Popular Boy .....	Tom Couser
Best Girl Student .....	Phyllis Trammell
Best Boy Student .....	Billy Petty
Belle Brummel .....	Lorraine Larson
Beau Brummel .....	LaMar Sizemore
Most Polite Person .....	Jeanne McEwen
Most Loyal Person .....	Ruth Houser
Biggest Bluffer .....	Donald Drinkard

# N A U T I L U S

---

## MANUAL FORENSIC AND DRAMATIC LEAGUE BALLOT

Person Who Has Done Most For M. F. D. L.	Cleo Stolberg
Most Popular Girl	Reva Aronson
Most Popular Boy	Tom Couser
Best Girl Student	Marian Doehler
Best Boy Student	Billy Petty
Belle Brummel	Esther Feinberg
Beau Brummel	LaMar Sizemore
Best Girl Orator	Laura Belle Weant
Best Boy Orator	Lee Collins
Most Polite Person	Bob Fairchild

## MANUAL ART SOCIETY BALLOT

Best Girl Artist	Marie Wasik
Best Boy Artist	Jack Shipley
Belle Brummel	Mollie Dreiseszun
Beau Brummel	Norman Harris
Cutest	Alice Sheppard
Quietest	Dorothy Sollars
Most Dependable	Lucy Arnone
Most Talkative	Frank Sorrentino
Most Dignified	Helen Lagas
Biggest Bluffer	John Maggio

## GIRLS' "M" CLUB BALLOT

Miss Olympic	Helen Nicholls
Miss Sportsmanship	Agnes Bay
Miss "M" Club	Phyllis Trammell
Best Volley Ball Player	Mary Benizio
Best Basketball Player	Ann Mangiaricina
Best Baseball Player	Florence Etiopia
Best Swimmer	Helen Johnson
Tries Hardest	Leta Liggett
Mascot	Dixie Miles
Peppiest	Virginia King

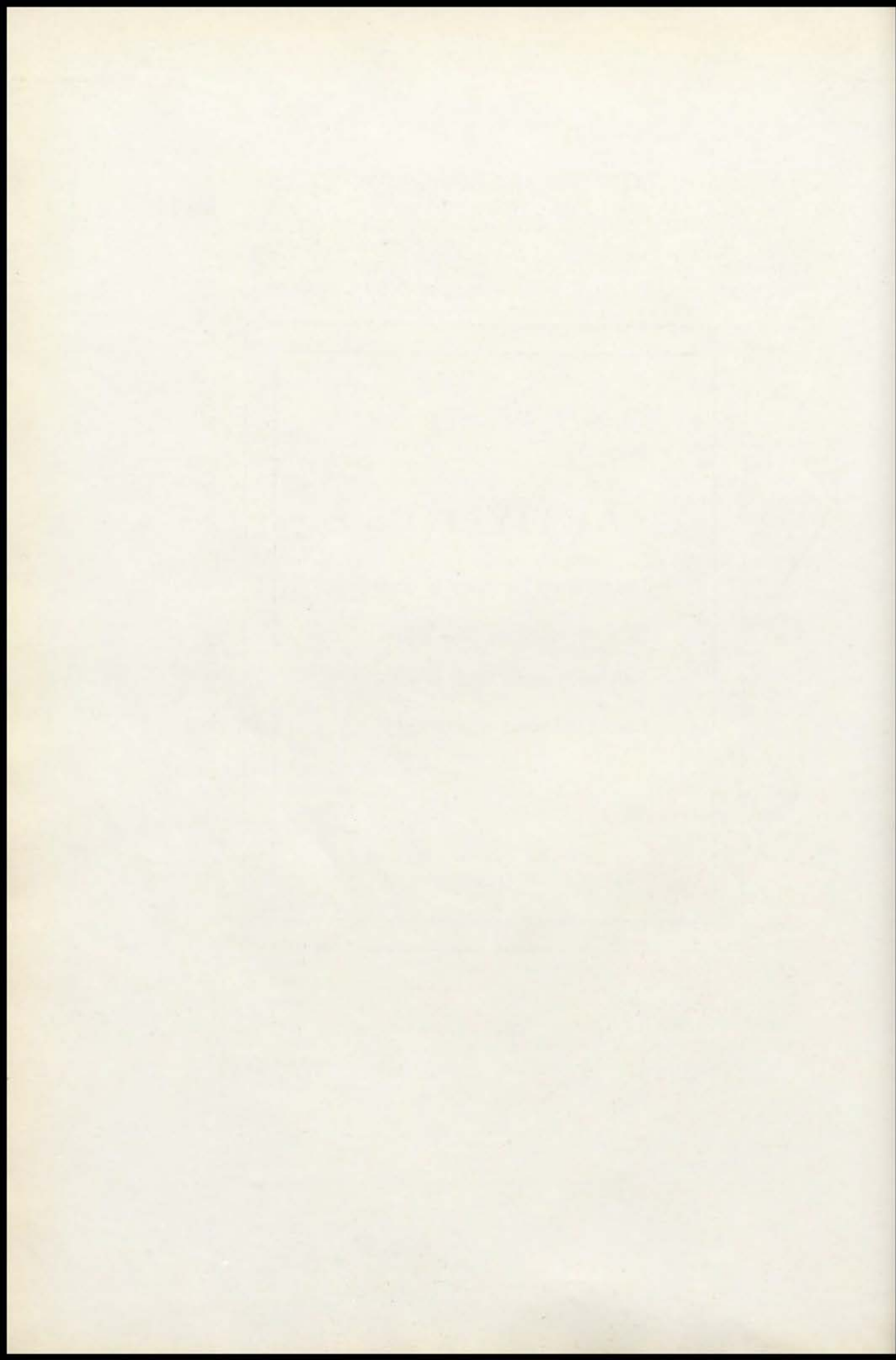
## ATHENA BALLOT

Pallas Athene	Agnes Bay
Brainiest	Jacqueline Bayan
Wittiest	India Stevens
Prettiest	Cecelia Hughes
Neatest	Jean Solo
Sweetest	Rachael Appleton
Politest	Laura Belle Weant
Happiest	Mary Alice Arnold
Peppiest	Reva Aronson
Gabbiest	Maxine Tidrick

## ACTIVITIES

Let us then be up and doing,  
With a heart for any fate,  
Still achieving, still pursuing,  
Learn to labor and to wait.

—Longfellow





# NAUTILUS



## THE 1936 OFFICERS STAFF

TOP ROW: Sergeant Faust; Albert Yoos; James Tucker; Richard Turner.  
BOTTOM ROW: Elton Ballard; Elmo Hargrave; John Lee Smitherman.

*Sixty-Nine*

1936

# N A U T I L U S



## R. O. T. C.

### FIRST PLATOON

TOP ROW: Homer Jones; Garland Rucker; Robert Coulter; James Coffey; Richard Ferris; Ray Smith; Lee Birdsong; James Wilhoit; Charles Ellis.  
THIRD ROW: Frank Moser; Gerald Leas; Carl Saladino; Bernard Rawlings; Frank Crandell; Don Lawson; Fred Lewis.  
SECOND ROW: Fred Jones; Gordon Roelofsz; Lee Foster; Eugene Millard; Warren Ray; Howard Draffen, Harry Hogue.  
BOTTOM ROW: Lee Collins; Lieut. Tucker; Capt. Smitherman; Major Hargrave; Lieut. Turner; William Wood; Norman Cox.

## R. O. T. C. CIRCUS

At the fourteenth annual R. O. T. C. Circus, held in the new Municipal Auditorium on April 24th, Manual's battalion presented a marching calisthenics drill and "jump-stick" relay race.

The calisthenics were performed while the unit marched in a circle, and the spectacle of forty white-shirted cadets moving with perfect rhythm and alignment throughout the exercise drew much complimentary comment from the audience.

The relay race added a touch of comedy to the exhibition, with several participants making wild slides across the smooth arena floor in pursuit of the elusive batons.

An honored guest for the occasion was Major General Frank C. Bolles, commanding Seventh Corps Area.

The 1936 Circus was significant in that it was the first event in which high school students participated to take place in the Auditorium.



### R. O. T. C.

#### SECOND PLATOON

TOP ROW: Carlyle Smith; Ralph Parker; Roy Stovall; Angelo Isariotis; Robert Wonderly; Lawrence Barnett.  
 THIRD ROW: Marion Cleveland; Jr. Watson; Victor Vicksell; David Pfefer; Bob Fairchild; Elbert Rice.  
 SECOND ROW: Gerald Baysinger; Warren Shannon; Milton Crawley; Richard Dinus; Raymond L. Barton.  
 BOTTOM ROW: William Wood; Major Hargrave; Captain Ballard; Lieut. Yoos.

### R. O. T. C. FIELD MEET

Manual's depleted battalion marched away from the scene of the annual field day, May 15, with few visible honors in the way of competition awards, but with the satisfaction of knowing that their unit showed very well indeed in proportion to the small number enrolled.

In squad drill competition, Manual's group failed to place, although judging was close in awarding the decision to Central, who incidentally emerged with the field day cup.

The platoon also was doomed to disappointment, in spite of the fact that they presented an excellent series of maneuvers.

Company drill, as was expected, did not net any points for the battalion. In order to form the complete company, it was necessary to use every cadet enrolled, to fill out the ranks. Cadet Bob Fairchild placed third in the individual awards, bringing Manual their only cup of the day.

Major Elmo Hargrave was presented a regulation army saber as the ranking cadet of the high school. The major is also third in command of the Kansas City regiment.

Cadet Bob Fairchild, Corporal Homer Jones, and Sergeant Raymond Barton received American Legion medals as best first, second, and third year cadets.

Corporal Hubert Gardner was presented a certificate of merit, for his high scores in rifle marksmanship competition.

Sergeant Fred Faust, instructor in military science and tactics at Manual, expressed satisfaction that we should hold our own with schools which outnumber us as much as four to one in R. O. T. C. enrollment.



### JUNIOR-SENIOR BASKETBALL TEAMS

TOP ROW: Ann Mangiaracina; Marietta Warner; Ella May Nichols; Virginia King; Evelyn Boutross; Dorothy Farrar; Florene Jones; Mary Benizio; Helen Johnson; Dorothy Goshorn; Helen McHargue; Erma Martin; Helen Nicholls.  
 THIRD ROW: Dorothy Latimer; Phyllis Trammell; Genevieve Gillotti; Mary Kennedy; Florence Etiopia; Opal Whittle; Edith Studna; Roberta Steele; Cecelia Hughes; Carol Wallace; Violet Foster; Leta Liggett.  
 SECOND ROW: Frances Kinney; Vera Richards; Kathryn Hayes; Frances Wiebe; Elsie Wasik; Vera Lee Bosley; Mildred DeLong; Lucille Standiford; Audrey Barker; Opal Hammond; Edna Farnsworth; Mary Pitoli; Mary Travis.  
 BOTTOM ROW: Rose Sapitsky; Minnie Gulotta; Reina Valdiviez; Jeanette Stasi; Marguerite Selmecca; Irene Hulet; Yvonne Creek; Gwendolyn McCannon; Louise DeLong; Ethel Blankinship; Betty Bird.

### BASKETBALL

Basketball, one of the major sports of the year, proved popular with all the girls, but the freshmen seemed to take the most lively interest and formed the most teams. Basketball ranged from nine court to three court and the season closed in the selection of the most outstanding basketball players of two court basketball. Ann Mangiaracina arranged the tournaments and managed the basketball season this year. Helen Nicholls and Mary Kennedy did excellent work as jump centers. Frances Kinney, one of the outstanding players of the year, plays either guard or forward equally well. Vera Lee Bosley, Ann Mangiaracina, Florence Etiopia, Virginia King, Elsie Wasik, Rose Sapitsky, and Cecelia Hughes, are some outstanding junior and senior players. Clara DeGrado, Mildred Levy, Lois Kincannon, Sylvia Levy, and Gladys LaBella are all excellent players among the new students at Manual.

### BASEBALL

Indoor baseball filled the early spring months with much activity. Florence Etiopia was chosen baseball manager as a reward for her merited baseball playing. Jeanette Stasi, Lucille Standiford, Kathryn Brown, Minnie Gullotta, Elenora Hile, Roberta Steele, Helen Nicholls, and Frances Kinney are all skilled baseball players. A very lively season was enjoyed by all the girls.

### TENNIS

Hand in hand with April and May, marches Mr. Tennis into the Girls' Sports Department. By popular ballot Elva Larson was elected tennis manager. Many sets of tennis were enjoyed by the girls in competitive tennis tournaments.



### FRESHMAN-SOPHOMORE BASKETBALL

TOP ROW: Marjorie Paul; Elenora Hile; Norma Crook; Dixie Miles; Travis Truelove; Ruth Smith; Wilma Winkler.  
 THIRD ROW: Clara DeGrado; Genevieve Sevelle; Lucerene Hare; Evelyn Shepard; Lenora Panzica; Inez Griggs; Betty Jane Sloan.  
 SECOND ROW: Jolante Dannenberg; Mary Ellen McKeehan; Virgie Vance; Mary Sue Moffatt; Marianne Harling; Virginia Voss.  
 BOTTOM ROW: Ann Mangiaracina; Rose Vigliaturo; Mary Lohmer; Letha Shelton; Virginia Standiford; Hazel Martin.

### RHYTHM

This year the seventh hour gym class exhibited acrobatic stunts; beginning with simple forward rolls and ending in various complicated chair stunts. Rhythm exercises were given as a base for the self expression dance which followed. These exercises were held in the gymnasium of Westport Junior.

### GIRLS' SPORTS

A great advancement has been made this year in the field of competitive sports among the girls. Never have so many girls, freshmen, sophomores, juniors, and seniors taken such an active part and interest in after school activities.

### VOLLEYBALL

Giant Volleyball opened the sport season and gave preparation for the regular volleyball which followed. This year regular volleyball has become more complicated and therefore more interesting, with two volleyball serves, the overarm and underarm. We are exceptionally proud of our volleyball team this year, since we are the only high school in the city with a girls' volleyball team strong enough to challenge the boys to a game. The challenge was exchanged several times and the games were very interesting. Elva Larson has proved very capable as a volleyball manager this year. Mary Benizio, Carol Wallace, Jolante Dannenberg, Elva Larson, Clara DeGrado, Dorothy Goshorn, and Dorothy Farrar have done very outstanding work in volleyball.

# N A U T I L U S



## 1935 SQUAD

Each of these players participated in a regular scheduled game during the season and made either a first or second team letter

**FRONT ROW:** Joe Cirriacione, End; Paul Zugg, End; John Maggio, Guard; Eddie Brown, Line Captain and All Star Guard; Pete Tarantino, All Star Center; Harry Martin, Guard-Tackle; Don Easter, Guard-Tackle; Leonard Fergus, End; Roy Johnson, Guard-End.

**BACK ROW:** Coach John Laury; John Fitzpatrick, End; Lawrence Licata, Guard-Center; LaMar Sizemore, Halfback; Vito Belfonte, Halfback; Tommy Tressler, Fullback; Carlo Cavaleri, Quarterback, All-Star; Anthony Barelli, Fullback; Ellsworth Easter, Guard-Tackle; Fred Cross, Guard; Donald Drinkard, Tackle; Harold Lunn, Student Manager; Mr. A. F. Barry, School Manager.

## BASKETBALL SEASON 1935-36

Results of Interscholastic League:

	<i>Won</i>	<i>Lost</i>	<i>Per Cent</i>
Northeast	5	1	.833
Manual	4	2	.666
Westport	4	2	.666
Central	4	2	.666
Paseo	2	4	.333
Southwest	2	4	.333
East	1	5	.166

Results of Total Season:

<i>Date</i>	<i>Manual</i>	<i>Opponents</i>	<i>Scored</i>	<i>Won</i>
Jan. 3	25	Central	30	Central
Jan. 17	23	Westport	14	Manual
Jan. 24	26	East	23	Manual
Feb. 7	19	Argentine	45	Argentine
Feb. 15	28	Paseo	16	Manual
Feb. 22	39	Southwest	9	Manual
Feb. 29	24	Baker Freshmen	16	Manual
Mar. 7	22	Northeast	26	Northeast
	208		179	

# NAUTILUS



## 1935 FOOTBALL SQUAD

TOP ROW: Coach John Laury; Sam Ruben; Everett Tayse; John Fitzpatrick; Lawrence Licata; Anthony Barelli; Ellsworth Easter; Fred Cross; Donald Drinkard; Harold Lunn, Student Manager; Norman Harris; Charles Ventimiglia; A. F. Barry, Manager.  
MIDDLE ROW: Joe Cirrincione; Paul Zugg; John Maggio; Eddie Brown; Pete Tarantino; Harry Martin; Don Easter; Leonard Fergus; Roy Johnson.  
BOTTOM ROW: Otto Powell; Joe Sciara; Pat Ancona; Lawrence Sturm; Gene DiBella; Tony Lucito; Tony Baroni; John McHenry; Albert Richardson.

## 1935 FOOTBALL SEASON

The opening of the 1935 football season was particularly bright with the reporting of five first-team lettermen and ten second-team players who had proved their worth last year. Edwin Brown, John Maggio, Pete Tarantino, Tommy Tressler, and Clarence Sams were the first-string men who showed up at the first practice. Reserves included Carlo Cavaleri, Donavan Easter, Veto Belfonte, Delbert Overton, Paul Zugg, Leonard Fergus, Johnny Ancona, Warren Brown, and Harry Martin. An additional score of fine material increased the outlook for a brilliant season.

Starting against the Alumni and Leavenworth our team, while winning in both games, functioned only in a mediocre fashion. Manual fans were not alarmed at these symptoms, as they are frequently found early in the year.

Our eleven opened the interscholastic league schedule with a well-earned victory over the Central Blue Eagles. Passes from Carlo Cavaleri to Leonard Fergus in the first and last quarters accounted for the scores.

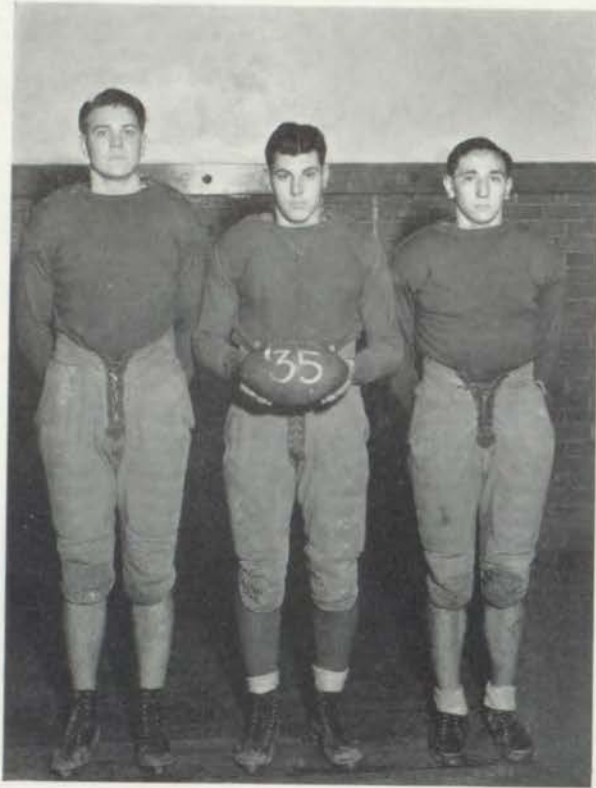
In their second game, against Westport, the Crimson backfield showed its mettle, pushing a heavier Tiger eleven all over the field, and scoring in the final quarter with a 35 yard pass from Cavaleri to Fergus.

Southwest tamed our rising championship hopes for a time with an upset 7-6 victory. Johnny McKee, acting captain of the Indians, was injured fatally in making a tackle during the game.

In probably the most grinding game played to date, the Paseo Pirates held a furiously fighting Manual team to a 6-6 tie. Fergus, pass-grabbing end for the Cardinals, was absent from the line-up because of illness, and our scoring power felt the loss badly.

Ending the season with a record of two games won, three games lost, and one tied, Manual's individual play was yet good enough to entitle three Manual players, Carlo Cavaleri, Edwin Brown, and Pete Tarantino, to a place on the All Star team. Coach John Laury professed to being very pleased with the outcome of the year, and expressed hope that a deficit of marks in the "win" column will show next year's team that teamwork is what brings victory to football teams.

*Seventy-Five*



MANUAL'S ALL-STARS

EDWIN BROWN      CARLO CAVALERI

PETE TARANTINO





### BOYS' BASKETBALL

TOP ROW: Roy Johnson; Charles Lawson; Delbert Overton; Earl Plaskett; Leo Hayde; Jimmie Millam.  
BOTTOM ROW: Mr. Charles Dixon; Joe Cirrincione; Leonard Fergus; Eugene Leach; Carlo Cavaleri; Coach John W. Laury.

### BASKETBALL 1935-36

With a basketball team built around three returning lettermen, Gene Leach, Carlo Cavaleri, and All-Star Joe Cirrincione, Manual "went places" in this year's interscholastic league race.

Although losing the opener to Central, 30-26, Manual came back in following games and piled up victories over Paseo, East, Southwest, and Westport to tie them for first place with the defending champions, Northeast.

In the final game with the Vikings, an inspired Manual kept the midget purple-clad quintet in a daze with an intricate system of defense, and an unsolvable scoring play. Leading with a comfortable score at the half, and with several points still to the good at the opening of the final period, the courageous Northeast team still came to the front to win the game, 26-22, and incidentally the championship.

In reviewing the cage season, no cause for complaint can be found, as our record shows four victories and two defeats in the interscholastic league, and only three losses in the entire season, counting outside games.

*Henry Moore*

MAKER OF

Photographs That Please



Official Photographers

1936 NAUTILUS

Eleventh and McGee

**TIME MARCHES ON AT MANUAL!**

Sept. 4—Hordes of freshmen descend upon our fair school, waving their "Big Chief" tablets and yelling murderously. The dazzling chlorochrous glare boomed the sale of smoked glasses at the corner drug store.

Sept. 6—Four new innocent instructors have been decoyed into our midst. Salutations to Miss Arev Smith, Miss Mildred Wright, Mr. Barry Fulton, and Mr. Shelley Peters.

Sept. 20—FLASH!!! First issue of The Manualite hot off the press, and jammed with news, pictures, and wise cracks. That old scandal-monger, the Copy Cat, still prowls our halls. Beware!

Sept. 23—After many gymnastics, vocal and otherwise, the new gloomchasers (cheerleaders to you) are Jimmie Tucker, Thurman Brittingham, Elton Ballard, and Tom Couser.

Sept. 27—Our student council rolls into motion, piloted by Elmo Hargrave. Sale of football tickets for the coming season is urged.

Sept. 28—YIPPEE!! Our eleven tramples the Central Eagles, and we're off to a flying start. Cavaleri to Fergus is the winning combination.

Oct. 12—Southwest's victory over the Crimson proved bitter because John McKee, Indian backfield star, died from injuries suffered during the game. Southwest, you have our deepest sympathy.

Oct. 15—Jimmie Milam and Victor Lerner show their worth as midget tennis champs when they received the only letters given in that sport this year.

Oct. 26—Paseo manages to hold us down to a 0-0 tie. East and Northeast are next in line.

Nov. 9—The hectic grid season over, we end in fourth place, but Carlo Cavaleri, Pete Tarantino, and Eddie Brown win berths on the All-Star team.

Nov. 29—Usual turkeys, holidays, and groans as a result of the well-known holiday, Thanksgiving.

Nov. 30—In spite of many bloodthirsty threats, R. O. T. C. privates are beaten in their annual grid combat with the officers. Woe is them!

Dec. 1—Four members of the Manualite Staff explore Lawrence, Kansas, although they pretended that their purpose was to attend a journalistic conference, or something. Heh-heh.

Dec. 13—Manual Thespians have their day, or should we say night. The dramatic department presents "Seventeen," and several strange sounds are noted during the performance.

Dec. 19—The A Cappella warbles sweetly at a Christmas assembly, against a background of candles and stained glass windows. Really very impressive.

•

HOWARD W. BARTLOW

*Manual's Florist*

PHONE WESTPORT 7744

3111 TROOST AVE.

•

☆

UNION NATIONAL

BANK

Ninth and Walnut

☆

DOWN LOVER'S LANE

Tony Totta .....	Rita Webb
Delbert Overton .....	Kate Sullard
John Smitherman .....	Vera Crawley
Norman Harris .....	India Stevens
Norman Cox .....	Beverly Cookus
Joe Stolov .....	Rachael Appleton
Harry Robertson .....	Jane Dameron
Donald Drinkard .....	Pauline Lewis
Silas Stephens .....	Mary Ella McKeehan
Melvin Miller .....	Dorothy Patton
Bernard Gershon .....	Bessie Krevitzky
James Hudson .....	Esther Feinberg
Edwin Brown .....	Helen Johnson
Harold Lunn .....	Travis Truelove
LaMar Sizemore .....	Reva Aronson
Elmo Hargrave .....	Gwendolyn Soxman
Fred Wallace .....	Marion Doehler
Bert McGuirk .....	Inez Griggs
Tom Couser .....	Cleo Stolberg
Ivaruth Brotherton.....	Don Easter or any other of a million
James Scott .....	Marguerite Norris
Richard Fergus .....	Rosemary Lynn
Jimmie Bonadonna .....	Carol Wallace

CHAPMAN DAIRY PRODUCTS

FRESH—RICH—PURE

Milk    Cream    Cottage Cheese    Butter  
 Butter Milk    Chocolate Drink  
 Orange Drink

Dec. 31—The ancient and dishonorable Blue Eagles manhandle our basketball team in our first game. Gloomy outlooks.

Jan. 1—We return from the holidays, more or less gladly, and inscribe a brand new set of New Years Resolutions which we will entertain ourselves with breaking for the next twelve months.

Jan. 9—Ah, agony, agony! Exams, needless to say, were responsible for the many cries of despair heard echoing through these dismal halls recently. Why were we ever borned?

Jan. 17—Coach MacMurphey leaves for the University of Iowa, where he will study for his Ph.D. Deane Smith of Independence will take his place.

Jan. 20—Manualites grow happier as Manual trims Southwest and sets the season's high scoring record of 39 points.

Feb. 14—We all have a chance to show our vocal ability at an assembly, where Miss Clausen leads a community chorus and brings several old Manual songs to light.

Feb. 15—Championship hopes are bright, as the Paseo Pirates walk the plank. Northeast won her game, too, and we'll play them soon for first place honors. Here's hoping!

Feb. 16—Our own Rubinoff, Pat Gunta, thrills the great radio audience with his violin. WDAF is the lucky station.

Feb. 22—East falls before the merciless onslaught of our championship headed team.

Mar. 6—Because of his great lung capacity and loud voice, Lee Collins placed first in the Constitutional Orations here. We've got to have our fun, Lee.

Mar. 7—Aw-w-w-w-w!!! After all our hopes and prayers the Vikings forged ahead at the finish to beat Manual and take the championship. And we had made such careful plans for a victorious celebration, even to the firecrackers. Oh well, next year.

Mar. 8—Carlo Cavaleri and Joe Cirrincione are chosen for All-Stars. Not bad, boys.

Mar. 13—The brazen note of the gong spelled disillusion for many hopeful radio performers in the auditorium as the Girls' "M" Club presented an amateur hour. Florene Jones doubled for Major Bowes very well, don't you think?

April 6—All longlegged Manual boys are called out as we prepare for the track season.

April 17—The music classes go Broadway, and the "Music Frolic" is the result. Honestly, it was the best entertainment given at Manual in many, many moons.

April 24—And did our Battalion look strange at the annual R. O. T. C. Circus,

MODERN TYPOGRAPHY

DIRECT ADVERTISING

COLOR PRINTING

HOUSE ORGANS

MAGAZINES

CATALOGUES

BOOKS

Printers of  
The Nautilus

THE LOWELL PRESS

VA 4474  
3017 Main St.

hopping and bouncing around in what was laughingly named an athletic drill. Several of our most intelligent students got right up and walked out again, thinking they were in the wrong place.

SCIENTIFIC NOTE

Perpetual motion  
Now has come!  
Watch Erma Martin  
Chew her gum!

SENIOR OFFICERS

Big Cheese ..... Billy Petty  
Big Cheese No. 2 ..... Leonard Fergus  
Pencil Pusher ..... Agnes Bay  
Money Grabber ..... Barney Altman  
Endowmentster ..... Reva Aronson  
Joy Shusher ..... Eugene Leach

BEST SELLERS

"Up from the Gutter," an autobiography by Bernard Gershon.

Dorothy Sollars relates her past in "Secrets of My Love Life."

Read "Confessions of a Gate Crasher," by Raymond Stark, an authority on the subject.

"Private Life of an Amazon," by Ann Mangiaracina.

"Silence is Bliss," believe it or not, by Richard Turner Esquire.

"I Believe in Capital Punishment"—George A. Peterson.

Eighty-One

**LIFE INSURANCE**  
**A Bulwark of Safety**

*Because*

Children must be free from the struggle for existence;  
 Family ties must be held together and homes made secure with the necessities of life;

Youth must be educated to meet the demands necessary for entering into modern business;

Every man and woman desires safety and security against the vicissitudes of life;—

LIFE INSURANCE has built up A BULWARK OF SAFETY, taking many of the "IFS" out of life and making possible the fulfillment of our most precious desires.

**KANSAS CITY LIFE INSURANCE COMPANY**  
 Home Office—3520 Broadway  
 KANSAS CITY, MISSOURI

MERCANTILE HOME BANK & TRUST CO.

1119 Walnut

EVERY BANKING SERVICE

**IDEAL MANUAL GIRL**

Hair ..... Laura Belle Weant  
 Eyes ..... Cleo Stolberg  
 Profile ..... June Shepard  
 Figure ..... Bessie Krevitzky  
 Hands ..... Reva Aronson  
 Personality ..... Agnes Bay  
 Complexion ..... Esther Feinberg  
 Technique ..... Phyllis Trammell  
 Intelligence ..... Jacqueline Bayan  
 Wit ..... India Stevens

**IDEAL MANUAL BOY**

Hair ..... Eugene Leach  
 Eyes ..... Lee Birdsong  
 Profile ..... Norman Harris  
 Physique ..... Charles Lawson  
 Hands ..... Lee Foster  
 Personality ..... Tom Couser  
 Complexion ..... Malcolm Richardson  
 Technique ..... Leonard Fergus  
 Wit ..... Donald Drinkard  
 Dependability ..... Billy Petty

*How Much Light Is Enough?*

For close seeing tasks, such as reading and study, your lamp should have not less than one 100-watt; two 60-watt; or three 40-watt bulbs.

For "Better Light — Better Sight" — use the I. E. S. Study Lamp. It is approved by the Illuminating Engineering Society.

**KANSAS CITY POWER & LIGHT CO.**  
Baltimore at 14th St. (GR 0060)

LITERATURE FOR NAUTILUS

- Little Men.....Abe Dreiseszun, Jimmie Milam  
 To Have and To Hold.....E's in Latin  
 A Tale of Two Cities.....Lee Collins  
 Ye Old Curiosity Shoppe..Manual's Attic  
 The great Impersonation—Juniors acting like Seniors  
 Little Women....Beverly Cookus, Ruby Stolov  
 The Three Musketeers....Plaskett, Cirrincione, Cavaleri  
 Romeo and Juliet.....Tony Totta and Rita Webb  
 The Golden Age .....Sweet Sixteen  
 Sentimental Tommy....Tommy Tressler  
 Our Enemy .....Central High School  
 She Stoops to Conquer..Dorothy Patton  
 Pilgrim's Progress.....Bernard Gershon  
 Golden Treasury .....Bernard Rawlings  
 As You Like It.....Pauline Lewis  
 Lady of the Lake.....June Shepard  
 Hoosier School Master.....Mr. Listrom

ALTMAN'S

101 East 11th St.

SPECIAL HIGH SCHOOL JEWELRY

SALES AND SERVICE DEPARTMENT

We want to thank the Seniors for their ring order this year, and wish to thank Miss Pugh and Mr. Peterson for their co-operation.

*Eighty-Three*

**FINLAY ENGINEERING COLLEGE**

Chartered by the State

Complete courses leading to degree, in two years, in Electrical, Mechanical, Structural, Architectural, Civil, Aeronautical, and Highway Engineering. Also short, specific courses in Electricity, Diesel-Electric, Air-Conditioning, and Drafting. Theoretical and applied engineering essentials comprehensively taught. Close contact of student and teacher. For thirty-six years Finlay has been effectively training engineers for Industrial demand which assures graduates of positions of responsibility and advancement. Before considering other schools, investigate Finlay. Day and evening schools. Catalog on request. Visitors welcome.

1001 Indiana Avenue

Benton 0295

**BUNGALOW LUNCH SYSTEM**

Incorporated



Bungalows Everywhere

Convenient Locations at:

- |                         |                    |
|-------------------------|--------------------|
| 605 East 9th St.        | 3036 Main St.      |
| 846 Minnesota Ave.      | 1316 Walnut St.    |
| 1125 East 15th St.      | 1434 Main St.      |
| 1506 East 15th St.      | 1309 McGee St.     |
| 4631 Independence Ave.  | 1315 Main St.      |
| 4112 Mill Creek Parkway | 1106 Wyandotte St. |

All Bungalows Open  
24 HOURS A DAY

**THOSE**

- Norman H arris  
John M A ggio  
Lloyd Je N kins  
Leonar D Fergus  
John S mitherman  
Eddie Br O wn  
To M Couser  
Fr E d Wallace  
  
Sikes S immons  
Barn E y Altman  
Ber N ard Rawlings  
B I lly Petty  
Ge O rge McKeehan  
Tony R andazzo  
We S ley Nelson

**! FLASH !**

ERRET HANSEN WAITS ANXIOUSLY IN EXPECTATION OF AN IDEA STOP ENTIRE SCHOOL TURNS OUT STOP FACULTY MEMBERS GROW WEARY WITH SUSPENSE STOP WIRE ROBERT RIPLEY UPON ITS ARRIVAL STOP PLACE IN INCUBATOR IF NECESSITY DEMANDS STOP



COMING ATTRACTIONS

- "She Gets Her Man," starring Ivaruth Brotherton and June Shepard.  
 "Accent on Youth," with Abe Dreiseszun and Jack Davis.  
 "The Nit Wits," co-starring Norman Cox and Beverly Cookus.  
 "Wife vs. Secretary," with Reva Aronson, LaMar Sizemore, and Virginia Reeves.  
 "The Littlest Rebel," featuring Juanita Millner.  
 "Klondike Annie," with Viola Hall.  
 "Professional Soldier," Bob Fairchild.  
 "Mr. Hobo," Donald Drinkard.  
 "Follow the Fleet," co-starring Lois and Lloyd Jenkins.  
 "Stars Over Broadway," featuring the dancing feet of Hughes and Mundon.  
 "Little Lord Fauntleroy," Dickie Dinus.  
 "Ginger," starring Rachel Appleton.  
 "Bright Eyes," Edna Wilson.  
 "She Couldn't Take It," featuring Marianne Harling.  
 "Smart Girl," Esther Johnson.  
 "Love on a Bet," Charles Lawson.  
 "Collegiate," Jack Northrup.  
 "Petticoat Fever," starring Otto Powell.  
 "Midsummer Night's Dream," featuring Dorothy Goshorn and Leonard Fergus.

JUST EQUATIONS

- R. O. T. C.—Elmo Hargrave=No Army.  
 Teachers+Industrious Students=Okay.  
 Maxine Tidrick+Bad Grades=Fairy Tale.  
 Mr. Lamar in Office+Bad Boy=Bad for Boy.  
 Elizabeth Grunden—Jacqueline Bayan=Impossibility.  
 Charles Lawson+A Basketball=A Real Player.  
 John Fitzpatrick + June Shepard + Otto Powell=A Real Triangle.  
 Cleo Stolberg—Homework=Gloomy Girl.  
 Barney Altman+Money=Gift for Manual.  
 Miss Pugh+Pep=Surprise.  
 Jane Dameron+Harry Robertson=Puppy Love.  
 Evelyn Boutross + Mouse in Locker = Screams.  
 Staff+Cooperation=Nautilus.

And Again Once More

CRESSWELL

Satisfies



CRESSWELL PHOTO SERVICE

915 Grand Avenue

Harrison 2180

Night—HI 6510

MANUAL'S MOST DOMINANT  
 "TWINS"

Mr. J. W. Laury and Mr. J. A. Listrom

- Both have initials J. L.  
 Both are Manual High teachers.  
 Both have taught at Westport Junior.  
 Both have been advisers of our Junior Class.  
 Both are interested in sports.  
 Both are real "pals" to their pupils.  
 Their personalities are much alike.  
 Both have a fine sense of humor.  
 Upon seeing them for the first time they look very much alike.  
 Both like country life.  
 Both live on a forty hundred block in the city.  
 Both are married.  
 Both have children.  
 They are very good friends.

Eighty-Five

KANSAS CITY SCHOOL OF LAW

*Founded in 1895*

42ND YEAR

Day and evening law school beginning September 16, 1936. Both schools confer degrees of LL.B. Day school period 8 A. M. to 12 o'clock noon covers a period of three years. Evening school 6:30 P. M. to 9:15 P. M., four years.

Two years of college required for enrollment.

*Telephone*  
HARRISON 3262

Kansas City School of Law Building,  
913 Baltimore Avenue

COMMENCEMENT  
ANNOUNCEMENTS  
PERSONAL CARDS  
SOCIAL STATIONERY

Expert craftsmanship in all  
hand engraved stationery

JACCARD JEWELRY CO.  
1017 Walnut Street  
KANSAS CITY, MISSOURI

National Championship Awards,  
Medals, Trophies, Charms,  
*Created and Manufactured by*

JOSTEN'S

SINCE 1897

FACTORY: OWATONNA, MINN.

*Write for Catalog*

N A U T I L U S

---

AUTOGRAPHS

*Eighty-Seven*

---

1936

N A U T I L U S

---

AUTOGRAPHS

*Eighty-Eight*

---

1936

