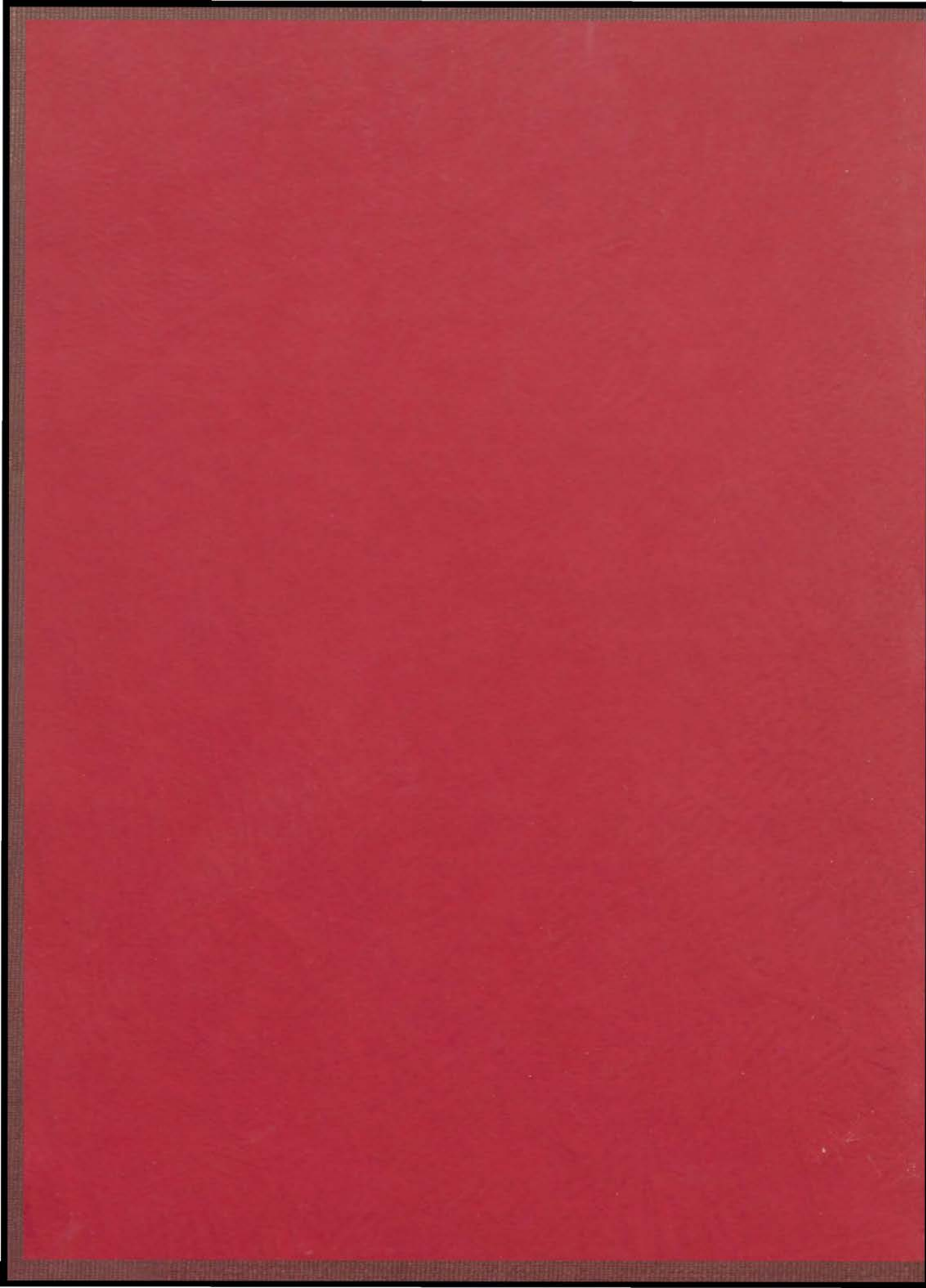


MANUAL NAUTILUS

—————

1938





THE NAUTILUS  

---

---

  
OF 1933  

---

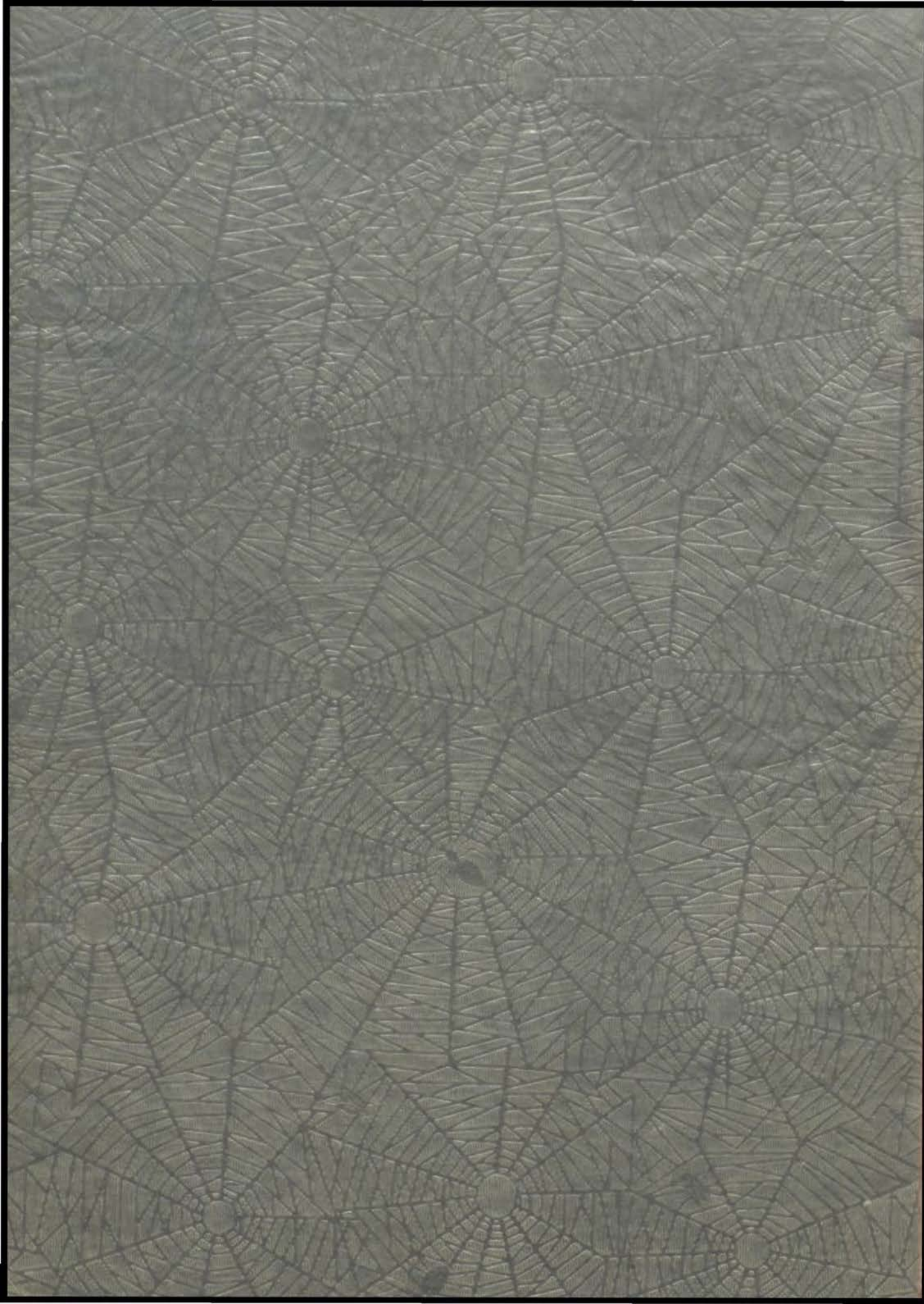
---



*Published by the Students of*  
**Manual Training High School**

★

ALICE HOELTGEN . . . . . *Editor-in-Chief*  
ANNA FAYE LEE . . . . . *Associate Editor*  
JACK LEACH . . . . . *Associate Editor*  
GOLDENE GOTTLIEB . . . . . *Business Manager*





PUBLIC LIBRARY  
KANSAS CITY  
MO

# THE NAUTILUS

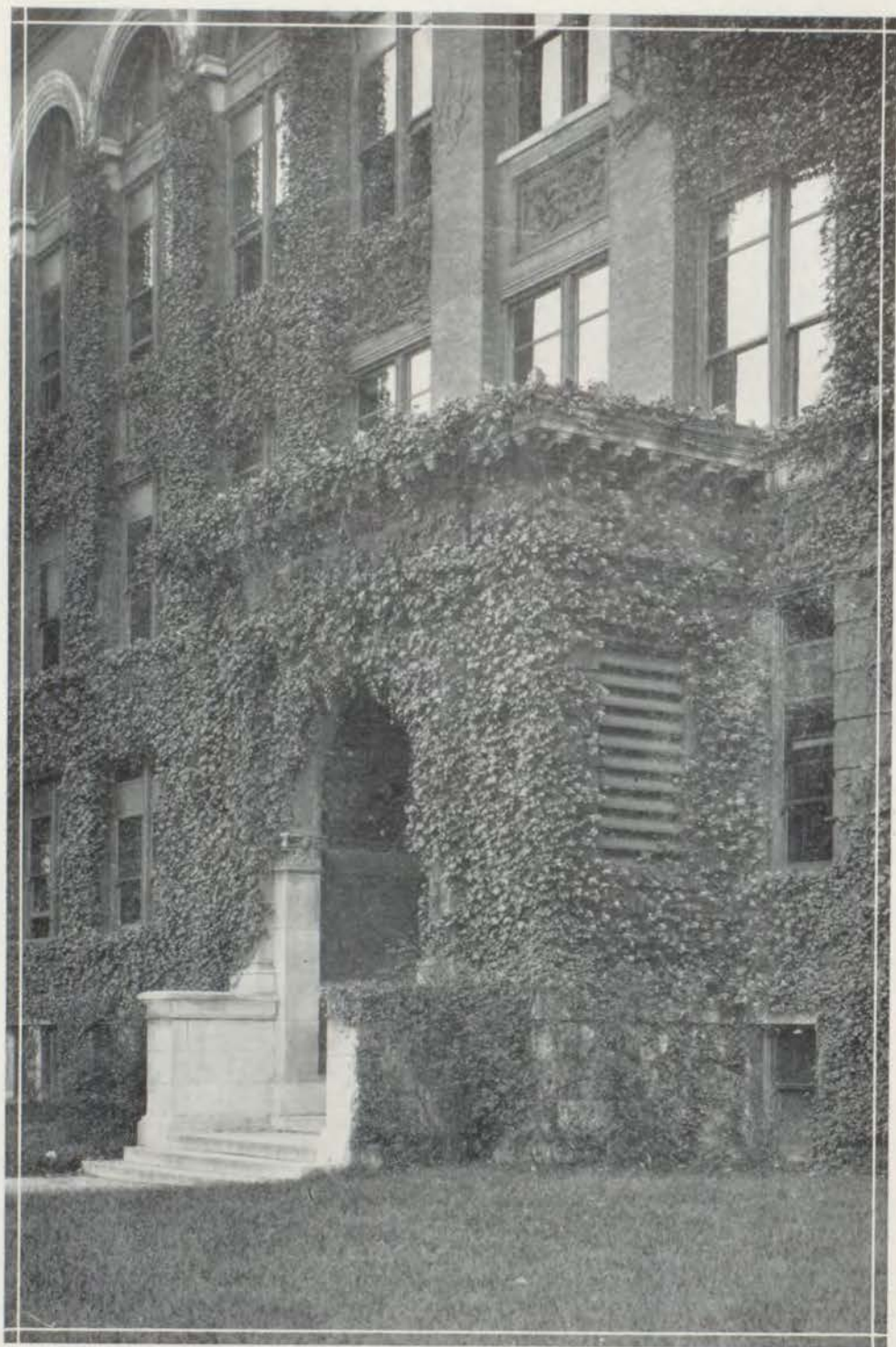
## OF 1933



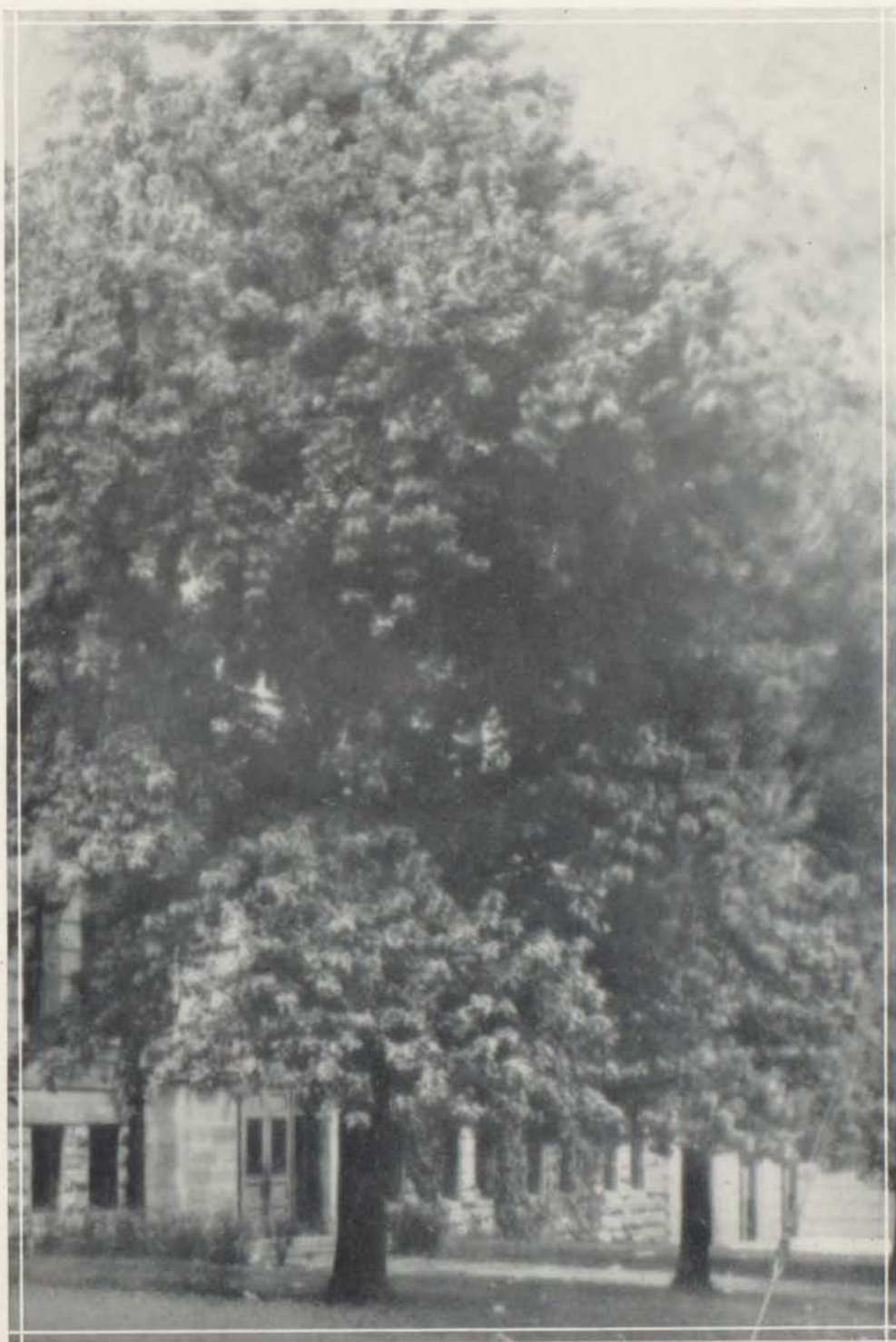
*Published by the Students of*  
**Manual Training High School**



ALICE HOELTGEN . . . . . *Editor-in-Chief*  
ANNA FAYE LEE . . . . . *Associate Editor*  
JACK LEACH . . . . . *Associate Editor*  
GOLDENE GOTTLIEB . . . . . *Business Manager*



OUR ALMA MATER



'NEATH SHADY TREES



E. B. DENISON

"None knew him but to love him;  
None named him but to praise."





FRANKLIN S. LAMAR  
*Principal*



CHARLES A. BARRETT  
Printing



ANGUS F. BARRY  
History



CLARA BOULTON  
Mathematics



LOUIS P. BROUS  
Drafting



HANNAH BURY  
English



GERTRUDE CAMPBELL  
Study Hall



MARION CARROLL  
Art



ZULA CHASE  
Commerce



MARGUERITE DERBY  
Clerk



CHARLES DIXON  
Mathematics



DELLA E. DRAKE  
Latin



NINA A. DRAKE  
Spanish



C. C. FAIRCHILD  
Public Speaking



SGT. FRED FAUST  
R. O. T. C.



MARION HUSCHER  
Science



ELLA HUTCHINS  
Commerce



RACHEL HUTCHISON  
Art





JESSIE L. GRIFFITH  
Domestic Science



RUTH JACOBSON  
Commerce



ELIZABETH JAMES  
Domestic Science



F. B. JOHNSON  
Shop



J. M. KENT  
Steam and Electricity



B. F. KIZER  
English



EMMA L. KUBE  
History



JOHN W. LAURY  
Science



S. M. LONG  
Shop



HELEN McDONNA  
English



JOHN McMURPHEY  
Physical Education



G. L. MacCURDY  
Mathematics



ETHEL NAGLE  
Science



ESTHER PEERS  
Librarian



DR. HELEN R. PERKINS  
Physical Education



P. B. S. PETERS  
Commerce



GEORGE A. PETERSON  
History



ELIZABETH PUGH  
History



AMANDA B. RUCKER  
English



FRANCES J. SEXTON  
Registrar



ELIZABETH B. SCOTT  
Educational Counselor



LAURA M. STEARNS  
English



SARAH E. STEELE  
History



RUTH E. HAWKINS  
Hygienist



JAMES HILL  
Custodian





SENIOR CLASS OFFICERS

*President* ..... Melchior Enna  
*Vice-President* ..... Jack Leach  
*Secretary* ..... Mary Frances James  
*Treasurer* ..... Anna Faye Lee  
*Sergeant-at-Arms* ..... LeRoy McCoy  
*Giftorian* ..... Thelma Larson  
*Advisers* ..... Miss Elizabeth Pugh, George A. Peterson

SENIOR BALLOT

Most Popular Girl ..... Mary Frances James  
 Most Popular Boy ..... Buddy Lambert  
 Girl Who Has Done Most For Manual ..... Thelma Larson  
 Boy Who Has Done Most For Manual ..... Jack Leach  
 Best Girl Student ..... Ida Mae McCroskey  
 Best Boy Student ..... Dayton Ballard  
 Belle Brummel ..... Filipa Nigro  
 Beau Brummel ..... George Guastella  
 Best Girl in Sports ..... Dorothy Calahan  
 Best Boy in Sports ..... Tom Mortallaro  
 Biggest Bluffer ..... Mike Lucito  
 Most Talkative Girl ..... Marion Bob Rocheld  
 Most Talkative Boy ..... Louis Dubinsky  
 Best Girl Songster ..... Miriam Zittin  
 Best Boy Songster ..... French Butler  
 Best Boy Orator ..... Morris Lerner  
 Best Girl Orator ..... Anna Faye Lee  
 Most Polite Student ..... Harry Statland

Eleven



ANTHONY KOZINSKI



MARIE KUZEWSKI



DEMETRI ANDREANI



DANTE APPA



EVELYN ANDERSON



DAVID BAGARD



MARIE BELMONTE



ROBERT BERTRICH



VIRGINIA BELMONTE



VERA MISHAM



JOHN BALESIERE



EUGENE BIALOWSKI



WALTER BORING



MARY BOUDONOFF



MAXINE CORBELLE



MAX CICHANSKI



MOLLIE BABIN



VERNON BURRELL



MARGARET WILLIAMS



ANTHONY CAPRIANNI



CLIFF DAMBLER



WANDA ERIKA



JOHN ENGARD



HAROLD BROWN



ALBERT MURRANNA



DOROTHY CARLSON



EDITH FERRIS



MARY ELLEN



AMPEDE CORBELLE



CLYDE DAVIS

SENIOR ACTIVITY RECORD

<p>EVELYN ANDERSON Dramatic Play; Glee Club; Operetta.</p>	<p>ANGELENE LOUISE BONACORSO Glee Club; Pageant; Op- era; Student Council.</p>	<p>CHRISTOPHER CASTRIANNI Band</p>
<p>DOMINIC J. ANDREANO Student Council.</p>	<p>MARGARET BOUTROSS Manual Art Society; Girl Reserves; Service Chair- man; Health Letter; Glee Club.</p>	<p>JEANETTE COHEN Girls' "M" Club; Hamil- tonian Literary Society; Manualite Staff; Student Council; Basketball; Vol- leyball.</p>
<p>MARCELLA BAIR Bentonian Literary Soci- ety; Girl Reserves; Junior Ballot; R. O. T. C. Circus.</p>	<p>CLO BRASHEAR Health Club; Art Society; Bentonian Literary Soci- ety; Student Council; Bury- tonian Literary Club; Na- tional Honor Society.</p>	<p>ETHEL CUBBAGE Burytonian Literary Club; Art Society; Girl Res- erves; Glee Club; Student Council; R. O. T. C. Circus.</p>
<p>DAYTON BALLARD Burytonian Literary Club, President; National Honor Society; Philomathean Lit- erary Society.</p>	<p>MARY BRIZENDINE Bentonian Literary Soci- ety; Art Society; Girl Res- erves; Burytonian Lit- erary Club; Manualite Staff; Gym Show; R. O. T. C. Circus.</p>	<p>ALBERT DIGIOVANNA Student Council; Track Team; Boys' High School Club; Inter-Class Track Meet; Boys' Gym Show.</p>
<p>MARIE CONSTANCE BELMONTE Gym Show; Pageant; Ten- nis Tournament; Orches- tra; R. O. T. C. Circus.</p>	<p>MILLIE BROWN Girls' "M" Club; R. O. T. C. Circus; Gym Show; Student Council; Basket- ball; Life Saving; Volley- ball; Hamiltonian Liter- ary Society, Vice-Presi- dent.</p>	<p>ANGELINA D'MAGGIO Art Society; Astorian Club; Volleyball; Basket- ball; Fashion Revue; Na- tional Honor Society.</p>
<p>VIRGINIA LOUISE BELMONTE R. O. T. C. Circus; Pag- eant; Fashion Revue; Tennis Tournament; Root- ers Club; Manualite Rep- resentative.</p>	<p>DOROTHY MAY CALAHAN Bentonian Literary Soci- ety, Secretary; Girls' "M" Club, President; Basket- ball, Manager; Volley- ball; R. O. T. C. Circus; Health Club; Athletic Let- ters.</p>	<p>JACK FROGUE Manual Society of Debate; Burytonian Literary Club; Boys' High School Club.</p>
<p>VERA BENHAM Bentonian Literary Soci- ety; Art Society; Buryton- ian Literary Club; Girls' Gym Show; Pageant; Na- tional Honor Society.</p>	<p>JOHN CASCOE Philomathean Literary So- ciety; Boys' High School Club; Inter-Class Track Meet; Boys' Gym Show; Junior Finance Committee.</p>	





CARL DEGARD



WYNNE EBERHART



GEORGE DOHERTY



BOB D'ANGELO



RUTH EVANS



MYRTLE EVANS



THELMA VEITRADT



LYNN JOHNSON



NANCY FITZPATRICK



DORIS JENSEN



ROSS JOLLY



RUTH LUNDQUIST



LYLLOD TOMALS



ELEANOR HOFFMAN



RICHARD LENT



VICTOR HENNRICH



ESTHER GORDON



ED LEVAN



VIRGINIA GREENWAY



BOB GAFFNEY



FRANCES GORDON



HELEN HANSEN



DAVID GOODMAN



PAULINE JENSEN



ROY HAGEDORN



MRS. HORGREN



ORVILLE HOWARD



SEIRGI KALLE



HELEN KUNTZ



GEORGE KUNTZ

SENIOR ACTIVITY RECORD

JOHN DALEO

Boys' "M" Club; Track; Basketball.

AUDREY FLOREA

Glee Club; Washington Program; Sharps and Flats Society; Athena Literary Society.

PAULINE HANICK

Hamiltonian Literary Society; Astorian Club; Burytonian Literary Club; Health Club; Dramatic Plays; R. O. T. C. Circus; Fashion Revue.

JOE D'ANGELO

Bentonian Literary Society; Art Society, President; Student Council; Manualite Staff.

EMMA FLUDERER

Athena Literary Society; Girls' "M" Club, Vice-President; Basketball; Volleyball; Health Club; Athletic Letters; R. O. T. C. Circus.

HELEN HARRIS

Bentonian Literary Society, Secretary; Art Society, Treasurer; Sponsor Captain; Burytonian Literary Club.

SIDNEY DEVINS

Hamiltonian Literary Society, President; Demosthenes Debate Society; Student Council; Dramatic Plays; Senior Life Saving.

EDITH MAY FUNKHOUSER

Bankers' Club; Student Council; Bentonian Literary Society; R. O. T. C. Circus; Gym Show.

JOE HOBAN

Demosthenes Debate Society; Art Society; Boys' "M" Club.

LOUIS DUBINSKY

Philomathean Literary Society, Vice-President; Demosthenes Debate Society; Cheerleader; Student Council; Dramatic Plays; Orchestra.

ROSS GAGLIANO

Bentonian Literary Society; Track Team.

ALICE HOELTGEN

Athena Literary Society; Girls' "M" Club; Nautilus Staff, Editor-in-Chief; Girl Reserves, Vice-President; Astorian Club; National Honor Society.

MINNIE EISENBERG

Girls' "M" Club; Hamiltonian Literary Society; Life Saving; Baseball; Volleyball; Basketball; Fashion Revue.

FRANCES GERSHON

Hamiltonian Literary Society, Critic-Reporter; Sharps and Flats Society; Student Council; Orchestra.

CHARLES HOROVITZ

Hamiltonian Literary Society; R. O. T. C., Officers' Club; Crack Company.

RUTH EVANS

Athena Literary Society; Girls' "M" Club; Astorian Club; Girl Reserves; Baseball Manager; Life Saving; Basketball; Volleyball.

DAVID GOODMAN

R. O. T. C., Crack Squad, Crack Platoon, Crack Company, Rifle Team, First Lieutenant; Bentonian Literary Society, Treasurer; Boys' High School Club, Vice-President.

ORVILLE HOWARD

Manualite Staff; Art Society; Manual Society of Debate; Track.

NANCY ELEANOR FITZPATRICK

Athena Literary Society; Pageant; Burytonian Literary Club; Girl Reserves.

ESTHER GORMAN

Glee Club; Operetta; Baseball.

JOE INDELICATO

Boys' High School Club; Track; Manualite Representative.

ELEANOR FLEITMAN

Burytonian Literary Club; R. O. T. C. Circus; Hamiltonian Literary Society; Contest, First Place; National Honor Society.

GEORGE GUASTELLA

Track Team; Athletic Letter; Art Society; Philomathean Literary Society.

ZELMA JONES

Glee Club; Opera; Pageant; Junior Finance Committee; Senior Finance Committee.

RICHARD A. FLINT

Manual Society of Debate; School Letter; Student Council.

VIRGINIA GREENWAY

Philomathean Literary Society, President, Vice-President; Sharps and Flats Society; Glee Club.

HUGH KYLE

Bentonian Literary Society; Demosthenes Debate Society, Secretary; Boys' High School Club; Student Council, Treasurer; Debate Team; Boys' Declamation, first place; National Honor Society.



MORRIS ZANDER



INNA KABAN



EMILY KRAHN



DOROTHY RUTZ



GLENN KRAHN



LAWRENCE



JOSEPH LATTNER



JOHN LOMBARDI



LUCRETIA



DOROTHY WADE



MICHAEL ALCHITZ



STELLA MOORE



EVERETT LARKNER



ESTHER MORATH



MYRA MERVITZ



EDWARD FOX



IDA MAE MORKOFF



GERALD MCGARNEY



GEORGE JENSEN



WILLIAM MACOMBER



EUNICE MEEKER



HAZEL MEEKER



W. J. BOCKEL



BETTY MORDENS



JOHN JUREK



EDNA NIGRO



THOMAS MCELARD



LEOYD MARMELL



JENNIE MIKKELSEN



SAM NUTTER



SENIOR ACTIVITY RECORD

SHANNON JONES

Orchestra

ANNA KARNER

Girls' "M" Club, Treasurer; Bentonian Literary Society; Girl Reserves; R. O. T. C. Circus; Life Saving; Student Council; Baseball; Basketball; Fashion Revue.

ALVENA KRAMER

Bentonian Literary Society; Girls' "M" Club, Secretary; Girl Reserves; Manualite Staff; Student Council; Life Saving; Baseball; Basketball; Fashion Revue.

GELENA KRAMOS

Bentonian Literary Society; Girl Reserves; Glee Club; Fashion Revue; Nautilus Staff; Opera; Manualite Staff; Basketball; Baseball, Captain; Volleyball.

AGNES LAHTINEN

Glee Club; Operetta; Student Council; Manualite Staff; Nautilus Staff; National Honor Society.

JACK LEACH

Bentonian Literary Society, President; Junior Treasurer; Manualite Staff; Dramatic Leads; District Constitutional Orations, First Place; Debate Team; Senior Vice-President; National Honor Society.

MORRIS LERNER

Hamiltonian Literary Society, Treasurer, President; Demosthenes Debate Society; Boys' Extemporaneous Contest; Declamatory Contest; Tennis Team, Captain; Debate Team; Student Council.

HOWARD LIPPS

Philomathean Literary Society.

EVERETT LOCKWOOD

Manualite Staff; Philomathean Literary Society; R. O. T. C., Officers' Club, Crack Company, Crack Platoon; Burytonian Literary Club.

JOSEPH LOMBARDO

Philomathean Literary Society, Treasurer; Cheerleader; Student Council; Manualite Staff; Demosthenes Debate Society; Winner Freshman-Sophomore Oratorical Contest; Dramatic Plays.

MICHAEL JOSEPH LUCITO

Boys' High School Club; Gym Show; Basketball; Track Manager; Football; Boys' "M" Club.

EVA LUCKIE

Athena Literary Society; Fashion Revue; Girl Reserves; Health Club.

JOSEPHINE LUTZ

Student Council; Manual Art Society, Critic-Reporter; Manualite Staff; Athena Literary Society; Burytonian Literary Club; National Honor Society.

IMOGENE MCBEE

Glee Club; Operetta; Orchestra; Baseball.

IDA MAE McCROSKEY

Athena Literary Society; Manual Art Society; Girl Reserves, Treasurer; Basketball; Life Saving; Volleyball; Honor Pin; School and State Letters; National Honor Society.

STELLA MCGEE

Philomathean Literary Society, Secretary; Astorian Club; Fashion Revue.

WILLARD MAYCUMBER

Art Society

JUANITA MEALER

Philomathean Literary Society; Research Journalism Club; Glee Club; Opera; Manualite Staff.

MARIE MESSINA

Girl Reserves

MORRIS MILOVITZ

Student Council; Philomathean Literary Society; Demosthenes Debate Society.

GLORIAN MINEO

Bentonian Literary Society; Girls' "M" Club, Treasurer; Astorian Club; Girl Reserves; Student Council; Volleyball, Manager; Basketball, All Star Captain; Baseball.

ROSS MOLEY

Football; Boys' "M" Club.

MARY MOLINARO

Volleyball; Baseball; R. O. T. C. Circus.

CECILIA MORAINÉ

National Honor Society; Sponsor Major; Athena Literary Society, Secretary; Art Society; Burytonian Literary Club; First Place W. C. T. U. Essay Contests; Nautilus Staff; Girl Reserves.

TOM MORTALLARO

Boys' "M" Club; Football; Basketball; Track; Boys' State Letter; Boys' High School Club.

SAM NICOTRA

Football; Track; Orchestra.

JENNIE NIKITOUPLIS

Manualite Staff



LOU RAYO



MARTHA UMUKA



MARGARETTEN BEMBERT



MARGUERITE BOCKARD



FLORA MAY PANCHERINI



WILLIAM E. HOFF



VERA SWILD



EDITH SIMONS



JACK SCHOLTENBERG



HARRY STEADANO



MARJORIE WICKFIELD



PATRICIA RICKFORD



ROBERT VAUGHN



FRANCES GALT



ANNE KIBBEN



DOROTHY MORRIS



BETTY STULTZ



JEROME TRACY



LOIS HILL SMITH



FRANK SMITH



CATHERINE STEVENS



LILLIAN SWIERFORD



MANDEL WHITING



FRANCES YOUNG



ED WAIN



BETTY WEAVER



BERTHA JOVIN



PAULINE YOUNG



PEARL WOOTEN



WAIN WILLIAMS

# N A U T I L U S

## SENIOR ACTIVITY RECORD

### VALETA HENDERSON

Athena Literary Society;  
Girls' "M" Club; Manualite Staff; Baseball; Volleyball; Student Council.

### ROSE HUNTMAN

Student Council; Volleyball; Baseball; Basketball.

### MARGUERITE RENKERT

Burytonian Literary Club;  
R. O. T. C. Circus; Glee Club.

### LOUIS RAVIS

Hamiltonian Literary Society; Demosthenes Debate Society; Student Council; Junior Life Saving.

### KATHRYN PRICE

Dramatic Plays; R. O. T. C. Circus; Astorian Club.

### CLARA MAE PASQUALINO

R. O. T. C. Circus; Tennis Tournament; Orchestra; Girl Reserves; Basketball.

### CEOLA OSWALD

Athena Literary Society;  
Art Society, Vice-President; Typing Award; National Honor Society.

### MARTHA OSBORN

Philomathean Literary Society, Vice-President, Secretary; Sharps and Flats Society; Student Council; Glee Club.

### KIE MILLS

Boys' High School Club, Sergeant-at-Arms; R. O. T. C.; Crack Platoon; Crack Company; Burytonian Literary Club.

### HERMAN MENDELSON

Hamiltonian Literary Society; Boys' High School Club; Student Council; Bankers' Club; Basketball; Track.

### MARION BOB ROCHELD

R. O. T. C. Circus; Hamiltonian Literary Society; Gym Show; Student Council; Glee Club; Girl Reserves.

### PATRINA ROCKFORD

Girls' Gym Show; Life Saving; Manualite Staff.

### MARGUERITE RICCARDI

Sharps and Flats; Glee Club; Music Festival; Opera.

### WILLIAM SCHOTH

Student Council

### JACK SCHLICHENMAIER

Bentonian Literary Society, Treasurer; Art Society, Treasurer, President; Boys' High School Club; Orchestra; Football; Student Council.

### FRANK SCIMECA

Art Society; Student Council.

### MANUEL SCIORTINO

Boys' High School Club; Boys' "M" Club; Football; Basketball; Track, Cross-Country; Student Council.

### DOROTHY SHORES

Glee Club; Operetta; Pageant; Orchestra; Manualite Staff.

### EVA SIMMONS

Athena Literary Society; Astorian Club; Debate Team; Life Saving; Girl Reserves; Dramatic Plays; R. O. T. C. Circus; National Honor Society.

### IDA BELLE SMITH

Athena Literary Society; Astorian Club; Dramatic Plays; Student Council; Burytonian Literary Club; Fashion Revue.

### ANNA SORKIN

Hamiltonian Literary Society; Glee Club; Opera; Life Saving; Health Letter; Baseball; Fashion Revue; Gym Show.

### FRANCES STANBORN

Hamiltonian Literary Society; Astorian Club; Art Society; Student Council; R. O. T. C. Circus; Health Club; Volleyball; Baseball.

### HARRY STATLAND

Hamiltonian Literary Society, Treasurer; Art Society, Treasurer; Burytonian Literary Club, President; National Honor Society.

### EDITH STOLOW

Hamiltonian Literary Society; Astorian Club; Dramatic Plays; Girl Reserves; Orchestra; Life Saving; Health Letter; Manualite Staff; Girls' "M" Club; Baseball.

### RUBY STOLOW

Hamiltonian Literary Society; Astorian Club, Vice-President; Art Society; R. O. T. C. Circus; Baseball; Volleyball; Girl Reserves.

### KATHRYNE TENNYSON

Athena Literary Society; Burytonian Literary Club; Nautilus Staff; Manualite Staff; Life Saving; Student Council; Honorary Letters; Typing Awards; Girl Reserves.

### PEARL WEINSTEIN

Hamiltonian Literary Society; Girls' "M" Club; Astorian Club, Secretary; R. O. T. C. Circus; Glee Club; Operetta; Life Saving.

### WADE WILLIAMS

Basketball; Football; Boys' High School Club; Life Saving.

### PAULINE YOUNG

Athena Literary Society; Girls' "M" Club; R. O. T. C. Circus; Gym Show; Life Saving; Student Council; Basketball; Baseball; Glee Club Contestant.

### MIRIAM ZITTIN

Hamiltonian Literary Society; Girls' "M" Club; Student Council; Health Club; Basketball; Baseball; Volleyball; R. O. T. C. Circus; National Honor Society.





FRANCIS BUTLER



MARION BENNETT



MIRE BELMONTE



WILLIAM CORBIN



CLARA BETTE



LOUIS CARUSO



MEREDITH DEHAL



ROBERT FORSTLER



IVA MEYERS



RUTH CARBY



NICK KUMBELL



CAROLINE CONLON



EDWARD EMMELLE



JANE DRAKE



HAROLD HERRICK



MOLLIE GREWELL



LISSA DUTTON



ROBERT C. HENSON



VERA PARKINS



ALAN TAROMEY



ELIZABETH ETHERNAN



MILDRED JOSEPH



JOHN WHAFFEY



HELEN MYERS



HARRY GAULTNEY



ROSE LAMBERT



AL WAINNIE



EVELYN BOREN



DOROTHY PARRY



JACK O'BRIEN

# N A U T I L U S

## SENIOR ACTIVITY RECORD

### CLARA BATES

Girls' "M" Club; Bentonian Literary Society; Astorian Club; R. O. T. C. Circus; Dramatic Plays; Gym Show; Baseball; Band.

### JANE DRAKE

Student Council; Bentonian Literary Society; Burytonian Literary Club; Secretary, Treasurer; Manualite Staff; Manual Art Society, Vice-President; Nautilus Staff; National Honor Society.

### BOB MENOR

Manual Society of Debate; Boys' High School Club; Manualite Staff; Tennis Team; Basketball; Student Council.

### LOUIS CARUSO

Philomathean Literary Society; Boys' High School Club; Boys' "M" Club; Student Council; Basketball; R. O. T. C. Crack Company.

### MEMEORY DUMAS

Burytonian Literary Club; R. O. T. C. Circus; Gym Show; Glee Club; Opera; Pageant; Research Journalism Club.

### HELEN MEYERS

Research Journalism Club; Art Society; Dramatic Plays.

### RUTH CASSITY

Bentonian Literary Society, Vice-President; Girls' "M" Club; Girl Reserves; Student Council, Secretary; Life Saving; R. O. T. C. Circus; Dramatic Plays.

### ELIZABETH ETHELTON

Athena Literary Society, President, Vice-President; Art Society, Secretary; Astorian Club; Burytonian Literary Club; Nautilus Staff; Junior Ballot; Honor Pin; National Honor Society.

### DOROTHY PARRISH

Athena Literary Society; Sharps and Flats; Girl Reserves; Student Council; Glee Club; Fashion Revue; Opera; Junior Ballot; Nautilus Staff; National Honor Society.

### WILLIAM COHEN

Crack Company; Crack Platoon; Sergeant; Honorary Lieutenant; Hamiltonian Society, Secretary; Boys' High School Club; Demosthenes Debate Society; Football.

### ROBERT FORESTER

Manualite Staff; Manual Society of Debate, Secretary; R. O. T. C., Officers' Club; Crack Platoon; Crack Company; Burytonian Literary Club.

### REBA PARRISH

Philomathean Literary Society; Girls' "M" Club; Astorian Club; School Letter; Volleyball; Basketball, Captain; All-Star Basketball.

### LEONARD CONNELLY

Bentonian Literary Society, President; Art Society; R. O. T. C., Crack Platoon; Crack Company; Boys' High School Club; Glee Club; Life Saving.

### MIKE GREBOWIEC

Manualite Staff; Football; Dramatic Plays; Bentonian Literary Society; Boys' "M" Club; Demosthenes Debate Society; Debate Team; Track; National Honor Society.

### JULIUS ROSEN

Football; Basketball.

### CAROLINE COPULOS

Astorian Club; R. O. T. C. Circus; Art Society; Baseball; Volleyball; Health Letter; Girl Reserves.

### HAROLD HERRICK

Philomathean Literary Society, President; Research Journalism Club; R. O. T. C. Crack Platoon, Crack Company, Captain; Officers' Club, Vice-President; Gym Show.

### LOUIS H. SCHAEFFER

Boys' High School Club; Football; Art Society; Philomathean Literary Society; Officers' Club; Crack Squad; Crack Platoon; Crack Company; Student Council.

### LYDIA DOLTON

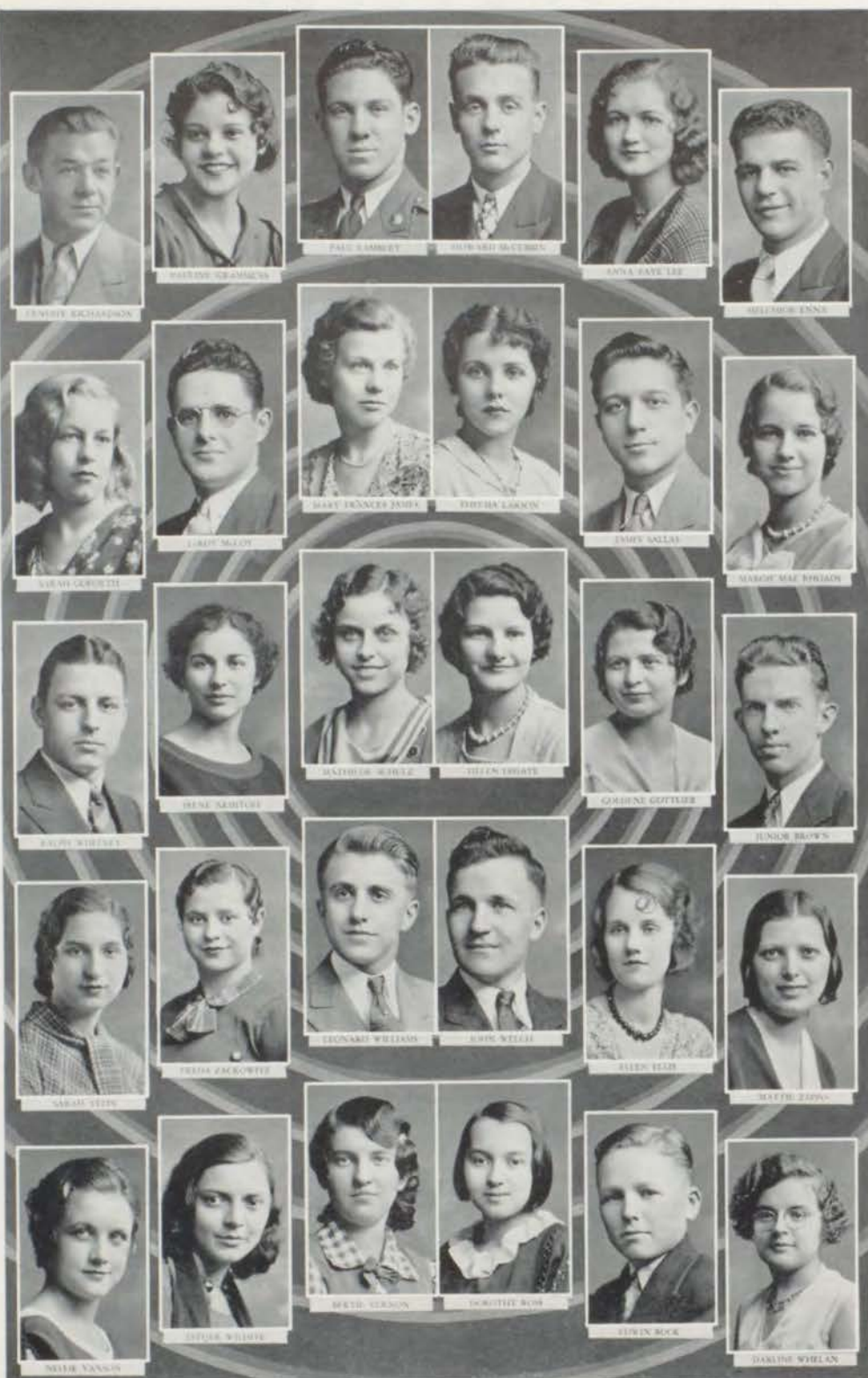
Athena Literary Society; Astorian Club; Girl Reserves; R. O. T. C. Circus; Fashion Revue.

### ROSE LAMANTIA

Burytonian Literary Club; Laureate Club.

### ALLEN TABOLSKY

Boys' High School Club; Student Council; Hamiltonian Literary Society; Sharps and Flats; Officers' Club; Crack Platoon; Crack Company.



ELMERY RICHARDSON



MARION SCAMMICK



PAUL SAMBET



EDWARD SACCOMB



ANNA EVEL LEE



MELVIN EMMS



VERA GARDNER



LARRY MALOT



MARY DONACE JAMES



ETHEL LARSON



EMORY SALLAI



MARION MAE BRIDAN



ELMY WITTEBY



HELEN SANDERS



MATHIE WHEELER



EILEEN THOMAS



GARDNE GUTLER



ELMOR BROWN



SARAH STEIN



HELEN ZIMMERT



LEONARD WILLIAMS



JOHN WELSH



EILEEN BIRD



BETTE ZAPPAL



MELBA YANSON



EVELYN WILSON



BETTE YERSON



MARGARET BUCH



ELMER BUCK



DARLINE WHELAN



# N A U T I L U S

## SENIOR ACTIVITY RECORD

### JUNIOR BROWN

R. O. T. C. Captain; Crack Platoon; Crack Company; Battalion Adjutant; Officers' Club, Treasurer; Student Council; Boys' High School Club.

### ELLEN ELLIS

Baseball; Volleyball; Girl Reserves; Junior Life Saving; Health Club; Fashion Revue.

### MELCHIOR ENNA

Nautilus Staff; Senior President; Junior President; Student Council, President; Football, Captain; Boys' High School Club, President; R. O. T. C. Captain; Art Society, President; National Honor Society.

### SARAH JANE GOFORTH

Student Council; Fashion Revue; Christmas Play; Girl Reserves.

### GOLDENE E. GOTTLIEB

Hamiltonian Literary Society; Student Council; R. O. T. C. Circus; Glee Club; Music Festival; Operetta; Girl Reserves; Fashion Revue; Nautilus Staff, Business Manager.

### PAULINE GRAMMENS

Athena Literary Society, Critic-Reporter; Girls' "M" Club; Girl Reserves; Nautilus Staff; Fashion Revue; Student Council; Dramatic Plays; Debate Team.

### FRANCES JAMES

Sophomore President; Junior Secretary; Girls' "M" Club, President; Athena Literary Society; Manualite Staff; Basketball; Volleyball; Student Council, Secretary; Senior Secretary.

### HARRY LAHTINEN

Student Council; Basketball.

### PAUL LAMBERT

R. O. T. C. Major; Junior Vice-President; Manual Society of Debate, President; Demosthenes Debate Society, President; Debate Team; Manualite Staff; Dramatic Plays.

### THELMA LARSON

Bentonian Literary Society, Vice-President; Girls' "M" Club; Senior Giftorian; Dramatic Plays; Sophomore Class Secretary; Sponsor Lieutenant; Student Council.

### ANNA FAYE LEE

Athena Literary Society; Nautilus Staff; Girl Reserves; Student Council; Girls' Orations, First Place; Senior Treasurer; District Constitutional Orations, Second Place; National Honor Society.

### HELEN LE GATE

Athena Literary Society; R. O. T. C. Circus; Manualite Staff; Astorian Club.

### LEROY MCCOY

Manual Society of Debate; Art Society; Life Saving; Sophomore Sergeant-at-Arms; Senior Sergeant-at-Arms; Student Council; Junior Ballot.

### HOWARD MCCUBBIN

Manualite Staff; Burytonian Literary Club; Demosthenes Debate Society; Dramatic Plays; R. O. T. C. Crack Company, Crack Platoon; Senior Finance Committee; National Honor Society.

### MARGIE MAE RHOADS

Athena Literary Society, President; Sharps and Flats Society, Secretary; Burytonian Literary Club; Astorian Club; Nautilus Staff; Honor Pin; Bankers' Club; National Honor Society.

### ERNESTE RICHARDSON

R. O. T. C., Crack Squad; Crack Platoon; Officers' Club; Glee Club.

### DOROTHY ROSS

Manualite Staff; Bank Assistant; Junior Life Saving.

### JAMES SALLAS

R. O. T. C., Corporal, Officers' Club; Orchestra.

### MATHILDE SCHULZ

Athena Literary Society, Secretary, Treasurer; Girls' "M" Club, Secretary; Girl Reserves, President; Frances Scarritt Hanly Girl; Sponsor Captain; Life Saving.

### NELLIE VANSON

Philomathean Literary Society, Critic; Basketball; Opera.

### BERTIE VERNON

Athena Literary Society; Fashion Revue; Typing Awards; Manualite Staff; Student Council; Girl Reserves.

### RALPH WHITNEY

Manual Society of Debate, Secretary; Orchestra.

### ESTHER WILHITE

Athena Literary Society, Treasurer; Manualite Staff; Fashion Revue; R. O. T. C. Circus; Girl Reserves; Student Council; National Honor Society.

### SARAH YELIN

Hamiltonian Literary Society, Vice-President; Astorian Club, President, Parliamentarian; Debate Team; Astorian Play Lead; Burytonian Literary Club, Parliamentarian; National Honor Society.

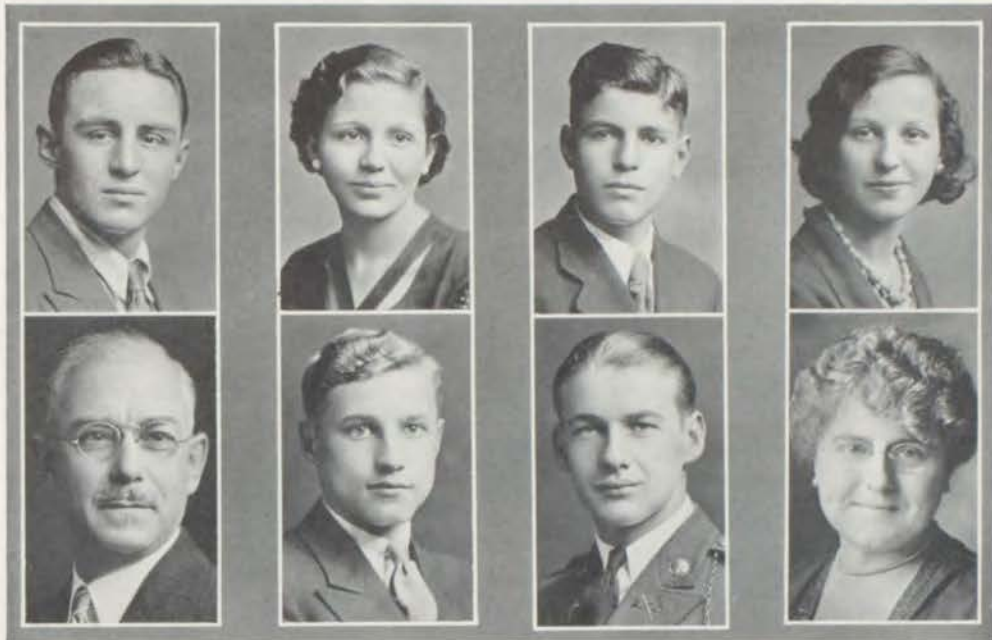
CANDIDATES FOR GRADUATION

BOYS

- David Epstein  
John Farris  
Nick Fiorello  
Richard Flint  
Louis Forbes  
Robert Forester  
Jack Frogue  
Ross Gagliano  
Nathan Goldstein  
David Goodman  
Michael Grabowicz  
George Guastella  
Walt Henderson  
Harold Herrick  
Joe Hoban  
Charles Horowitz  
Orville Howard  
Joe Indelicato  
Charles Kuehn  
Hugh Kyle  
Harry Lartinen  
Paul Lambert  
Jack Leach  
Morris Lerner  
Monte Lindvall  
Howard Lipps  
Everett Lockwood  
Joseph Lombardo  
John Long  
Michael Lucio  
Gerald McCartney  
Leroy McCoy  
Howard McCubbin  
William E. Madole

GIRLS

- Emma Puderer  
Edith M. Funkhouser  
Frances Gershon  
Sarah Goforth  
Esther Gorman  
Goldene Gottlieb  
Pauline Grammens  
Virginia Greenway  
Rose Huntman  
Alice Hoeltgen  
Rose Huntman  
Frances James  
Zelma Jones  
Mildred Joseph  
Anna Karner  
Alvena Karner  
Gleena Krarnos  
Agnes Lahnien  
Rose LaMantha  
Thelma Larson  
Anna Faye Lee  
Helen LeGate  
Eva Luckie  
Josephine Lutz  
Imogene McBee  
Ida Mae McCroskey  
Stella McGee  
Juanita Mealer  
Marie Messina  
Helen Meyers  
Glorian Mines  
Mary Molnar  
Ceelia Morrone  
Elizabeth Motley
- Robert Albritten  
Dominic Andreato  
Daniel Apra  
Anthony Balestrieri  
John Balestrieri  
Dayton Ballard  
Fred Beardley  
Mike Belfonte  
David Bonadonna  
Wayne Borling  
Vernon Boswell  
Junior Brown  
John Edwin Buck  
French Butler  
Eddie Carey  
Louis Caruso  
John Cascone  
Maryln Cassteel  
Christopher Castrianni  
William Cohen  
Leonard Connelly  
Jack Crabtree  
Sam Cusumano  
John Daleo  
Joe D'Angelo  
George Daniels  
Cyde Davis  
Sidney Devins  
Carl DiCappo  
Albert DiGiovanna  
Kenneth Drum  
Louis Dubinsky  
Melchor Enns
- Irene Nemtloff  
Lillian Nemtloff  
Phylla Negro  
Jennie Nikitopoulos  
Martha Osborn  
Dorothy Parrish  
Reba Parrish  
Clara Mae Pasquahno  
Kathryn Price  
Marguerite Renkert  
Margie Mae Rhoads  
Marguerite Riccardi  
Marion Bob Rocheld  
Patrina Rockford  
Dorothy Ross  
Frances Sala  
Mathilde Schulz  
Dorothy Shores  
Eva Mae Simmons  
Ida Belle Smith  
Anna Sorkin  
Frances Stanborn  
Edith Stoley  
Ruby Stoley  
Lillian Swerdloff  
Kathrynne Tennyson  
Rose Nellie Vannson  
Berthe Vernon  
Pearl Weinstein  
Darline Whelan  
Esther Wilhelm  
Sarah Yellin  
Pauline Young  
Freda Zuckowitz  
Mirtam Ziltn



JUNIOR CLASS OFFICERS

*President* ..... Herbert Knecht  
*Vice-President* ..... Gail Cunningham  
*Secretary* ..... Veto Enna  
*Treasurer* ..... Geneva Kramos  
*Sergeant-at-Arms* ..... Clifford Canaday  
*Gift Receiver* ..... Dwayne Smith  
*Advisers* ..... Miss Emma Kube, George L. MacCurdy

JUNIOR BALLOT

Most Popular Girl ..... Gail Cunningham  
 Most Popular Boy ..... Herbert Knecht  
 Girl Who Has Done Most for Manual ..... Geneva Kramos  
 Boy Who Has Done Most for Manual ..... Veto Enna  
 Best Girl Student ..... Burnell Watson  
 Best Boy Student ..... William Edwards  
 Belle Brummell ..... Winifred Fagg  
 Beau Brummell ..... Anthony Nigro  
 Best Girl Songster ..... Leora Major  
 Best Boy Songster ..... Norman Tanquary  
 Best Girl Orator ..... Minette Capito  
 Best Boy Orator ..... Alvin Silver  
 Most Polite Girl ..... Ellouise Green  
 Most Polite Boy ..... Clifford Canaday  
 Best Girl Athlete ..... Eleanor Blaser  
 Best Boy Athlete ..... Kenneth Shanklin



# NAUTILUS



## JUNIOR CLASS—GROUP ONE

TOP ROW: Bert McAfee; Ralph Benizio; Edward Kelley; Ralph Hoffman; John Green; James Few; Henry Hall; Carl Johnson; Francis Kretchmar; Anthony Nigro.  
THIRD ROW: Nadine Juniper; Bertha Jaime; Berniece Jue; Nellie McIntyre; Geneva Kramos; Lorena Lawson; William Edwards; David Kleiman; Leona McReynolds; Ethel Lagas.  
SECOND ROW: Adolphus Martinez; Charles Leach; Sidney Kadish; Herbert Knecht; Lillian Wright; Veto Enna; Cesare Merli; Dorothy Marshall.  
BOTTOM ROW: Joanita Nigro; Anna Orlando; Helen Morgan; Louise Maycumber; Minnie Paladino; Geraldine Stasi; Velmeta Mathany; Leora Major.

## JUNIOR CLASS—GROUP TWO

TOP ROW: Sam Arello; Charles Andreano; Carol Cox; Ida Dropkin; Gilbert Brenner; Aleck Bratt; Clifford Canaday; Carl Birkes; Junior Anderson; Katherine Copulos; Sally Aks.  
THIRD ROW: Lillian Helm; Elberta Armstrong; Mary Lois Bosley; Margaret Bordeaux; Eleanor Blaser; Caroline Daleo; Esther Gottlieb; Ellouise Green; Marjorie Hanson; Mamie Farrar.  
SECOND ROW: Edna Horan; Mary Louise Crews; Tillie Bellingloph; Florence Cona; Margaret Cacioppo; Viva Lee Bley; Virginia Bean; Gail Cunningham; Frank Allen; Vivian Bright.  
BOTTOM ROW: Minette Capito; Zenobia Bolen; Katie Cervasi; Mable Bruce; Alice Bates; Dorothea Howe; Geneva Bird; Eleanor Byars; Elinor Hanson.

# NAUTILUS



## JUNIOR CLASS—GROUP THREE

TOP ROW: Jimmy Price; Sam Santoro; Ramon Neff; Walter Mueller; Ben Nicholas; Daniel Miller; U. S. Smith; Joseph Rendina; Kenneth Shanklin; Louis Perricone.  
THIRD ROW: Jake Klein; Anthony Gillotti; John Magglo; Joe Guastella; Ross Markese; Meyer Planzer; Francis Palmer; Alfred Parisi; Pete Sauro; Alvin Silver.  
SECOND ROW: Margaret Whitney; Edith Jacobs; Marguerite Sherard; Avis Row; Mary Alice Sweeney; Esther Snyder; Marie Scott; Josephine Russo; Frances Powell.  
BOTTOM ROW: Bernice Tschorn; Claude Turner; Cleta Mae Mason; Louise Swigert; Georgia Tidrick; Louise Steele; Dwayne Smith; Louise Wineger.

## JUNIOR CLASS—GROUP FOUR

TOP ROW: Glen Shaffer; Marion Stout; John Limpic; Vernon Rogers; Buster Workizer; Jean Thacker; Tom Rollins; Alden Long.  
MIDDLE ROW: Frances Hindman; Alvina Floyd; Burnell Watson; Nina Underwood; Marie Hernandez; Nicola Ramirez; J. L. Watson.  
BOTTOM ROW: Angeline Oliva; Eugenia Wilds; Yvonne Riggs; Margaret West; Virginia Tomlinson.

*Twenty-Seven*





### SOPHOMORE CLASS—GROUP ONE

TOP ROW: Eugene Combs; Malcolm Davis; James Donnici; Pete D'Angelo; Abe Bettinger; Elton Ballard; Elmo Hargrave; Frank DiGiovanna; Bill Jones.  
 THIRD ROW: Margaret Aks; Agnes Belmonte; Josephine Becchina; Edythe Cohen; Florence Bradley; Abe Grandman; Opal Baird; Josephine Brown; Pauline Hefley; Georgia Harris.  
 SECOND ROW: Lewis Allen; Naomi Dale; Mary Benizio; Anne Duckworth; Mary Carter; Anna Bedenk; Leota Hill; Morris Feirstein.  
 BOTTOM ROW: Lawrence Licata, Sergeant-at-Arms; Lee Foster, Secretary; Frank Schlozman, President; DeVeta Marshall, Treasurer; Jack Mabel, Vice-President.

### SOPHOMORE CLASS—GROUP TWO

TOP ROW: Lawrence Licata, Sergeant-at-Arms; J. N. Ratliff; Jack Ritz; Harper Mitchell; Harry Nigro; Charles Lear; Clyde Gretzinger; Fred Hale; Lester Mathany; George McKeehan; Harold Ingram.  
 THIRD ROW: Ernest Vincent; James Wing; Clem Fairchild; Patricia Fitzpatrick; F. M. Gibson; Bertha Major; Clara Alice Renner; Leta Liggett; Helen Kuhlman; Frances Kariger; Robert Roy.  
 SECOND ROW: Ruth Evelyn Knight; Rosemary Zittin; Marguerite Mace; Leah Rosenbaum; Winifred Kleiman; Dorothea Ozar; Bernice Pendlay; Josephine Ribando; Elizabeth Neff; Herbert Rovick.  
 BOTTOM ROW: Maxine Young; Dorothea Wilson; Winnifred Shelton; Serena Tabolsky; Veta Piraro; Mary Mills; Maria Munoz; Wanda Sullivan.

*Twenty-Eight*



# NAUTILUS



## STUDENT COUNCIL—FIRST TERM

TOP ROW: Louis Dubinsky; Joseph Rendina; James Donnici; Louis Ravis; Sidney Devins; Nick Dean Miller; Crisanto Cachero.  
 THIRD ROW: Joseph Carrola; Reuben Levine; Ruth Reed; Margaret Fowler; Marion Rocheld; Angelene Bonacorso.  
 SECOND ROW: Richard Flint; Ida Belle Smith; Esther Gottlieb; Millie Brown; Miriam Zitten; Josephine Russo.  
 BOTTOM ROW: Anna Faye Lee; Hugh Kyle, Treasurer; Paul Lambert, Vice-President; Ruth Cassity, Secretary; Melchior Enna, President; Stella Sherwood.

## STUDENT COUNCIL—SECOND TERM

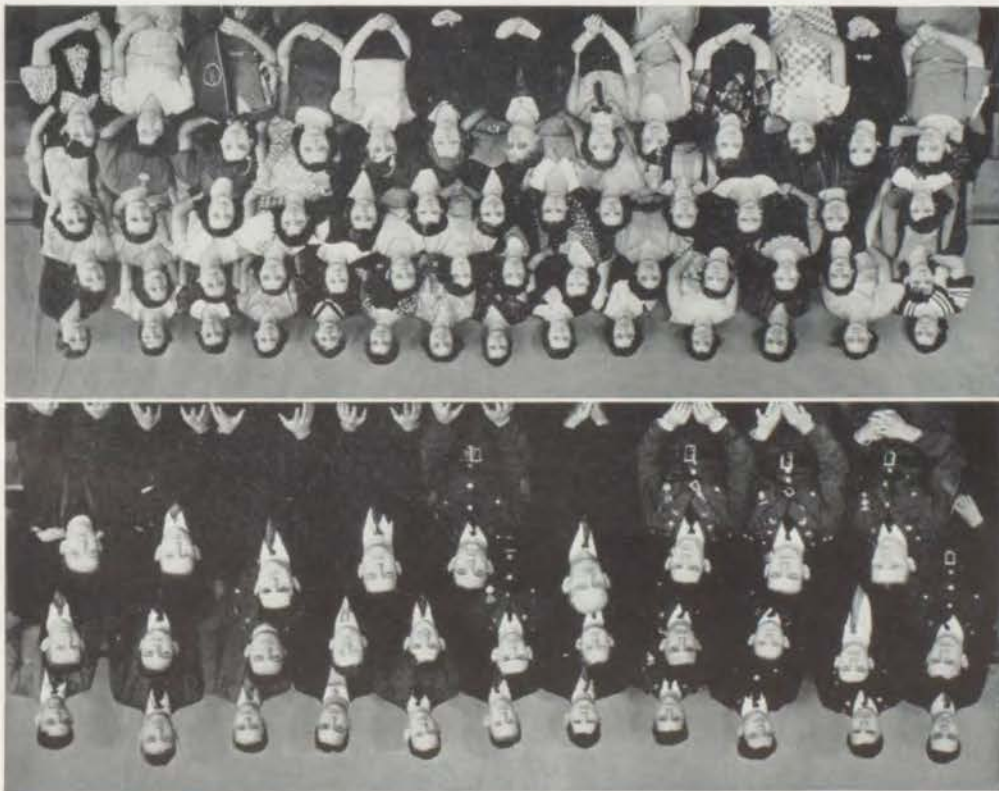
TOP ROW: Louis Dubinsky; Sidney Devins; Joseph Lombardo; Pauline Grammens; Alvena Kramer; Anna Karner; LeRoy McCoy; Glorian Mineo; Dominic Andreano.  
 THIRD ROW: Albert DiGiovanna; Marguerite Sherard; Dorothy Winkler; Herbert Knecht; Lee Foster; Agnes Lahtinen; Arlene Osburn.  
 SECOND ROW: Anna Orlando; Florence Cona; Charles Leach; Millie Brown; Stella Sherwood; Helen Owens.  
 BOTTOM ROW: Thelma Whitten; Hugh Kyle, Treasurer; Melchior Enna, Vice-President; Paul Lambert, President; June Shepard.

TOP ROW: Josephine Latz; Freeda Mae Smith; Eva Simmons; Leona McReynolds; Eva Luckie; Ida Belle Smith; Nancy Fitzpatrick; Irene Nemloff; Frances Powell; Gail Cunningham; Geneva Kramos; Eugenia Wilds; Nellie McIntyre; Frances Hindman; THIRD ROW: Betty Stanford; Georgia Tidrick; Burnell Watson; Winifred Fagg; Minette Capito; Margaret Sheppard; Soteria Fuehrer; Dorothy Parrish; Audrey Florea; Maurine Buck; Louise Swiert; Eleanor Blaser; Leora Major; Pauline Young; SECOND ROW: Hazel Wright; Emma Fluderer; Marjorie Hanson; Lillian Helm; Helen LaGate; Lydia Bolton; Kathryn Tennison; Ceola Oswald; Margaret Fowler; Dorothea Ozar; Phyllis Lane; Ruth Evans; Zenobia Bolen; BOTTOM ROW: Ida Mae McGroskey; Corresponding Secretary; Alice Hoelken; Corresponding Secretary; Pauline Grammens; Critic-Reporter; Anna Faye Lee; Vice-President; Frances James; Recording Secretary; Margie Mae Rhoads; President; Miss Kube; Adviser; Elizabeth Eberton; President; Mathilde Schmitz; Sergeant-at-Arms; Esther Wilhelm; Treasurer; Cecilia Moraine; Recording Secretary; Berniece Jue; Bertie Vernon.

### ATHENA LITERARY SOCIETY

TOP ROW: Robert Albritten, Pat Hurley, Bert McAfee, Claude Turner, F. M. Gibson, Marvin Plasket, Robert Menon, Walter Muehler, James Price, U. S. Smith, Lee Foster. MIDDLE ROW: J. N. Kahnt, J. Meisburger, Lewis Allen, L. D. Anderson, Clem Patrichid, Carl Johnson, Jean Edwards, Tom Rollins, Roy Ashley, Arnold Nelson. BOTTOM ROW: Frank Allen, Treasurer; Dwayne Smith, Vice-President; Paul Lambert, Pres-ident; Geo. A. Peterson, Adviser; Robert Forester, Secretary; Ralph Whitney, Secretary; Leroy McCoy, Sergeant-at-Arms; Burke Cowan, Critic-Reporter; Lester Shantzer.

### MANUAL SOCIETY OF DEBATE







PHIOMATHEAN LITERARY SOCIETY

TOP ROW: Joe Guastella; Gilbert Brenner; Cesare Merli; Julio Silva; Vernon Rogers; George Guastella; Hobart Hinton; Carl Birkes; Joe Indelicato; Louis Dubinsky; Morris Milovitz.  
 THIRD ROW: Dorothy Winkler; Opal Scott; Margaret Butler; Marie Farrell; Wanda Sullivan; Ruth Everett; Geraldine Stasi; Reba Parrish; Viva Lee Bley; Margaret Whitney; Louis Caruso; Melchior Enna.  
 SECOND ROW: Ernest Vincent; Dayton Ballard; Howard Lipps; Robert Vaught; Stella Sherwood; Velmeta Mathany; Marie Anderson; Virginia Bean; Mary Alice Sweeney; Eleanor Byars; John Cascone.  
 BOTTOM ROW: Nellie Vanson, Critic-Reporter; Stella McGee, Recording Secretary; Martha Osborn, Corresponding Secretary; Virginia Greenway, Vice-President; Mr. Huscher, Adviser; Miss Sexton, Adviser; Harold Herrick, President; Louise Maycumber, Recording Secretary; Joseph Lombardo, Treasurer; Veto Enna, Critic-Reporter; Joseph Carrolia, Sergeant-at-Arms.

BENTONIAN LITERARY SOCIETY

TOP ROW: Clifford Canaday; Adolphus Martinez; Leonard Rowland; Charles Leach; Ross Gagliano; Pete D'Angelo; Joe D'Angelo; Raphael Doyle; Edith Funkhouser; Winifred Kleiman; Theodore Kempter.  
 THIRD ROW: Clo Brashear; Dorothy Marshall; Ellouise Green; Gelena Kramos; Glorian Mineo; Virginia Tomlinson; Bernice Tschorn; Doris Marshall; Ernestine Brown; Mary Brizendine; Herbert Knecht, Critic-Reporter.  
 SECOND ROW: Cleta Mae Mason; Vera Benham; Marjorie Moore; Anna Bratcher; Pauline Hefley; Agnes Lahtinen; Jane Drake; Alvena Kramer; Anne Karner; David Goodman, Treasurer.  
 BOTTOM ROW: Dorothy Calahan, Secretary; Thelma Larson, Vice-President; Jack Leach, President; Mr. Barrett, Adviser; Miss Hawkins, Adviser; Leonard Connely, President; Ruth Cassity, Vice-President; Helen Harris, Secretary; Hugh Kyle, Parliamentarian; Mike Grobolec, Sergeant-at-Arms.



# NAUTILUS



## HAMILTONIAN LITERARY SOCIETY

TOP ROW: William Cohen, Corresponding Secretary; Jack Ritz; Harry Oxman; Alvin Silver, Historian; Louis Ravis; Allen Tabolsky, Sergeant-at-Arms; David Kleiman; Israel Mendelsohn; Reuben Levine; Edith Jacobs.  
 THIRD ROW: Morris Feirstein; Freda Zackowitz; Rose Himmel; Jeanette Levey; Sally Aks; Bertha Major; Serena Tabolsky; Ruby Stolov; Pearl Weinstein; Mary Cohen; Phineas Dreiseszun.  
 SECOND ROW: Rosemary Zittin; Leah Rosenbaum; Marion Rocheld; Tillie Belingloph; Goldene Gottlieb; Miriam Zittin; Frances Stanborn; Anna Sorkin; Edythe Cohen; Harry Statland, Treasurer.  
 BOTTOM ROW: Helen Kaufman, Treasurer; Sarah Yelin, Vice-President; Morris Lerner, President; Mr. Barry, Adviser; Miss Pugh, Adviser; Sidney Devins, President; Millie Brown, Vice-President.

## MANUAL ART SOCIETY

TOP ROW: Willard Maycumber; Louis H. Schaeffer; Eugene Gordon; Elmo Hargrave; James Donnicl; Cesare Merli; Louis Dubinsky; Elton Ballard; Leonard Connelly; LeRoy McCoy, Sergeant-at-Arms; Harry Statland, Treasurer.  
 THIRD ROW: Vera Benham; Naomi Dale; Ceola Oswald, Vice-President; Angelina D'Maggio; Katie Cervasi; Anna Orlando; Frances Stanborn; Margaret Boutross; Ruby Stolov; Josephine Lutz; Frances Powell.  
 SECOND ROW: Hazel Wright; Helen Romandel; Lillian Helm; Margaret Fowler; Louise Maycumber; Clo Brashear; Ethel Cabbage; Caroline Copulos; Katherine Copulos; Zenobia Bolen; Mary Brizendine.  
 BOTTOM ROW: Joe D'Angelo, President; Elizabeth Etherton, Secretary; Ceclia Moraine, Corresponding Secretary; Miss Hutchison, Adviser; Melchior Enna, Critic-Reporter; Helen Harris, Treasurer; Ida Mae McCroskey, Secretary; Gerald McCartney, President.

## NAUTILUS



### ASTORIAN CLUB

TOP ROW: Zenobia Bolen, Critic Reporter; Eugenia Wilds; Wanda Sullivan; Stella McGee; Georgia Tidrick; Frances Powell; Stella Sherwood; Glorian Mineo; Veta Piraro; Ellouise Green; Lucy Arnone.

THIRD ROW: June Shepard; Betty Stafford; Helen LeGate; Margie Mae Rhoads; Elizabeth Etherton, Sergeant-at-Arms; Ida Belle Smith; Lillian Wright; Caroline Copulos; Katherine Copulos; Caroline Daleo; Bertha Major.

SECOND ROW: Freeda Mae Smith; Dorothea Ozar; Frances Stanborn; Leah Rosenbaum; Louise Wineger; Edith Stolov; Angelina D'Maggio; Helen Romandel; Edith Jacobs.

BOTTOM ROW: Leora Major, Treasurer; Minette Capito, Secretary; Eva Simmons, Vice President; Sarah Yelin, President; Mr. Dixon, Adviser; Miss Boulton, Adviser; Ruby Stolov, Vice-President; Pauline Hanick, Sergeant-at-Arms; Alice Hoeltgen, Treasurer.

### DEMOSTHENES DEBATE SOCIETY

TOP ROW: Melchior Enna, Secretary; Sidney Devins; Herbert Knecht; Joe Hoban; Frank Allen; Howard McCubbin; Edgar Riderburg; Willard Stansbury; Robert Albritten.

MIDDLE ROW: Clem Fairchild; Alvin Silver; Louis Ravis; Charles Leach; Frank Schlozman; Aleck Bratt; Morris Lerner, Parliamentarian; Crisanto Cachero, Vice-President.

BOTTOM ROW: Jack Leach, Vice-President; Dwayne Smith, President; Paul Lambert, President; Mr. McMurphey, Adviser; Mr. Fairchild, Adviser; William Cohen, Sergeant-at-Arms; Reuben Levine, Treasurer; Hugh Kyle, Secretary.

*Thirty-Three*



# NAUTILUS



## GIRLS' "M" CLUB

TOP ROW: Geneva Bird; Millie Brown; Minnie Elsenberg; Reba Parrish; Jeanette Cohen; Marie Anderson; Eleanor Blaser; Mary Ann Goforth; Esther Gottlieb; DeVeta Marshall.  
THIRD ROW: Alice Hoeltgen, Sergeant-at-Arms; Leoma McReynolds; Catherine Morano; Minnie Paladino; Elsie Dannenberg; Wanda Sullivan; Pauline Young; Gail Cunningham; Louise Swigert; Eugenia Wilds.  
SECOND ROW: Miriam Zittin; Rose Himmel; Louise Wineger; Edith Stolov; Lillie Fulton; Elva Larson; Thelma Larson.  
BOTTOM ROW: Ruth Evans, Critic-Reporter; Mathilde Schulz, Vice-President; Dorothy Calaban, Active President; Emma Fluderer, Honorary President; Alvena Kramer, Corresponding Secretary; Anne Karner, Treasurer; Glorian Mineo, Treasurer.

## BOYS' "M" CLUB

TOP ROW: Thomas Mortallaro; Manuel Sciortino; Robert Vaught; Kenneth Shanklin; Charles Ormsbee; Gerald Meeker; Russell Copeman; Bill Spillman.  
MIDDLE ROW: Raphael Doyle; Mike Grebowiec; Michael Lucito; Louis Caruso; Anthony Nigro; John Daleo; Sam Santoro.  
BOTTOM ROW: Melchior Enna, Sergeant-at-Arms; Bernard Cuba, Treasurer; Marvin Plaskett, President; Mr. McMurphey, Adviser; Herbert Knecht, Vice-President; Ross Moley; Vernon Randall.



# N A U T I L U S



## G I R L R E S E R V E S

TOP ROW: Nancy Fitzpatrick; Veta Piraro; Alvena Kramer; Glorian Mineo; Anna Karner; Marie Anderson; Pauline Grammens; Eva Simmons; Annie Chinn.  
THIRD ROW: Patricia Fitzpatrick, Interclub Council Girl; Marion Bob Rocheld; Marcella Bair; Opal Scott; Lillian Wright; Margaret Fowler; Mollie Dreiseszun; Sarah Bratt.  
SECOND ROW: Burnell Watson; Evelyn Boutross, Inter-racial Council; Ellen EHls; Louise Wineger; Edith Stoloy; Ruby Stoloy; Caroline Copulos; Mary Brizendine; Anna Faye Lee.  
BOTTOM ROW: Katherine Copulos, Publicity Chairman; Dorothea Ozar, Membership Chairman; Frances Powell, Secretary; Mathilde Schulz, President; Alice Hoeltgen, Vice-President; Ida Mae McCroskey, Treasurer; Margaret Boutross, Service Chairman; Ruth Evans, Song Leader.

## B O Y S ' H I G H S C H O O L C L U B

TOP ROW: Malcolm Davis; Vernon Rogers; Veto Enna; Herbert Knécht; U. S. Smith; Daniel Apra; Edward Kelley; William Cohen.  
SECOND ROW: Eugene Gordon; Henry Hall; Pat Hurley; Phil Mintz; Robert Meade; Theodore Kempter, Sergeant-at-Arms; Francis Palmer.  
THIRD ROW: Earl Vaught; Julio Silva, Manualite; Frank Allen, Treasurer; Robert Albritten; William Edwards; James Price; Birch Shepherd; Kenneth Shanklin.  
BOTTOM ROW: Ben Nicholas, Treasurer; Dwayne Smith, Vice-President; Paul Lambert, President; Mr. McMurphey, Adviser; Melchior Enna, President; David Goodman, Vice-President; Norman Tanquary, Sergeant-at-Arms; Hugh Kyle, Critic-Reporter.

*Thirty-Five*

# N A U T I L U S



## BURYTONIAN LITERARY CLUB

TOP ROW: Francis Kretchmar; Raphael Doyle; Carlos Rocha; David Epstein; Robert Forester; Isadore Mendelsohn; Howard Vanderman; J. L. Watson.  
 THIRD ROW: Jack Ellis; Anthony Gillotti; Bob Ratliff; Gladys Hulet; Virginia Tomlinson; Nina Underwood; Louise Steele; Maurine Buck; Alvina Floyd; Edna Poe.  
 SECOND ROW: Carl Birkes, Parliamentarian; Dean Litts, Sergeant-at-Arms; Annie Chinn, Historian; Catherine Morano; Margaret West; Elinor Hanson; Bertha Jaime; Nicola Ramirez;  
 BOTTOM ROW: Cleta Mae Mason, Reporter; Minette Capito, Secretary; Miss Bury, Adviser; Meyer Planzer, President; Buster Workizer, Vice-President; Josephine Lutz, Critic.

## ORCHESTRA

TOP ROW: Raphael Doyle; Malcolm Davis; James Tucker; Sam Nicotra; James Sallas; Gordon Roelofs; Herschel Tracy; Henry Milne; Nick Miller; Charles Kuhelm.  
 THIRD ROW: Meyer Planzer; Jack Schlichenmaier; Jack Mabel; Isadore Schwartz; Shannon Jones; Ralph Whitney; James Alexion; Bert McGuirk.  
 SECOND ROW: Elmer Tyndall; Alfred Parisi; Leo Sambursky; Pat Gunta; Francis Palmer; Clifford Canaday; Alex Cacioppo; Phineas Dreiseszun.  
 BOTTOM ROW: Billie Montgomery; Cleta Mae Mason; Ruthie Leo; Serena Tabolsky; Mr. Curth; Imogene McBee; Kathryn Smith; Louis Dubinsky.

*Thirty-Six*

1933



# NAUTILUS



## MANUALITE STAFF

TOW ROW: Edgar Riderburg; Herbert Knecht; Everett Lockwood; Henry Hall; Julio Silva; Howard McCubbin; Joe D'Angelo; John Williams.  
THIRD ROW: Edith Stolov; Bob Menor; Kathryn Tennyson; Esther Willhite; Leora Major; Louise Maycumber; Minnie Paladino; Virginia Tomlinson; Yvonne Riggs.  
SECOND ROW: Alvena Kramer; Dorothy Winkler; Rosemary Duff; Phyllis Lane; Josephine Lutz; Jennie Nikitouplos; Dorothy Shores.  
BOTTOM ROW: William Edwards; Agnes Lahtinen; Miss McDonna; Mr. Barrett; Helen LeGate; Dorothy Ross; Hugh Kyle.

## NEWSWRITERS

TOP ROW: Henry Hall; William Edwards; Ralph Benizio; Tom Rollins; Herbert Knecht; Veto Enna; Charles Andreano; Jimmie Alexion; John Williams.  
THIRD ROW: Charles Leach; Mary Ann Goforth; Sally Aks; Chloe Springer; Dorothy Howe; Alice Bates; Louise Wineger; Frances Hindman; Marie Scott; Leonard Rowland.  
SECOND ROW: Virginia Tomlinson; Yvonne Riggs; Winifred Fagg; Leoma McReynolds; Ethel Lagas; Clara Bell Jones; Edith Jacobs; Jeanette Levey.  
BOTTOM ROW: Marguerite Sherard; Lorena Lawson; Dorothy Winkler; Miss McDonna; Mr. Barrett; Louise Maycumber; Minnie Paladino.

*Thirty-Seven*



THE 1933

# NAUTILUS

## STAFF



ALICE HOELTGEN  
EDITOR IN CHIEF



ANNA FAYE LEE  
ASSOCIATE EDITOR



THOMAS ROLLINS



GOLDENE GOTTLIEB  
BUSINESS MANAGER



JACK LEACH  
ASSOCIATE EDITOR



PAULINE GRAMMENS  
PROOF READER



MELCHIOR ENNA



DOROTHY PARRISH



AGNES LAHTINEN



MARGIE MAE RHOADS



GEORGIA TIDRICK



FRANCES POWELL



HAZEL WRIGHT



PHYLLIS LANE



ELLOUISE GREEN



ELIZABETH ETHERTON



JANE DRAKE



LOUISE MAYCUMBER



KATHRYNNE JENNYSON



GAIL CUNNINGHAM



IDA MAE MCCROSKEY



GELENA KRAMOS



NATIONAL HONOR SOCIETY

TOP ROW: Howard McCubbin; Harry Statland; Hugh Kyle; Jack Leach; Dayton Ballard; Monte Lindwall.  
 THIRD ROW: Sarah Yelin; Miriam Zittin; Eleanor Fleitman; Eva Simmons; Esther Wilhite; Ida Mae McCroskey; Alice Hoeltgen.  
 SECOND ROW: Anna Faye Lee; Jane Drake; Angelina D'Maggio; Josephine Lutz; Agnes Lahtinen; Clo Brashear.  
 BOTTOM ROW: Margie Mae Rhoads; Elizabeth Etherton; Vera Benham; Cecilia Moraine; Ceola Oswald; Dorothy Parrish.

The goal toward which all pupils strive during their High School course is to become members of the National Honor Society. To be elected into this Society, the pupils must be outstanding in the qualities of scholarship, character, leadership, and service.

A committee, composed of members of the faculty, spend many hours in careful analysis of the candidates' High School records. They take into consideration both the scholastic averages and the activity achievements acquired in the course of four years.

The students elected into the Honor Society received their honor pins on May 24 in an impressive ceremony held before the student body in assembly. The qualities necessary for membership were personified by distinguished alumni. Jake Sokolovitz, in a white robe, administered the pledge. Laura Nicholas, in a black robe, acted as chaplain. Libbie Phillips, wearing a red robe, represented service and Jack Baughman, who wore a purple robe, represented leadership. Character was represented by Mary Lomax Iseman who wore a white robe, and Lamar Dye, in a yellow robe, represented scholarship. Four junior girls also assisted in the ceremony. They were: Winifred Fagg, Burnell Watson, Ellouise Green, and Marguerite Sherard.

MEMBERS

Dayton Ballard  
 Vera Benham  
 Clo Brashear  
 Elizabeth Lee Comer  
 Angeline D'Maggio  
 Jane Drake  
 Melchior Enna  
 Elizabeth Etherton  
 Eleanor Fleitman

Mike Grebowiec  
 Alice Hoeltgen  
 Hugh Kyle  
 Agnes Lahtinen  
 Jack Leach  
 Anna Faye Lee  
 Monte Lindwall  
 Josephine Lutz  
 Ida Mae McCroskey  
 Howard McCubbin

Cecilia Moraine  
 Ceola Oswald  
 Dorothy Parrish  
 Margie Mae Rhoads  
 Eva Simmons  
 Harry Statland  
 Esther Wilhite  
 Sarah Yelin  
 Miriam Zittin



CECILIA MORAINE  
SPONSOR MAJOR

PAUL LAMBERT  
MAJOR



HELEN HARRIS  
SPONSOR CAPTAIN



MATHILDE SCHULZ  
SPONSOR CAPTAIN



MARY FRANCES JAMES  
SPONSOR LIEUTENANT



THELMA LARSON  
SPONSOR LIEUTENANT





COMPANY "A"

TOP ROW: Norman Tanquary; Pat Hurley; Louis Perricone; Theodore Kempter; William Vanatta; Lawrence Gillihan; J. N. Ratliff; William West.  
 FIFTH ROW: Charles Leach; Robert Meade; Francis Kretchmar; Veto Enna; Carl Johnson; Vernon Rogers; Jack Morrow; Charles Andreano; Louis Caruso.  
 FOURTH ROW: Charles Hinkle; Garret Hansen; Clyde Gretzinger; Gene Burton; Bob Ratliff; Reuben Levine.  
 THIRD ROW: Adolphus Martinez; Joe Ciccio; Ralph Hoffman; Elmo Hargrave; John Bassett; Joseph Carrola.  
 SECOND ROW: David Goodman, Lieutenant; Leonard Connelly; Harry Sharp; Robert Mall; Joe Romano; Louis Schaeffer; Allen Tabolsky, Lieutenant.  
 BOTTOM ROW: Harold Herrick, Captain; Mary Frances James, Sponsor Lieutenant; Mathilde Schulz, Sponsor Captain; Cecilia Moraine, Sponsor Major; Paul Lambert, Major; Helen Harris, Sponsor Captain; Thelma Larson, Sponsor Lieutenant; Junior Brown, Captain.

The Reserve Officers' Training Corps, under the able instruction of Sergeant Fred Faust, have completed another successful year of military training and discipline.

On November 11, they took part in the Armistice Day Parade joining, with the other Kansas City high school battalions, in a march to the Liberty Memorial.

The next event in which they took part was the grand entry in the American Royal Stock Show, November 12.

The annual Corps Area Inspection by Major John M. Fray, Field Artillery, was held May 15. On Field Day, the next day, the Manual Battalion demonstrated its skill by winning third place. They also placed second in company drill, which was commanded by Cadet Captain Harold Herrick. Another honor was won when, under the command of Cadet Lieutenant Dwayne Smith, the Platoon placed first.

The Heart of America Post, No. 135, of the American Legion gave, as usual, medals to the three outstanding cadets of each school. At Manual, Cadet Vernon Rogers won first; second place went to Cadet Corporal Theodore Kempter; and third to Cadet Corporal George Hart. These cadets officially received their medals on Award Day, June 1. Cadet Captain Melchior Enna was presented a saber. Silver cups, won at the field meet, were then presented to the school by the respective commanders.



COMPANY "B"

TOP ROW: Norman Woodson; James Few; James Tucker; Ben Nicholas; Malcolm Davis; Robert Blankenship; Bert McAfee; Vincent Crawford; Harry Van Swearingen; Robert Forester.  
 SIXTH ROW: Erneste Richardson; Mason McPherson; Howard Vanderman; Norbert Renner; Birch Shepherd; Pete Copulos; Lester Mathany; Frank Allen; Julio Silva.  
 FIFTH ROW: William Cohen; Charles Newton; Meyer Planzer; Gordon Roelofsz; Phillip Mintz; George Daniels; L. D. Anderson; Louis Allen.  
 FOURTH ROW: Daniel Miller; John Ancona; Everett Lockwood; Herbert Rovick; Willard Stansbury; Richard Harrell; Henry Hall; George Hart.  
 THIRD ROW: Francis Palmer; Isadore Schwartz; Fred Jones; Ralph Younkin; Elva Graves; Solomon Mayor; Gilbert Brenner; Leonard Rowland.  
 SECOND ROW: Earl Vaught; James Sallas; Heinz Newman; Harold Ingram; Elton Ballard; Pete Nikitopoulos; Buster Workizer.  
 BOTTOM ROW: Melchior Enna, Captain; Dwayne Smith, Lieutenant; Mary Frances James, Sponsor Lieutenant; Mathilde Schulz, Sponsor Captain; Cecilia Moraine, Sponsor Major; Paul Lambert, Major; Helen Harris, Sponsor Captain; Thelma Larson, Sponsor Lieutenant; Claude Turner, Lieutenant; Junior Brown, Captain.

The outstanding social event of the school year, the R. O. T. C. Hop, was held on the evening of February 17. Sergeant Faust presented certificates of rank to all the cadet officers. The manner in which the Major and Sponsor Major were introduced to the audience was very unique and impressive. The Major, Paul Lambert, cut with his saber the paper framed by an arch. Through the arch, Paul emerged with the Sponsor Major, Cecilia Moraine. They were followed by the Sponsor Captains, Helen Harris and Mathilde Schulz, and the Sponsor Lieutenants, Mary Frances James and Thelma Larson. This group marched beneath another arch formed by sabers held by cadet officers. The ceremony was a perfect ending to a perfect evening.

The annual R. O. T. C. Circus was held on April 21. Manual cadets, commanded by Captain Enna, put on an exhibition of rifle exercises. Girls from some of the high schools took part in colorful dances and the Sponsor Majors were presented their capes.

The last R. O. T. C. social event of the year was the picnic, held at Swope Park. Games were played and hot-dogs were plentiful, so all who attended the picnic had an enjoyable time.



# NAUTILUS



## FOOTBALL TEAM

TOP ROW: Wallace Parker, Manager; Dr. E. L. Kirsch, Team Physician; William Cohen; Gerald Heffley; John Ibarra; Frank DiGiovanni; Walter Mueller; Charles Ormsbee; Kenneth Shanklin; David Goodman; Ralph Benizio; Junior Anderson; Sam Arelllo; Ralph Hoffman.  
THIRD ROW: Mr. McMurphey, Head Coach; Alex Nigro, Assistant Coach; Michael Lucito; Pat Hurley; U. S. Smith; Elmer Larson; Louis Perricone; Bernard Cuba; Carl Hamilton; Julio Silva; Anthony Nigro; Sam Santoro.  
SECOND ROW: Bud Campbell; Manuel Sciortino; Thomas Mortallaro; Harry Knecht; Melchior Enna, Captain; Mike Grebowiec; Herbert Knecht; William Spillman; Charles Weber; Raphael Doyle; William Edwards.  
BOTTOM ROW: Ross Moley; Russel Copeman; Robert Vaught; Vernon Randall.

## BASKETBALL

TOP ROW: Buddy Lambert, Cheerleader; Isadore Mendelsohn; Herman Mendelsohn; Lester Shartzler; Ralph Benizio; John E. Green; F. M. Gibson; Julius Rosen; Clem Fairchild, Cheerleader.  
MIDDLE ROW: Louis Dubinsky, Cheerleader; Louis Caruso; Joe Barone; Wade Williams; Bernard Cuba; Lawrence Licata; Anthony Nigro; Joe Lombardo, Cheerleader.  
BOTTOM ROW: Tom Mortallaro; Sam Santoro; Robert Vaught; Mr. McMurphey; Marvin Plaskett, Captain; Bill Spillman; Melchior Enna.





### GIRLS' BASKETBALL

TOP ROW: Maria Munoz; Wanda Sullivan; Lillie Fulton; Goldie Studna; Elsie Dannenberg, Sophomore Captain; Charlsie Farrell; Patricia Fitzpatrick; Mildred Woody; Jeanette Cohen.  
 THIRD ROW: DeVeta Marshall, Freshman Captain; Evelyn Boutross; Catherine Morano; Ida Dropkin; Christine Palmer; Dorothy Howe; Alice Bates; Leoma McReynolds; Millie Brown.  
 SECOND ROW: Minnie Elsenberg; Eleanor Blaser; Mary Ann Goforth; Dorothy Calahan, Manager; Avis Row; Maurine Buck; Geneva Bird, Junior Captain; Ida Mae McCroskey.  
 BOTTOM ROW: Alvena Kramer; Marie Anderson; Anna Karner; Reba Parrish, Senior Captain; Glorian Mineo; Frances James; Ruth Evans.

### GIRLS' ATHLETICS

This has been both an eventful and successful year for the girls' athletic department. Under the skilled direction of Dr. Helen Perkins, the various branches of sports have progressed most interestingly and also have produced many outstanding athletes. The upper classmen, as usual, were very enthusiastic, but this year a great many underclassmen became interested participants in the various sports and competition has been keen.

The basketball season brought forth the largest number of contestants. This sport seems to be developing more interest each year. Due to the splendid co-operation and friendliness of each player, the senior team again emerged victors of the tournament. Mary Frances James and Reba Parrish, centers, were, perhaps, two of the most outstanding players the department has had for many years. Some very definite promises of future stars have been suggested from the junior, sophomore and freshman teams.

Life-saving, also, was one of the sports which attracted a large group of girls. A great many underclassmen proved themselves to be as agile in the water as the seniors were.

Although basketball and swimming have occupied most of the attention of the members of the athletic department this year, volleyball, baseball and tennis have aroused enthusiasm and have provided exciting tournaments.



### DEBATE TEAM

TOP ROW: Morris Lerner; Jack Leach; Robert Forester; Gail Cunningham; Winifred Fagg; Mike Grebowiec.  
 MIDDLE ROW: Hugh Kyle; Paul Lambert; Herbert Knecht; Dwayne Smith; Reuben Levine; Clem Fairchild.  
 BOTTOM ROW: Eva Simmons; Sarah Yelin; Mr. Fairchild; Dorothea Ozar; Pauline Grammens; Anna Faye Lee.

This year has been a most successful one for Manual's Speaking and Dramatic Departments.

The members of the Debate Team have engaged in many exciting verbal battles with high schools, both in the city and out. The question debated was "Resolved, that at least one-half of all state and local revenue should be derived from sources other than tangible property." The debaters, by their effective debating, won for themselves a victorious record.

In the most outstanding speaking event of the year, the Constitutional Oratorical Contest, Jack Leach was awarded first place. Second place was won by Anna Faye Lee, and third place by Alvin Silver. Jack Leach had the honor of representing Manual at Convention Hall, and he made the school exceedingly proud of him by winning second place in the city-wide contest.

Jack Leach scored again in the speaking field by being the winner of the school's Extemporaneous Contest. Second place was won by Clem Fairchild.

Frank Schlozman and Virginia Cox were the winners of first place in the Freshman-Sophomore Oratorical and Declamation Contests.

The winners of the Boys' and Girls' Oration Contests were Morris Lerner and Gail Cunningham; Paul Lambert and Geneva Kramos were close seconds to the winners.

The annual Boys' and Girls' Declamatory Contests were won by Morris Lerner and Anna Faye Lee. The winners of second place were Jack Leach and Dorothea Ozar.

The Dramatic Department presented this fall a three-act comedy, "Cappy Ricks." In the spring they presented two one-act plays, "Who's the Boss" and "Proposal Under Difficulty." The outstanding dramatists this year have been Jack Leach, Paul Lambert, Anna Faye Lee, Thelma Larson, Eva Simmons, and Dwayne Smith.

NAUTILUS CALENDAR, 1933

Sept. 6—Hooray! We're back in dear old Manual once more! It seemed as if today would never get here, but at last it did, and here we are! And are we happy! Mr. Lamar had an assembly to explain our new lunch box system, and we think it's great! We certainly do have a lot of students from other states. California, even! And Coach has started football practice already. He isn't going to lose any training time, either, because we're out to win, this year!

Sept. 17—You may be quite certain that many, many Manualites know more about the Constitutional Convention after tonight, even if it was so hot we could hardly breathe.

Sept. 23—We had our first football game with Pembroke. We lost, but just wait until we get warmed up!

Sept. 27—The Girl Reserves' Treasure Hunt was a "rip-snorting" success! The treasure was big, luscious, chocolate pieces-of-eight, covered with gold foil.

Oct. 1—This is the day of our first Inter-scholastic League game, and Paseo beat us, 10-6. But we've improved a lot, regardless, and we really had everyone scared! Just watch our dust!

Oct. 7—Clubs and societies have started out on this year's expedition. Things are doing!

Oct. 15—There Now! Didn't we tell you we were out to win? We beat Northeast! It's our first winning game in a couple of years, but there'll be many more, now! And we had a marvelous bonfire to celebrate the event, at the parade, where we couldn't disturb the peace so much!

Oct. 22—Again we triumphed! We're especially happy this time, because we beat our age-old enemy, Central!

Nov. 4—We had a really lovely, quiet, and impressive Armistice assembly, and everyone was made to feel the seriousness of its influence.

Nov. 30—What a busy day this has been! First the Girl Reserves gave a clever short play about their club in Assembly, then we had little suckers in our box lunches, to make us feel very grown-up!

Dec. 2—Tonight we had our marvelous three-act play, "Cappy Ricks," given by our Dramatic Department. Jack Leach, in the title-role, was the marvelous actor of the night, and Lawrence Earhart, as the brave, upstanding young hero made many young ladies in the audience sigh audibly as well as dreamingly. Thelma Larson, as the heroine, made a conquest of mostly male hearts.

Forty-Six

JOHNSTON'S  
HIGH GRADE  
CHOCOLATES

Price Ranges to Suit  
These Times

McPIKE DRUG CO.

KANSAS CITY  
SCHOOL OF LAW

*Thirty-ninth Year*

SEPTEMBER TERM OPENS in Our  
Spacious New Building at  
913 Baltimore Ave.

Offers a practical and thorough legal education. Faculty consists of judges and leading lawyers of the Kansas City Bar. Federal jurists have been added to the faculty. Students may enter law offices or be otherwise employed, and observe the trial of cases in court, under supervision of the faculty, thus gaining practical experience while taking their law course. Adequate library privileges in our building.

POST GRADUATE AND PUBLIC  
SPEAKING COURSES  
Write for catalogue giving full  
information.

*Executive Offices*

K. C. SCHOOL OF LAW BLDG.  
913 Baltimore Ave.  
KANSAS CITY, MISSOURI



**Dec. 21**—Another keen mixer, this time with peppermint poles given to all the dancers, by Santa Claus in person! And when Mr. Dixon was given a present of a bottle of toilet water, you should have seen him blush!

**Dec. 23**—A grand time was had by all at the joint meeting of the Art Society and the Girls' "M" Club, in a kid party. You should have seen those dignified officers — including Gerald McCartney — running around in kiddie clothes! Well, so long, everybody, we'll see you next year!

**Jan. 13**—Five girls were made mighty happy today when they were chosen sponsor lieutenants of the R. O. T. C.

**Jan. 17**—Well, the semi-annual slaughter begins—that of course could only mean exams for the first term!

**Jan. 19**—Whew! Whew twice! Are we glad that's over! Now we have only to look forward to the same experience next May for more lovely exams! Pleasant thoughts!

**Jan. 23**—And the report cards show how well we've learned our lessons this year. Will Mother and Dad be pleased?

**Jan. 30**—The faculty made three of our sponsor lieutenants sponsor captains.

**Feb. 6**—The Student Council elect "Buddy" Lambert president. Some people certainly have good choice, especially those student "reps"!

**Feb. 8**—Our own Johnnie Long left for sunny California. "California here he comes!"

**Feb. 14**—Ahem! Our second team shows its colors today and defeats Southwest.

**Feb. 17**—There was a tense silence in the gym tonight before Sergeant Faust would tell us who was Sponsor Major!

**Feb. 21**—Manual debates those fiery Westporters. Wasn't Clem Jr. brave?

**Feb. 23**—Jack Leach held everyone spell bound with his oration that won \$10. Anna Faye almost out-talked Jack and did succeed, in winning the second prize of \$5.

**Feb. 25**—The Hi-Y and G. R. party resulted in much fun, many new acquaintances, and several black eyes.

**Mar. 3**—Boys' "M" Club gave a gym show and we all enjoyed the match between Dave (Tarzan) Grider and Gerald (Goliath) Meeker, those big "he-mans."

**Mar. 17**—Initiation day.

**Mar. 23**—The seniors elect "Beans" president.

**Mar. 24**—Those insignificant juniors select the "cream of the crop" for class officers.

COMPLIMENTS OF  
INTER-COLLEGIATE PRESS

THE  
GUIDE  
TO



HIGH  
GRADE  
FOODS

**QUALITY**  
IS THE FIRST REQUISITE  
OF SOUND ECONOMY

The *Best Foods* you can buy are the most economical in the end. The *Lee Trade Mark* is your assurance of *Highest Quality*, the pleasure of good living—sound economy!

*The Lee Trade Mark is the Guide to More than 300 High Grade Foods*

Forty-Seven

Mar. 31—Sophomores joined in the game and chose Frank Schlozman (the people's choice) as president.

Apr. 6—A gym show whose proceeds went to the Nautilus.

Apr. 7—Weren't we all proud of Jack representing us in the city finals?

Apr. 14—A holiday!

Apr. 24—Picnics and more picnics.

May 1—Girl Reserves have a Mothers' Tea and a senior farewell.

May 19—Those juniors show the seniors a swell time at the "Prom."

May 26—Class day!

June 6—Seniors leave with joys and regrets! Auf Wiedersehen, au revoir, adios, abyssinia, goodbye everybody.

FEATURES OF AN IDEAL GIRL

- The smile of Pauline Grammens
- The eyes of Lydia Dolton
- The form of Winifred Fagg
- The clothes of Filipa Nigro
- The sweetness of Margie Mae Rhoads
- The friendliness of Anna Faye Lee
- The brains of Cecilia Moraine
- The voice of Mary Frances James
- The willingness of Leora Major
- The perseverance of Dorothy Ross
- The hair of Ida Belle Smith
- The complexion of Helen Harris

FEATURES OF AN IDEAL BOY

- The physique of Melchior Enna
- The strength of Herbie Knecht
- The clothes of George Guastella
- The voice of John Rogers
- The eyes of Charles Leach
- The smile of Jack Leach
- The hair of Buddy Lambert
- The brains of Howard McCubbin
- The friendliness of Joe Lombardo
- The perseverance of Theodore Kempter

SENIOR "EST" FAMILY

- Tallest .....Marvin Casteel
- Shortest .....Dayton Ballard
- Thinnest .....Imogene McBee
- Fattest .....Ellen Ellis
- Quietest .....Louis Dubinsky
- Noisiest .....Audrey Florea
- Jolliest .....Marcella Brown
- Solemnest .....Ruth Cassity
- Darkest .....Elizabeth Etherton
- Fairest .....Esther Gorman

MODERN TYPOGRAPHY  
 COLOR PRINTING  
 DIRECT ADVERTISING  
 CATALOGS  
 HOUSE ORGANS  
 MAGAZINES  
 BOOKS

Printers of  
 The NAUTILUS

THE LOWELL PRESS

VA 4474  
 3017 Main St.

INSEPARABLE

- Elizabeth Etherton and Margie Mae Rhoads
- Veto Enna and Herbie Knecht
- Nellie Vanson and Stella McGee
- Jack Leach and Howard McCubbin
- Anna Faye Lee and Pauline Grammens
- Buddy Lambert and Melchior Enna
- Eva Simmons and Leora Major
- Geneva Kramos and Gail Cunningham
- Lydia Dolton and Edith Funkhouser
- Memeory Dumas and Marguerite Renkert
- Shannon Jones and Ralph Whitney
- Virginia Konkel and Cecilia Moraine
- Erneste Richardson and Earl Wither-  
 spoon

Mr. Fairchild: What is the great difference we notice when water changes to ice?

Birch Shepherd: The difference in price.

This year, under the kind and able leadership of our principal, Franklin S. Lamar, the Nautilus Staff has worked faithfully and earnestly in publishing an annual which we trust all students will be proud to possess. The staff wishes to extend its sincerest thanks to Mr. Lamar for his patience in working with us and helping us to produce the book.

**FINLAY ENGINEERING COLLEGE**

*Chartered by the State of Missouri*

Complete courses in Electrical, Mechanical, Architectural and Structural Engineering of one and two years, leading to diploma and degree, respectively. Shorter, special courses in Practical Electricity, Power Plant Operation, Radio, Television, Sound, Electrical Refrigeration, and Electrical, Mechanical, Architectural and Structural Drafting. Practical-Technical Engineering Essentials taught. Close contact of student and teacher. For thirty-five years Finlay has successfully trained men for the engineering profession. Write or call for catalog. Day and evening sessions. *Visitors welcome.*

10th and Indiana

Benton 0295

**TO PROTECT Your Eyes**

**You Should Have a**

**REFLECT-O-LAMP**

**Indirect Lighting**

**Is Your Protection**

**KANSAS CITY POWER & LIGHT CO.**

Baltimore at 14th Street

**KANSAS CITY, MISSOURI**



HENRY MOORE

*Maker of*

PHOTOGRAPHS THAT PLEASE

Eleventh and McGee

*Official Photographer*  
1933 NAUTILUS

## 38 YEARS

This Company has had an unbroken record  
of EXCELLENCE in the field of Life Insurance  
*for Thirty-Eight years.*



### KANSAS CITY LIFE INSURANCE COMPANY

3520 Broadway  
KANSAS CITY, MISSOURI

### JACCARD'S SERVICE TO HIGH SCHOOLS

PINS, RINGS, EMBLEMS, *and* TROPHIES  
for any department of school activity. Engraved invitations and  
Announcements for all student organizations and senior classes.  
All giving the JACCARD touch of distinction and originality.



### JACCARD JEWELRY CORPORATION

1017-19 WALNUT STREET

Miss McDonna: Everett, use the word "afford" in a sentence.

Everett Lockwood: My dad has a Ford.

Herbie Knecht was riding in an airplane in Chicago once. He lost the set out of his ring and immediately began looking for it. Finally he said: "There it is, pilot; let's go down and get it."

The pilot said: "Sit down, sit down, boy, that's Lake Michigan."

Miss Hutchison: How many of you girls have helped on this poster?

Louis Dubinsky: I have, Miss Hutchison.

Jack Frogue had just arrived in Scotland. When he saw a deep sea diver come up, Jack scratched his head and said: Gee, why didn't I think? I could have walked over, too.

Miss James: (tasting soup) This soup tastes rather funny, Joanita.

Joanita Nigro: It hadn't ought to; I burnt it a little, but I put some Unguentine in it.

Ruth Cassity: Do you like cod-fish balls?

Leora Major: Well, really now, I never attended one.

Ben Nicholas: I'm just about finished with these lawn seats. I want some finishing nails.

Mr. Long: How long do you want them?

Ben: Oh, I want to keep them!

Mr. Fairchild (finishing lengthy talk) Now, are there any questions you would like to ask about the Arctic?

Ethel Cabbage: What makes the Arctic?

Esther Gorman: What do you say, "Humorous" or "Umorous"?

Agnes Lahtinen: Neither, I say funny.

Phil Mintz: Mr. MacCurdy, what is an adjacent angle?

Mr. MacCurdy: Oh, that's just another case of one thing after another.

The boy who writes the best love letters doesn't necessarily make the best husband.

SCHOOL DAY SWEETHEARTS

Ida Mae McCroskey . . . . Dayton Ballard  
 Alice Hoeltgen . . . . Lawrence Earhart  
 Helen Harris . . . . Frank Allen  
 Pauline Grammens . . . . Erneste Richardson  
 Mathilde Schulz . . . . Norman Tanquary  
 Anna Faye Lee . . . . Howard McCubbin  
 Cecilia Moraine . . . . Pat Hurley  
 Marcella Bair . . . . Junior Brown  
 Lydia Dolton . . . . Robert Forester  
 Edith Funkhouser . . . . Mike Grebowiec  
 Ceola Oswald . . . . Dave Goodman  
 Dorothy Parrish . . . . Gene Johnson  
 Pearl Weinstein . . . . Max Webb  
 Thelma Larson . . . . Wayne Boring

Orville Howard: How much gas do we have, Buddy?

Paul Lambert: Egad, Howie, my boy! It points to one-half, but whether the bally thing means half full or half empty, I don't know.

Salesman Louis Dubinsky asked our Scotch farmer, Howard Lipps, to buy a bicycle. "They are cheap now and I can let you have a good one for seven pounds."

"I would rather put the money in another cow," replied Howard.

"You would look mighty foolish riding 'round your farm on a cow, now wouldn't you?" inquired Mr. Dubinsky.

Said the Scotch farmer: "No more foolish than I would milking a bicycle!"

Mr. Laury: Three thousand, four hundred and twenty-six elephants were needed last year to make billiard balls.

Max Webb: Isn't it wonderful that such great beasts can be taught to do such delicate work?

Mr. Kizer: Did your mother write this essay on "Why I Love Teacher?"

Clyde Davis: No she didn't. Dad stopped her!

In these fickle times, a love affair seldom outlasts one application of lipstick.

The law is that a girl may marry without parental consent if she is eighteen, but she can't vote until she is twenty-one. Indicating that it takes more brains to vote than it does to manage a home and children.



N A U T I L U S

---

AUTOGRAPHS

*Fifty-Three*

---

1933

N A U T I L U S

---

AUTOGRAPHS

*Fifty-Four*

---

1933

N A U T I L U S

---

AUTOGRAPHS

*Fifty-Five*

---

1933



N A U T I L U S

---

AUTOGRAPHS



*Fifty-Six*

---

1933

