



THE
LINCOLNIAN
1951





O, LINCOLN HIGH

Oh that some angel voice was near,
Forcing these notes of gladness,
To chase all silence from the air
That fills our hearts with sadness;
For glad some notes our lips would breathe of
Lincoln, dear old Lincoln,
For glad some notes our lips would breathe of
Lincoln.

O, Lincoln High, Lincoln High,
Thou'rt our guiding hand we stay,
Thy memories will cheer the way;
O, Lincoln High, O, Lincoln High,
O, Lincoln High, O, Lincoln High.

In fairy halls we see thy walks,
Her sunshine plays upon you,
Her vapors linger round thy walls,
Like ghosts of love so true;
Like treasured dreams of times long past
In Lincoln, dear old Lincoln,
Like treasured dreams of times long past at
Lincoln.

LINCOLN
HIGH SCHOOL

Foreword

This yearbook is dedicated to the graduates of Lincoln serving in the armed forces whether at home or overseas. We also dedicate this book to those boys now enrolled in Lincoln who face the prospect of serving the cause of freedom under the stars and stripes. We, the class of 1951, are not unmindful of the responsibilities which face all young people everywhere in freedom loving countries. We go forth into an uncertain future with determination to give our all to the cause of the right and courage to face the future whatever danger lies ahead.

Contents

Administration

Faculty

Seniors

Juniors, Sophomores, Freshmen.

Administration



EARL D. THOMAS
Dean of Junior College
Principal of High School
M.A. University of Chicago



MRS. ANN JOHNSON, COUNSELOR
B.S. University of Cincinnati



CHARLES B. WEST
Vice-Principal
M.S. University of Michigan



GIRARD T. BRYANT
Asst. Dean of Junior College
M.A. University of Kansas

Faculty



ANDERS, SGT. TYREE

ANDERSON, CHESTER
B. S. State Teacher College,
Pittsburg, Kansas.

ARNOLD, ROBERT ELLEN



BARKER, WILLIAM
B. A. Lincoln University,
Jefferson City.

BURNETTE, THEODORA S.
A. M. University of Michigan

CAMERON, JERIMIAH
M. A. University of Chicago.



CARUTHERS, PERCY
A. M. University of Kansas

CHEROT, NAOMI
M. S. University of Kansas

COLEMAN, IONE
School Nurse



DARTON, JR., ANDREW W.
B. S. Lincoln University

DIXON, EVA L.
M. S. Iowa State College

DONALDSON, BETTY LOU
B. A. University of Kansas



DUNLAP, W. D.
M. A. University of Chicago

FOREMAN, BETTY
B. S. Kansas State Teachers'
College, Pittsburg, Kansas

HARDIMAN, MINEOLA B.
M. A. University of Iowa

Faculty



HAWORTH, RUTH
M.S., Kansas State Teachers'
College, Emporia, Kansas
HERRIFORD, NEAL F.
M.A., Harvard University
HOPKINS, GLEE J.
M.S. Iowa State Teachers
College



JACKSON, VIRGINIA F.

JEFFRIES, JAMES A.
A.B., Tufts College
KIRKPATRICK, PERRY R.
B.S. Kansas State Teachers,
Emporia



LEE, OWEN G.
M.A., Fisk University
LYNK, MABLE S.
B.S., Prairie View State College
LYNK, JR., WILLIAM A.
M.S., University of Michigan



McCREARY, JAMES
A.B., Lincoln University
MASON, LENEL
B.S., Lincoln University
MILTON, JR., SGT. GRANT



NEAVES, ANTRONETTE E.
B.A. University of Kansas
NOLAN, ROSETTA E.
A.B. Columbia University
PARKER, NORVAL G.
M.A., University of Kansas

Faculty



PENNINGTON, MILDRED F.
A.B., University of Kansas
PONDER, LUKE H.
M.A., University of Kansas
RANDOLPH, ROBERT EMORY
M.S., New York State College
for Teachers



SMOTHERS, TRUSSIE
M.A., University of
Kansas
STRICKLAND, EUNICE RAE
B.A., Langston University
TILLMON, W.R.
A.M., University of Kansas



WASHINGTON, EDMUND D.
A.M., University of Indiana
WHITE, JOHN R.
M.S.
WHITE, WILLIAM H.



WHITEMORE, CALVIN
B.M., De Paul University,
Chicago, Ill.
WILSON, ELOISE
WILSON, LAWRENCE
M.A., Northwestern University



HENRY, NANCY

NEWSOM, DELLA A.
A.B., Denver University
SMITH, ELLA V.
M.A., University of Kansas
THOMPSON, BARBARA PULLAM
A.B., Lincoln University
TIGNER, WILLIE M.

NO PICTURES

HUBBARD, N.Q.
A.M., University of Nebraska
JACKSON, R.H.
Wilberforce University

WILLIAMS, JOHN S.
B.A., University of Omaha
WYNBUSH, OCTAVIA
A.M., Columbia University



JUNIORS

Seniors



ADAMS, MARY — Booster Club '47 . . . ALLEN, CAROLYN — Majorettes '48-'50, Intramural Sports '47-'51, Vice President Spanish Club '49-'50 . . . ANDERSON, JAMES B. — R.O.T.C. '47-'51, Dramatics '50-'51, Spanish Club '50-'51, Modern Homemakers of America '50-'51.



ANTHONY, ELLA — Science Club '49, French Club '49, Chorus '48-'50, Y-Teens '48-'50, Orchestra '48-'50 . . . ARMSTRONG, BARBARA — Y-Teens '47-'51, Chorus '50-'51, Boosters '47-'48, Intramural Sports '49 . . . ARTERBERRY, CARL — Chorus '47-'51, Boys' Glee Club '47-'50, Bi-Phy-Chem Science Club '49-'51, Chemistry Club, Lettermen's Club, Football '48-'50, Perfect Attendance Award '47-'48, English Award '47-'48.



BAKER, RUSSELL — R.O.T.C., Band . . . BARKER, MERLA C. — Pres. Spanish Club '49-'50, Chorus '48-'50, Cheerleader '48-'50, Chemistry Club '50-'51, Callo-type Staff '50-'51, Pres. Y-Teens '50-'51, Pres. Americana Co-Eds '50-'51, Akapals '49-'51, Honor Roll '49-'50 . . . BAZADIER, FRANK.



BECK, ORA LEE . . . BERRY, VIRGIL LEE . . . BLACKWELL, RONALD — Student Council '48-'51, Bi-Phy-Chem Science Club '49-'51, French Club '48-'51, Corridor Guides '47-'48, Officers' Club '50-'51, Chemistry Club '50-'51, Thespians' Club '50-'51, R.O.T.C. '47-'51, Pres. Del Magnas '50-'51, Honor Roll '49-'50.



BOGART, ROBERT . . . BROWN, BETTY J. — Spanish Club '49-'50, C.O.E. '49-'51, Glee Club '48-'49, Chorus '48-'49, Perfect Att. '48-'49 . . . BROWN, MARTHA — Majorettes '47-'51, Del Sprites '49-'51.



BROWN, WILLIAM C. — R.O.T.C. '47-'50, French Club '48-'50, Science Club '49-'51, Art Club '48-'50, Redael Club '49-'51, Honor Roll '47-'51, Yearbook Staff, National Honor Society '50, English Award '47-'50, Perfect Att. '49-'50, Quill and Scroll '50, Art Award '49, Major Regimental Staff of Kansas City '50, French Award '50, Cartoonist, Callo-type '49-'50, Pres. Redaels '50-'51, Vice Pres. Bi-Phy-Chem Science Club '49-'50 . . . BUCHANAN, SHIRLEY . . . BUFORD, CAROL LEE — C.O.E. '50-'51, Cheerleader '48, Boosters '47-'49, Intramural Sports '47-'51, Y-Teens '47.



BUIE, GENE — Redaels '48-'51, R.O.T.C., Football, Track . . . BURTON, CONSTANCE — Spanish Club '49, Chorus, Glee Club '48 . . . BULLER, ALTA MAE — Cheerleaders '47-'48, Majorettes '48-'51, Y-Teens '47-'48, Akapals '48-'50, Americana Co-Eds '50-'51, Perfect Attendance Award '47-'48, Majorette Letter '48-'51, English Award '47, Secretary Class '47-'50.

Seniors

CALDWELL, DOROTHY - Chemistry Club '50, Spanish Club '50, Chorus '48-'50, Corridor Guides '48-'49, Boosters '48-'50, Callotype Staff '50-'51, Glee Club '49, Intramural Sports '48-'49, Y-Teens '48-'50, Rho Club '48-'51, Honor Roll '48-'49, English Award '48-'49 . . . CALDWELL, SHIRLEY - Art Club . . . CAMPBELL, STANLEY - Chemistry Club '50-'51, Spanish Club '49-'51, Student Council '49-'51, "L" Club '50-'51, Football '47-'51, Track '48-'51, Marathon Club '49-'51, Redaels '48-'51, Hi-Y '48-'50.

CARTER, MARGARET - Chemistry Club, Bi-Phy-Chem Science Club, Boosters, Spanish Club, Yearbook Staff, Akapals '48-'51, Orchestra, Intramural Sports, Americana Co-Eds, New Homemakers '47-'49, Honor Roll '47, Perfect Att. '47-'49, English Award '47-'49 . . . CHANDLER, MAMIE . . . CHATMAN, MARY ANN - French Club '49-'51, Bi-Phy-Chem Club '50-'51, Chemistry Club '50-'51, Del Sprites '49-'51, Y-Teens '48-'51, Perfect Att. '49-'51, Honor Roll '49-'50.

CLAYTON, LEONARD - Spanish Club . . . COATES, JOAN ELLA - Chemistry Club '50-'51, Art Club '49-'51, C.O.E. Club '50-'51, Corridor Guides '48-'49, Boosters '47-'48, Glee Club '49-'50 Intramurals, Y-Teens '47-'48, Perfect Att. . . . COLE EUGENE - "L" Club, Football '48-'51, French Club.

CONLEY, DELORES - Bi-Phy-Chem Science Club '49-'51, Chemistry Club '50-'51, Girls Glee Club '49-'50, Chorus '49-'50, Dramatics Club '50-'51, Y-Teens '50-'51, Del Sprites '49-'51, English Award '47-'48, Perfect Att. '48-'49 . . . CRAVENS, BARBARA - C.O.E., Chorus . . . CREASMAN, JAMES - R.O.T.C. '47-'51, Student Council '50-'51.

CULLIVER, LOUIS - R.O.T.C. '49-'50, Spanish Club '50-'51, Hi-Y '48-'49 . . . CUNNINGHAM, DOSS - Chorus '49-'51, Spanish Club '49-'50, Art Club '47-'48, English Award '48 . . . CUNNINGHAM, EASTER - Art Club '48-'49, Girls Glee Club '50, Boosters '50-'51, Chorus '50-'51, Dramatics Club '48-'50, Y-Teens '50-'51.

DAVIS, JOHN - Spanish Club '50-'51, R.O.T.C. '48-'49, Chorus '48-'51, Perfect Att. Award '47-'50 . . . DE LOISTED, VERNON G. - Rifle Team, R.O.T.C. . . . DONALDSON, EVERETT.

DOUGLAS, THOMAS M. JR. - Marathon Club, Boys Glee Club, Chorus, Perfect Att. '47-'49 . . . ELLIOT, FLOYD - Marathon Club '48, Art Club '48, Perfect Att. '47-'48, Art Award '48 . . . EVANS, JUNUETTE - School Chorus '48.



Seniors



EVANS, KATHRYN ROSE — French Club '48-'50, Bi-Phy-Chem Science Club '49-'51, Chemistry Club '50-'51, New Homemakers of America '48-'49, Dramatics '50-'51, Y-Teens '50-'51, Del Sprites '48-'51, Honor Roll '47-'51, National Honor Society '49-'50, Treasurer of Junior and Senior Class '49-'50 and '50-'51, Vice Pres. of Science '50-'51, Athletics Award '47-'51, Vice Pres. Del Sprites '49-'50, Perfect Att. Award '47-'51, Student Activities Committee '50-'51, Treasurer of French Club '49-'50, Student Council '50-'51, Inter-City Student Council '50-'51, Speech Award '47-'48, Editor-in-Chief of Yearbook, Pres. of New Homemakers of America '48-'49, French Honor Pin '50, Honor Pin '47 . . . FITCH, BARBARA JOANN — Rho Club '50-'51, Majorette '49-'51 . . . FLOWERS, CHARLES C. — French Club '49-'51, Honor Roll '47-'49.

FORD, BERTHA C. — Chorus, Girls' Glee Club, Spanish Club, Y-Teens . . . FORTMAN, ISSAC JR. — Letterman Club '49-'51, Hi-Y '49, Marathon Club '47-'48, Band '48-'49, Football '49-'51 . . . FRAZIER, WILLIAM L. — Bi-Phy-Chem Science Club '49-'51, R.O.T.C. '47-'51, 1st Lt. and Asst. Instructor, Basketball '50-'51, Senior Activities Committee '50-'51, Yearbook Staff Photographer '50-'51, School Photographer '50-'51, Photography Club '50-'51, Marathon Club '48-'49.

FREEMAN, ANGELA — Press Club '49-'51, Bi-Phy-Chem Treasurer '50-'51, Student Council '47-'50, American Junior Red Cross Council, New Homemakers of American '47-'48, Quill and Scroll '49-'51, Managing Editor Callotype '49-'50, Akapals '49-'51, Honor Roll '48-'50, English Award '47-'48, . . . FREEMAN, GWENDOLYN ELAINE — Student Council '47-'49, Homemakers of America Club '47-'48, Latin Club '48-'49, French Club '50-'51, Bi-Phy-Chem '49-'51, Vice Pres. of Junior and Senior Class, Yearbook Staff, President of Chemistry Club '50-'51, Dramatics '49-'50, Intramural Sports '47-'50, Akapals '48-'51, Pres. of Akapals '50-'51, Y-Teens '47-'51, Pres. of Y-Teens '49-'50, Vice Pres. Inter-Club Council, Honor Roll '47-'51, National Honor Society '49-'51, English Awards '47-'50 . . . GATLIN, HAROLD — Student Council '49-'50.

GIBSON, DONALD BERNARD — Student Council '47-'51, Pres. Student Council '49-'50, Vice Pres. of Student Council '50-'51, All-City Student Council '48-'51, Pres. All-City Student Council '50-'51, Manager of Student Mayor '50, Pres. Jackson County Jr. Red Cross '49-'50, Yearbook Staff, Parliamentarian of Bi-Phy-Chem Science Club '49-'51, Inter-City Student Council '50-'51, French Club '50-'51, L-Club '50-'51, Marathon Club '47-'48, Pres. Freshman Class '47-'48, Pres. of Soph. Class '48-'49, Pres. Junior Class '49-'50, Pres. of Senior Class '50-'51, Chairman Student Activities Committee, Pres. of Redael Club '49-'50, English Award '47-'50, National Honor Society '50-'51, Track Letters '48-'50, Perfect Att. '47-'51, Honor Roll '47-'51, Honor Pin '47 . . . GILES, ERMA GAYNELLE — C.O.E. '50-'51, French Club '50-'51, Girls Glee Club '48-'49, Chorus '49-'50, Student Council '48-'49, Intramural Sports '48-'50 . . . GLEASON, ERNESTINE.

GRAHAM, ANN — Honor Society '50-'51, Honor Roll '47-'51 . . . GRAHAM, BERTHA JOYCE — Girls Glee Club '47-'48, Y-Teens '47-'50, Honor Roll '47 . . . GREGG, MARJORIE J. — Girls Glee Club '47-'48, Chorus '48-'49, Y-Teens '48-'49.

GRIDER, ROBERT — Basketball '47-'51 . . . GUINN, LOIS M. — C.O.E. Club '50-'51, Chorus '47-'48, Y-Teens '47-'48 . . . GUNTER, GURNIE — Hi-Y '49-'50, Basketball '48-'51, "L" Club '50-'51, R.O.T.C. '48-'51.

HANDY, MARY HELEN — Callotype Staff '50-'51, Intramural Sports '47-'51, Perfect Att. '47-'49, Intramural Sports Award '48 . . . HARMON, MYLENE — French Club '50-'51, Chemistry Club '50-'51, Bi-Phy-Chem Science Club '49-'51, Y-Teens '47-'48, Perfect Att. '47-'48 . . . HARPER, MAE E. — Spanish Club '49-'50.

Seniors

HARRIS, GWENDOLYN — Bi-Phy-Chem Science Club, Thespians Club, Press Club '49-'50, Callotype Staff '49-'50, Yearbook Staff, Quill and Scroll, Y-Teens '50-'51, Quill and Scroll pin '50, Dramatics Award '50, English '47-'50, Perfect Att. '47-'50, Honor Roll '47-'50, Student Council '47-'48, . . . HARRIS, MARY ELLEN — Intramural Team '47-'51, Perfect Att. '47-'51, Intramural Award '49-'50 . . . HARRIS, WILLIAM D. — Bi-Phy-Chem, Spanish Club '49-'50, Marathon '47-'48, Yearbook Staff, Redael '49-'51.

HARVEY, MARGEURITE — Cheerleader '47-'49, Y-Teen '47-'49 . . . HAWKINS, ROXETTA — C.O.E. Club '50-'51 . . . HENDERSON, LESTER.

HENDRICKS, MAE JUANA — Y-Teens '47-'51, C.O.E. '50-'51, Spanish Club '50-'51, Chorus, Girls Glee Club '47-'51, Majorettes '47-'51, Boosters '47-'48, Intramural Games '47-'51, Perfect Att. '47-'48 . . . HENDRICKS, MAURICE . . . HENRY, ALVIN — French Club '48-'51, Chemistry Club '50-'51, Dramatics Club '50-'51, Chorus '48-'51, English Award '47.

HENSON, GUSTAVIA — Pres. Rho Club '49-'51, Americana Co-Eds '50-'51 . . . HERRING, WESLEY — Football . . . HIGHTOWER, JANIS — Spanish Club '50-'51, Bi-Phy-Chem Science Club '49-'51, Student Council '48-'49, Akapals '48-'51, Americana Co-Eds '50-'51, Y-Teens '50-'51, English Award '47, Speech Award '47, Honor Pin '47, Perfect Att. '47.

HOLMES, ERVENE — Girls Glee Club '47, Spanish Club '50-'51, Y-Teens '48-'50 . . . HOWARD, HELEN — Y-Teens '49-'50, C.O.E. Club '50-'51, Girls Glee Club, Callotype Staff '50-'51 . . . HUNT, CLARICE.

HUNTER, DELORES . . . HYDER, EARLEEN — Chorus '48-'49, Homemakers of America Club '48-'49 . . . JOHNSON, ALBERTA K. — French Club '50-'51, Girls' Glee Club '48-'49, Y-Teens '48-'49.

JOHNSON, BERNADINE HELEN — Chorus '47-'51, Corridor Guide '47-'49, Student Council '47-'49, Junior Red Cross '47-'49, Chemistry Club '50-'51, Bi-Phy-Chem '49-'51, Dramatics Club '50-'51, Y-Teens '47-'51, Rho Club '49-'51, Latin Club '50-'51, Perfect Att. '47-'48 . . . JOHNSON, DELORES FRANCES — Spanish Club '49-'51, Booster '47, Honor Roll '47-'48 and '49-'51, Del Sprite Club '48-'51, Y-Teens '47-'51, English Award '47 . . . JOHNSON, DOROTHY.



Seniors



JOHNSON, JOYCE ELAINE - Chemistry Club '50-'51, Bi-Phy-Chem Science Club '49-'51, Spanish Club '48-'49, Student Council '48-'49, Corridor Guide '48-'49, Callotype Staff '50-'51, Rho Club '49-'51, Vice Pres. of Rho Club '50-'51, Y-Teens '47-'51, Perfect Attendance '47-'48 . . . JOHNSON, KENNETH . . . JOHNSON, LAVERNE - Y-Teens '49-'50.



JOHNSON, ROSE MARIA - C.O.C. Club '50-'51, Bi-Phy-Chem, Chorus '47-'49, Y-Teens '47-'51 . . . JONES, BETTY JO - Rho Club . . . JONES, THOMAS, JR. - R.O.T.C. '47-'51, Boys' Glee Club '48-'49, Chorus '48-'51, R.O.T.C. Officers' Club, J.S. Choral Ensemble, Philharmonic Chorus.



KELLEY, DONALD - Lt. Col. R.O.T.C., R.O.T.C. '47-'51, Spanish Club '48-'51, C.O.E. Club '49-'50, Chorus '47-'51, Boys' Glee Club '47-'48, Red Cross Rep. '50-'51, Student Council '50-'51, Pres. R.O.T.C. Officers' Club, J.S. Williams Choral Ensemble, K.C. Philharmonic Chorus, R.O.T.C. Award . . . KENNEDY, WINDSOR . . . KING, DOROTHY J. - Callotype Staff, Spanish Club '50, Booster Club '48, Bi-Phy-Chem '49-'51, Photography Club '49-'50, Intramural Sports '47-'49, Rho Club '50-'51, Y-Teens '48-'51, Perfect Attendance '49-'51.



KINSLOW, CORDIE MAE - C.O.E. Club '50-'51, Spanish Club '48-'49 and '50-'51, Boosters Club '47-'48 . . . LANE, BETTY JEAN - Reporter of Chemistry Club '50-'51, Bi-Phy-Chem Club '49, Treasurer of French Club, Akapals '49-'51, Y-Teens Cabinet, Y-Teens . . . LEWIS, ELSIE.



LEWIS, HOLLIE MAE - Booster '47-'51, Majorette '48-'51, Rho Club '48-'51 . . . LLOYD, DOROTHY . . . LOONEY, JESSIE - Chorus '47-'48, Majorette '49-'51, Spanish Club '50-'51, Callotype Staff '50-'51, Booster Club '48, Rho Club '49-'51, Majorette Award '49-'51.



LOWE, VERA JEANNE - Majorette '47-'51, Cheerleader '47-'48, Callotype Staff, Intramural Sports, Chemistry Club, Rho Club '48-'51, Y-Teens '47-'51, Majorette Award . . . LOWERY, VOUGHNCELLA - Y-Teens '47-'48, Booster '47-'48, C.O.E. Club '48-'49 . . . MCCOY, LIRLENE - Dramatics Club, Chorus '50-'51.



McDAVID, ANNIE PEARL - Spanish Club '50-'51, French Club '49-'50, Chorus '47-'49, Callotype Staff '50-'51, Corridor Guide '47-'48, Student Council '47-'48, Band Majorette '49-'51, C.O.E. Club '49-'51, C.O.E. Award . . . McKISSICK, MAURICE - Lettermen's Club '50-'51, Track '49-'51, Football '50-'51, Vice President French Club '49-'50, Bi-Phy-Chem Science Club '49-'51, Redael Club '48-'51, Football Letter '50 . . . McTHOMAS, MARLENE - Yearbook Staff, Sec. Chemistry Club '50-'51, Bi-Phy-Chem Science Club '49-'50, Treasurer Spanish Club '50-'51, Sec. Americana Co-Eds '50-'51, Student Council '49-'50, Asst. Sec. Soph. Class '48-'49, Y-Teens '47-'51, Vice Pres. Inter-Club Council '48-'49, Akapals '48-'51, Honor Roll '47-'51, Perfect Attendance '48-'49.

Seniors

MACK, WILLIAM - Del Magnas . . . MARTIN, RUTH A. - Girls' Glee Club '47-'48, Chorus '48-'49, Chemistry Club '50, Art Club '50, Perfect Attendance Award '47-'48, Honor Roll '48-'49 . . . MILLER, BEVERLY - Del Sprites '48-'51, Americana Co-Eds '50-'51, Major-ette '48-'50.

MILLER, JOANN - Bi-Phy-Chem Science Club '49-'51, Chemistry Club '50-'51, Spanish Club '49-'51, Student Council '49-'50, Chorus '47-'49, Akapals '48-'51, Y-Teens '47-'51, Americana Co-Eds '50-'51, National Honor Society '49-'51, English Award '47-'50 . . . MILLER, RONALD - Lettermen's Club '50-'51, Football '50-'51, Track '49-'51 . . . MINOR, ALMA LOUISE - Spanish Club '50-'51, Chorus '48-'50.

MITCHELL, ALFRED H. - Band . . . MITCHELL, JOAN - Bi-Phy-Chem Science Club '49-'51, Chemistry Club '50-'51, Dramatics Club '50-'51, Senior Activities Committee, Yearbook Staff, Reporter of Junior Class, Treasurer Del Sprite Club '50-'51, Del Sprite '49-'51, National Honor Society '50-'51, Intramural Honors '47-'51, English Award '47-'50, Dramatics Award '49-'50, Perfect Attendance '47-'51 . . . MONTGOMERY, GERALDINE - Girls' Glee Club '48-'49, Chemistry Club '50-'51, Chorus '49-'51, Intramural Award '49-'50.

MOORE, OTIS L. - Boys' Glee Club '49-'50, Chorus '50-'51, Student Council '50-'51, Hi-Y '47-'48 . . . MORGAN, VIVIAN - Latin Club '48, Spanish Club '48-'50, Y-Teens '48-'51, Akapals '48-'51, Honor Roll '48-'51, Senior Class Sec., Chief Typist Annual Staff, Perfect Attendance Award '49, English Award '49 . . . MORROW, RUBY LOUISE - Chorus '49-'51, Boosters '48, Spanish Club '50-'51, Glee Club '49, Rho Club '50-'51, Y-Teen '48-'49.

NASH, RUBY - School Chorus '48-'49, Science Club '49-'50, Akapal Club '49-'51, Chemistry Club '50-'51, Spanish Club '50-'51, Perfect Attendance Award '48-'50, Honor Roll '49-'51 . . . NEELY, FRANK - Football '50-'51, Lettermen's Club '50-'51 . . . NEWMAN, WALSTINE - Y-Teen '50-'51, Perfect Attendance '47-'48.

NIXON, MYRTLE - Student Council '50-'51, Science Club '49-'50, Y-Teen '49-'50, Treasurer of Akapals '49-'51 . . . NUNN, LEOTA - Science Club '49-'51, Chemistry Club '50-'51, Art and Crafts Club '50-'51, Intramural Award '47-'51, English Award '48-'49 . . . OLIVER, AUDREY - Student Council '49-'50, Chorus '49-'50, Senior Activities Committee, Rho Club '49-'51, Y-Teen '47-'51, Inter-Club Council '49-'50, Honor Roll '49.

OSBORNE, JAMES - Marathon '47-'48, Basketball '50-'51 . . . PIERCE, DONALD - R.O.T.C. '47-'51, Marathon '47-'48, Science Club '49-'50 . . . POWELL, SHIRLEY - Pres. Del Sprites '49-'50, Callotype Staff '49-'50, Student Council '47-'51, Secretary Student Council '47-'50, Vice Pres. Freshman and Sophomore Class.



Seniors

PRIDE, BARBARA - Science Club '50-'51, French Club '50-'51, Chorus '48-'49, Majorette '49-'51 . . .
 QUARLES, MARIETTA - Science Club '49-'51, Chemistry Club '50-'51 . . . RAGLAND, RONALD - Science Club '49-'51, R.O.T.C. '48-'49, Marathon '47-'48.

RAMIREZ, PATRICIA - Spanish Club '50-'51 . . .
 REED, INA JANE - Orchestra '47-'48, Band '48-'51, Intramural Award '49-'50 . . . ROBERSON, CONSTENT.

ROBERTS, BETTY . . . ROBINSON, ROBERT . . .
 ROSS, DORIS - Girls' Glee Club '48-'49, Chorus '48-'51, Science Club '49-'51.

ROULETTE, MAXINE - Spanish Club '50-'51, Dramatics Club '50-'51, Red Cross Council '49-'50, Student Council '49-'50, Chorus '47-'51, Science Club '50-'51, Americana Co-Eds '50-'51, Cheerleader '49-'51, Del Sprite '49-'51, Y-Teens '47-'49 . . . RUCKER, ROBERT . . .
 RUE, RACHEL - Y-Teens '47-'51, Spanish Club '50-'51.

SAUNDERS, ROBERTA - Science Club, Art Club Pres., Y-Teens, Art Award . . . SHARP, CARL - Bi-Phy-Chem Science Club '49-'51, Spanish Club '50-'51, Yearbook Staff, Rifle Team Award '47-'48 . . . SHIELDS, CLARA - Bi-Phy-Chem Club '49-'51, Girls' Glee Club '47-'48, Chorus '49-'51, Spanish Club '50-'51, Dramatics Club, Boosters Club, Del Sprite '48-'51, Americana Co-Eds '50-'51, Y-Teens '47-'51.

SHIRLEY, CLARENCE - Football '49-'50, C.O.E., Perfect Attendance '49-'50 . . . SHOBE, FRANKLIN DELANO - National Honor Society '50-'51, Quill and Scroll, Dramatics '49-'51, Senior Class Historian, Callotype Staff, Redael Club '48-'51, Football '47-'51, Basketball '49-'51 . . . SIGGERS, HARRY N. - R.O.T.C. '47-'48, Boys' Glee Club '49-'50, Corridor Guide '48-'49.

SIMON, CALVIN M. - Bi-Phy-Chem Science Club '51, Spanish Club '48-'51, Chorus '47-'51, Dramatics Club, R.O.T.C. '48-'49, Honor Roll '47-'48 . . .
 SLAUGHTER, ALONZO, JR. - R.O.T.C. '48-'51, Marathon Club '47-'48, Redael Club '49-'51, Art Award '48-'50 . . . SMALLS, ROBERT, JR. - Pres. Dramatics Club, Bi-Phy-Chem Science Club, Chemistry Club, Spanish Club, R.O.T.C. '47-'49, Chorus '48-'50, Callotype Staff '50, Boys' Glee Club '48-'50, Hi-Y '47, R.O.T.C. Award '48.

Seniors

SNEED, ETTA DE - Girls' Glee Club, Chorus, Callotype staff . . . SPENCER, BOBBIE . . . STEEMER, DON ROMON - Marathon Club '47-'48, Student Council '47-'48, Red Cross Representative, Bi-Phy-Chem Science Club, Prom Reporter '49-'51, Redael Treasurer '49-'51, Quill and Scroll '49-'50.

STEVENSON, ANDREW - Science Club '49-'51, Photography Club '49-'50, Spanish Club '48-'50, Marathon Club '47-'48, L Club '50-'51, Prom Reporter '48-'51, Art Club '47-'48, Redael Club '48-'51, Football '48-'51, Football Letter, Perfect Attendance '47-'48 . . . STONE, BERTHA - Corridor Guide '48-'49, Callotype Staff '50-'51, Intramural Sports '49-'50, Y-Teens '47 . . . STOVALL, GLORIA - Bi-Phy-Chem Science Club '49-'51, Spanish Club '49-'51, Chemistry Club '50-'51, Quill and Scroll '49-'51, Majorette '48-'50, Chorus '50-'51, Press Club '49-'50, Student Council '50-'51, Callotype Staff '49-'50, Y-Teen '50-'51, Americana Co-Eds '50-'51, Del Sprite '48-'51, Pres. Del Sprite Club '50-'51, Honor Roll '49-'51, Majorette Award.

SUMMERS, THEODORE - R.O.T.C., Marathons '47-'48, Bi-Phy-Chem Science Club '48-'49, Football '48-'49, Football Letter . . . TAYLOR, EARTHA LEE - Spanish Club '49-'51 . . . TERRY, THELMA.

THOMAS, DONALD LEE . . . TURNER, DEVEAR BELL - Student Council '49-'50, Y-Teens '47-'49, Perfect Attendance '47, Honor Roll '48 . . . TURNER, LA VERNA J. - President Science Club, Bi-Phy-Chem Science Club '49-'51, Chemistry Club '50-'51, Dramatics Club '50-'51, Chorus '48-'51, Glee Club '48-'50, Yearbook Staff, Student Council '47-'49, Photography Club '50-'51, Del Sprite Club '48-'51, Americana Co-Eds '50-'51, Y-Teens '50-'51, Honor Roll '47-'50, National Honor Society '50-'51, Perfect Attendance '47-'50, English Award '47-'48 and '49-'50.

TURNER, WARREN - Hi-Y '47-'49, Lettermen's Club '50-'51, Chemistry Club '50-'51, Redaels '48-'51, Football '47-'51, Captain '51, Track '49-'51 . . . WALKER, DELLA - Bi-Phy-Chem Science Club '50-'51, Press Club '49-'50, Exch. Ed. of Callotype '49-'50, Quill and Scroll Honor Society, Intramural Award '47-'51 . . . WALKER, WILLIAM EUGENE - Marathons '48-'49, Football '47-'51, Bi-Phy-Chem Science Club '50-'51, Hi-Y '47-'50, Treasurer of the "L" Club '50-'51, Redael '49-'51, Football Letter '47-'51.

WALLACE, CAROL - Chorus '49-'50, Glee Club '48-'49, Bi-Phy-Chem Science Club '50-'51, Y-Teens '48-'50, Perfect Attendance '49-'50 . . . WARREN, WILLIAM - Art Award '50, Art Club '49-'51, Band '48-'49 . . . WEAVER, ROBERT - Rifle Team, R.O.T.C. '47-'51, C.O.E. Club '50-'51, Letterman Rifle Team '49-'51.

WEBB, VERETTE - Band '49-'51 . . . WHITTINGTON, BARBARA J. - Science Club '49-'51, Y-Teens '50-'51, Glee Club '49-'51, Chorus '49-'51, New Homemakers of America Club '47-'48, Photography Club '50-'51, Americana Co-Eds '50-'51 . . . WHITTINGTON, INEZ - Art Club, French Club, Bi-Phy-Chem Science Club, Y-Teens.



Seniors

WILKES, LORETTA - Spanish Club '48, Chorus '49-'50, Intramural Sports '48-'51 . . . WILLIAMS, ELLA JO - Chorus '48-'51, Special Chorus '49-'51, Bi-Phy-Chem Science Club '49-'51, French Club '48-'50, Dramatics Club '50-'51, Chemistry Club '50-'51 . . . WILLIAMS, EVA DEAN - Chemistry Club '50-'51, Chorus, Girls' Glee Club '49-'50, Intramural Sports '48-'51, Y-Teens '50-'51.

WILLIAMS, EVELYN LOUISE - Akapals '49-'51, Y-Teens '49-'51, Chorus '48-'51, Honor Roll '48, Glee Club '48-'51, Chemistry Club '50-'51, Spanish Club '50-'51, Perfect Attendance '48 . . . WILLIAMS, HENRIETTA - Chorus '48-'50, Y-Teens '47-'49 . . . WILLIAMS, THEODORE E. - Marathons '47, Del Magnas, Art Award '47.

WOODS, JOHNNIE MAE - C.O.E. Club . . . WOODS, MARGARET ANN . . . WOODS, JOHNETTA - Girls' Glee Club.

WYATT, SONDRRA - Y-Teens, Chorus, Student Council, French Club, Photography Club, Bi-Phy-Chem Science Club . . . WILEY, JOYCE ANN - Del Sprite Club '48-'51, Sec. Del Sprites '49-'50, Sec. Bi-Phy-Chem '49-'50, Honor Roll '47-'50, English Award '47-'48, Y-Teens '47-'51, French Club '48-'49, Perfect Attendance '47-'50, Student Council '47-'50, Queen of Soph Hop, Activities Committee of Sr. Class, Yearbook Staff, Honor Pin, Intramural Award.

PICTURES NOT AVAILABLE

Bobby Adkins
Delores Frances Johnson
John E. McGee
Ertha Marie Moton

Bernard Saunders
Andrew Scott
Wanda Wright

Yearbook Staff

SEATED, left to right

Donald Gibson Associate Editor
 William Harris Assistant Editor
 Kathryn Evans Editor-in-Chief
 Joyce Wiley..... Associate Editor
 Vivian Morgan Chief Typist

STANDING

Maurice McKissick Sports Editor



SEATED, left to right

Leota Nunn Assistant Art Editor
 Kenneth Johnson Photography Editor
 William Frazier Photography Editor
 William Warren Art Editor
 William Brown Art Editor



SEATED, left to right

Gwendolyn Harris Business Manager
 Marlene McThomas ... Assistant Typist
 Margaret Carter Publicity Editor
 Gwendolyn Freeman Literary Editor
 LaVerna Turner Literary Editor
 Joan Mitchell Typist



THE CLASS OF "51"



IN "47"

Homerooms



Juniors



Sophomores



Freshmen

Juniors

MR. PARKER-301-Front row, left to right: W. Watkins, J. Edwards, C. Davis, J. Dillon, F. Ewell, W. Biggins. Second row: F. Goodwin, L. Davis.



MR. DARTON-109-Front row, left to right: V. Ross, S. Rogers, B. Warren, M. Rhodes, J. Roach, N. Price, M. Nunley, W. Pratt. Middle row: M. Reed, J. Ward, W. Ponder, M. Wardlow, S. Brooks, M. Rector, J. Byers, T. Bently. Back row: J. Rogers, J. Childress, A. Ray, C. Perkins, J. Reed.



MISS NEWSOM-102-Front row, left to right: D. Harrison, S. Hatcher, G. Green, J. Green, P. Bell, H. Davis, S. Hendricks, S. Goodlow. Middle row: Miss Newsom, B. Herbert, M. Hardwick, L. Hardin, A. Gunter, J. Gregory, O. Thomas, S. Handy. Back row: L. Green, R. Hall, E. Hendrix, F. Williams, D. Woods.



Junior Homerooms

MR. JEFFRESS-209-Front Row, left to right: V. Watson, J. Bryant, M. Brown, E. Cooper, E. Armstrong, B. Ewell, E. Barber, L. Caldwell. Middle Row: K. Johnson, W. Crockett, F. Holoman, L. Hart, C. Aldridge, B. Batsell, T. Bentley, W. Anthony, F. Williams, S. Young, B. Byrd, D. Brooks. Back Row: F. Anthony, L. Malone, W. Swindell, L. Greenfield, W. Burns, W. Wiley, R. Arnold, T. Brown.



MR. DUNLAP-302-Front Row, left to right: C. Pledger, E. Williams, A. Campbell, T. Gatlin, S. Bess, D. Bright, R. Clarity, J. Carter. Back Row: C. Clark, C. Robinson, A. Gordon, W. Scott.



MRS. STRICKLAND-211-Front Row, Left to right: N. Miles, B. Morris, J. Maddox, D. Morgan, E. Perkins, S. North, S. Allen, I. Mallory, Middle Row: W. King, S. McKay, T. Morgan, C. Nash, P. Carlin, E. McDaniel, M. Coleman, S. McWilliams, O. Monday, D. Brown, H. Moore. Back row: L. Murphy, C. Mitchell, R. Walker, W. Triplett, D. Baker, A. Walker, J. Neely, T. McCormick.



Homerooms

Junior



MRS. LYNK-303-Front Row, left to right: N. Johnson, E. Jefferson, I. Sanders, B. Kelly, A. Shelton, D. Irving, E. Hunt, F. Hopkins. Middle Row: M. Lynk, L. Johnson, D. Locket, C. Jordon, H. Sax-

ton, Z. Jones, S. Jones, B. Jones, D. Kirtley. Back Row: J. Holman, H. Jefferson, H. Jackson, G. Lane, W. Jordan, C. Jacobs.



MISS HAWORTH-103-Front Row, left to right: B. Patterson, R. Slaughter, D. Shelton, B. Taylor, J. Sutton, J. Starr, R. Sutton, N. Partee. Middle Row: B. Allen, J. Spears, B. Roberson, O. O'Neal,

L. Jackson, M. Roberts, F. Tate, T. Thompson. Back Row: C. Stevenson, R. Pollard, R. Tilley, V. Thomas, M. Tivis, S. Ford, C. Rue, C. Smith, W. Smith.



MISS CHEROT-203-Front row, left to right: E. Daniels, J. Reginald, E. Minifie, M. Wash, M. Gray, N. Herndon, M. Parker, B. Burkes. Row two: K. Cotton, K. Counts, P. Turnly, B. Alexander, P. Jordan, C. Stevenson, L. Goodlow, E. Sanders D. Smith, J. Williamson, D. Miller. Row three: M. Kidd, A. Sanders, J. Johnson, H. Goza, J. Mack, D. Simpson, G. Nolan. Row four: L. Hodge, F. Dupree, E. Brooks, J. Brown, Q. Swenson, A. Williams.

MR. ANDERSON-101-Front row, left to right: N. George, C. Hardin, S. Sayers, C. Thompson, R. Bayliss, M. Bagsby, J. DeFoe. Middle row: R. Briscoe, W. Taylor, M. William, O. Carr, W. McDaniel, W. Kizine, F. Diggs, W. Hamilton. Back row: R. Robinson, R. Edwards, O. Valentine, C. Owen, E. Thomas, S. Montgomery, J. Wilkins, W. Childs, V. Robinson.



MR. BARKER-207-Front row, left to right: R. Mahone, J. Miller, J. Ward, G. Williams, N. Cunningham, J. Calloway, N. Kingsbury, F. Smith. Middle row: B. Britton, D. Stevenson, S. Johnson, P. Williams, C. Frazair, G. Harrison, M. Norman, L. Bass, X. Allen, G. Terrell, J. Roberson, R. Snead. Back row: W. Jackson, H. Mason, W. Hamilton, E. Handy, J. Scott, H. Kelley, C. Cade, F. Brown.



MRS. BURNETT-210-Front row, left to right: D. Cole, E. Mimbs, C. Woodson, M. Sullivan, S. Briscoe, D. Richie, D. Beauchamp, D. Hardin. Middle row: J. Blackburn, R. Toombs, S. Norman, A. Roulette, V. Hatter, R. Thompson, J. Simpson, N. Talley, V. Dawkins. Back row: J. Jackson, H. Smith, C. Drew, F. Tyler, C. Campbell, A. Glover, B. Wilson, E. Walker.



MISS HENRY-306-Front row, left to right: I. Wyvetla, R. Brackington, C. Smith, J. Reginald, C. Wheeler, S. Keys, V. Beasley, S. Smith. Middle row: N. Neeley, W. Ingram, P. Hankens, F. Thompson, F. Elliot, R. Taylor, W. Thompson, C. Beavers, Back row: E. Butler, J. Partee, L. Reynolds, B. Denman, L. Pierce, J. Rowan, T. Saunders.



MISS FOREMAN-205-Front row, left to right: D. Pernell, L. McCoy, B. Colleir, J. Banks, A. Clay, E. Towsal, R. Chapple, B. Nelson. Middle row: H. Mills, W. Thomas, C. Fortman, B. May, E. Taylor, Z. Lloyd, A. Bell, E. Stephens, O. Thomas, P. Wyatt. Back row: R. Love, E. Jackson, V. Henson, K. Roberson, H. Price, R. Dillard, G. Jack, E. Welchen.



Sophomore

Homerooms

MISS NOLAN-104-First row, left to right: M. Garrett, B. Roberts, E. Toms, V. Hill, G. Coleman, O. Brice, D. Lewis, and F. Weaver. Second row: J. Rachele, A. Briscoe, P. Gray, D. Wilson, P. Price, W. Jones, B. Johnson. Third row: H. McAdams, A. Keeling, W. Brooks, J. Hardy, L. Smith, M. Dixon. Back row: C. Scott, T. Copridge.

MR. WASHINGTON-204-First row, left to right: J. Johnson, M. Russell, C. McLean, N. Bell, P. Ingram, S. Willis, R. Thomas, N. Bryant. Second row: C. Smith, D. Wilson, R. Beverly, L. Patterson, D. Carter, D. Dallas, C. Harper, H. Bryant, H. Woods. Third row: J. Bishop, E. Dameron, L. Walker, B. Moore, R. Avery, C. Parker, R. Goldsby.

MR. WHITMORE-Auditorium-First row, left to right: M. Daniels, G. Williams, C. Jones, G. Williams, M. Washington, D. Finley, E. Holman, V. Allen. Second row: H. Nickerson, B. Hunter, E. Drew, L. Vaughn, M. Stone, E. Tillman, B. Jones, E. Johnson. Third row: G. Hamilton, C. Moore, R. Daniels, E. Hill.



MISS MAYFIELD-206-First row, left to right: L. Asberry, P. Porter, P. Walker, L. Pitts, G. Jackson, D. Gregg, M. Hatcher, V. Hart. Second row: A. Williams, J. Walker, P. Lacour, D. Moton, E. Ross, R. French, R. Harris, D. Moton, D. Roe, I. Lee, B. Henderson. Third row: J. Campbell, J. Dancy, B. Hill, H. Campbell, C. Lockett, T. Taylor, J. Wilson.

MRS. DONALDSON-106-First row, left to right: B. Greenwood, B. Wesley, W. Elliot, F. Williams, E. Brown, H. Hunt, A. Love, C. Pickens. Second row: C. Minor, L. Thompson, J. Tilford, M. Pegue, M. Boleyjack, E. Johnson, P. Stephens, C. Clark, E. Moore, Y. Brooks. Third row: H. Brazier, R. Birch, R. Russell, M. Lee, G. James, L. Pobinson, M. Harris. Fourth row: J. Robinson, J. Reynolds, S. Lane, D. Lacy, S. Lane. Fifth row: J. Hill.



MR. HUBBARD-215-Front row, left to right: B. Johnson, B. Hayes, V. Powell, D. Guy, D. Grant, L. Sims, C. Hoard, B. Jordan. Middle row: S. Osborne, D. Sayles, J. Hill, B. Stevenson, R. Pryor, B. Stevenson, B. Beasley, B. Smith, J. Sherman. Back row: C. Tucker, C. Brooks, D. Newton, D. White, D. Foster, L. Walker, G. Trigg, A. Cameon, W. Burgett, D. Young.



MR. LEE-202-Front row, left to right: A. Glass, E. Hill, J. Spears, P. Watson, E. Simmons, E. Brown, J. Bowman, A. Pattillo. Second row: D. Jordan, J. Wells, B. Rowe, S. Thurman, S. Young, M. Williams, T. Smith, E. Wright, W. Arnold, B. Jones, Third row: J. Cherry, I. Harris, S. Walker, G. Johnson, J. Saunders, C. Hendricks, E. Craddock. Fourth row: C. Marshall, R. Trigg, A. Miller.

MR. McCREARY-Front row, left to right: J. Welch, D. Franklin, C. Simms, J. Buie, E. Hill, H. Johnson, C. Quarles, A. Shirley. Middle row: H. Kirby, J. Winston, F. Anderson, C. Bostic, M. Weekly, B. Winston, J. Frazier, J. Harris, M. Thomason, J. Williams, A. Walters, G. Byrd, M. Monroe, L. Hill, L. Powell, Back row: W. Brooks, D. Raphael, J. Keys, M. Bradley, J. Brewer, E. Draffen, R. Brown, D. Walker.



MRS. NEAVES-Aud. B. -Front row, left to right: G. Tyler, B. Johnson, D. Adams, C. Flonnoy, B. Culliver, K. Beaseley, B. Peeler, G. Hardin. Middle row: C. May, S. Conner, S. Smith, J. Parker, O. Cubit, C. McCormick, J. Wolfskill, C. Robinson, M. Bell, M. Collins, E. Asberry, J. Parker, F. Jancock, H. Carson, J. Byers, B. Lee, J. Brockington. Back row: W. Rand, J. Wilson, M. Kimber, W. Myles, E. Tate, K. Roach, J. Irving, J. Tivis.





MRS. THOMPSON-110-Row one, left to right: M. Billingsley, H. Latimore, H. Brown, J. Warfield, A. Smith, M. Anderson, L. Collier, N. Mack. Row two: M. Carr, O. Shumute, J. Graves, G. Hayes, S. Herring, J. Hill, V. Robinson, F. Hoskins, B. Chiney, R. Hunter, A. Bonds. Row three: R. Goza, M. Ward, C. Foreman, C. Beaman, C. Hickman, B. Ware, B. Ramsey, E. Allen, M. Shellner, M. Abrought, S. Rollins, G. Hardwicke. Row four: F. Barbee, E. Glover, M. Mitchell, J. Butler.



MRS. WILSON-305-Front row, left to right: B. Ferguson, J. Toms, I. Strong, M. Smith, A. Tillman, B. Simms, A. Draffen, I. Anderson. Middle row: B. Reid, J. Monroe, S. Bennett, M. Newman, N. Diggs, E. Andrews, J. Hall, W. Barnett, J. Bingley, J. Cave, L. Swindell, M. Newman, F. Coleman, A. Smalls, D. Daniels, T. Bazadierk. Back row: R. Marshall, H. Graves, C. Breedlove, N. Collins, R. Shepherd, R. Brown, M. Herndon, J. Rand.



Organizations

NATIONAL HONOR SOCIETY Left to right: J. Mitchell, W. Brown, G. Freeman, F. Shobe, L. Turner, D. Gibson, J. Miller, K. Evans.



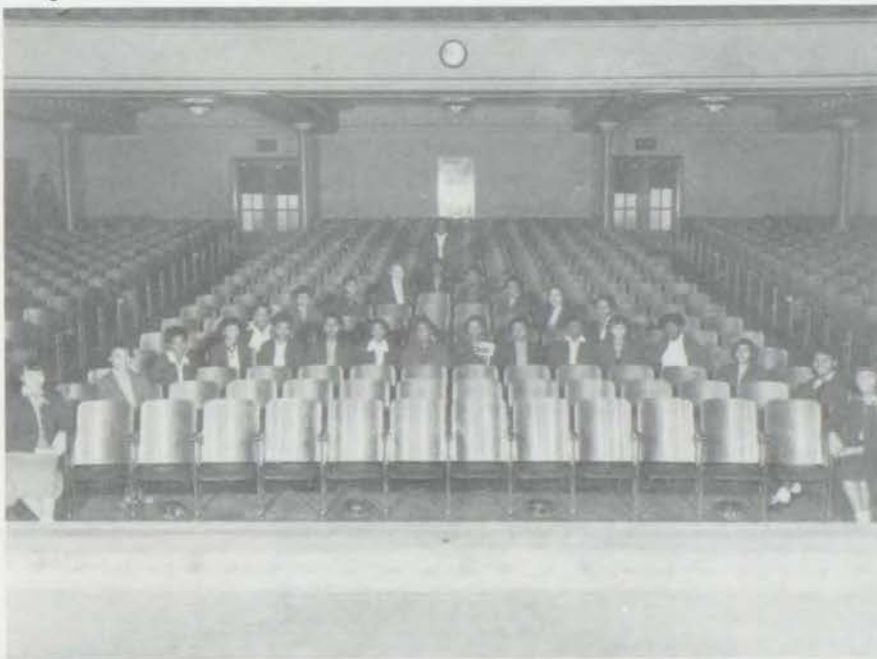
STUDENT COUNCIL OFFICERS Row one, left to right: G. Stovall, Secretary; D. Gibson, Vice President; R. Bayliss, Junior Continuity Member. Row two: D. Shelton, President; M. Brown, Treasurer.

REDAEL CLUB The Redaels, sponsored by the Kappa Alpha Psi Fraternity, strive for leadership, scholarship and character development. It is an outgrowth of the fraternity's "Guide-right" program.





DEL SPRITES The Del Sprites, a club organized in 1941, is the protege club of the Delta Sigma Theta Sorority. The girls strive for scholarship, leadership, character, and good will.



AKAPALS Girls of like social interests and meeting certain rigid standards of scholarship compose this group sponsored by the Alpha Kappa Sorority.



"L" CLUB - This club is composed of members of the athletic squads who have recieved the "L" in football or basketball during the athletic season.

AMERICANA CO-EDS - This is a social club composed of fourteen girls, the purpose which is to develop social qualities.



CHEMISTRY CLUB - Students who have an average or above grade in Chemistry are eligible. The purpose of the club is to further interest and knowledge of the subject.



The BI-PHY-CHEM CLUB is composed of students who possess a keen interest in the wonders and mysteries of science. Mr. Caruthers, instructor of biology, is adviser of the group.

The CHEMISTRY CLUB is made up of students whose chief scientific interest is focused on chemistry. Mr. Lynk, instructor of chemistry, is their mentor.



This is the DRIVER EDUCATION GROUP, whose objective is good and safe driving. There isn't a "hot rod" present. Mr. Parker is in charge of this organization.



R. O. T. C. Rifle Team

Honor Drill Squad



Senior Officers



RHO Club This is a club sponsored by the Sigma Gamma Rho Sorority.

Y-Teens This is a club sponsored by the Y. W. C. A. This club promotes fellowship among the girls and helps to adjust them socially.



Cheerleaders

This group promotes school spirit at games. The girls are picked for poise and personality.



Majorettes

Poise, character, and scholarship are the main requirements for membership in this group.



Science Club

This is a science club for organized students of Biology, Chemistry, and Physics. Certain standards and requirements must be met for membership.





Chorus

Their voices are unmatched for miles around.

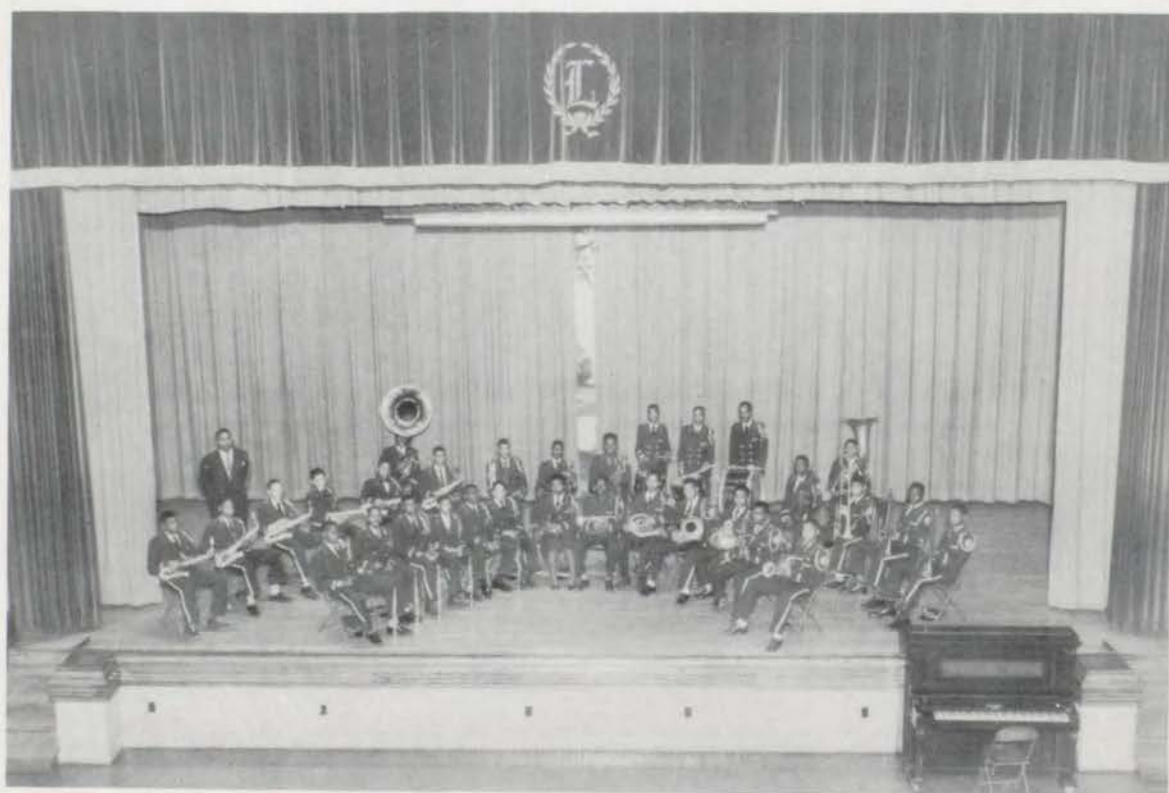


Chorus



Band

Strike up the band and blow, Mr. Jackson, blow!
These boys have that beat--and how!



Band

Speaking of Seniors



EUGENE WALKER



JOANNE MILLER &
HER SHADOW,
VIVIAN MORGAN



LONNIE
(SEYMOUR)
SLAUGHTER



DASHING FOR HOMEROOM
(EVERY MORNING)
JOYCE (POCOHANTAS) GRAHAM

Yearbook Queen

BARBARA PRIDE



Yearbook King

WILLIAM FRAZIER





Second Attendant
WANDA WRIGHT



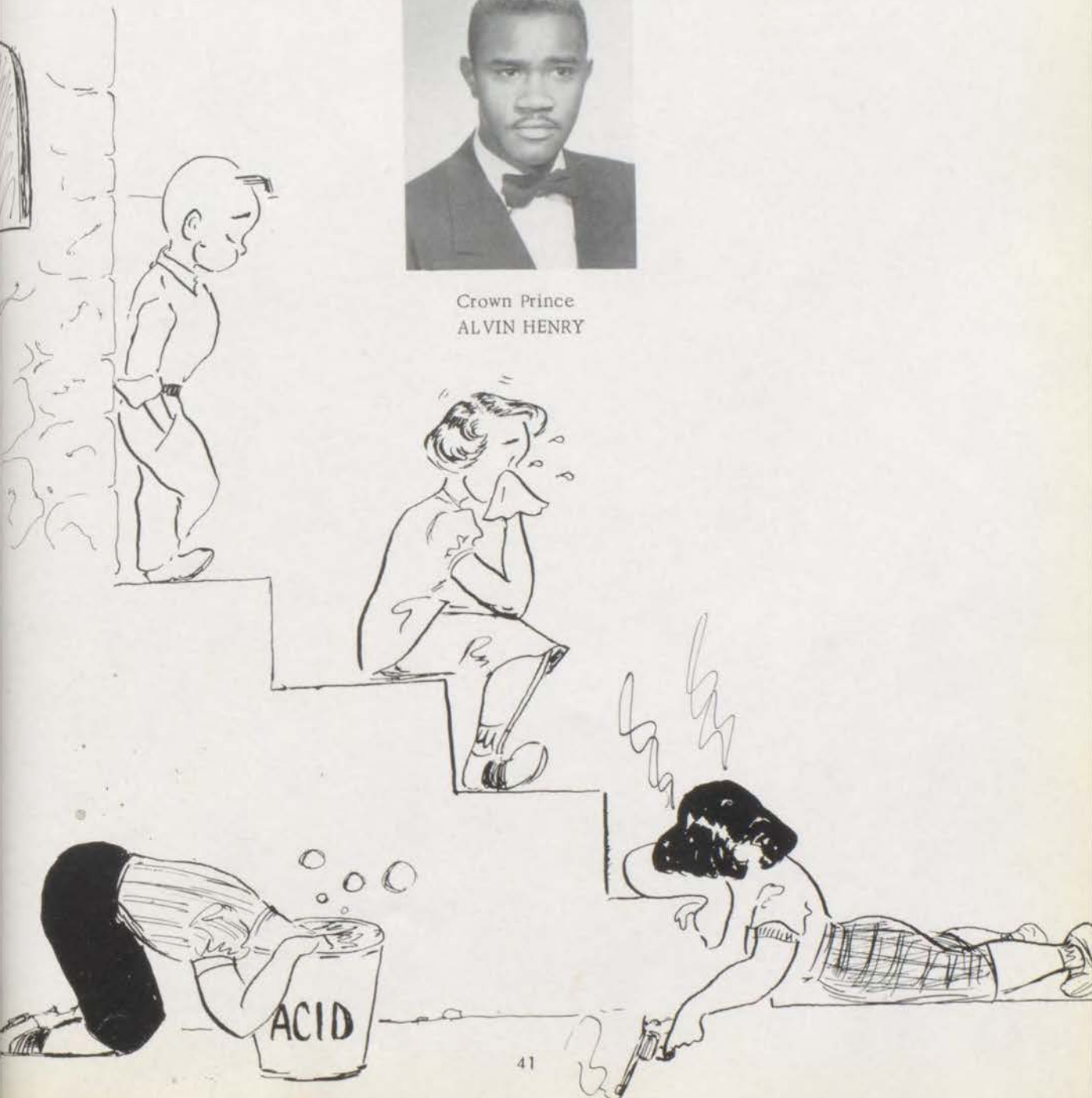
First Attendant
ELLA JO WILLIAMS



Third Attendant
BEVERLY MILLER



Crown Prince
ALVIN HENRY





ATHLETICS



Football

Rt. Guard
Neely, Frank

Left End
Jefferson, Harold

Quarterback
Shobe, Franklin



Group picture of football team.

Right Halfback
Williams, Willard

Left Halfback
Crockett, Wilbur

Fullback
Williams, Leroy

Rt. End
Campbell, Stanley

Left Tackle (co-captain)
Hendrix, Eugene

Right Guard
McGee, John

Left Guard
Walker, Eugene

Center (captain)
Turner, Warren

Football Scores

We	Opponents	
32	Sedalia	0
0	Muskogee	18
19	Coles	0
13	Sumner	12
0	Muskogee	28
28	Columbia	0
19	Coles	20
0	Okla. City	33
12	Sumner	13





Basketball Team

FRONT ROW, left to right: Leonard Hill, Jimmy Osborne, Herschel Clark, Robert Grider, Co-Captain; Wilbur Triplett. BACK ROW: Arnett Williams, Stanley Campbell, Casey Hawthorne, Gurnie Gunter, Clarence Bell, Captain; Ken Johnson, LaVerne Hart.

We're proud of our 1950-51 basketball team. With two state tournaments, nineteen wins (just two losses) they'll no doubt turn up with the state championship. These boys are plenty hot. And--of course!--they had a sharp, sharp coach--Perry Kirkpatrick.



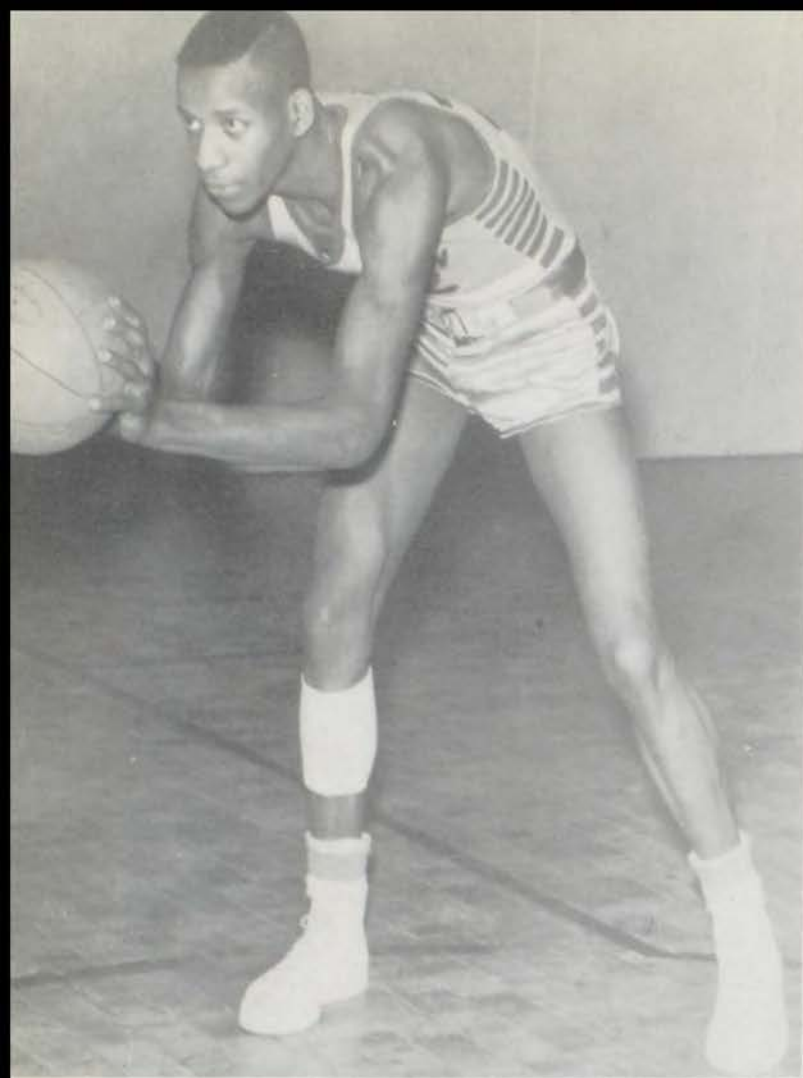
ROBERT GRIDER



KENNETH JOHNSON



WILBUR TRIPPLETT and STANLEY CAMPBELL



CLARENCE BELL



GURNIE GUNTHER



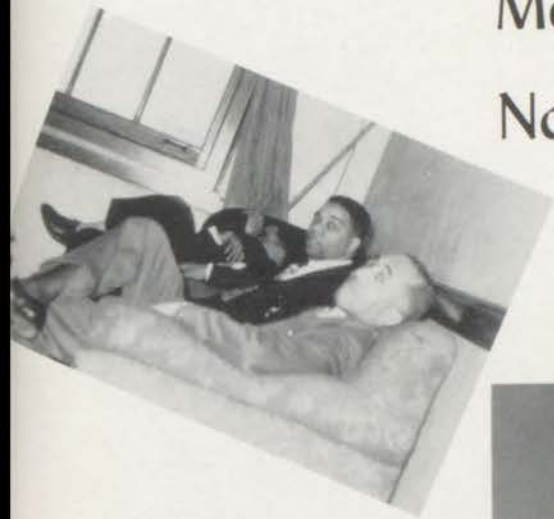
QUEEN: Harriett Lattimore
ATTENDANTS: Juanits Walker, Beverly
Martin, Marylin Boleyjack

Here
and
There

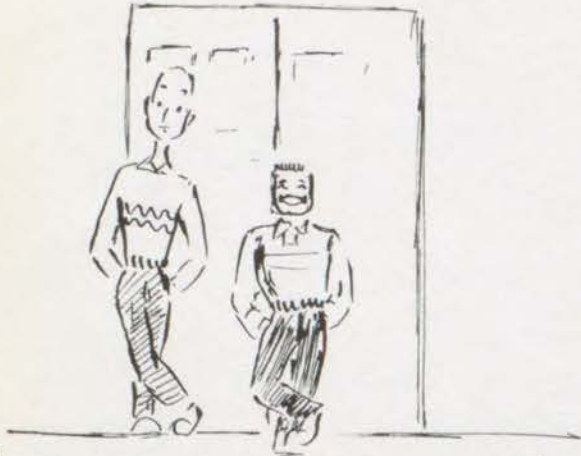




Men-
Not at Work



Speaking of Seniors



"UNDER THE CLOCK BOYS"
"MUTT" BELL & "JEFF" GRIDER



MAXINE ROULETTE
"MISS NOISE OF 1951"



SAM (B.D.) TURNER

THERE GOES
WM. (HOT ROD) WARREN



Teachers' Showcase



DUNLAP!

"NOW STUDENTS, THIS IS FOR YOUR OWN GOOD!"



Teachers' Showcase



SOMETHING NEW BREWING TROUBLE
HAS BEEN ADDED! FOR HIS ENGLISH
CLASSES



"CRIME BUSTER"
WEST

Teachers' Showcase

$\frac{1}{2}$ volume of C_2OH_3 ?
 $V = \sqrt{2as}$?
 $MA = \frac{EF}{RF}$

$D = WU$

$v = nl$

$\frac{\psi}{4} = 4$

$17 \times \frac{20}{2} = ?$



BURNING THE MIDNIGHT OIL"

IF YOU BELONG IN CONFERENCE, GET IN HERE!





Allen, Maurice



Bennett, Lawrence



Booker, Charles



Brown, John



Crocket, Hayden



Davis, Leta



Douglass, Fred



Elliot, John



Garrett, Kathryn Delores



Gray, Gamaliel



Hughes, Robert



Hunter, Gladys



Jones, James



Keyes, Doris



McCormick, Lawrence



Pierre, Alexander



Quillings, Elzater



Sanders, Charlene



Tillman, Gloria



Walters, Kenneth



Washington, Gwendolyn



Woods, Charles



Wright, Anna

Junior College Sophomores



Abron, Erma



Carter, Charles



Clark, Cornelius



Clark, Ernestine



Davis, John



Duke, Lester



Evans, Virginia



Garrett, Kathryn

Junior College Freshmen



Green, Margaret



Hayes, Doris



Henderson, Barbara



Moore, Clarice



Scott, Ethel



Simmons, Betty



Townsend, Otis



Wade, Dorothy

Conference
Bound



The
Hands

Spring
Flowers





