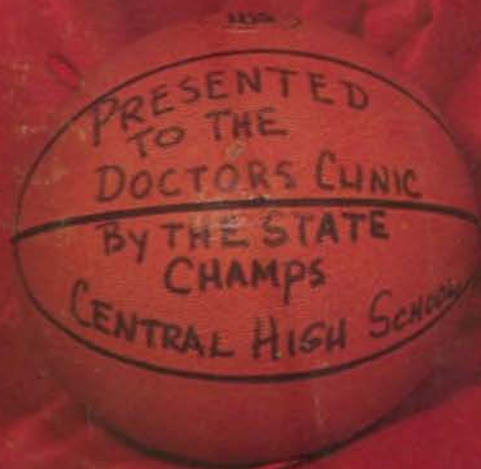
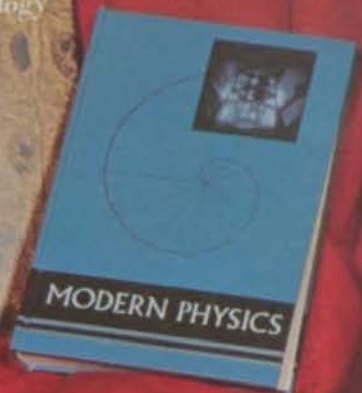
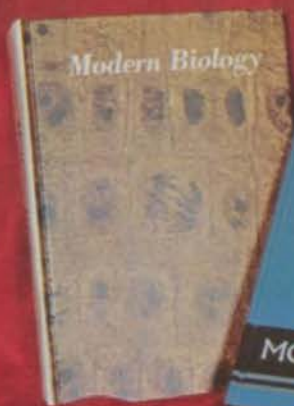
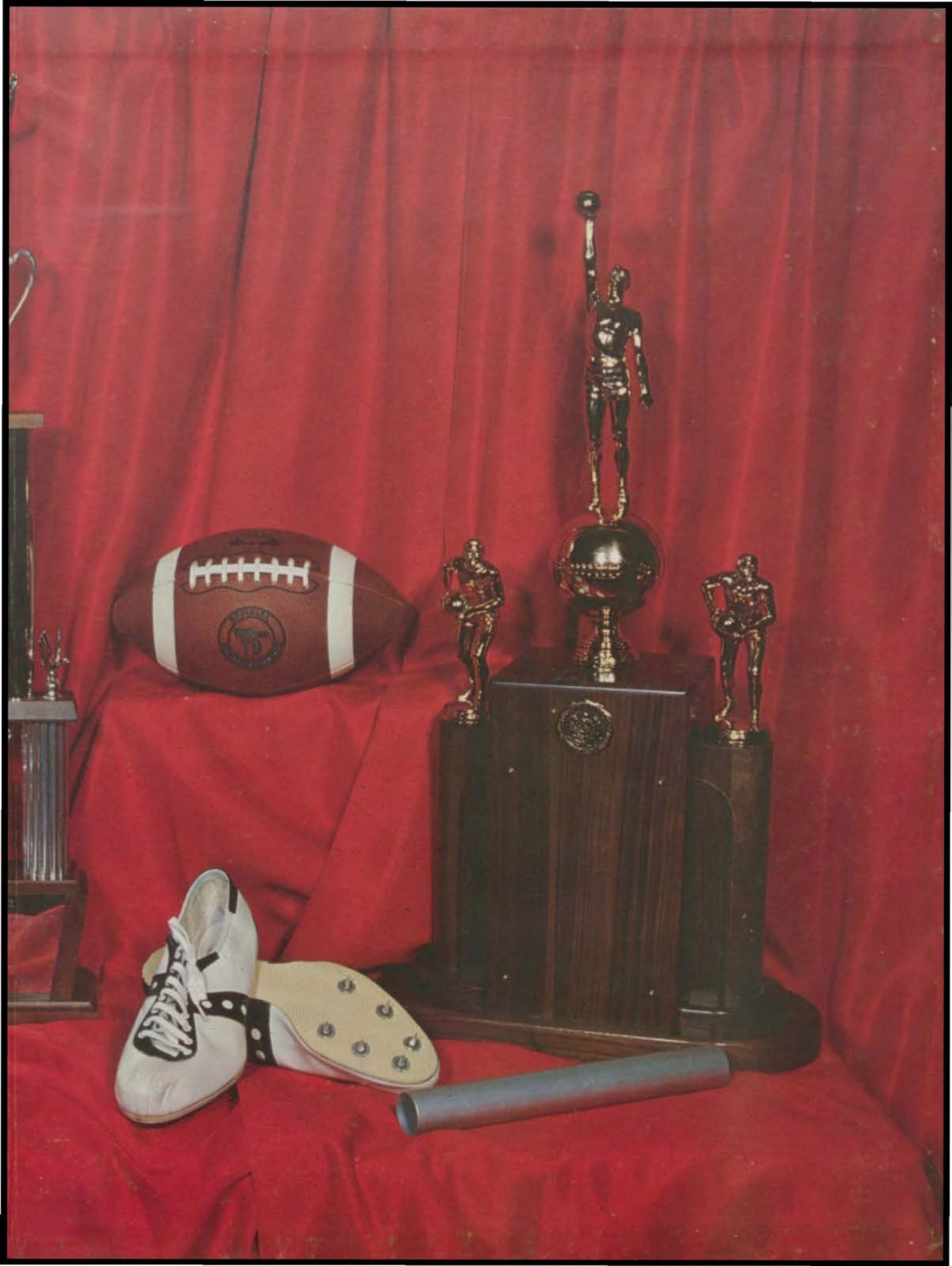
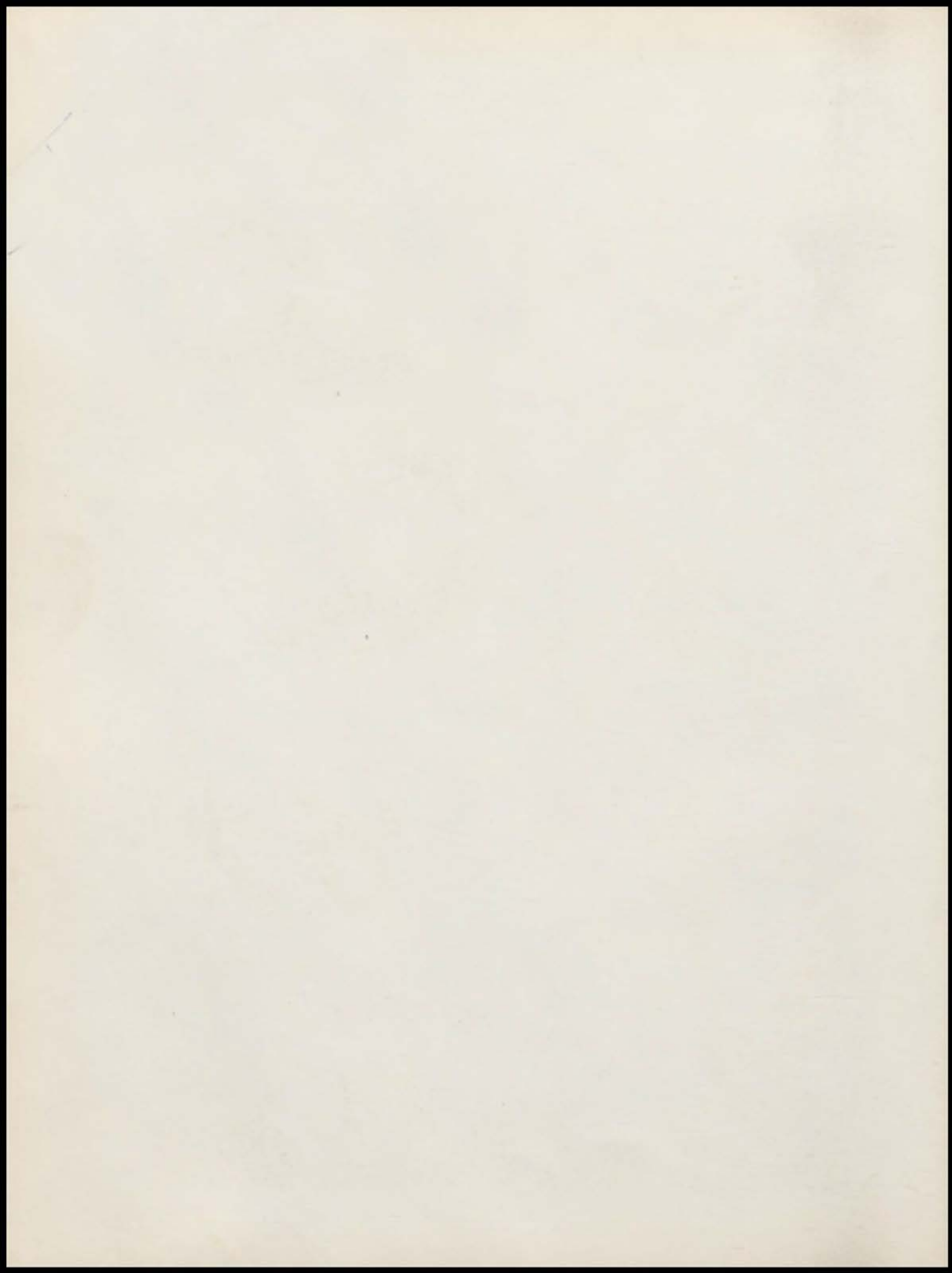




67



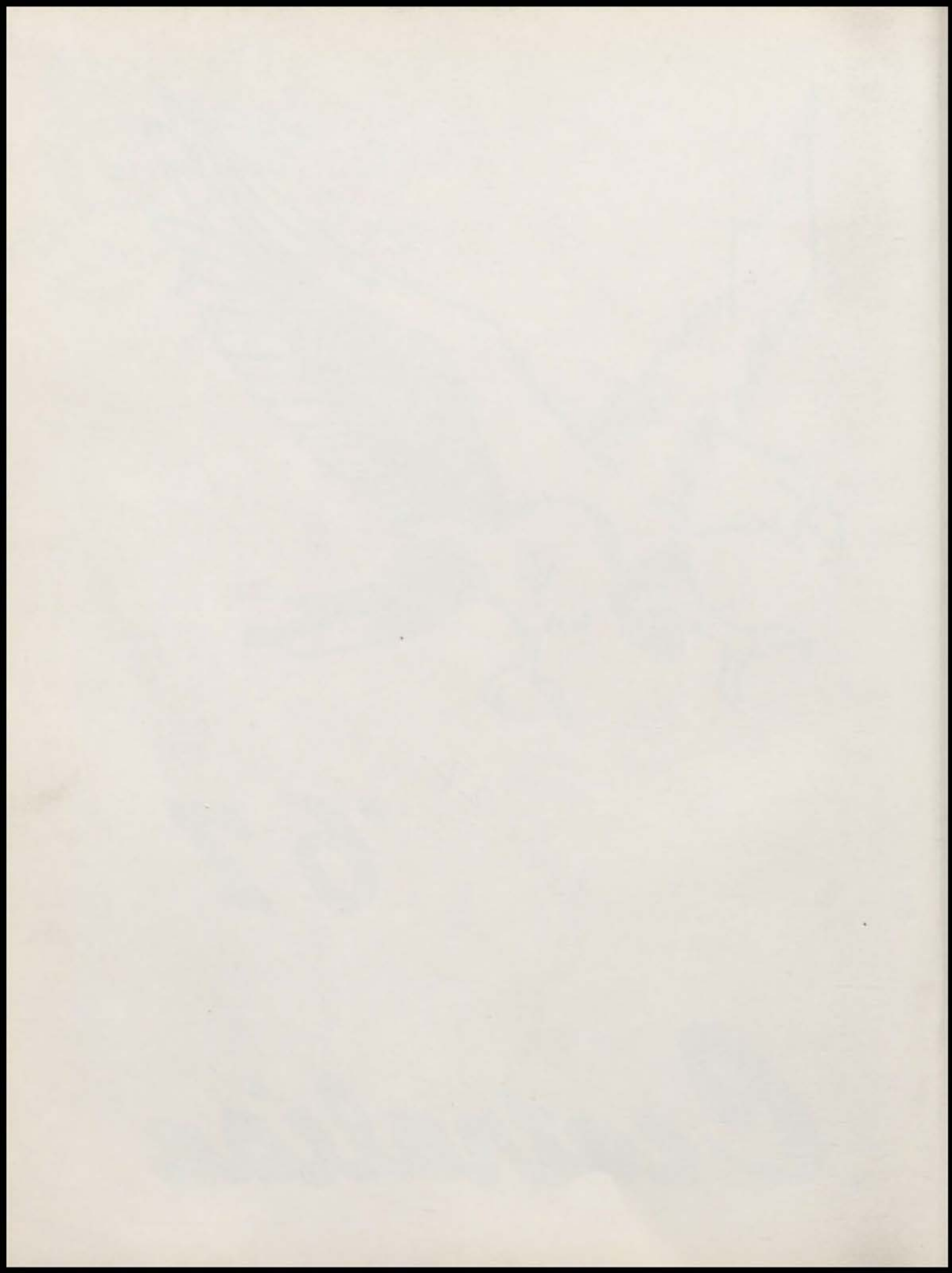


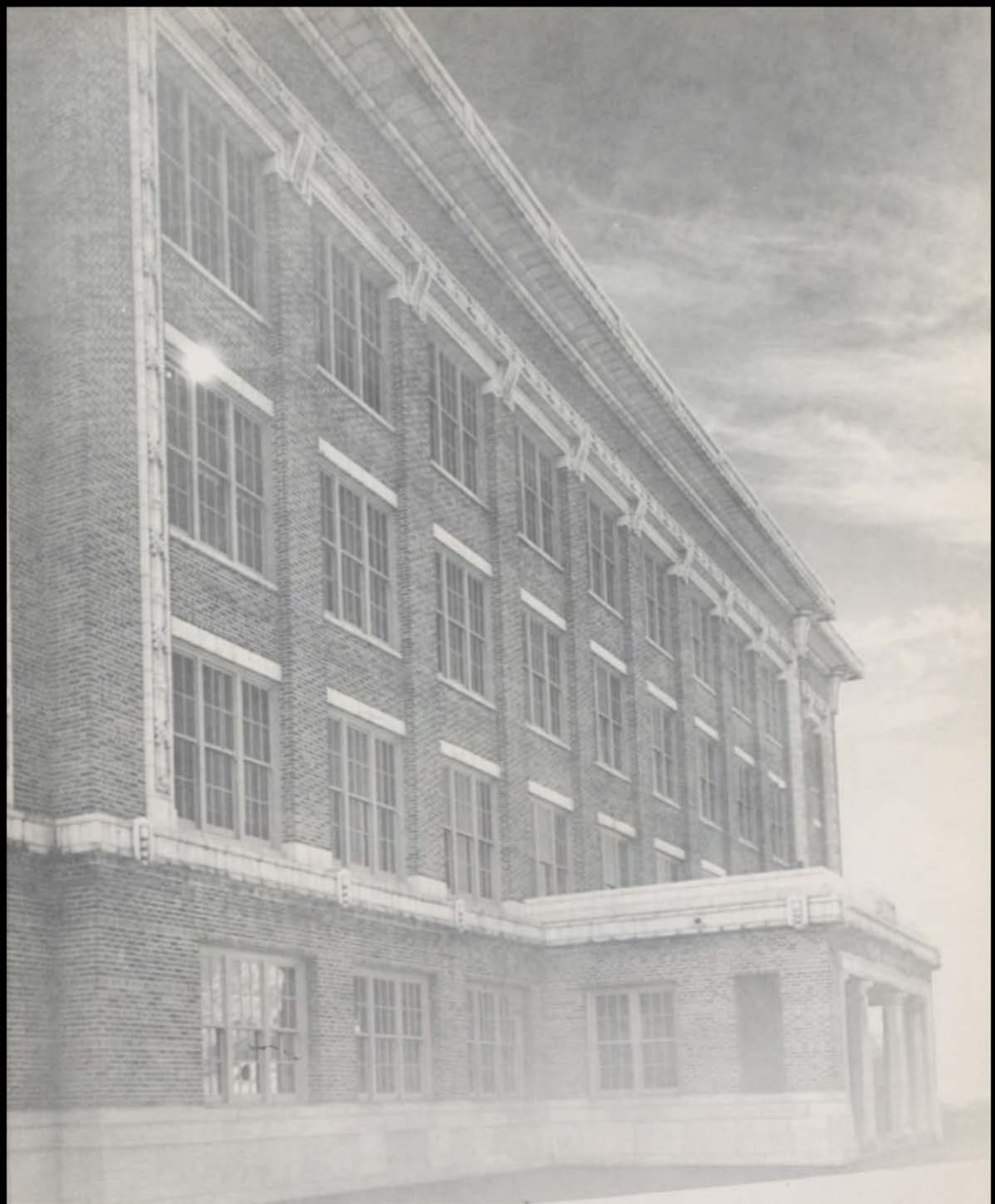




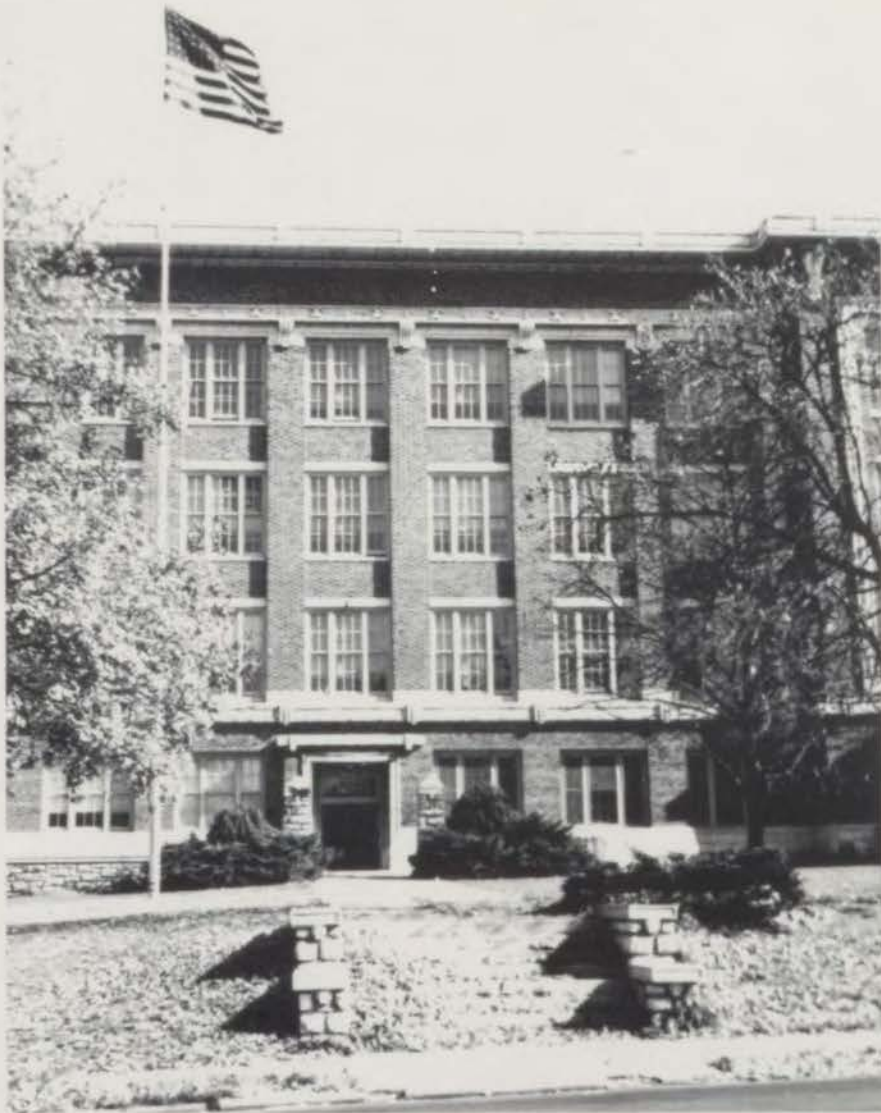
'67

*Centralian*





A massive structure of sand, clay, and steel symbolizing the individuals who utilize it. Infinite in knowledge, unwavering in character, and profound in leadership.



The door of education swings open in an effort to project it's lucrative opportunities to those who wish to enter. Each passage way is an enlightenment and each light burns on the fuel of your enthusiasm.

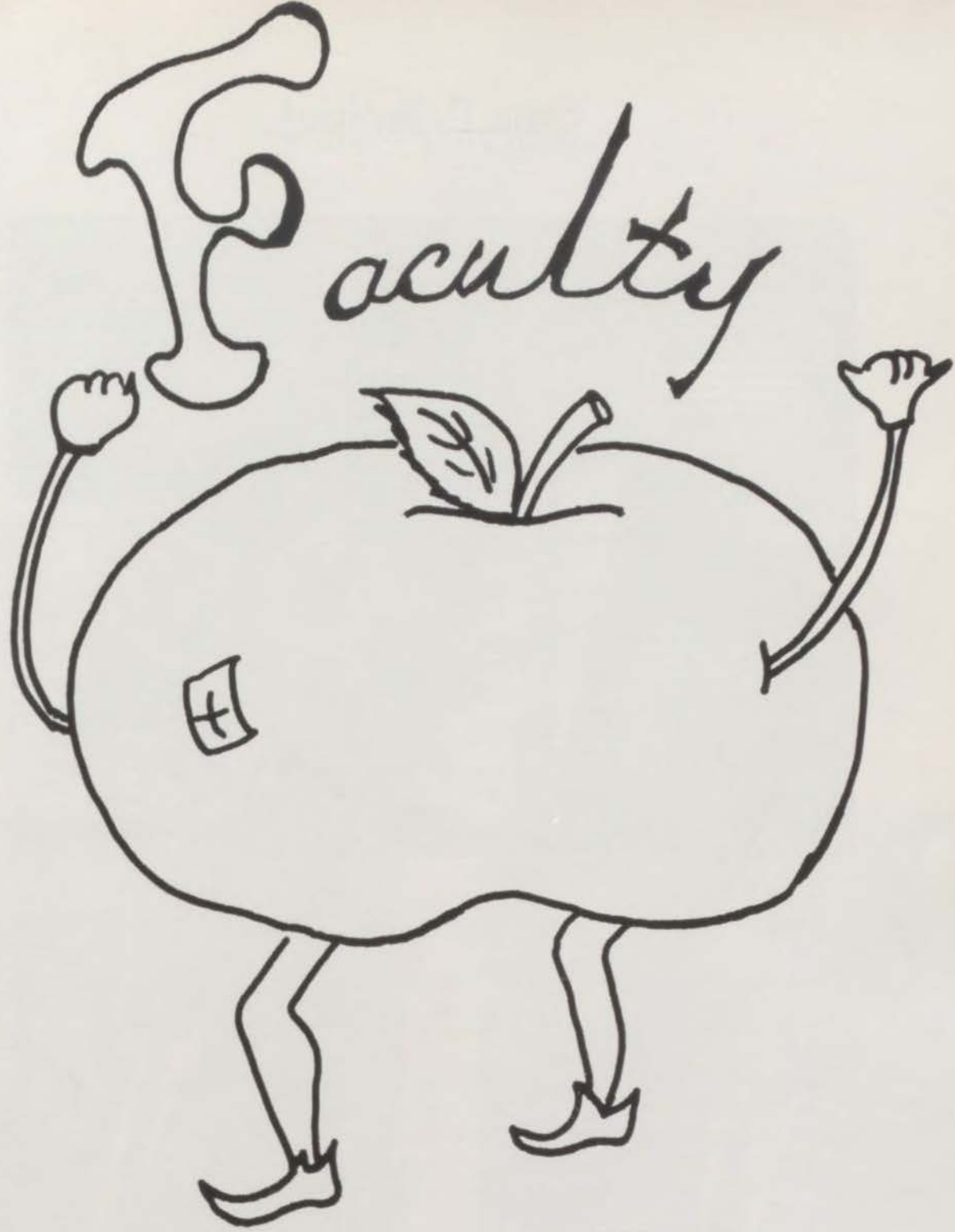


# Contents

Administration And Faculty	7
Seniors	21
Juniors	61
Sophomores	77
Freshmen	88
Organizations And Activities	100
Sports	155

# Foreword

In an effort to exploit the incomparable 1967 school year, the Centralian staff has labored to preserve the events of this year past. In the last nine months it has been a wholehearted struggle to preserve these experiences. Experiences are distinct sequences of life that are recaptured only by the vague dimension of memories. This is the dimension we have tried to animate. Never have so few given so much to so many in well-spent time, devotion and patience. As a result, we are proud to present the 1967 Centralian.



"mkt"

# Our Principal



TO THE CLASS OF "67"

In this age when it seems that many walls are being built--

Use your knowledge and your strength to build bridges:

Bridges of understanding to span the walls of prejudice--

Bridges of love to span the walls of hate--

Bridges of goodness to span the walls of evil--

Bridges of courage to span the walls of fear--

Bridges of peace to span the walls of hostility--

When you complete these bridges, your life, and the life of

All around you, will have great meaning.

Yours truly,

*J. F. Boyd*

Principal

## Vice-Principals



MR. HARRY L. CLOVERDYKE  
Seniors and Juniors



MR. CARL M. CONNORS  
Sophomores



MR. WILLIAM J. POLK  
Freshmen

# Counselors



MR. WILEY C. POLESON  
Seniors



MRS. EVA L. DIXON  
Juniors



MR. ROBERT R. SHORT  
Sophomores



MR. ARNOLD C. DAVENPORT  
Freshmen



MRS. CORINNE M. NEAL  
Freshmen

## Counselor Of The Year



TO THE CLASS OF 1967

During the last four years it has been my privilege to work and counsel with one of the very finest groups of young people to ever walk the halls of Central.

You have shared with me your triumphs and sorrows, your happinesses and disappointments, but through it all you have maintained a sense of balance and proportion and a dedication to the job at hand that has been a source of pride and inspiration to me as your counselor.

It is my hope that in the years to come you will continue to live and achieve by the code that we have all tried to follow--that we will plan for tomorrow and not drift on the sea of aimlessness.

Very sincerely yours,

*Wiley Polson*  
Senior Counselor

# Secretaries



MRS. G. ALLEN



MRS. M. DANIELS



Goodness Gracious!



MRS. L. HAYS



MRS. J. SICKMAN





WILLIAM ANDREWS  
Science



B. J. ARENSBERG  
Mathematics



HELEN BLACKBURN  
Mathematics



ROBERT BLOUNT  
Choir Director



ALBERTA BROWN  
English



FRANCIS BURKE  
Social Science



THEODORA BURNETT  
English



EVELYN CARUTHERS  
English



EVAN CLINE  
Science



HATTIE COLEMAN  
Special Education



JOSEPH COOPER  
Social Science



LAWRENCE DARDEN  
Industrial Arts



ELSIE DAVIS  
Nursing



LEE DAVIS  
Art



VIRGIL DAY  
Commerce



BETTIE DICKERS  
English



DONALD DOBBS  
English



DOROTHA DOUGLAS  
Language



LOUISE DOYLE  
Physical Education



BERNICE EVANS  
English



MELVIN FRANKLIN  
Social Science



GEORGE GARNER  
Mathematics



THOMAS GREENE  
English



HARVEY GREER  
Physical Education



LAWRENCE GRIFFIN  
Mathematics



ALBERTINE HADLEY  
Home Economics



AILEEN HARLINE  
English



VERNELL HARRIS  
Commerce



VANDORA HINTON  
English



INGRID HICKS  
Social Science



OGDEN HOLLARS  
Social Science



WILLIAM HOLLOWAY  
Social Science



HAROLD HUDSON  
Special Education



CLARENCE JONES  
Industrial Arts



VIRGINIA JONES  
Commerce



BRIGITTE KALLAI  
Language



HILDA KIRKENDOLL  
Nurse



MILOUS LUSK  
English



LINDA LOGAN  
Speech



EASTER MASON  
Home Economics



CHARLES MALEWSKI  
Mathematics



DANIEL McDANIELS  
Social Science



DONALD MITCHELL  
Mathematics



MAXINE MYERS  
Commerce



THOMAS MYERS  
Social Studies



MARY NELSON  
Speech



NORMAN O'QUIN  
Social Science



NAT PETERS  
English



KIETH RICHARDSON  
Mathematics



HENRY REED  
Mathematics



JACQUELYNE RHODES  
Family Relations



ELIZABETH RUTHLEDGE  
Mathematics



NOLEN RUTHLEDGE  
Mathematics



ELIZABETH SHEFFIELD  
Science



HARRY SLAYMAKER  
Physical Education



JOHN STAFFORD  
Mathematics



LEONARD STEPHENSON  
Vocational Education



GLORIA TERRELL  
English



ADELL THOMPSON  
Science



HERBERT THOMPSON  
Science



ANNA TURNER  
Home Economics



JESSIE TURNEY  
English



ELSIE UMLAND  
English



CLEMENT WAGNER  
Mathematics



BEVERLY WAKINS  
Social Science



JAMES WILKINSON  
Social Science



ROMONA WILSON  
Science



CHRISTINE WILLIAMS  
Social Science

## Tribute To Our Faculty

I do think that I'm speaking for the Mighty Class of "67", we have had our hard times and our disappointments but we sincerely appreciate everything that you have done and have tried to do to help us to prepare us for the FUTURE. Our GOAL that has met with gratifying success is to go through life remembering everyone of you in the kindness ways. In guiding the Class of "67" through the wide field of FOUR YEARS, most of us will never forget you. Thank You for all you have done for US.

LOVE TO ALL

GLENDIA SAMPLE  
FACULTY EDITOR

67



This little piggie failed the TEST . . .



Mrs. Gibson is always smiling . . . . .

Did you see that . . . . .



Can you blame me, I'm trying . . . . .



So what . . .



My class had 34% less cavities . . .



Papers, Papers, they never have any expression in them . . .



Mrs. Ruthledge's little black assignment book . . .

# Faculty Ballot

BEST DRESSED:	J. Cooper	B. Thompson
BEST LOOKING:	T. Myers	H. Coleman
BEST DANCERS:	C. Jones	V. Jones
BEST MUSICIAN:	J. E. Tinney	C. Neal
BEST ATHLETE:	Coach Greer	D. Stevenson
BEST ACTOR & ACTRESS:	W. Kelliker	A. Scott
MOST ALL AROUND:	C. Hays	E. Stevenson
WITTIEST:	R. Blount	E. Mason
MOST POPULAR:	J. Wilkinson	C. Williams
JOLLY GOOD:	E. B. Stevenson	B. Evans
PRETTIEST SMILE:	R. Weigers	A. Hadley
SOCIAL BELLE & BEAU:	Mr. L. Turner	Mrs. A. Turner
DONE MOST FOR CENTRAL:	J. Boyd	Office Ladies
MOST LIKELY TO SUCCEED:	H. Thompson	E. Umland





"molt"



Curtis Martin  
President



Tamara Bellfield  
Secretary



Sharon Curry  
Treasurer



Melva Tucker  
Vice-President

# Cabinet



Rhonda Hollis



Janice Henderson



Deborah Brown



Helen Carter



Daryl Thomas



Valerie Smith





ABSTON, ARGURTHA

ACKINS, GLADYS - Student Council, Pep Club, Girls' Rifle Team, Red Cross, Tri-Hi-Y.

ALEXANDER, SAWNIA



ANDERSON, MARY - COE, FNA, Junior Achievement.

ANDERSON, ULYCIA - Thespians, French Club, Student Council, Youth for Christ, Cameos.

ARMSTRONG, CLEVELAND



ANSLEY, CLARA

ASHLEY, SHIRLEY

BADGETT, ARTHUR - Tennis, Cross Country, Track, Latin Club, Centralian Staff.



BALDWIN, PATRICIA

BALDWIN, THEODORE - Football, Track, Tennis, Swimming, Wrestling, ROTC, Drill Team.

BARNES, FERNEL



BARTLETT, RON

BASS, VIRGILENE

BELL, ANTHONY - Camera Club

BELL, JANICE - Pep Club, AFS, FHA, FNA, Latin Club, Science Club, Cameos, French Club, Student Council.

BELL, JEREMIAH

BELL, LORAINÉ



BELFIELD, TAMARA - Red Cross, Spanish Club, Cheerleader, Tri-Hi-Y, Student Council, AFS, Senior Class Secretary, Homecoming Attendant, Basketball Princess, Centralian Staff.

BELLOWS, JOYCE

BENTLEY, JO ANN



BILLUPS, KATHLEEN - Madrigal Singers, Spanish Club, Tri-Hi-Y, Concert Choir.

BONWELL, ERNEST

BOWDEN, JAMES



BOWERS, ROBERT - Honor Corps.

BOWIE, RONALD - Student Council, Utopian Staff, Centralian Staff.

BOYD, PEARLENA



BOYD, LORENTZ

BRITTON, CARMELITA - AAUW, Pep Club, Declaratives, AFS, Science Club, Honor Society, Connoisseurs, Science Explorers, Mu Alpha Theta.

BRODIE, MELISSA





BROOKS, DEBORAH - Thespians, Cheerleader, Student Council, Tri-Hi-Y, Pep Club, Office Helper.

BROWN, BRENDA - Camera Club, Pep Club.

BROWN, CLARA - Pep Club, Olympians, Student Council, AFS, Nurse Helper.



BROWN, DEBORAH - Latin Club, Thespians, Tri-Hi-Y, Pep Club.

BROWN, FLOYD - Declaratives, AFS, Categories, Science Club, French Club, Honor Society.

BROWN, LINDA



BROWN, LOUISE

BROWN, RICHARD

BROWN, SHELTON



BROWN, SHIRLEY

BROWN, TERRY

BROWN, VICTOR - COE, Luminary Staff.



BROWN, ROLAND

BRUCE, WILLIAM

BRYANT, JOYCE

BUTLER, BRENDA - Pep Club.

BUNN, JULUIS - Football, Honor Corps.

BURLEIGH, CORRIE - Honor Society, Boosters, Pep Club, AFS, Mu Alpha Theta, Science Explorers, Band, Tri-Hi-Y.



BURTIN, JACQUE

BYERS, FAYE - Concert Choir, Pep Club, Madrigal Singers.

BYRD, DELLA - Pep Club.



CAGE, CHARLENE - Pep Club.

CAMPBELL, SEDELL

CANADY, BRENDA



CARR, BRENDA - Camera Club, FBLA, Pep Club.

CARR, WILLIAM

CARTER, HELEN - Honor Society, National Spanish Honor Society, Pep Club, Senior Class Cabinet.



CARTER, JAMES - Track, Football, Latin Club, Band, Orchestra.

CASEY, THEOTIS - Football, Tennis, Declaratives, Honor Society.

CAVOLE, RACIOR - Football, Basketball, C Club, Hi-Y.





CELESTINE, DONALD

CHAPMAN, BRENDA

CHISM, BRENDA - Student Council,  
Office Helper, Future Business Leaders.



CLARK, DELORES

CLARK, PAMALA - Honor Society,  
Mu Alpha Theta, Pep Club, Boosters,  
Tri-Hi-Y, Science Explorers.

CLAY, JOHN



CLEMONS, NATHANIEL

COLEMAN, BRENDA - Latin Club,  
Future Nurses, Pep Club, Tri-Hi-Y,  
Centralian.

COLEMAN, FREDERICUS - Science  
Club, AFS, Band, Great Book Society.



COLEMAN, GERALDINE

COLLINS, CLYDE

COOPER, JUANITA - Pep Club, Latin  
Club, FBLA, Girls Glee, Junior  
Achievement, Youth for Christ.



COSEY, CATHERINE

COX, CLAYLET

COX, JOHN



CROWFIELD, ALICE - Pep Club,  
Boosters.

CROUT, WILLIAM

CRAWFORD, MILDRED - Majorettes,  
FTA, FHA, Student Council, Cameos,  
Pep Club, Basketball Princess.



CUNNINGHAM, ROSEMARY

CURREN, YVONNE

CURRY, ERNESTINE



CURRY, SHARON - Science Club,  
French Club, Honor Society, Boosters,  
Science Explorers, Pep Club, Tri-Hi-  
Y, Student Council.

DARDEN, JOYCE - Cheerleader, Pep  
Club, Honor Society, ROTC Princess.

DAVIS, CECIL - Spanish Club, Cam-  
era Club, Pep Club.



DAVIS, MAURICE - Band, Orchestra.

DAVIS, RHONDA - AFS, Spanish Club,  
Honor Society, Student Council, Pep  
Club, Tri-Hi-Y.

DAWN, HENRY



DELANEY, BARRON - Track, Hi-Y,  
Honor Corps.

DEMERRY, RUBY

DENTON, HERBERT - Science Ex-  
plorers, FTA, Utopian, Chess Club,  
Swimming Team, Letterman, Stu-  
dent Council.





DILLARD, WILLA - FTA, Thespians, Boosters, Life Science, President, Pep Club, Student Council, AFS.

DODD, BARBARA - Spanish Club, Science Club, Student Council, Declaratives, AFS, FBLA.

DONAHUE, ANITA



DONNELLY, EDWARD

DOOLIN, DONALD - Football, Honor Corps.

DOUGLAS, MAE - Luminary Staff, Camera Club, Pep Club, French Club, Red Cross, FNA.



DUMAS, STANLEY

DUNCAN, TED

DUNN, COLONEL



DUNN, MARGARET

DYDELL, BERNIA

DYSART, RITA - Red Cross, Tri-Hi-Y, Latin Club, Twirlettes, Office Helper, Student Council.



EDISON, PATRICIA

EDWARDS, BETTY

EDWARDS, EVELYN - Youth for Christ, Chess Club, Latin Club, Luminary Staff, Science Club, Camera Club.

ESKRIDGE, LEARIA - Glee Club, Pep Club

ESTELL, SHIRLEY - Youth for Christ, Junior Achievement, FTA, Nurse Helper, Luminary Staff.

ESTELL, THERESA - Student Council, Red Cross, Pep Club, FTA, Honor Society, Cameos, Tri-Hi-Y, Centralian Staff.



ESTIS, LAURA, Pep Club, Youth for Christ.

FIELDER, JOYCE - French Club, Honor Society, Science Explorers, Band, Orchestra, Boosters, Connoisseurs, FTA, AFS.

FINLEY, LIZ - Honor Society, Centralian Staff, Student Council.



FOOTE, LYNN - Spanish Club, Latin Club, Student Council, AFS, Concert Choir, Tri-Hi-Y, Centralian Staff.

FORD, WILLIE - Mixed Chorus, French Club, Science Club, Track.

FORTMAN, ZEBEDEE



FOXX, CONSTANCE - Student Council, FTA, FBLA, AFS, Hall Monitor, Tri-Hi-Y, Drill Team.

FRANKLIN, BURNELL - Concert Choir, Pep Club, Madrigal Singers.

FREEMAN, BRENDA - Boosters, Pep Club.



FREEMAN, JOHNNIE - Spanish Club, Glee Club, Red Cross, Youth for Christ, Student Council, Pep Club.

FRYER, RONNELL

FULTZ, TERESA - FBLA, Pep Club.





GAINES, JUNE - Student Council, Spanish Club, FHA, FTA, Cameos, Tri-Hi-Y.

GARRETT, EILEEN - Science Club, Red Cross, Pep Club.

GARRETT, WINZOL



GASKINS, SANDRA

GILLIAM, SANDRA

GINES, LINDA - Honor Society, Pep Club.



GISSANDER, WILLIE

GIVENS, MARK - Honor Corps

GOLDSTON, MERLE - Football, Basketball, Track, Latin Club, Locker Patrol, Honor Corps.



GOODE, ROBERT

GRAHAM, PAUL - Camera Club

GREEN, DAYLE - Red Cross, Office Helper, Camera Club, Tri-Hi-Y, Homecoming Queen.



GRIFFIN, LARRY

GUNNELS, RUTH - Pep Club, Girls Glee Club, Camera Club.

HALEY, CHERYL - Sophomore Class Officer, Boosters, FHA, Tri-Hi-Y, Office Helper, Luminary.

HAMILTON, FRANCINE

HARDING, JUNE - Pep Club

HARRINGTON, PHYLLIS - Luminary, Camera Club, Olympians, Pep Club, Tri-Hi-Y, Student Council, French Club.



HARRIS, CLEMETINE - FTA, Declaratives, Boosters, Office Helper, Student Council, Honor Society.

HARRIS, HELEN - Usherettes, FTA.

HARRIS, KATHRYN - Latin Club, Mu Alpha Theta, Chi Epsilon Sigma, Utopian, Science Club, YFC, FTA, Camera Club, Debate Club, Student Council, Pep Club.



HARRIS, MARCIA - FTA, Spanish Club, Concert Choir.

HARRIS, SHIRLEY - Pep Club, COE, Student Council, Counselors Helper.

HART, CYNTHIA - Pep Club, Spanish Club, Thespians, Office Girl, Counselors Helper, Student Council.



HARVEY, JAMES

HAWKINS, FREDRICK

HAYES, BRENDA - Junior Achievement, Thespians, FBLA, Luminary, Cheerleader, Tri-Hi-Y, FTA.



HAYES, VIRGINIA - Pep Club, Red Cross, Student Council.

HAYNES, RICHARD

HAZLEY, OMAR - Football, Basketball, C Club, Honor Society, Declaratives.





HENDERSON, JANICE - Student Council, Tri-Hi-Y, Drill Team, Latin Club, Senior Class Officer, AFS, COE, Red Cross, FTA, Office Helper.

HENRY, RONALD - Track, Cross Country, C Club, Latin Club, Red Cross.

HERRING, BIRDIS



HICKMAN, MARGARET - Madrigal Singers, Choir A, Student Council, Tri-Hi-Y, Usherettes, YFC, FTA.

HIGGINS, EVERETT

HIGGINS, MICHEAL - Football.



HILL, BILLIE - Cameos, Tri-Hi-Y, Pep Club.

HILL, GREGORY

HILL, HENRY



HILL, JEAN - Olympians, Spanish Club, Utopian, Office Helper, Girls Rifle Team, Luminary.

HILL, LINDA - Honor Society, Student Council, Latin Club, Girls Rifle Team, AFS, Utopian.

HILL, WALTER - Football, Basketball, Track, C Club, Honor Corps.



HINES, TRUDIE - Red Cross, Student Council, Pep Club, Boosters, YFC, FBLA.

HODGES, DOROTHY - Pep Club, Student Council, Red Cross.

HOLLINGSWORTH, DEBRA - Pep Club, Student Council, Homecoming Princess.

HOLLIS, RHONDA - Concert Choir,  
Tri-Hi-Y, Senior Class Officer, Pep  
Club.

HOLMES, EUGENE

HOUSE, WILLIAM



HOWARD, MICHEAL

HUDSON, MARY

HUFFMAN, MARIAN



HUGHES, EVELYN - Spanish Club,  
Science Club, Tri-Hi-Y, Girls Rifle  
Team, FNA.

HUMPHREY, CELEST - COE, Pep  
Club,

HUTTON, LINDA



ISOM, SHARON - Student Council,  
Cameos, Thespians, Camera Club,  
Pep Club, Red Cross, Majorette, Of-  
fice Helper.

JACKSON, ANTHONY

JACKSON, DENNIS - Track, Band,  
Swimming, Spanish Club, Camera  
Club, Student Council.



JACKSON, DIANE - Camera Club,  
Cameos, Utopian, Thespians, Con-  
noisseurs.

JACKSON, ED - Student Council,  
Track, Red Cross, Tennis, Latin Club,  
Honor Corps.

JACKSON, MARQUITA - Junior Queen  
Basketball Queen, Boosters, Pep Club,  
Student Council.





JACKSON, LESLEY - Spanish Club,  
Student Council, FBLA, Tri-Hi-Y,  
Red Cross, Olympians.

JENNINGS, ERNEST - Football, Bas-  
ketball, C Club, Math Club, Honor  
Society, Declaratives.

JOHNSON, ALICE - FTA, Usherettes,  
Red Cross, Student Council, Concert  
Choir.



JOHNSON, BETTY

JOHNSON, BEVERLY

JOHNSON, CHERYL - FBLA, Camera  
Club, Office Helper, Pep Club.



JOHNSON, CLAUDETTE - Tri-Hi-Y,  
Girls Glee Club, FNA.

JOHNSON, JANICE

JOHNSON, JOYCE - Camera Club,  
Pep Club, French Club, Tri-Hi-Y,  
Red Cross, COE.



JOHNSON, LINDA - FNA, Concert  
Choir, Office Helper.

JOHNSON, MOSES

JOHNSON, PATRICIA



JOHNSON, PHYLLIS

JOHNSON, SONJA

JOHNSON, WILLIE



JOLLY, CHERYL - Honor Society, Student Council, Pep Club.

JONES, NORMAN

JONES, ROBERT - Football, Basketball, Track, Hi-Y, C Club, Student Council.



JONES, SHIRLEY - Red Cross, Pep Club, Olympians.

KAISER, GLENN - Football, Track, Student Council, Red Cross, Math Club, AFS.

KELBY, MAXINE



KIDD, HENRY

KNOX, ARNITA

KYNARD, GARY - Latin Club, French Club, Camera Club.



LANE, WILLIAM

LAW, CONNIE

LEE, MYRA



LEMAY, JESSY

LESTER, LARRY - Camera Club, Chi Epsilon Sigma.

LEWIS, GERALDINE - Pep Club, COE.





LEWIS, RONALD

LEWIS, TERRANCE

LEWIS, WILLA - Spanish Club, Honor Society.



LINDSEY, JANICE - Boosters, FTA, Sophomore Cabinet, Thespians, Honor Society, Pep Club, Tri-Hi-Y, Spanish Club.

LONG, GLORIA - Honor Society, Concert Choir, Cameos, Sophomore Class Officer, Latin Club, Madrigal Singers, Pep Club, Student Council President.

LOVELACE, ELIZA - Olympians, FNA, Camera Club, YFC, FBLA.



LUKE, WILLIE

LUNN, SHEDRICK

MABRIE, KENNETH



MACK, ANNIE

MACKEY, JOYCE

MADEN, SUSAN



MADDOX, LOWENSTINE

MADISON, JACKIE

MARTIN, CURTIS - Football, Track, C Club, Junior President, Student Council, Senior President.

MARTIN, WAYMAN

MASON, THOMAS - ROTC, Rifle Team, Camera Club.

MASSEY, CHERYL - Pep Club, Cameos, Student Council, Tri-Hi-Y.



MATHIS, GINGER - Latin Club, Student Council, Cameos, Office Helper.

MATHIS, LLOYD

MATLOCK, ROBERT



McBRIDE, WAYMAN

McCLAIN, GILBERT

McDANIELS, MYRTLE



McLEOD, GREGORY

McTYE, LAWRENCE - ROTC, Camera Club.

McSHANN, LINDA - YFC, Student Council, Drama Club, Pep Club, Office Helper.



McQUITTY, MICHELLE

MECOMES, ANDREA

MILLER, DEBORAH





MILLER, LOLA - Nurse helper, Girls Glee Club, Choir B, Red Cross.

MINOR, SANDRA - Pep Club, ROTC, Princess.

MITCHELL, RUBY - AFS, Latin Club, Red Cross, Tri-Hi-Y.



MONROE, ALLEN - Concert Choir A, Drill Team, ROTC, YFC, Madrigal Singers, COE.

MOORE, CAROLYN H. - Spanish Club, Student Council, Tri-Hi-Y, Drill Team, COE.

MOON, CONSTANCE - Science Club, Student Council, Office Helper.



MOORE, DONALD - Red Cross, Camera Club, Student Council.

MOORE, EUETTA - Student Council, Red Cross, Camera Club, Office Helper, F. B. L. A., Drill Team, Pep Club.

MOORE, MARGARET - F. B. L. A., Attendance Office Helper.



MOORE, SYLVIA - Pep Club, Red Cross, Office Helper.

MORGAN, OLIN - Football, Track.

MORRIS, LINDA - Pep Club.



MORRIS, PAUL - Student Council, Stage Crew, Locker Patrol, Honor Corps, Centralian.

MOSLEY, SHIRLEY - Pep Club, Red Cross.

MOZEE, WANDA - Red Cross, Student Council, Locker Patrol.

MURRY, HARLEN  
 MYERS, GWENDOLYN  
 NEAL, NEAPOLON



NORRIS, MARILYN - Mu Alpha Theta,  
 Honor Society, Spanish Club, Camera  
 Club.  
 NORTON, ALFREDA - Future Home-  
 makers of America, Tri-Hi-Y, Red  
 Cross, Luminary Staff, Cameos, Stu-  
 dent Council.  
 NUNN, ANDREW - Baseball, Football,  
 Basketball, Latin Club.



OSBORN, RAYMOND  
 OVERTON, JAMES  
 OWENS, MERLEY



PAGE, ANTHONY  
 PAGE, LINDA  
 PALMER, JEAN



PARKS, RONNIE  
 PARKS, WILLIE  
 PATTERSON, CYNTHIA





PATTERSON, PAULA

PAUL, LORRAINE

PEARSON, RUTH - Student Council,  
Science Explorers.



PEARSON, WILLA

PETERS, PATRICIA - Youth for Christ,  
Concert Choir.

HARRELL, ROSILIND



PHILLIPS, ROY

PIERCE, ARCHIE

PITTS, ROBERT



POOLE, PATRICIA - Concert Choir,  
Student Council, Thespians, Glee  
Club, Madrigal Singers, Tri-Hi-Y.

PORCHIA, ANTHONY

POWELL, BENJAMIN



POWELL, DELIA - Pep Club, Girls'  
Glee Club, Concert Choir.

POWELL, ROBERT

PRATT, BEVERLY - Pep Club, Con-  
cert Choir, Student Council.

PRICE, MICHAEL

PRINCE, TERRIAL - Future Business Leaders.

PRUITT, ARDELL



RAGLON, WILLIE

RAGSDALE, RONALD

RANKIN, THERESA - Office Helper, Future Business Leaders, Camera Club.



RANSOM, DONALD - Swimming Team, Latin Club, Red Cross, Student Council, COE, Tri-Hi-Y.

REECE, JANICE - Declaratives, Student Council, AAUW, Camera Club, Science Club, Honor Society.

RELIFORD, JOYCE



REESE, SHERRY - Varsity Cheerleader, Thespians, Centralian Staff, Pep Club Cameos, Tri-Hi-Y.

RIDGELL, CAROLYN - Future Business Leaders, Tri-Hi-Y, Office Helper.

RILEY, LOWYNTA - Spanish Club, Future Teachers, Future Homemakers, Tri-Hi-Y, American Field Service.



ROBERTS, BARBARA - Red Cross, Student Council, Office Aid.

ROBERTSON, GLENN

ROBINS, JOYCE - Honor Society, Science Explorers, Spanish Honor Society, Cheerleader, Spanish Club, Tri-Hi-Y.





ROBINSON, DENNIS - Centralian Staff, Student Council, Mu Alpha Theta, Junior Class Cabinet, Future Teachers, Thespians.

ROBINSON, FARELLA - Pep Club, Concert Choir, Spanish Club, Science Club, American Field Service.

ROBINSON, JEHU - Football, Concert Choir.



ROBINSON, LUCILLE - Science Club, Spanish Club, Red Cross, Mixed Chorus, AFS, Tri-Hi-Y.

ROBINSON, MARY - Honor Society, Mu Alpha Theta.

ROBINSON, TERRY - American Field Service, French Club, Science Explorers, Red Cross, Junior Achievement, Honor Society.



ROBINSON, WESLEY

ROCHESTER, DELORES

ROGERS, GEORGE



ROLLAND, JAMES - Football

ROLLINS, CLIFTON

ROUNDS, MAE



ROE, REGINALD

RUSSELL, RONALD

SAMPLE, GLENNDA - Student Council, Centralian Staff, Red Cross, Pep Club, Glee Club, Cameos.



SAMPSON, TERESA

SANDERS, ANN - Cheerleader

SAVAGE, TERRY



SAXTON, JESSICA

SCOTT, BOBBIE - Pep Club, Boosters, Spanish Club, Future Nurses, Student Council, AFS.

SCOTT, ELLA



SCOTT, GWENA - Honor Society, Red Cross, Student Council, Latin Club, Olympians, Thespians.

SHELTON, CARLOTTA - Future Teachers, Red Cross, Pep Club, B-Team Cheerleader, Student Council, Boosters.

SHELTON, PATRICIA



SIMMONS, STEVE

SINGLETON, CONNIE - Office Helper, Student Council, Red Cross.

SMITH, BARBARA - American Field Service, Student Council, Red Cross, Pep Club, Future Teachers, Tri-Hi-Y.



SMITH, CAMELLIA - Future Teachers, Science Explorers, Spanish Club, Red Cross, Counselor's Helper.

SMITH, GLENN - Football, Swimming Team, Track, Honor Corps, Thespians, Student Council.

SMITH, IRA





SMITH, JEROME - Football Team, Track, Swimming Team, Junior Achievement, Audio-Visual Aid, Tri-Hi-Y.

SMITH, MELVIN - Hi-Y, Future Business Leaders, Red Cross.

SMITH, MILDRED



SMITH, OSCAR

SMITH, TOIL

SPEID, BARBARA



SPOTWOOD, JULAINE - Student Council, Choir A.

STEVENS, MELOGEME

STEWART, DORIS



STEWART, NAOMI - Future Teachers, Future Homemakers, Future Nurses, American Field Service, Office Helper, Boosters.

STONE, SALLY - Human Relations, Future Teachers, Red Cross, Student Council, Usherettes, Tri-Hi-Y.

STEWART, VIOLA - Future Teachers, Student Council, Pep Club, Drill Team.



SUTHERLAND, MICKEY - Track

SWINTON, FRED

SYKES, HERMAN - Basketball, Future Business Leaders.

TALLEY, ROSE - Debators, Future Teachers, American Field Service, Concert Choir, Spanish Club, Madrigal Singers.

TATUM, VERNON

TAYLOR, ANTHONY



TAYLOR, ARTIE

TAYLOR, BETTY - Student Council, Red Cross, Future Teachers, Drill Team, Thespians, Twirlettes.

TAYLOR, ELIZABETH



TAYLOR, TERRIE - Future Business Leaders, Usherettes, Future Nurses, Red Cross.

TAYLOR, VEONA

TERRY, SARAH - Student Council, Future Teachers, Cameos, Counselor's Helper, Locker Patrol, Red Cross.



THOMAS, DARYL - Varsity & B-Team Cheerleader, Tri-Hi-Y, Office Helper, Pep Club, Centralian Staff, American Field Service.

THURMAN, GARY - Football, Basketball.

TOLBERT, DWIGHT



TOLBERT, MONICA - Future Business Leaders.

TOLBERT, WENDELL

TOOMEY, BERNARD - Swimming Team, C-Club.





TUCKER, DuJUAN - Concert Choir, Tri-Hi-Y, Madrigal Singers, COE.

TUCKER, MELVA - Senior & Sophomore Class Officer, Declaratives, Honor Society, Latin Club, Centralian Staff, AFS, Camera Club.

TUGGLE, ROSE - Concert Choir A, Student Council, Pep Club.



VANNOY, JOHN

VAUGHN, DIANE

VAUGHN, LEOLA - Camera Club, Future Business Leaders, Future Nurses, Red Cross, Tri-Hi-Y.



VERTREESE, JOHN - Spanish Club, Science Explorers, Camera Club, Human Relations.

WALKER, LESTER

WALKER, PATRICIA - Drill Team, Pep Club, Tri-Hi-Y, Red Cross, Y. W. C. A.



WALLACE, RUTH - Latin Club, Olympians, Centralian Staff, Junior Achievement, Camera Club, Student Helper.

WALTON, AJUANIA

WARD, ANTHONY - Camera Club, Swimming Team.



WARD, MARY

WATKINS, GLORIA

WATSON, PHYLLIS - Mu Alpha Theta, Office Helper, Student Council, COE.

WATSON, STEVEN

WATTS, JAMES

WEBB, ALMA - Boosters, Central-  
ian Staff, Tri-Hi-Y, Honor Society,  
Science Explorers, Thespians.



WEBB, BARBARA - Boosters, Sci-  
ence Explorers, Concert Choir,  
Girls' Rifle Team, Future Nurses,  
Tri-Hi-Y.

WEBB, FRED

WEEKLY, THEODORE



WEISNER, DWIGHT - Chi Epsilon  
Sigma, Future Teachers, Debators,  
Red Cross, Student Council, Swim-  
ming Team.

WELLS, RENÉ - Concert Choir, Stu-  
dent Council.

WHEELER, LEVI



WHITE, CAROLYN - Future Teach-  
ers, Tri-Hi-Y, Pep Club, Student  
Council, Future Business Leaders.

WHITE, JAMES

WHITE, MARVIN - Band, Mu  
Alpha Theta, Science Explorers,  
Declaratives, Honor Society,  
Categories Team.



WHITERS, SHERYL - Youth for  
Christ.

WHITESIDE, VIRGINIA - COE, Red  
Cross, Student Council.

WILKINS, LINDA





WILLIAMS, DETRA

WILLIAMS, EDDIE

WILLIAMS, GRACE



WILLIAMS, LAURICE - Band, Hi-Y,  
Science Explorers, Camera Club,  
Junior Class Cabinet.

WILLIAMS, MARCIA

WILLIAMS, MAURICE - Band, Hi-Y,  
Latin Club.



WILLIAMS, WILLIE - Track

WILLOUGHBY, ROSE - Olympians

WILSON, PATRICIA



WILSON, PEGGY

WISSLER, RITA - American Field  
Service, Honor Society, Declara-  
tives, Mu Alpha Theta, Boosters,  
Debaters.

WOFFORD, DON - AFS President,  
Declaratives, Science Explorers,  
Band, Categories, Honor Society.



WOODS, REGINALD - Varsity  
Swimming Team, Future Teachers,  
American Field Service, Spanish  
Club, Thespians, Red Cross.

WYATT, DONNA - Future Teach-  
ers, Future Homemakers, COE,  
Red Cross, Office Helper, Tri-Hi-Y.

YOUNG, STEVEN

YOUNGER, MAE

ZOLLAR, DONNA - Twirlettes, Student Council.

ALLEN, MARY



CLARK, CHARLES

FULLER, CLARA

GAINES, JUNE



HUDSON, MARY

KELLY, JEAN

KENNY, OTIS - Track



MC AFEE, WILLIE

NORRIS, MARILYN - Honor Society, Spanish Club, Camera Club.

PHILLIPS, MYRTLE



POWELL, ROBERT

SMITH, VALERIE - Honor Society, French Club, AFS, Camera Club, Science Club, Thespians, Senior Class Cabinet.

TOLER, CHARLOTTE - Honor Society, AFS, French Club.





BEST SCHOLARS  
Carmelita Britton and Floyd Brown



MOST POPULAR  
Dayle Green and Glenn Kaiser

# Senior Ballot



DID THE MOST FOR CENTRAL  
Valerie Smith and Curtis Martin



MOST LIKELY TO SUCCEED  
Corrie Burleigh and Marvin White



MOST ALL AROUND  
Carlotta Shelton and Ernest Jennings



BEST DRESSED  
Glenn Smith and Deborah Brown



MOST CAREFREE  
Robert Matlock and Brenda Hayes





BEST DANCERS  
William House and Donna Zollar



JOLLY GOOD  
Jessica Saxton and Clyde Collins



BEST LOOKING  
Daryl Thomas and Casson Rollins



BEST ATHLETES  
Phyllis Harrington and Raciol Cavole



BEST ACTOR & ACTRESS  
Dimitri Parris and Deborah Brooks



CLASS SNOOZERS  
Herbert Denton and Joanne Robins



SOCIAL BELIEVERS  
Melva Thomas and [unclear] Bykes



Alright you guy's...



You ain't mad is you?



Is this what they do at track meet?



Aw beep beep!!



Now this is what we're gonna do...



Hey for the Seniors!



Beauty at it's best.



Just be a pig, hear!



Aw, Sherry!



I got five aces. What you got?



I'll be...



Seniors are the best. YES!!!



Rain, Rain go away!



You must believe me!



The five Stairsteps.



You keep me hanging on.



Stuff!!



Just what are you trying to say?



Let the show begin!!



Everybody see Bob's new shoe.



What'cha looking at me for?



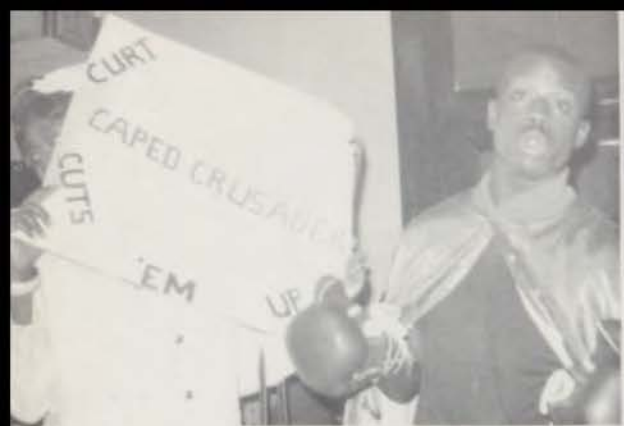
Hey! Those aren't our players.



A mock wedding.  
Are you sure?



Have a drink!



"Well... So I'M not Batman."



"How sweet it is!"



"I've felt this way before."



"Raid!?!?"



"Is this our basketball team or what?"



"Don't look now, but..."



"Please don't hit me."



"I want to go too!"



"Who said I didn't pay for this hot dog?"



"Maybe the Three Stooges?"



"What are you guys doing."



"Dog Sheeter, I said I wanted to make that touchdown."



Practicing for the Prom already? Hey! What happened?

Say man... What's in the cup?



Just ease it off so you can save the cuticle.

Sucker!!

It ain't THAT funny.



You take the one on the right and I'll...

Now... at the peak of my success...

Track meets in the dark now-huh?



That wasn't me!



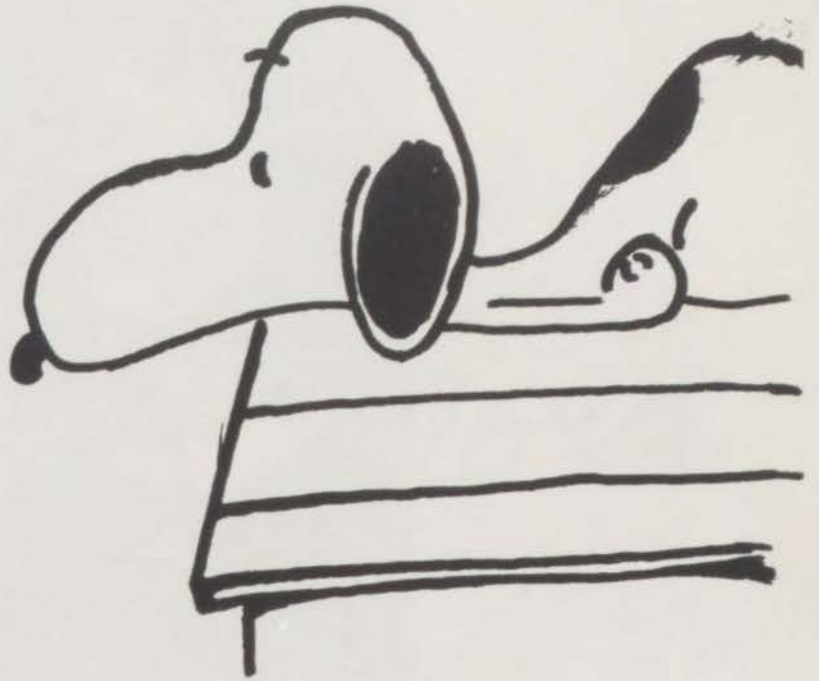
Come on... look like you're really having fun!



Please! Your breath may affect the reading!!

Senior Autographs





## Our Rita



"May thy name to all be hallowed, by my love for thee"--and for you, dear Centralites! This song will always remain in my heart. This year I have been so fortunate to spend with you has been a most enjoyable one. It has also been rich with new and rewarding experiences which will mark my whole future life. I am happy and proud that I have become a part of our "dear old Central." I want to thank all of you because you enabled my coming here and you have made my stay so wonderful.

*Rita Wissler*

Rita Wissler





Junior

"malt"



# GREATS





OFF





Diane Aldridge  
Willie Baker

Richard Allen  
Richard Barber

Charlesetta  
Anderson  
James Berryman

Evelyn Anderson  
Jacquelin Bass



Janice Adams  
Clyde Bagby  
Sharon Baucom  
Florene Black  
Clarissa Boyd  
Anita Brown  
Willard Brown



William Bolder

Michael Armstrong  
Karen Baucom  
Croliss Bell  
Larry Bonwell  
Janice Boyd  
Saundra Brown  
Yolandia Chouteau



Carol Brown  
Gregory Bruce

Marry Brown  
Dorothy Canady

Patrica Brown  
Gracie Canady

Sandra Brown  
Brenda Chandler





Denise Clay  
Alice Crump

Donald Clemons  
Beatrice Davis

Angie Collier  
Brenda Davis

June Conaway  
Donna Davis



Yvonne Clark  
Margie Copeland  
Saundra Davis  
William Denton  
Harold Epperson  
Richard Fierce  
Natalie Gaines



LaVern Cooper  
Harry Davis  
Gloria Dawn  
Michael English  
Diane Estis  
JoAnn Franklin  
Debbie Green



Marquetta Flowers  
Deidre Gandy

Rosetta Forest  
Samuel Goodrich

Jaimela Foster  
Johnnie Gordon

Onyta Freeman  
Grace Whitmore





Ronald Gunnels John Hall  
Deffanie Harris Thurman Henderson

Deborah Hamilton  
Andrew Henson

Joella Hawkins  
Alice Hill



Earl Greene  
Acquanitta Harris  
Edwina Hinch  
Steven Hoover  
Cordelia Humphrey  
Julian Hunter  
Jamesetta Jackson



Elaine Houston

Albert Harbin  
Myrelia Hill  
Beverly Hines  
Anita Hudson  
Harriet Hunter  
Eddie Jackson  
Burgess Jones



Lourie Hurtt  
Rhonda Jackson

Edward Ingram  
Jacquelin Jenkins

Katherine Irvin  
Rhonda Johnson

Anna Jackson  
Thomas Johnson





Jewell Jones  
William Lamette

Rosemary Jones  
Linda Lee

Sharon Jones  
David Lewis

Juanita Kemp  
Patrica Lewis



Grover Jones  
Sheliah Lawson  
Rickman Lewis  
Anita Lister  
Sharion Livingston  
Jerry Long  
Rhonda Martin



Johnny Kidd  
Rayford Lewis  
Rose Lewis  
Onita Lister  
Linda Locke  
Deborah Mansfield  
William McKinney



Leland Lyons  
Terry Massey

Marvena Lyons  
Rhonda Massingil

Frances Lastiee  
Arenda Mayfield

Darlin Mabin  
Barbara McCrary





Janie McShann  
Deborah Moore

Rosie Merritt  
Diane Moore

Phillippa Mezile  
Marshall Moore

Michael Miller  
Lexcine Morris



James McKinzie  
Marchita Monroe  
Leon Morrow  
Joycie Murphy  
Julia Nickerson  
Ethel Perkins  
Lena Pridgeon



Wilma Minor  
Woodie Morris  
Leonard Motley  
Raymond Newman  
LaVern Parks  
Reginald Price  
Willie Rayford



Larry Murry



Michael Perkins  
Linda President

Ronnie Petite  
Phillip Randle

Jacqueleen Plowight  
Bertrand Randolph

Michael Powell  
Kathryn Randolph







Kathryn Rice  
Essie Ross

Beverly Riley  
Linda Ross

Barbara Roberts  
Marsha Rowens  
Robert Robins  
Jennifer Rucker



Velma Smith  
Robert Rollins  
Patricia Sanders  
Bruce Scott  
Phillip Scott  
Stanley Scott



Robert Robinson  
Daisy Ridley  
Sharon Sappington  
Margaret Scott  
Shirley Scott  
Connie Smith



Truman Snow  
Glen Smith

Paula Shine  
Janice Smith

Adoria Simmons  
Phylis Smith  
Charles Simmons  
Michael Smith

Smile when you say that, PARTNER





Dorothy Taylor  
Phillip Tolbert  
Austin Vaughn  
Clifford Watkins  
Dewayne White

Jewell Taylor  
Vivian Tolbert  
H. L. Walker  
Evelyn Watts  
Wanda White

Renee Terrell  
Paulette Townsend  
Marvanella Walker  
Lafayette Webb  
Janice Whitmore

Mae Thompson  
Sharon Turner  
Dorothy Ward  
Letitia Nesson  
Deborah Williams

Susan Thompson  
Sheliah Turner  
Robert Watson  
Vida Wells  
Louise Williams

Erma Tolbert  
Marcia Vann  
Betty Watkins  
Barbara White  
Valerie Woods



Deborah Nade



Roger Weaver  
Dwayne White

Lafayette Webb  
Wanda White

Velda Wells  
Grace Whitmore

Dewey Wesson  
Janice Whitmore



Evelyn Watts  
Barbara White  
Glenda Williams  
Michael Williams  
Stella Williams  
Renee Williams



Letitia Wesson  
Deborah Williams  
Betty Watkins  
Sandra Williams  
Sylvia Williams  
Shirby Wright



Roddy Williams

Venesa Williams

Authur Wilson

Wathina Woods



Willa Zollar

## Junior Class Officers

J. Merritt, Vice-president; B. Riley, President; R. Weaver, Secretary;  
Second Row: S. Williams, Sergeant-at-Arms; E. Greene, Treasurer.



## Junior Class Cabinet

Row One: O. Freeman, M. Thompson, Row Two: E. Houston, N. Gaines.



# Junior Activities

## Jr. Week

February 13-17

All week long

the Juniors had a ball!

This is one of the many ways

We swing n' sway the Junior Way.

## Junior Tea

February 16

One of the many activities  
of Junior Week.

## Junior Dance

"What is Soul?" Ask any junior  
because after this dance every  
one of them should know.

## Junior Prom

April 8

Given by the Juniors for the  
Seniors as a going away present.

## Junior King

Robert Robinson

## Junior Queen

Terry Massey

HEY HEY HEY HEY Big J WE  
KNOW WE ARE OK.....

# Swing N' Sway The Junior Way



Junior  
King and Queen

Terry Massey and Robert Robinson

# IN MEMORY OF



## Marlyn Smith a Great of '68

The members of the Junior Class dedicate this page to Marlyn A. Smith, a fellow Centralite. She was known and admired by all. Her personality and good humor never failed.

As the days go on she will remain in our hearts as a friend and as a fellow great of '68."



# z Sophomores



"malt"

## Sophomore Officers



ROW ONE: Barbara Adams, Donald Shirley, Harriet Parks. ROW TWO: Venice Forest, Phillis Sargeon.

There has not been a class yet which hasn't felt that their class was going to be the best. Our class is no exception.

We had a bad start this year, but felt it "fading away" as we moved forward with enthusiasm under the guidance of Mr. Lusk, our sophomore sponsor.

Remember, just like little eaglelets turn into powerful eagles, we little sophomores will become mighty seniors.

Donald Shirley

# Sophomores



Carol Abel    Barbara Adams    Dorance Aldridge    Janice Anderson    Michael Ashby    Jeff Ashley    Dennis Arrington



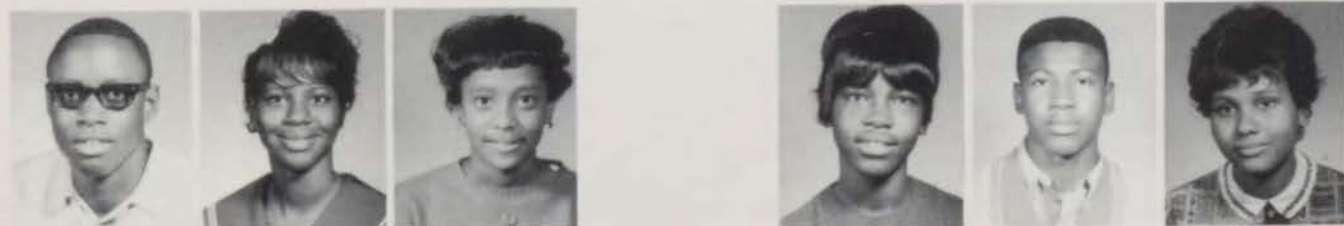
Ruth Babbs    James Banks    Pamela Barber    Carolyn Barnes    Anthony Bartlett    Larry Bartlett    Doris Baucom



Seeing is believing!



Maurice Bishop    Richard Blackman    Brenda Blakely    Lorene Booker    Terry Boone    Joyce Bowen    Patricia Boyd



Ronald Brooks    Marcellia Brown    Jenie Buie    Mary Burtin    Roy Burtin    Erma Canady

# Sophmores



Sylvia Canady



Herbert Carson



Gerald Carter



Jerri Christal



Artis Clark



Carol Clark



Elizabeth Clark



Lawanda Clark



Sandra Clark



Sharon Clark



Morris Clay



Michael Colbert



Victor Colbert



Edwina Coleman



Samuel Coleman



Raymond Collins



Karen Cook



Frederick Crawford



Maxine Crosslin



Wanda Crout



Shirley Crowfield



Lynn Crump



Elliott Culp



Yolanda Daugherty



Bernice Davis



Kenneth Deboe



Bemis Denson



Herbert Dicus



Lucius Dodson



Jerry Donahue



Deborah Duffel



Roy Dunn



Joyce Eddy



Jefferson Edwards



Rudy Elias



Willa Elion



Shirley Ellis



Gregory Ellison

# Sophmores



Deborah Emory



Udonia Erby



Cheryl Floyd



Della Foote



Sandra Former



Venice Forest



Linda Foster



Marvin Foster



Sharon Freeman



Jane Gant



Toni Gardener



Beverly Gayden



Marion Gerald



Thomas Geredine



"Now we know why everybody buys 'Farley's Mints' for social security".



John Goss



Steve Goss



James Graves



Martha Gray



James Green



Pearline Green



Ester Gunnels



Sarah Hamilton



Lou Hall



Kathryn Harris



James Harris



Stanley Harrison



David Hawkins

# Sophmores



Ronald Hayes Gwendolyn Heard Mona Helmon Sandy Hemphill James Henry Willie Hickman Carolyn Hill



Pamela Hill Beverly Hodges Denise Holland Margia Hollingshed Leo Howard Ronald Hughes Patricia Huskin



Deborah Ivory Deanna Jackson Mary Jackson Steven Jackson Wanda Jackson



Linda Jefferson Cordolia Jenkins Linda Jenkins Gerald Johnson Jackie Johnson



James Johnson Loyde Johnson Margaret Johnson Patricia Johnson Quinlyn Johnson Rebecca Johnson Reggie Johnson



Stephanie Johnson Steven Johnson Audrey Jones Eddie Jones Gayla Jones George Jones Joyce Jones

# Sophmores



Diana Kelly



Ernestine Kennedy



John Kinsey



Shirley Kyllis



Kathryn Lang



Janice Lee



Kay Locke



Lucius Long



Gail Love



Joetta Love



Willie Magee



Alexis Marks



Francis Marshall



Naomi Marshall



You win a few; you lose a few.



Wayne Marshall



Deborah Massey



Reginald  
Mayberry



Gregory McBeth



Daisy McCreary



Benjamin  
McDaniel



Patricia  
McDaniel



Christopher  
McFarlin



Patricia McGee



Barbara  
McGinnis



Janice McKelby



Francis  
McKissick



Evelyn Merrit



Jeffrey Miller

# Sophmores



Gladys Mills   Gwendolyn Mills   Donald Mitchell   Larry Mitchell   Ava Moore   Ronald Moore   William Mosley



Milton Myers   Janice Nelson   Linda Nelson   Albert North   James Osborn   Andre Page   Linda Paige



Jasper Parker   Harriet Parks   Betty Payne



Frank Peters   Rhonda Pinkney   Donald Pleasant



James Plowright   Diane Polk   Bernice Powell   Jacqueline Powell   Willie Powell   Lucius Price   Deborah Ragsdale



Perry Randle   Patricia Randolph   Maurice Rankin   Curtis Reece   Lawrence Reece   Carol Reed   Pearlina Reed



# Sophmores



Gregory Reeves



Mitchell Reeves



William Revoat



William  
Richardson



Rufus Ridley



Errol Riggins



Oletha Riley



Donald Roberson



Randy Robinson



Marilyn Rollison



Margaret Rose



Phyllis Routt



Marshall Rowens



Angela Ruff



You did THAT all by yourself?



Clifton Sample



Phyllis Sargeon



Vickye Sayles



Larry Scott



Terrance Scott



Donzell Seats



Michael Shade



Yvonne Shannon



Bishop Shaw



Vicki Shelton



Minta Sherman



Donald Shirley



Valeria Silvers

# Sophmores



Cleophus Smith   Lonzetta Smith   John Smith   Sterling Smith   Jean Sorrell   Cresita Spenser   Kenneth Stewart



Jarie Strange   Donald Strickland   Evelyn Sullivan   Alexis Thomas   Carolyn Thomas   Jewell Thompson



Laverne Thornton   Nancy Timmons   Anthony Trezvant   Charles Vanoy   Annie L. Wallace



Sarah Walls   Gary Walker   Tommy Walton   Connie Washington   Donna Washington



Kathryn Washington   Terrye Washington   Craig Watson   Marian Webb   Robert West   Anthony Wheeler   Byron White



Donald White   Dewayne Whitmore   Carlotta Whittaker   James Wilcox   Betty Williams   Carie Williams   Charlotte Williams

# Sophmores



Dallas Williams Judy Williams Odessa Williams Clifford Wilson Reginald Wilson



Linda Witherspoon Luther Woods



Alumni Day is having fun spreading gossip.



Herman Yarboe



"malt"

The Freshmen class of 1970 has overcome that first of four hard blocks in their high school career. They are here to gain knowledge, status, and respect, and are one-fourth of the way in achieving the full content of these goals.

They will remember that first day of school with the tension, confusion, and especially the feeling of not being wanted. The mixers, assemblies, and cafeteria confusion will remain deep in their hearts as they continue to conquer the remaining three years.

Loyalty, one of the key words to success is vital in the association of teachers and students. Loyalty cannot be blue-printed. It cannot be produced on an assembly line. In fact, it cannot be manufactured at all, for its origin is the human heart--the center of self-respect and human dignity. Use loyalty in relation to responsibility and honesty in relation to duty.

Freshmen, it is your duty to make your class, 1970, one of the top classes in Central's history.

Tamara Bellfield,  
Freshmen Editor



Fonda  
Antwine  
Jo Carol  
Blackman  
Sharon  
Britton

Gladys  
Ashby  
Mary  
Bolden  
Ruth  
Brock

Terrance  
Baldwin  
Charles  
Booker  
James  
Brooks

Olla  
Bartlett  
Diane  
Booker  
Ronald  
Brown

Delores  
Bates  
Jerry  
Bowden  
William  
Brown

Maxine  
Birmingham  
Joseph  
Boyd  
Regina  
Bruce

Romana  
Black  
Melvin  
Bradford  
Karen  
Burch

Charles  
Burrell  
Charles  
Chappelle  
Willie  
Cooper

Loretta  
Canady  
Larry  
Clayton  
Carolyn  
Copeland

Sandra  
Canady  
Anthony  
Clemoens  
Patrick  
Counce

Lujana  
Carr  
Alyce  
Coffey  
Sandra  
Davis

Ida  
Carter  
Constance  
Coleman  
Wyatt  
Day

Tony  
Carter  
Deidra  
Coleman  
Cynthia  
Dayton

Frederick  
Cason  
Herbert  
Cooper  
Gregory  
Dean





Sandra Dewberry  
Beatrice Elion  
William Foster

Clarence Dillingham  
Stella Ethern  
Jeanette Garnett

Gayle Douglas  
Margaret Ewell  
Karen Gentry

Wanda Dow  
William Farmer  
Theresa Goldston

Jacqueline Dudley  
Cheryl Finch  
Camlia Goss

Cornell Duley  
Anthony Fitzpatrick  
Denise Graves

Emmett Edwards  
Annette Foster  
Frances Greene



Sheila Haley  
Nathaniel Hall  
Barbara Hamilton  
Janet Harris  
Everett Hart



Tom Hasley  
Glenn Haygood  
Annette Hickman  
Allen Hill  
Garland Hill



Joe Hill  
Joyce Hill  
Cassandra Hunter  
Shalise Hunter  
Calvin Jacks



Linda Jenkins  
Brenda Johnson  
Deborah Johnson  
Vallorie Johnson  
Wendell Johnson



Freda Jones  
Joyce Jordan  
Marilyn Jones  
Ronald Jones  
Leroy Kuykendoll



Marilyn  
Lemm  
Beverly  
Lewis  
Sandra  
Loggin

Cherry  
Mallory  
Calvin  
Mallory  
Mary  
Manley

Gwendolyn  
Manning  
Margaret  
Marks  
Eugene  
Mayweather

Craig  
McDaniel  
Joyce  
McDaniel  
Michael  
McKelvy

Denise  
McLoed  
Bernice  
McMillan  
Betty Jo  
Miller

Shirley  
Miller  
Laveda  
Moore  
Theresa  
Moore

Everett  
Morgan  
Ella  
Moses  
Molly  
Murf



Debra Nash  
Larry Nash  
Linda Newman  
Bobby Nicholson  
James Nunn



Raynola Ortega  
Dorothy Perry  
Joyce Pouncil  
Otis Pratt  
Marsha Rankin



Armenda Reed  
Elinora Reynolds  
Pearlin Richard  
Percetta Ricks  
Kenny Roby



Janice Rollins  
Gloria Rucker  
Raymond Rucker  
James Ross  
Jerry Ross



Clyde Ruffin  
Tony Sayles  
Leon Scroggins  
Lula Shine  
Yvonne Shirley





Mary Smith  
Pamela Strickland  
Brenda Tobay

Xzana Smith  
Dorothy Taylor  
Renee Vann

Leviolet Snow  
Edwina Thompson  
William Vanoy

Aaron Strawn  
Demetria Thurman  
Janell Walden

Twana Smith  
Cynthia Stewart  
Cheryl Trezvant

Levi Snow  
Verrida Taylor  
Sandra Vann

Jeanette Sterling  
Jeanette Thompson  
Patricia Vaughn



Robert Washington  
Lawrence White  
Cheryl Wilson

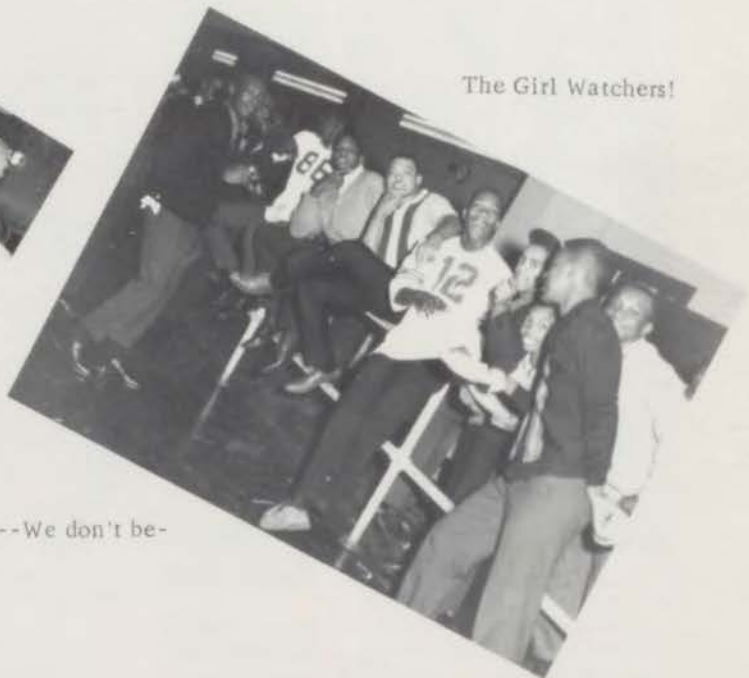
Michelle Wells  
Patsy Williams  
Venita Young

Joyce Webb  
Beverly Williams  
Robert Winfield

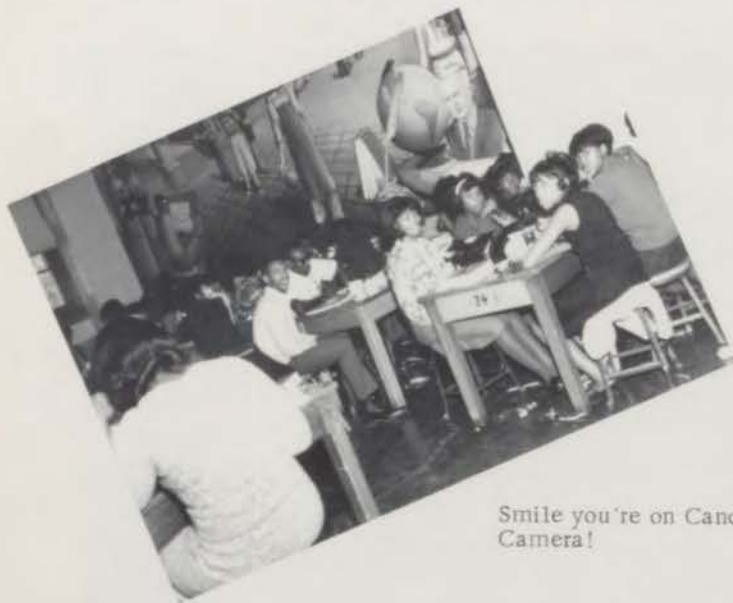
Melba Welch  
Janice Williams  
Sharon Wortham



Say What?--We don't believe it!



The Girl Watchers!



Smile you're on Candid Camera!



Once upon a time there were three bears...

Kansas City Chiefs... Or what?



# Freshman Signatures

# Freshman Favorites

the "Penguin"  
aliás....?



"we're odd... but we're COOL"

"MR. TERRIFIC"



"Mr. Charge"



RETREAT....

"REALLY"  
LILLY



ya think  
so  
Huh!

Whoop! Whoop!  
Whoop!



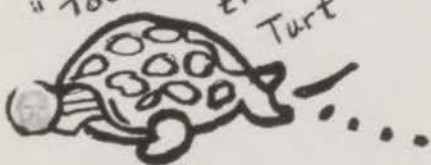
"Who said  
I was  
LOW DOWN?"  
"or was it  
DOWNLOW?"



My name is  
"Frigid Freeze"  
what's yours?



"Touche'  
the  
Turt"



"Mr. Aude"



SWISH



ROW ONE: P. Stricklin, Vice-president; A. Reed, President; M. Welch, Secretary. ROW TWO: M. Ewell, A. Coffey, S. Vaughn, L. Jenkins.

## Officers Of '70

FR  
R  
E  
S  
I  
M  
EN

§  
H  
P  
A  
R  
G  
A  
T  
I  
O

# Announcing

Tri-Hi-Y  
Latin Club  
Honor Society  
Red Cross  
Student Council

Declaratives  
Future Teachers  
Spanish Club  
Thespians





# P. T. A.



The P. T. A. is formed for the sole purpose of the betterment of the student body. Without the help of the student body and the help of the parents, this organization cannot function to its full ability.

Some of their accomplishments are: Garments made and contributions to Mutual help. Hours have been donated for sewing at the center. A student loan fund to assist students for emergency purposes. A league of the names of the 25 presidents hangs on the first floor wall north side of the auditorium. Certificates for increases in membership and Parent Education were presented to our P. T. A. Printed yearbooks of their year's work were made. Savings stamps and athletic tickets were sold. Busses were made available for the trip to St. Louis. Photographers were secured for Junior-Senior Prom.

This list shows the great work our P. T. A. has carried on. We hope they continue the same in the future.

## OFFICERS

Principal . . . . .	Mr. James Boyd
President . . . . .	Mrs. Charles Carr, Jr.
1st Vice-President . . . . .	Mrs. H. C. Jacks
2nd Vice-President . . . . .	Mrs. Paul Gibson
3rd Vice-President . . . . .	Mrs. Loyal Denton
4th Vice-President . . . . .	Mr. Lawrence Darden
Recording Secretary . . . . .	Mrs. Willie Skannal
Corresponding Secretary . . . . .	Mrs. Freida Y. Moss
Treasurer . . . . .	Mrs. Jesse Gonzales
Historian . . . . .	Mrs. John Wells
Parliamentarian . . . . .	Mrs. Ulysees Martin
Program Co-Chairman . . . . .	Mrs. Albertine Morgan
Parent Education . . . . .	Mrs. Milton Clark
High School Chairman . . . . .	Mr. Floyd Burleigh
Mutual Help Chairman . . . . .	Mrs. Harvey Brooks
Fathers Committee Chairman . . . . .	Dr. John Wells
School Education . . . . .	Mrs. Jessie Turney

# Student Council



ROW ONE: M. Wells, W. Zollar, J. Reese, M. Lyons, J. Gaines, D. Zollar, R. Banks, J. Thompson, V. Stuart, B. Dodd, C. Whittaker. ROW TWO: D. Weisener, D. Jackson, P. Townsend, S. Hicks, M. Walker, C. Mallory, E. Anderson, R. Matlock, A. Sanders, V. Smith. ROW THREE: S. Terry, D. Robinson, T. Snow, B. Pratt, M. Crawford, S. Hamilton, U. Anderson, C. White, S. Isom, R. Bowie, R. Johnson, C. Dayton.

## OFFICERS



ROW ONE: D. Robinson, D. Weisner. ROW TWO: S. Terry, U. Anderson.

# Student Council And Cabinet



ROW ONE: R. Madiock, R. Van, M. Marks, M. Wells, C. Wilson, C. Wells, W. Zolar, S. Scott, M. Lee, R. Merritt, D. Zolar. ROW TWO: S. Hamilton, S. Terry, L. Morris, S. Lawson, S. Curry, R. Talley, D. Jackson, D. Vaughn, P. Sherman, J. Saxton, D. Mabin, S. Clark. ROW THREE: T. Taylor, D. Estis, C. McGinnis, C. Moore, C. Whittaker, G. Johnson, C. Watkins, W. Lewis, C. Dayton, G. Long, G. Mathis, S. Smith. ROW FOUR: B. Hayes, S. Isom, N. Stewart, B. Jones, C. McFarlie, D. Moore, R. Bowie, R. Johnson, L. Williams, J. Vertreese, D. Wofford, M. Higgins.



ROW ONE: G. Mathis, Vice-president; G. Long, President; B. Pratt, Cabinet; R. Talley, Cabinet. ROW TWO: R. Bowie, Sergeant-at-Arms; N. Stewart, Secretary and Treasurer; M. White, Cabinet. NOT SHOWN: A. Badget, Cabinet; R. Pearson, Cabinet.



C. Britton  
S. Curly



E. Jennings  
P. Clark



R. Wissler  
T. Casey



C. Martin  
J. Darden



C. Burleigh  
J. Reece



V. Smith



G. Thurman



J. Robins  
Not Pictured



M. Williams



B. Pratt



B. Dodd  
W. Lewis



E. Finley  
S. Moore



C. Toler  
M. White



L. Gines  
A. Webb



C. Jolly  
D. O'Neal



B. Dodd  
W. Lewis



E. Finley  
S. Moore



C. Toler  
M. White



L. Gines  
A. Webb



C. Jolly  
D. O'Neal



B. Dodd  
W. Lewis



E. Finley  
S. Moore



C. Toler  
M. White



L. Gines  
A. Webb



C. Jolly  
D. O'Neal

## Silver



ROW ONE: F. Brown, S. Scott; C. Harris, J. Golston, L. Lee, R. Jones, D. Weisner, R. Weaver. ROW TWO: G. Scott, V. Tolbert, D. Jackson, N. Gaines, P. Sander, S. Baucom, K. Baucom, G. Long, T. Snow, S. Curry (Not Shown). ROW THREE: B. Johnson, L. Hill, C. Patterson, B. Riley, M. Tucker, M. Thompson, B. North, E. Houston, D. Estis. ROW FOUR: O. Freeman, M. Kelby, J. Foster, J. Conaway, D. Wofford, O. Hazley, M. Norris, U. Anderson.

## Bronze



ROW ONE: B. Davis, E. Gunnels, T. Washington, W. Zollar, L. Crump, D. Roberson, M. White, C. Clark, D. McCreary, P. Mezile, P. McDaniels, W. Bolton, J. McKelby, P. Sargeon, D. Wms. ROW TWO: S. Bank, W. Parks, S. Clark, A. Thomas, L. Nelson, R. Banks, C. Kennedy, V. Sayles, F. McKissich, L. Wright, B. Hodges, C. Spenser, D. Johnson, G. Jones.

# Declaratives

The "Declaratives" is one of Central High School's intellectual organizations. We strive for the betterment of our school through diligent co-operation with our administration and student body, seeking always to elevate our general standards of courtesy, competence, and championship.

The "Declaratives" can be counted on to give full support in promoting school activities, such as our Alumni Tea and the tea given for our Kansas City Philharmonic Orchestra when they play for our assembly programs. It is usually our responsibility to accompany any visitors or special guests (students or administration) throughout our building, giving them a personalized, guided tour. Another of our responsibilities is to supply our categories team.

The "Declaratives" is a school-spirit organization in the fullest sense. We are devoted not only to athletics, but to any and all functions where our school's name is involved.



F. Brown  
L. Lee  
M. Tucker



E. Jennings  
G. Thurman  
R. Wissler



C. Britton  
P. Clark  
C. Martin



J. Foster  
T. Casey  
D. Wofford



B. Pratt  
M. Williams  
C. Burleigh



B. Dodd  
C. Jolly



Sr.  
Tri-Hi-Y

ROW ONE: D. Green, S. Reese, D. O'Neil, J. Ganies, M. Tolbert, D. Zolar, B. Dodd, S. Stone, J. Fielder, E. Moore. ROW TWO: A. Knox, S. Terry, J. Henderson, S. Curry, A. Webb, D. Thomas, M. Jackson, J. Stewart, R. Davis, D. Jackson. ROW THREE: C. Shelton, R. Whistler, B. Riley, B. Smith, M. Tucker, V. Smith, D. Brooks, C. Haley, F. Norton, L. Foote, J. Saxton. ROW FOUR: B. Hayes, P. Clark, C. Burleigh, U. Anderson, T. Estell, M. Ward, B. Coleman, C. Britton, S. Isom, M. Williams, P. Harrington, D. Brown.



Jr.  
Tri-Hi-Y

ROW ONE: B. Scott, S. Hicks, D. Gandy, D. Mansfield, R. Merritt, M. Scott, Y. Chouteau. ROW TWO: J. Wilson, A. Jackson, D. Ward, J. Stewart, C. Brown, S. Turner, R. Terrell. ROW THREE: D. Standifier, L. Prigdeon, T. Woods, L. White, C. Toliver, D. Clay.



## Red Cross



ROW ONE: D. Green, A. Matlock, J. Taylor, D. Zollar, C. Mallory, C. Toler, D. Jackson, S. Kaiser, T. Robinson, W. Rayford, Jr. ROW TWO: R. Henry, R. Babb, N. Marshall, B. Watkins, B. Smith, R. Dysart, B. Johnson, T. Taylor, G. Acklin, D. Polk. ROW THREE: B. Coleman, T. Estell, C. Watkins, L. Walker, T. Brown, W. Williams, R. Williams, B. Bartlett, M. Goldston, D. Moore, E. Hughes.

## Freshman Tri-Hi-Y



ROW ONE: P. Ricks, J. Blackman, L. Carr, S. Davis, V. Taylor, K. Donnelly, D. Graves, X. Smith. ROW TWO: S. Pace, M. Welch, R. Richardson, P. Strickland, J. Rollins, R. Otega, A. Reed, C. Vaughn. ROW THREE: L. Moore, J. Harris, G. Waotham, T. Mitchell, D. Nunley, S. Kaiser, G. Morris, L. Jenkins.



Sr.  
Hi-Y

ROW ONE: G. Thurman, R. Jones, L. Mathis, R. Henry, J. Smith, J. Robinson, R. Matlock, F. Hawkins, M. Sutherland, A. Ward, O. Morgan. ROW TWO: E. Jackson, J. Woodson, E. Jennings, W. Hill, M. Smith, H. Sykes, E. Williams, W. Luke, R. Cavole, D. Doolin. ROW THREE: J. Moten, R. Parks, H. Murray, M. Golston, J. Bunns, R. Pitts, R. Goode, J. Watts, G. Smith, C. Martin



Jr.  
Hi-Y

ROW ONE: R. Price, H. Epperson, J. Smith, S. Hoover, W. McKinney. ROW TWO: C. Oakley, D. Clemons, M. Powell, A. Gibson, R. Hazley, C. Watkins.



## Sophomore Hi-Y

ROW ONE: R. Banks, M. Williams, M. Barton, O. Smith.  
 ROW TWO: W. Mosley, K. Jefferson, A. Howard, L. Doolin. ROW THREE: C. Watson, B. Williamson, A. Williams, J. Wells. ROW FOUR: D. Smith, R. Moore, M. Foster, M. Bishop.



## Freshman Hi-Y

ROW ONE: R. Jones, A. Clemmons, E. Morgan, G. Hill. ROW TWO: A. Strawn, W. Vannoy, T. Williams, W. Farmer. ROW THREE: D. Cason, C. Dillingham, J. Hill.

# Science Explorers



ROW ONE: L. Crump, L. Smith, H. Parks, K. Harris, E. Garrett, A. Webb, L. Lee, N. Stewart, R. Watkins. ROW TWO: R. Jones, C. Clark, D. Williams, P. Sargeon, W. Bolton, C. Roberts, J. McKelvy, K. Locke, P. McDaniels, J. Fielder. ROW THREE: M. Williams, F. Barnes, T. Bellefield, C. Harris, S. Scott, C. Humphrey, E. Perkins, G. Jones, D. Jackson, D. Jackson, R. Matlock, R. Johnson.



## Officers

ROW ONE: Mr. Thompson, B. Chandler, R. Jones, L. Lee. ROW TWO: B. Dodd, P. Sanders, C. Burliegh, S. Curry. ROW THREE: K. Rice, D. Wofford, M. Williams, J. Foster.

# Science Explorers



ROW ONE: F. Brown, L. Gines, J. Reece, D. McCreary, A. Thomas, P. Mezille, D. Roberson, B. Davis. ROW TWO: D. Aldridge, S. Moore, C. Abel, B. Harris, B. Wagner, L. Nelson, S. Clark, C. Jolly, V. Tolbert, R. Banks. ROW THREE: M. White, E. Houston, O. Freeman, D. Estis, M. Thompson, P. Williams, S. Scott, K. Jefferson, T. Snow, C. Watkins. ROW FOUR: J. Vertreese, G. Ellison, M. Cain, J. Wells, M. Burtin, J. Anderson, C. Britton, M. Helmon, J. Conway.



ROW ONE: E. Gunnels, B. Chandler, B. Davis, L. Lee, D. O'Neal, L. Gines, R. Jones, J. Reese, D. Roberson, D. Mezile, C. Toler, K. Locke, W. Bolton, J. McKelvy, L. Crump. ROW TWO: C. Clark, D. McCreary, C. Harris, J. Fielder, A. Thomas, R. Banks, P. McDaniels, D. Jackson, F. Coleman, H. Parks, L. Smith, N. Stewart, F. Brown. ROW THREE: V. Tolbert, A. Webb, C. Abel, B. Wagner, B. Harden, L. Nelson, M. Helmon, G. Johnson, C. Burleigh, J. Foster, M. Thompson, K. Harris, C. Haley, C. Britton. ROW FOUR: T. Snow, C. Watkins, R. Brown, M. Williams, B. Toomey, J. Wells, D. Wofford, G. Ellison.

# Thespians



ROW ONE: S. Reese, C. Mason, R. Barber, D. Zollar, R. Jones, A. Moore, W. Dillard, T. Garner, J. Jenkins, D. Jackson, M. Vann, C. Jolly, C. Boyd, M. Owens, Mrs. Scott. ROW TWO: B. Chandler, P. Smith, S. Curry, R. Washam, H. Parks, B. White, V. Forest, G. Scott, N. Lawson, S. Williams, C. Cox, B. Southall, J. Bell, M. Higgins. ROW THREE: V. Smith, J. Lindsey, C. Hart, M. Flowers, C. Shelton, J. Darden, D. Parker, R. Woods, B. Hayes, D. Moore, B. Pratt, D. Foote, W. Lane, M. Higgins. ROW FOUR: S. Isom, D. Brooks, T. Samuels, M. Thompson, M. Collins, A. Parchia, D. Robinson, U. Anderson, G. Smith, H. Jefferson, R. Johnson, M. Cain, P. Cooper, B. Taylor, D. Brown.



## Cabinet

ROW ONE: U. Anderson, Vice-President; D. Brooks, Secretary; R. Johnson, President. ROW TWO: D. Parker, Reporter; D. Robinson, Treasurer; Mrs. Scott, Sponsor.



Mr. H. Thompson, L. Lister, M. McMurray, D. Clemons.

D. Clemons, M. McMurray, L. Lister,  
Mr. H. Thompson.



Audio

Aid

Visual



Locker  
Patrol

ROW ONE: W. Ellion, L. Wright, B. Wagner, B. Hodges, O. Morgan.  
ROW TWO: R. Goode, G. Thurman, G. Smith, T. Brown, R. Cavole.

## Office Helpers



ROW ONE: C. Harris, M. Vann, C. Johnson, D. Moore, J. Freeman, T. Mitchell, M. Wilson, D. Green, B. Davis, I. Harrison. ROW TWO: V. Johnson, J. Sistrunk, T. Boyd, E. Anderson, B. Roberts, D. Byrd, A. Lister, L. Nelson, L. Hutton, W. Powell. ROW THREE: T. Estell, L. Foote, C. Haley, D. Aldridge, A. Hudson, E. Scott, M. Phillips, S. Moore, G. Scott, W. Ford.

## Nurses Helpers



ROW ONE: E. Ross, B. Watkins. ROW TWO: S. Stone, D. Williams, B. Woodson. ROW THREE: D. Smith, C. Reed, A. Taylor. ROW FOUR: S. Davis, L. Miller, R. Pierson.



## Office Helpers



ROW ONE: D. Thomas, J. Fielder, D. Jackson, E. Kennedy, K. Butler, G. Whitman, A. Crump, T. Rankin, W. Zollar, A. Johnson. ROW TWO: D. Brooks, L. Grayson, B. Harden, S. Madden, C. Kennedy, N. Steward, J. Gaines, A. Taylor, F. Coleman. ROW THREE: C. Singleton, R. Dysart, A. Wallace, J. Saxton, L. Johnson, B. Hayes, S. Isom, L. Walker, M. Tucker.



## Guidance Center

ROW ONE: S. Reese, A. Walton, M. Lyons, G. Dawn. ROW TWO: C. Smith, J. Lindsey, H. Smith, O. Whitmore, C. Moon. ROW THREE: U. Anderson, S. Terry, A. Wallace, C. Hart, T. Robinson.

# C. O. E.

C. O. E. is a program that combines academic skills with those skills that are necessary for an individual to have a successful job career. Practical application of skills learned in the classroom, such as interviewing skills and language arts skills, are put to use as the students obtain jobs. During the period of employment the students have a chance to observe the business world, take note of needed additional skills and perfect those already acquired. Many students have gone on to excellent jobs as a result of such a program.



ROW ONE: Mr. V. Day, M. Aldrige, C. Massey, C. Davis. ROW TWO: W. McBride, C. Johnson, J. Henderson. ROW THREE: P. Pouncil, P. Tolbert, M. Smith, S. Harris.



C.O.E.

ROW ONE: M. Anderson, C. Moore, C. Humphery, P. Watson, C. Fuller. ROW TWO: Mr. Day, D. Wyatt, J. Foreman, V. Whiteside, J. Johnson. ROW THREE: A. Monroe, D. Ransom, V. Brown, W. Thomas.



ROW ONE: Mr. V. Day, B. Scott, P. Patterson, R. Hollis, B. Kennedy, L. Page. ROW TWO: A. Pruitt, A. Knoxs, B. Johnson, A. Donahue. ROW THREE: G. Hill, A. Taylor, C. Dunn, S. Rogers, J. Bellows.

## C Club

The C-Club is an organization of the varsity athletes at Central. Although track, football, and basketball have provided the majority of its members, wrestling, swimming, tennis, and golf are beginning to come into their own.

Members of the C-Club perform many services to the school, such as Honor Corps, as well as providing an ardent cheering section during their off-season sport. C-Club activities are usually climaxed in the spring with their picnic.



ROW ONE: E. Jennings, G. Smith, W. Williams, D. Smith, G. Thurman, G. Kaiser, A. Ward, E. Riggins, D. Jackson. ROW TWO: R. McMurray, B. Jones, H. Davis, D. Ransom, W. Hill, J. Roland, M. Sutherland, R. Henry, S. Smith, J. Robinson, M. Goldston. ROW THREE: O. Hazley, M. Smith, J. Bunn, D. Doolin, H. Sykes, T. Brown, M. Foster, O. Morgan, E. Lee, R. Allen, M. McMurray. ROW FOUR: G. Ellison, J. Freeman, R. Hazley, W. Barker, B. May, H. Simmons, W. Parks, T. Casey, E. Bonwell, M. Higgins.

# Honor Corps



ROW ONE: J. Robinson, F. Hawkins, R. Matlock, R. Henry, G. Kaiser, E. Jackson, T. Brown, A. Page, T. Casey, D. Ransom, P. Morris. ROW TWO: W. Hill, G. Smith, M. Given, M. Smith, A. Franks, E. Williams, W. Parks, G. Thurman. ROW THREE: M. Golston, H. Sykes, L. Cole, R. Goode, J. Bunn, W. Tolbert. ROW FOUR: J. Van Noy, D. Clemons, R. Pitts, G. Bandy, T. Geredina, B. Delaney, R. Parks, S. Young.

# Camera Club



ROW ONE: D. Green, T. Rankin, E. Moore, J. Reece, C. Johnson, D. Thomas, C. Davis. ROW TWO: A. Wallace, B. Smith, D. Jackson, A. Ward, W. Rayford, B. Brown, R. Henry, L. Williams. ROW THREE: R. Weaver, B. Bartlett, M. Tucker, B. Carr, M. Douglas, D. Moore, A. Bell, M. Norris.



J. Taylor  
V. Woods



E. Lovelace  
M. McDaniels

O  
l  
y  
m  
p  
i  
a  
n  
s



L. Gines  
P. Smith



C. Brown  
R. Gonzales



G. Scott  
M. Kelby

# Olympians



F. McKissick  
M. Copeland



B. White  
J. Jackson

## Officers

Row One: S. Jones, Secretary; R. Willoughby, Sergeant-at-Arms; K. Harris, Treasurer. Row Two: J. Hill, Vice-president; Mrs. Doyl, Sponsor; P. Harrington, President.



M. Monroe  
P. Harrington



A. Jackson  
A. Wallace



ROW ONE: S. Curry, D. Zollar, J. Fielder, B. Freeman, W. Dillard, C. Harris. ROW TWO: J. Lindsey, N. Stewart, M. Jackson, B. Webb, P. Clark, Mrs. Stevenson. ROW THREE: A. Webb, A. Sanders, C. Burleigh, T. Hines. ROW FOUR: C. Haley, C. Shelton, B. Scott, V. Smith.



OFFICERS

- D. Zollar . . . . . Treasurer and  
Sergeant-at-Arms
- W. Dillard . . . . . Secretary
- Mrs. Stevenson . . . . . Sponsor
- C. Harris . . . . . Vice-president
- C. Haley . . . . . President

# Boosters



W. Dillard, C. Burleigh, V. Smith,  
P. Clark, T. Hines, A. Sanders.





## Pep Club

J. Robins, D. Thomas, V. Wood, S. Reese, J. Darden, T. Bellfield. ROW ONE: P. Ricks, R. Richardson, X. Smith, A. Minlan, L. Moore, D. Howell, B. Minton, S. Kaiser, M. Welch, J. Hill, M. Hill. ROW TWO: M. Euell, G. Morris, L. Newman, C. Clark, D. McCreary, D. Nelson, P. Green, L. Jekins, S. Dewberry, P. Strickland, W. Woods, R. Black. ROW THREE: A. Crump, M. Crass, J. Garrett, B. Williams, M. Rollison, S. Miller, L. Watkins, M. Helman, C. Able, E. Houston, S. Freeman, B. Freeman. ROW FOUR: S. Wright, J. Robertson, C. Whittaker, L. Locke, M. Burtin.

## Pep Club



ROW ONE: R. Johnson, B. Taylor. ROW TWO: W. White, M. Phillip, L. Miller, S. Johnson, C. Tolliver, L. White, J. Strange, D. Duffel, D. Mansfield, G. Heard, D. Aldridge. ROW THREE: M. Rowens, L. Clark, A. Merritt, S. Harrell, J. Williams, S. Crowfield, A. Thompson, P. Shine, M. Landis, W. Krout, D. Seats. ROW FOUR: B. Merrill, P. Rogers, A. Crowfield.



Officers

ROW ONE: V. Woods, Treasurer; B. Freeman, President; D. Thomas, Vice-president; Miss Logan, Sponsor. ROW TWO: A. Crump, Sergeant-at-arms; A. Crowfield, S. Wright, Sergeant-at-arms; M. Hill, Chairman.

## Drill Team



ROW ONE: B. Merritt, P. Rogers, D. Gandy. ROW TWO: L. Foster, R. Merritt, J. Smith, D. Wade, J. Davis, L. Clark, L. Parks. ROW THREE: M. Brown, R. Thompson, B. Jackson, J. Williams, L. Brown, D. Emery, M. Bowens, J. Riley, S. Machell, M. Copeland. ROW FOUR: L. Ross, M. Lunkins, S. Brown, M. McLean, P. Cheadle, B. Adams, G. Williams, D. Seats, P. Shine, W. Crout.



J. Strange

S. Johnson



L. White

C. Toliver

## Twirlettes



M. Phillips

D. Aldridge



R. Johnson, Captain

B. Taylor, Co-Captain



D. Duffel

J. Stewart



G. Heard

W. White



D. Mansfield

L. Miller

D. Zollar

R. Lewis





Company A

KNEELING: W. Revoal, R. Scott, G. Robinson, W. Denton, W. Thomas. ROW ONE: G. Hudson, J. Stark, J. Randolph, J. Henry, M. Kennedy, L. White, A. Adams, J. Collier, L. Daniels, M. Watkins, A. Brown; Company Princess. ROW TWO: D. Cain, G. Jenkins, R. Scott, D. Horton, R. Kines, A. McChester, R. Browning, W. Skyes, M. Bruce, E. Emerson. ROW THREE: N. Jones, R. Williams, C. Reece, D. Piper, R. Ford, A. Middlebrooks, C. Fletcher.

## R. O. T. C.

Company B



KNEELING: D. Hawkins, G. Herzog, J. Bowman, A. Monroe. ROW ONE: J. Dotson, H. Hall, G. Hill, W. Ridge, W. Dunson, B. Wallace, C. Demery, J. Roland, W. Brown, J. Freeman; Company Princess. ROW TWO: B. Owens, M. Mitchell, H. Ramsey, W. Mitchell, D. Homes, G. Hodges, S. Bell, L. Cuff, M. Perkins. ROW THREE: B. May, B. Releford, C. Dottrey, D. Whitmore, J. Burns, L. Clayton, J. Moon, O. Thompson, S. Sanders, C. Zollar.



Company C

KNEELING: J. Cowley, F. Peters, L. Woods, M. Allen. ROW ONE: R. Dunn, D. Randle, T. Johnson, T. Peters, G. Moore, A. Wash, A. Strawn, R. Rolan, M. Lyons; Company Princess. ROW TWO: L. Maye, J. Bland, L. Brown, G. Hill, H. Starr, W. Johnson, A. Vaughn.

## R. O. T. C.

Company D



KNEELING: M. Williams, J. Lemay, D. Smith, V. Tatum. ROW ONE: F. Fisher, A. Butler, M. Watson, C. Duley, E. Wallace, R. Windfield, R. Burdette, M. Sandifer, W. McDaniel, J. Snorgrass, R. Johnson; Company Princess. ROW TWO: L. Sidney, W. Lyons, S. Winchester, F. Mitchell, G. Lyons, C. McDaniels, K. Davis, J. Belcher, J. Hunter, R. Penn. ROW THREE: R. Powell, M. Rodgers, J. Drew, M. Berry, R. Banton, K. Scott, B. Jones, L. Henderson, C. Jones.



## Rifle Squad

KNEELING: L. Parker, T. Mason, R. Sanders, R. Roland. STANDING: J. Roland, Manager.

## Screaming Eagles



KNEELING: Lt. W. Revoal.

ROW ONE: J. Mason, J. Henry, E. Emerson, J. Snorgrass, F. Mitchell, R. Baton, Connie Smith, R. O. T. C. Queen. ROW TWO: J. Cowley, D. Cain, C. Jones, J. Bowman, M. Watkins. ROW THREE: R. Dunn, B. Jones, J. Burns, L. Clayton, F. Peters.

## Drill Team



KNEELING: W. Revoal, A. Barlett. ROW ONE: R. Sanders, Sergeant Simms, T. Mason. ROW TWO: L. Lyons, L. Parker, L. Mathis, L. McTye.



## Spanish Club



ROW ONE: L. Johnson, K. Locke, J. Blackman, P. Strickland, V. Taylor, Mrs. Cody, H. Carter, T. Washington, S. Banks, W. Bolton, D. Jackson, J. Reece. ROW TWO: O. Whitmore, D. Jackson, F. Jones, H. Parks, S. Kaiser, S. Clark, T. Golslon, C. Wilson, V. Silvers, G. Johnson, P. Sargeon. ROW THREE: E. Gunnels, Y. Clark, L. Jenkins, A. Watkins, M. Williams, M. Harris, A. Sanders, B. Scott, S. Brackson, J. Bowen, B. Williams. ROW FOUR: J. Lindsey, D. Foote, J. Robins, R. Johnson, D. Hawkins, M. Burton, M. Norris, D. Jackson, V. Forest.



## National Honor Society And Cabinet Members

ROW ONE: S. Banks, Mrs. Cody, H. Carter. ROW TWO: J. Reece, J. Lindsey, D. Jackson, D. Jackson. ROW THREE: A. Watkins, J. Robinson, M. Norris, D. Foote, V. Silvers.

## French Club



ROW ONE: Mrs. B. Kallai, C. Wilson, L. Williams, C. Gatin, D. Thurman, B. White, M. Welch. ROW TWO: Mr. J. Boyer, A. Simmons, C. Jolly, M. Bolden, C. Cowley, S. Miller, B. Hodge. ROW THREE: M. Crosslin, B. Elion, F. Carson, G. Ellison, R. Weaver, L. Wright, W. Elion.

## Latin Club



ROW ONE: C. Barnes, L. Gines, L. Parks, L. Clark, C. White, E. Kennedy, J. Taylor, R. Merritt, H. Hunter, N. Marshall, B. Gayden, R. Williams, B. McDonald, F. Coleman. ROW TWO: R. Smith, B. Williams, J. Buie, O. Riley, L. Stewart, G. Scott, P. Brown, R. Lewis, T. Fisher, R. Haynes, M. Myers, L. Foote, R. Dysart, A. Ward, M. Golston. ROW THREE: R. Henry, P. Young, E. Houston, D. Moore, L. Groves, J. Sistrunk, D. Mayberry, M. Owens, D. White, E. Edwards, L. Hill, A. Wallace, C. Moore, G. Marion. ROW FOUR: W. Williams, M. Tucker, R. Matlock, B. Coleman, E. Jackson, J. Carter, G. Kynard, T. Brown, P. West, L. Watkins, D. Polk, C. Watkins, B. Randolph, R. Pitts, B. Bartler.



## Latin Club Officers

ROW ONE: L. Parks, Secretary; L. Gines, President; E. Kennedy, Sergeant-at-Arms. ROW TWO: E. Jackson, Treasurer; G. Scott, 2nd Vice-President; D. Moore, Assistant Secretary; R. Matlock, 1st Vice-President.

## Chess Club



ROW ONE: J. Blackman, P. Smith, S. Baucom, F. Coleman, S. Watson, D. Arrington, D. Weisner, A. Monroe. ROW TWO: E. Jones, T. Johnson, G. Jones, D. Robinson, W. Rayford, E. Greene, D. Moore, W. Bruce. ROW THREE: L. Walker, T. Geredine, B. Jones, M. Givens, B. Bartlett, L. McTye, L. Lester, R. Fearce.

## Usherettes



ROW ONE: S. Stone, D. Jackson, B. Watkins, B. Johnson, P. Townsend, D. Woods, D. Mabin, L. Paul, M. Hickman. ROW TWO: T. Robins, H. Harris, J. Adams, V. Tolbert, S. Lawson, S. Williams, L. Hall. ROW THREE: M. Copeland, M. Lunkin, T. Taylor, T. Samuel, E. Vaughn, C. Boyd, R. Lewis, B. Southall, D. Mansfield.

## A.A.U.W.



Left to Right: J. Reece, V. Smith, C. Burleigh, C. Britton, J. Foster, C. Jolly, N. Gaines, D. Estis, R. Jones, L. Lee, R. Wissler.

## A. F. S.



ROW ONE: J. Reese, V. Taylor, F. Jones, P. Mezile, C. Jolly, L. Locke, C. Toler, C. Foxx, L. Merris, C. Coleman, J. Merritt, A. Webb, C. Mallory. ROW TWO: L. Jenkins, G. Merris, S. Kaiser, L. Newman, H. Carter, V. Tolbert, L. Hill, M. Scott, M. Flowers, J. Walden, S. Miller, C. Shelton, C. Mason. ROW THREE: T. Robinson, J. Foster, P. Clark, J. Fielder, D. Thomas, R. Wissler, J. Powell, B. Taylor, S. Isom, M. Williams, J. Conaway, C. Patterson. ROW FOUR: D. Wofford, T. Johnson, W. Tolbert, B. Toomey, V. Smith, C. Burleigh, M. Tucker, C. Britton, F. Cason, L. Walker, R. Rodgers.



## Cabinet

RIGHT TO LEFT: D. Thomas, V. Smith, R. Wissler, T. Robinson, C. Patterson, P. Clark, C. Burleigh, J. Merritt, J. Powell, C. Britton, D. Wofford, M. Williams.



ROW ONE: E. Kennedy, G. Ashby, T. Washington, W. Zollar, P. Strickland, E. Merritt, L. Morris.  
 ROW TWO: K. Mackey, W. Elion, B. Hodges, B. Wagner, L. Wright, B. Horden, S. Lawson. ROW  
 THREE: C. Foxx, D. Jackson, M. Myers, B. Adams, D. Foote, C. Dayton.

## Future Teachers

### Officers



ROW ONE: J. Lindsey, Secretary. ROW  
 TWO: W. Dillard, Treasurer; S. Terry,  
 Vice-President. ROW THREE: R. Pear-  
 son, Historian; N. Stewart, President; T.  
 Washington, Sergeant-at-Arms.



ROW ONE: W. Dillard, R. Talley, J. Lindsey, W. Zollar, R. Pearson, T. Washington, V. Stewart.  
 ROW TWO: E. Kennedy, P. Strickland, N. Steward, S. Lawson, L. Morris, S. Stone, J. Kemp, M. Lee, D. Taylor. ROW THREE: Mrs. Gibson, G. Ashley, M. Harris, M. Bolden, T. Estell, O. Bartlett, S. Terry, W. Woods, C. Foxx, B. Johnson, Mrs. Harris.

F.  
 B.  
 L.  
 A.



ROW ONE: S. Reese, C. Jones, L. Johnson, M. Tolbert, B. Dodd, P. Counce, X. Smith, B. Johnson, A. Hickman, D. Taylor, S. Haley. ROW TWO: E. Moore, J. McDaniels, D. Penn, C. Johnson, S. Curry, D. Zollar, S. Clarke, G. Johnson, L. Davis, M. Vann, T. Moore. ROW THREE: T. Prince, T. Taylor, B. King, V. Massey, S. Dewberry, D. Wilson, M. Monroe, B. Carr, M. Douglas, D. Holland. ROW FOUR: P. Sherman, C. Shelton, B. Hayes, B. Gorman, M. Franks, D. Moore, B. Taylor, H. Sykes, M. Moore.

## Debate



ROW ONE: J. Walden, T. Jones, R. Talley, A. Moore, ROW TWO: D. Williams, R. Caw, L. Walker, F. Cason, R. Wissler.

## Mu Alpha Theta



ROW ONE: D. Weisner, R. Jones, C. Harris, V. Tolbert, V. Woods, D. O'Neal, J. Reece, L. Lee, F. Mezile, H. Carter, E. Greene. ROW TWO: T. Snow, J. Foster, E. Houston, D. Estis, D. Robinson, B. Pratt, C. Shelton, S. Curry, J. Darden, L. Beene. ROW THREE: P. Tolbert, M. White, M. Norris, J. Conaway, E. Jennings, C. Burleigh, V. Smith, C. Britton, R. Weaver, S. Scott, N. Gaines.



## Tri-Hi-Y



ROW ONE: B. Scott, S. Hicks, D. Gandy, D. Mansfield, R. Merritt, M. Scott, Y. Choutau. ROW TWO: J. Wilson, A. Jackson, D. Ward, J. Steward, C. Brown, S. Turner, R. Terrell. ROW THREE: A. Crump, D. Standifer, L. Pridgeon, W. Woods, L. White, C. Tolliver, D. Clay.



## Supersiones Officers

ROW ONE: J. Wilson, President. ROW TWO: W. Woods, Secretary; C. Tolbert, Vice-president. ROW THREE: L. Ester, Chaplain; D. Mansfield, Treasurer; S. Turner, Parliamentarian.

# Luminary



STANDING: K. Rice, R. Davis. SITTING: S. Curry, Mr. Darden, B. Hayes.

P. Harrington, J. Bryant, J. Hill, B. Taylor, K. Rice.



E. Edwards, M. Higgins, G. Myers, S. Estell, D. Smith, L. Griffin.



# Staff

F. Tindall, R. Saunders, T. Mason.



F. Norton, S. Curry, R. Davis, C. Haley, B. Hayes.



# "See How They Run"

by Phillip King

The drama department, under the direction of Mrs. Andrea Scott, presented to the student body and faculty, "See How They Run," a three act comedy written by Phillip King. The production turned out to be one of the most successful ever staged and was played to a full house at both performances. The performances were given March 30 and March 31 in the Central auditorium. Central congratulates Mrs. Scott and her cast for a wonderful achievement.

## CAST OF CHARACTERS

Ida (a maid) . . . . .	Gwena Scott Deborah Brooks
Miss Skillien . . . . .	Barbara White
The Reverend Lionel Toop . . . . .	John Wells
Penelope Toop (his wife) . . . . .	Rhonda Johnson
Corporal Clive Winton . . . . .	Phillip Tolbert
The Man . . . . .	Reginald Woods
The Bishop of Lax . . . . .	Keith Jefferson
The Reverend Arthur Humphrey . . . . .	Dennis Parker Richard Barber
Sergeant Towers . . . . .	William Lane
Stage Manager . . . . .	Valerie Smith
Student Director . . . . .	Ulycia Anderson
Director . . . . .	Mrs. Andrea Scott

# Spring Play

## "See How They Run"



"Lionel, there's no need for you to get so excited."

Rhonda Johnson

John Wells

"Oh! I didn't see you there, Ida."



Barbara White



Rhonda Johnson

John Wells

"Hello---hello---This is the Vicarage. Mrs. Toop speaking... Who? Uncle Dudley!  
How lovely!"

"Will you be late back, darling?"



Rhonda Johnson

John Wells



Barbara White

Rhonda Johnson

Philip Tolbert

"Oh!"

"Shut up! shut up! I wouldn't marry you again if you came crawling to me on your bended knees; you're a mean, evil-minded little vampire..."



Philip Tolbert

Rhonda Johnson

## Glee Club



ROW ONE: L. Pridgeon, D. Green, C. Myers, L. Howard, M. Welch, M. Baker, R. Mead, L. Wesson.  
ROW TWO: V. Rolan, M. Denmon, R. Tabron, M. Scott, D. Dixon, R. Thompson, D. Emory, J. Lewis, R. Merritt. ROW THREE: J. Robertson, E. Houston, G. Morrison, R. Scott, D. Estis, R. Johnson, D. Holland, S. Crooks, M. Crosslin.

## Fresh. Girls Choir



ROW ONE: T. Smith, S. Brown, B. Kidd, R. Richardson, A. Foster, G. Asby, C. Wilson, M. Wells, M. Ewell, M. Davis, D. Graves. ROW TWO: P. Gragson, G. Angline, D. Booker, J. Rollins, S. White, S. Worthan, K. Johnson, T. Mitchell, C. Edd, B. Barnwell, R. Vann. ROW THREE: C. Trezvant, S. Cheadle, A. Coffey, B. Taylor, B. Williams, L. Falls, B. Williams, R. Elion, B. Sorrells, G. McFadden, L. McKinzy, M. Slaughter.



## Madrigal Choir



ROW ONE: D. Arbutnot, C. Bell, J. Powell, F. Byers, B. Franklin, L. White, A. Monroe, R. Ridley, S. Simmons, W. Sykes, K. Donnelly, M. Hickman. ROW TWO: B. Shaw, R. Scott, P. Poole, D. Powell, S. Turner, J. Robinson, G. Long, R. Dysart, B. Webb, S. Brown, W. White, D. Tucker, K. Billups. ROW THREE: J. Johnson, R. Franklin, M. Williams, W. Morris, L. Jackson, A. Bell, A. Durham, M. Rogers, L. Law, G. Reeves, W. Denton, C. Swinton.

## Concert Choir



ROW ONE: R. Tuggle, W. Woods, E. Jackson, B. White, L. Morrow, T. Edwards, J. Boyde, F. Robinson, R. Talley, R. Wells, A. Bostic. ROW TWO: P. Ford, C. Foster, G. Williams, J. Jackson, R. Kimes, J. Harden, D. Clay, M. Harris, J. Kimp, D. Count, S. Ethern, R. Swinton. ROW THREE: R. Fearce, L. Johnson, A. Jackson, P. Wilson, P. Peters, J. Spotwood, E. Scott, C. Walkins, E. Huffman.



Lynn Foote  
Theresa Estell  
Brenda Coleman  
Willa Dillard  
Sherry Reese



Ronald Bowie  
Editor-in-Chief

Candid shots of the Centralian Staff



Sherry Reese  
Lynn Foote  
Debra Brooks  
Willa Dillard



Laurice Williams

# Centralian Staff



Paul Morris, Publicity Manager

Tamara Bellefield, Assistant  
Freshman Editor

Mark Williams, Assistant  
Sports Editor

Willa Dillard  
Organization Editor

Patricia Brown  
Assistant

Daisy McCreary  
Assistant



Paul Morris

Glenda Sample, Faculty Editor

Mary Burton  
Assistant Business Manager  
Dennis Robinson  
Business Manager



Sherry Reese  
Assistant Freshman Editor  
Tamara Bellfield  
Freshman Editor

A. Ruth Wallace  
Assistant Senior Editor  
Glennnda Sample (Standing)  
Faculty Editor



Onita Freeman  
Junior Editor  
Linda Daniels  
Assistant Junior Editor



Theresa Estell  
Copy Editor  
Ronald Bowie  
Editor-in-Chief  
Brenda Brown  
Sophomore Editor



Alma Webb  
Sports Editor  
Melva Tucker  
Art Editor  
Daryl Thomas  
Senior Editor





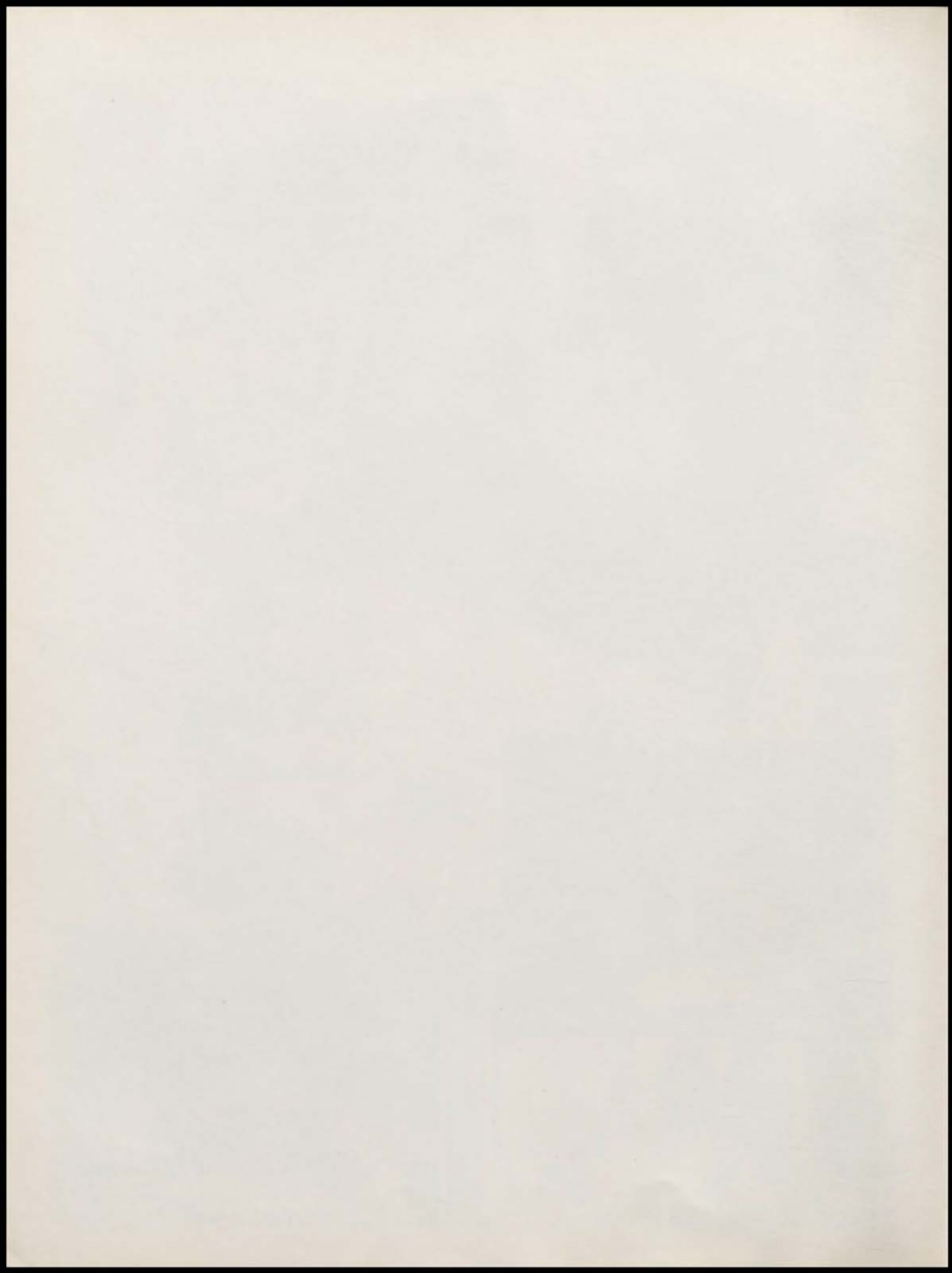
P. Morris  
O. Freeman  
M. Williams  
L. Daniels



Mr. Myers  
What is there to worry  
about?



Mr. Myers  
Success, maybe?



# Sports





Sherry Reese



Joyce Robins



Valerie Woods

## Varsity Cheerleaders



Tamara Bellfield

Eleanor Darden

Daryl Thomas







Linda Nelson



Julie Merritt

## Junior Varsity Cheerleaders



Alexis Thomas



Bernice Davis

Linda Daniels

Shirley Scott





ROW ONE, left to right: K. Jones, R. McMurry, E. Jennings, C. Martin, R. Cavole, W. Parks, G. Thurman, D. Smith, M. Smith, W. Hill, G. Smith, R. Jones, D. Doolin, M. McMurry, G. Ellison. ROW TWO: P. Simmons, Coach Hottenstein, J. Henson, T. Casey, D. Smith, J. Roland, M. Foster, O. Morgan, B. Williamson, J. Whitmill, G. Kaiser, S. Smith, J. Robinson, D. Clemons, Coach Michael, E. Lee. ROW THREE: M. Higgins, W. Barker, E. Bonwell, M. Bishop, M. Golston, O. Hazley, J. Bunn, M. Porter, C. Parks, J. Freeman, C. Davis, M. Powell, R. Allen.

## Varsity Football

This year was a very exciting year for Central's Mighty Eagles. Although not big, the team was blessed with an outstanding speed. The line was aggressive and the backfield was exceptionally swift and talented.

The Eagles finished the season with a 4-1-2 record which entitled them to the number three spot in the Interscholastic League. This year the Eagles played well but due to key injuries, they settled for third best. The team was able to produce a few for the All City Offensive and Defensive Teams in spite of the third place finish.

To the coaches, Mr. Michael and Mr. Hottenstein, and the captains, Walter Hill and Racior Cavole, and to the entire football team, Central bids sincere congratulations for an outstanding year.

# Football 1966



Coaches: J. Hottenstein, H. Michael



K. Jones, H. Simmons, E. Lee, G. Ellison



Eagles will fight!



Richard Allen



William Barker



Maurice Bishop



Ernest Bonwell



Julius Bunn



Theodis Casey



Raciore Cavole



Donald Clemons



Carl Davis



Donald Doolin



John Freeman

## Spotlight On The 19

Marvin Foster



Merle Golston



Omar Hazley



Andrew Henson



Michael Higgins



Walter Hill



Ernest Jennings



Robert Jones



Glenn Kaiser





Curtis Martin



Murvell McMurry



Reauxdell McMurry



Olin Morgan



Clarence Parks



Willie Parks



Melvin Porter



Michael Powell



Jehu Robinson

## 66 Football Team

James Roland



Dewayne Smith



Dwayne Smith



Glenn Smith



Marlyn Smith



Stanley Smith



Gary Thurman



James Whitmill



Byron Williamson



## "B" Team Football



ROW ONE: N. Grayson, G. Jones, L. Brown, P. Tolbert, M. Moore, C. Simmons, J. Allen, C. McFarlan, J. Stewart, R. Carter, R. McClain, L. Doolin, G. Smith. ROW TWO: C. Reed, T. Watson, W. Hickman, B. Weather, R. Weever, E. Rogers, K. Stewart, A. Wilson, A. Williams, G. Webb, M. Williams, G. Lyons. ROW THREE: Coach Arensberg, K. Deboe, J. Carter, J. Geredine, J. Robertson, B. Smith, W. Denton, J. Gletcher, R. Ridley, M. Bell, J. Banks, A. North, J. Reese, L. Bartlett, D. Haskins.

## Freshman Football

ROW ONE: R. Lawson, Coach Peters, M. Harvey, J. Connaway, W. Cooper, A. Boles, G. Morris, A. Williamson, H. Green, L. Casey, D. Caplin, E. Morgan, V. Webb, Coach Myers. ROW TWO: L. Stanley, O. Allen, R. Bryant, C. Dillingham, J. Randolph, J. Boyd, A. Clemmons, E. Maywesther, J. Belcher, W. Scott, H. Cavole, M. Woodard. ROW THREE: S. Brown, C. Bynum, M. Watkins, C. McDaniel, N. Hall, G. Hildebrand, R. Dunnell, T. Hasley, L. Cannon, D. Clark, C. Simmons, R. Brown.



# Cross Country



ROW ONE: T. Mason, R. Haxley, O. Kenny, R. Henry. ROW TWO: A. Badgett, J. Moon, C. Dottery, E. Riggins. ROW THREE: M. Sutherlin, W. Williams, H. Epperson. ROW FOUR: Coach Greer, B. Brown, T. Boyd, M. Smith, L. Mathis.

The 1966 Cross-Country Team experienced one of the most successful cross-country seasons ever had by an Interscholastic League Team. Led by seniors Ron Henry, Willie Williams, Mickey Sutherlin, Otis Kenney, Tom Mason, and underclassmen Richard Hazley and Errol Riggins, the Eagles ran to their second consecutive championship in the City and District Meet. Following these two victories, the Eagles captured fourth place at the State Championships in Columbia, Missouri.

The Junior Varsity also had a successful season. Tom Davis and Clarence Dottery smashed records at the Ruskin Invitation Meet and the team finished the season with their second place finish in the City Meet.

## "B" Team Track

ROW ONE: M. Rowens, D. Jackson, D. Nash, H. Carson, T. McClindon, J. Hannibal, R. Ragsdale. ROW TWO: J. Johnson, K. Stewart, A. Howard, J. Boyd, D. Whitmore, H. Cavole, A. Wheeler. ROW THREE: G. Ellison, D. Haskins, L. Stanly, R. Davis, B. Weathers. ROW FOUR: Mr. Hiegle, Mr. Greer, O. Golden, C. Wilson, R. Watson, Mr. Hottenstein.



# Varsity Track



D. Clemmons, O. Morgan.



C. Oakley, B. Mays.



C. Reed, B. Mays, C. Martin, A. Ward, S. Smith, J. Robinson, T. Boyd.



R. Hazley, R. Henry, M. Sutherlin, W. Williams.



J. Freeman, M. Golston, W. Parks.





Dale Green

## Homecoming Queen



Joyce Fielder and Debra Hollingworth

## Football Royalty

## Wrestling Team



W. Barnell, R. Weaver, T. Brown, T. Baldwin, A. Paige, D. Williams, J. Hooten, Coach Garner, L. Johnson, J. Allen, A. Howard, R. Collins, A. Fitzpatrick, W. McDaniel, J. Bunn, M. Hooten, R. Dunnell, B. Washington, A. Phillip, B. Aldridge.

In the fall of 1966, wrestling made its first appearance under the able coaching of Mr. George Garner. Although hampered during the early part of the season by inexperience, the Eagle Grapplers came on strong to place fifth in the Southwest Tournament with Julius Bunn and James Baldwin capturing first and James Hooten pinning down a third.

With the experience and enthusiasm gained this year, Central can look forward to a really successful season next year.

## Swimming Team

ROW ONE: T. Henderson, R. Swopes, J. Banks, L. Daniels, G. Walker. ROW TWO: T. Washington, A. Badgett, W. Smith, K. Stewart, G. Smith, Coach Heigel. ROW THREE: A. Henderson, H. Denton, W. Magee, J. Wells, R. Rogers.





MARQUITA JACKSON

## Basketball Queen



MARQUITA JACKSON, TAMARA BELFIELD, and MILDRED CRAWFORD

## Basketball Royalty



Captains: W. Hill and R. Cavole.

# Remember?



Senior Curtis Martain carries!

State



Champs

A. Ward, T. Boyd, R. Henry, and S. Smith.



Central Takes Second!



Here, our championship Eagles prepare for another victory in a pre-game warm up. This year's team has been one of Central's best and the students at Central should commend them for a job well done.

## Almost

### The 1967 Blue Eagles

The Central Blue Eagles, better known as the "Young Boston Celtics," had one of their best years by establishing a 24-1 winning record. Their only loss was to another top-rated team, the Joplin Eagles of Joplin, Missouri.

Although the loss came at the final game of the Missouri State Meet with a 58-53 overtime decision, Central played an outstanding game.

Considering Central had 24 winning games to their favor, were five times Interscholastic Champions, and were state champs the year before, the Centralites still feel that this year's team was one of the best Central has ever turned out.

The five outstanding players of the "Mighty Blue Eagles" were Herman Sykes, Ernest Jennings, Reauxdell McMurray, Murvell McMurray, and Omar Hazley. Graduating seniors on the team are Gary Thurman, Racior Cavole, Robert Jones, Melvin Porter, Ernest Bonwell, Omar Hazley, Murvell McMurray, Ernest Jennings, and Herman Sykes.

Returning next year from our Central Eagles are Reauxdell McMurray, Gary Bandy, Richard Allen, Marvin Foster, David Smith, and Byron Williamson. So don't be surprised if you see the Eagles make a return trip to St. Louis for the state title.

We would like to give recognition to our dynamic coach, Mr. James Wilkinson and his assistants, and Mr. Huitt. Without their aid, the Eagles would have been just another team.

## Jr. Varsity



ROW ONE: G. White, Manager; W. Mosley, M. Armstrong, M. Williams, B. Williamson, M. McGee. ROW TWO: E. McGee, K. Deboe, D. Smith, M. Foster, D. Strickland, A. Williams. ROW THREE: J. Pomroy, M. Powell, R. Strickland, S. Hopkins, M. Bishop, H. Sappington, L. Long, Manager.

We should like to congratulate this year's Junior Varsity for winning a share of the city championship. This is indicative of the championship teams to follow in the coming years.

## Freshmen



ROW ONE: W. Scott, A. Williamson, O. Allen, A. Strawn, W. Wallace, W. Johnson. ROW TWO: A. Clemons, Manager; J. Hill, C. Massey, F. Cason, C. Dillingham, E. Edwards, R. Lawson.



# Eagles In Action



Eagles in St. Louis

## SEASON'S RECORD LOST 1 WON 24

Central 65 - Springfield	55
Central 74 - St. Pius X	41
Central 55 - Rockhurst	38
Central 65 - Pem-Day	32
Central 69 - East	33
Central 66 - Van Horn	36
Central 82 - Lincoln	60
Central 77 - Paseo	54
Central 58 - Lincoln	51
Central 63 - Manual	48
Central 77 - Van Horn	48
Central 70 - Southeast	42
Central 57 - DeLa Salle	50
Central 64 - Northeast	35
Central 68 - St. Louis Sumner	53
Central 78 - East	46
Central 57 - Westport	34
Central 67 - Sumner	44
Central 62 - Southwest	42
Central 80 - Raytown	57
Central 68 - Paseo	48
Central 68 - Truman	56
Central 85 - DeLa Salle	70
Central 61 - Beaumont	50
Central 53 - Joplin	58



Omar Hazley goes for two.



Reauxdell McMurry with a left handed jumper.

Omar Hazley demonstrates his shooting prowess against Thorpe Weber.

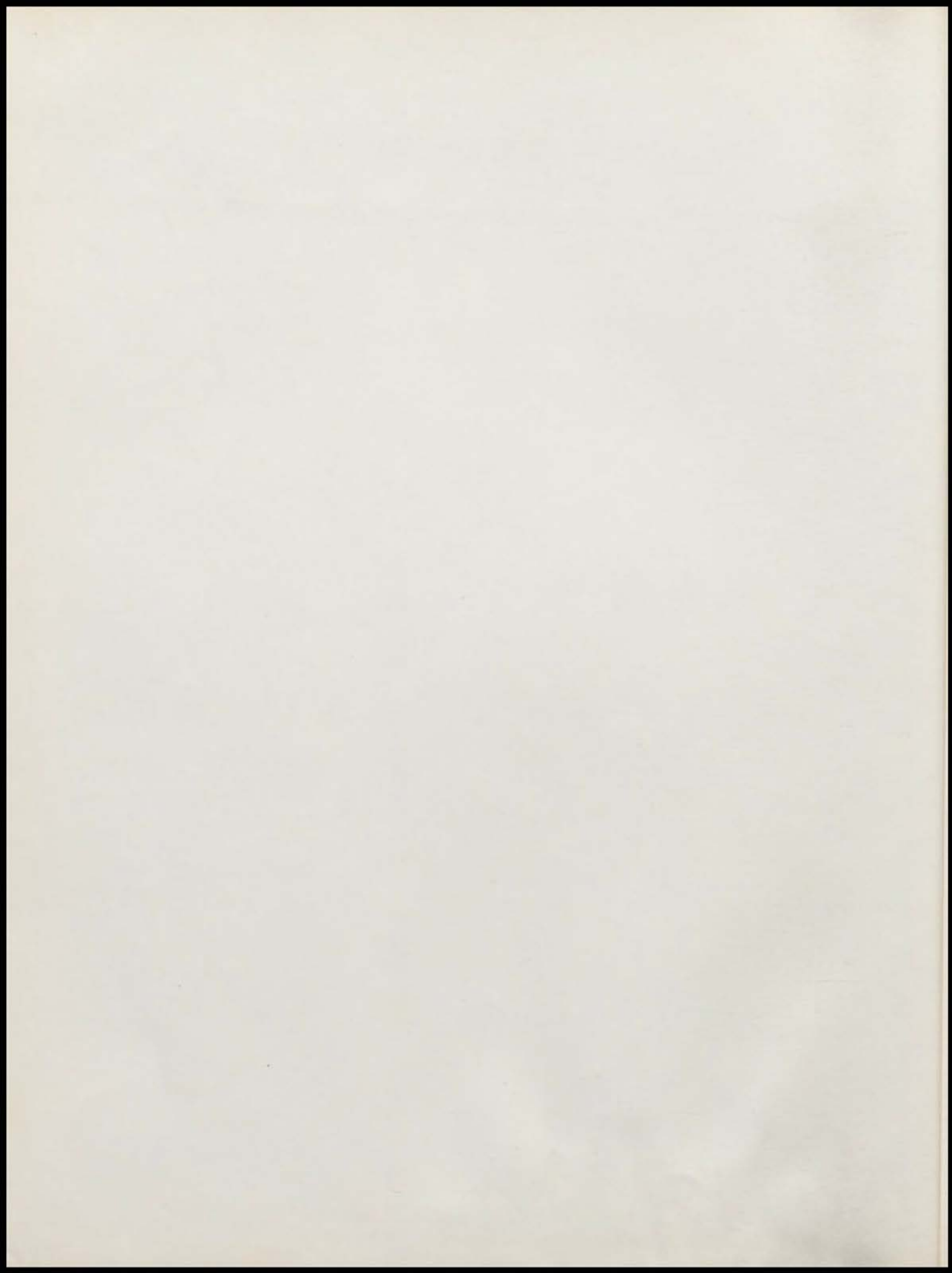


Ernest Jennings eludes all as he goes in for an uncontested lay-up.

Ernest Jennings gets off a jump shot despite the defensive efforts of Thorpe Weber, of Joplin.



Herman Sykes takes flight in an effort to elude a Joplin player for a sweeping lay-up.



That Special Page For That Special Someone

Favorite Food

My Favorite "Wax"

Favorite Dance

"Boss" Friends

Favorite Color







