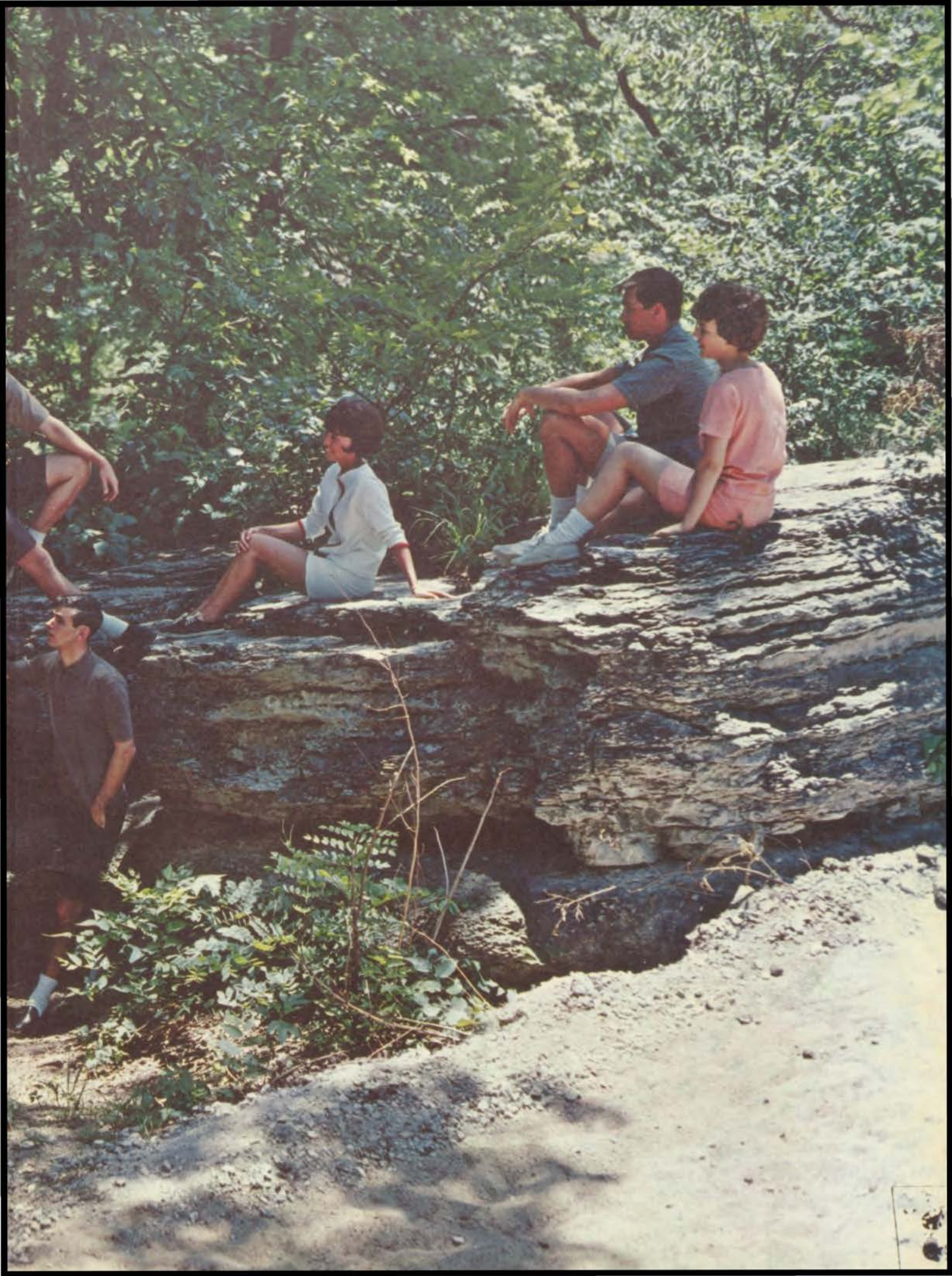


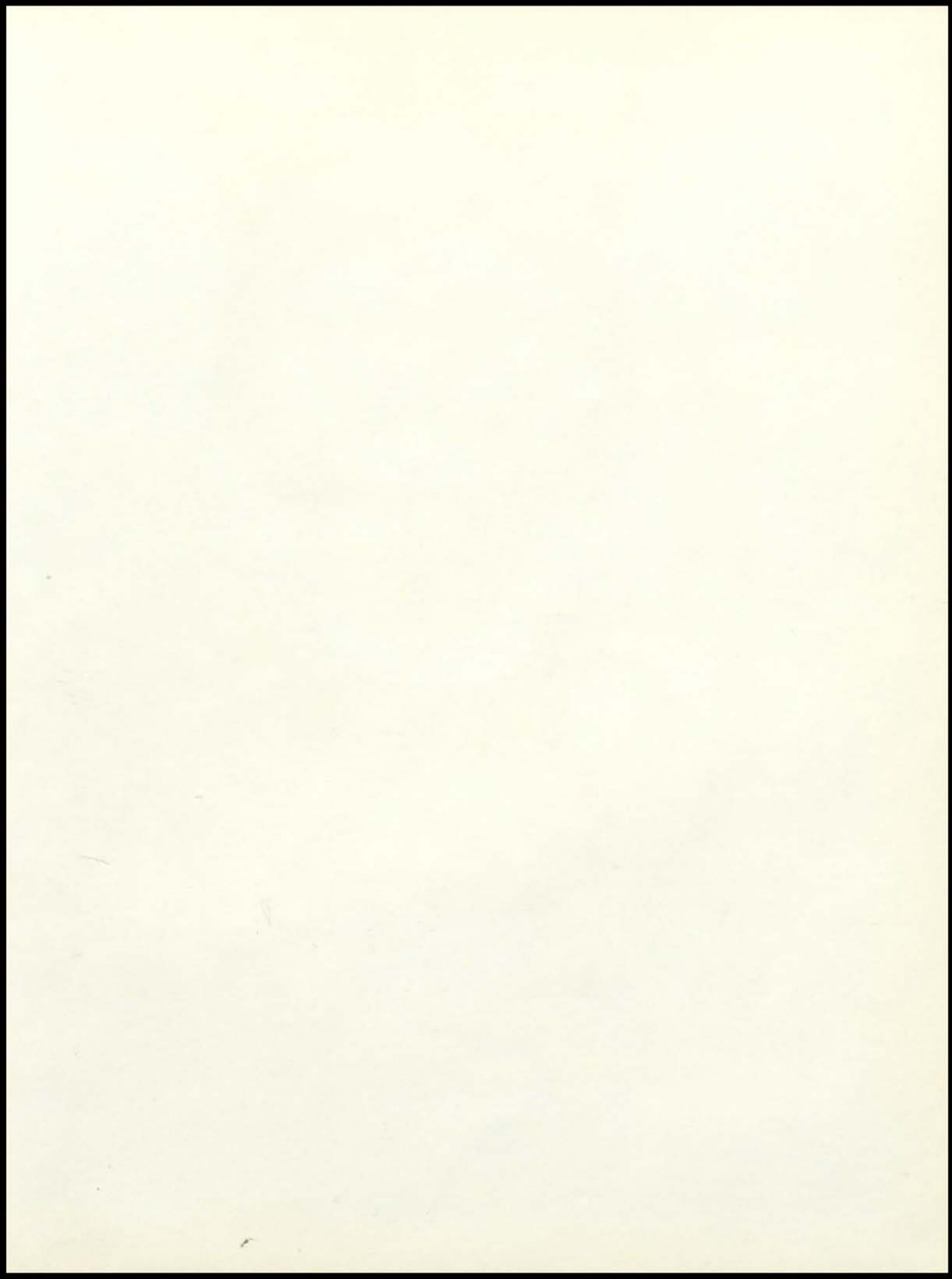
CENTER



63







Carol Trullin

20

Carol kidding
all you are
ready to
pretend to
forget year
good luck
Debbie
the food
clothes
summer!

TICKET

YELLOW

YEL

cket

YELLOW

ellowjacket

YELLOWJACKET

1963

Carol, its sure
been fun this
year showing
you take it easy
and keep it up??
Best of luck
You too!

Carol:
Well, all
Buddy -

you're a
too dis-
Good luck!
Don't
Becky

Good luck!
hope you
see
out
problems
Carol, been a
some of
years

Carol,
this year was
a real, hope
remain that way
Best of luck to a
darling girl with a
great personality.

John
Shankell
64

Carol, I
love you
and hope
you have
a great
year!
Love,
John
Shankell
64



TABLE OF CONTENTS

Foreword	3
Faculty and Administration	5
Classes	17
Organizations	65
Fine Arts	93
Activities	109
Sports	119



FOREWORD

It is not a question of how much we are to do, but of how it is to be done; it is not a question of doing more, but of doing better.

—Ruskin

Dear Carol,
It's been a
year of fun this
year in gym class.
You're a real sweet
gal. Lots of luck in the
future. See ya this summer.
Love,
Brad
Cox



Dear Brad,
I hope you are
having a great
summer. I miss
you and hope to
see you soon.
Love,
Carol

Dear Carol,
you are
a crazy
you're
miss

now
me
get
okay

broader
love,
"64"



**FACULTY AND
ADMINISTRATION**



R. E. Wright
District Treasurer and Accountant



Milton Garrison
Superintendent of Schools



R. E. Neale
Assistant Superintendent

Principals of Individual Schools



David L. Looney
Director of Guidance

Truman Thompson
Director of Education



Alma Elgin
Director of Food Service

Buford Ellis
Director of Audio Visual



Left to Right: Faivel Dunn, George Lehman, Kenneth West, President; George Ryder, Vice-President; James Lanoue, John McGovern.



Neelie H. Lyman
Secretary of Board and Bookkeeper



BUSINESS AFFAIRS



Preble Feeney
Accounts Receivable, Purchasing



Mary E. Hansen
Budget and Disbursements



Chas. W. Foraker
Director of Building and Grounds

OFFICE STAFF



Mr. Carl G. Fowler, Principal, shows Mr. Boyce D. Smith, Vice-Principal, some plans for the future.



Mrs. Carol Johnson demonstrates the use of office equipment for student assistants.



Office assistants receive instructions for the day's work from Mrs. Gustafson.

A typical day in the office.





Mr. Carl G. Fowler, *Principal*



Mr. Boyce D. Smith, *Assistant Principal*

FACULTY

ROBERT ADAMS — English II

"Slim"

Favorite Hobby — Golf. Activities — bowling, pool, pinochle, basketball, softball. Came to Center in 1962.

DORIS ALTIS — Commerce

"Fatsy"

Favorite Hobby — Reading. Activities — Listening to music, traveling. Came to Center in 1962.

DONALD BARASH — Mathematics

Favorite Hobby — Traveling. Activities — Water skiing, snow skiing, handball, all sports. Came to Center in 1961.



WAYNE BROWN — Social Studies, Debate

Favorite Hobby — Coaching debate. Activities — Swimming, reading. Came to Center in 1962.





WILLIAM BURK — Mathematics

Favorite Hobby — Reading. Activities — Fishing, sports, spectator of basketball. Came to Center in 1960.



ANNE BYLAND — Social Studies

Favorite Hobby — Knitting. Activities — Tennis, swimming. Came to Center in 1962.



CLARENCE COLEMAN — C.O.E.

Favorite Hobby — Fishing. Activities — Swimming, scouting. Came to Center in 1948.



JOYCE COX — Social Studies

Favorite Hobby — Ceramics. Activities — Travel, reading. Came to Center in 1962.



MARIE CUNNINGHAM — Library

"Mouse"

Favorite Hobby — Knitting. Activities — Reading, singing, traveling. Came to Center in 1948.



LESLIE DENTON — Commerce

"Mother"

Favorite Hobby — Stereo tape recordings, photography. Activities — Swimming, roller and ice skating, attending movies and concerts. Came to Center in 1957.



HERBERT GRAY — Science

Favorite Hobby — Midwest Missouri Archaeology. Activities — Attending major sports events. Came to Center in 1962.



SUE ROSE HARTER

Favorite Hobby — Collecting antiques. Activities — trips, hikes, study of wildlife, reading. Came to Center in 1961.

MAX HAYES — Physical Education

Favorite Hobby — Family. Activities — Tennis, golf, swimming, attending sports events, cycling. Came to Center in 1961.



EMERY HENLEY — Science, Mathematics

Favorite Hobby — Fishing. Activities — Golf. Came to Center in 1960.

"Jurtle"

CHARLES HENRY — Commerce

Favorite Hobby — Spanish. Activities — Traveling, reading. Came to Center in 1962.



JOYCE HENRY — Guidance Secretary

Favorite Hobby — Picture and story scrapbook. Activities — Bowling. Came to Center in 1961.

WILLARD HIRSCH — Instrumental Music

Favorite Hobby — Reading. Came to Center in 1959.



REVA HOLMAN — Counselor

Favorite Hobby — Dancing. Activities — Water skiing, tennis, golf, bowling. Came to Center in 1961.

TED HOLMES — Drivers' Education, History

Favorite Hobby — Stamp collecting. Activities — gun, bow and arrow hunting. Came to Center in 1962.



SUE HOLT — Physical Education

Favorite Hobbies — Knitting, sewing. Activities — Swimming, tennis, water skiing, ice skating, trampoline, volleyball. Came to Center in 1961.

"Froggy"



JACOB KNOPPS — Mathematics

Activities — Baseball, skating. Came to Center in 1962.



JEAN KOSTE — Art

Favorite Hobby — Figure skating, bridge. Activities — Bowling, swimming, travel. Came to Center in 1960.



ROBERT L. KREKEL — Social Studies

Favorite Hobbies — Reading. Activities — Tennis, boating, hunting. Came to Center in 1962.



DOROTHY KULLMAN — Commerce

Activities — Camping, traveling, hiking, music. Came to Center in 1962.



LUANNE LASSWELL — English

Favorite Hobby — Photography. Activities — Swimming, fishing, reading, writing. Came to Center in 1962.



CHARLES MADER — Counselor

Favorite Hobby — Reading. Activities — Music, volleyball. Came to Center in 1962.



JACK OVERBEY — Vocal Music

Activities — Rose gardening. Came to Center in 1957.



LUCY JEAN REMPLE — Art

Favorite Hobby — Painting. Activities — Swimming, camping, canoeing, reading. Came to Center in 1961.

LORENE ROLLER — English, Latin

Favorite Hobby — Growing roses, shooting skeet. Activities — Walking, reading, painting old trunks, lawn culture. Came to Center in 1954.



DALE E. SCHATZ — Social Studies

Favorite Hobby — Hunting, reading. Activities — Weightlifting, baseball, softball, swimming, tennis. Came to Center in 1962.

WILLIAM SCOTT — Spanish

Señor

Favorite Hobby — Archaeology. Activities — Travel. Came to Center in 1957.



LOUIS SELVEY — French

"Pesty"

Favorite Hobby — Listening to classical music. Activities — Ice skating (figure), reading. Came to Center in 1959.

VIRGINIA SMALLWOOD — Home Economics

Favorite Hobby — Sewing. Activities — Reading, dancing, listening to music. Came to Center in 1961.



ROBERT SMITH — Physical Education

Favorite Hobby — Coin collecting. Activities — Golf, swimming. Came to Center in 1961.

EDWIN STEINER — Science

Activities — Swimming, working around house. Came to Center in 1959.



THOMAS STOW — English, Publications

Favorite Hobby — Writing. Activities — Trout fishing, swimming, traveling. Came to Center in 1955.



WINIFRED SUTOR — Physical Education

Favorite Hobby — Needlework. Activities — Horse back riding, gardening, photography. Came to Center in 1946. "Spinnie the Poo"

JOANN THOMPSON — English

Favorite Hobby — Collecting records. Activities — Reading, working with Ceramics, swimming, traveling. Came to Center in 1959.



DUANE UNRUH — Physical Education

Favorite Hobby — Wood carving. Activities — Swimming. Came to Center in 1961.

MACKEY WILCOXON — Industrial Arts

Favorite Hobbies — Leather carving, photography. Activities — Fishing, camping, hunting, travel. Came to Center in 1956.



E. J. WILLS — Drivers' Education

Favorite Hobby — Boating. Activities — Camping. Came to Center in 1948.

C
U
S
T
O
D
I
A
N
S



Mr. John Miller



Mr. Elijah Gibbs, *Head Custodian*



Mr. Charles Schore



Mr. Earl Nelson

**CAFETERIA
STAFF**



Mrs. Clara Kienberger, Mrs. Helen Merritt, Mrs. Monnia Gibbs, Mrs. Johnny Mae Snider, Mrs. Theresa Falcone, Mrs. Ruby Perkins, Mrs. Ethel Chestnut, Mrs. Ethel McGrady, Mrs. Florence Miller.

and, Burns! (h h)

well, we've had a not the year we deserve and
I hope we'll have as much fun next year! Thank you
for your great book "mabae" when I had out to be chun-
leaving? I needed something like that. all the luck
in the world is everything you encounter! I've fun
the summer was the good!

" " " Supplement stuff
Diane Foster
69-63





CLASSES



SENIORS

Larry Druen is in the driver's seat for the fifth year in a row, as he was unanimously elected President of the Senior Class. Next to him is Bill Minshall, Treasurer. In the back seat are Susan Mace, popular foreign exchange student and Vice-President with Harriet Youle, Secretary. Not pictured is Gary Ernst, member-at-large.



Zsuzsi Adler

Spanish Club 10, 11, 12; Pep Club 10; Y-Teens 10

Bart Albright

Band 10, 11, 12; Choir 12; Spanish Club 11, 12; Football 10, 11, 12; Basketball 11, 12; Track 10, 11, 12; "C" Club 11, 12; Jamboree 12



Sandy S. Allen

French Club 10, 11; Choir 12; F.B.L.A. 12, Officer 12; National Honor Society 11, 12; 100 Girls' 11, 12; Glee Club 11, 12; Perfect Attendance 10

Wanda Anders

Pep Club 10; Spanish Club 10; Student Council 11; Librarian 11; Girls' Glee 10, 12; Choir 12; Jamboree 12; District Music Contest 12



Jane Anderson

F.T.A. 10, 11; Home Economics Club 11, 12, Officer 12; Christmas Concert 11, 12; Glee Club 11, 12; Choir 12; Jamboree 12

Kathy Axon

F.T.A. 10; Spanish Club 10; Band 10, 11, 12; Marching Band 10, 11, 12; Pep Band 10, 11; Pep Club 10, 11; Glee Club 12; Office Assistant 12; Shorthand Award 11

Fran A. Baker

Jamboree 10, 11, 12; Christmas Vespers 11, 12; Spanish Club 10; G.A.A. 10, 11, 12; F.T.A. 10, 12; Girls' Glee 10; Choir 11, 12; Pep Club 10; Spring Music Festival 10, 11, 12; Y-Teens 10

Sharon Ann Baker

Girls' Glee 10, 11, 12; Choir 12





George Ballew

Choir 11, 12; Track 10, 11, 12; "C" Club 11, 12; Glee Club 10, 11, 12; Jamboree 10, 11, 12; Choir Vice-President 12

Leslie Barnes

Glee Club 10, 11, 12; Choir 11, 12; Spanish Club 10, 11, 12; F.T.A. 10, 11, 12; Officer 11; Y-Teens 10; Girls' Sextet 11, 12; Jamboree 10, 11, 12; Christmas Concert 10, 11, 12; Spring Concert 10, 11, 12; F.B.L.A. 12; Officer (Vice-President) 12; G.A.A. 10

Bernard Richard Barsky

Student Council 12; Yellowjacket Staff, Managing Editor 12; Dramatics 11, 12; First Place Oratory, Suburban Conference 11; Superior Rating, Oratory District Contest 11; Debate Club 10; Latin Club 10, 11; Science Club 10; Creative Writing Club 11

Barbara Bass

French Club 12; Searchlight Staff 12



Terry L. Beach

Glee Club 10, 11, 12; Choir 12; Dramatics Club 12; Fall Play 12; National Honor Society 11, 12; Musical 12; Jamboree 12; Boys' Double Quartet 12; Spring Play 12; Christmas Concert 10, 11, 12; Special Boys' Glee 12

Terry Berlekamp

Industrial Arts Club 11, 12; Stage Crew 10, 11, 12



John Biggs

Choir 11, 12; Jamboree 11, 12; Spanish Club 10, 11, 12; Basketball 10, 11, 12; Musical Comedy 11, 12; Glee Club 10, 11, 12; Music Contest 10, 11, 12; Special Boys' Glee 12

Tom Birdwell

Spanish Club 11, 12; Glee Club 12

Mike E. Blackmon
Band 11, 12

Nata Blum
Latin Club 10, 11; Girls' Glee Club 11, 12; Searchlight 12



Ronald Bonne
Band 10, 11, 12; Danceband 10, 11, 12

Dan Brown
Industrial Arts Club 10, 11, Officer 11



Kendra Browning
Y-Teens 12; Stage Crew 12; Student Council 12

Thomas E. Burke
While at De La Salle — Football 10; Basketball 10
While at Hogan — Basketball 11

Rachelle Marie Butler
C.O.E. 11, 12; Girls' Glee Club 11, 12; G.A.A. 10

Peggy Cade
Pep Club 10, 11; French Club 11, 12; Home Economics Club 11, 12





Charles W. Callis

Fall Play 12; Glee Club 12; Golf Team 12; Stage Crew 12; Dramatics 12; Art Club 12

Diana Campbell

Pep Club 11; Spanish Club 11; Art Club 12; Glee Club 12

Vickie D. Christensen

Y-Teens 10, 11, 12, Officer 11, 12; Spanish Club 10, 11, 12, Officer 11, 12; National Honor Society 11, 12, Officer 12; Art Club 10, Officer 10; Varsity Cheerleader 11, 12, Captain 12; F.B.L.A. 12, Officer 12; Homecoming Attendant 12; Pep Club 10, 11, 12, Perfect Attendance 10; Student Council 12; Yearbook Staff 12; Quill and Scroll 12

Sherrie Sue Clark

Y-Teens 10, 11, Officer 11; F.T.A. 10, 11, Officer 11; F.B.L.A. 12; Pep Club 10, 11; French Club 11



Sid Clark

Basketball 10; Spanish Club 11; Marching Band 10, 11, 12; Concert Band 10, 11, 12

Dave Coleman

Football 10, 11, 12; Track 10, 11, 12; Spanish Club 11, 12; Student Council 10, 11; C-Club 11, 12; Choir 12; Glee Club 12



Don S. Coleman

Football 10, 11, 12; Track 10, 11, 12; Spanish Club 11, 12; C-Club 11, 12; Searchlight Staff 12

Terry Collins

Dana Cooper

Y-Teens 10; Spanish Club 10; French Club 12; F.B.L.A. 12; Girls' Glee Club 10, 11, 12

Jim Craig

Fall Play 12, Spanish Club 10, 11, 12; Football 10, 11; Track 10; Boys' Glee Club 10, 12; "C" Club 11; Dramatics Club 12, Officer 12; Searchlight Staff 11



Carolyn Crail

Spanish Club 11, 12; Pep Club 12; F.T.A. 12; F.B.L.A. 12; Searchlight Staff 11, Associate Editor; Yellowjacket 12, Activities Editor 12; Quill and Scroll 11, 12

While at Westport — Pep Club 10; F.T.A. 10; Honor Society 10; Tri-Hi-Y 10, 11, 12

Betty Fern Criscuolo

Y-Teens 10, 11, 12; F.T.A. 10; Spanish Club 11, 12; National Honor Society 11, 12, Officer 12; Pep Club 10, 11, 12, Officer 12; Pep Club Perfect Attendance 10, 11, 12; State Art Contest 11; Glee Club 11, 12; Choir 12; Dramatics Club 12, Officer 12; Yellowjacket Staff 12; Fall Play 12; Spring Concert 11, 12; Christmas Concert 12; Quill and Scroll 12

Victoria S. Cummings

National Honor Society 11, 12; F.T.A. 10, 12; Science Club 10, 12; Debate Club 10; Chess Club 11, Officer 11

Linda Davin

Y-Teens 10; F.T.A. 11, 12; Pep Club 10; Latin Club 10, 11, Officer 11; Choir 12; Glee Club 10, 11; Magna Cum Laude 10; Cum Laude 11; Jamboree 12



Gordon Dawson

Spanish Club 11, 12; Chess Club 12

Ruth Dickson

Spanish Club 11, 12; Newspaper Staff 11; Drama Club 12; Pep Club 11





Diana L. Doolan

Art Club 10, 11, 12, Officer 11, 12; Jamboree 10, 11, 12; Choir 11, 12; Girls' Glee Club 10; Double Mixed Quartet 11; State Music Festival 11; G.A.A. 12; F.T.A. 12; French Club 11, 12; Artist of the Year 11, 12

Larry Druen

Latin Club 10; Dramatics Club 12; Choir 11, 12; Class Officer 10, 11, 12

Kenneth B. Dunlop

Latin Club 10; French Club 11, 12; Science Club 11; Year-book 12

Melissa Edgerton

Latin Club 10, Officer 10; French Club 11, 12; Pep Club 10, 11, 12, Officer 11, 12; Snowball Queen 11



Angela Chris Ellis

Homecoming Attendant 12; Varsity Cheerleader 11, 12; Student Council Secretary 12; Class Officer 10, 11; Spanish Club 11, 12, Officer 12; Y-Teens 10, 11, 12, Officer 12; F.T.A. 10; Pep Club 10, 11, 12, Perfect Attendance 10, 11, 12; Choir 11, 12; Girls' Glee Club 10, 11, 12; Jamboree 10, 11, 12; Musical 11; Spring Concert 10, 11, 12; Christmas Concert 10, 11, 12; Art Club 12

Lois M. Emerson

Librarian 10, 12; Girls' Glee Club 10



Gary Ernst

Science Club 10, 11, 12, Officer 11, 12; Latin Club 10, 11, 12, Officer 11, 12; French Club 11, 12, Officer 12; Band 10, 11, 12

Lynn Ferguson

Spanish Club 11; F.B.L.A. 12; Science Club 12

Muriel J. Frank

French Club 10, 11, 12; Drama Club 12; Choir 11, 12; Glee Club 10, 11, 12; Jamboree 10, 11, 12; Musical 11, 12

Conley Funk

"C" Club 10, 11, 12; Class Officer 10; Student Council 11, Officer 11; Dramatics Club 12; Debate Club 12; Latin Club 10; Choir 10, 11, 12



Tonya Gehrs

Pep Club 10, 11, 12; Perfect Attendance 10; Varsity Cheerleader 11, 12; Y-Teens 10, 11; F.T.A. 10, 11; Girls' Glee Club 11, 12; Choir 12, French Club 10, 11, 12; Jamboree 10, 11; Homecoming Attendant 11; Fall Play 11; G.A.A. 10; Christmas Concert 11, 12; Art Club 10; Spring Concert 12; First Place National Cheerleaders Camp 11, 12

Janice Geiger

Home Economics Club 12; Girls' Glee Club 12



Kerry Leigh Goldberg

Spanish Club 11, 12; F.T.A. 11, 12; National Honor Society 11, 12

While at Southwest — Veda Literary Society 10; Pep Club 10

Val Golden

G.A.A. 12, Officer 12; Glee Club 12

While at East — Y.F.C. Club 10

Michael Goldwasser

Band 10, 11; Spanish Club 10, 12; Student Council 12; Newspaper 11

Shari Gregg





Susan Gunderson
Girls' Glee 10, 12; Librarian 10, 12

Nancy Hackleman
Band 10; F.T.A. 10, 11; Pep Club 11; Glee Club 11; Searchlight Staff 12

Richard Benfield Hall

Science Fair Award 11, 12; Letter of Commendation, National Merit Scholarship Corporation 12; Cross Country 11, 12; French Club 10, 11; Future Teachers 10, 11; Science Club 11, 12; Debate Club 10; Track 10, 11, 12; Chess Club 11; "C" Club 12

Jerry Hamley

*While at Rockhurst — Band 10
 Football 11; Band 11, 12; Spanish Club 12*



James L. Henderson

Football 10; Spanish Club 10, 11; Glee Club 10, 11, 12; Track 10, 11; Stage Crew 11; C.O.E. 12

Ida Sue Hill

C.O.E. 12; Pep Club 10, 11; Glee Club 11; Y-Teens 10



Gloris Himelstein
Pep Club 10; Girls' Glee 11, 12

Byron D. Holcom
Boys' Glee Club 12

Robert L. Holder

Latin Club 10; Debate 12; Dramatics 11, 12; Speaking Events

George L. Hook

Boys' Glee Club 10, 12; French Club 10, 11; Creative Writing Club 10, 11



Janet Horosko

Pep Club 12; Glee Club 12

Linda Houk

Pep Club 10, 11; Glee Club 10, 11, 12; G.A.A. 10, Officer 10; Choir 11, 12; Jamboree 11; C.O.E. 12



Gene Houtz

Latin Club 10, 11, Officer 11; Choir 12; Glee Club 11, 12; Football 10; Jamboree 12; Christmas Concert 12

Richard D. Hoverstock

Football Manager 10, 11, 12; Basketball Manager 11, 12; Track Manager 10; "C" Club 10, 11, 12; Choir 11, 12; Boys' Double Quartet 11, 12; Band 10, 11, 12; Marching Band 10, 11, 12; Dance Band 10, 11, 12; Jamboree 11, 12; Spanish Club 11, 12; Musical Comedy (Band) 11, 12

George E. Howell

Spanish Club 10, 11, 12; Student Council 10, 12; Class Officer 11; Searchlight Staff 12; Spanish Club 10, 11, 12, Officer 12

Bob Hunsperger

"C" Club 10, 11, 12; Football 10, 11, 12; Track 10, 11, 12; Glee Club 10; Choir 11, 12





Jack W. Isley

Football 11, 12; Basketball 10, 11, 12; Track 10, 11, 12; "C" Club 10, 11, 12; French Club 10, 11, 12; Choir 11, 12; Boys' Glee 10, 11, 12; Searchlight Staff 11, 12; Editor-in-Chief 12; Student Council 11, 12, Officer 11; National Honor Society 11, 12; Spring Play 11; Drama Club 12; Special Boys' Glee 12; Double Quartet 11, 12; Quill and Scroll 11, 12

John R. Jones

Choir 10, 11, 12; Boys' Glee 10, 11, 12; Jamboree 10, 11, 12; Musical 11, 12; Drama Club 12; Soloist, State and District Music Contest 11, 12; Boys' Double Quartet 11, 12; Special Boys' Glee 12; Latin Club 11

Mary Jo Jones

C.O.E. 11, 12; Girls' Glee 10, 11; G.A.A. 11

John Jurgens



Sharon Ann Kaufman

Latin Club 11, 12

Sande Keilhack

Pep Club 10, 11, 12; Band 10, 11, 12, Student Director 11, Officer 12; Christmas Concert 12, District and State Music Contest 12; Jamboree 12; Dance Band 10, 11, 12; Searchlight Staff 12; "Musician of the Year" Award 11



Anna L. Kemp

Y-Teens 10, 12; Girls' Glee 11, 12; Home Living Club 11, 12; Librarian 12

Kathryn Ann Kienberger

G.A.A. 10; Student Council 10; Pep Club 10, 11, 12; Y-Teens 10, 11, 12, Officer 11, 12; Latin Club 10, 11, 12, Officer 10, 12; "B" Team Cheerleader 12; Magna Cum Laude 10; Cum Laude 11; Yearbook Staff 12; Choir 12; Girls' Glee 11, 12; Jamboree 12; Quill and Scroll 12; District Music Contest 12



Darlene F. King

Pep Club 10, 11, 12; Y-Teens 10, 12; Spanish Club 10, 11, 12; Band 10, 11, 12, Officer 11, 12; Choir 12; Music Contest 12; Christmas Concert 12; Jamboree 12; Searchlight Staff 12

Dianna R. Kinniard

Choir 12; Girls' Glee Club 10, 11, 12; Jamboree 10, 12



Kim Kirkpatrick

Pep Club 10, 11, 12; French Club 10, 11, Officer 10, 11; Art Club 10, Vice-President 10; Fall Play 12; Choir 12; Jamboree 12; F.T.A. 11, 12, Officer 12; Glee Club 11, 12; Christmas Concert 12; Official Poster Maker 12; Spring Concert 11, 12

Bob Krogsdale

Glee Club 11, 12; Latin Club 10; Football 12; Journalism 12; Boys' Glee Club Contest 11; Choir 12



Claude W. Lafler

French Club 10, 11; Newspaper 12

Kathleen Lane

F.T.A. 10; Y-Teens 10; French Club 10; G.A.A. 10; Pep Club 11; F.T.A. 11; Home Economics Club, Vice-President 11; Homeroom Representative 12

Leonard S. Lewis

Spanish Club 10, 11, 12

Janet Lindeman

Y-Teens 10, 11, 12; Spanish Club 10, 11; Pep Club 10, 11, 12; Choir 11, 12; Jamboree 10, 11, 12; G.A.A. 10; Christmas Concert 10, 11, 12





Joe Macdonald
French Club 12; Drama Club 12; Boys' Glee Club 12; Track 12

Susan D. Gama Mace
Foreign Exchange Student from Brazil, Rio Grande do Sue, Rio Grande

Earl D. Madison
Marching Band 10, 11, 12; Concert Band 10, 11, 12; Boy's Glee Club 11, 12

Kathy Maher
Girls' Glee Club 10, 11; Choir 11, 12; Spanish Club 10; Pep Club 10; Y-Teens 10; Spring Concert 10, 11, 12; Christmas Concert 10, 11, 12; Jamboree 10, 11, 12



Joe Mallory
Band 10, 11, 12; Boys' Glee Club 11, 12; Choir 12

Barbara Marchant



Judith Helen Martasin
National Honor Society 10, 11; F.B.L.A. 11
While at Paseo — Cynthians Literary Society 10

Joel S. Martin



Carl Mayfield

Football 10, 11, 12; "C" Club 10, 11, 12; Choir 12; Boys' Glee Club 10, 12; Track Manager 10, 11, 12; Jamboree 12; Christmas Concert 12; Spring Concert 12

Michael L. McAuley

Quill and Scroll 12; Science Club 11, 12, Officer 12; Science Fair Awards 10, 11, 12; Latin Club 10; Cum Laude 10; Searchlight Managing Editor 12, Photographer 12; Yellowjacket Sports Editor 12; Indoor Track 11; Boys' Glee Club 12; Spring Music Festival 12



Sharon Louise McInvale
Spanish Club 10, 11

Linda Lee McNeil
Home Economics Club 10; Fall Play 10



Berton N. Miller
Track 10, 11, 12; "C" Club 11, 12; Searchlight 12; Yearbook Photographer 12; Student Council 12

Jonna Miller
Spring Concert 12; Girls' Glee Club 11, 12; Choir 12; Christmas Concert 12; Pep Club 10, 11, 12; Y-Teens 10, 11, 12; Home Economics Club 10, 11, 12; G.A.A. 10; Art Club 12; F.T.A. 12

Sharon Miller

Pep Club 10, 11; Girls' Glee Club 10, 11, 12; Choir 11, 12; Y-Teens 11; F.T.A. 10; Christmas Concert 12; Snowball Candidate 11; Music Contest 10, 11, 12

Larry D. Minor

Spanish Club 11; Basketball 10, 12; State Music Contest, Solo 10, 11, 12; District Music Contest, Solo 10, 11, 12; Double Quartet 11, 12.





Bill Minshall

Football 10, 11, 12; Basketball 10, 11, 12; Track 10, 11, 12; Choir 12; "C" Club 10, 11, 12; Latin Club 10, 11; Student Council 12; Class Officer 10, 12; Band 10, 11; Special Boys' Glee 12

Raymond M. Moot

Debate 10; French Club 11, 12; Science Club 11, 12, Officer 12; Track 10, 11, 12; Football 10

John A. Munns

Basketball 10, 11, 12; Science Fair Awards 10, 11, 12; Science Club 10, 11, Officer 12; Quill and Scroll 12; Yellowjacket Staff 12; Spanish Club 11, 12; Student Council 10

Tom M. Nee

Latin Club 10, 11; Dramatics Club 12; Jamboree 11



Russell Nesseth

Latin Club 10, 11; Choir 11, 12; Boys' Glee 11, 12; Jamboree 10, 11, 12; School Organist 11, 12

William J. Noonan

Industrial Arts Club 10, 11, 12, Officer 10, 11, 12



Pam Olivero

Y-Teens 10, 11, 12; Pep Club 10, 11, 12; Girls' Glee 10, 11, 12; Choir 11, 12; F.T.A. 10; Jamboree 10, 11, 12; Christmas Concert 10, 11, 12; French Club 10, 11, 12; Music Contest 10, 11, 12

Gary Richard Orren

National Honor Society 11, 12; Foreign Exchange Student Semi-Finalist 11; Student Council 10, 11, 12; Debate Club 10, 12; Latin Club 10, 11; Magna Cum Laude 10; Cum Laude 11; Science Club 11, 12; Creative Writing Club 11; Science Fair Award 11; Missouri University Summer Program for Superior Students 12; Boys' Glee 11



Mike Petersen
Choir 12

David O. Peterson
*Latin Club 10, 11; Marching Band 11, 12; Concert Band 11, 12;
Stage Band 11; Science Club 12; Yellowjacket Staff 12;
Student Council 12; Quill and Scroll 12*



Fred J. Phares
Spanish Club 11, 12; Class Officer 11

Chester Phelps
*Boys' Glee 10, 11, 12; Choir 10, 11, 12; Stage Crew 10, 11, 12;
F.B.L.A. 12; Spring Concert 11, 12; Christmas Concert 10, 11,
12; Special Boys' Glee 12*



Janice Phillippe
*Y-Teens 10, Choir 11, 12; Jamboree 10, 11, 12; Girls' Glee 10,
11, 12; Pep Club 10, C.O.E. 12*

George Polkinghorn
*Dramatics Club 10, 11, 12, Officer 12; Stage Crew 10, 11, 12,
Officer 10, 12; Boys' Glee 10, 11, 12; Choir 11, 12; Spring Play
10, 11, Student Director 11; Fall Play 10, 11, 12; Starlight
Student Advisory Board 11, 12*

Lawrence W. Pummill
*Track 10, 11, 12; "C" Club 12; Cross Country 11, 12; Boys'
Glee 10, 11*

Dan Rankin
*Football 10, 11, 12; Track 10, 11, 12; Basketball 10, 11, 12;
"C" Club 11, 12; Choir 11, 12; Small Ensembles 11, 12; Spanish
Club 11, 12; Class Officer 10; Student Council 12; Jamboree
10, 12; Musical 11; Christmas Concert 10, 11, 12; Boys' Glee
10, 11, 12; State Track Meet 11, 12*





Joyce L. Rawdon

Pep Club 10; C.O.E. 12; Spanish Club 10; Art Club 10; F.T.A. 10; Home Economics Club 10

Joyce B. Reckart

F.T.A. 10, 11, 12, Letter 10, 11; Pep Club 10, 11, Letter 10, 11; Latin Club 10, 11; French Club 11, 12, Vice-President 12; Science Club 10, 12

Michele Elaine Relder

Choir 12; Spring Concert; Christmas Concert; Girls' Glee 11, 12; Jamboree 12

Carol Remington

Pep Club 10, 11, 12, Varsity Cheerleader 11, 12; Jamboree 10, 11, 12; Christmas Concert 10, 11, 12; Y-Teens 10, 11; G.A.A. 10; Musical Play 11, 12; F.B.L.A. 12; Spanish Club 10; District Concert 11, 12; State Contest 11, 12; Choir 11, 12; Glee Club 10, 11, 12; Perfect Attendance Record in Pep Club 10; First Place National Cheerleaders' Camp 11, 12; Spring Concert 10, 11, 12; Art Club 10



John Renick

Student Council 10, President 12; Latin Club 10, 11, 12, Officer 10; Newspaper Editor 11; Quill and Scroll 11; Choir 12; Boys' Glee 12; Jamboree 12; Christmas Concert; Spring Concert

Joyce Kay Rohner

F.T.A. 11; Girls' Glee 11; F.B.L.A. 12



Richard I. Rosen

French Club 10, 11; Debate Club 10, 11, 12, Letter 11, N.F.L. 10, 11, 12; Science Club 10, 11, 12, Letter 10, 11, Science Fair 10, 11; Special Awards 10, 11; District Debate Contest 11

Barbara Rosenberg

Jamboree 10; Girls' Glee Club 11, 12; Spring Concert 11, Pep Club 10, 11, 12; Y-Teens 10, 12; F.T.A. 10; Searchlight Staff 12; Spring Play 10, 11; Fall Play 11; National Forensic Club Officer 12; Quill and Scroll 12; Thespians 11, 12; Student Council 11; District Dramatics Contest 10, 11, 12

Frank W. Ross

Choir 10, 11, 12; Special Boys' Glee 12; Boys' Quartet 11, 12; Boys' Double Quartet 11, 12; Madrigal 10, Soloist 11, 12; Mixed Double Quartet 11; Latin Club 10, 11; Officer 11; Cum Laude 10, 11; National Honor Society 11, 12; Boys' Glee Club 10, 11, 12; Quill and Scroll 12; Searchlight Staff 12, Sports Editor, and Photographer; Yearbook Staff 12, Editor-in-Chief; Fall Play 11; Musical 11, 12; Jamboree 10, 11, 12; District Musical Festival 10, 11, 12; State Music Festival 11, 12; Christmas Concert 10, 11, 12; Spring Concert 11, 12

Charles Salamano

Latin Club 10; Spanish Club 11; Track 10, 11



Steve Sanders

Choir 10, 11, 12; Glee Club 10, 11, 12; Football 12; Jamboree 10, 11, 12; Christmas Concert 10, 11, 12; Spring Concert 10, 11, 12; Glee Club 12

Leland B. Schroeder

Band 10; Glee Club 10; Choir 11



Susanne Schroeder

G.A.A. 10; Y-Teens 10, 11; Pep Club 10, 11, 12; Searchlight Staff 11; Quill and Scroll 11; F.B.L.A. 12; Student Council Representative 11; Girls' Glee 12

Donna Schupp

Debate Club 10, 11, 12, Officer 11, 12; Drama Club 12; Latin Club 10, 11; Pep Club 10, 11, 12; Y-Teens 11, 12, Officer 12

Cindy L. Scott

While at School of the Osage — Pep Club 10; F.H.A. 10; G.A.A. 10

Peggy Seo

Latin Club 10, 11, Officer 11; Y-Teens 11, 12; Pep Club 11, 12





Sandie Shapiro

Pep Club 10, 11, 12; Spanish Club 10, 11, 12; "B" Team Cheerleader 11, Captain 12; Choir 11, 12; Jamboree 11, 12; Glee Club 10, 12; Sextet 11, 12; Music Contest 10, 11, 12; Spring Concert 11, 12; Christmas Concert 11, 12

Martha J. Sharp

Pep Club 10, 11; Y-Teens 10; Choir 12; F.B.L.A. 12; Glee Club 10, 11, 12

Judith Siemon

G.A.A. 10; Spanish Club 10, 11, 12; Searchlight Staff 12

Gary L. Sloan

Spanish Club 11, 12; Basketball 11; Student Council Representative 12

While at Rockhurst — Baseball 10; Stage Crew 10



Phillis Sloan

Pep Club 10, 11, 12; Y-Teens 10; Jamboree 10, 11, 12; Drama Club 12, Officer 12; Spring Concert 11; Choir 11, 12; Glee Club 10, 11, 12; G.A.A. 11; Christmas Concert 10, 11, 12; Music Contest 10, 11, 12

Daniel R. Smelser

National Honor Society 11, 12; Choir 11, 12, Officer 12; Jamboree 11, 12; French Club 11, 12; Band 11, 12; Stage Band 11; Special Boys' Glee 12; Boys' Glee 12



Norma Smith

Susan Steele

Girls' Glee Club 10, 11; Stage Crew 10; Librarian 10, 12

Marilyn Stevens

Pep Club 10, 11, 12; Y-Teens 10, 11, 12, Officer 12; "B" Team Cheerleader 11, Varsity Cheerleader 12; Choir 12; Spanish Club 10, 11, 12, Officer 12; F.B.L.A. 12; G.A.A. 10, 11; Cheerleading Camp 12; Perfect Attendance in Pep Club 11

Paulette Marie Stevens

Latin Club 11, Officer 11; G.A.A. 10; Art Club 10; Perfect Attendance 10; Pep Club 10, 11, 12, Officer 11, 12, Perfect Attendance 10; Y-Teens 10, 11, 12, Officer 11, President 12; Y-Teen of the Year 11; Girls' Glee 10, 11, 12; Choir 12; Jamboree 12; Yearbook Staff 12; Quill and Scroll 12; Christmas Concert 12; Spring Concert 12



Beth J. Stolov

Spanish Club 11, 12; Girls' Glee 10, 11, 12; Dramatics Club 12; Jamboree 11, 12; Choir 11, 12

Patricia M. Stone

Latin Club 10; French Club 11, 12, Officer 12; F.T.A. 10, 11, 12, Officer 12; Searchlight Staff 12; Girls' Glee 12



Joe Sturgess

Track 10, 11, 12; Debate Club 11; Choir 12; Boys' Glee Club 12; Stage Crew 11, 12; Dramatics 12; Fall Play 12; Football 12; Spanish Club 11, 12; Jamboree 12; Spring Play 12; Christmas Concert 12; Spring Concert 12

Judith L. Summerskill

John Teakell

Sue Thompson

Pep Club 10, 11, 12, Officer 12; Latin Club 10, 11, 12, Officer 10, 11, 12; National Honor Society 11, 12, Officer 12; Debate Club 12; Y-Teens 12; Girls' Glee Club 11





John Thornbrugh

Latin Club 10, 11; Track 11; Glee Club 11, 12; Yearbook Staff 12

Ed Tiemann

French Club 11, 12; Boys' Glee Club 10, 11, 12; Boys' Double Quartet 11, 12; Choir 11, 12; Christmas Concert 10, 11, 12; Jamboree 11, 12; Fall Play 10; Spring Concert 11, 12; Boys' Quartet 12; Special Boys' Glee

Renate Till

Pep Club 10, 11; G.A.A. 10, 11, Officer 11; French Club 10; Glee Club 12

Ursula Till

Pep Club 10, 11; French Club 10, 11; G.A.A. 10, 11, Officer 11; Glee Club 11, 12



Patricia M. Vittorino

Glee Club 12; Home Economics Club 12

Juanita J. Wallo

Y-Teens 10; Spanish Club 10, 11; Pep Club 10, 11, 12; F.B.L.A. 12



Barbara Warren

Yearbook Staff 12; Searchlight Staff 12; F.T.A. 11, 12; Y-Teens 11; Spanish Club 11; 100 Girls' Club 11, 12; American Field Service Semi-Finalist 11

While at Southwest — Spanish Club 10; Art Club 10; Y-Teens 10; Pep Club 10; Sappho Literary Society 10

Barbara M. Weed

Homecoming Attendant 12; Snow Ball Attendant 11; F.B.L.A. 12; Pep Club 10, 11, 12; Spanish Club 10; Y-Teens 10, 12

Barbara Harriet Weinberg

*Pep Club 10, 11; Spanish Club 10, 11; Searchlight Staff 12;
Glee Club 11, 12*

Tom Welterman

*Football 10, 11, 12; Track 10; Spanish Club 11; Choir 11, 12;
Boys' Glee Club 10, 11, 12; "C" Club 11, 12*



Karen E. Westring

*Pep Club 10, 11; G.A.A. 10, 11, Officer 11; Latin Club 10, 11;
"100 Girls" 11, 12; Girls' Glee Club 11, 12*

Rosellen C. Wheeler

Pep Club 10, 11; French Club 11, 12; F.T.A. 10



Marsha D. Wiebold

*Pep Club 10, 11; Librarian 11, 12; Jamboree 10, 11, 12;
Spanish Club 10*

Harold Wimp

Glen Yager

*Track 10, 11, 12; Boys' Glee Club 10, 11, 12; Choir 11, 12;
Spanish Club 11*

Harriet L. Youle

*Pep Club 10, 11, 12; French Club 11, 12; Latin Club 10; "100
Girls" 10, 11, 12; National Honor Society 11, 12, Officer 12;
Yearbook Staff, Editor 12; Class Officer 10, 11, 12*





Robert R. Youngs
C.O.E. 12; Boys' Glee Club 11, 12

Late Pictures

Joyce Brening
Griffin Caldwell
Spanish Club 11, 12



Edna Delaney
Carol Dudley



Randy L. Forbis
Searchlight Staff 12

Rosario V. Gramajo
Girls' Glee Club 12

Wayne Huber

Football 10, 11, 12; Choir 10, 11, 12; Boys Glee Club 10

John L. Latta

Boys Glee Club 12; Band 10



Pat Mankin

Diane McNeil

Library 11, 12; C.O.E. 12.



Sandra Kay Nash

Drama Club 12; Glee Club 12. While at Shawnee Mission East: Drama Club 10, 11; Glee Club 10, 11

Robert W. Norris

Boys Glee Club 10, 11, 12; Industrial Arts Club 10, 11

James Schraml

C.O.E. 11, 12; Choir 11; Boys Glee Club 10, 11, 12

Judith A. Smith

Jamboree 10, 11, 12; G.A.A. 11, 12; Girls Glee Club 10, 11, 12; Choir 11, 12; Pep Club 10; Spring Music Festival 10, 11, 12; Christmas Concert 11, 12





Robert Smith
Robert Weislocker

*Carol,
you're one of the
greatest guys I
know. You're so
awesome. We'll
always be your
friends. Good Luck
Linda*



Don Zwarts
C.O.E. 12.

Not Pictured

Randall J. Goodman
Track 12.

Jerry Greenstein
Debate Club 10, 11, 12, Officer 11, 12; Drama Club 10; Fall
Play 11

Aaron Maissell
Darold True



JUNIORS

The Junior Class officers are (top) Wayne Hines, President; John Bondon, Vice-President; (bottom) Sandy Stevens, Secretary; and Carol Miller, Treasurer.



We sure did have a lot of fun this year in Spanish when we sat next to each other. Hope I see you this summer.

Love, Sue Johnny



Ricky Abernathy
Betty Allen

Floyd Anderson
Betty Barrack
Craig Barry



Bill Baskin
Steve Bates

Bobbie Sue Baellow
Vernon Bailey
David Barber



Laverne Bean
Ross Beavin

Kathy Berkey
Judy Bell
Gary Berbiglia



George Bingham
Margaret Birge

Leona Boeger
John Boles
John Bondon



Don Boswell
Danny Bowers

Barbara Boyd
Shiela Bradford
Sharon Bray



Barry Bredehoeft
Larry Bredehoeft

Linda Bremer
Linda Brening
Britton Brown



Robert Brown
Carolyn Brownlee

Shari Dee Bruno
Sharle Lee Bruno
Cheryl Bullard





Mike Bungarner
Phyllis Burkholder
Joyce Burgen
Pat Campbell
Linda Cannon



Deirdre Carmody
Duane Carpenter
Linda Carter
Peter Cartwright
Steve Casterline



Michelle Cation
Billy Caulfield
Don Christman
Debbie Clark
Kathy Clayton



Tom Collins
Greg Compton
Todd Conklin
Sharon Conrad
Linda Corbin



Dave Cowden
Shirley Cox
Blair Curtis
Bob Dailey
Ken Daumas



Brenda Dearduff
Carolyn Denny
Steve DeVorss
Laurie Dicus
David Doty



Janice Dresnick
Sol Dubin
Carol Duff
Sharon Dugan
Sandy Eades





Larry Ebner
Ed Fellhauer
Ginger Ferguson
Lanny Fields
Mike Finucan



Sharon Flickinger
Eric Flink
Bill Frey
Brooks Fuller
Jan Furr



Terry Garrison
Carolyn Gervais
Georgia Gibbons
Miriam Goldwasser
Jan Golub



Becky Good
Jon Goodnight
Judy Gordon
Barbara Greenbaum
Martha Greene



Fran Gross
Arthur Hale
Bill Hall
Roger Hall
Ruth Hall



Katsy Hamilton
Pat Hamlin
Terry Hammond
Ken Hankins
Benny Harding



Gwen Harleman
Rita Harris
Tom Hastings
Shirley Haughenberry
Ron Hayatt





JoAnne Hedges
Broods Herndon
Richard Hileman
Larry Himmelstein
Harry Himmelstein



Wayne Hines
Willy Hoebel
Tom Holcom
May Belle Horn
John Houtz



Ronnie Huber
L. J. Hughes
Garret Hunsburger
David Hunter
Simon Igielnik



Brenda Jacobson
Jimmy Jemison
Rosemary Jensen
Ginger Johnson
Karen Johnson



Ronnie Judd
Alan Katzberg
Judi Kean
Gary Kelley
Mike Kelley



Linda Keltner
Sharon Kemmerer
Jim King
Richard King
Cynthia Koshko



Steve Kreis
Gary Kretchmer
Kathy Kruger
George Lacy
Sandy Land





Jamie Lanoue
Linda Lautwein
Deena Lawrence
Mike Layne
Arnie Lerner



Steve Levitch
Ricky Liber
Marshall Limpie
Cheryl Lincoln
Bill Lowe



Jack Mankin
Jeff Marks
Darlyne Martasin
Tanya Martin
John Masterson



Toby Mathews
Woody Mathis
Tom Matula
Pat McCarthy
Jeff McCormick



Jim McCraw
Bill McElhiney
Linda McGhee
David McMillan
Susan McMurtry



Maynard Melching
Leroy Mendenhall
Pat Merritt
Bob Messick
Candy Miles



Carol Miller
Dean Miller
Donna Miller
Gordon Miller
Suzanne Miller





Shirley Mooneyham
Kathy Moreland
Jim Morrison
Kay Morrow
Sue Myers



Jim Napp
Sharon Nash
Kathy Northington
Sandy Nylund
Harvey Oxman



John Payne
Dennis Pangborn
Suzette Parrick
Barbara Pasnik
Nancy Pendleton



LeRoy Perkins
Sherry Pettit
Sharon Podrasa
Tom Portman
Sue Ramsey



Joel Ray
Barbara Raynes
Roger Reese
Marcia Remis
Wendell Resco



Sandi Rice
Mike Ring
Joyce Robards
Russell Roberts
Sam Roberts



Wayne Robinett
Judy Robinson
Joe Rogers
Mike Ruane
Frances Russell





Linda Russell
Becky Ryan
Tom Ryan
Jack Sander
Ronnie Schauble



Mary Schranz
Charles Scofield
Bob Seal
Diana Sharp
Sue Shamrell



Pete Silverman
Alice Skivers
Kendra Sloan
Don Smith
Paul Smith



Don Snoddy
Judy Spitaufsky
Judy Steeps
Janie Steiner
Sandy Stevens



Ray Stewart
Rita Stottlemire
John Sumner
Sandy Talbot
Clyde Tarlton



Bill Taylor
Kip Taylor
Linda Taylor
Elaine Thistle
Marilyn Thomas



Pat Thompson
Bob Thornton
Carolyn Tooley
Carole Townsend
Mike Travis





Marie Tremaine
Donna Triozzi
Danny Tucker



Dennis Tull
Virginia Vandever



Butch Venable
Bob Viets
Garry Wackerhagen



Victor Wade
Mike Watling



Bobette Watson
Suzette Watson
Nancy Weaver



April West
Janet West



Bill Williams
Steve Williams
Raymond Willis
Doug Willis
Janet Willoughby



Pat Whisler
Carol Withrow
Gene Wright



Sandy Yockey
Karen York



Dean Yost
Gary Young
Rosella Zacher



Vicki Zumwalt
Don Drover



Susan Markowitz



SOPHOMORES

Sophomore Class officers are, left to right: Bruce Sloan, Vice-President; Stephanie Urdang, Secretary; and Karen Johnson, Treasurer. The President is Mike Rimel.



Joanne Abbott
 Erika Adler
 Mike Akers
 Mike Allan
 Barnett Alport
 Buddy Anders



Donna Anderson
 Kurt Anderson
 Linda Andreason
 Gary Armour
 Nancy Arnold
 Rebecca Arnold



Janice Ash
 Kathy Auld
 Steve Axon
 Danny Baird
 Dennis Baker
 Jeff Baker



Patricia Baldwin
 Tracy Ballantyne
 David Ballew
 Eugene Banahan
 Gary Barger
 Linda Barnes



Jimmie Barry
 Margaret Bates
 Barbara Bauer
 Irene Beach
 Virgil Beavin
 Richard Bellairs



Mike Bennett
 Joe Benson
 John Berkenwald
 Janice Berry
 Jim Biggs
 Jerry Bingham



Terry Blazona
 Jack Bliven
 Charles Blocker
 Harriet Blonsky
 Rick Boehringer
 Marilyn Bolling



Gary Bollinger
 Carol Borders
 Mike Bray
 Joanne Bredeman
 Mary Brennan
 Carol Brewer



Barbara Brimer
 Steve Brisley
 Cheryl Brown
 Mike Brown
 Celeste Buches
 Alan Buford



Mike Bureman
 Danny Burwell
 Carol Bussing
 Robert Butler
 Pat, Byrne
 Sandra Cable



Dennis Caffey
 Candy Caldwell
 Ken Callahan
 Terry Callis
 Drew Campbell
 Ronnie Campbell



Steve Campbell
 Sharon Canada
 Rita Cantrell
 John Carroll
 Les Casper
 Bill Catron



Mike Chambers
 Mike Churchill
 Jack Clark
 Sherie Clark
 Judy Cline
 Marcia Cohen



Bob Cohn
 Peggy Coleman
 Don Collins
 Danielle Comens
 Janet Cox
 Pat Crow





Jim Culbertson
 Roy Cummings
 Erika Dagerman
 Bob Davis
 Larry Davis
 Dick DeFries



Sharon Dewhurst
 Howard Dolginoff
 Gary DonCarlos
 Ruby Douglas
 Mickey Dressler
 Richard Drewry



Richard Dunbar
 Diane Dunlop
 Myra Dunn
 Cheryl Eades
 Linda Eickholz
 Linda Eikel



Dona Eimer
 Howard Eisberg
 Sherri Eltrich
 Pat Emmett
 Rino Fabrizi
 Marguerite Farabee



Barbara Finkle
 Kathleen Fischer
 Larry Fitzgerald
 Harvey Flaks
 Linda Fletcher
 Bill Flora



Tom Foraker
 Diana Forste
 Gene Fox
 Barry Franklin
 Tom Franklin
 Penny Fray



Sandra Frazier
 Cherrie Frey
 Lloyd Friedley
 Diane Funk
 Janet Gallas
 Homer Galloway



Judy Garlet
 Jan Garry
 Jim Gentile
 Relinda Gentile
 Bob Giese
 Barbara Gilbertson



Vicki Gist
 Barbara Gittleman
 Sandy Glennon
 Maizie Golden
 Joan Goldklang
 Rickey Goodman



Terry Goodman
 Jerry Goodwin
 Jim Goosetree
 Garry Gorrel
 John Gray
 Donna Grayson



Brian Greenstreet
 Marcia Greer
 Derek Greiner
 Shirley Gustafson
 Ann Hall
 Cherilyn Hamilton



William Handy
 Vickie Hanna
 Bob Harrison
 Darlene Hart
 Bobby Hartwig
 Pam Hatfield



Carl Heater
 Paul Heath
 Jean Heimbach
 Phyllis Heise
 Martha Heizer
 Bruce Helmich



Judy Henderson
 Bill Henry
 Den Henry
 Pat Henry
 Patty Herrill
 Charlie Hilbrant

Danny Hill
Terry Hock
Don Hodgins
Pat Hodson
Arnold Hoffman
Joanna Holder



Don Hook
Charles Hollingsworth
Sue Holmes
Richard Hough
Bob Housh
David Housh



June Howell
Richard Huber
Greg Huff
Sandy Hunt
Sandre Hurst
Dianna Hutson



Judi Izard
Pam Isaacson
Marilyn Jackman
Linda Jarsulic
Gary Jenkins
Jolene Jensen



Dan Johnsen
Karen Johnson
Linda Johnson
Stephanie Jones
John Jordan
Linda Juett



Joan Jurgeson
Sally Kahle
John Keith
Diane Kennedy
Dennis Kenney
Connie Kerr



Jim Kiefer
Richard Kier
Barbara Kirk
John Kittell
Mile Knenlein
Vincient Kosmiski



Jeff Kramsky
 Karen Krebbs
 Tonya Kroeker
 Sid Ladinsky
 Connie Lakey
 Betty Lane



Glenn Lane
 Ronnie Lamning
 Kenneth Lattimer
 Ellen Leonard
 Jim Lesky
 Jerry Levinson



Rita Levinson
 Dave Looney
 Brian Loos
 Robert Loucks
 Carol Ludwigs
 Carol Ludy



Viola Lumpkins
 Jerome Lynch
 Yvonne Lundahl
 Bill Lyman
 Kenneth Madison
 Glenn Mallott



Jim Maness
 Madona Marchant
 Alan Markowitz
 Sharon Marlin
 Vivian Mason
 Bob Masterson



Rick Martin
 Monte McCall
 Linda McCloud
 Debbie McComas
 Tim McCormick
 Tom McCormick



Velora McCoun
 Sharon McCoy
 Annette McGinnis
 Alan McHenry
 Jerald McHenry
 Glenn McIlwee





Jim McMurtry
 Mike McPheeters
 Greg Meise
 Charles Mercer
 Herry Metz
 Barbara Miller



Donna Miller
 Susie Miller
 Dean Minshall
 Marilyn Moot
 Randall Moots
 Ralph Morgan



David Morris
 Cindy Muller
 Stan Munns
 John Murphy
 Tony Murphy
 Greg Musselman



Richard Musser
 Andy Myers
 Janie Myers
 Steve Nathan
 Bob Meidig
 Michael Miebaum



Bobby Norman
 Denis O'Dell
 Martha Oliver
 Jerolyn Onstad
 Mike O'Shea
 Bill Osthoff



Pat Owensby
 Wilfred Palm
 Lee Parrish
 Garth Peck
 Paul Peterson
 Gary Petty



Gwen Phelps
 Nancy Pickett
 Joan Pierce
 Diane Potter
 Joe Pous
 Judy Prigel



Don Pummill
 Ronald Pummill
 Bill Pryor
 Judy Ragan
 Jo Anne Raskin
 John Ray



Bobbie Raw
 Peggy Ray
 Betty Reed
 Richard Reedy
 Charles Rice
 Steve Rickard



Nancy Ricker
 Marsha Rickett
 Tom Riddlebarger
 Mike Rimel
 Nancy Roark
 Marlin Roberts



Mike Roberts
 Morton Rock
 Jesse Rodriguez
 John Rodriguez
 Sharon Rogozenski
 Barbara Rollins



Dick Root
 Jeff Root
 Charlene Ross
 Linda Salamano
 Lena Sallaz
 Stanley Samborski



Sharon Saunders
 Patsy Sayre
 Beverly Scammahorn
 Herb Schmall
 Faith School
 Barbara Schultz



Carolyn Scott
 Don Scott
 Pam Scritchfield
 Larry Searcy
 Aleda Shaffer
 Rita Shane

Sharon Shelton
 Chuck Shewey
 John Shover
 Bob Simmon
 Gary Simmons
 Jack Skare



Bruce Sloan
 Steve Sloan
 Frank Smith
 Mike Smith
 Rita Smith
 Steve Smith



Rodney Sommers
 Phil Spears
 Kathy Spencer
 Stephen Stafford
 Bill Steele
 Alan Stempleman



Roger Stewart
 Mickey Stotler
 Bill Stout
 Robert Studna
 Bethel Stuby
 Cindy Suiter



Mark Swartz
 Danny Taylor
 Paula Taylor
 Karen Thornton
 Jim Tiscuer
 Bob Treasure



Carol Trillin
 Rodney True
 Ronny True
 Bill Tucker
 Jane Turpin
 Stephanie Urdang



Janice Underwood
 Russell Usneck
 Jim Valentine
 Pat Van Cleave
 Marilyn Van
 Compennolle
 Nancy Viets





Jim Wagner
Bob Walker
Connie Walker
John Weaver
Sandra Weiner
Stan Weiner



Phyllis Weinstein
Jim Wertz
Jerry Westbrook
Kent White
Don Wilkins
Nancy Willhite



David Willians
Jean Willians
Rick Williams
Ronnie Williams
Greg Wilson
Sheri Wing



Abe Wischnia
Betty Wise
Jeff Wisoff
Cliff Witherspoon
Karen Wonder
Cinda Wood



John Woodling
Kathleen Woods
Cindy Wyatt
Harold Youngblood
Dennis Younger
Bob Zeldin



Pam Zeldin

Not Pictured

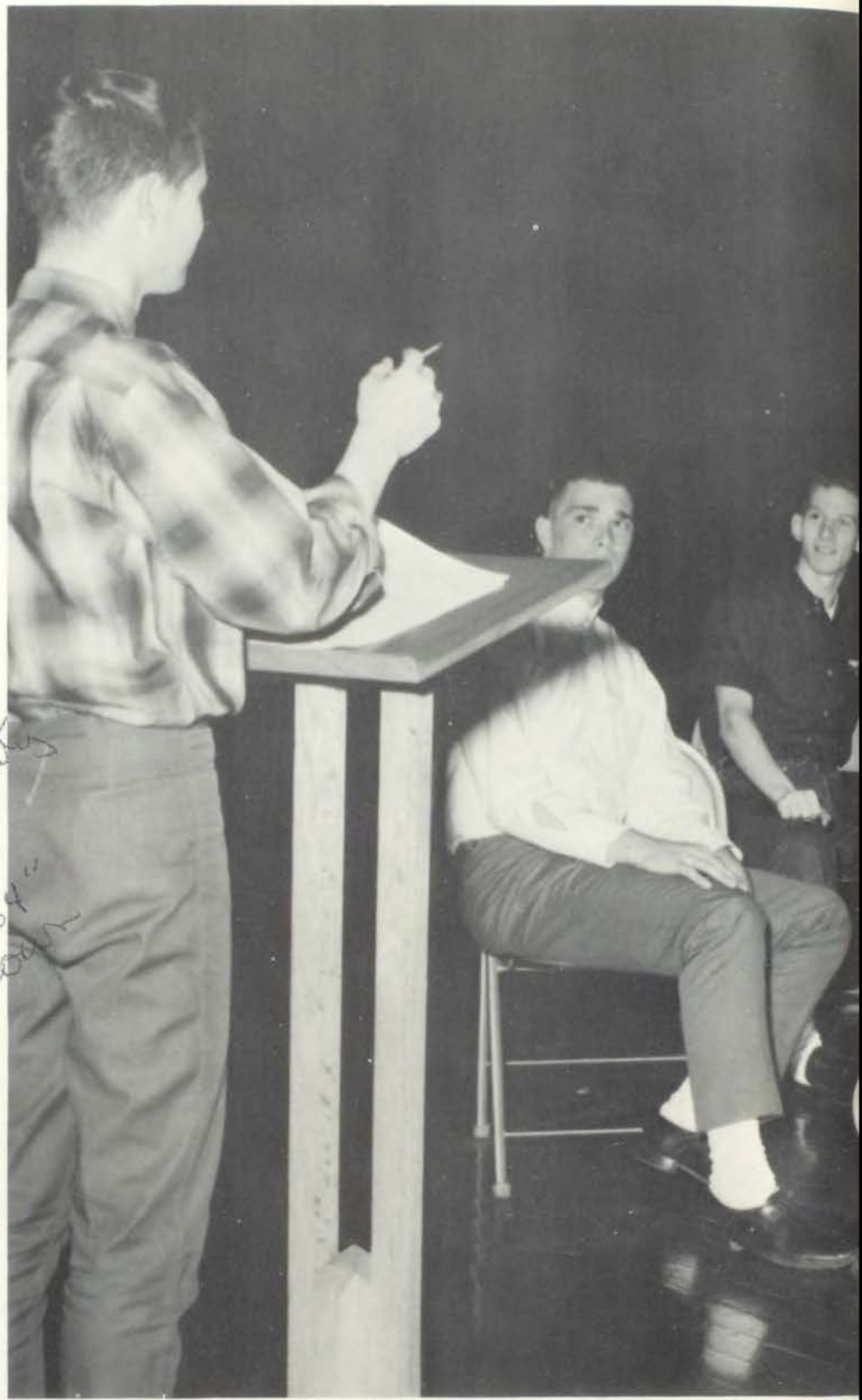
- Elizabeth Hill
- Carol McKenzie
- John Newton
- Janet Skaggs
- Linda Skivers
- Bill Wholey



Dad,
 Well another
 year has gone
 by and you
 will be a year
 older. I know you will
 have a big
 blast. Stay sweet
 and don't ever change.
 Your love to a real
 Dad,

I want to take you
 this time to wish you the very
 best of luck always. You are
 a great girl with a personality
 Best wishes always
 Britt "64"
 Britt

P.S. excuse
 the change of
 pen.





ORGANIZATIONS



F. T. A. officers discuss with Miss Roller plans for a coming club meeting.

The Future Teachers of America are just that—students interested in teaching as a career. Through this organization, interested students obtain a “taste” of teaching. They help faculty members and spend a day of practice teaching in their favorite classes. Aided by Miss Roller, sponsor, members of the F. T. A. strive to reach the high standards demanded by the teaching profession.

Members who were new to F.T.A. this year.



FUTURE TEACHERS



The F. T. A. and Y-Teens presented a check to Mercy Hospital at Christmas.



Another year means another gold seal for this nationally accredited association.

"Old Timers"





Row One: P. Heise, S. Miller, C. Denny, S. Keilhack, M. Stevens, J. Lindeman, B. Weed, B. Criscuolo, S. Stevens, P. Seo. *Row Two:* C. Caldwell, S. Bray, M. Greene, J. Furr, B. Ryan, S. Kahle, K. Fischer, J. Holder, S. Myers, G. Ferguson, L. Dicus, A. Kemp. *Row Three:* C. Eades, D. Dunlop, G. Goodwin, K. Woods, I. Beach, D. Eimer, A. Hall, P. Owensby, L. Fletcher, R. Harris, P. Whisler. *Row Four:*

J. Myers, M. Bolling, L. Johnson, L. Wood, N. Wilhite, D. Potter, L. Jarsulic, C. Lakey, S. Canada, C. Bussing, M. Oliver, M. Moot, B. Gilbertson. *Row Five:* P. Thompson, C. Kerr, T. Hock, S. Kemmerer, P. Merritt, P. Crow, L. Juett, M. Greer, B. Lane, C. Ludwigs, J. Ragan, N. Pickett.

Y-TEENS

It is the purpose of the Center High Y-Teen Club to build a fellowship of women and girls devoted to the task of realizing in our common life those ideals of personal and social living to which we are committed by our faith as Christians. In this endeavor we seek to understand Jesus, to share His love for all people, and to grow in the knowledge and love of God.



Kathy Kienberger
Secretary



Paulette Stevens
President



Angela Ellis
Vice-President



Vickie Christensen
Treasurer



Miss Cunningham
Sponsor



Mrs. Cox
Sponsor



Y-Teens practicing one of their goals: to grow in friendship.



FRENCH I. *Row One:* J. Williams, J. Cox, M. Moot, P. Zelden, S. Canada, M. Greer, J. Ragen, J. Abbott, Y. Lundahl, E. Adler, D. Dunlop. *Row Two:* C. Eads, R. Shane, C. Bullard, L. Carter, S. Cable, B. Jacobson, S. Wing, B. Kirk, P. Ray, J. Cline, S. Jones. *Row Three:* M. Heizer, C. Wyatt, K. Johnson, D. Cooper, L. Johnson,

T. Blazona, D. Housh, D. Greiner, J. Myers, N. Viets, C. Caldwell, G. Huff. *Row Four:* F. School, C. Suiter, S. Miller, K. Fischer, R. King, T. Matula, M. Limpic, B. Harding, R. Drewry, E. Banahan, B. Greenstreet, C. Rice, L. Hughes, S. Samborski.

LE CERCLE FRANCAIS

FRENCH II. *Row One:* H. Youle, J. Reckart, B. Bass, P. Stone, R. Miller, D. Smelser. *Row Two:* S. Weiner, D. Bowers, M. Cation, J. Lanoue, S. Igielnik, R. Wheeler, M. Edgerton.



The French Club, Le Cercle Francais, is composed of members of Center's French classes who have an M average or better. The 85 members meet after school to enjoy films of France, lectures, and discussions of life in France. The club sponsored a French Pastries Booth at the Carnival, and in conjunction with the Spanish Club, held a Winter Carnival at Ward Parkway Country Club. The club's officers are Linda Keltner, president; Joyee Reckart, vice president; and Gary Ernst, treasurer. Mr. Louis Selvey is the sponsor.



FRENCH CLUB OFFICERS: Gary Ernst, *Treasurer*; Mr. Louis Selvey, *Sponsor*; Joyee Reckart, *Vice President*; Linda Keltner, *President*; Pat Stone, *Secretary*.



Melissa at the bat.



Dick strikes out.

FRENCH III. *Row One:* S. Mace, G. Gibbons, J. Steiner, M. Frank. *Row Two:* J. West, K. Morrow, J. Burgen, K. Dunlop, L. Keltner, N. Pendleton. *Row Three:* K. Hankins, B. Baskin, R. Judd, G. Ernst, J. MacDonald, J. Isley.





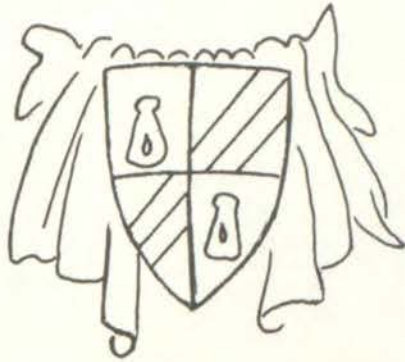
SPANISH CLUB OFFICERS — *Left to Right:* Rusty Howell, Marilyn Stevens, Vicki Christiansen, Angela Ellis. Not pictured, Mr. William Scott, sponsor.



Back Row, Left to Right: Sharon Saunders, Ellen Leonard, Tony Murphy, Bill Hall, Dennis Pangborn, Don Boswell, Jim Nap, Vernon Bailey, Brooks Fuller, Jim Biggs, Dennis Tull, Jack Sanders, Dick Root. *Fourth Row:* Joan Goldklang, Pat Crow, Patty Van Cleave, Barbara Bauer, Linda Jarsulic, Nancy Piekett, Pat Hodson, Dave Looney, John Bondon, Lloyd Friedleyk, Terry Garrison. *Third Row:* Aleda Shaffer, Sandra Hurst, Pat Herrell, Rita Levinson, Cheryl Lincoln, Ginger Johnson, Beth Stuby, Betty Reed, Jeff Marks, Tommy Holcom. *Second Row:* Joanne Bredeman, Linda Barnes, Janice Garry, Sharon Podraza, Vicki Zumwalt, Carol Tooley, Linda Keltner, Tanya Martin, Barbara Greenbaum. *Front Row:* Gary Kelley, Linda Juett, Erika Dagerman, Carol Trillin, Judy Spitcaufsky, Gene Wright.

Back Row, Left to Right: Rusty Howell, Fred Biggs. *Front Row:* Leslie Barnes, Vicki Christ-Judy Siemon.

SPANISH CLUB



All students who are enrolled in the Spanish classes are members of Spanish Club. This club is a member of the People-to-People program, and members have begun correspondence with a group of students in Venezuela. They made a pledge to the foreign exchange student program. They held their dance in conjunction with the French Club again this year.



Phares, Jim Craig, Tom Birdwell, John Iansen, Sandie Shapiro, Marilyn Stevens,

Back Row, Left to Right: Barry Franklin, Bill Tucker, Tom Hasting, Steve Levitch, Don Coleman, Dan Rankin, Joe Sturgess, John Munns, Richard Hoverstock, Dean Miller, Bob Treasure, Bill Stout. Third Row: Dave Coleman, Carolyn Crail, Laurie Dieus, Linda Corben, Angela Ellis, Griffin Caldwell, Bart Albright, Jerry Hamley, Stan Munns, Jim McMurtry, Jim Jemison, Mike Goldwasser, Robert Zeldin. Second Row: Sally Kahle, Joanna Holder, Sandy Glennon, Janet Tarleton, Barbara Brimer, Carol Bussing, Terry Hock, Suzanne Miller, Toby Matthews, Martha Greene, Barbara Gittleman, Harry Himmelstein, Alan Katzberg. Front Row: Diane Kennedy, Jerry Goodwin, Sandy Hunt, Marilyn Bolling, Bobette Watson, Beth Stolov, Kerry Goldberg, Martha Oliver, Pat McCarthy, Katsy Hamilton, Betty Criscuolo, Linda Fletcher, Pat Owensby.



Members of Latin III study a translation.

LATIN III CLUB



OFFICERS: *President*, Don Drover; *Vice-President*, Kathy Kienberger; *Secretary*, Sue Thompson; *Treasurer*, Sol Dubin; *Program Chairman*, Maybelle Horn.



Three Latin units form the Castalians. Although separate with respect to proficiency, they are united by common goals. Each member strives for a better understanding of the Latin language and the Roman people. One week a year is designated Latin Week in which this knowledge of Roman Culture is applied in furthering the aims of the Castalians.



Latin II officers admire an architectural project. *President*, Sandy Stevens; *Vice-President*, Don Snoddy; *Secretary*, Candy Miles; *Treasurer*, Phyllis Weinstein; *Program Chairman*, Bill Henry.

LATIN II CLUB

Latin II pays tribute to a great language.





Members of the Latin I Club portray a gladiatorial show.

LATIN I CLUB



OFFICERS: *President*, Donna Anderson; *Vice-President*, Paul Heath; *Secretary*, Greg Musselman; *Treasurer*, Annette McGinnis; *Program Chairman*, Bill Frey (not pictured). *Adviser*, Miss Lorene Roller.

At Christmas Latin I adopted a family. Here members are shown preparing food for the family.





QUILL AND SCROLL



Row One: Mr. Thomas J. Stow, Sponsor; Paulette Stevens, Secretary; Betty Criscuolo, Vice President; Bernie Barsky, President; Kathy Kienberger, Treasurer; Mrs. Luanne Lasswell, Sponsor. *Row Two:* Berton Miller, Vickie Christensen, Susie Schoeder, Judy Siemon, Harriet Youle,

Pat Stone, John Thornbrugh, Alan Katzberg. *Row Three:* Frank Ross, Mike McAuley, Carol Crail, Barbara Warren, Claude Lafler, John Renick, Jim Craig, Mike Goldwasser. *Row Four:* Jack Isley, Ken Dunlop, Dave Peterson, John Munns.

100 G I R L S



Barbara Greenbaum, Susan McMurtry, Nancy Pendleton, Janet West, Janie Steiner.

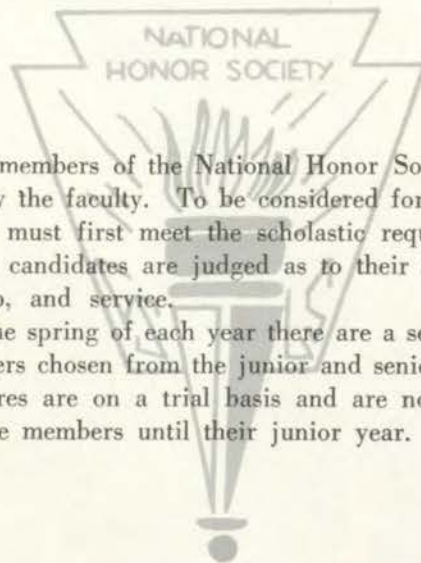
100 Girls is an organization made up of 10 girls from 10 different schools in the greater Kansas City area. It is based on scholarship, character, and interest in higher education. Sandy Allen, Joyce Reckart, Barbara Warren, Karen Westring, and Harriet Youle were chosen last year and are still members this year.

NATIONAL HONOR SOCIETY



Row One: Viki Cummings, Sue Thompson, Harriet Youle, Betty Criscuolo, Kerry Goldberg, Vickie Christensen. *Row Two:* Joyce Reckart, Sandy Allen, Frank Ross, Jack Isley, Terry Beach,

Sherrie Clark, Dan Smelser. *Not Pictured:* Judy Martasin and Gary Orren.



The members of the National Honor Society are chosen by the faculty. To be considered for membership one must first meet the scholastic requirements. Then the candidates are judged as to their character, leadership, and service.

In the spring of each year there are a set number of members chosen from the junior and senior classes. Sophomores are on a trial basis and are not eligible to become members until their junior year.

THE SEARCHLIGHT



Mrs. Lasswell discusses an issue of the Searchlight with editors, Mike and Jack.

The Center Searchlight, published bi-weekly, reports and displays every phase of student life at our high school. Work on the Searchlight instills in each staff member the principles of good reporting and objective observation. Under the supervision of Mrs. Luanne Lasswell, adviser; and Jack Isley, editor-in-chief, this year's paper has been praised as one of the best in recent times.

The Searchlight Staff

<i>Editor-in-Chief</i>	-----	Jack Isley
<i>Managing Editor</i>	-----	Mike McAuley
<i>Editorial Page Editor</i>	-----	Barbara Rosenberg
<i>Assistant</i>	-----	Darlene King
<i>Sports Editor</i>	-----	Frank Ross
<i>Assistant</i>	-----	Alan Katzberg
<i>Features Page Editor</i>	-----	Susan McMurtry
<i>Assistant</i>	-----	Pat Stone
<i>Art Editor</i>	-----	Don Coleman
<i>Photography Editor</i>	-----	Berton Miller
<i>Reporters</i>	-----	Sande Keilhack, George Lacy, Barbara Bass, Nata Blum, Claude Lafler, Rusty Howell, Judy Siemon, Nancy Hackleman, Barbara Warren, Barbara Weinberg, Bob Krogsdale, Randy Forbis.
<i>Faculty Sponsor</i>	-----	Mrs. Luanne Lasswell



The Searchlight editors and Mrs. Lasswell supervise the paper's publication

The reporters write out their articles for the next deadline.



Staff members look over their assignments and articles.



YELLOWJACKET STAFF

The Center Yellowjacket Staff is responsible for publishing the annual yearbook. They have tried to capture in pictures all the spirit, excitement and fun of the school year, as well as the serious moments, so that years hence, the memories will still live on.

THE YELLOWJACKET STAFF

Editor-in-Chief	Frank Ross
Editor	Harriet Youle
Assistant Editor	Janet West
Managing Editor	Bernie Barsky
Assistant Managing Editor	Carol Duff
Art Editor	Barbara Warren
Photography Editors	Betty Criscuolo Berton Miller
Assistant Photography Editor	Bill Baskin
Sports Editor	Mike McAuley
Assistant Sports Editors	John Thornbrugh Doug Wills
Classes Editor	John Munns
Assistant Classes Editors	Kathy Kienberger Janie Steiner
Organizations Editor	Dave Peterson
Assistant Organizations Editor	Sandy Stevens
Activities Editors	Carol Crail Paulette Stevens
Circulation Manager	Kenneth Dunlop
Secretary	Vickie Christensen
Advisor	Mr. Thomas Stow



Mr. Stow, advisor, and Mr. Tillberg, consultant from the publisher, discuss the yearbook, as staff members work on their assignments.



Staff members pause from their work at a meeting and look up for a picture.

Yellowjacket editors discuss various phases of the book with Frank and Mr. Stow.



INDUSTRIAL ARTS

Officers of the Industrial Arts club are (l-r.) Bill Noonan, President; Don Smith, Vice-President; and Mike Niebaum, Secretary-Treasurer. Mr. Wilcoxon sponsors this organization.

The purpose of the club is to develop the creative ability of each member in working with shop tools and products. These boys take pride in completing difficult wood and metal projects.



Ricky Huber demonstrates lathe technique to Chuck Hollingsworth and Richard Kier.



Displaying the beginnings of various wood projects are (l-r.) Dick DeFries, Mike Niebaum, Ricky Huber, Gary Jenkins.



Terry Berlekamp, Richard Keir, Don Smith, and Bill Noonan inspect tools from the tool chest.



FUTURE BUSINESS LEADERS OF AMERICA

The number one purpose of the FBLA organization, as listed in the handbook, is to develop competent, aggressive business leadership. A few other important functions of the club are to:

1. Create more interest and understanding in the intelligent choice of business occupations.
2. Participate in worthy undertakings for the improvement of business and the community.
3. Improve and establish standards for entrance into store and office occupations.

The club's activities included a survey of businesses in our district to set up a school job-placement bureau, the setting up of the national organization *Operation Econ* to familiarize students with basic economic principles, and field trips to the Federal Reserve Bank and offices in the area.

Motto: Service-Education-Progress



President Vickie Christensen presides over the various officers. L-r. are Carol Duff, Historian; Sherrie Clark, Secretary; Sandy Allen, Treasurer; and Leslie Barnes, Vice-President. Sponsors are Miss Altis and Mr. Henry.

Members of the F. B. L. A. are (l-r. standing) Carol Duff, Sherry Clark, Sandy Allen, Leslie Barnes, Barbara Weed, Kathy Northington, Shirley Cox, Juanita Wallo, Fran Gross, Lynn Ferguson, and Dana Cooper. Seated are Vickie Christensen, Carol Crail, and Kay Morrow. Not Pictured: Chester Phelps.



C.O.E.

the
Top



2

Katz
DRUG CO.

all 

A & P



The library is a major asset to any high school. The Center Library Staff this year has done a fine job in maintaining our library. The 53 staff members shelve, check-out, and care for the books, make displays and keep the library in good order. Miss Marie Cunningham is the Head Librarian.



Miss Marie Cunningham, Librarian

LIBRARY STAFF

LIBRARY ASSISTANTS. *Row One:* J. Garry, S. Steel, A. Hall, S. Cox, M. Wiebold, R. Levinson, K. Thornton, L. McGhee, S. Watson, L. Barnes, S. Parrick, C. Gervais. *Row Two:* J. Jurgeson, G. Petty, S. Nylund, L. Ebner, S. McInvale, J. Onsted, S. Kaufman, K. Woods, G. Gibbons, H. Blonsky. *Row Three:* B. Wholey, L. Eichholz, M. Farabee, M. Remis, R. Stottlemire, L. Emerson, B. Allen, G.

Himelstein, J. Willoughby. *Row Four:* S. Kahle, P. Heise, R. Liber, D. Sharp, K. York, R. Zacher, J. Burgen, V. Ferguson, M. Ruane, A. Kemp, J. Pierce. *Not Pictured:* C. Phelps, F. Sallaz, D. McNeil, S. Ramsey, N. Smith, S. Gunderson, J. Brening, S. Gregg, J. Summer-skill, P. Merritt, S. Eltrick.



Home Economics Club



Left to Right: Diane Kennedy, Treasurer; Carolyn Denny, Vice President; Jane Anderson, President; Cathie Clayton, Secretary; Miss Virginia Smallwood, Sponsor.

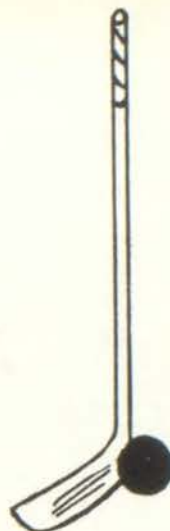


The Home Economics Club is one of the newer clubs at Center. Its members, under the sponsorship of Miss Smallwood, take an active interest in all phases of home living and proudly proclaim that they are future home-makers.



Row One: K. Spencer, L. McGhee, D. Kennedy, P. Coleman, J. Robards, P. Owensby, C. Eades, C. Clayton, Row Two: J. Cline, P. Heise, C. Denny, S. Haughenberry, S. Marlin, J. Dresnick, M. Remis. Row Three: B. Miller, P. Hawks,

J. Anderson, D. Forste, V. Ferguson, L. Johnson, A. Kemp, R. Harris, M. Schranz. Row Four: V. Mason, S. Urdang, S. Frazier, L. Taylor, S. Kemmerer, C. Withrow, P. Cade, R. Zacher.



G.A.A. Officers pictured from left to right are Joyce Robards, *Vice President*; Pat Merritt, *Secretary*; Val Golden, *President*; and Sandy Hunt, *Treasurer*.



G.A.A. sponsors, Miss Sue Holt and Mrs. Winifred Sutor.



Standing: Sharon Shelton, Sandy Fraser, Diane Forste, Peggy Cade, Rosie Zacher, Sharon Kemmerer, Carol Withrow, Betty Allen, Linda Brenning. *Kneeling:* Vickie Gist, Diana Doolan,

Joyce Rohner, Linda Fletcher, Pat Owensbey, Barbara Rollins, Linda Eicholz, Diane Kennedy, Nancy Arnold.



President John Renick presides over Student Council meetings. Seated are Angie Ellis, Secretary; and Rick Abernethy, Treasurer. Conley Funk, Vice President, not pictured. *First Row:* Representatives Janie Steiner, Susan Mace, Joanne Bredeman, Diane Potter, Vickie Christensen, Becky Arnold, Linda Wood, Sharon Marlin, Carolyn Scott, and Jimmy Barry. *Second Row:* Janet West, Dave Peterson,

Jim Biggs, Bill Osthoff, Gary Orren, Dan Rankin, Bill Baskin, Bob Harrison, Berton Miller, and Sandy Stevens. *Top Row:* Carol Brewer, Howard Eisberg, Paul Heath, Gary Simmons, Jack Isley, Gary Sloan, Kathy Lane, and Cheryl Brown. Not pictured are Mike Goldwasser, Susan McMurtry, Bill Minshall, Kay Morrow, and Bob Norman.

Capable student body leaders are Council officers Rick Abernethy, *Treasurer*; Angie Ellis, *Secretary*; and Conley Funk, *Vice President*.





The Student Council is the student governing body of the school. The Council is composed of one representative elected from each home room.

Under the guidance and sanction of Mr. Smith, our Assistant Principal, and Mr. Mader, Senior High Counselor, this group organizes and sponsors student activities. The Council sponsored several dances, some of which were casual mixers after football games. The Homecoming Dance and Snowball Dance were also sponsored by the Council. This group sold Yellowjacket crests, and operated the bookstore part of the year to raise money. Playing an important part in and initiating the Foreign Exchange Student Fund Drive, the Council sponsored three activities for raising money. The first was a 3-day fund drive at the Jr. High led by Susan Mace. Then came the first annual Faculty Basketball(??) game, followed by a Chili Supper before the next basketball game.

Student Council officers were elected last year by the student body. Seniors and Juniors will remember the campaigns which brought John's party into office.

STUDENT COUNCIL

Center was fortunate this year to have the worthy leadership of Student Council President John Renick. On either side of John are Council sponsors Mr. Smith (right) and Mr. Mader (left).



Student Council sponsored several dances during the year.



SCIENCE CLUB



The Science Club promotes scientific interests within the school. The purpose of the club is to stimulate interest in projects for the Science Fair. All students are interested in having their projects displayed in the Kansas City Science Fair. Some of the activities of the club this year were a field trip to Reed Wildlife Preserve, a trip to Midwest Research Institute and programs featuring noted scientists in the area. A few students also belong to the Kansas Junior Academy of Science.

OFFICERS AND SPONSORS: John Munns, *Historian*; Gary Ernst, *President*; Richard Rosen, *Treasurer*; Mr. Emery Henley, *Sponsor*; Ray Moot, *Vice President*; Mike McAuley, *Secretary*; Mr. H. E. Steiner, *Sponsor*.



MEMBERS: Mike Bray, John Munns, Stan Munns, Richard Drewry, Nancy Pendleton, Joyce Reckart, and Vicki Cummings.

MEMBERS: David Peterson, Dennis Tull, John Weaver, Don Drover, Bill Baskin, Bob Brown, Bill Henry.



Mr. Ed Steiner, Dick Hall and Steve Brisley examine the model of a human torso.



Mike carefully planned his science project on the transfer of learning in planaria before the actual construction.



After initial experimentation, Nancy held a poster in place to get a general idea of her finished project.



Microscope, beakers, test tubes and hair play an important role in John's experimentation for his science project, which deals with the strength of hair.



Bernie Barsky joins Dick Hall and Dave Peterson in a rundown of the bones of a skeleton.



Vicki is relieved that her science project is completed. She has a feeling of accomplishment although her project entailed a lot of work.

Dear Paul

Well I finally
got to sign your year-
book. It's really been
great being with you
this year. You had the
greatest time. I know
that if I could see you
at the time I did. I know
so much about him I
feel like I know him
already.

I thought you sure
that if "The Lam" would
have stayed and I would
be lucky enough to get
in it would ~~have~~ have
made it even closer.
But - Ah! Ah! well

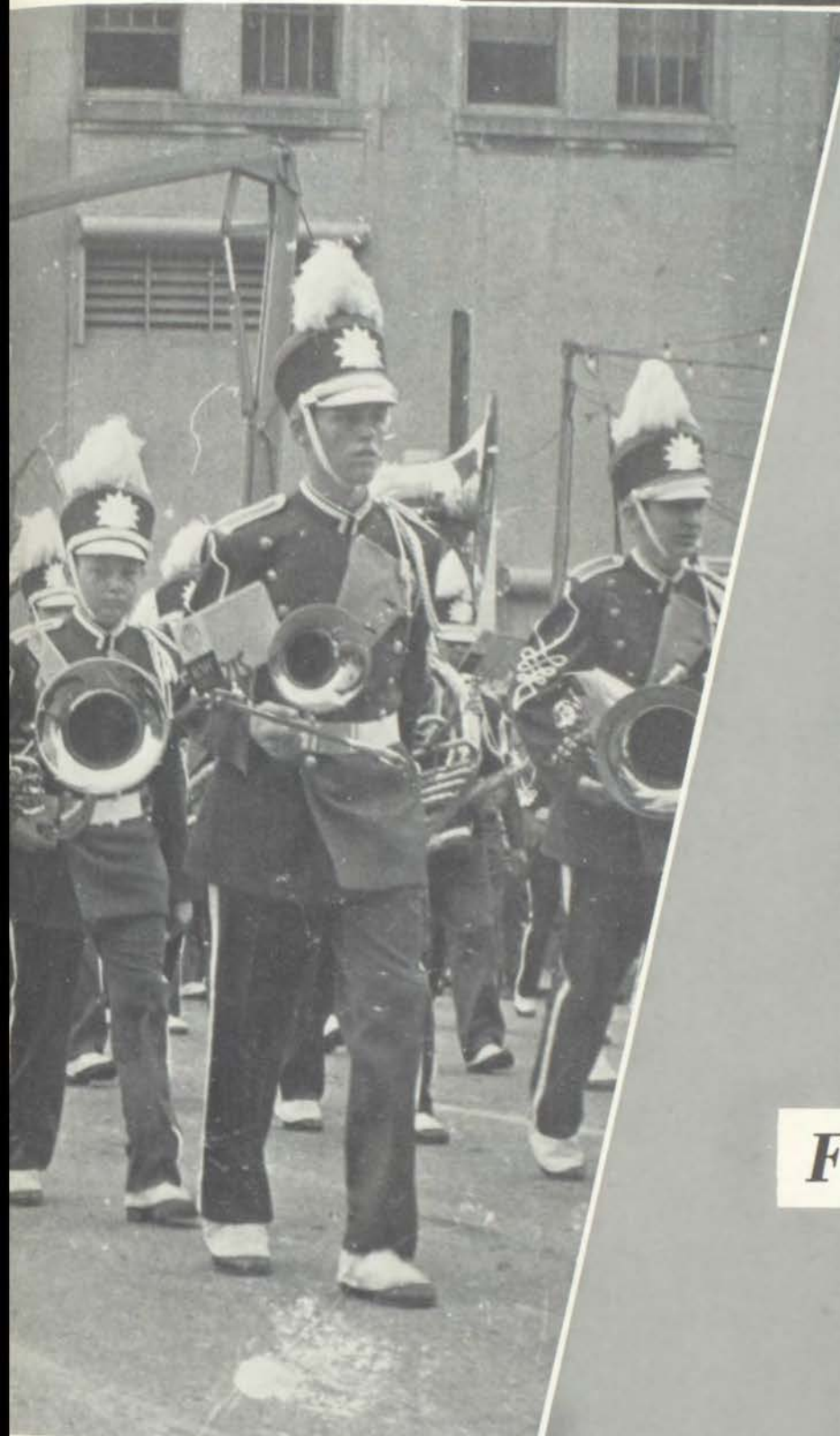
I'm sure this summer
will be filled with
excitement! Is it anything
like last summer it will
be. I'm excited but in
a way. Last year
because of Larry & all.
That's been quite an episode
isn't it? The friends.

Well, I really just
want to say I hope we
can be together in the
years to come and
have as much as more
fun ~~as~~ as we have
had.

Just wait & see, at the
end of the summer you'll
have had 20 reviews or
20 different days! You
see I'm not right!

All the best in the world
I am always,
Luddy





FINE ARTS



DRAMA CLUB

Center's Drama Club offered their services to the cast members of both the Fall and Spring Play productions this year. The club also experimented in the use of make-up for the stage and various stage techniques.

Pictures: *Upper Left:* Steve Levitch, Beth Stolov, Mike Travis, Larry Ebner.

Upper Right: Bob Holder, Jack Isley.

Bottom Left: Barbara Gittleman, Muriel Frank, Rick Liber, Terry Beach, John Jones.

Bottom Right: Linda Keltner, Donna Schupp, Sandy Wiener, Benny Harding, Tom Nee, Ruth Dickson, Tom Birdwell.



Jim Craig, *Vice-President*; Phyllis Sloan, *Treasurer*; Betty Criscuolo, *Secretary*; Mrs. JoAnn Thompson, *Sponsor*; George Polkinghorn, *President*, (Not Pictured).



THE SPOTLIGHTERS

"Props — where's that door?"

"Watch out, here comes the south wall!"

These lines could possibly be heard as the Spotlighters expertly execute their duties. Led by their sponsor, Mr. Mackey Wilcoxon, these boys constitute an unseen part of each production presented on the Center stage. Taking no bows and seeking no publicity, the Spotlighters work hard to attain the reward of a personal knowledge of a job well done.



Seated: Mr. Wilcoxon. Standing, Left to Right: Richard King, George Polkinghorn, Chuck Callas, Terry Burlecamp, Mike Brown, Rick Martin, Charles Mercer, and Mike Niebaum.

Terry Burlecamp, George Polkinghorn, Rick Martin, Mike Brown.

Mike Niebaum, Charles Mercer, Chuck Callas, Richard King.



- Mollie Ralston _____
- Giles Ralston _____
- Christopher Wren _____
- Mrs. Boyle _____
- Major Metcalf _____
- Miss Casewell _____
- Mr. Paravinci _____
- Sergeant _____
- Radio Announcer _____



"Georgie, Georgie, you know me don't you?"

THE MO

The cast presents Mrs. Thompson, director, with a gift at curtain call.

"Wherever I go that woman seems to hunt me down!"



st.

- Tanya Martin
- Jim Craig
- Terry Beach
- Linda Keltner
- Tom Nee
- Betty Criscuolo
- Benny Harding
- Terry Callis
- George Polkinghorn



"I'm sorry, but I want your co-operation and I intend to get it."

USETRAP

"My name, by the way, is Paravicini."

"We'll stow your skis away under the stairs, Sergeant Trotter."



DEBATE CLUB



Mr. Brown, sponsor of Debate Club, gives pointers to Russ Usnick for oratory.

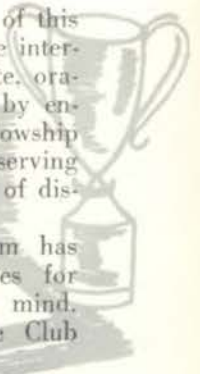
In the debaters' handbook this is written:

"It shall be the purpose of this organization to promote the interests of interscholastic debate, oratory, and public speaking by encouraging a spirit of fellowship and by conferring upon deserving candidates a worthy badge of distinction."

The Center Debate team has taken part in its activities for 1962-63 with this idea in mind.

Officers for the Debate Club are:

- President ----- Donna Schupp
- Vice President -- Sue Thompson
- Treasurer ----- Conley Funk
- Secretary ----- Harriet Blonsky



Debaters run through speeches before tournaments. Left to right are Larry Searcy, Terry Goodman, Benny Harding, and Ron Hyatt.



Members of the Debate Club are (l.-r.) Betty Barrack, Jim Tischer, Donna Schupp, Larry Searcy, Sue Thompson, Harriet Blonsky, Steve Levitch, Terry Goodman, (seated) Russ Usnick, Richard Drewry, Ron Hyatt, Jerry Greenstein, Benny Harding, Richard Rosen, and Tom Portman.



ART CLUB

The Art Club has been an active club this year, displaying their talents throughout the school in the form of posters, decorations, and murals. The club strives to develop each student's appreciation of art by exercising creative ability.

Behind the Art Club officers and sponsor (right) is an example of creative work that these students do for the school.



SPONSOR AND OFFICERS — *Left to Right:* Miss Koste, sponsor; Phyllis Burkholder, Vice President; Diana Doolan, President; Ruth Hall, Secretary-Treasurer.



Art students (*L.-r.*) Sheila Bradford, Debbie Clark, Mary Myers, and Phyllis Burkholder enjoy a feeling of pride in completed pieces of art work.

MEMBERS — (*L.-r.*) Steve Williams, Ruth Hall, Gary Don Carlos, Sheila Bradford, Debbie Clark, Larry Davis. *Seated:* Phyllis Burkholder, Mary Myers, and Diana Doolan.



GIRLS' GLEE CLUB



Over two-hundred girls who have fun singing met and vocalized under the direction of Mr. Jack Overbey. First semester they met twice each week; second semester three times weekly. While having fun, the Girls' Glee Club worked diligently learning the basic principles and techniques of group singing. The girls' hard work resulted in much enjoyable and harmonious entertainment for the student body during assemblies. Mrs. Albright accompanied both the Boys' and Girls' Glee Clubs and gave valuable service to them.



BOYS' GLEE CLUB



The one hundred and twenty-five members of the Boys' Glee Club sang lustily. They worked hard, meeting on Mondays, Wednesdays and Fridays of the first semester and on Tuesdays and Thursdays of the second semester. Under the direction of Mr. Jack Overbey they sang excellently and earned the applause of those who heard them. The boys followed much the same course as the Girls' Glee Club. The most talented of both these groups were chosen to represent Center at Missouri State Music Contest held at Warrensburg each spring.





GENTLEMEN SONGSTERS. *Left to Right:* E. Tiemann, W. Huber, S. Sanders, C. Funk, B. Minshall, C. Phelps, J. Isley, J. Biggs, S. Casterline, R. Nesseth, G. Ballew, J. Boles, J. Sturgess, R. Reese, M. Finucan, G. Lacy, H.

Wimp, D. Cowden, L. Minor, R. Hoverstock, B. Krogsdale, G. Polkinghorn, T. Beach, J. Lanoue, F. Ross, D. Rankin, D. Smelser, (pianist).

The Gentlemen Songsters, new at Center this year, is a group composed of boys from the choir. Singing for various civic groups throughout the city, the Gentlemen Songsters have represented Center well. The group is directed by Mr. Jack Overbey. Dan Smelser is Student Director. Mrs. Shirley Albright is the accompanist for the Choir and Glee Clubs.

Mr. Jack Overbey

G
E
N
T
L
E
M
E
N

Mrs. Shirley Albright



S
O
N
G
S
T
E
R
S

Dan Smelser



CHOIR ACTIVITIES



The a cappella choir, one of the most active and representative organizations at Center, has had many opportunities through the past year to display their talents. Their various appearances have done much to add distinction to Center High. At the left, the choir, accompanied by a fourteen piece orchestra, sings "Gloria" at the annual Christmas Concert.



Above, the Choir poses for a picture after one of their numerous church visits.

The Christmas season brought several invitations to the choir. *Above*, the Gentlemen Songsters ("pride of the Center music department") perform at the Ward Parkway shopping center. *Below*, the swelling sounds of music draw many people to see the choir sing at the shopping center.



CENTER - A



SOPRANOS: Sandra Allen, Wanda Anders, Jane Anderson, Sharon Baker, Judy Bell, Leona Boeger, Angie Ellis, Sharon Flickenger, Muriel Frank, Jan Furr, Tonya Gehrs, Valeria Golden, Darlene King, Diana Kinniard, Kathy Maher, Tanya Martin, Pat McCarthy, Carol Miller, Sharon Miller, Kathy Morelana, Janice Phillipe, Michele Relder, Carol Remington, Sandi Rice, Sandi Shapiro, Diane Sharp, Joy Sharp, Kendra Sloan, Judy Smith, Paulette Stevens, Beth Stolor, Elaine Thistle, Carolyn Tooley, Virginia Vandever, Pam Olivero, Rosalyn Miller, Fran Baker.

ALTOS: Leslie Barnes, Betty Criscuolo, Linda Davin, Diana Doolan, Sharon Dugan, Ruth Hall, Katsy Hamilton, Linda Houk, Sande Keilhack, Kathy Kienberger, Kim Kirkpatrick, Janet Lindeman, Jonna Miller, Phyllis Sloan, Judy Spiteaufsky, Judy Steeps, Marilyn Stevens, Donna Triozzi, Janice Dresnick.

TENORS: George Ballew, Terry Beach, Bob Brown, Mike Bumgarner, Todd Conklin, Dave Cowden, Bill Hall, Richard Hoverstock, John Jones, George Lacy, James Lanoue, Jim Morrison, Bill Noonan, George Polkinghorn, Dan Rankin, Frank Ross, Dan Smelser, Gary Wackerhagen, Harold Wimp, Glen Yager, Mike Finucan.

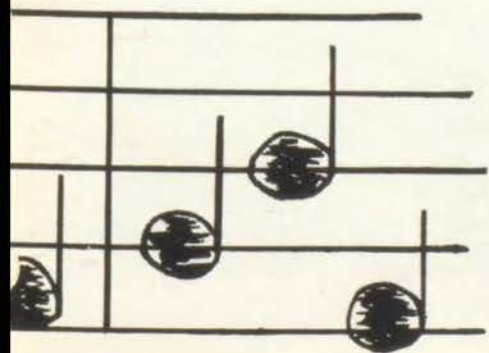
BASSES: Bart Albright, John Biggs, John Boles, Steve Casterline, Dave Coleman, Larry Druen, Conley Funk, Willy Hoelzel, Gene Houtz, Wayne Huber, Garrett Hunsperger, Robert Hunsperger, Jack Isley, Richard King, Bob Krogsdale, Steve Levitch, Joe Mallory, Carl Mayfield, Bill Minshall, Russ Nesseth, Dennis Pangborn, Mike Petersen, Chester Phelps, Roger Reece, John Renick, Steve Sanders, Don Smith, Paul Smith, Joe Sturgess, Ed Tiemann, Tom Welterman, Gene Wright, Dean Yost, Gary Young.



CAPPELLA CHOIR



Mr. Overbey





The Marching Band helps boost school spirit at a football game!!



CONCERT *and* **MARCHING** **BANDS**

The Center High School Concert Band and the Marching Band under the direction of Mr. Hirsch have grown remarkably in the past few years. The Concert Band amply displayed its talents when it gave a concert for the student body in a special assembly. The Marching Band added to school spirit during the half times of home football games by doing drills in the field.

Hup! Two! Three! Four! The Marching Band, to the pride of all Centerites, marches in the American Royal Parade.



Dear,

— Love well

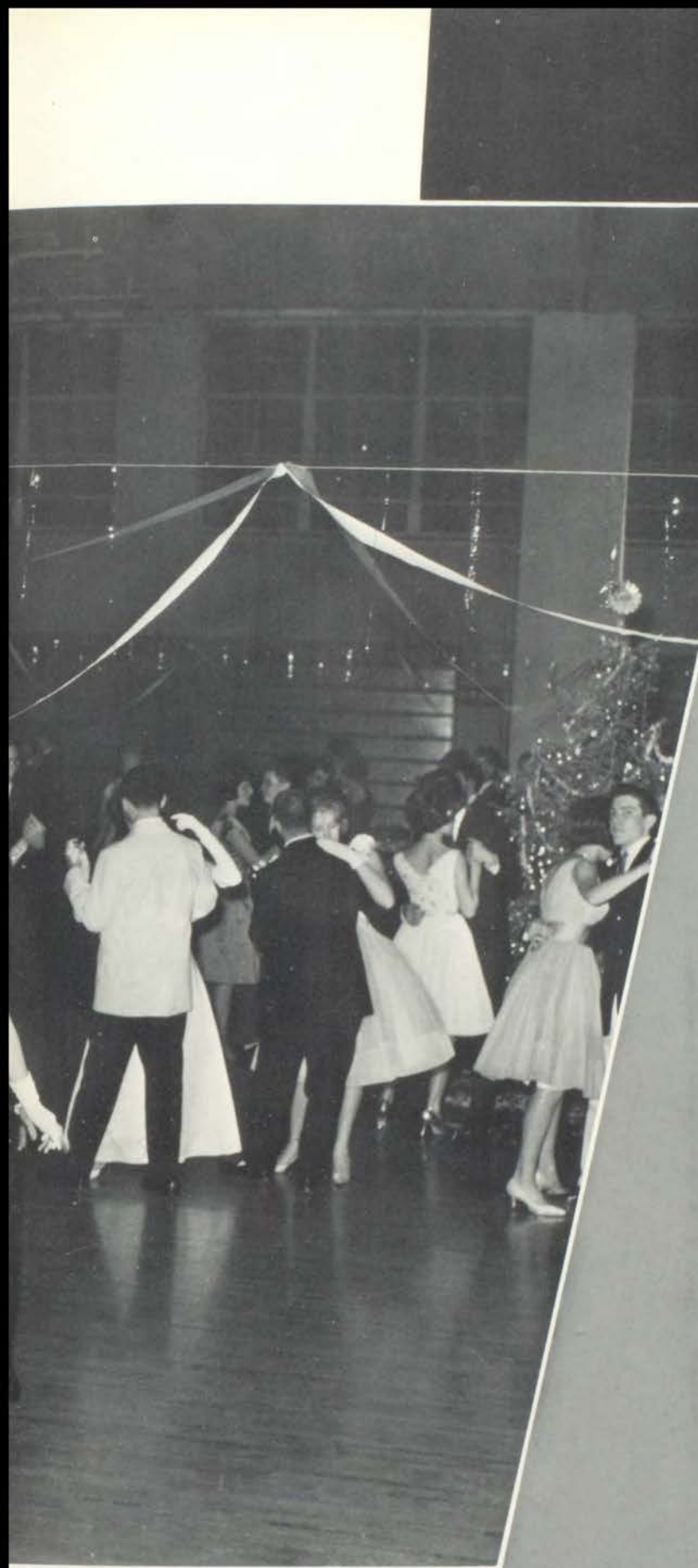
but had to get
out of school and
away from you (get
liddy) I think you
are a real nut and
I hope to see
you this summer

Love
Garry
"64"



I and
Dore are has been
from having you in
English this year you
are Donald Hook I do
not no who was the
worst. Hope to have you in
some classes next year
Good Luck
Always

Garry
Penkin
P



ACTIVITIES



**CENT
FIN
CARN**





ER'S
AL
VAL

*Carol
has been
great & fun - this
year. I'd still like
to get a date though
maybe next year.
Lots of luck
Love ya
G. Nap
"64"*





Scenes

Around





**C
E
N
T
E
R**



1962

SNOWBALL

QUEEN



Miss Sharon Miller

The 1962 Snowball Queen, her attendants and their escorts (l to r) Russell Nesseth, Harriet Youle, Kathy Kienberger, Gary Sloan, Gary Ernst, Sharon Miller, Martha Greene, Ronald Kraft, Susan Mace, Tom Nee, Donna Schupp, Bob Holder.



Susan Mace . . .

Our

Student from Brazil

Center's third American Field Service student, Susan Diane Gama Mace, is a real Latin beauty. She came from Rio Grande, Brazil and lived with the Robert Youle family during her stay in Kansas City. Susan, the first student from Rio Grande to be awarded the American Field Service International Scholarship, was thrilled with the opportunity to come to the United States to learn something of our way of life and teach us something of her way of life. Susan felt that the A. F. S. gave her the opportunity to work for greater understanding and world peace.



Susan gives one of her many speeches during her year in Kansas City.



The official presentation of the class ring.



Left: Susan went ice skating for the first time and didn't fall once!

Right: Susan was welcomed to Center by a "mixer" after a football game where she was given a dozen red roses which were provided by the P. T. A. and presented by John Renick.

**YELLOW JACKET
ATTENDANTS**



Miss Melissa Edgerton

Mr. Bill Minshall



Miss Vickie Christensen

Mr. Larry Druen

**YELLOWJACKET
KING AND QUEEN**



Miss Barbara Weed



Mr. Dan Rankin

Dear Carol,

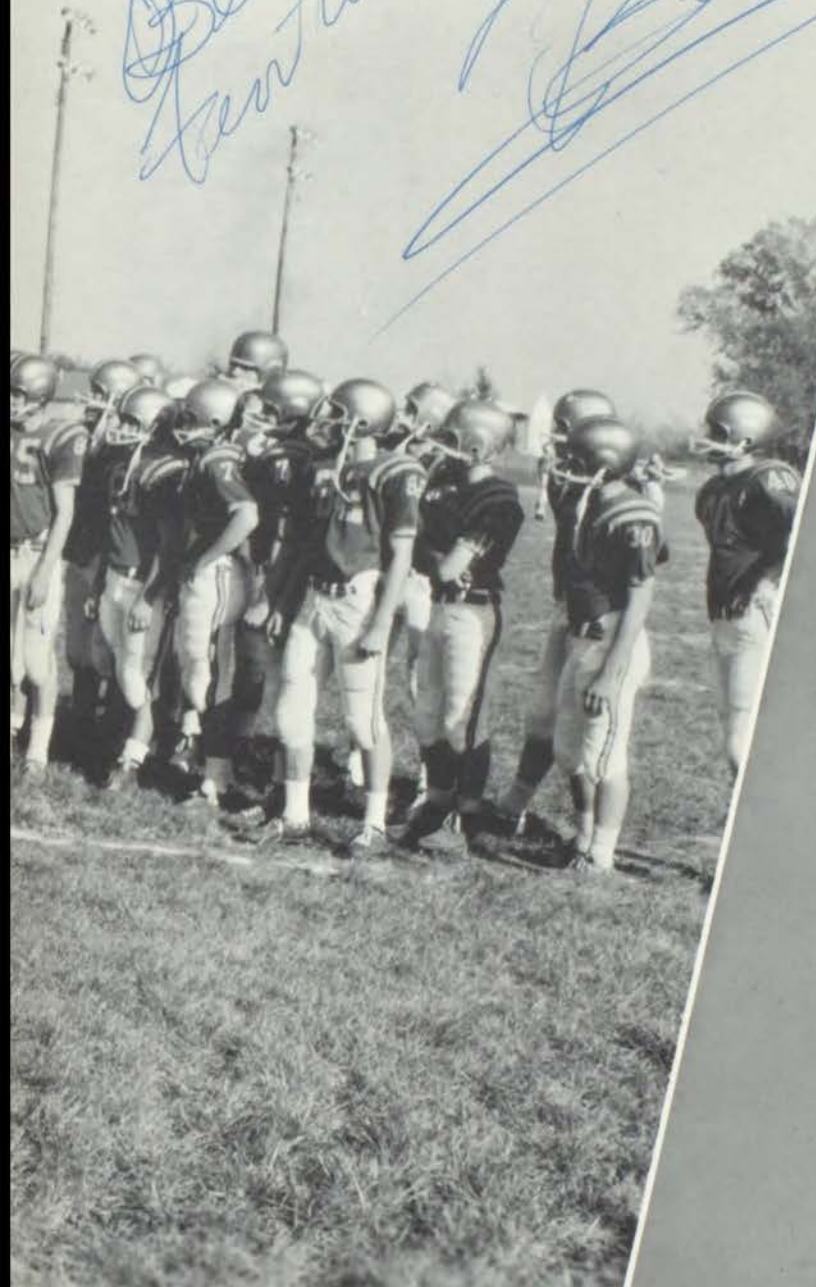
Hell - this sure has been a long year - but also one packed
full of wonderful memories - I'll never forget mine and I
know you'd always remember yours too! Here's some advice
from ye ole philosopher - 'Pack away your memories as an
"Unfinished Symphony". Also it's better to forge hand be
happy than to remember and be sad. I'll see you this summer -
good luck and much happiness in the coming year - cause, well,
you truly deserve it - don't ever change for anyone!

Love You,

Gandy
64

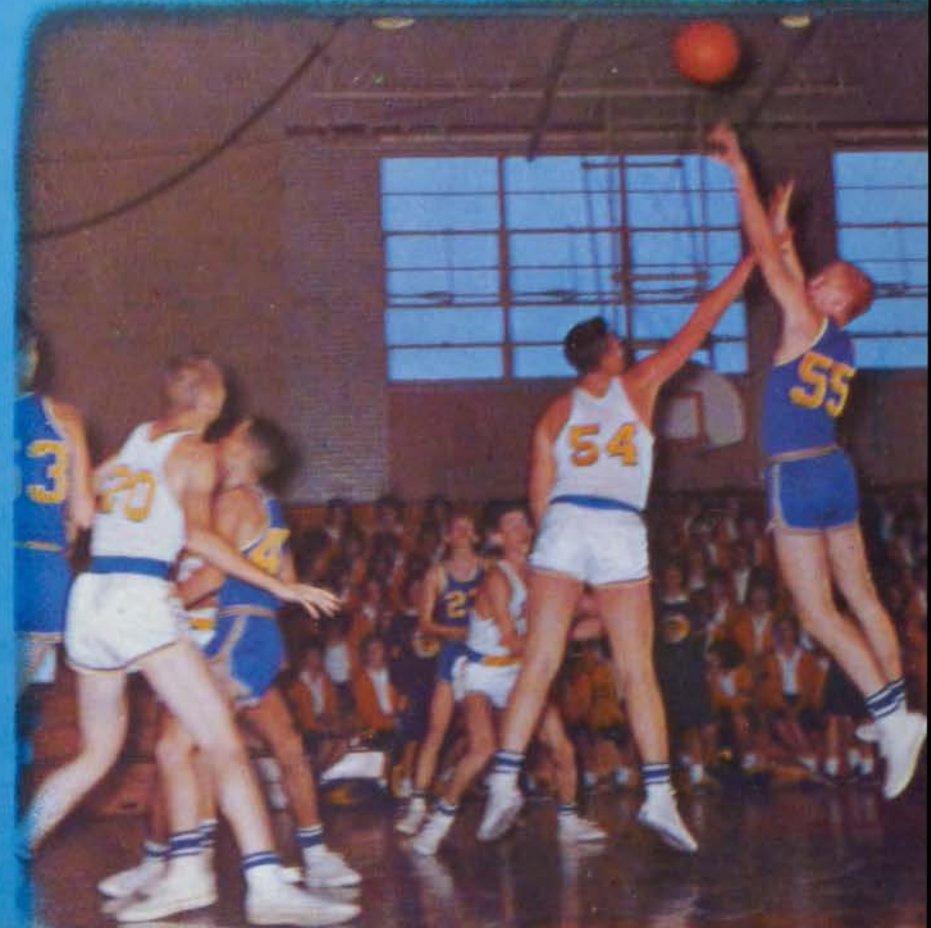
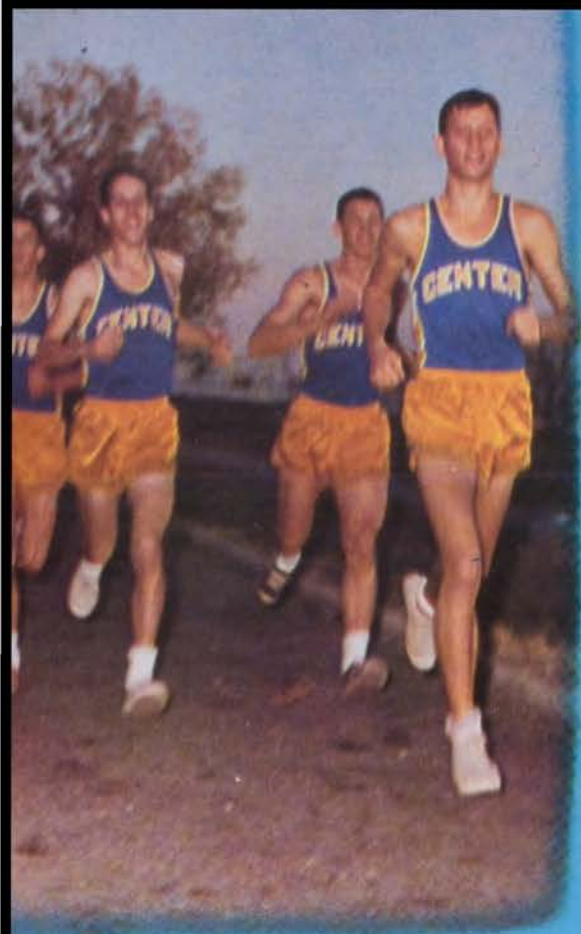


Could I be Sam
Best thing you
Be Good and love
I'm this summer
Lots of luck,
Bob



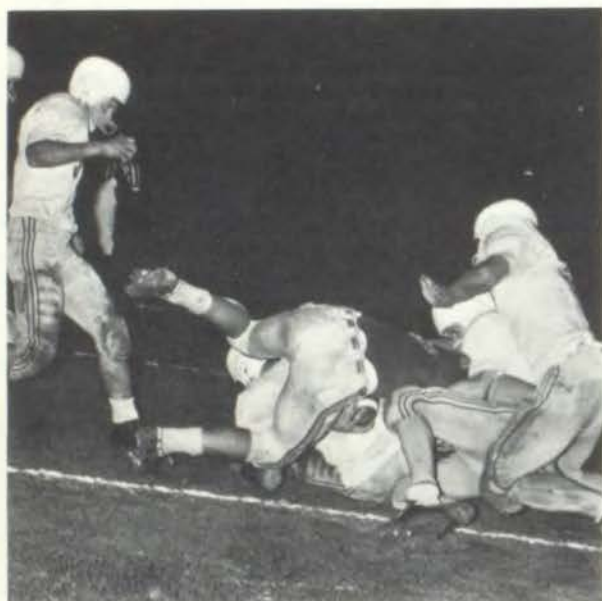
SPORTS





Center 6 Westport 0

Despite somewhat sloppy grounds, Center won its first game of the season by edging Westport 6 to 0. In the first quarter the Tigers and the Yellowjackets fought up and down the field. At the half the game was scoreless; but after the halftime the Yellowjackets marched to their one-yard line. From there, Dan Rankin dove into the end zone. The extra point attempt was missed. The Tigers fought back but were contained near their own goal line.



Center 20 Liberty 7

The Center Yellowjackets made it two in a row with a 20-7 victory over the Blue Jays.

Playing a drab first half that ended in a 7-7 tie, the Yellowjackets came back strong with two touchdowns to overcome the passing efforts of Charlie Lee.

Rick Abernethy, junior halfback scored twice on runs of 10 and 9 yards in the second and fourth quarters. Fullback Bill Minshall also scored a touchdown in the final quarter on a 4-yard burst off left tackle. The two extra points were kicked by Alan Katzberg.

Center 13 Fort Osage 0

The Center Yellowjackets used a devastating ground game to defeat the Fort Osage Indians by a score of 13-0, September 28, for their third straight victory. The Yellowjackets scored both tallies in the first half.

The touchdowns were scored after drives of 66 yards and 89 yards, the first coming to an end when Rick Abernathy plunged over from the 3-yard line. The second drive ended when Bill Minshall charged over from the 3-yard line.

The Center backs ground out 242 yards rushing to Fort Osage's 59 yards. The Indians connected 5 of 13 attempts for 84 yards and Center connected 3 of 10 for 86 yards.

During the second half, the Center Line showed tremendous power on defense and stopped Fort Osage's scoring efforts.





Center 0 Ruskin 7

A 23-yard pass play in the second quarter accounted for the only touchdown of the game as the Ruskin Eagles handed our Center Yellowjackets their second defeat in a row, 7-0.

The hard fought game saw many fine defensive plays on the part of both teams. The defense completely dominated play throughout the game.

Ruskin controlled the ball for the most part as Center crossed into Eagle territory on only a few occasions.

Center 6 Grandview 0

After two straight defeats, the Center Yellowjackets came back to take a tough 6-0 decision over arch rival Grandview on the Bulldog field. This was the third game of the year where only one touchdown was scored by either team.

Conley Funk, with 14 tackles, led a brilliant defensive effort which saw the Yellowjackets hold Grandview from scoring after they had a first down on the Center 5-yard line.

The only touchdown of the game was set up when end Bart Albright recovered a Grandview fumble on their 26 and ran it back to the 13. Bill Minshall carried it to the 2; Rick Abernethy took it over from there for the score.

Barry Wilkinson, Grandview back, led a great comeback in the fourth quarter which almost saw the Bulldogs tie the score in the closing minutes of play. With about 53 seconds remaining in the game, the Yellowjackets took over the ball and ran out the clock.



Center 28 Lee's Summit 7

Outstanding play by Jamie Lanoue, Alan Katzberg, and Conley Funk, combined with great team effort, led the Center Yellowjackets to a 28-7 win over Lee's Summit.

Three of Center's four touchdowns occurred during the first half of the game, with two coming together with only 37 seconds remaining in the half. The first touchdown occurred when Bill Minshall dove over the goal line in the first quarter. The second and third touchdowns came in succession on duplicate pass plays. The first score was on a fifteen-yard pass from Katzberg to Funk. Then, upon recovering a fumble, Alan completed a 40-yard pass that scored Funk again. After each of these touchdowns, Katzberg kicked the extra point. Center's final touchdown came in the third quarter on a 20-yard run by Jack Isley. The extra point was scored on a pass from Katzberg to Dennis Baker.



Center 32 Van Horn 6

Bill Minshall started the Jacket's scoring spree on a two yard plunge early in the second quarter. Next, Alan Katzberg scored and tallied the extra point.

Center entered the second half leading 13-6, but the team's driving power became yet stronger. Jamie Lanoue scored from the 7-yard line and the extra point conversion was good. Jack Isley completed the Yellowjackets' tallies by scoring from the two-yard line and then, after intercepting a pass, running 40 yards for the final touchdown as the clock ran out.

Van Horn was the second Inter-scholastic team which the Center Yellowjackets played and defeated.



Center 20 Blue Springs 20

The Blue Springs Wildcats came through in the fourth quarter to tie Center 20-20.

The first touchdown was scored on a 15-yard run by Rick Abernathy and the extra point was kicked by Alan Katzberg. Blue Springs then received the kickoff and fumbled, Jack Isley of Center recovering. Bill Minshall ended that scoring drive by going over from the 2-yard line for the second tally. The extra point attempt was blocked.

Blue Springs then received the kickoff and ended that series of plays with a touchdown.

The third Center tally came in the first quarter on a fine 53-yard pass from Alan Katzberg to Conley Funk. The conversion was good.

The Center defense could not hold the Wildcats as they scored again. At the half the score was 20-13. In the third quarter neither team could gain enough field position to score. In the fourth quarter the Center line could not fill up the hole in the middle of the line. Blue Springs used this to their advantage and finally scored and made the extra point good, to make the final score 20-all.

Center 7 Chrisman 18

In the last football game of the year, the Yellowjackets went down to an 18-7 defeat at the hands of William Chrisman on November 16. The game was played at Chrisman on a very muddy field.

The Yellowjackets were the first to score, when Bill Minshall drove across from the one yard line during the early stages of the second quarter. After the extra point, Center held a 7-0 lead. The remainder of the first half saw both teams fight it out between the 30 yard lines. When the half finally ended, the Yellowjackets still held their 7-0 lead.

William Chrisman, after changing jerseys for the second half, looked like a different team as they scored two third quarter touchdowns to take a 12-7 lead. Chrisman scored again in the fourth to make the score 18-7.

With this loss, Center's season record ended with six wins, three losses and one tie. Considering all the injuries for the year, this proved to be a very respectable mark.



OUR

FIGHTING

YELLOW JACKETS



ROW ONE: R. Hoverstock, A. Katzberg, J. Lanoue, D. Snoddy, R. Reese, R. Huber, B. Albright, C. Mayfield, C. Funk, B. Minshall, S. Sanders, W. Huber, B. Hunsperger, T. Welterman, D. Coleman, J. Isley, D. Coleman, Coach Duane Unruh. ROW TWO: G. Bingham, R. Abernethy, J. Houtz, W. Hines, J. Goosetree, R. Williams, R. Hodgens, D. Minshall, D. Baker, P. Heath, R. Treasure, M. Swartz,

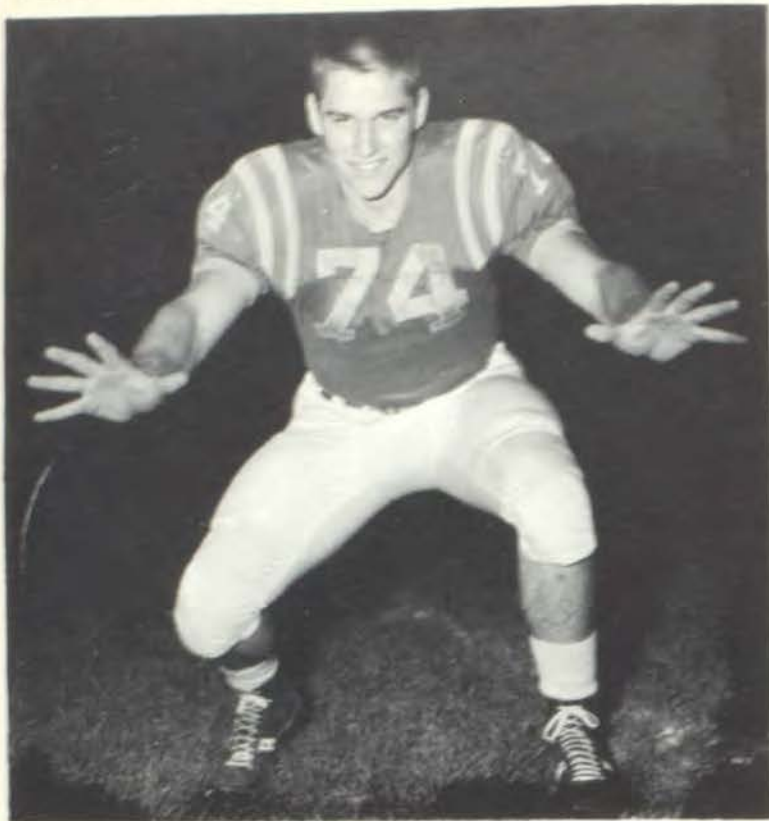
B. Lyman, J. Kittel, B. Harrison, M. Rimel, E. Banahan, R. Drewey, Coach Bob Smith. ROW THREE: J. Rodriguez, T. Callis, T. Murphy, D. Yost, M. Travis, T. Foraker, T. Hastings, S. Smith, A. Hale, D. Bowers, R. Campbell, B. Greenstreet, G. Mallot, T. Garrison, W. Handy, J. Gentile, J. Shover, T. Franklin, J. Weaver, Coach Max Hayes.



Coaches Hayes, Unruh, and Smith.



STARTING LINEUP: Fullback, B. Minshall; Quarterback, A. Katzberg; R. Half, J. Isley; L. Half, R. Abernethy; R. End, C. Funk; L. End, B. Albright; R. Tackle, R. Reese; L. Tackle, R. Huber; R. Guard, D. Coleman; L. Guard, D. Coleman; Center, D. Snoddy.



Bob Hunsperger
Senior Tackle



Conley Funk

*Team Captain, Senior End, 2nd Team
All Conference, Honorable Mention:
All-District.*

FOOTBALL

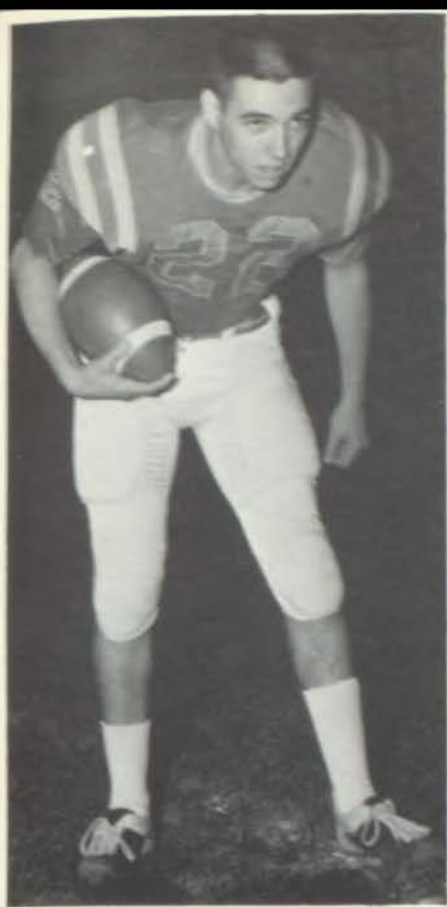
H E R O E S



Alan Katzberg
Junior Quarterback



Dan Rankin
Senior Quarterback



Jamie Lanoue
Junior Halfback



Bill Minshall
Senior Fullback, 2nd Team All Conference Honorable Mention: All District



Rick Abernathy
Junior Halfback Honorable Mention: All Conference



Wayne Huber
Senior End



Bart Albright
Senior End



Jack Isley
Senior Halfback



Don Coleman
Senior Guard



Roger Reese

Junior Tackle, Honorable Mention: All-Conference, All-District.



Dave Coleman
Senior End



Don Snoddy
Junior Center



Carl Mayfield
Senior Guard



Tom Welterman
Senior Center



Jack Mankin
Junior Guard



Steve Sanders
Senior Tackle



Ron Huber
Junior Tackle

H O M E C O M I N G E V E N T S



Festival of Stars

Miss Donna Triozzi, a junior, was chosen Homecoming queen of 1962 by the football squad. The queen's identity was kept a secret until the halftime of the football game between Parkhill and Center, at which time the queen was announced and crowned along with her attendants.

Despite a hard-fought game, Parkhill defeated Center 13-7. Following the game was the traditional Homecoming dance with the theme, Festival of Stars.



HOMECOMING

QUEEN



MISS DONNA TRIOZZI



Miss Barbara Weed
Escorted by
Fred Phares

Miss Vickie Christensen
Escorted by
George Ballew

A
T
T
E
N
D
A
N
T
S

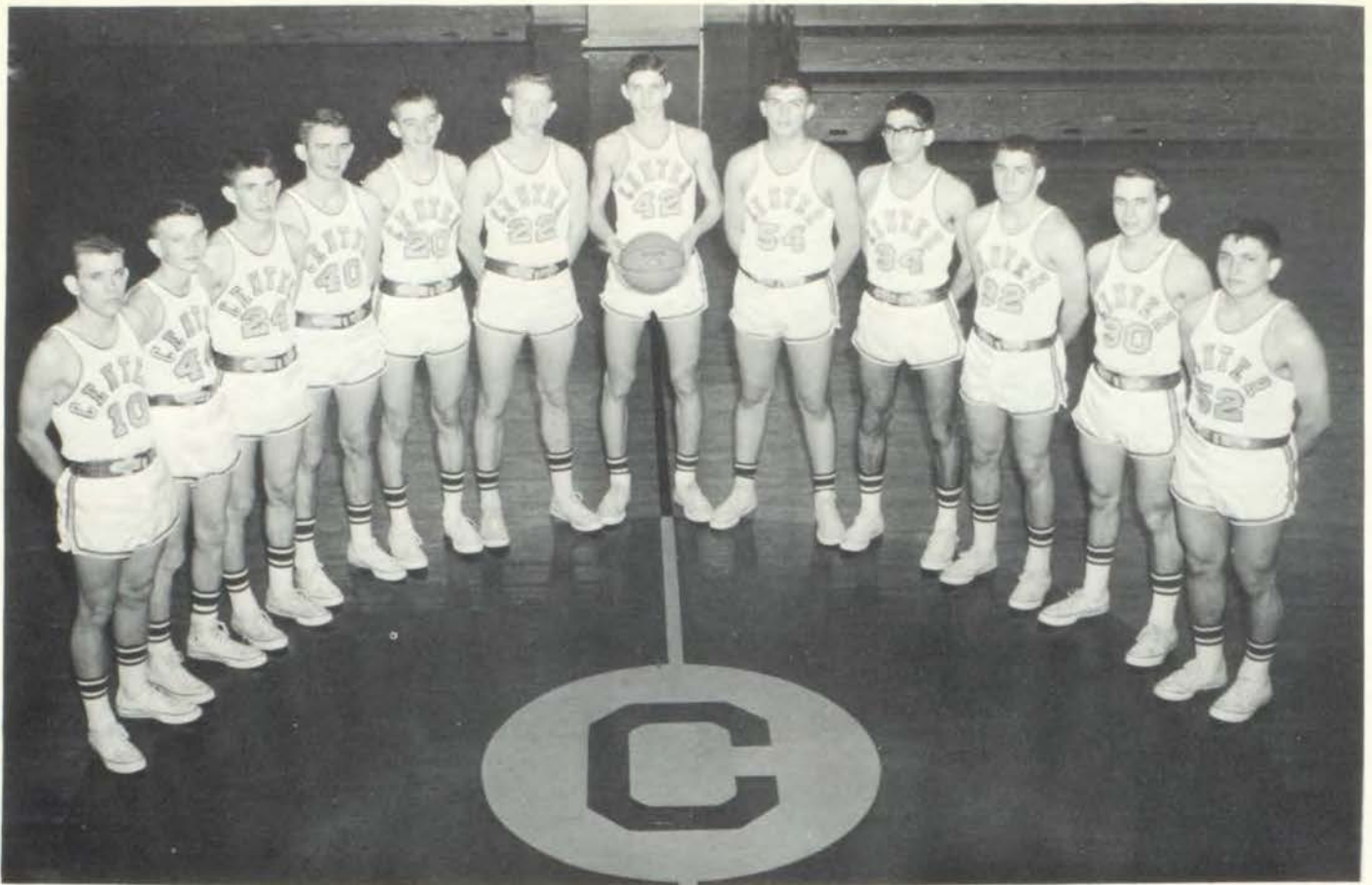


Miss Angie Ellis
Escorted by
Rusty Howell



Miss Sharon Flickinger
Escorted by
Dennis Pangborn





Left to Right, Center Varsity Players are: Larry Bredehoeft, Doug Wills, Leroy Mendenhall, Vernon Bailey, Gary Ernst, John Munns, Bruce Sloan, Don Boswell, Dean Miller, Rick Abernethy, John Biggs, and Alan Katzberg.

HOLD IT!

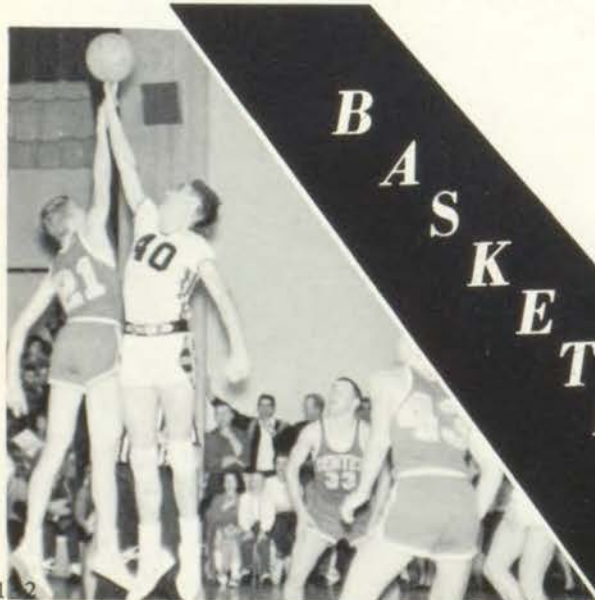
Don't turn that page yet! The basketball season wasn't THAT bad!

Suppose we did finish in fifth place with a 7-7 league record. Suppose we did lose five games within the matter of seconds. It was still one of the most exciting seasons in Yellowjacket cage history.

No, we're not trying to be funny. It doesn't do any good to sugarcoat a losing season. There were some thrills and surprises and a new school scoring record (86 points in one game) to be remembered for a long time. Sophomore Bruce Sloan's 37 points against Liberty is the second highest point total to be scored by a Yellowjacket. Gary Ernst was elected honorary captain of the team. His hustle and strong desire to play ball was characteristic of the members of this year's squad.

The Yellowjackets may have had their wings clipped a few times this season, but being young they should have more sting in the seasons to follow.

By
Coach Max Hayes



BASKETBALL



Leroy Mendenhall
Jr. Guard



Don Boswell
Jr. Forward



Ricky Abernethy
Jr. Guard

7109 LBS VARSITY BASKETBALL HEROES



Gary Ernst
Sr. Forward



Alan Katzberg
Jr. Guard



Bruce Sloan
Soph. Center



Dean Miller
Jr. Forward



Larry Bredehoeft
Jr. Guard



Vernon Bailey
Jr. Forward



Doug Wills
Jr. Guard

VARSIITY BASKETBALL HEROES



John Munns
Sr. Center



Mike O'Shea
Soph. Forward



John Biggs
Sr. Guard



Center B-Team Players

Front Row, Left to Right: Dave Looney, Jim McMurtry, Dennis O'dell, Bob Masterson, Bill Osthoff, Mike Rimel, Victor Wade, manager. Back Row: Doug Wills, Leroy Mendenhall, Dean Miller, Ron Judd, Marshall Limpic, Mike O'Shea, Larry Bredehoeft, and Coach Duane Unruh.



Center Sophomore Team Players

Front Row, Left to Right: Brian Greenstreet, Bill Osthoff, Dean Minshall, Greg Musselman, John Rodriguez, manager. Back Row: Dave Looney, Bob Masterson, Jim McMurtry, Dennis O'dell, Mike Rimel, and Coach Bob Smith.



Coach Bob Smith, Coach Max Hayes, Head Coach; Coach Duane Unruh.

VARSITY RECORD

	Center	Opponent
Blue Springs	40	26
Southeast	38	56
William Chrisman	50	64
Fort Osage	69	59
Park Hill	67	55
Ruskin	58	56
Raytown South	65	48
Grandview	48	50
Lee's Summit	43	75
Blue Springs	56	34
North Kansas City	62	63
Liberty	66	72
Fort Osage	83	63
Park Hill	56	58
Ruskin	49	60
Grandview	86	75
Lee's Summit	57	73
Liberty	76	77

ST. JOSEPH TOURNEY

	Center	Opponent
Benton of St. Joseph	46	44
Lee's Summit	40	54



Managers Richard Haverstock, Victor Wade, and John Rodriguez.

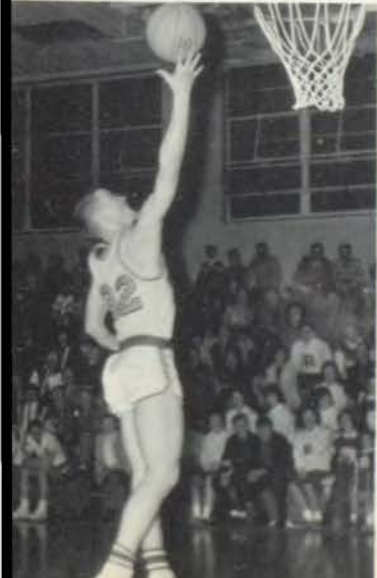
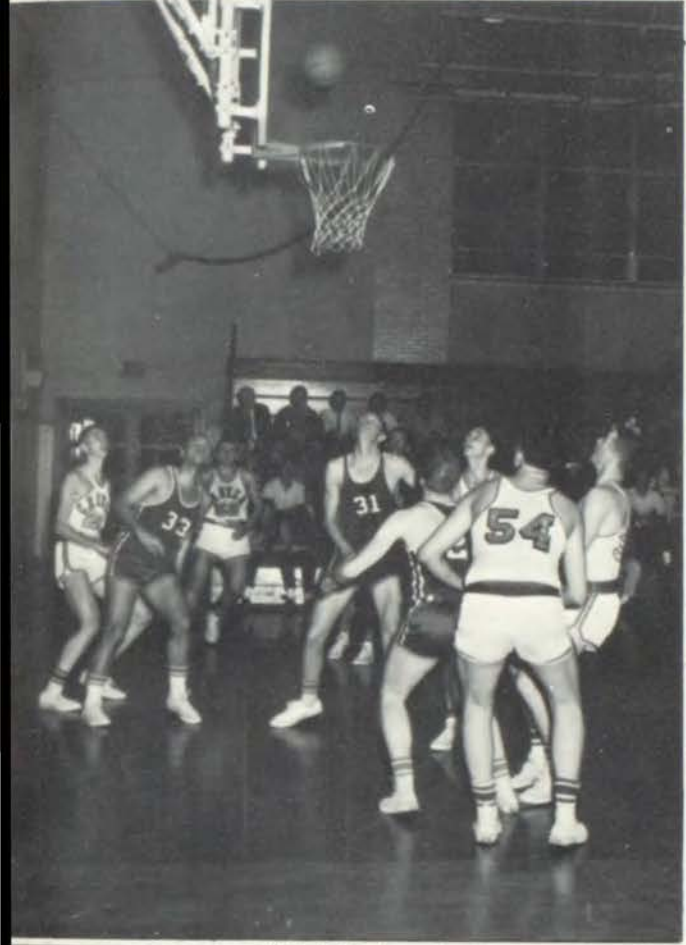
Wm. JEWELL TOURNEY

	Center	Opponent
Raytown	38	53
LaFayette	36	45

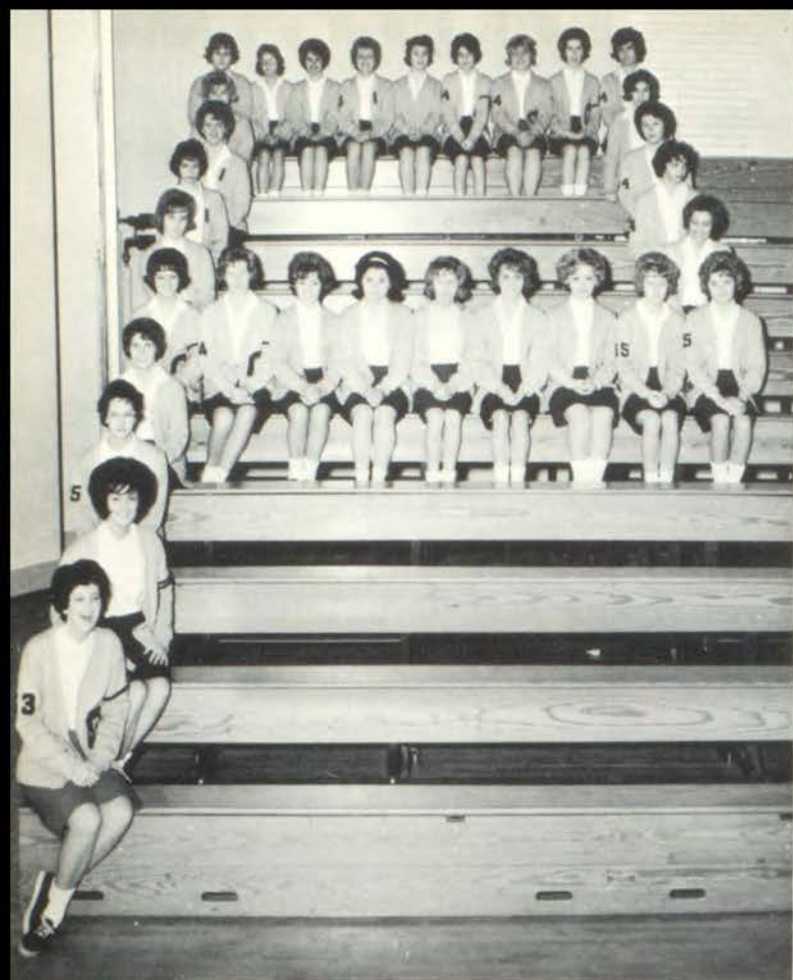
CENTER TOURNEY

Center	69	Kemper	54
Grandview	43	William Chrisman	62
Kemper	52	Grandview	51
Center	59	William Chrisman	69





PEP



SPONSORS



Mrs. Winifred Sutor

Miss Sue Holt

CLUB

OFFICERS



Melissa Edgerton
President

Paulette Stevens
Vice-President

Sue Thompson
Secretary

Sandy Stevens
Treasurer

Betty Criscuolo
Designer



THE VARSITY

CHEERLEADERS



Row One: Vickie Christensen, Captain; Marilyn Stevens, Carol Miller. *Row Two:* Angie Ellis, Carol Remington, Tonya Gehrs.

This peppy group of girls started their vigorous practicing early in the summer. They attended the National Cheerleaders Association Clinic during the week of July 15-21 at the University of Oklahoma. In competition with over 500 other cheerleaders from the Midwest, they brought home first and second place ratings. They were judged on the basis of originality, personality, precision, and pep.

During the school year these enthusiastic girls promoted school spirit to a high degree by strongly backing the team. They presented effective pep rallies throughout the football, basketball and track season.



Angie Ellis



Vickie Christensen
Captain



Marilyn Stevens

Carol Remington



Carol Miller



Tonya Gehrs



B TEAM CHEERLEADERS



The B-Team cheerleaders — Candy Miles, Toby Mathews, Sandie Shapiro, Captain; Donna Triozzi, Kathy Kienberger, and Martha Green — engaged in strenuous practice at the crack of dawn throughout the summer. They led the student body in cheers during the basketball and track season.



Candy Miles



Sandie Shapiro, *Captain*



Kathy Kienberger



Donna Triozzi



Toby Mathews



First Row: Tom Welterman, Don Coleman, Jack Isley, Bart Albright, Coach Robert Smith, Bill Minshall, Dave Coleman, Berton Miller, Glen Yager, Bob Hunsperger. *Second Row:* Manager George Bingham, Ray Moot, Jamie Lanoue, Paul Smith,

Jack Mankin, Garrett Hunsperger, Lawrence Pummill, Eugene Banahan, Dennis Baker, Dick Hall, Rusty Clark, Carl Mayfield. *Third Row:* Jim King, Joel Ray, Steve Smith, Bill Lyman, Alan Buford, Bill Frey, Jack Bliven, Bruce Helmick, Steve Bates.

**I
N
D
O
O
R
T
R
A
C
K**

Coach Robert Smith smiles happily as he looks forward to a season resulting in many new records.



SHOT-PUTTERS: Glen Yager, Tom Welterman, Joel Ray and Bob Hunsperger.



POLE VAULTER: Jack Mankin.



COMING OUT OF THE BLOCKS: Jim King.



Dennis Baker and Bill Minshall practice on a flight of hurdles.



MILERS: Bill Fry, Dick Hall and Bruce Helmich.

EIGHT LAP RELAY RUNNERS: Jamie Lanoue, Dave Coleman, Eugene Banahan and Jack Isley.



HALF-MILERS: Steve Bates, Paul Smith and Bart Albright.



MEMBERS OF THE MILE RELAY: Lawrence Pummill, Berton Miller, Jack Isley and Eugene Banahan.



Janet Lindeman



Kathy Kienberger



Joyce Reckart



Mike McAuley

“Senior”



Ed Tiemann



Leslie Barnes



Barbara Bass



Gloria Himelstein



Betty Criscuolo



Linda Davin



Marilyn Stevens



Sherrie Clark



Peggy Cade



Gary Sloan



Joel Martin



Paulette Stevens



Beth Stolov



John Munns



Barbara Warren



Vickie Christensen

Snaps"



Claude Lafler



Donna Schupp



Pat Stone



Bill Minshall



Dave Peterson



Melissa Edgerton



Sande Keilhack



Zsuzsi Adler



Sue Thompson



Nata Blum



Carol Remington



Judy Siemon



CHERYL RING

IN MEMORIAM

Cheryl Ring's gentle, unassuming manner and kindness generated the friendly atmosphere she helped to create for those around her, assuring a high place for Cheryl in the hearts of her classmates and many friends at Center.

IN MEMORIAM

Mrs. Hazel Mae Swetnam, after having dedicated thirty-one years to the teaching profession and the direction of young people, passed away January 4, 1963.

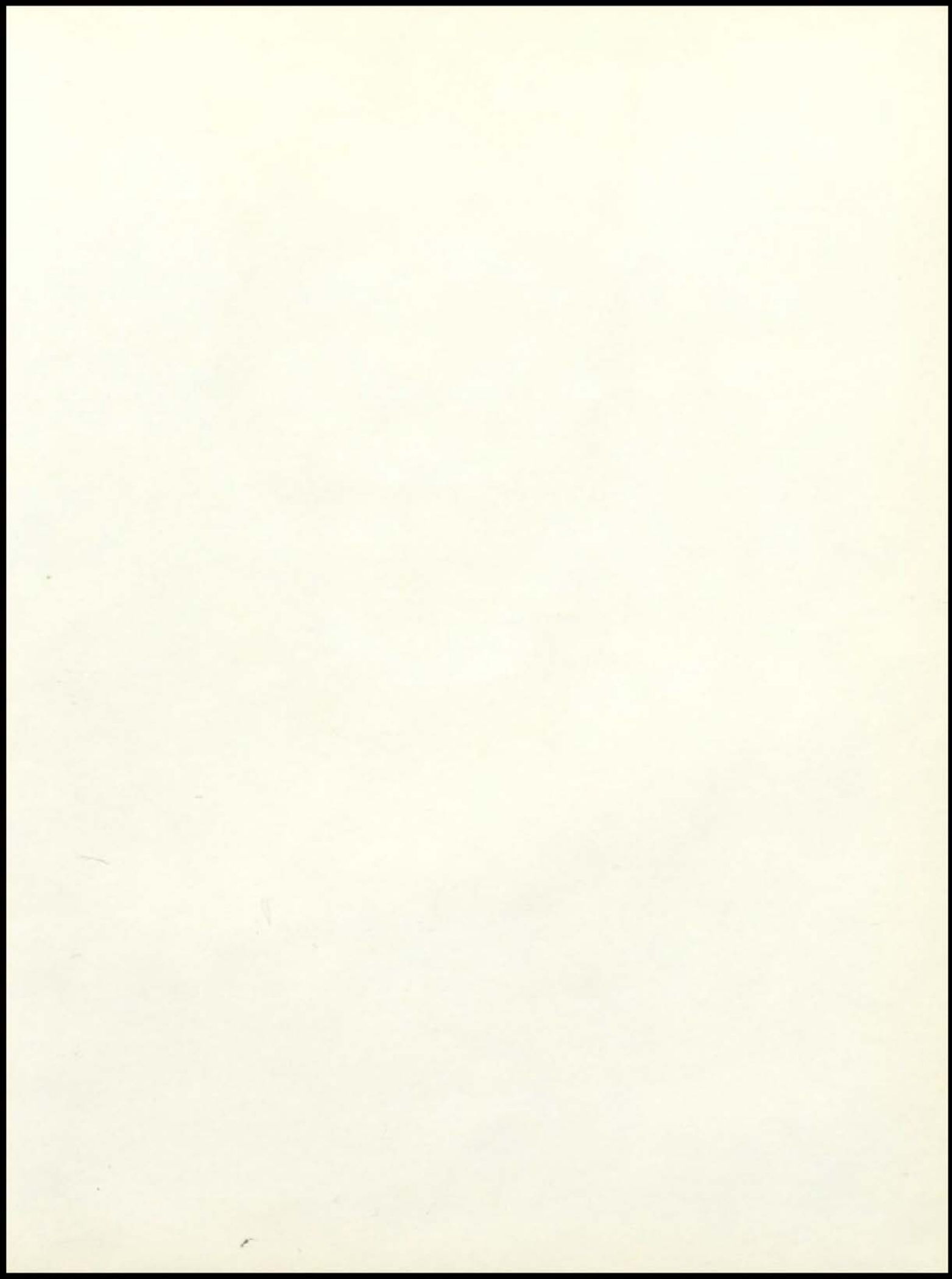
Her life touched many lives — co-workers, patrons, students in the seventeen years she spent here. She gave loyal service to the profession and to the school as instructor of social studies. Her particular assignment for years was sponsorship of the Junior class, with its junior-senior prom and multitude of other activities.

On a national level, Mrs. Swetnam was honored in her professional area while at Center when she was selected to serve as president of the National Council for Social Studies.

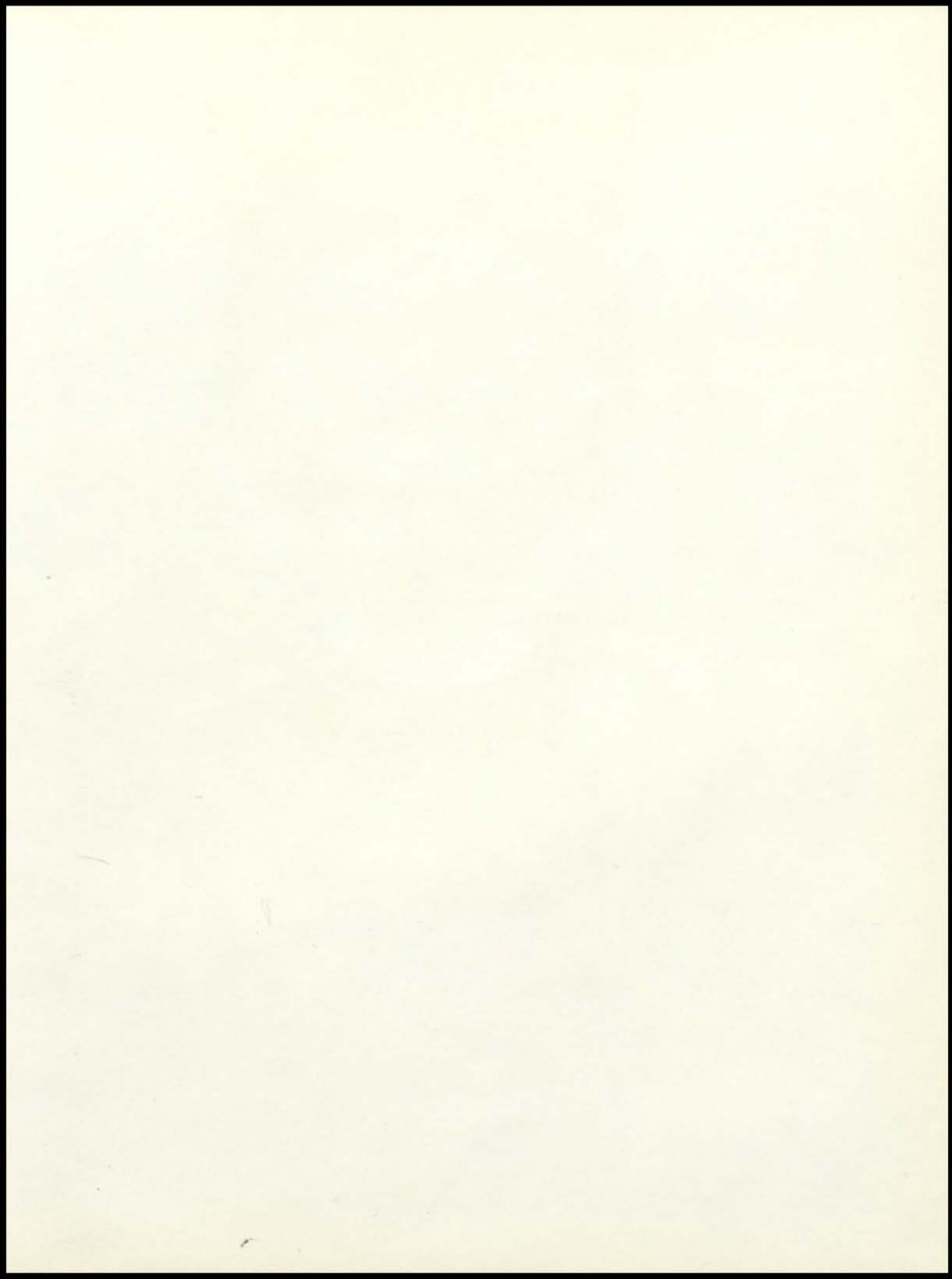
Mrs. Swetnam will long be remembered for her true interest in every phase of school life, her genuine affection for her students, and her friendliness to everyone with whom she worked.



MRS. HAZEL SWETNAM







Carol,
you're a sweet
kind with a lot
of pep. Stay cute
and smart!
Love Jack

Carol,
You're a real nut
and we've had a
blast this year esp
in C. Good luck
always and I'll
see you next year in
Geometry. Love ya,
Jeff

We, Geometry
has been a blast
this year. Hope we
pass. Best of luck
next year and always.
Your friend,
Jeff

Carol,
It has been fun
knowing you
and having you
your a cut
personality to
match. Good
luck in what
ever you do.
Love ya
Dennis

Dear Carol,
My old Geometry
buddy — this year has
been a real blast — especially think
since I've known you — just think
next year you won't be a lowly Scott —
but a lowly Junior — and I'll be a
big SENIOR — seriously, I've really enjoyed
having classes with you and I hope that
during the summer our friendship can
continue to grow — your great personality
you charm, and your vivaciousness will
send you far, I'm sure — Good luck
always — Love ya,
Barb
"64"

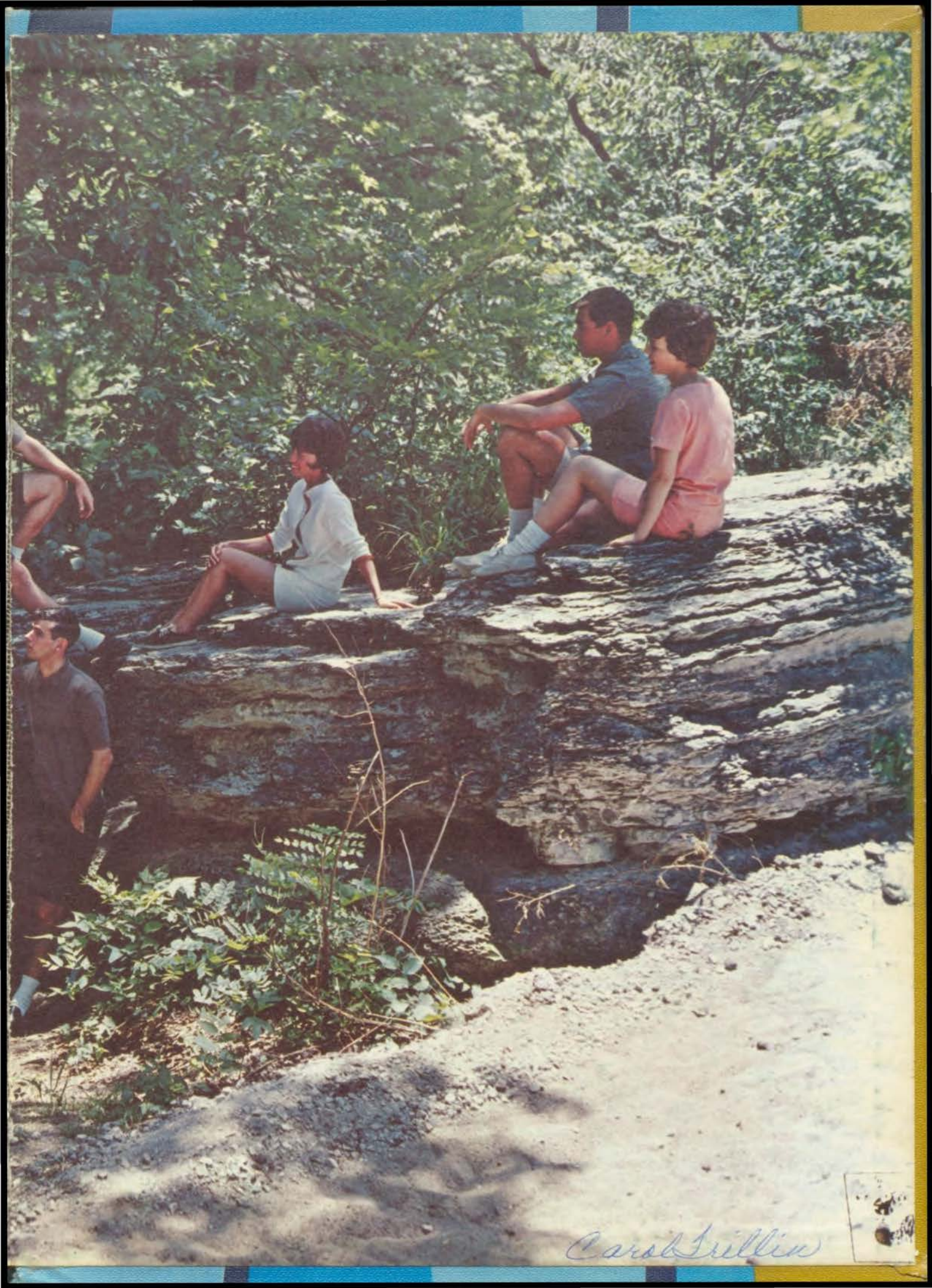


INTER-COLLEGIATE PRESS
Kansas City — Winnipeg
Publishers — Manufacturers
Yearbooks — Yearbook Covers
Diplomas — Graduation Announcements
USA

Good
well see
you next
year and
love and
summer
love ya
Barb
"64"

lots of love
hope to see
you in
next year
love ya
Barb
"64"





Carol Sullivan



Custom Covers by
INTER COLLEGIATE PRESS