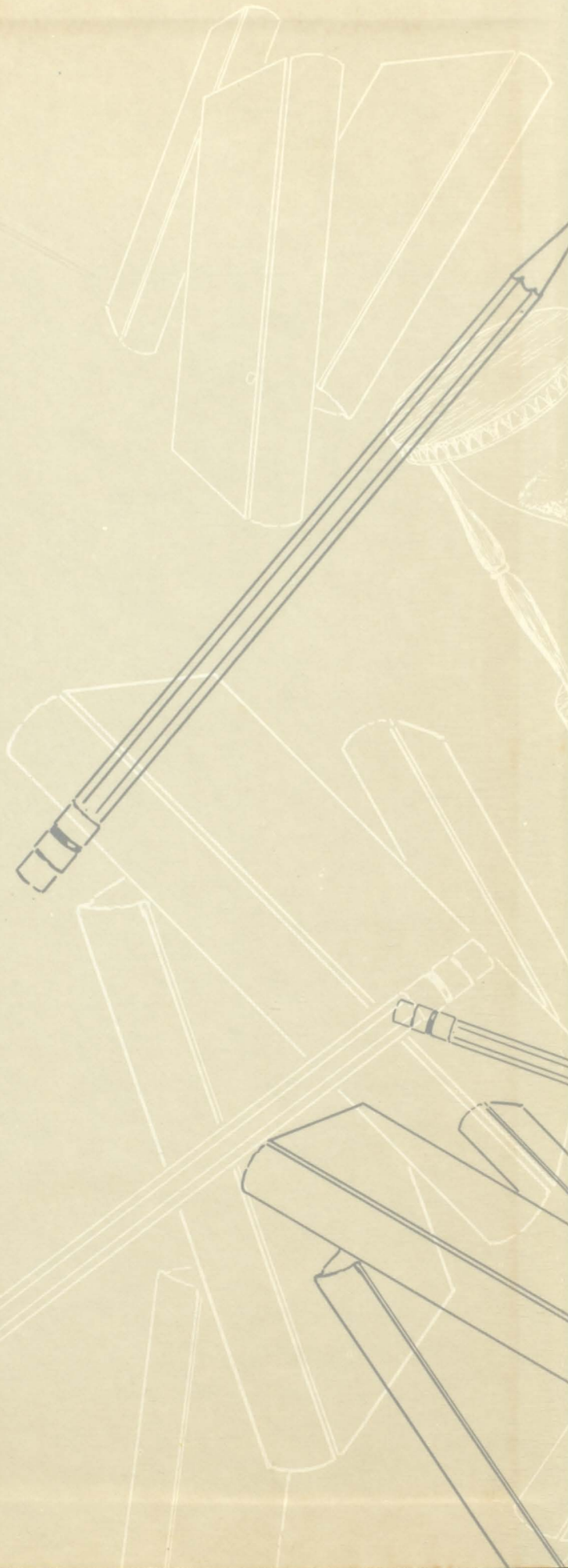
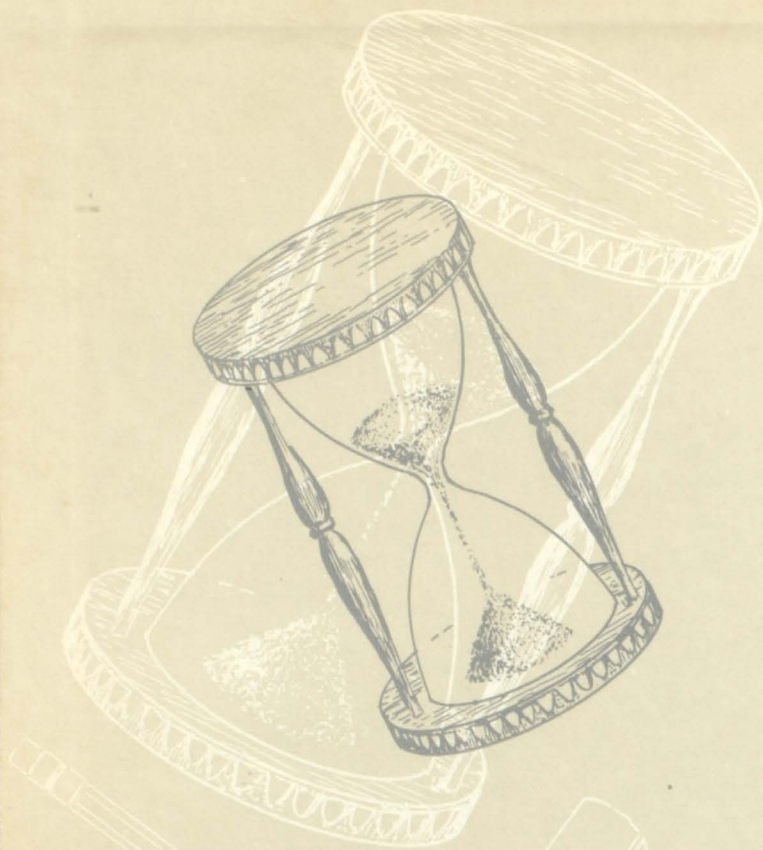


*Lillislog*

*1900*









LIBRARY

1911

Printed by the University

of Kansas

Lawrence, Kansas



# LILLISLOG

Vol. XXVI, 1960

Published by the Senior Class  
of  
Lillis High School  
Kansas City, Missouri



## *Dedication*

To each priest, sister and lay teacher who has ever taught at Lillis, we, the class of 1960 dedicate this book. Without them, Lillis would not be what it is today. Each in his own way, has been a vital part of Lillis—each has left his footprint and has had a part in molding the lives and attitudes of the students.





**Bishop John P. Cody**

**Diocese of Kansas City — St. Joseph**



On his first official visit to Lillis, Bishop Cody offered the Holy Sacrament of the Mass. Here is a perfect representation of his role as Shepherd of the Flock.





Let's walk in the footsteps of those  
who have gone before us as we walk  
through this book reliving 1959-1960.

## *Table of Contents*

*Faculty*

*Senior Class*

*Activities*

*Classes*

*Sports*



# Presenting the Faculty...

Sister M. Fabiola, O.S.B. Principal

Sister Mary Brian O.S.B. . . . Latin, English, LILLISTRATOR

world history, music . . . Sister Clement Marie, O.S.B.

Sister M. Constance O.S.B. . . . biology

Spanish . . . Sister Mary Daniel O.S.B.

Sister M. Dolores O.S.B. . . . typing, shorthand

typing, bookkeeping . . . Sister M. Elise, O.S.B.

Sister M. Ethelburg, O.S.B. . . . chemistry

home economics, English, LILLIS LOG . . . Sister Mary Felix, O.S.B.

Sister M. Gratia, O.S.B. . . . art, artcrafts

librarian, French, Latin . . . Sister Hedegarde, O.S.B.

Sister Mary Joyce, O.S.B. . . . mathematics, physics ;

band, algebra . . . Sister Noeene, O.S.B.

Sister Paulette, O.S.B. . . . English

cafeteria . . . Sister M. Prima, O.S.B.

Sister M. Stephen, O.S.B. . . . printing

cafeteria . . . Sister M. Vitalis O.S.B.

Sister Mary William, O.S.B. . . . speech, English





Left to Right, Reverend Roger Miller, Reverend William Von Arx, Reverend Bertrend Morahan, O. P., Reverend Harry Berendzen, Reverend Kieran Mc-Inerney, O. S. B., and Reverend John Clark, C.M.

The above priests have contributed greatly to the religious knowledge which has been gained by the Lillis students.

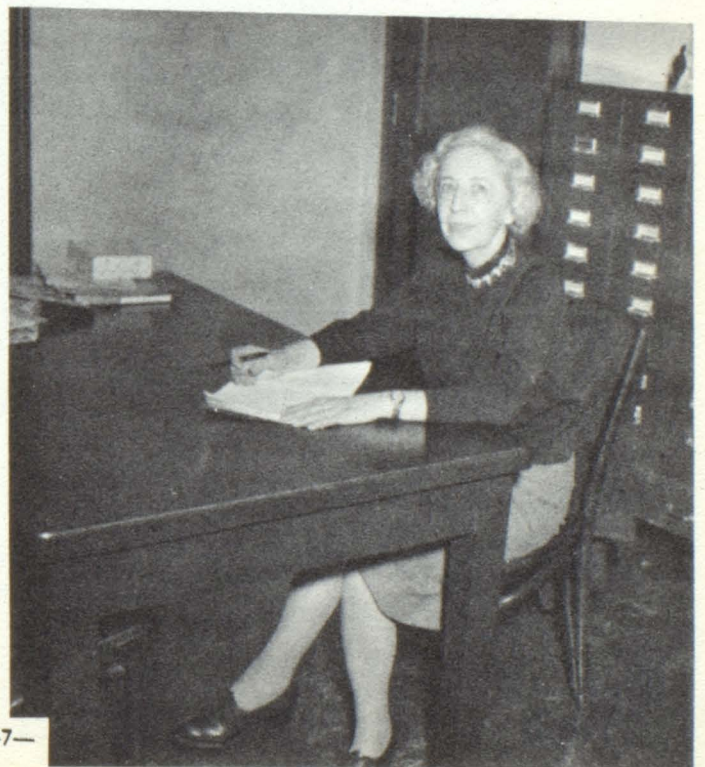


Mrs. Green and Miss Kennedy exchange presents in the true Christmas spirit. Mrs. Robert Green is instructor in girls' physical education and health classes, and Miss Dorothy Kennedy is a teacher in the social sciences.





Coach John Schmiedeler, Coach Joseph Mintner, and Mr. Donald Ritchie pause after a hard day's work. Coach Schmiedeler is head basketball coach, while Coach Mintner is in charge of football. Mr. Ritchie, who teaches history, joined the Lillis faculty this year.



Mrs. Leslie, school nurse, is always kept busy, looking after the health of Lillis students.

# *In Memoriam*



Betty Rutledge  
January 23, 1960

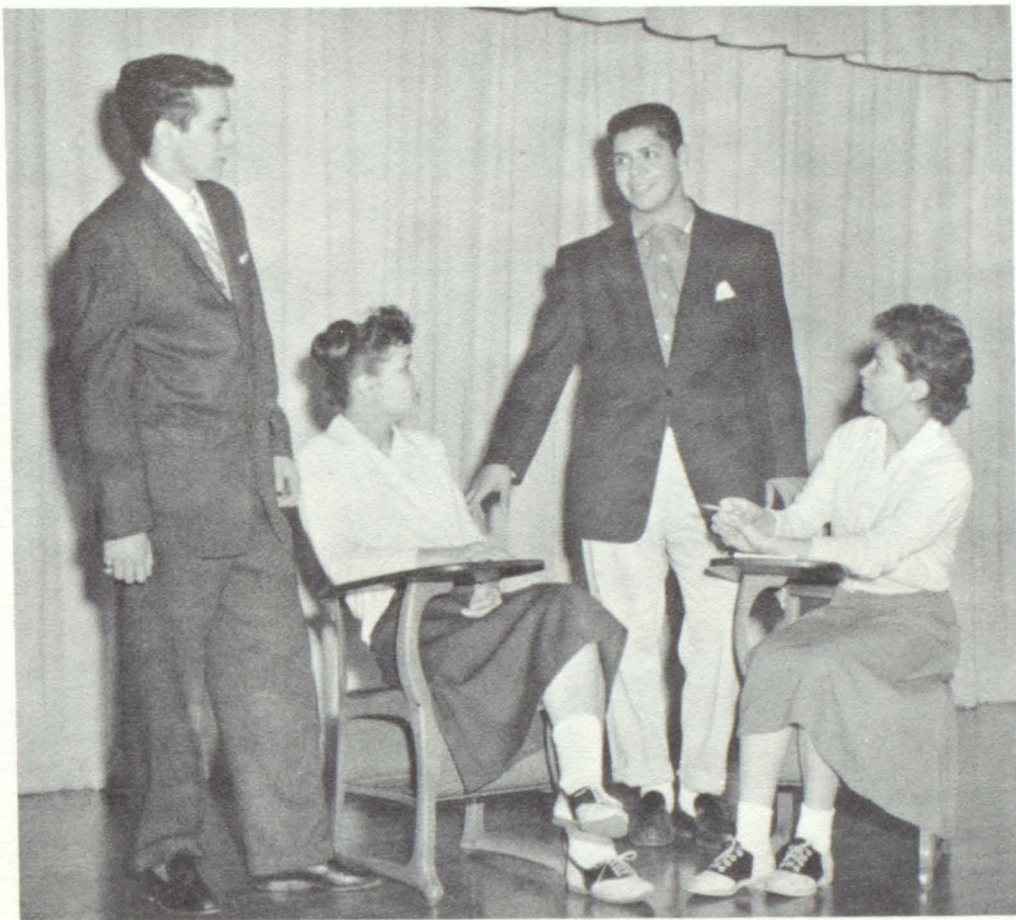
*May she rest in peace!*



# Student Council

Each homeroom and organized activity calls for opportunities of student leadership. Homerooms each have leaders and co-leaders; clubs, the usual roster of officers. The Student Council consists of the homeroom leaders, officers of the Senior Class, the president of each of the clubs, and the editors of the student publications, THE LILLISTRATOR and LILLISLOG.

To keep a position of student leadership and one's place on the Student Council an M. average is required.



A lot of planning goes into each Student Council meeting. In this pre-session conference, Tony Brown, secretary; Mary Jo Myers, treasurer; Mike Juarez, vice-president; and Pat Ryan, president, are making plans for a student government day.

SENIOR CLASS OFFICERS

*Student*



M. J. Meyers,



S. Salmon



T. Brown



M. Mulloy

SENIORS

200



L. Niemeyer



J. Hayes

201



S. Salmon



R. La Sala

202



S. S. Peacher

203



M. Mulloy

JUNIORS

306



V. Richter



E. Harte  
404

304



B. Morris



T. Scanlon

302



E. Burch  
406



L. Laut

SOPHOMORES



J. Purdy



S. Long



N. Ronan



B. O'Sullivan

FRESHMEN

401



L. Sweeney



M. Ganadan

403



A. Schnepf



S. Holmes

402



T. Ventola



F. Supancic



# Council

## SODALITY



S. Overman



P. Ryan



M. J. Meyers



C. Haefling

## LILLIS LIBS



M. A. Cook



C. Beebe



P. Grunden



J. Goff

## BAND



M. Juarez



C. Haefling



S. Bedworth

## L-CLUB



T. Brown



S. Salmon



J. McMahon



M. Redmond

## PEP CLUB



R. Prevost



S. Overman



J. Maher

## GLEE



D. Oelklaus

## LILLISTRATOR



M. O'Sullivan

## LILLIS LOG



J. Hueser



L. Walsh

## SEMINAR



P. Ryan



C. Haefling.





Seniors bow out ....





**DONNA ANDERSON**  
Sodality 1,2; Pep Club 2,3,4.  
Ambition: Nurse.



**PATRICIA BACHMAN**  
Sodality 1,2,3,4; Pep Club 2,3,4; Lillistrator 3,4; Majorettes 1,2,3,4.  
Ambition: Undecided.



**PATRICK BAKER**  
Sodality 1,2,3; L-Club 3,4; Camera Club 1; Football 1,2,3,4.  
Ambition: Navy.



**SHARON BEDSWORTH**  
Sodality 1,2,3,4; Pep Club 3,4; Lillistrator 4; Band 2,3,4; Secretary 4; Drum and Bugle Corp 1.  
Ambition: College.



**CATHERINE BEEBE**  
Sodality 1,2,3,4; Pep Club 2,3,4; Seminar 3; Lillislog Business Manager 4; Lillis Libs 1,2,3,4; Vice-president 4; Senior Play.  
Ambition: College.



**CAROL BELLANTE**  
Sodality 1; Pep Club 2,3,4.  
Ambition: Marriage.



**DIANE BILLITER**  
Sodality 1,2; Pep Lillistrator 3,4; Co-editor 4.  
Ambition: Teacher.

ANTHONY BISACCA

Football 1.

Ambition: Air Force, then farmer.



REGINA BOYLE

Sodality 1; Pep Club 2,3,4; Art Key Award 3; Senior Play.

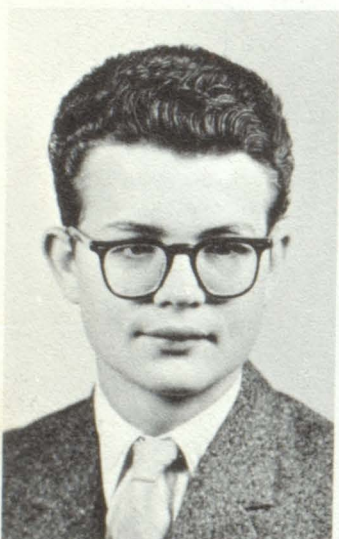
Ambition: Air Line Hostess.



JANET BLAKEY

Pep Club 3,4.

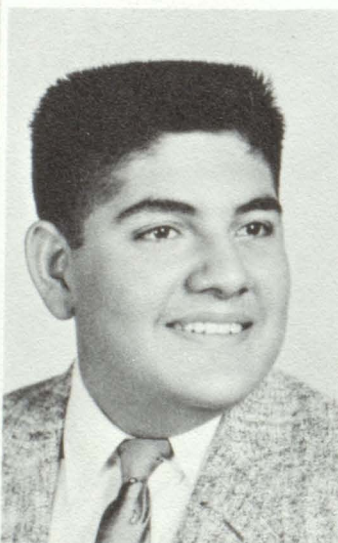
Ambition: Marriage.



FRANCIS BRADY

Transfer from Green City High School 4.

Ambition: Foreign Correspondent.



FRED BRISENO

Transfer from De La Salle 3.

Ambition: Marriage.

JOSEPH BROWN

Sodality 1; L-Club 3; Basketball 1,2,3,4; Track 1,2,3,4.

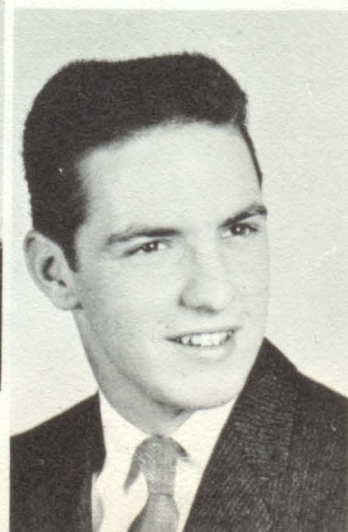
Ambition: To live a happy life.



ANTHONY BROWN

L-Club 3,4; Football 1,2,3,4; Basketball 1,2; Track 1,2,3,4.

Ambition: Undecided.





ROGER CARTER

Sodality 1; Track 1,2.

Ambition: Business Administration.



FRANCES CABRINI

Pep Club 2,3,4.

Ambition: WAVE.



EILEEN BRYANT

Sodality 1,2,3,4; Pep Club 2, 3,4; Seminar 3,4; Lillis Libs 1,2; NCMEA 3,4; Science Fair 1; Senior Play.

Ambition: Teacher.

NOLAN DAVIS

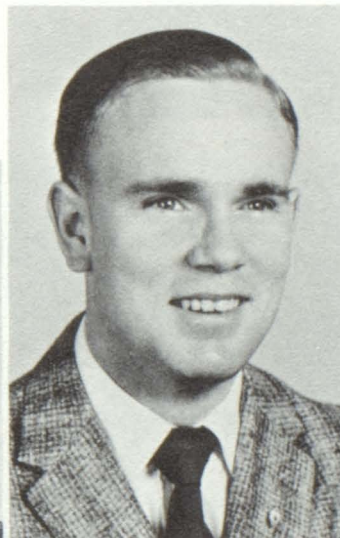
Seminar 3,4; National Honor Society; Band 3; Debate 3; Kansas University Medical Center Seminar 3.

Ambition: To conquer myself.

THOMAS DORRIAN

Homeroom Leader 1,2,3,4; L-Club 3,4; Football 3; Basketball 1,2.

Ambition: Undecided.



JOHN CORNWELL

Ambition: Doctor or Laboratory Technician.



MARY ANN COOK

Sodality 1,2,3; Pep Club 2,3,4; Seminar 3; Lillistrator 4; Lillis Libs 1,2,3,4; National Honor Society; Homeroom Leader 2; NCMEA 3,4; Senior Play.

Ambition: Nurse.



ANTHONY FOWLER

Band 2,3,4; Drum and Bugle Corp 1.

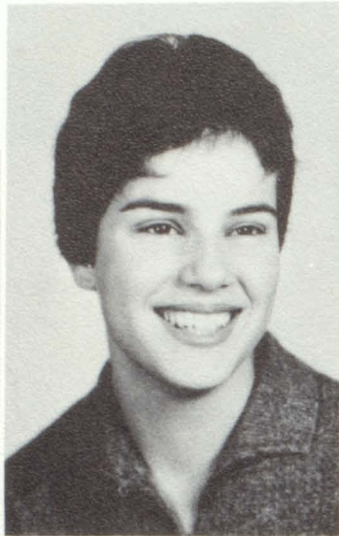
Ambition: To drive a big car.



PATRICIA FETTERS

Sodality 1,2,3; Pep Club 2,3,4; Treasurer 3; President 4; Judith Play 3; Homecoming Attendant 3,4; Senior Play.

Ambition: Medical technician.



PATRICIA FARRIS

Sodality 1,2; Pep Club 2,3,4; Lillistrator 4; Lillis Libs 2; Homeroom Co-leader 2.

Ambition: X-ray technician.



LINDA FARRELL

Sodality 1,2,3,4; Pep Club 2,3,4; Senior Play.

Ambition: College.

ROSALIE GARCIA

Sodality 1,2; Pep Club 2,3,4; Lillistrator 4.

Ambition: Airline Hostess.



CHRISTINE GARCIA

Sodality 1,2,3; Pep Club 4; Lillis Libs 4.

Ambition: Beautician or Secretary.

RUDY GARCIA

Sodality 1,2; Glee 3; Speech Contest 2; Homeroom Leader 4.

Ambition: Undecided.



JULIA FRANZEN

Sodality 2,3,4; Pep Club 2,3,4; Lillis Libs 4; Majorettes 4; Varsity sub-cheerleader 4; Senior Play.

Ambition: Teacher.





**PATRICIA GIBBONS**  
Sodality 1,2,3,4; Pep Club 4;  
Senior Play.  
Ambition: Medical  
Technologist.



**DOLORES GLYNN**  
Sodality 2,3,4; Pep Club 2,3,4;  
Representative 4; Lillis Libs 1,  
2,3,4; Lillistrator 4; Business  
and Circulation 4.  
Ambition: To be a success.

**PAMELA ANNE GOADE**  
Pep Club 2,3,4; Band 1; Speech  
Contest 1.  
AMBITION: Marriage.



**CARMEN GONZALES**  
Sodality 1; Pep Club 3,4; Rep-  
resentative 4; Senior Play 4.  
Ambition: Airline Hostess.



**TOM GORMAN**  
Glee 3,4; Speech Contest 2;  
Transfer student from Luckey  
High School, Manhattan, Kan-  
sas 2; Senior Play 4.  
Ambition: Civil Engineer.



**JANICE GOSSEY**  
Sodality 1,2,3; Pep Club 2,3,4.  
Ambition: Secretary.

**KATHLEEN GREGORY**  
Sodality 1,2,3,4; Pep Club 2,3,  
4; Lillis Libs 2,3,4; Science  
Fair 2.  
Ambition: Nurse.



**CHARLES HAEFLING**  
Sodality 1,2,3,4; Treasurer 2,3,  
4; Debate 3; Seminar 3,4; Band  
1,2,3,4; NCMEA 3,4; Religion  
Contest 1,2; Speech Contest 3;  
National Honor Society.  
Ambition: Mathematician.

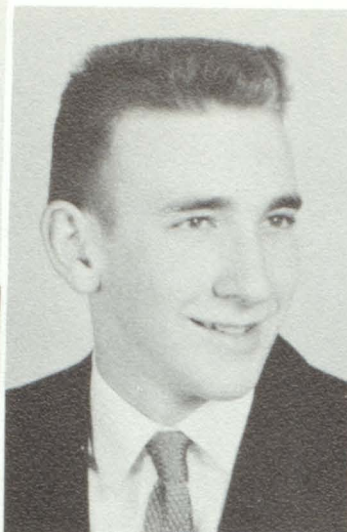




DAVETTA HARDY  
Sodality 1,2,3,4; Pep Club 2,3,4.  
Ambition: Nurse.



CURLEY HAINES  
Sodality 1,2,3,4; Pep Club 2,3,4; Camera Club 1; Senior Play.  
Ambition: Travel and see the world.



DENNIS HAKE  
L-Club 4; Track 1; Head Manager of Track Team 1,2,3,4.  
Ambition: Printer.



JOEL HURTADO  
Transfer from Boys' Town High, Boys' Town, Nebraska 4.  
Ambition: Barber.



JOYCE HUESER  
Sodality 1,2,3,4; Pep Club 2,3,4; Lillis Libs 1,2,3,4; Lillis Log Editor 4; Seminar 3,4; Home-room Leader 3; Religion Contest, 2nd place, 3.  
Ambition: College.

JUDY HAYES  
Sodality 1,2; Pep Club 2,3,4; Lillis Libs 1,2,3,4; Co-Leader 4.  
Ambition: Secretary.



EMERY HARMON  
Sodality 1,2,3,4; School Photographer 4; Seminar 3,4; National Honor Society; Kansas University Medical Center Seminar 3; Religion Contest 3; Camera Club 1.  
Ambition: College.





MICHAEL JUAREZ

Band President 4; Vice-President Student Council 4; Co-leader 3; L-Club 3,4; Football 1,2,3,4; Captain, 4; All-Star 2, 3,4; Track 2,3,4; Basketball 1,4.

Ambition: Professional football.



CAROL KAISER

Pep Club 4; Senior Play; Transfer from Center High 3.

Ambition: To be a success.



PATRICIA KANDBINDER

Sodality 1,2,3,4; Pep Club 2,3, 4; Pep Club Representative 3; Lillistrator 4; Speech Contest 3rd place, 1; Senior Play.

Ambition: Radiologist.

VIRGINIA KNIEB

Sodality 1; Pep Club 2,3,4; Homeroom Leader 1; Art Award 2.

Ambition: Private Secretary.

MARGARET KING

Sodality 1,2; Pep Club 2,3,4. Ambition: Marriage.



ROSE LA SALA

Sodality 1,2,3,4; Pep Club 2, 3,4; Senior Play.

Ambition: Secretary.



MARJORY LEAKEY

Sodality 1,2,3,4; Pep Club 2,3, 4; NCMEA 3,4; Lillis Libs 3,4.

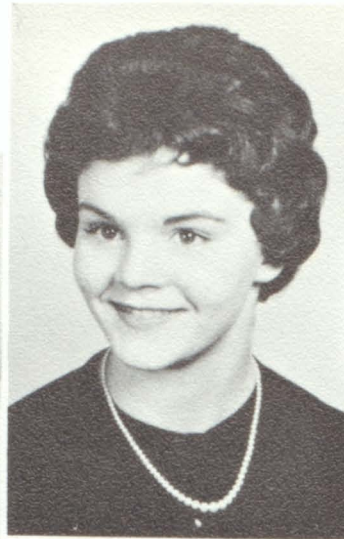
Ambition: College and marriage.



KATHLEEN LYNCH

Sodality 1,2; Pep Club 2;  
NCMEA 4; Lillistrator 4.  
Ambition: Secretary.

Ambition: College.



KATHLEEN LONG

Sodality 1; Pep Club 2,3,4; Lil-  
listrator 4; B-Team Cheerleader  
3; Varsity-Sub 4.

Ambition: Secretary



DONNA LEGATE

Sodality 1,2; Pep Club 2,3,4;  
Lillis Libs 1.

Ambition: Secretary.

JAMES LYONS

Ambition: Navy.



THOMAS MADIGAN

Sodality 1; Lillistrator Pho-  
tographer 4.

Ambition: To play it cool.



JACK McMAHON

L-Club 3,4; Football 2,3,4;  
Senior Play.

Ambition: College.



MARY JO McLEAR

Sodality 1,2,3,4; Pep Club 2,3,  
4; Representative 3; Lillis Libs  
1,2,3; Senior Play.

Ambition: Lawyer.

JOAN MALONEY

Pep Club 2,3,4; Representative  
4; Lillis Libs 1,2,3,4.

Ambition: Secretary.







LONNIE MORGAN

Debate 3; Band 2,3,4; Transfer from South Nodway High, Maryville, Mo., 2.

Ambition: To be a good father to my children.



GLYNN MORRISON

Religion Contest 2,3; Senior Play; Transfer from Rockhurst 2.

Ambition: College.

MARILYN MULLOY

Sodality 1,2,3,4; Pep Club 2,3,4; National Honor Society; Leader 3; Co-leader 2,4; Cheerleader 2,3,4; Varsity 4; Religion Contest 2,3; Senior Play.

Ambition: Nurse.



MARY JO MYERS

Sodality 1,2,3,4; Secretary 2,3,4; Pep Club 2,3,4; Senior Class President 4; Cheerleader 1,4; Varsity 4; Student Council Treasurer 4; Prom Attendant 3; Senior Play.

Ambition: Teacher.



LARRY NIEMEIER

Football 1,2; Basketball 1,2,4; Track 1; Leader 4; Lillistrator 4; Senior Play.

Ambition: To have my own horse.

JAMES NOLL

Football 3.

Ambition: To get a job.



DOROTHY OELKLAUS

Sodality 1,2,3; Pep Club 2,3,4; NCMEA 3,4; Representative of NCMEA 4.

Ambition: Marriage or Secretary.





EARL OVER

Transfer from Normandy High School, St. Louis, Missouri 4.

Ambition: Lawyer.



JAMES O'NEILL

Sodality 2,3; L-Club 3,4; Basketball 1,2,3,4; Track 1,2,3; Senior Play.

Ambition: Undecided.



MARGARET O'SULLIVAN

Sodality 1,2,3,4; Pep Club 2,3,4; Lillistrator, co-editor 4; Lillis Libs 1,2,3; Homeroom co-leader 3; National Honor Society; Religion Contest, 3rd place, 2.

Ambition: College



JOHN PAPIERNIK

Transfer from Glennon High School, 3.

Ambition: Priesthood or Brotherhood.



SYLVIA PEACHER

Sodality 1,2; Pep Club 2,3,4; Cheerleader 3,4; Lillistrator 4; Prom Attendant 3; Homecoming Queen 4; Senior Play.

Ambition: Elementary School Teacher.



JUDY PARKER

Sodality 1,2; Pep Club 2,3,4; Lillistrator 4; Band 1,2.

Ambition: Social Worker.



SANDRA OVERMAN

Sodality 1,2,3,4; Prefect 4; Pep Club 2,3,4; Secretary 4; Cheerleader 1,2,3; Lillistrator 4; Copy Editor 4; Seminar 3,4.

Ambition: College - then come what may.





CATHERINE PICKARD

Sodality 1,2; Pep Club 2,3,4; Lillistrator 4; Senior Play.

Ambition: College.



BERYL PRETZL

Sodality 1,2; Pep Club 2,3,4; Lillistrator 4; Homeroom leader 3; Cheerleader 1,2; Senior Play.

Ambition: Missionary Nun.



RITA PREVOST

Sodality 1,2,3,4; Pep Club 2,3,4; Vice-president 4; Lillislog 4; Senior Play.

Ambition: Nurse.

DIANE RATHBUN

Sodality 3,4; Pep Club 3,4; Lillis Libs 3,4; NCMEA 3,4; Transfer from Loretta 3.

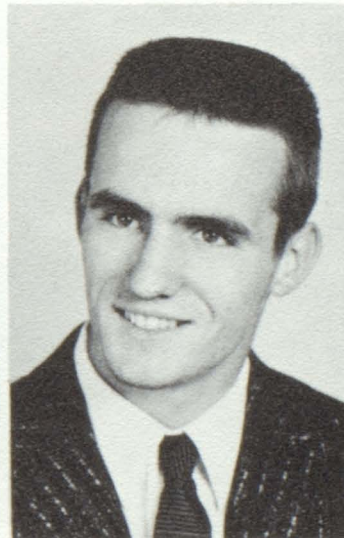
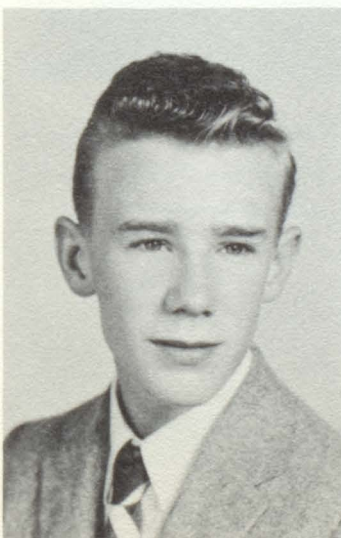
Ambition: Medical Technician.



PATRICK QUIRK

Transfer from Southwest 2.

Ambition: College.



MICHAEL REDMOND

L-Club 3,4; Football 3,4; Basketball 3,4; Track 3,4; Transfer from Rockhurst 3.

Ambition: To be a success.



EVELYN RENNE

Pep Club 3,4; Band 3,4; Transfer from Redemptorist, 3.

Ambition: Marriage.



RITA RUDOLPH

Pep Club 2,3,4; Lillistrator 4; Homecoming Attendant 4.

Ambition: Secretary.



WILLIAM ROBERTS

Football 1; Track 1.

Ambition: To be a success.



RENETTE RILEY

Pep Club 2,3,4.

Ambition: Surgical Nurse.



JACK RILEY

Track 2; Football 3.

Ambition: Engineer.

PATRICIA RYAN

Sodality 1,2,3,4; Vice-prefect 4; Pep Club 2,3,4; Debate 3; Lillis Libs 1,2,3,4; National Honor Society; Seminar 3,4; Moderator 4; Co-leader 1; President of Student Council 4; Math Scholarship to Kansas University 3; Religion Contest 1,3; Catholic Community Library Book Review Contest 3; Speech Contest 1,2,3.

Ambition: Doctor.



MICHAEL SABIN

L-Club 3,4; Track 3,4; Transfer from Hogan 3.

Ambition: To choose the right vocation.



STEVE SALMON

L-Club 3,4; Football 1,3,4.

Ambition: College.



LAWRENCE RYAN

Transfer from Rockhurst 3.

Ambition: Engineer.





ROSEMARY SCHNEPF

Sodality 1,2,3,4; Pep Club 2,3,4; Cheerleader 2,3,4; Varsity 4; Senior Play.

Ambition: To try to repay my parents for the many wonderful things they have done for me.



TIM SCHOLL

Lillistrator 4; Transfer from St. Mary's High, Independence 3.

Ambition: Air Force.

SHARON SCOTT

Sodality 1,2,3,4; Pep Club 2,3,4; Camera Club 1.

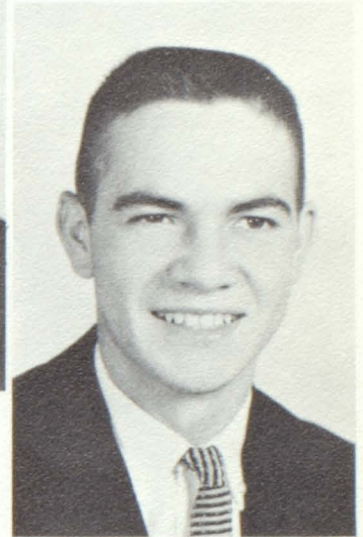
Ambition: Speech Therapist.



BRUCE SHARKEY

Football 1,3; L-Club 3,4; Basketball 2; Track 2,4.

Ambition: To be chief of the Blackfeet.



MALEE SHAW

Lillis Libs 1,2,3,4; Senior Play.

Ambition: To get married and live on a farm in Iowa.



MAURINE SHEELEY

Pep Club 2,3,4; Lillis Libs 1,3,4.

Ambition: Private Secretary.

THOMAS SLOAN

L-Club 4; Football 1,4; Basketball 4; Track 4; Transfer from Rockhurst.

Ambition: Mechanical Engineer and marriage.



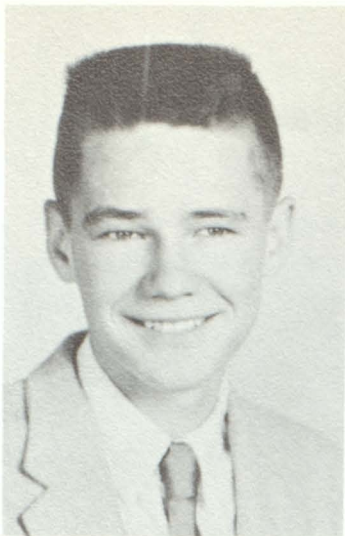
JERRY SMITH

Sodality 1,2,3,4; Lillistrator 3,4.

Ambition: To do God's will.







JAMES STROHM

Sodality 2; Co-leader 3; Football 1; Basketball 1,2.

Ambition: College.

TERRY TAFF

Pep Club 2,3,4; Lillis Libs 1,2.

Ambition: Occupational Therapist.



CECELIA TRABON

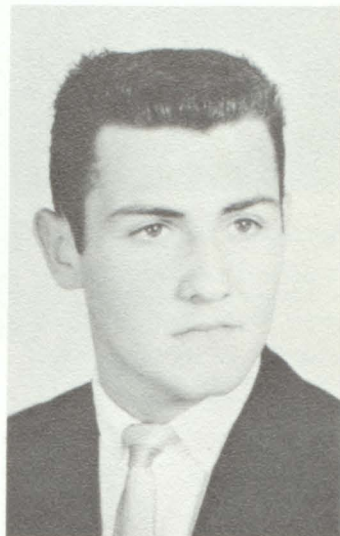
Sodality 1; Pep Club 2,3,4; Band 1,2,3,4.

Ambition: Airline Hostess.

VINCE TOTTA

L-Club 4; Football 3,4; Home-room Leader 4; Transfer from De La Salle 3.

Ambition: To coach sports.



LAWRENCE WALSH

Sodality 1,2,3,4; Vice-prefect 2,3; Seminar 4; Religion Contest 2nd place 3; Band 3,4; Senior Play; Lillislog 4.

Ambition: To make everyone happy.



ANNE WINTERHALTER

Sodality 1; Pep Club 2,3,4. Ambition: Marriage.





Coming down to first floor to look over where they will live as Seniors are the junior homeroom leaders, (left to right), Bob Morris, Ed Burch, Linda Laut, Teresa Scanlon and Ellen White. Vincent Richter is a missing leader.



**as Juniors step into the spotlight .**





(From left to right)  
 Mary Kay Anello  
 Ed Baker  
 Mary Pat Barden  
 Pat Bellman



Juana Blaimayer  
 Joyce Bloss  
 Ed Burch



James Bush  
 Carol Cady  
 Tim Crowley



Ronald Cutting  
 JoAnn Diebold  
 Inge Dudek



## *Privileged Characters*

# 302



Sandra Franssen  
 John Gorman  
 Joanne Healey  
 John Jones



Kenneth Koss  
 Linda Laut  
 Kathleen McAnany  
 Michael McNamara  
 Mike Muehlberger



Shirley Mueller  
 Kathleen Nolan  
 Richard Perkins  
 Mary Cecelia  
 Raynor

John Werkowitch  
 David Zuchowski



(Read from left to right)  
 Vincent Bertrand  
 Bill Bauer  
 Gary Barnes  
 Felix Arroya



Terry Gladioux  
 Donald Dee  
 Janice Curls



Viola Haidusek  
 Jean Goff  
 Marilyn Gorman



Joe Kupneski  
 Cheryl Kepford  
 Mike Howe



*“Come Right Inn”*

304

Kathleen Maloney  
 Janet Maher  
 Clement Maciel  
 Frank Lyon



Linda Reno  
 Judy Redmond  
 Clyde Pipes  
 Richard Nolan  
 Bob Morris  
 Erline Wheeler



Joan Welch  
 Sharon Ward  
 Jack Sublette  
 Kay Singleton  
 Teresa Scanlon  
 Sharon Rossato





Alicia Aguilar  
 Roderick Audelo  
 Mary Cassidy  
 Jim Cates  
 Jackie Cooper  
 John Dame



Christine Infranca  
 Roseanne Infranca  
 Peggy Jenkins  
 Tom Keller  
 Jean Lightner  
 Jerry Hueser

Juanita Diebold  
 Patty Grunden  
 John Hacker  
 Violet Haidusek  
 Ellen Harte  
 Maeve Hope



David Liston  
 Charles Lyles  
 Patricia Lynch  
 Gary Malkmus  
 Janet Massey  
 Eddie Niemeyer

Vincent Richter  
 Marguerite Storen  
 Judy Theis  
 Rita Wasmer  
 Jack Watson  
 Richard Woodmansee



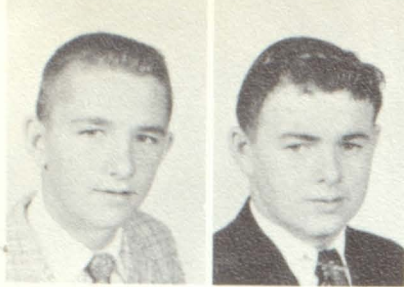


"They were seniors when we were freshmen," sophomore homeroom leaders, Jerry Purdy, Bob O'Sullivan, Nancy Ronan and Shirley Long, seem to say.

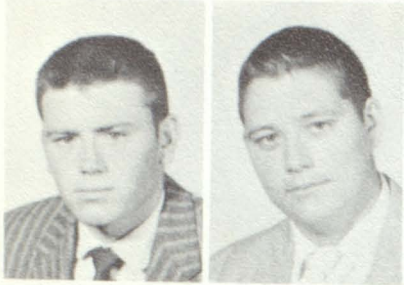


**School is routine to Sophomores . . . .**





Eddie Boyd  
Francis Brady



Dan Duloherly  
James Carson



Richard Gelino  
Michael Glander



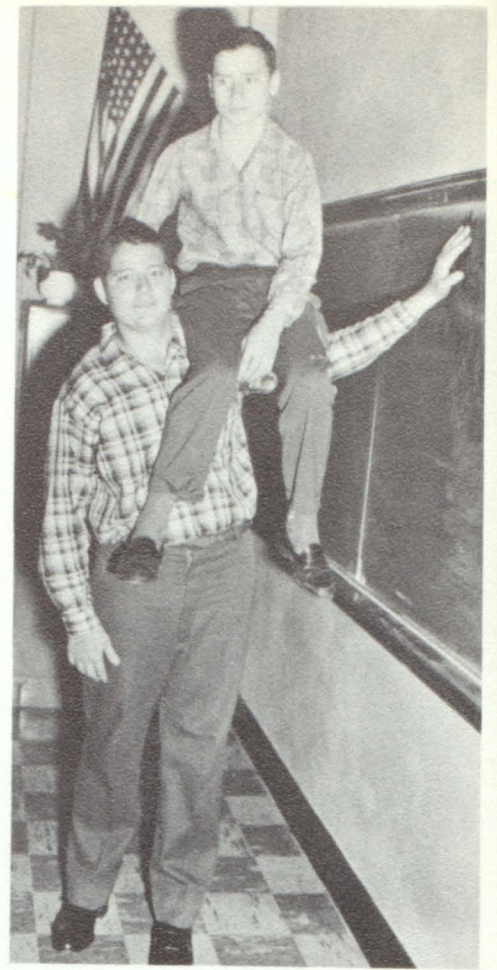
John Harding  
Bert Layde



Leonard Maciel  
John Nolan



Jerry Purdy  
Emmett Ryan



## Royal Teens

404

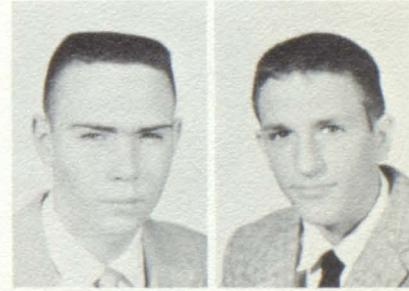


Last Row:  
Ralph Sifuentes  
Lee Sims

Ronald Strong  
Bernard Tschirhart

Bob Wilson  
Alfred Zuniga





1st row:  
James Bartlett  
Dan Brady

2nd row:  
Michael Brucker  
Philip Butler

3rd row:  
Carl Chandler  
Pete Chism

4th row:  
Roland Drimmel  
Richard Hudson

John Kalmus  
Ray Lindsey

Dan Murphy  
Bob O'Sullivan

Bill Zeller  
Bill Thomas  
Michael Sharkey  
Bob Pallanich

## *The Drifters*

406





Jillann Blakey  
 Mary L. Burrell  
 Phronsie Cowick  
 Willetta DeMastus  
 Andrea Ellsworth  
 Bennie Foster



Mary Ann Garcia  
 Nancy Goetz  
 Barbara Hamilton  
 Beverly Harrison  
 Doris Herner



Carol Howerton  
 Sylvia Hunter



Judy LaScala  
 Margie Leverich

Below:  
 Carol Long  
 Shirley Long  
 Edith McClurg

*We've got the drive in 405*



Sixth row: Rosalio Maloney, Bonnie Meier, Dolline Micheau, Bonita Miller, Rosemary Neimeyer, Kathleen Papiernik.



Seventh row:  
 Kathleen Reilly  
 Theresa Rogge  
 Nancy Ronan  
 Betty Rutledge  
 Etta Scaracello  
 Mary Ann Schoen  
 Susie Spindell





Freshman homeroom leaders, Mike Ganaden, Tom Ventola and Larry Sweeney (top) and Frank Supancic, Ann Schnepf and Susan Holmes leaf through a Lillis Handbook to learn how to be good Lillisites.



but something new to the Freshmen.





Emmett Brady  
Augustine Abenoja



George Dupree  
Douglas Buckman



Anthony Ivarro  
Michael Ganadan



Ronald Marsh  
Virgil Jones



Charles Rose  
Clifford Miller



Paul Scitz



Patrick Straley



Tom Venneman



Kenneth Woods



Larry Sweeney



Tom Walsh



German Zuniga



## *The Irish Urchins*

401





Ronald Adrian  
Juan Blaimayer

Michael Bradely  
Philip Dixon

Bruce Gillespie  
Robert Harvey

Robert Johnson  
Michael Jurgens

Bill Muehlberger  
Bernard Pulido

## *Something New in 402*



Donald Strada

Frank Supancic

David Sanford



Lorent Gyulafia  
Mark Werkowitch  
Tom Ventolla

Robert Watson  
Ricky Woulfe  
Robert Wallace



Read left to right:

Cathy Bartlett

Stacia Ballas

Maria Luisa Baez



Nancy Broyles

Anna Marie Bernal

Peggy Beebe



Vivian Callahan

Mary Burke

Susan Brucken



*St. Pat's*

Dolores Diebold

Martha Dean

Sharon Dahn



Linda Ford

Joyce Dupree

Vanessa Dunn



Shirley Grunden

Rosary Gonzales

Dolores Gonzales



Margaret Jenkins

Jean Hoskins

Susan Holmes







Read left to right:  
Linda Kitner  
Mary LaScala  
Mary Locascio



Grace Metoyer  
Joyce Mosby  
Lucille Nix



Odessa Nix  
Mary Peterson  
Margaret Pipes

*Pets*

403



Barbara Rhymer  
Sandy Rosenberger  
Joan Ryan  
Rosalie Santellan



Ann Schnepf  
Rose Ann Soligo  
Joan Smith



Sharon Stahlschmidt  
Susie Thompson

Across the page, Cathy Bartlett and Susie Thompson record the candy sale results for the day as Venessa Dunn eagerly watches.



Donna Vedoni  
Anita Wheeler  
Carole White



Foreign students show us where their native lands are. They are (left to right): Julius Gyulafia, Lorent Gyulafia, Hungary; Juana Blaimayer, Juan Blaimayer, Maria Louise Baez, Puerto Rico.



Students who were admitted to Lillis High after the first semester were (standing) Mike Spatedjl, Bill Campbell, Patty Matthews, Elsie Diaz from Puerto Rico, and (seated) Paul McGilton, Judy Wright, Sue Gier.





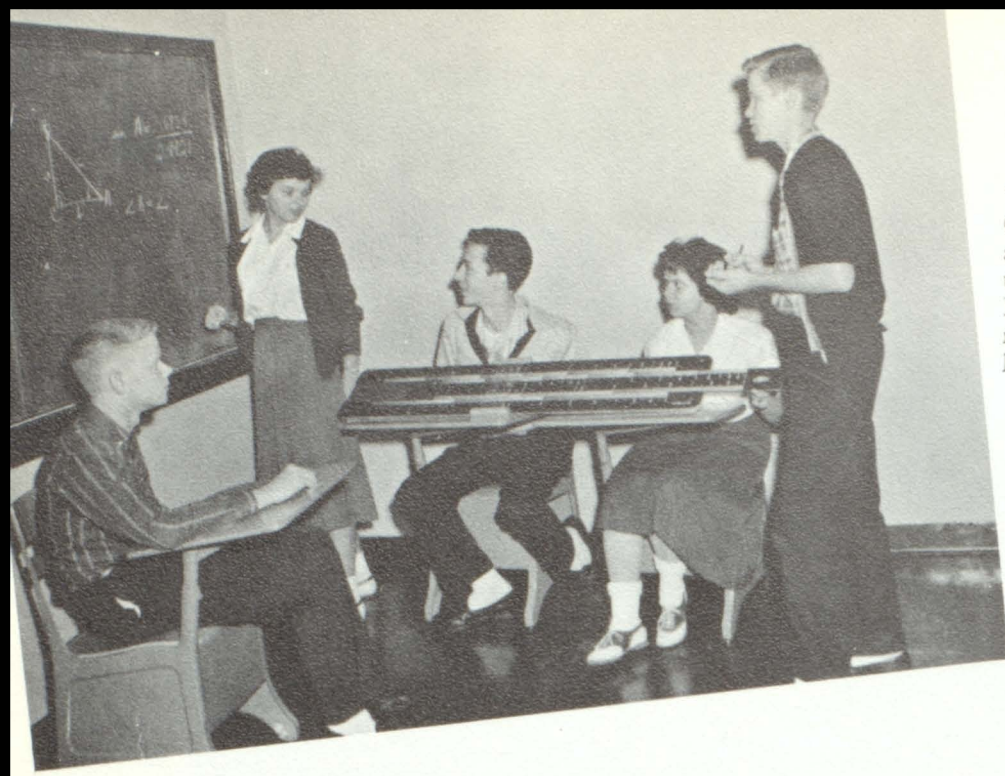


# Classes

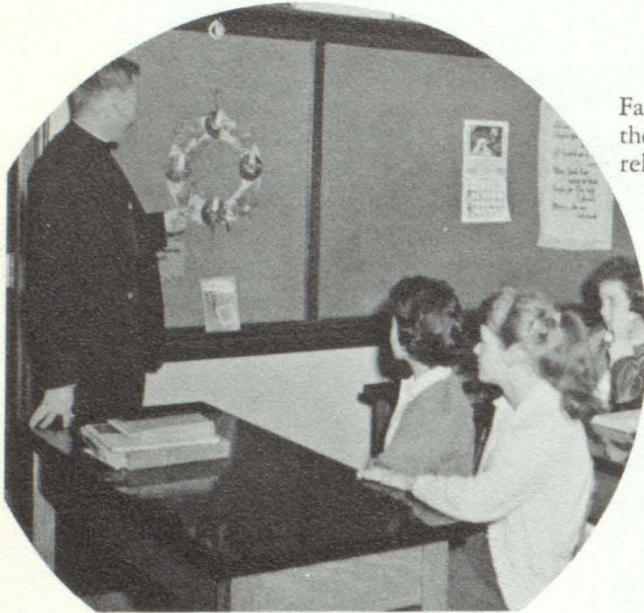
"It is not enough to be pious . . . You must also be intellectually equipped in order to deal with the enemies of the Church."

—Cardinal Richard Cushing.





"It's a simple problem," says Charles Haeffling. Pat Ryan solved it by the Pythagorean theorem, Tom Madigan and Diane Rathbun by the slide rule, and Larry Walsh by logarithms.



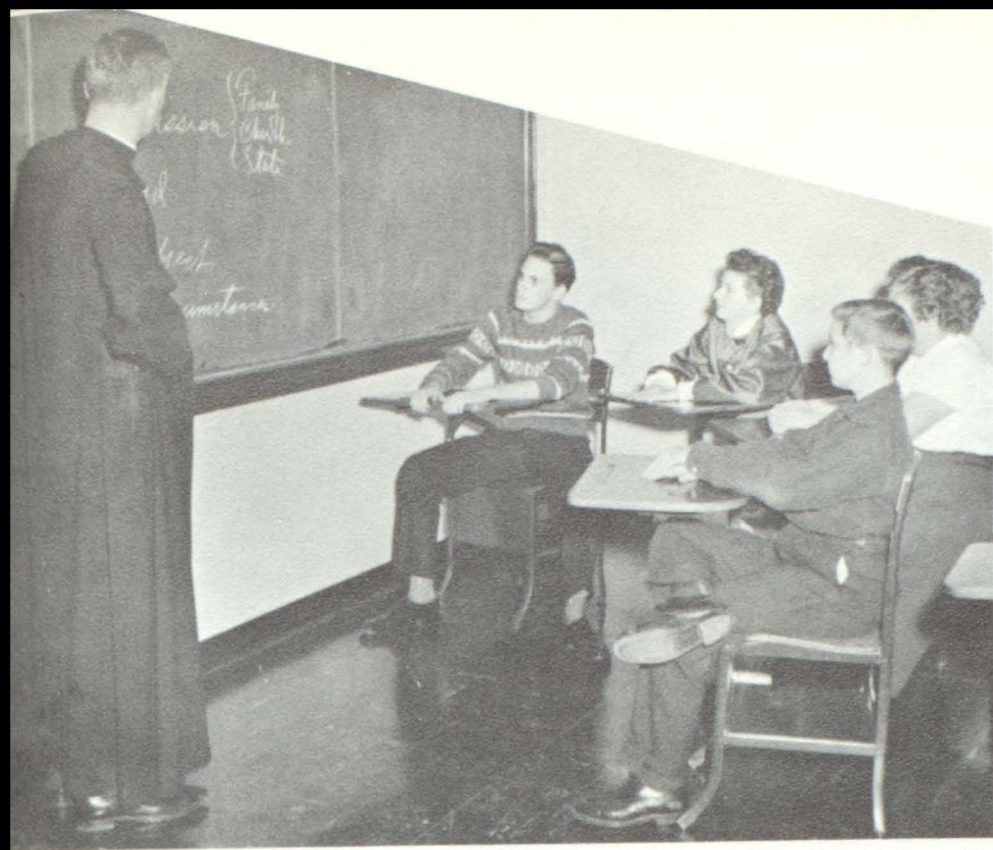
Father Rotert explains the meaning of the Advent Wreath to one of the Junior religion classes.

## Knowledge is sought

Leonard Maciel thinks that they're all right as he corrects the spelling of Bill Zeller, Mary Louise Burrell and Bob Wilson.

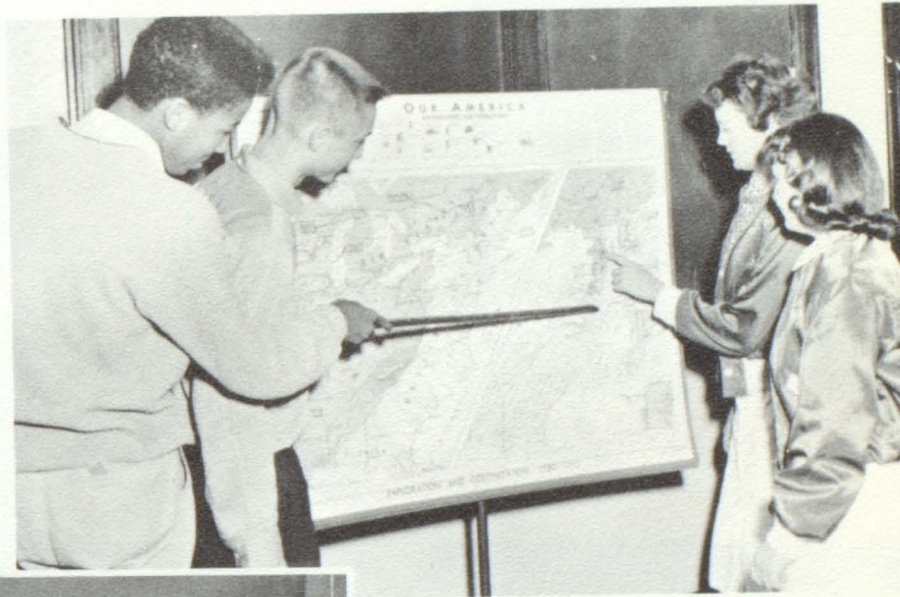






Father Kieran uses an outline on Christian education for sociology students, Tim Scholl, Terry Taff, John Papiernik and Patty Gibbons.

Carol Cady and Charles Lyles don't agree on the location of New Sweden. Kay Singleton and Richard Perkins are innocent bystanders.



**in many fields....**



In spite of the cast, Bob Palanich is doing a good job of helping Philip Butler with his world history.



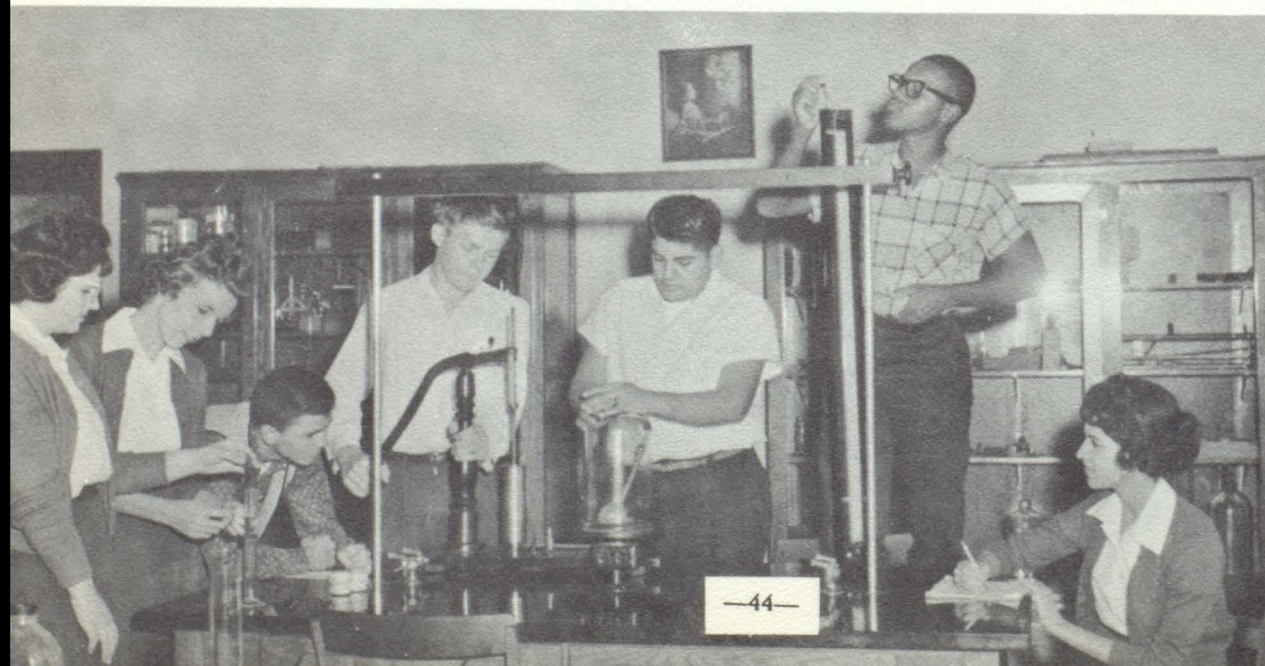
What's cookin'? Joanne Healey, Bill Bauer, Earl Over and Janet Massey are just about to try — Project X.



Shirley Long and Barbara Hamilton are busy brushing up on their biology. Good luck, girls. It belongs there somewhere.

## As scientists...

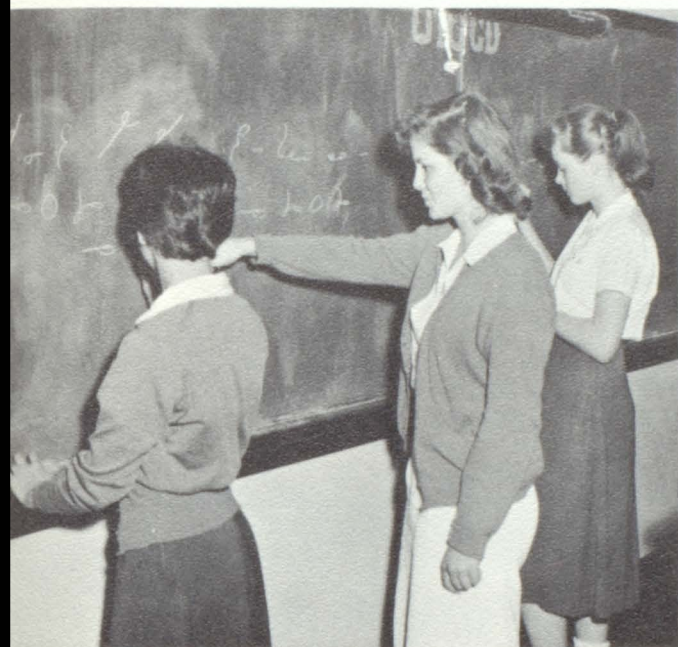
Physics is fun and interesting, especially when it comes to the experiments. While Marjory Leakey and Eileen Bryant work on the principles of buoyant force, Mike Sabin watches Emery Harmon and Fred Briseno experiment with air pressure. Nolan Davis does the climbing while Juana Blaimayer records the data.







These first year typists will tell you that hitting the right key at the right time isn't as easy as it looks. Right to left, as the picture fades, are Catherine Beebe, Carol Cady, John Jones, Cheryl Kepford and Shirley Mueller.



Taking a very stern look, "expert" Mary Cassidy is giving Rosanna Infranca a few tips on her shorthand. Jackie Cooper gives her own work serious concentration.

## As businessmen.....

Patty Farris and Margaret King (right), listen to Tom Gorman as he lectures on the art of bookkeeping. They have their books handy just to check.

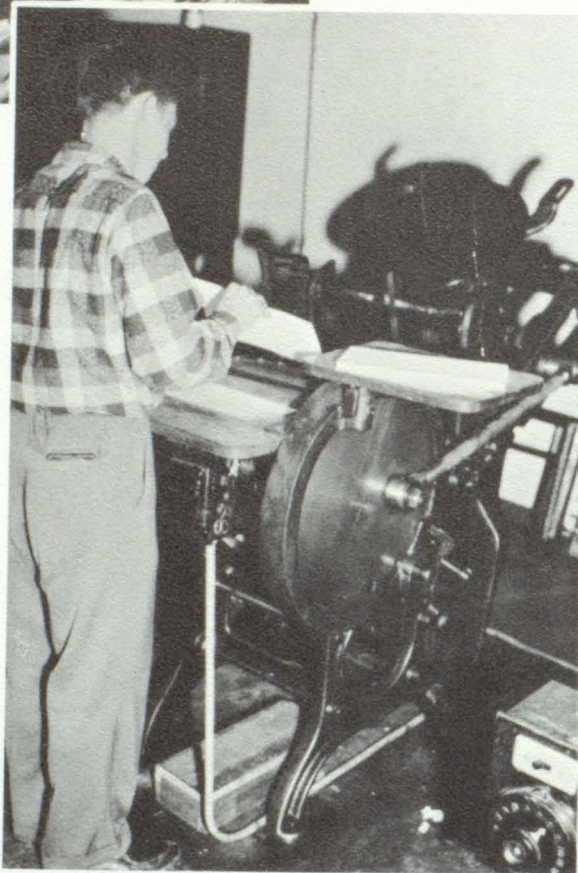






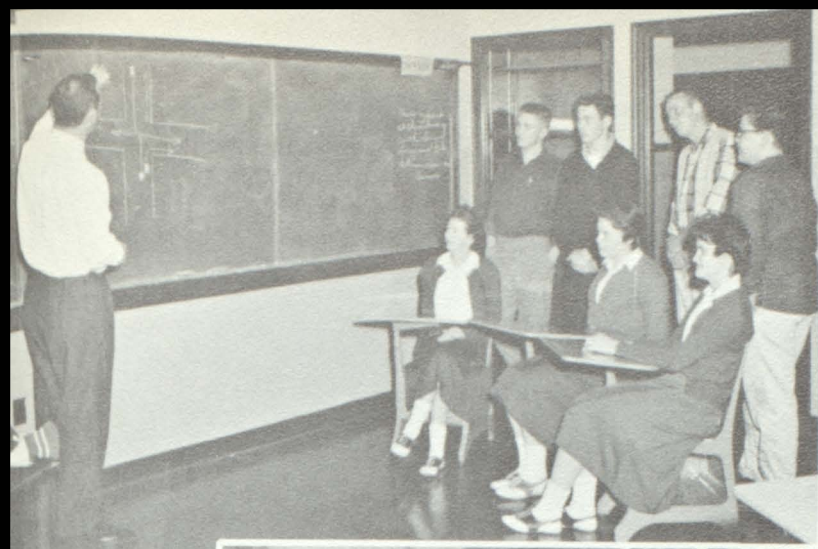
Looks complicated, doesn't it? "Only to the layman," says Dennis Hake, who is watching the automatic press in the print shop.

## As industrial workers.....



Will it be a test or a news sheet? Only Jim Lyons knows the answer to that question and he wouldn't tell us. Jim is feeding the hand press in the print shop. From this shop come the various athletic schedules, dance programs for the prom and semi-formal dances. In addition, programs for the senior play and musical events in the spring are run off by the boys.

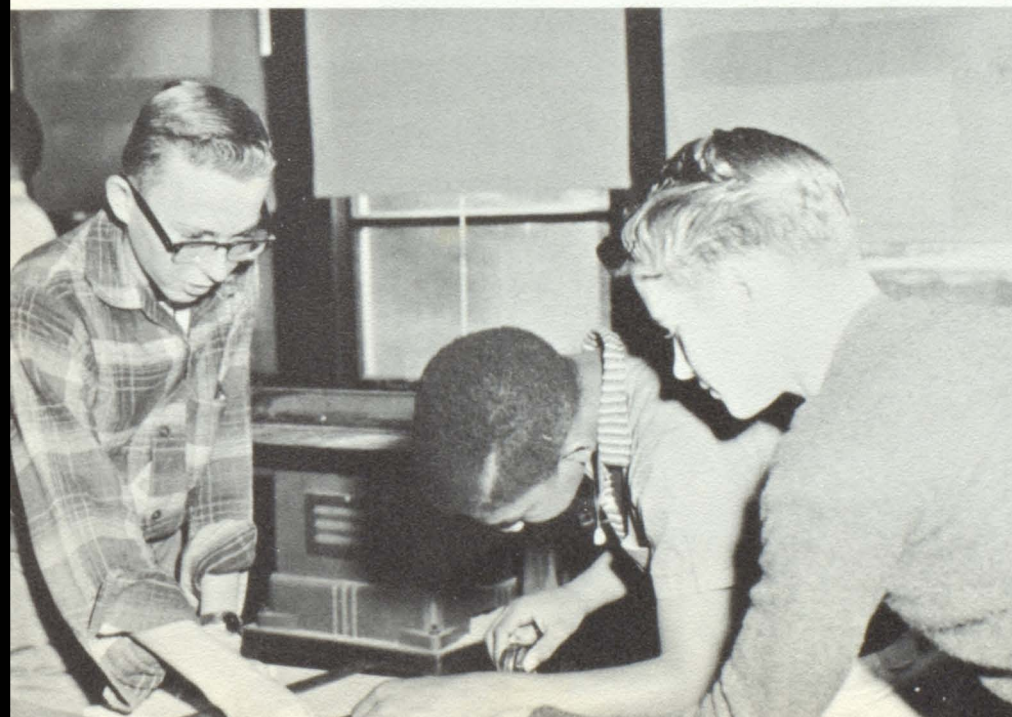




"Now just suppose . . ." Coach Schmiedeler gives an indoor driving lesson to Terry Taff, Dolores Glynn and Margaret O'Sullivan (seated left to right) and Steve Salmon, Larry Niemeyer, Jack McMahon and Bill Roberts (standing).

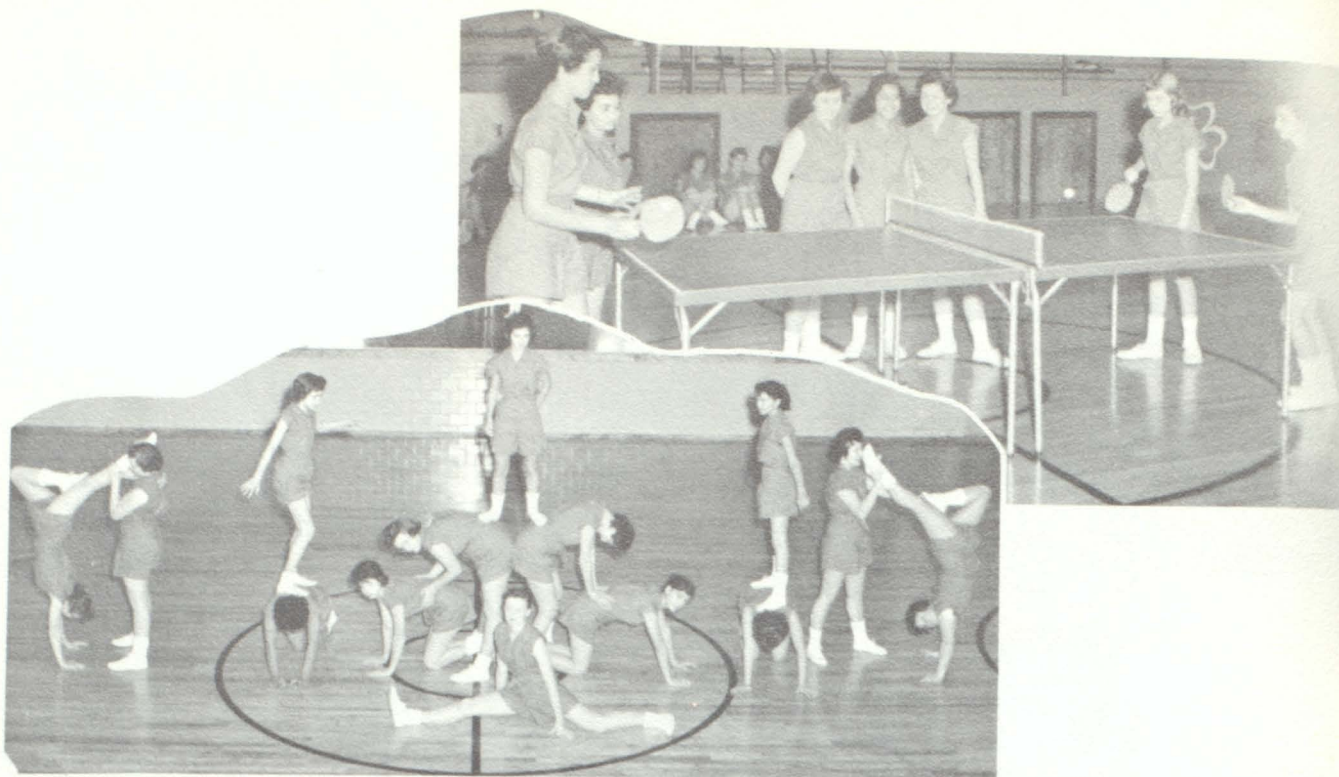


"So that's what we've been driving!" exclaim Donna Legate, Donna Anderson and Pat Ryan as Coach Schmiedeler explains what's under the hood.



Bill Zeller, Lee Simms and Ray Lindsey do some accurate measuring before doing any cutting in Coach Mintner's shop class.





We found the freshman girls doing everything from playing pingpong to trying their skill at acrobatics. We're just wondering who won the game!

**as poised homemaker....**



Mrs. Stevens from Stevens Modeling School visited Lillis at the invitation of Mrs. Green. She gave the freshmen and sophomore girls some tips on correct posture. Seated is one of the Stevens' models.





Marguerite Storen is putting the finishing touches on her new plaid skirt while Bennie Foster works on a stubborn wrinkle. Push hard, Bennie.

## and artists...

Sister Gratia's classes had been making enameled ashtrays and earrings for the past few days. Some of the results are visible on the table. The art classes are responsible for stage sets and decorations for dances, as well as the hall posters for various occasions.

When we peeked into the Arts and Crafts room, we found Peggy Jenkins working industriously at the loom, in spite of Mike Spatedjl's helpful hints. Charles Lyles was watching from a safe distance. Meanwhile over to the left, Kay Singleton is showing off the enameled ash tray she made to Ellen Harte.







TRUMPETS—

Anita Wheeler  
 Susan Holmes  
 Nancy Broyles  
 Robert Watson  
 Mike Juarez  
 Dan Cates, and  
 Ronald Drimmel.



TROMBONES—

Lonnie Morgan  
 Shirley Grunden  
 and Larry Walsh

# School

SAXOPHONES—

German Zuniga  
 James King  
 Evelyn Renne  
 Vincent Richter



PERCUSSION—

Edith McClurg  
 Betty Rutledge  
 and Sharon Bedsworth



Tom Walsh  
 Bruce Gillespie  
 Ronald Marsh  
 Tony Fowler  
 Mary Ann Schoen  
 Carl Chandler



REEDS—

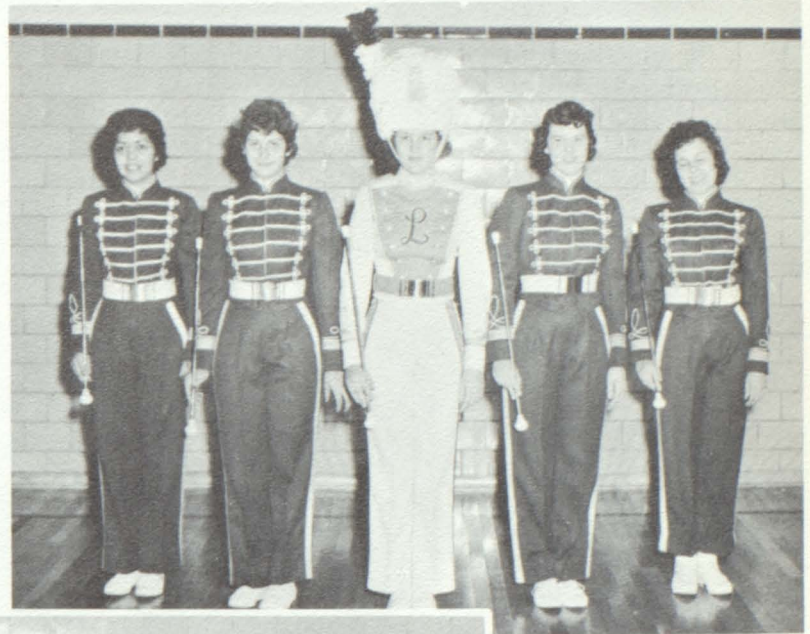
Phronsie Cowick  
Marilyn Gorman  
Cecilia Trabon  
Nolan Davis  
Jeanie Hoskins  
Margaret Jenkins



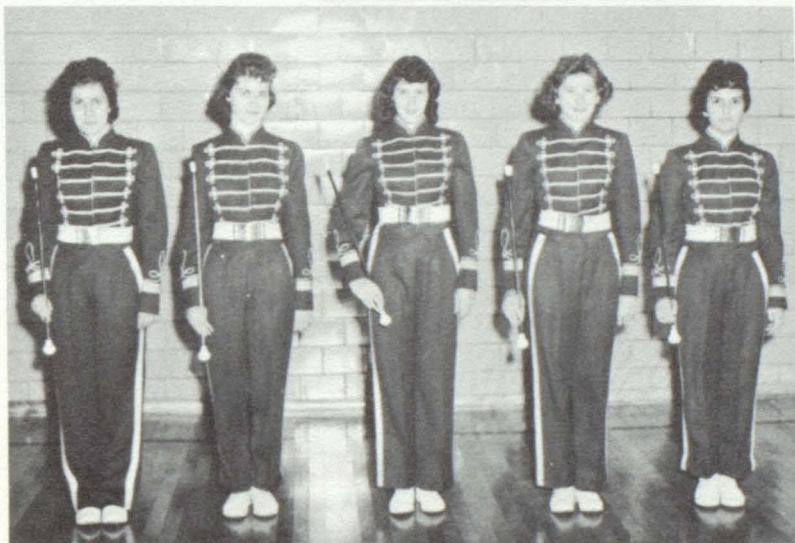
# Band

MAJORETTES—

Dolores Aguilar  
Joyce Bloss  
Pat Bachman  
(Drum Majorette)  
Julia Franzen, and  
Violet Haidusek.



Viola Haidusek  
Judy Redmond  
Sandy Rosenburger  
Mary Burke, and  
Judy LaScala



BASS HORNS—

John Dame  
Dan Brady  
Bill Zeller, and  
Charles Haefling





# Glee Club



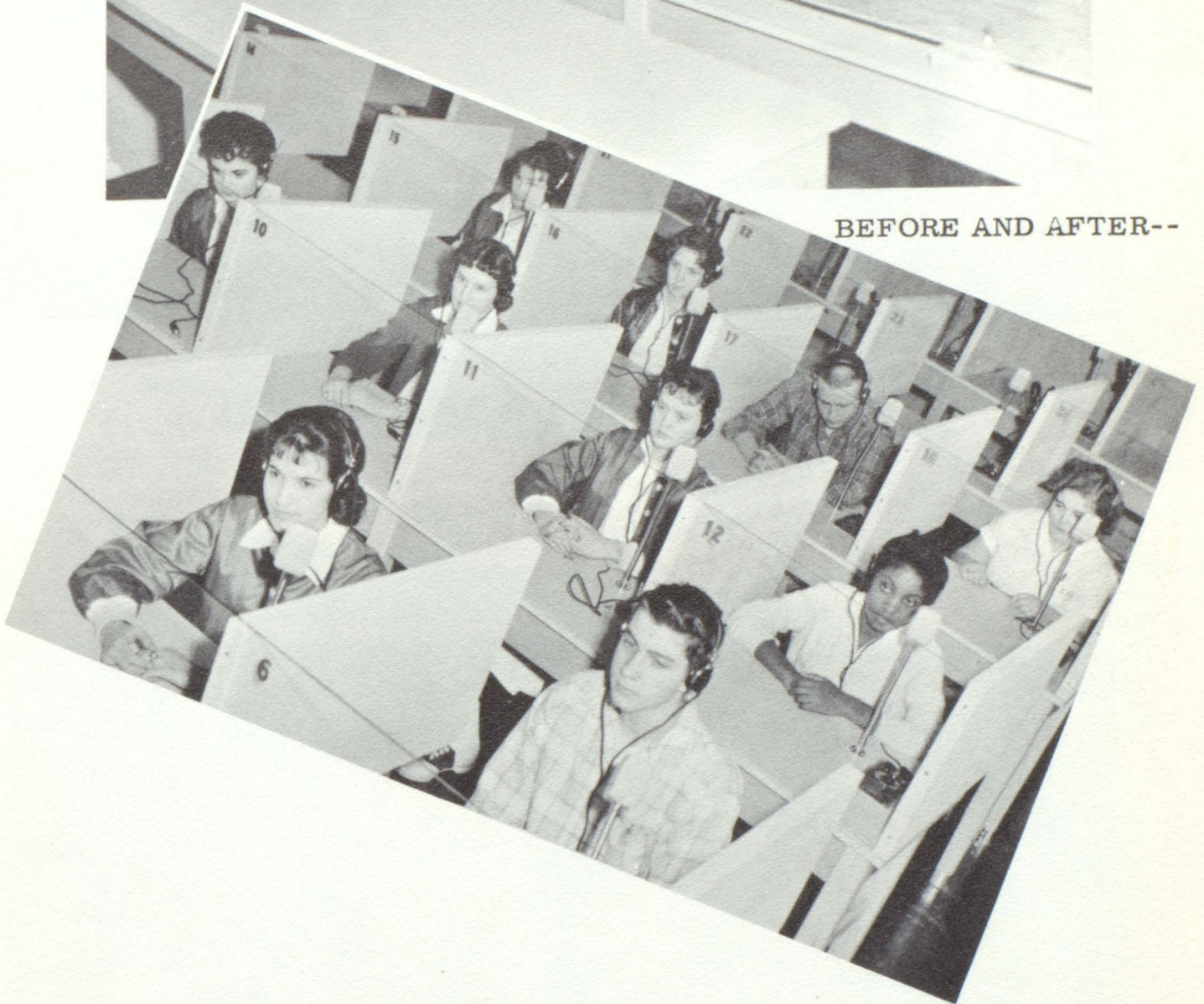
The Senior girls glee blend their voices to show their appreciation to Sister Fabiola on her name day.



Senior and Junior boys were caught by the photographer as they were singing for the Living Rosary in October.



# Language Laboratory



BEFORE AND AFTER--

This year, something new was added at Lillis—a language lab. These new facilities will be used by all classes in foreign languages. In the first picture, you see Mr. Joseph Turner, the engineer who installed the microphones and recording equipment. In the second picture, some students are "experimenting." FRONT ROW: Juana Blaimayer, Ed Baker. SECOND ROW: Mary Cecilia Raynor, Patricia Bachman, Carol Cady, Davetta Hardy; THIRD ROW: Mary Pat Barden, Mary Jo McLear, Jack McMahan, Patricia Gibbons.



# Introducing ...



The Seniors in the National Honor Society beginning their second year are: (left to right) Charles Haeffling, Emery Harmon, Pat Ryan, Marilyn Mulloy, Joyce Hueser, Nolan Davis, Margaret O'Sullivan, and Mary Ann Cook.



Juniors and Seniors who were inducted into the National Honor Society this year are: (left to right) Richard Perkins, Joanne Healey, Linda Laut, Mary Pat Barden, Mary Cecelia Raynor, Shirley Mueller, Maeve Hope, Jean Goff, Ellen Harte, Ed Burch, Bill Bauer, Catherine Beebe, Larry Walsh, Sandra Overman, and Eileen Bryant.



# National Honor Society

The smallest group of the auxiliary members of the National Honor Society this year is the group of sophomore probationary members. They are: (left to right) Emmett Ryan, Jerry Purdy, Mary Ann Schoen, and Edith McClurg.

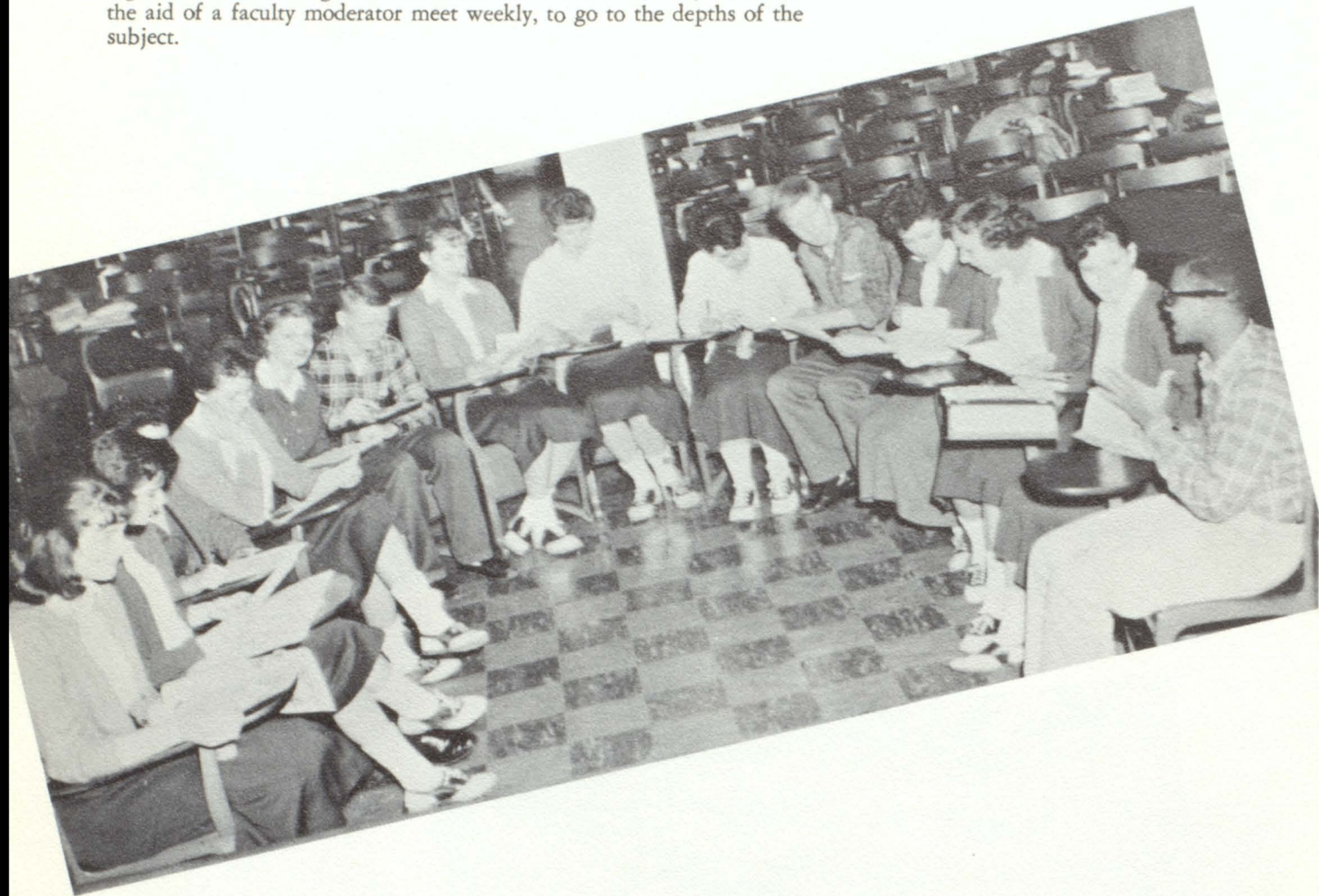


Freshmen who were named as pledges to the National Honor Society look at the Honor Roll where their names may soon appear. Left to right, they are: Mary Locascio, Joan Smith, Susan Holmes, Anita Wheeler, German Zuniga, and Linda Ford.



# Seminar

With the aim of furnishing extra stimulating activities to those students who are equipped to do more intensive study, the Seminar was begun last year, and is being continued this year, because of the demand for it. Subjects, not ordinarily taught in connection with the regular class are brought to the attention of these students, who with the aid of a faculty moderator meet weekly, to go to the depths of the subject.



The seminar was examining the data obtained from experiments in photosynthetic research, when we snapped this picture. Those attending this session of the seminar were (left to right) Mary Pat Barden, Mary Cecilia Raynor, Billy Bauer, Jean Goff, Erline Wheeler, Charles Haefling (co-chairman), Joanne Healey, Shirley Mueller, Joyce Hueser, Larry Walsh, Pat Ryan (co-chairman) Eileen Bryant, Maeve Hope, and Nolan Davis. John Gorman and Emery Harmon were missing from the seminar when this picture was taken.

This page sponsored by  
THE MOTHERS AND DADS CLUB  
of  
LILLIS HIGH SCHOOL



# *Activities*



"But it is not enough to be intellectually equipped. You must also live the Christlike life, you must live what you believe."

—Cardinal Richard Cushing.



"Who is she that Cometh forth as the morning rising; as fair as the moon, bright as the sun, terrible as an army set in battle array?"



Coronation scene for Living Rosary, October, 1959

The Sodality officers look on as Sandra Overman, prefect, crowns the Blessed Mother. Left to right, are: Charles Haefling, Jean Goff, Emery Harmon, Mary Jo Myers, Sandra Overman, Pat Ryan, Jerry Smith, Mary Pat Barden, and Larry Walsh.

## *Sodality*







Every year during the season of Advent it has been traditional to have an Advent Wreath in the main hall.

The weekend before Advent some of the senior Sodality officers prepare the Advent Wreath. Perched on the ladder is Mary Jo Myers, secretary. Charles Haeffling, treasurer, and Sandra Overman, prefect, are adding the final touches of greenery.



## *of Our Lady*

The third week of Advent saw the Sophomores participating in the lighting of the Advent Wreath. Lighting the candles is Tom Ventola.





The Juniors of 304 and 306 are about to deliver their Christmas packages for their poor families.



The Seniors of 201 are preparing their Christmas baskets for their needy family. They are (left to right) Dorothy Oelklaus, Steye Salmon, Rose LaSala, Donna Legate, Jerry Smith, Donna Anderson, Rosemary Schnepf, and Carol Bellante.





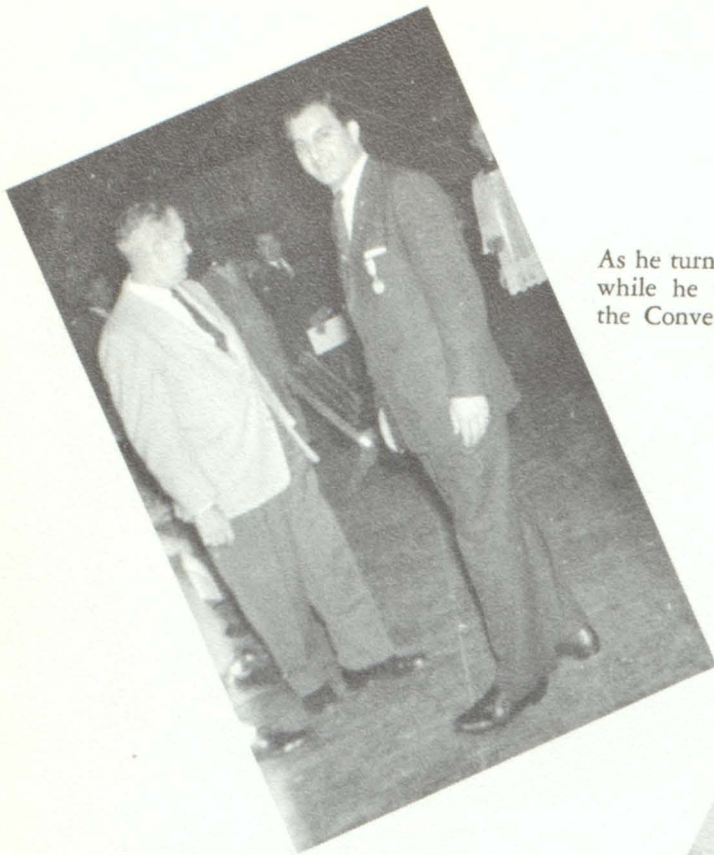


Margaret O'Sullivan, Mike Juarez, Sandy Overman, Tony Brown, Pat Ryan, Mary Jo Myers, Joyce Hueser, Charles Haefling, and Mary Ann Cook took part in the sodality-sponsored panel entitled "What Lent Means To Me."

Caught in an informal discussion with the Rev. John Stitz, retreat-master, were Larry Ryan, Tom Sloan, Father Stitz, and Kathleen Gregory (standing), Julia Franzen, Joyce Hueser and Fred Bresino.







As he turns, we catch a surprise glimpse of Danny Thomas while he visits with some of the out-of-town guests at the Convention.

The Lillis Band enthusiastically welcomes delegates from Newark, New Jersey, at the Kansas City Airport for the NCCY Convention





Msgr. Joseph E. Scheider meets officers of some of the Parish C.Y.C. shortly before the Convention. Left to right: Jerry Hueser, Cecilia Trabon, John Jones, Msgr. Scheider, Jean Goff, Frank Lyons, Shirley Long, and Violet Haidusek.



The National Council of Catholic Youth Convention, the biggest one ever to hit Kansas City, was one of the high points of the 1959-1960 school year. Between 10 and 15,000 teenagers, young adults and adults converged on Kansas City for 3 days. The Bishop declared a free day on Friday, November 14, so that the students could attend the Convention. The Convention closed at the Municipal Auditorium with the Mass, offered by Cardinal Cushing on Sunday, November 16. The Convention was ended by the Mass which ably illustrated the theme of the Convention — "Personal Sanctity-Modern Challenge".

Bishop Cody looks on as Cardinal Cushing presents Danny Thomas with the Pro Deo et Juventute Medal at the Convention banquet.





# *Religious Activities*

Senior semi-finalists in the religious contest gathered right after they have been informed of their selection are seated, (left to right): Eileen Bryant, Cathy Beebe, and Mary Ann Cook. Standing, (left to right): Joyce Hueser, Larry Walsh, Emery Harmon, Pat Fetters, Pat Baker, Margaret O'Sullivan and Charles Haefling.







Reading the rules for the next round of the religion contest are the freshman and sophomore semi-finalists, (left to right): Mary Ann Schoen, Edith McClurg, Peggy Beebe, Carol Long, Vivian Callahan, Donna Vedoni, Mary Locascio, Emmett Ryan, Anita Wheeler, Susan Holmes, and Joan Smith.

Junior semi-finalists (standing, left to right): Janice Curls, John Dame, John Gorman and Mary Pat Barden. (Seated, left to right): Erline Wheeler, Maeve Hope, Mary Cecelia Raynor, Jackie Cooper, Joanne Healey, Jim Cates and Shirley Mueller.

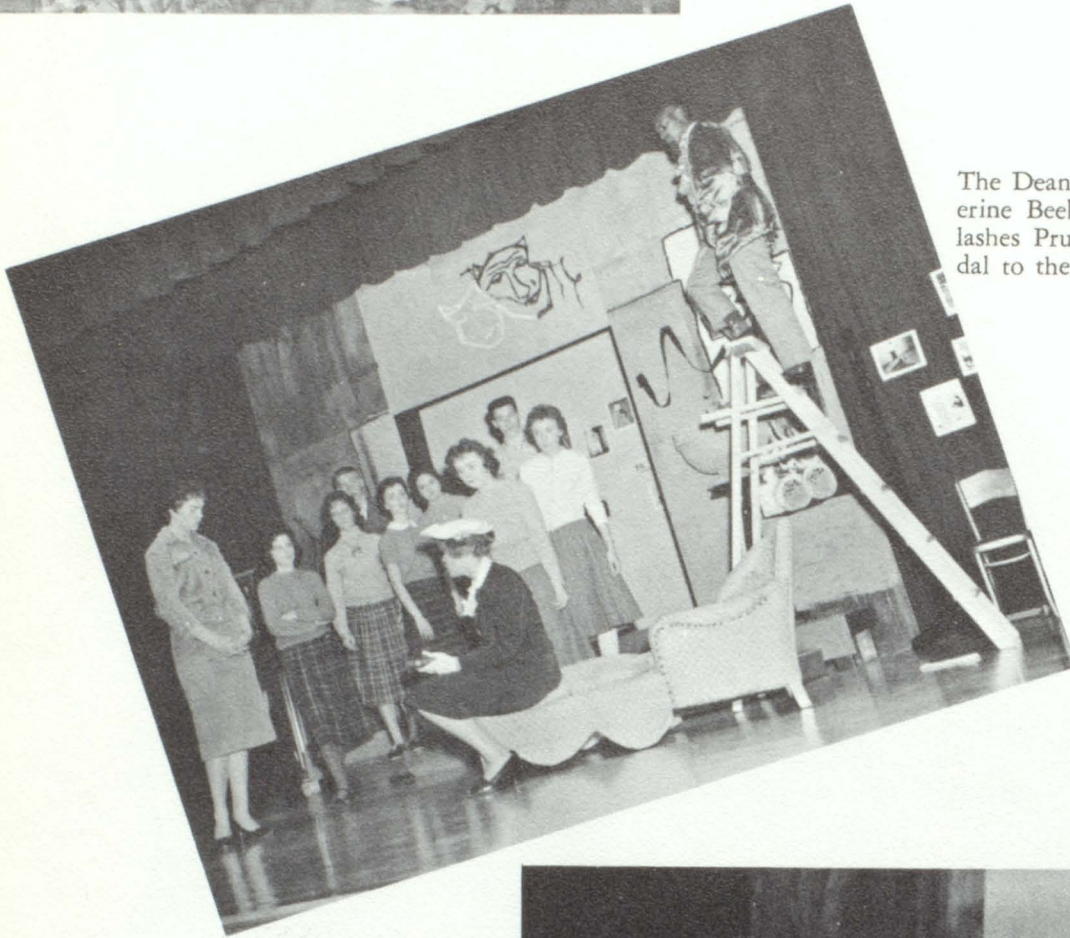






Tad Voohis (Tom Gorman) explains to the cast how his play is to be acted.

# Senior Play



The Dean of Women (Catherine Beebe, seated) tongue-lashes Prudence Mason scandal to the Dramatic School.

Cast does an instant make-up job on Pat Fetters while Professor Bach (Nolan Davis) and Jerry Flannigan (Jim O'Neill) look on.





The girls practice their dramatic reading.



(Above) Larry Walsh, Larry Niemeyer and Tom Gorman as Romans in the play within the play, make their entry.

(Below) Professor Bach persuades Prudence Mason to remain for the third act. Claire Carter (Mary Jo Myers) tells Prudence to be careful around these amateurs.





## Meet the Press



Here are the students who put out our monthly newspaper—Jerry Smith, Margaret O'Sullivan, Dolores Glynn, Tom Madigan and Bill Bauer.

### LILLISTRATOR STAFF

Editor-in-chief.....	Margaret O'Sullivan
Sports Editor.....	Bill Bauer
Circulation.....	Jerry Smith
Photographer.....	Tom Madigan
Business Manager.....	Dolores Glynn



# Yearbook Staff



Don't we look industrious? Linda Farrell and Eileen Bryant are trimming and arranging pictures, while Larry Walsh proof-reads some copy. Catherine Beebe takes some time off from her typing to give her "professional" opinion to Joyce Hueser and Emery Harmon.

## LILLISLOG STAFF

Editor-in-chief.....	Joyce Hueser
Co-Editor.....	Larry Walsh
Layout Editors.....	Eileen Bryant Linda Farrell Rita Prevost
Photographer.....	Emery Harmon
Business Manager.....	Catherine Beebe



# Homecoming Queen . . .

Mike Sabin poses with the lovely football Homecoming Queen of 1959, Miss Sylvia Peacher.



(Below) Pat Feters and Rita Rudolph were Senior attendants for the Queen.



(Left) The two Junior attendants were Teresa Scanlon and Jean Goff.



Roving reporter Larry Sweeney interviews Virgil Jones disguised as a football captain. The Queen, Tom Veneman, and her attendant, Doug Buckman, are in the background.

# Signs over Homecoming Festivities

"I'm dressed for the occasion," replied Herkimer of 306.



(Left) B-team cheerleaders are Kathleen Nolan, Peggy Jenkins, Ellen Harte, and Pat Bellman.

The cheerleaders lead the Queen in the Parade. Left to right are Kathleen Nolan, Rosemary Schnepf, Sharon Rossato, Mary Jo Myers, Marilyn Mulloy, and Rose LaSala.





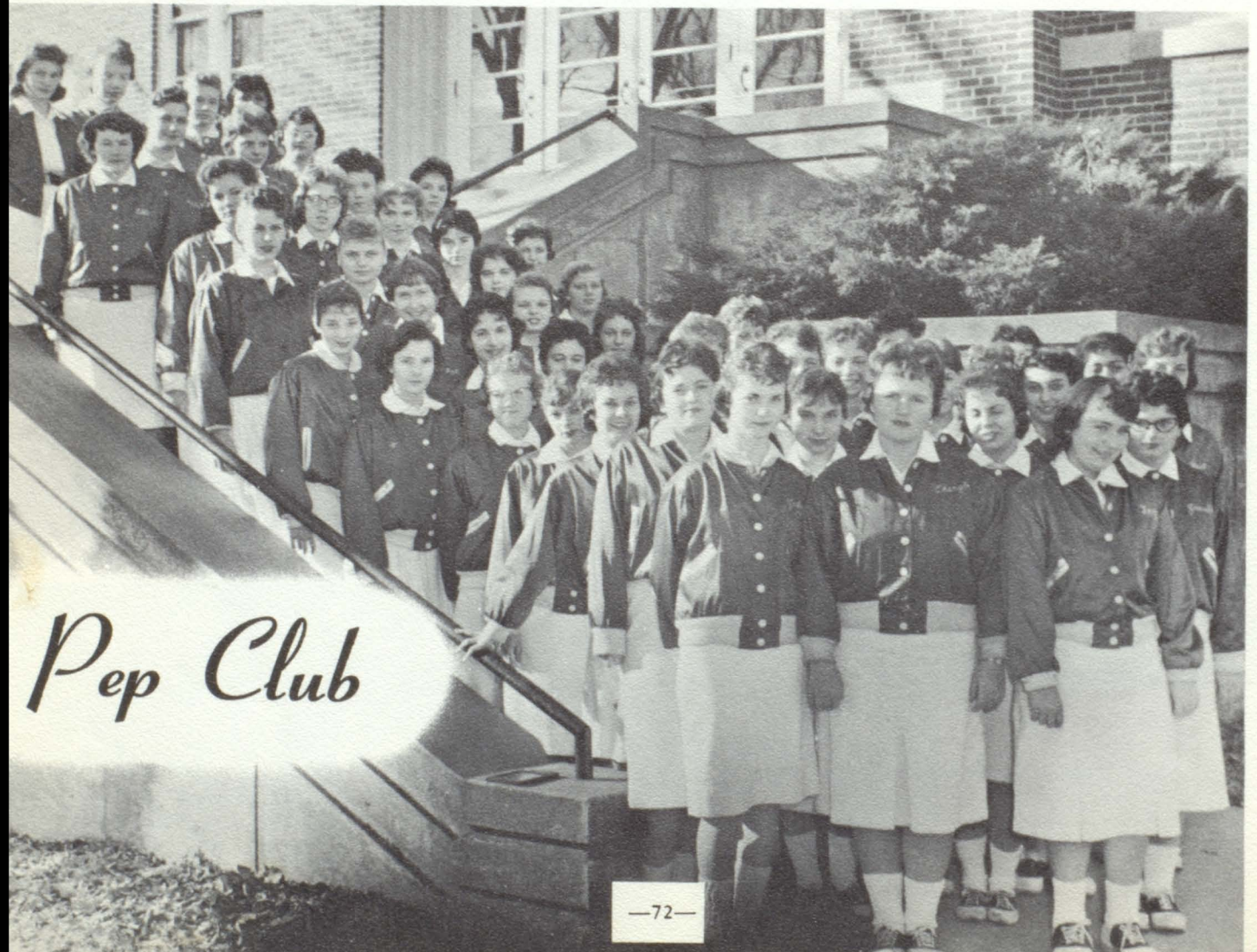


Sophomore cheerleaders: Shirley Long, Carol Long, Carol Hower-ton, Rosalie Maloney, and Nancy Ronan.



Freshman Cheerleaders: Mary LaScala, Joan Smith, Susie Thompson, and Mary Locascio.

**We support our team,**



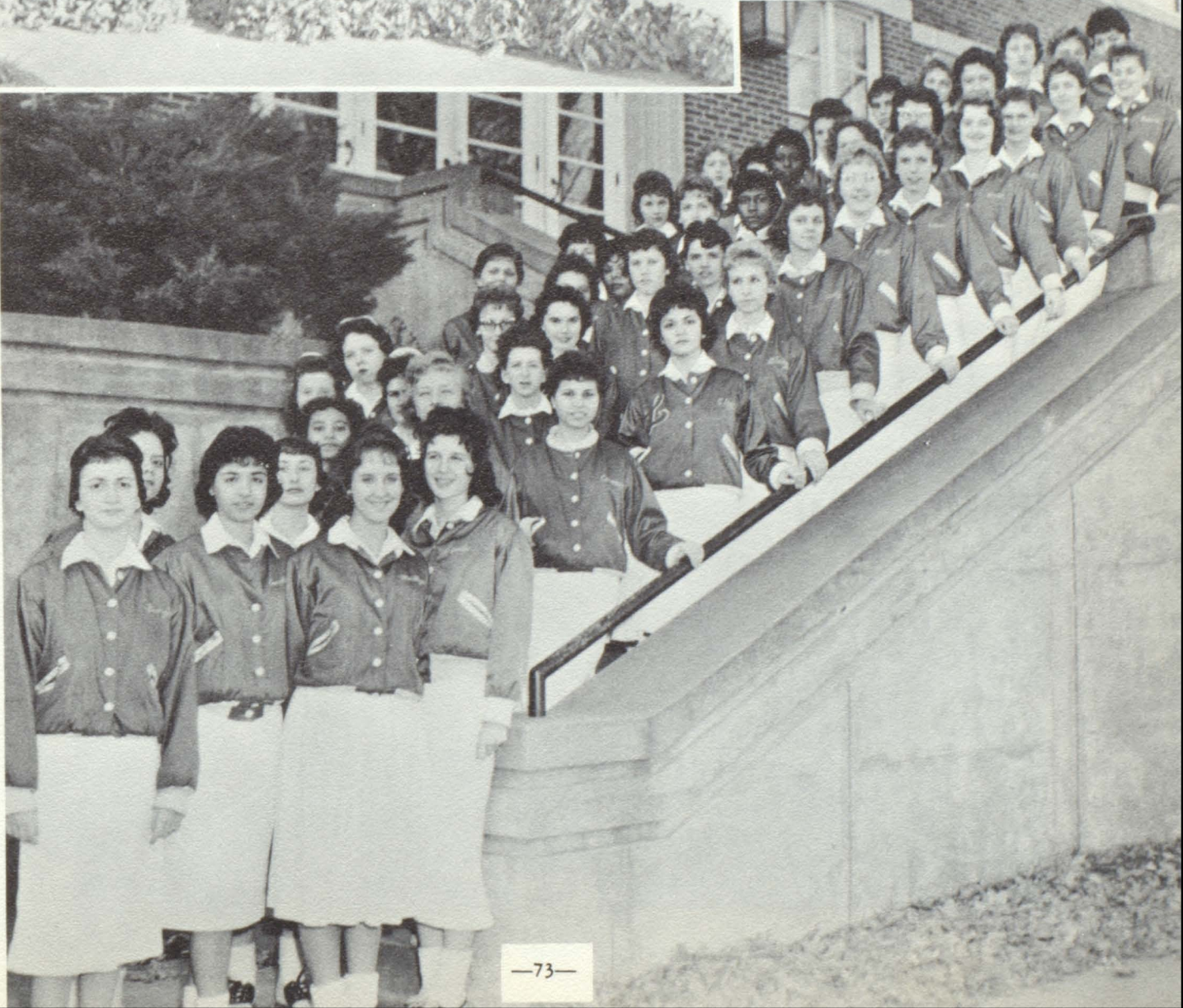
*Pep Club*



The varsity cheerleaders Sylvia Peacher, Rosemary Schnepf, Sharon Rossato, Mary Jo Myers, Marilyn Mulloy, and Theresa Scanlon pose before a football game.

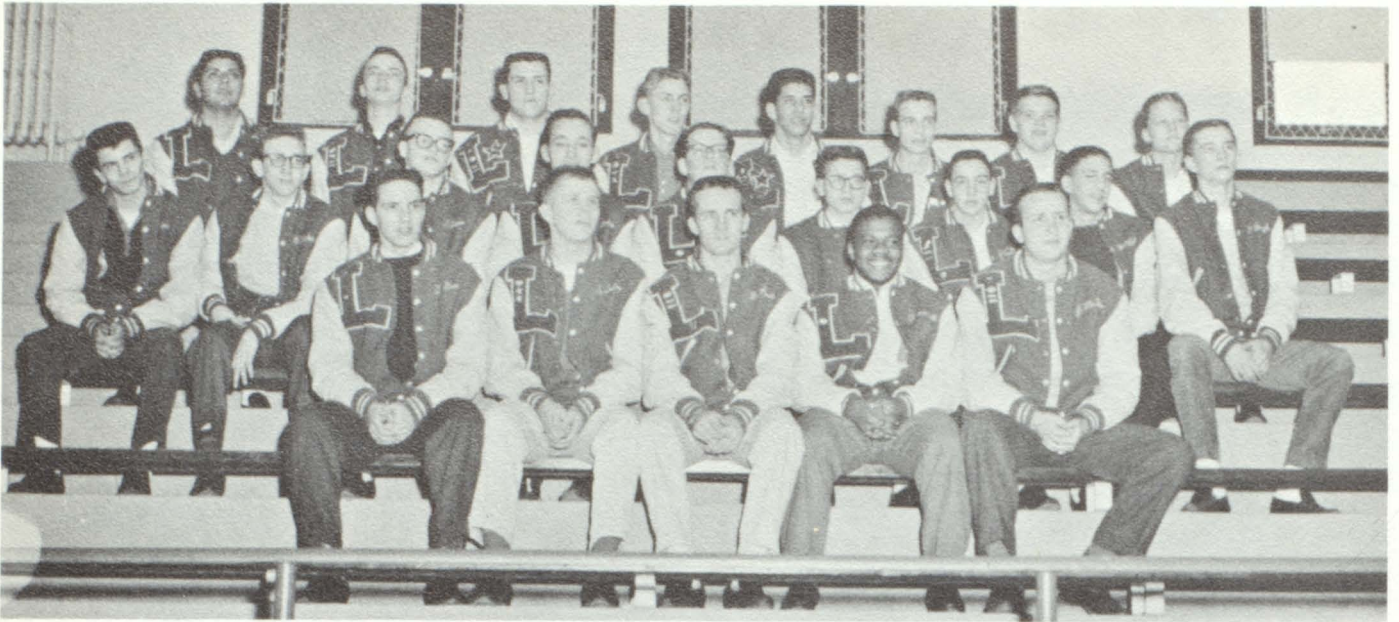


**Win or lose.**





# Lettermens Club



The L-club is made up of those boys who have lettered in any school sport. TOP ROW: Mike Juarez, Tom Keller, Vince Totta, Donald Dee, Mike Muehlberger, Mike Sharkey, John Harding, Pete Chism. MIDDLE ROW: Mike Sabin, Dennis Hake, manager, Larry Sweeney, Lonnie Morgan, Pat Baker, Richard Hudson, Ronald Cutting, Bob O'Sullivan, Ed Boyd. FRONT ROW: Tony Brown, president; Steve Salmon, vice-president; Mike Redmond, treasurer; Jim Bartlett, sergeant-at-arms; Jack McMahon, secretary.

# Librarians



The Lillis Libs help keep the Lillis library running smoothly.





Some members of the Junior glee class were caught during one of the numbers for the Christmas program.



Regina Boyle has taken up playing with doll houses again. This time it was to set up a floor plan for a homemaking class.



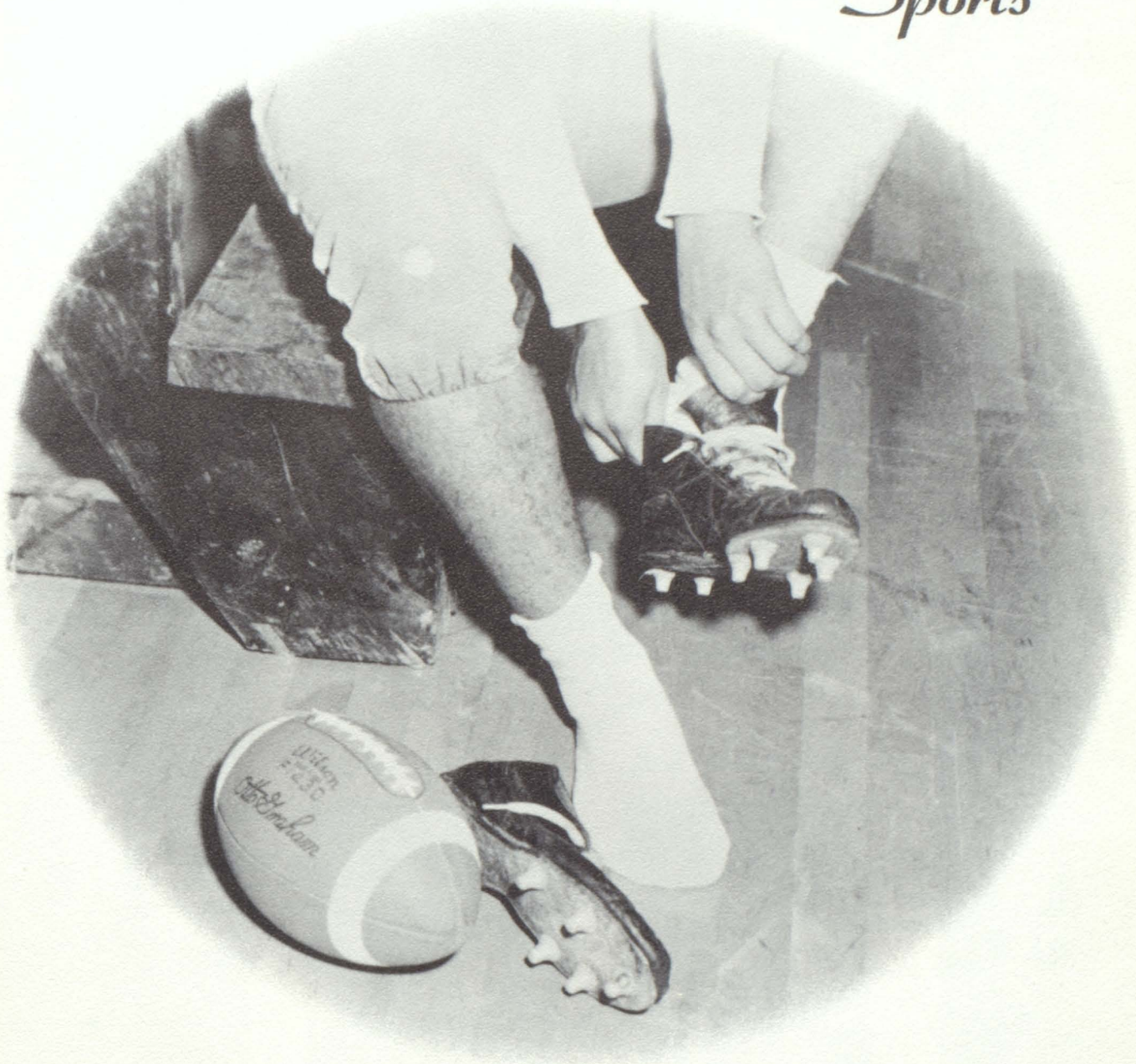
# *Moments To Remember*

It was a solemn moment when Mr. James O'Sullivan crowned Martha Allegri "Prom Queen". Next to Martha is her escort James Bunello. Her majesty's attendants were Sylvia Peacher (left) and Mary Jo Meyers with their escorts, Mike Sabin and Jim O'Neill.





# *Sports*

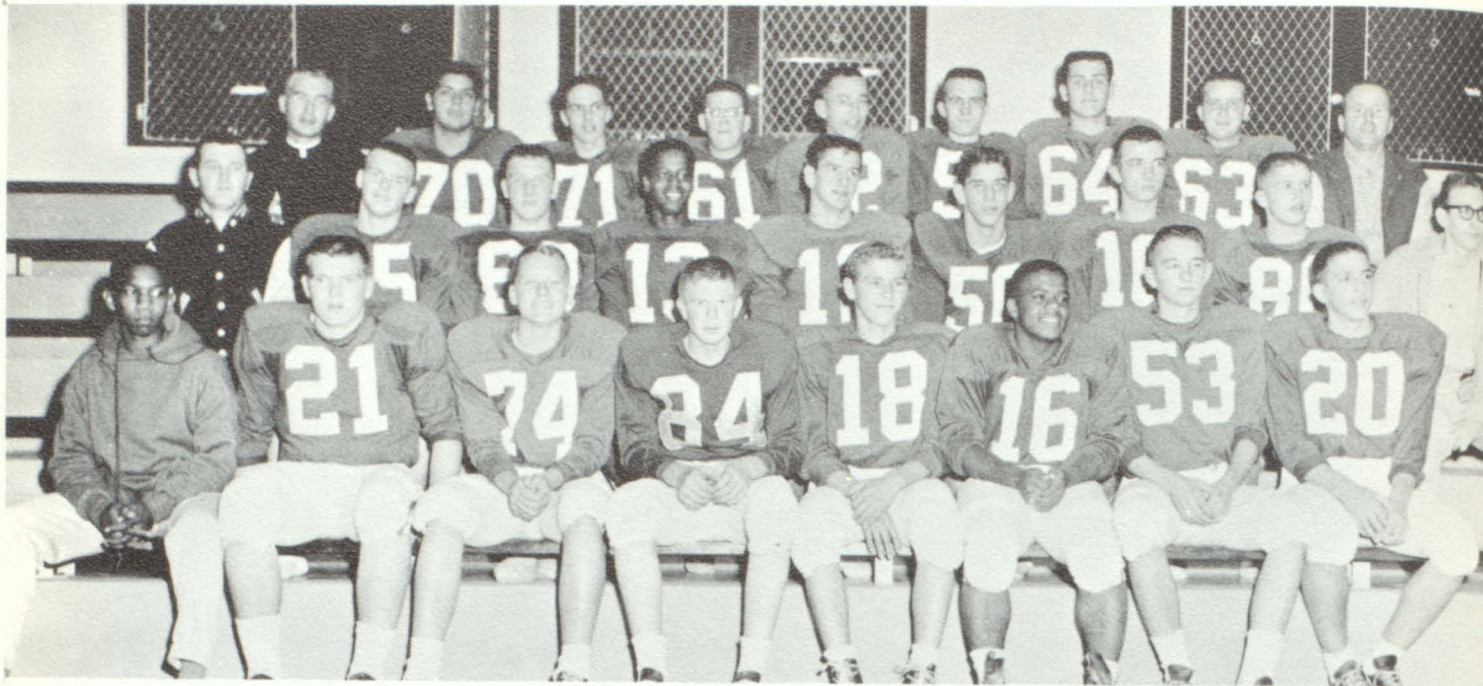


"Your exercise, your competitions, which are like happy parentheses between the monotony of study and daily work, ought to de-the spiritual and immortal side of your being."

—Pope John XXIII: The Pope Speaks.



# Football



TOP ROW: Father Kieran, M. Juarez, T. Brown, P. Baker, L. Morgan, M. Redmond, V. Totta, J. McMahon, and Coach Mintner. MIDDLE ROW: Coach Schmiedeler, L. Sweeney, D. Buckman, J. Jones, G. Barnes, M. Muehlberger, T. Keller, S. Salmon, and D. Hake, manager. FRONT ROW: Manager L. Simms, J. Harding, P. Chism, B. Gillespie, B. Muehlberger, J. Bartlett, E. Boyd, and B. O'Sullivan.

The year of '59 brought another trophy to Lillis High School. The co-operation of each team member, the help and understanding of the coaches, and the support of the student body gave the team the incentive to win. As a result of this, Lillis took co-championship in the Catholic League.

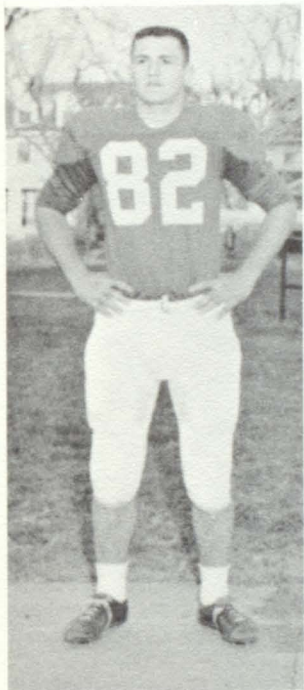
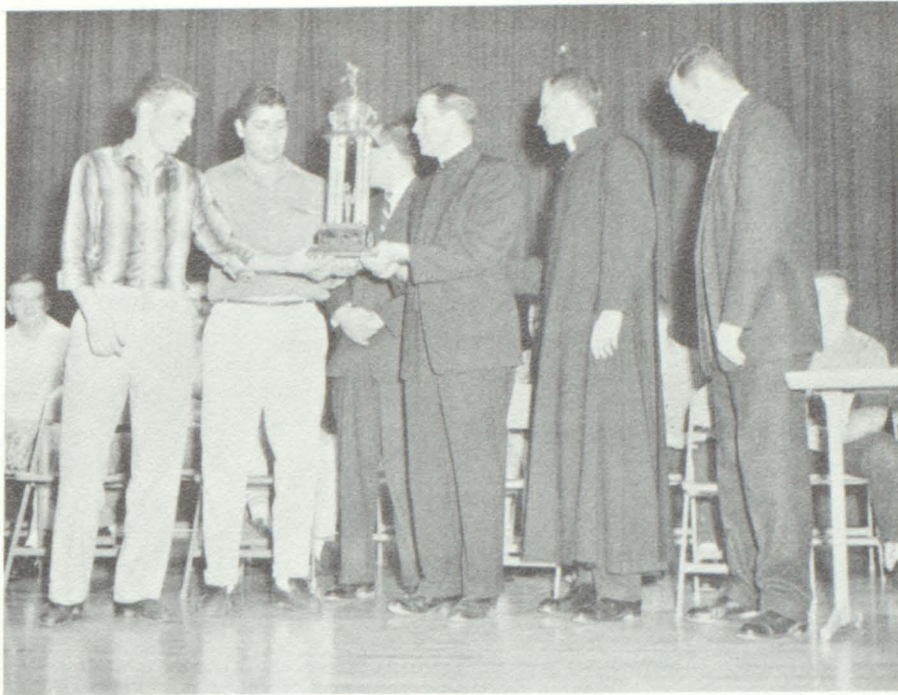
The scoreboard reads:

Lillis 6	Excelsior Springs	7
Lillis 6	Pem Day	25
Lillis 6	St. Joseph	12
Lillis 7	Hogan	* 7
Lillis 14	Pius X	*12
Lillis 12	Redemptorist	* 7
Lillis 25	Glennon	* 6
Lillis 27	St. Marys	* 6

\*League games



# Lillis Walks Off with Co-Championship



Vince Totta

The year of '59 also sent three of the football players to the All-Star Team: Vince Totta, Mike Juarez, Gary Barnes and Mike Muehleberger to the second team.

Mike Juarez



Mike Muehlberger



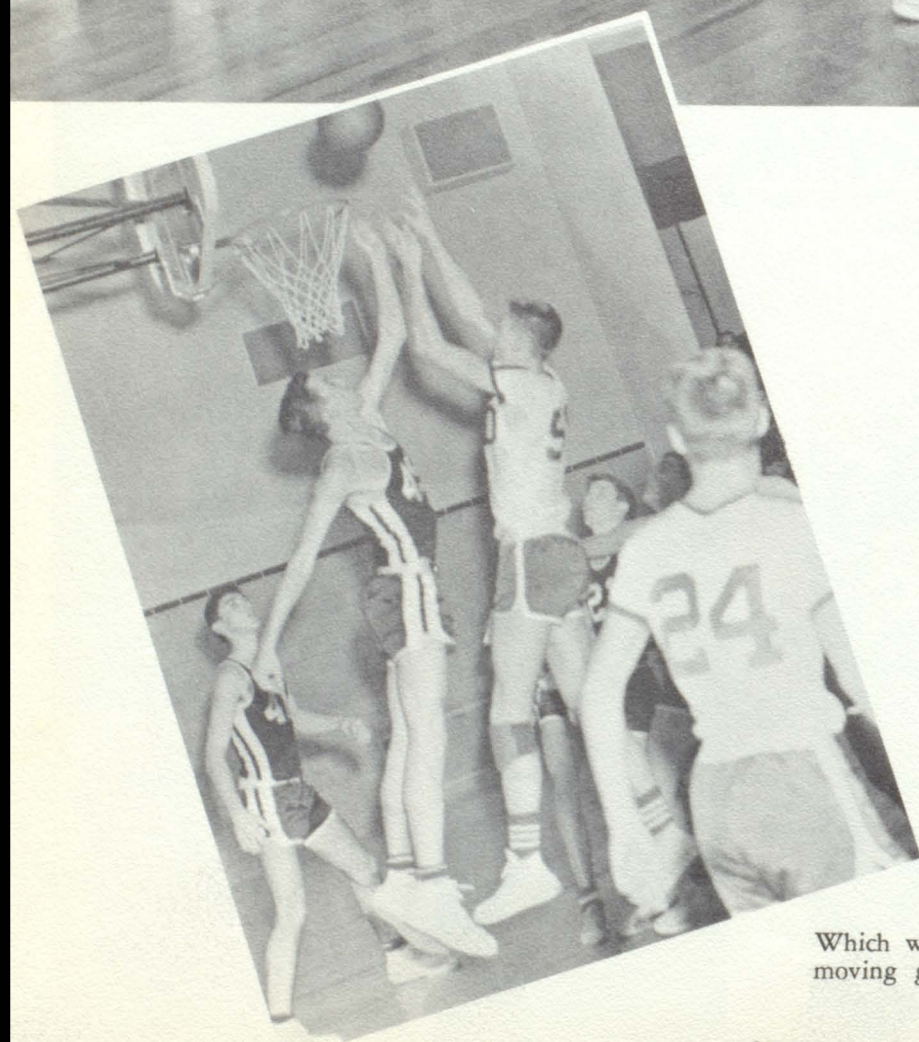
Gary Barnes



# Varsity



ABOVE: Tony Brown, Carl Chandler, Coach Schmiedler, Mike Sharkey, Joel Hurtado, Tim Crowley, and Don Dee.



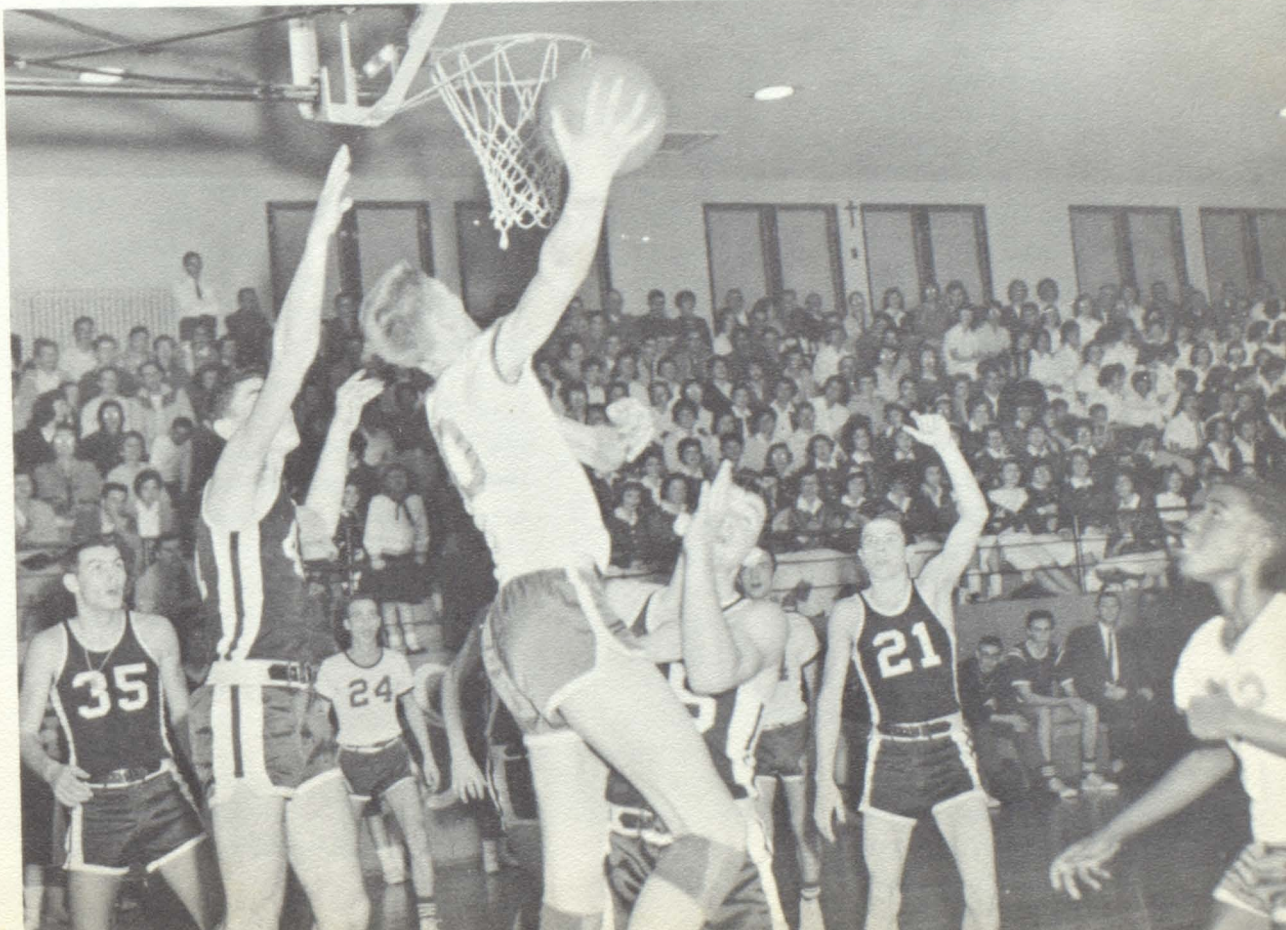
Which way did the ball fall during the fast moving game with Hogan?



## B Team

LEFT: Standing: David Zuchowski, Bruce Gillespie, Larry Sweeney, Ed Boyd, Pete Chism, Back: Virgil Jones, German Zuniga, and Ronnie Adrian.

One of the tense moments of the Lillis-Hogan game.





# Student

Donna Anderson	4930 Paseo	De 3-8708
Patricia Bachman	1715 1/2 West 39	Va 1-4038
Patrick Baker	3819 Wayne	Wa 3-0891
Sharon Bedsworth	1608 East 35	Wa 1-9861
Catherine Beebe	3528 Troost	We 1-3477
Carol Jo Bellante	1320 East 37	Va 1-7084
Diane Billiter	5331 Wabash	Hi 4-9591
Anthony Bisacca	7449 Chestnut	De 3-3919
Janet Blakey	2829 Bales	Wa 3-3227
Regina Boyle	3835 South Benton	Wa 3-5935
Francis Brady	2035 Jackson	
Fred Briseno	2319 Jarboe	Ba 1-2766
Anthony Brown	2732 Quincy	Wa 3-1846
Joseph Brown	2504 Chelsea	Wa 1-1976
Eileen Bryant	4731 Virginia	Va 1-1567
Frances Cabrini	3927 Mersington	Wa 3-1201
Roger Carter	4222 Flora	Wa 4-1784
Mary Ann Cook	4128 Forest	Va 1-7192
John Cornwell	1109 East 30	We 1-7254
Nolan Davis	Ozanam Boys' Home Martin City, Mo.	Wi 2-3448
Thomas Dorrian	635 West 39 St. Terrace	Va 1-8877
Linda Farrell	2022 Drury	Ch 1-6846
Patricia Farris	3536 Montgall	Wa 1-4694
Patricia Feters	3711 Paseo	Wa 4-3915
Anthony Fowler	7444 Belleveiw	De 3-3757
Julia Franzen	3316 Park	Wa 4-3826
Christine Garcia	3602 Agnes	Em 3-4282
Rosalie Garcia	11105 Elmwood	So 3-0518
Rudy Garcia	800 Valentine Road	Lo 1-2303
Patricia Gibbons	4127 Tracy	We 1-2729
Dolores Glynn	4232 Harrison	We 1-2132
Pamela Goade	934 West 33 Terrace	We 1-9483
Carmen Gonzales	4422 Fairmount	Va 1-4794
Thomas Gorman	4529 Lawn	Hi 4-2390
Janice Gossey	3123 Pennsylvania	Lo 1-7877
Kathleen Gregory	3602 Flora	Wa 1-9090
Charles Haefling	7401 Virginia	Hi 4-0686
Curley Haines	2114 Troost	Gr 1-8255
Dennis Hake	124 West Linwood	Va 1-0645
Davetta Hardy	3907 East 23 Terrace	Hu 3-2996
Emery Harmon	4246 Wayne	Wa 3 1101
Judy Hayes	315 East 78 Terrace	Em 1-5722
Joyce Hueser	3921 Terrace	
Joel Hurtado	621 East 5	Ba 1-9352
Mihael Juarez	3741 Brooklyn	Wa 3-9398
Carol Kaiser	2803 East 39	
Patricia Kandlbinder	5315 Olive	Ja 3-0939
Margaret King	4229 Euclid	Wa 1-0951
Virginia Kneib	4338 Fairmount	Va 1-4219
Rose La Sala	406 Prospect	Ch 1-9481
Marjory Leakey	4202 Roanoke Road	Je 1-9432
Donna Legate	3928 Olive	Wa 3-8183



# Directory

Kate Long	3946 Clark	Lo 1-1238
Kathleen Lynch	4224 Harrison	Lo 1-4224
James Lyons	4409 Flora	Wa 3-9021
Mary Jo McLearn	8621 Cambridge	Fl 6-3986
Jack McMahon	6601 Harris, Raytown, Mo.	Fl 3-0166
Thomas Madigan	4020 Tracy	Va 1-2467
Joan Maloney	54 East 53 Terrace	Ja 3-5161
Lonnie Morgan	Ozanzm Boys' Home Martin City, Mo.	Wi 2-3448
Glynn Morrison	6231 Bellefontaine	Hi 4-9667
Marlyn Mulloy	2328 Denver	Be 1-1429
Mary Jo Myers	2242 Brighton	Be 1-6787
Larry Neimeyer	2626 Chelsea	Wa 3-8056
James Noll	3708 Virginia	Va 1-5802
Dorothy Oelklaus	4332 Charlotte	We 1-5353
James O'Neill	3626 Flora	Wa 4-1980
Margaret O'Sullivan	5729 Virginia	Em 3-1067
Earl Over	4427 Fairmount	Je 1-6505
Sandra Overman	2416 Kensington	Be 1-2241
John Papiernik	4506 Olive	Wa 4-5371
Judy Parker	2015 Linwood	Wa 4-4735
Sylvia Peacher	8611 Stark	Fl 6-2958
Catherine Pickard	4145 Clark	Lo 1-9383
Beryl Pretzl	4117 Harrison	Lo 1-6250
Rita Prevost	2240 Poplar	Ch 1-7116
Patrick Quirk	7631 Jarboe	Ja 3-8279
Diane Rathbun	3705 Highland	Wa 3-1212
Michael Redmond	5602 Michigan	Em 1-4062
Evelyn Renne	4012 Michigan	Wa 3-1608
Jack Riley	3834 Troost	Je 1-7792
Rennette Riley	2200 Vine	Ch 1-2623
Bill Roberts	1708 East 67	Ja 3-5885
Rita Rudolph	4140 McGee	Je 1-8745
Larry Ryan	2115 East 59	De 3-0972
Patricia Ryan	3619 Woodland	Wa 3-1754
Michael Sabin	3928 Garfield	Wa 4-2255
Steve Salmon	8205 Wayne	De 3-0839
Rosemary Schnepf	1400 Linwood	Wa 1-8100
Tim Scholl	5425 Euclid	Ja 3-9258
Sharon Scott	2819 Linwood	Wa 4-3889
Bruce Sharkey	3922 Campbell	We 1-6817
Malee Shaw	311 West 13	Ba 1-0267
Maurine Sheeley	4607 State Line	We 1-4018
Thomas Sloan	49 East 53 Terrace	Hi 4-6755
Jerry Smith	4506 Agnes	Cl 2-3559
James Strohm	1317 East 40	Lo 1-3535
Terry Taff	3923 Genessee	Lo 1-5667
Vince Totta	11612 East 39 Independence, Mo.	Cl 4-8911
Cecelia Trabon	911 East 76	Hi 4-8277
Larry Walsh	806 East 41	Lo 1-6824
Ann Winterhalter	3411 Cedar Independence, Mo.	Fl 6-0471



CONGRATULATIONS

To

The 1960 Lillislog Staff

For Another  
Outstanding Annual

**ROLLAND SCHOOL STUDIO**

1118 McGee

Official Photographers  
for the

LILLISLOG

Compliments of

**Red Dot Potato Chips**

RED DOT FOODS, INC.

**Business Men's Assurance**

"On the Union Station Plaza"

215 W. PERSHING

BA 1-6300



**Zarda**  
BROTHERS  
**DAIRY** INC

Quality Farm Fresh Dairy Foods  
Being enjoyed by Lillis High Students



## Linwood State Bank

Established 1922

"Your Neighborhood Bank"

Commercial and Savings Accounts

1120 LINWOOD

WE 1-1700

## Green Jewelry

Headquarters for

Club Pins — Crested Stationery

Official Lillis High School Rings

1010 WALNUT

VI 2-6191

Compliments

of

## Vess Beverages

## Gerald McManus Chemical Co.

Wax Cleaners — Disinfectants

Soaps — Mops — Brushes

Oil Absorbants

306 BROADWAY

VI 2-5192

Let

## STELLA'S FLOWERS

"Say It For You"

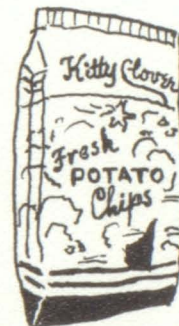
3906 Troost Avenue

Flowers for All Occasions

Weddings a Specialty

WE 1-4986

Nite VA 1-2602



Enjoy

"Floating Light"

**Kitty Clover**  
**POTATO CHIPS**

5c to 69c

## I Donelly Company

Complete Line of

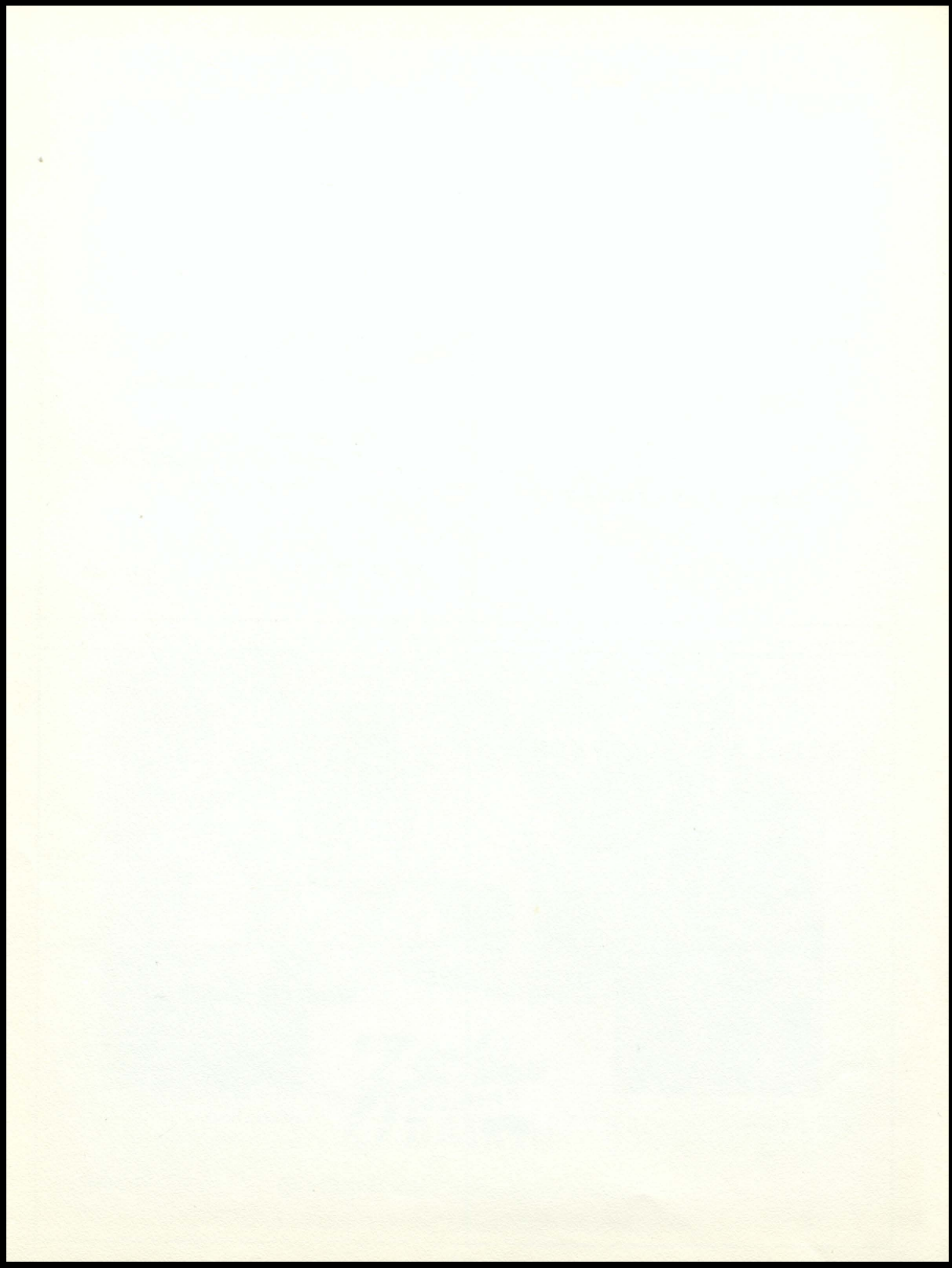
Catholic Religious Articles and

Catholic Books

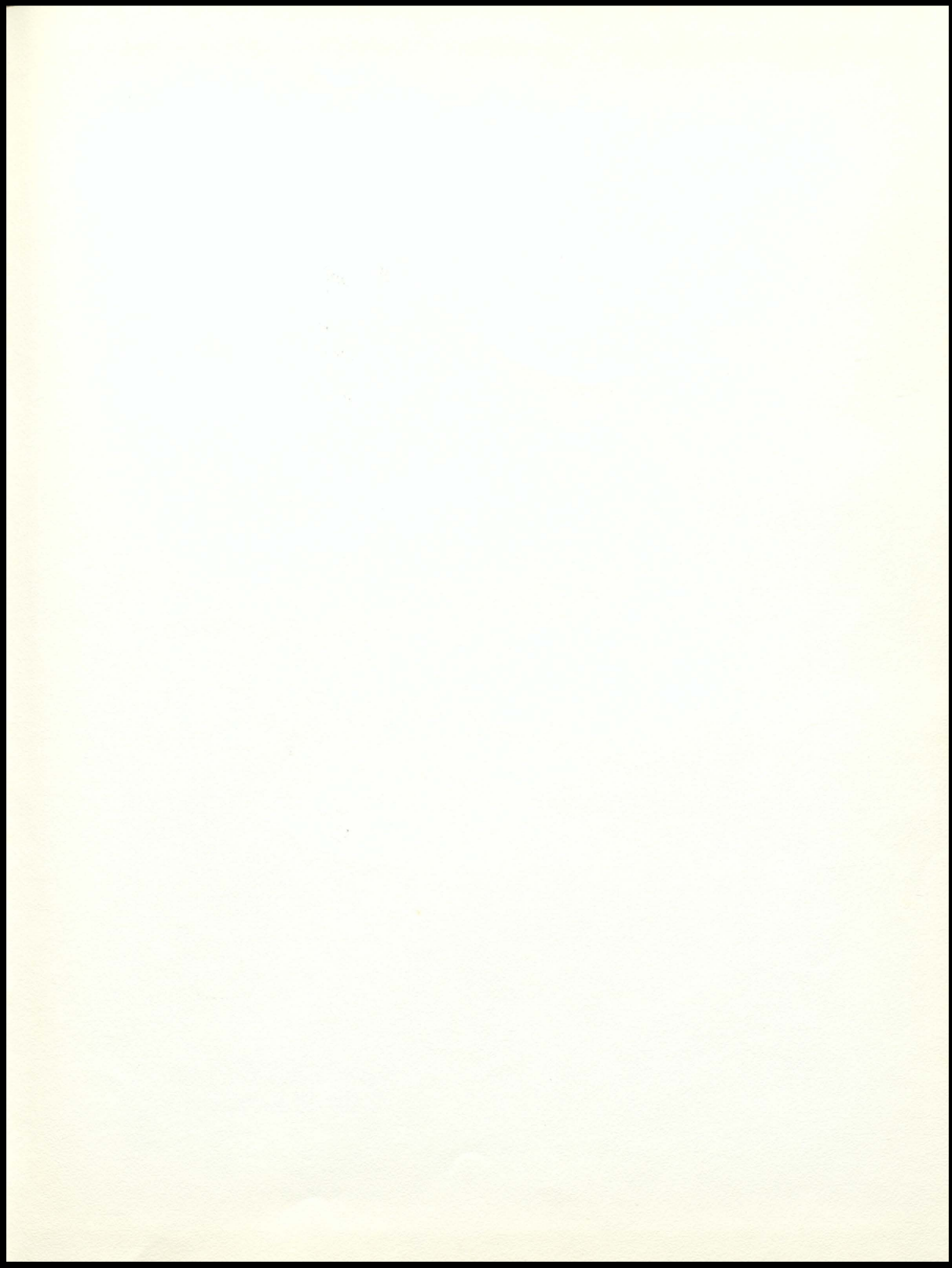
1121 McGEE

VI 2-0942

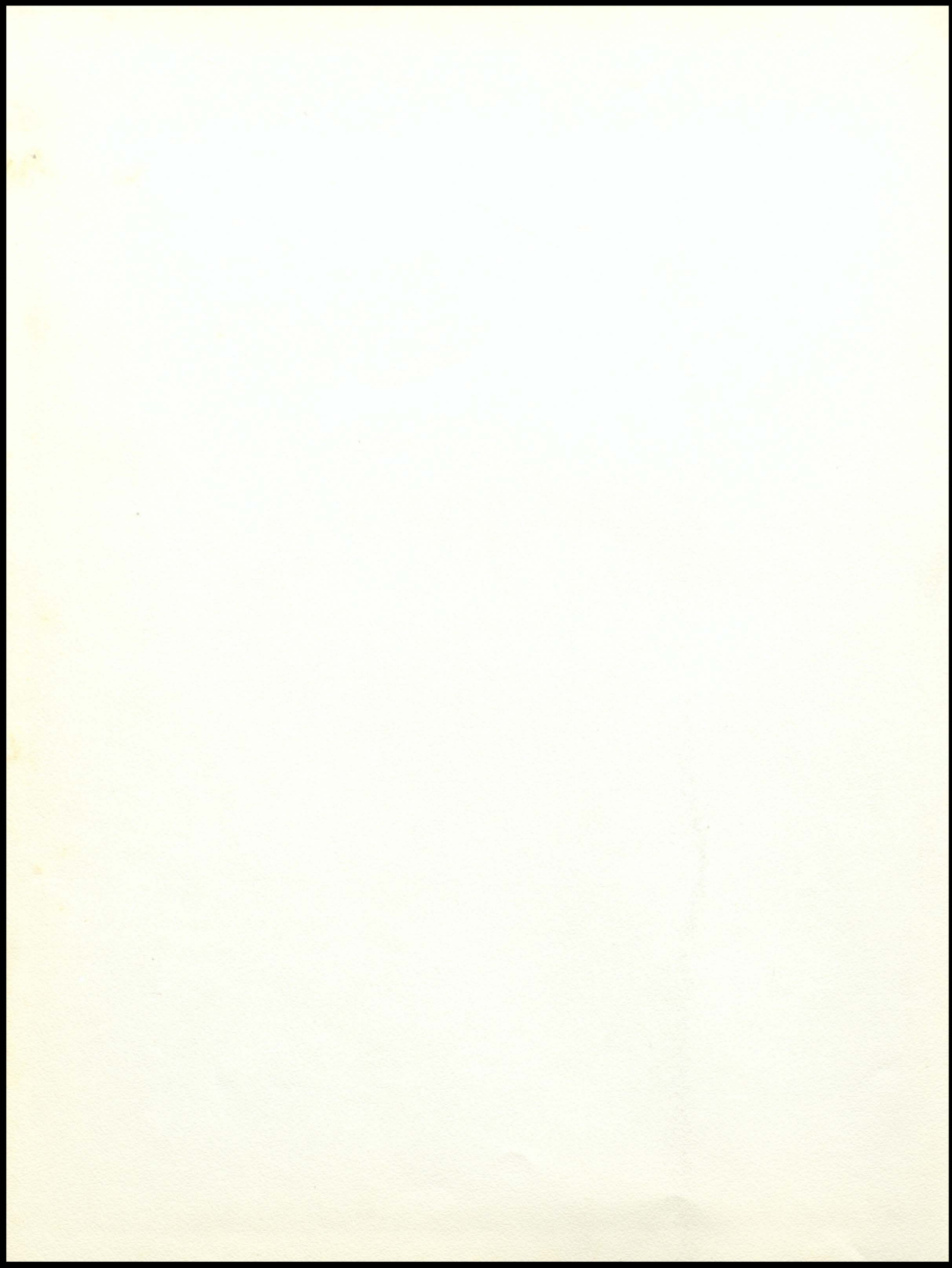
















KANSAS CITY 6, MISSOURI  
TORONTO 1, ONTARIO

LITHO. IN U.S.A. BY YEARBOOK HOUSE













**CHEARBOCK HOUSE**  
KANSAS CITY 6, MISSOURI  
TORONTO 1, ONTARIO