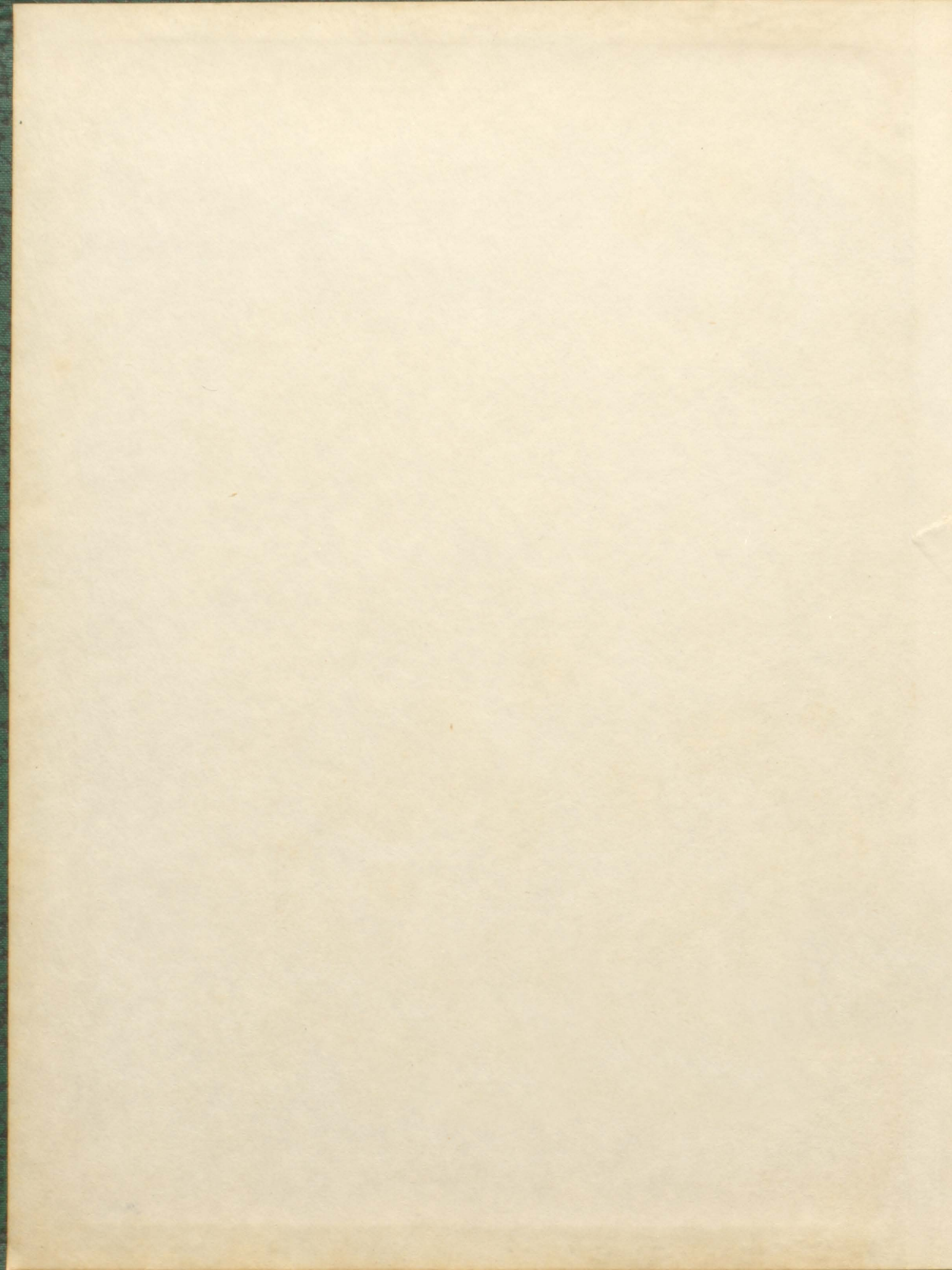




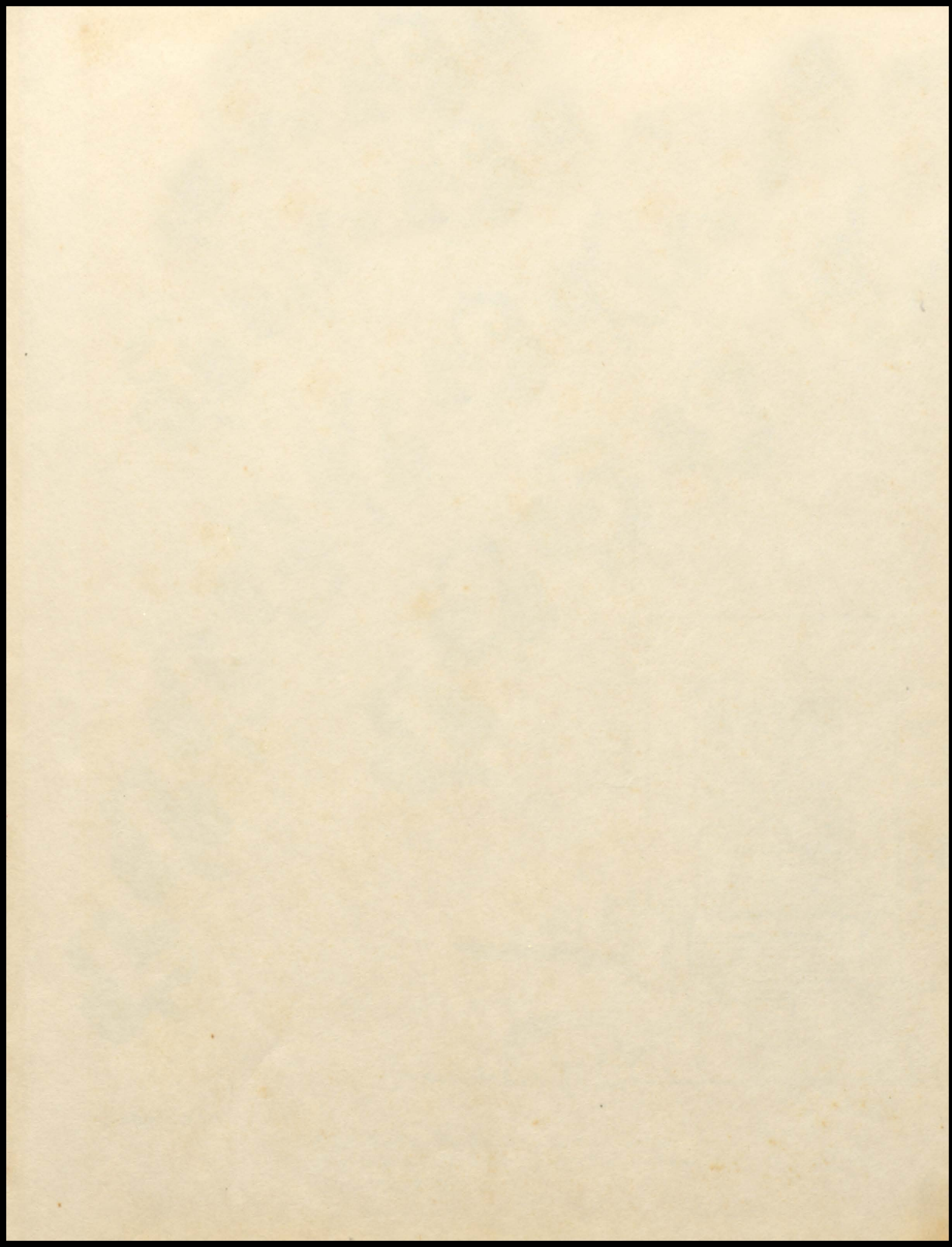
1  
9  
5  
4

LILLISLOG

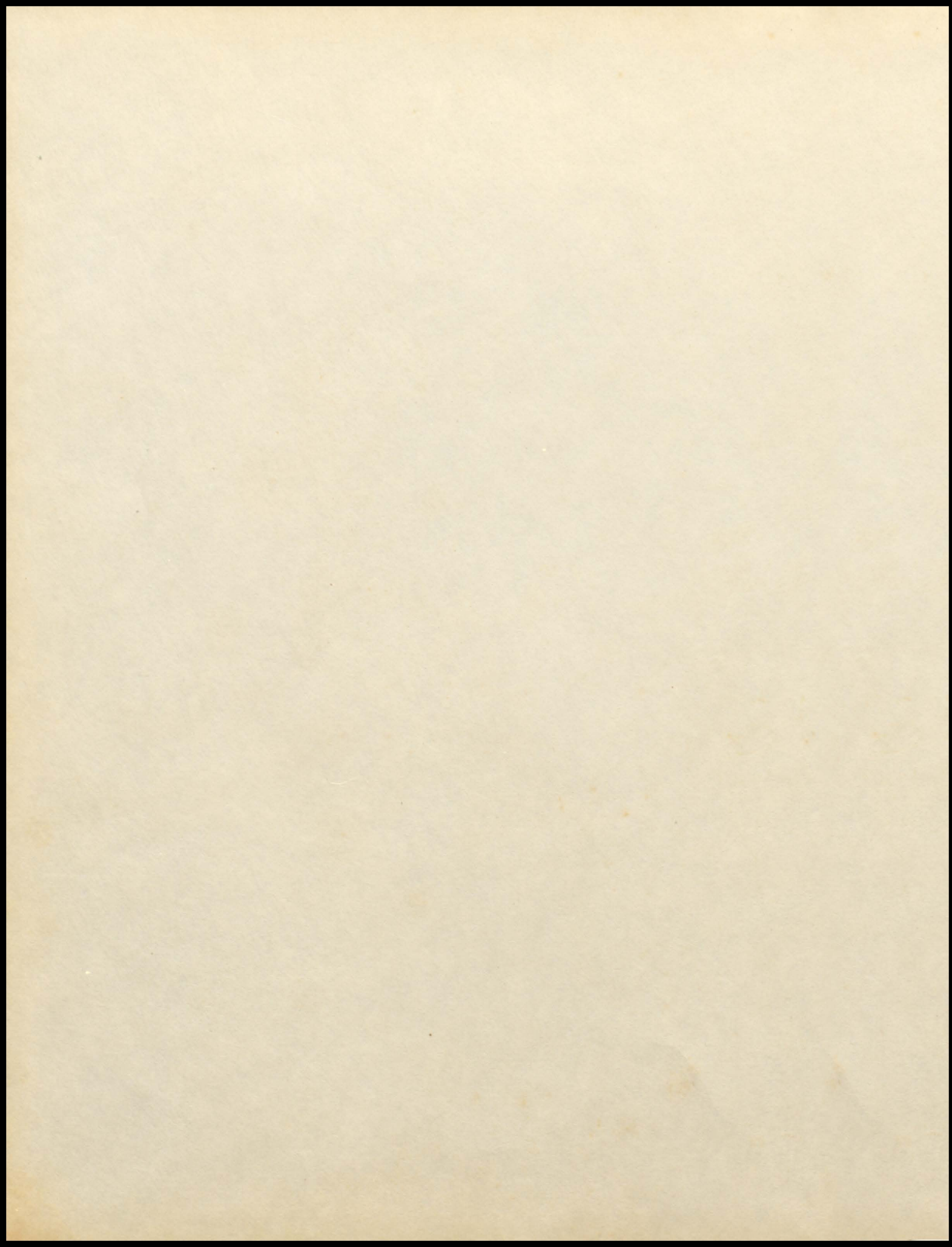








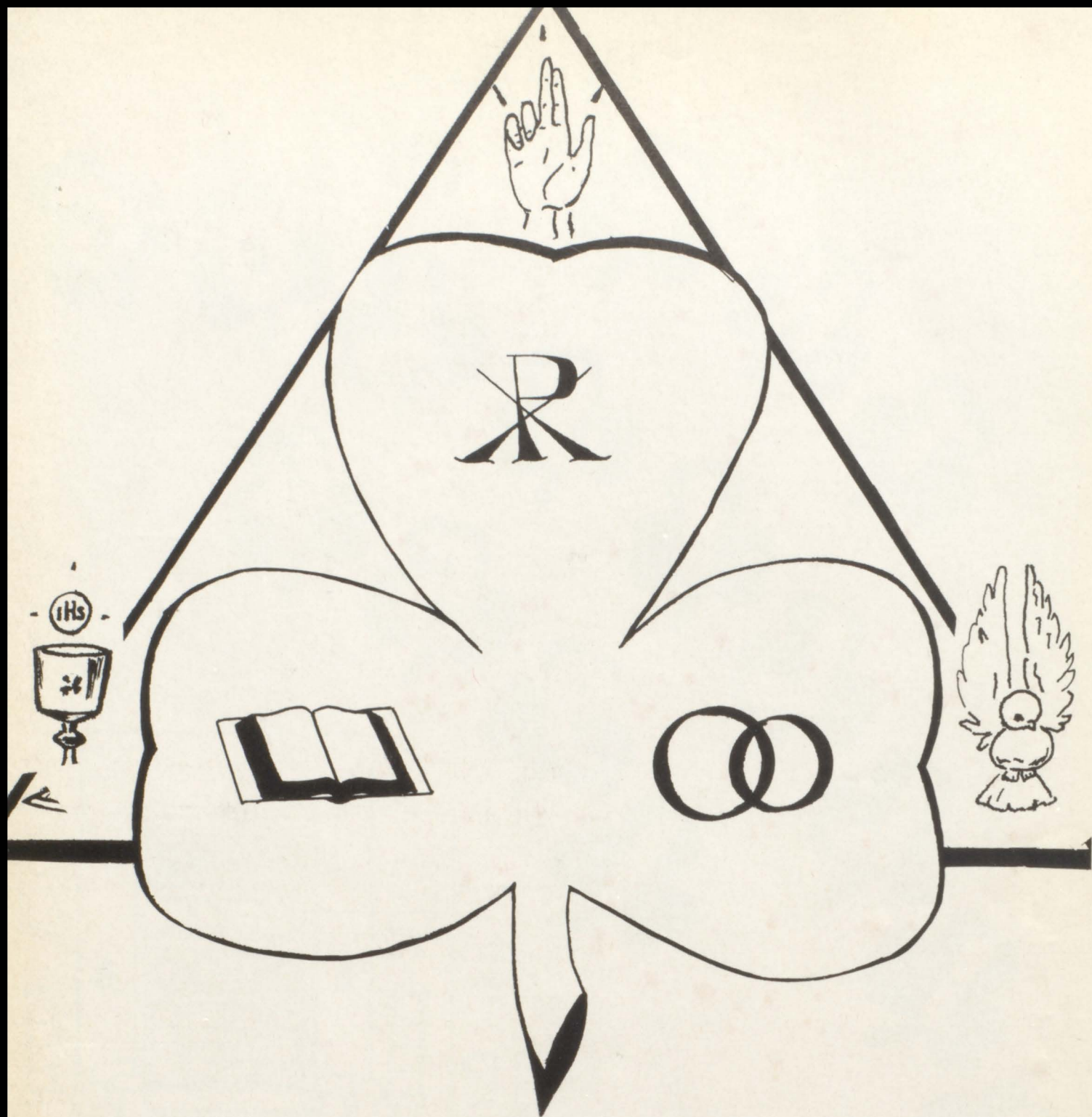










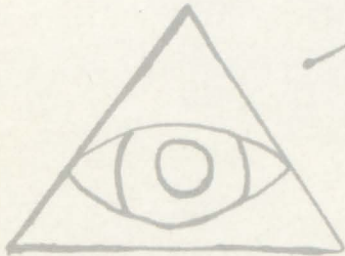


TO THE MOST BLESSED TRINITY, IN THANKSGIVING FOR THE OPPORTUNITY WE HAVE HAD OFFERED US TO OBTAIN A THREEFOLD EDUCATION, SPIRITUAL, SCHOLASTIC, AND SOCIAL, WE, THE SENIORS OF NINETEEN FIFTY FOUR, DEDICATE THIS YEARBOOK.



# CONTENTS

Title Page	1
Dedication	2
Contents	3
Bishops	4
Faculty	5
Seniors	7



## Fall at Lillis

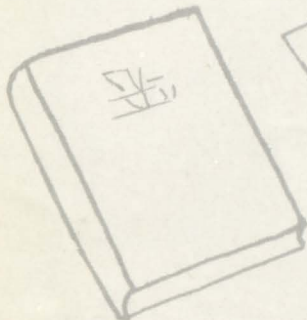
September, October, November

	Page
Spiritual Activities	26
Scholastic	32
Social	34

## Winter at Lillis

December, January, February

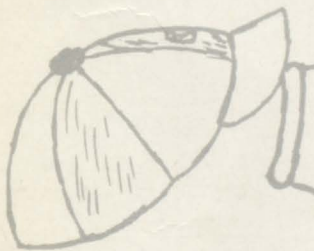
	Page
Spiritual Activities	50
Scholastic	53
Social	56



## Spring at Lillis

March, April, May

	Page
Spiritual Activities	70
Scholastic	74
Social	78



Patrons	98
Senior Directory	100





MOST REV. EDWIN V. O'HARA  
Bishop of Kansas City



MOST REV. JOSEPH MARLING  
Auxiliary Bishop of Kansas City

To the vision of the Most Rev. Edwin V. O'Hara, Bishop of the Diocese of Kansas City, Missouri, Lillis High School owes its existence. For one of the first undertakings of His Excellency was the erection of several Catholic high schools to provide a Christian training for the youth under his care.

To the constant interest and care of Bishop O'Hara and of the Most Rev. Joseph Marling, Auxiliary Bishop of Kansas City, Lillis owes its continued successful operation. For the guidance of the youth under their jurisdiction is one of the prime concerns of their administration. The opportunity to have priest religion instructors for every class, the privilege of participating in city-wide spiritual, scholastic, and social activities, the extensive guidance program, all of these are due to the foresight of the Shepherds of whose flock Lillis forms a part.





REV. JOSEPH SULLIVAN  
Diocesan Superintendent of Schools



REV. M. F. McAULIFFE  
Junior Religion Instructor  
Diocesan Director of Vocations  
Moderator of Lay Apostles



Vice-Principal

REV. REGIS HICKEY, O.S.B.  
School Chaplain  
Athletic Director  
Senior Boys' Religion Instructor  
Senior English Instructor

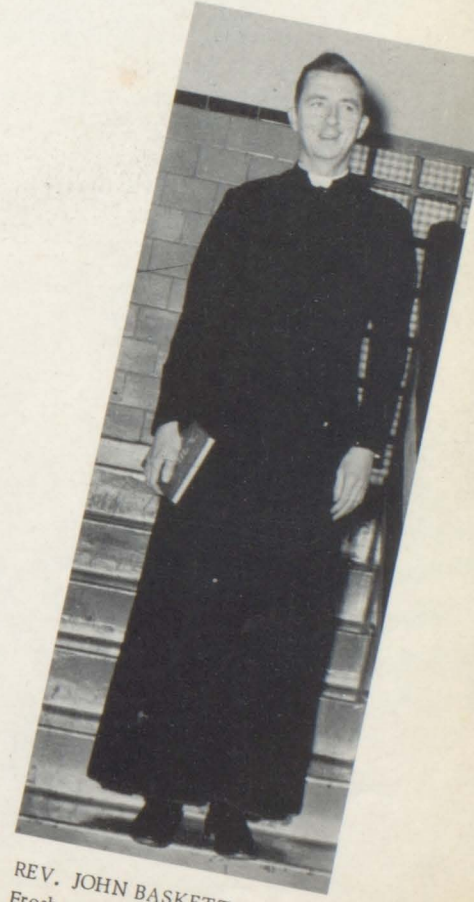
## *Detonaters Of Lillis' Spiritual Growth*



REV. FRANCIS A. WEIR  
Sophomore Religion Instructor



REV. JAMES CONWAY, O.P.  
Senior Girls' Religion Instructor



REV. JOHN BASKETT  
Freshman Religion Instructor



# Faculty



Sister Therese Marie . . . . .	Principal	
Sister Andrea . . . . .	American History, English	302
Sister Aniceta . . . . .	English, Band, Glee	405
Sister Clement Marie . . . . .	Glee, World History	
Sister Mary David . . . . .	Glee, Sociology	200
Sister Dolores . . . . .	Shorthand, Typing	402
Sister Mary Donald . . . . .	Clothing, English	406
Sister Egberta . . . . .	Art, World History	205
Sister Emerich . . . . .	Shorthand, Bookkeeping	401
Sister Fabiola . . . . .	Printing, English	202
Sister Mary Jude . . . . .	General Science, Math	304
Sister Kieran . . . . .	Library	
Sister Lillian . . . . .	English	
Sister Loretta . . . . .	Foods, Math	403
Sister Mauricita . . . . .	Math, English	404
Sister Maxine . . . . .	Physics, Chemistry	303
Sister Patrice . . . . .	English, Latin	201
Sister Richard . . . . .	Biology	306
Sister Sylvester . . . . .	Speech	203
Sister Terrance . . . . .	Spanish, Journalism	204
Sister Ancilla . . . . .	Cafeteria	
Sister Boniface . . . . .	Cafeteria	
Sister Edmunda . . . . .	Cafeteria	

**POWER**

**BEHIND**

**THE**

**BOOKS**



# LAY LEADERS

# O F L I L L I S



COACH JOHN SCHMIEDELER  
Basketball and Baseball



COACH JOE MINTNER  
Football and Track



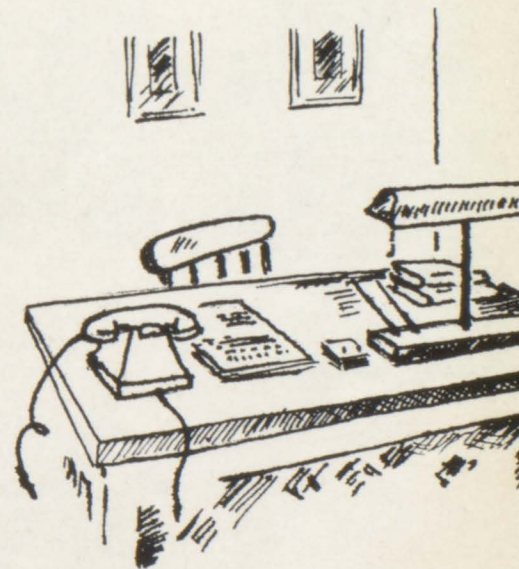
MISS KENNING  
Physical Education Instructor



MRS. TESS GIBSON  
School Nurse



SERGEANT MARTIN USAF  
Marching Band Instructor







Talking over their experiences of the last four years as they leave for the last time are these graduates, Joyce Conran, Pat Kneaves, Joe Jones, Jim Kalmus, and Joe Cook.

## SENIORS OF 1954



**JOSEPH GLYNN**  
Senior Class President; Student Council Vice-President 4; Sodality 2, 3, 4; "L" Club 3 (treasurer 4; Football 1, 2, 3, 4; Basketball 1, 2; Glee Club 1, 2, 3, 4; Operetta 3, 4; Prom Committee Chairman 3; Lillislog 3, 4; Sports Editor 4; Lillis-trator 3, 4; Popularity Contest 4; Quill and Scroll 3, 4; Track 2, 3.



**MICHAEL BURASCO**  
Senior Class Vice-President; Sodality 3, 4; "L" Club 4; Football 1, 2, 3, 4; Basketball 3; Glee Club 1, 2, 3; Operetta 3; Homeroom Leader 2; Student Council 2; Popu-larity Contest 2, 3, 4.



**MARILYN ETH**  
Senior Class Secretary; Sodality 2, 3, 4; Pep Club 4; National Honor 3, 4; Glee Club 1, 2; Religion Contest 2, 3; Speech Con-test 2, 3; Debate 1, 2; Homeroom leader 3; Stud-ent Council 3, 4; Lillis-trator Editor 4; Popularity Contest 4.



**JOHN O'NEILL**  
Senior Class Treasurer; St. Patricks Play 1; "L" Club 4; Basketball 1, 2, 3, 4; Track 3; Glee Club 1, 2, 3.



BONNIE ARMOUR  
Sodality 1, 4; Glee Club  
4.



SUE ADAMS  
Sodality 2, 3, 4; Pep  
Club 2, 3, 4; Operetta  
3, 4; Student Council  
4; Majorette, 2.



MARY ANN ALEXANDER  
Latin Club President;  
Speech 4; Book Review;  
I Speak For Democracy.



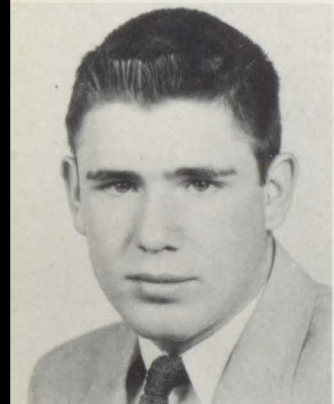
SALLY ALLEGRI  
Sodality 1, 2, 3, 4; Pep  
Club 2, 3, 4; Glee Club  
1, 2, 3, 4; Operetta 3, 4;  
Cheerleader 2, varsity  
3, 4; Popularity Candidate  
1, 2, 3, 4.



JACK ALLAN  
Glee Club 1, 2, 3, 4;  
Operetta 3, 4.



EDWARD ARTH  
Football 1, 2; Glee  
Club 1, 2.



JODY BALESTRERE  
Sodality 3, 4; Senior  
Play 4; Prom Chair-  
man (decorations);  
Homeroom (co) Leader,  
4; Lillislog 4; Child-  
rens Theater 4; Quill  
& Scroll 4.



WARREN BECKER  
Sodality 2, 3, 4; Foot-  
ball 2, 3, 4; Glee Club  
2, 3, 4; Operetta 3, 4;  
Religion Contest 3;  
Speech Contest 2, 3, 4;  
Homeroom Leader 2;  
Student Council 2; "L"  
Club 3, 4; Lillislog As-  
sociate Editor 4; Lillis-  
trator 4; Band 2; Ameri-  
can Legion Oration 3, 4.





JERRY BIRITZ

"L" Club 4; Basketball  
1, 2, 3; Glee Club 1, 2;  
Homeroom Leader 1.



MARY JO BOWMAN

Sodality 3, 4; Pep Club  
2, 3, 4; Glee Club 3, 4;  
Operetta 3, 4.



RICHARD BELL

Speech Contest 1, 2, 3,  
4; Religion Contest 1,  
2, 3.



LARRY BOWMAN

Sodality 3, 4; Operetta  
3, 4; Glee Club 3, 4.



TONI BONELLO

Sodality 2, 3, 4; Pep Club  
2, 3, (pres.) 4; Glee Club  
1, 2, 3, 4; Operetta 4;  
Speech Contest 4; Student  
Council 4.



JIM BROWN

Sodality 1, 2, 3, 4; Foot-  
ball 2; Glee Club 1, 2, 3,  
4; Operetta 3, 4; Religion  
Contest 2; Childrens  
Theater 3; Band 1.



JIM BRINK

Sodality 3, 4; Senior Play  
4; Operetta 3, 4; Band 1,  
2, 3, 4.



MARY KAY BRINKOETTER

Sodality 1, 2, 3, 4; Pep  
Club 2, 3, 4; Glee Club  
1, 2, 3, 4; Operetta 3, 4.



MARY ELIZABETH BROWN  
Sodality 3, 4; Pep Club  
2, 3, 4; Operetta 3, 4;  
Speech Contest 3; National  
Honor 3, 4; Glee Club 1, 2,  
3, 4.



SHIRLEY BURKE  
Sodality 3, 4; Glee Club  
1, 2, 3, 4; Operetta 3, 4.



DOLORES BROWNFIELD  
Sodality 4; Pep Club 4;  
Glee Club 4.



MARY LOUISE CHANDLEE  
Sodality 3, 4; Glee Club  
1, 2, 3, 4; Operetta 3, 4.



DARLENE CIPOLLA  
Sodality 1, 2, 3, 4; Glee  
Club 1, 2, 3, 4; Pep Club  
4; Operetta 4.

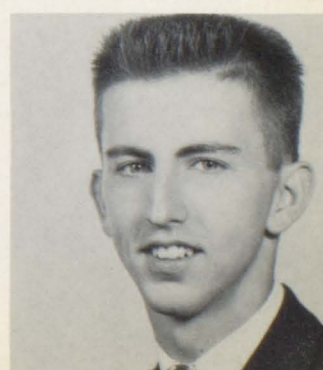


KENNETH CLARK  
Glee Club 2.

EILEEN CLOSSICK  
Sodality 2, 3, 4; St. Patri-  
cks Play 1.



EL AINE CABRINI  
Pep Club 2, 3, 4; Sodality  
1, 2, 3, 4; Glee Club 1, 2,  
3, 4; Operetta 3, 4; Home-  
room Co-Leader 4.







JOYCE CONRAN  
Sodality 2, 3, 4; Glee  
Club 1, 2; Operetta 3;  
Lillislog 3; Lillistrator  
3; Debate 1.



JOSEPH COOK  
"L" Club 3, 4; Football  
1; National Honor 3, 4;  
Glee Club 1, 2; Lillis-  
log 4; Lillistrator 4;  
Golf 2, 3.



BARBARA COX  
Sodality 2, 3, 4; Pep Club  
2, 3, 4; Glee Club 1, 2, 3,  
4; Operetta 3, 4.



JOHN CRASS  
Sodality 4; Glee Club 1,  
2; St. Patrick's Play 1.

MARY LOU CRESWELL  
Sodality 1, 2, 3, 4; Pep  
Club 2, 3, 4; National  
Honor 3, 4; Glee Club  
1, 2, 3, 4; Operetta 3,  
4; Homeroom Leader 2;  
Student Council 2.



JOAN CRUSOE  
Sodality 2, 3, 4; Pep Club  
2, 3, 4; National Honor  
3, 4; Glee Club 1, 2, 3, 4;  
Operetta 4; Lillistrator 4;  
Lillislog 4.



MARY CUMMINGS  
Sodality 2, 3, 4; Glee Club  
1, 2; St. Patricks Play 1.

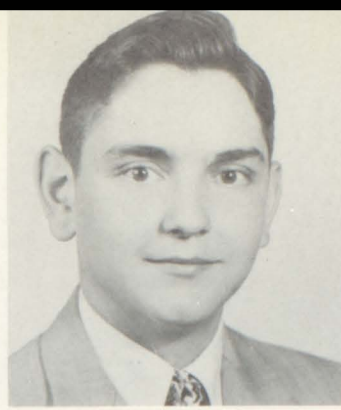


ROSEMARY CURLEY  
Sodality 3, 4; Glee Club  
1, 2.





MARY ELIZABETH DOBSON  
Sodality 1, 2, 3, 4; Senior Play Stage Mgr. 4; Glee Club 1, 2, 3, 4; Operetta 3, 4; Camera Club 3; Childrens Theatre 3.



JOHN DORRIAN  
"L" Club 3, 4; Sodality 3, 4; Football 1, 2, 3, 4; Basketball 1, 2, 4; Glee Club 2, 3; Operetta 3; Homeroom Leader 3; Student Council 3; Track 2; Baseball 3.



JAMES DAVIS  
Glee Club 3; Operetta 3, 4; Band 4.



DENISE DUFFY  
Sodality 3, 4; Pep Club 2, 3; Glee Club 2.

DONALD EBER  
Sodality 3, 4; "L" Club 4; Football 1, 3, 4.



SHIRLEY GALLAGHER  
Sodality 1, 2, 3, 4; Pep Club 2, 3, 4; Cheerleader 1, 2, Varsity 3, 4; Senior Play 4; Glee Club 1, 2, 3, 4; Operetta 3, 4; Religion Contest 1, 3; Quill & Scroll 4; Lillislog 4; Lillistrator 4; National Honor Society 3, 4; Popularity Candidate 3; Homeroom (co) Leader 3.



KATHERINE FERREL  
Sodality 1, 2, 3, 4; Pep Club 2, 3, 4; Glee Club 1, 2, 3, 4.



RONALD EBER  
Sodality 3, 4; "L" Club 4; Football 1, 2, 3, 4; Glee Club 1, 2; Operetta 3; Homeroom (co) Leader 3; Lillislog 4; Lillistrator 4.





JUDY GILL  
Sodality 1, 2, 3, 4; Pep  
Club 2, 3, 4; Glee Club  
1, 2, 3, 4; Operetta 3, 4;  
Homeroom Leader 1;  
Student Council 1.



CLAIRE GILLISPIE  
Sodality 3, 4; Pep Club  
2, 3, 4; Glee Club 1, 2,  
3, 4; Religion Contest  
1; Speech Contest 2, 3,  
4; Childrens Theater 3.



MICHAEL GIBBS  
Sodality 3, 4; Glee Club  
3, 4.



JUDY GLADIEUX  
Pep Club 3, 4; Sodality  
3, 4; Glee Club 4; Oper-  
etta 4; Childrens Theater  
3.

MARY CAROL GRACE  
Sodality 2, 3, 4; Pep Club  
2, 3, 4; Glee Club 2, 4;  
Operetta 4.



JAMES HARRIS  
St. Patricks Play 1; Glee  
Club 1, 2.



JOE GREGG  
Homeroom (co) Leader  
4.



ROSEMARY GYULAY  
Sodality 1, 2, 3, 4; Pep  
Club 2, 3, 4; Seniro Play  
4; Glee Club 1, 2, 3, 4;  
Operetta 3, 4; Prom Chair-  
man (Invitations) 3;  
Childrens Theater 3.



DON HOBERECHT  
Glee Club 1, 2, 3, 4; Band  
1, 2, 3, 4.



JO ANN HESSEE  
Sodality 2, 3, 4; Pep Club  
2, 3, 4; Glee Club 2, 4.

JAMES HORNER  
Sodality 2, 3, 4; Glee Club  
4; Operetta 4; St. Patrick's  
Play 1.



BETTE HOWARD  
Sodality 2, 3, 4; Pep Club  
2, 3, 4; Glee Club 3; Lillis-  
log 4; Lillistrator 4.

JOANN JAKOBE  
Sodality 1; Pep Club 2, 3,  
4; Glee Club 1, 2; Oper-  
etta 3; Cheerleader 1.



VIRGINIA JENKINS  
Sodality 1, 2, 3, 4; Pep Club  
3, 4; Glee Club 1, 2.

KENNETH JOHNSON  
Glee Club 1, 2.



CORA SUE JOHNSON  
Pep Club 2, 3, 4; Glee Club  
1, 2; St. Patrick's Play 1.



EVELYN JONES

Sodality 1, 2, 3, 4; Pep Club 2, 3; Glee Club 1, 2, 3, 4; Operetta 3, 4; Speech Contest 2; Band 1, 2.



ROBERT JOHNSON  
Glee Club 1, 2.

JOSEPH JONES

Sodality 2, 3, 4; Glee Club 1, 2, 3, 4; St. Patrick's Play 1; Operetta 3, 4.



JUDY JOYCE

Sodality 3, 4; Pep Club 3, 4; Glee Club 4; Operetta 3, 4; Lillislog 4; Lillistrator 4.

JOSEPH KELLY

Sodality 3, 4; "L" Club 4; Basketball 3, 4; Baseball 3; Golf 4; Glee Club 3; Operetta 3.



JAMES KRAMMER

Sodality 3, 4; "L" Club 4; Football 3, 4; Glee Club 2, 3, 4; Operetta 3; Speech Contest 3, 4.



MICHAEL KENNEDY

Sodality 3, 4; Glee Club 1, 2, 3, 4; Operetta 3, 4.



PATRICIA KNEAVES

Sodality 1, 2, 3, 4; Pep Club 2, 3, 4; Glee Club 1, 2, 3, 4; Operetta 3, 4; Lillislog 3, 4; Lillistrator 3, 4.





MARY C. LOSCHKE  
Sodality 1, 2, 3, 4; Treasurer 4; Pep Club 2, 3, 4; Senior Play 4; National Honor 3, 4; Religion Contest 3; Speech Contest 3; Homeroom Leader 3; Childrens Theater 3, 4; Lay Apostole 1, 2, 3, 4; Lillistrator & Lillislog 4.



HUGH McNAMARA  
"L" Club 4; Football 1, 2, 3, 4; Homeroom Leader 4; Lillistrator 3; Lillislog 3;



FRANK LUCIDO  
Sodality 3, 4; National Honor 3, 4; Glee Club 1, 2; Lay Apostole 1, 2, 3, 4; Operetta 3, 4; Band 1, 2, 3, 4.



MARY ANN MIER  
Sodality 2, 3, 4; Pep Club 2, 3, 4; Glee Club 1, 2, 3, 4; Operetta 3, 4; Lay Apostole 1, 2, 3, 4.



MARY JO LYNDON  
Sodality 1, 2, 3, 4; Pep Club 2, 3, 4; Glee Club 1, 2; Operetta 3, 4; Substitute Cheerleader 3, 4.



PAULA MESSINA  
Sodality 2, 3, 4; Pep Club 2, 3, 4; Glee Club 1, 2, 3; Operetta 3, 4.



ROSE ANN McGUIRE  
Sodality 1, 2, 3, 4; Pep Club 2, 3, 4; Vice-President 4; Glee Club 1, 2; Prom Attendant 3; Popularity Contest 4.



GENE MICELI  
Sodality 2, 3, 4; "L" Club 4; Football 2; Basketball 1, 2; Glee Club 1, 2, 3; Operetta 3; Baseball 4; Golf 3, 4.





BARBARA MINGUCCI  
Glee Club 1, 2; St. Patrick  
Play 1.



MARJORIE MANSOUR  
Sodality 2, 3, 4; Glee Club  
1, 2.



PHILLIP MORRISEY  
"L" Club 3 (Pres.) 4; Foot-  
ball 1, 2, 3, 4; Basketball 1,  
2, 3, 4; Glee Club 1, 2; Home-  
room Leader 2; Student Coun-  
cil 2, 4; Track 2, 4; Baseball  
3, 4.



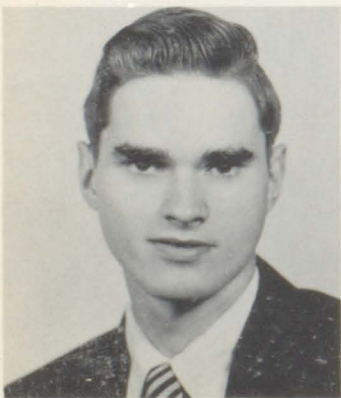
BARBARA MURPHY  
Sodality 4.



DANIAL MORGAN  
Sodality 2, 3, 4; Senior Play  
4; Glee Club 1, 2, 3; Oper-  
etta 3; Homeroom Leader  
4; Student Council President  
4; Childrens Theater 3.



FRANCES MYERS  
Debate 1, 2; Sodality 2, 3,  
4; Pep Club 2, 3, 4; Senior  
Play 4; Glee Club 1, 2, 3,  
4; National Honor 3, 4;  
Operetta 3, 4; Religion  
Contest 2; Speech Con-  
test 4; Homeroom (co)  
Leader 2; Lillislog 4; Lillis-  
trator 4.



DONALD NEWHOUSE  
Sodality 3, 4; Glee Club  
1, 2, 3; Operetta 3.

MARY K. NICHOLSON  
Sodality 2, 3, 4; Pep Club  
3; Glee Club 1, 2; Band 4.



Page Sponsors  
MOUNT ST. SCHOLASTICA COLLEGE  
ST. BENEDICT'S COLLEGE  
Atchison, Kansas





JO ANN O'BRIEN  
Pep Club 3; Glee Club  
4; Operetta 4.



JAMES PAYNE  
Glee Club 1, 2, 3, 4; St.  
Patricks Play 1; Operetta  
3.

BARBARA O'DONNELL  
Sodality 1, 2, 3, 4; Pep  
Club 2, 3, 4; Glee Club  
1, 2, 3, 4; Operetta 3, 4;  
Speech Contest 2, 3;  
Homeroom Leader 1, 3,  
(co) 2; Student Council  
1, 2, 3; Lillistrator 3, 4;  
Lillislog 3, 4; Assistant  
Editor 4; Quill & Scroll  
3, 4; Band 4; Childrens  
Theater 3, 4.



ANITA PARR  
Sodality 2, 3; Glee Club  
1, 2; Operetta 3, 4; Child-  
rens Theater 3.

DAVID O'MALLEY  
Sodality 2, 3, 4; National  
Honor 3, 4; Glee Club 1,  
2, 3, 4; Operetta 3, 4; Reli-  
gion Contest 3; Student  
Council 4; Lillislog Editor  
4; Lillistrator 4; Childrens  
Theater 3; Popularity  
Candidate 4; Quill &  
Scroll 4; Speech Contest  
2.



JOANNE PARROTT  
Sodality 2, 3, 4; Pep Club  
2, 3, 4; Glee Club 1, 2, 3,  
4; Operetta 3, 4; Lillis-  
trator 4; Lillislog 4.



WARREN PAGE  
St. Patrick Play 1; Glee  
Club 1, 2.

MARY ANN PETERSON  
Sodality 2, 3, 4; Pep Club  
2, 3, 4; Glee Club 1, 2, 3,  
4; St. Patrick Play 1;  
Operetta 3, 4.





BOB PLASSMEYER

JEANETTE PRATHER  
Sodality 3, 4.



BEVERLY PUTTHOFF  
Sodality 2, 3, 4; Pep Club  
2, 3, 4; Cheerleader 1, 3,  
Varsity 4. Senior Play 4;  
Glee Club 1, 2; Operetta  
3, 4; Speech Contest 2, 3,  
4; Majorette 1, 2; Quill &  
Scroll 4; Debate 1; Prom  
Committee Chairman  
(Orchestra) 3; Childrens  
Theater 4; Lillislog 3, 4;  
Lillistrator 3, 4; Camera  
Club 2, 3, 4, (pres. 4).



JERRY RECOB  
Senior Play; Speech Con-  
test; Operetta.



RICHARD RENNER  
Sodality 2, 3, 4; "L" Club  
3, 4; Football 3, 4; Glee  
Club 1, 2, 3, 4; Operetta  
3, 4; Homeroom Leader  
2, 3, 4; Popularity King  
4; Track 2, 3, 4; Baseball  
3, 4.

ROSEMARY RATCHFORD  
Sodality 1, 2, 3, 4; Pep Club  
2, 3, 4; Lillislog 4; Lillis-  
trator 4; Glee Club 1, 2.



JOHN ROEKER  
Glee Club 1, 2; Operetta  
3, 4.

"JACKIE" RANALLO  
Pep Club 2, 3, 4; Glee Club  
1, 2; St. Patrick Play 1.





MARY MARGARET RYAN  
Sodality 2, 3, 4; Pep Club  
2, 3, 4; Senior Play 4;  
Glee Club 1, 2, 3, 4; Oper-  
etta 3, 4.

BILL SANDERS  
Senior Play 4; Glee Club  
4; Speech Contest 4;

MARY FRANCES SHAFFER  
Sodality 1, 2, 3, 4; Pep  
Club 2, 3, 4; National  
Honor Society 3, 4; Sen-  
ior Play 4; Glee Club 1,  
2; Operetta 3, 4; Religion  
Contest 3; Homeroom  
Leader 2 (co) 1, 4; Student  
Council 2; Popularity Cand-  
idate 1; Prom Attendant 3;  
Quill and Scroll 4.



SYLVIA SHOEMAKER  
Glee Club 1, 2; Book  
Review 1; Debate 1, 2.

ANNA MARIE SHONBORN  
Sodality 1, 2, 3, 4; Pep  
Club 2, 3, 4; Senior Play  
4; National Honor Soc-  
iety 3, 4; Glee Club 1,  
2, 3, 4; Prom Committee  
Chairman (refreshment)  
3; Homeroom Leader 4;  
Student Council 4; Lillis-  
log 4; Lillistrator 4; Popu-  
larity Candidate 3, 4;  
Quill and Scroll 4.



KATHERINE SKINNER  
Glee Club 1, 2; Speech  
Contest 2.

MARY LOU SMITH  
Sodality 1, 2, 3, 4; Pep Club  
2, 3, 4; Glee Club 1, 2, 3, 4;  
Operetta 3, 4.

SHIRLEY SPINDELL  
Sodality 3, 4; Pep Club 2,  
3, 4; Glee Club 1, 2, 3, 4;  
Childrens Theater 3.





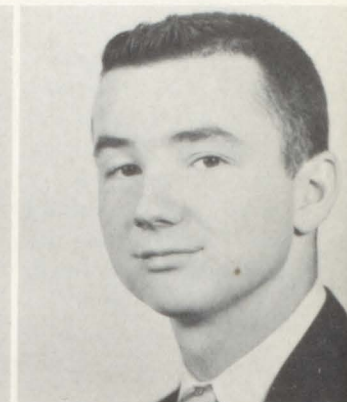


MARY ANN STABB  
Sodality 2, 3, 4; Pep Club 2, 3, 4;  
Glee Club 1, 2, 3, 4; Operetta 3, 4.

PAULA STAHL  
Sodality 1, 2, 3; Prefect 4; Pep  
Club 2, 3, 4; Senior Play 4; National  
Honor 3, 4; Glee Club 1, 2, 3, 4; Op-  
eretta 3, 4; Speech Contest 2, 3, 4;  
Student Council 4; Lillislog 4;  
Lillistrator Co-editor 4; Childrens  
Theater 3; Quill & Scroll 4; Secre-  
tary of Student Council 4; Voice  
of Democracy 3.

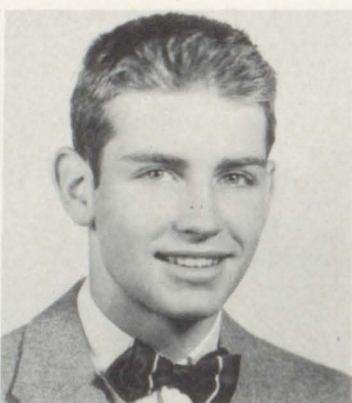
LAURA STOERMAN  
Sodality 2, 3, 4; Pep Club 2, 3, 4;  
Glee Club 1, 2; Operetta 3, 4;  
Homeroom (co)Leader 1; Home-  
coming Queen 4.

JEROME STOETZER  
Sodality 2, 3, 4; "L" Club 4; Foot-  
ball 4; Glee Club 2, 3, 4; Operetta  
3, 4.



MARTHA SYVERSON  
Sodality 3, 4; Pep Club 2, 3, 4;  
Glee Club 2, 3, 4; Operetta 3, 4.

JOSEPH TSCHIRHART  
Sodality 3, 4; Glee Club 1, 2, 3;  
Operetta 3.



SUZANNE TEEVAN  
Sodality 1, 2, 3, 4; Pep Club 2, 3, 4;  
Glee Club 1, 2, 3, 4; Operetta 3.

LOUISE THOMPSON  
Sodality 1, 2, 3, 4; Pep Club 2, 3, 4;  
Glee Club 1, 2; Cheerleader 3;  
Homecoming Attendant 4.

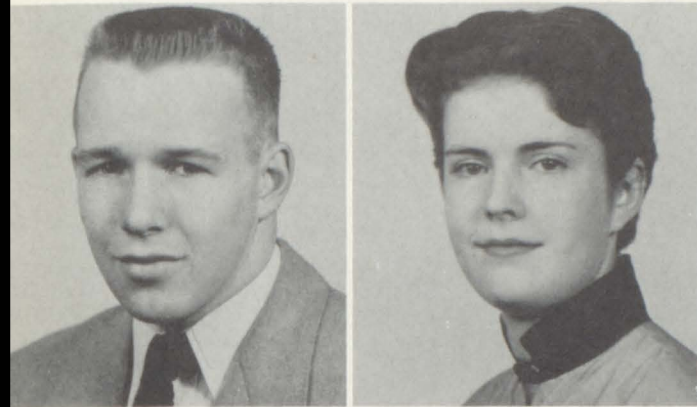
JOHN ZAPIEN  
Speech 3 first place; Football; "L"  
Club; Track.





KENNETH THORPE  
Sodality 3, 4; Senior Play 4; National Honor 3, 4; Glee Club 1, 2, 3, 4; Operetta 3, 4; Religion Contest 2.

HOWARD WELHOELTER  
Sodality 3, 4; Football 1; Basketball 2, 3; Glee Club 1, 2, 3, 4; Operetta 3, 4; Speech Contest 3, 4; Childrens Theater 3.



FRED WILLIAMS  
"L" Club 3, 4; Football 1, 2, 3, 4; Basketball 1, 2, 3; Glee Club 1, 2; Track 1, 2, 3, 4; Baseball 1, 2, 3, 4.

ELIZABETH WILLIS  
Sodality 1, 2, 3, 4; Glee Club 1, 2.

BETTY WILSON  
Sodality 3, 4; Pep Club 4; Glee Club 1, 3, 4; Operetta 3, 4.

SONDRA WILSON  
Sodality 3, 4; Pep Club 2, 3, 4; Glee Club 1, 2, 3, 4; Operetta 3, 4.



KATHLEEN WONDERLY  
Sodality 2, 3, 4; Pep Club 2, 3, 4; Glee Club 1, 2; Cheerleader 1, 2, 3, varsity 4; Homecoming attendant 4.

NATALIE ZIBUNG  
Sodality 3, 4; Pep Club 3, 4; Senior Play 4; Glee Club 4; Speech Contest 3, 4; Lillislog 4; Lillistrator 4; Operetta 4.

JAMES KALMUS  
"L" Club 4; Football 2, 3, 4; Glee Club 2, 3; St. Patricks Play 1; Operetta 3.

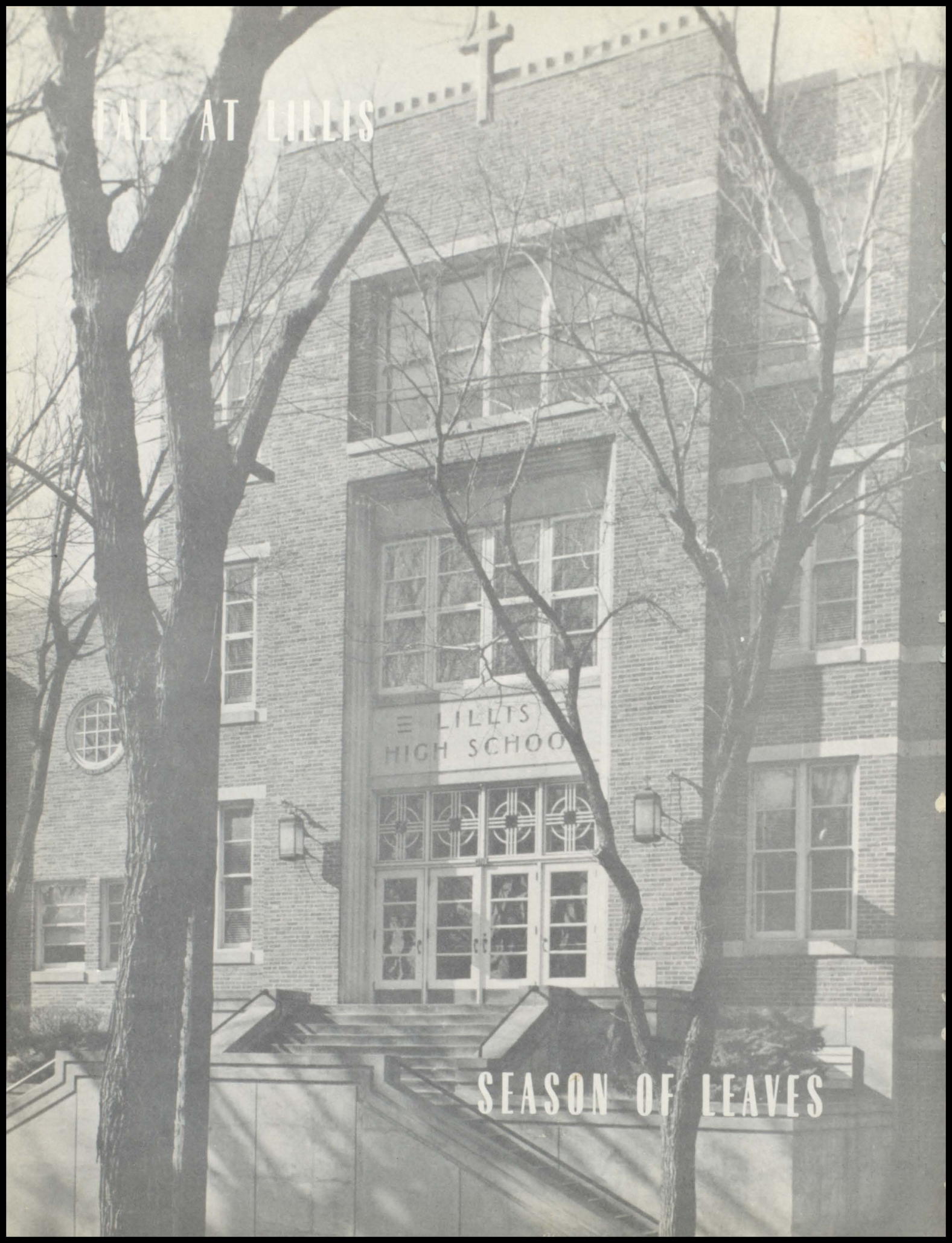




FALL AT LILLIS

E LILLIS  
HIGH SCHOOL

SEASON OF LEAVES





SEPTEMBER

OCTOBER

NOVEMBER



SPIRITUAL

SCHOLASTIC

SOCIAL



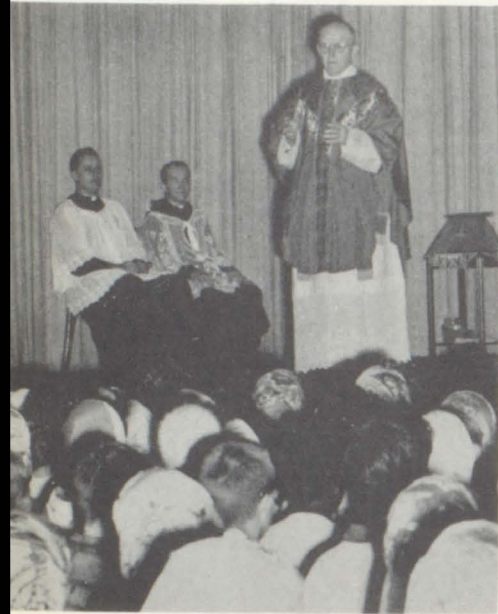
# OPENING MASS

## FIRST

# OF MONTHLY SERIES



The Most Rev. Edwin V. O'Hara, bishop of the Kansas City diocese begins Mass assisted by the Rev. M. F. McAuliffe, and the Rev. Regis Hickey, O. S. B.



At the right Bishop O'Hara reaches the Ablution. Jerry Stoetzer and David O'Malley, seniors serve the Mass.



ABOVE: Bishop O'Hara preaches as Father McAuliffe and Father Regis look on;



LEFT: The Bishop blesses the Students as he leaves the altar. Also Pictured are Father McAuliffe, Father Regis, David O'Malley, left foreground, the Rev. Joseph Sullivan, center, and Jerry Stoetzer, right.



# L I V I N G R O S A R Y



In the top picture are: Father Regis, Dan Morgan, Mike Burasco, Mike Dillon, Joe Kelley, Joe Tchirhart, Gary Trueblood, Bob Johnson, Tom Lyndon, Phil Denning, Bill Curran, Dick Renner, Joe Glynn, Mary Shaffer, Shirley Gallagher, and Judy Gill.

In the picture on the left is Pat Kneaves, and Sharon Nichols.

In the picture on the right, are Natile Zibung and Mary Lou Smith.



Kenneth Thorpe, Mary Ann Peterson, Mary E. Dobson, Donald Eber.

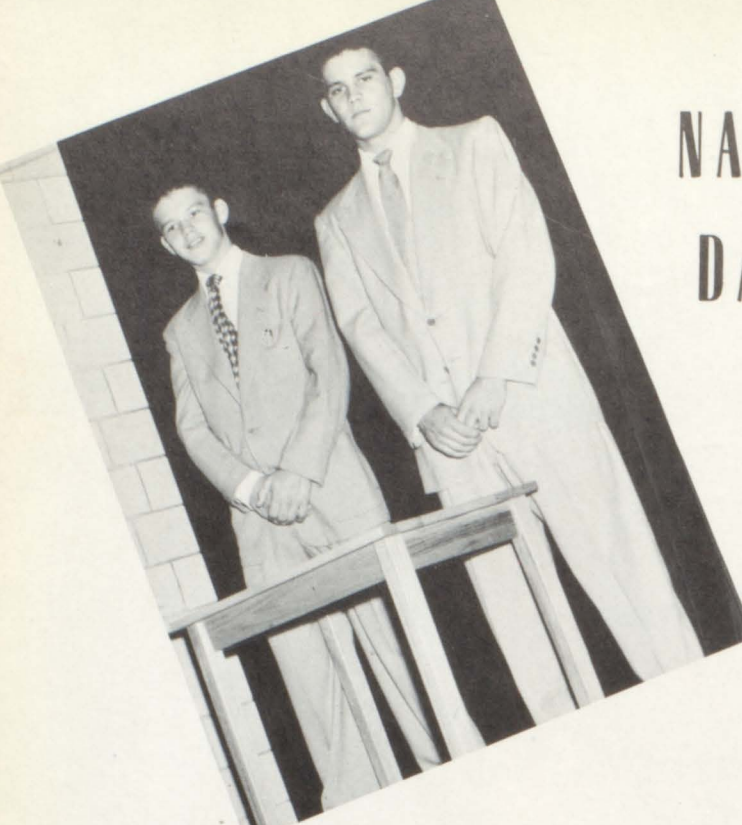
Susannel Teevan, Donald Newhouse, Janice Akin, Peggy Lightner, and Mary Ann Staab.

Howard Welthoelter, Gene Micell, Dick Smith.





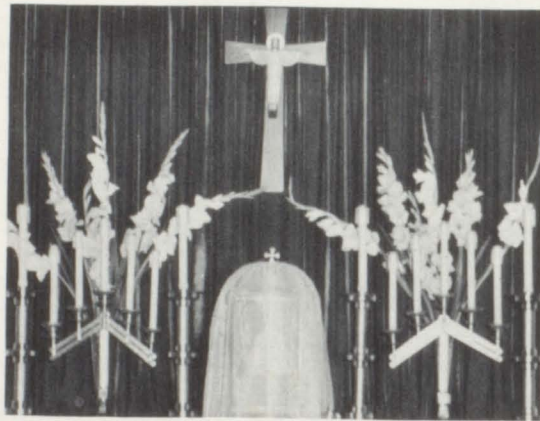
# NAME DAY



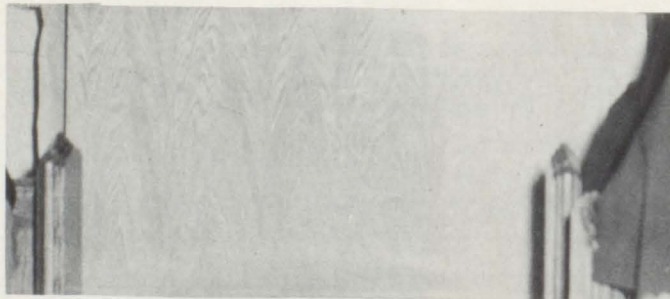
Above Dan Morgan, president of the student council, and Richard Renner, homeroom leader of 200, are getting ready to present a typing table from the student body to Sister Therese Marie for her name day gift.



Hugh McNamara, homeroom leader of 203, and Anne Marie Shonborn, homeroom leader of 201, present a bouquet of red roses to Sister.



Jody Balestrere, one of Sister's escorts to the gym.



A view of the altar in the Sisters' chapel, with some of the flowers given by the students.



M. F. Shaffer, one of Sister's escorts to the gym.



Feast of the Little  
Flower  
October 3



# *Our Student Council*



Joe Glynn, Vice President; Paula Stahl, Secretary; Hugh McNamara, Treasurer; Dan Morgan, President.

# *Wielding The Gavel Of Democracy*



M. Eth, B. Adams, D. O'Malley, A. Bonello, A. Shonborn. STANDING: E. Kelly, R. Renner, M. Dunn, P. Morrissey, E. Paura, R. Morrissey, S. Adams, V. Heegn, M. Dillon. NOT PICTURED: F. Morales, K. Daub, L. Nicholson.



# LILLIS



OFFICERS: Mrs. C. E. Morrisey, Mrs. L. Loschke, Mrs. L. Messina, Mrs. M. Sansone, Mrs. E. L. Kelly. ABSENT: Mrs. L. P. Howard.



Mrs. Becker enjoys tea.

# MOTHERS' CLUB



Mr. and Mrs. G. Shaffer, and Mary Frances Shaffer, Senior, register for Parents' tea.



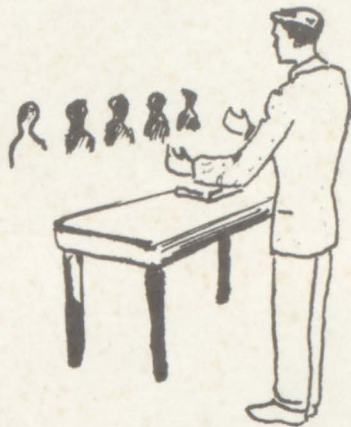
Mr. W. T. O'Malley, Mrs. E. O'Donnell and Mrs. T. Roark, stop to chat with Sister Therese Marie.



# Our Dads

Page Sponsor:  
COUNTRY CLUB DAIRY

## THEY LEAD



L. TO R. : Pres. , Charles Penna; Moderator, Father Regis; Sec. , John Waller (absent); Ben Bonello, V. President.

## THEY PLAN



L. TO R. , 1ST ROW: Mr. Bernardi, Mr. McGonicle. 2ND: Mr. Crusoe, Mr. Stitz, Mr. Parrott, Mr. Bowman. 3RD: Mr. Herner, Mr. Smith, Mr. Cusing, Mr. Breitenstein, Mr. J. Gaschen. 4TH: Mr. Darnay, Mr. E. Bellman, Mr. Bowman.

AT THE RIGHT: Trying on the new equipment, purchased by the Dads, with satisfied expressions are Douglas Hicks and Kenny Andrews.

## THEY SUCCEED







Spending all that hard earned money paying for fees and books are Toni Bonello, JoAnn Jakobe, Rose Ann McGuire, Louise Thompson, Joe Kelly, Coach Mintner, Charles Bellmen, and Gene Miceli.



A group of Lillisites getting acquainted again.

# GETTING IN THE



We expect trouble with lockers for the Frosh, but look at these Sophs, James Farris, Thomas Bissing, Ellis Herbst, Richard Pallanich, and John Howard.

# GROOVE AGAIN



A group of the freshmen exploring the halls. 32



And finally classes. Here Father Regis questions Sylvia Shoemaker.



# FRESHMAN SOPHOMORE

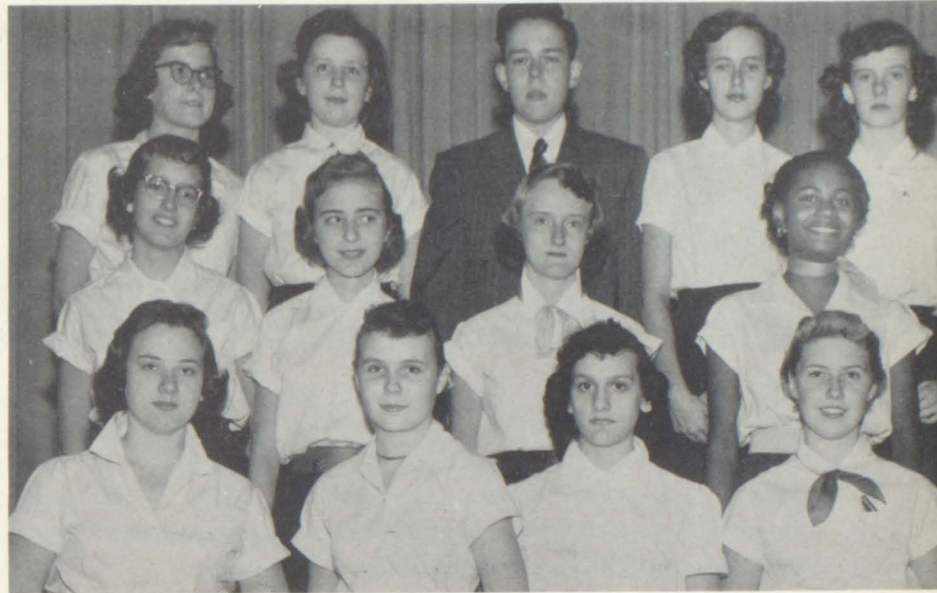
"Fourscore and -----"

Freshmen who took part in the underclassmen speech contest in November were, TOP ROW: M. Lonegan, S. Fundis, R. Hawver, D. Beerbower, M. Cushing. SECOND ROW: K. Shea, J. Beebe, C. Luckner, K. Ryan, L. Abbott. THIRD ROW: B. Adams, M. Mishmash, P. Donnelly, B. Hudson, V. Houtz.

# SPEECH FINALISTS

"Seven years ago -----"

Sophomore contenders were, TOP ROW: T. Freeman, H. Thorpe, B. Steele, L. Heegn, L. French. SECOND ROW: P. Hellinger, J. Gregg, C. Staab, J. Powell. THIRD ROW: M. Sherwood, A. Herrbach, G. Armilio, J. Mirosław. NOT PRESENT when the picture was taken were Kenny Andrews and Jim Gregory.



# AMERICAN LEGION

"Our fathers brought fourth -----"

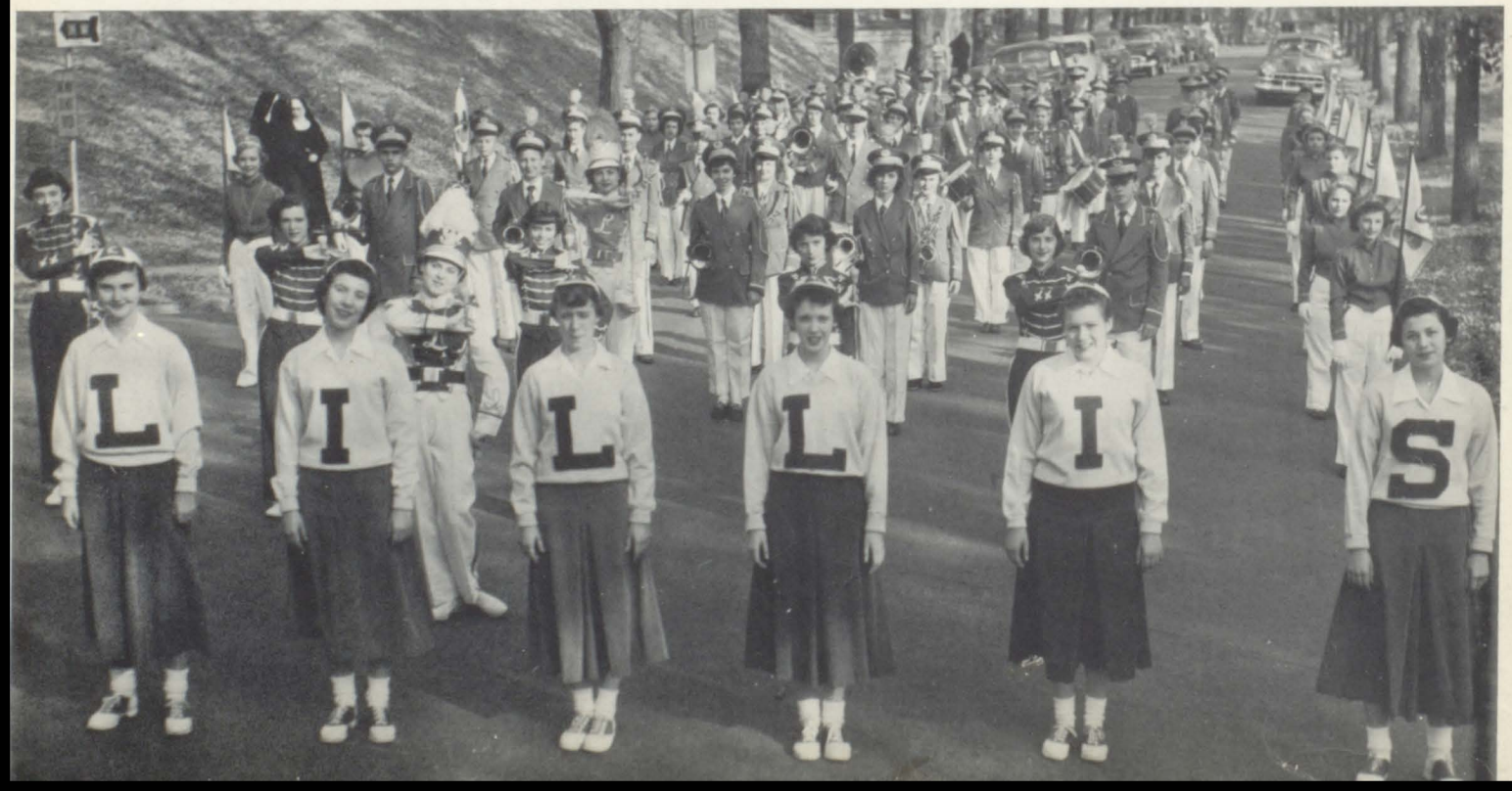
Would-be orators who tried out for the American Legion contest were, SEATED: John Waller, M. K. Upton, B. Badgett, L. Coleman, J. Copenhaver. STANDING: C. Buckles, W. Becker, M. Wilson, H. Werkowitch, J. Speigh, and P. Billings.







"There was a little girl, who had a little curl;" should be changed to "There was a little girl who knew how to twirl" when speaking of Rosemary Kammerer, drum major, who leads the Lillis High School Band. Pictured with her above are Margaret Lohe, Judy Straley, Loretta Schuch, Marilyn Howard, and Charlene Jones. Below the entire ensemble pauses for the photographer before swinging into position as the lead band in the American Royal Parade.







Caught in one of their rare static moments is the Lillis High School Marching Band pictured above, while below members of the Flag Corps wait for the Sergeant to "sound off". Flag bearers around the "V" are Carol Stevenson, Marguerite Haidusek, Juliana Wahl, Betty Coleman, Rosemary Hawver, Rita Staab, Mary Jo Monahan, Julia Brown, Judy Gregg, Darlene Gable, Connie Herter, Betty Kremreiter, Susie Frazee, Diane Blackshear, Maxine Herner, and Peggy Gallagher.









# ROYALTY IN



June Pfeiffer, posing for a picture before the Homecoming Parade.



Attendants in the Homecoming were Louise Thompson and Kathleen Wonderly.

## HOMECOMING

The Homecoming festivities got off to a rousing start when Warren Becker, senior and a letterman from last year, walked out on the stage and asked what the good word was -- "Beat Redemptionist" was the answer that almost brought the roof down on us all. Warren introduced Coach Mintner, Coach Schemideler, and Father Regis who each gave a pep talk as they have always done at other pep rallies. To add a touch of humor to this pep rally Doug Hicks, Ed Pulido and Gary Trueblood, all three juniors, gave out with the cheer "Locomotive", and when they were finished, the students wanted "more, more" but seems as though that was the only cheer the boys happened to know. ---The Green Peppers headed by June Pfeiffer put on a wonderful exhibition--Varsity Cheerleaders led a cheering contest between the "L" Club, Pep Club, and the rest of the school. There was no

final judging on this, but each group seemed to think they were the best. After much stalling Coach Mintner announced that Louise Thompson was second attendant; Kathleen Wonderly first attendant; and Homecoming Queen by an unanimous vote was Laura Stoerman. After the royal party had gotten into their party dresses, the entire student body put on a demonstration, down Troost to thirty-fifth, up to Forest and back to the school grounds from which they were dismissed.

The day brought the thrill of the decorated cars, and the parade all the way to C.Y.C. Stadium. The game which ended in a 12-12 tie was surely a heartbreaker, with "The Fighting Irish" really fighting all the way to the very last moments of the game. Dick Renner, Tom Sublette, and John Dorrian presented flowers at the half time to the Queen and her attendants.

To climax the activities, a semi-formal dance was held after the game with music by Al Ruff's Band. Phil Morrissey "L" Club president, officially crowned Laura "Homecoming Queen of 54". Toni Bonelle, Green Pepper president, presented an orchid to her in behalf of the whole pep club.

The homecoming activities will be remembered by all, but to us, seniors, it is just another page closing in that large memory book of four wonderful years at LILLIS.



# "Dig" the Brains Brawn Beauty



FRONT ROW: Burasco, Miles, C. Bellman, Morales, Smith, Fitzgerald, Salazar, Whorton, Darling, Pulido.  
 SECOND ROW: Father Regis, Nenninger, McLaury, Trueblood, Williams, Renner, captain, Daly, Powers,  
 Denning, Hicks, H. McNamara, B. Morrisey. THIRD ROW: Coach Schmiedeler, Porter, Dorrian, P. Morrisey,  
 Lyndon, R. Eber, D. Eber, Glynn, Kalmus, Arth, Becker, Kramer, Sublette, Coach Mintner.

## FOR THE RECORD!

	Lillis	Opponent
Liberty	18	13
Grandview	6	41
De La Salle*	14	0
Glennon*	0	26
Hogan*	7	35
Rockhurst*	20	20
Redemptorist*	12	12
Maur Hill	32	13

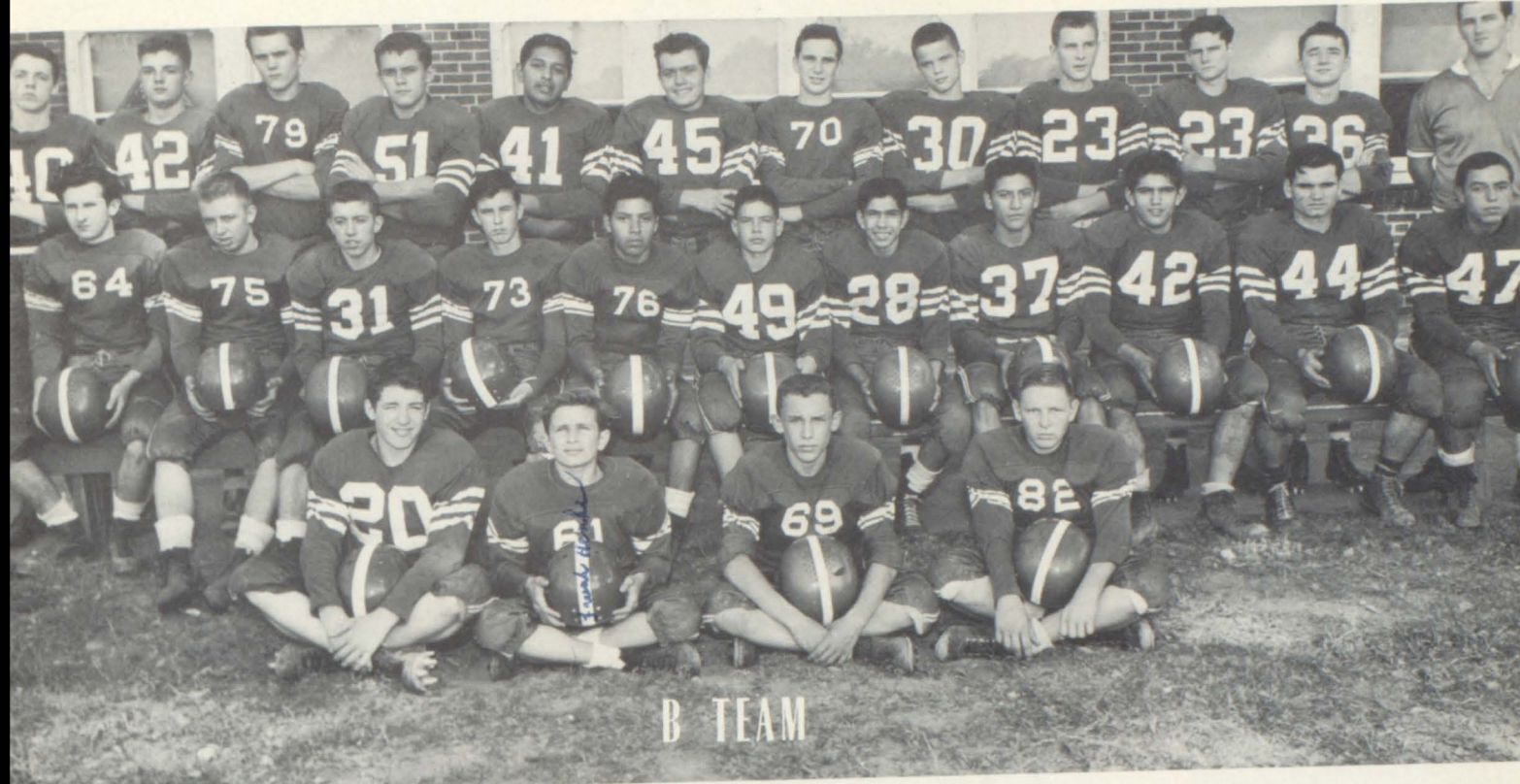
\*League Game

The Fighting Irish finished their season with the grand total of three victories, two ties, and three losses, and received the third place trophy in the Catholic League.

Elected to the All-Star Team of the Catholic League in Kansas City were Dick Renner, captain, Freddie Williams, senior; and Tom Sublette, junior.



# SMALL FRY VARSITY



BACK ROW: Daly, Coughlin, Drimmel, Porter, Zapien, Andrews, Lyndon, Powers, Denning, McAulitte, Stoetzer, Coach Schmiedeler; SECOND ROW: Miles, Bellman, Bellman, Clark, Rodriguez, Fitzgerald, Salazar, Morales, Darling, Whorton, Pulido; FRONT ROW: A. Smith, Henke, Chartier, Pallanich.



BACK ROW: Coach Schmiedeler, Salazar, Smith, Donnelly, Reynolds, Lonegan, Morales, Cushing, Zapien, Line Coach; FRONT ROW: Jarrett, Sweeney, Breitenstein, Gonzales, Lockwood, Langley, Hanlon.





BOB MORRISEY



FRANK NENNINGER



GARY TRUEBLOOD

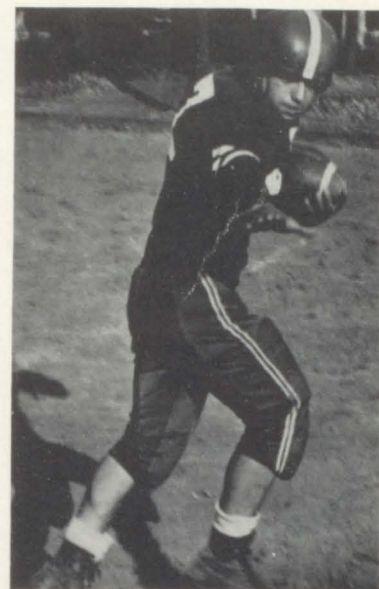


HUGH McNARMA

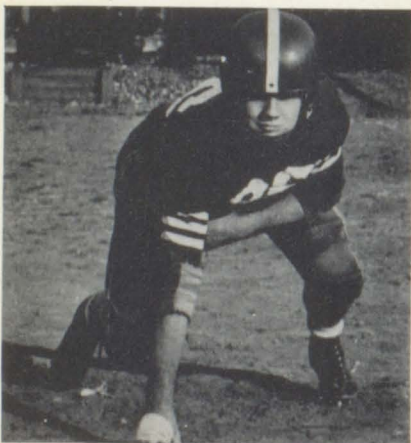


MIKE BURASCO

P I G S K I N



ED PULIDO



JERRY STOETZER

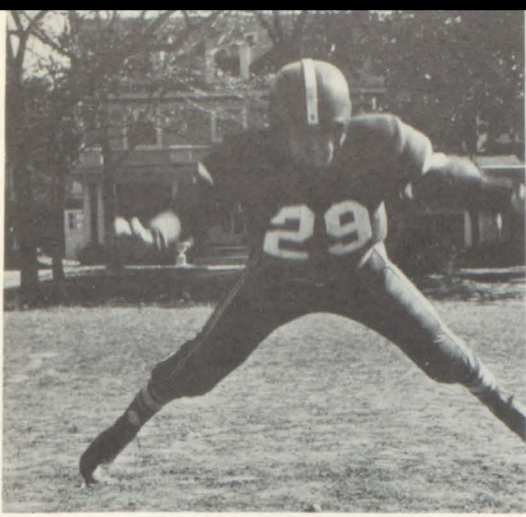


RONALD EBER



JIM KRAMER

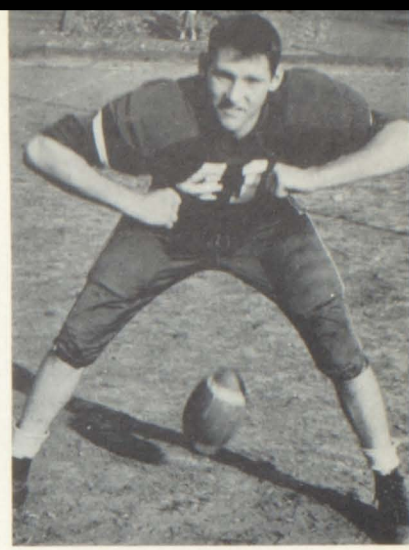




FRED WILLIAMS



PHIL MORRISEY



TOM SUBLETTE



RICHARD RENNER

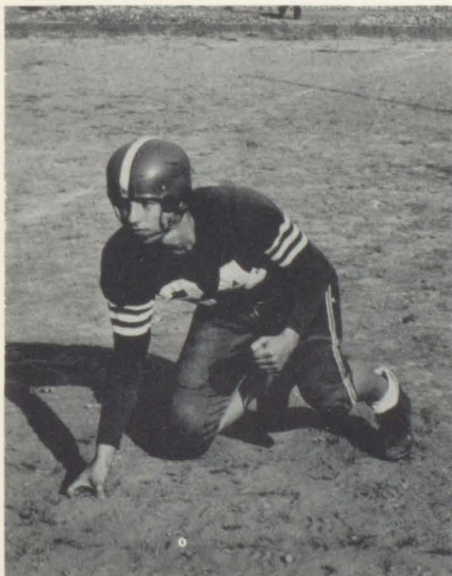
P  
A  
C  
K  
E  
R  
S



JOHN DORRIAN



JOE GLYNN



WARREN BECKER



DOUGLAS HICKS



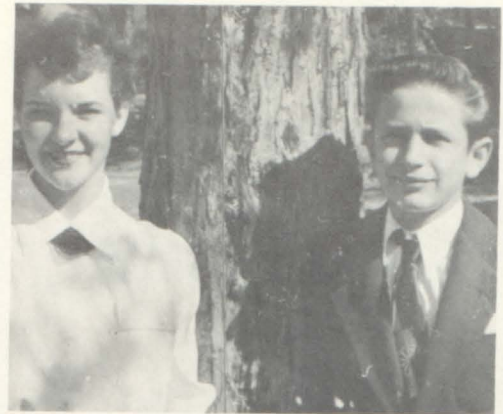
JIM KALMUS



# POPULARITY



Mary Ann Dunn, Mike Lonegan Room 405



Judy Brown, Frank Henke  
Room 306



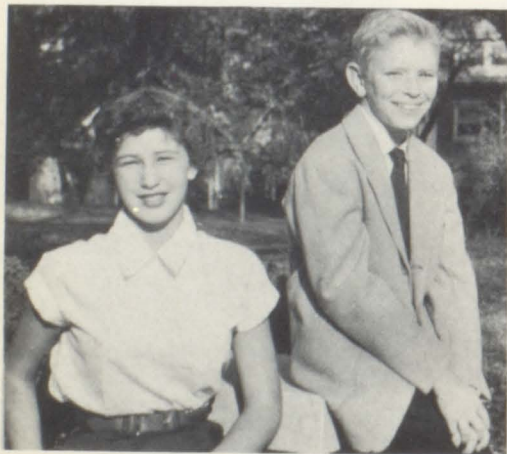
Dick Renner, Sally Allegri  
Room 200



Jim McAuliffe, Diane Johnson  
Room 204



Mike Burasco, Rose McGuire  
Room 202



Judy Malkmus, Pat Donnelly  
Room 406



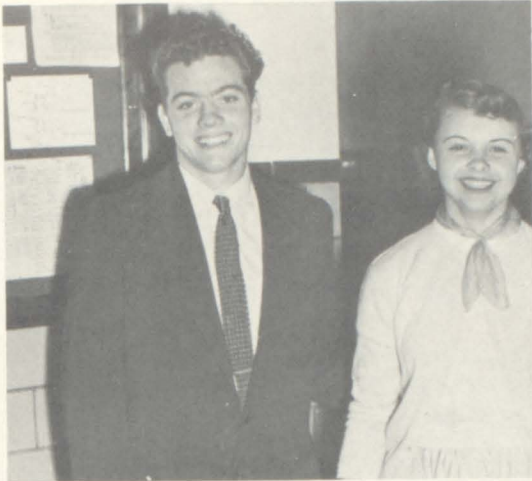
Carol Johnson, Doug Hicks  
Room 302



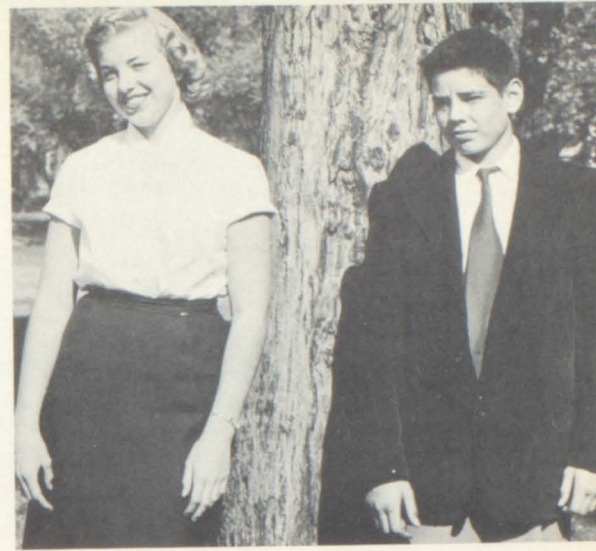
Georgia LaSalle, Bill Sprenger  
Room 403



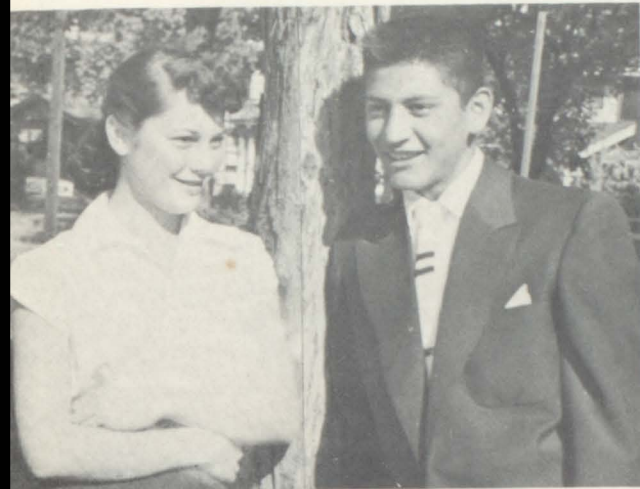
# CONTESTANTS



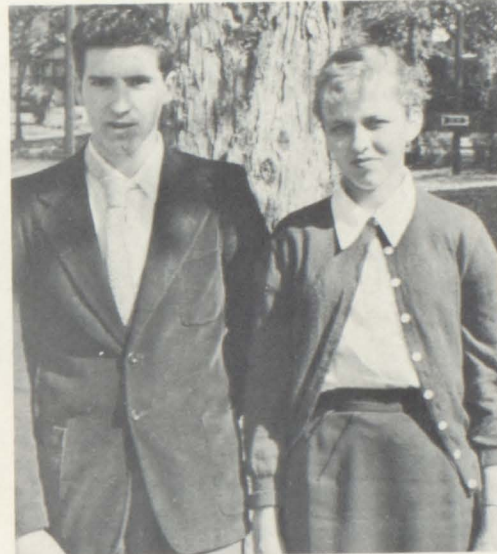
Kenneth Andrews, Betty Kreamsreiter  
Room 401



Liane Hendrix, Jim Fitzgerald Room 304



Sylvia Brown, Frank Morales Room 404



Kenneth Daub, Juliana Wahl  
Room 402



David O'Malley,  
Anna Marie Shonborn  
Room 201



Marilyn Eth, Joe Glynn Room 203



Ruth Wynne, Tom Sublette  
Room 205



Gerry Daly, Nancy Young  
Room 303





# CARNIVAL

Boys and Dolls!  
They only mix on carnival nights  
as Mike Lonegan and Charles  
Backman seem to smile.

ROYALTY-  
In the persons of Carol  
Johnson and Richard Renner  
were crowned by Dr. George  
Griffith.



Religious articles sold by Judy Sansone, Chardell  
Buckles, LaVonna Mc Brayer and being looked  
over by Mrs. Ernest Walton and Sharon Sue.

Ada Mae Georgie and Ellen  
Bensing selling articles.





# CANDID SHOTS

Judy Howard and Betty Tallman enjoying chili while Tom Lyndon clears away. Just a few of the many carnival attractions.



At the cake walk John Waller, Jo Ann Miller, Leta Coleman, Micky Miles and Pat Lambtry to select the winner.



"Real leather" is the slogan for Anna Marie Seitzer, Sharon King, Leona Heegn.



John Clark with "Madam Lilly."



# Senior Pride and



Papa (B. Sanders) tries to comfort  
Mama's (M. Loschke) troubled  
nerves.



Lizzy (S. Gallagher) greets the  
pompous Lady Catherine  
(Frances Myers).



Mr. Darcy (J. Recob) waits hope-  
fully for Lizzie's answer to his  
proud proposal.



Lydia (J. Balestre) and Katherine  
(R. Gyulay) are charmed by (Wicham),  
J. Brink.



Prop men at work are R. Eber, W.  
Becker, and D. Eber.



Hill (P. Stahl) comes to the aid of  
impetuous Collins (K. Thorpe).



Autographing programs before curtain call are M. F. Shaffer, M. Dobson, B. Sanders,  
A. M. Shonborn, J. Brink, J. Recob, P. Kneaves, R. Gyulay, P. Stahl, and M. Ryan



# Play Prejudice



Lizzie ponders how best to refuse Mr. Darcy



Hill receives guests. Mr. Darcy, Miss Bingley (B. Putthoff), and Mr. Bingley (D. Morgan).



Mr. Bingley (D. Morgan) finds the surroundings very pleasant when Jane (A. Shonborn) is there.



Mr. Collins (K. Thorpe) is well-loved by his bride (N. Zibung) and his mother-in-law (M. Ryan).

"Do you think this will help?" P. Kneaves and M. E. Dobson try to glamourize studious "Mary".



Three hopefuls still looking for a successful match are Kitty (R. Gyulay, Miss Bingley (B. Putthoff) and Mary (M. F. Shaffer).



The five Bennet daughters with their mother, clockwise, Kate (R. Gyulay) Jane (A. M. Shonborn) Mary (M. F. Shaffer) Elizabeth (S. Gallagher) Mrs. Bennet (M. K. Loschke) and Lydia (J. Balestrene).



A black and white photograph of a brick building with snow-covered trees and a snow-covered car in the foreground. The scene is a winter scene with snow on the ground, trees, and the car. The building has several windows and a decorative element on the right side. The text "WINTER AT LILLIS" is overlaid on the top left, and "SEASON OF SNOW" is overlaid on the bottom right.

WINTER AT LILLIS

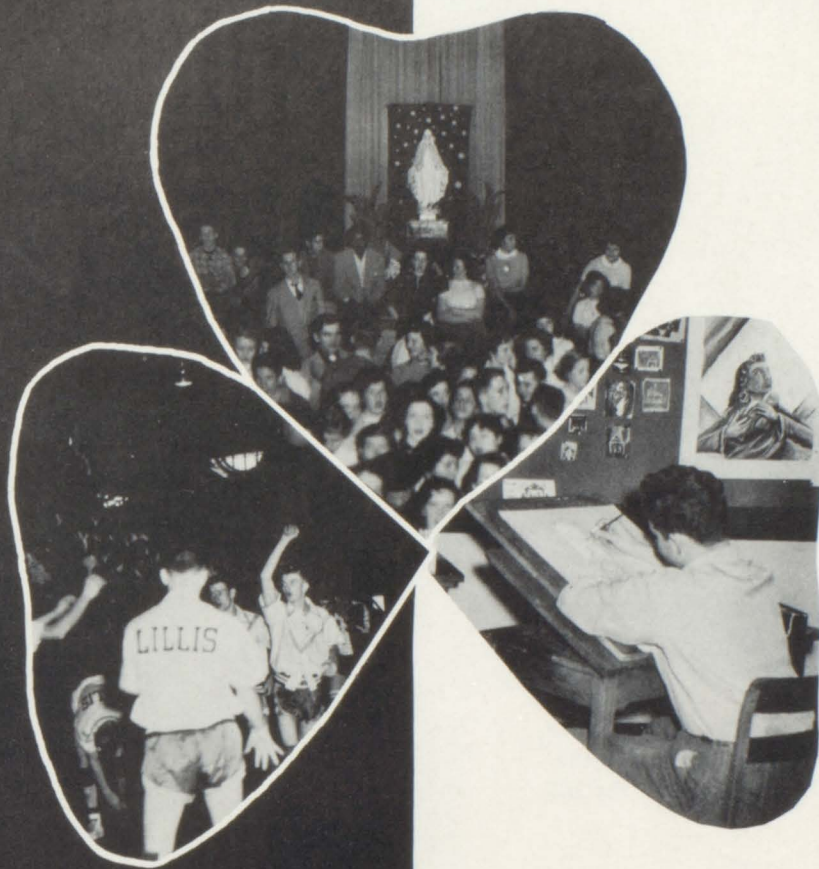
SEASON OF SNOW



DECEMBER

JANUARY

FEBRUARY



SPIRITUAL

SCHOLASTIC

SOCIAL



# THE WILL



Given by  
Rev. P. J. Toomey C.S.V.

# OF GOD



The seniors and juniors listen to Father Toomey at one of their conferences. Father Toomey, who is vocation recruiter for the Viatorians of Chicago, used "The Will of God" as his retreat theme.

Scholastic and social activities are set aside completely during the annual student retreat held during the first week of December; two days for the junior and seniors and two, for the freshmen and underclassmen. Father Toomey, this year's retreat master, distributes Holy Communion to the upperclassmen on the opening day of their exercises.



Hearing about some of Father Toomey's experiences, as a chaplain, in the Pacific theatre during World War II are: D. J. Powers, Junior; Judy Schrier, Sophomore; Sylvia Brown, Freshman; Jim Hanlon, Freshman, seated. Standing are: John Jumara, Susan Glynn, and Bob Smith, Sophomores.



Saying the rosary in the gym, converted into a chapel, during retreat are members of the junior class, pictured above. Nearest the camera are home-rooms 303 and 302.



# ADVENT SCENES ON FOREST AVENUE



Pat Delaney, Joanne Parrot, Mary Elizabeth Dobson, and Jimmy Horner, seniors, assort Christmas cards which were donated by Lillis students to be given to prisoners so that they might greet their loved ones.



Members of Homeroom 406 take their turn at lighting the blue vigil light in front of the Blessed Mother's Statue. This was a Marian Year project carried out by all homerooms who took their turn by weeks.



Marlene Sherwood and Barbara Behrens peer through a window downtown as they paint a crib scene on a downtown shop window to help in the "Put Christ Back in Christmas" campaign.



Marie Howerton, Shirley Hicks, and Elizabeth Beebe, juniors, bring a little Yuletide spirit to their homeroom.





TOP ROW: J. Stoetzer, D. Hoberecht, J. Glynn, J. Recob, D. Renner, W. Becker, M. Syverson, M. Staab, F. Myers, M. Dobson, P. Stahl, and J. O'Brien. SECOND ROW: J. Allan, J. Horner, H. Welholter, M. Kennedy, J. Brown, J. Powell, E. Jones, B. O'Donnell, S. Wilson, R. Cabrini, M. Bowman, M. Peterson, K. Thorpe, B. Sanders, M. Gibbs, J. Davis, D. O'Malley, J. Jones, M. Loschke, B. Wilson, J. Parrott, M. Creswell, M. Meier, M. Brown, and S. Gallagher. All are members of the senior special glee except Joy Powell, sophomore, who sang as a soloist. They wore their choral gowns for the first time at the Christmas program.



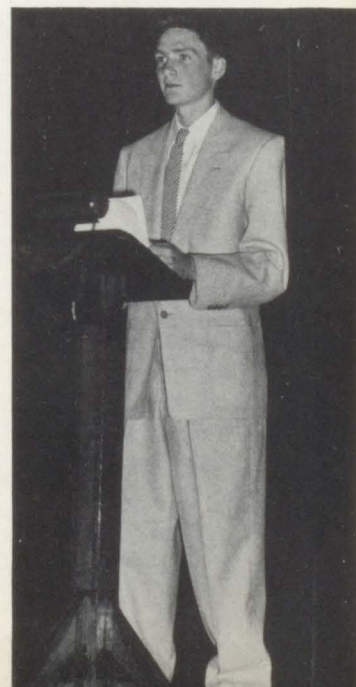
Lillisites who appeared in "Why the Chimes Rang," a Christmas playlet were Joe Tschirhart, Dan Morgan, Delores Brownfield, seniors; Nancy Ward, B. McMahon, Mary C. Upton, juniors; Richard Bell, senior; and Terry Toman, Vanalee Easter, John Waller, and Joe Chartier, juniors.

# CHRISTMAS

# T I M E

John McLaury, junior, who acted as narrator for the Christmas play.

# AT LILLIS

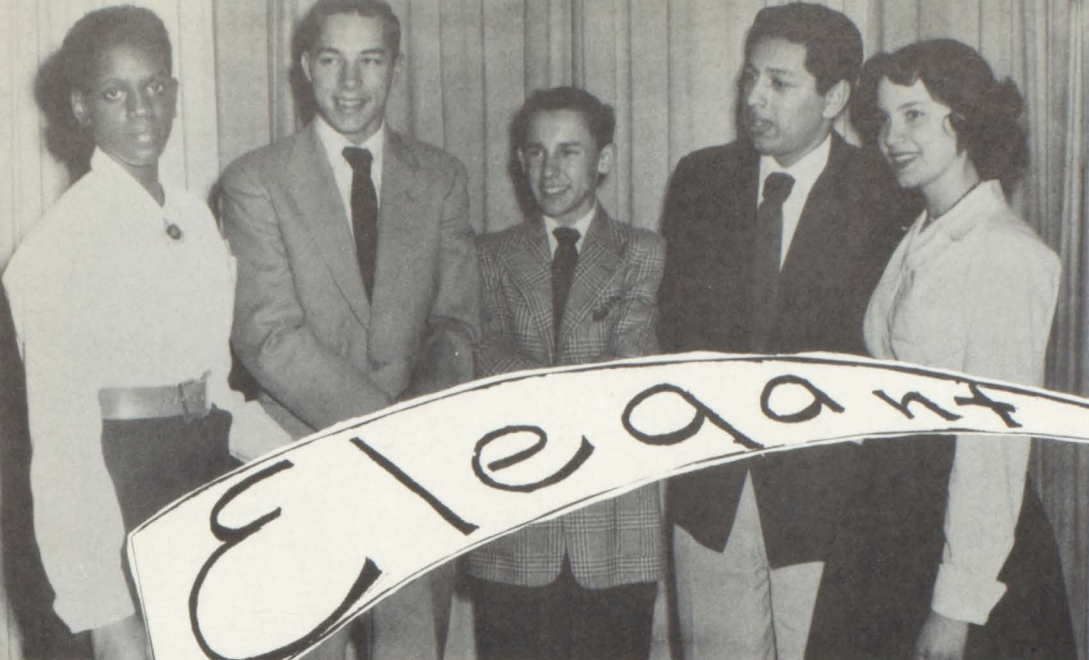


First to contribute to the Christmas basket for their needy family in room 203 were Larry Bowman, Betty Howard, and Sue Teevan. This was a Student Council project whereby all homerooms "adopted" families.





First place winners in the junior, senior division are L-R: Mary Alexander-extemp; Warren Becker-oratorical; Joseph Chartier-humorous; John Zapien-poetry; and Paula Stahl-serious.



1st and 2nd place takers, freshman, sophomore division. TOP, L-R: Lenore French, oratory; Leona Heegn, humorous; Susan Fundis, poetry; Robert Steele, oratory; Kenny Andrews, humorous; Pat Hellinger, extemp; Joy Powell, serious; Delma Beerbower, extemp; Carolyn Staab, Betty Adams, poetry; Pat Donnelly, oratory.



Second place holders are L-R: Beverly Putthoff-humorous; Mary McQueeny-oratorical; Howard WeiHoelter-humorous; Janice Akin-oratorical; Betty Tallman-serious; and Bill Badgett-poetry.



Elocutionists

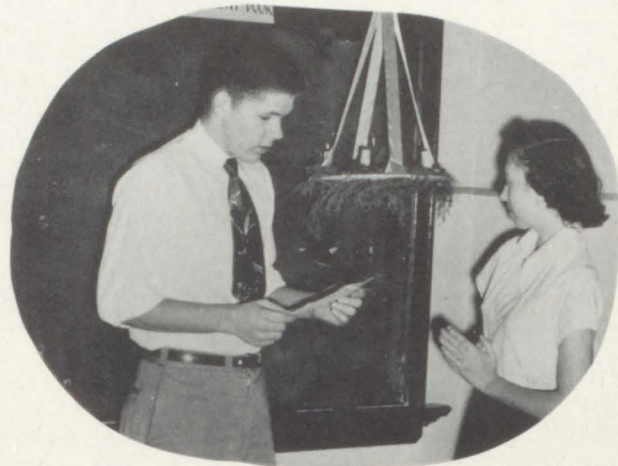


# Here And There

The big test! Thinking hard for test are Mary Ellen Ryan, Margaret Lohe, Suzanne Frazee, Lenore French, Judy Gregg, Mary Kay Guillaume, Frank Henke, Leona Heegn, John Howard, and Charlene Tschirhart.



Consulting Father Regis about their tests are Tom Lyndon and Judy Brown.



Saying the Advent Prayer before the tests are Ronald Eber and Natalie Zibung, seniors of rooms 200 and 201.



Testing their ability to serve a formal tea are, left to right, Virginia Arth, Darlene Gable, and Sharon King.





Saved by the bell!



"Beautiful beautiful 'L' Club" done on the L-Club hour during speech class by Mike Dillon, Mike McNamara, Doug Hicks, and D. J. Powers, juniors; while Phil Morrissey, L-Club president, looks on with a persuasive air. Needless to add--this was Pledge Week?



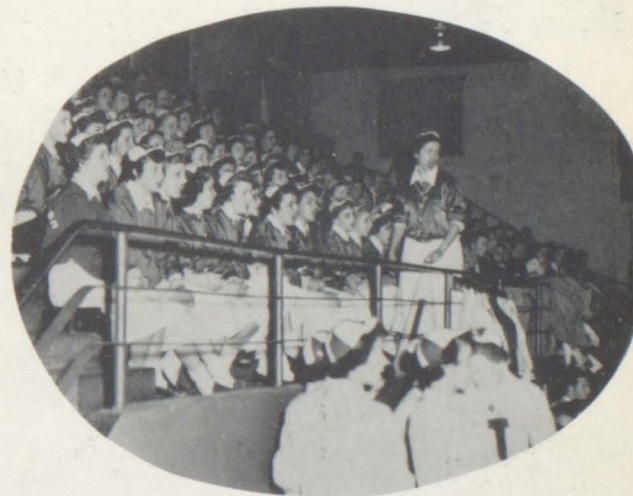
The between class break with B. Mingucci, J. O'Brien, Barbara Mingucci, JoAnn O'Brien, and Jimmie Harris, seniors, cooling their vocal cords after an hour's heavy recitation.

## AROUND

## LILLIS



Headin' for the la-a-a-a-st class are (next to the wall starting at the front, M. K. Mishmash, J. Lockwood, A. M. Tallman, L. Aschwanden, J. Howard, and M. Murphy.



The voice of Lillis being led by the Pep Club president, Toni Bonnello.



# "CHEERLEADERS"



YEA  
L  
L  
L  
L  
S

VAR-SITY



GO  
I  
R  
I  
S  
H  
GO



Sally  
Allegri

Shirley  
Gallagher



Anna Marie  
Callegari



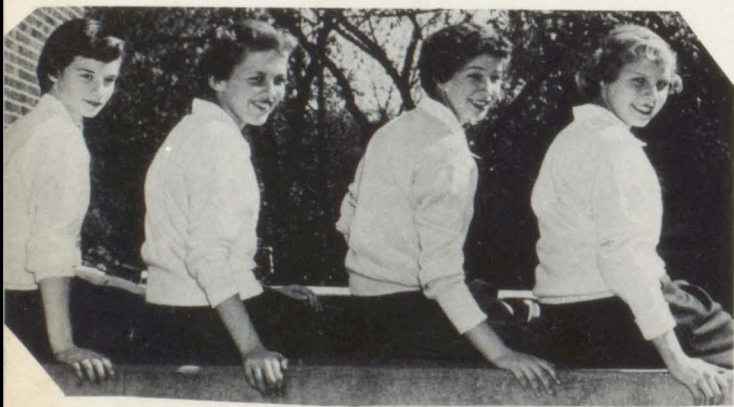
"B" Team Cheerleaders talking things over are Joann Stoetzer, Nancy Young, Ruth Wynne, and Carolyn Johnson.

Beverly  
Putthoff



Eleanor  
Paura

Kathleen  
Wonderly



Smiles, Smiles, and more Smiles from Sharon Moling, Julianna Wahl, Judy Malkmus, Mary Dunn: Freshmen Cheerleaders



Getting a drink at half time are Charlene Jones, Mary F. Rossatto, Peggy Gallagher, Judy Brown, "C" Team Cheerleaders.





In position for their cheer, "Swing to the right," are the senior Green Peppers, FIRST ROW: R. Cabrini, M. Creswell, M. Syverson, C. Johnson, J. O'Brien, M. Brown, D. Brownfield, J. Gill, K. Ferrel, L. Thompson, and J. Hesse. SECOND ROW: M. Staab, B. Wilson, M. Grace, J. Ronallo, M. Ryan, M. Dobson, R. Gyulay, P. Kneaves, M. Shaffer, M. Bowman, P. Messina. THIRD ROW: M. Meier, M. Peterson, B. Cox, V. Jenkins, M. Smith, L. Stoerman, J. Jakobe, J. Parrot, D. Cipolla, S. Spindell. FOURTH ROW: S. Adams, J. Crusoe, F. Myers, M. Eth, S. Teevan, C. Gillispie, A. Wilson, N. Zibung, J. Gladieux. FIFTH ROW: B. O'Donnell, M. Loschke, A. Shonborn, M. Lyndon, B. Howard, J. Joyce, R. Ratchford, and P. Stahl.



Toni Bonello

P  
r  
e  
s  
i  
d  
e  
n  
t



Jean Lally

S  
e  
c  
r  
e  
t  
a  
r  
y

## Green Peppers

V  
i  
c  
e  
  
P  
r  
e  
s  
i  
d  
e  
n  
t



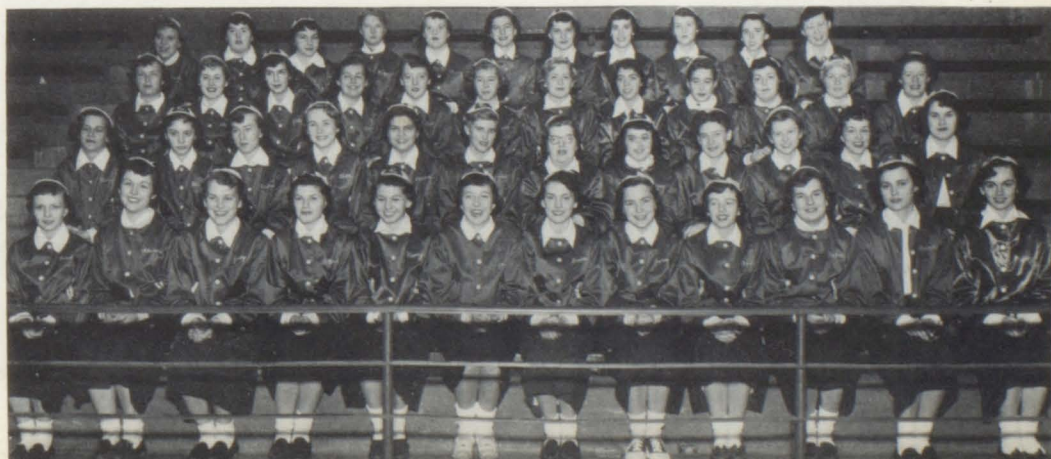
Rose Ann McGuire

"On Guard!" Ready to cheer the boys to victory as they play for Lillis are junior Pepsters. FIRST ROW: C. Johnson, S. Nichols, J. Howard, E. Mann, N. Young, M. Wilson, D. Johnson, J. Stoetzer, R. Wynne, H. Werkowitch, N. Ward, J. Copenhagen. SECOND ROW: M. Gowin, B. Behrens, E. Swann, R. Rast, D. Saitta, J. Akin, I. Ferguson, A. Haugh, P. Billings, V. Denning, J. Miller, and P. Lamb. THIRD ROW: M. Niemeyer, C. Buckles, J. Sansone, D. Mason, A. Connelly, M. Howerton, B. Beebe, L. McBrayer, S. Darnay, S. Jenkins, B. Abbott, S. Penna. FOURTH ROW: B. Beullens, C. Hurley, J. Curran, M. Moore, M. McQueeny, R. Kammerer, L. Aschwanden, N. Stafford, P. Lightner, J. Grace, and K. Downey.

T  
r  
e  
a  
s  
u  
r  
e  
r



Pat O'Donnell

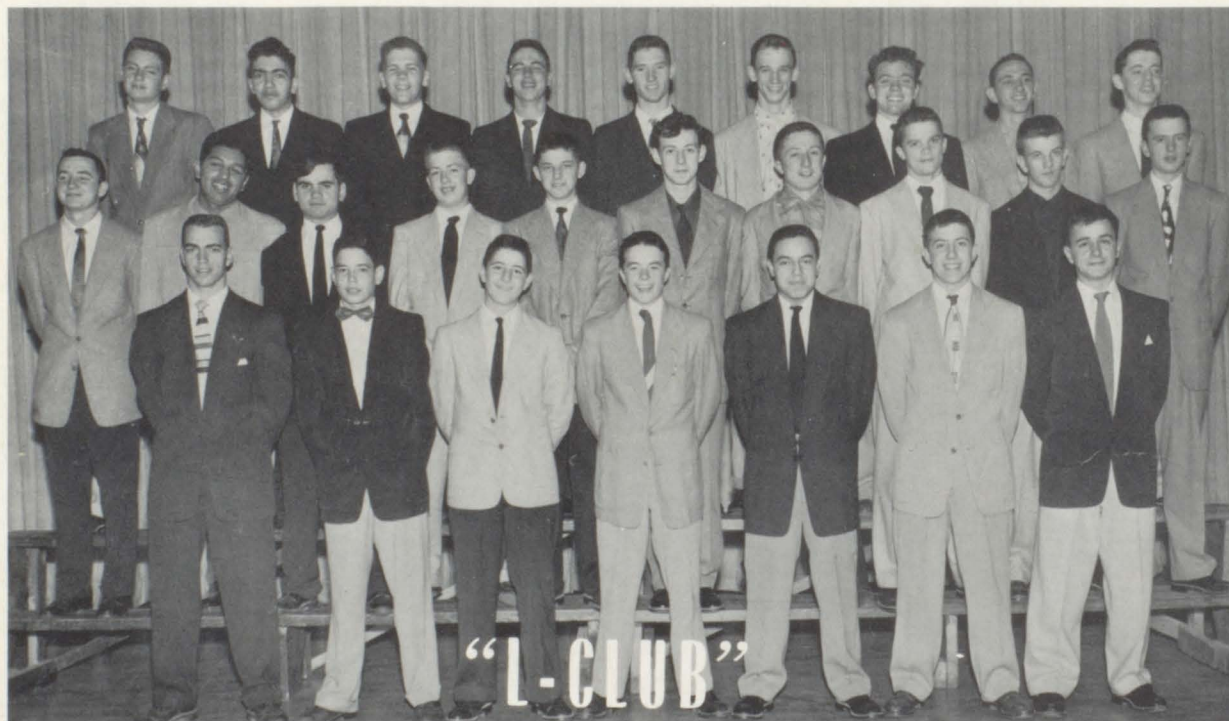




# THE BOYS BEHIND THE TROPHIES



Coach Joe Mintner, Warren Becker, Fred Williams, secretary; Phil Morrisey, president; John Dorrian, vice-president; Richard Renner, sergeant-at-arms; Joe Glynn, treasurer; and Coach John Schmiedler.



TOP ROW: John O'Neil, Don Eber, Ronald Eber, Doug Hicks, Tom Sublette, Jim Kalmus, Kenny Andrews, Hugh MacNamara, Gerry Daly. MIDDLE ROW: Jerry Stoetzer, John Zapien, Phil Whorton, Tom Bellman, Bob Morrisey, Larry Bonner, Gene Miceli, D. J. Powers, Mike MacNamara, Joe Kelly. BOTTOM ROW: Frank Nenninger, Jim Fitz Gerald, Mike Burasco, Ed Kelly, Ed Pulido, Charlie Bellman, Jerry Birtz.





CATHOLIC LEAGUE  
 ALL-STAR  
 TEAM  
 HUGH McNAMARA

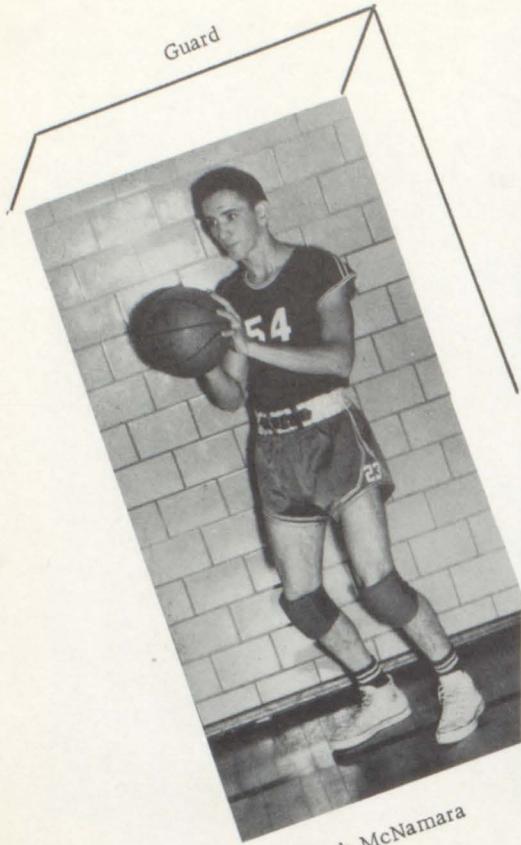
Lillis	42	St. Mary's	47
Lillis	59	Glennon	53
Lillis	41	Redemptorist	37
Lillis	58	De La Salle	51
Lillis	54	Rockhurst	53
Lillis	84	Hogan	35
Lillis	63	St. Mary's	40
Lillis	65	Glennon	58
Lillis	44	Redemptorist	54
Lillis	45	De La Salle	40
Lillis	52	Rockhurst	45
Lillis	51	Hogan	44

CATHOLIC LEAGUE  
 SECOND PLACE  
 ROCKHURST TOURNAMENT  
 SECOND PLACE



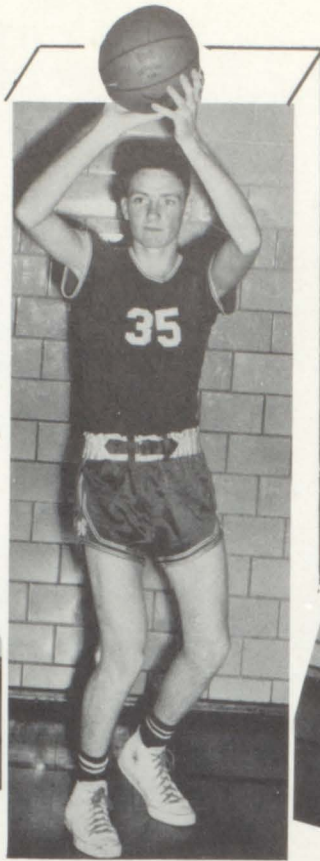
Page Sponsor  
ROCKHURST COLLEGE  
A college of Liberal Arts, Sciences,  
and Business for Men, Conducted by  
the Jesuit Fathers at 52nd and Troost  
Streets, Kansas City, Missouri -  
Hiland 6800

Guard



Hugh McNamara  
Senior

Forward



John McLaury  
Junior

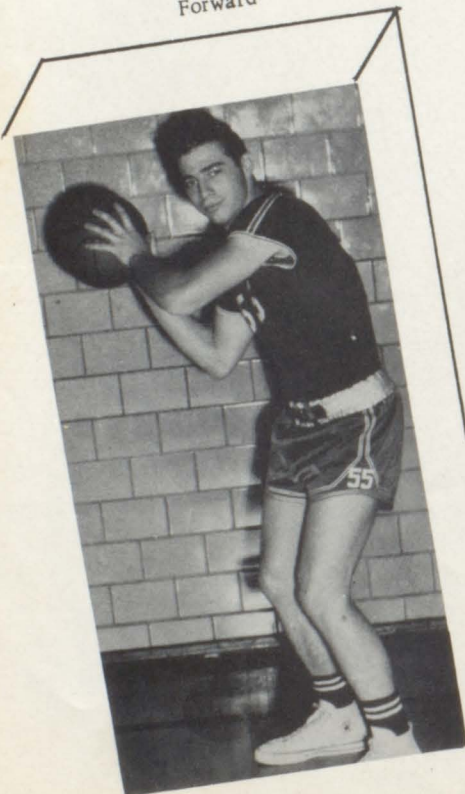
Forward



Doug Hicks  
Junior

# VARSITY

Forward



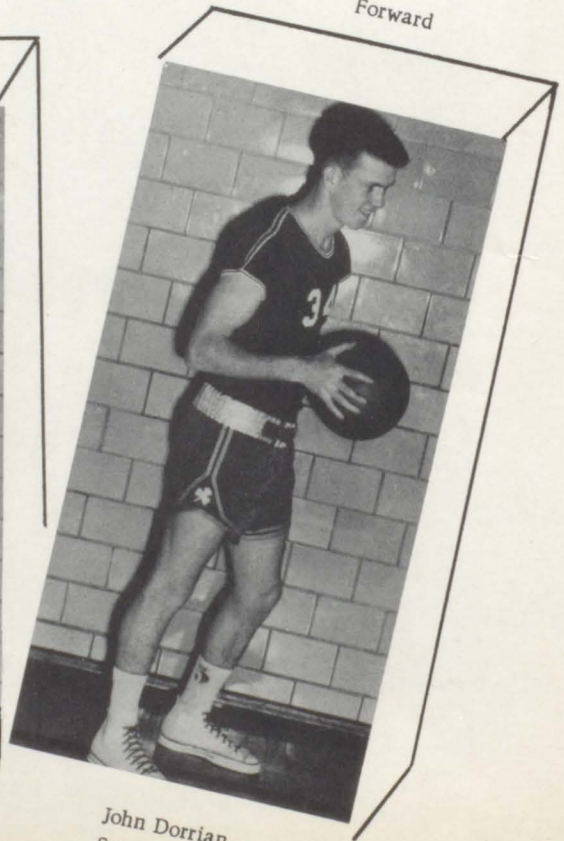
Phil Morrissey  
Senior

Center



John O'Neill  
Senior

Forward



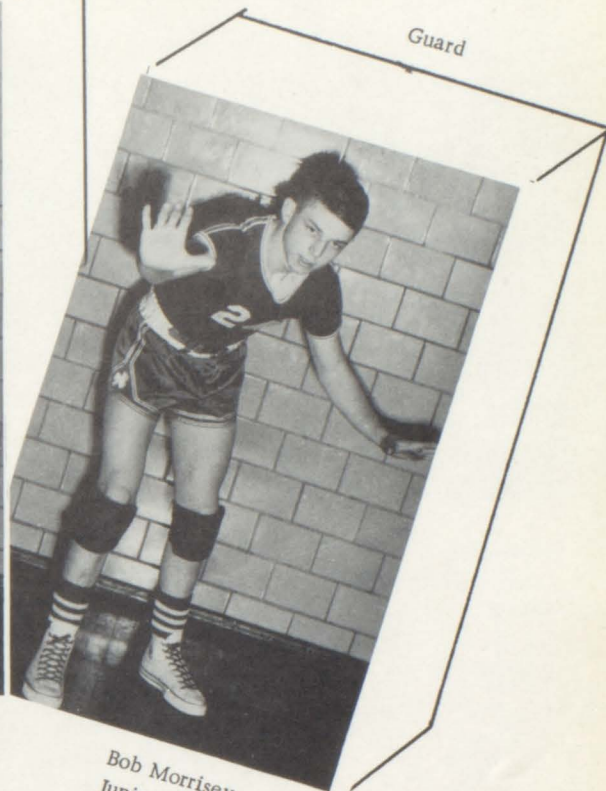
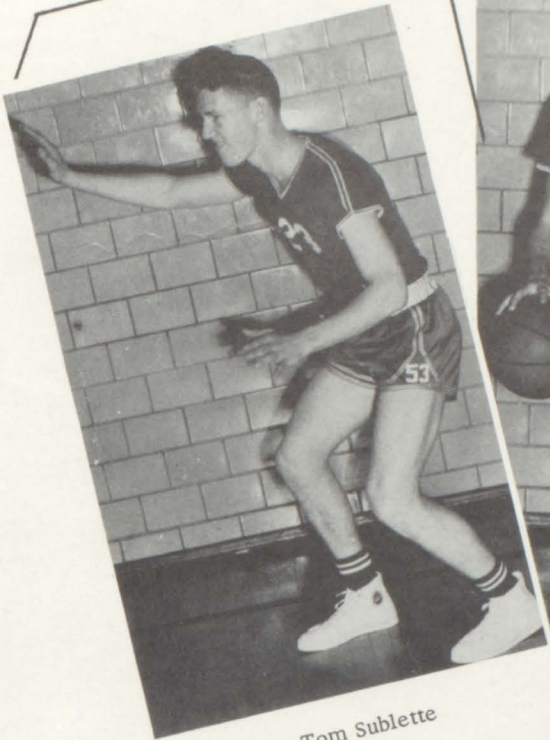
John Dorrian  
Senior



Forward

Center

Guard



Tom Sublette  
Junior

Mike McNamara  
Junior

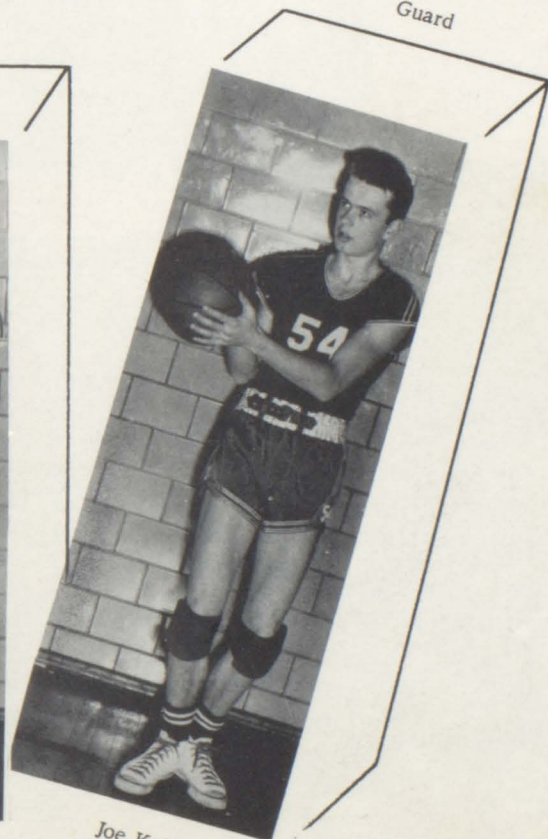
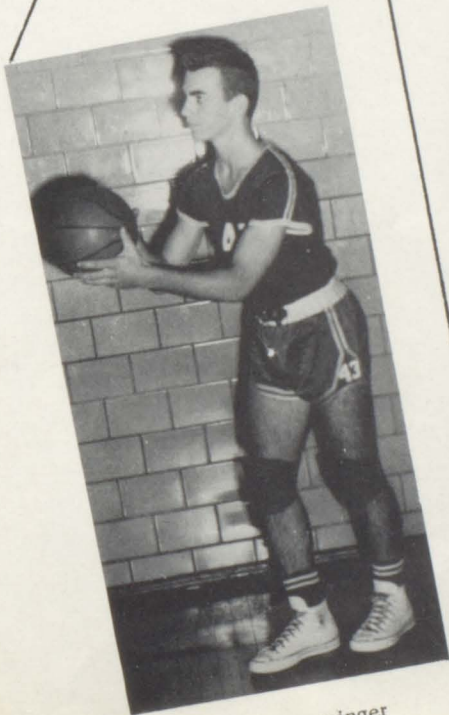
Bob Morrissey  
Junior

# CAGERS

Forward

Guard

Guard



Frank Nenninger  
Junior

Ed Kelly  
Sophomore

Joe Kelly  
Senior





B-TEAMERS ARE LEFT TO RIGHT: T. Sublette, D. J. Powers, G. Daly, K. Andrews, B. Springer, B. Morrissey, and F. Nenninger.

## FUTURE IRISH CAGE STARS



C-TEAM FROM TOP TO BOTTOM ARE: J. Fitzgerald, T. Kammerer, P. Roland, D. Smith, K. Andrews, and N. Metzger.



FROSH-BOTTOM ROW, LEFT TO RIGHT: M. Lonegon, J. Lockwood, P. Donnelly, G. Brietenstien, M. Cushing.  
TOP ROW, LEFT TO RIGHT: R. Gonzales, A. Smith, F. Morales, G. Lewis, J. Hanlen, and J. Salazar.



# I R I S H I N A C T I O N

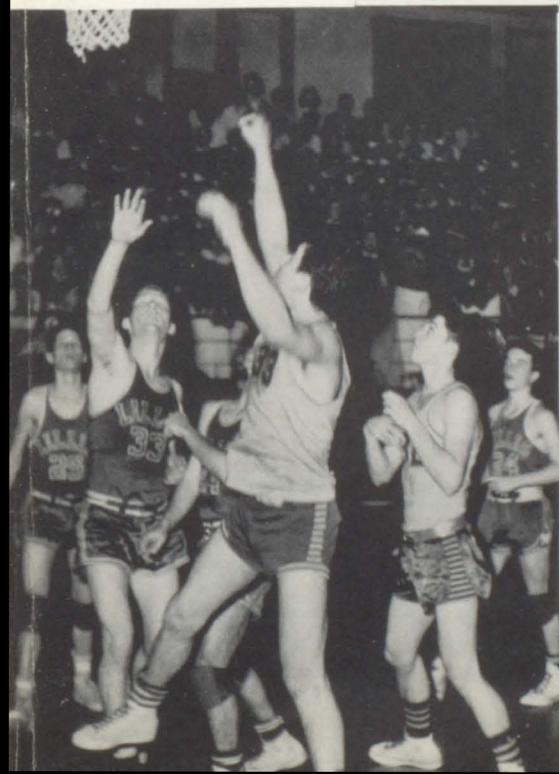
Directly below are H. McNamara, D. Hicks, P. Morrissey, and M. McNamara who seems to be caught in a daze. The picture was snapped during the Redemptorist game.



Above D. Hicks takes a rest, as M. McNamara rushes into the picture.

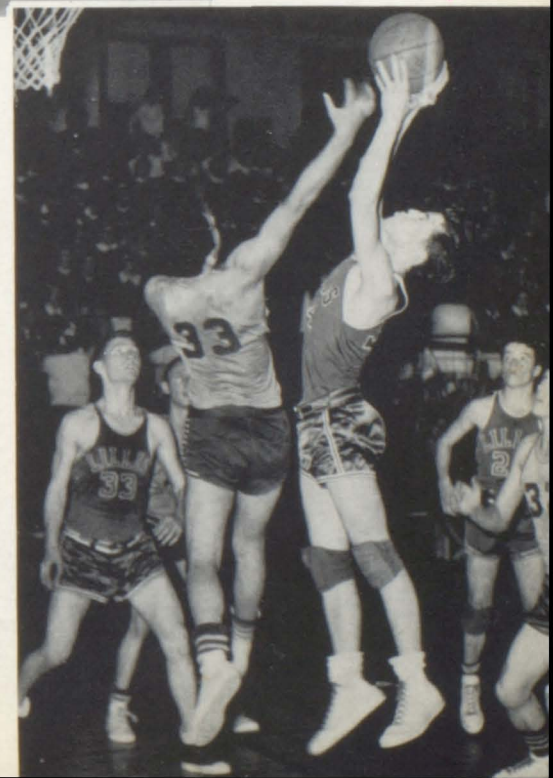


Above M. McNamara leaps high for a jump ball against Redemptorist. H. McNamara, J. Dorrion, and P. Morrissey wait patiently.



Members of the B-team on defense against the Rockets are: J. McAuliffe, T. Sublette, and E. Kelly.

Here Gerry Dally is shown in action against the Glennon Eagles, while T. Sublette, and Ed. Kelly look hopeful.





# REPORTING

## OUR

## NEWS



Approving and criticizing their work: Marilyn Eth and Paula Stahl, Editor and Co-Editor of the Lillistrator.

THE LILLISTRATOR -- All-Catholic



Truth Always! Joanne Parrott, Joe Glynn, Natalie Zibung, Mary Kate Loschke, Joe Cook, Bev Putthoff, Joan Crusoe, Mary Frances Shaffer, Ronald Eber, Chardell Buckles, Pat Kneaves, and Diane Johnson are hard at work for your next issue of the Lillistrator.

### Alumni News

by Anna M. Shonborn

Congratulations are in order for Lynda Malaney and Joe B. both of the class of '53 who have been chosen to consecrate themselves to the service of God. Lyn Scholastic

### Focus On Forest

Oh Happy Day!

Bright and early West

XII, No. 2

### Junior Excels In Book Review

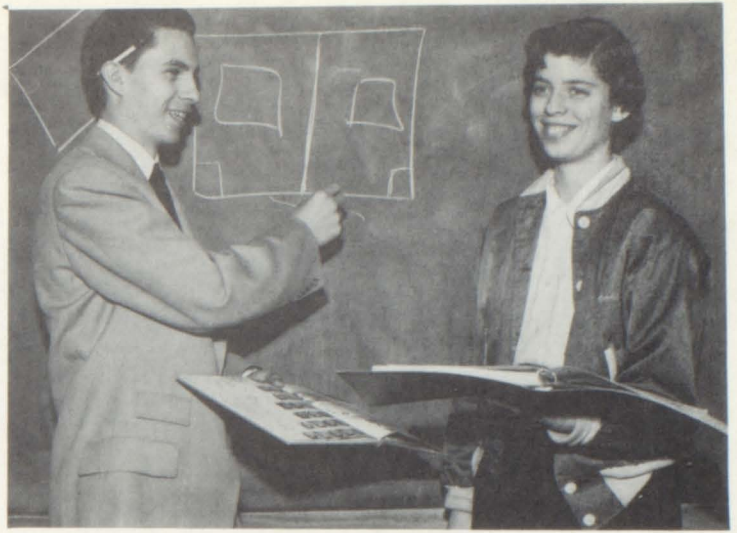
Regis Hickey, O.S.B., recently

### Joe's Jottings

Li What's that? Music from the lock brought a record player and a few music as they prepare for practice two weeks after the Glennon ad in anticipation of the cry of "pass the still



# Journalism Class



THE LILLISLOG -- First Honors

What's so funny? David O'Malley and Bobby O'Donnell, Editor and Associate Editor of Lillislog, explain a layout.



Seemingly hard at work: Anna Marie Shonborn, Bernadine Abbott, Gerry Daly, Shirley Gallagher, Larry Bonner, Judy Joyce, Frances Myers, Warren Becker, Bette Howard, Jody Balestrere and Rosemary Ratchford.

**Tommy the Termit  
Tells Tall Tales**

Maybe you don't know  
I've been around Lillis  
and I've found that I  
I keep my ears  
the Ter

The alumni members of Lillis  
High School will hold a meet-  
ing Sunday, Oct. 11 at 2 p.m.  
at Lillis to make plans for  
Homecoming. The date for  
Homecoming has been set for  
Nov. 1 when the Fightin' Irish  
play Redemptorist.  
Plans of the alumni  
dance Nov. 1

**LIST**

**Student Opinion**

No doubt you have heard stu-  
dents saying what they would do  
if things were turned around and  
they were in the place of the teach-  
ers. Just to give some of these  
students a really big chance to air  
some of their opinions, the fol-  
lowing question was put to you  
"you were principal, what would  
do?"  
Two well



# Photography Club

*“Hold  
that  
Pose”*



Mary Loschke and Beth Beebe enlarge some prints for the LILLISTRATOR.



Marie Howerton and Kenneth Musslyn trim pictures for the yearbook.

*“Smile”*



Marie Falk and Marjorie Comeau seen drying a picture of one of the classes.



Vincent Heegn, vice president, trying to decide which way the sun is shining.







A black and white photograph of a large, multi-story brick building, identified as E. Lillis High School. The building features several windows, some with decorative grilles. In the foreground, there are several large, mature trees with dense foliage, casting shadows on the ground. The overall scene is set in a well-maintained campus area.

SPRING AT LILLIS

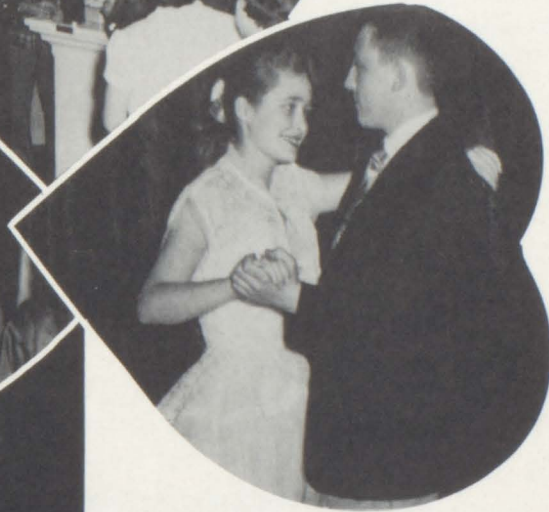
SEASON OF JOY



MARCH

APRIL

MAY

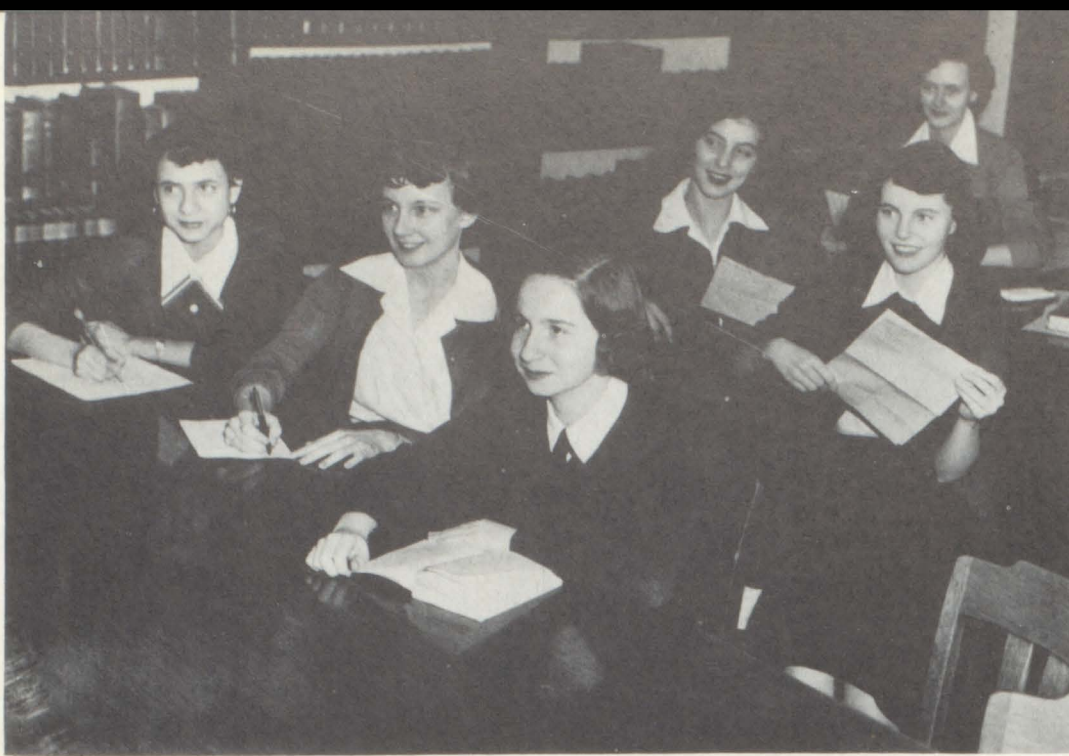


SPIRITUAL

SCHOLASTIC

SOCIAL





## *Religion*

Listening to further information from the librarian are, Thais Hairston, Joan Lang, Dorothy Nowell, Mary Cates, Susan Glynn, and Leona Heegn.

## *Freshmen & Sophomores*

Showing their brotherly love by helping one another find answers to the religion questions are, Charles Bachman, Jim Fitzgerald, John Howard, Pat Murphy, George Louis, and John Graves.





## *Contestants*



Upper classmen finding information for themselves are, Dorothy Haefling, Chardell Buckles, Sondra Wilson, Mary C. Loschke, Joan Copenhaver. . . Not present for the picture was Mary Meier.

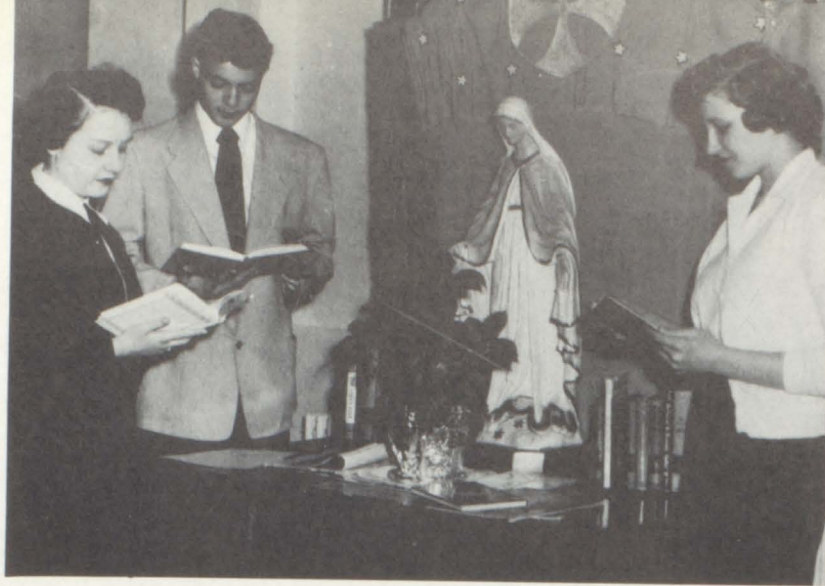
## *Juniors & Seniors*

Studying a doctrine of the Catholic faith are, Richard Bell, John Speight, Warren Becker, David O'Mally, Joe Chartier, and John Waller.





Mary's



Year

Getting to know Their Heavenly Mother through books are L to R; Marilyn Eth, Jerry Recob and Frances Myers.



L TO R: Frank Henke, Desmond Powers, and John Zapien express how they feel about Our Blessed Mother by being photographed with Her and taking top honors in the Poster, Cartoon, and Poetry divisions of the Marian Year Contest.



Looking at one of the many posters around school we see L to R; Jerry Recob, Pat Kneaves, Mary Frances Shaffer, Natalie Zibung, Charles Bachman, Barbara Mingucci, Joe Cook, and Jim Kalmus.



On the left we find, discussing their works, the 1st place winners of the Marian Year Contest L to R; Joan Copenhaver, Slogan; Sylvia Shoemaker, Essay; Georgia LaSala, Short Story.

IN MARY'S YEAR;  
IN MARY'S COUNTRY;  
BE MARY'S CHILD



# Sodality Spotlights



Crowning the May Queen is Paula Stahl, Prefect. Others attending are (LEFT TO RIGHT) Beverly Putthoff, Joe Gregg, Shirley Gallagher, Richard Renner, David O'Malley, Kathleen Wonderly, and Kenny Thorpe.



### OFFICERS:

STANDING: Paula Stahl, prefect; Richard Renner, v. prefect.  
SITTING: Joan Copenhaver, secretary; and Mary K. Loschke, treasurer.



SODALITY REPRESENTATIVES: L. TO R.: B. O'Donnell, M. Ryan, D. O'Malley, R. Cabrini, J. Stoetzer, J. Brink, R. Gyulay, J. Sansone, J. Howard, T. Lyndon, S. Nichols, R. Staab, N. Young, B. Wagner, P. Hellinger, T. Kammerer, G. Armilio, M. Gashchen, G. Tobler, J. Martin, J. Nolan, P. Rowland, M. Shea, R. Brown, J. Conran, (STANDING) D. Beerbower, J. Greaves, J. Hanlon, P. Morgan.

of  
'53-'54



# Master of the Fine

Winners of art awards are, L TO R: Ralph Behrens, James Homer, Barbara Behrens, James Martin, James Hanlon. SEATED: Ruth Rast.



## POEMS

Winners of literary recognition for works published in the high school anthology are, L TO R: James Farris, Carey Ruder, Bill Badgett, John Speight, Tom Kammerer.



## ESSAYS



## Arts

Holding their merit certificates for anthology works are, L TO R: Bernadine Abbott, Jack Walton, Janet Page, John Zapien, Diane Johnson.

## REVIEWS

More anthology winners are, L TO R: Nancy Young, Janet Curran, Judy Sansone, Joanne Parrott, Margie Comeau, SEATED: Lenore French, Pat Billings.

## SHORT STORIES

Representing Lillis in the Book Review contest was Mary McQueeney.







**TWO-YEAR MEMBERS ARE:**

- Mary L. Creswell
- Anna M. Shonborn
- Joan Crusoe
- David O'Malley
- Mary C. Loschke
- Shirley Gallagher
- Frances Meyers
- Mary F. Shaffer
- Kenneth Thorpe
- Joe Cook
- Paula Stahl
- Marilyn Eth
- Frank Lucido

**NEW SENIORS ARE:**

- Jody Balestrere
- Sue Adams
- Mary Ann Staab
- Mary Alexander
- Warren Becker
- Joe Glynn
- Sondra Wilson
- Mary Ann Meier
- Mary Jo Bowman
- Mary Ann Peterson



- Robert Morrisey
- Barbara Behrens
- Ruth Rast
- Joan Copenhaver
- Bernadine Abbott
- Marjorie Comeau
- Anna Marie Falk
- Patrica Billings
- John Waller and
- not pictured
- Chardell Buckles
- are new members
- from the Junior
- Class.



# SOPHOMORE GLEE CLUBS



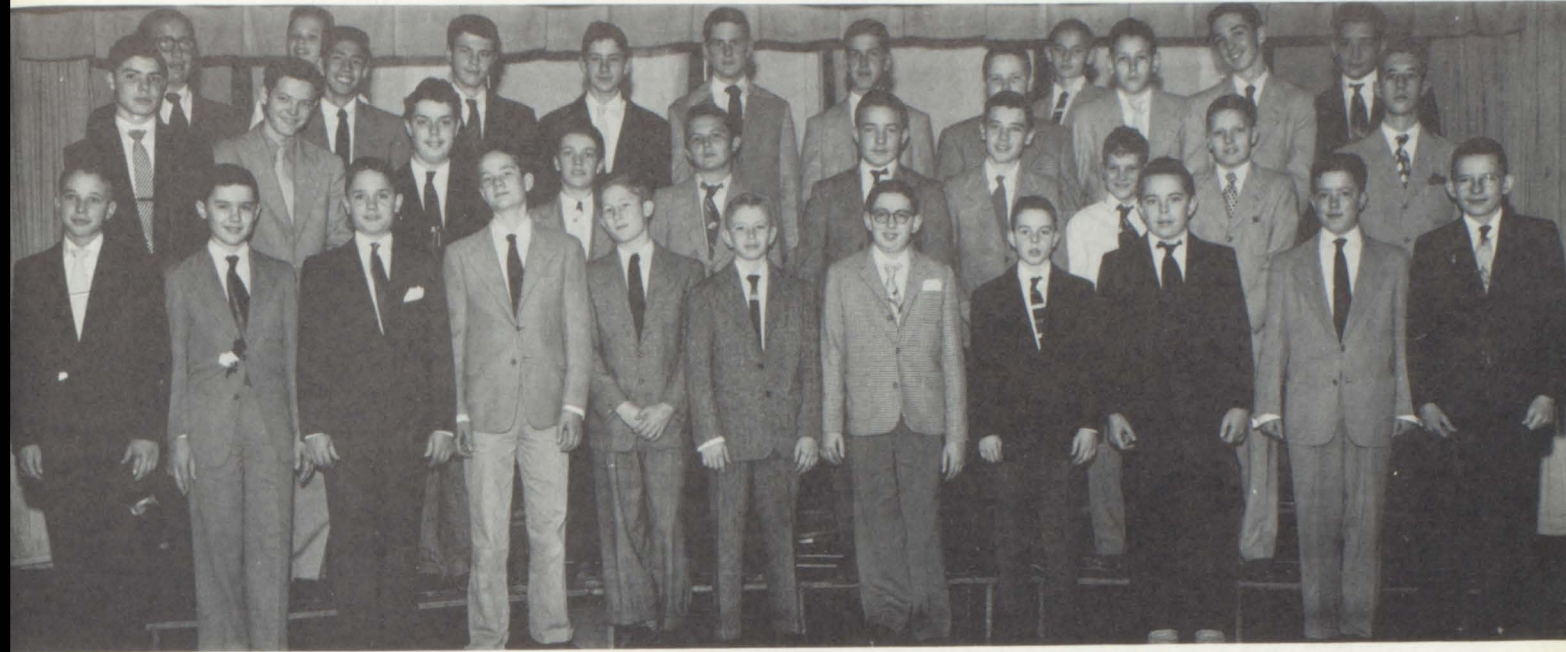
The sophomore songbirds tuning up for their next number at the freshman-sophomore speech contest.



The smiling faces of the sophomore boys as they look forward to their next medley of songs.



# FRESHMAN GLEE CLUB



The future appears bright as we look forward to the freshman boys' becoming our leading crooners.



The latest addition to the Lillis vocalists is the freshman girls' glee club, who provided much enjoyment throughout the year.



# OPERETTA

## The Forest Prince

AN OPERETTA IN THREE ACTS

PRESENTED BY

Lillis High School



Book, Lyrics, and Music

by

Monroe, Tillotson, and Tschaikowski

Lillis Auditorium



Tatiana smiles pleasantly upon hearing the news that Vaslav is really prince of Roene.

Paula Stahl and Jerry Stoetzer pose for a picture before the opening curtain.

Forest Prince  
Tatiana, a princess of Roene, is held the Cossacks. Although Dmitri, prince of fiance, is general of Tsar Mikhail's cowardly either to rescue Tatiana or def invading Tartars.

Vaslav, chief of the Cossacks, goes to get the ransom. He finds himself and offers the help of the Cossack common enemy, the Tartars.

The Tartars are beaten, and the pledge peace. Events show that Vas Mikhail, long ago captured by the C royal b marry

TIME-

SCENE  
ACT  
ACT  
ACT



Vaslav tries to comfort Tatiana after her capture by the Cossacks, as the chorus looks on.



Tatiana sings of her home land to (top row) M. Loschke, R. Gyulay, and M. Syverson; E. Jones, M. Peterson, and J. Gladieux; R. Cabrini, M. Dobson, M. Grace, J. Parrott, J. Joyce, lady-in-waiting; S. Burke, M. Meier, and A. Wilson who listen intently.



# CAST



Toni Bonello "Mother Vanya" announces good news as Judy Joyce "Tatiana's lady in waiting" listens eagerly.

## MUSICAL SYNOPSIS

ACT 1		Orches
and Free	Tatiana & Cossack	Cossack
are in My Heart		Roene
sack: Maid		
ers from the Steppes	Vaslav and	Cossack
and Yva on Ice	Tatiana and	Cossack
		Cossack



Joe Glynn as "Ilytch" a Cossack soldier.

"Prince Dmitri" played by David O'Mally.

## CAST OF CHARACTERS

- Tatiana, Princess of Roene, held Cossacks
- Sonia, friendly Cossack girl
- Vaslav, chief of the Cossacks
- Ivan, Cossack friend of Sonia and Tatiana's Lady-in-Waiting
- Ilytch, a Cossack
- Mother Vanya, old woman of Cossacks



- ### STAFF
- Gladys Hannay
  - Lillis Dads Club
  - Lillis Dads Club
  - Joseph Tschirhart
  - Richard Bell, Byron Fundis
  - Tschirhart, Kenneth Musslyn,
  - David Pack, Frank Georgie
  - Clothing Classes
  - Printing Classes
  - Behrens, June Beebe, Dolores
  - Mary Elizabeth Dobson,
  - Ann, Ruth Rast, Marlene

- ### PERSONNEL
- Kerans, Norman Beauchamp
  - Dorothy Nowell
  - Eloise Reisner
  - Frank Lucido
  - Joy Powell



"Laugh and the world laughs with you" is what the court jester Betty Tallman is trying to put across to "Tsar Mikhail" Ronald Eber, her sad ruler.

- A Tsar is Our Guest
- The Use of the Brain
- Bulba
- When You Leave My Forest
- Sing in Salutation
- A Dreamy Walz
- Kharkov Caprice
- Sweet to Remember
- Hail to Our Forest Prince

"Are you lying again" seems to be what Claire Gillespie "Sonia" is saying to "Ivan" Joe Chartier.



Paul Stahl "Tatiana" watches with wonder as the Cossacks begin to gather around her.



# WE SING

## COSSACK GIRLS ACT I

Bonnie Armour	Elaine Cabrini
Sally Allegri	Judy Gladieux
Mary Brinkoetter	Evelyn Jones
Anna Marie Shonborn	Mary Carol Grace
Barbara Cox	Shirley Gallagher
Judy Gill	Mary Elizabeth Brown
Kathryn Ferrel	Mary Ann Meier
Jo Ann Hessee	Mary Lou Creswell
Shirley Burke	Frances Myers
Mary Louise Chandler	Mary Catherine Loschke
	Mary Jo Bowman
	Smith



Smiling skaters are, Carolyn Johnson and Larry Bonner.



Soldiers preparing to march to victory led by J. Stoetzer and J. Glynn are, M. Kennedy, S. Bliss, J. McAuliffe, J. Horner, L. Bonner, B. Wagner, J. Recob, H. Demmel, and R. Lucero.



Graceful ballet dancers are, Sue Penna, Sharon King, and Tyleen Daugherty.

bott	Diane	Walton
anden	Nola Stafford	nes
	Mary Niemeyer	Valler
llens	Beverly Raynor	Thorpe
	Susan Jenkins	
	Marjorie Comeau	
owney	Janet Curran	
	Mary Joan Gray	
	mary Kammerer	
	witch	



"Soldiers in Review" . . . M. Miles, J. Horner, B. Sanders, D. Hoberecht, J. Kramer, J. McLaury, W. Becker, and D. Newhouse.





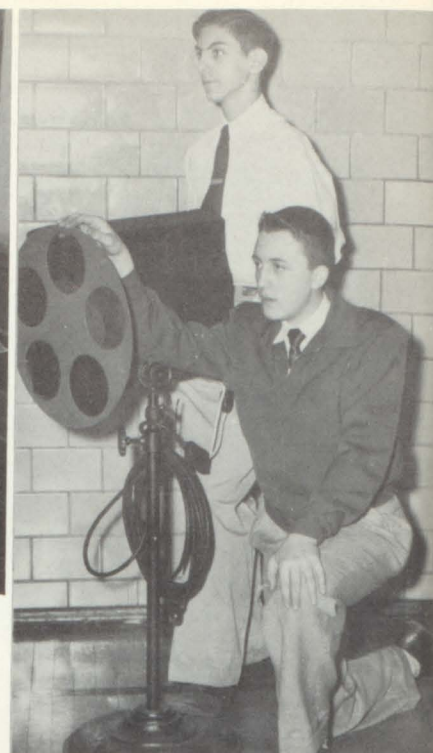




"Ready on curtain and lights," are Ted Tschirhart and Kenneth Musslyn.



Providing musical strains for "The Forest Prince" were Frank Lucido, senior, and Dorothy Nowell, freshman.



Adding a little color are Richard Bell and Byron Fundis.



Quick scenery changes were David Pack's specialty.



Faithful for those long hours of practice were Joy Powell, and Carolyn Staab, and Mary Ann Staab who is not pictured.



"Is this where it goes?" say Frank Georgie and Donald Eber.



Raiding the supply cupboard are these scenery painters, Barbara Behrens, June Beebe, Mary E. Dobson, Ruth Rast, Marlene Sherwood, Joe Glynn and Dolores Haefling.

BEHIND  
THE  
SCENES  
OF THE  
OPERA



# Remember The Prom



"It was fun from beginning to end," say committee heads, Anna Marie Shonborn, refreshments; Jody Balestrere, decorations; Beverly Putthoff, orchestra; and Rosemary Gyulay, invitations.

of  
'53



General Chairman, Joe Glynn, holds a meeting.



Putting up a cloud to give that "outside of heaven" look to the gym are, (coming down) Joe Glynn, Frances Myers, Mary Lou Creswell, Natalie Zibung (one eye only), James Horner, and Betty Wilson.



"Pausing to pose," are Kathryn Ferrel, Jody Balestrere, Louise Thompson, Joanne Hesse, John O'Neil, JoAnn Jakobe, amid the work of decoration.



O  
U  
T  
S  
I  
D  
E

O  
F  
H  
E  
A  
V  
E  
N





# YEA DARK HORSE

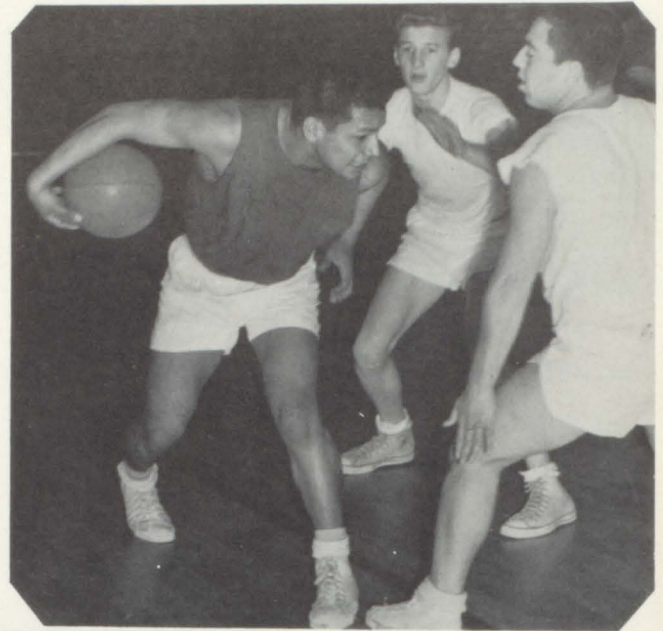
When Mr. Wm. Schlegel sports writer for the Kansas City Star named Lillis the Dark Horse, he had no idea of the skits at Pep Rallies which were to arise from it. . . . "Dee-Dee" the wonder horse who came up unpredicted to capture second place in the League and also second place in a Pre-Season Tournament was portrayed by D. J. Powers & Doug Hicks. "Bo-Bo" O'Neill, "Red" Dorrian, "Aloysius" Morrisey, are seen admiring "Dee-Dee" . . . A Redemptorist Rocket was played by Jack Lockwood. Another fellow who "Cried" over a dead rocket was Pat Donnelly. . . . The rider of the Dark Horse was "Old Tex O'Neil" John McLaurry, who did a swell job.



Mr. Schlegel the originator of the "Dark Horse"

## CHAMPIONS OF

## INTRA-MURALS



Showing in the top picture are Ronald Eber, Joe Kelly, and Bob Johnson.



Waiting tensely for the ball is Sam Bliss



Displaying some very intricate ball handling in the intramural cage games is Bob Blue pictured above with two opponents determined to change the circumstances. They are Bill Kalmus and Ed Pulido.

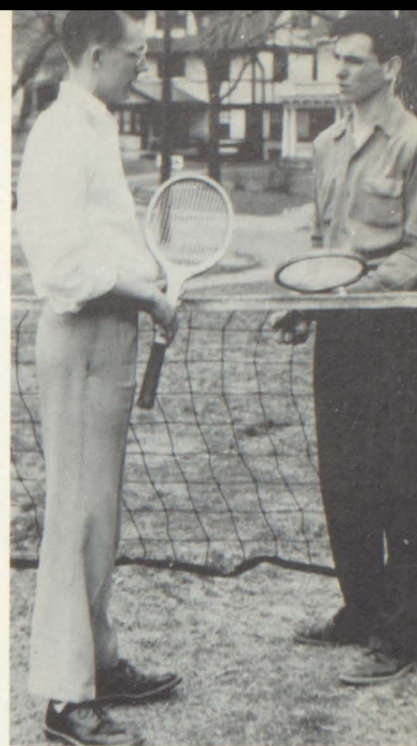
Fighting for the victorious 200 in the bottom picture are Dick Renner, slapping the ball as Mike Kennedy, Warren Becker and Gene Miceli close in.



# Spring Sports



Gary Trueblood clears the first hurdle with ease as he practices for a track meet.



"Leaders of the Racquet Squad" were Vince Heegn and James Bresina.



Two senior members of this year's baseball team smile over the season's prospects. They are Jerry Biritz and Freddie Williams.

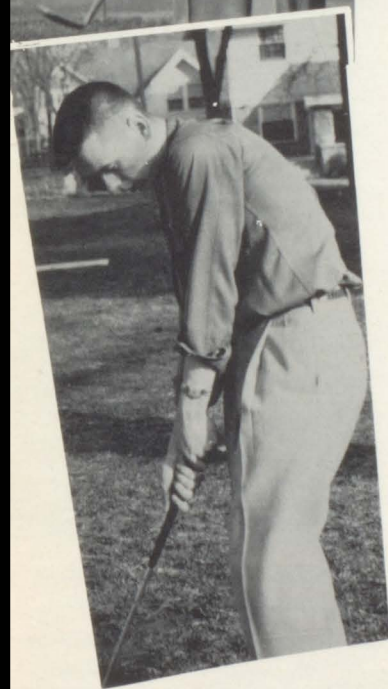
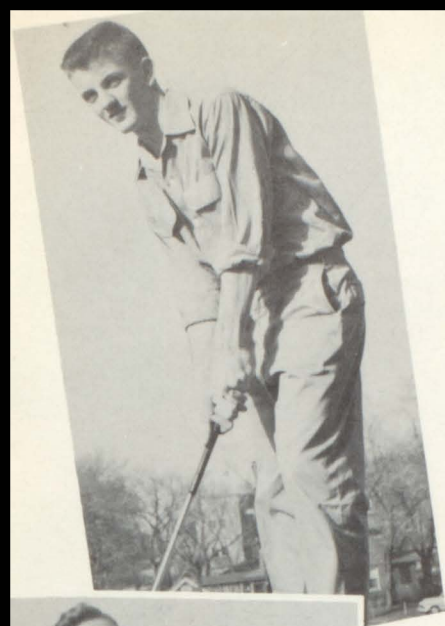


Pictured above is Doug Hicks as he gets ready to hurl the shotput.



Larry Bonner, junior, dashes toward the camera on the first lap of the 880.

Representing Lillis in golf this year were Mike McNamara, Richard Pallanich, and Joe Kelly. Making it a foursome was Gary Trueblood (not pictured).







Bernadine Abbott



Eddie DeLouis



Anna M. Haugh



Jean Lally



Mike Dillon  
Homeroom Leader



Mary Jo Wilson



Shirley Cogdell



Phil Denning



Carol Hurley



Tommy Lyndon



Jack Porter



Patrick Williams

204



Anna M. Callegari



Kathleen Downey



Susie Jenkins



Ellen Mann



Sharon Nichols



D. J. Powers



John Zapien



Marjorie Comeau



Maudedith Edmonds



Diane Johnson  
Co-Leader



Jim McAuliffe



Pat O'Donnell



Virgil Roark



Mary Gowin



Gail Darling



Joyce Grace



Joan McCleery



David Pack



Carey Ruder



Beatrice Schulz



Susan Darnay

Sister Terrance; Sponsor



John McDowell



Mary S. Penna



Jack Walton



Beverly Raynor



# QUIET

# PLEASE!

Leader

Co-Leader



Frank  
Georgie



Donna  
Mason



Mary  
McQueeney



Thomas  
Sublette



Diane  
Saitta  
Robert  
Wagner



Peggy  
Lightner



Michael  
McNamara



JoAnn  
Stoetzer



Eleanor  
Swann  
Mary Catherine  
Upton



Nancy  
DeGhelder



Helen  
Werkowitch



Ruth Ann  
Rast



2  
0  
5



Joe  
Chartier



John  
Speight



Theresa  
Mesmer



Robert  
Morrisey



Ruth  
Wynne



JoAnn  
Geary



Patricia  
Billings



Norman  
Drimmel



Marilyn  
Brady



John  
Baker



Francis  
Anderson



Thomas  
Bellman



Barbara  
Behrens

# ARTISTS AT WORK



Sponsor: Sister Egberta





Janet Curran      John Sullivan      Betty Tallman      Carol Johnson      John McLaury      Barbara DiBon      Marion Capello

# So Proudly We Hail



Bill Badgett      Judy Sansone      Leta Coleman      Pat Marsee      Bill Dixon      Jo Ann Miller



Gary Trueblood      Doug Hicks      Chardell Buckles      Judy Howard      Eleanor Paura  
Homeroom Leader



Bill Kalmus Co-Leader      Loretta Metzger      Larry Bonner      Vanalee Easter      Vincent Heegn



# 302



John Waller      Barbara Beulans      Mary Neimeyer      Sheila Brady      John Clark      Jim Bresina

Sponsor: Sister Andrea

Conrad Phelps      Anna Marie Connelly      Eddie Pulido      Pat Healy      LaVonna McBrayer      Mick Miles      Pat Lamb







Janice  
Akin



Laura  
Aschwenden



Beth  
Beebe



Charles  
Bellman



Jerry  
Bogert



Mike  
Coughlin

# 303



Hans  
Demmel



Virginia  
Denning



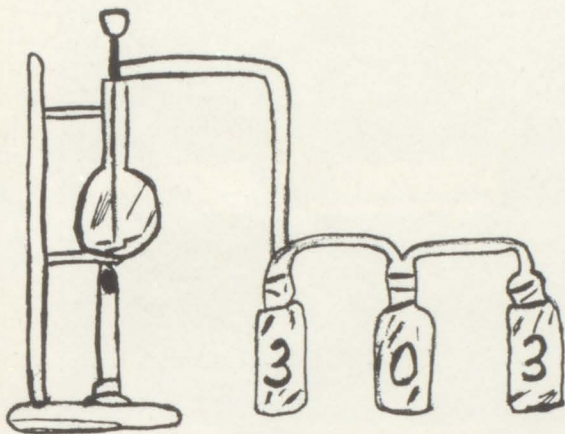
Marie  
Falk



Ida  
Ferguson



Sonja  
Geschwin



Mary Joan  
Gray



Dorothy  
Haefling



Marie  
Howerton



Gerry Daly  
Homeroom  
Leader



Joan Copenhaver  
Co-Leader



Rosemary  
Kammerer



Bill  
McMahon



Cecelia  
Meyers

Sponsor: Sister Maxine



Mary Kay  
Moore



Kenneth  
Musslyn



Frank  
Nenninger



Michael  
O'Malley



June  
Pfeiffer



Nola  
Stafford



Ted  
Tschirhart



Nancy  
Ward



Bob  
Wenninghoff



Nancy  
Young







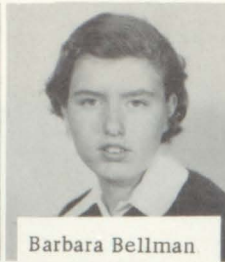
James Fitzgerald  
Homeroom Leader



Liane Hendrix  
Co-Homeroom  
Leader



Ivan Abbot



Barbara Bellman



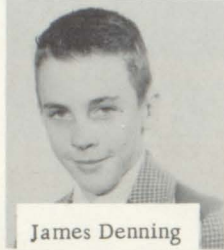
Thomas Bissing



James DeGan



Patricia Delaney



James Denning



James Farris



Susan Glynn



Carol Goodman



Katherine Grable



Sandra Herner



Aileene Herrbach



Connie Herter



Marilyn Howard



John Howard



John Jumara



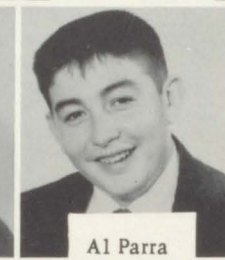
Peggy Kalwei



Jean Miroslaw



Bernice Myers



Al Parra



Shirley Peterson



Margie Peterson



Joy Powell



Roseann Reno



Mary F. Rossato



Patrick Rowland



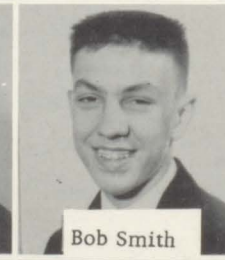
Mary E. Ryan



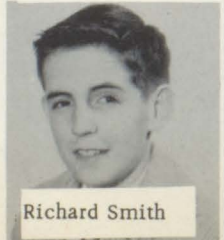
Judith Schreier



Bonnie Sharky



Bob Smith



Richard Smith



Carolyn Staab



Rita Staab



Patricia Summers



Mary Tarwater

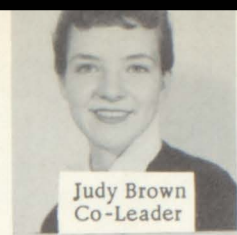




Louis Nicholson  
Homeroom Leader

Sponsor:  
Sister Mary Richard

# 306



Judy Brown  
Co-Leader



Frances McMahon



Tom Hillbrand



Judy Gregg



Bob Dorrian



Janet Page



Jim Overman



Judy Conran



Mary Jo Shea



Ramona Reyes



Ellis Herbst



Kathleen Teevan



Diane Frame



Martha La Van



Charlene Tschirhart



Teresa Freeman



Dennis Rudolph



Grace Cipolla



Mike McMahon



Delilah Kremers



James Romano



Mary Jo Monahan



Charlene Jones



Norman Boyle



Beverly Prather



Diana Blackshear



Jack Schnepf



Jo Ann Lalumia



Frank Henke



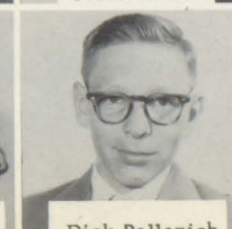
Judy Straley



Byron Fundis



Katherine Dii Bon



Dick Pallanich



Helen Thorpe





# 401



Regina  
Allin

Kenneth  
Andrews

Virginia  
Arth

Lola  
Benner



Robert  
Brown

Mary  
Cates

Patricia  
Curry

Mary T.  
Egan



James  
Farrar

Susie  
Frazee

Lenore  
French

Darlene  
Gable



Daniel  
Gaschen

James  
Gregory

Maxine  
Herner



Edward Kelly  
Homeroom  
Leader

Georgia Armilio  
Co-Leader

Sponsor: Sister Emerich



Andrew  
Johnson

Betty  
Kreamsreiter



Martha  
Lahman

Loretta  
Lalumia

Margaret  
Lohe



Clarence  
Madel

Peggy  
McGuire

Nick  
Metzger

Jim  
O'Sullivan

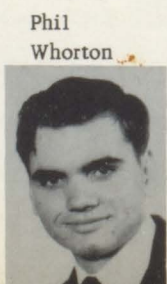


Josephine  
Reyes  
Betty  
Williams

Mary  
Shine  
Sandra  
Willis

Robert  
Steele  
Judith  
Wilson

Dorothy  
Taylor  
Richard  
Williams



Phil  
Whorton







Sharon King      Carlene Werr      Phil Arensburg      Judy Meyer      Margaret Thorpe



Leona Heegn  
Homeroom  
Leader

Co-Leader

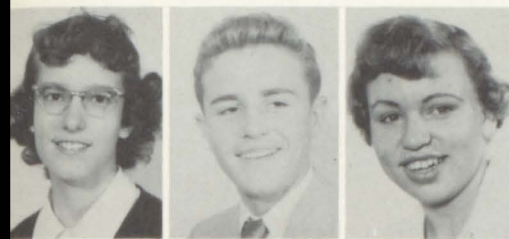


Mary Kay Guillaume      Tom Schmidt      Marvin Gross      Shirley Smith



Bill Sprenger

403



Patricia Hellinger      Mike NovaGradac      Rosemary Joplin



Marlene Sherwood      Earlene Cockell



Tom Kammerer      Helen Vogel



Peggy Melia      Ivan Stoerman      Larry Clark



Mary T. O'Neill



Katherine Kramer      Loretta Schuh      Georgia La Sala      Pat Murphy      Bill Nixon  
James Whitaker      Margaret Lucas      Anna Marie Seitzer

Sponsor: Sister Loretta







402



Leader

Co-Leader

Sponsor: Sister Dolores

Kenneth Daub  
Juliana Wahl



Delma Beerbower  
Frances Beullens  
Angelia Bivona  
Catherine Boyd  
Robert Crass  
Jerry Curtis



Michael Cushing  
Faye Daugherty  
Jerry Dixon  
Michael Doyle  
Peggy Egan  
Maxine Elizondo



Charles Gibbs  
Marguerite Haidusek  
Edonna Hinkebein  
Carole Horan  
Richard Jarrett  
Carol Kiefer



Kay Legate  
Joyce Lucas  
Regina McCleery  
James Martin  
Mary Kay Mishmash  
Dorothy Nowell



Mary Ann O'Connor  
Wayne Perry  
Richard Pierceall  
Janice Pipes  
Larry Reynolds  
Kathleen Ryan



Jerry Salazar  
Mary Stitz  
Josephine Tremonti  
Francis Tucker  
Marian Wilson  
Donna Zeller



Homeroom Leader    Co-Leader



Thais  
Hairston



Frank Morales



Sylvia Brown



Walter  
Langley



Fred  
Roberts



Bobby  
Rodgers



Caroline  
McMichaels



Sue  
Miller



Joan  
Sullivan



Denise  
Gangel



Ann  
Lynch



Mary Frances  
Danella



Joe  
Stephan



Jim  
Hanlon



Annette  
Buck



Vicki  
Clark



Pat  
Conelly



Mary  
Laughlin



Bill  
Lawrence



Tom  
Bresina



Rosemary  
Hawver



Ann  
McGonig



Judy  
Long



Sharon  
Moling



Loretta  
Brice



Jo Ellen  
Nolan



Margaret  
Brady



Ed  
Vogel



Henry  
Heisberger



Jerry  
O'Malle



Mary  
Nichols



Bill  
Barry



Betty  
Coleman



Bonnie  
Hudson

404



4

0

5



Leal Abbott

June Beebe

Sponsor: Sister Aniceta

Bernie Behlau

Charles Bernardi



George Breitenstein

Tim Bradley

John Callahan



Mary Ann Dunn  
Homeroom  
Leader

Ruth Ann Curran

JoAnn Dionisio

Loretta Downey



Donna Easter

Susan Fundis

Barbara Geschwind

Richard Gonzales

John Graves

Delores Haefling



Charles Bachman  
Co-Leader



George Hiller

Charles Humphery

Marianna King

Frances Kneaves

Mike Lonegan

Pat O'Neil



Eva Sanchez

Rita Schreier

James Sevart

Kathleen Shea

James Shea

Carole Stevenson



Ace Smith

Ruth Ann Stuckey

La Reine Swann

Genevieve Tobler

Alice Watkins





Ross Abercrombie

4



Ralph Behrens

0



Richard Bellman

6



Ellen Bensing



Carol Bouse



William Cox



Cosby Didde



Betty Adams  
Homeroom  
Leader



Patrick Donnelly



Pat Dii Bon



Donna Du Bois



Margaret Gaschen



Ada Marie Georgie



Vicki Houtz



Mary Lang



Georgia Lightner



Jack Lockwood



Carol Sue Luckner



Jerry King



Judith Malkmus



George Louis  
Co-Leader



Mary Jo Maloney



Gerald Mingucci



Philip Morgan



Mary Murphy



Mary Jo Ponak



Sylvia Pulido



Zita Pulido



Karen Schupfer



John Shaffer



Rosalie Spencer



James Sweeney

Sponsor:  
Sister Mary Donald



Edward Tallman



Vivian Thompson



ROOM 200: S. Allegri, B. Armour, T. Bonello, M. Brinkoetter, B. Cox, M. Cummings, R. Curley, K. Ferrel, S. Gallagher, J. Gill, C. Gillispie, J. Hesse, J. Jakobe, J. Joyce, P. Kneaves, B. O'Donnell, M. Shaffer, L. Storeman, K. Wonderly, J. Brown, W. Becker, J. Davis, J. Dorrian, D. Renner, R. Eber, B. Johnson, M. Kennedy, J. Kelly, G. Miceli, P. Morrisey, J. O'Neil.

ROOM 202: E. Arth, M. Bowman, J. Brink, D. Brownfield, M. Burasco, E. Cabrini, M. Creswell, D. Duffy, J. Gladieux, M. Grace, J. Horner, J. Kalmus, V. Jenkins, E. Jones, J. Jones, P. Messina, D. Morgan, B. Murphy, R. McGuire, J. Parrott, D. Newhouse, A. Parr, J. Payne, B. Plassmeyer, R. Ratchford, B. Sanders, S. Spindell, M. Staab, M. Syverson, L. Thompson, J. Tschirhart, F. Williams, J. Zapien.

ROOM 201: S. Adams, M. Alexander, M. Brown, S. Burke, J. Allan, M. L. Chandlee, K. Clark, E. Clossick, J. Cook, J. Crusoe, M. Gibbs, J. Gregg, J. Harris, D. Hoberecht, C. Jingson, M. Lyndon, F. Lucido, M. Mansour, B. Mingucci, F. Myers, J. O'Brien, D. O'Malley, W. Page, J. Roecker, J. Ranallo, M. Ryan, A.M. Shonborn, M. Smith, K. Thorpe, A. Wilson, N. Zibung.

ROOM 203: H. McNamara, B. Putthoff, B. Howard, J. Balestrere, J. Prather, M. Eth, D. Eber, R. Bell, J. Biritz, M. Meir, J. Kramer, M. Dobson, J. Glynn, M. Nicholson, L. Bowman, J. Recob, J. Stoetzer, M. Peterson, K. Skinner, K. Johnson, S. Shoemaker, J. Conran, R. Gyulay, D. Cipolla, P. Stahl, B. Wilson, E. Willis, J. Crass, M. Loschke.

ROOM 406: R. Abercrombie, B. Adams, R. Behrens, R. Bellman, E. Bensing, C. Bouse, B. Cox, C. Dide, P. Donnelly, P. DiBon, D. DuBois, M. Gaschen, A.M. Georgie, V. Houtz, M. Lang, G. Lightner, G. Louis, J. Lockwood, C. Luckner, J. King, J. Malkmus, M. Maloney, G. Mingucci, P. Morgan, M. Murphy, M. Ponak, S. Pulido, Z. Pulido, K. Schupfer, J. Shaffer, R. Spencer, J. Sweeney, E. Tallman, V. Thompson.

ROOM 204: J. McDowell, S. Nichols, P. O'Donnell, M. M. Penna, D. Powers, J. Porter, B. Raynor, V. Roark, C. Ruder, B. Schulz, P. Williams, J. Walton, M. Wilson, B. Abbott, A.M. Callegari, S. Cogdell, J. Lally, D. Johnson, C. Jenkins, E. Mann, J. McAuliffe, E. DeLouis, M. Comeau, K. Downey, M. Dillon, P. Denning, S. Darney, G. Darling, J. Grace, M. Gowin, C. Hurley, A.M. Haugh, T. Lyndon.

ROOM 205: J. Baker, T. Bellman, J. Chartier, N. Drimmel, F. Georgie, R. Morrisey, M. McNamara, J. Speight, J. Sulzen, T. Sublette, T. Toman, R. Wagner, F. Anderson, B. Behrens, P. Billings, M. Brady, N. DeGhelder, P. Lightner, D. Mason, T. Mesmer, M. McQueeny, R. Rast, D. Saitta, J. Stoetzer, E. Swann, M. Upton, H. Werkowithc, R. Wynne, S. Bliss, B. Blue.

ROOM 304: B. Bellman, T. Bissing, J. DeGan, P. Delaney, J. Denning, J. Farris, J. FitzGerald, S. Glynn, C. Goodman, K. Gable, L. Hendrix, S. Herner, C. Herter, A. Herrbach, J. Howard, M. Howard, J. Mumara, P. Kalwei, J. Miraslav, A. Parra, M. Peterson, J. Powell, R. Reno, M. Rossato, P. Rowland, M. Ryan, J. Schreier, B. Sharkey, B. Smith, D. Smith, C. Staab, R. Staab, P. Summers, M. Tarwater, T. Comeau.

ROOM 306: D. Blackshear, J. Brown, G. Cipolla, J. Conran, K. DiBon, B. Dorrian, D. Foley, D. Frame, T. Freeman, J. Gregg, F. Henke, T. Hillbrand, C. Jones, D. Kramer, J. Lalumia, M. LaVan, E. Liebow, R. Lucero, F. McMahon, M. McMahon, M.J. Monahan, L. Nicholson, M. NovoGradac, J. Overman, J. Page, R. Pallanich, B. Prather, J. Romano, D. Rudolph, M. Shea, J. Straley, J. Schnepf, K. Teevan, H. Thorpe, C. Tschirhart, B. Fundis.

ROOM 402: D. Beerbower, F. Beullens, A. Bivona, C. Boyd, R. Crass, M. Cushing, K. Daub, F. Daugherty, J. Dixon, M. Doyle, P. Egan, M. Elizonda, C. Elliott, C. Gibbs, M. Haidusek, D. Hinkebein, C. Horan, C. Kiefer, K. Legate, J. Lucas, R. McCleery, J. Malone, J. Martin, M. Mishmash, D. Nowell, M. O'Connor, W. Perry, R. Pierceall, J. Pipes, K. Ryan, J. Salazar, M. Stitz, J. Tremonti, F. Tucker, J. Wahl, M. Wilson, D. Zeller.

ROOM 404: W. Barry, M. Brady, D. Brake, L. Brice, T. Bresina, A. Buck, V. Clark, B. Coleman, P. Connelly, M.F. Danetta, D. Gangel, T. Hairston, J. Hanlon, R. Hawver, H. Hiesberger, B. Hudson, W. Langley, M. Laughlin, W. Lawrence, J. Long, A. Lynch, A. McGonigle, C. McMichael, S. Miller, S. Moling, F. Morales, M. Nichols, J. Nolan, G. O'Malley, F. Roberts, R. Rogers, J. Sullivan, E. E. Vogel, G. Wright, J. Mindrup.

ROOM 403: P. Arensberg, L. Clark, E. Cockell, T. Daugherty, P. Gallagher, M. Guillaume, L. Heegan, P. Hellinger, R. Joplin, T. Kammerer, S. King, K. Kramer, G. LaSala, P. Melia, J. Meyer, P. Murphy, W. Nixon, M. O'Neil, T. Schmidt, L. Schuh, A.M. Seitzer, M. Sherwood, S. Smith, B. Sprenger, I. Stoerman, M. Thorpe, J. Whitaker, C. Werr, H. Vogel, M. Gross.

ROOM 401: R. Allin, K. Andrews, G. Armilio, V. Arth, R. Brown, M. Cates, P. Curry, J. Farrar, S. Frazee, L. French, D. Gable, D. Gaschen, J. Gregory, M. Herner, A. Johnson, E. Kelly, B. Kreamsreiter, M. Lahman, L. Lalumia, M. Lohe, C. Madel, P. McGuire, J. O'Sullivan, J. Reyes, M. Shine, R. Steele, D. Taylor, P. Whorton, B. Williams, R. Williams, J. Wilson, S. Willis.

ROOM 405: T. Bradley, F. Kneaves, D. Haefling, J. Dionisio, G. Tobler, S. Keeney, G. Hiller, B. Behlau, L. Downey, R. Stuckey, C. Stevenson, M. Dunn, J. Sevart, G. Breitenstein, J. Graves, R. Curran, P. O'Neil, C. Bachman, M. Lonegan, B. Geschwind, K. Shea, A. Watkins, C. Bernardi, A. Smith, J. Callahan, C. Humphrey, M. King, J. Beebe, L. Abbott, L. Swann, S. Fundis, D. Easter.

ROOM 302: M. Niemeyer, S. Brady, B. Kalmus, M. Capello, E. Pulido, B. Tallman, D. Hicks, J. Curran, P. Lamb, V. Heegan, B. Buellens, B. Badgett, J. Howard, J. Waller, A.M. Connelly, C. Buckels, G. Trueblood, J. Bresina, B. DiBon, L. Bonner, J. Miller, J. McLaury, V. Easter, P. Healy, B. Dixon, J. Sansome, P. Marsee, E. Lucero, E. Paura, M. Miles, L. McBrayer, C. Johnson, M. Ibarra.

ROOM 303: J. Akin, E. Beebe, L. Aschwanden, C. Bellman, J. Bogert, J. Copenhaver, M. Coughlin, G. Daly, H. Demmel, V. Denning, M. Falk, I. Ferguson, S. Geschwind, M. Gray, D. Haefling, S. Hicks, M. Howerton, R. Kammerer, W. McMahon, C. Meyers, M. Moore, K. Musslyn, F. Nenninger, M. O'Malley, J. Pfeiffer, N. Stafford, T. Tschirhart, N. Ward, R. Wenninghoff, N. Young.

H  
O  
M  
E  
R  
O  
O  
M  
  
P  
A  
T  
I  
E  
N  
T  
R  
O  
O  
M  
S



## BUSINESS PATRONS

### PICKETTS FLOWER & GIFT SHOP

3906 Troost  
WEstport 4986

### STYLE BOOK CLEANERS

3949 Troost  
VAentine 9163

### SULZEN PAPER RULING

727 Central  
VICTor 6326

### VOGUE FABRIC SHOP

933 Walnut  
GRand 2220

### I. DONNELLY COMPANY

1121 McGee  
VICTor 0942

### LoMONACO SHOE SERVICE

6247 Brookside Plaza  
Hiland 3939

### BUSINESS MEN'S ASSURANCE

215 West Pershing  
BALtimore 6300

### KANSAS CITY COMPOSITION

417 East Eighth Street  
VICTor 0937

### FRIENDS OF LILLIS

MR. & MRS. F. RAYNOR

MR. JERRY E. SULLIVAN

MR. PAUL E. SULLIVAN

### CONSTABLE HODGINS PRINTING CO.

1416 McGee  
GR. 2157

Mr. La Kemper



Our thanks to this fine patron for keeping Lillis shining bright so the staff could get through the halls after the 3:08 dash.

## PERSONAL PATRONS

MR. & MRS. WM. CRUSOE

MR. & MRS. F. BIRITZ

DR. & MRS. A. HEARST

MRS. J. N. CRESWELL

MR. & MRS. S. L. ALLEGRI

MRS. RAY B. ETH

MR. & MRS. WM. DOBSON

MR. & MRS. JAY B. NOWELL

MR. & MRS. H. J. BURASCO

MRS. LENA M. JOPLIN

MR. & MRS. P. F. BRINK

MR. & MRS. H. J. CRASS

MR. & MRS. L. E. LOSCHKE

MR. & MRS. C. E. MORRISEY

MR. & MRS. JOS. P. THORPE

MR. & MRS. O. B. GREGG

MR. & MRS. PAUL PUTTHOFF

MR. & MRS. J. E. THOMPSON

MR. & MRS. N. J. METZGER

MR. & MRS. WM. H. SHONBORN

MR. & MRS. JOS. L. KELLY

MR. & MRS. F. F. MURPHY

MR. & MRS. J. J. MICELI

MR. & MRS. O. A. MEIER

MR. & MRS. F. J. NEWHOUSE

REV. J. W. CONWAY O.P.

REV. F. A. WEIR

REV. M. F. McAULIFFE

REV. REGIS HICKEY O.S.B.

REV. J. BASKETT





# SENIOR DIRECTORY



NAME	ADDRESS	PHONE			
Jack Allen	3649 Madison	Lo. 3557	James Kalmus	4224 Tracy	Lo. 3041
Sally Allegri	4232 Bellefontaine	Li. 8855	Joseph Kelly	223 West 40th St.	We. 5805
Mary Alexander	2932 East 29th St.	Li. 7415	Michael Kennedy	6100 Park	Em. 2956
Edwin Arth	616 West 39th St.	We. 8816	James Kramer	104 South Pyle	Dr. 7744
Sue Adams	4320 Paseo	Lo. 0987	Patricia Kneaves	3201 East 32th St.	Ar. 0736
Toni Bonello	4239 South Benton	Wa. 2012	Mary Kay Loschke	4036 Holmes	We. 3709
Larry Bowman	5124 Lydia	De. 0115	Mary Lyndon	4315 Madison	Va. 6550
Mary Jo Bowman	4304 Benton Blvd.	Li. 7816	Frank Lucido	4141 McGee	Va. 0241
Michael Burasco	3744 Bellefontaine	Wa. 8671	Marjorie Mansour	4033 Forest	We. 8563
Jerome Biritz	4136 Charlotte	Lo. 7736	Mary Ann Meier	3543 College	Wa. 1041
Richard Bell	4300 Bellefontaine	Wa. 7094	Paula Messina	3847 College	Wa. 1019
Mary Kay Brinkoetter	3903 Benton Blvd.	Li. 5713	Eugene Miceli	4537 Gillham Road	We. 1940
Jody Balestrere	508 Harrison	Gr. 8431	Barbara Mingucci	3804 Bales	Li. 6027
Warren Becker	6021 Kenwood	De. 6217	Dan Morgan	4419 East 38th St.	Li. 7126
James Brink	3803 Campbell	We. 8864	Philip Morrisey	3908 Wyoming	We. 0958
James Brown	3743 Virginia	We. 2490	Barbara Murphy	3839 Indiana	Ar. 6883
Delores Brownfield	4009 Indiana	Li. 8524	Frances Myers	2242 Brighton	Be. 6787
Mary Elizabeth Brown	4420 Cleveland	Wa. 4896	Hugh McNamara	614 West 39th St.	We. 8385
Shirley Burke	3309 South Benton	Ar. 4781	Rose Ann McGuire	3807 Olive	Wa. 1849
Rose Cabrini	3927 Mersington	Ar. 1201	Mary Kathryn Nicholson	1511 Garfield	
Darlene Cipolla	5003 Paseo	Ar. 8946	Donald Newhouse	3533 Flora	Li. 9519
Mary Louise Chandlee	4149 Genessee	We. 7012	David O'Malley	3917 Bell	We. 1960
Kenneth Clark	4423 Wabash	Li. 7888	JoAnn O'Brien	7239 Main	De. 5337
Eileen Clossick	2801 East 39th St.	Ar. 2193	John O'Neil	3626 Flora	Wa. 1980
Joyce Conran	4404 Monroe	Wa. 1996	Barbara O'Donnell	3640 Troost	We. 0332
Joseph Cook	4302 Flora	Li. 1179	James Payne	2625 Campbell	Ba. 9618
Barbara Cox	3702 Montgall	Ar. 2178	Beverly Putthoff	2239 Denver	Be. 0389
John Crass	3034 Marsh	Ar. 3095	Anita Parr	4407 Genessee	Lo. 1384
Joan Crusoe	4107 Virginia	Je. 1599	Warren Page	5216 Woodland	Wa. 7252
Mary Cummings	919 West 26th St.	Lo. 6314	Yvonne Prather	2216 East 39th St. N. Terr.	Ge. 2326
Rosemary Curley	3325 Wayne	Wa. 7213	Mary Ann Peterson	3715 Chestnut	Li. 9030
Mary Lou Creswell	2727 Quincy	Wa. 4849	Joanne Parrott	4220 Charlotte	Va. 0876
James Davis	2931 Quincy	Wa. 0981	Robert Plassmeyer	7939 Holmes	De. 6220
Mary Elizabeth Dobson	4208 Locust	We. 1277	Rosemary Ratchford	4617 Forest	Va. 5123
John Dorrian	635 39th St. Terr.	Va. 0267	Mary Margaret Ryan	4210 Flora	Li. 2631
Denise Duffy	6806 North Montgall	Vi. 9535	Jacqueline Ronallo	1328 East 41st	Je. 0849
Donald Eber	3801 Indiana	Li. 5102	John Roecker	4163 Roanoke Road	Lo. 5866
Ronald Eber	3801 Indiana	Li. 5102	Jerry Recob	3635 Park	Ar. 3692
Marilyn Eth	5827 East 11th St.	Ch. 2197	Richard Renner	5510 Holmes	Ja. 0145
Kathryn Ferrel	3327 Wayne	Li. 8283	Mary Frances Schaffer	3927 Bell St.	Lo. 2298
Shirley Gallagher	1526 East 51st St.	Lu. 1767	Shirley Spindell	3928 Forest	We. 4590
Michael Gibbs	106 West Armour	Ja. 5298	Jerome Stoetzer	1118 West 48th St.	We. 0036
Judy Gill	3805 Bales	Li. 2898	Mary Ann Staab	3909 Elmwood	Ar. 5376
Claire Gillispie	3227 Benton Blvd.	Ar. 3079	Paula Stahl	1410 Jefferson	Vi. 6349
Mary Carol Grace	22 West 34th St.	Je. 4374	Laura Stoerman	3401 East 75th St.	De. 6071
Judy Gladioux	5833 Forest	Hi. 2900	Sylvia Shoemaker	4330 Charlotte	Lo. 4630
Joseph Glynn	4040 Michigan	Li. 9883	Martha Syverson	2608 East 49th St.	Li. 2002
Joseph Gregg	4409 Bell St.	Lo. 4106	Mary Lou Smith	4527 Genessee	We. 5865
Rosemary Gyulay	4220 Agnes	Wa. 8875	Bill Sanders	912 Locust	Vi. 4780
James Harris	3216 Olive	Ar. 9948	Kathrine Skinner	900 East 28th St.	Gr. 6109
JoAnn Hessee	3608 Bales	Li. 1654	Anna Marie Shonborn	2041 East 47th St. Terr.	Wa. 1740
Donald Hoberecht	2815 East 39th St.	Ar. 1690	Joseph Tschirhart	2546 Charlotte	Vi. 4619
James Horner	4512 Bellevue	Lo. 0297	Suzanne Teevan	3524 College	Wa. 8013
Bette Howard	3630 Cleveland	Wa. 1268	Louise Thompson	4945 East 41st	Li. 5177
JoAnn Jakobe	5300 Harrison	Ja. 5023	Kenneth Thorpe	3800 Virginia	Lo. 7768
Virginia Jenkins	2301 East 48th St.	Li. 1484	Howard Welhoelter	7118 Paseo	De. 9467
Kenneth Johnson	2827 East 7th St.	Hu. 4863	Fred Williams	4203 Virginia	We. 4586
Cora Sue Johnson	3530 Brooklyn	Ar. 1242	Kathleen Wonderly	3033 Bales	Li. 8459
Robert Johnson	201 1/2 Scoot Ave.	Ja. 7348	Elizabeth Willis	6430 East 12th Terr.	Hi. 1502
Judy Joyce	5334 Troost	Ja. 7656	Betty Ann Wilson	7324 Walrond	Em. 0590
Evelyn Jones	583 Harrison	Gr. 7187	Alfretta Wilson	2517 Brooklyn	Li. 9413
Joseph Jones	4149 Harrison	Lo. 1612	Natalie Zibug	3936 Highland	



